

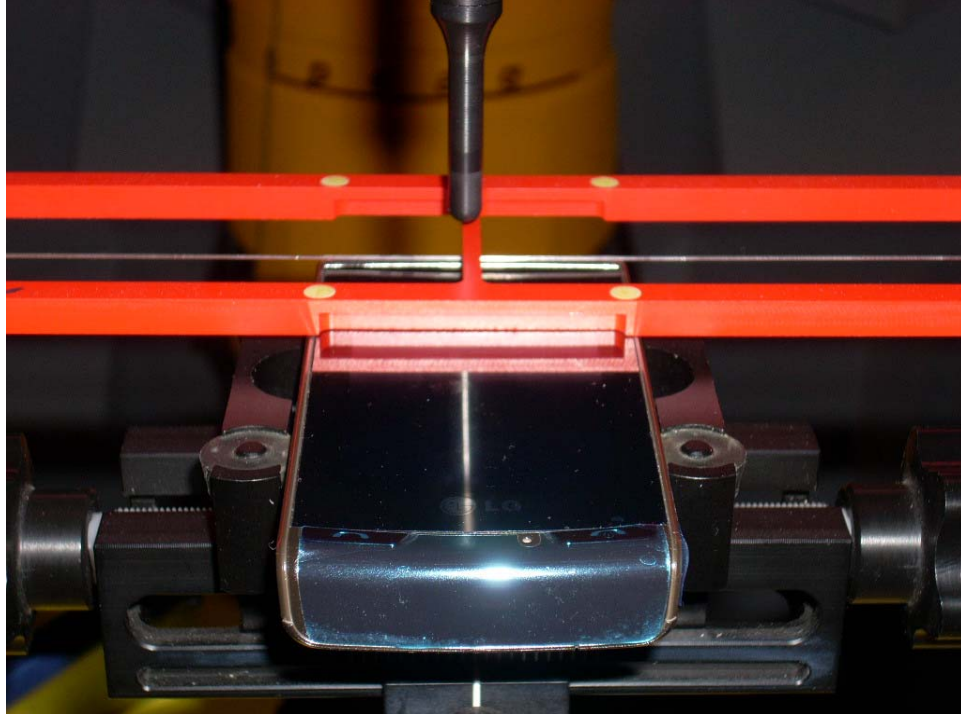


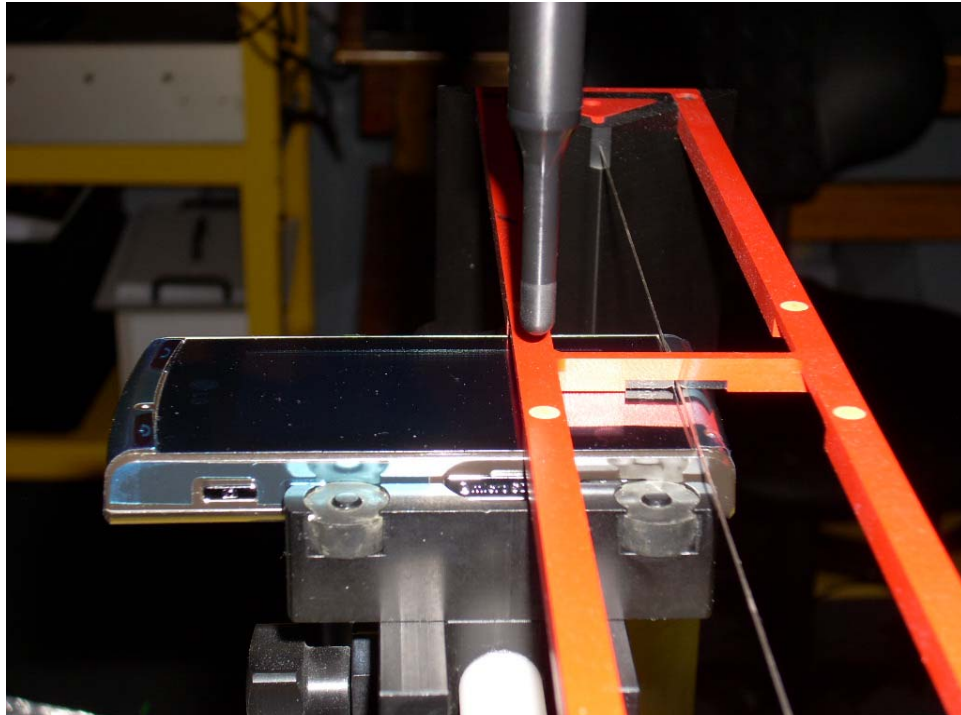
## 17. TEST PHOTOGRAPHS

See following Attached Pages for setup photographs.



<b>FCC ID:</b> BEJCT810	 <b>PCTEST</b> ENGINEERING LABORATORY, INC.	<b>HAC (RF EMISSIONS) TEST REPORT</b>	 <b>LG</b>	<b>Reviewed by:</b> Quality Manager
<b>HAC Filename:</b> 0905261088.BEJ	<b>Test Dates:</b> May 28 - June 3, 2009	<b>EUT Type:</b> 850/1900 GSM/GPRS/EDGE/WCDMA Phone with Bluetooth and WLAN	Page 75 of 77	



**Figure 17-1**  
**Ear Reference Point HAC Phantom Alignment**



**Figure 17-2**  
**HAC Phantom Plane Alignment**

<b>FCC ID:</b> BEJCT810		<b>HAC (RF EMISSIONS) TEST REPORT</b>		<b>Reviewed by:</b> Quality Manager
<b>HAC Filename:</b> 0905261088.BEJ	<b>Test Dates:</b> May 28 - June 3, 2009	<b>EUT Type:</b> 850/1900 GSM/GPRS/EDGE/WCDMA Phone with Bluetooth and WLAN	Page 76 of 77	

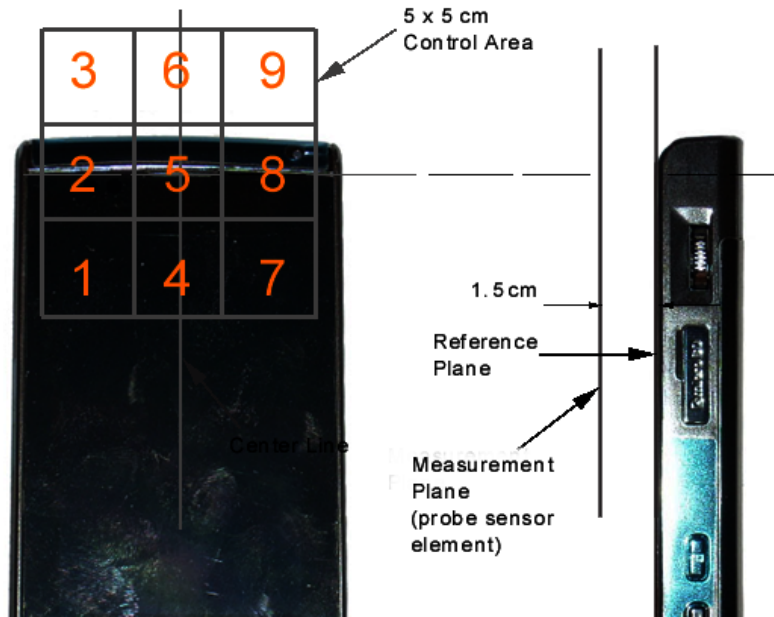


Figure 17-3 5x5 Scan grid above WD

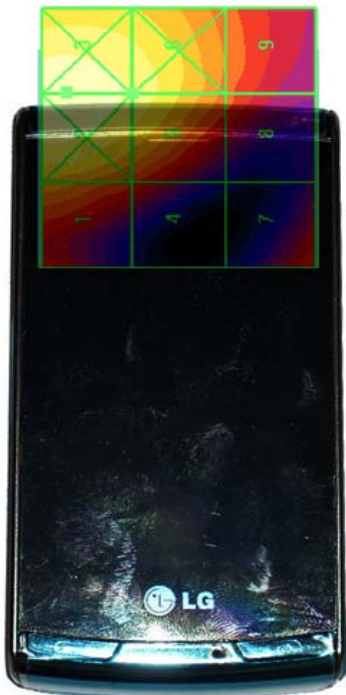


Figure 17-4 E-Field WD Scan overlay



Figure 17-5 H-Field WD Scan overlay

FCC ID: BEJCT810	PCTEST ENGINEERING LABORATORY, INC.	HAC (RF EMISSIONS) TEST REPORT	LG	Reviewed by: Quality Manager
HAC Filename: 0905261088.BEJ	Test Dates: May 28 - June 3, 2009	EUT Type: 850/1900 GSM/GPRS/EDGE/WCDMA Phone with Bluetooth and WLAN		Page 77 of 77