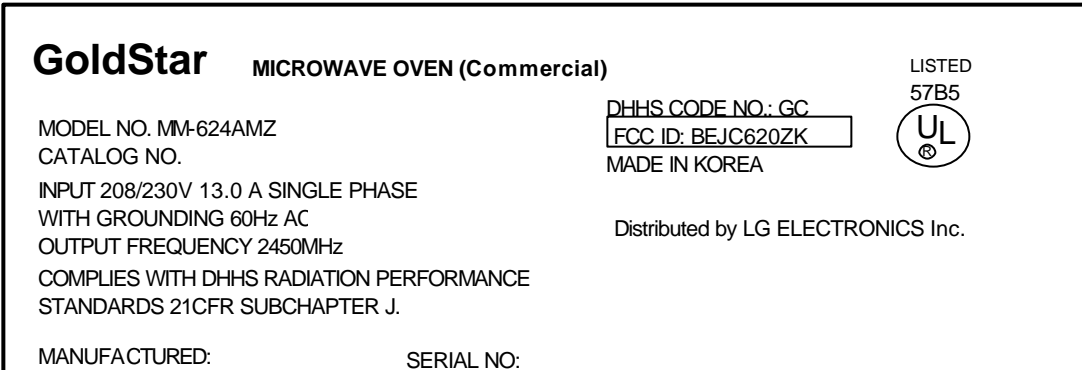


## APPENDIX B. Labeling Requirements

### Labeling requirements per Section 2.925 and 15.19.

The label shown shall be permanently affixed at a conspicuous location on the device and be readily visible to the user at the time purchase.



<Fig. 1. Sample Label of Nameplate>

\* Alternate location:  
The nameplate may be  
alternatively affixed on  
the rear surface of oven  
cavity, left side of control  
panel or internal  
surface of oven cavity



< Fig. 2. Photo of the physical location of the label>