

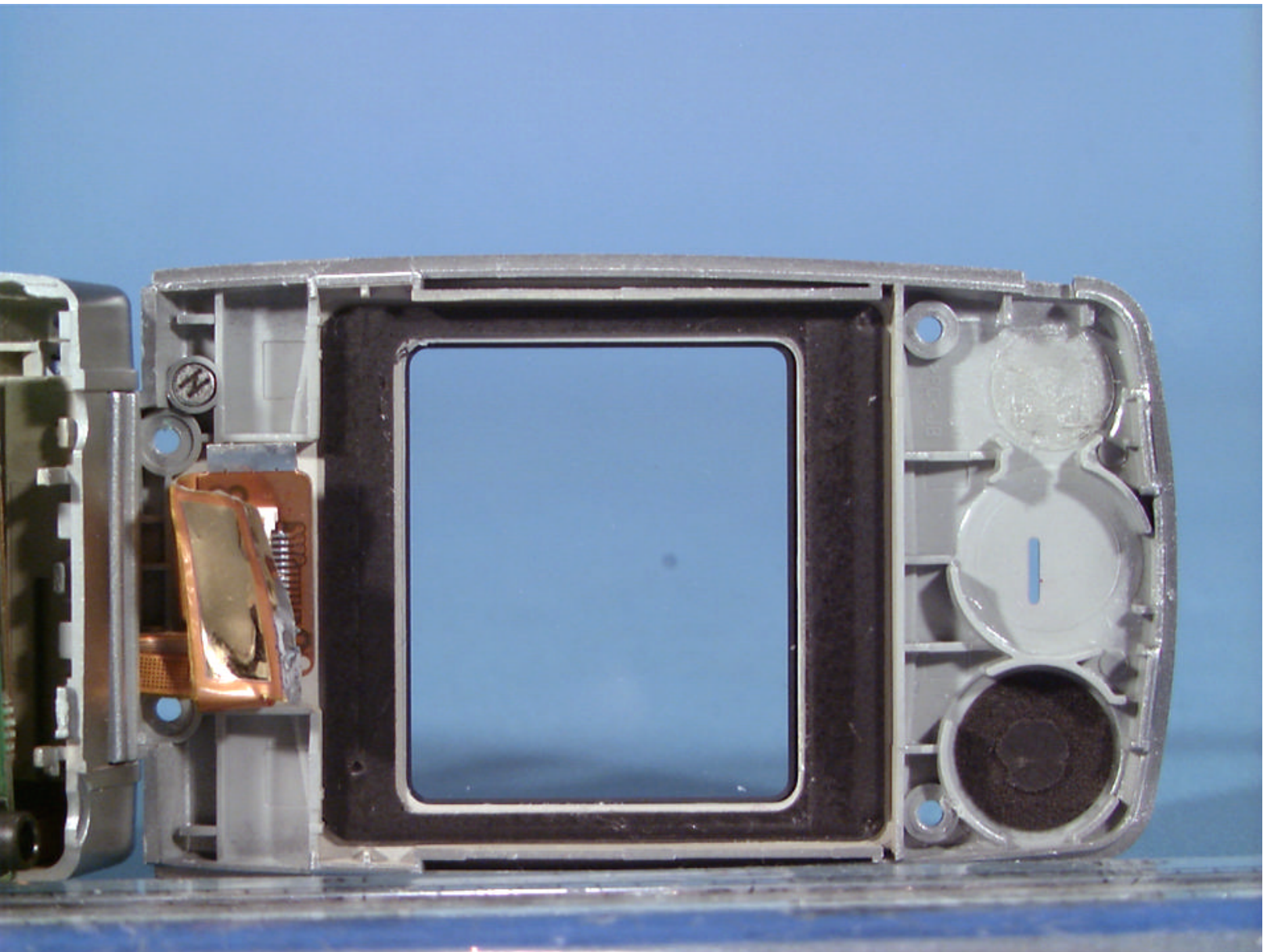
© 2003 PCTEST Lab.

LGE FCC ID: BELAX3100

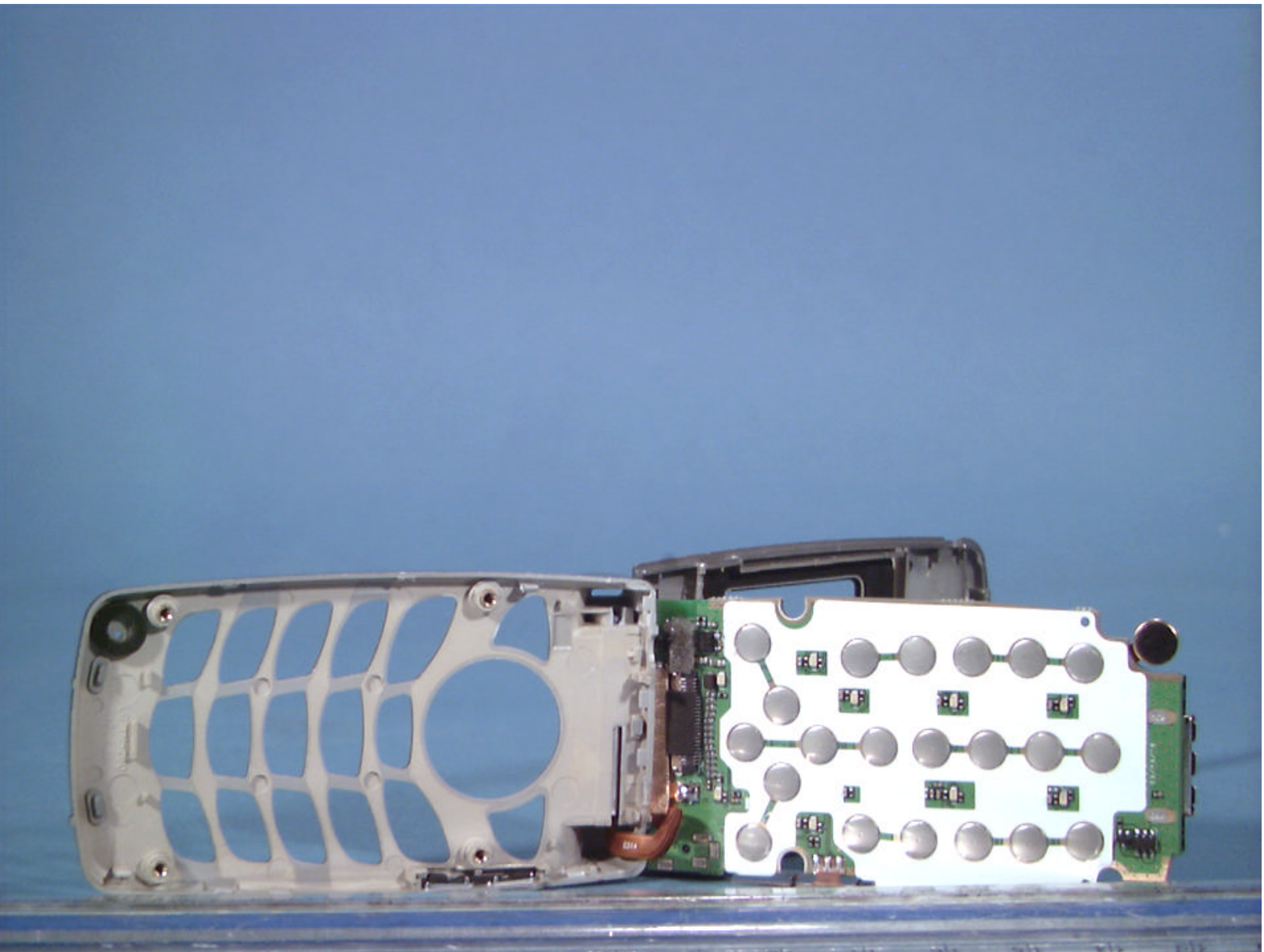
Tri-Mode Dual-Band Analog/PCS Phone

EUT Photographs

Model: AX3100



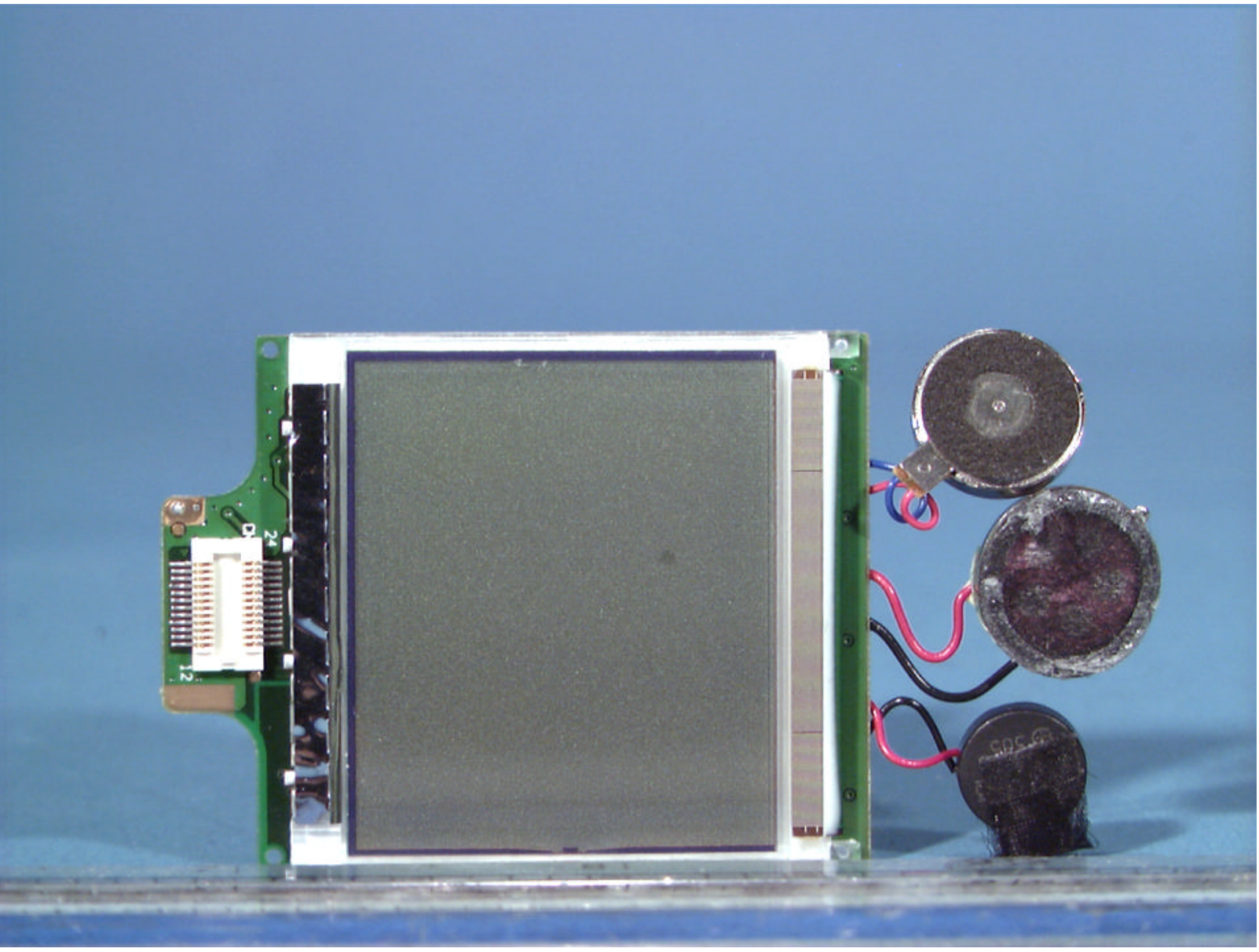
	LGE FCC ID: BELAX3100	EUT Photographs
© 2003 PCTEST Lab.	Tri-Mode Dual-Band Analog/PCS Phone	Model: AX3100



	LGE FCC ID: BELAX3100	EUT Photographs
© 2003 PCTEST Lab.	Tri-Mode Dual-Band Analog/PCS Phone	Model: AX3100



	LGE FCC ID: BELAX3100	EUT Photographs
© 2003 PCTEST Lab.	Tri-Mode Dual-Band Analog/PCS Phone	Model: AX3100



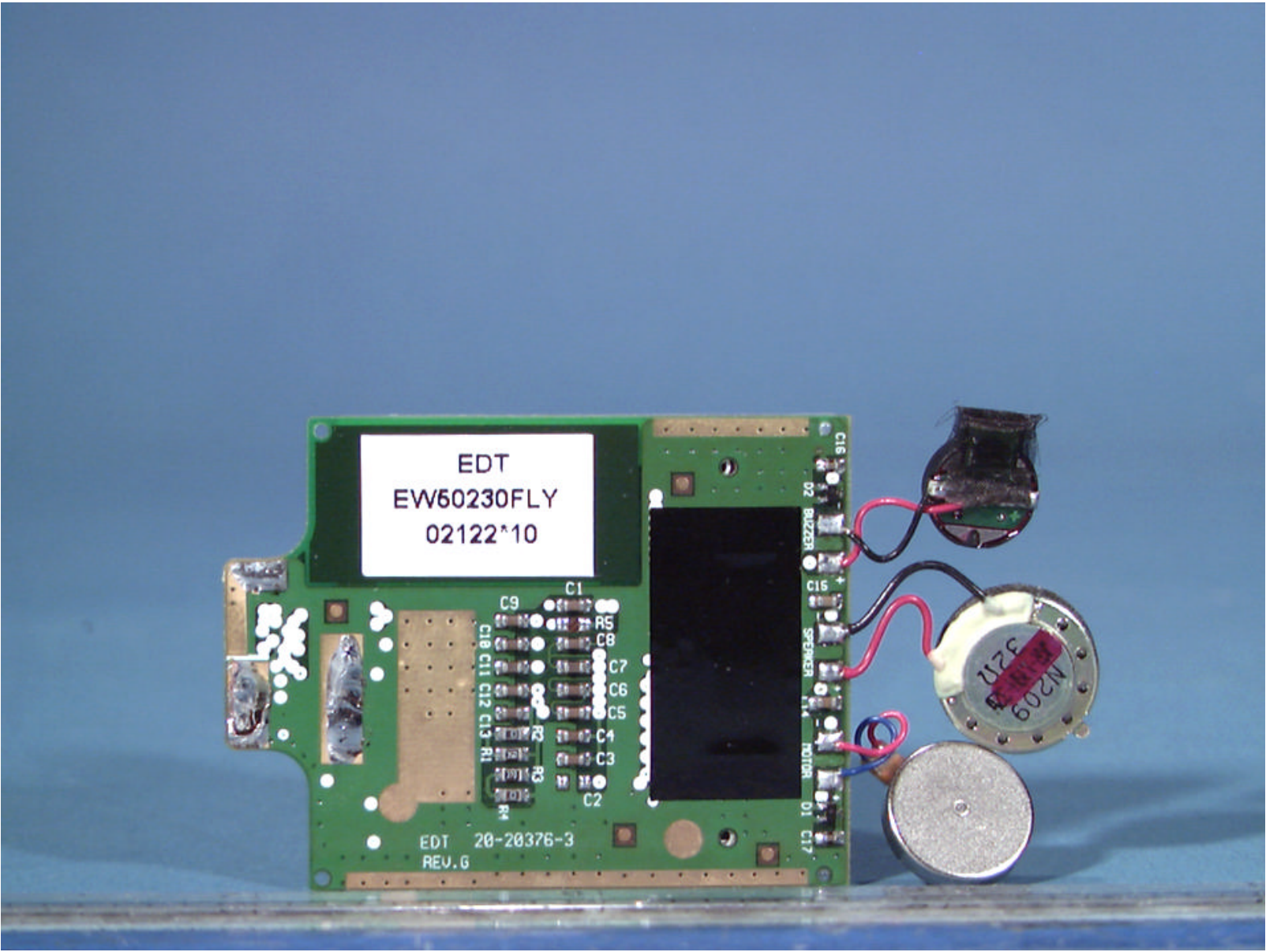
© 2003 PCTEST Lab.


LGE FCC ID: BELAX3100

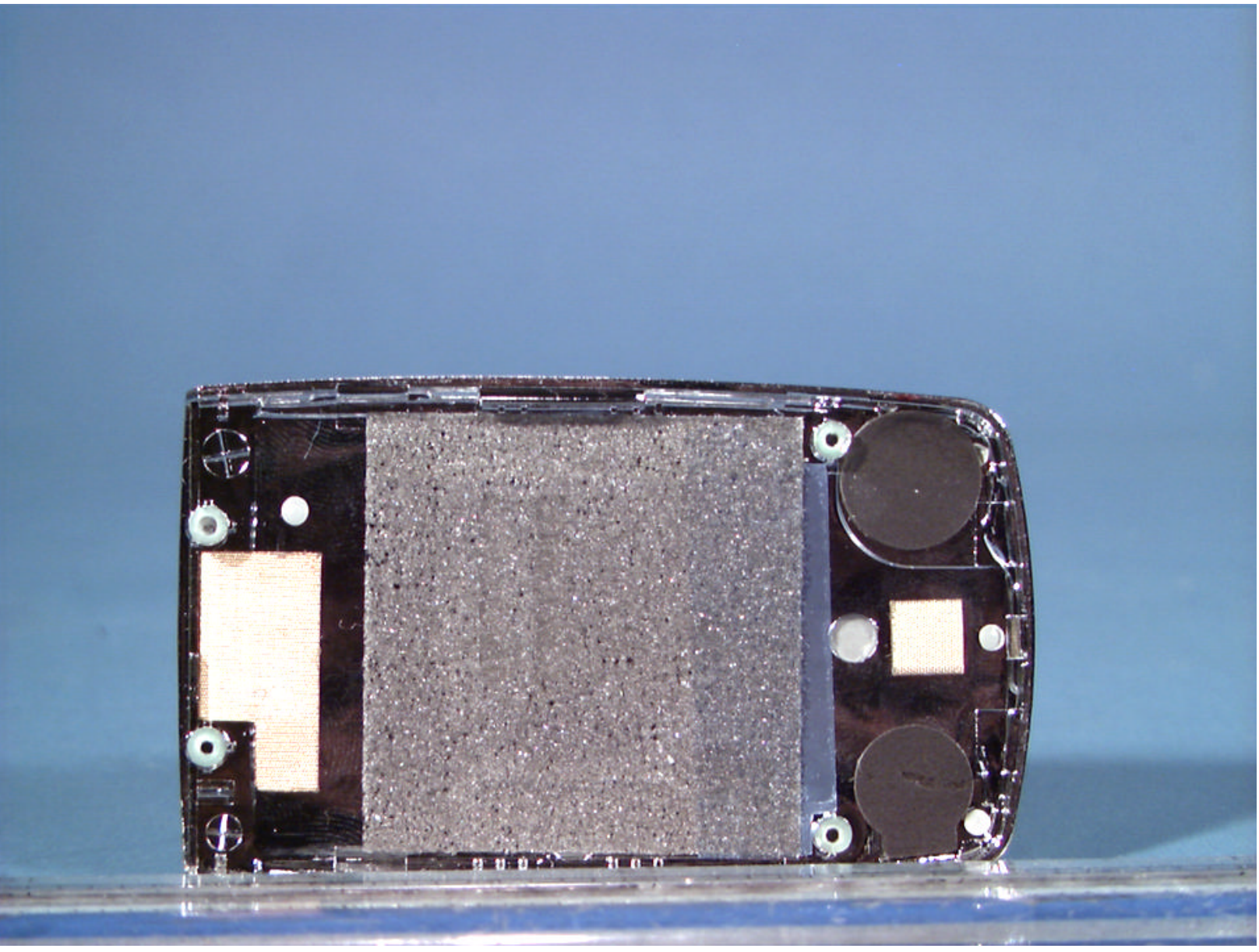
Tri-Mode Dual-Band Analog/PCS Phone

EUT Photographs

Model: AX3100



	LGE FCC ID: BELAX3100	EUT Photographs
© 2003 PCTEST Lab.	Tri-Mode Dual-Band Analog/PCS Phone	Model: AX3100



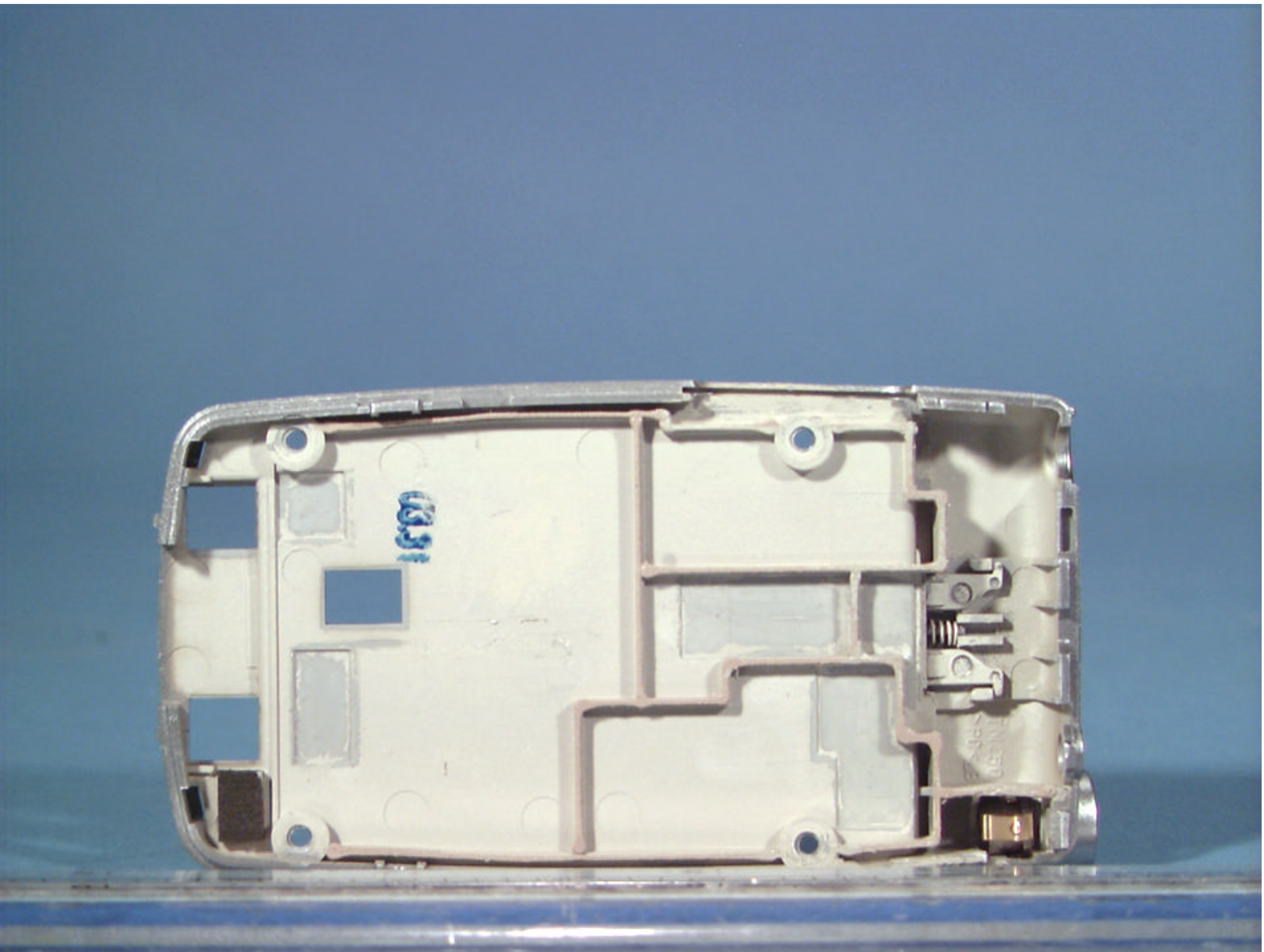
© 2003 PCTEST Lab.

LGE FCC ID: BELAX3100

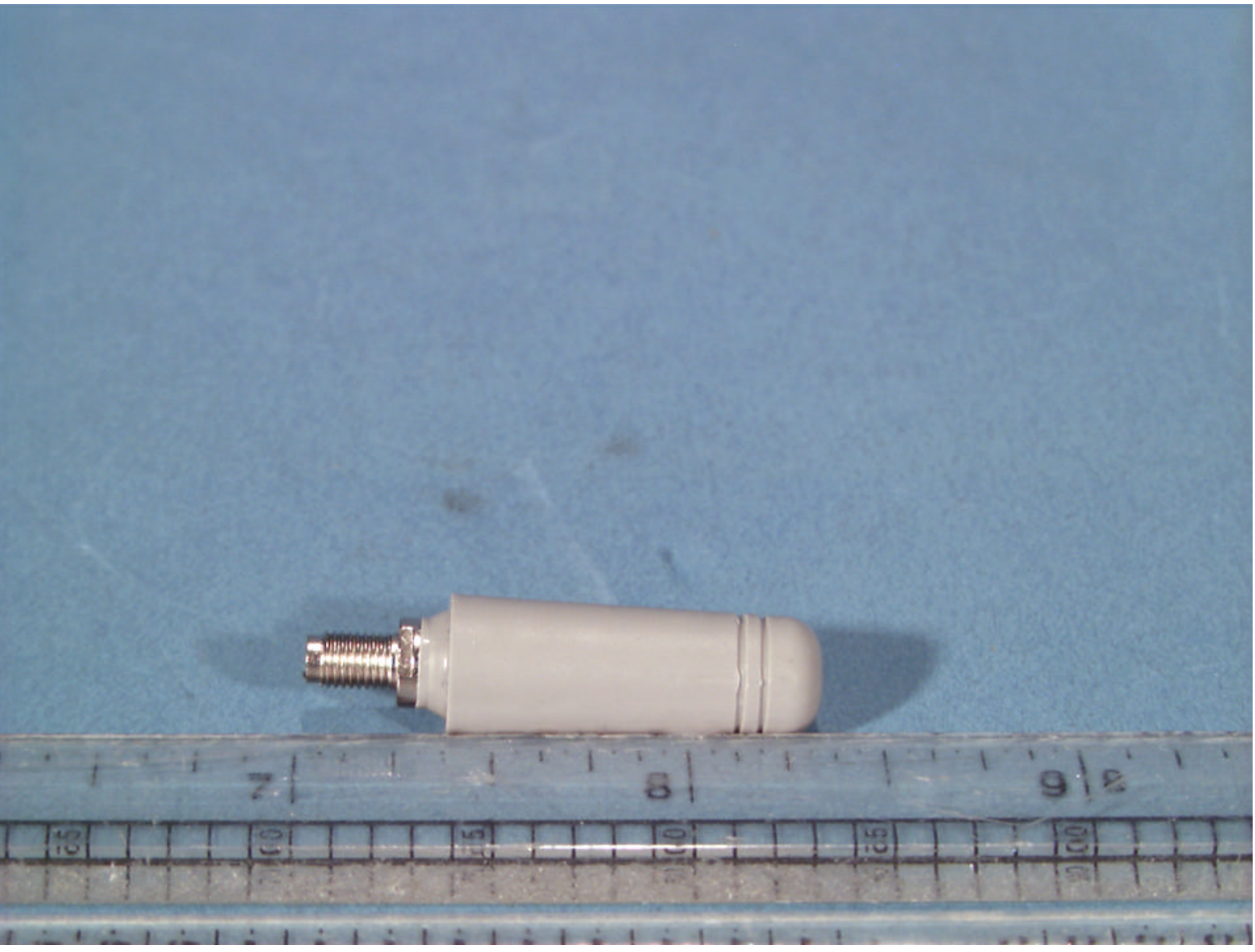
Tri-Mode Dual-Band Analog/PCS Phone

EUT Photographs

Model: AX3100



	LGE FCC ID: BELAX3100	EUT Photographs
© 2003 PCTEST Lab.	Tri-Mode Dual-Band Analog/PCS Phone	Model: AX3100



	LGE FCC ID: BELAX3100	EUT Photographs
© 2003 PCTEST Lab.	Tri-Mode Dual-Band Analog/PCS Phone	Model: AX3100