

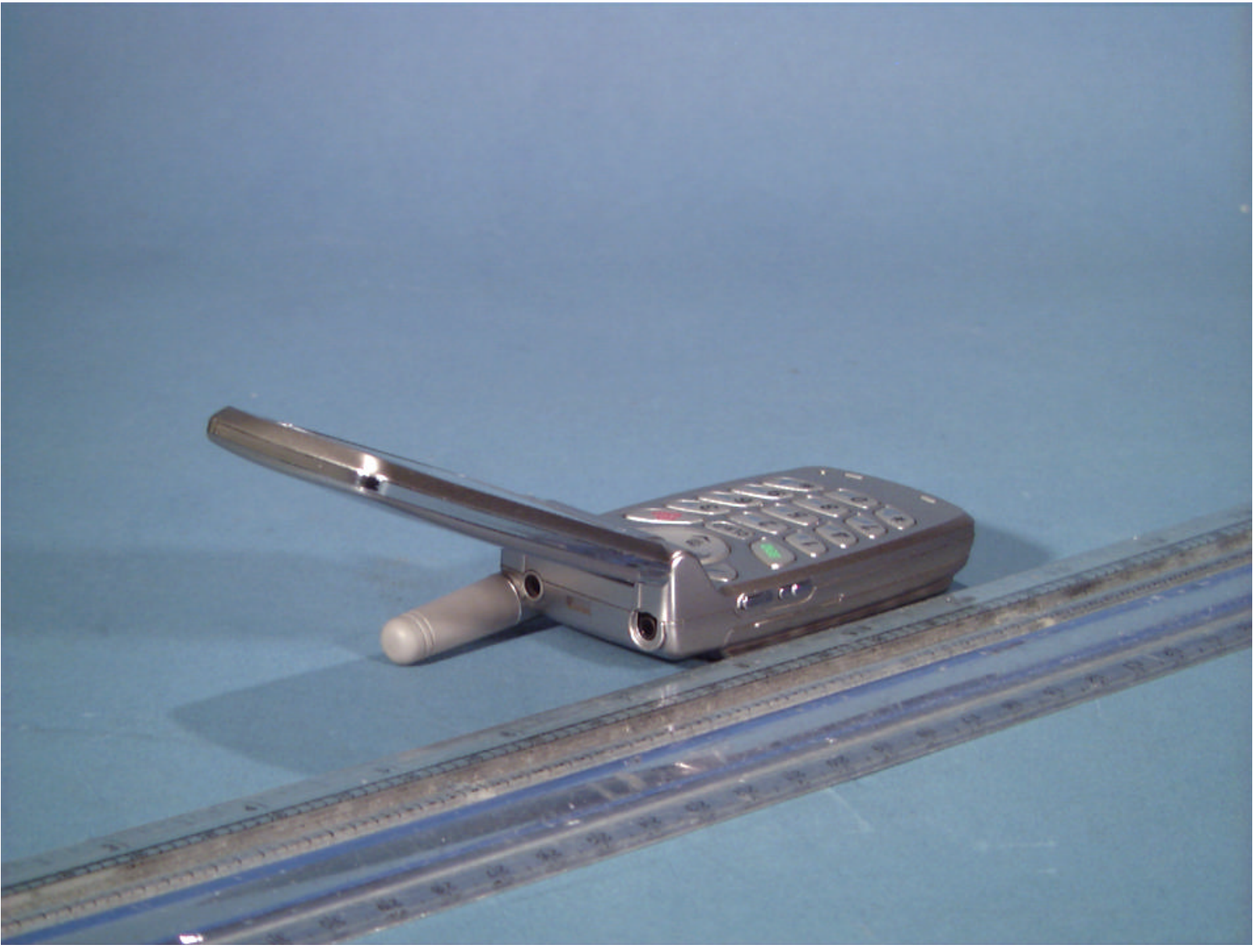
	LGE FCC ID: BEJAX3100	EUT Photographs
© 2003 PCTEST Lab.	Tri-Mode Dual-Band Analog/PCS Phone	Model: AX3100



	LGE FCC ID: BEJAX3100	EUT Photographs
© 2003 PCTEST Lab.	Tri-Mode Dual-Band Analog/PCS Phone	Model: AX3100




	LGE FCC ID: BELAX3100	EUT Photographs
© 2003 PCTEST Lab.	Tri-Mode Dual-Band Analog/PCCS Phone	Model: AX3100




	LGE FCC ID: BELAX3100	EUT Photographs
© 2003 PCTEST Lab.	Tri-Mode Dual-Band Analog/PCS Phone	Model: AX3100



	LGE FCC ID: BEJAX3100	EUT Photographs
© 2003 PCTEST Lab.	Tri-Mode Dual-Band Analog/PCS Phone	Model: AX3100



	LGE FCC ID: BEJAX3100	EUT Photographs
© 2003 PCTEST Lab.	Tri-Mode Dual-Band Analog/PCS Phone	Model: AX3100