

Model : LGX12

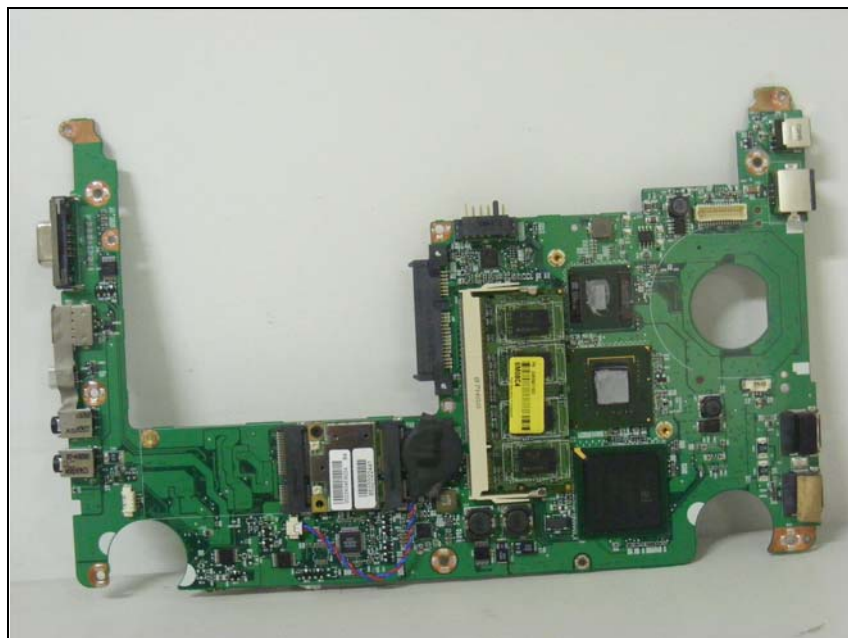
# ***Internal photos of EUT***

Model : LGX12

*Internal view of EUT*



*Top view of Main PCB*



Model : LGX12

*Bottom view of Main PCB*

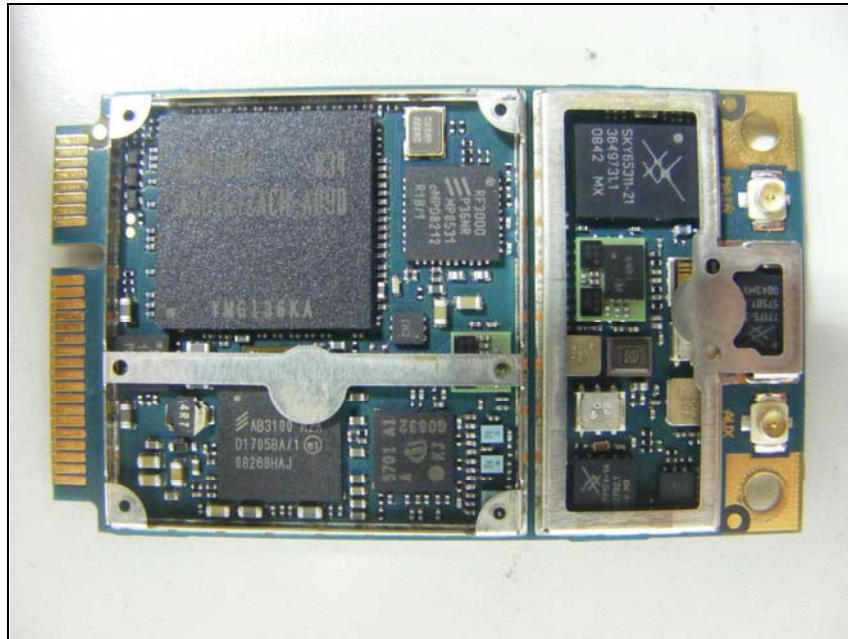


*Top view of WCDMA*

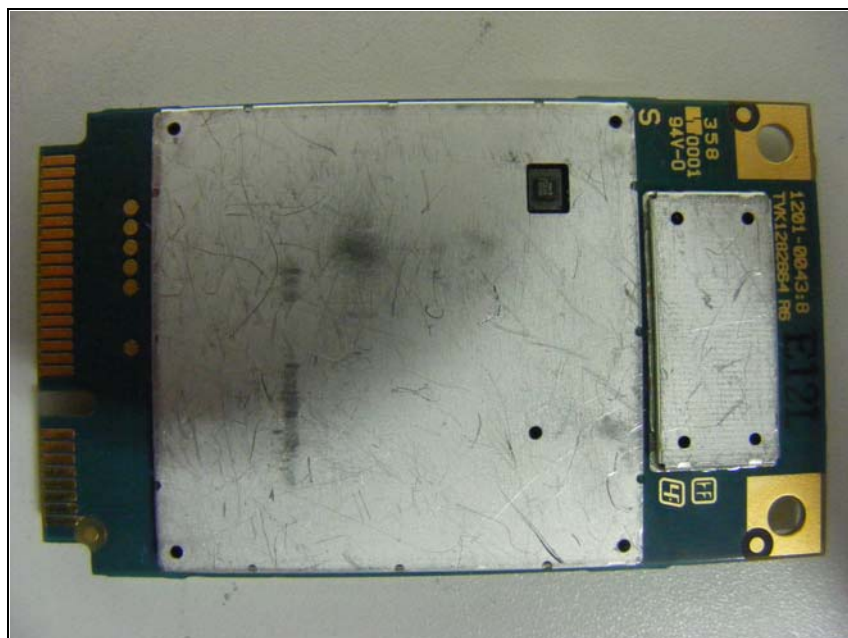


Model : LGX12

*Top view of WCDMA(Removal of shield cap)*

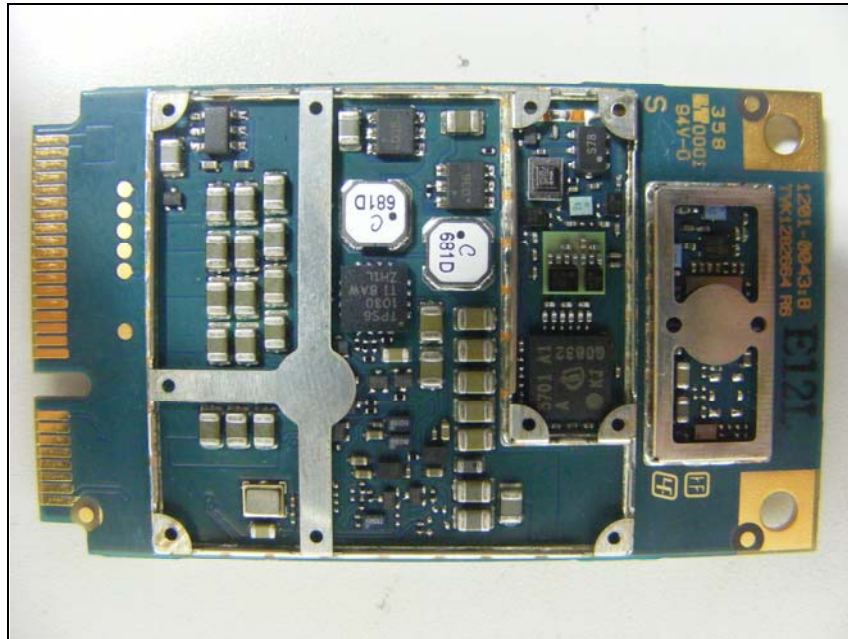


*Bottom view of WCDMA*



Model : LGX12

*Bottom view of WCDMA(Removal of shield cap)*

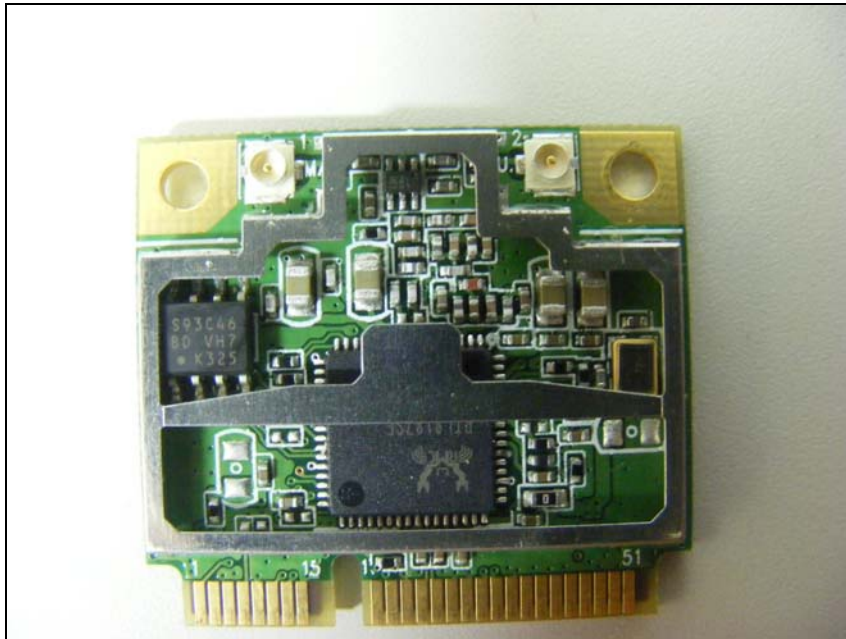


*Top view of WLAN*



Model : LGX12

*Top view of WLAN(Removal of shield cap)*



*Bottom view of WLAN*

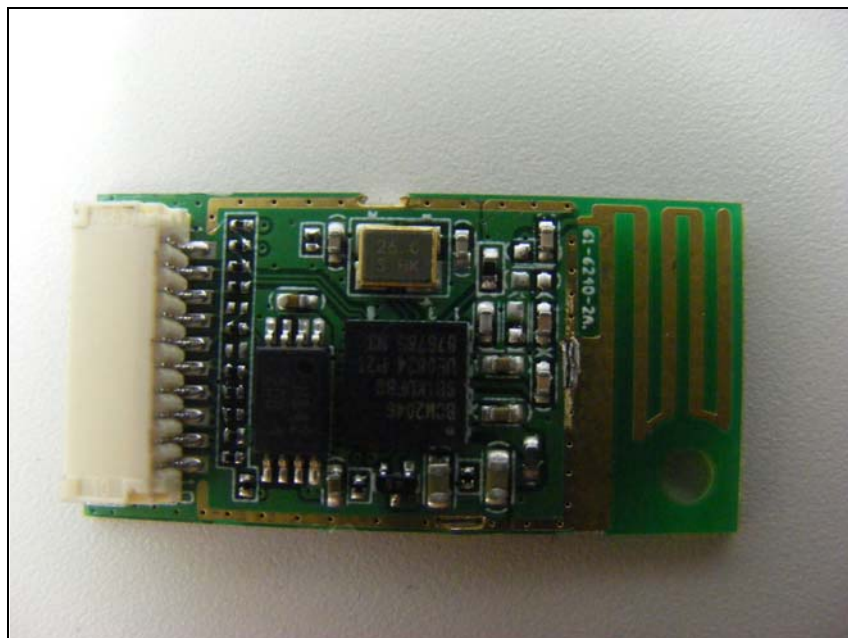


Model : LGX12

*Top view of BT*



*Top view of BT(Removal of shield cap)*

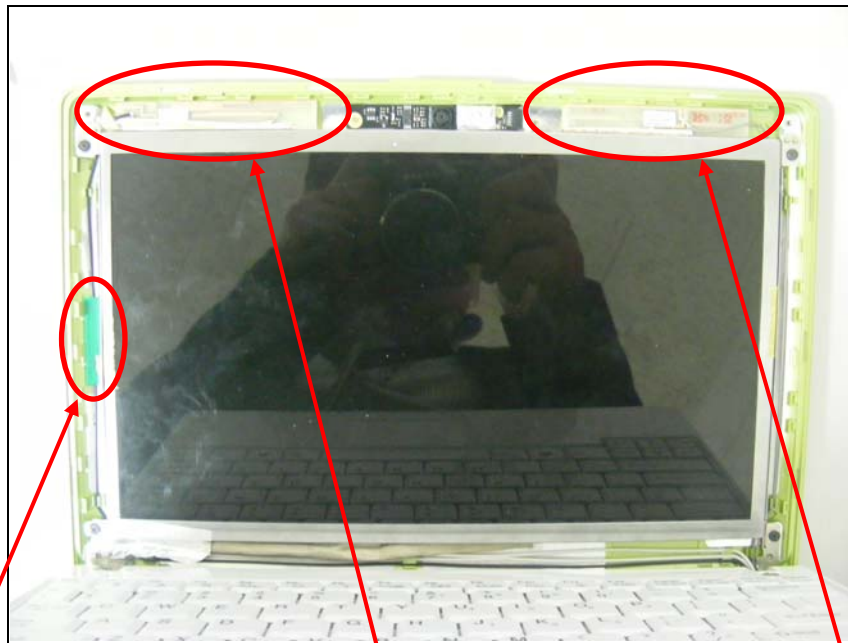


Model : LGX12

***Bottom view of BT***



***View of Antenna***



**MAIN (WLAN)**

**AUX (WCDMA & WLAN)**

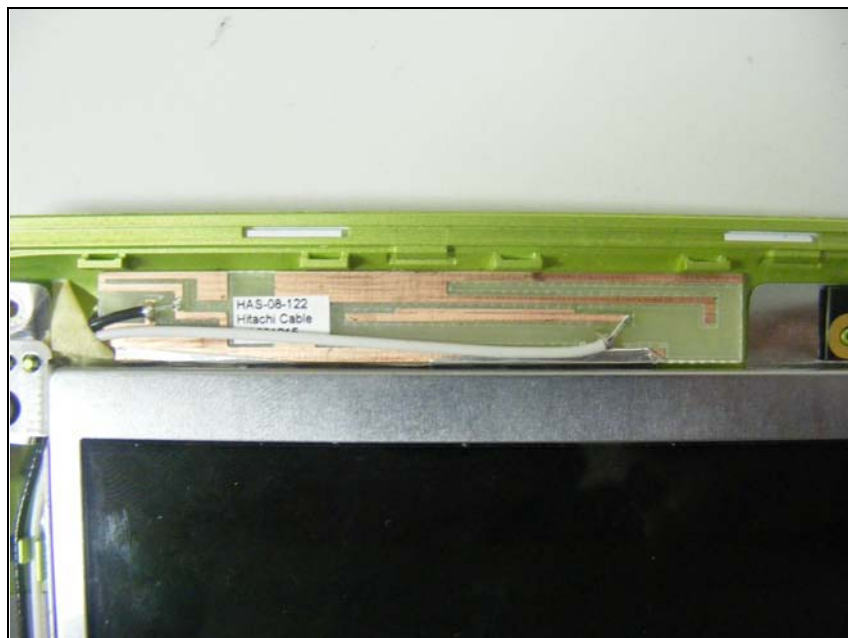
**MAIN (WCDMA)**

Model : LGX12

*View of Main ant (WCDMA)*



*View of AUX ant (WCDMA & WLAN)*



Model : LGX12

*View of Main ant (WLAN)*

