

INTERNAL PHOTO

1. MAIN

1.1 Front

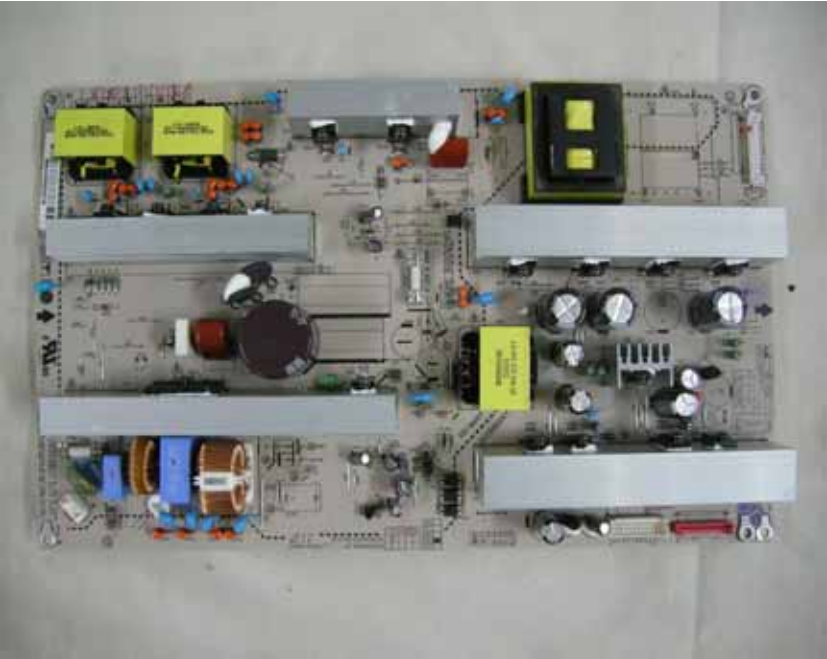


1.2 Rear

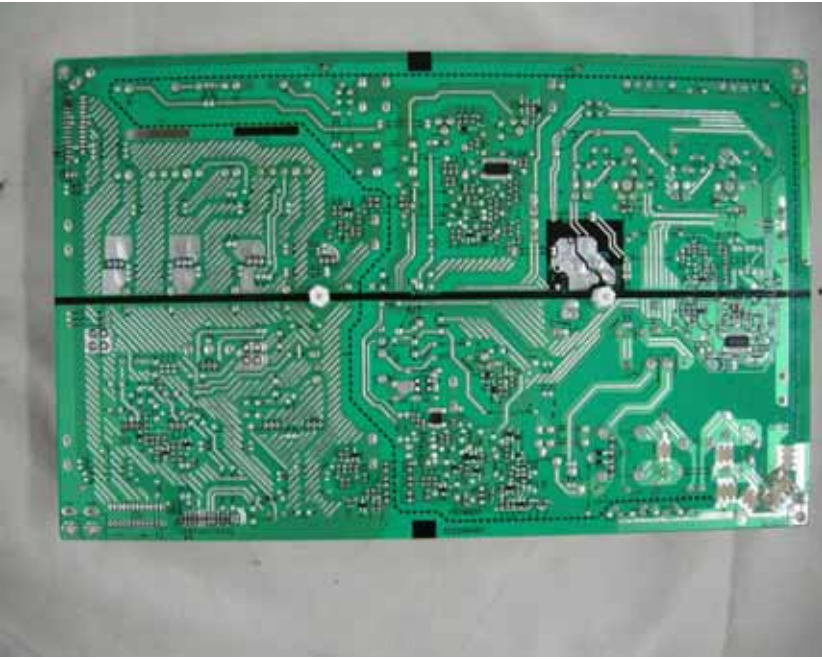


2. Power

2.1 Front



2.2 Rear



3. LCD

3.1 Front



3.2 Rear

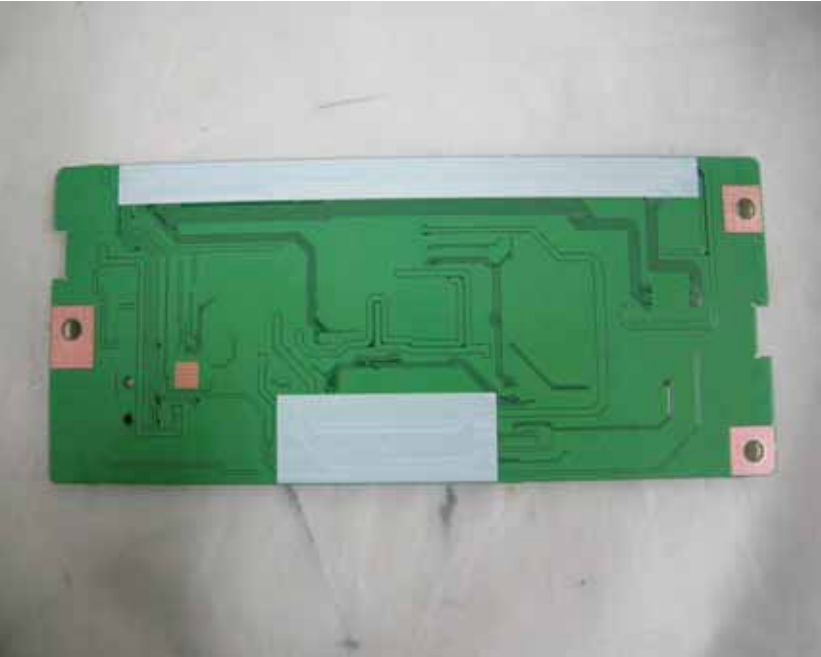


4. CTRL

4.1 Front



4.2 Rear



5. INVERTER

5.1 Front



5.2 Rear



6. IR

6.1 Front



6.2 Rear



7 SWITCH

7.1 Front



7.2 Rear



8. TUNER(See main board)

