

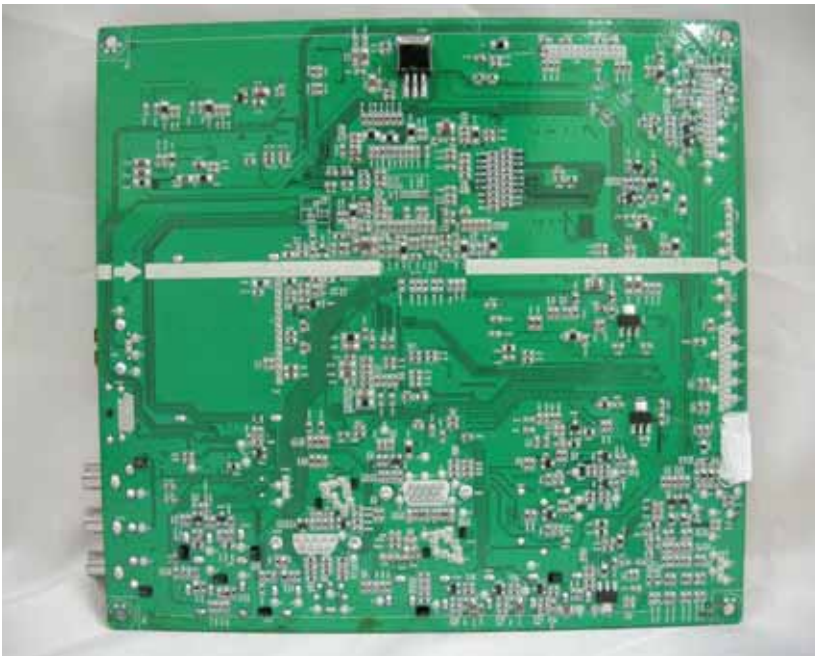
INTERNAL PHOTO

1. MAIN

1.1 Front

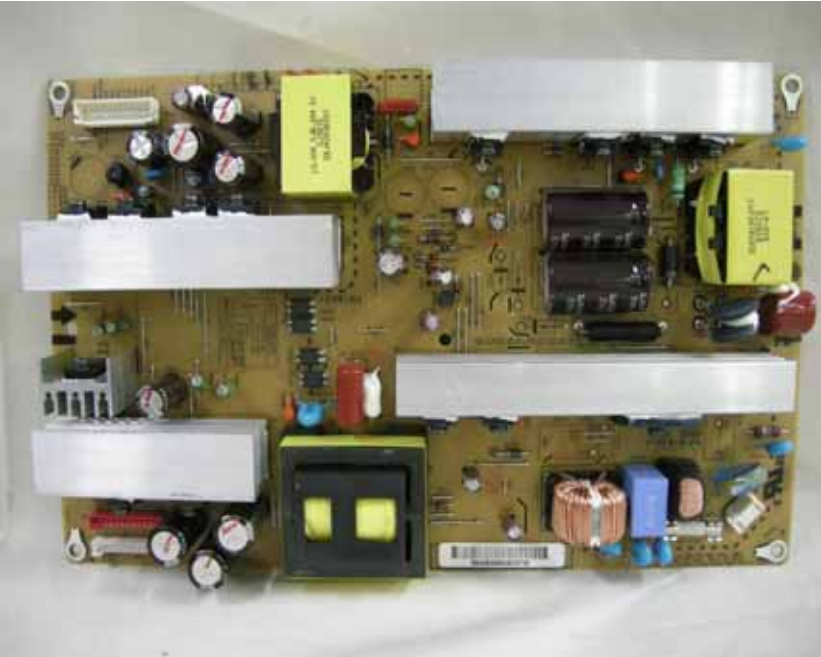


1.2 Rear

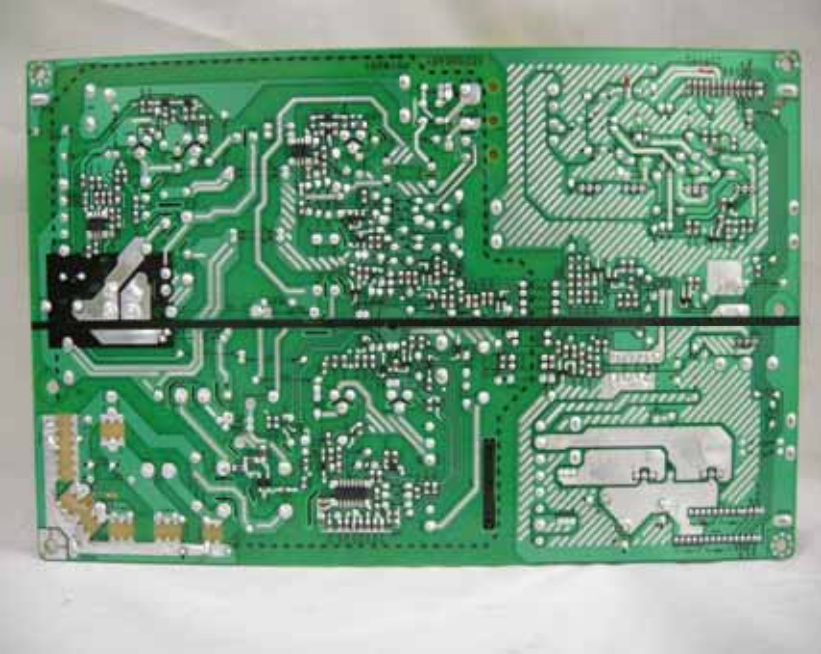


2. Power

2.1 Front



2.2 Rear



3. LCD

3.1 Front



3.2 Rear



4. CTRL

4.1 Front



4.2 Rear



5. FRONT

5.1 Front



5.2 Rear

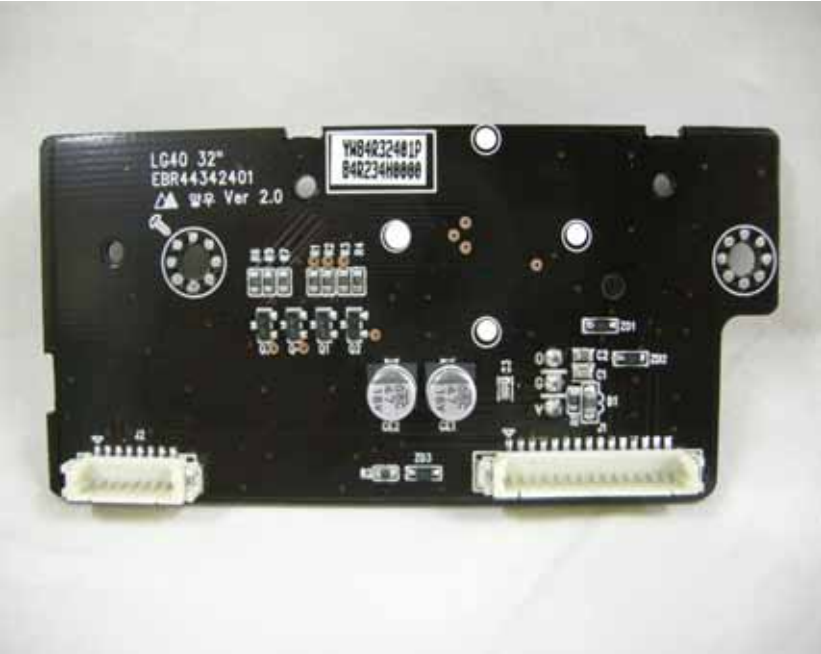


6. IR

6.1 Front



6.2 Rear



7. DVD ROM

7.1 Front



7.2 Rear

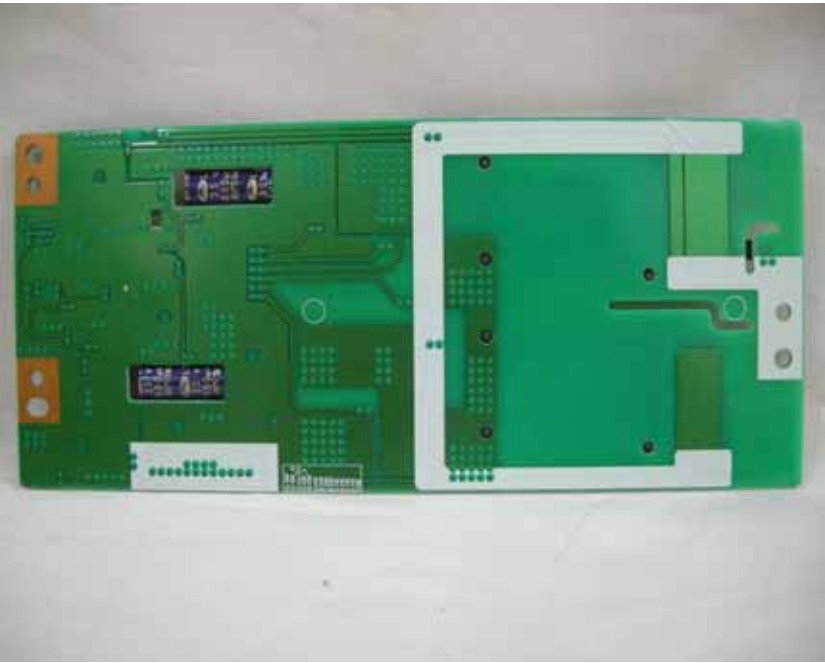


8. INVERTER

8.1 Front



8.2 Rear



9. TUNER(See main board)

