



Specification

Product name: 5.8G broadcast module

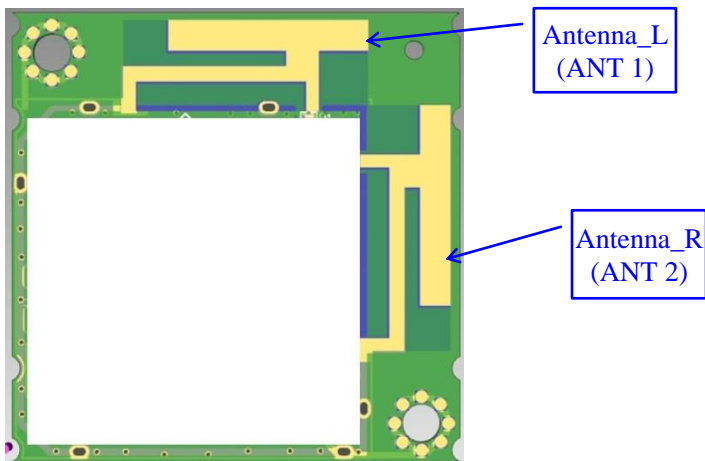
Product model: WL1BKT23

Antenna Type: PCB Printing Antenna

Manufacturer: SHENZHENSHI XINZHONGXIN TECHNOLOGY CO., LTD.

Ben: V1.0

Effective Date: 2022-12-19





Antenna_L (ANT 1)

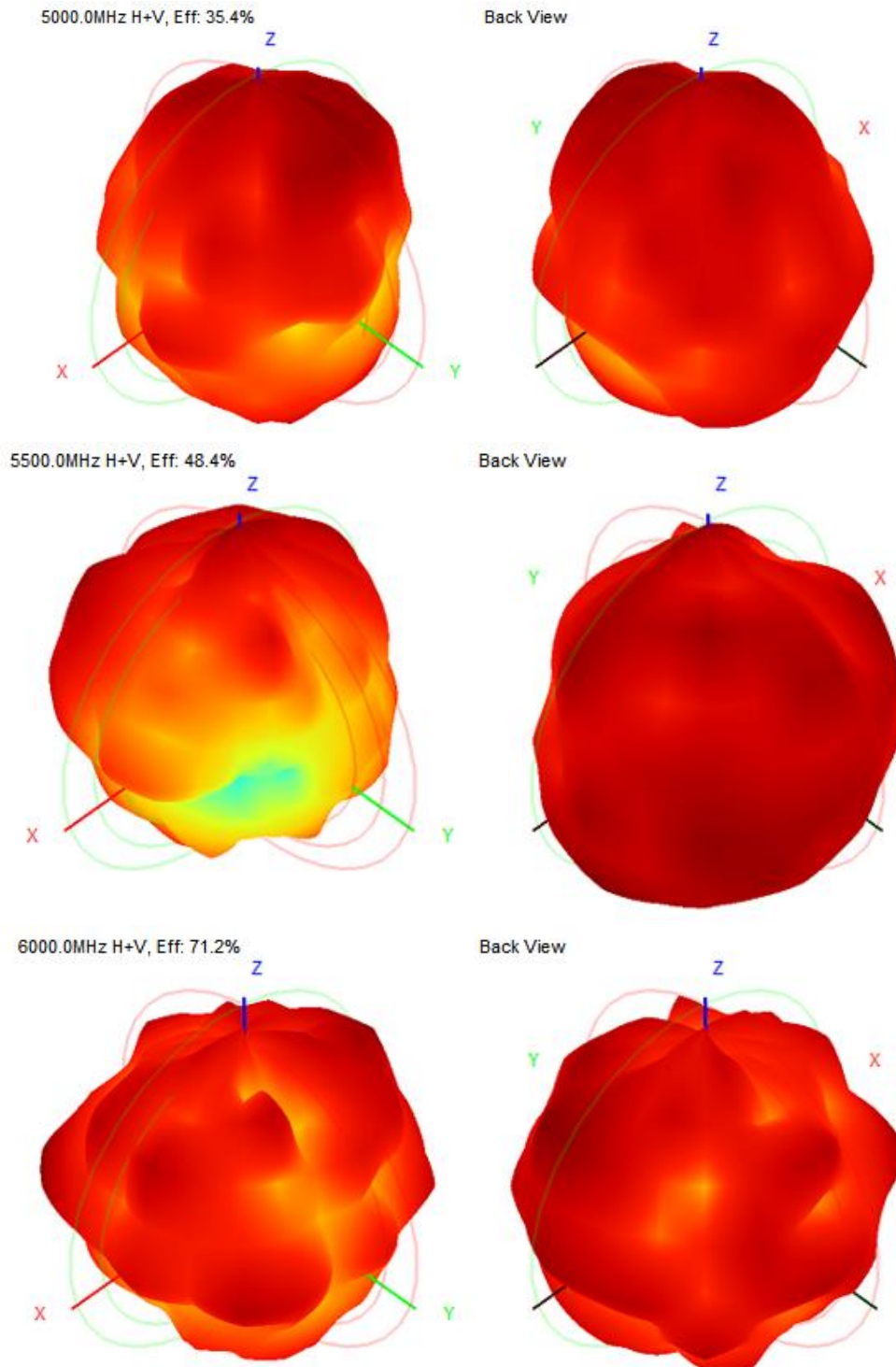
Parameters	Min	Typ	Max	Unit
Frequency range	5000	5500	6000	MHz
Directivity		全向		dBi
Full band gain	0.52	1.69	3.76	
SWR	<2	<2	<2	
Impedance		50		Ohm
Material	FR-4			

Antenna Efficiency Antenna_L (ANT 1)

Frequency (MHz)	Gain (dBi)	Efficiency (%)	Frequency (MHz)	Gain (dBi)	Efficiency (%)
5000.0	0.52	35.44	5520.0	2.08	54.26
5020.0	1.57	34.66	5540.0	2.19	54.38
5040.0	0.56	35.19	5560.0	2.50	52.41
5060.0	0.22	35.41	5580.0	2.28	54.43
5080.0	0.52	36.30	5600.0	3.43	57.12
5100.0	0.53	35.61	5620.0	2.48	52.61
5120.0	0.33	31.73	5640.0	1.67	49.01
5140.0	-0.45	32.34	5660.0	2.38	47.60
5160.0	1.17	32.85	5680.0	1.67	49.48
5180.0	0.57	34.08	5700.0	1.89	50.98
5200.0	0.30	32.48	5720.0	1.73	52.44
5220.0	0.21	34.16	5740.0	1.85	52.37
5240.0	0.95	38.13	5760.0	2.36	52.24
5260.0	1.08	40.89	5780.0	1.45	47.26
5280.0	1.22	41.65	5800.0	2.70	48.15
5300.0	1.20	43.90	5820.0	1.78	46.34
5320.0	1.42	47.08	5840.0	3.39	49.62
5340.0	1.61	44.79	5860.0	2.34	57.23
5360.0	2.33	46.74	5880.0	2.45	51.10
5380.0	2.22	48.51	5900.0	3.11	54.93
5400.0	2.38	49.70	5920.0	2.78	65.34
5420.0	2.57	53.03	5940.0	4.16	69.29
5440.0	2.03	50.61	5960.0	2.53	65.71
5460.0	1.62	46.87	5980.0	3.49	67.78
5480.0	1.53	47.25	6000.0	3.76	71.20
5500.0	1.69	48.44			



Antenna_L (ANT 1) 3D Pattern





深圳市芯中芯科技有限公司
SHENZHENSHI XINZHONGXIN TECHNOLOGY CO., LTD.

WL1BKT23

Antenna_R (ANT 2)

Parameters	Min	Typ	Max	Unit
Frequency range	5000	5500	6000	MHz
Directivity		全向		dBi
Full band gain	0.25	2.43	3.55	
SWR	<2	<2	<2	
Impedance		50		Ohm
Material	FR-4			

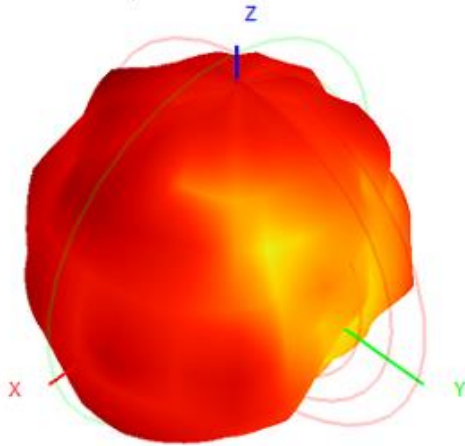
Antenna Efficiency Antenna_R (ANT 2)

Frequency (MHz)	Gain (dBi)	Efficiency (%)	Frequency (MHz)	Gain (dBi)	Efficiency (%)
5000.0	0.25	26.89	5520.0	2.64	62.86
5020.0	0.14	29.31	5540.0	2.55	57.95
5040.0	0.95	33.59	5560.0	1.68	52.38
5060.0	0.91	40.46	5580.0	2.55	55.26
5080.0	1.63	43.64	5600.0	2.51	59.13
5100.0	1.52	45.23	5620.0	3.01	55.92
5120.0	1.71	45.60	5640.0	2.20	55.53
5140.0	1.73	47.79	5660.0	1.61	49.97
5160.0	2.10	54.27	5680.0	1.83	53.19
5180.0	2.40	55.54	5700.0	1.45	53.17
5200.0	2.20	53.93	5720.0	0.96	52.23
5220.0	2.55	54.56	5740.0	1.67	48.44
5240.0	2.06	54.39	5760.0	1.79	48.71
5260.0	2.57	58.85	5780.0	2.73	44.91
5280.0	2.76	56.03	5800.0	2.25	43.52
5300.0	2.81	59.70	5820.0	0.84	40.55
5320.0	3.70	60.19	5840.0	2.08	44.00
5340.0	3.06	58.34	5860.0	1.64	43.49
5360.0	2.22	57.19	5880.0	1.13	39.43
5380.0	2.54	56.95	5900.0	1.53	45.40
5400.0	2.52	56.49	5920.0	3.29	51.25
5420.0	2.43	60.99	5940.0	3.52	58.89
5440.0	2.34	56.57	5960.0	3.14	56.12
5460.0	1.93	52.88	5980.0	1.90	55.25
5480.0	1.55	54.35	6000.0	3.55	58.73
5500.0	2.43	53.88			

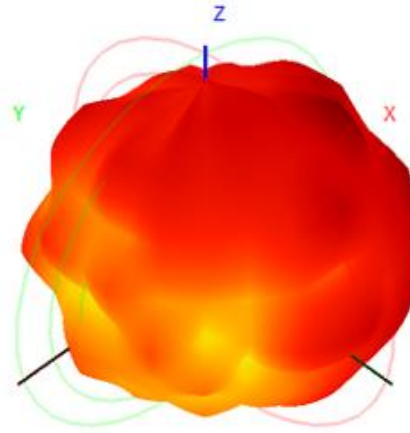


Antenna_R (ANT 2) 3D Pattern

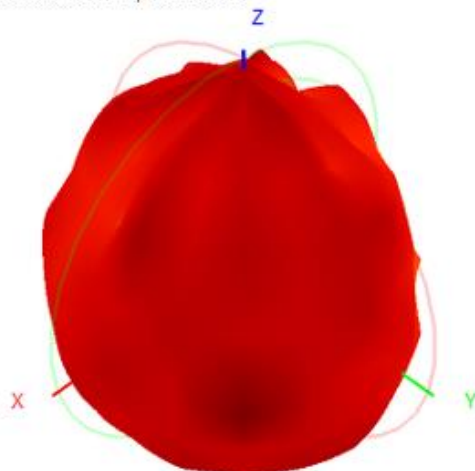
5000.0MHz H+V, Eff: 26.9%



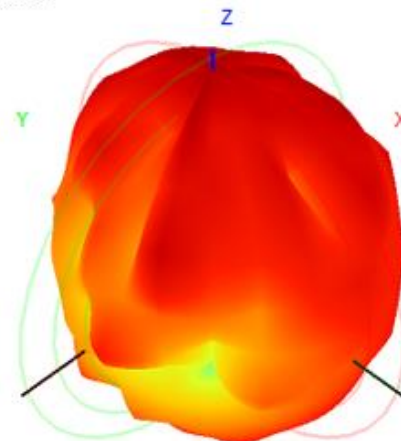
Back View



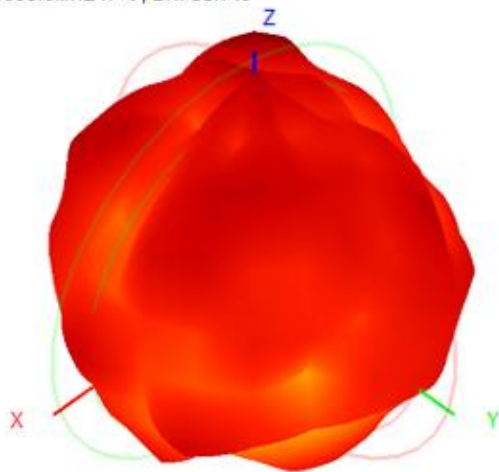
5500.0MHz H+V, Eff: 53.9%



Back View



6000.0MHz H+V, Eff: 58.7%



Back View

