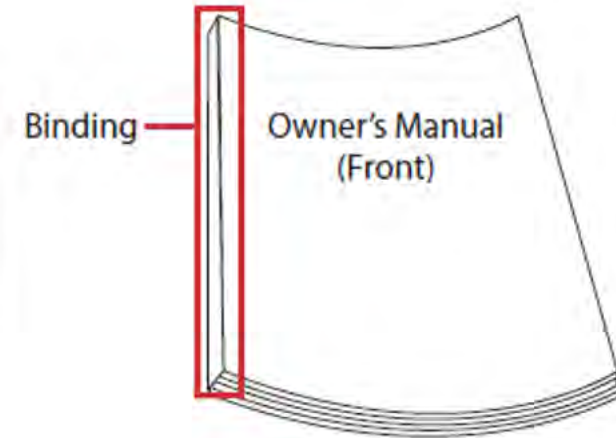
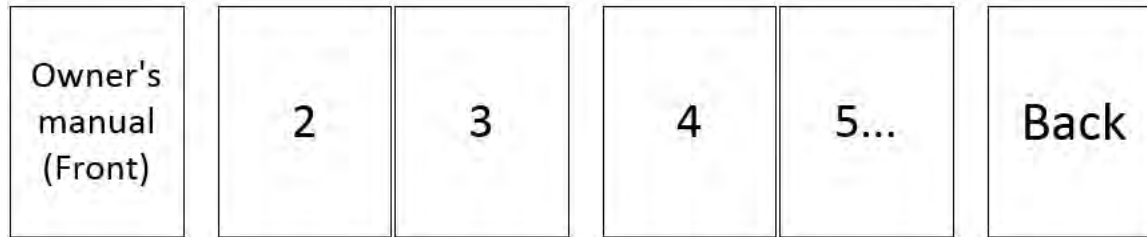


## Pagination & Folding



## Printing Specifications

<b>Material</b>	Cover	Woodfree 100 g/m <sup>2</sup>	<b>Note</b>		<b>GYU HWAN JEONG</b>		
	Inner	Woodfree 80 g/m <sup>2</sup>					
<b>Coating</b>	Cover	Uncoated					
	Inner	Uncoated					
<b>Color</b>	Cover	1 color (Black)					
	Inner	1 color (Black)					
<b>Size</b>		80 x 80 mm					
<b>Binding Method</b>		In order					
<b>Book Binding</b>		Perfect Binding					
<b>Completed total pages</b>		68					
					<b>Prepared</b>	<b>Description</b>	Manual
					2020-07-23		
					<b>Checked</b>	<b>P/No.</b>	MFL71742902
					<b>Appoved</b>	<b>Ver.</b>	1.0



# Only for PV (LG\_DV)

SIMPLE MANUAL

## Portable Bluetooth Speaker

---

MODELS

PN1



M FL71742902

DV\_2007\_Rev01

[www.lg.com](http://www.lg.com)

Copyright © 2020 LG Electronics Inc.  
All Rights Reserved.



## ENGLISH

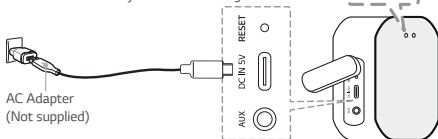
### LED 1 (Battery LED) status

Fully Charged: Green → White (with the power on),  
Green → Off (with the power off) / Charging: Red

### LED 2 (Bluetooth LED) status

Green: ≥ 70 % / Amber: > 10 %

ⓘ Blinking red indicates the battery needs to be charged.



<b>Power</b>	Power On / Off ..... Press <b>⏻</b>
<b>Battery</b>	Check Battery Status ..... Hold <b>⏻</b> for 2 seconds
<b>Bluetooth</b>	To pair your mobile device, select <b>LG-PN1(XX)</b> from device list. (LED 2 (Bluetooth LED): Blink → ON)
	Ready to pair another device ..... Hold <b>⌘</b> for 2 seconds
<b>Playback Controls</b>	Play / Pause ..... Press <b>⏮</b>
	Forward Skip ..... Press <b>⏭</b> X 2
	Backward Skip ..... Press <b>⏪</b> X 3


<b>Handsfree</b>	Receive / Disconnect ..... Press <b>▶</b>
<b>Volume</b>	Volume Control ..... Press <b>-</b> or <b>+</b>
<b>Voice Command</b>	Use voice command of your smart device ..... Press <b>⏻</b>
<b>Dual Mode</b>	Hold <b>Ⓜ</b> for 2 seconds of the each speaker's. (LED 1 (Dual Mode LED): Blink → Blink )

### Dual Mode



## Specification

### Power Supply:

- 5 V  2 A (AC Adapter)
- Built-in rechargeable battery

**Power consumption:** Refer to the main label.

### Dimensions (W x H x D):

- Approx. 138 mm X 74.6 mm X 38.3 mm

**Operating Temperature:** 5 °C to 35 °C

**Operating Humidity:** 5 % to 60 %

**Water-proof:** IPX5

- Degree of protection against jets of water.

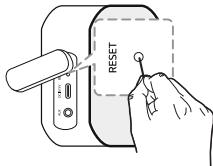
**Battery Life:** Approx. 5 hours

(Varies by volume level and audio content.)

- Design and specifications are subject to change without notice.

## Important Notice

- Fully charge the device before using for the first time.
- It is recommended that you use the 5 V AC adapter (more than 2 A) with this unit
- **Resetting**  
If have a malfunction with the speaker, press the **RESET** button.



For more information, download the online owner's manual. <http://www.lg.com>

## ENGLISH

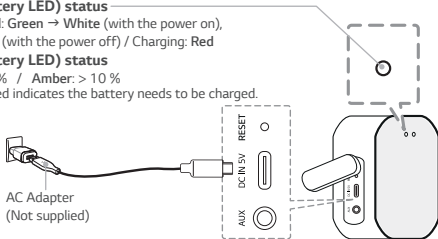
### LED 1 (Battery LED) status

Fully Charged: Green → White (with the power on),  
Green → Off (with the power off) / Charging: Red

### LED 2 (Bluetooth LED) status

Green: ≥ 70 % / Amber: > 10 %

⚠ Blinking red indicates the battery needs to be charged.



<b>Power</b>	Power On / Off .....	Press <b>⏻</b>
<b>Battery</b>	Check Battery Status .....	Hold <b>⏻</b> for 2 seconds
<b>Bluetooth</b>	To pair your mobile device, select <b>LG-PN1(XX)</b> from device list. (LED 2 (Bluetooth LED): Blink → ON)	
	Ready to pair another device .....	Hold <b>⌘</b> for 2 seconds
<b>Playback Controls</b>	Play / Pause .....	Press <b>⏮</b>
	Forward Skip .....	Press <b>⏭</b> X 2
	Backward Skip .....	Press <b>⏮</b> X 3

<b>Handsfree</b>	Receive / Disconnect ..... Press <b>▶</b>
<b>Volume</b>	Volume Control ..... Press <b>—</b> or <b>+</b>
<b>Voice Command</b>	Use voice command of your smart device ..... Press <b>⏏</b>
<b>Dual Mode</b>	Hold <b>⏏</b> for 2 seconds of the each speaker's. (LED 1 (Dual Mode LED): Blink → Blink )


### Dual Mode





## Specification

### Power Supply:

- 5 V  2 A (AC Adapter)
- Built-in rechargeable battery

**Power consumption:** Refer to the main label.

### Dimensions (W x H x D):

- Approx. 138 mm X 74.6 mm X 38.3 mm

**Operating Temperature:** 5 °C to 35 °C

**Operating Humidity:** 5 % to 60 %

### Water-proof: IPX5

- Degree of protection against jets of water.

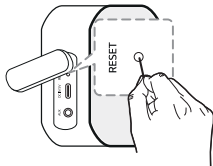
**Battery Life:** Approx. 5 hours

(Varies by volume level and audio content.)

- Design and specifications are subject to change without notice.

## Important Notice

- Fully charge the device before using for the first time.
- It is recommended that you use the 5 V AC adapter (more than 2 A) with this unit
- **Resetting**  
If have a malfunction with the speaker, press the **RESET** button.



For more information, download the online owner's manual. <http://www.lg.com>

## ENGLISH

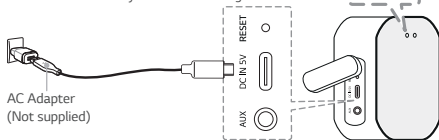
### LED 1 (Battery LED) status

Fully Charged: Green → White (with the power on),  
Green → Off (with the power off) / Charging: Red

### LED 2 (Bluetooth LED) status

Green: ≥ 70 % / Amber: > 10 %

ⓘ Blinking red indicates the battery needs to be charged.



<b>Power</b>	Power On / Off ..... Press <b>⏻</b>
<b>Battery</b>	Check Battery Status ..... Hold <b>⏻</b> for 2 seconds
<b>Bluetooth</b>	To pair your mobile device, select <b>LG-PN1(XX)</b> from device list. (LED 2 (Bluetooth LED): Blink → ON)
	Ready to pair another device ..... Hold <b>⌘</b> for 2 seconds
<b>Playback Controls</b>	Play / Pause ..... Press <b>⏮</b>
	Forward Skip ..... Press <b>⏭</b> X 2
	Backward Skip ..... Press <b>⏮</b> X 3


<b>Handsfree</b>	Receive / Disconnect ..... Press <b>▶</b>
<b>Volume</b>	Volume Control ..... Press <b>-</b> or <b>+</b>
<b>Voice Command</b>	Use voice command of your smart device ..... Press <b>⏺</b>
<b>Dual Mode</b>	Hold <b>⏺</b> for 2 seconds of the each speaker's. (LED 1 (Dual Mode LED): Blink → Blink )

### Dual Mode



## Specification

### Power Supply:

- 5 V  2 A (AC Adapter)
- Built-in rechargeable battery

**Power consumption:** Refer to the main label.

### Dimensions (W x H x D):

- Approx. 138 mm X 74.6 mm X 38.3 mm

**Operating Temperature:** 5 °C to 35 °C

**Operating Humidity:** 5 % to 60 %

**Water-proof:** IPX5

- Degree of protection against jets of water.

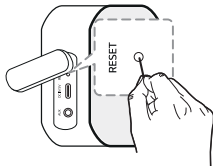
**Battery Life:** Approx. 5 hours

(Varies by volume level and audio content.)

- Design and specifications are subject to change without notice.

## Important Notice

- Fully charge the device before using for the first time.
- It is recommended that you use the 5 V AC adapter (more than 2 A) with this unit
- **Resetting**  
If have a malfunction with the speaker, press the **RESET** button.



For more information, download the online owner's manual. <http://www.lg.com>

## ENGLISH

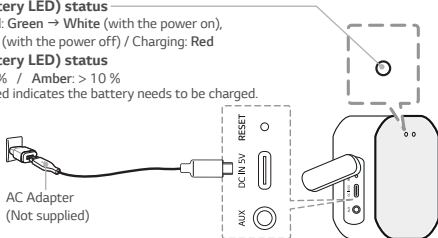
### LED 1 (Battery LED) status

Fully Charged: Green → White (with the power on),  
Green → Off (with the power off) / Charging: Red

### LED 1 (Battery LED) status

Green: ≥ 70 % / Amber: > 10 %

⚠ Blinking red indicates the battery needs to be charged.



<b>Power</b>	Power On / Off .....	Press <b>⏻</b>
<b>Battery</b>	Check Battery Status .....	Hold <b>⏻</b> for 2 seconds
<b>Bluetooth</b>	To pair your mobile device, select <b>LG-PN1(XX)</b> from device list. (LED 2 (Bluetooth LED): Blink → ON)	
	Ready to pair another device .....	Hold <b>⌘</b> for 2 seconds
<b>Playback Controls</b>	Play / Pause .....	Press <b>⏮</b>
	Forward Skip .....	Press <b>⏭</b> X 2
	Backward Skip .....	Press <b>⏮</b> X 3


<b>Handsfree</b>	Receive / Disconnect ..... Press <b>▶</b>
<b>Volume</b>	Volume Control ..... Press <b>—</b> or <b>+</b>
<b>Voice Command</b>	Use voice command of your smart device ..... Press <b>⏏</b>
<b>Dual Mode</b>	Hold <b>⏏</b> for 2 seconds of the each speaker's. (LED 1 (Dual Mode LED): Blink → Blink )

### Dual Mode



## Specification

### Power Supply:

- 5 V  2 A (AC Adapter)
- Built-in rechargeable battery

**Power consumption:** Refer to the main label.

### Dimensions (W x H x D):

- Approx. 138 mm X 74.6 mm X 38.3 mm

**Operating Temperature:** 5 °C to 35 °C

**Operating Humidity:** 5 % to 60 %

### Water-proof: IPX5

- Degree of protection against jets of water.

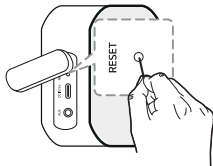
**Battery Life:** Approx. 5 hours

(Varies by volume level and audio content.)

- Design and specifications are subject to change without notice.

## Important Notice

- Fully charge the device before using for the first time.
- It is recommended that you use the 5 V AC adapter (more than 2 A) with this unit
- **Resetting**  
If have a malfunction with the speaker, press the **RESET** button.



For more information, download the online owner's manual. <http://www.lg.com>

## ENGLISH

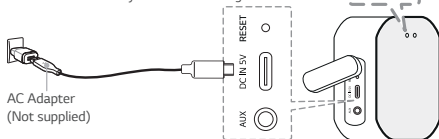
### LED 1 (Battery LED) status

Fully Charged: Green → White (with the power on),  
Green → Off (with the power off) / Charging: Red

### LED 2 (Bluetooth LED) status

Green: ≥ 70 % / Amber: > 10 %

ⓘ Blinking red indicates the battery needs to be charged.



<b>Power</b>	Power On / Off .....	Press
<b>Battery</b>	Check Battery Status .....	Hold  for 2 seconds
<b>Bluetooth</b>	To pair your mobile device, select <b>LG-PN1(XX)</b> from device list. (LED 2 (Bluetooth LED): Blink → ON)	
	Ready to pair another device .....	Hold  for 2 seconds
<b>Playback Controls</b>	Play / Pause .....	Press
	Forward Skip .....	Press  X 2
	Backward Skip .....	Press  X 3




<b>Handsfree</b>	Receive / Disconnect ..... Press <b>▶</b>
<b>Volume</b>	Volume Control ..... Press <b>—</b> or <b>+</b>
<b>Voice Command</b>	Use voice command of your smart device ..... Press <b>⏏</b>
<b>Dual Mode</b>	Hold <b>⏏</b> for 2 seconds of the each speaker's. (LED 1 (Dual Mode LED): Blink → Blink )

### Dual Mode



## Specification

### Power Supply:

- 5 V  2 A (AC Adapter)
- Built-in rechargeable battery

**Power consumption:** Refer to the main label.

### Dimensions (W x H x D):

- Approx. 138 mm X 74.6 mm X 38.3 mm

**Operating Temperature:** 5 °C to 35 °C

**Operating Humidity:** 5 % to 60 %

### Water-proof: IPX5

- Degree of protection against jets of water.

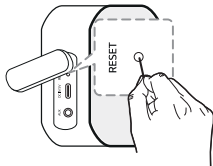
**Battery Life:** Approx. 5 hours

(Varies by volume level and audio content.)

- Design and specifications are subject to change without notice.

## Important Notice

- Fully charge the device before using for the first time.
- It is recommended that you use the 5 V AC adapter (more than 2 A) with this unit
- **Resetting**  
If have a malfunction with the speaker, press the **RESET** button.



For more information, download the online owner's manual. <http://www.lg.com>

## ENGLISH

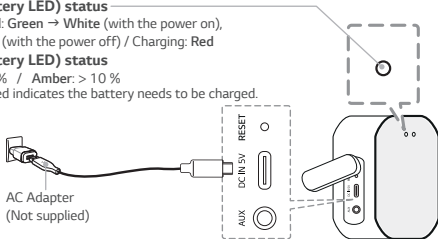
### LED 1 (Battery LED) status

Fully Charged: Green → White (with the power on),  
Green → Off (with the power off) / Charging: Red

### LED 1 (Battery LED) status

Green: ≥ 70 % / Amber: > 10 %

ⓘ Blinking red indicates the battery needs to be charged.



<b>Power</b>	Power On / Off ..... Press
<b>Battery</b>	Check Battery Status ..... Hold  for 2 seconds
<b>Bluetooth</b>	To pair your mobile device, select <b>LG-PN1(XX)</b> from device list. (LED 2 (Bluetooth LED): Blink → ON)
	Ready to pair another device ..... Hold  for 2 seconds
<b>Playback Controls</b>	Play / Pause ..... Press
	Forward Skip ..... Press  X 2
	Backward Skip ..... Press  X 3


<b>Handsfree</b>	Receive / Disconnect ..... Press <b>▶</b>
<b>Volume</b>	Volume Control ..... Press <b>-</b> or <b>+</b>
<b>Voice Command</b>	Use voice command of your smart device ..... Press <b>⏺</b>
<b>Dual Mode</b>	Hold <b>⏺</b> for 2 seconds of the each speaker's. (LED 1 (Dual Mode LED): Blink → Blink )

### Dual Mode



## Specification

### Power Supply:

- 5 V  2 A (AC Adapter)

- Built-in rechargeable battery

**Power consumption:** Refer to the main label.

### Dimensions (W x H x D):

- Approx. 138 mm X 74.6 mm X 38.3 mm

**Operating Temperature:** 5 °C to 35 °C

**Operating Humidity:** 5 % to 60 %

### Water-proof: IPX5

- Degree of protection against jets of water.

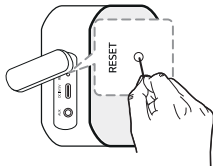
**Battery Life:** Approx. 5 hours

(Varies by volume level and audio content.)

- Design and specifications are subject to change without notice.

## Important Notice

- Fully charge the device before using for the first time.
- It is recommended that you use the 5 V AC adapter (more than 2 A) with this unit
- **Resetting**  
If have a malfunction with the speaker, press the **RESET** button.



For more information, download the online owner's manual. <http://www.lg.com>

## ENGLISH

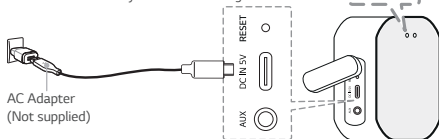
### LED 1 (Battery LED) status

Fully Charged: Green → White (with the power on),  
Green → Off (with the power off) / Charging: Red

### LED 1 (Battery LED) status

Green: ≥ 70 % / Amber: > 10 %

ⓘ Blinking red indicates the battery needs to be charged.



<b>Power</b>	Power On / Off ..... Press <b>⏻</b>
<b>Battery</b>	Check Battery Status ..... Hold <b>⏻</b> for 2 seconds
<b>Bluetooth</b>	To pair your mobile device, select <b>LG-PN1(XX)</b> from device list. (LED 2 (Bluetooth LED): Blink → ON)
	Ready to pair another device ..... Hold <b>⌘</b> for 2 seconds
<b>Playback Controls</b>	Play / Pause ..... Press <b>⏮</b>
	Forward Skip ..... Press <b>⏭</b> X 2
	Backward Skip ..... Press <b>⏮</b> X 3


<b>Handsfree</b>	Receive / Disconnect ..... Press <b>▶</b>
<b>Volume</b>	Volume Control ..... Press <b>—</b> or <b>+</b>
<b>Voice Command</b>	Use voice command of your smart device ..... Press <b>⏻</b>
<b>Dual Mode</b>	Hold <b>⏻</b> for 2 seconds of the each speaker's. (LED 1 (Dual Mode LED): Blink → Blink )

### Dual Mode



## Specification

### Power Supply:

- 5 V  2 A (AC Adapter)
- Built-in rechargeable battery

**Power consumption:** Refer to the main label.

### Dimensions (W x H x D):

- Approx. 138 mm X 74.6 mm X 38.3 mm

**Operating Temperature:** 5 °C to 35 °C

**Operating Humidity:** 5 % to 60 %

### Water-proof: IPX5

- Degree of protection against jets of water.

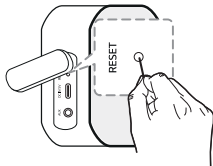
**Battery Life:** Approx. 5 hours

(Varies by volume level and audio content.)

- Design and specifications are subject to change without notice.

## Important Notice

- Fully charge the device before using for the first time.
- It is recommended that you use the 5 V AC adapter (more than 2 A) with this unit
- **Resetting**  
If have a malfunction with the speaker, press the **RESET** button.



For more information, download the online owner's manual. <http://www.lg.com>



## ENGLISH

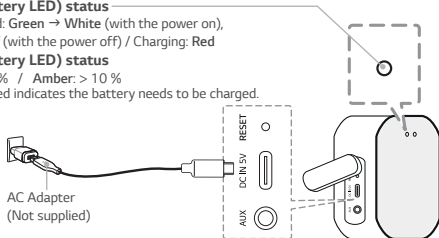
### LED 1 (Battery LED) status

Fully Charged: Green → White (with the power on),  
Green → Off (with the power off) / Charging: Red

### LED 1 (Battery LED) status

Green: ≥ 70 % / Amber: > 10 %

⚠ Blinking red indicates the battery needs to be charged.



<b>Power</b>	Power On / Off .....	Press <b>⏻</b>
<b>Battery</b>	Check Battery Status .....	Hold <b>⏻</b> for 2 seconds
<b>Bluetooth</b>	To pair your mobile device, select <b>LG-PN1(XX)</b> from device list. (LED 2 (Bluetooth LED): Blink → ON)	
	Ready to pair another device .....	Hold <b>⌘</b> for 2 seconds
<b>Playback Controls</b>	Play / Pause .....	Press <b>⏮</b>
	Forward Skip .....	Press <b>⏭</b> X 2
	Backward Skip .....	Press <b>⏮</b> X 3


<b>Handsfree</b>	Receive / Disconnect ..... Press <b>▶</b>
<b>Volume</b>	Volume Control ..... Press <b>—</b> or <b>+</b>
<b>Voice Command</b>	Use voice command of your smart device ..... Press <b>⏻</b>
<b>Dual Mode</b>	Hold <b>⏻</b> for 2 seconds of the each speaker's. (LED 1 (Dual Mode LED): Blink → Blink )

### Dual Mode



## Specification

### Power Supply:

- 5 V  2 A (AC Adapter)
- Built-in rechargeable battery

**Power consumption:** Refer to the main label.

### Dimensions (W x H x D):

- Approx. 138 mm X 74.6 mm X 38.3 mm

**Operating Temperature:** 5 °C to 35 °C

**Operating Humidity:** 5 % to 60 %

### Water-proof: IPX5

- Degree of protection against jets of water.

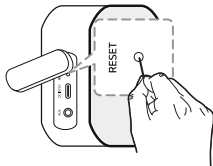
**Battery Life:** Approx. 5 hours

(Varies by volume level and audio content.)

- Design and specifications are subject to change without notice.

## Important Notice

- Fully charge the device before using for the first time.
- It is recommended that you use the 5 V AC adapter (more than 2 A) with this unit
- **Resetting**  
If have a malfunction with the speaker, press the **RESET** button.



For more information, download the online owner's manual. <http://www.lg.com>

## ENGLISH

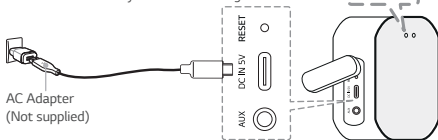
### LED 1 (Battery LED) status

Fully Charged: Green → White (with the power on),  
Green → Off (with the power off) / Charging: Red

### LED 2 (Bluetooth LED) status

Green: ≥ 70 % / Amber: > 10 %

ⓘ Blinking red indicates the battery needs to be charged.



<b>Power</b>	Power On / Off ..... Press <b>⏻</b>
<b>Battery</b>	Check Battery Status ..... Hold <b>⏻</b> for 2 seconds
<b>Bluetooth</b>	To pair your mobile device, select <b>LG-PN1(XX)</b> from device list. (LED 2 (Bluetooth LED): Blink → ON)
	Ready to pair another device ..... Hold <b>⌘</b> for 2 seconds
<b>Playback Controls</b>	Play / Pause ..... Press <b>⏮</b>
	Forward Skip ..... Press <b>⏭</b> X 2
	Backward Skip ..... Press <b>⏮</b> X 3


<b>Handsfree</b>	Receive / Disconnect ..... Press <b>▶ </b>
<b>Volume</b>	Volume Control ..... Press <b>—</b> or <b>+</b>
<b>Voice Command</b>	Use voice command of your smart device ..... Press <b>⏏</b>
<b>Dual Mode</b>	Hold <b>⏏</b> for 2 seconds of the each speaker's. (LED 1 (Dual Mode LED): Blink → Blink )

### Dual Mode



## Specification

### Power Supply:

- 5 V  2 A (AC Adapter)
- Built-in rechargeable battery

**Power consumption:** Refer to the main label.

### Dimensions (W x H x D):

- Approx. 138 mm X 74.6 mm X 38.3 mm

**Operating Temperature:** 5 °C to 35 °C

**Operating Humidity:** 5 % to 60 %

**Water-proof:** IPX5

- Degree of protection against jets of water.

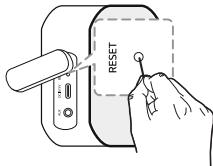
**Battery Life:** Approx. 5 hours

(Varies by volume level and audio content.)

- Design and specifications are subject to change without notice.

## Important Notice

- Fully charge the device before using for the first time.
- It is recommended that you use the 5 V AC adapter (more than 2 A) with this unit
- **Resetting**  
If have a malfunction with the speaker, press the **RESET** button.



For more information, download the online owner's manual. <http://www.lg.com>

## ENGLISH

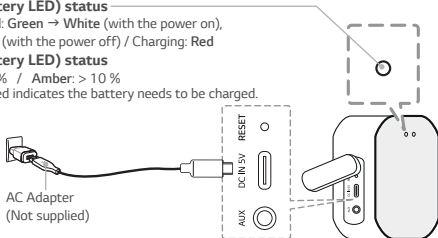
### LED 1 (Battery LED) status

Fully Charged: Green → White (with the power on),  
Green → Off (with the power off) / Charging: Red

### LED 1 (Battery LED) status

Green: ≥ 70 % / Amber: > 10 %

⚠ Blinking red indicates the battery needs to be charged.



<b>Power</b>	Power On / Off .....	Press <b>⏻</b>
<b>Battery</b>	Check Battery Status .....	Hold <b>⏻</b> for 2 seconds
<b>Bluetooth</b>	To pair your mobile device, select <b>LG-PN1(XX)</b> from device list. (LED 2 (Bluetooth LED): Blink → ON)	
	Ready to pair another device .....	Hold <b>⌘</b> for 2 seconds
<b>Playback Controls</b>	Play / Pause .....	Press <b>⏮</b>
	Forward Skip .....	Press <b>⏭</b> X 2
	Backward Skip .....	Press <b>⏮</b> X 3

<b>Handsfree</b>	Receive / Disconnect ..... Press <b>▶</b>
<b>Volume</b>	Volume Control ..... Press <b>—</b> or <b>+</b>
<b>Voice Command</b>	Use voice command of your smart device ..... Press <b>⏺</b>
<b>Dual Mode</b>	Hold <b>⏺</b> for 2 seconds of the each speaker's. (LED 1 (Dual Mode LED): Blink → Blink )


### Dual Mode





## Specification

### Power Supply:

- 5 V  2 A (AC Adapter)
- Built-in rechargeable battery

**Power consumption:** Refer to the main label.

### Dimensions (W x H x D):

- Approx. 138 mm X 74.6 mm X 38.3 mm

**Operating Temperature:** 5 °C to 35 °C

**Operating Humidity:** 5 % to 60 %

### Water-proof: IPX5

- Degree of protection against jets of water.

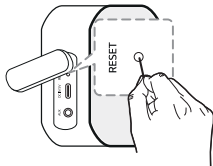
**Battery Life:** Approx. 5 hours

(Varies by volume level and audio content.)

- Design and specifications are subject to change without notice.

## Important Notice

- Fully charge the device before using for the first time.
- It is recommended that you use the 5 V AC adapter (more than 2 A) with this unit
- **Resetting**  
If have a malfunction with the speaker, press the **RESET** button.



For more information, download the online owner's manual. <http://www.lg.com>

## ENGLISH

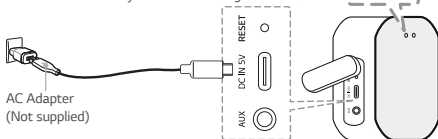
### LED 1 (Battery LED) status

Fully Charged: Green → White (with the power on),  
Green → Off (with the power off) / Charging: Red

### LED 2 (Bluetooth LED) status

Green: ≥ 70 % / Amber: > 10 %

ⓘ Blinking red indicates the battery needs to be charged.



<b>Power</b>	Power On / Off ..... Press <b>⏻</b>
<b>Battery</b>	Check Battery Status ..... Hold <b>⏻</b> for 2 seconds
<b>Bluetooth</b>	To pair your mobile device, select <b>LG-PN1(XX)</b> from device list. (LED 2 (Bluetooth LED): Blink → ON)
	Ready to pair another device ..... Hold <b>⌘</b> for 2 seconds
<b>Playback Controls</b>	Play / Pause ..... Press <b>⏮</b>
	Forward Skip ..... Press <b>⏭</b> X 2
	Backward Skip ..... Press <b>⏮</b> X 3

<b>Handsfree</b>	Receive / Disconnect ..... Press <b>▶</b>
<b>Volume</b>	Volume Control ..... Press <b>-</b> or <b>+</b>
<b>Voice Command</b>	Use voice command of your smart device ..... Press <b>⏺</b>
<b>Dual Mode</b>	Hold <b>⏺</b> for 2 seconds of the each speaker's. (LED 1 (Dual Mode LED): Blink → Blink )

### Dual Mode

