

# EUT INTERNAL PHOTOS

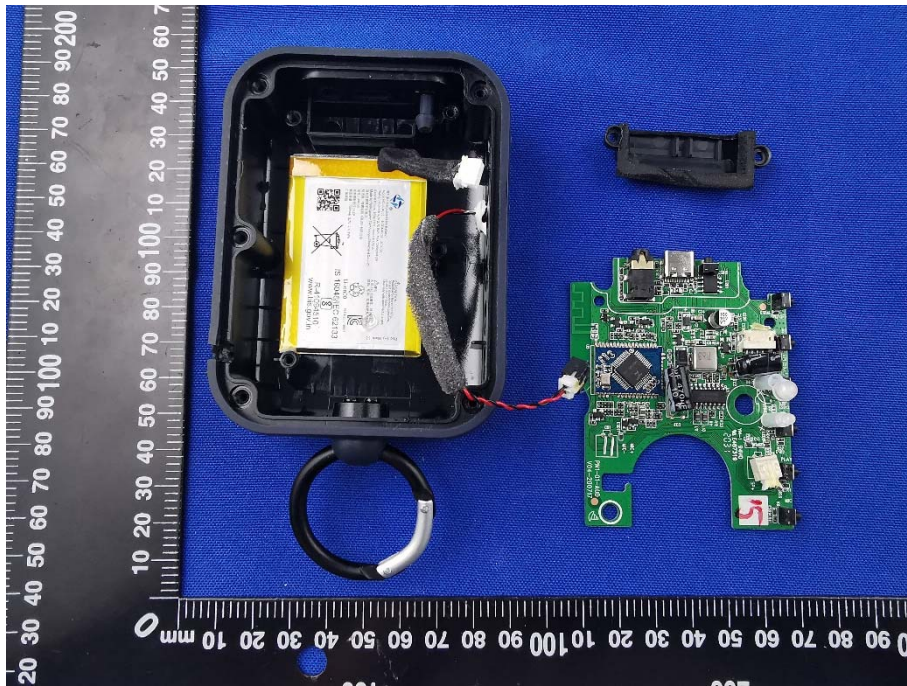
EUT UNCOVER VIEW



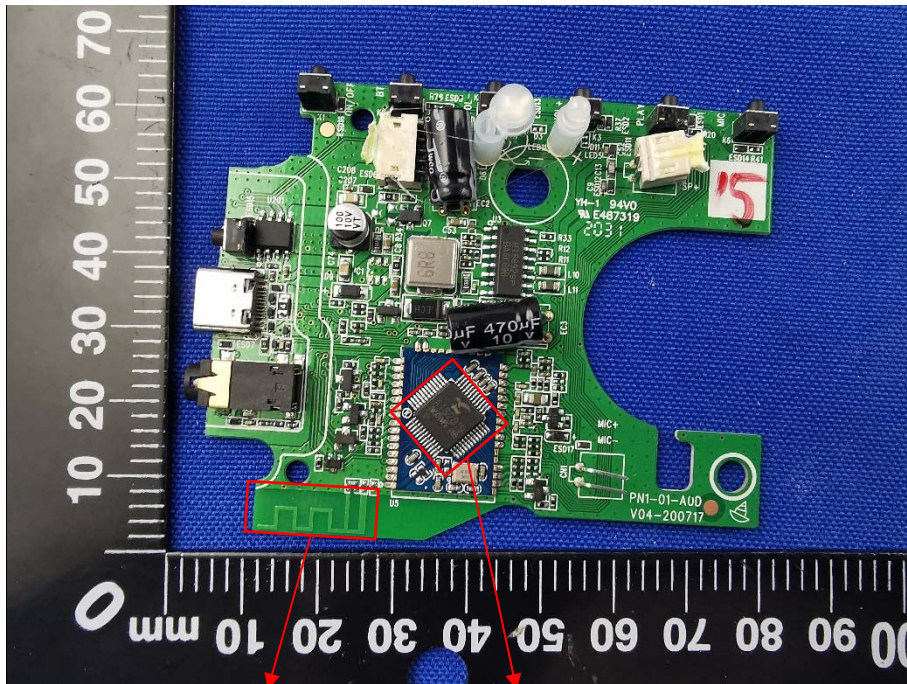
EUT UNCOVER VIEW



EUT UNCOVER VIEW



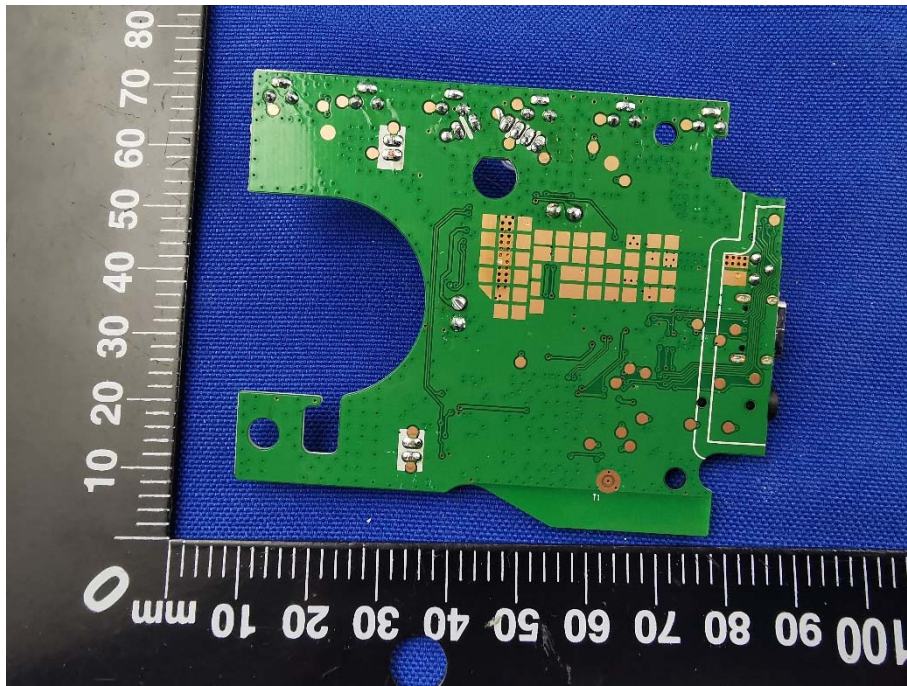
MAIN BOARD TOP VIEW



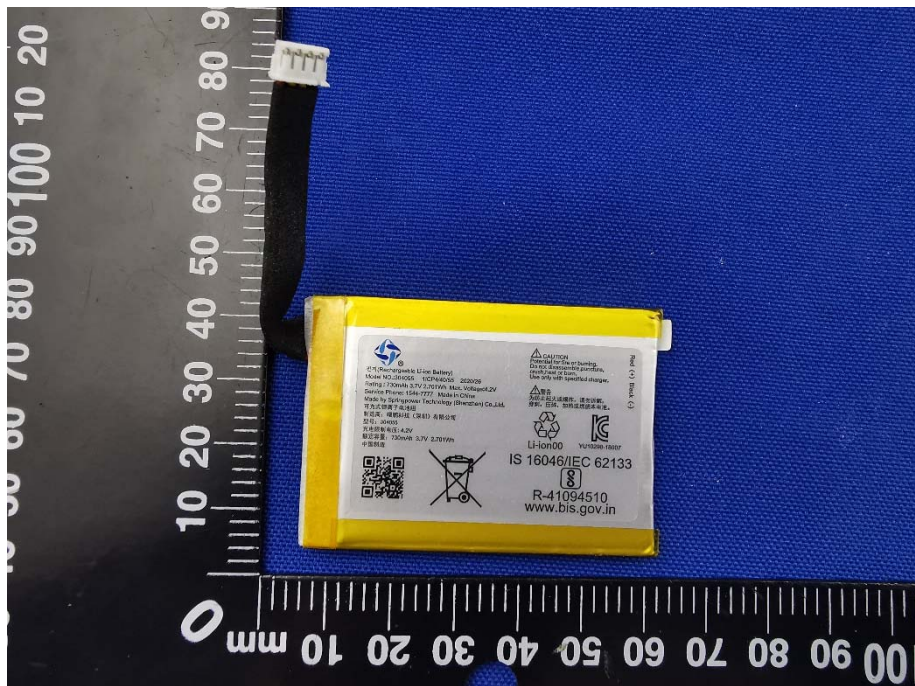
PCB Antenna

RF Chip

MAIN BOARD REAR VIEW



Battery Photo (FRONT)



Battery Photo (REAR)

