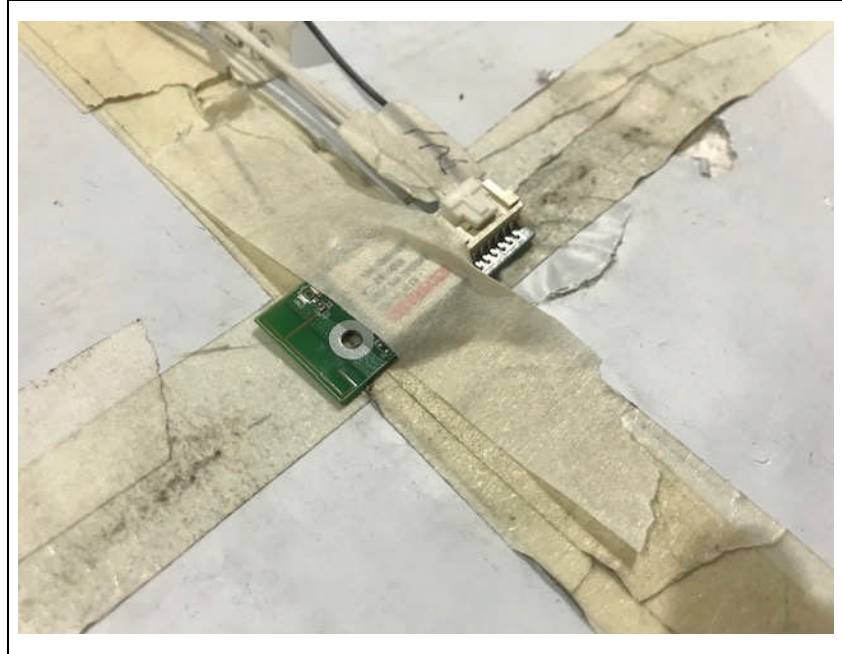


Test setup photos of EUT

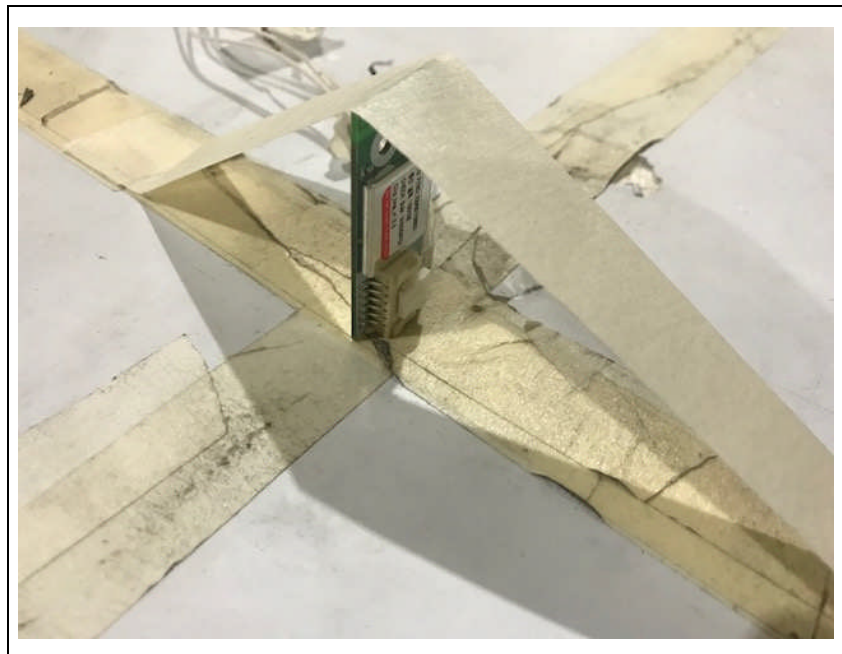
1. Orthogonal plane of EUT

- The testing was set in the three orthogonal planes and measured for each position (X, Y, Z).

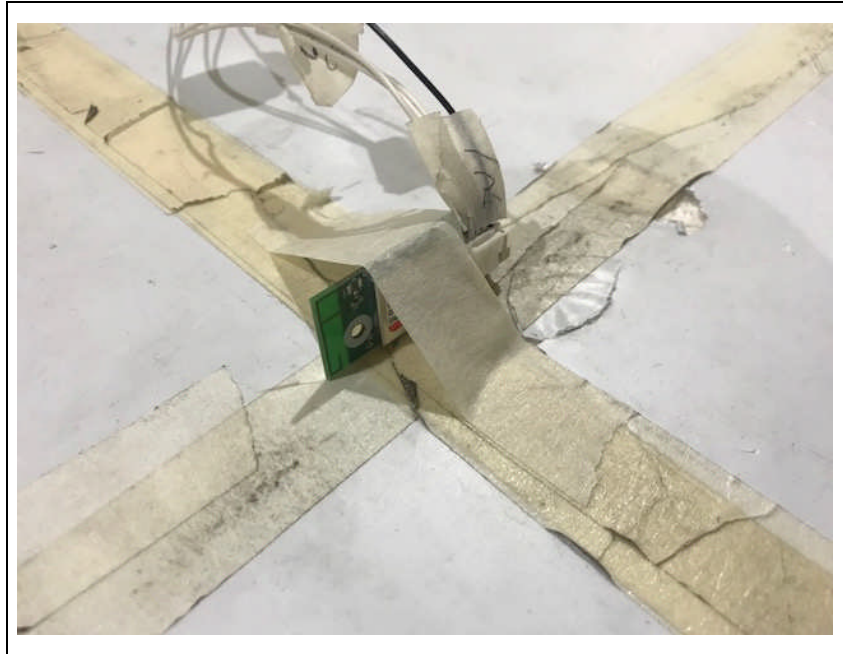
X-axis



Y-axis



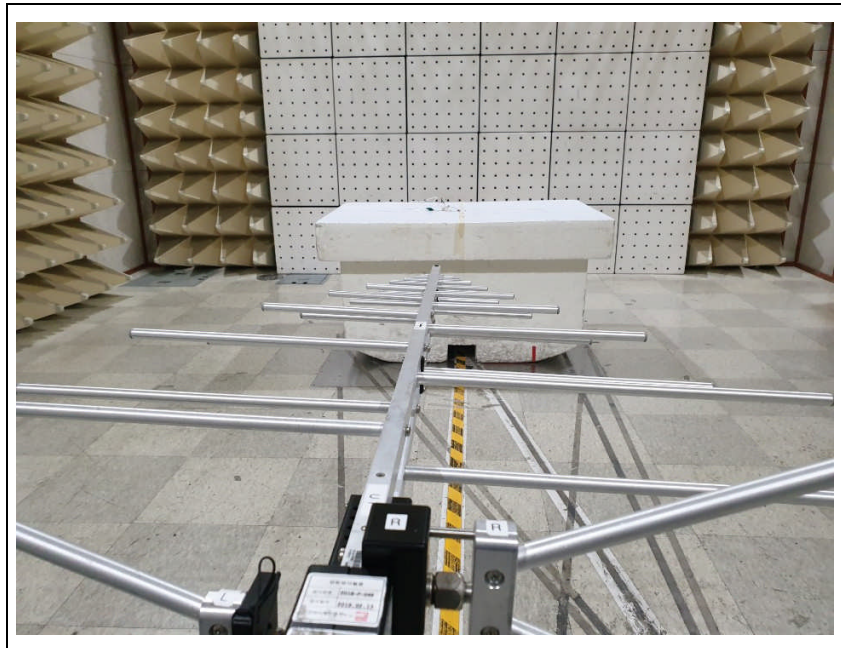
Z-axis



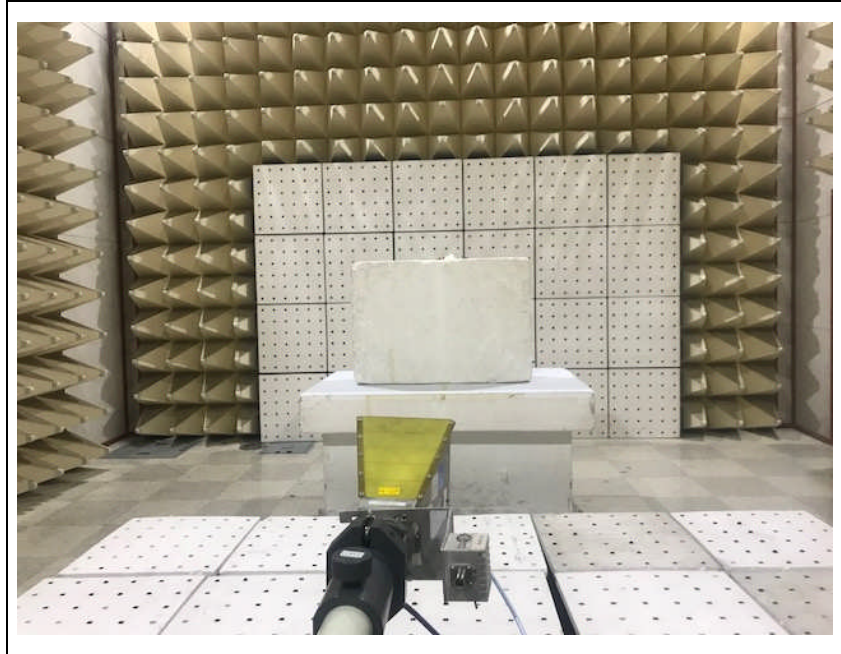
2. Worst case of orthogonal planes each frequency band

- Test setup photos for each mode were reported as representative worst axis after radiated measurements for each position were complete.
- To get a maximum emission level from the EUT, the EUT is manipulated through three orthogonal planes (X, Y, Z). Worst orthogonal plan of EUT is Z – axis during radiation test.

- Photo of Radiated Spurious Emission Test (Below 1 GHz)



- Photo of Radiated Spurious Emission Test (Above 1 GHz)



3. Photos of AC Power line emission test

