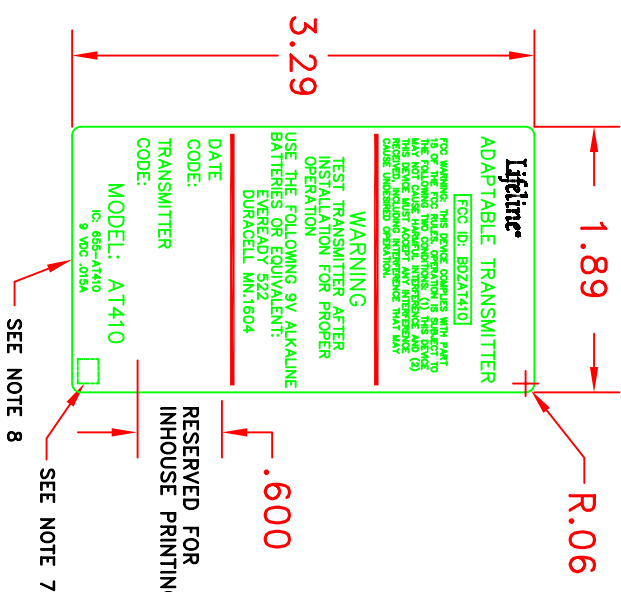


THIS DOCUMENT CONTAINS INFORMATION PROPRIETARY TO LIFELINE SYSTEMS, INC. ANY REPRODUCTION, DISSEMINATION, DISTRIBUTION OR FURTHER RELEASE OF THIS DOCUMENT IS PROHIBITED UNLESS AUTHORIZED IN WRITING BY LIFELINE SYSTEMS, INC.

REVISION HISTORY				
REV	DOCUMENT #	BY	AP	DATE
01	4632	MJ	CD	07/29/04



- NOTES:
1. MATERIAL: .002 thick Polyester Matte finish  
Second Surface printing, write-on overcoat.
  2. COLOR: Blue PMS 293U on white background.
  3. Part to be supplied Die cut to the liner on a 3" core roll.
  4. ADHESIVE: .001 thick permanent adhesive L-23.
  5. TYPEFACE: Palatino, Bold Upper case 10 point;  
Helvetica, Bold Upper case 9, 10 & 11 points;  
Helvetica, Upper case 4, 4.5, 5, 6, 7, 8 points.
  6. All material to be UL & CSA acceptable and marked as such
  7. Place vendor agency approval as noted
  8. Die-cut line do not print this line on label

UNLESS OTHERWISE SPECIFIED DIMENSIONS ARE IN INCHES TOLERANCES ON:		ANGLES	
.XX	N/A	N/A	
.XXX	N/A	N/A	
MACHINE FINISH	N/A	N/A	
REMOVE ALL BURRS AND SHARP EDGES MAX. FLAT .010	DO NOT SCALE PRINT	Scale	N/A
CAGE CODE	OS0W2	SIZE	B
DWG #	0750391	Page	1 of 1
REV	01		

MANUFACTURER	MANUFACTURER PN:
SCREENPRINT/DOW 200 RESEARCH DRIVE WILMINGTON, MA 01887	
<p><b>Lifeline Systems, Inc.</b> 111 LAMBREGE STREET FRAMINGHAM, MASSACHUSETTS 01702-8156</p>	
Created By	Date Created
M. JOHNSON	08/02/04
Title	
LABEL FCC ID AT410	