

RF Exposure Lab

802 N. Twin Oaks Valley Road, Suite 105 • San Marcos, CA 92069 • U.S.A.

TEL (760) 471-2100 • FAX (760) 471-2121

<http://www.rfexposurelab.com>

CERTIFICATE OF COMPLIANCE SAR EVALUATION

Lifeline Systems Inc.
111 Lawrence Street
Framingham, MA 01702

Dates of Test: June 26 - 27, 2013
Test Report Number: SAR.20130606
Revision B

| | |
|----------------------------------|---|
| FCC ID: | BDZ7000MHB |
| IC Certificate: | 655C-7000MHB |
| Model(s): | 7000MHB |
| Test Sample: | Engineering Unit Same as Production |
| S/N Number: | 1030000092 |
| Equipment Type: | Wireless mPERS |
| Classification: | Portable Transmitter Next to Face and Body |
| TX Frequency Range: | 824 – 848 MHz; 1850 – 1910 MHz; 917 – 920 MHz |
| Frequency Tolerance: | ± 2.5 ppm |
| Maximum RF Output: | 850 MHz (GSM) – 32.7 dBm, 850 MHz (WCDMA) – 23.6 dBm, 1900 MHz (GSM) – 29.6 dBm, 1900 MHz (WCDMA) – 23.9 dBm, 900 MHz – <3.23 dBm Conducted |
| Signal Modulation: | WCDMA, GMSK, 8-PSK |
| Antenna Type: | PCB |
| Application Type: | Certification |
| FCC Rule Parts: | Part 2, 22, 24 |
| KDB Test Methodology: | KDB 447498 D01 v05 |
| Max. Face SAR Value: | 0.68 W/kg – 1 gram average – Reported |
| Max. Body SAR Value: | 1.46 W/kg – 1 gram average – Reported |
| Max. Extremity SAR Value: | 1.62 W/kg – 10 gram average – Reported |
| Separation Distance (Face): | 10 mm |
| Separation Distance (Body): | 8 mm |
| Separation Distance (Extremity): | 0 mm |

This wireless mobile and/or portable device has been shown to be compliant for localized specific absorption rate (SAR) for uncontrolled environment/general exposure limits specified in ANSI/IEEE Std. C95.1-1992 and had been tested in accordance with the measurement procedures specified in IEEE 1528-2003, and OET Bulletin 65 Supp. C (See test report).

I attest to the accuracy of the data. All measurements were performed by myself or were made under my supervision and are correct to the best of my knowledge and belief. I assume full responsibility for the completeness of these measurements and vouch for the qualifications of all persons taking them.

RF Exposure Lab, LLC certifies that no party to this application is subject to a denial of Federal benefits that includes FCC benefits pursuant to Section 5301 of the Anti-Drug Abuse Act of 1988, 21 U.S.C. 853(a).



Jay M. Moulton
Vice President



Certificate # 2387.01

Table of Contents

| | | |
|-----|---|----|
| 1. | Introduction | 3 |
| | SAR Definition [5]..... | 4 |
| 2. | SAR Measurement Setup..... | 5 |
| | Robotic System..... | 5 |
| | System Hardware..... | 5 |
| | System Electronics..... | 6 |
| | Probe Measurement System..... | 6 |
| 3. | Probe and Dipole Calibration..... | 11 |
| 4. | Simulating Tissue Specifications | 12 |
| | Head & Body Simulating Mixture Characterization | 12 |
| 5. | ANSI/IEEE C95.1 – 1992 RF Exposure Limits [2]..... | 13 |
| | Uncontrolled Environment | 13 |
| | Controlled Environment..... | 13 |
| 6. | Measurement Uncertainty | 14 |
| 7. | System Validation..... | 15 |
| | Tissue Verification..... | 15 |
| | Test System Verification..... | 15 |
| 8. | SAR Test Data Summary | 16 |
| | Procedures Used To Establish Test Signal | 16 |
| | Device Test Condition | 16 |
| 9. | FCC 3G Measurement Procedures | 18 |
| | 9.1 Procedures Used to Establish RF Signal for SAR..... | 18 |
| | 9.2 SAR Measurement Conditions for WCDMA/HSDPA/HSUPA..... | 18 |
| | 9.3 SAR Measurement Conditions for GSM..... | 19 |
| | SAR Data Summary – Face | 23 |
| | SAR Data Summary – Body | 24 |
| | SAR Data Summary – Extremity | 25 |
| 10. | Test Equipment List..... | 27 |
| 11. | Conclusion | 28 |
| 12. | References..... | 29 |
| | Appendix A – System Validation Plots and Data | 30 |
| | Appendix B – SAR Test Data Plots | 41 |
| | Appendix C – SAR Test Setup Photos | 48 |
| | Appendix D – Probe Calibration Data Sheets..... | 55 |
| | Appendix E – Dipole Calibration Data Sheets | 67 |
| | Appendix F – Phantom Calibration Data Sheets | 84 |

1. Introduction

This measurement report shows compliance of the Lifeline Systems Inc. Model 7000MHB FCC ID: BZD7000MHB with FCC Part 2, 1093, ET Docket 93-62 Rules for mobile and portable devices and IC Certificate: 655C-7000MHB with RSS102 & Safety Code 6. The FCC have adopted the guidelines for evaluating the environmental effects of radio frequency radiation in ET Docket 93-62 on August 6, 1996 to protect the public and workers from the potential hazards of RF emissions due to FCC regulated portable devices. [1], [6]

The test results recorded herein are based on a single type test of Lifeline Systems Inc. Model 7000MHB and therefore apply only to the tested sample.

The test procedures, as described in ANSI C95.1 – 1999 Standard for Safety Levels with Respect to Human Exposure to Radio Frequency Electromagnetic Fields, 3 kHz to 300 GHz [2], ANSI C95.3 – 2002 Recommended Practice for the Measurement of Potentially Hazardous Electromagnetic Fields [3], FCC OET Bulletin 65 Supp. C – 2001 [4], IEEE Std.1528 – 2003 Recommended Practice [5], and Industry Canada Safety Code 6 Limits of Human Exposure to Radiofrequency Electromagnetic Fields in the Frequency Range from 3kHz to 300 GHz were employed.

The following table indicates all the wireless technologies operating in the 7000MHB wireless mPERS. The table also shows the tolerance for the power level for each mode.

| Band | Technology | Class | 3GPP Nominal Power dBm | Calibrated Nominal Power dBm | Tolerance dBm | Lower Tolerance dBm | Upper Tolerance dBm |
|-------------------|-------------|-------|------------------------|------------------------------|---------------|---------------------|---------------------|
| Band 2 – 1900 MHz | WCDMA/HSPA | 3 | 23 | 23 | ±1.0 | 22 | 24 |
| | GSM | 1 | 29.5 | 29.5 | ±1.0 | 28.5 | 30.5 |
| | GPRS 1 Slot | 1 | 29.5 | 29.5 | ±1.0 | 28.5 | 30.5 |
| | GPRS 2 Slot | 1 | 29.5 | 29.5 | ±1.0 | 28.5 | 30.5 |
| | GPRS 3 Slot | 1 | 28.7 | 28.7 | ±1.0 | 27.7 | 29.7 |
| | GPRS 4 Slot | 1 | 27.5 | 27.5 | ±1.0 | 26.5 | 28.5 |
| | EDGE 1 Slot | E2 | 26 | 26 | ±1.0 | 25 | 27 |
| | EDGE 2 Slot | E2 | 26 | 26 | ±1.0 | 25 | 27 |
| | EDGE 3 Slot | E2 | 25.2 | 25.2 | ±1.0 | 24.2 | 26.2 |
| EDGE 4 Slot | E2 | 24 | 24 | ±1.0 | 23 | 25 | |
| Band 5 – 850 MHz | WCDMA/HSPA | 3 | 23 | 23 | ±1.0 | 22 | 24 |
| | GSM | 4 | 32.5 | 32.5 | ±1.0 | 31.5 | 33.5 |
| | GPRS 1 Slot | 4 | 32.5 | 32.5 | ±1.0 | 31.5 | 33.5 |
| | GPRS 2 Slot | 4 | 32.5 | 32.5 | ±1.0 | 31.5 | 33.5 |
| | GPRS 3 Slot | 4 | 31.7 | 31.7 | ±1.0 | 30.7 | 32.7 |
| | GPRS 4 Slot | 4 | 30.5 | 30.5 | ±1.0 | 29.5 | 31.5 |
| | EDGE 1 Slot | E2 | 27 | 27 | ±1.0 | 26 | 28 |
| | EDGE 2 Slot | E2 | 27 | 27 | ±1.0 | 26 | 28 |
| | EDGE 3 Slot | E2 | 26.2 | 26.2 | ±1.0 | 25.2 | 27.2 |
| EDGE 4 Slot | E2 | 25 | 25 | ±1.0 | 24 | 26 | |

SAR Definition [5]

Specific Absorption Rate is defined as the time derivative (rate) of the incremental energy (dW) absorbed by (dissipated in) an incremental mass (dm) contained in a volume element (dV) of a given density (ρ).

$$SAR = \frac{d}{dt} \left(\frac{dW}{dm} \right) = \frac{d}{dt} \left(\frac{dW}{\rho dV} \right)$$

SAR is expressed in units of watts per kilogram (W/kg). SAR can be related to the electric field at a point by

$$SAR = \frac{\sigma |E|^2}{\rho}$$

where:

σ = conductivity of the tissue (S/m)

ρ = mass density of the tissue (kg/m³)

E = rms electric field strength (V/m)

2. SAR Measurement Setup

Robotic System

These measurements are performed using the DASY52 automated dosimetric assessment system. The DASY52 is made by Schmid & Partner Engineering AG (SPEAG) in Zurich, Switzerland and consists of high precision robotics system (Staubli), robot controller, Intel Core2 computer, near-field probe, probe alignment sensor, and the generic twin phantom containing the brain equivalent material. The robot is a six-axis industrial robot performing precise movements to position the probe to the location (points) of maximum electromagnetic field (EMF) (see Fig. 2.1).

System Hardware

A cell controller system contains the power supply, robot controller teach pendant (Joystick), and a remote control used to drive the robot motors. The PC consists of the HP Intel Core2 computer with Windows XP system and SAR Measurement Software DASY52, A/D interface card, monitor, mouse, and keyboard. The Staubli Robot is connected to the cell controller to allow software manipulation of the robot. A data acquisition electronic (DAE) circuit that performs the signal amplification, signal multiplexing, AD-conversion, offset measurements, mechanical surface detection, collision detection, etc. is connected to the Electro-optical coupler (EOC). The EOC performs the conversion from the optical into digital electric signal of the DAE and transfers data to the PC plug-in card.

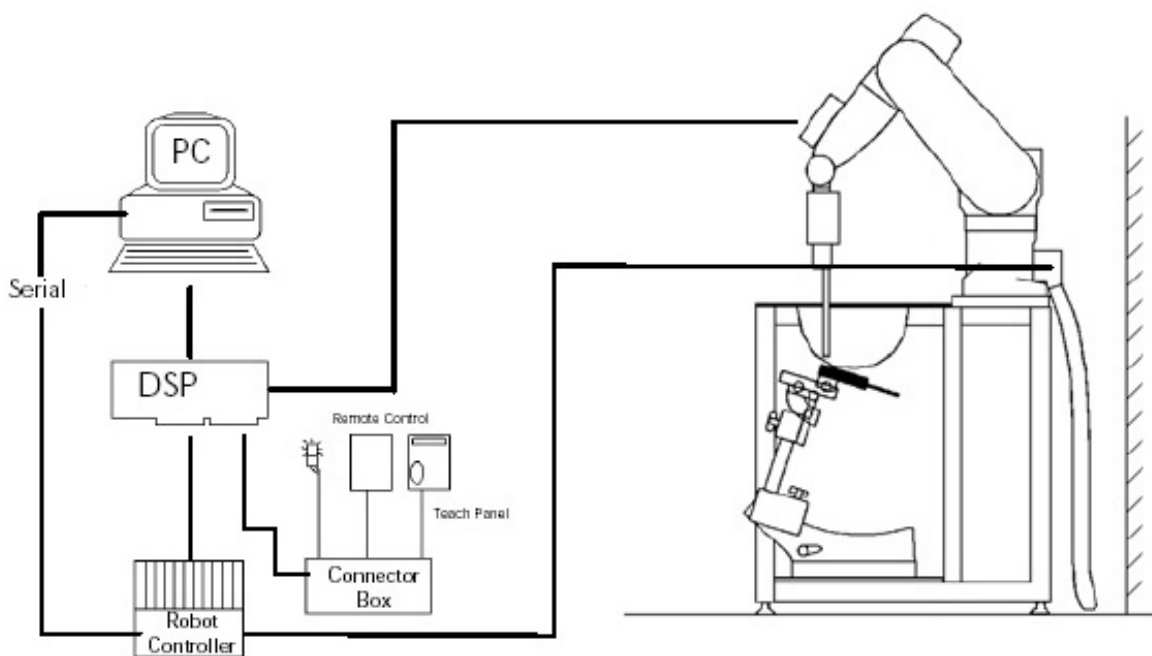


Figure 2.1 SAR Measurement System Setup

System Electronics

The DAE4 consists of a highly sensitive electrometer-grade preamplifier with auto-zeroing, a channel and gain-switching multiplexer, a fast 16 bit AD-converter and a command decoder and control logic unit. Transmission to the PC-card is accomplished through an optical downlink for data and status information and an optical uplink for commands and clock lines. The mechanical probe mounting device includes two different sensor systems for frontal and sidewise probe contacts. They are also used for mechanical surface detection and probe collision detection. The robot uses its own controller with a built in VME-bus computer. The system is described in detail in.

Probe Measurement System

The SAR measurements were conducted with the dosimetric probe EX3DV4, designed in the classical triangular configuration (see Fig. 2.2) and optimized for dosimetric evaluation. The probe is constructed using the thick film technique; with printed resistive lines on ceramic substrates. The probe is equipped with an optical multi fiber line ending at the front of the probe tip. (see Fig. 2.3) It is connected to the EOC box on the robot arm and provides an automatic detection of the phantom surface. Half of the fibers are connected to a pulsed infrared transmitter, the other half to a synchronized receiver. As the probe approaches the surface, the reflection from the surface produces a coupling from the transmitting to the receiving fibers. This reflection increases first during the approach, reaches maximum and then decreases. If the probe is flatly touching the surface, the coupling is zero. The distance of the coupling maximum to the surface is independent of the surface reflectivity and largely independent of the surface to probe angle. The DASY52 software reads the reflection during a software approach and looks for the maximum using a 2nd order fitting. The approach is stopped at reaching the maximum.



DAE System

Probe Specifications

Calibration: In air from 10 MHz to 6.0 GHz
In brain and muscle simulating tissue at Frequencies of 450 MHz, 835 MHz, 1750 MHz, 1900 MHz, 2450 MHz, 2600 MHz, 3500 MHz, 5200 MHz, 5300 MHz, 5600 MHz, 5800 MHz

Frequency: 10 MHz to 6 GHz

Linearity: ± 0.2 dB (30 MHz to 6 GHz)

Dynamic: 10 mW/kg to 100 W/kg

Range: Linearity: ± 0.2 dB

Dimensions: Overall length: 330 mm

Tip length: 20 mm

Body diameter: 12 mm

Tip diameter: 2.5 mm

Distance from probe tip to sensor center: 1 mm

Application: SAR Dosimetry Testing
Compliance tests of wireless device

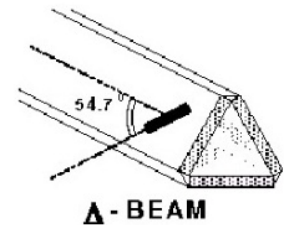


Figure 2.2 Triangular Probe Configurations



Figure 2.3 Probe Thick-Film Technique

Probe Calibration Process

Dosimetric Assessment Procedure

Each probe is calibrated according to a dosimetric assessment procedure described in with accuracy better than +/- 10%. The spherical isotropy was evaluated with the procedure described in and found to be better than +/-0.25dB. The sensitivity parameters (Norm X, Norm Y, Norm Z), the diode compression parameter (DCP) and the conversion factor (Conv F) of the probe is tested.

Free Space Assessment

The free space E-field from amplified probe outputs is determined in a test chamber. This is performed in a TEM cell for frequencies below 1 GHz, and in a waveguide above 1GHz for free space. For the free space calibration, the probe is placed in the volumetric center of the cavity at the proper orientation with the field. The probe is then rotated 360 degrees until the three channels show the maximum reading. The power density readings equates to 1 mW/cm².

Temperature Assessment *

E-field temperature correlation calibration is performed in a flat phantom filled with the appropriate simulated brain tissue. The measured free space E-field in the medium, correlates to temperature rise in a dielectric medium. For temperature correlation calibration a RF transparent thermistor based temperature probe is used in conjunction with the E-field probe

$$SAR = C \frac{\Delta T}{\Delta t}$$

$$SAR = \frac{|E|^2 \cdot \sigma}{\rho}$$

where:

where:

Δt = exposure time (30 seconds),

σ = simulated tissue conductivity,

C = heat capacity of tissue (brain or muscle),

ρ = Tissue density (1.25 g/cm³ for brain tissue)

ΔT = temperature increase due to RF exposure.

SAR is proportional to $\Delta T / \Delta t$, the initial rate of tissue heating, before thermal diffusion takes place.

Now it's possible to quantify the electric field in the simulated tissue by equating the thermally derived SAR to the E- field;

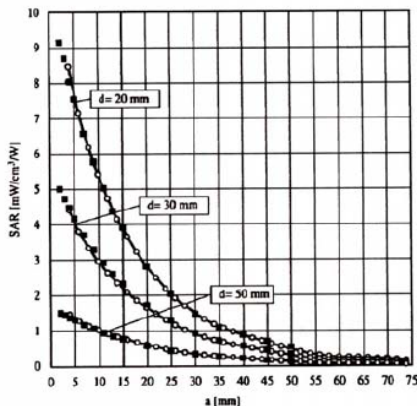


Figure 2.4 E-Field and Temperature Measurements at 900MHz

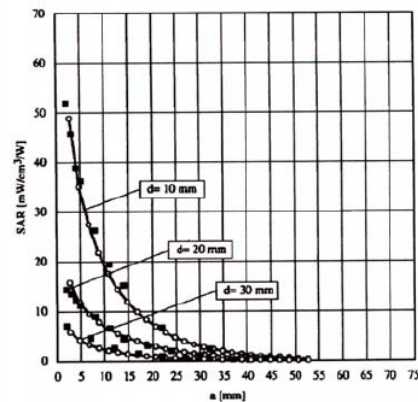


Figure 2.5 E-Field and Temperature Measurements at 1800MHz

Data Extrapolation

The DASY52 software automatically executes the following procedures to calculate the field units from the microvolt readings at the probe connector. The first step of the evaluation is a linearization of the filtered input signal to account for the compression characteristics of the detector diode. The compensation depends on the input signal, the diode type and the DC-transmission factor from the diode to the evaluation electronics. If the exciting field is pulsed, the crest factor of the signal must be known to correctly compensate for peak power. The formula for each channel can be given like below;

$$V_i = U_i + U_i^2 \cdot \frac{cf}{dcp_i}$$

with V_i = compensated signal of channel i (i=x,y,z)
 U_i = input signal of channel i (i=x,y,z)
 cf = crest factor of exciting field (DASY parameter)
 dcp_i = diode compression point (DASY parameter)

From the compensated input signals the primary field data for each channel can be evaluated:

E-field probes:

$$E_i = \sqrt{\frac{V_i}{Norm_i \cdot ConvF}}$$

with V_i = compensated signal of channel i (i = x,y,z)
 $Norm_i$ = sensor sensitivity of channel i (i = x,y,z)
 $\mu V/(V/m)^2$ for E-field probes
 $ConvF$ = sensitivity of enhancement in solution
 E_i = electric field strength of channel i in V/m

The RSS value of the field components gives the total field strength (Hermetian magnitude):

$$E_{tot} = \sqrt{E_x^2 + E_y^2 + E_z^2}$$

The primary field data are used to calculate the derived field units.

$$SAR = E_{tot}^2 \cdot \frac{\sigma}{\rho \cdot 1000}$$

with SAR = local specific absorption rate in W/g
 E_{tot} = total field strength in V/m
 σ = conductivity in [mho/m] or [Siemens/m]
 ρ = equivalent tissue density in g/cm³

The power flow density is calculated assuming the excitation field to be a free space field.

$$P_{free} = \frac{E_{tot}^2}{3770}$$

with P_{pwe} = equivalent power density of a plane wave in W/cm²
 E_{tot} = total electric field strength in V/m

SAM PHANTOM

The SAM Twin Phantom V4.0 is constructed of a fiberglass shell integrated in a wooden table. The shape of the shell is based on data from an anatomical study designed to determine the maximum exposure in at least 90% of all users. It enables the dosimetric evaluation of left and right hand phone usage as well as body mounted usage at the flat phantom region. A cover prevents the evaporation of the liquid. Reference markings on the Phantom allow the complete setup of all predefined phantom positions and measurement grids by manually teaching three points in the robot. (see Fig. 2.6)

Phantom Specification

| | |
|------------------------|-------------------------|
| Phantom: | SAM Twin Phantom (V4.0) |
| Shell Material: | Vivac Composite |
| Thickness: | 2.0 ± 0.2 mm |

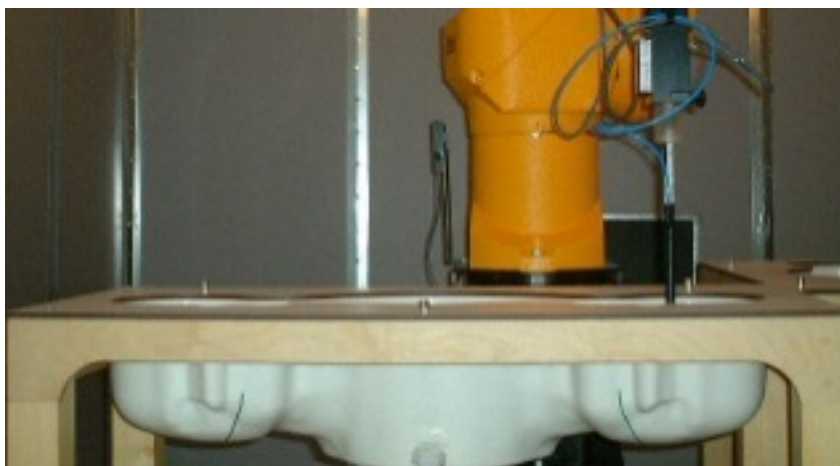


Figure 2.6 SAM Twin Phantom

Device Holder for Transmitters

In combination with the SAM Twin Phantom V4.0 the Mounting Device (see Fig. 2.7), enables the rotation of the mounted transmitter in spherical coordinates whereby the rotation point is the ear opening. The devices can be easily, accurately, and repeatedly positioned according to the FCC, CENELEC, IEC and IEEE specifications. The device holder can be locked at different phantom locations (left head, right head, flat phantom).



Note: A simulating human hand is not used due to the complex anatomical and geometrical structure of the hand that may produce infinite number of configurations. To produce the worst-case condition (the hand absorbs antenna output power), the hand is omitted during the tests.

3. Probe and Dipole Calibration

See Appendix D and E.

4. Simulating Tissue Specifications

Head & Body Simulating Mixture Characterization

The head and body mixtures consist of the material based on the table listed below. The mixture is calibrated to obtain proper dielectric constant (permittivity) and conductivity of the desired tissue. Body tissue parameters that have not been specified in P1528 are derived from the tissue dielectric parameters computed from the 4-Cole-Cole equations.

Table 4.1 Typical Composition of Ingredients for Tissue

| Ingredients | | Simulating Tissue | | | |
|---------------------|--------|-------------------|--------------|---------------|---------------|
| | | 835 MHz Head | 835 MHz Body | 1900 MHz Head | 1900 MHz Body |
| Mixing Percentage | | | | | |
| Water | | 40.92 | 52.40 | 54.88 | 69.91 |
| Sugar | | 56.65 | 45.00 | 0.00 | 0.00 |
| Salt | | 1.49 | 1.40 | 0.21 | 0.13 |
| HEC | | 1.00 | 1.00 | 0.00 | 0.00 |
| Bactericide | | 0.10 | 0.10 | 0.00 | 0.00 |
| DGBE | | 0.00 | 0.00 | 44.91 | 29.96 |
| Dielectric Constant | Target | 41.50 | 55.00 | 40.00 | 53.30 |
| Conductivity (S/m) | Target | 0.97 | 1.05 | 1.40 | 1.52 |

5. ANSI/IEEE C95.1 – 1992 RF Exposure Limits [2]

Uncontrolled Environment

Uncontrolled Environments are defined as locations where there is the exposure of individuals who have no knowledge or control of their exposure. The general population/uncontrolled exposure limits are applicable to situations in which the general public may be exposed or in which persons who are exposed as a consequence of their employment may not be made fully aware of the potential for exposure or cannot exercise control over their exposure. Members of the general public would come under this category when exposure is not employment-related; for example, in the case of a wireless transmitter that exposes persons in its vicinity.

Controlled Environment

Controlled Environments are defined as locations where there is exposure that may be incurred by persons who are aware of the potential for exposure, (i.e. as a result of employment or occupation). In general, occupational/controlled exposure limits are applicable to situations in which persons are exposed as a consequence of their employment, who have been made fully aware of the potential for exposure and can exercise control over their exposure. This exposure category is also applicable when the exposure is of a transient nature due to incidental passage through a location where the exposure levels may be higher than the general population/uncontrolled limits, but the exposed person is fully aware of the potential for exposure and can exercise control over his or her exposure by leaving the area or by some other appropriate means.

Table 5.1 Human Exposure Limits

| | UNCONTROLLED ENVIRONMENT General Population (W/kg) or (mW/g) | CONTROLLED ENVIROMENT Professional Population (W/kg) or (mW/g) |
|--|--|--|
| SPATIAL PEAK SAR ¹ Head | 1.60 | 8.00 |
| SPATIAL AVERAGE SAR ² Whole Body | 0.08 | 0.40 |
| SPATIAL PEAK SAR ³ Hands, Feet, Ankles, Wrists | 4.00 | 20.00 |

¹ The Spatial Peak value of the SAR averaged over any 1 gram of tissue (defined as a tissue volume in the shape of a cube) and over the appropriate averaging time.

² The Spatial Average value of the SAR averaged over the whole body.

³ The Spatial Peak value of the SAR averaged over any 10 grams of tissue (defined as a tissue volume in the shape of a cube) and over the appropriate averaging time.

6. Measurement Uncertainty

Measurement uncertainty table is not required per KDB 865664 D01 v01 section 2.8.2 page 12. SAR measurement uncertainty analysis is required in the SAR report only when the highest measured SAR in a frequency band is ≥ 1.5 W/kg for 1-g SAR. The equivalent ratio (1.5/1.6) should be applied to extremity and occupational exposure conditions. Using the ratio calculation of $(1.5/1.6)*4=3.75$ W/kg, shows that the measurement uncertainty table is not required since no SAR value in this report is above the respective limit.

7. System Validation

Tissue Verification

Table 7.1 Measured Tissue Parameters

| | | | | | | | |
|---------------------------------|------|---------------|----------|---------------|----------|---------------|----------|
| | | 835 MHz Head | | 835 MHz Body | | 1900 MHz Head | |
| Date(s) | | Jun. 27, 2013 | | Jun. 27, 2013 | | Jun. 27, 2013 | |
| Liquid Temperature (°C) | 20.0 | Target | Measured | Target | Measured | Target | Measured |
| Dielectric Constant: ϵ | | 41.50 | 41.33 | 55.20 | 53.06 | 40.00 | 39.35 |
| Conductivity: σ | | 0.905 | 0.935 | 0.97 | 0.99 | 1.40 | 1.45 |
| | | 1900 MHz Body | | | | | |
| Date(s) | | Jun. 26, 2013 | | | | | |
| Liquid Temperature (°C) | 20.0 | Target | Measured | | | | |
| Dielectric Constant: ϵ | | 53.30 | 53.15 | | | | |
| Conductivity: σ | | 1.52 | 1.57 | | | | |

See Appendix A for data printout.

Test System Verification

Prior to assessment, the system is verified to the $\pm 10\%$ of the specifications at the test frequency by using the system kit. Power is normalized to 1 watt. (Graphic Plots Attached)

Table 7.2 System Dipole Validation Target & Measured

| | Test Frequency | Targeted SAR _{1g} (W/kg) | Measure SAR _{1g} (W/kg) | Tissue Used for Verification | Deviation (%) | Plot Number |
|-------------|----------------|-----------------------------------|----------------------------------|------------------------------|---------------|-------------|
| 27-Jun-2013 | 835 MHz | 9.36 | 9.73 | Head | + 3.95 | 1 |
| 27-Jun-2013 | 835 MHz | 9.51 | 10.10 | Body | + 6.20 | 2 |
| 27-Jun-2013 | 1900 MHz | 40.10 | 40.20 | Head | + 0.25 | 3 |
| 26-Jun-2013 | 1900 MHz | 40.20 | 40.90 | Body | + 1.74 | 4 |

See Appendix A for data plots.

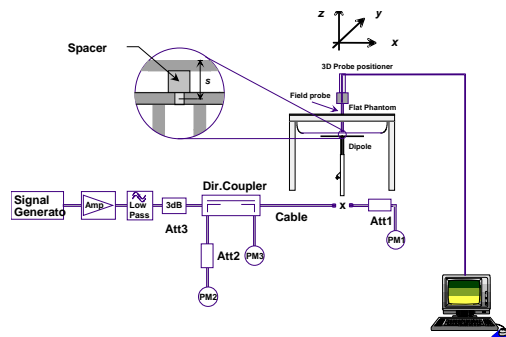


Figure 7.1 Dipole Validation Test Setup

8. SAR Test Data Summary

See Measurement Result Data Pages

See Appendix B for SAR Test Data Plots.
See Appendix C for SAR Test Setup Photos.

Procedures Used To Establish Test Signal

The device was either placed into simulated transmit mode using the manufacturer's test codes or the actual transmission is activated through a base station simulator or similar equipment. See data pages for actual procedure used in measurement.

Device Test Condition

In order to verify that the device was tested at full power, conducted output power measurements were performed before and after each SAR measurement to confirm the output power unless otherwise noted. If a conducted power deviation of more than 5% occurred, the test was repeated. The power drift of each test is measured at the start of the test and again at the end of the test. The drift percentage is calculated by the formula $((\text{end}/\text{start})-1)*100$ and rounded to three decimal places. The drift percentage is calculated into the resultant SAR value on the data sheet for each test.

This device has a 2.4 GHz WiFi module installed in the device. The WiFi module is used for receive only operations. The WiFi sniffs for operational networks for location purposes only. There is also a 900 MHz ISM band hopping transmitter which is excluded from SAR evaluation due to the low power level. The device transmits at less than -3.23 dBm which is below the exclusion value in KDB 447498 D01 v05 section 4.3.1 1) page 10. The calculation is below.

Max power = -3.23 dBm = 0.5 mW
Min. Separation = 5 mm
Frequency = 920 MHz = 0.92 GHz

$(0.5/5)*\sqrt{0.92}=0.1$, The value is well below the 3 required in the KDB.

The testing was conducted for voice communication only as the data communication was excluded due to low duty cycle per KDB 447498 D01 v05 section 6.3 page 20. The device transmits data only once every week when the monitoring station queries the device to insure correct functionality. There is 11 KB of data transmitted to the monitoring station from the body worn device. Using the lowest data rate of the cellular bands (i.e., GSM Class 2 data), the transfer speed is 12 kbits/s which equates to 1.5 kB/s. Calculating the in which the data call will be transmitting is $(11\text{kB})/(1.5 \text{ kB/s}) = 7.33$ seconds per week. Therefore, the data transmission was not evaluated in this report as the duty cycle is extremely low.

The testing was conducted per KDB 447498 D01 v05 page 20. The device was tested in front of the face with a 10 mm gap between the flat surface and the flat phantom using head tissue for in front of face SAR. The device was then tested on the front and back with the lanyard connected maintaining a separation of 8 mm from the body of the device and the flat phantom using body tissue for body SAR. All test reductions are

shown on pages 21. See the photo in Appendix C for a pictorial of the setups and antenna locations.

The device will issue a voice prompt to the user before each incoming and outgoing call is initiated. The voice prompt will instruct the user how to hold the device during the call. The voice prompt will state "Your help call is in progress, please wait. For the best communication, hold your help button in front of you."

The MPERS 7000MHB is designed to be worn as a pendant around the user's neck and is operated by the user pressing a call button and holding the device towards the user's face during an emergency situation. The MPERS 7000MHB is not intended to be held to the ear as it only incorporates a far field speaker.

The device is only capable of making a voice phone call to a pre-configured emergency hotline number. Alternate phone numbers cannot be programmed into the device nor can it receive phone calls from anyone other than the call center.

Due to the expected low usage of the device for voice calls and the guidance by the FCC in a KDB inquiry, the testing was conducted at a distance of 8 mm from the body. In normal usage, the device will be held in the hand near the face for communications. Therefore, the 8 mm distance from the body is very conservative for the use factor. The extremity SAR was conducted on the device with the device at a 0 mm gap distance.

This device is capable of operating in 850/1900 GSM/GPRS/EDGE frequency bands. In GSM/GPRS mode, the device is in Class 4 for 850 MHz and Class 1 for 1900 MHz. In EDGE mode, the device is in Class E2 for 850/1900 MHz.

The WCDMA testing was conducted using 12.2 kbps RMC configured in Test Loop Mode 1. The HSPA testing was conducted with HS-DPCCH, E-DPCCH and E-DPDCH all enabled and a 12.2 kbps RMC. FRC was configured according to HS-DPCCH Sub-Test 1 using H-set 1 and QPSK.

9. FCC 3G Measurement Procedures

Power measurements were performed using a base station simulator under average power.

9.1 Procedures Used to Establish RF Signal for SAR

The device was placed into a simulated call using a base station simulator in a screen room. Such test signals offer a consistent means for testing SAR and recommended for evaluating SAR. The SAR measurement software calculates a reference point at the start and end of the test to check for power drifts. If conducted power deviations of more than 5% occurred, the tests were repeated.

9.2 SAR Measurement Conditions for WCDMA/HSDPA/HSUPA

Configure the call box 8960 to support all WCDMA tests in respect to the 3GPP 34.121 (listed in Table below). Measure the power at Ch4132, 4182 and 4233 for US cell; Ch9262, 9400 and 9538 for US PCS band.

For Rel99

- Set a Test Mode 1 loop back with a 12.2kbps Reference Measurement Channel (RMC).
- Set and send continuously Up power control commands to the device
- Measure the power at the device antenna connector using the power meter with average detector.

For HSDPA Rel 6

- Establish a Test Mode 1 loop back with both 1 12.2kbps RMC channel and a H-Set1 Fixed Reference Channel (FRC). With the 8960 this is accomplished by setting the signal Channel Coding to “Fixed Reference Channel” and configuring for HSET-1 QKSP.
- Set beta values and HSDPA settings for HSDPA Subtest1 according to Table below.
- Send continuously Up power control commands to the device
- Measure the power at the device antenna connector using the power meter with modulated average detector.
- Repeat the measurement for the HSDPA Subtest2, 3 and 4 as given in Table below.

For HSUPA Rel 6

- Use UL RMC 12.2kbps and FRC H-Set1 QPSK, Test Mode 1 loop back. With the 8960 this is accomplished by setting the signal Channel Coding to “E-DCH Test Channel” and configuring the equipment category to Cat5_10ms.
- Set the Absolute Grant for HSUPA Subtest1 according to Table below.
- Set the device power to be at least 5dB lower than the Maximum output power
- Send power control bits to give one TPC_cmd = +1 command to the device. If device doesn't send any E-DPCH data with decreased E-TFCl within 500ms, then repeat this process until the decreased E-TFCl is reported.
- Confirm that the E-TFCl transmitted by the device is equal to the target E-TFCl in Table below. If the E-TFCl transmitted by the device is not equal to the target E-TFCl, then send power control bits to give one TPC_cmd = -1 command to the UE. If UE sends any E-DPCH data with decreased E-TFCl within 500 ms, send new power control bits to give one TPC_cmd = -1 command to the UE. Then confirm that the E-TFCl transmitted by the UE is equal to the target E-TFCl in Table below.
- Measure the power using the power meter with modulated average detector.
- Repeat the measurement for the HSUPA Subtest2, 3, 4 and 5 as given in Table below.

9.3 SAR Measurement Conditions for GSM

Configure the 8960 box to support GMSK and 8PSK call respectively, and set one timeslot and two timeslot transmission for GMSK GSM/GPRS and 8PSK EDGE. Measure and record power outputs for both modulations.

| 3GPP Release Version | Mode | Cellular Band [dBm] | | | Sub-Test (See Table Below) | MPR |
|----------------------|-------|---------------------|------|------|----------------------------|-----|
| | | 4132 | 4183 | 4233 | | |
| 99 | WCDMA | 23.4 | 23.6 | 23.3 | - | - |
| 6 | HSDPA | 23.2 | 23.4 | 23.1 | 1 | 0 |
| 6 | | 23.3 | 23.1 | 23.0 | 2 | 0 |
| 6 | | 22.8 | 22.6 | 22.2 | 3 | 0.5 |
| 6 | | 22.7 | 22.4 | 22.4 | 4 | 0.5 |
| 6 | HSUPA | 23.0 | 23.3 | 23.1 | 1 | 0 |
| 6 | | 21.4 | 21.7 | 21.0 | 2 | 2 |
| 6 | | 22.3 | 22.4 | 22.2 | 3 | 1 |
| 6 | | 21.2 | 21.3 | 20.9 | 4 | 2 |
| 6 | | 23.2 | 23.4 | 23.1 | 5 | 0 |

| 3GPP Release Version | Mode | PCS Band [dBm] | | | Sub-Test (See Table Below) | MPR |
|----------------------|-------|----------------|------|------|----------------------------|-----|
| | | 9262 | 9400 | 9538 | | |
| 99 | WCDMA | 23.7 | 23.9 | 23.8 | - | - |
| 6 | HSDPA | 23.2 | 23.4 | 23.3 | 1 | 0 |
| 6 | | 23.4 | 23.6 | 23.4 | 2 | 0 |
| 6 | | 23.1 | 23.2 | 23.1 | 3 | 0.5 |
| 6 | | 22.8 | 23.3 | 22.9 | 4 | 0.5 |
| 6 | HSUPA | 23.5 | 23.7 | 23.6 | 1 | 0 |
| 6 | | 21.8 | 21.5 | 21.2 | 2 | 2 |
| 6 | | 22.6 | 22.9 | 22.6 | 3 | 1 |
| 6 | | 21.5 | 21.6 | 21.7 | 4 | 2 |
| 6 | | 23.6 | 23.4 | 23.5 | 5 | 0 |

Sub-Test Setup for Release 6 HSDPA

| Sub-Test | β_c | β_d | B_c / β_d | β_{hs} |
|----------|-----------|-----------|-----------------|--------------|
| 1 | 2/15 | 15/15 | 2/15 | 4/15 |
| 2 | 12/15 | 15/15 | 15/15 | 24/15 |
| 3 | 15/15 | 8/15 | 15/8 | 30/15 |
| 4 | 15/15 | 4/15 | 15/4 | 30/15 |

$\Delta_{ack}, \Delta_{nack}$ and $\Delta_{cqi} = 8$

Sub-Test Setup for Release 6 HSUPA

| Sub-Test | β_c | β_d | B_c / β_d | β_{hs} | B_{ec} | B_{ed} | MPR | AG Index | E-TFCI |
|----------|-----------|-----------|-----------------|--------------|----------|----------|-----|----------|--------|
| 1 | 11/15 | 15/15 | 11/15 | 22/15 | 209/225 | 1039/225 | 0.0 | 20 | 75 |
| 2 | 6/15 | 15/15 | 6/15 | 12/15 | 12/15 | 94/75 | 2.0 | 12 | 67 |
| 3 | 15/15 | 9/15 | 15/9 | 30/15 | 30/15 | 47/15 | 1.0 | 15 | 92 |
| 4 | 2/15 | 15/15 | 2/15 | 4/15 | 2/15 | 56/15 | 2.0 | 17 | 71 |
| 5 | 15/15 | 15/15 | 15/15 | 30/15 | 24/15 | 134/15 | 0.0 | 21 | 81 |

$\Delta_{ack}, \Delta_{nack}$ and $\Delta_{cqi} = 8$

| GSM | | | |
|----------|---------|------------|---------------|
| Band | Channel | Peak Power | Frame Average |
| Cellular | 128 | 32.3 | 23.27 |
| | 190 | 32.3 | 23.27 |
| | 251 | 32.3 | 23.27 |
| PCS | 512 | 29.5 | 20.47 |
| | 661 | 29.6 | 20.57 |
| | 810 | 29.4 | 20.37 |

| GPRS-GMSK/1 slot | | | |
|------------------|---------|------------|---------------|
| Band | Channel | Peak Power | Frame Average |
| Cellular | 128 | 32.4 | 23.37 |
| | 190 | 32.3 | 23.27 |
| | 251 | 32.6 | 23.57 |
| PCS | 512 | 29.2 | 20.17 |
| | 661 | 29.4 | 20.37 |
| | 810 | 29.3 | 20.27 |

| GPRS-GMSK/2 slot | | | |
|------------------|---------|------------|---------------|
| Band | Channel | Peak Power | Frame Average |
| Cellular | 128 | 32.5 | 26.48 |
| | 190 | 32.7 | 26.68 |
| | 251 | 32.2 | 26.18 |
| PCS | 512 | 29.2 | 23.18 |
| | 661 | 29.2 | 23.18 |
| | 810 | 29.3 | 23.28 |

| GPRS-GMSK/3 slot | | | |
|------------------|---------|------------|---------------|
| Band | Channel | Peak Power | Frame Average |
| Cellular | 128 | 31.7 | 27.44 |
| | 190 | 31.6 | 27.34 |
| | 251 | 31.7 | 27.44 |
| PCS | 512 | 28.6 | 24.34 |
| | 661 | 28.4 | 24.14 |
| | 810 | 28.5 | 24.24 |

| GPRS-GMSK/4 slot | | | |
|------------------|---------|------------|---------------|
| Band | Channel | Peak Power | Frame Average |
| Cellular | 128 | 30.5 | 27.49 |
| | 190 | 30.4 | 27.39 |
| | 251 | 30.5 | 27.49 |
| PCS | 512 | 27.6 | 24.59 |
| | 661 | 27.5 | 24.49 |
| | 810 | 27.5 | 24.49 |

| EDGE-8PSK/1 slot | | | |
|------------------|---------|------------|---------------|
| Band | Channel | Peak Power | Frame Average |
| Cellular | 128 | 27.2 | 18.17 |
| | 190 | 27.3 | 18.27 |
| | 251 | 27.4 | 18.37 |
| PCS | 512 | 26.5 | 17.47 |
| | 661 | 26.5 | 17.47 |
| | 810 | 26.4 | 17.37 |

| EDGE-8PSK/2 slot | | | |
|------------------|---------|------------|---------------|
| Band | Channel | Peak Power | Frame Average |
| Cellular | 128 | 26.8 | 20.78 |
| | 190 | 26.5 | 20.48 |
| | 251 | 26.7 | 20.68 |
| PCS | 512 | 25.8 | 19.78 |
| | 661 | 25.9 | 19.88 |
| | 810 | 26.0 | 19.98 |

| EDGE-8PSK/3 slot | | | |
|------------------|---------|------------|---------------|
| Band | Channel | Peak Power | Frame Average |
| Cellular | 128 | 26.2 | 21.94 |
| | 190 | 26.3 | 22.04 |
| | 251 | 26.1 | 21.84 |
| PCS | 512 | 25.5 | 21.24 |
| | 661 | 25.4 | 21.14 |
| | 810 | 25.4 | 21.14 |

| EDGE-8PSK/4 slot | | | |
|------------------|---------|------------|---------------|
| Band | Channel | Peak Power | Frame Average |
| Cellular | 128 | 25.2 | 22.19 |
| | 190 | 25.4 | 22.39 |
| | 251 | 25.3 | 22.29 |
| PCS | 512 | 24.3 | 21.29 |
| | 661 | 24.2 | 21.19 |
| | 810 | 24.2 | 21.19 |

Figure 9.3.1 Test Reduction Table – 2G/3G

| Band/ Frequency (MHz) | Technology | Configuration | Required Channel | Tested/ Reduced |
|--------------------------|--------------------------------|-------------------------|----------------------|----------------------|
| Band 5 824-849 MHz | GSM | Face | 128 | Reduced ¹ |
| | | | 190 | Tested |
| | | | 251 | Reduced ¹ |
| | WCDMA | | 4132 | Reduced ¹ |
| | | | 4183 | Tested |
| | | | 4233 | Reduced ¹ |
| | GSM | Body Lanyard (Front) | 128 | Tested |
| | | | 190 | Tested |
| | | | 251 | Tested |
| | WCDMA | | 4132 | Reduced ¹ |
| | | | 4183 | Tested |
| | | | 4233 | Reduced ¹ |
| | GSM | Body Lanyard (Back) | 128 | Tested |
| | | | 190 | Tested |
| | | | 251 | Tested |
| | WCDMA | | 4132 | Reduced ¹ |
| | | | 4183 | Tested |
| | | | 4233 | Reduced ¹ |
| GSM | Extremity Lanyard (Back) | 128 | Reduced ¹ | |
| | | 190 | Tested | |
| | | 251 | Reduced ¹ | |
| WCDMA | | 4132 | Reduced ¹ | |
| | | 4183 | Tested | |
| | | 4233 | Reduced ¹ | |
| Band 2 1850-1910 MHz | GSM | Face | 512 | Reduced ¹ |
| | | | 661 | Tested |
| | | | 810 | Reduced ¹ |
| | WCDMA | | 9262 | Reduced ¹ |
| | | | 9400 | Tested |
| | | | 9538 | Reduced ¹ |
| | GSM | Lanyard (Front) | 512 | Tested |
| | | | 661 | Tested |
| | | | 810 | Tested |
| | WCDMA | | 9262 | Tested |
| | | | 9400 | Tested |
| | | | 9538 | Tested |
| | GSM | Lanyard (Back) | 512 | Tested |
| | | | 661 | Tested |
| | | | 810 | Tested |
| | WCDMA | | 9262 | Tested |
| | | | 9400 | Tested |
| | | | 9538 | Tested |
| GSM | Extremity Lanyard (Back) | 512 | Reduced ¹ | |
| | | 661 | Tested | |
| | | 810 | Reduced ¹ | |
| WCDMA | | 9262 | Reduced ¹ | |
| | | 9400 | Tested | |
| | | 9538 | Reduced ¹ | |

Reduced¹ – When the mid channel is ≤ 0.8 W/kg or 2.0 W/kg, for 1-g or 10-g respectively, when the transmission band is ≤ 100 MHz, the remaining channels are not required per KDB 447498 D01 v05 section 4.3.3 page 13.

SAR Data Summary – Face

| MEASUREMENT RESULTS | | | | | | | | | |
|---------------------|-------|-----------|------|------------|--------------------|------------------|--|---------------------------|------------------------|
| Gap | Plot | Frequency | | Modulation | End Power (dBm) | RMC/ TX Level | Test Set Up/ Multislot Configuration | Measured SAR (W/kg) | Reported SAR (W/kg) |
| | | MHz | Ch. | | | | | | |
| 10 mm | ----- | 836.6 | 4183 | WCDMA | 23.6 | 12.2 kbps | Test Loop 1 | 0.499 | 0.55 |
| | 1 | 1880.0 | 9400 | | 23.9 | 12.2 kbps | Test Loop 1 | 0.575 | 0.59 |
| | 2 | 836.6 | 190 | GMSK | 23.3 | 0 | 1 Slot | 0.514 | 0.68 |
| | ----- | 1880.0 | 661 | | 20.6 | 0 | 1 Slot | 0.274 | 0.34 |

Body
1.6 W/kg (mW/g)
averaged over 1 gram

1. SAR Measurement
 - Phantom Configuration Left Head Eli4 Right Head
 - SAR Configuration Head Body
2. Test Signal Call Mode Test Code Base Station Simulator
3. Test Configuration With Belt Clip Without Belt Clip N/A
4. Tissue Depth is at least 15.0 cm

SAR Data Summary – Body

MEASUREMENT RESULTS

| Gap | Plot | Frequency | | Modulation | Position | End Power | RMC/ TX Level | Test Set Up/ Multislot Configuration | Measured SAR (W/kg) | Reported SAR (W/kg) |
|-------|--------|-----------|-------|--------------------------------|-----------------|-----------|---------------|--------------------------------------|---------------------|---------------------|
| | | MHz | Ch. | | | (dBm) | | | | |
| 8 mm | ----- | 836.6 | 4183 | WCDMA | Lanyard (Front) | 23.6 | 12.2 kbps | Test Loop 1 | 0.715 | 0.78 |
| | ----- | 1852.4 | 9262 | | | 23.7 | 12.2 kbps | Test Loop 1 | 1.18 | 1.26 |
| | ----- | 1880.0 | 9400 | | | 23.9 | 12.2 kbps | Test Loop 1 | 1.17 | 1.20 |
| | ----- | 1907.6 | 9538 | | | 23.8 | 12.2 kbps | Test Loop 1 | 1.14 | 1.19 |
| | ----- | 824.2 | 128 | GMSK | | 23.3 | 0 | 1 Slot | 0.902 | 1.19 |
| | ----- | 836.6 | 190 | | | 23.3 | 0 | 1 Slot | 0.888 | 1.17 |
| | ----- | 848.8 | 251 | | | 23.3 | 0 | 1 Slot | 0.839 | 1.11 |
| | ----- | 1850.2 | 512 | | | 20.5 | 0 | 1 Slot | 0.800 | 1.01 |
| | ----- | 1880.0 | 661 | | | 20.6 | 0 | 1 Slot | 0.833 | 1.02 |
| | ----- | 1909.8 | 810 | | | 20.4 | 0 | 1 Slot | 0.835 | 1.08 |
| | ----- | 836.6 | 4183 | WCDMA | Lanyard (Back) | 23.6 | 12.2 kbps | Test Loop 1 | 0.674 | 0.74 |
| | ----- | 1852.4 | 9262 | | | 23.7 | 12.2 kbps | Test Loop 1 | 1.32 | 1.41 |
| | 3 | 1880.0 | 9400 | | | 23.9 | 12.2 kbps | Test Loop 1 | 1.43 | 1.46 |
| | ----- | 1907.6 | 9538 | | | 23.8 | 12.2 kbps | Test Loop 1 | 1.33 | 1.39 |
| | 4 | 824.2 | 128 | GMSK | | 23.3 | 0 | 1 Slot | 0.946 | 1.25 |
| | ----- | 836.6 | 190 | | | 23.3 | 0 | 1 Slot | 0.925 | 1.22 |
| | ----- | 848.8 | 251 | | | 23.3 | 0 | 1 Slot | 0.840 | 1.11 |
| | ----- | 1850.2 | 512 | | | 20.5 | 0 | 1 Slot | 0.989 | 1.25 |
| | ----- | 1880.0 | 661 | | | 20.6 | 0 | 1 Slot | 0.996 | 1.23 |
| | ----- | 1909.8 | 810 | | | 20.4 | 0 | 1 Slot | 0.833 | 1.07 |
| ----- | 1880.0 | 9400 | WCDMA | Lanyard (Back) with AC Charger | 23.9 | 12.2 kbps | Test Loop 1 | 0.991 | 1.01 | |

Body
1.6 W/kg (mW/g)
 averaged over 1 gram

- SAR Measurement
 Phantom Configuration Left Head Eli4 Right Head
 SAR Configuration Head Body
- Test Signal Call Mode Test Code Base Station Simulator
- Test Configuration With Belt Clip Without Belt Clip N/A
- Tissue Depth is at least 15.0 cm

SAR Data Summary – Extremity

| MEASUREMENT RESULTS | | | | | | | | | | |
|---------------------|------|-----------|------|------------|----------------|-----------|---------------|--------------------------------------|---------------------|---------------------|
| Gap | Plot | Frequency | | Modulation | Position | End Power | RMC/ TX Level | Test Set Up/ Multislot Configuration | Measured SAR (W/kg) | Reported SAR (W/kg) |
| | | MHz | Ch. | | | (dBm) | | | | |
| 0 mm | 5 | 836.6 | 4183 | WCDMA | Lanyard (Back) | 23.6 | 12.2 kbps | Test Loop 1 | 0.652 | 0.72 |
| | 6 | 1880.0 | 9400 | | | 23.9 | 12.2 kbps | Test Loop 1 | 1.58 | 1.62 |
| | ---- | 836.6 | 190 | GMSK | | 23.3 | 0 | 4 Slot | 0.649 | 0.86 |
| | ---- | 1880.0 | 661 | | | 20.6 | 0 | 4 Slot | 0.766 | 0.94 |

Body
4.0 W/kg (mW/g)
 averaged over 10 gram

1. SAR Measurement
 - Phantom Configuration Left Head Eli4 Right Head
 - SAR Configuration Head Body
2. Test Signal Call Mode Test Code Base Station Simulator
3. Test Configuration With Belt Clip Without Belt Clip N/A
4. Tissue Depth is at least 15.0 cm

The calculations for the reported SAR in the preceding three pages of tabulated data was determined using the following formula.

$$\left(\frac{\text{Upper limit of Tolerance for Tx Power (mW)} - \text{Measured Power During Test(mW)}}{\text{Upper limit of Tolerance for Tx Power (mW)}} + 1\right) * (\text{Measured SAR}) = \text{Reported SAR}$$

The equation first calculates the percent increase in power between the measure power and the upper limit of the tune up tolerance. This percentage is multiplied by the measured SAR to scale the measured SAR value to the upper limit of the tolerance. The resultant value is the reported SAR.

The following is an example of one calculation using Body SAR 835 MHz Band Mid Channel Lanyard Front.

Upper limit of Tolerance for Tx Power = 24 dBm = 251.19 mW
Measured Tx Power = 23.6 dBm = 229.09 mW
Measured SAR = 2.11 W/kg

$$\left(\frac{251.19 - 229.09}{251.19} + 1\right) * (0.715) = 0.7779 = 0.78 \text{ Rounded to two digits.}$$

10. Test Equipment List

Table 10.1 Equipment Specifications

| Type | Calibration Due Date | Calibration Done Date | Serial Number |
|--|----------------------|-----------------------|-----------------|
| Staubli Robot TX60L | N/A | N/A | F07/55M6A1/A/01 |
| Measurement Controller CS8c | N/A | N/A | 1012 |
| ELI4 Flat Phantom | N/A | N/A | 1065 |
| Device Holder | N/A | N/A | N/A |
| Data Acquisition Electronics 4 | 08/15/2012 | 08/15/2013 | 759 |
| SAR Software V52.8.2.969 | N/A | N/A | N/A |
| SPEAG E-Field Probe EX3DV4 | 08/20/2013 | 08/20/2012 | 3693 |
| Speag Validation Dipole D835V2 | 12/03/2013 | 12/03/2012 | 4d089 |
| Speag Validation Dipole D1900V2 | 12/06/2013 | 12/06/2012 | 5d116 |
| Agilent N1911A Power Meter | 03/25/2014 | 03/25/2013 | GB45100254 |
| Agilent N1922A Power Sensor | 03/27/2014 | 03/27/2013 | MY45240464 |
| Advantest R3261A Spectrum Analyzer | 03/25/2014 | 03/25/2013 | 31720068 |
| Agilent (HP) 8350B Signal Generator | 03/25/2014 | 03/25/2013 | 2749A10226 |
| Agilent (HP) 83525A RF Plug-In | 03/25/2014 | 03/25/2013 | 2647A01172 |
| Agilent (HP) 8753C Vector Network Analyzer | 03/25/2014 | 03/25/2013 | 3135A01724 |
| Agilent (HP) 85047A S-Parameter Test Set | 03/25/2014 | 03/25/2013 | 2904A00595 |
| Agilent (HP) 8960 Base Station Sim. | 04/05/2014 | 04/05/2012 | MY48360364 |
| Anritsu MT8820C | 08/03/2014 | 08/03/2012 | 6201176199 |
| Aprel Dielectric Probe Assembly | N/A | N/A | 0011 |
| Body Equivalent Matter (835/900 MHz) | N/A | N/A | N/A |
| Head Equivalent Matter (835/900 MHz) | N/A | N/A | N/A |
| Body Equivalent Matter (1800/1900 MHz) | N/A | N/A | N/A |
| Head Equivalent Matter (1800/1900 MHz) | N/A | N/A | N/A |

11. Conclusion

The SAR measurement indicates that the EUT complies with the RF radiation exposure limits of the FCC. These measurements are taken to simulate the RF effects exposure under worst-case conditions. Precise laboratory measures were taken to assure repeatability of the tests. The tested device complies with the requirements in respect to all parameters subject to the test. The test results and statements relate only to the item(s) tested.

Please note that the absorption and distribution of electromagnetic energy in the body is a very complex phenomena that depends on the mass, shape, and size of the body; the orientation of the body with respect to the field vectors; and, the electrical properties of both the body and the environment. Other variables that may play a substantial role in possible biological effects are those that characterize the environment (e.g. ambient temperature, air velocity, relative humidity, and body insulation) and those that characterize the individual (e.g. age, gender, activity level, debilitation, or disease). Because innumerable factors may interact to determine the specific biological outcome of an exposure to electromagnetic fields, any protection guide shall consider maximal amplification of biological effects as a result of field-body interactions, environmental conditions, and physiological variables.

12. References

- [1] Federal Communications Commission, ET Docket 93-62, Guidelines for Evaluating the Environmental Effects of Radio Frequency Radiation, August 1996
- [2] ANSI/IEEE C95.1 – 1992, American National Standard Safety Levels with respect to Human Exposure to Radio Frequency Electromagnetic Fields, 300kHz to 100GHz, New York: IEEE, 1992.
- [3] ANSI/IEEE C95.3 – 1992, IEEE Recommended Practice for the Measurement of Potentially Hazardous Electromagnetic Fields – RF and Microwave, New York: IEEE, 1992.
- [4] Federal Communications Commission, OET Bulletin 65 (Edition 97-01), Supplement C (Edition 01-01), Evaluating Compliance with FCC Guidelines for Human Exposure to Radio Frequency Electromagnetic Fields, June 2001.
- [5] IEEE Standard 1528 – 2003, IEEE Recommended Practice for Determining the Peak-Spatial Average Specific Absorption Rate (SAR) in the Human Head from Wireless Communication Devices: Measurement Techniques, October 2003.
- [6] Industry Canada, RSS – 102e, Radio Frequency Exposure Compliance of Radiocommunication Apparatus (All Frequency Bands), March 2010.
- [7] Health Canada, Safety Code 6, Limits of Human Exposure to Radiofrequency Electromagnetic Fields in the Frequency Range from 3kHz to 300 GHz, 2009.

Appendix A – System Validation Plots and Data

```

*****
Test Result for UIM Dielectric Parameter
Thu 27/Jun/2013
Freq Frequency(GHz)
FCC_eH      FCC OET 65 Supplement C (June 2001) Limits for Head Epsilon
FCC_sH      FCC OET 65 Supplement C (June 2001) Limits for Head Sigma
Test_e      Epsilon of UIM
Test_s      Sigma of UIM
*****
Freq      FCC_eH      FCC_sH      Test_e      Test_s
0.8000    41.68      0.90      41.51      0.91
0.8100    41.63      0.90      41.46      0.92
0.8200    41.58      0.90      41.40      0.92
0.8242    41.56      0.90      41.379     0.924*
0.8264    41.55      0.90      41.368     0.926*
0.8300    41.53      0.90      41.35      0.93
0.8350    41.50      0.905     41.33      0.935*
0.8366    41.50      0.907     41.324     0.937*
0.8400    41.50      0.91      41.31      0.94
0.8466    41.50      0.92      41.290     0.947*
0.8488    41.50      0.92      41.284     0.949*
0.8500    41.50      0.92      41.28      0.95
0.8600    41.50      0.93      41.25      0.96
0.8700    41.50      0.94      41.23      0.98

```

* value interpolated

Test Result for UIM Dielectric Parameter

Thu 27/Jun/2013

Freq Frequency(GHz)

FCC_eH FCC Bulletin 65 Supplement C (June 2001) Limits for Head Epsilon

FCC_sH FCC Bulletin 65 Supplement C (June 2001) Limits for Head Sigma

FCC_eB FCC Limits for Body Epsilon

FCC_sB FCC Limits for Body Sigma

Test_e Epsilon of UIM

Test_s Sigma of UIM

| Freq | FCC_eB | FCC_sB | Test_e | Test_s |
|--------|--------|--------|--------|--------|
| 0.8000 | 55.34 | 0.97 | 53.21 | 0.97 |
| 0.8100 | 55.30 | 0.97 | 53.17 | 0.98 |
| 0.8200 | 55.26 | 0.97 | 53.12 | 0.98 |
| 0.8242 | 55.24 | 0.97 | 53.103 | 0.984* |
| 0.8264 | 55.23 | 0.97 | 53.094 | 0.986* |
| 0.8300 | 55.22 | 0.97 | 53.08 | 0.99 |
| 0.8350 | 55.20 | 0.97 | 53.06 | 0.99* |
| 0.8366 | 55.19 | 0.98 | 53.054 | 0.99* |
| 0.8400 | 55.18 | 0.98 | 53.04 | 0.99 |
| 0.8466 | 55.16 | 0.99 | 53.014 | 0.997* |
| 0.8488 | 55.15 | 0.99 | 53.005 | 0.999* |
| 0.8500 | 55.15 | 0.99 | 53.00 | 1.00 |
| 0.8600 | 55.12 | 1.00 | 52.97 | 1.01 |
| 0.8700 | 55.09 | 1.01 | 52.94 | 1.02 |
| 0.8800 | 55.06 | 1.03 | 52.90 | 1.04 |

* value interpolated

Test Result for UIM Dielectric Parameter

Thu 27/Jun/2013

Freq Frequency(GHz)

FCC_eH FCC Bulletin 65 Supplement C (June 2001) Limits for Head Epsilon

FCC_sH FCC Bulletin 65 Supplement C (June 2001) Limits for Head Sigma

FCC_eB FCC Limits for Body Epsilon

FCC_sB FCC Limits for Body Sigma

Test_e Epsilon of UIM

Test_s Sigma of UIM

| Freq | FCC_eH | FCC_sH | Test_e | Test_s |
|--------|--------|--------|--------|--------|
| 1.8500 | 40.00 | 1.40 | 39.46 | 1.39 |
| 1.8502 | 40.00 | 1.40 | 39.452 | 1.394* |
| 1.8524 | 40.00 | 1.40 | 39.447 | 1.396* |
| 1.8600 | 40.00 | 1.40 | 39.44 | 1.40 |
| 1.8700 | 40.00 | 1.40 | 39.42 | 1.41 |
| 1.8800 | 40.00 | 1.40 | 39.40 | 1.42 |
| 1.8900 | 40.00 | 1.40 | 39.37 | 1.44 |
| 1.9000 | 40.00 | 1.40 | 39.35 | 1.45 |
| 1.9076 | 40.00 | 1.40 | 39.343 | 1.457* |
| 1.9098 | 40.00 | 1.40 | 39.341 | 1.459* |
| 1.9100 | 40.00 | 1.40 | 39.34 | 1.46 |

* value interpolated

Test Result for UIM Dielectric Parameter

Wed 26/Jun/2013

Freq Frequency(GHz)

FCC_eH FCC Bulletin 65 Supplement C (June 2001) Limits for Head Epsilon

FCC_sH FCC Bulletin 65 Supplement C (June 2001) Limits for Head Sigma

FCC_eB FCC Limits for Body Epsilon

FCC_sB FCC Limits for Body Sigma

Test_e Epsilon of UIM

Test_s Sigma of UIM

| Freq | FCC_eB | FCC_sB | Test_e | Test_s |
|--------|--------|--------|--------|--------|
| 1.8500 | 53.30 | 1.52 | 53.26 | 1.51 |
| 1.8502 | 53.30 | 1.52 | 53.252 | 1.514* |
| 1.8524 | 53.30 | 1.52 | 53.247 | 1.516* |
| 1.8600 | 53.30 | 1.52 | 53.24 | 1.52 |
| 1.8700 | 53.30 | 1.52 | 53.22 | 1.53 |
| 1.8800 | 53.30 | 1.52 | 53.19 | 1.54 |
| 1.8900 | 53.30 | 1.52 | 53.17 | 1.56 |
| 1.9000 | 53.30 | 1.52 | 53.15 | 1.57 |
| 1.9076 | 53.30 | 1.52 | 53.13 | 1.577* |
| 1.9098 | 53.30 | 1.52 | 53.124 | 1.579* |
| 1.9100 | 53.30 | 1.52 | 53.12 | 1.58 |

* value interpolated

RF Exposure Lab

Plot 1

DUT: Dipole 835 MHz D835V2; Type: D835V2; Serial: D835V2 - SN:4d089

Communication System: CW; Frequency: 835 MHz; Duty Cycle: 1:1
 Medium: HSL835; Medium parameters used (interpolated): $f = 835$ MHz; $\sigma = 0.935$ S/m; $\epsilon_r = 41.33$; $\rho = 1000$ kg/m³
 Phantom section: Flat Section

Test Date: Date: 6/27/2013; Ambient Temp: 23 °C; Tissue Temp: 21 °C
 Probe: EX3DV4 - SN3693; ConvF(8.55, 8.55, 8.55); Calibrated: 8/20/2012;
 Sensor-Surface: 2mm (Mechanical Surface Detection)
 Electronics: DAE4 Sn759; Calibrated: 8/15/2012
 Phantom: ELI v4.0; Type: QDOVA001BB; Serial: TP:1065
 Measurement SW: DASY52, Version 52.8 (4); SEMCAD X Version 14.6.8 (7028)

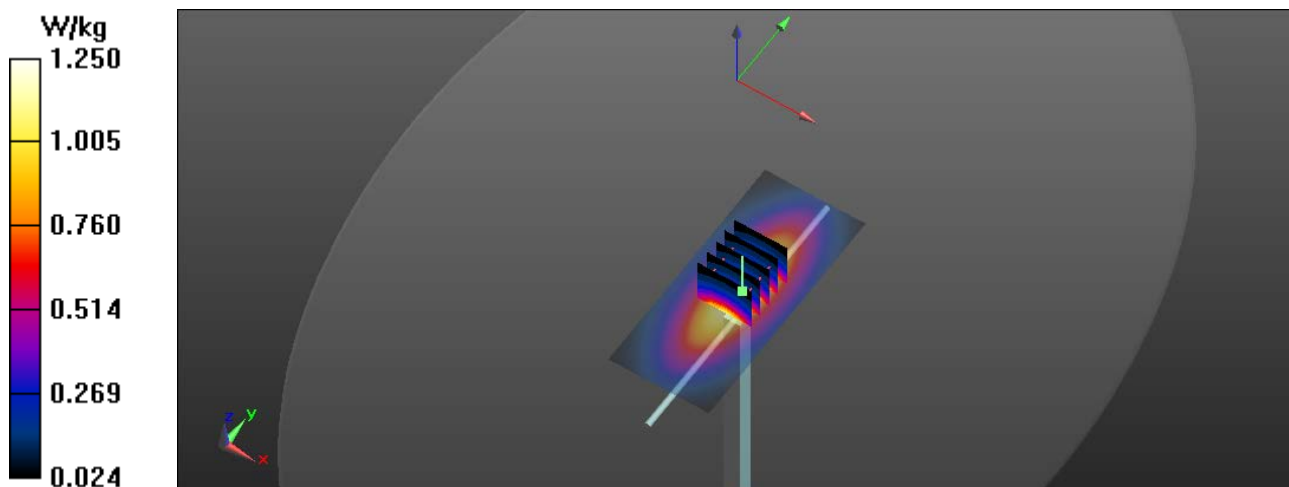
Procedure Notes:

835 MHz Head/Verification/Area Scan (61x141x1): Interpolated grid: dx=1.000 mm, dy=1.000 mm

[Info: Interpolated medium parameters used for SAR evaluation.](#)
 Maximum value of SAR (interpolated) = 1.25 W/kg

835 MHz Head/Verification/Zoom Scan (5x5x7)/Cube 0: Measurement grid: dx=8mm, dy=8mm, dz=5mm
 Reference Value = 34.577 V/m; Power Drift = -0.08 dB
 Peak SAR (extrapolated) = 1.44 W/kg
SAR(1 g) = 0.973 W/kg; SAR(10 g) = 0.636 W/kg

[Info: Interpolated medium parameters used for SAR evaluation.](#)
 Maximum value of SAR (measured) = 1.23 W/kg



RF Exposure Lab

Plot 2

DUT: Dipole 835 MHz D835V2; Type: D835V2; Serial: D835V2 - SN:4d089

Communication System: CW; Frequency: 835 MHz; Duty Cycle: 1:1
 Medium: MSL835; Medium parameters used (interpolated): $f = 835 \text{ MHz}$; $\sigma = 0.99 \text{ S/m}$; $\epsilon_r = 53.06$; $\rho = 1000 \text{ kg/m}^3$
 Phantom section: Flat Section

Test Date: Date: 6/26/2013; Ambient Temp: 23 °C; Tissue Temp: 21 °C
 Probe: EX3DV4 - SN3693; ConvF(8.87, 8.87, 8.87); Calibrated: 8/20/2012;
 Sensor-Surface: 2mm (Mechanical Surface Detection)
 Electronics: DAE4 Sn759; Calibrated: 8/15/2012
 Phantom: ELI v4.0; Type: QDOVA001BB; Serial: TP:1065
 Measurement SW: DASY52, Version 52.8 (4); SEMCAD X Version 14.6.8 (7028)

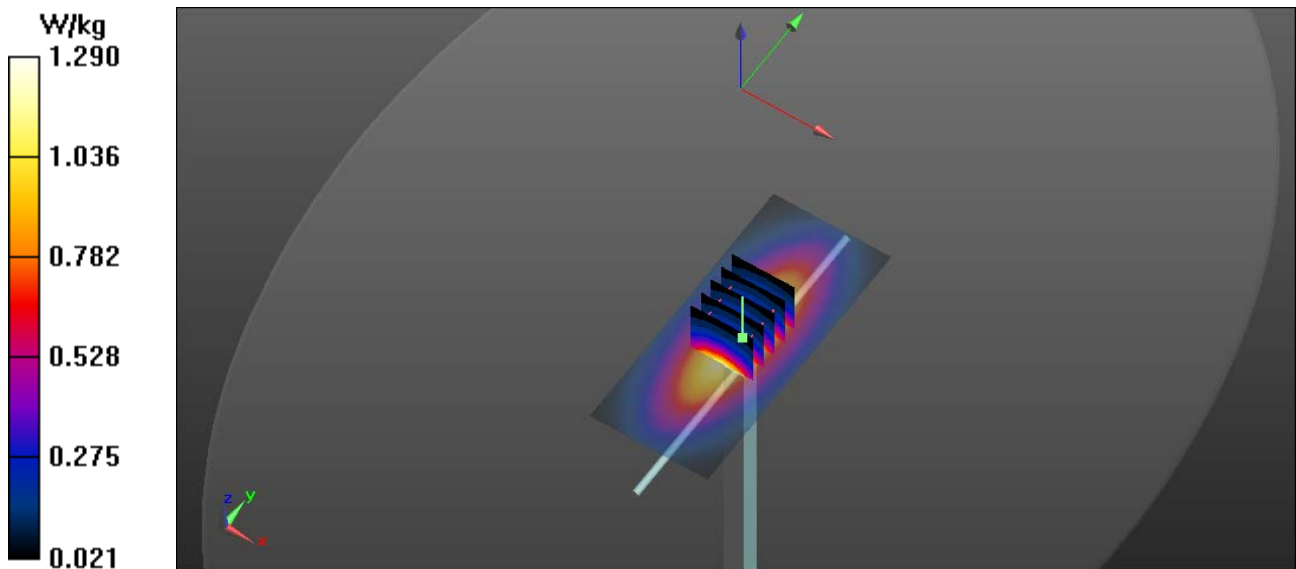
Procedure Notes:

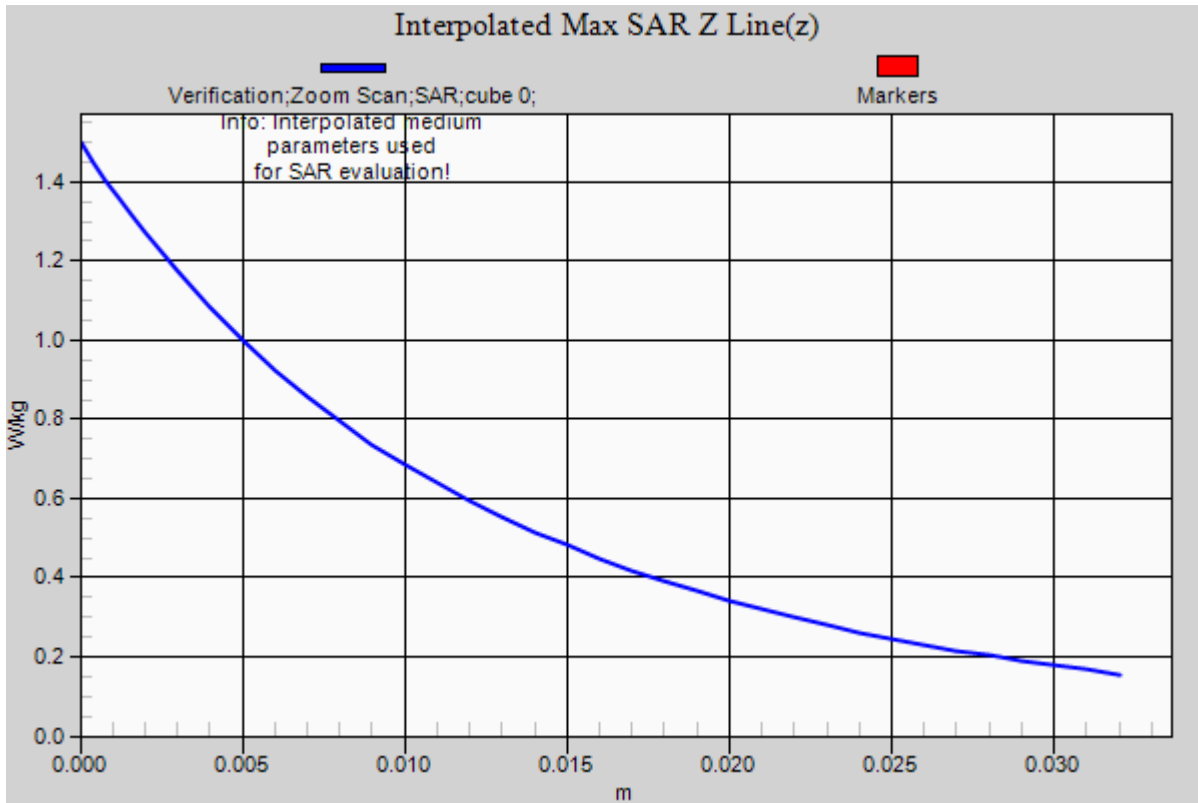
835 MHz Body/Verification/Area Scan (61x141x1): Interpolated grid: $dx=1.000 \text{ mm}$, $dy=1.000 \text{ mm}$

Info: [Interpolated medium parameters used for SAR evaluation.](#)
 Maximum value of SAR (interpolated) = 1.29 W/kg

835 MHz Body/Verification/Zoom Scan (5x5x7)/Cube 0: Measurement grid: $dx=8\text{mm}$, $dy=8\text{mm}$, $dz=5\text{mm}$
 Reference Value = 53.924 V/m; Power Drift = 0.01 dB
 Peak SAR (extrapolated) = 1.50 W/kg
SAR(1 g) = 1.01 W/kg; SAR(10 g) = 0.662 W/kg

Info: [Interpolated medium parameters used for SAR evaluation.](#)
 Maximum value of SAR (measured) = 1.28 W/kg





RF Exposure Lab

Plot 3

DUT: Dipole 1900 MHz D1900V2; Type: D1900V2; Serial: D1900V2 - SN:5d116

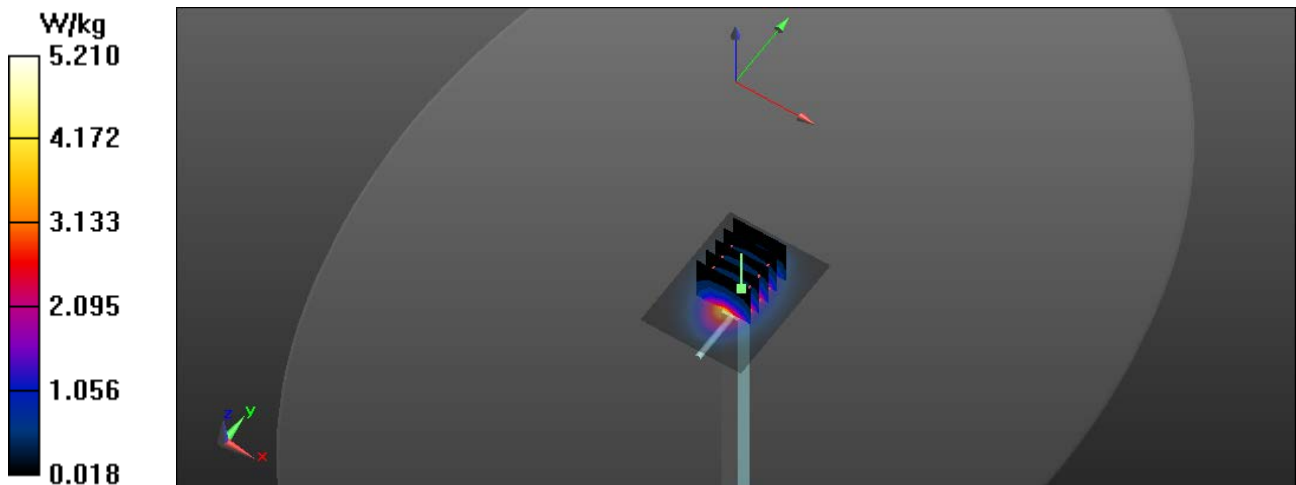
Communication System: CW; Frequency: 1900 MHz; Duty Cycle: 1:1
 Medium: HSL1900; Medium parameters used: $f = 1900 \text{ MHz}$; $\sigma = 1.45 \text{ S/m}$; $\epsilon_r = 39.35$; $\rho = 1000 \text{ kg/m}^3$
 Phantom section: Flat Section

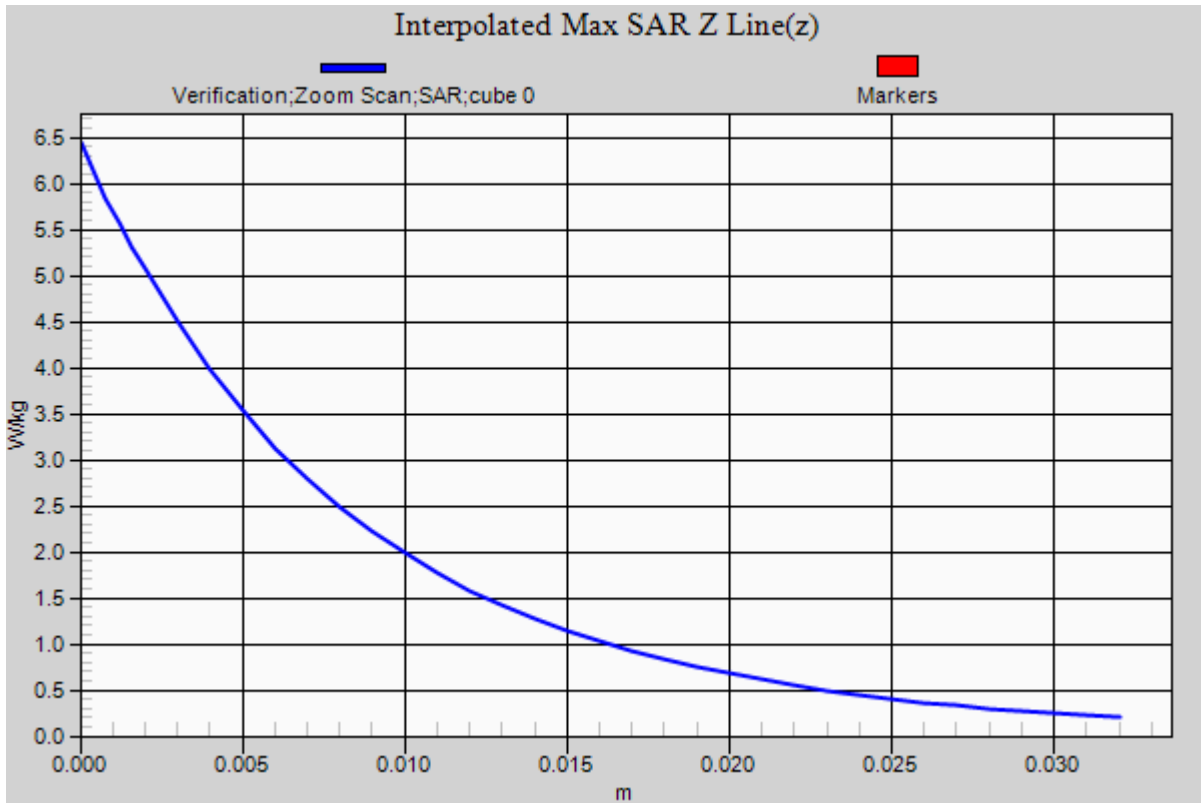
Test Date: Date: 6/27/2013; Ambient Temp: 23 °C; Tissue Temp: 21 °C
 Probe: EX3DV4 - SN3693; ConvF(7.67, 7.67, 7.67); Calibrated: 8/20/2012;
 Sensor-Surface: 2mm (Mechanical Surface Detection)
 Electronics: DAE4 Sn759; Calibrated: 8/15/2012
 Phantom: ELI v4.0; Type: QDOVA001BB; Serial: TP:1065
 Measurement SW: DASY52, Version 52.8 (4); SEMCAD X Version 14.6.8 (7028)

Procedure Notes:

1900 MHz Head/Verification/Area Scan (61x81x1): Interpolated grid: $dx=1.000 \text{ mm}$, $dy=1.000 \text{ mm}$
 Maximum value of SAR (interpolated) = 5.21 W/kg

1900 MHz Head/Verification/Zoom Scan (5x5x7)/Cube 0: Measurement grid: $dx=8\text{mm}$, $dy=8\text{mm}$, $dz=5\text{mm}$
 Reference Value = 53.708 V/m; Power Drift = 0.01 dB
 Peak SAR (extrapolated) = 6.44 W/kg
SAR(1 g) = 4.02 W/kg; SAR(10 g) = 2.09 W/kg
 Maximum value of SAR (measured) = 5.04 W/kg





RF Exposure Lab

Plot 4

DUT: Dipole 1900 MHz D1900V2; Type: D1900V2; Serial: D1900V2 - SN:5d116

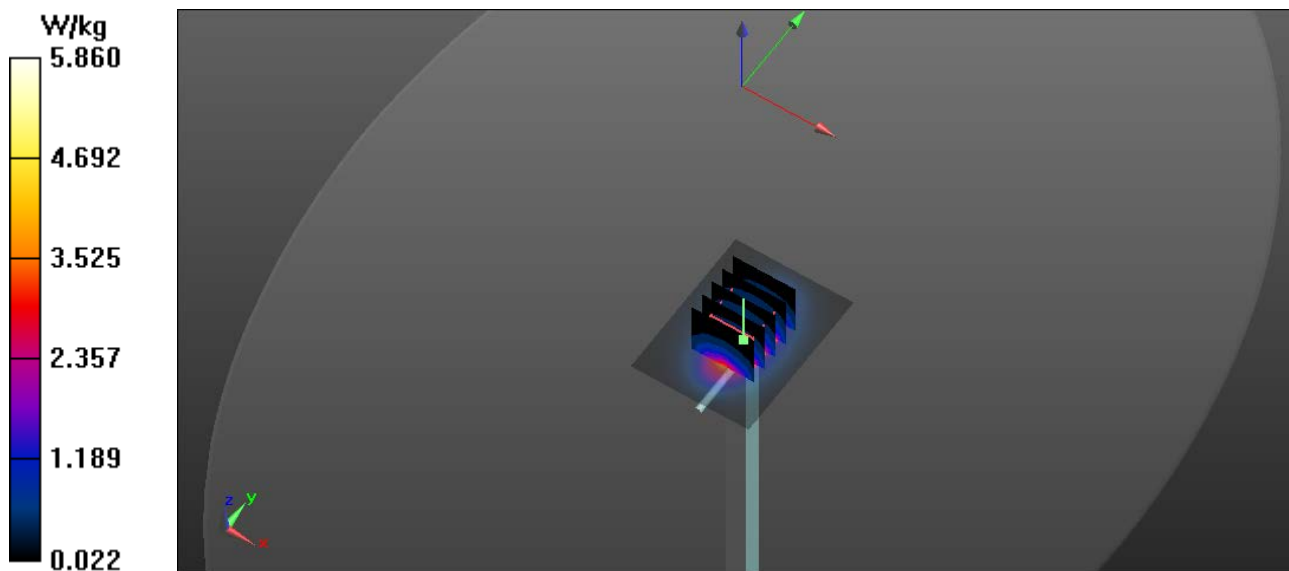
Communication System: CW; Frequency: 1900 MHz; Duty Cycle: 1:1
 Medium: MSL1900; Medium parameters used: $f = 1900 \text{ MHz}$; $\sigma = 1.57 \text{ S/m}$; $\epsilon_r = 53.15$; $\rho = 1000 \text{ kg/m}^3$
 Phantom section: Flat Section

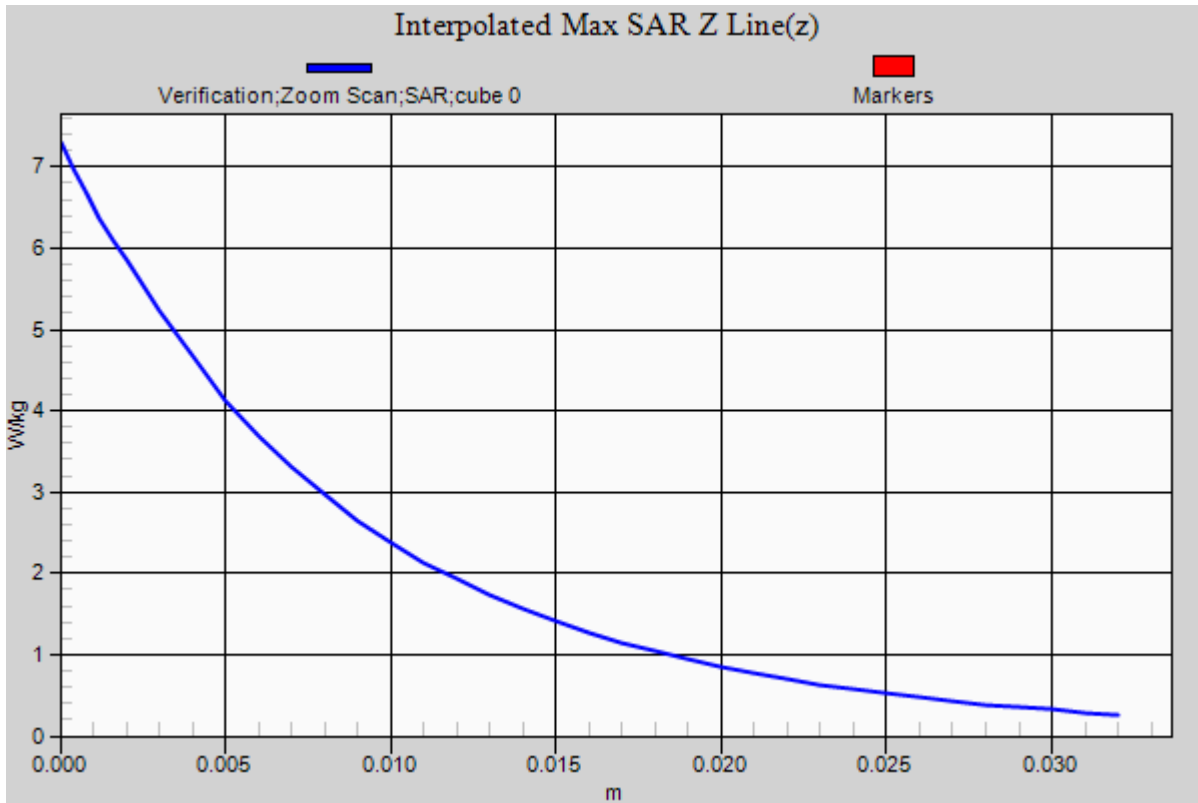
Test Date: Date: 6/26/2013; Ambient Temp: 23 °C; Tissue Temp: 21 °C
 Probe: EX3DV4 - SN3693; ConvF(7.13, 7.13, 7.13); Calibrated: 8/20/2012;
 Sensor-Surface: 2mm (Mechanical Surface Detection)
 Electronics: DAE4 Sn759; Calibrated: 8/15/2012
 Phantom: ELI v4.0; Type: QDOVA001BB; Serial: TP:1065
 Measurement SW: DASY52, Version 52.8 (4); SEMCAD X Version 14.6.8 (7028)

Procedure Notes:

1900 MHz Body/Verification/Area Scan (61x81x1): Interpolated grid: $dx=1.000 \text{ mm}$, $dy=1.000 \text{ mm}$
 Maximum value of SAR (interpolated) = 5.86 W/kg

1900 MHz Body/Verification/Zoom Scan (5x5x7)/Cube 0: Measurement grid: $dx=8\text{mm}$, $dy=8\text{mm}$, $dz=5\text{mm}$
 Reference Value = 53.924 V/m; Power Drift = 0.01 dB
 Peak SAR (extrapolated) = 7.30 W/kg
SAR(1 g) = 4.09 W/kg; SAR(10 g) = 2.15 W/kg
 Maximum value of SAR (measured) = 5.82 W/kg





Appendix B – SAR Test Data Plots

RF Exposure Lab

Plot 1

DUT: 7000MHB; Type: Wireless mPEMS; Serial: 1030000091

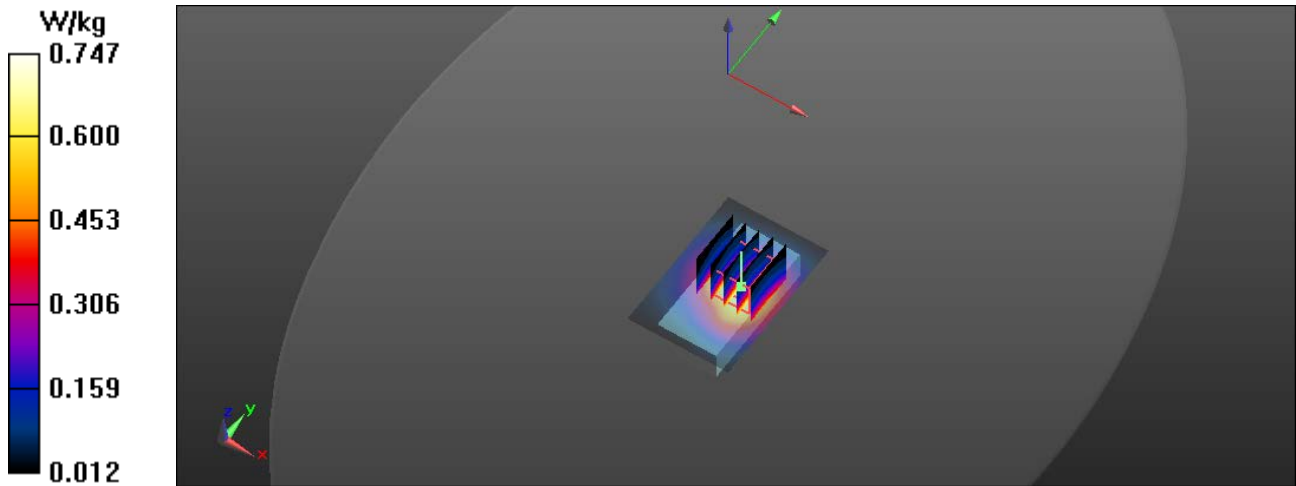
Communication System: UMTS (WCDMA); Frequency: 1880 MHz; Duty Cycle: 1:1
Medium: HSL1900; Medium parameters used: $f = 1880$ MHz; $\sigma = 1.42$ S/m; $\epsilon_r = 39.40$; $\rho = 1000$ kg/m³
Phantom section: Flat Section

Test Date: Date: 6/27/2013; Ambient Temp: 23 °C; Tissue Temp: 21 °C
Probe: EX3DV4 - SN3693; ConvF(7.67, 7.67, 7.67); Calibrated: 8/20/2012;
Sensor-Surface: 2mm (Mechanical Surface Detection)
Electronics: DAE4 Sn759; Calibrated: 8/15/2012
Phantom: ELI v4.0; Type: QDOVA001BB; Serial: TP:1065
Measurement SW: DASY52, Version 52.8 (4); SEMCAD X Version 14.6.8 (7028)

Procedure Notes:

1900 MHz Face/Front WCDMA Mid/Area Scan (41x61x1): Interpolated grid: dx=1.500 mm, dy=1.500 mm
Maximum value of SAR (interpolated) = 0.747 W/kg

1900 MHz Face/Front WCDMA Mid/Zoom Scan (5x5x7)/Cube 0: Measurement grid: dx=8mm, dy=8mm, dz=5mm
Reference Value = 20.265 V/m; Power Drift = -0.02 dB
Peak SAR (extrapolated) = 0.883 W/kg
SAR(1 g) = 0.575 W/kg; SAR(10 g) = 0.356 W/kg
Maximum value of SAR (measured) = 0.738 W/kg



RF Exposure Lab

Plot 2

DUT: 7000MHB; Type: Wireless mPEMS; Serial: 1030000091

Communication System: GSM (GMSK); Frequency: 836.6 MHz; Duty Cycle: 1:8.30042
 Medium: HSL835; Medium parameters used (interpolated): $f = 836.6$ MHz; $\sigma = 0.937$ S/m; $\epsilon_r = 41.324$; $\rho = 1000$ kg/m³
 Phantom section: Flat Section

Test Date: Date: 6/27/2013; Ambient Temp: 23 °C; Tissue Temp: 21 °C
 Probe: EX3DV4 - SN3693; ConvF(8.55, 8.55, 8.55); Calibrated: 8/20/2012;
 Sensor-Surface: 2mm (Mechanical Surface Detection)
 Electronics: DAE4 Sn759; Calibrated: 8/15/2012
 Phantom: ELI v4.0; Type: QDOVA001BB; Serial: TP:1065
 Measurement SW: DASYS2, Version 52.8 (4); SEMCAD X Version 14.6.8 (7028)

Procedure Notes:

835 MHz Face/Front GSM Mid/Area Scan (41x61x1): Interpolated grid: dx=1.500 mm, dy=1.500 mm

[Info: Interpolated medium parameters used for SAR evaluation.](#)

Maximum value of SAR (interpolated) = 0.619 W/kg

835 MHz Face/Front GSM Mid/Zoom Scan (5x5x7)/Cube 0: Measurement grid: dx=8mm, dy=8mm, dz=5mm

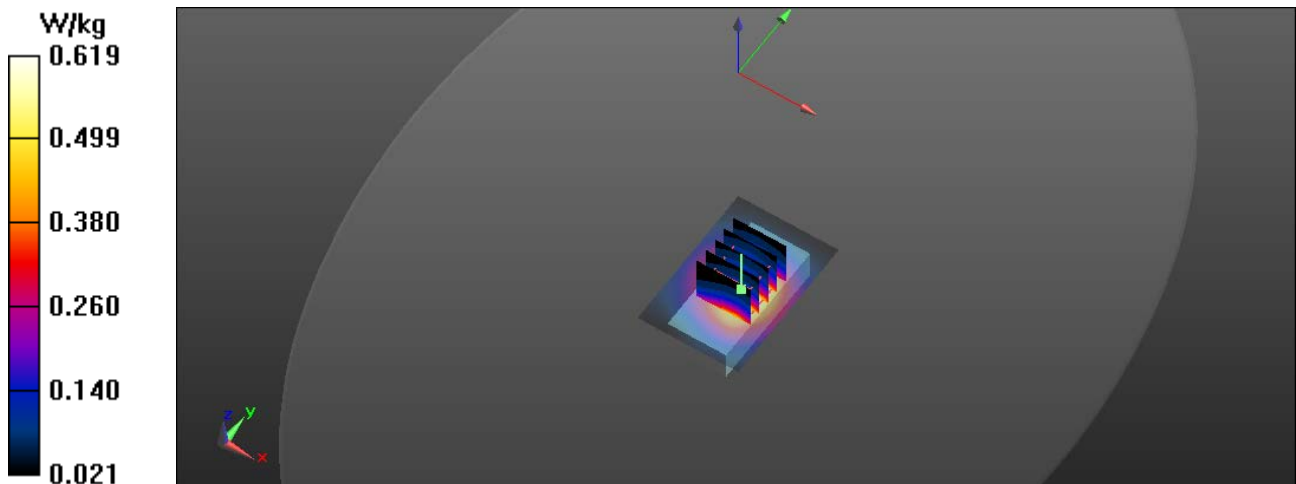
Reference Value = 21.099 V/m; Power Drift = -0.02 dB

Peak SAR (extrapolated) = 0.682 W/kg

SAR(1 g) = 0.514 W/kg; SAR(10 g) = 0.364 W/kg

[Info: Interpolated medium parameters used for SAR evaluation.](#)

Maximum value of SAR (measured) = 0.611 W/kg



RF Exposure Lab

Plot 3

DUT: 7000MHB; Type: Wireless mPEMS; Serial: 1030000091

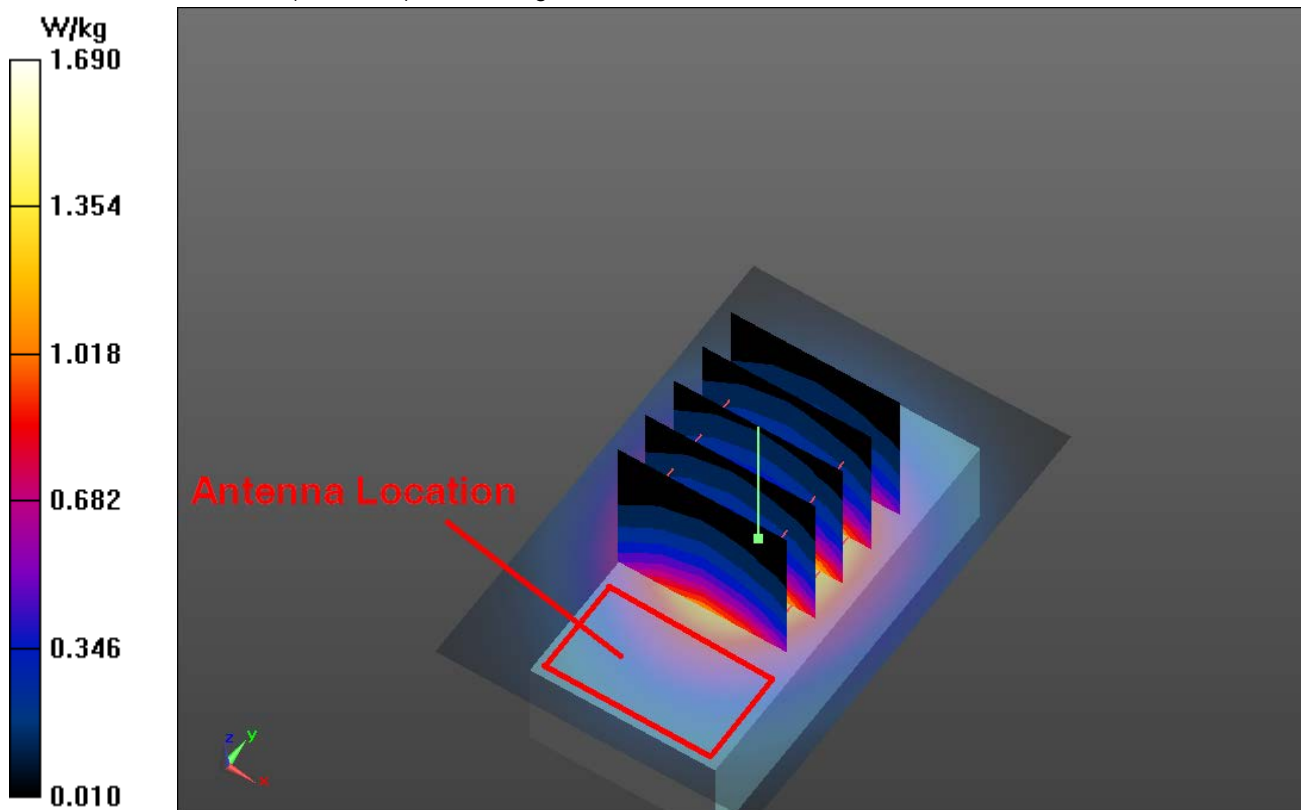
Communication System: UMTS (WCDMA); Frequency: 1880 MHz; Duty Cycle: 1:1
 Medium: MSL1900; Medium parameters used: $f = 1880$ MHz; $\sigma = 1.54$ S/m; $\epsilon_r = 53.19$; $\rho = 1000$ kg/m³
 Phantom section: Flat Section

Test Date: Date: 6/26/2013; Ambient Temp: 23 °C; Tissue Temp: 21 °C
 Probe: EX3DV4 - SN3693; ConvF(7.13, 7.13, 7.13); Calibrated: 8/20/2012;
 Sensor-Surface: 2mm (Mechanical Surface Detection)
 Electronics: DAE4 Sn759; Calibrated: 8/15/2012
 Phantom: ELI v4.0; Type: QDOVA001BB; Serial: TP:1065
 Measurement SW: DASY52, Version 52.8 (4); SEMCAD X Version 14.6.8 (7028)

Procedure Notes:

1900 MHz Body/Back WCDMA Mid/Area Scan (41x61x1): Interpolated grid: dx=1.500 mm, dy=1.500 mm
 Maximum value of SAR (interpolated) = 1.69 W/kg

1900 MHz/Back WCDMA Mid/Zoom Scan (5x5x7)/Cube 0: Measurement grid: dx=8mm, dy=8mm, dz=5mm
 Reference Value = 30.645 V/m; Power Drift = 0.03 dB
 Peak SAR (extrapolated) = 2.02 W/kg
SAR(1 g) = 1.43 W/kg; SAR(10 g) = 0.859 W/kg
 Maximum value of SAR (measured) = 1.70 W/kg



RF Exposure Lab

Plot 4

DUT: 7000MHB; Type: Wireless mPEMS; Serial: 1030000091

Communication System: GSM (GMSK); Frequency: 824.2 MHz; Duty Cycle: 1:8.30042
 Medium: MSL835; Medium parameters used (interpolated): $f = 824.2$ MHz; $\sigma = 0.984$ S/m; $\epsilon_r = 53.103$; $\rho = 1000$ kg/m³
 Phantom section: Flat Section

Test Date: Date: 6/26/2013; Ambient Temp: 23 °C; Tissue Temp: 21 °C
 Probe: EX3DV4 - SN3693; ConvF(8.87, 8.87, 8.87); Calibrated: 8/20/2012;
 Sensor-Surface: 2mm (Mechanical Surface Detection)
 Electronics: DAE4 Sn759; Calibrated: 8/15/2012
 Phantom: ELI v4.0; Type: QDOVA001BB; Serial: TP:1065
 Measurement SW: DASY52, Version 52.8 (4); SEMCAD X Version 14.6.8 (7028)

Procedure Notes:

835 MHz Body/Back GPRS Low/Area Scan (41x61x1): Interpolated grid: dx=1.500 mm, dy=1.500 mm

[Info: Interpolated medium parameters used for SAR evaluation.](#)

Maximum value of SAR (interpolated) = 1.14 W/kg

835 MHz/Back GPRS Low/Zoom Scan (5x5x7)/Cube 0: Measurement grid: dx=8mm, dy=8mm, dz=5mm

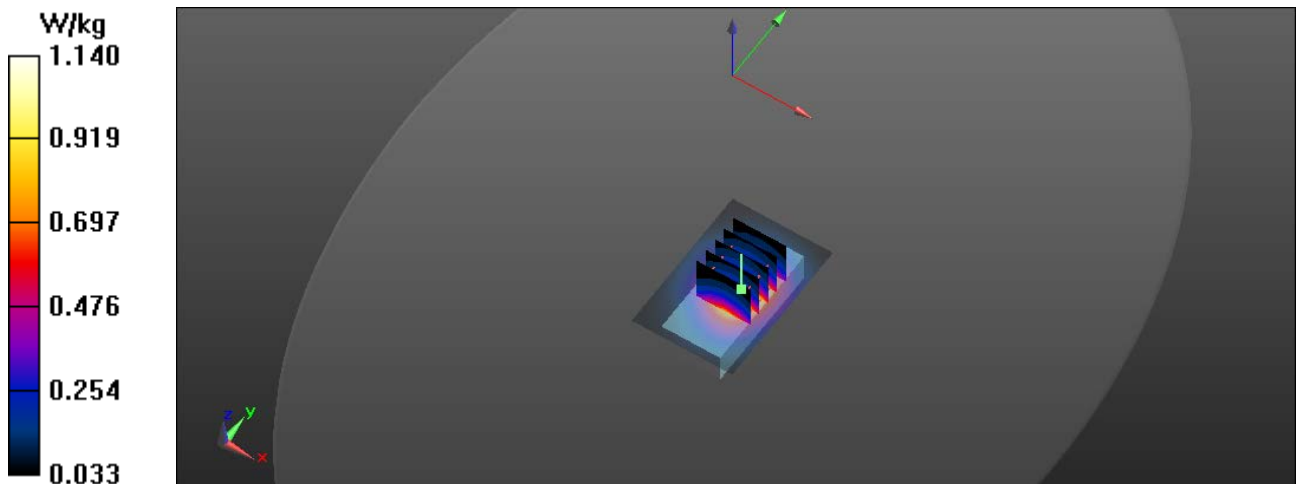
Reference Value = 26.494 V/m; Power Drift = 0.08 dB

Peak SAR (extrapolated) = 1.32 W/kg

SAR(1 g) = 0.946 W/kg; SAR(10 g) = 0.678 W/kg

[Info: Interpolated medium parameters used for SAR evaluation.](#)

Maximum value of SAR (measured) = 1.15 W/kg



RF Exposure Lab

Plot 5

DUT: 7000MHB; Type: Wireless mPEMS; Serial: 1030000091

Communication System: UMTS (WCDMA); Frequency: 836.6 MHz; Duty Cycle: 1:1
 Medium: MSL835; Medium parameters used (interpolated): $f = 836.6 \text{ MHz}$; $\sigma = 0.99 \text{ S/m}$; $\epsilon_r = 53.054$; $\rho = 1000 \text{ kg/m}^3$
 Phantom section: Flat Section

Test Date: Date: 6/27/2013; Ambient Temp: 23 °C; Tissue Temp: 21 °C
 Probe: EX3DV4 - SN3693; ConvF(8.87, 8.87, 8.87); Calibrated: 8/20/2012;
 Sensor-Surface: 2mm (Mechanical Surface Detection)
 Electronics: DAE4 Sn759; Calibrated: 8/15/2012
 Phantom: ELI v4.0; Type: QDOVA001BB; Serial: TP:1065
 Measurement SW: DASY52, Version 52.8 (4); SEMCAD X Version 14.6.8 (7028)

Procedure Notes:

835 MHz Extremity/Back WCDMA Mid/Area Scan (41x61x1): Interpolated grid: $dx=1.500 \text{ mm}$, $dy=1.500 \text{ mm}$

[Info: Interpolated medium parameters used for SAR evaluation.](#)

Maximum value of SAR (interpolated) = 1.72 W/kg

835 MHz Extremity/Back WCDMA Mid/Zoom Scan (6x6x7)/Cube 0: Measurement grid: $dx=8\text{mm}$, $dy=8\text{mm}$, $dz=5\text{mm}$

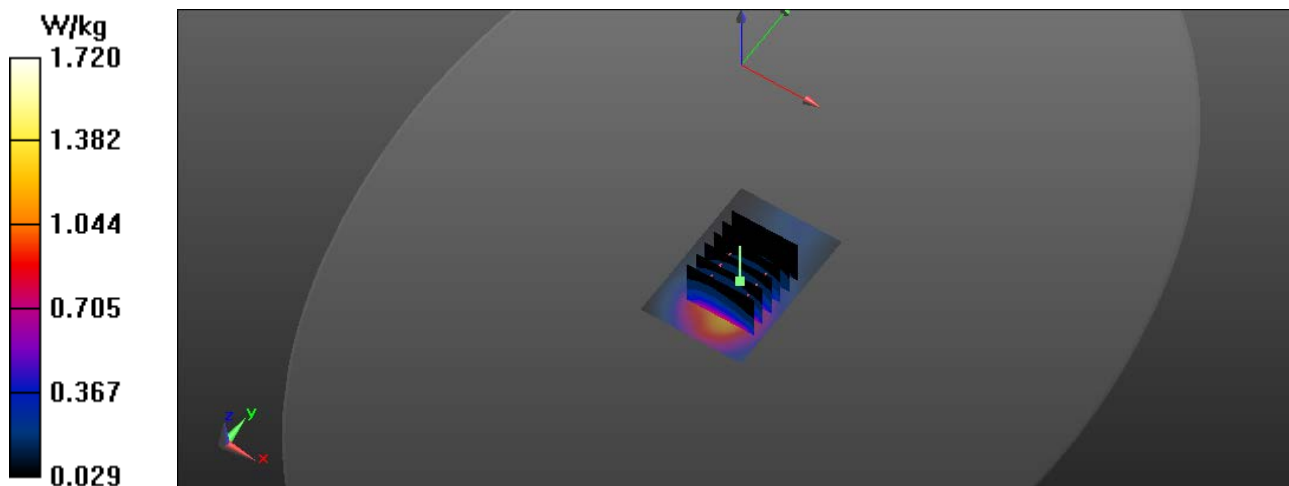
Reference Value = 30.820 V/m; Power Drift = 0.07 dB

Peak SAR (extrapolated) = 2.79 W/kg

SAR(1 g) = 1.12 W/kg; SAR(10 g) = 0.652 W/kg

[Info: Interpolated medium parameters used for SAR evaluation.](#)

Maximum value of SAR (measured) = 2.22 W/kg



RF Exposure Lab

Plot 6

DUT: 7000MHB; Type: Wireless mPEMS; Serial: 1030000091

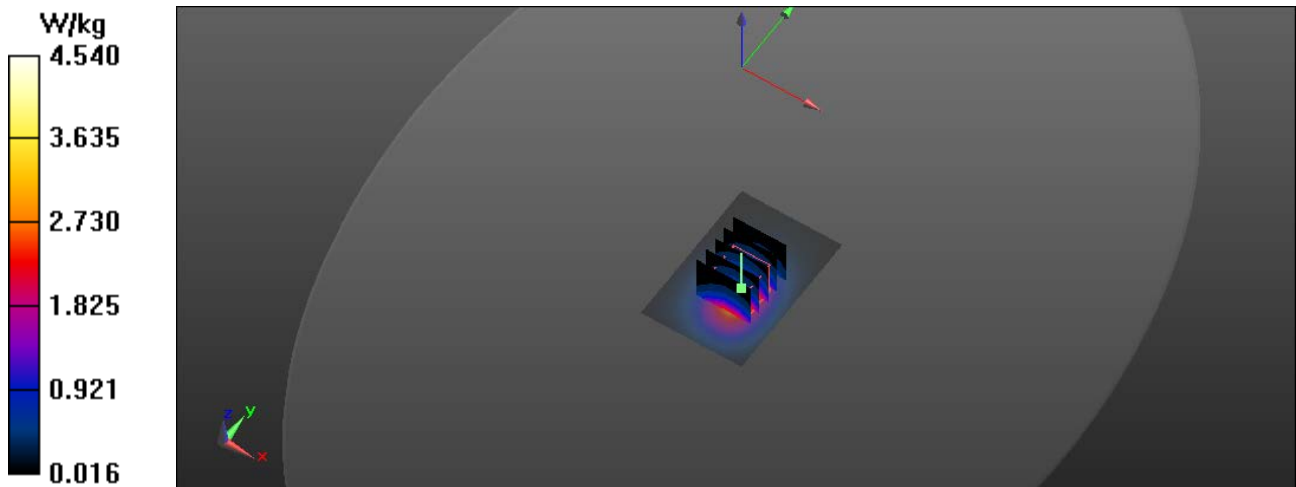
Communication System: UMTS (WCDMA); Frequency: 1880 MHz; Duty Cycle: 1:1
 Medium: MSL1900; Medium parameters used: $f = 1880$ MHz; $\sigma = 1.54$ S/m; $\epsilon_r = 53.19$; $\rho = 1000$ kg/m³
 Phantom section: Flat Section

Test Date: Date: 6/26/2013; Ambient Temp: 23 °C; Tissue Temp: 21 °C
 Probe: EX3DV4 - SN3693; ConvF(7.13, 7.13, 7.13); Calibrated: 8/20/2012;
 Sensor-Surface: 2mm (Mechanical Surface Detection)
 Electronics: DAE4 Sn759; Calibrated: 8/15/2012
 Phantom: ELI v4.0; Type: QDOVA001BB; Serial: TP:1065
 Measurement SW: DASY52, Version 52.8 (4); SEMCAD X Version 14.6.8 (7028)

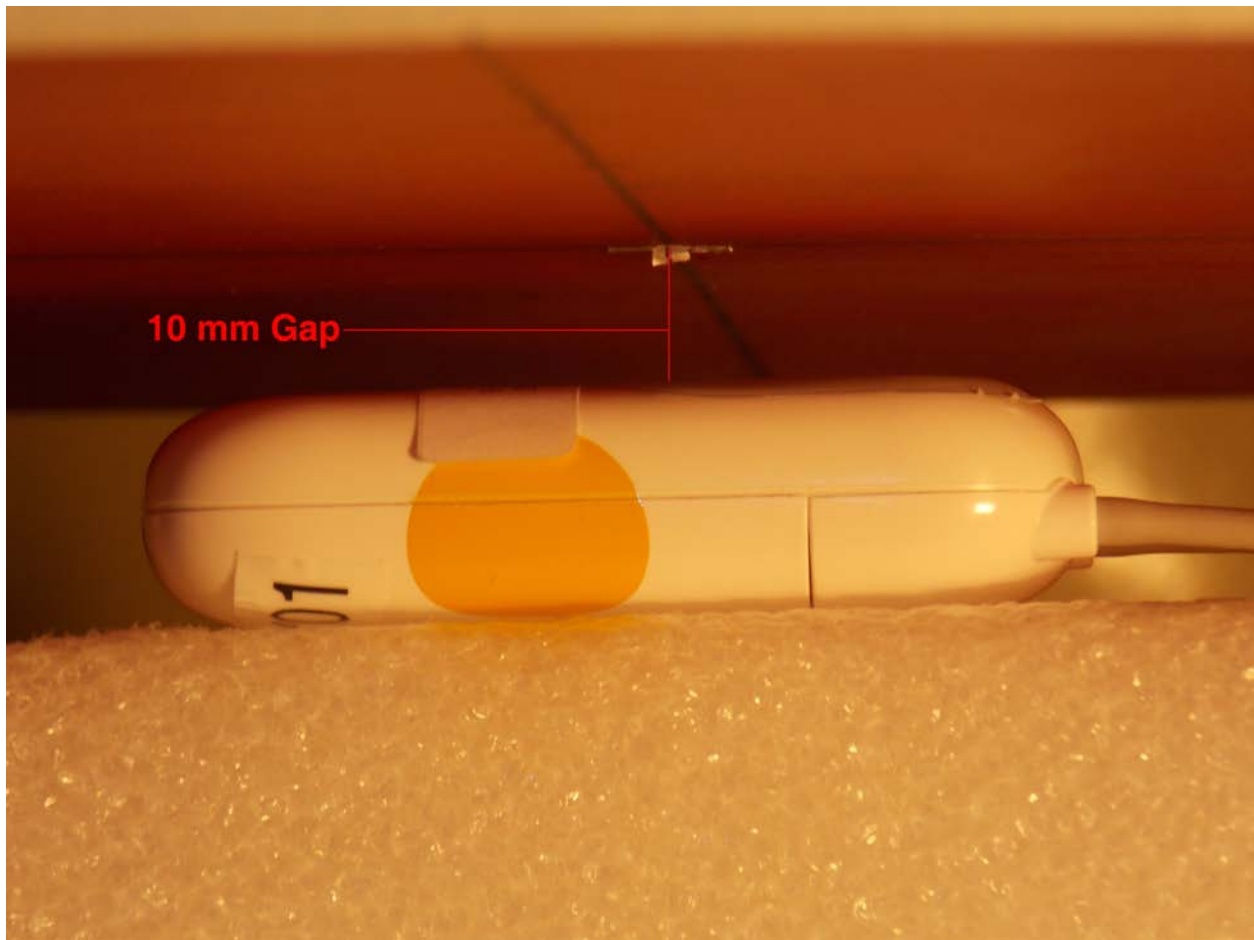
Procedure Notes:

1900 MHz Extremity /Back WCDMA Mid/Area Scan (41x61x1): Interpolated grid: dx=1.500 mm, dy=1.500 mm
 Maximum value of SAR (interpolated) = 4.54 W/kg

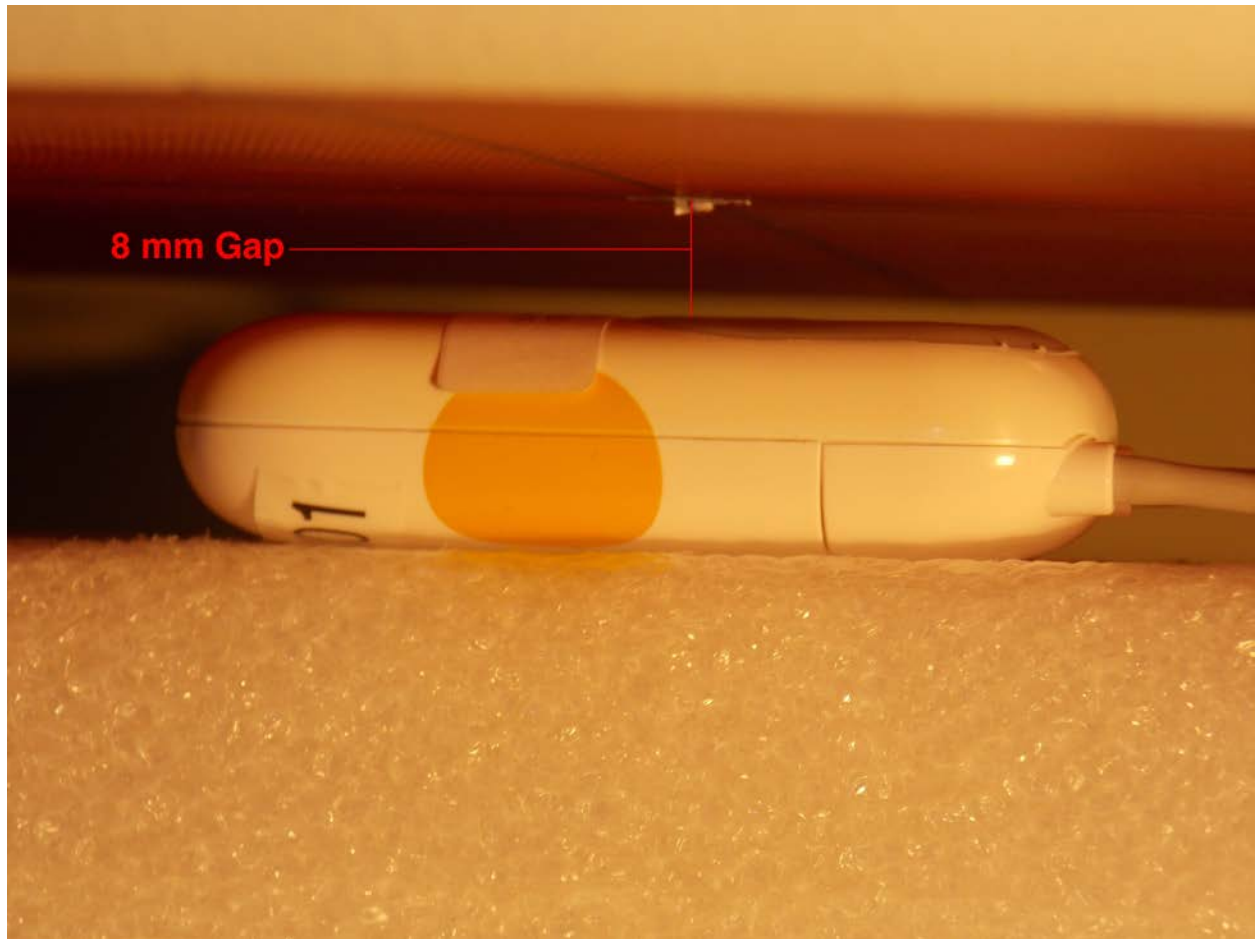
1900 MHz Extremity /Back WCDMA Mid/Zoom Scan (5x5x7)/Cube 0: Measurement grid: dx=8mm, dy=8mm, dz=5mm
 Reference Value = 43.230 V/m; Power Drift = -0.04 dB
 Peak SAR (extrapolated) = 4.87 W/kg
SAR(1 g) = 2.95 W/kg; SAR(10 g) = 1.58 W/kg
 Maximum value of SAR (measured) = 4.07 W/kg



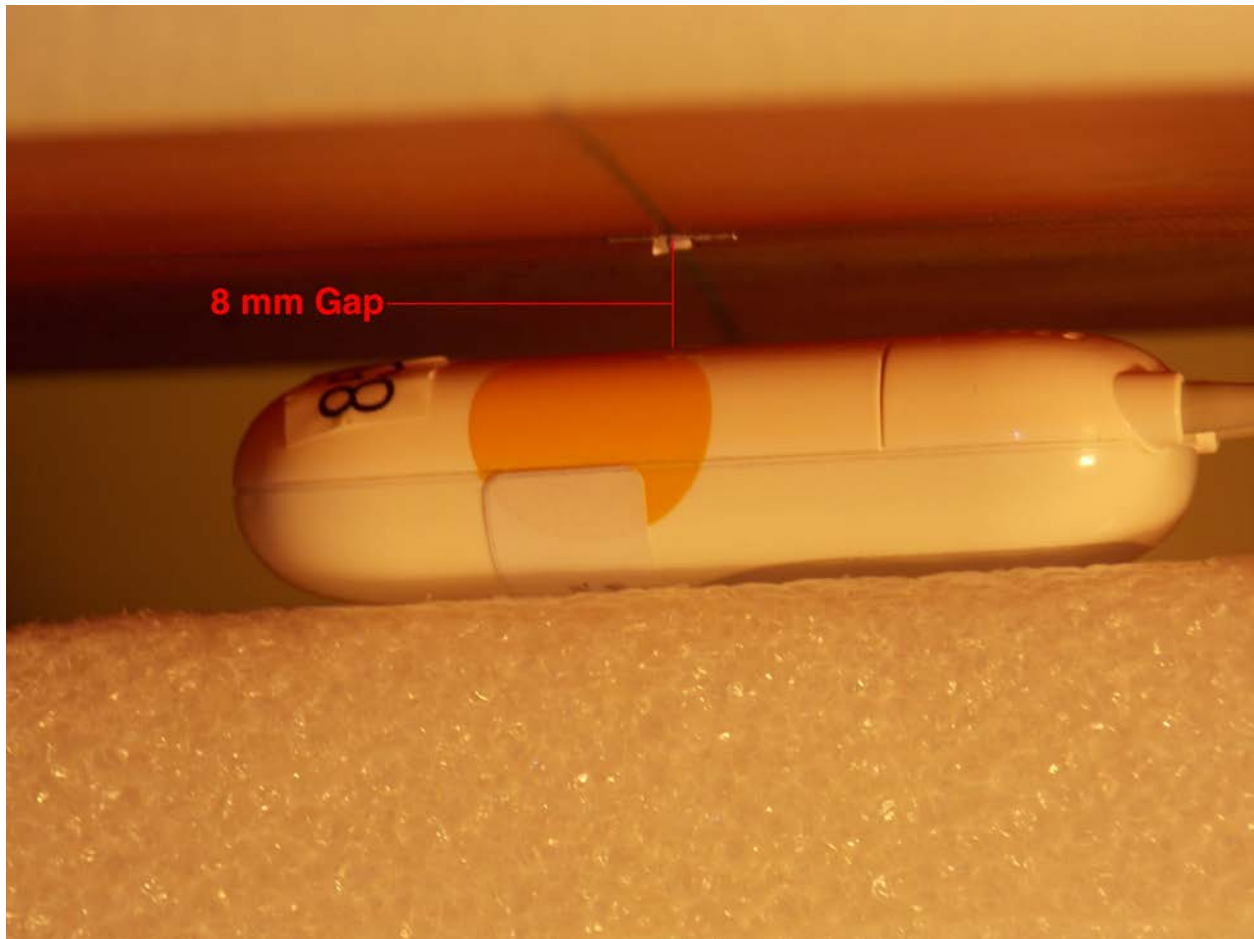
Appendix C – SAR Test Setup Photos



Test Position Face 10 mm Gap



**Test Position Front with Lanyard
8 mm Gap**



**Test Position Back with Lanyard
8 mm Gap**



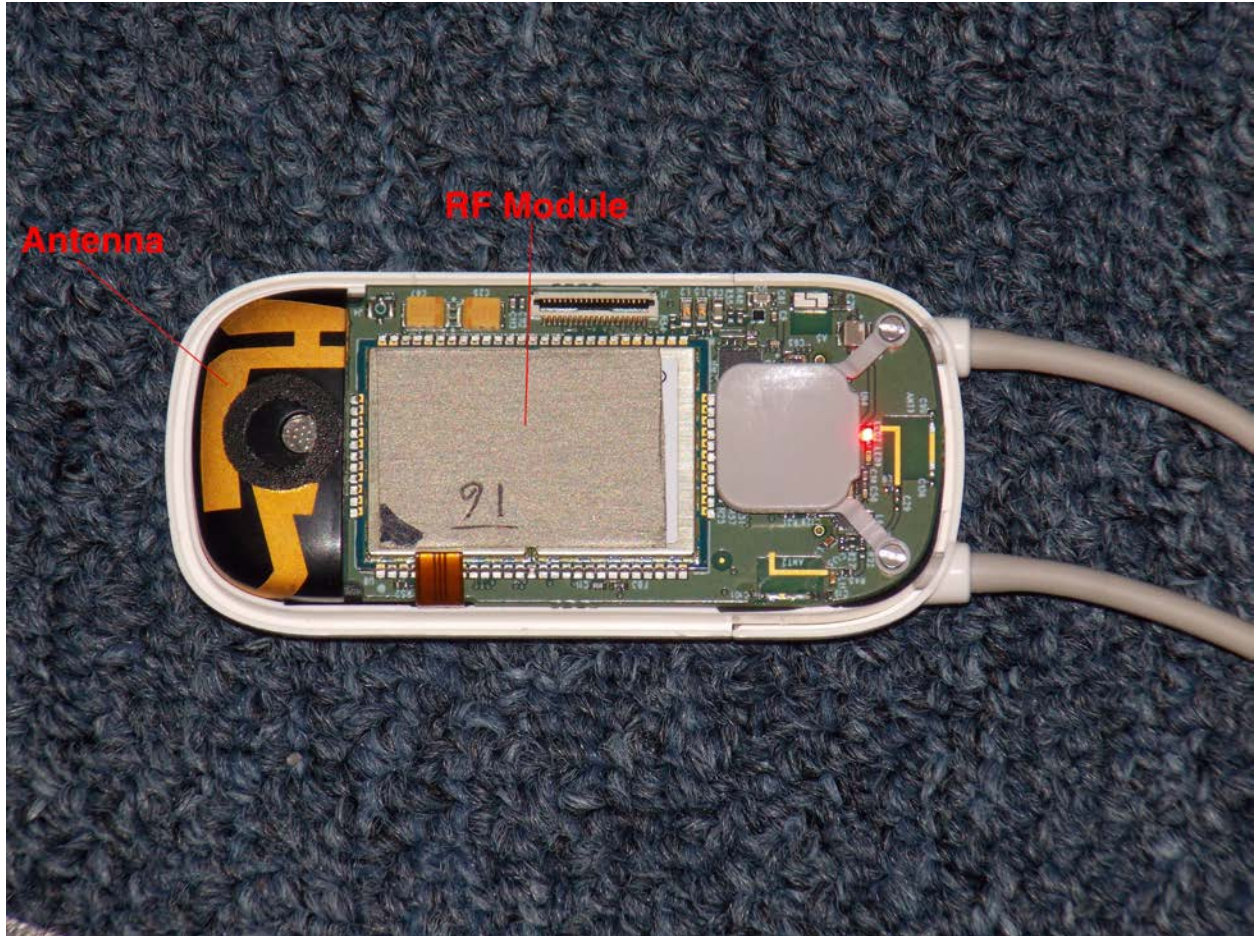
Test Position Back Extremity 0 mm Gap



Front of Device



Back of Device with Lanyard



Front Cover Removed

Appendix D – Probe Calibration Data Sheets



Accredited by the Swiss Accreditation Service (SAS)
The Swiss Accreditation Service is one of the signatories to the EA
Multilateral Agreement for the recognition of calibration certificates

Accreditation No.: **SCS 108**

Client **RF Exposure Lab**

Certificate No: **EX3-3693_Aug12**

CALIBRATION CERTIFICATE

Object **EX3DV4 - SN:3693**

Calibration procedure(s) **QA CAL-01.v8, QA CAL-14.v3, QA CAL-23.v4, QA CAL-25.v4
Calibration procedure for dosimetric E-field probes**

Calibration date: **August 20, 2012**

This calibration certificate documents the traceability to national standards, which realize the physical units of measurements (SI).
The measurements and the uncertainties with confidence probability are given on the following pages and are part of the certificate.

All calibrations have been conducted in the closed laboratory facility: environment temperature (22 ± 3)°C and humidity < 70%.

Calibration Equipment used (M&TE critical for calibration)

| Primary Standards | ID | Cal Date (Certificate No.) | Scheduled Calibration |
|----------------------------|-----------------|-----------------------------------|------------------------|
| Power meter E4419B | GB41293874 | 29-Mar-12 (No. 217-01508) | Apr-13 |
| Power sensor E4412A | MY41498087 | 29-Mar-12 (No. 217-01508) | Apr-13 |
| Reference 3 dB Attenuator | SN: S5054 (3c) | 27-Mar-12 (No. 217-01531) | Apr-13 |
| Reference 20 dB Attenuator | SN: S5086 (20b) | 27-Mar-12 (No. 217-01529) | Apr-13 |
| Reference 30 dB Attenuator | SN: S5129 (30b) | 27-Mar-12 (No. 217-01532) | Apr-13 |
| Reference Probe ES3DV2 | SN: 3013 | 29-Dec-11 (No. ES3-3013_Dec11) | Dec-12 |
| DAE4 | SN: 660 | 20-Jun-12 (No. DAE4-660_Jun12) | Jun-13 |
| Secondary Standards | ID | Check Date (in house) | Scheduled Check |
| RF generator HP 8648C | US3642U01700 | 4-Aug-99 (in house check Apr-11) | In house check: Apr-13 |
| Network Analyzer HP 8753E | US37390585 | 18-Oct-01 (in house check Oct-11) | In house check: Oct-12 |

| | | | |
|----------------|-------------------------------|-----------------------------------|---------------|
| Calibrated by: | Name Jeton Kastrati | Function Laboratory Technician | Signature |
| Approved by: | Name Katja Pokovic | Function Technical Manager | |

Issued: August 20, 2012

This calibration certificate shall not be reproduced except in full without written approval of the laboratory.



Accredited by the Swiss Accreditation Service (SAS)

Accreditation No.: **SCS 108**

The Swiss Accreditation Service is one of the signatories to the EA
Multilateral Agreement for the recognition of calibration certificates

Glossary:

| | |
|--------------------------|---|
| TSL | tissue simulating liquid |
| NORM _{x,y,z} | sensitivity in free space |
| ConvF | sensitivity in TSL / NORM _{x,y,z} |
| DCP | diode compression point |
| CF | crest factor (1/duty_cycle) of the RF signal |
| A, B, C | modulation dependent linearization parameters |
| Polarization φ | φ rotation around probe axis |
| Polarization ϑ | ϑ rotation around an axis that is in the plane normal to probe axis (at measurement center), i.e., $\vartheta = 0$ is normal to probe axis |

Calibration is Performed According to the Following Standards:

- IEEE Std 1528-2003, "IEEE Recommended Practice for Determining the Peak Spatial-Averaged Specific Absorption Rate (SAR) in the Human Head from Wireless Communications Devices: Measurement Techniques", December 2003
- IEC 62209-1, "Procedure to measure the Specific Absorption Rate (SAR) for hand-held devices used in close proximity to the ear (frequency range of 300 MHz to 3 GHz)", February 2005

Methods Applied and Interpretation of Parameters:

- NORM_{x,y,z}**: Assessed for E-field polarization $\vartheta = 0$ ($f \leq 900$ MHz in TEM-cell; $f > 1800$ MHz: R22 waveguide). NORM_{x,y,z} are only intermediate values, i.e., the uncertainties of NORM_{x,y,z} does not affect the E²-field uncertainty inside TSL (see below *ConvF*).
- NORM(f)_{x,y,z}** = NORM_{x,y,z} * *frequency_response* (see Frequency Response Chart). This linearization is implemented in DASY4 software versions later than 4.2. The uncertainty of the frequency response is included in the stated uncertainty of *ConvF*.
- DCP_{x,y,z}**: DCP are numerical linearization parameters assessed based on the data of power sweep with CW signal (no uncertainty required). DCP does not depend on frequency nor media.
- PAR**: PAR is the Peak to Average Ratio that is not calibrated but determined based on the signal characteristics
- A_{x,y,z}; B_{x,y,z}; C_{x,y,z}; VR_{x,y,z}; A, B, C** are numerical linearization parameters assessed based on the data of power sweep for specific modulation signal. The parameters do not depend on frequency nor media. VR is the maximum calibration range expressed in RMS voltage across the diode.
- ConvF and Boundary Effect Parameters**: Assessed in flat phantom using E-field (or Temperature Transfer Standard for $f \leq 800$ MHz) and inside waveguide using analytical field distributions based on power measurements for $f > 800$ MHz. The same setups are used for assessment of the parameters applied for boundary compensation (alpha, depth) of which typical uncertainty values are given. These parameters are used in DASY4 software to improve probe accuracy close to the boundary. The sensitivity in TSL corresponds to NORM_{x,y,z} * *ConvF* whereby the uncertainty corresponds to that given for *ConvF*. A frequency dependent *ConvF* is used in DASY version 4.4 and higher which allows extending the validity from ± 50 MHz to ± 100 MHz.
- Spherical isotropy (3D deviation from isotropy)**: in a field of low gradients realized using a flat phantom exposed by a patch antenna.
- Sensor Offset**: The sensor offset corresponds to the offset of virtual measurement center from the probe tip (on probe axis). No tolerance required.

Probe EX3DV4

SN:3693

Manufactured: April 22, 2009
Calibrated: August 20, 2012

Calibrated for DASY/EASY Systems
(Note: non-compatible with DASY2 system!)

DASY/EASY - Parameters of Probe: EX3DV4 - SN:3693

Basic Calibration Parameters

| | Sensor X | Sensor Y | Sensor Z | Unc (k=2) |
|---|----------|----------|----------|---------------|
| Norm ($\mu\text{V}/(\text{V}/\text{m})^2$) ^A | 0.49 | 0.48 | 0.46 | $\pm 10.1 \%$ |
| DCP (mV) ^B | 98.3 | 100.5 | 98.2 | |

Modulation Calibration Parameters

| UID | Communication System Name | PAR | | A dB | B dB | C dB | VR mV | Unc ^E (k=2) |
|-----|---------------------------|------|---|---------|---------|---------|----------|---------------------------|
| 0 | CW | 0.00 | X | 0.00 | 0.00 | 1.00 | 161.4 | $\pm 3.0 \%$ |
| | | | Y | 0.00 | 0.00 | 1.00 | 154.4 | |
| | | | Z | 0.00 | 0.00 | 1.00 | 158.9 | |

The reported uncertainty of measurement is stated as the standard uncertainty of measurement multiplied by the coverage factor $k=2$, which for a normal distribution corresponds to a coverage probability of approximately 95%.

^A The uncertainties of NormX,Y,Z do not affect the E^2 -field uncertainty inside TSL (see Pages 5 and 6).

^B Numerical linearization parameter: uncertainty not required.

^E Uncertainty is determined using the max. deviation from linear response applying rectangular distribution and is expressed for the square of the field value.

DASY/EASY - Parameters of Probe: EX3DV4 - SN:3693

Calibration Parameter Determined in Head Tissue Simulating Media

| f (MHz) ^C | Relative Permittivity ^F | Conductivity (S/m) ^F | ConvF X | ConvF Y | ConvF Z | Alpha | Depth (mm) | Unct. (k=2) |
|----------------------|------------------------------------|---------------------------------|---------|---------|---------|-------|------------|-------------|
| 750 | 41.9 | 0.89 | 8.99 | 8.99 | 8.99 | 0.23 | 1.20 | ± 12.0 % |
| 835 | 41.5 | 0.90 | 8.55 | 8.55 | 8.55 | 0.18 | 1.56 | ± 12.0 % |
| 1750 | 40.1 | 1.37 | 8.00 | 8.00 | 8.00 | 0.51 | 0.76 | ± 12.0 % |
| 1900 | 40.0 | 1.40 | 7.67 | 7.67 | 7.67 | 0.75 | 0.63 | ± 12.0 % |
| 2450 | 39.2 | 1.80 | 6.72 | 6.72 | 6.72 | 0.29 | 1.09 | ± 12.0 % |
| 2550 | 39.1 | 1.91 | 6.55 | 6.55 | 6.55 | 0.39 | 0.93 | ± 12.0 % |
| 5200 | 36.0 | 4.66 | 4.97 | 4.97 | 4.97 | 0.30 | 1.80 | ± 13.1 % |
| 5300 | 35.9 | 4.76 | 4.78 | 4.78 | 4.78 | 0.30 | 1.80 | ± 13.1 % |
| 5600 | 35.5 | 5.07 | 4.22 | 4.22 | 4.22 | 0.40 | 1.80 | ± 13.1 % |
| 5800 | 35.3 | 5.27 | 4.34 | 4.34 | 4.34 | 0.40 | 1.80 | ± 13.1 % |

^C Frequency validity of ± 100 MHz only applies for DASY v4.4 and higher (see Page 2), else it is restricted to ± 50 MHz. The uncertainty is the RSS of the ConvF uncertainty at calibration frequency and the uncertainty for the indicated frequency band.

^F At frequencies below 3 GHz, the validity of tissue parameters (ϵ and σ) can be relaxed to ± 10% if liquid compensation formula is applied to measured SAR values. At frequencies above 3 GHz, the validity of tissue parameters (ϵ and σ) is restricted to ± 5%. The uncertainty is the RSS of the ConvF uncertainty for indicated target tissue parameters.

DASY/EASY - Parameters of Probe: EX3DV4 - SN:3693

Calibration Parameter Determined in Body Tissue Simulating Media

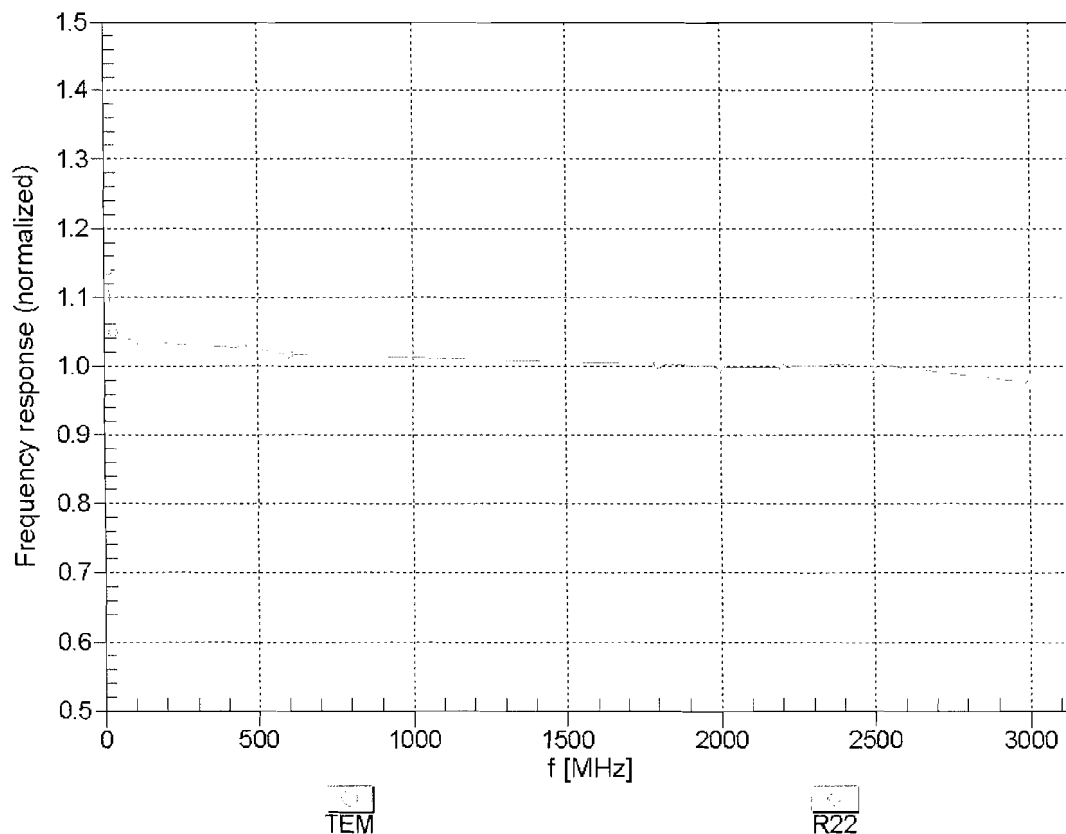
| f (MHz) ^C | Relative Permittivity ^F | Conductivity (S/m) ^F | ConvF X | ConvF Y | ConvF Z | Alpha | Depth (mm) | Unct. (k=2) |
|----------------------|------------------------------------|---------------------------------|---------|---------|---------|-------|------------|-------------|
| 750 | 55.5 | 0.96 | 8.84 | 8.84 | 8.84 | 0.29 | 1.09 | ± 12.0 % |
| 835 | 55.2 | 0.97 | 8.87 | 8.87 | 8.87 | 0.60 | 0.71 | ± 12.0 % |
| 1750 | 53.4 | 1.49 | 7.43 | 7.43 | 7.43 | 0.41 | 0.85 | ± 12.0 % |
| 1900 | 53.3 | 1.52 | 7.13 | 7.13 | 7.13 | 0.41 | 0.82 | ± 12.0 % |
| 2450 | 52.7 | 1.95 | 6.76 | 6.76 | 6.76 | 0.80 | 0.50 | ± 12.0 % |
| 2550 | 52.6 | 2.09 | 6.75 | 6.75 | 6.75 | 0.80 | 0.50 | ± 12.0 % |
| 5200 | 49.0 | 5.30 | 4.31 | 4.31 | 4.31 | 0.45 | 1.90 | ± 13.1 % |
| 5300 | 48.9 | 5.42 | 4.24 | 4.24 | 4.24 | 0.40 | 1.90 | ± 13.1 % |
| 5600 | 48.5 | 5.77 | 3.76 | 3.76 | 3.76 | 0.45 | 1.90 | ± 13.1 % |
| 5800 | 48.2 | 6.00 | 4.08 | 4.08 | 4.08 | 0.50 | 1.90 | ± 13.1 % |

^C Frequency validity of ± 100 MHz only applies for DASY v4.4 and higher (see Page 2), else it is restricted to ± 50 MHz. The uncertainty is the RSS of the ConvF uncertainty at calibration frequency and the uncertainty for the indicated frequency band.

^F At frequencies below 3 GHz, the validity of tissue parameters (ϵ and σ) can be relaxed to ± 10% if liquid compensation formula is applied to measured SAR values. At frequencies above 3 GHz, the validity of tissue parameters (ϵ and σ) is restricted to ± 5%. The uncertainty is the RSS of the ConvF uncertainty for indicated target tissue parameters.

Frequency Response of E-Field

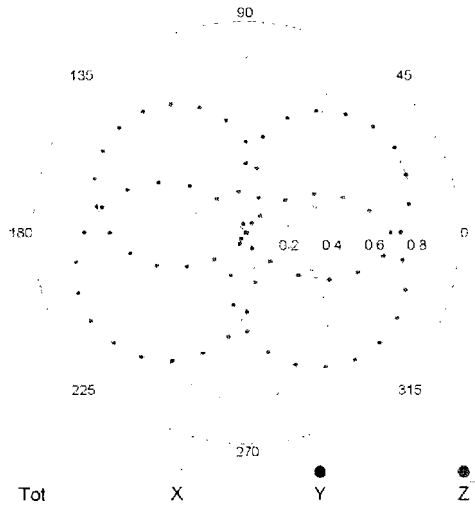
(TEM-Cell: ifi110 EXX, Waveguide: R22)



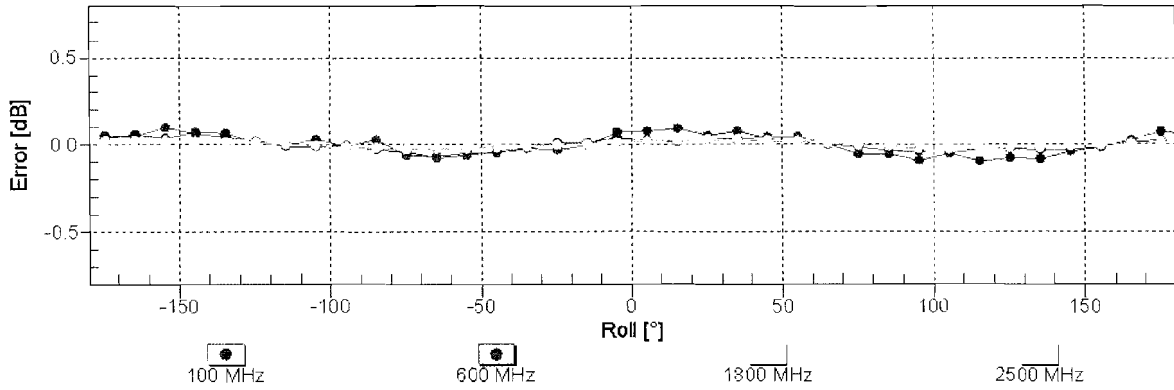
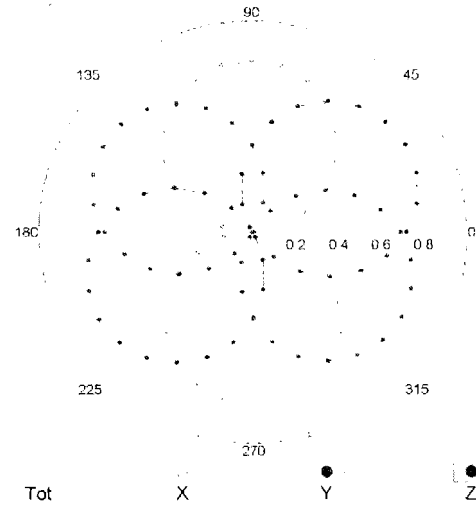
Uncertainty of Frequency Response of E-field: $\pm 6.3\%$ ($k=2$)

Receiving Pattern (ϕ), $\vartheta = 0^\circ$

f=600 MHz,TEM

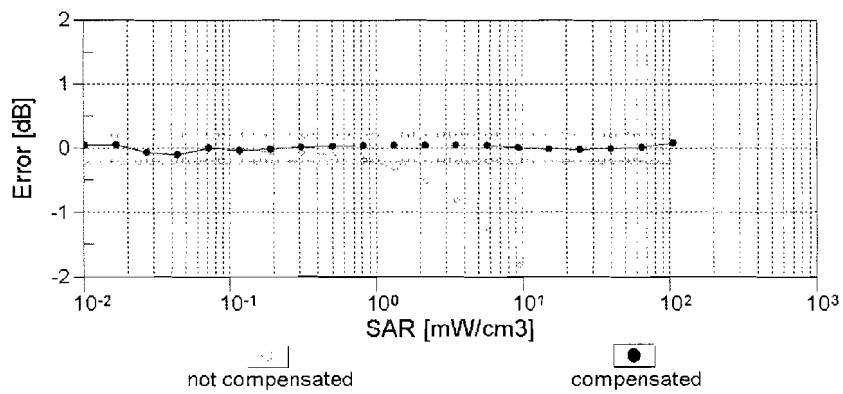
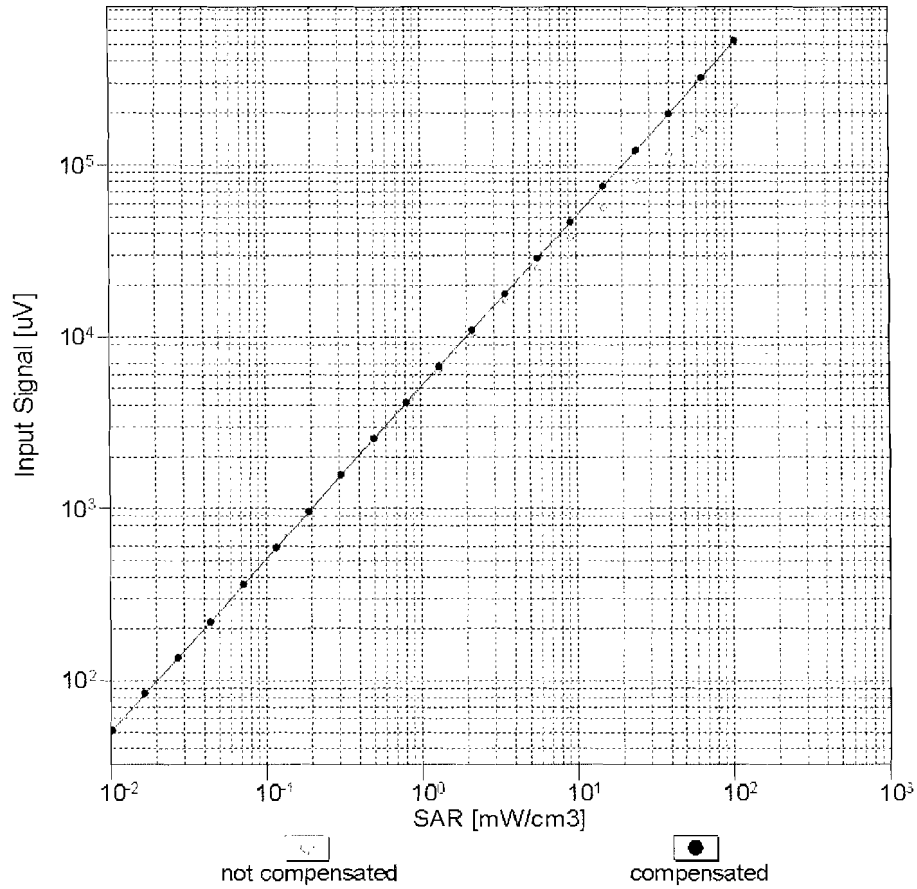


f=1800 MHz,R22



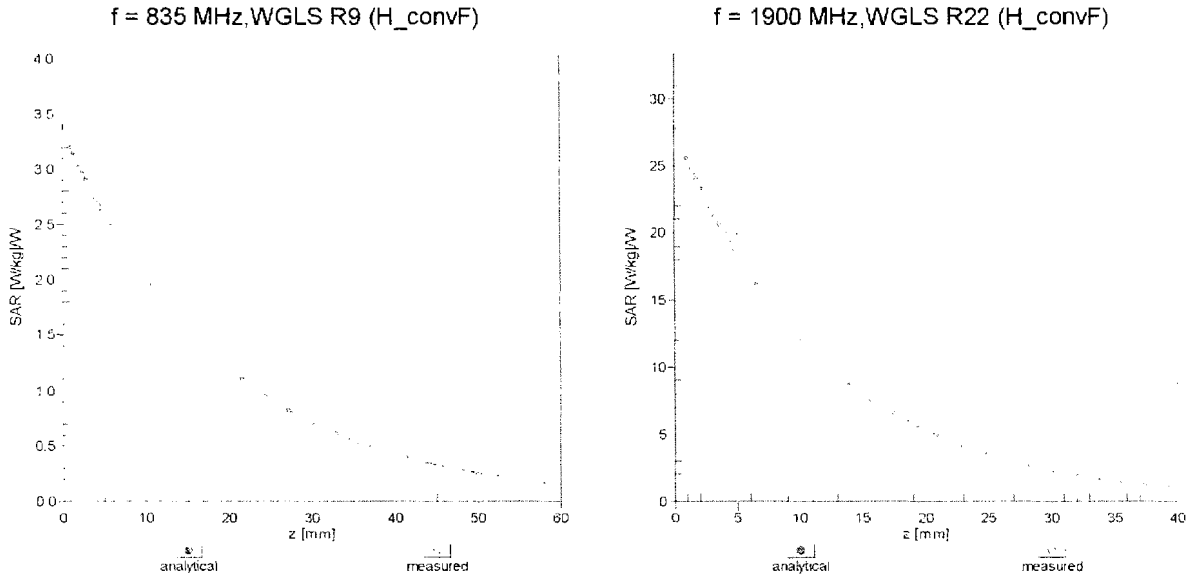
Uncertainty of Axial Isotropy Assessment: $\pm 0.5\%$ (k=2)

Dynamic Range f(SAR_{head}) (TEM cell , f = 900 MHz)



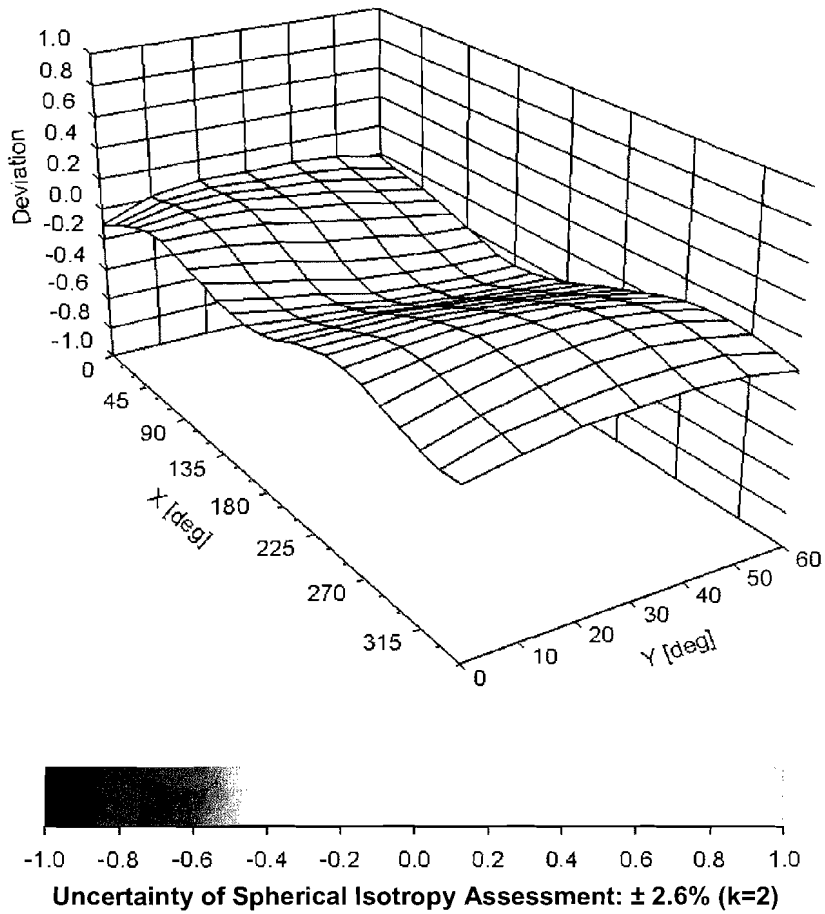
Uncertainty of Linearity Assessment: ± 0.6% (k=2)

Conversion Factor Assessment



Deviation from Isotropy in Liquid

Error (ϕ, θ), f = 900 MHz



DASY/EASY - Parameters of Probe: EX3DV4 - SN:3693

Other Probe Parameters

| | |
|---|------------|
| Sensor Arrangement | Triangular |
| Connector Angle (°) | 155.3 |
| Mechanical Surface Detection Mode | enabled |
| Optical Surface Detection Mode | disabled |
| Probe Overall Length | 337 mm |
| Probe Body Diameter | 10 mm |
| Tip Length | 9 mm |
| Tip Diameter | 2.5 mm |
| Probe Tip to Sensor X Calibration Point | 1 mm |
| Probe Tip to Sensor Y Calibration Point | 1 mm |
| Probe Tip to Sensor Z Calibration Point | 1 mm |
| Recommended Measurement Distance from Surface | 2 mm |

Appendix E – Dipole Calibration Data Sheets



Accredited by the Swiss Accreditation Service (SAS)
The Swiss Accreditation Service is one of the signatories to the EA
Multilateral Agreement for the recognition of calibration certificates

Accreditation No.: **SCS 108**

Client **RF Exposure Lab**

Certificate No: **D835V2-4d089_Dec12**

CALIBRATION CERTIFICATE

Object **D835V2 - SN: 4d089**

Calibration procedure(s) **QA CAL-05.v8**
Calibration procedure for dipole validation kits above 700 MHz

Calibration date: **December 03, 2012**

This calibration certificate documents the traceability to national standards, which realize the physical units of measurements (SI).
The measurements and the uncertainties with confidence probability are given on the following pages and are part of the certificate.

All calibrations have been conducted in the closed laboratory facility: environment temperature (22 ± 3)°C and humidity < 70%.

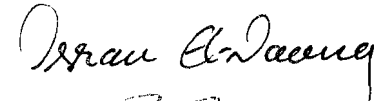

Calibration Equipment used (M&TE critical for calibration)

| Primary Standards | ID # | Cal Date (Certificate No.) | Scheduled Calibration |
|-----------------------------|--------------------|--------------------------------|-----------------------|
| Power meter EPM-442A | GB37480704 | 01-Nov-12 (No. 217-01640) | Oct-13 |
| Power sensor HP 8481A | US37292783 | 01-Nov-12 (No. 217-01640) | Oct-13 |
| Reference 20 dB Attenuator | SN: 5058 (20k) | 27-Mar-12 (No. 217-01530) | Apr-13 |
| Type-N mismatch combination | SN: 5047.3 / 06327 | 27-Mar-12 (No. 217-01533) | Apr-13 |
| Reference Probe ES3DV3 | SN: 3205 | 30-Dec-11 (No. ES3-3205_Dec11) | Dec-12 |
| DAE4 | SN: 601 | 27-Jun-12 (No. DAE4-601_Jun12) | Jun-13 |

| Secondary Standards | ID # | Check Date (in house) | Scheduled Check |
|---------------------------|------------------|-----------------------------------|------------------------|
| Power sensor HP 8481A | MY41092317 | 18-Oct-02 (in house check Oct-11) | In house check: Oct-13 |
| RF generator R&S SMT-06 | 100005 | 04-Aug-99 (in house check Oct-11) | In house check: Oct-13 |
| Network Analyzer HP 8753E | US37390585 S4206 | 18-Oct-01 (in house check Oct-12) | In house check: Oct-13 |

Calibrated by: **Israe El-Naouq** Name: **Israe El-Naouq** Function: **Laboratory Technician**

Approved by: **Katja Pokovic** Name: **Katja Pokovic** Function: **Technical Manager**

Signature



Issued: December 3, 2012

This calibration certificate shall not be reproduced except in full without written approval of the laboratory.



Accredited by the Swiss Accreditation Service (SAS)

Accreditation No.: **SCS 108**

The Swiss Accreditation Service is one of the signatories to the EA
Multilateral Agreement for the recognition of calibration certificates

Glossary:

| | |
|-------|---------------------------------|
| TSL | tissue simulating liquid |
| ConvF | sensitivity in TSL / NORM x,y,z |
| N/A | not applicable or not measured |

Calibration is Performed According to the Following Standards:

- IEEE Std 1528-2003, "IEEE Recommended Practice for Determining the Peak Spatial-Averaged Specific Absorption Rate (SAR) in the Human Head from Wireless Communications Devices: Measurement Techniques", December 2003
- IEC 62209-1, "Procedure to measure the Specific Absorption Rate (SAR) for hand-held devices used in close proximity to the ear (frequency range of 300 MHz to 3 GHz)", February 2005
- Federal Communications Commission Office of Engineering & Technology (FCC OET), "Evaluating Compliance with FCC Guidelines for Human Exposure to Radiofrequency Electromagnetic Fields; Additional Information for Evaluating Compliance of Mobile and Portable Devices with FCC Limits for Human Exposure to Radiofrequency Emissions", Supplement C (Edition 01-01) to Bulletin 65

Additional Documentation:

- DASY4/5 System Handbook

Methods Applied and Interpretation of Parameters:

- Measurement Conditions:** Further details are available from the Validation Report at the end of the certificate. All figures stated in the certificate are valid at the frequency indicated.
- Antenna Parameters with TSL:** The dipole is mounted with the spacer to position its feed point exactly below the center marking of the flat phantom section, with the arms oriented parallel to the body axis.
- Feed Point Impedance and Return Loss:** These parameters are measured with the dipole positioned under the liquid filled phantom. The impedance stated is transformed from the measurement at the SMA connector to the feed point. The Return Loss ensures low reflected power. No uncertainty required.
- Electrical Delay:** One-way delay between the SMA connector and the antenna feed point. No uncertainty required.
- SAR measured:** SAR measured at the stated antenna input power.
- SAR normalized:** SAR as measured, normalized to an input power of 1 W at the antenna connector.
- SAR for nominal TSL parameters:** The measured TSL parameters are used to calculate the nominal SAR result.

The reported uncertainty of measurement is stated as the standard uncertainty of measurement multiplied by the coverage factor $k=2$, which for a normal distribution corresponds to a coverage probability of approximately 95%.

Measurement Conditions

DASY system configuration, as far as not given on page 1.

| | | |
|-------------------------------------|------------------------|-------------|
| DASY Version | DASY5 | V52.8.3 |
| Extrapolation | Advanced Extrapolation | |
| Phantom | Modular Flat Phantom | |
| Distance Dipole Center - TSL | 15 mm | with Spacer |
| Zoom Scan Resolution | dx, dy, dz = 5 mm | |
| Frequency | 835 MHz \pm 1 MHz | |

Head TSL parameters

The following parameters and calculations were applied.

| | Temperature | Permittivity | Conductivity |
|--|---------------------|----------------|----------------------|
| Nominal Head TSL parameters | 22.0 °C | 41.5 | 0.90 mho/m |
| Measured Head TSL parameters | (22.0 \pm 0.2) °C | 41.4 \pm 6 % | 0.92 mho/m \pm 6 % |
| Head TSL temperature change during test | < 0.5 °C | ---- | ---- |

SAR result with Head TSL

| SAR averaged over 1 cm³ (1 g) of Head TSL | Condition | |
|---|--------------------|--|
| SAR measured | 250 mW input power | 2.38 W/kg |
| SAR for nominal Head TSL parameters | normalized to 1W | 9.36 W/kg \pm 17.0 % (k=2) |

| SAR averaged over 10 cm³ (10 g) of Head TSL | condition | |
|---|--------------------|--|
| SAR measured | 250 mW input power | 1.55 W/kg |
| SAR for nominal Head TSL parameters | normalized to 1W | 6.12 W/kg \pm 16.5 % (k=2) |

Body TSL parameters

The following parameters and calculations were applied.

| | Temperature | Permittivity | Conductivity |
|--|---------------------|----------------|----------------------|
| Nominal Body TSL parameters | 22.0 °C | 55.2 | 0.97 mho/m |
| Measured Body TSL parameters | (22.0 \pm 0.2) °C | 54.5 \pm 6 % | 0.99 mho/m \pm 6 % |
| Body TSL temperature change during test | < 0.5 °C | ---- | ---- |

SAR result with Body TSL

| SAR averaged over 1 cm³ (1 g) of Body TSL | Condition | |
|---|--------------------|--|
| SAR measured | 250 mW input power | 2.42 W/kg |
| SAR for nominal Body TSL parameters | normalized to 1W | 9.51 W/kg \pm 17.0 % (k=2) |

| SAR averaged over 10 cm³ (10 g) of Body TSL | condition | |
|---|--------------------|--|
| SAR measured | 250 mW input power | 1.59 W/kg |
| SAR for nominal Body TSL parameters | normalized to 1W | 6.27 W/kg \pm 16.5 % (k=2) |

Appendix

Antenna Parameters with Head TSL

| | |
|--------------------------------------|--------------------------------|
| Impedance, transformed to feed point | 51.7 Ω - 2.5 j Ω |
| Return Loss | - 30.5 dB |

Antenna Parameters with Body TSL

| | |
|--------------------------------------|--------------------------------|
| Impedance, transformed to feed point | 47.4 Ω - 4.8 j Ω |
| Return Loss | - 25.0 dB |

General Antenna Parameters and Design

| | |
|----------------------------------|----------|
| Electrical Delay (one direction) | 1.391 ns |
|----------------------------------|----------|

After long term use with 100W radiated power, only a slight warming of the dipole near the feedpoint can be measured.

The dipole is made of standard semirigid coaxial cable. The center conductor of the feeding line is directly connected to the second arm of the dipole. The antenna is therefore short-circuited for DC-signals. On some of the dipoles, small end caps are added to the dipole arms in order to improve matching when loaded according to the position as explained in the "Measurement Conditions" paragraph. The SAR data are not affected by this change. The overall dipole length is still according to the Standard.

No excessive force must be applied to the dipole arms, because they might bend or the soldered connections near the feedpoint may be damaged.

Additional EUT Data

| | |
|-----------------|------------------|
| Manufactured by | SPEAG |
| Manufactured on | October 17, 2008 |

Test Laboratory: SPEAG, Zurich, Switzerland

DUT: Dipole 835 MHz; Type: D835V2; Serial: D835V2 - SN: 4d089

Communication System: CW; Frequency: 835 MHz

Medium parameters used: $f = 835 \text{ MHz}$; $\sigma = 0.92 \text{ mho/m}$; $\epsilon_r = 41.4$; $\rho = 1000 \text{ kg/m}^3$

Phantom section: Flat Section

Measurement Standard: DASY5 (IEEE/IEC/ANSI C63.19-2007)

DASY52 Configuration:

- Probe: ES3DV3 - SN3205; ConvF(6.07, 6.07, 6.07); Calibrated: 30.12.2011;
- Sensor-Surface: 3mm (Mechanical Surface Detection)
- Electronics: DAE4 Sn601; Calibrated: 27.06.2012
- Phantom: Flat Phantom 4.9L; Type: QD000P49AA; Serial: 1001
- DASY52 52.8.3(988); SEMCAD X 14.6.7(6848)

Dipole Calibration for Head Tissue/Pin=250 mW, d=15mm/Zoom Scan (7x7x7)/Cube 0:

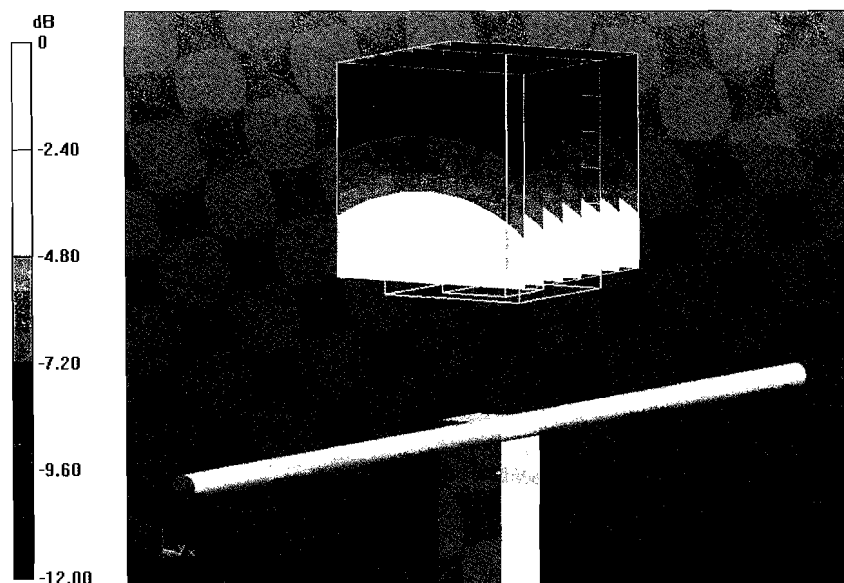
Measurement grid: $dx=5\text{mm}$, $dy=5\text{mm}$, $dz=5\text{mm}$

Reference Value = 56.782 V/m; Power Drift = -0.01 dB

Peak SAR (extrapolated) = 3.58 W/kg

SAR(1 g) = 2.38 W/kg; SAR(10 g) = 1.55 W/kg

Maximum value of SAR (measured) = 2.79 W/kg



0 dB = 2.79 W/kg = 4.46 dBW/kg

Impedance Measurement Plot for Head TSL

3 Dec 2012 14:31:39

CH1 S11 1 U FS 1: 51.703 Ω -2.4961 Ω 76.361 pF 835.000 000 MHz

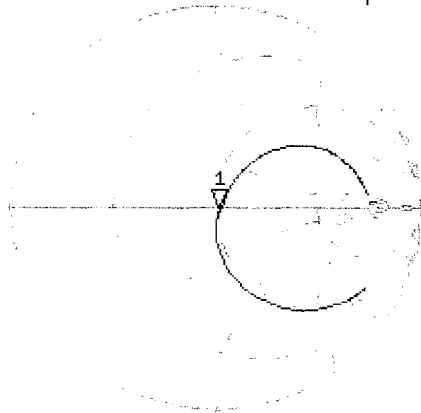
*

Del

Cor

Avg
16

H1 d

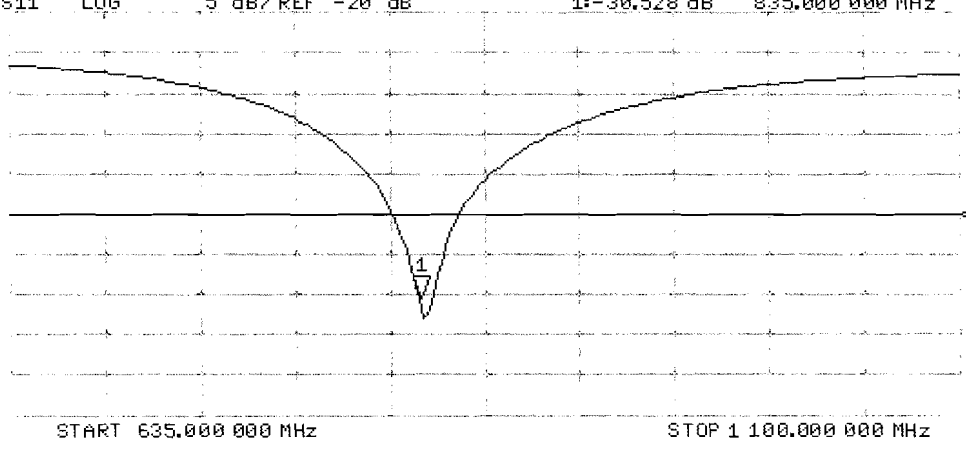


CH2 S11 LOG 5 dB/REF -20 dB 1:-30.528 dB 835.000 000 MHz

Cor

Avg
16

H1 d



Test Laboratory: SPEAG, Zurich, Switzerland

DUT: Dipole 835 MHz; Type: D835V2; Serial: D835V2 - SN: 4d089

Communication System: CW; Frequency: 835 MHz

Medium parameters used: $f = 835 \text{ MHz}$; $\sigma = 0.99 \text{ mho/m}$; $\epsilon_r = 54.5$; $\rho = 1000 \text{ kg/m}^3$

Phantom section: Flat Section

Measurement Standard: DASY5 (IEEE/IEC/ANSI C63.19-2007)

DASY52 Configuration:

- Probe: ES3DV3 - SN3205; ConvF(6.02, 6.02, 6.02); Calibrated: 30.12.2011;
- Sensor-Surface: 3mm (Mechanical Surface Detection)
- Electronics: DAE4 Sn601; Calibrated: 27.06.2012
- Phantom: Flat Phantom 4.9L; Type: QD000P49AA; Serial: 1001
- DASY52 52.8.3(988); SEMCAD X 14.6.7(6848)

Dipole Calibration for Body Tissue/Pin=250 mW, d=15mm/Zoom Scan (7x7x7)/Cube 0:

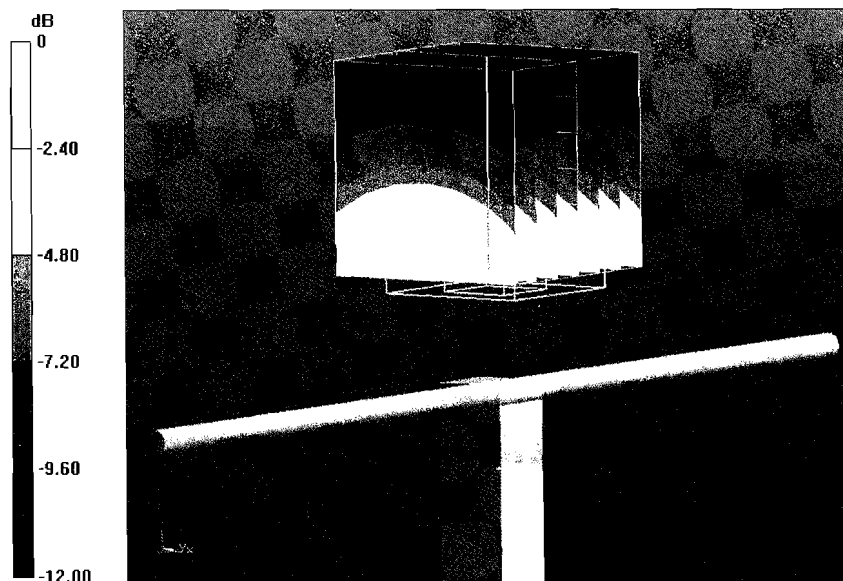
Measurement grid: dx=5mm, dy=5mm, dz=5mm

Reference Value = 55.384 V/m; Power Drift = -0.01 dB

Peak SAR (extrapolated) = 3.54 W/kg

SAR(1 g) = 2.42 W/kg; SAR(10 g) = 1.59 W/kg

Maximum value of SAR (measured) = 2.82 W/kg



0 dB = 2.82 W/kg = 4.50 dBW/kg

Impedance Measurement Plot for Body TSL

3 Dec 2012 10:26:14

CH1 S11 1 U FS 1: 47.379 Ω -4.8359 Ω 39.414 pF 835.000 000 MHz

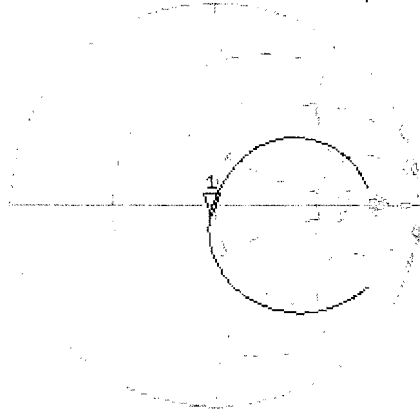
*

Del

Cor

Avg
16

H1d

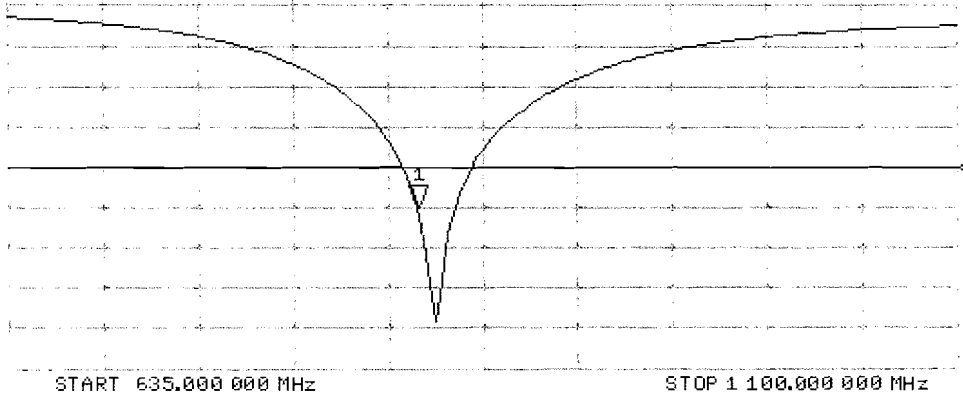


CH2 S11 LOG 5 dB/REF -20 dB 1:-24.975 dB 835.000 000 MHz

Cor

Avg
16

H1d





Accredited by the Swiss Accreditation Service (SAS)
The Swiss Accreditation Service is one of the signatories to the EA
Multilateral Agreement for the recognition of calibration certificates

Accreditation No.: **SCS 108**

Client **RF Exposure Lab**

Certificate No: **D1900V2-5d116_Dec12**

CALIBRATION CERTIFICATE

Object **D1900V2 - SN: 5d116**

Calibration procedure(s) **QA CAL-05.v8**
Calibration procedure for dipole validation kits above 700 MHz

Calibration date: **December 06, 2012**

This calibration certificate documents the traceability to national standards, which realize the physical units of measurements (SI).
The measurements and the uncertainties with confidence probability are given on the following pages and are part of the certificate.

All calibrations have been conducted in the closed laboratory facility: environment temperature (22 ± 3)°C and humidity < 70%.

Calibration Equipment used (M&TE critical for calibration)

| Primary Standards | ID # | Cal Date (Certificate No.) | Scheduled Calibration |
|-----------------------------|--------------------|-----------------------------------|------------------------|
| Power meter EPM-442A | GB37480704 | 01-Nov-12 (No. 217-01640) | Oct-13 |
| Power sensor HP 8481A | US37292783 | 01-Nov-12 (No. 217-01640) | Oct-13 |
| Reference 20 dB Attenuator | SN: 5058 (20k) | 27-Mar-12 (No. 217-01530) | Apr-13 |
| Type-N mismatch combination | SN: 5047.3 / 06327 | 27-Mar-12 (No. 217-01533) | Apr-13 |
| Reference Probe ES3DV3 | SN: 3205 | 30-Dec-11 (No. ES3-3205_Dec11) | Dec-12 |
| DAE4 | SN: 601 | 27-Jun-12 (No. DAE4-601_Jun12) | Jun-13 |
| Secondary Standards | ID # | Check Date (in house) | Scheduled Check |
| Power sensor HP 8481A | MY41092317 | 18-Oct-02 (in house check Oct-11) | In house check: Oct-13 |
| RF generator R&S SMT-06 | 100005 | 04-Aug-99 (in house check Oct-11) | In house check: Oct-13 |
| Network Analyzer HP 8753E | US37390585 S4206 | 18-Oct-01 (in house check Oct-12) | In house check: Oct-13 |

| | | | |
|----------------|------------------------|-----------------------------------|---------------|
| Calibrated by: | Name Israe El-Naouq | Function Laboratory Technician | Signature |
| Approved by: | Katja Pokovic | Technical Manager | |

Issued: December 6, 2012

This calibration certificate shall not be reproduced except in full without written approval of the laboratory.



Accredited by the Swiss Accreditation Service (SAS)

Accreditation No.: **SCS 108**

The Swiss Accreditation Service is one of the signatories to the EA
Multilateral Agreement for the recognition of calibration certificates

Glossary:

| | |
|-------|---------------------------------|
| TSL | tissue simulating liquid |
| ConvF | sensitivity in TSL / NORM x,y,z |
| N/A | not applicable or not measured |

Calibration is Performed According to the Following Standards:

- IEEE Std 1528-2003, "IEEE Recommended Practice for Determining the Peak Spatial-Averaged Specific Absorption Rate (SAR) in the Human Head from Wireless Communications Devices: Measurement Techniques", December 2003
- IEC 62209-1, "Procedure to measure the Specific Absorption Rate (SAR) for hand-held devices used in close proximity to the ear (frequency range of 300 MHz to 3 GHz)", February 2005
- Federal Communications Commission Office of Engineering & Technology (FCC OET), "Evaluating Compliance with FCC Guidelines for Human Exposure to Radiofrequency Electromagnetic Fields; Additional Information for Evaluating Compliance of Mobile and Portable Devices with FCC Limits for Human Exposure to Radiofrequency Emissions", Supplement C (Edition 01-01) to Bulletin 65

Additional Documentation:

- DASY4/5 System Handbook

Methods Applied and Interpretation of Parameters:

- Measurement Conditions:* Further details are available from the Validation Report at the end of the certificate. All figures stated in the certificate are valid at the frequency indicated.
- Antenna Parameters with TSL:* The dipole is mounted with the spacer to position its feed point exactly below the center marking of the flat phantom section, with the arms oriented parallel to the body axis.
- Feed Point Impedance and Return Loss:* These parameters are measured with the dipole positioned under the liquid filled phantom. The impedance stated is transformed from the measurement at the SMA connector to the feed point. The Return Loss ensures low reflected power. No uncertainty required.
- Electrical Delay:* One-way delay between the SMA connector and the antenna feed point. No uncertainty required.
- SAR measured:* SAR measured at the stated antenna input power.
- SAR normalized:* SAR as measured, normalized to an input power of 1 W at the antenna connector.
- SAR for nominal TSL parameters:* The measured TSL parameters are used to calculate the nominal SAR result.

The reported uncertainty of measurement is stated as the standard uncertainty of measurement multiplied by the coverage factor $k=2$, which for a normal distribution corresponds to a coverage probability of approximately 95%.

Measurement Conditions

DASY system configuration, as far as not given on page 1.

| | | |
|-------------------------------------|------------------------|-------------|
| DASY Version | DASY5 | V52.8.3 |
| Extrapolation | Advanced Extrapolation | |
| Phantom | Modular Flat Phantom | |
| Distance Dipole Center - TSL | 10 mm | with Spacer |
| Zoom Scan Resolution | dx, dy, dz = 5 mm | |
| Frequency | 1900 MHz \pm 1 MHz | |

Head TSL parameters

The following parameters and calculations were applied.

| | Temperature | Permittivity | Conductivity |
|--|---------------------|----------------|----------------------|
| Nominal Head TSL parameters | 22.0 °C | 40.0 | 1.40 mho/m |
| Measured Head TSL parameters | (22.0 \pm 0.2) °C | 39.5 \pm 6 % | 1.38 mho/m \pm 6 % |
| Head TSL temperature change during test | < 0.5 °C | ---- | ---- |

SAR result with Head TSL

| SAR averaged over 1 cm³ (1 g) of Head TSL | Condition | |
|---|--------------------|--|
| SAR measured | 250 mW input power | 9.97 W/kg |
| SAR for nominal Head TSL parameters | normalized to 1W | 40.1 W/kg \pm 17.0 % (k=2) |

| SAR averaged over 10 cm³ (10 g) of Head TSL | condition | |
|---|--------------------|--|
| SAR measured | 250 mW input power | 5.24 W/kg |
| SAR for nominal Head TSL parameters | normalized to 1W | 21.0 W/kg \pm 16.5 % (k=2) |

Body TSL parameters

The following parameters and calculations were applied.

| | Temperature | Permittivity | Conductivity |
|--|---------------------|----------------|----------------------|
| Nominal Body TSL parameters | 22.0 °C | 53.3 | 1.52 mho/m |
| Measured Body TSL parameters | (22.0 \pm 0.2) °C | 52.2 \pm 6 % | 1.52 mho/m \pm 6 % |
| Body TSL temperature change during test | < 0.5 °C | ---- | ---- |

SAR result with Body TSL

| SAR averaged over 1 cm³ (1 g) of Body TSL | Condition | |
|---|--------------------|--|
| SAR measured | 250 mW input power | 10.1 W/kg |
| SAR for nominal Body TSL parameters | normalized to 1W | 40.2 W/kg \pm 17.0 % (k=2) |

| SAR averaged over 10 cm³ (10 g) of Body TSL | condition | |
|---|--------------------|--|
| SAR measured | 250 mW input power | 5.31 W/kg |
| SAR for nominal Body TSL parameters | normalized to 1W | 21.2 W/kg \pm 16.5 % (k=2) |

Appendix

Antenna Parameters with Head TSL

| | |
|--------------------------------------|--------------------------------|
| Impedance, transformed to feed point | 51.4 Ω + 6.6 j Ω |
| Return Loss | - 23.5 dB |

Antenna Parameters with Body TSL

| | |
|--------------------------------------|--------------------------------|
| Impedance, transformed to feed point | 47.4 Ω + 6.7 j Ω |
| Return Loss | - 22.7 dB |

General Antenna Parameters and Design

| | |
|----------------------------------|----------|
| Electrical Delay (one direction) | 1.202 ns |
|----------------------------------|----------|

After long term use with 100W radiated power, only a slight warming of the dipole near the feedpoint can be measured.

The dipole is made of standard semirigid coaxial cable. The center conductor of the feeding line is directly connected to the second arm of the dipole. The antenna is therefore short-circuited for DC-signals. On some of the dipoles, small end caps are added to the dipole arms in order to improve matching when loaded according to the position as explained in the "Measurement Conditions" paragraph. The SAR data are not affected by this change. The overall dipole length is still according to the Standard.

No excessive force must be applied to the dipole arms, because they might bend or the soldered connections near the feedpoint may be damaged.

Additional EUT Data

| | |
|-----------------|-----------------|
| Manufactured by | SPEAG |
| Manufactured on | August 21, 2009 |

Test Laboratory: SPEAG, Zurich, Switzerland

DUT: Dipole 1900 MHz; Type: D1900V2; Serial: D1900V2 - SN: 5d116

Communication System: CW; Frequency: 1900 MHz

Medium parameters used: $f = 1900$ MHz; $\sigma = 1.38$ mho/m; $\epsilon_r = 39.5$; $\rho = 1000$ kg/m³

Phantom section: Flat Section

Measurement Standard: DASY5 (IEEE/IEC/ANSI C63.19-2007)

DASY52 Configuration:

- Probe: ES3DV3 - SN3205; ConvF(5.01, 5.01, 5.01); Calibrated: 30.12.2011;
- Sensor-Surface: 3mm (Mechanical Surface Detection)
- Electronics: DAE4 Sn601; Calibrated: 27.06.2012
- Phantom: Flat Phantom 5.0 (front); Type: QD000P50AA; Serial: 1001
- DASY52 52.8.3(988); SEMCAD X 14.6.7(6848)

Dipole Calibration for Head Tissue/Pin=250 mW, d=10mm/Zoom Scan (7x7x7)/Cube 0:

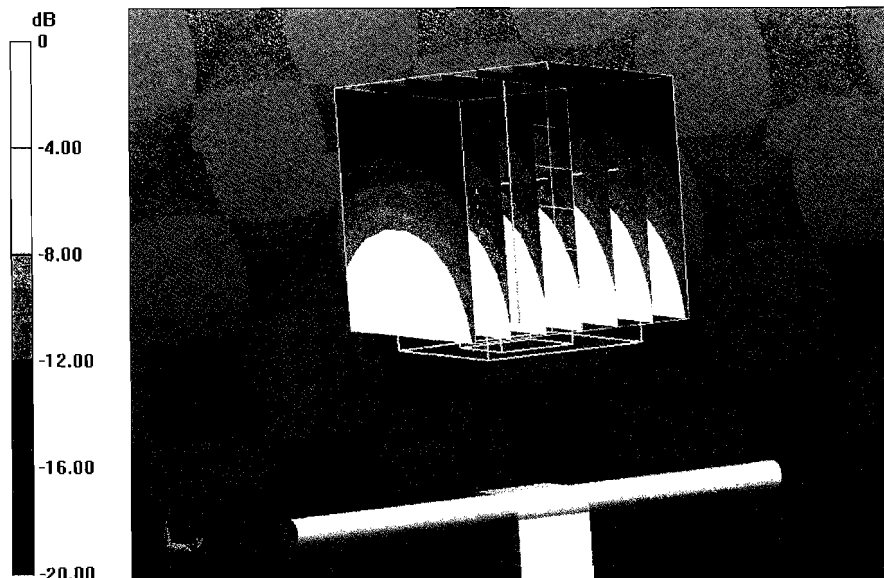
Measurement grid: dx=5mm, dy=5mm, dz=5mm

Reference Value = 97.363 V/m; Power Drift = 0.07 dB

Peak SAR (extrapolated) = 17.9 W/kg

SAR(1 g) = 9.97 W/kg; SAR(10 g) = 5.24 W/kg

Maximum value of SAR (measured) = 12.3 W/kg



0 dB = 12.3 W/kg = 10.90 dBW/kg

Impedance Measurement Plot for Head TSL

6 Dec 2012 12:59:53

CH1 S11 1 U FS 1: 51.367 Ω 6.6406 Ω 556.26 μ H 1 900.000 000 MHz

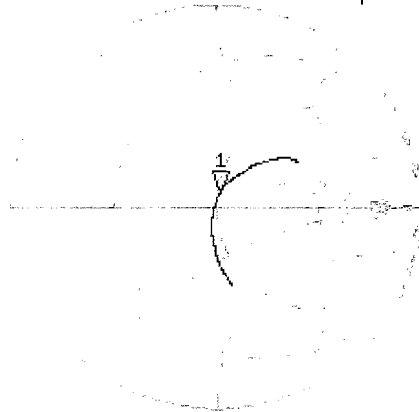
*

Del

Cor

Avg
16

H1d

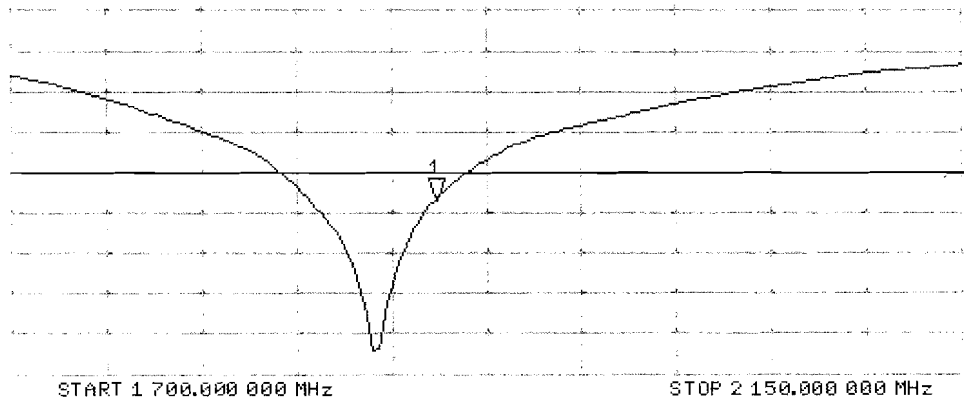


CH2 S11 LOG 5 dB/REF -20 dB 1:-23.512 dB 1 900.000 000 MHz

Cor

Avg
16

H1d



Test Laboratory: SPEAG, Zurich, Switzerland

DUT: Dipole 1900 MHz; Type: D1900V2; Serial: D1900V2 - SN: 5d116

Communication System: CW; Frequency: 1900 MHz

Medium parameters used: $f = 1900$ MHz; $\sigma = 1.52$ mho/m; $\epsilon_r = 52.2$; $\rho = 1000$ kg/m³

Phantom section: Flat Section

Measurement Standard: DASY5 (IEEE/IEC/ANSI C63.19-2007)

DASY52 Configuration:

- Probe: ES3DV3 - SN3205; ConvF(4.62, 4.62, 4.62); Calibrated: 30.12.2011;
- Sensor-Surface: 3mm (Mechanical Surface Detection)
- Electronics: DAE4 Sn601; Calibrated: 27.06.2012
- Phantom: Flat Phantom 5.0 (back); Type: QD000P50AA; Serial: 1002
- DASY52 52.8.3(988); SEMCAD X 14.6.7(6848)

Dipole Calibration for Body Tissue/Pin=250 mW, d=10mm/Zoom Scan (7x7x7)/Cube 0:

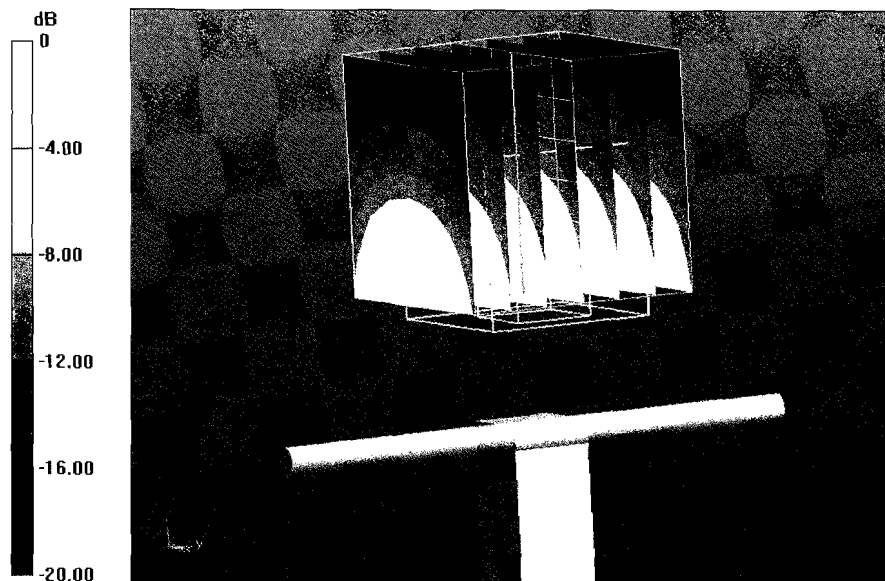
Measurement grid: dx=5mm, dy=5mm, dz=5mm

Reference Value = 95.415 V/m; Power Drift = 0.07 dB

Peak SAR (extrapolated) = 17.7 W/kg

SAR(1 g) = 10.1 W/kg; SAR(10 g) = 5.31 W/kg

Maximum value of SAR (measured) = 12.7 W/kg



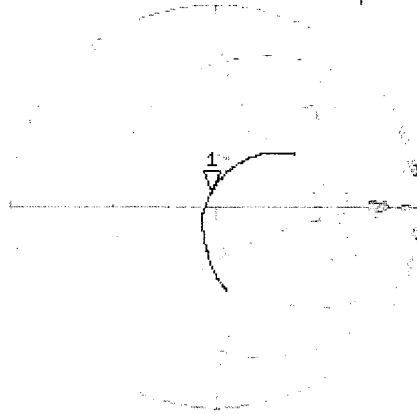
0 dB = 12.7 W/kg = 11.04 dBW/kg

Impedance Measurement Plot for Body TSL

6 Dec 2012 12:59:21

CH1 S11 1 U FS 1: 47.375 Ω 6.6836 Ω 559.86 μ H 1 900.000 000 MHz

*
Del
Cor



Avg
16

H1d

CH2 S11 LQ6 5 dB/REF -20 dB 1: -22.668 dB 1 900.000 000 MHz

Cor

Avg
16

H1d

START 1 700.000 000 MHz

STOP 2 150.000 000 MHz

Appendix F – Phantom Calibration Data Sheets

Zeughausstrasse 43, 8004 Zurich, Switzerland
 Phone +41 44 245 9700, Fax +41 44 245 9779
 info@speag.com, http://www.speag.com

Certificate of Conformity / First Article Inspection

| | |
|--------------|---|
| Item | Oval Flat Phantom ELI 4.0 |
| Type No | QD OVA 001 B |
| Series No | 1003 and higher |
| Manufacturer | Untersee Composites Knebelstrasse 8 CH-8268 Mannenbach, Switzerland |

Tests

Complete tests were made on the prototype units QD OVA 001 AA 1001, QD OVA 001 AB 1002, pre-series units QD OVA 001 BA 1003-1005 as well as on the series units QD OVA 001 BB, 1006 ff.

| Test | Requirement | Details | Units tested |
|----------------------|---|---|--------------------------------------|
| Material thickness | Compliant with the standard requirements | Bottom plate: 2.0mm +/- 0.2mm | all |
| Material parameters | Dielectric parameters for required frequencies | < 6 GHz: Rel. permittivity = 4 +/-1, Loss tangent ≤ 0.05 | Material sample |
| Material resistivity | The material has been tested to be compatible with the liquids defined in the standards if handled and cleaned according to the instructions. | DGBE based simulating liquids. Observe Technical Note for material compatibility. | Equivalent phantoms, Material sample |
| Shape | Thickness of bottom material, Internal dimensions, Sagging compatible with standards from minimum frequency | Bottom elliptical 600 x 400 mm Depth 190 mm, Shape is within tolerance for filling height up to 155 mm, Eventual sagging is reduced or eliminated by support via DUT | Prototypes, Sample testing |

Standards

- [1] CENELEC EN 50361-2001, « Basic standard for the measurement of the Specific Absorption Rate related to human exposure to electromagnetic fields from mobile phones (300 MHz – 3 GHz) », July 2001
- [2] IEEE 1528-2003, "Recommended Practice for Determining the Peak Spatial-Average Specific Absorption Rate (SAR) in the Human Head from Wireless Communications Devices: Measurement Techniques, December 2003
- [3] IEC 62209 – 1, "Specific Absorption Rate (SAR) in the frequency range of 300 MHz to 3 GHz – Measurement Procedure, Part 1: Hand-held mobile wireless communication devices", February 2005
- [4] IEC 62209 – 2, Draft, "Human Exposure to Radio Frequency Fields from Handheld and Body-Mounted Wireless Communication Devices – Human models, Instrumentation and Procedures – Part 2: Procedure to determine the Specific Absorption Rate (SAR) in the head and body for 30 MHz to 6 GHz Handheld and Body-Mounted Devices used in close proximity to the Body.", February 2005
- [5] OET Bulletin 65, Supplement C, "Evaluating Compliance with FCC Guidelines for Human Exposure to Radiofrequency Electromagnetic Fields", Edition January 2001

Based on the tests above, we certify that this item is in compliance with the standards [1] to [5] if operated according to the specific requirements and considering the thickness. The dimensions are fully compliant with [4] from 30 MHz to 6 GHz. For the other standards, the minimum lower frequency limit is limited due to the dimensional requirements ([1]: 450 MHz, [2]: 300 MHz, [3]: 800 MHz, [5]: 375 MHz) and possibly further by the dimensions of the DUT.

Date 28.4.2008

Signature / Stamp

s p e a g
 Schmid & Partner Engineering AG
 Zeughausstrasse 43, 8004 Zurich, Switzerland
 Phone +41 44 245 9700, Fax +41 44 245 9779
 info@speag.com; http://www.speag.com