

System Check_Body_2450MHz_101014

DUT: Dipole 2450 MHz

Communication System: CW; Frequency: 2450 MHz; Duty Cycle: 1:1

Medium: MSL_2450_101014 Medium parameters used: $f = 2450$ MHz; $\sigma = 1.94$ mho/m; $\epsilon_r = 54$; $\rho = 1000$ kg/m³

Ambient Temperature : 23.3 °C; Liquid Temperature : 21.2 °C

DASY5 Configuration:

- Probe: EX3DV4 - SN3697; ConvF(6.84, 6.84, 6.84); Calibrated: 11/23/2009
- Sensor-Surface: 4mm (Mechanical Surface Detection)
- Electronics: DAE4 Sn1210; Calibrated: 2009/11/16
- Phantom: SAM2; Type: SAM; Serial: TP-1479
- Measurement SW : DASY5, V5.2 Build 162; SEMCAD X Version 14.0 Build 57

Pin=100mW/Area Scan (91x91x1): Measurement grid: dx=10mm, dy=10mm

Maximum value of SAR (interpolated) = 6.59 mW/g

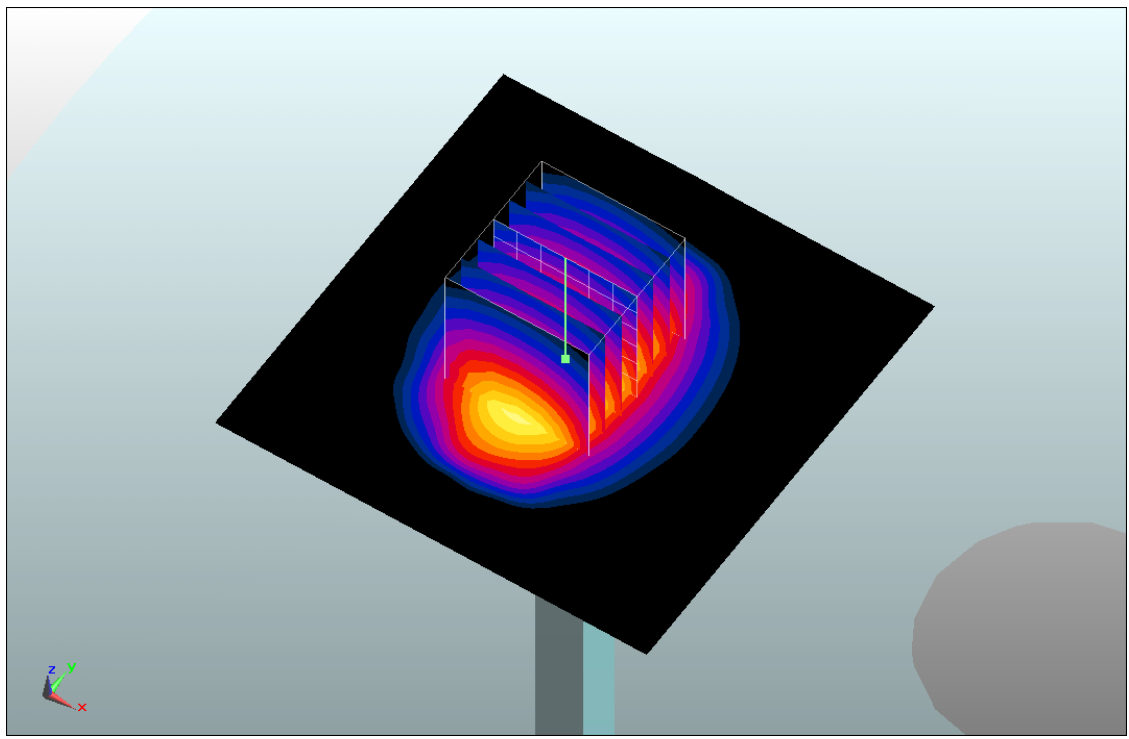
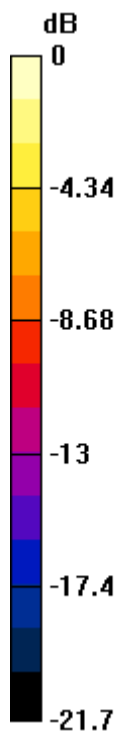
Pin=100mW/Zoom Scan (7x7x7)/Cube 0: Measurement grid: dx=5mm, dy=5mm, dz=5mm

Reference Value = 55.9 V/m; Power Drift = -0.00324 dB

Peak SAR (extrapolated) = 11.6 W/kg

SAR(1 g) = 5.33 mW/g; SAR(10 g) = 2.34 mW/g

Maximum value of SAR (measured) = 6.27 mW/g



0 dB = 6.27mW/g