

Optional Equipment Installation

Follow the instructions below to install IX-5930 and IX-5910 Optional Equipment:

IX-59BTINF Bluetooth Headset Adapter Installation

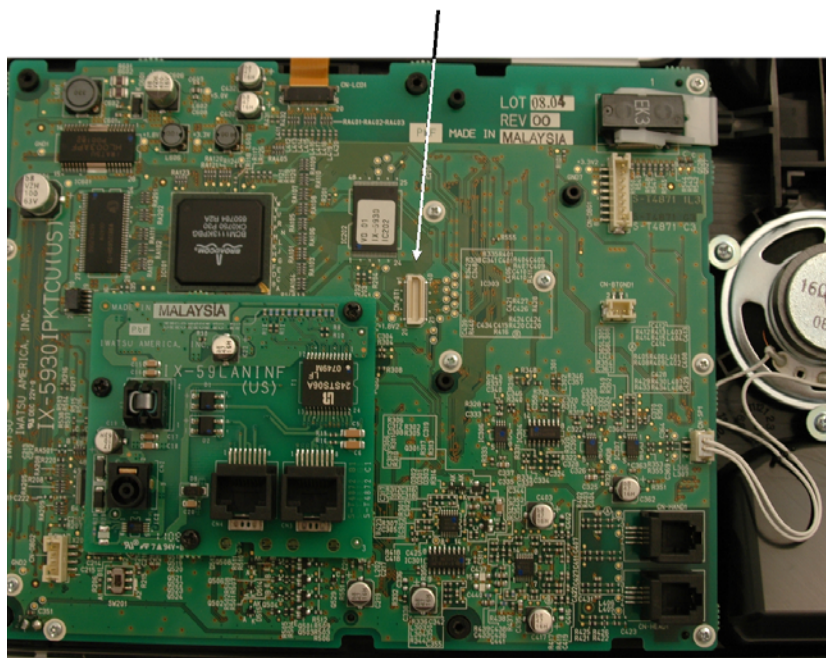
(The IX-5810 Digital Key Telephone requires the IX-58BTINF)

This unit allows the connection of an IX-5930 or IX-5910 IP Key Telephone to a Bluetooth headset.

To add an IX-59BTINF unit to an IX-5930 or IX-5910 IP Key Telephone:

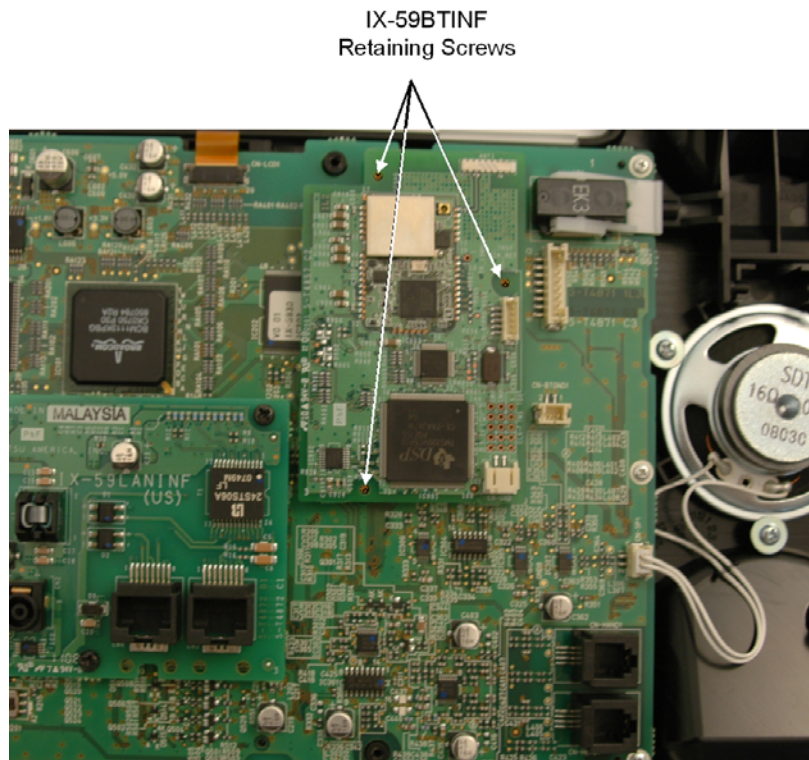
1. Turn the IX-5930/IX-5910 Telephone so that the bottom (pedestal) of the telephone is facing up and disconnect all cords (Headset and Handset).
2. Using a Phillips head screwdriver, remove the six screws from the bottom of the IX-5930/IX-5910 Telephone. Carefully, place the screws aside.
3. With the six screws removed, separate the upper and lower housing from the telephone.

CN-BT1 Connector



4. Insert the IX-59BTINF CN902 connector into the CN-BT1 connector on the IX-5930 motherboard (IX-5930IPKTCU) or the IX-5910 motherboard (IX-5910IPKTCU).

- When the IX-59BTINF board is connected, insert the three retaining screws (provided with the IX-59BTINF) to secure the IX-59BTINF to the IX-5930IPKTCU/ IX-5910IPKTCU motherboard.



- Reattach the top and bottom sections of the telephone using the Phillips head screws set aside from the second step.
- Reconnect all cords.

NOTE: For instruction on pairing and connecting Bluetooth Headsets please see Bluetooth Headset Setup on page 88.