

Figure C.13: SAR testing results for the A3185 at 2480 MHz core 1



Measurement Report for A3185, BACK, Custom Band, CW, Channel 2480000 (2480.000 MHz)

Device Under Test Properties

model, Manufacturer	Dimensions [mm]	IMEI	DUT Type
A3185,	315.0 x 225.0 x 15.0		Laptop

Exposure Conditions

Phantom Section, TSL	Position, Test Distance [mm]	Band	Group, UID	Frequency [MHz], Channel Number	Conversion Factor	TSL Conductivity [S/m]	TSL Permittivity
at, HSL	BACK, 0.00	Custom Band	CW, 0--	2480.0, 2480000	7.22	1.83	39.4

Hardware Setup

Phantom	TSL, Measured Date	Probe, Calibration Date	DAE, Calibration Date
ELI V8.0 (20deg probe tilt) - 2102	HBBL-600-10000 DAK 3.5 Head ELI 20.66 deg.C 2024-Sep-09 SYS3 B3.prn, 2024-Sep-09	EX3DV4 - SN7804, 2024-08-14	DAE4ip Sn1786, 2024-08-07

Scans Setup

	Area Scan	Zoom Scan
Grid Extents [mm]	140.0 x 200.0	30.0 x 30.0 x 30.0
Grid Steps [mm]	10.0 x 10.0	5.0 x 5.0 x 1.5
Sensor Surface [mm]	3.0	1.4
Graded Grid	n/a	Yes
Grading Ratio	n/a	1.5
MAIA	Y	Y
Surface Detection	VMS + 6p	VMS + 6p
Scan Method	Measured	Measured

Measurement Results

	Area Scan	Zoom Scan
Date	2024-09-10, 18:32	2024-09-10, 18:43
psSAR1g [W/Kg]	0.119	0.116
psSAR10g [W/Kg]	0.058	0.053
Power Drift [dB]	-0.01	-0.02
Power Scaling	Disabled	Disabled
Scaling Factor [dB]		
TSL Correction	Positive only	Positive only
M2/M1 [%]		73.3
Dist 3dB Peak [mm]		7.1

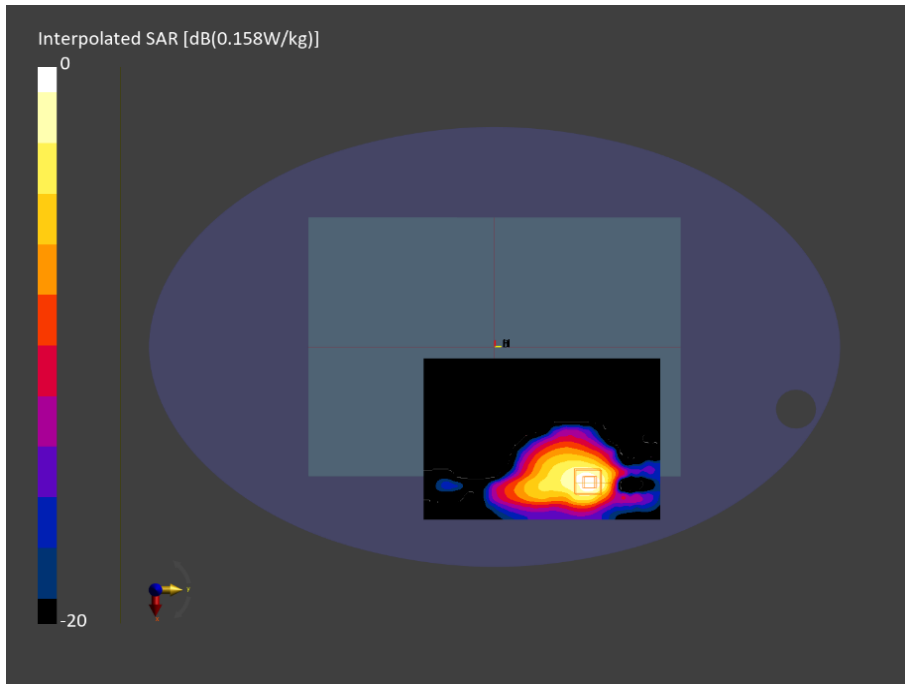


Figure C.14: SAR testing results for the A3185 at 2480 MHz core 2



Measurement Report for A3185, BACK, Custom Band, CW, Channel 2440000 (2440.0 MHz)

Device Under Test Properties

model, Manufacturer	Dimensions [mm]	IMEI	DUT Type
A3185,	315.0 x 225.0 x 15.0		Laptop

Exposure Conditions

Phantom Section, TSL	Position, Test Distance [mm]	Band	Group, UID	Frequency [MHz], Channel Number	Conversion Factor	TSL Conductivity [S/m]	TSL Permittivity
Flat, HSL	BACK, 0.00	Custom Band	CW, 0--	2440.0, 2440000	7.22	1.79	39.4

Hardware Setup

Phantom	TSL, Measured Date	Probe, Calibration Date	DAE, Calibration Date
ELI V8.0 (20deg probe tilt) - 2102	HBBL-600-10000 DAK 3.5 Head ELI 20.66 deg.C 2024-Sep-09 SYS3 B3.prn, 2024-Sep-09	EX3DV4 - SN7804, 2024-08-14	DAE4ip Sn1786, 2024-08-07

Scans Setup

	Area Scan	Zoom Scan
Grid Extents [mm]	140.0 x 200.0	30.0 x 30.0 x 30.0
Grid Steps [mm]	10.0 x 10.0	5.0 x 5.0 x 1.5
Sensor Surface [mm]	3.0	1.4
Graded Grid	n/a	Yes
Grading Ratio	n/a	1.5
MAIA	N/A	N/A
Surface Detection	VMS + 6p	VMS + 6p
Scan Method	Measured	Measured

Measurement Results

	Area Scan	Zoom Scan
Date	2024-09-11, 01:25	2024-09-11, 01:37
psSAR1g [W/Kg]	0.262	0.268
psSAR10g [W/Kg]	0.131	0.125
Power Drift [dB]	0.00	-0.05
Power Scaling	Disabled	Disabled
Scaling Factor [dB]		
TSL Correction	Positive only	Positive only
M2/M1 [%]		74.5
Dist 3dB Peak [mm]		8.3

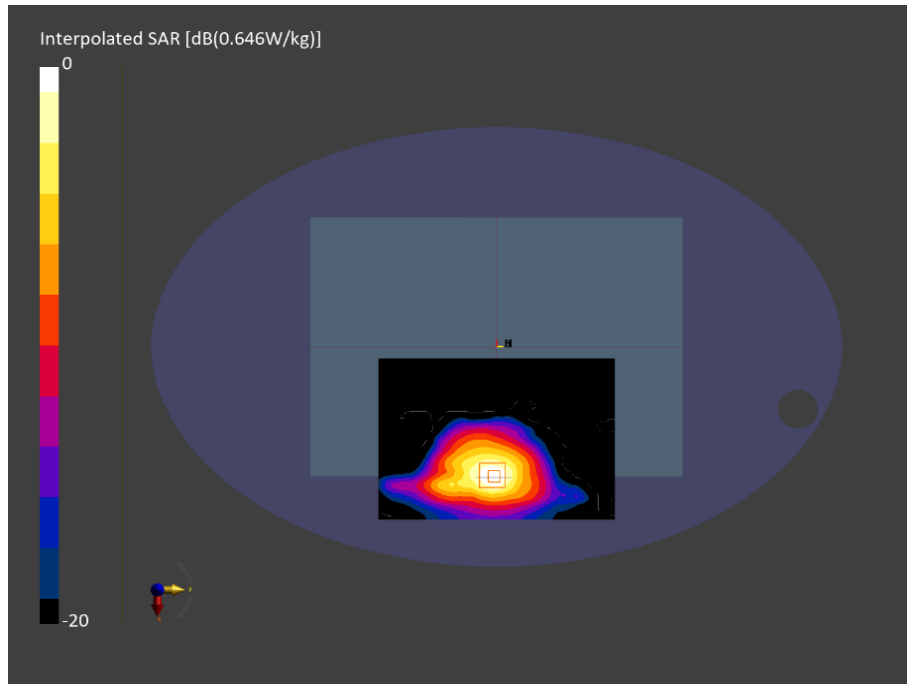


Figure C.15: SAR testing results for the A3185 at 2440 MHz core 0



Measurement Report for A3185, BACK, Custom Band, CW, Channel 2480000 (2480.0 MHz)

Device Under Test Properties

Model, Manufacturer	Dimensions [mm]	IMEI	DUT Type
A3185,	315.0 x 225.0 x 15.0		Laptop

Exposure Conditions

Phantom Section, TSL	Position, Test Distance [mm]	Band	Group, UID	Frequency [MHz], Channel Number	Conversion Factor	TSL Conductivity [S/m]	TSL Permittivity
Flat, HSL	BACK, 0.00	Custom Band	CW, 0--	2480.0, 2480000	7.22	1.83	39.4

Hardware Setup

Phantom	TSL, Measured Date	Probe, Calibration Date	DAE, Calibration Date
ELI V8.0 (20deg probe tilt) - 2102	HBBL-600-10000 DAK 3.5 Head ELI 20.66 deg.C 2024-Sep-09 SYS3 B3.prn, 2024-Sep-09	EX3DV4 - SN7804, 2024-08-14	DAE4ip Sn1786, 2024-08-07

Scans Setup

	Area Scan	Zoom Scan
Grid Extents [mm]	140.0 x 200.0	30.0 x 30.0 x 30.0
Grid Steps [mm]	10.0 x 10.0	5.0 x 5.0 x 1.5
Sensor Surface [mm]	3.0	1.4
Graded Grid	n/a	Yes
Grading Ratio	n/a	1.5
MAIA	Y	N/A
Surface Detection	VMS + 6p	VMS + 6p
Scan Method	Measured	Measured

Measurement Results

	Area Scan	Zoom Scan
Date	2024-09-11, 03:10	2024-09-11, 03:23
psSAR1g [W/Kg]	0.197	0.193
SAR10g [W/Kg]	0.096	0.088
Power Drift [dB]	0.04	0.04
Power Scaling	Disabled	Disabled
Scaling Factor [dB]		
TSL Correction	Positive only	Positive only
M2/M1 [%]		74.7
Dist 3dB Peak [mm]		8.5

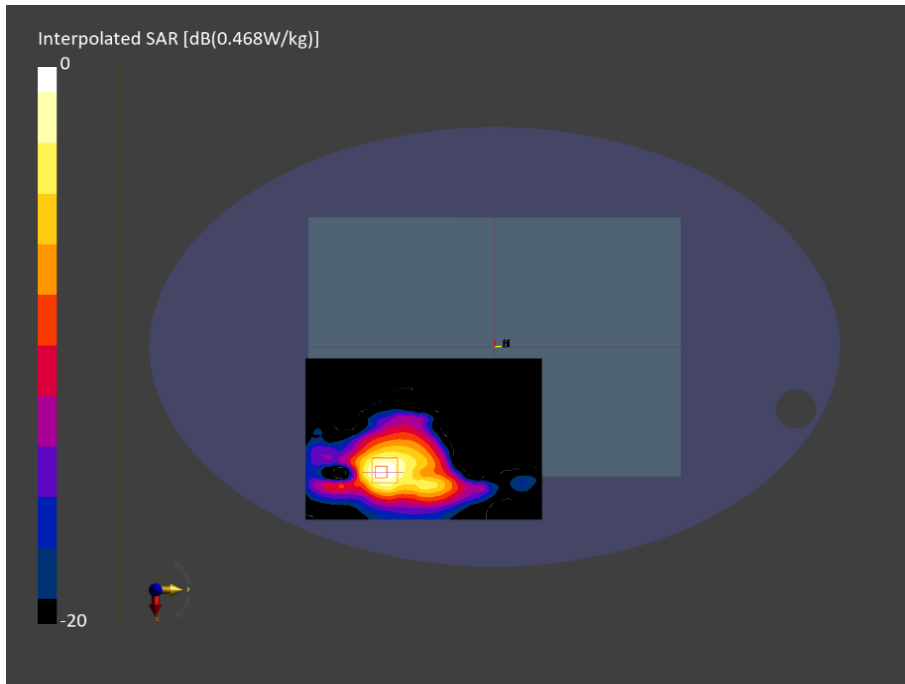


Figure C.16: SAR testing results for the A3185 at 2480 MHz core 1



Measurement Report for A3185, BACK, WLAN 2.4GHz, IEEE 802.11b WiFi 2.4 GHz (DSSS, 1 Mbps, 99pc duty cycle), Channel 6 (2437.0 MHz)

Device Under Test Properties

Model, Manufacturer	Dimensions [mm]	IMEI	DUT Type
A3185,	315.0 x 225.0 x 15.0		Laptop

Exposure Conditions

Phantom Section, TSL	Position, Test Distance [mm]	Band	Group, UID	Frequency [MHz], Channel Number	Conversion Factor	TSL Conductivity [S/m]	TSL Permittivity
Flat, HSL	BACK, 0.00	WLAN 2.4GHz	WLAN, 10415-AAA	2437.0, 6	7.22	1.77	39.0

Hardware Setup

Phantom	TSL, Measured Date	Probe, Calibration Date	DAE, Calibration Date
ELI V8.0 (20deg probe tilt) - 2102	HBBL-600-10000 DAK 3.5 Head ELI 21.35 deg.C 2024-Sep-11 SYS3 B3.prn, 2024-Sep-11	EX3DV4 - SN7804, 2024-08-14	DAE4ip Sn1786, 2024-08-07

Scans Setup

	Area Scan	Zoom Scan
Grid Extents [mm]	140.0 x 200.0	30.0 x 30.0 x 30.0
Grid Steps [mm]	10.0 x 10.0	5.0 x 5.0 x 1.5
Sensor Surface [mm]	3.0	1.4
Graded Grid	n/a	Yes
Grading Ratio	n/a	1.5
MAIA	N/A	N/A
Surface Detection	VMS + 6p	VMS + 6p
Scan Method	Measured	Measured

Measurement Results

	Area Scan	Zoom Scan
Date	2024-09-11, 18:26	2024-09-11, 18:38
psSAR1g [W/Kg]	0.684	0.692
psSAR10g [W/Kg]	0.335	0.318
Power Drift [dB]	-0.01	-0.02
Power Scaling	Disabled	Disabled
Scaling Factor [dB]		
TSL Correction	Positive only	Positive only
M2/M1 [%]		75.0
Dist 3dB Peak [mm]		9.0

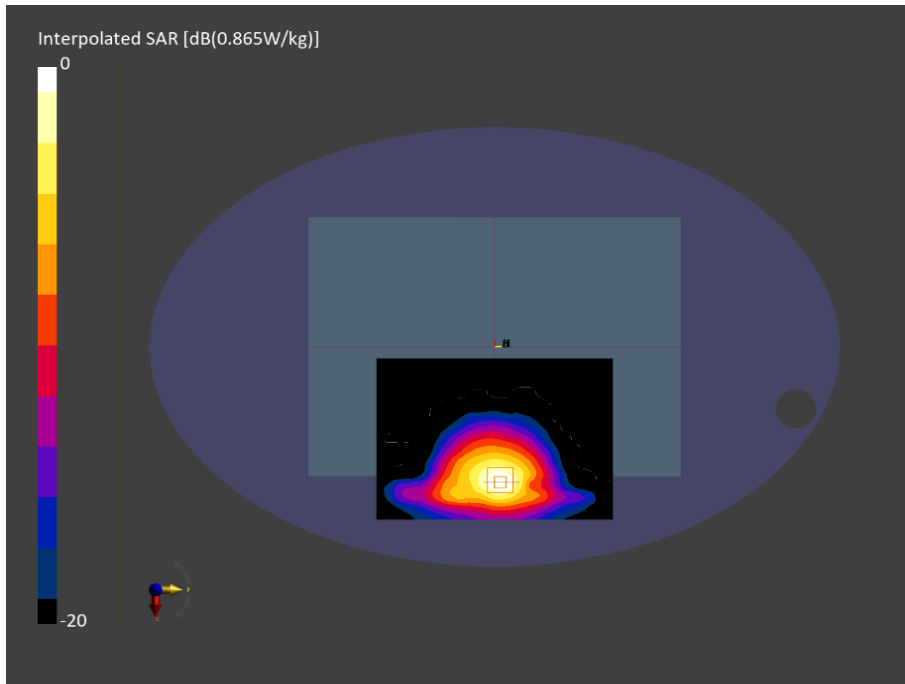


Figure C.17: SAR testing results for the A3185 at 2437 MHz core 0



Measurement Report for A3185, BACK, WLAN 2.4GHz, IEEE 802.11g WiFi 2.4 GHz (ERP-OFDM, 6 Mbps, 99pc duty cycle), Channel 10 (2457.0 MHz)

Device Under Test Properties

Model, Manufacturer	Dimensions [mm]	IMEI	DUT Type
A3185,	315.0 x 225.0 x 15.0		Laptop

Exposure Conditions

Phantom Section, TSL	Position, Test Distance [mm]	Band	Group, UID	Frequency [MHz], Channel Number	Conversion Factor	TSL Conductivity [S/m]	TSL Permittivity
Flat, HSL	BACK, 0.00	WLAN 2.4GHz	WLAN, 10416-AAA	2457.0, 10	7.22	1.79	38.9

Hardware Setup

Phantom	TSL, Measured Date	Probe, Calibration Date	DAE, Calibration Date
ELI V8.0 (20deg probe tilt) - 2102	HBBL-600-10000 DAK 3.5 Head ELI 21.35 deg.C 2024-Sep-11 SYS3 B3.prn, 2024-Sep-11	EX3DV4 - SN7804, 2024-08-14	DAE4ip Sn1786, 2024-08-07

Scans Setup

	Area Scan	Zoom Scan
Grid Extents [mm]	140.0 x 200.0	30.0 x 30.0 x 30.0
Grid Steps [mm]	10.0 x 10.0	5.0 x 5.0 x 1.5
Sensor Surface [mm]	3.0	1.4
Graded Grid	n/a	Yes
Grading Ratio	n/a	1.5
MAIA	N/A	N/A
Surface Detection	VMS + 6p	VMS + 6p
Scan Method	Measured	Measured

Measurement Results

	Area Scan	Zoom Scan
Date	2024-09-11, 20:04	2024-09-11, 20:15
psSAR1g [W/Kg]	0.756	0.766
psSAR10g [W/Kg]	0.369	0.352
Power Drift [dB]	0.01	0.01
Power Scaling	Disabled	Disabled
Scaling Factor [dB]		
TSL Correction	Positive only	Positive only
M2/M1 [%]		74.9
Dist 3dB Peak [mm]		9.0

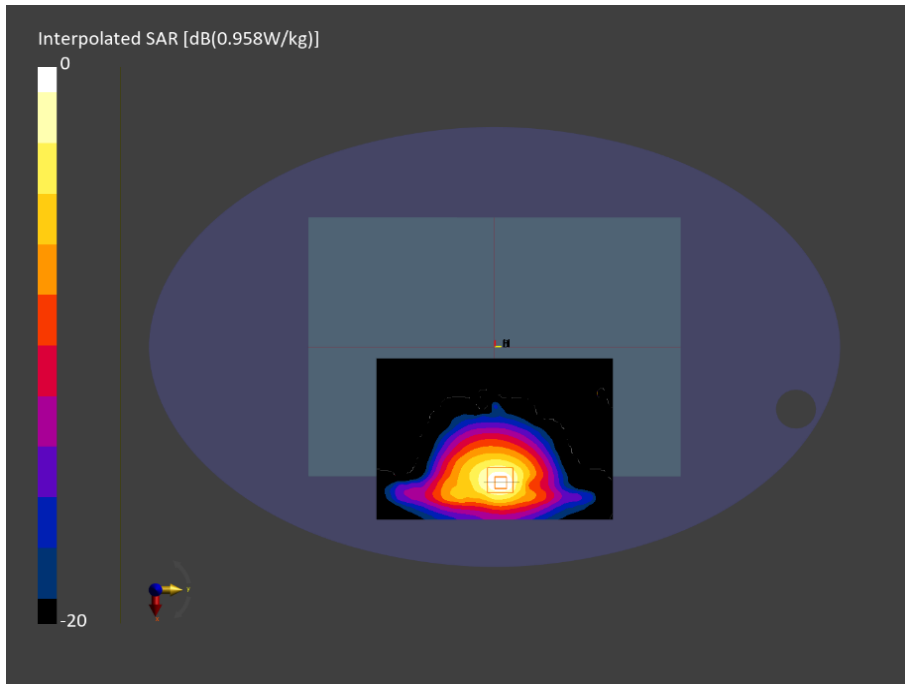


Figure C.18: SAR testing results for the A3185 at 2457 MHz core 0



Measurement Report for A3185, BACK, WLAN 2.4GHz, IEEE 802.11b WiFi 2.4 GHz (DSSS, 1 Mbps, 99pc duty cycle), Channel 11 (2462.0 MHz)

Device Under Test Properties

Model, Manufacturer	Dimensions [mm]	IMEI	DUT Type
A3185,	315.0 x 225.0 x 15.0		Laptop

Exposure Conditions

Phantom Section, TSL	Position, Test Distance [mm]	Band	Group, UID	Frequency [MHz], Channel Number	Conversion Factor	TSL Conductivity [S/m]	TSL Permittivity
Flat, HSL	BACK, 0.00	WLAN 2.4GHz	WLAN, 10415-AAA	2462.0, 11	7.22	1.79	38.9

Hardware Setup

Phantom	TSL, Measured Date	Probe, Calibration Date	DAE, Calibration Date
ELI V8.0 (20deg probe tilt) - 2102	HBBL-600-10000 DAK 3.5 Head ELI 21.35 deg.C 2024-Sep-11 SYS3 B3.prn, 2024-Sep-11	EX3DV4 - SN7804, 2024-08-14	DAE4ip Sn1786, 2024-08-07

Scans Setup

	Area Scan	Zoom Scan
Grid Extents [mm]	140.0 x 200.0	30.0 x 30.0 x 30.0
Grid Steps [mm]	10.0 x 10.0	5.0 x 5.0 x 1.5
Sensor Surface [mm]	3.0	1.4
Graded Grid	n/a	Yes
Grading Ratio	n/a	1.5
MAIA	N/A	N/A
Surface Detection	VMS + 6p	VMS + 6p
Scan Method	Measured	Measured

Measurement Results

	Area Scan	Zoom Scan
Date	2024-09-11, 21:18	2024-09-11, 21:30
psSAR1g [W/Kg]	0.529	0.530
psSAR10g [W/Kg]	0.259	0.240
Power Drift [dB]	0.01	0.01
Power Scaling	Disabled	Disabled
Scaling Factor [dB]		
TSL Correction	Positive only	Positive only
M2/M1 [%]		74.1
Dist 3dB Peak [mm]		9.0

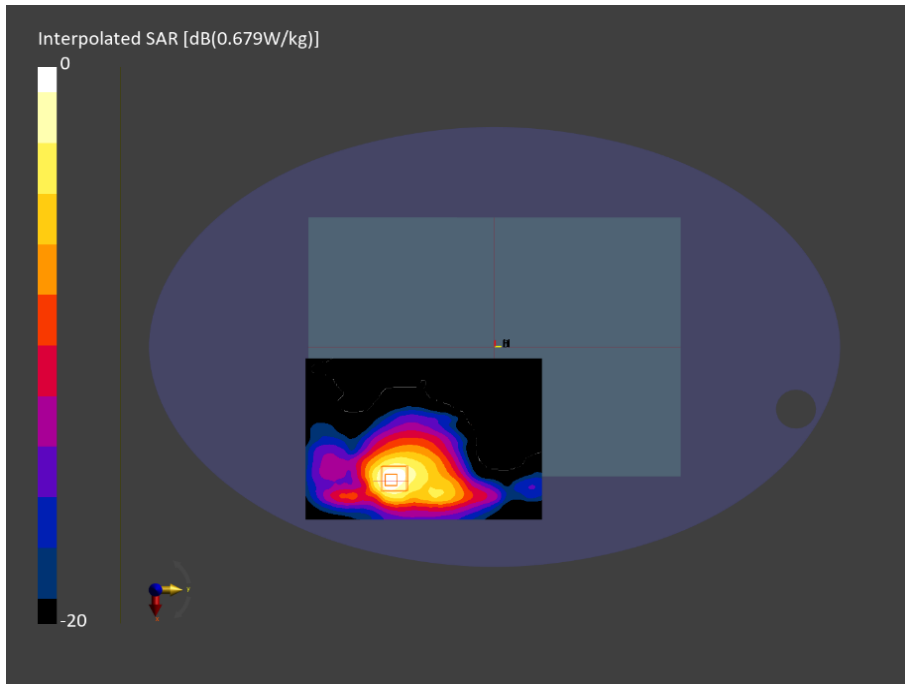


Figure C.19: SAR testing results for the A3185 at 2462 MHz core 1



Measurement Report for A3185, BACK, WLAN 2.4GHz, IEEE 802.11g WiFi 2.4 GHz (ERP-OFDM, 6 Mbps, 99pc duty cycle), Channel 10 (2457.0 MHz)

Device Under Test Properties

Model, Manufacturer	Dimensions [mm]	IMEI	DUT Type
A3185,	315.0 x 225.0 x 15.0		Laptop

Exposure Conditions

Phantom Section, TSL	Position, Test Distance [mm]	Band	Group, UID	Frequency [MHz], Channel Number	Conversion Factor	TSL Conductivity [S/m]	TSL Permittivity
Flat, HSL	BACK, 0.00	WLAN 2.4GHz	WLAN, 10416-AAA	2457.0, 10	7.22	1.79	38.9

Hardware Setup

Phantom	TSL, Measured Date	Probe, Calibration Date	DAE, Calibration Date
ELI V8.0 (20deg probe tilt) - 2102	HBBL-600-10000 DAK 3.5 Head ELI 21.35 deg.C 2024-Sep-11 SYS3 B3.prn, 2024-Sep-11	EX3DV4 - SN7804, 2024-08-14	DAE4ip Sn1786, 2024-08-07

Scans Setup

	Area Scan	Zoom Scan
Grid Extents [mm]	140.0 x 200.0	30.0 x 30.0 x 30.0
Grid Steps [mm]	10.0 x 10.0	5.0 x 5.0 x 1.5
Sensor Surface [mm]	3.0	1.4
Graded Grid	n/a	Yes
Grading Ratio	n/a	1.5
MAIA	N/A	N/A
Surface Detection	VMS + 6p	VMS + 6p
Scan Method	Measured	Measured

Measurement Results

	Area Scan	Zoom Scan
Date	2024-09-12, 01:16	2024-09-12, 01:29
psSAR1g [W/Kg]	0.611	0.612
psSAR10g [W/Kg]	0.299	0.279
Power Drift [dB]	0.02	-0.00
Power Scaling	Disabled	Disabled
Scaling Factor [dB]		
TSL Correction	Positive only	Positive only
M2/M1 [%]		74.9
Dist 3dB Peak [mm]		8.5

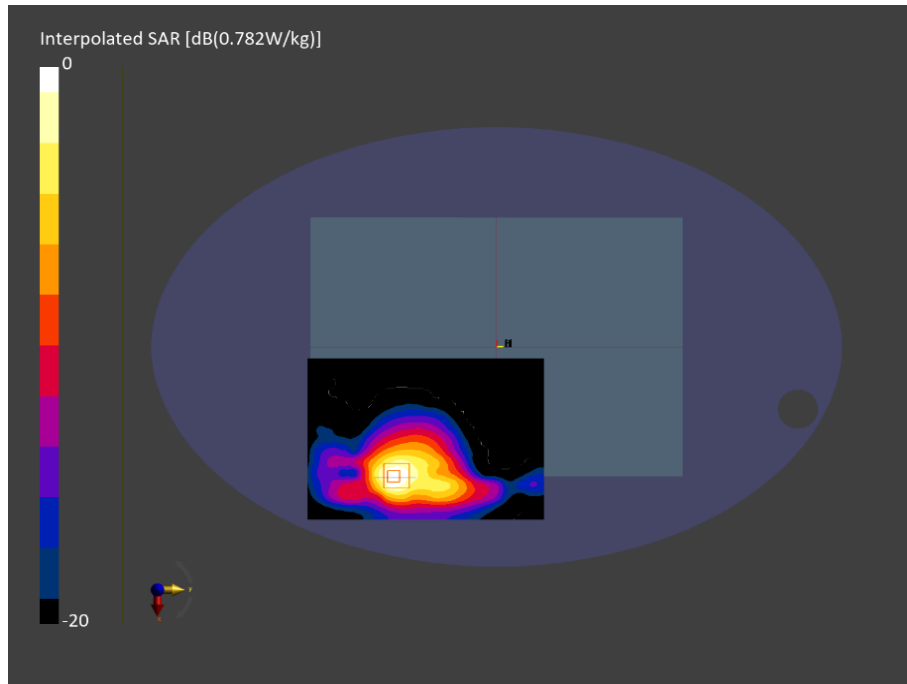


Figure C.20: SAR testing results for the A3185 at 2457 MHz core 1



Measurement Report for A3185, BACK, WLAN 2.4GHz, IEEE 802.11n (HT Mixed, 6.5 Mbps, BPSK), Channel 10 (2457.0 MHz)

Device Under Test Properties

Model, Manufacturer	Dimensions [mm]	IMEI	DUT Type
A3185,	315.0 x 225.0 x 15.0		Laptop

Exposure Conditions

Phantom Section, TSL	Position, Test Distance [mm]	Band	Group, UID	Frequency [MHz], Channel Number	Conversion Factor	TSL Conductivity [S/m]	TSL Permittivity
Flat, HSL	BACK, 0.00	WLAN 2.4GHz	WLAN, 10196-CAD	, 10	7.22	1.79	38.9

Hardware Setup

Phantom	TSL, Measured Date	Probe, Calibration Date	DAE, Calibration Date
ELI V8.0 (20deg probe tilt) - 2102	HBBL-600-10000 DAK 3.5 Head ELI 21.35 deg.C 2024-Sep-11 SYS3 B3.prn, 2024-Sep-11	EX3DV4 - SN7804, 2024-08-14	DAE4ip Sn1786, 2024-08-07

Scans Setup

	Area Scan	Zoom Scan	Zoom Scan
Grid Extents [mm]	x 260.0	30.0 x 30.0 x 30.0	30.0 x 30.0 x 30.0
Grid Steps [mm]	10.0 x 10.0	5.0 x 5.0 x 1.5	5.0 x 5.0 x 1.5
Sensor Surface [mm]	3.0	1.4	1.4
Graded Grid	n/a	Yes	Yes
Grading Ratio	n/a	1.5	1.5
MAIA	N/A	N/A	N/A
Surface Detection	VMS + 6p	VMS + 6p	VMS + 6p
Scan Method	Measured	Measured	Measured

Measurement Results

	Area Scan	Zoom Scan	Zoom Scan
Date	2024-09-12, 03:18	2024-09-12, 03:29	2024-09-12, 03:41
psSAR1g [W/Kg]	0.745	0.798	0.588
psSAR10g [W/Kg]	0.376	0.367	0.269
Power Drift [dB]	-0.01	-0.02	-0.02
Power Scaling	Disabled	Disabled	Disabled
Scaling Factor [dB]			
TSL Correction	Positive only	Positive only	Positive only
M2/M1 [%]		74.8	74.8
Dist 3dB Peak [mm]		9.3	9.3

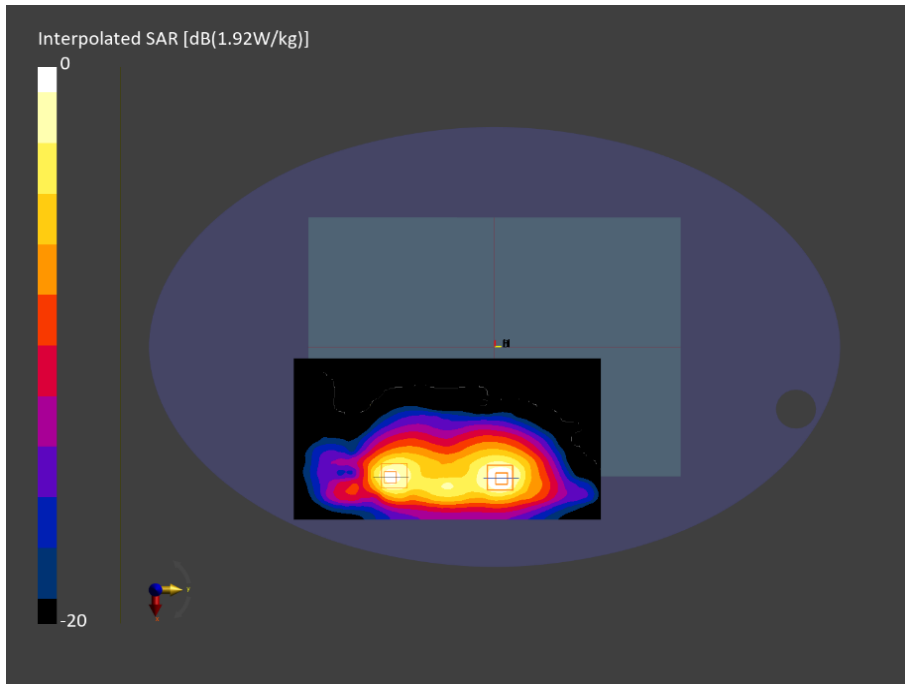


Figure C.21: SAR testing results for the A3185 at 2457 MHz core 0 & 1



Measurement Report for A3185, BACK, U-NII-1, U-NII-2A, IEEE 802.11ac WiFi (80MHz, MCS0, 99pc duty cycle), Channel 42 (5210.0 MHz)

Device Under Test Properties

Model, Manufacturer	Dimensions [mm]	IMEI	DUT Type
A3185,	315.0 x 225.0 x 15.0		Laptop

Exposure Conditions

Phantom Section, TSL	Position, Test Distance [mm]	Band	Group, UID	Frequency [MHz], Channel Number	Conversion Factor	TSL Conductivity [S/m]	TSL Permittivity
Flat, HSL	BACK, 0.00	U-NII-1, U-NII-2A	WLAN, 10544-AAC	5210.0, 42	5.18	4.46	35.2

Hardware Setup

Phantom	TSL, Measured Date	Probe, Calibration Date	DAE, Calibration Date
ELI V8.0 (20deg probe tilt) - 2202	HBBL-600-10000 DAK 3.5 Head ELI 21.36 deg.C 2024-Sep-11 SYS5 B5.prn, 2024-Sep-11	EX3DV4 - SN7805, 2024-02-14	DAE4ip Sn1785, 2024-02-13

Scans Setup

	Area Scan	Zoom Scan
Grid Extents [mm]	140.0 x 200.0	22.0 x 22.0 x 22.0
Grid Steps [mm]	10.0 x 10.0	4.0 x 4.0 x 1.4
Sensor Surface [mm]	3.0	1.4
Graded Grid	n/a	Yes
Grading Ratio	n/a	1.4
MAIA	Y	N/A
Surface Detection	VMS + 6p	VMS + 6p
Scan Method	Measured	Measured

Measurement Results

	Area Scan	Zoom Scan
Date	2024-09-12, 03:58	2024-09-12, 04:07
psSAR1g [W/Kg]	0.503	0.596
psSAR10g [W/Kg]	0.192	0.202
Power Drift [dB]	0.08	0.01
Power Scaling	Disabled	Disabled
Scaling Factor [dB]		
TSL Correction	Positive only	Positive only
M2/M1 [%]		60.1
Dist 3dB Peak [mm]		8.0

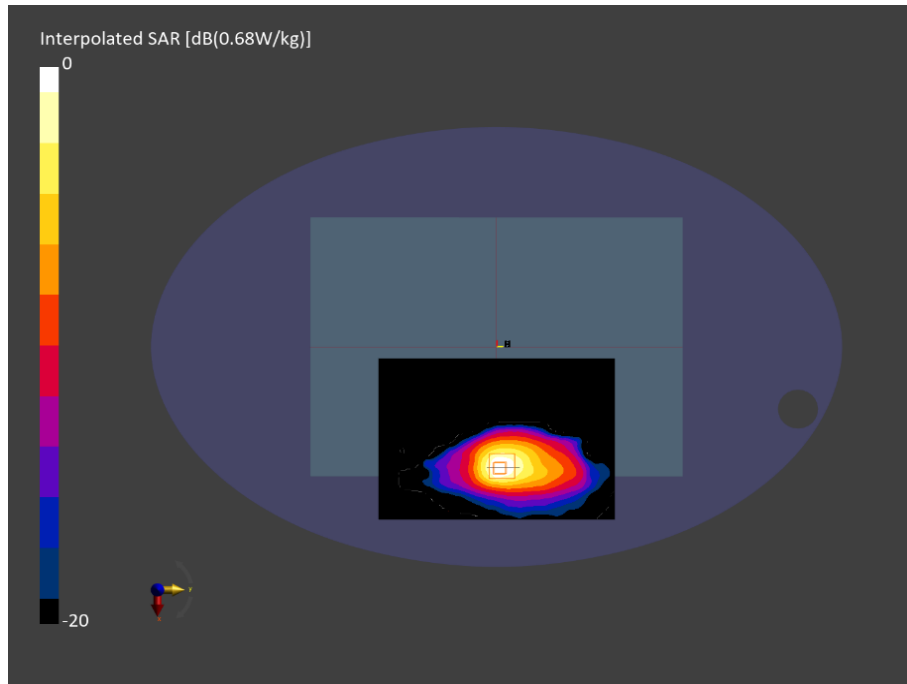


Figure C.22: SAR testing results for the A3185 at 5210 MHz core 0



Measurement Report for A3185, BACK, U-NII-1, U-NII-2A, IEEE 802.11ac WiFi (80MHz, MCS0, 99pc duty cycle), Channel 42 (5210.0 MHz)

Device Under Test Properties

Model, Manufacturer	Dimensions [mm]	IMEI	DUT Type
A3185,	315.0 x 225.0 x 15.0		Laptop

Exposure Conditions

Phantom Section, TSL	Position, Test Distance [mm]	Band	Group, UID	Frequency [MHz], Channel Number	Conversion Factor	TSL Conductivity [S/m]	TSL Permittivity
Flat, HSL	BACK, 0.00	U-NII-1, U-NII-2A	WLAN, 10544-AAC	5210.0, 42	5.18	4.46	35.2

Hardware Setup

Phantom	TSL, Measured Date	Probe, Calibration Date	DAE, Calibration Date
ELI V8.0 (20deg probe tilt) - 2202	HBBL-600-10000 DAK 3.5 Head ELI 21.36 deg.C 2024-Sep-11 SYS5 B5.prn, 2024-Sep-11	EX3DV4 - SN7805, 2024-02-14	DAE4ip Sn1785, 2024-02-13

Scans Setup

	Area Scan	Zoom Scan
Grid Extents [mm]	140.0 x 200.0	22.0 x 22.0 x 22.0
Grid Steps [mm]	10.0 x 10.0	4.0 x 4.0 x 1.4
Sensor Surface [mm]	3.0	1.4
Graded Grid	n/a	Yes
Grading Ratio	n/a	1.4
MAIA	Y	N/A
Surface Detection	VMS + 6p	VMS + 6p
Scan Method	Measured	Measured

Measurement Results

	Area Scan	Zoom Scan
Date	2024-09-12, 04:19	2024-09-12, 04:28
psSAR1g [W/Kg]	0.629	0.704
psSAR10g [W/Kg]	0.236	0.242
Power Drift [dB]	0.05	0.02
Power Scaling	Disabled	Disabled
Scaling Factor [dB]		
TSL Correction	Positive only	Positive only
M2/M1 [%]		61.6
Dist 3dB Peak [mm]		8.4

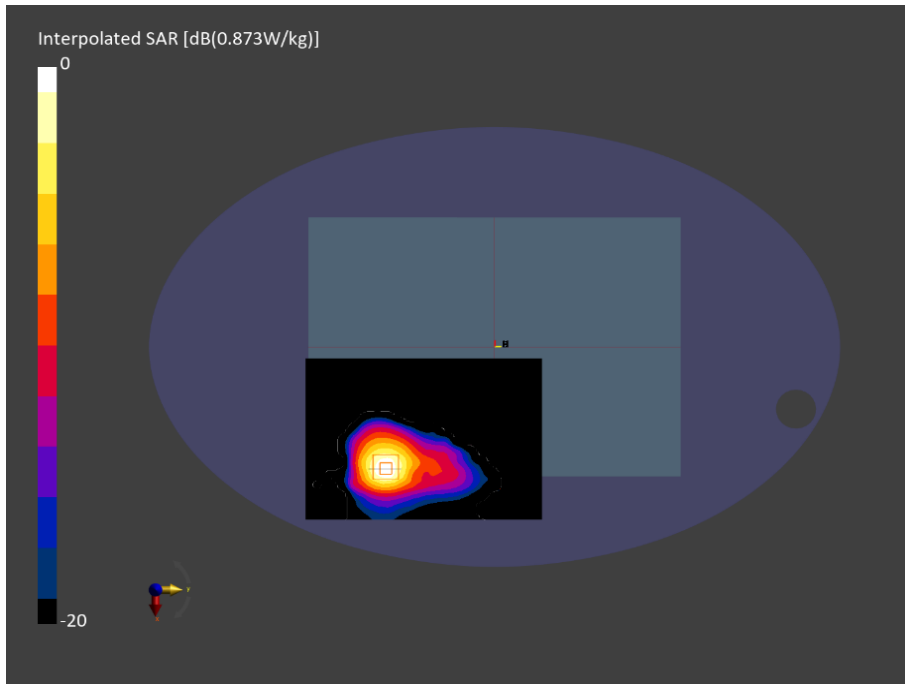


Figure C.23: SAR testing results for the A3185 at 5210 MHz core 1



Measurement Report for A3185, BACK, U-NII-1, U-NII-2A, IEEE 802.11ac WiFi (80MHz, MCS0, 99pc duty cycle), Channel 42 (5210.0 MHz)

Device Under Test Properties

Model, Manufacturer	Dimensions [mm]	IMEI	DUT Type
A3185,	315.0 x 225.0 x 15.0		Laptop

Exposure Conditions

Phantom Section, TSL	Position, Test Distance [mm]	Band	Group, UID	Frequency [MHz], Channel Number	Conversion Factor	TSL Conductivity [S/m]	TSL Permittivity
Flat, HSL	BACK, 0.00	U-NII-1, U-NII-2A	WLAN, 10544-AAC	, 42	5.18	4.46	35.2

Hardware Setup

Phantom	TSL, Measured Date	Probe, Calibration Date	DAE, Calibration Date
ELI V8.0 (20deg probe tilt) - 2202	HBBL-600-10000 DAK 3.5 Head ELI 21.36 deg.C 2024-Sep-11 SYS5 B5.prn, 2024-Sep-11	EX3DV4 - SN7805, 2024-02-14	DAE4ip Sn1785, 2024-02-13

Scans Setup

	Area Scan	Zoom Scan	Zoom Scan
Grid Extents [mm]	x 260.0	22.0 x 22.0 x 22.0	22.0 x 22.0 x 22.0
Grid Steps [mm]	10.0 x 10.0	4.0 x 4.0 x 1.4	4.0 x 4.0 x 1.4
Sensor Surface [mm]	3.0	1.4	1.4
Graded Grid	n/a	Yes	Yes
Grading Ratio	n/a	1.4	1.4
MAIA	Y	N/A	N/A
Surface Detection	VMS + 6p	VMS + 6p	VMS + 6p
Scan Method	Measured	Measured	Measured

Measurement Results

	Area Scan	Zoom Scan	Zoom Scan
Date	2024-09-12, 03:28	2024-09-12, 03:38	2024-09-12, 03:46
psSAR1g [W/Kg]	0.648	0.723	0.560
psSAR10g [W/Kg]	0.245	0.250	0.189
Power Drift [dB]	0.10	0.12	0.07
Power Scaling	Disabled	Disabled	Disabled
Scaling Factor [dB]			
TSL Correction	Positive only	Positive only	Positive only
M2/M1 [%]		61.1	60.2
Dist 3dB Peak [mm]		8.7	8.2

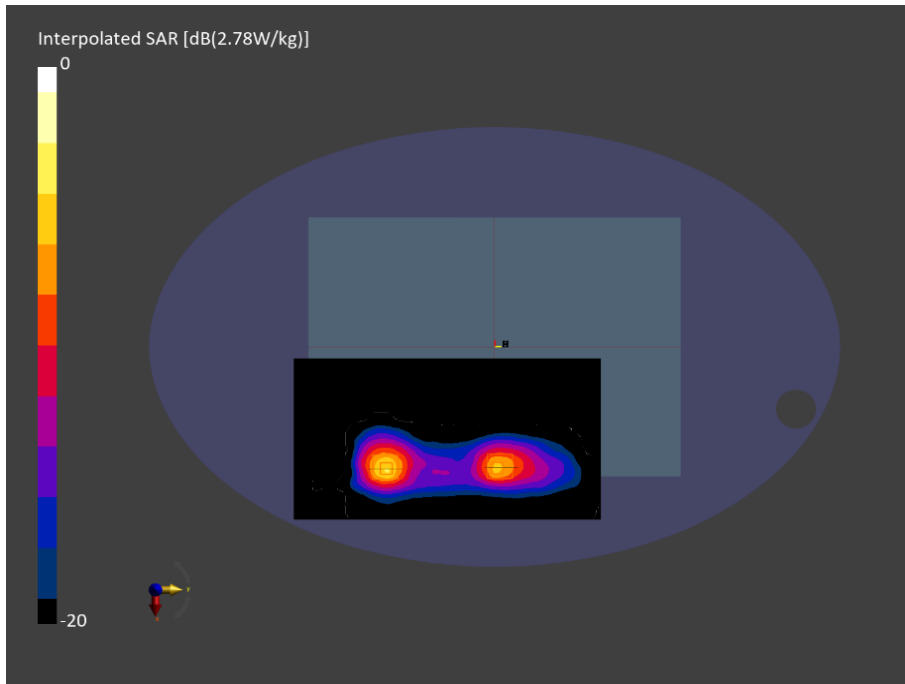


Figure C.24: SAR testing results for the A3185 at 5210 MHz core 0 & 1



Measurement Report for A3185, BACK, WLAN 5GHz, IEEE 802.11ac WiFi (80MHz, MCS0, 99pc duty cycle), Channel 58 (5290.0 MHz)

Device Under Test Properties

Model, Manufacturer	Dimensions [mm]	IMEI	DUT Type
A3185,	315.0 x 225.0 x 15.0		Laptop

Exposure Conditions

Phantom Section, TSL	Position, Test Distance [mm]	Band	Group, UID	Frequency [MHz], Channel Number	Conversion Factor	TSL Conductivity [S/m]	TSL Permittivity
Flat, HSL	BACK, 0.00	WLAN 5GHz	WLAN, 10544-AAC	5290.0, 58	5.01	4.54	35.1

Hardware Setup

Phantom	TSL, Measured Date	Probe, Calibration Date	DAE, Calibration Date
ELI V8.0 (20deg probe tilt) - 2202	HBBL-600-10000 DAK 3.5 Head ELI 21.36 deg.C 2024-Sep-11 SYS5 B5.prn, 2024-Sep-11	EX3DV4 - SN7805, 2024-02-14	DAE4ip Sn1785, 2024-02-13

Scans Setup

	Area Scan	Zoom Scan
Grid Extents [mm]	140.0 x 200.0	22.0 x 22.0 x 22.0
Grid Steps [mm]	10.0 x 10.0	4.0 x 4.0 x 1.4
Sensor Surface [mm]	3.0	1.4
Graded Grid	n/a	Yes
Grading Ratio	n/a	1.4
MAIA	Y	N/A
Surface Detection	VMS + 6p	VMS + 6p
Scan Method	Measured	Measured

Measurement Results

	Area Scan	Zoom Scan
Date	2024-09-12, 04:49	2024-09-12, 04:58
psSAR1g [W/Kg]	0.538	0.620
psSAR10g [W/Kg]	0.205	0.206
Power Drift [dB]	0.00	-0.02
Power Scaling	Disabled	Disabled
Scaling Factor [dB]		
TSL Correction	Positive only	Positive only
M2/M1 [%]		60.3
Dist 3dB Peak [mm]		8.0

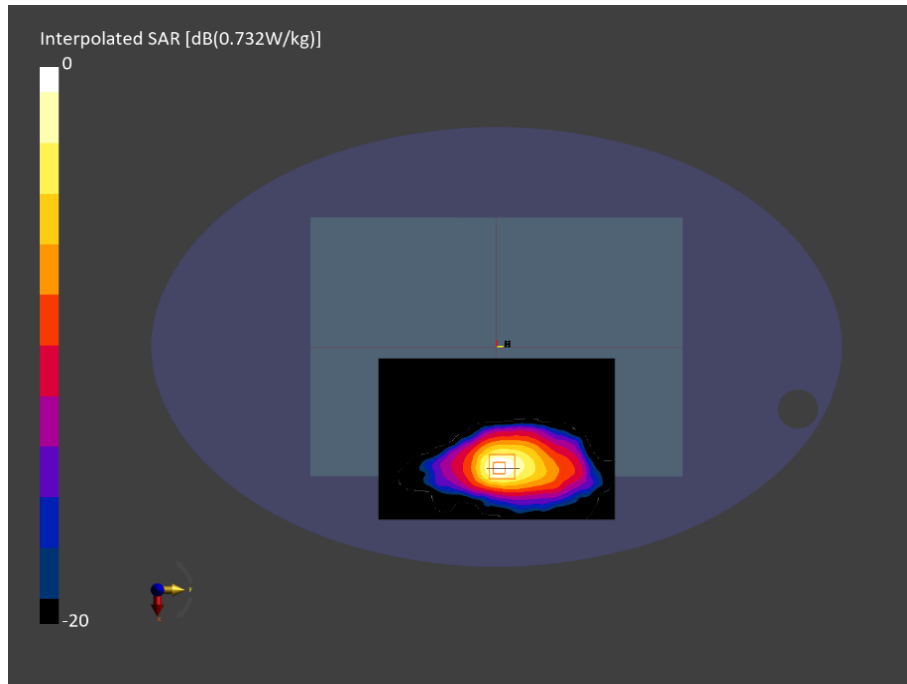


Figure C.25: SAR testing results for the A3185 at 5290 MHz core 0



Measurement Report for A3185, BACK, WLAN 5GHz, IEEE 802.11ac WiFi (80MHz, MCS0, 99pc duty cycle), Channel 58 (5290.0 MHz)

Device Under Test Properties

Model, Manufacturer	Dimensions [mm]	IMEI	DUT Type
A3185,	315.0 x 225.0 x 15.0		Laptop

Exposure Conditions

Phantom Section, TSL	Position, Test Distance [mm]	Band	Group, UID	Frequency [MHz], Channel Number	Conversion Factor	TSL Conductivity [S/m]	TSL Permittivity
Flat, HSL	BACK, 0.00	WLAN 5GHz	WLAN, 10544-AAC	5290.0, 58	5.01	4.54	35.1

Hardware Setup

Phantom	TSL, Measured Date	Probe, Calibration Date	DAE, Calibration Date
ELI V8.0 (20deg probe tilt) - 2202	HBBL-600-10000 DAK 3.5 Head ELI 21.36 deg.C 2024-Sep-11 SYS5 B5.prn, 2024-Sep-11	EX3DV4 - SN7805, 2024-02-14	DAE4ip Sn1785, 2024-02-13

Scans Setup

	Area Scan	Zoom Scan
Grid Extents [mm]	140.0 x 200.0	22.0 x 22.0 x 22.0
Grid Steps [mm]	10.0 x 10.0	4.0 x 4.0 x 1.4
Sensor Surface [mm]	3.0	1.4
Graded Grid	n/a	Yes
Grading Ratio	n/a	1.4
MAIA	Y	N/A
Surface Detection	VMS + 6p	VMS + 6p
Scan Method	Measured	Measured

Measurement Results

	Area Scan	Zoom Scan
Date	2024-09-12, 05:09	2024-09-12, 05:19
psSAR1g [W/Kg]	0.659	0.754
psSAR10g [W/Kg]	0.249	0.260
Power Drift [dB]	0.12	0.13
Power Scaling	Disabled	Disabled
Scaling Factor [dB]		
TSL Correction	Positive only	Positive only
M2/M1 [%]		61.3
Dist 3dB Peak [mm]		8.7

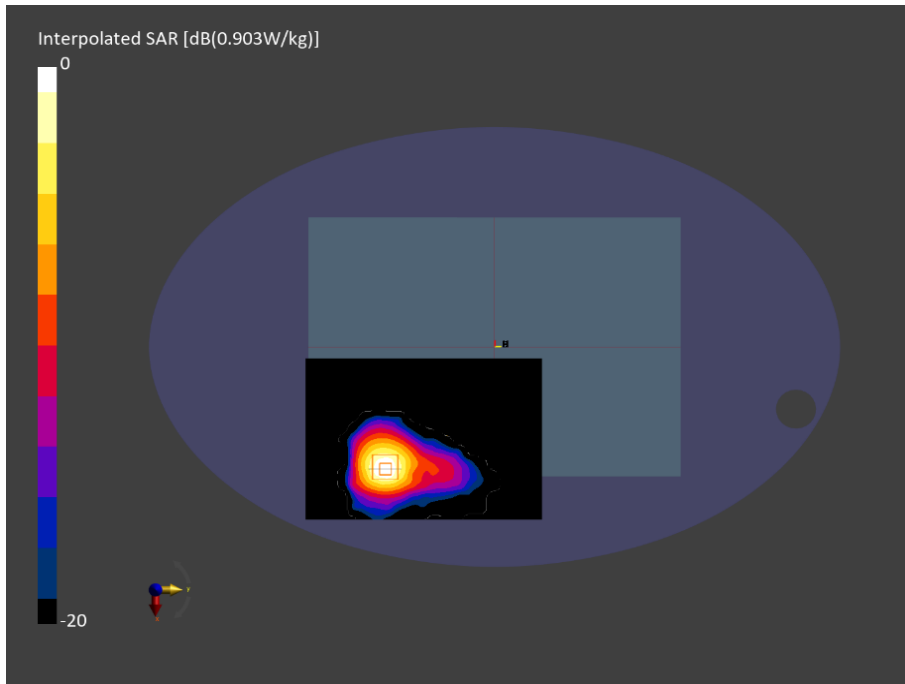


Figure C.26: SAR testing results for the A3185 at 5290 MHz core 1



Measurement Report for A3185, BACK, WLAN 5GHz, IEEE 802.11ac WiFi (80MHz, MCS0, 99pc duty cycle), Channel 58 (5290.0 MHz)

Device Under Test Properties

Model, Manufacturer	Dimensions [mm]	IMEI	DUT Type
A3185,	315.0 x 225.0 x 15.0		Laptop

Exposure Conditions

Phantom Section, TSL	Position, Test Distance [mm]	Band	Group, UID	Frequency [MHz], Channel Number	Conversion Factor	TSL Conductivity [S/m]	TSL Permittivity
Flat, HSL	BACK, 0.00	WLAN 5GHz	WLAN, 10544-AAC	, 58	5.01	4.54	35.1

Hardware Setup

Phantom	TSL, Measured Date	Probe, Calibration Date	DAE, Calibration Date
ELI V8.0 (20deg probe tilt) - 2202	HBBL-600-10000 DAK 3.5 Head ELI 21.36 deg.C 2024-Sep-11 SYS5 B5.prn, 2024-Sep-11	EX3DV4 - SN7805, 2024-02-14	DAE4ip Sn1785, 2024-02-13

Scans Setup

	Area Scan	Zoom Scan	Zoom Scan
Grid Extents [mm]	x 260.0	22.0 x 22.0 x 22.0	22.0 x 22.0 x 22.0
Grid Steps [mm]	10.0 x 10.0	4.0 x 4.0 x 1.4	4.0 x 4.0 x 1.4
Sensor Surface [mm]	3.0	1.4	1.4
Graded Grid	n/a	Yes	Yes
Grading Ratio	n/a	1.4	1.4
MAIA	Y	N/A	N/A
Surface Detection	VMS + 6p	VMS + 6p	VMS + 6p
Scan Method	Measured	Measured	Measured

Measurement Results

	Area Scan	Zoom Scan	Zoom Scan
Date	2024-09-12, 05:31	2024-09-12, 05:40	2024-09-12, 05:49
psSAR1g [W/Kg]	0.652	0.736	0.618
psSAR10g [W/Kg]	0.248	0.256	0.208
Power Drift [dB]	0.21	0.21	0.11
Power Scaling	Disabled	Disabled	Disabled
Scaling Factor [dB]			
TSL Correction	Positive only	Positive only	Positive only
M2/M1 [%]		61.8	60.5
Dist 3dB Peak [mm]		8.4	8.0

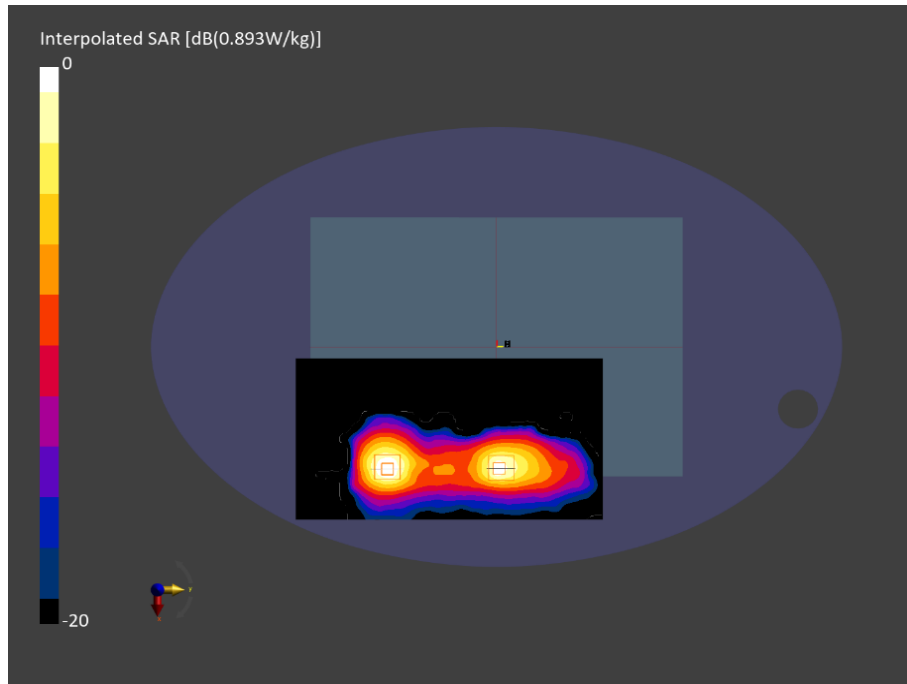


Figure C.27: SAR testing results for the A3185 at 5290 MHz core 0 & 1



Measurement Report for A3185, BACK, WLAN 5GHz, IEEE 802.11ac WiFi (80MHz, MCS0, 99pc duty cycle), Channel 106 (5530.000 MHz)

Device Under Test Properties

Model, Manufacturer	Dimensions [mm]	IMEI	DUT Type
A3185,	315.0 x 225.0 x 15.0		Laptop

Exposure Conditions

Phantom Section, TSL	Position, Test Distance [mm]	Band	Group, UID	Frequency [MHz], Channel Number	Conversion Factor	TSL Conductivity [S/m]	TSL Permittivity
Flat, HSL	BACK, 0.00	WLAN 5GHz	WLAN, 10544-AAC	5530.000, 106	4.75	4.81	34.7

Hardware Setup

Phantom	TSL, Measured Date	Probe, Calibration Date	DAE, Calibration Date
ELI V8.0 (20deg probe tilt) - 2202	HBBL-600-10000 DAK 3.5 Head ELI 21.36 deg.C 2024-Sep-11 SYS5 B5.prn, 2024-Sep-11	EX3DV4 - SN7805, 2024-02-14	DAE4ip Sn1785, 2024-02-13

Scans Setup

	Area Scan	Zoom Scan
Grid Extents [mm]	140.0 x 200.0	22.0 x 22.0 x 22.0
Grid Steps [mm]	10.0 x 10.0	4.0 x 4.0 x 1.4
Sensor Surface [mm]	3.0	1.4
Graded Grid	N/A	Yes
Grading Ratio	N/A	1.4
MAIA	Y	N/A
Surface Detection	VMS + 6p	VMS + 6p
Scan Method	Measured	Measured

Measurement Results

	Area Scan	Zoom Scan
Date	2024-09-12, 08:54	2024-09-12, 09:01
psSAR1g [W/Kg]	0.581	0.667
psSAR10g [W/Kg]	0.206	0.214
Power Drift [dB]	0.07	-0.02
Power Scaling	Disabled	Disabled
Scaling Factor [dB]		
TSL Correction	Positive only	Positive only
M2/M1 [%]		59.7
Dist 3dB Peak [mm]		7.4

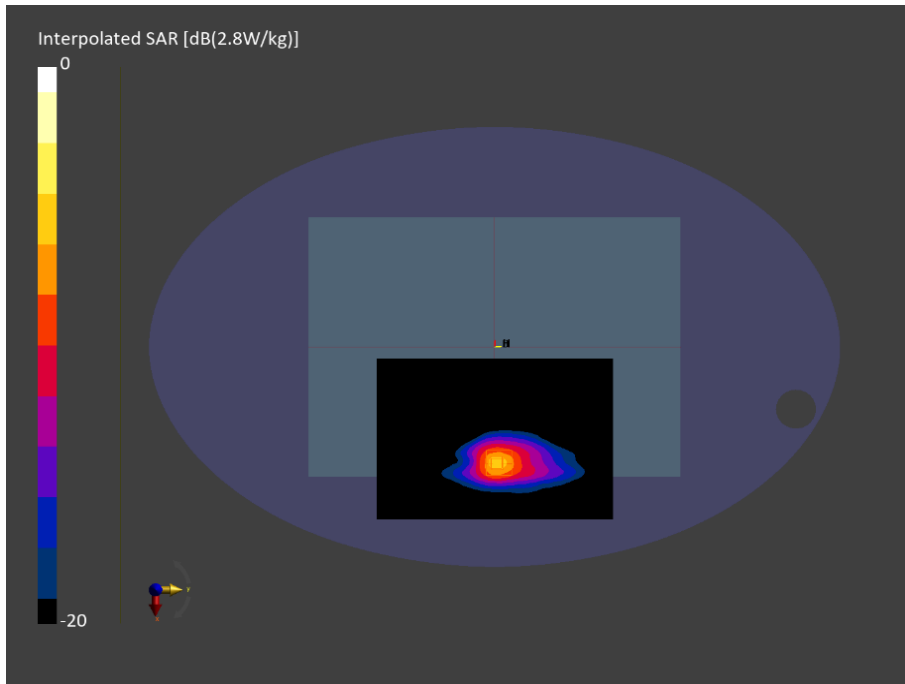


Figure C.28: SAR testing results for the A3185 at 5530 MHz core 0



Measurement Report for A3185, BACK, WLAN 5GHz, IEEE 802.11ac WiFi (80MHz, MCS0, 99pc duty cycle), Channel 138 (5690.0 MHz)

Device Under Test Properties

Model, Manufacturer	Dimensions [mm]	IMEI	DUT Type
A3185,	315.0 x 225.0 x 15.0		Laptop

Exposure Conditions

Phantom Section, TSL	Position, Test Distance [mm]	Band	Group, UID	Frequency [MHz], Channel Number	Conversion Factor	TSL Conductivity [S/m]	TSL Permittivity
Flat, HSL	BACK, 0.00	WLAN 5GHz	WLAN, 10544-AAC	5690.0, 138	4.56	4.99	34.4

Hardware Setup

Phantom	TSL, Measured Date	Probe, Calibration Date	DAE, Calibration Date
ELI V8.0 (20deg probe tilt) - 2202	HBBL-600-10000 DAK 3.5 Head ELI 21.36 deg.C 2024-Sep-11 SYS5 B5.prn, 2024-Sep-11	EX3DV4 - SN7805, 2024-02-14	DAE4ip Sn1785, 2024-02-13

Scans Setup

	Area Scan	Zoom Scan
Grid Extents [mm]	140.0 x 200.0	22.0 x 22.0 x 22.0
Grid Steps [mm]	10.0 x 10.0	4.0 x 4.0 x 1.4
Sensor Surface [mm]	3.0	1.4
Graded Grid	n/a	Yes
Grading Ratio	n/a	1.4
MAIA	Y	N/A
Surface Detection	VMS + 6p	VMS + 6p
Scan Method	Measured	Measured

Measurement Results

	Area Scan	Zoom Scan
Date	2024-09-12, 11:07	2024-09-12, 11:16
psSAR1g [W/Kg]	0.732	0.795
psSAR10g [W/Kg]	0.278	0.280
Power Drift [dB]	-0.06	-0.02
Power Scaling	Disabled	Disabled
Scaling Factor [dB]		
TSL Correction	Positive only	Positive only
M2/M1 [%]		60.1
Dist 3dB Peak [mm]		8.1

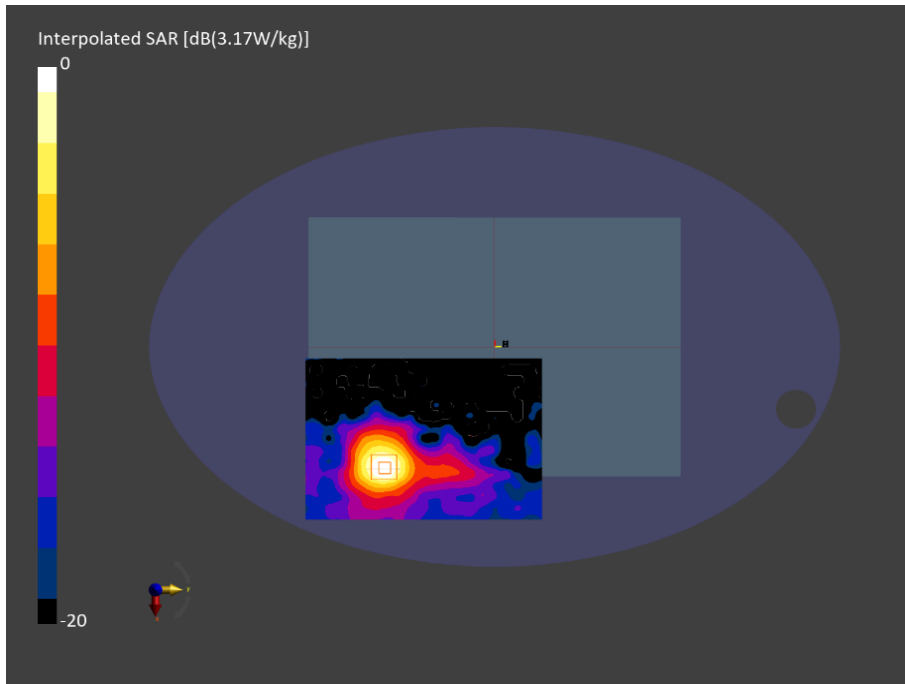


Figure C.29: SAR testing results for the A3185 at 5690 MHz core 1



Measurement Report for A3185, BACK, WLAN 5GHz, IEEE 802.11ac WiFi (80MHz, MCS0, 99pc duty cycle), Channel 122 (5610.000 MHz)

Device Under Test Properties

Model, Manufacturer	Dimensions [mm]	IMEI	DUT Type
A3185,	315.0 x 225.0 x 15.0		Laptop

Exposure Conditions

Phantom Section, TSL	Position, Test Distance [mm]	Band	Group, UID	Frequency [MHz], Channel Number	Conversion Factor	TSL Conductivity [S/m]	TSL Permittivity
Flat, HSL	BACK, 0.00	WLAN 5GHz	WLAN, 10544-AAC	5610.000, 122	4.56	4.90	34.5

Hardware Setup

Phantom	TSL, Measured Date	Probe, Calibration Date	DAE, Calibration Date
ELI V8.0 (20deg probe tilt) - 2202	HBBL-600-10000 DAK 3.5 Head ELI 21.36 deg.C 2024-Sep-11 SYS5 B5.prn, 2024-Sep-11	EX3DV4 - SN7805, 2024-02-14	DAE4ip Sn1785, 2024-02-13

Scans Setup

	Area Scan	Zoom Scan	Zoom Scan
Grid Extents [mm]	x 260.0	22.0 x 22.0 x 22.0	22.0 x 22.0 x 22.0
Grid Steps [mm]	10.0 x 10.0	4.0 x 4.0 x 1.4	4.0 x 4.0 x 1.4
Sensor Surface [mm]	3.0	1.4	1.4
Graded Grid	N/A	Yes	Yes
Grading Ratio	N/A	1.4	1.4
MAIA	Y	N/A	N/A
Surface Detection	VMS + 6p	VMS + 6p	VMS + 6p
Scan Method	Measured	Measured	Measured

Measurement Results

	Area Scan	Zoom Scan	Zoom Scan
Date	2024-09-12, 12:50	2024-09-12, 12:59	2024-09-12, 13:08
psSAR1g [W/Kg]	0.696	0.767	0.428
psSAR10g [W/Kg]	0.263	0.276	0.139
Power Drift [dB]	0.23	-0.11	-0.13
Power Scaling	Disabled	Disabled	Disabled
Scaling Factor [dB]			
TSL Correction	Positive only	Positive only	Positive only
M2/M1 [%]		60.0	58.3
Dist 3dB Peak [mm]		8.4	8.2

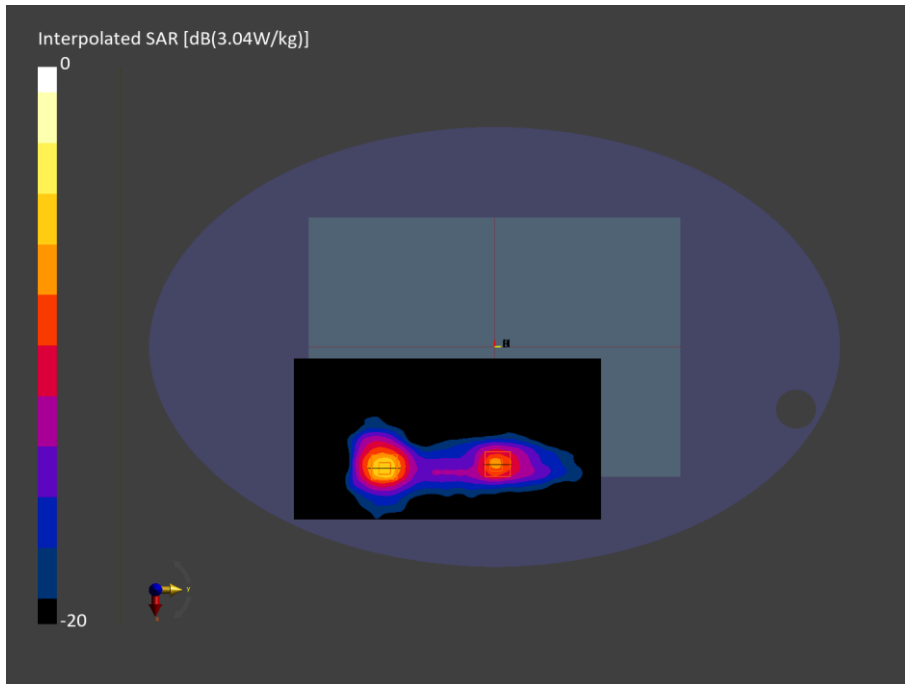


Figure C.30: SAR testing results for the A3185 at 5610 MHz core 0 & 1



Measurement Report for A3185, BACK, WLAN 5GHz, IEEE 802.11ac WiFi (80MHz, MCS0, 99pc duty cycle), Channel 155 (5775.0 MHz)

Device Under Test Properties

Model, Manufacturer	Dimensions [mm]	IMEI	DUT Type
A3185,	315.0 x 225.0 x 15.0		Laptop

Exposure Conditions

Phantom Section, TSL	Position, Test Distance [mm]	Band	Group, UID	Frequency [MHz], Channel Number	Conversion Factor	TSL Conductivity [S/m]	TSL Permittivity
Flat, HSL	BACK, 0.00	WLAN 5GHz	WLAN, 10544-AAC	5775.0, 155	4.63	5.09	34.3

Hardware Setup

Phantom	TSL, Measured Date	Probe, Calibration Date	DAE, Calibration Date
ELI V8.0 (20deg probe tilt) - 2202	HBBL-600-10000 DAK 3.5 Head ELI 21.36 deg.C 2024-Sep-11 SYS5 B5.prn, 2024-Sep-11	EX3DV4 - SN7805, 2024-02-14	DAE4ip Sn1785, 2024-02-13

Scans Setup

	Area Scan	Zoom Scan
Grid Extents [mm]	140.0 x 200.0	22.0 x 22.0 x 22.0
Grid Steps [mm]	10.0 x 10.0	4.0 x 4.0 x 1.4
Sensor Surface [mm]	3.0	1.4
Graded Grid	n/a	Yes
Grading Ratio	n/a	1.4
MAIA	Y	N/A
Surface Detection	VMS + 6p	VMS + 6p
Scan Method	Measured	Measured

Measurement Results

	Area Scan	Zoom Scan
Date	2024-09-11, 21:54	2024-09-11, 22:02
psSAR1g [W/Kg]	0.424	0.492
psSAR10g [W/Kg]	0.150	0.157
Power Drift [dB]	0.15	0.14
Power Scaling	Disabled	Disabled
Scaling Factor [dB]		
TSL Correction	Positive only	Positive only
M2/M1 [%]		55.6
Dist 3dB Peak [mm]		8.2

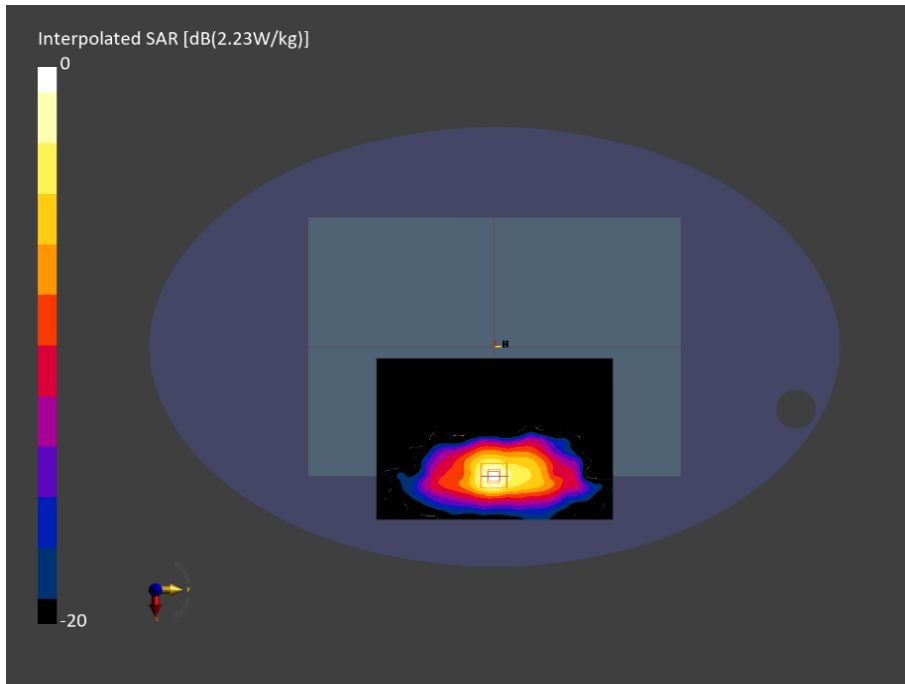


Figure C.31: SAR testing results for the A3185 at 5775 MHz core 0



Measurement Report for A3185, BACK, WLAN 5GHz, IEEE 802.11ac WiFi (80MHz, MCS0, 99pc duty cycle), Channel 155 (5775.0 MHz)

Device Under Test Properties

Model, Manufacturer	Dimensions [mm]	IMEI	DUT Type
A3185,	315.0 x 225.0 x 15.0		Laptop

Exposure Conditions

Phantom Section, TSL	Position, Test Distance [mm]	Band	Group, UID	Frequency [MHz], Channel Number	Conversion Factor	TSL Conductivity [S/m]	TSL Permittivity
Flat, HSL	BACK, 0.00	WLAN 5GHz	WLAN, 10544-AAC	5775.0, 155	4.63	5.09	34.3

Hardware Setup

Phantom	TSL, Measured Date	Probe, Calibration Date	DAE, Calibration Date
ELI V8.0 (20deg probe tilt) - 2202	HBBL-600-10000 DAK 3.5 Head ELI 21.36 deg.C 2024-Sep-11 SYS5 B5.prn, 2024-Sep-11	EX3DV4 - SN7805, 2024-02-14	DAE4ip Sn1785, 2024-02-13

Scans Setup

	Area Scan	Zoom Scan
Grid Extents [mm]	140.0 x 200.0	22.0 x 22.0 x 22.0
Grid Steps [mm]	10.0 x 10.0	4.0 x 4.0 x 1.4
Sensor Surface [mm]	3.0	1.4
Graded Grid	n/a	Yes
Grading Ratio	n/a	1.4
MAIA	Y	N/A
Surface Detection	VMS + 6p	VMS + 6p
Scan Method	Measured	Measured

Measurement Results

	Area Scan	Zoom Scan
Date	2024-09-11, 22:19	2024-09-11, 22:30
psSAR1g [W/Kg]	0.521	0.576
psSAR10g [W/Kg]	0.201	0.201
Power Drift [dB]	0.01	0.20
Power Scaling	Disabled	Disabled
Scaling Factor [dB]		
TSL Correction	Positive only	Positive only
M2/M1 [%]		57.1
Dist 3dB Peak [mm]		8.9

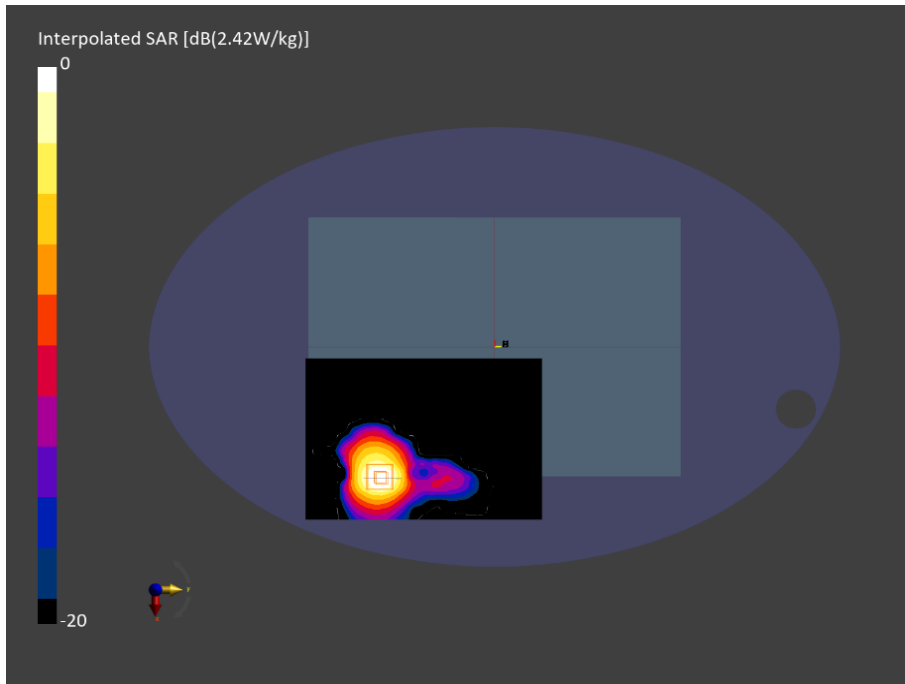


Figure C.32: SAR testing results for the A3185 at 5775 MHz core 1



Measurement Report for A3185, BACK, WLAN 5GHz, IEEE 802.11ac WiFi (80MHz, MCS0, 99pc duty cycle), Channel 155 (5775.0 MHz)

Device Under Test Properties

Model, Manufacturer	Dimensions [mm]	IMEI	DUT Type
A3185,	315.0 x 225.0 x 15.0		Laptop

Exposure Conditions

Phantom Section, TSL	Position, Test Distance [mm]	Band	Group, UID	Frequency [MHz], Channel Number	Conversion Factor	TSL Conductivity [S/m]	TSL Permittivity
Flat, HSL	BACK, 0.00	WLAN 5GHz	WLAN, 10544-AAC	, 155	4.63	5.09	34.3

Hardware Setup

Phantom	TSL, Measured Date	Probe, Calibration Date	DAE, Calibration Date
ELI V8.0 (20deg probe tilt) - 2202	HBBL-600-10000 DAK 3.5 Head ELI 21.36 deg.C 2024-Sep-11 SYS5 B5.prn, 2024-Sep-11	EX3DV4 - SN7805, 2024-02-14	DAE4ip Sn1785, 2024-02-13

Scans Setup

	Area Scan	Zoom Scan	Zoom Scan
Grid Extents [mm]	x 260.0	22.0 x 22.0 x 22.0	22.0 x 22.0 x 22.0
Grid Steps [mm]	10.0 x 10.0	4.0 x 4.0 x 1.4	4.0 x 4.0 x 1.4
Sensor Surface [mm]	3.0	1.4	1.4
Graded Grid	n/a	Yes	Yes
Grading Ratio	n/a	1.4	1.4
MAIA	Y	N/A	N/A
Surface Detection	VMS + 6p	VMS + 6p	VMS + 6p
Scan Method	Measured	Measured	Measured

Measurement Results

	Area Scan	Zoom Scan	Zoom Scan
Date	2024-09-11, 22:48	2024-09-11, 22:59	2024-09-11, 23:06
psSAR1g [W/Kg]	0.557	0.596	0.436
psSAR10g [W/Kg]	0.216	0.213	0.139
Power Drift [dB]	-0.06	0.05	-0.12
Power Scaling	Disabled	Disabled	Disabled
Scaling Factor [dB]			
TSL Correction	Positive only	Positive only	Positive only
M2/M1 [%]		57.0	55.5
Dist 3dB Peak [mm]		9.2	8.2

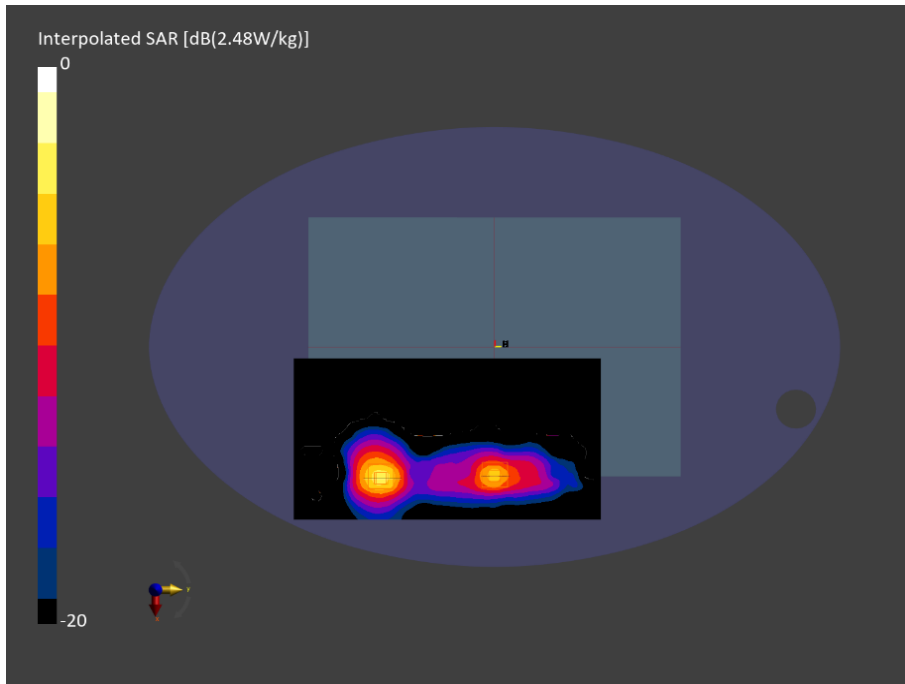


Figure C.33: SAR testing results for the A3185 at 5775 MHz core 0 & 1



Measurement Report for A3185, BACK, U-NII-5, IEEE 802.11ax (160MHz, MCS0, 99pc duty cycle), Channel 79 (6345.0 MHz)

Device Under Test Properties

Model, Manufacturer	Dimensions [mm]	IMEI	DUT Type
A3185,	315.0 x 225.0 x 15.0		Laptop

Exposure Conditions

Phantom Section, TSL	Position, Test Distance [mm]	Band	Group, UID	Frequency [MHz], Channel Number	Conversion Factor	TSL Conductivity [S/m]	TSL Permittivity
Flat, HSL	BACK, 0.00	U-NII-5	WLAN, 10755-AAC	6345.0, 79	5.61	5.69	32.5

Hardware Setup

Phantom	TSL, Measured Date	Probe, Calibration Date	DAE, Calibration Date
ELI V8.0 (20deg probe tilt) - 2203	HBBL-600-10000 DAK 3.5 Head ELI 20.95 deg.C 2024-Sep-11 SYS6 B6.prn, 2024-Sep-11	EX3DV4 - SN7809, 2024-05-13	DAE4ip Sn1789, 2024-05-03

Scans Setup

	Area Scan	Zoom Scan
Grid Extents [mm]	153.0 x 204.0	22.0 x 22.0 x 22.0
Grid Steps [mm]	8.5 x 8.5	3.4 x 3.4 x 1.4
Sensor Surface [mm]	3.0	1.4
Graded Grid	n/a	Yes
Grading Ratio	n/a	1.4
MAIA	Y	N/A
Surface Detection	VMS + 6p	VMS + 6p
Scan Method	Measured	Measured

Measurement Results

	Area Scan	Zoom Scan
Date	2024-09-12, 10:40	2024-09-12, 10:51
psSAR1g [W/Kg]	0.345	0.378
psSAR10g [W/Kg]	0.114	0.121
psAPD (4.0cm2, sq) [W/m2]		2.76
Power Drift [dB]	0.04	-0.08
Power Scaling	Disabled	Disabled
Scaling Factor [dB]		
TSL Correction	Positive only	Positive only
M2/M1 [%]		48.7
Dist 3dB Peak [mm]		7.0

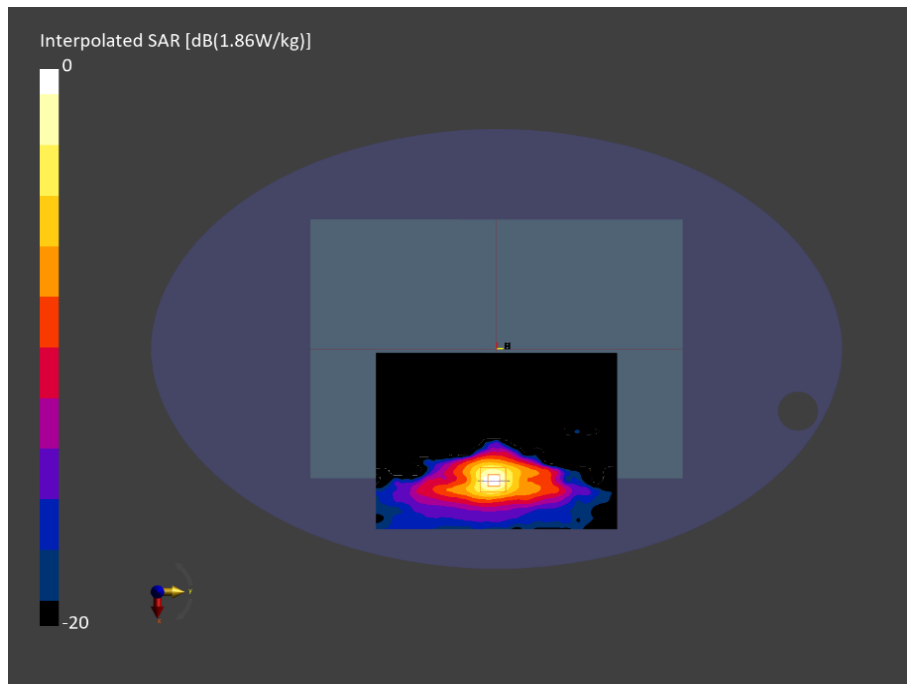


Figure C.34: SAR testing results for the A3185 at 6345 MHz core 0



Measurement Report for A3185, BACK, U-NII-7, IEEE 802.11ax (40MHz, MCS0, 99pc duty cycle), Channel 123 (6565.0 MHz)

Device Under Test Properties

Model, Manufacturer	Dimensions [mm]	IMEI	DUT Type
A3185,	315.0 x 225.0 x 15.0		Laptop

Exposure Conditions

Phantom Section, TSL	Position, Test Distance [mm]	Band	Group, UID	Frequency [MHz], Channel Number	Conversion Factor	TSL Conductivity [S/m]	TSL Permittivity
Flat, HSL	BACK, 0.00	U-NII-7	WLAN, 10707-AAC	6565.0, 123	5.61	5.95	32.1

Hardware Setup

Phantom	TSL, Measured Date	Probe, Calibration Date	DAE, Calibration Date
ELI V8.0 (20deg probe tilt) - 2203	HBBL-600-10000 DAK 3.5 Head ELI 20.95 deg.C 2024-Sep-11 SYS6 B6.prn, 2024-Sep-11	EX3DV4 - SN7809, 2024-05-13	DAE4ip Sn1789, 2024-05-03

Scans Setup

	Area Scan	Zoom Scan
Grid Extents [mm]	153.0 x 204.0	22.0 x 22.0 x 22.0
Grid Steps [mm]	8.5 x 8.5	3.4 x 3.4 x 1.4
Sensor Surface [mm]	3.0	1.4
Graded Grid	n/a	Yes
Grading Ratio	n/a	1.4
MAIA	Y	Y
Surface Detection	VMS + 6p	VMS + 6p
Scan Method	Measured	Measured

Measurement Results

	Area Scan	Zoom Scan
Date	2024-09-12, 16:26	2024-09-12, 16:37
psSAR1g [W/Kg]	0.354	0.349
psSAR10g [W/Kg]	0.135	0.133
psAPD (4.0cm2, sq) [W/m2]		2.97
Power Drift [dB]	0.04	-0.06
Power Scaling	Disabled	Disabled
Scaling Factor [dB]		
TSL Correction	Positive only	Positive only
M2/M1 [%]		49.5
Dist 3dB Peak [mm]		10.9

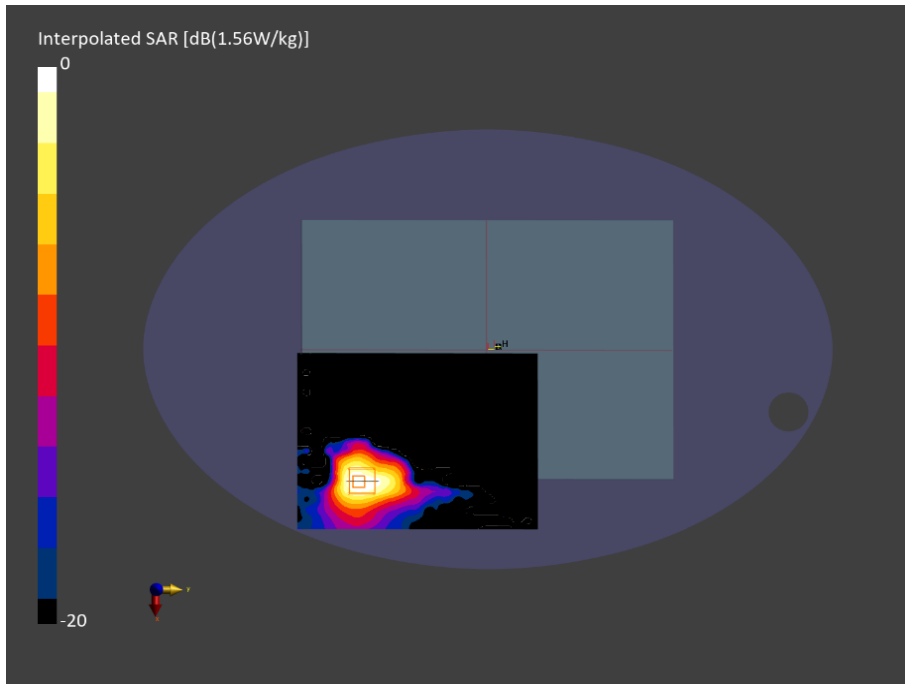


Figure C.35: SAR testing results for the A3185 at 6565 MHz core 1



Measurement Report for A3185, BACK, U-NII-5, IEEE 802.11ax (160MHz, MCS0, 99pc duty cycle), Channel 79 (6345.0 MHz)

Device Under Test Properties

Model, Manufacturer	Dimensions [mm]	IMEI	DUT Type
A3185,	315.0 x 225.0 x 15.0		Laptop

Exposure Conditions

Phantom Section, TSL	Position, Test Distance [mm]	Band	Group, UID	Frequency [MHz], Channel Number	Conversion Factor	TSL Conductivity [S/m]	TSL Permittivity
Flat, HSL	BACK, 0.00	U-NII-5	WLAN, 10755-AAC	, 79	5.61	5.69	32.5

Hardware Setup

Phantom	TSL, Measured Date	Probe, Calibration Date	DAE, Calibration Date
ELI V8.0 (20deg probe tilt) - 2203	HBBL-600-10000 DAK 3.5 Head ELI 20.95 deg.C 2024-Sep-11 SYS6 B6.prn, 2024-Sep-11	EX3DV4 - SN7809, 2024-05-13	DAE4ip Sn1789, 2024-05-03

Scans Setup

	Area Scan	Zoom Scan	Zoom Scan
Grid Extents [mm]	x 272.0	22.0 x 22.0 x 22.0	22.0 x 22.0 x 22.0
Grid Steps [mm]	8.5 x 8.5	3.4 x 3.4 x 1.4	3.4 x 3.4 x 1.4
Sensor Surface [mm]	3.0	1.4	1.4
Graded Grid	n/a	Yes	Yes
Grading Ratio	n/a	1.4	1.4
MAIA	Y	N/A	N/A
Surface Detection	VMS + 6p	VMS + 6p	VMS + 6p
Scan Method	Measured	Measured	Measured

Measurement Results

	Area Scan	Zoom Scan	Zoom Scan
Date	2024-09-12, 22:18	2024-09-12, 22:32	2024-09-12, 22:47
psSAR1g [W/kg]	0.417	0.416	0.414
psSAR10g [W/kg]	0.161	0.161	0.134
psAPD (4.0cm2, sq) [W/m2]		3.60	3.06
Power Drift [dB]	-0.01	0.14	0.01
Power Scaling	Disabled	Disabled	Disabled
Scaling Factor [dB]			
TSL Correction	Positive only	Positive only	Positive only
M2/M1 [%]		53.0	49.0
Dist 3dB Peak [mm]		10.2	7.5

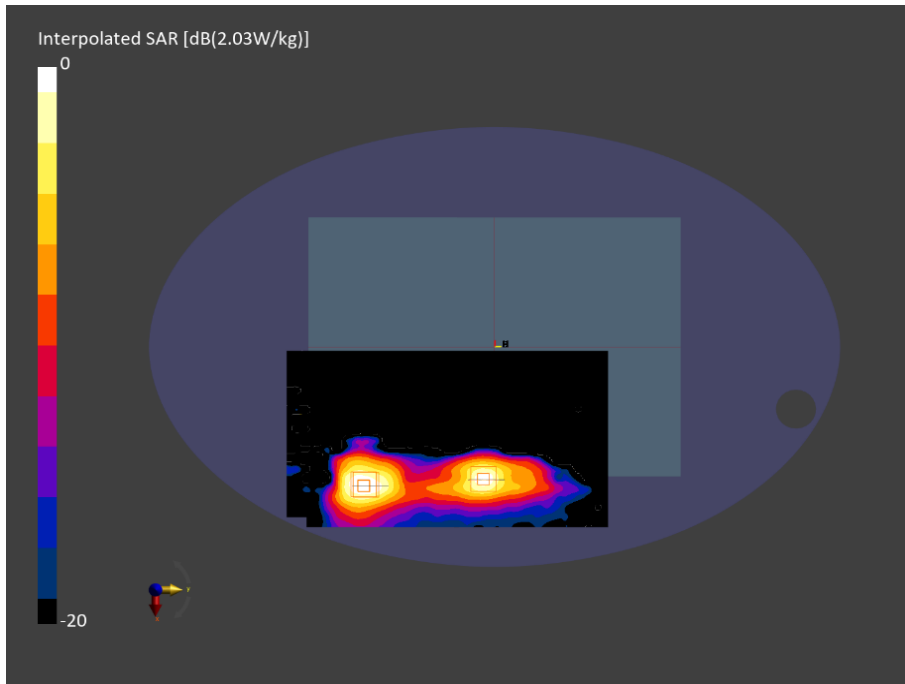


Figure C.36: SAR testing results for the A3185 at 6345 MHz core 0 & 1



Measurement Report for A3185, BACK, U-NII-5, IEEE 802.11ax (160MHz, MCS0, 99pc duty cycle), Channel 15 (6025.0 MHz)

Device Under Test Properties

Model, Manufacturer	Dimensions [mm]	IMEI	DUT Type
A3185,	315.0 x 225.0 x 15.0		Laptop

Exposure Conditions

Phantom Section, TSL	Position, Test Distance [mm]	Band	Group, UID	Frequency [MHz], Channel Number	Conversion Factor	TSL Conductivity [S/m]	TSL Permittivity
Flat, HSL	BACK, 0.00	U-NII-5	WLAN, 10755-AAC	, 15	5.61	5.31	33.0

Hardware Setup

Phantom	TSL, Measured Date	Probe, Calibration Date	DAE, Calibration Date
ELI V8.0 (20deg probe tilt) - 2203	HBBL-600-10000 DAK 3.5 Head ELI 20.95 deg.C 2024-Sep-11 SYS6 B6.prn, 2024-Sep-11	EX3DV4 - SN7809, 2024-05-13	DAE4ip Sn1789, 2024-05-03

Scans Setup

	Area Scan	Zoom Scan	Zoom Scan
Grid Extents [mm]	x 272.0	22.0 x 22.0 x 22.0	22.0 x 22.0 x 22.0
Grid Steps [mm]	8.5 x 8.5	3.4 x 3.4 x 1.4	3.4 x 3.4 x 1.4
Sensor Surface [mm]	3.0	1.4	1.4
Graded Grid	n/a	Yes	Yes
Grading Ratio	n/a	1.4	1.4
MAIA	Y	N/A	Y
Surface Detection	VMS + 6p	VMS + 6p	VMS + 6p
Scan Method	Measured	Measured	Measured

Measurement Results

	Area Scan	Zoom Scan	Zoom Scan
Date	2024-09-12, 20:46	2024-09-12, 21:00	2024-09-12, 21:15
psSAR1g [W/kg]	0.451	0.453	0.357
psSAR10g [W/kg]	0.171	0.167	0.115
psAPD (4.0cm2, sq) [W/m2]		3.75	2.63
Power Drift [dB]	-0.01	0.02	-0.06
Power Scaling	Disabled	Disabled	Disabled
Scaling Factor [dB]			
TSL Correction	Positive only	Positive only	Positive only
M2/M1 [%]		51.9	50.9
Dist 3dB Peak [mm]		9.1	7.6

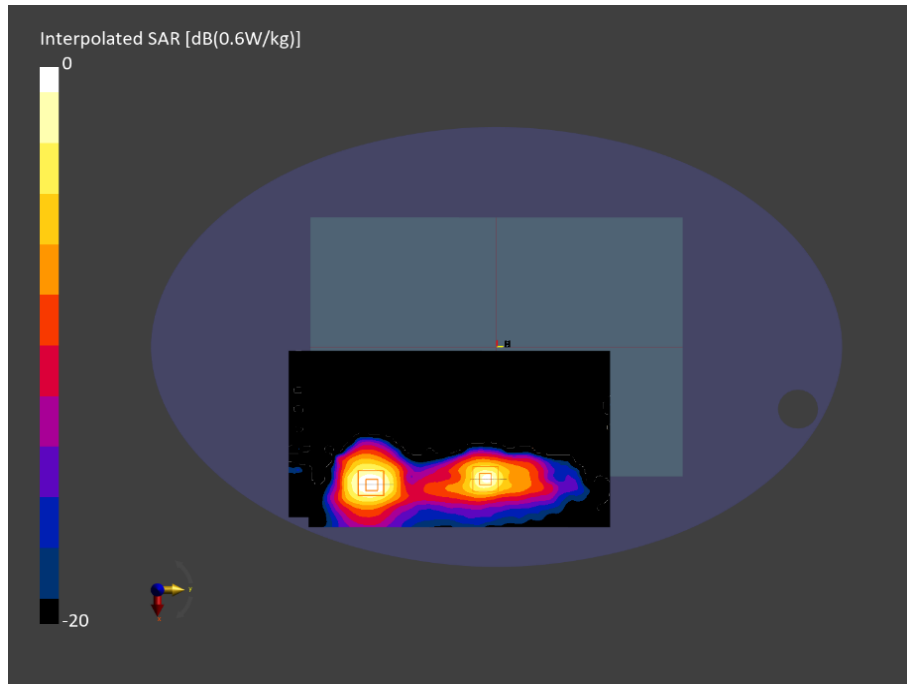


Figure C.37: SAR testing results for the A3185 at 6025 MHz core 0 & 1



Measurement Report for A3185, BACK, U-NII-5, IEEE 802.11ax (160MHz, MCS0, 99pc duty cycle), Channel 79 (6345.0 MHz)

Device Under Test Properties

Model, Manufacturer	Dimensions [mm]	IMEI	DUT Type
A3185,	315.0 x 225.0 x 15.0		Laptop

Exposure Conditions

Phantom Section	Position, Test Distance [mm]	Band	Group, UID	Frequency [MHz], Channel Number	Conversion Factor
5G	BACK, 2.00	U-NII-5	WLAN, 10755-AAC	6345.0, 79	1.0

Hardware Setup

Phantom	Medium	Probe, Calibration Date	DAE, Calibration Date
mmWave - 1112	Air -	EUmmWV4 - SN9641_F1-55GHz, 2023-10-24	DAE4ip Sn1786, 2024-08-07

Scans Setup

Scan Type	5G Scan
Grid Extents [mm]	60.0 x 110.0
Grid Steps [lambda]	0.043202144247958554 x 0.043202144247958554
Sensor Surface [mm]	2.0
MAIA	Y

Measurement Results

Scan Type	5G Scan
Date	2024-09-16, 20:08
Avg. Area [cm ²]	4.00
psPDn+ [W/m ²]	3.34
psPDtot+ [W/m ²]	6.70
psPDmod+ [W/m ²]	11.0
E _{max} [V/m]	110
Power Drift [dB]	-0.18

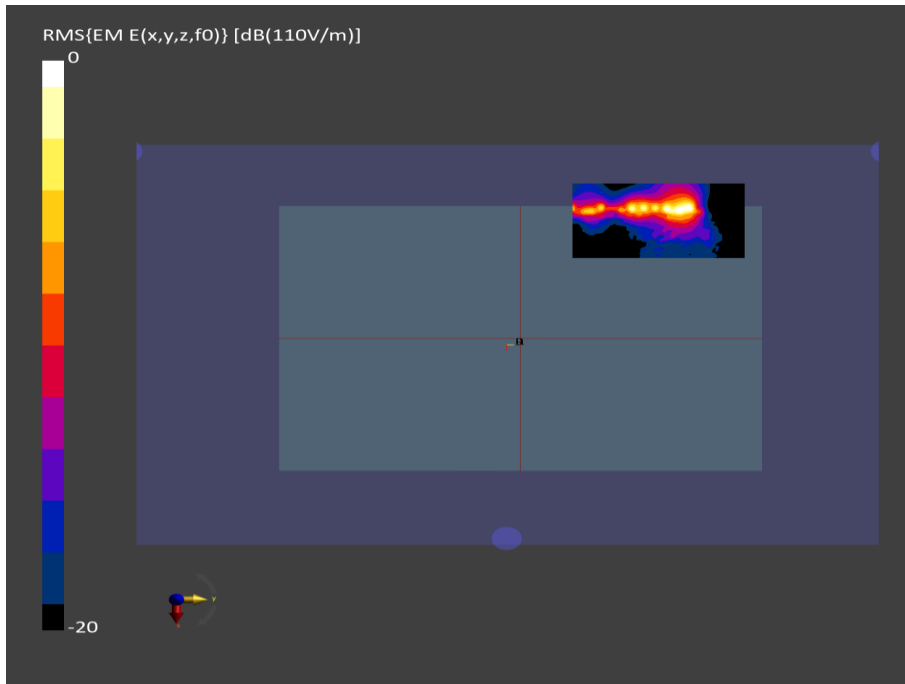


Figure C.38: iPD testing results for the A3185 at 6345 MHz core 1



ANNEX D

THREAD TECHNOLOGY DUTY FACTOR CORRECTION



A3185 Thread Scaling Rationale

The measured SAR Results for the Thread technology, as detailed in this document, are scaled down to 60.96% to adjust for the normal operating conditions of this technology as shown in figure 13. With the measured SAR Results having been taken with the device operating in a test mode, on a fixed channel with 100% duty cycle, as shown below in figure 12.

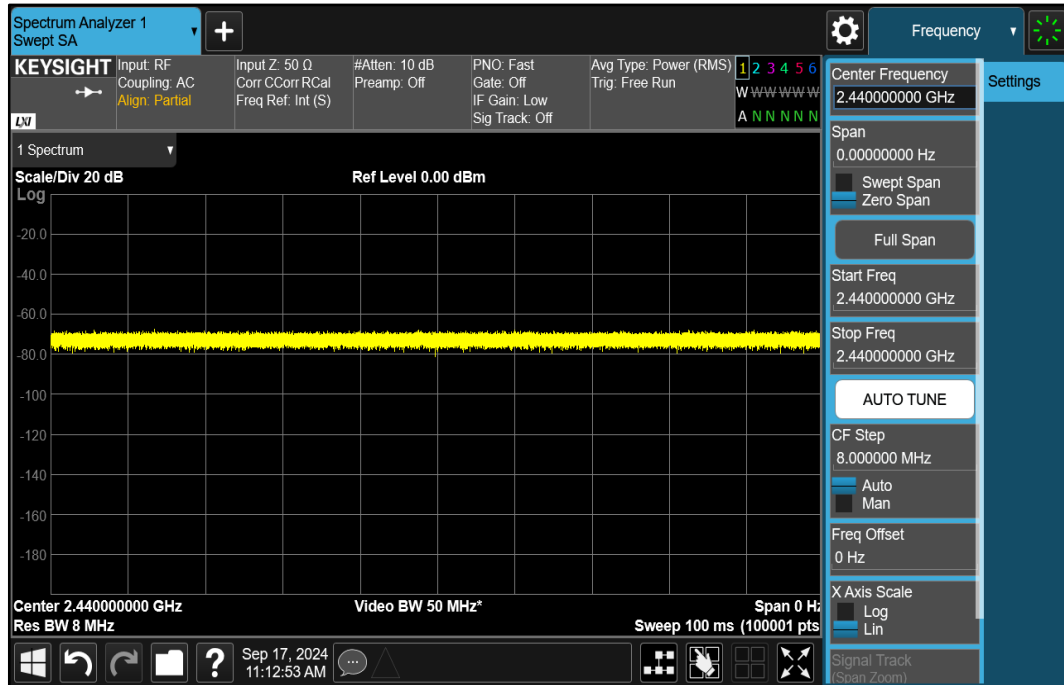


Figure 12 - Thread ePA - Frequency of 2440MHz (100% Duty Cycle)

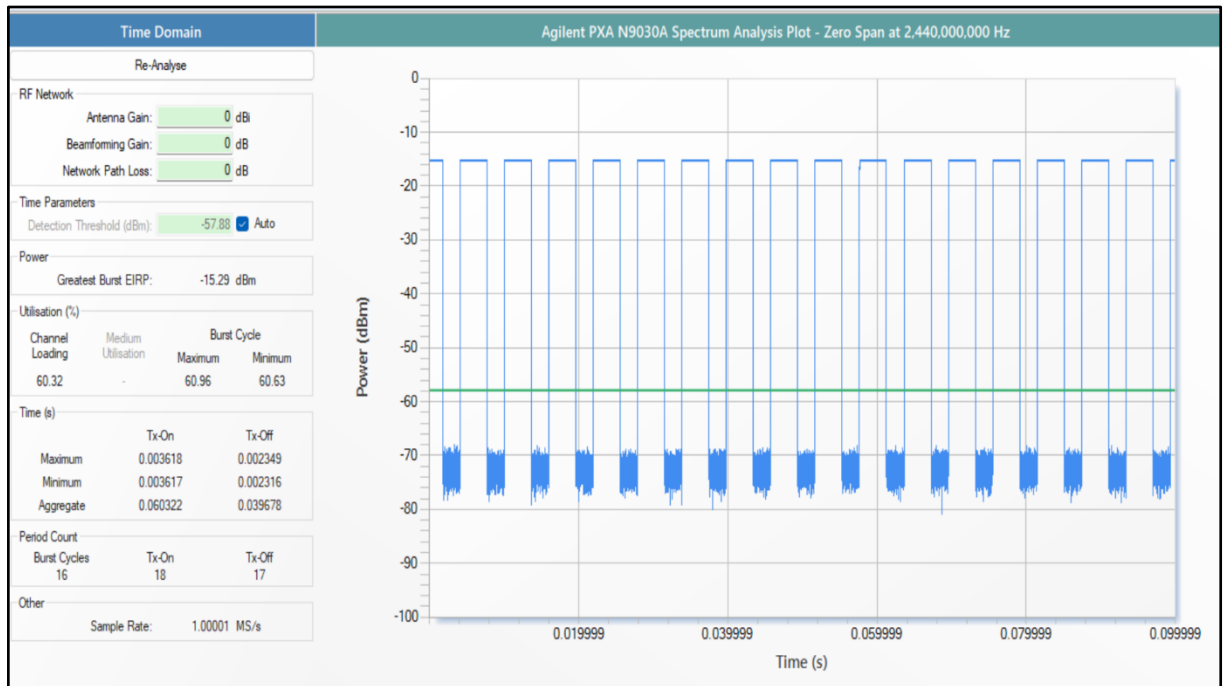


Figure 13 - Thread ePA - Frequency of 2440MHz (60.96% Duty Cycle)