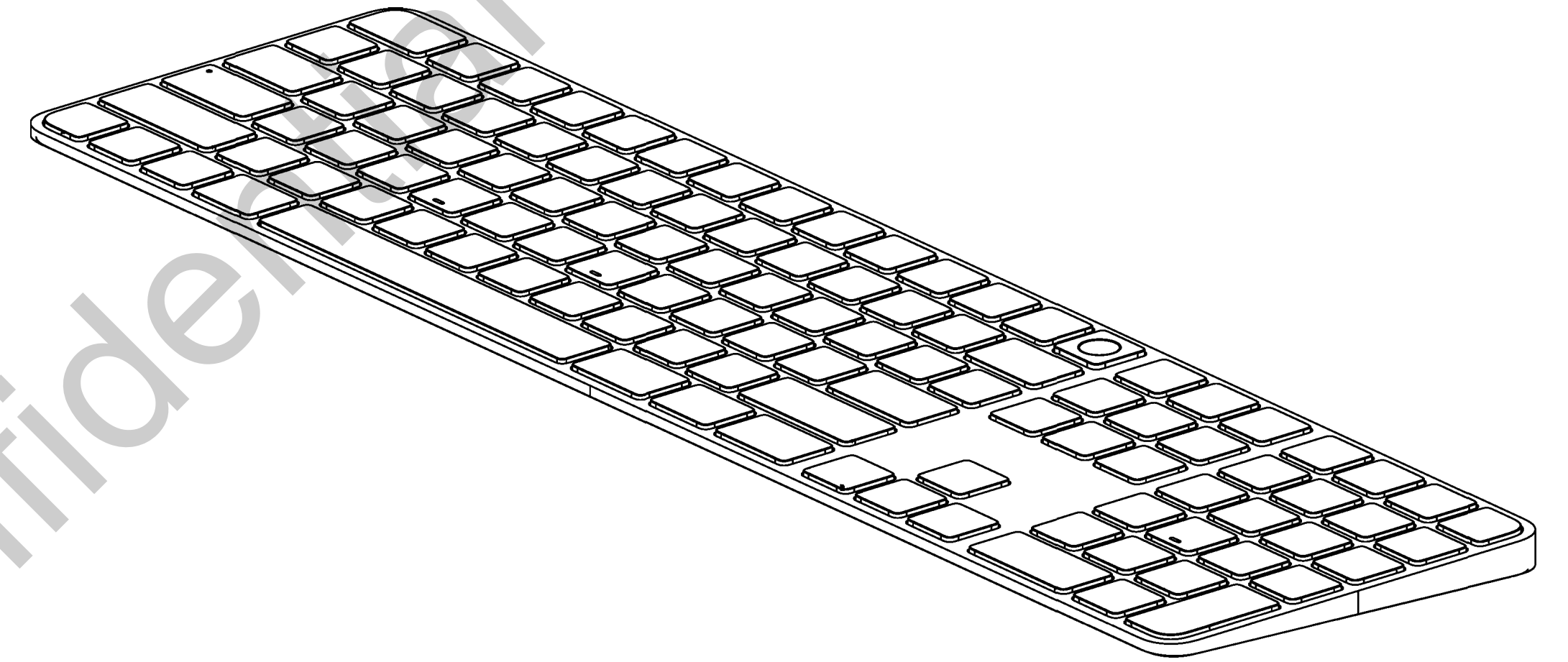
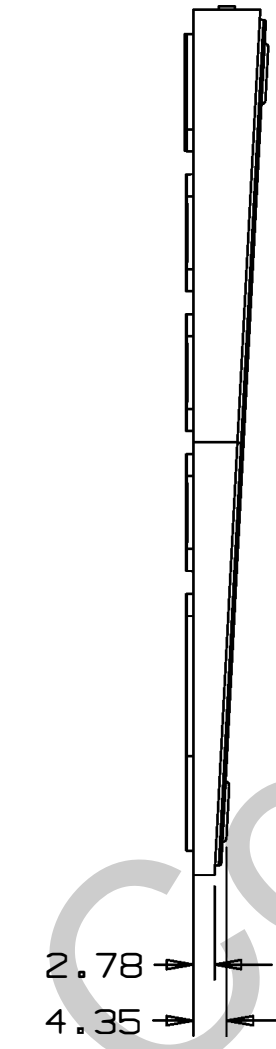
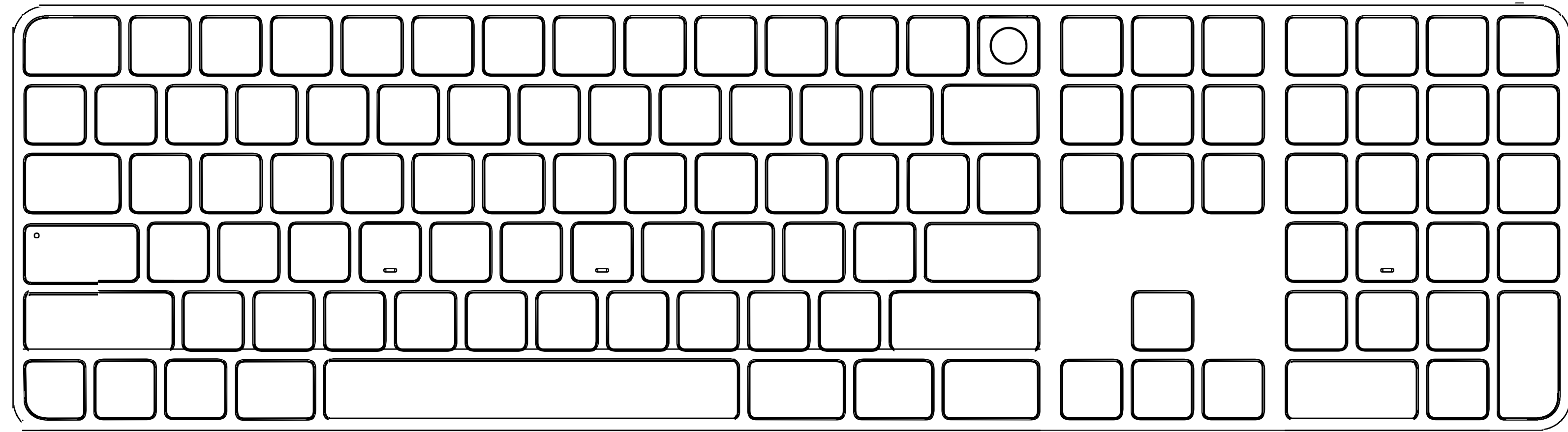
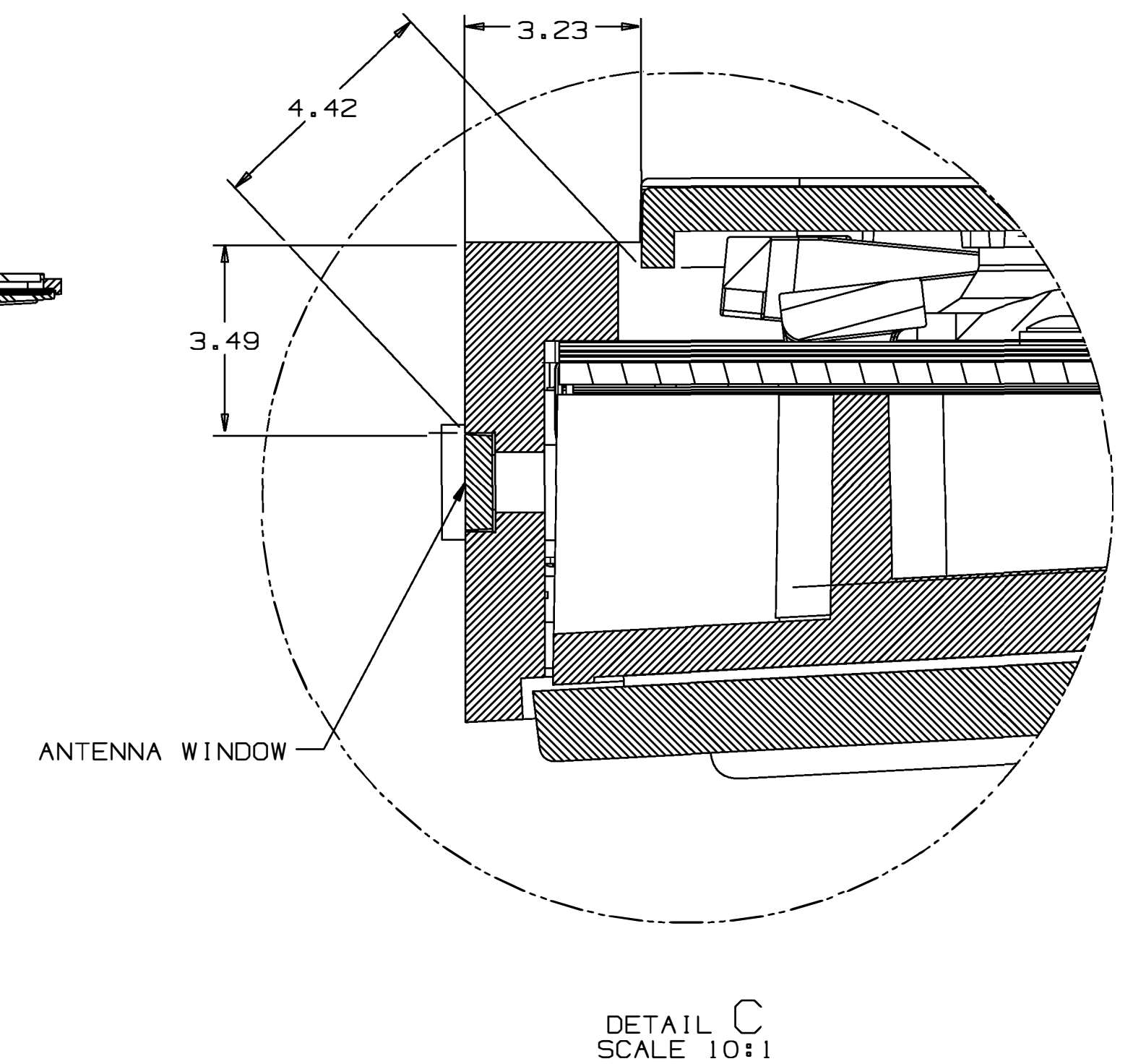
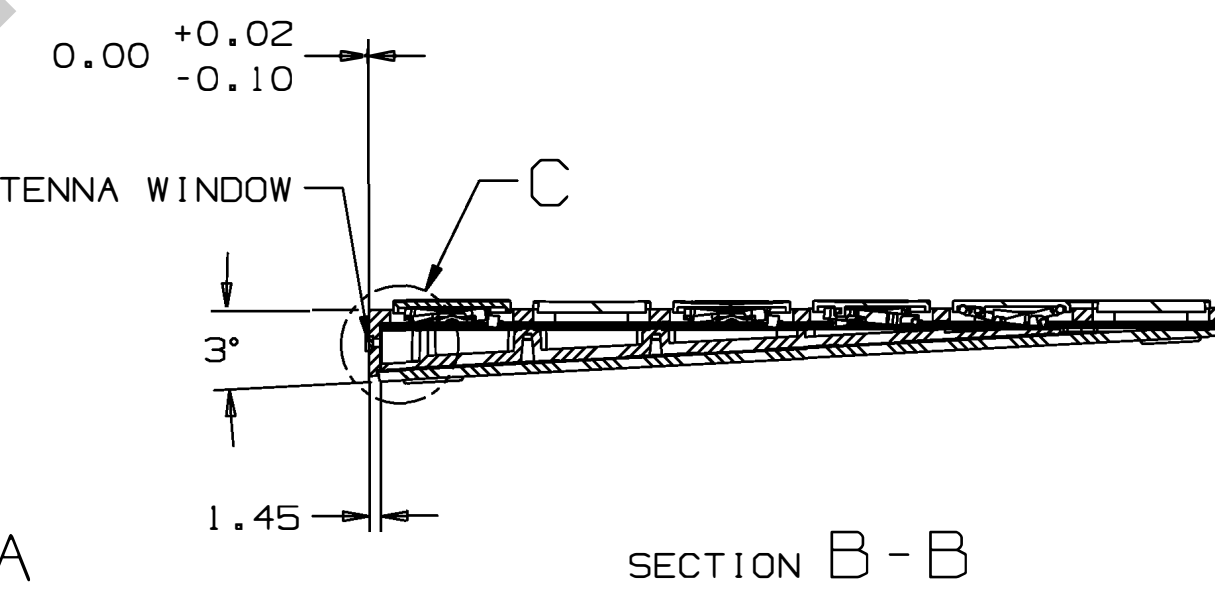
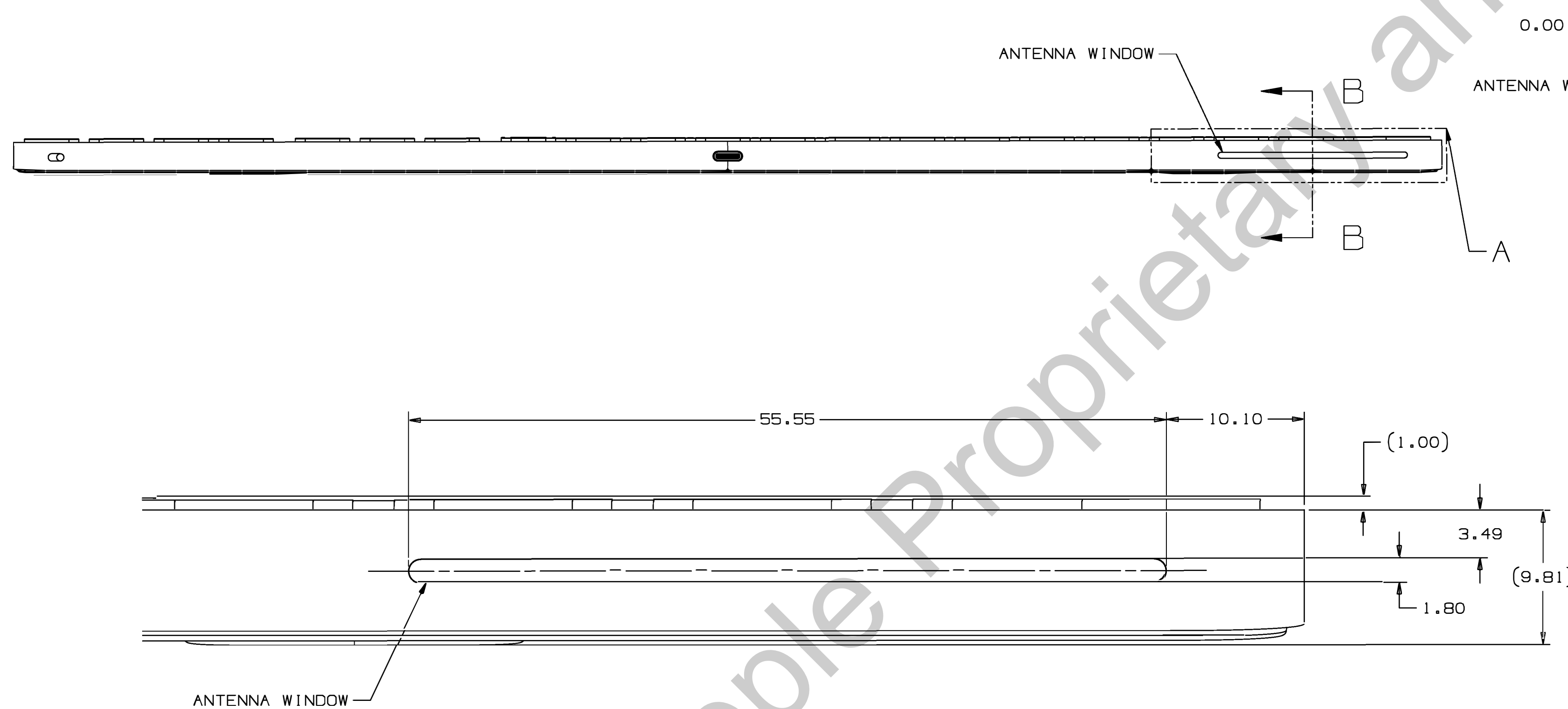


A3119 Antenna Location



ANTENNA DISTANCE TO NEAREST KEYCAP:
 SHORTEST LINEAR DISTANCE : 4.42MM
 SHORTEST EXTERNAL DISTANCE : (3.49+3.23) = 6.72MM



All measurements in millimeter (mm).

4

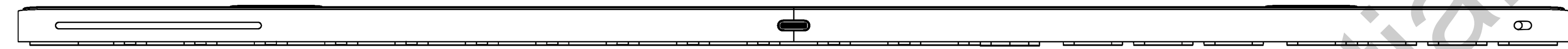
3

2

1

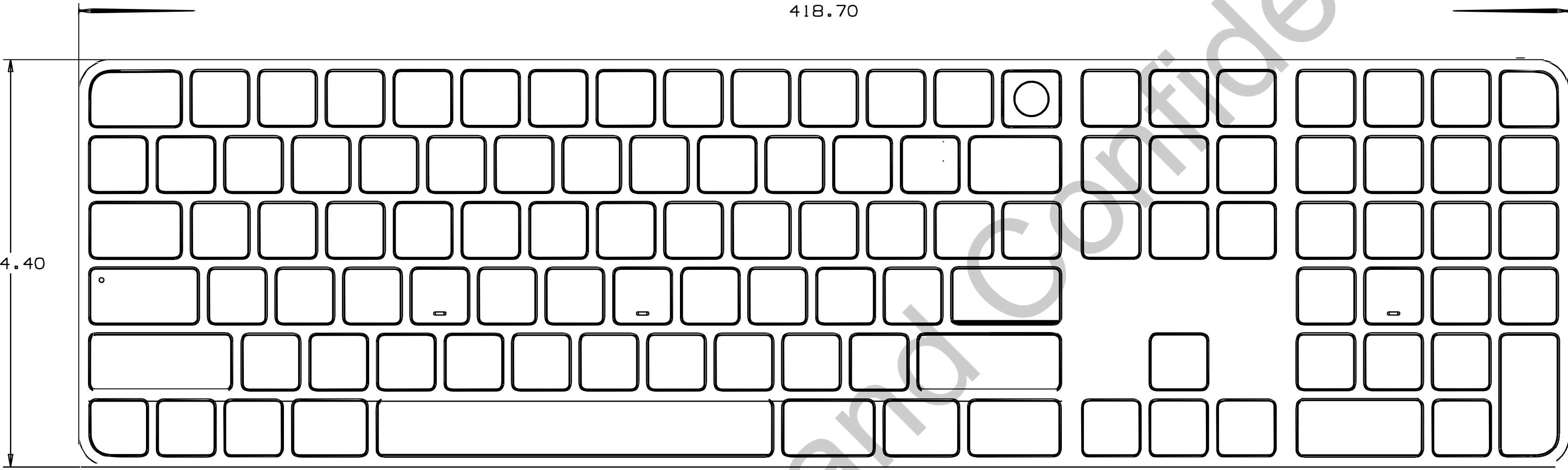
D

D



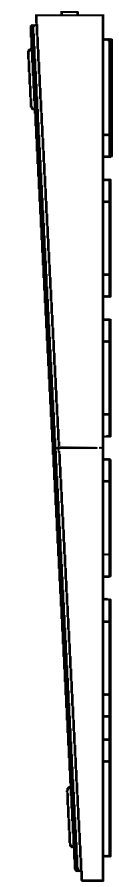
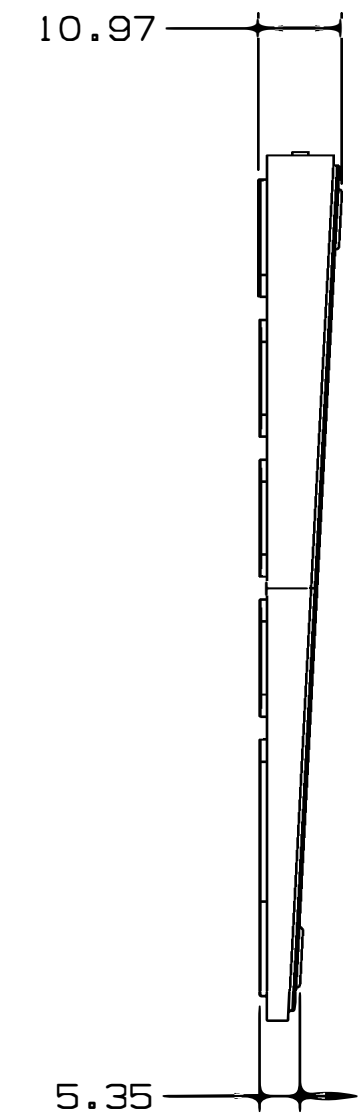
418.70

114.40



10.97

5.35

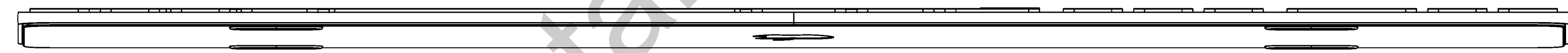


C

C

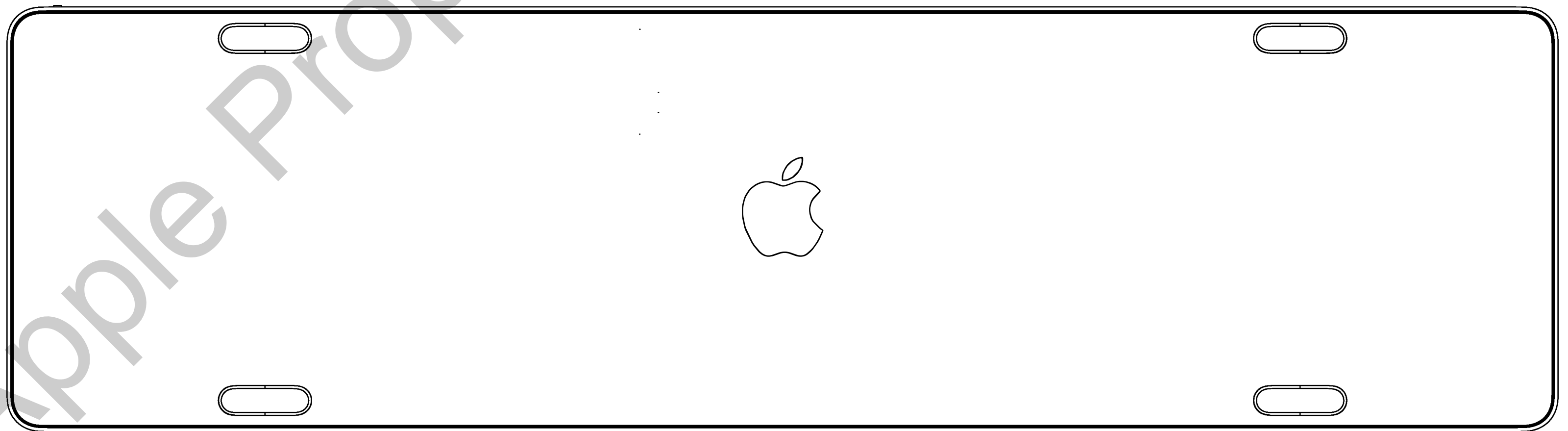
B

B



A

A



All measurements in millimeter (mm).

4

3

2