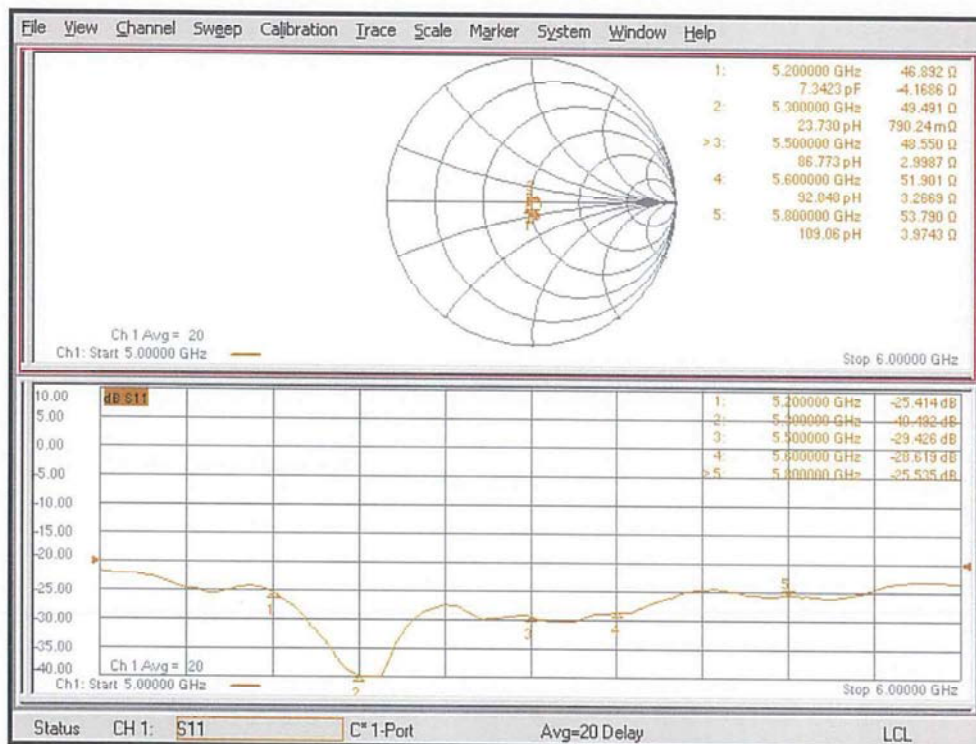




Impedance Measurement Plot for Body TSL





ANNEX C

TEST RESULTS



Measurement Report for , BACK, ISM 2.4 GHz Band, IEEE 802.15.1 Bluetooth (GFSK, DH5), Channel 39 (2441.0 MHz)

Device Under Test Properties

Model, Manufacturer	Dimensions [mm]	IMEI	DUT Type
	330.0 x 280.0 x 15.0		Laptop

Exposure Conditions

Phantom Section, TSL	Position, Test Distance [mm]	Band	Group, UID	Frequency [MHz], Channel Number	Conversion Factor	TSL Conductivity [S/m]	TSL Permittivity
Flat, HSL	BACK, 0.00	ISM 2.4 GHz Band	Bluetooth, 10032-CAA	2441.0, 39	7.76	1.86	39.9

Hardware Setup

Phantom	TSL, Measured Date	Probe, Calibration Date	DAE, Calibration Date
ELI V8.0 (20deg probe tilt) - SN:2057	HBBL-600-10000 DAK 3.5 Head 21.3 deg.C 2023-Feb-20 - SYS1 B1.prn, 2023-Feb-20	EX3DV4 - SN3759, 2022-12-15	DAE4 Sn475, 2022-12-13

Scans Setup

	Area Scan	Zoom Scan
Grid Extents [mm]	120.0 x 180.0	30.0 x 30.0 x 30.0
Grid Steps [mm]	10.0 x 10.0	5.0 x 5.0 x 1.5
Sensor Surface [mm]	3.0	1.4
Graded Grid	n/a	Yes
Grading Ratio	n/a	1.5
MAIA	Y	N/A
Surface Detection	VMS + 6p	VMS + 6p
Scan Method	Measured	Measured

Measurement Results

	Area Scan	Zoom Scan
Date	2023-02-25, 05:30	2023-02-25, 05:39
psSAR1g [W/Kg]	0.268	0.294
psSAR10g [W/Kg]	0.130	0.128
Power Drift [dB]	0.10	-0.01
Power Scaling	Disabled	Disabled
Scaling Factor [dB]		
TSL Correction	Positive only	Positive only
M2/M1 [%]		72.0
Dist 3dB Peak [mm]		7.0

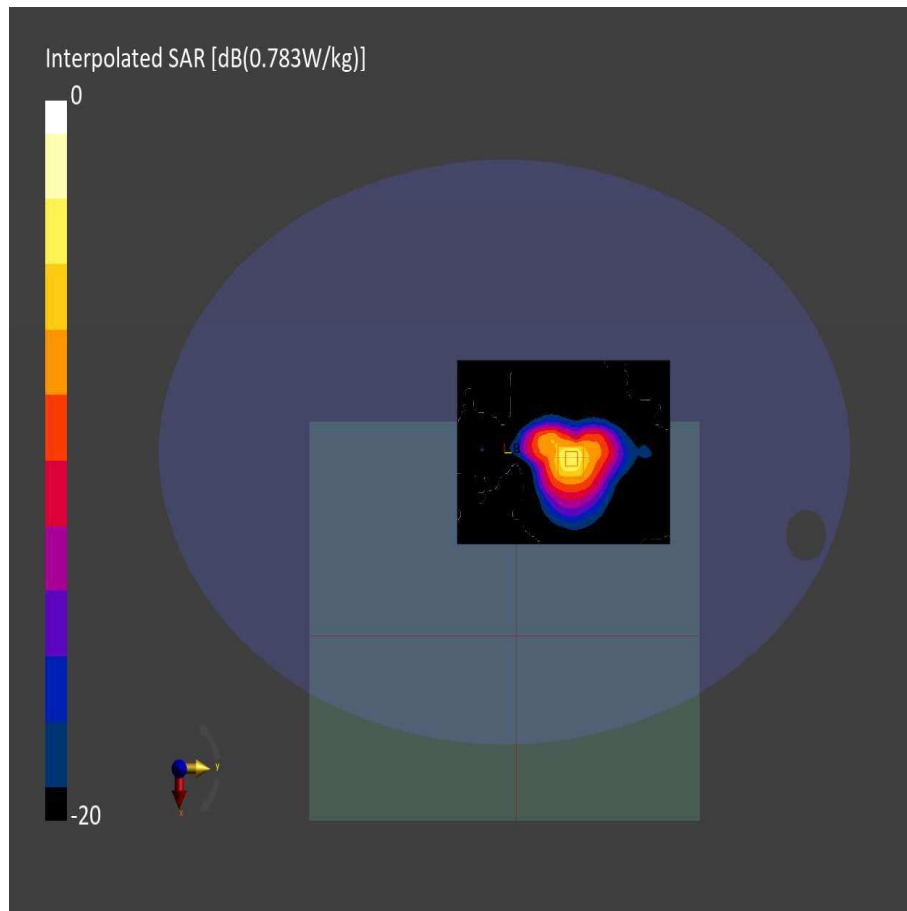


Figure C.1: SAR Body Testing Results for the A2941 at 2441.0 MHz



Measurement Report for , BACK, ISM 2.4 GHz Band, IEEE 802.15.1 Bluetooth (GFSK, DH5), Channel 39 (2441.0 MHz)

Device Under Test Properties

Model, Manufacturer	Dimensions [mm]	IMEI	DUT Type
	330.0 x 280.0 x 15.0		Laptop

Exposure Conditions

Phantom Section, TSL	Position, Test Distance [mm]	Band	Group, UID	Frequency [MHz], Channel Number	Conversion Factor	TSL Conductivity [S/m]	TSL Permittivity
Flat, HSL	BACK, 0.00	ISM 2.4 GHz Band	Bluetooth, 10032-CAA	2441.0, 39	7.76	1.86	39.9

Hardware Setup

Phantom	TSL, Measured Date	Probe, Calibration Date	DAE, Calibration Date
ELI V8.0 (20deg probe tilt) - SN:2057	HBBL-600-10000 DAK 3.5 Head 21.3 deg.C 2023-Feb-20 - SYS1 B1.prn, 2023-Feb-20	EX3DV4 - SN3759, 2022-12-15	DAE4 Sn475, 2022-12-13

Scans Setup

	Area Scan	Zoom Scan
Grid Extents [mm]	120.0 x 180.0	30.0 x 30.0 x 30.0
Grid Steps [mm]	10.0 x 10.0	5.0 x 5.0 x 1.5
Sensor Surface [mm]	3.0	1.4
Graded Grid	n/a	Yes
Grading Ratio	n/a	1.5
MAIA	Y	N/A
Surface Detection	VMS + 6p	VMS + 6p
Scan Method	Measured	Measured

Measurement Results

	Area Scan	Zoom Scan
Date	2023-02-25, 06:39	2023-02-25, 06:48
psSAR1g [W/Kg]	0.210	0.241
psSAR10g [W/Kg]	0.101	0.102
Power Drift [dB]	0.06	0.01
Power Scaling	Disabled	Disabled
Scaling Factor [dB]		
TSL Correction	Positive only	Positive only
M2/M1 [%]		72.9
Dist 3dB Peak [mm]		6.8

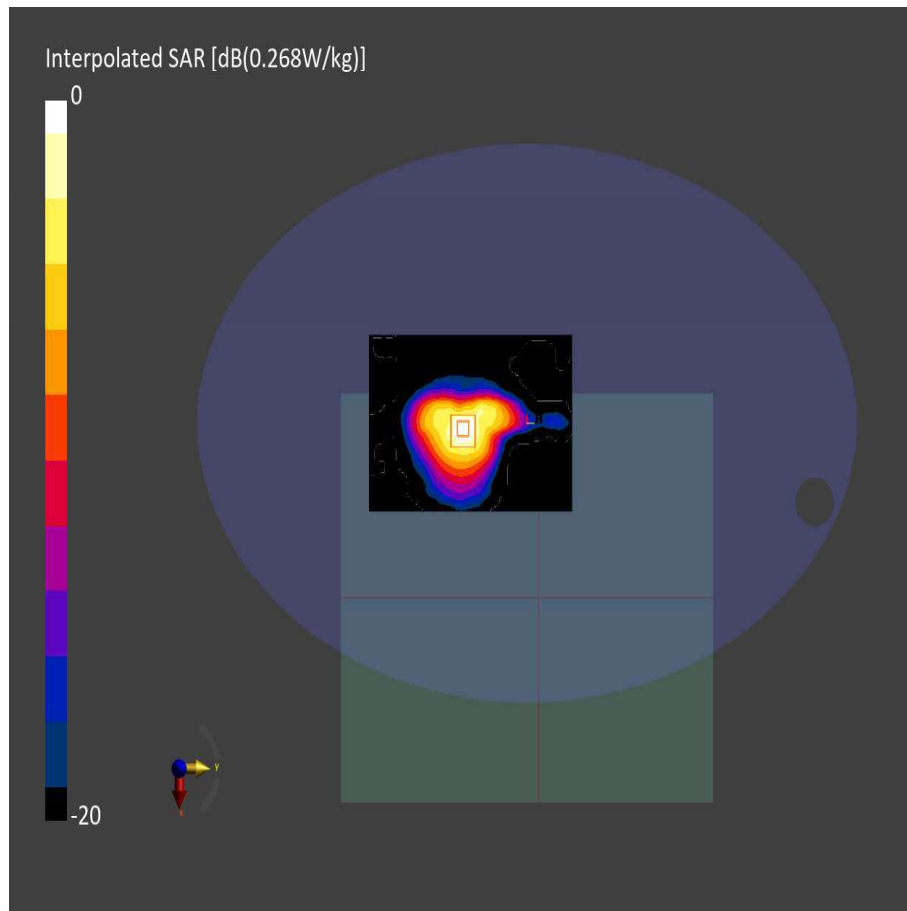


Figure C.2: SAR Body Testing Results for the A2941 at 2441.0 MHz



WLAN 2450 MHz

Measurement Report for , BACK, WLAN 2.4GHz, IEEE 802.11b WiFi 2.4 GHz (DSSS, 1 Mbps, 99pc duty cycle), Channel 6 (2437.0 MHz)

Device Under Test Properties

Model, Manufacturer	Dimensions [mm]	IMEI	DUT Type
	330.0 x 280.0 x 15.0		Phone

Exposure Conditions

Phantom Section, TSL	Position, Test Distance [mm]	Band	Group, UID	Frequency [MHz], Channel Number	Conversion Factor	TSL Conductivity [S/m]	TSL Permittivity
Flat, HSL	BACK, 0.00	WLAN 2.4GHz	WLAN, 10415-AAA	2437.0, 6	7.76	1.85	39.9

Hardware Setup

Phantom	TSL, Measured Date	Probe, Calibration Date	DAE, Calibration Date
ELI V8.0 (20deg probe tilt) - SN:2057	HBBL-600-10000 DAK 3.5 Head 21.3 deg.C 2023-Feb-20 - SYS1 B1.p.m, 2023-Feb-20	EX3DV4 - SN3759, 2022-12-15	DAE4 Sn475, 2022-12-13

Scans Setup

	Area Scan	Zoom Scan
Grid Extents [mm]	120.0 x 180.0	30.0 x 30.0 x 30.0
Grid Steps [mm]	10.0 x 10.0	5.0 x 5.0 x 1.5
Sensor Surface [mm]	3.0	1.4
Graded Grid	n/a	Yes
Grading Ratio	n/a	1.5
MAIA	N/A	N/A
Surface Detection	VMS + 6p	VMS + 6p
Scan Method	Measured	Measured

Measurement Results

	Area Scan	Zoom Scan
Date	2023-02-21, 19:28	2023-02-21, 19:37
psSAR1g [W/Kg]	0.603	0.656
psSAR10g [W/Kg]	0.284	0.291
Power Drift [dB]	0.01	0.00
Power Scaling	Disabled	Disabled
Scaling Factor [dB]		
TSL Correction	Positive only	Positive only
M2/M1 [%]		73.2
Dist 3dB Peak [mm]		7.7

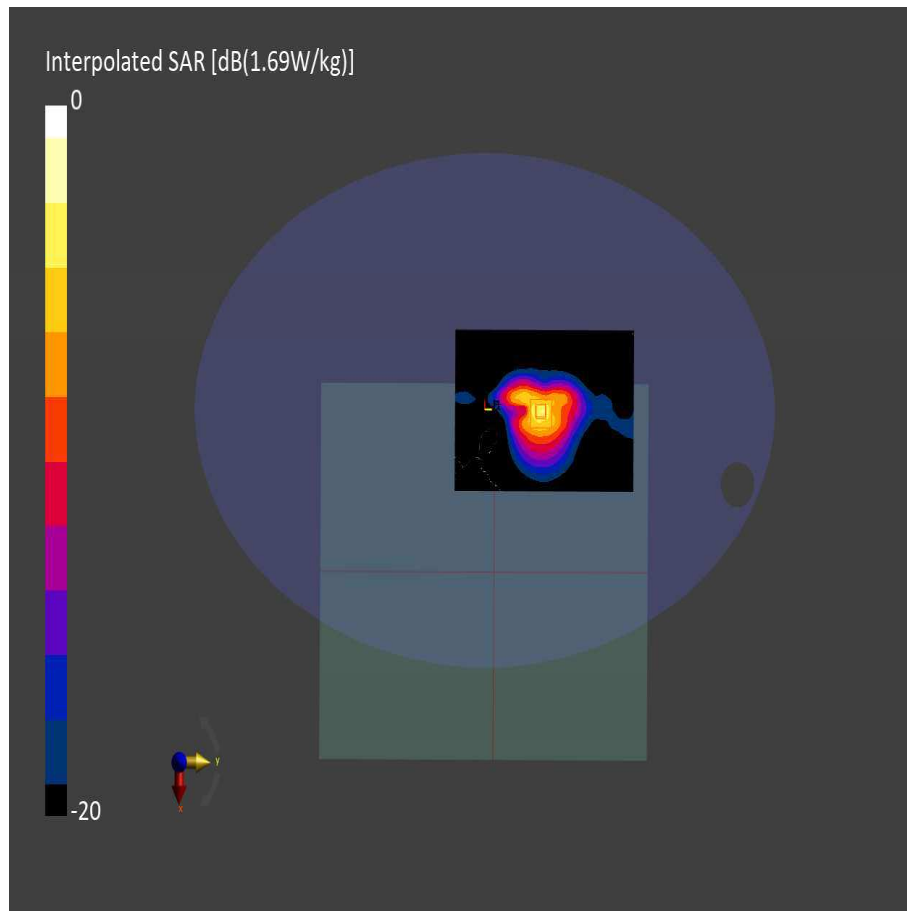


Figure C.3: SAR Body Testing Results for the A2941 at 2437.0 MHz



Measurement Report for , BACK, WLAN 2.4GHz, IEEE 802.11b WiFi 2.4 GHz (DSSS, 1 Mbps, 99pc duty cycle), Channel 11 (2462.0 MHz)

Device Under Test Properties

Model, Manufacturer	Dimensions [mm]	IMEI	DUT Type
	330.0 x 280.0 x 15.0		Phone

Exposure Conditions

Phantom Section, TSL	Position, Test Distance [mm]	Band	Group, UID	Frequency [MHz], Channel Number	Conversion Factor	TSL Conductivity [S/m]	TSL Permittivity
Flat, HSL	BACK, 0.00	WLAN 2.4GHz	WLAN, 10415-AAA	2462.0, 11	7.76	1.88	39.8

Hardware Setup

Phantom	TSL, Measured Date	Probe, Calibration Date	DAE, Calibration Date
ELI V8.0 (20deg probe tilt) - SN:2057	HBBL-600-10000 DAK 3.5 Head 21.3 deg.C 2023-Feb-20 - SYS1 B1.prn, 2023-Feb-20	EX3DV4 - SN3759, 2022-12-15	DAE4 Sn475, 2022-12-13

Scans Setup

	Area Scan	Zoom Scan
Grid Extents [mm]	120.0 x 180.0	30.0 x 30.0 x 30.0
Grid Steps [mm]	10.0 x 10.0	5.0 x 5.0 x 1.5
Sensor Surface [mm]	3.0	1.4
Graded Grid	n/a	Yes
Grading Ratio	n/a	1.5
MAIA	N/A	N/A
Surface Detection	VMS + 6p	VMS + 6p
Scan Method	Measured	Measured

Measurement Results

	Area Scan	Zoom Scan
Date	2023-02-21, 22:37	2023-02-21, 22:45
psSAR1g [W/Kg]	0.668	0.732
psSAR10g [W/Kg]	0.302	0.315
Power Drift [dB]	0.04	0.06
Power Scaling	Disabled	Disabled
Scaling Factor [dB]		
TSL Correction	Positive only	Positive only
M2/M1 [%]		72.6
Dist 3dB Peak [mm]		8.0

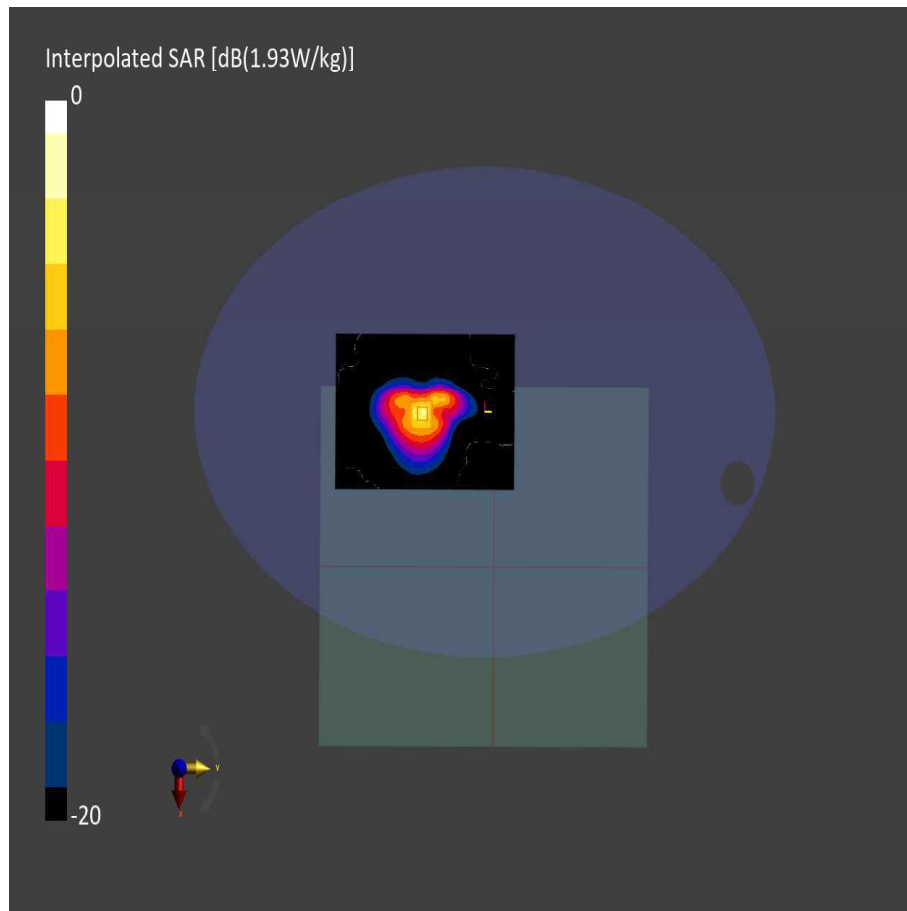


Figure C.4: SAR Body Testing Results for the A2941 at 2462.0 MHz



Measurement Report for , BACK, WLAN 2.4GHz, IEEE 802.11n (HT Greenfield, 6.5 Mbps, BPSK), Channel 10 (2457.0 MHz)

Device Under Test Properties

Model, Manufacturer	Dimensions [mm]	IMEI	DUT Type
	330.0 x 280.0 x 15.0		Laptop

Exposure Conditions

Phantom Section, TSL	Position, Test Distance [mm]	Band	Group, UID	Frequency [MHz], Channel Number	Conversion Factor	TSL Conductivity [S/m]	TSL Permittivity
Flat, HSL	BACK, 0.00	WLAN 2.4GHz	WLAN, 10193-CAD	, 10	7.76	1.87	39.8

Hardware Setup

Phantom	TSL, Measured Date	Probe, Calibration Date	DAE, Calibration Date
ELI V8.0 (20deg probe tilt) - SN:2057	HBBL-600-10000 DAK 3.5 Head 21.3 deg.C 2023-Feb-20 - SYS1 B1.prn, 2023-Feb-20	EX3DV4 - SN3759, 2022-12-15	DAE4 Sn475, 2022-12-13

Scans Setup

	Area Scan	Zoom Scan	Zoom Scan
Grid Extents [mm]	x 300.0	30.0 x 30.0 x 30.0	30.0 x 30.0 x 30.0
Grid Steps [mm]	10.0 x 10.0	5.0 x 5.0 x 1.5	5.0 x 5.0 x 1.5
Sensor Surface [mm]	3.0	1.4	1.4
Graded Grid	n/a	Yes	Yes
Grading Ratio	n/a	1.5	1.5
MAIA	N/A	N/A	N/A
Surface Detection	VMS + 6p	VMS + 6p	VMS + 6p
Scan Method	Measured	Measured	Measured

Measurement Results

	Area Scan	Zoom Scan	Zoom Scan
Date	2023-02-22, 03:34	2023-02-22, 03:42	2023-02-22, 03:51
psSAR1g [W/Kg]	0.776	0.862	0.753
psSAR10g [W/Kg]	0.371	0.363	0.310
Power Drift [dB]	-0.01	-0.00	-0.00
Power Scaling	Disabled	Disabled	Disabled
Scaling Factor [dB]			
TSL Correction	Positive only	Positive only	Positive only
M2/M1 [%]		70.3	70.2
Dist 3dB Peak [mm]		6.0	6.0

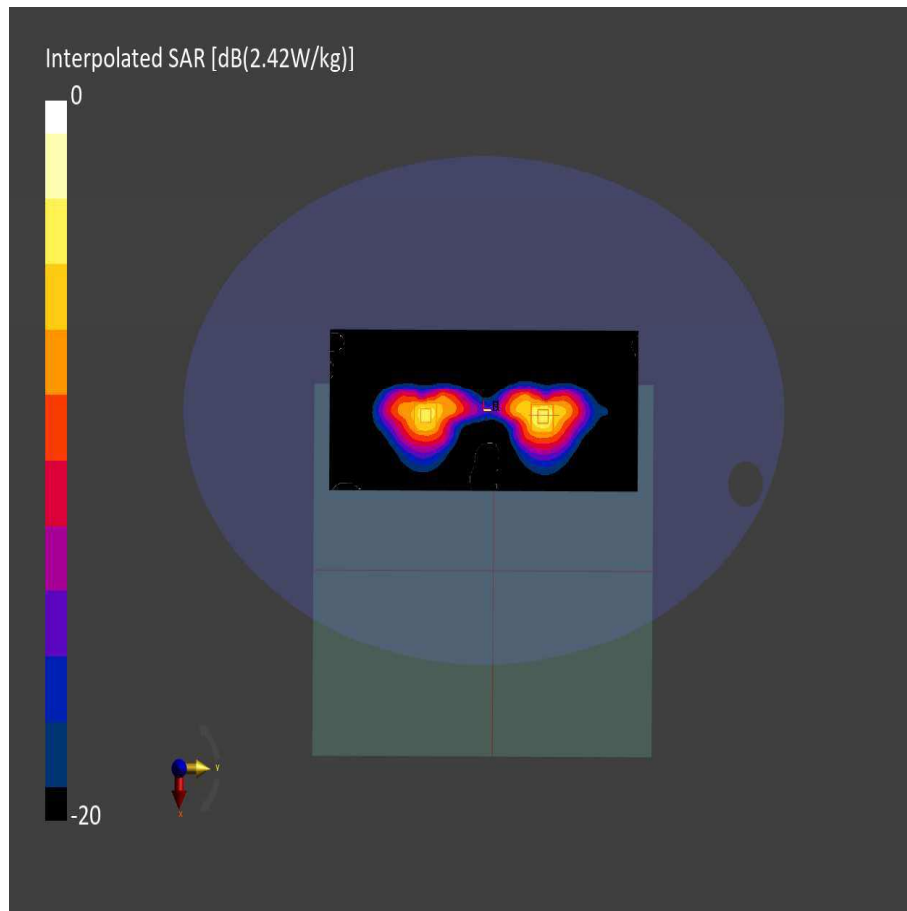


Figure C.5: SAR Body Testing Results for the A2941 at 2457.0 MHz



WLAN 5500 MHz

Measurement Report for , BACK, WLAN 5GHz, IEEE 802.11n (HT Greenfield, 13.5 Mbps, BPSK), Channel 46 (5230.0 MHz)

Device Under Test Properties

Model, Manufacturer	Dimensions [mm]	IMEI	DUT Type
	330.0 x 280.0 x 15.0		Laptop

Exposure Conditions

Phantom Section, TSL	Position, Test Distance [mm]	Band	Group, UID	Frequency [MHz], Channel Number	Conversion Factor	TSL Conductivity [S/m]	TSL Permittivity
Flat, HSL	BACK, 0.00	WLAN 5GHz	WLAN, 10114-CAD	5230.0, 46	5.75	4.56	34.5

Hardware Setup

Phantom	TSL, Measured Date	Probe, Calibration Date	DAE, Calibration Date
ELI V8.0 (20deg probe tilt) - SN:2057	HBBL-600-10000 DAK 3.5 Head 21.3 deg.C 2023-Feb-20 - SYS1 B1.prn, 2023-Feb-20	EX3DV4 - SN3759, 2022-12-15	DAE4 Sn475, 2022-12-13

Scans Setup

	Area Scan	Zoom Scan
Grid Extents [mm]	120.0 x 180.0	22.0 x 22.0 x 22.0
Grid Steps [mm]	10.0 x 10.0	4.0 x 4.0 x 1.4
Sensor Surface [mm]	3.0	1.4
Graded Grid	n/a	Yes
Grading Ratio	n/a	1.4
MAIA	Y	N/A
Surface Detection	VMS + 6p	VMS + 6p
Scan Method	Measured	Measured

Measurement Results

	Area Scan	Zoom Scan
Date	2023-02-22, 06:25	2023-02-22, 06:33
psSAR1g [W/Kg]	0.461	0.501
psSAR10g [W/Kg]	0.166	0.167
Power Drift [dB]	0.06	0.03
Power Scaling	Disabled	Disabled
Scaling Factor [dB]		
TSL Correction	No correction	No correction
M2/M1 [%]		61.1
Dist 3dB Peak [mm]		6.4

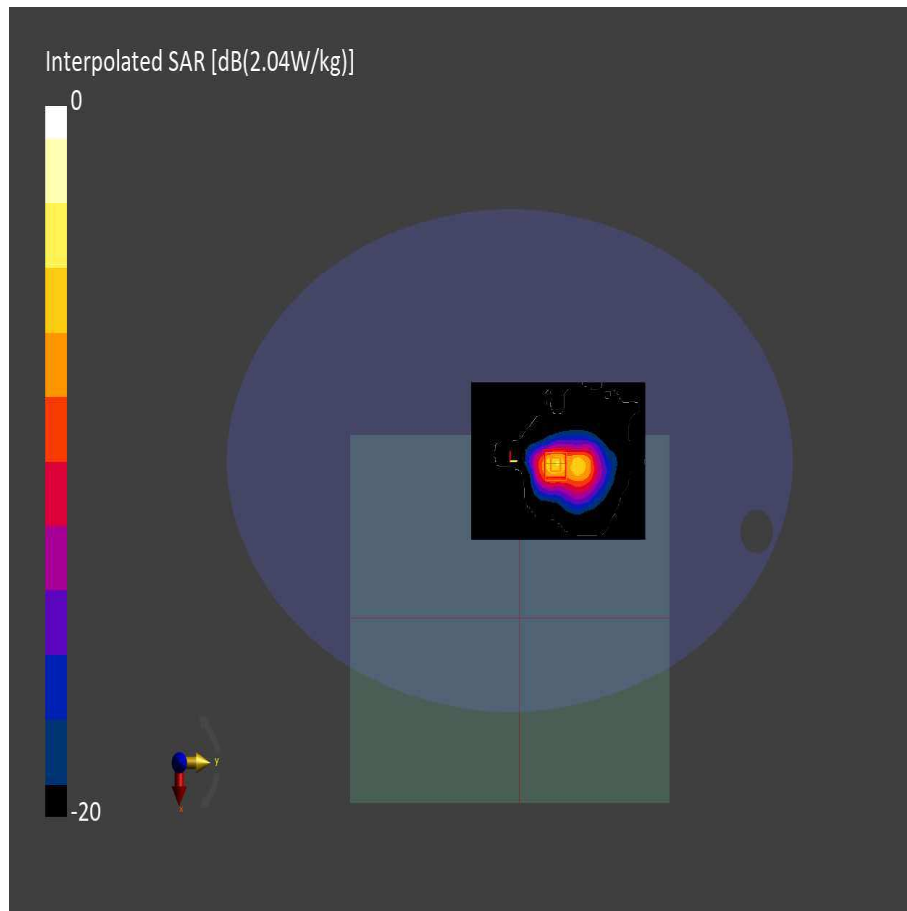


Figure C.6: SAR Body Testing Results for the A2941 at 5230.0 MHz



Measurement Report for , BACK, WLAN 5GHz, IEEE 802.11n (HT Greenfield, 13.5 Mbps, BPSK), Channel 38 (5190.0 MHz)

Device Under Test Properties

Model, Manufacturer	Dimensions [mm]	IMEI	DUT Type
	330.0 x 280.0 x 15.0		Laptop

Exposure Conditions

Phantom Section, TSL	Position, Test Distance [mm]	Band	Group, UID	Frequency [MHz], Channel Number	Conversion Factor	TSL Conductivity [S/m]	TSL Permittivity
Flat, HSL	BACK, 0.00	WLAN 5GHz	WLAN, 10114-CAD	5190.0, 38	5.75	4.52	34.5

Hardware Setup

Phantom	TSL, Measured Date	Probe, Calibration Date	DAE, Calibration Date
ELI V8.0 (20deg probe tilt) - SN:2057	HBBL-600-10000 DAK 3.5 Head 21.3 deg.C 2023-Feb-20 - SYS1 B1.prn, 2023-Feb-20	EX3DV4 - SN3759, 2022-12-15	DAE4 Sn475, 2022-12-13

Scans Setup

	Area Scan	Zoom Scan
Grid Extents [mm]	120.0 x 180.0	22.0 x 22.0 x 22.0
Grid Steps [mm]	10.0 x 10.0	4.0 x 4.0 x 1.4
Sensor Surface [mm]	3.0	1.4
Graded Grid	n/a	Yes
Grading Ratio	n/a	1.4
MAIA	Y	Y
Surface Detection	VMS + 6p	VMS + 6p
Scan Method	Measured	Measured

Measurement Results

	Area Scan	Zoom Scan
Date	2023-02-22, 07:34	2023-02-22, 07:42
psSAR1g [W/Kg]	0.299	0.334
psSAR10g [W/Kg]	0.119	0.122
Power Drift [dB]	0.06	0.06
Power Scaling	Disabled	Disabled
Scaling Factor [dB]		
TSL Correction	No correction	No correction
M2/M1 [%]		63.2
Dist 3dB Peak [mm]		8.4

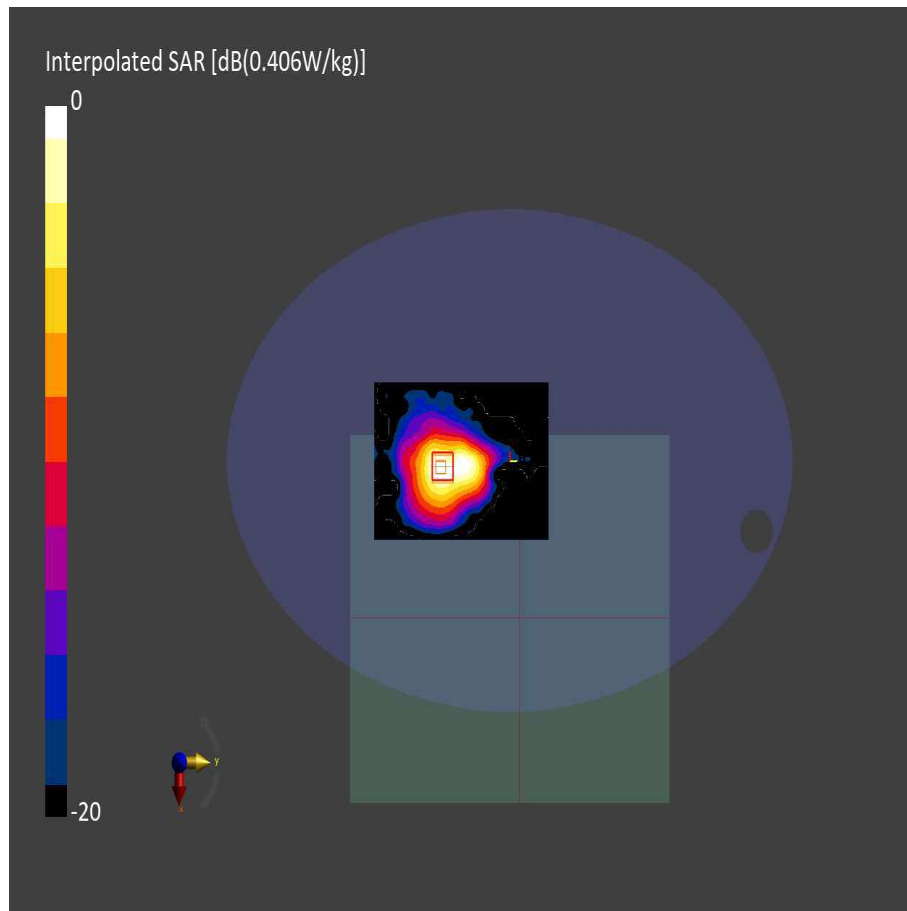


Figure C.7: SAR Body Testing Results for the A2941 at 5190.0 MHz



Measurement Report for , BACK, WLAN 5GHz, IEEE 802.11n (HT Greenfield, 13.5 Mbps, BPSK), Channel 46 (5230.0 MHz)

Device Under Test Properties

Model, Manufacturer	Dimensions [mm]	IMEI	DUT Type
	330.0 x 280.0 x 15.0		Laptop

Exposure Conditions

Phantom Section, TSL	Position, Test Distance [mm]	Band	Group, UID	Frequency [MHz], Channel Number	Conversion Factor	TSL Conductivity [S/m]	TSL Permittivity
Flat, HSL	BACK, 0.00	WLAN 5GHz	WLAN, 10114-CAD	, 46	5.75	4.56	34.5

Hardware Setup

Phantom	TSL, Measured Date	Probe, Calibration Date	DAE, Calibration Date
ELI V8.0 (20deg probe tilt) - SN:2057	HBBL-600-10000 DAK 3.5 Head 21.3 deg.C 2023-Feb-20 - SYS1 B1.prn, 2023-Feb-20	EX3DV4 - SN3759, 2022-12-15	DAE4 Sn475, 2022-12-13

Scans Setup

	Area Scan	Zoom Scan	Zoom Scan
Grid Extents [mm]	x 300.0	22.0 x 22.0 x 22.0	22.0 x 22.0 x 22.0
Grid Steps [mm]	10.0 x 10.0	4.0 x 4.0 x 1.4	4.0 x 4.0 x 1.4
Sensor Surface [mm]	3.0	1.4	1.4
Graded Grid	n/a	Yes	Yes
Grading Ratio	n/a	1.4	1.4
MAIA	Y	Y	Y
Surface Detection	VMS + 6p	VMS + 6p	VMS + 6p
Scan Method	Measured	Measured	Measured

Measurement Results

	Area Scan	Zoom Scan	Zoom Scan
Date	2023-02-22, 14:12	2023-02-22, 14:23	2023-02-22, 14:36
psSAR1g [W/Kg]	0.334	0.367	0.232
psSAR10g [W/Kg]	0.120	0.124	0.085
Power Drift [dB]	0.01	0.05	-0.00
Power Scaling	Disabled	Disabled	Disabled
Scaling Factor [dB]			
TSL Correction	Positive only	Positive only	Positive only
M2/M1 [%]		61.1	63.2
Dist 3dB Peak [mm]		7.2	8.4

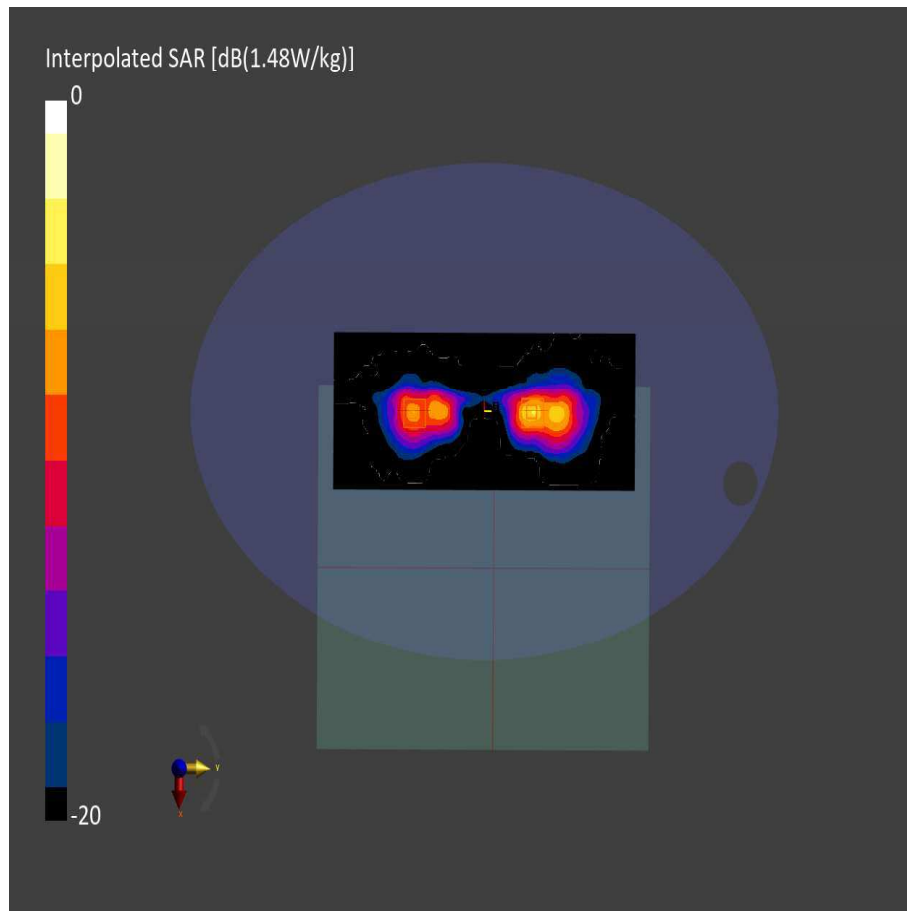


Figure C.8: SAR Body Testing Results for the A2941 at 5230.0 MHz



Measurement Report for , BACK, WLAN 5GHz, IEEE 802.11ax (80MHz, MCS0, 99pc duty cycle), Channel 42 (5210.0 MHz)

Device Under Test Properties

Model, Manufacturer	Dimensions [mm]	IMEI	DUT Type
	330.0 x 280.0 x 15.0		Laptop

Exposure Conditions

Phantom Section, TSL	Position, Test Distance [mm]	Band	Group, UID	Frequency [MHz], Channel Number	Conversion Factor	TSL Conductivity [S/m]	TSL Permittivity
Flat, HSL	BACK, 0.00	WLAN 5GHz	WLAN, 10731-AAC	5210.0, 42	5.75	4.61	34.0

Hardware Setup

Phantom	TSL, Measured Date	Probe, Calibration Date	DAE, Calibration Date
ELI V8.0 (20deg probe tilt) - SN:2057	HBBL-600-10000 DAK 3.5 Head 21 deg.C 2023-Mar-02 SYS1 B1.prn, 2023-Mar-06	EX3DV4 - SN3759, 2022-12-15	DAE4 Sn475, 2022-12-13

Scans Setup

	Area Scan	Zoom Scan
Grid Extents [mm]	120.0 x 180.0	22.0 x 22.0 x 22.0
Grid Steps [mm]	10.0 x 10.0	4.0 x 4.0 x 1.4
Sensor Surface [mm]	3.0	1.4
Graded Grid	n/a	Yes
Grading Ratio	n/a	1.4
MAIA	Y	Y
Surface Detection	VMS + 6p	VMS + 6p
Scan Method	Measured	Measured

Measurement Results

	Area Scan	Zoom Scan
Date	2023-03-07, 03:29	2023-03-07, 03:40
psSAR1g [W/Kg]	0.349	0.374
psSAR10g [W/Kg]	0.135	0.136
Power Drift [dB]	0.04	0.03
Power Scaling	Disabled	Disabled
Scaling Factor [dB]		
TSL Correction	Positive only	Positive only
M2/M1 [%]		61.8
Dist 3dB Peak [mm]		8.7

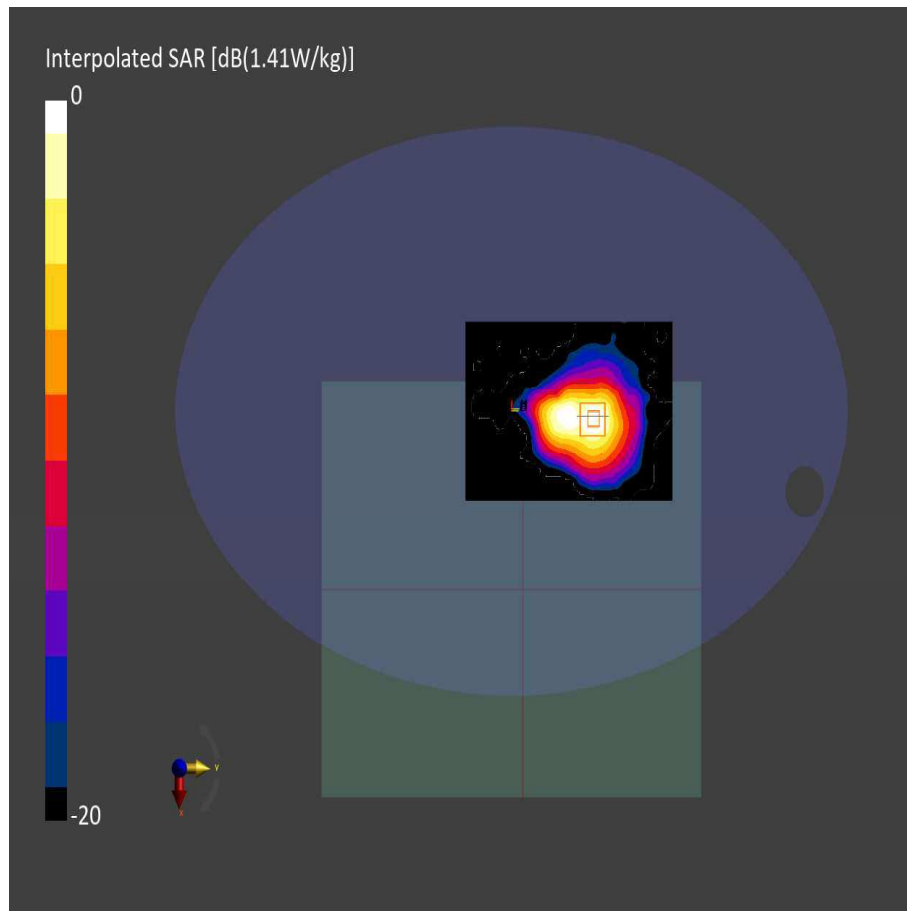


Figure C.9: SAR Body Testing Results for the A2941 at 5210.0 MHz



Measurement Report for , BACK, WLAN 5GHz, IEEE 802.11ax (80MHz, MCS0, 99pc duty cycle), Channel 42 (5210.0 MHz)

Device Under Test Properties

Model, Manufacturer	Dimensions [mm]	IMEI	DUT Type
	330.0 x 280.0 x 15.0		Laptop

Exposure Conditions

Phantom Section, TSL	Position, Test Distance [mm]	Band	Group, UID	Frequency [MHz], Channel Number	Conversion Factor	TSL Conductivity [S/m]	TSL Permittivity
Flat, HSL	BACK, 0.00	WLAN 5GHz	WLAN, 10731-AAC	5210.0, 42	5.75	4.61	34.0

Hardware Setup

Phantom	TSL, Measured Date	Probe, Calibration Date	DAE, Calibration Date
ELI V8.0 (20deg probe tilt) - SN:2057	HBBL-600-10000 DAK 3.5 Head 21 deg.C 2023-Mar-02 SYS1 B1.prn, 2023-Mar-06	EX3DV4 - SN3759, 2022-12-15	DAE4 Sn475, 2022-12-13

Scans Setup

	Area Scan	Zoom Scan
Grid Extents [mm]	120.0 x 180.0	22.0 x 22.0 x 22.0
Grid Steps [mm]	10.0 x 10.0	4.0 x 4.0 x 1.4
Sensor Surface [mm]	3.0	1.4
Graded Grid	n/a	Yes
Grading Ratio	n/a	1.4
MAIA	Y	Y
Surface Detection	VMS + 6p	VMS + 6p
Scan Method	Measured	Measured

Measurement Results

	Area Scan	Zoom Scan
Date	2023-03-07, 04:28	2023-03-07, 04:40
psSAR1g [W/Kg]	0.255	0.284
psSAR10g [W/Kg]	0.099	0.101
Power Drift [dB]	0.03	0.05
Power Scaling	Disabled	Disabled
Scaling Factor [dB]		
TSL Correction	Positive only	Positive only
M2/M1 [%]		61.7
Dist 3dB Peak [mm]		7.3

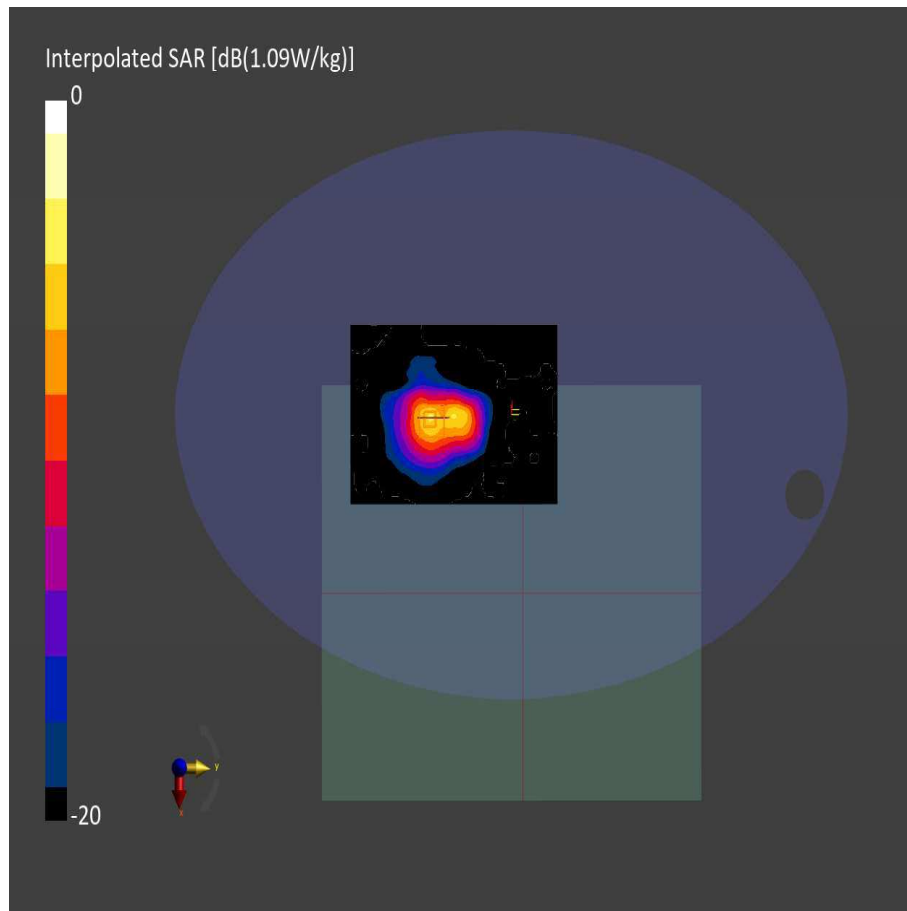


Figure C.10: SAR Body Testing Results for the A2941 at 5210.0 MHz



Measurement Report for , BACK, WLAN 5GHz, IEEE 802.11ac WiFi (80MHz, MCS0, 99pc duty cycle), Channel 42 (5210.0 MHz)

Device Under Test Properties

Model, Manufacturer	Dimensions [mm]	IMEI	DUT Type
	330.0 x 280.0 x 15.0		Laptop

Exposure Conditions

Phantom Section, TSL	Position, Test Distance [mm]	Band	Group, UID	Frequency [MHz], Channel Number	Conversion Factor	TSL Conductivity [S/m]	TSL Permittivity
Flat, HSL	BACK, 0.00	WLAN 5GHz	WLAN, 10544-AAC	, 42	5.75	4.61	34.0

Hardware Setup

Phantom	TSL, Measured Date	Probe, Calibration Date	DAE, Calibration Date
ELI V8.0 (20deg probe tilt) - SN:2057	HBBL-600-10000 DAK 3.5 Head 21 deg.C 2023-Mar-02 SYS1 B1.prn, 2023-Mar-06	EX3DV4 - SN3759, 2022-12-15	DAE4 Sn475, 2022-12-13

Scans Setup

	Area Scan	Zoom Scan	Zoom Scan
Grid Extents [mm]	x 280.0	22.0 x 22.0 x 22.0	22.0 x 22.0 x 22.0
Grid Steps [mm]	10.0 x 10.0	4.0 x 4.0 x 1.4	4.0 x 4.0 x 1.4
Sensor Surface [mm]	3.0	1.4	1.4
Graded Grid	n/a	Yes	Yes
Grading Ratio	n/a	1.4	1.4
MAIA	Y	Y	Y
Surface Detection	VMS + 6p	VMS + 6p	VMS + 6p
Scan Method	Measured	Measured	Measured

Measurement Results

	Area Scan	Zoom Scan	Zoom Scan
Date	2023-03-07, 06:23	2023-03-07, 06:34	2023-03-07, 06:47
psSAR1g [W/Kg]	0.185	0.188	0.144
psSAR10g [W/Kg]	0.072	0.068	0.049
Power Drift [dB]	-0.01	0.13	0.01
Power Scaling	Disabled	Disabled	Disabled
Scaling Factor [dB]			
TSL Correction	Positive only	Positive only	Positive only
M2/M1 [%]		61.8	60.5
Dist 3dB Peak [mm]		8.7	7.3

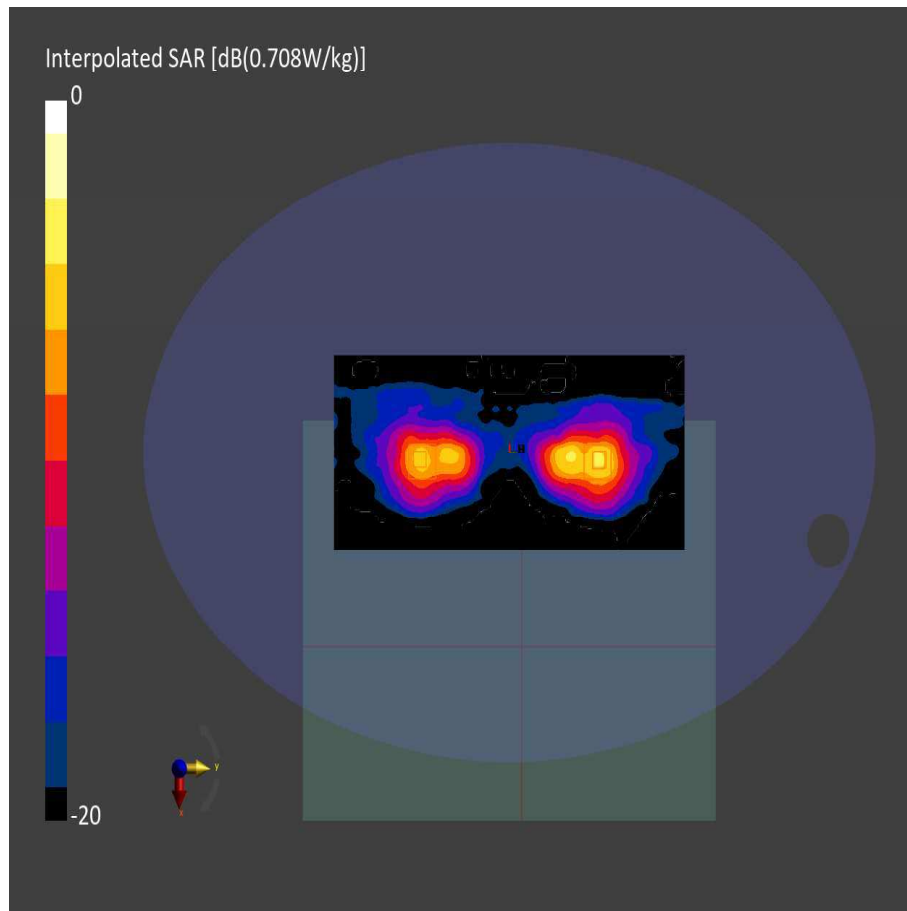


Figure C.11: SAR Body Testing Results for the A2941 at 5210.0 MHz



Measurement Report for , BACK, WLAN 5GHz, IEEE 802.11n (HT Greenfield, 13.5 Mbps, BPSK), Channel 62 (5310.0 MHz)

Device Under Test Properties

Model, Manufacturer	Dimensions [mm]	IMEI	DUT Type
	330.0 x 280.0 x 15.0		Laptop

Exposure Conditions

Phantom Section, TSL	Position, Test Distance [mm]	Band	Group, UID	Frequency [MHz], Channel Number	Conversion Factor	TSL Conductivity [S/m]	TSL Permittivity
Flat, HSL	BACK, 0.00	WLAN 5GHz	WLAN, 10114-CAD	5310.0, 62	5.58	4.64	34.3

Hardware Setup

Phantom	TSL, Measured Date	Probe, Calibration Date	DAE, Calibration Date
ELI V8.0 (20deg probe tilt) - SN:2057	HBBL-600-10000 DAK 3.5 Head 21.3 deg.C 2023-Feb-20 - SYS1 B1.prn, 2023-Feb-20	EX3DV4 - SN3759, 2022-12-15	DAE4 Sn475, 2022-12-13

Scans Setup

	Area Scan	Zoom Scan
Grid Extents [mm]	120.0 x 180.0	22.0 x 22.0 x 22.0
Grid Steps [mm]	10.0 x 10.0	4.0 x 4.0 x 1.4
Sensor Surface [mm]	3.0	1.4
Graded Grid	n/a	Yes
Grading Ratio	n/a	1.4
MAIA	Y	N/A
Surface Detection	VMS + 6p	VMS + 6p
Scan Method	Measured	Measured

Measurement Results

	Area Scan	Zoom Scan
Date	2023-02-23, 13:03	2023-02-23, 13:13
psSAR1g [W/Kg]	0.384	0.426
psSAR10g [W/Kg]	0.134	0.140
Power Drift [dB]	-0.06	-0.05
Power Scaling	Disabled	Disabled
Scaling Factor [dB]		
TSL Correction	Positive only	Positive only
M2/M1 [%]		60.3
Dist 3dB Peak [mm]		6.6

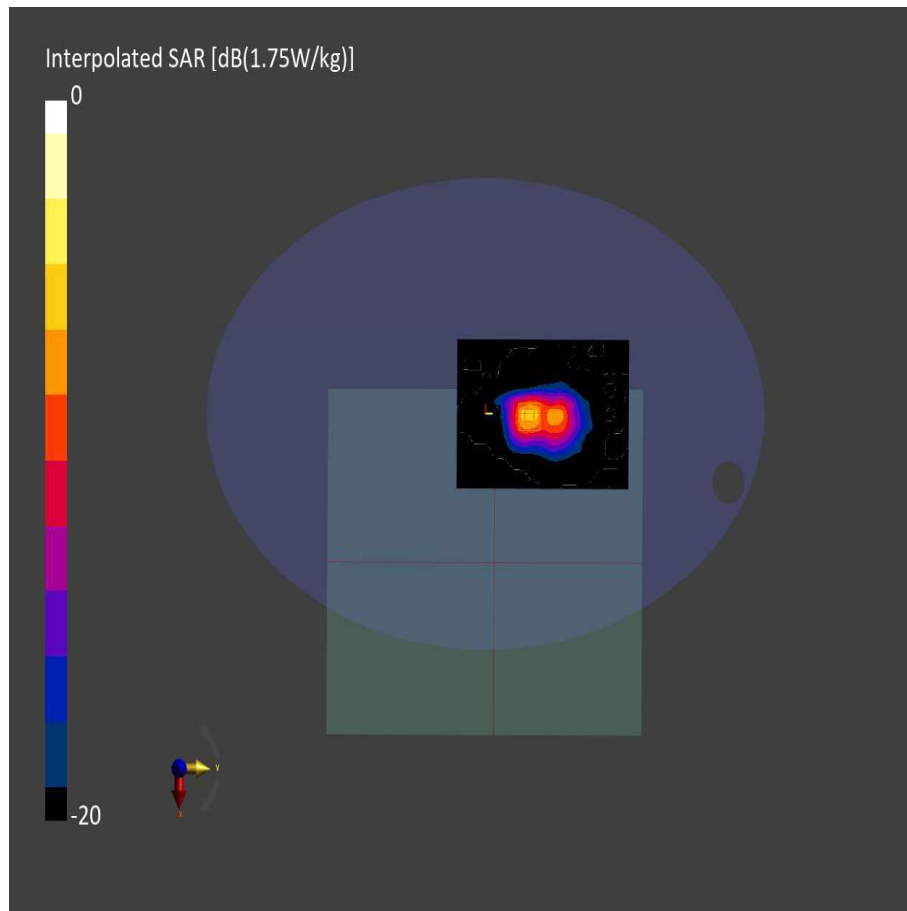


Figure C.12: SAR Body Testing Results for the A2941 at 5310.0 MHz



Measurement Report for , BACK, WLAN 5GHz, IEEE 802.11n (HT Greenfield, 13.5 Mbps, BPSK), Channel 62 (5310.0 MHz)

Device Under Test Properties

Model, Manufacturer	Dimensions [mm]	IMEI	DUT Type
	330.0 x 280.0 x 15.0		Laptop

Exposure Conditions

Phantom Section, TSL	Position, Test Distance [mm]	Band	Group, UID	Frequency [MHz], Channel Number	Conversion Factor	TSL Conductivity [S/m]	TSL Permittivity
Flat, HSL	BACK, 0.00	WLAN 5GHz	WLAN, 10114-CAD	5310.0, 62	5.58	4.64	34.3

Hardware Setup

Phantom	TSL, Measured Date	Probe, Calibration Date	DAE, Calibration Date
ELI V8.0 (20deg probe tilt) - SN:2057	HBBL-600-10000 DAK 3.5 Head 21.3 deg.C 2023-Feb-20 - SYS1 B1.prn, 2023-Feb-20	EX3DV4 - SN3759, 2022-12-15	DAE4 Sn475, 2022-12-13

Scans Setup

	Area Scan	Zoom Scan
Grid Extents [mm]	120.0 x 180.0	22.0 x 22.0 x 22.0
Grid Steps [mm]	10.0 x 10.0	4.0 x 4.0 x 1.4
Sensor Surface [mm]	3.0	1.4
Graded Grid	n/a	Yes
Grading Ratio	n/a	1.4
MAIA	Y	N/A
Surface Detection	VMS + 6p	VMS + 6p
Scan Method	Measured	Measured

Measurement Results

	Area Scan	Zoom Scan
Date	2023-02-23, 15:22	2023-02-23, 15:31
psSAR1g [W/Kg]	0.377	0.426
psSAR10g [W/Kg]	0.135	0.140
Power Drift [dB]	0.03	0.05
Power Scaling	Disabled	Disabled
Scaling Factor [dB]		
TSL Correction	Positive only	Positive only
M2/M1 [%]		60.4
Dist 3dB Peak [mm]		6.5

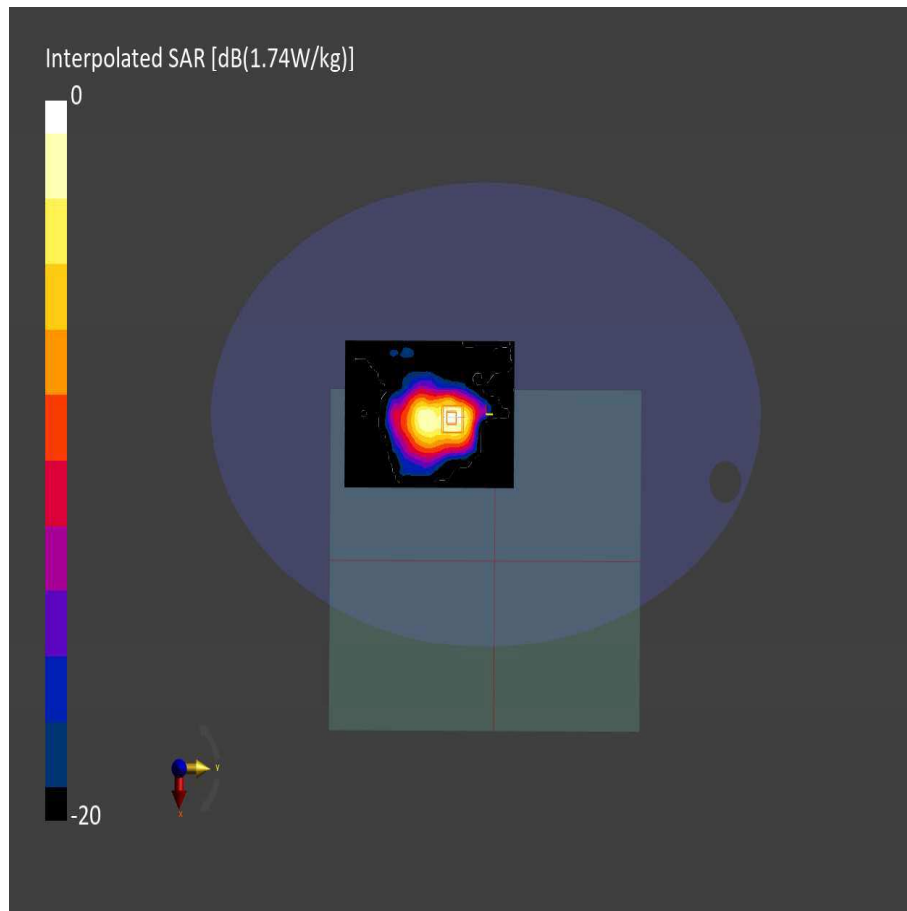


Figure C.13: SAR Body Testing Results for the A2941 at 5310.0 MHz



Measurement Report for , BACK, WLAN 5GHz, IEEE 802.11n (HT Greenfield, 13.5 Mbps, BPSK), Channel 62 (5310.0 MHz)

Device Under Test Properties

Model, Manufacturer	Dimensions [mm]	IMEI	DUT Type
	330.0 x 280.0 x 15.0		Laptop

Exposure Conditions

Phantom Section, TSL	Position, Test Distance [mm]	Band	Group, UID	Frequency [MHz], Channel Number	Conversion Factor	TSL Conductivity [S/m]	TSL Permittivity
Flat, HSL	BACK, 0.00	WLAN 5GHz	WLAN, 10114-CAD	, 62	5.58	4.64	34.3

Hardware Setup

Phantom	TSL, Measured Date	Probe, Calibration Date	DAE, Calibration Date
ELI V8.0 (20deg probe tilt) - SN:2057	HBBL-600-10000 DAK 3.5 Head 21.3 deg.C 2023-Feb-20 - SYS1 B1.prn, 2023-Feb-20	EX3DV4 - SN3759, 2022-12-15	DAE4 Sn475, 2022-12-13

Scans Setup

	Area Scan	Zoom Scan	Zoom Scan
Grid Extents [mm]	x 280.0	22.0 x 22.0 x 22.0	22.0 x 22.0 x 22.0
Grid Steps [mm]	10.0 x 10.0	4.0 x 4.0 x 1.4	4.0 x 4.0 x 1.4
Sensor Surface [mm]	3.0	1.4	1.4
Graded Grid	n/a	Yes	Yes
Grading Ratio	n/a	1.4	1.4
MAIA	Y	N/A	N/A
Surface Detection	VMS + 6p	VMS + 6p	VMS + 6p
Scan Method	Measured	Measured	Measured

Measurement Results

	Area Scan	Zoom Scan	Zoom Scan
Date	2023-02-24, 13:53	2023-02-24, 14:05	2023-02-24, 14:16
psSAR1g [W/Kg]	0.426	0.510	0.393
psSAR10g [W/Kg]	0.164	0.172	0.133
Power Drift [dB]	0.10	0.11	0.15
Power Scaling	Disabled	Disabled	Disabled
Scaling Factor [dB]			
TSL Correction	Positive only	Positive only	Positive only
M2/M1 [%]		61.1	61.0
Dist 3dB Peak [mm]		6.4	6.5

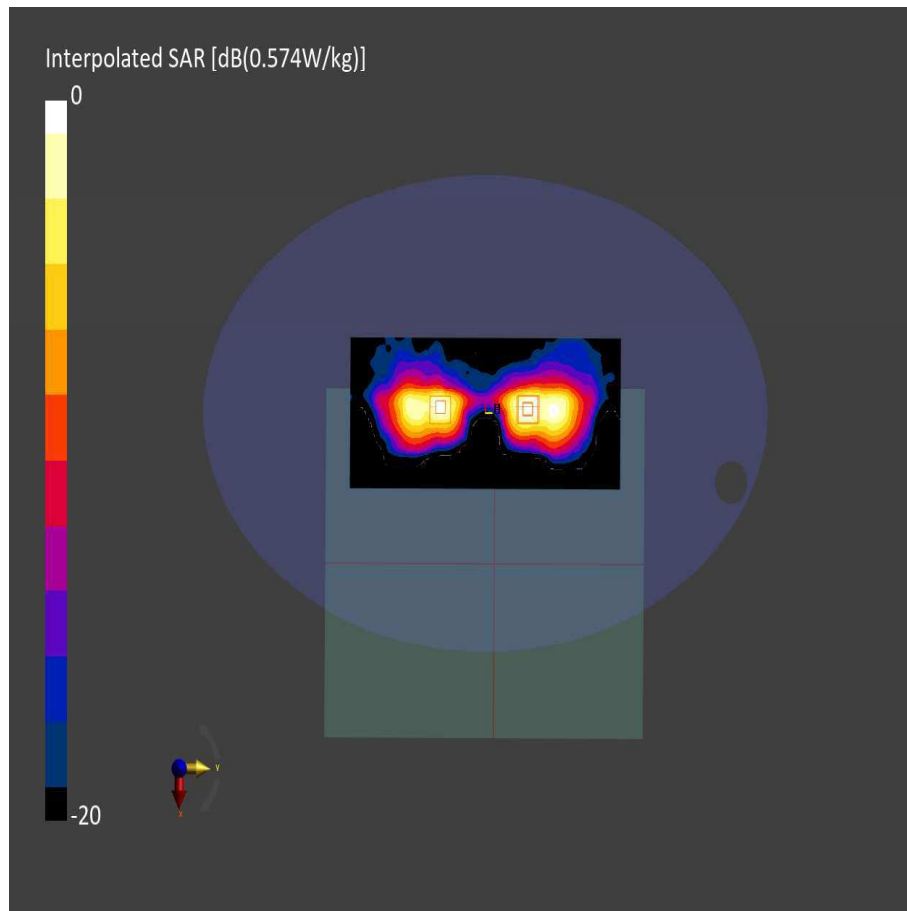


Figure C.14: SAR Body Testing Results for the A2941 at 5310.0 MHz



Measurement Report for , BACK, WLAN 5GHz, IEEE 802.11ac WiFi (80MHz, MCS0, 99pc duty cycle), Channel 138 (5690.0 MHz)

Device Under Test Properties

Model, Manufacturer	Dimensions [mm]	IMEI	DUT Type
	330.0 x 280.0 x 15.0		Laptop

Exposure Conditions

Phantom Section, TSL	Position, Test Distance [mm]	Band	Group, UID	Frequency [MHz], Channel Number	Conversion Factor	TSL Conductivity [S/m]	TSL Permittivity
Flat, HSL	BACK, 0.00	WLAN 5GHz	WLAN, 10544-AAC	5690.0, 138	5.1	5.04	33.6

Hardware Setup

Phantom	TSL, Measured Date	Probe, Calibration Date	DAE, Calibration Date
ELI V8.0 (20deg probe tilt) - SN:2057	HBBL-600-10000 DAK 3.5 Head 21.3 deg.C 2023-Feb-20 - SYS1 B1.prn, 2023-Feb-20	EX3DV4 - SN3759, 2022-12-15	DAE4 Sn475, 2022-12-13

Scans Setup

	Area Scan	Zoom Scan
Grid Extents [mm]	120.0 x 180.0	22.0 x 22.0 x 22.0
Grid Steps [mm]	10.0 x 10.0	4.0 x 4.0 x 1.4
Sensor Surface [mm]	3.0	1.4
Graded Grid	n/a	Yes
Grading Ratio	n/a	1.4
MAIA	Y	N/A
Surface Detection	VMS + 6p	VMS + 6p
Scan Method	Measured	Measured

Measurement Results

	Area Scan	Zoom Scan
Date	2023-02-24, 05:08	2023-02-24, 05:23
psSAR1g [W/Kg]	0.556	0.619
psSAR10g [W/Kg]	0.191	0.199
Power Drift [dB]	-0.03	-0.03
Power Scaling	Disabled	Disabled
Scaling Factor [dB]		
TSL Correction	Positive only	Positive only
M2/M1 [%]		57.9
Dist 3dB Peak [mm]		6.4

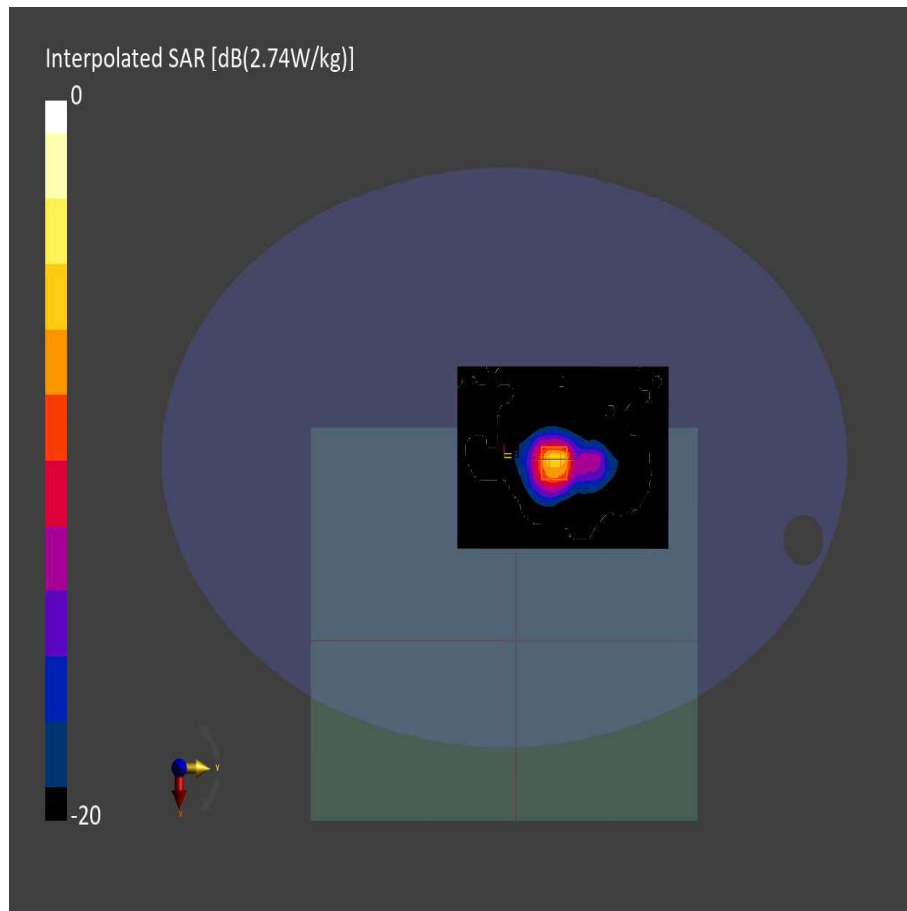


Figure C.15: SAR Body Testing Results for the A2941 at 5690.0 MHz



Measurement Report for , BACK, WLAN 5GHz, IEEE 802.11ac WiFi (80MHz, MCS0, 99pc duty cycle), Channel 138 (5690.0 MHz)

Device Under Test Properties

Model, Manufacturer	Dimensions [mm]	IMEI	DUT Type
	330.0 x 280.0 x 15.0		Laptop

Exposure Conditions

Phantom Section, TSL	Position, Test Distance [mm]	Band	Group, UID	Frequency [MHz], Channel Number	Conversion Factor	TSL Conductivity [S/m]	TSL Permittivity
Flat, HSL	BACK, 0.00	WLAN 5GHz	WLAN, 10544-AAC	5690.0, 138	5.1	5.04	33.6

Hardware Setup

Phantom	TSL, Measured Date	Probe, Calibration Date	DAE, Calibration Date
ELI V8.0 (20deg probe tilt) - SN:2057	HBBL-600-10000 DAK 3.5 Head 21.3 deg.C 2023-Feb-20 - SYS1 B1.prn, 2023-Feb-20	EX3DV4 - SN3759, 2022-12-15	DAE4 Sn475, 2022-12-13

Scans Setup

	Area Scan	Zoom Scan
Grid Extents [mm]	120.0 x 180.0	22.0 x 22.0 x 22.0
Grid Steps [mm]	10.0 x 10.0	4.0 x 4.0 x 1.4
Sensor Surface [mm]	3.0	1.4
Graded Grid	n/a	Yes
Grading Ratio	n/a	1.4
MAIA	Y	Y
Surface Detection	VMS + 6p	VMS + 6p
Scan Method	Measured	Measured

Measurement Results

	Area Scan	Zoom Scan
Date	2023-02-24, 07:34	2023-02-24, 07:43
psSAR1g [W/Kg]	0.339	0.375
psSAR10g [W/Kg]	0.116	0.120
Power Drift [dB]	0.02	0.00
Power Scaling	Disabled	Disabled
Scaling Factor [dB]		
TSL Correction	Positive only	Positive only
M2/M1 [%]		57.8
Dist 3dB Peak [mm]		7.2

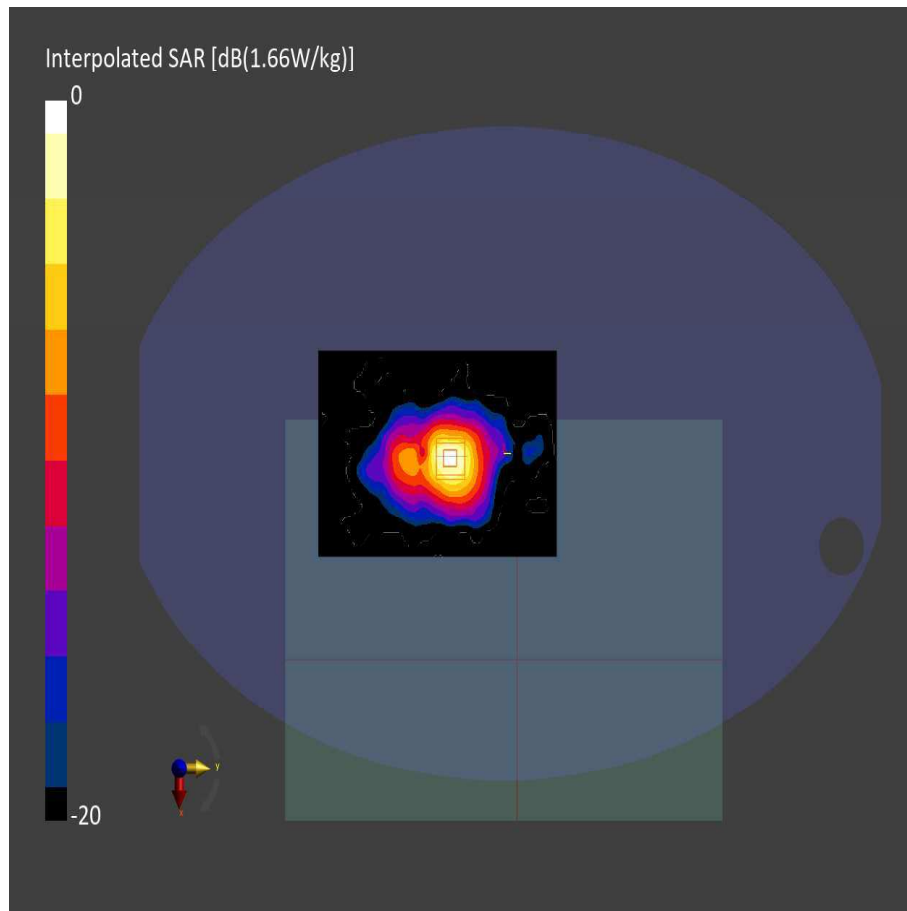


Figure C.16: SAR Body Testing Results for the A2941 at 5690.0 MHz



Measurement Report for , BACK, WLAN 5GHz, IEEE 802.11ac WiFi (80MHz, MCS0, 99pc duty cycle), Channel 138 (5690.0 MHz)

Device Under Test Properties

Model, Manufacturer	Dimensions [mm]	IMEI	DUT Type
	330.0 x 280.0 x 15.0		Laptop

Exposure Conditions

Phantom Section, TSL	Position, Test Distance [mm]	Band	Group, UID	Frequency [MHz], Channel Number	Conversion Factor	TSL Conductivity [S/m]	TSL Permittivity
Flat, HSL	BACK, 0.00	WLAN 5GHz	WLAN, 10544-AAC	, 138	5.1	5.04	33.6

Hardware Setup

Phantom	TSL, Measured Date	Probe, Calibration Date	DAE, Calibration Date
ELI V8.0 (20deg probe tilt) - SN:2057	HBBL-600-10000 DAK 3.5 Head 21.3 deg.C 2023-Feb-20 - SYS1 B1.prn, 2023-Feb-20	EX3DV4 - SN3759, 2022-12-15	DAE4 Sn475, 2022-12-13

Scans Setup

	Area Scan	Zoom Scan	Zoom Scan
Grid Extents [mm]	x 280.0	22.0 x 22.0 x 22.0	22.0 x 22.0 x 22.0
Grid Steps [mm]	10.0 x 10.0	4.0 x 4.0 x 1.4	4.0 x 4.0 x 1.4
Sensor Surface [mm]	3.0	1.4	1.4
Graded Grid	n/a	Yes	Yes
Grading Ratio	n/a	1.4	1.4
MAIA	Y	N/A	Y
Surface Detection	VMS + 6p	VMS + 6p	VMS + 6p
Scan Method	Measured	Measured	Measured

Measurement Results

	Area Scan	Zoom Scan	Zoom Scan
Date	2023-02-24, 10:53	2023-02-24, 11:03	2023-02-24, 11:12
psSAR1g [W/Kg]	0.590	0.641	0.468
psSAR10g [W/Kg]	0.202	0.210	0.153
Power Drift [dB]	0.00	0.01	-0.01
Power Scaling	Disabled	Disabled	Disabled
Scaling Factor [dB]			
TSL Correction	Positive only	Positive only	Positive only
M2/M1 [%]		58.0	57.8
Dist 3dB Peak [mm]		6.4	7.2

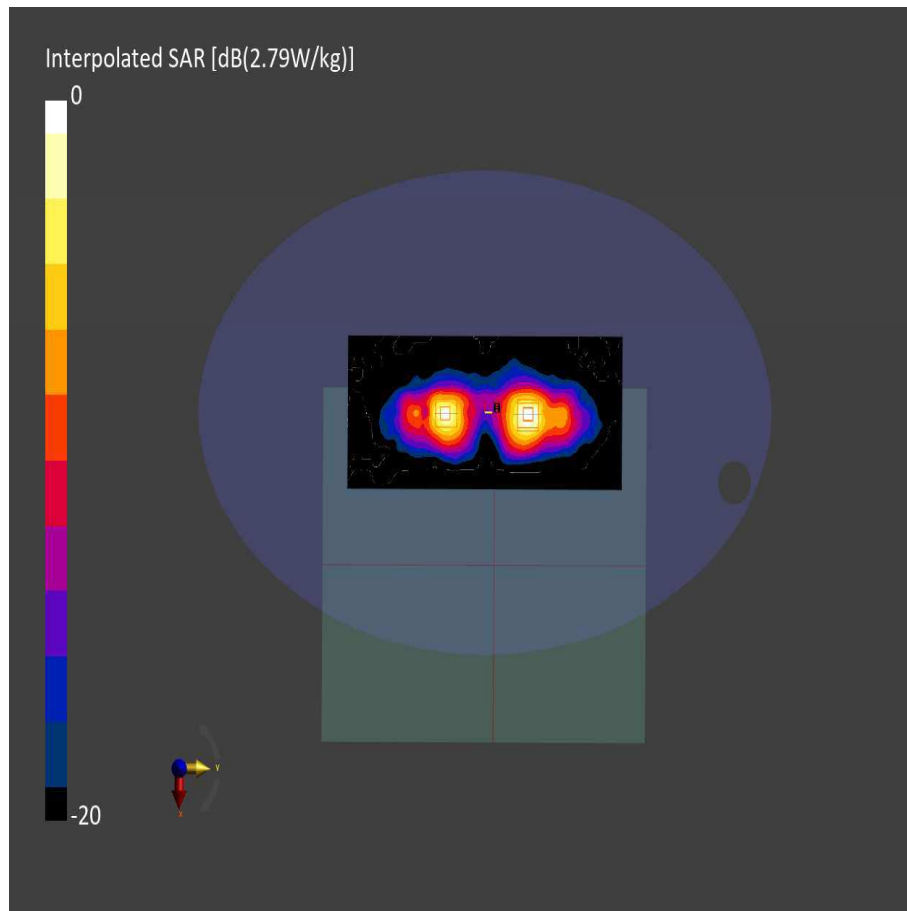


Figure C.17: SAR Body Testing Results for the A2941 at 5690.0 MHz



WLAN 5800 MHz

Measurement Report for , BACK, WLAN 5GHz, IEEE 802.11ac WiFi (80MHz, MCS0, 99pc duty cycle), Channel 155 (5775.0 MHz)

Device Under Test Properties

Model, Manufacturer	Dimensions [mm]	IMEI	DUT Type
	330.0 x 280.0 x 15.0		Laptop

Exposure Conditions

Phantom Section, TSL	Position, Test Distance [mm]	Band	Group, UID	Frequency [MHz], Channel Number	Conversion Factor	TSL Conductivity [S/m]	TSL Permittivity
Flat, HSL	BACK, 0.00	WLAN 5GHz	WLAN, 10544-AAC	5775.0, 155	5.12	5.13	33.4

Hardware Setup

Phantom	TSL, Measured Date	Probe, Calibration Date	DAE, Calibration Date
ELI V8.0 (20deg probe tilt) - SN:2057	HBBL-600-10000 DAK 3.5 Head 21.3 deg.C 2023-Feb-20 - SYS1 B1.p.m, 2023-Feb-20	EX3DV4 - SN3759, 2022-12-15	DAE4 Sn475, 2022-12-13

Scans Setup

	Area Scan	Zoom Scan
Grid Extents [mm]	120.0 x 180.0	22.0 x 22.0 x 22.0
Grid Steps [mm]	10.0 x 10.0	4.0 x 4.0 x 1.4
Sensor Surface [mm]	3.0	1.4
Graded Grid	n/a	Yes
Grading Ratio	n/a	1.4
MAIA	Y	N/A
Surface Detection	VMS + 6p	VMS + 6p
Scan Method	Measured	Measured

Measurement Results

	Area Scan	Zoom Scan
Date	2023-02-24, 15:23	2023-02-24, 15:34
psSAR1g [W/Kg]	0.640	0.763
psSAR10g [W/Kg]	0.225	0.248
Power Drift [dB]	0.09	0.05
Power Scaling	Disabled	Disabled
Scaling Factor [dB]		
TSL Correction	Positive only	Positive only
M2/M1 [%]		57.5
Dist 3dB Peak [mm]		6.4

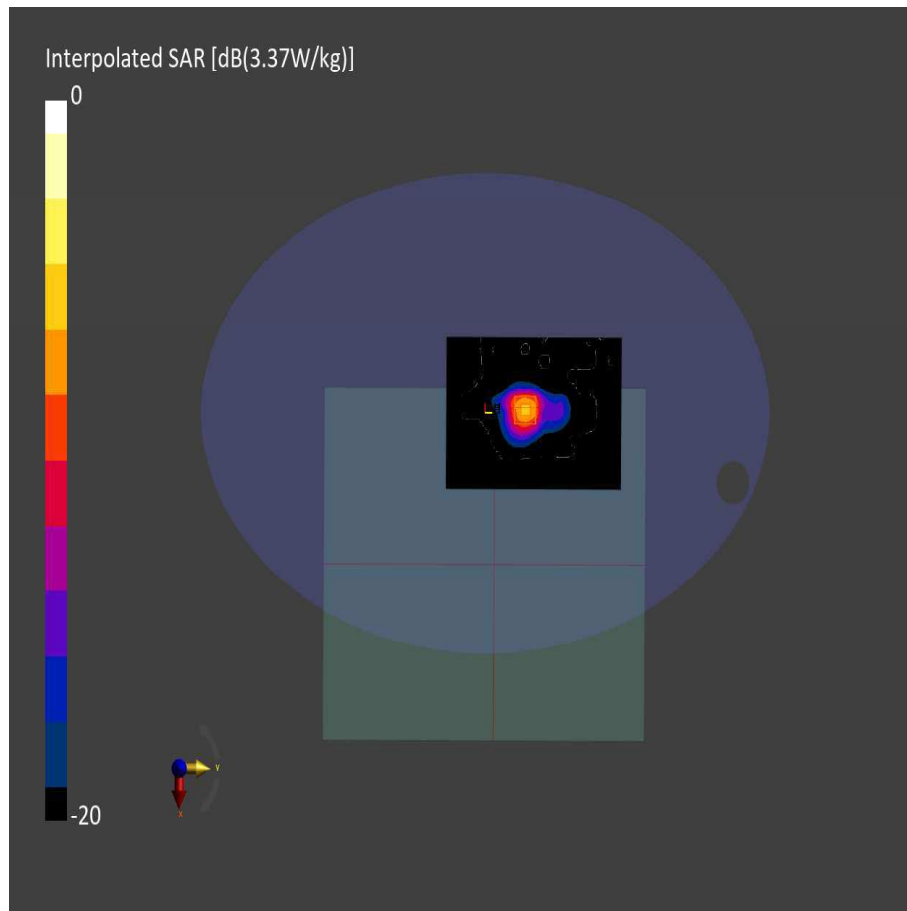


Figure C.18: SAR Body Testing Results for the A2941 at 5775.0 MHz



Measurement Report for , BACK, WLAN 5GHz, IEEE 802.11ac WiFi (80MHz, MCS0, 99pc duty cycle), Channel 155 (5775.0 MHz)

Device Under Test Properties

Model, Manufacturer	Dimensions [mm]	IMEI	DUT Type
	330.0 x 280.0 x 15.0		Laptop

Exposure Conditions

Phantom Section, TSL	Position, Test Distance [mm]	Band	Group, UID	Frequency [MHz], Channel Number	Conversion Factor	TSL Conductivity [S/m]	TSL Permittivity
Flat, HSL	BACK, 0.00	WLAN 5GHz	WLAN, 10544-AAC	5775.0, 155	5.12	5.13	33.4

Hardware Setup

Phantom	TSL, Measured Date	Probe, Calibration Date	DAE, Calibration Date
ELI V8.0 (20deg probe tilt) - SN:2057	HBBL-600-10000 DAK 3.5 Head 21.3 deg.C 2023-Feb-20 - SYS1 B1.prn, 2023-Feb-20	EX3DV4 - SN3759, 2022-12-15	DAE4 Sn475, 2022-12-13

Scans Setup

	Area Scan	Zoom Scan
Grid Extents [mm]	120.0 x 180.0	22.0 x 22.0 x 22.0
Grid Steps [mm]	10.0 x 10.0	4.0 x 4.0 x 1.4
Sensor Surface [mm]	3.0	1.4
Graded Grid	n/a	Yes
Grading Ratio	n/a	1.4
MAIA	Y	N/A
Surface Detection	VMS + 6p	VMS + 6p
Scan Method	Measured	Measured

Measurement Results

	Area Scan	Zoom Scan
Date	2023-02-24, 15:52	2023-02-24, 16:05
psSAR1g [W/Kg]	0.514	0.591
psSAR10g [W/Kg]	0.166	0.188
Power Drift [dB]	-0.11	-0.16
Power Scaling	Disabled	Disabled
Scaling Factor [dB]		
TSL Correction	Positive only	Positive only
M2/M1 [%]		56.8
Dist 3dB Peak [mm]		6.9

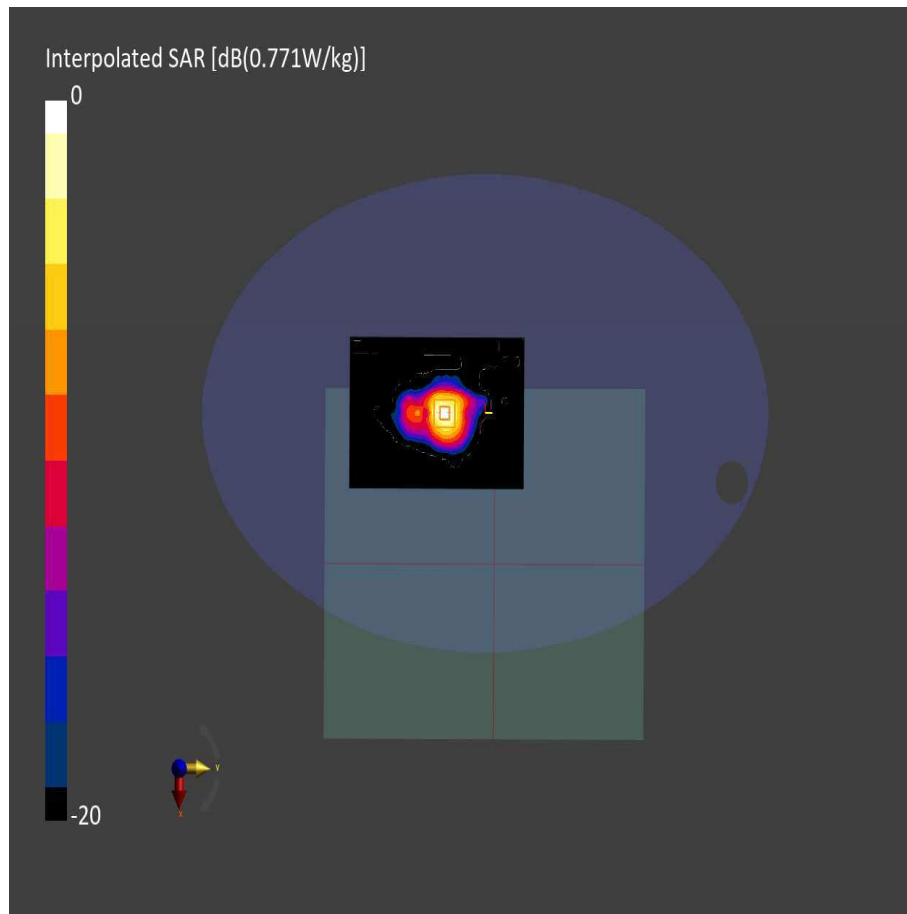


Figure C.19: SAR Body Testing Results for the A2941 at 5775.0 MHz



Measurement Report for , BACK, WLAN 5GHz, IEEE 802.11ac WiFi (80MHz, MCS0, 99pc duty cycle), Channel 155 (5775.0 MHz)

Device Under Test Properties

Model, Manufacturer	Dimensions [mm]	IMEI	DUT Type
	330.0 x 280.0 x 15.0		Laptop

Exposure Conditions

Phantom Section, TSL	Position, Test Distance [mm]	Band	Group, UID	Frequency [MHz], Channel Number	Conversion Factor	TSL Conductivity [S/m]	TSL Permittivity
Flat, HSL	BACK, 0.00	WLAN 5GHz	WLAN, 10544-AAC	, 155	5.12	5.13	33.4

Hardware Setup

Phantom	TSL, Measured Date	Probe, Calibration Date	DAE, Calibration Date
ELI V8.0 (20deg probe tilt) - SN:2057	HBBL-600-10000 DAK 3.5 Head 21.3 deg.C 2023-Feb-20 - SYS1 B1.prn, 2023-Feb-20	EX3DV4 - SN3759, 2022-12-15	DAE4 Sn475, 2022-12-13

Scans Setup

	Area Scan	Zoom Scan	Zoom Scan
Grid Extents [mm]	x 300.0	22.0 x 22.0 x 22.0	22.0 x 22.0 x 22.0
Grid Steps [mm]	10.0 x 10.0	4.0 x 4.0 x 1.4	4.0 x 4.0 x 1.4
Sensor Surface [mm]	3.0	1.4	1.4
Graded Grid	n/a	Yes	Yes
Grading Ratio	n/a	1.4	1.4
MAIA	Y	N/A	N/A
Surface Detection	VMS + 6p	VMS + 6p	VMS + 6p
Scan Method	Measured	Measured	Measured

Measurement Results

	Area Scan	Zoom Scan	Zoom Scan
Date	2023-02-25, 02:32	2023-02-25, 02:43	2023-02-25, 02:53
psSAR1g [W/Kg]	0.737	0.803	0.718
psSAR10g [W/Kg]	0.248	0.253	0.224
Power Drift [dB]	-0.01	-0.04	-0.05
Power Scaling	Disabled	Disabled	Disabled
Scaling Factor [dB]			
TSL Correction	Positive only	Positive only	Positive only
M2/M1 [%]		57.2	57.4
Dist 3dB Peak [mm]		6.4	5.9

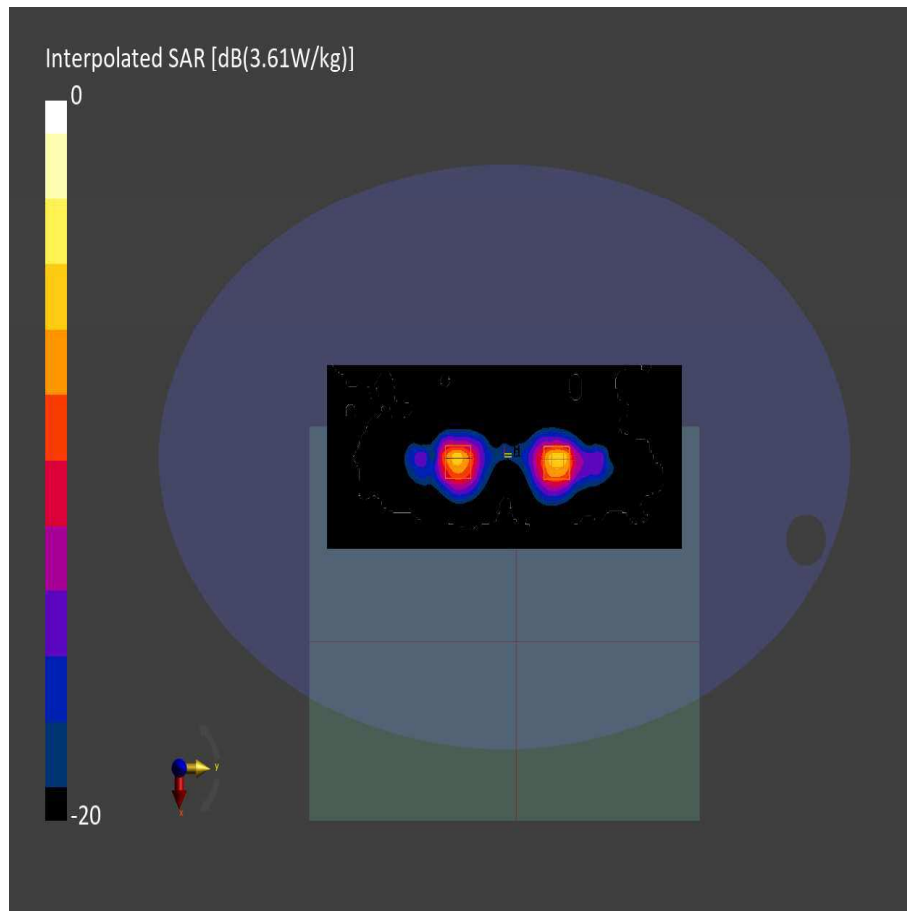


Figure C.20: SAR Body Testing Results for the A2941 at 5775.0 MHz