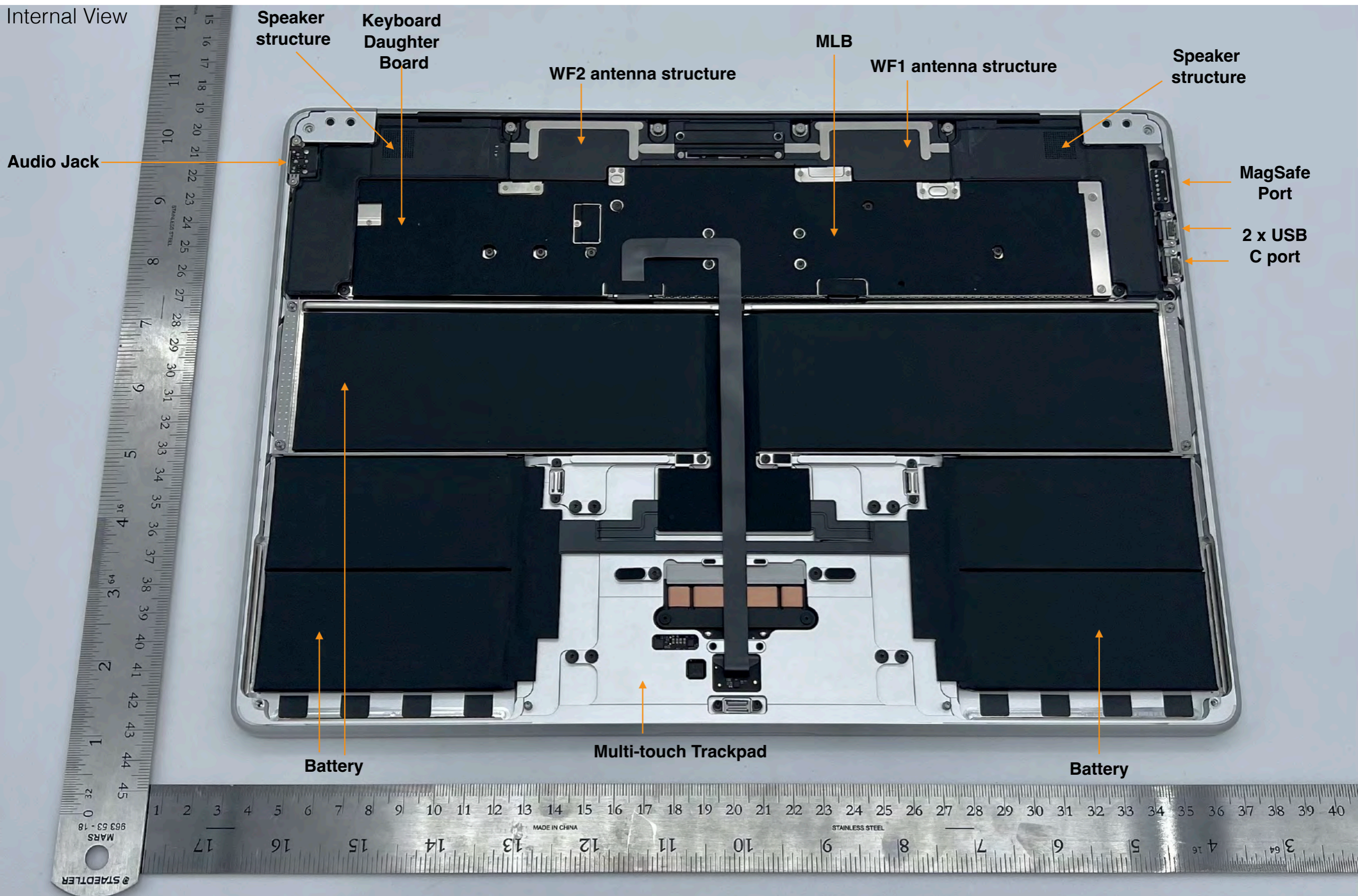


# A2941

Internal View



Speaker structure

Keyboard Daughter Board

WF2 antenna structure

MLB

WF1 antenna structure

Speaker structure

Audio Jack

MagSafe Port

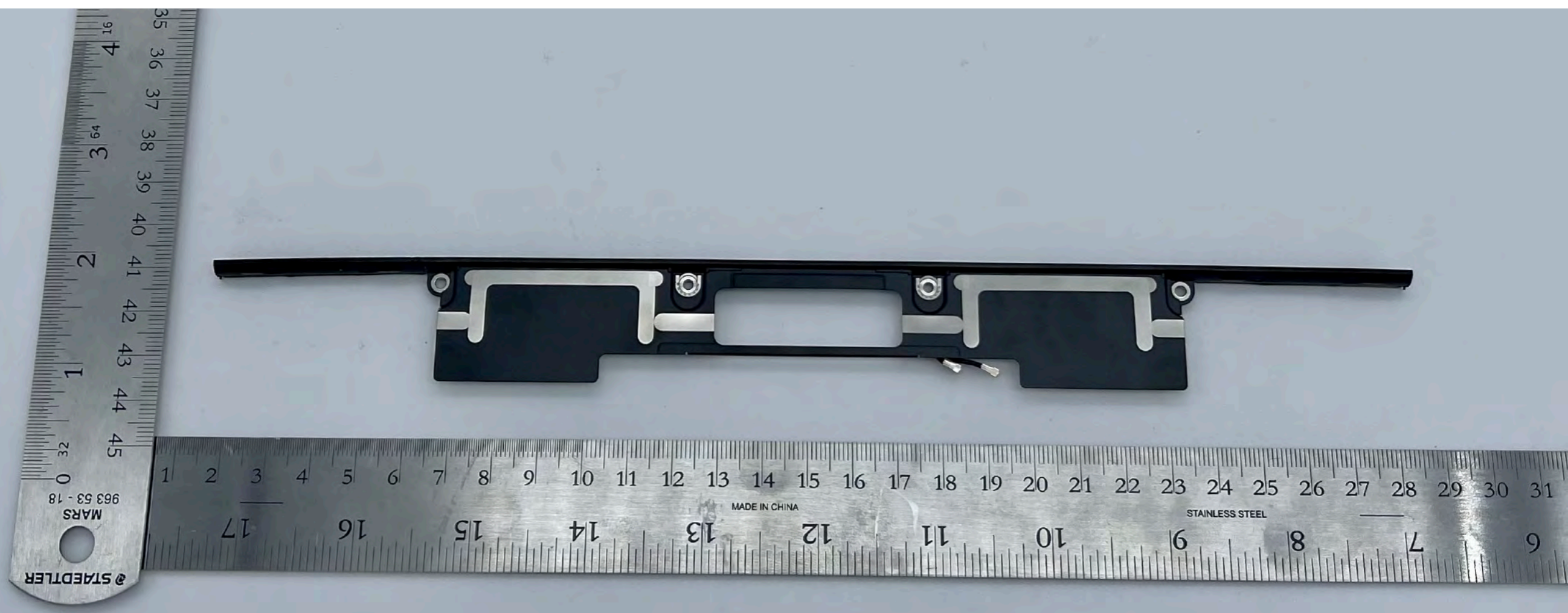
2 x USB C port

Battery

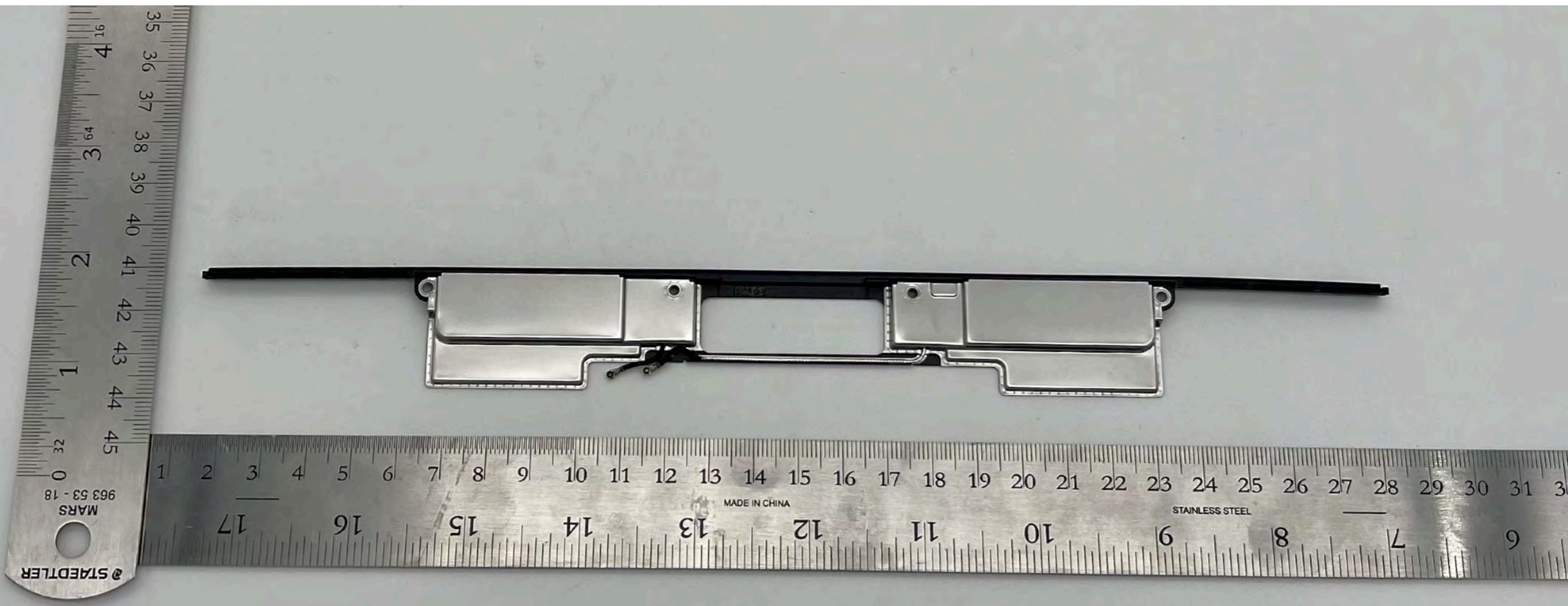
Multi-touch Trackpad

Battery

**A2941**  
WF1 and WF2  
antenna-  
Front

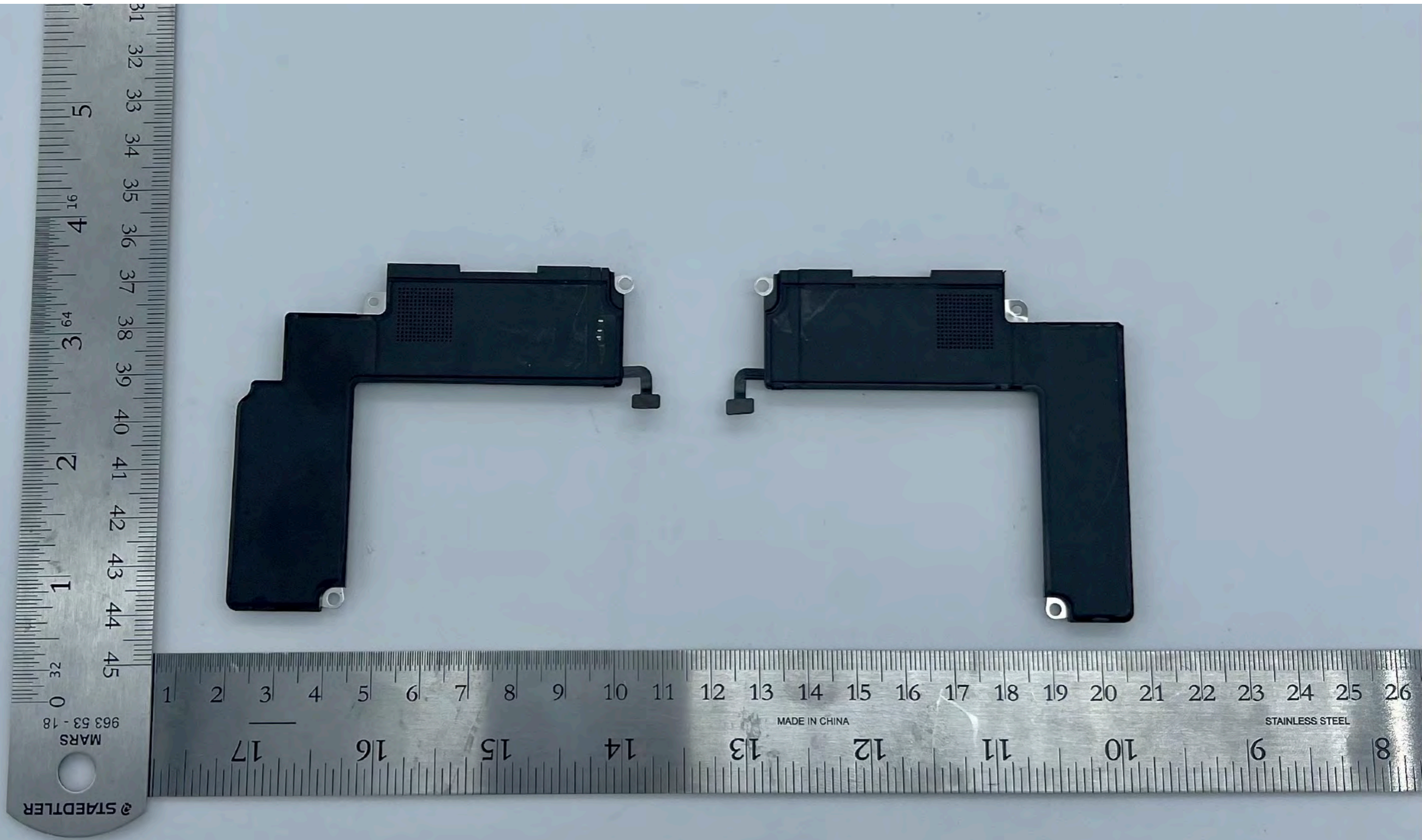


**A2941**  
WF1 and WF2  
antenna-  
Back

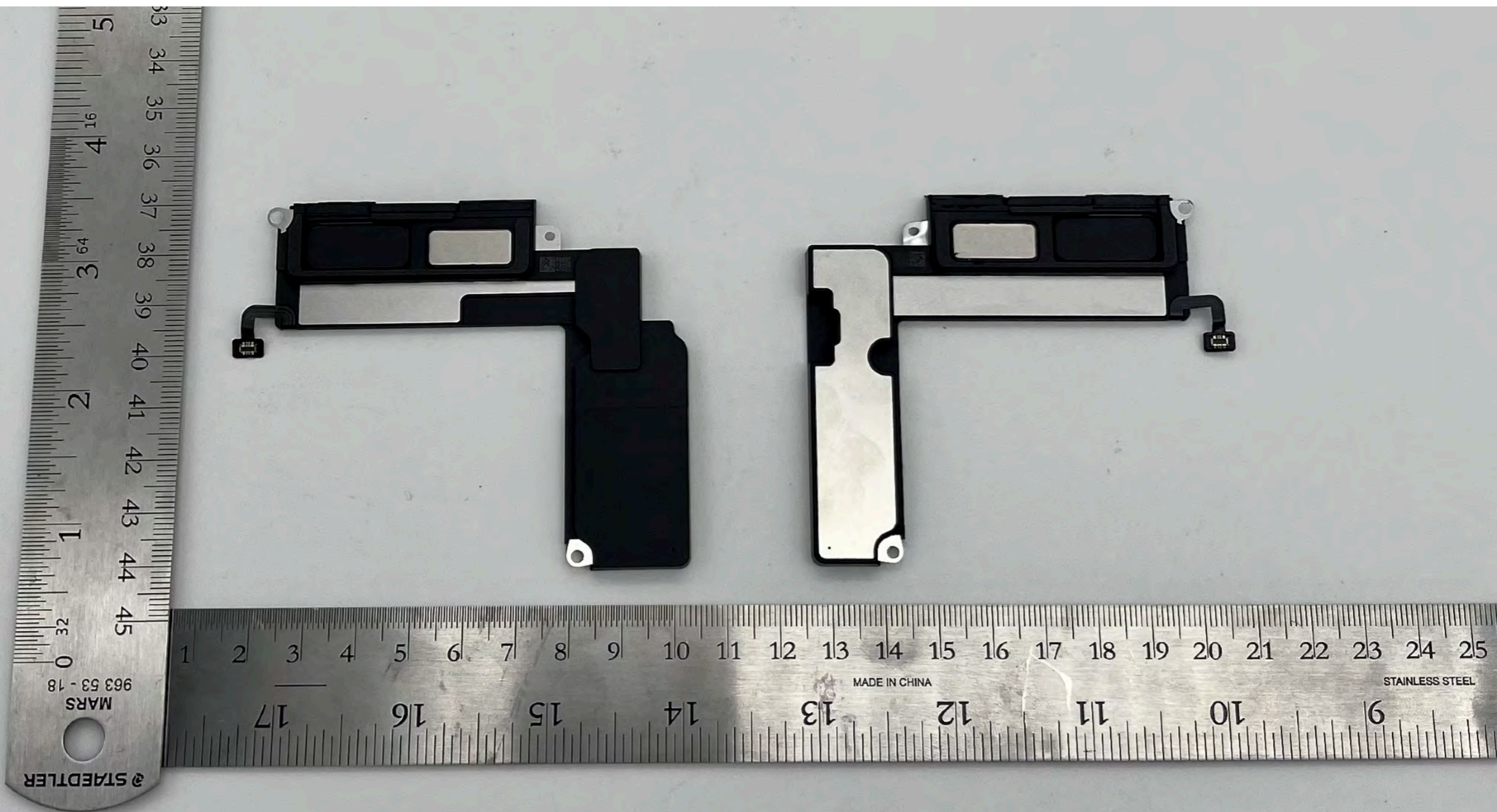


**A2941**

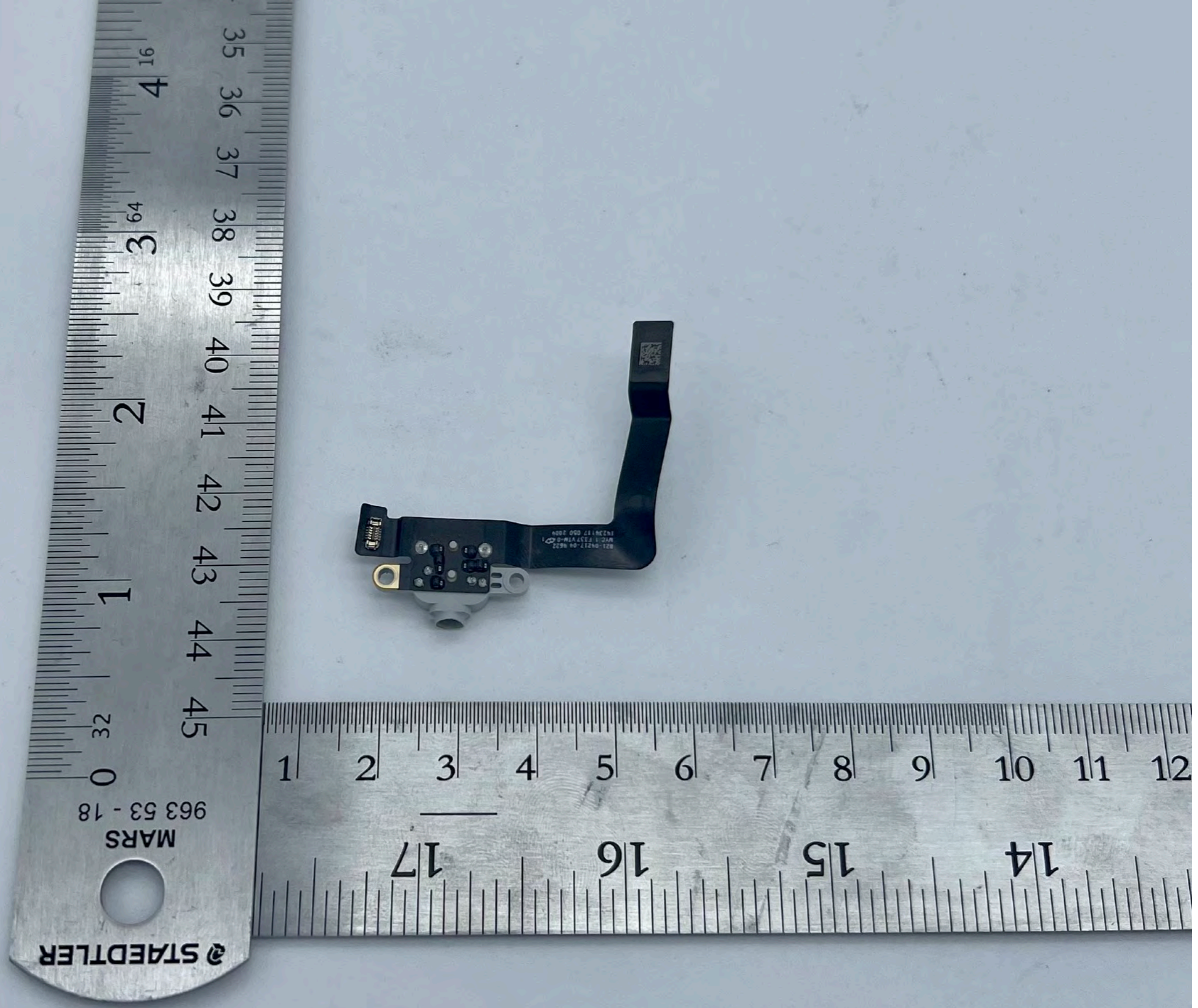
Speaker Structures-  
Front



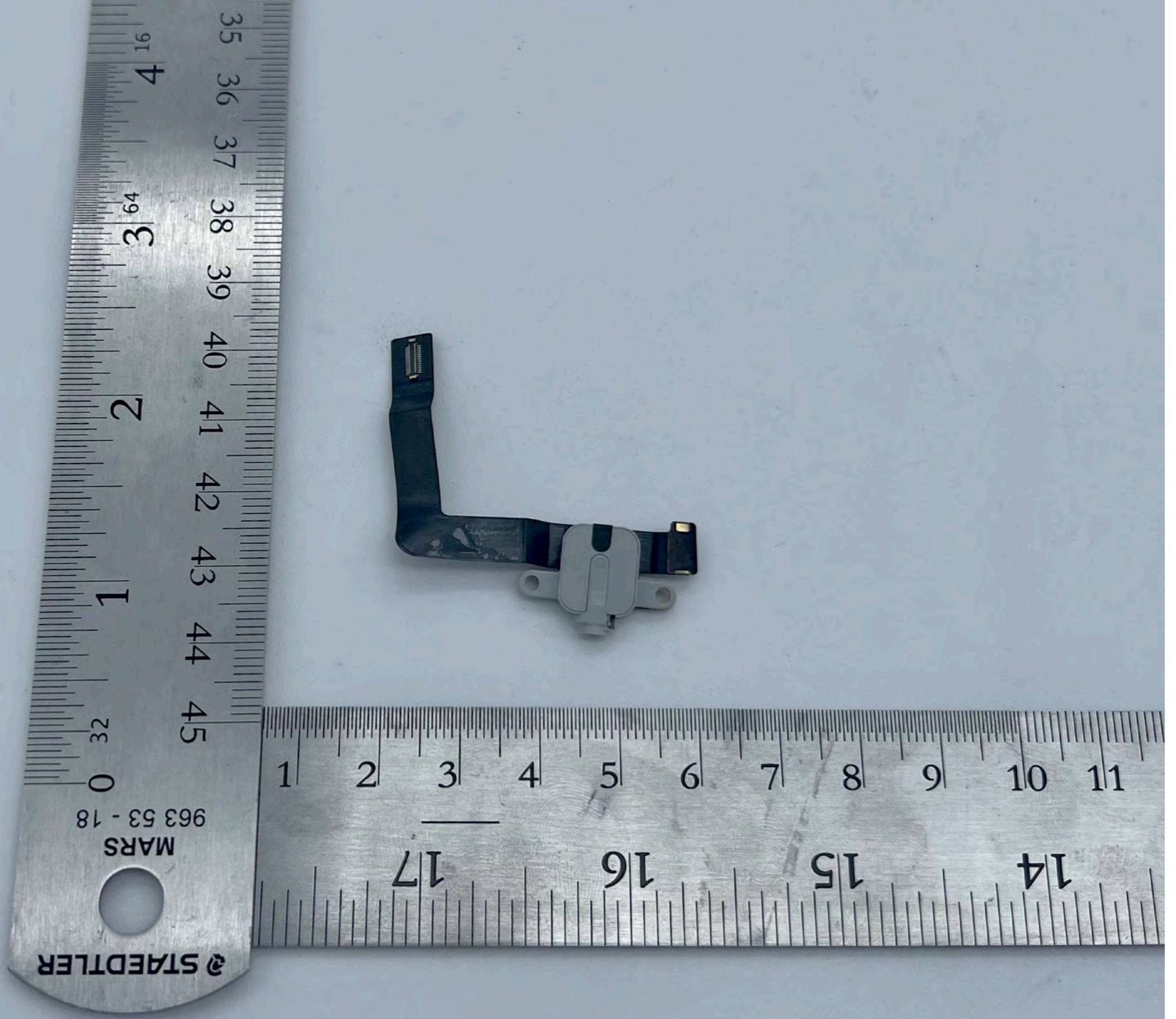
**A2941**  
Speaker  
structures-  
Back



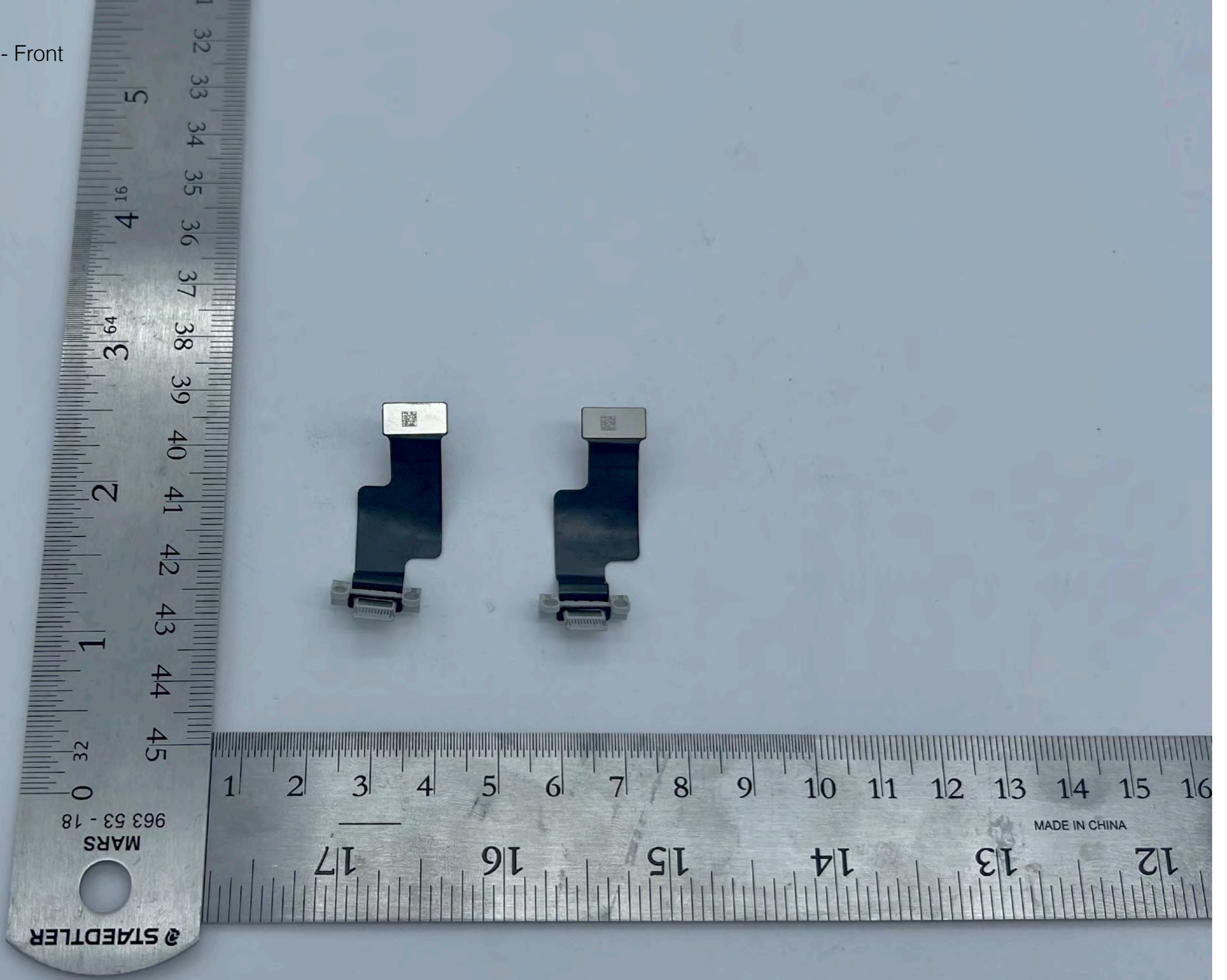
**A2941**  
Audio jack  
assembly- Front



**A2941**  
Audio jack  
assembly- Back



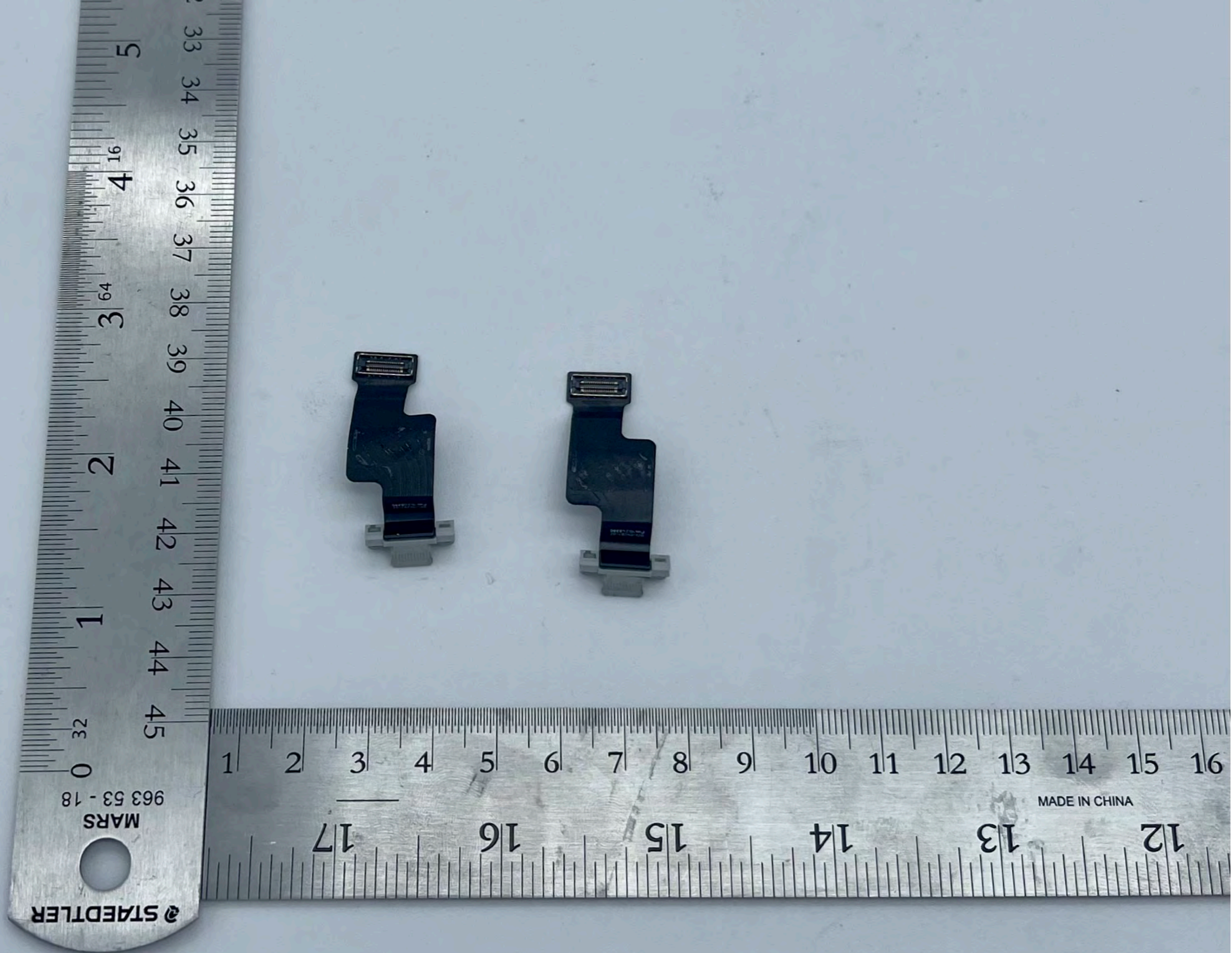
**A2941**  
USB-C Ports - Front



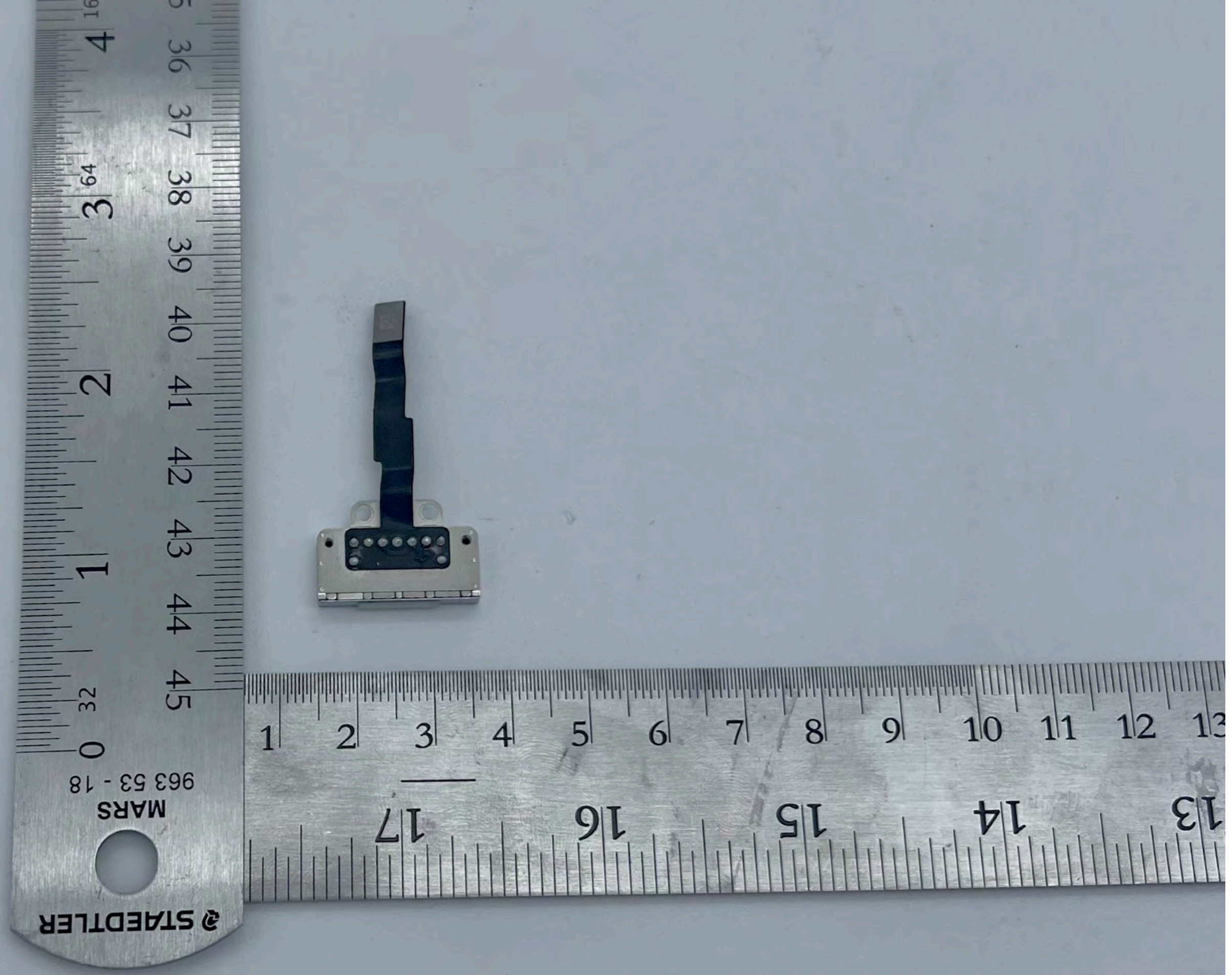


**A2941**

USB-C  
Ports -  
Back

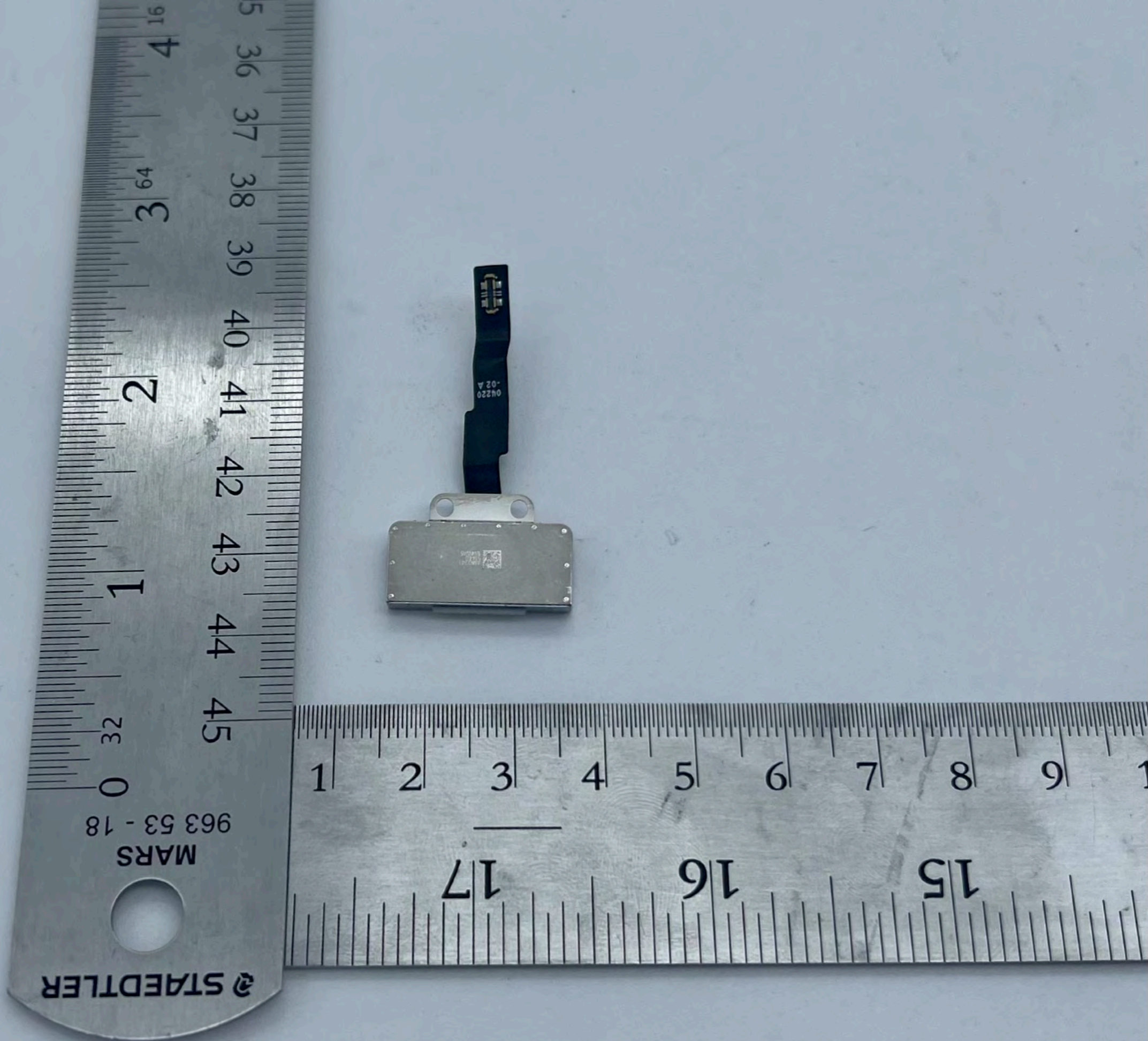


**A2941**  
MagSafe  
Port - Front

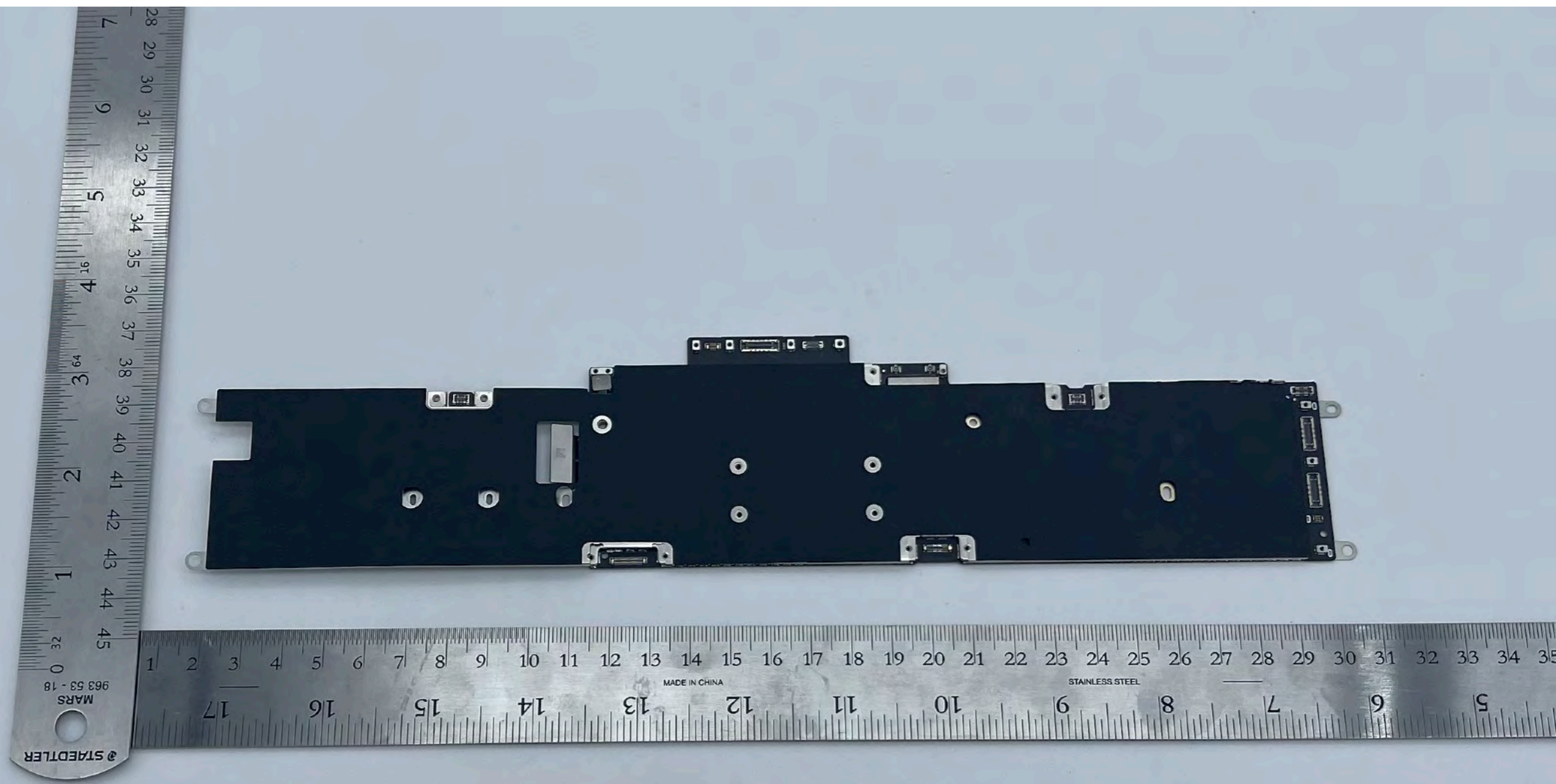


STAEDTLER  
MARS  
963 53 - 18

**A2941**  
MagSafe Port -  
Back

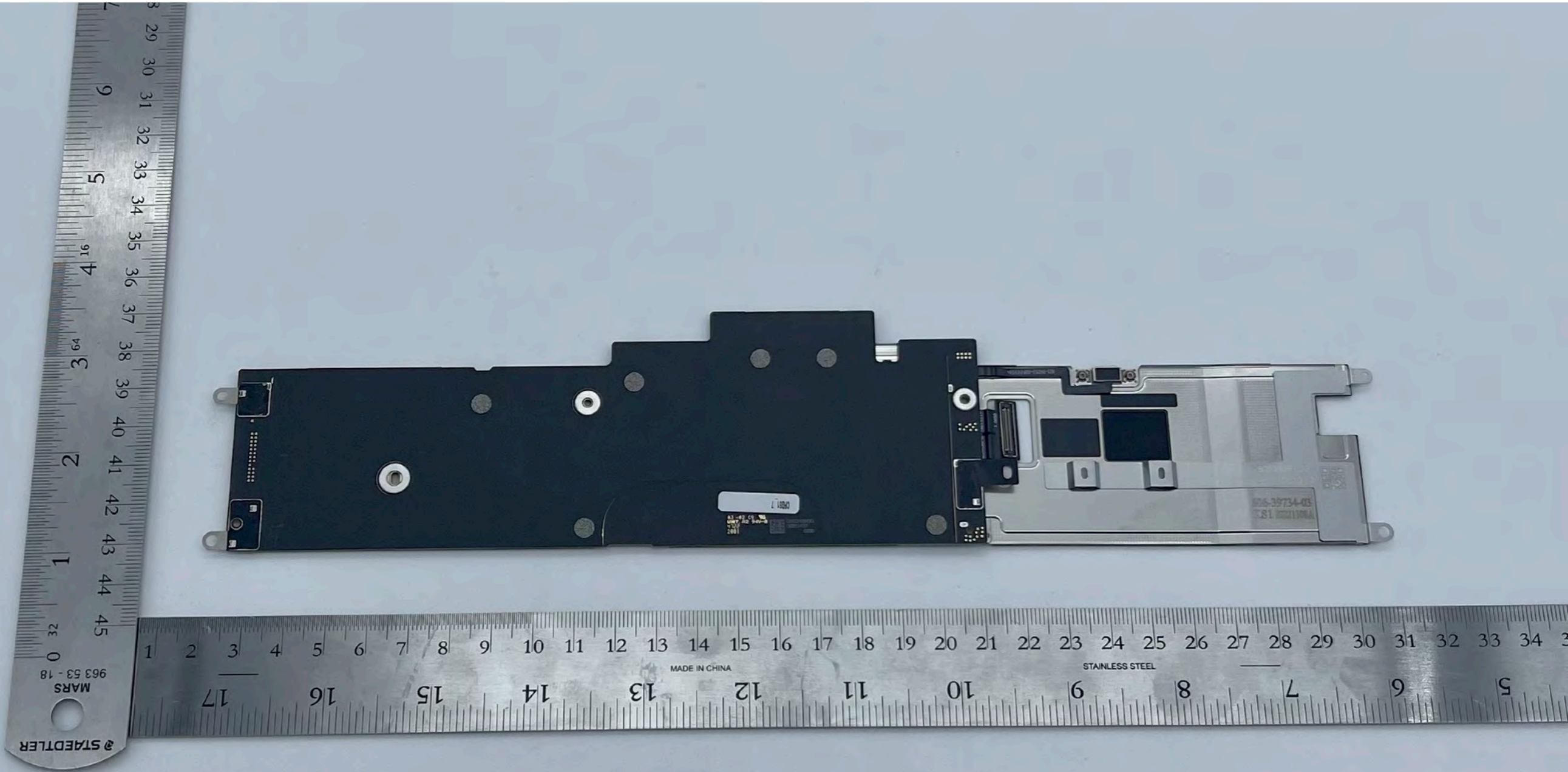


**A2941**  
MLB with shields- Front



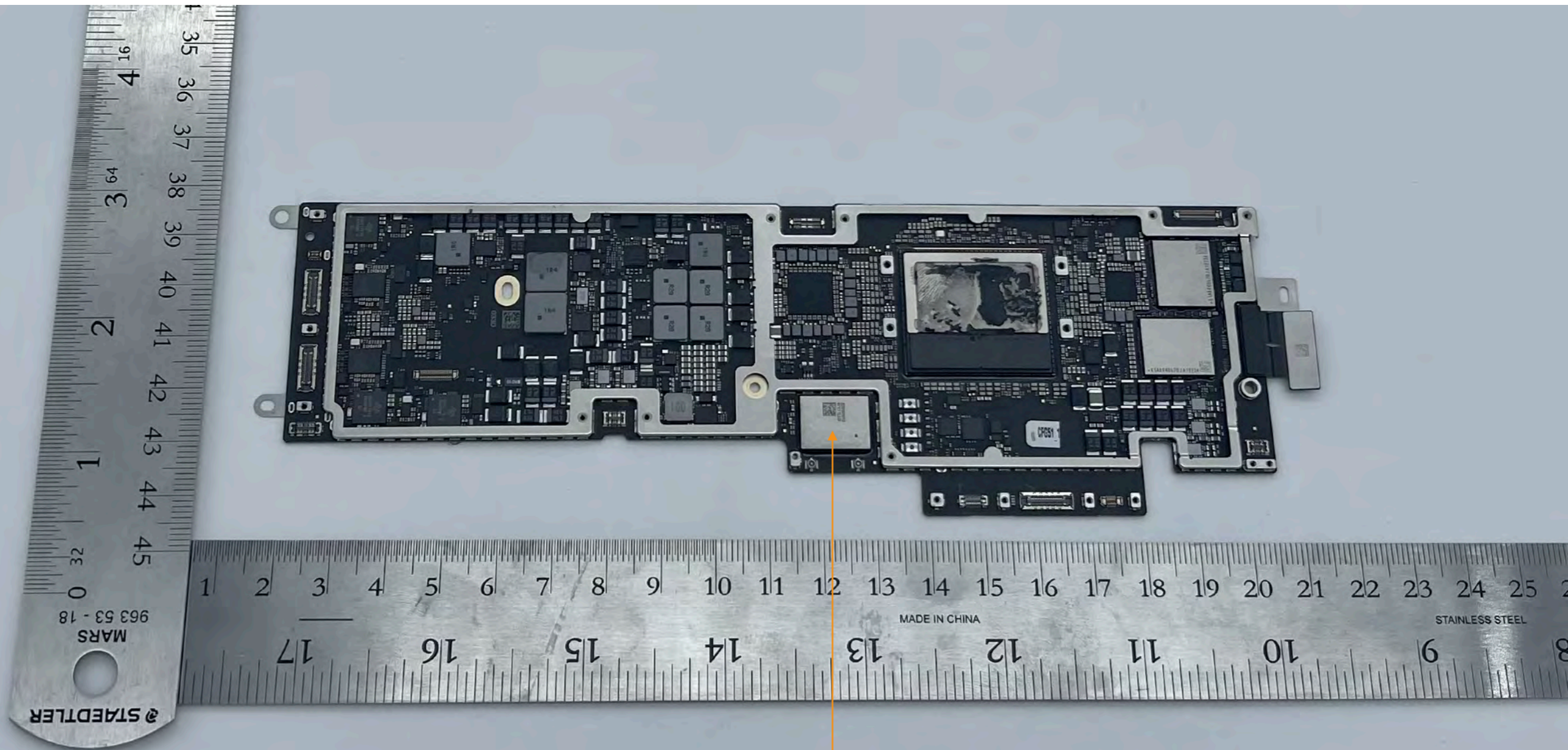
# A2941

MLB with shields- Back



# A2941

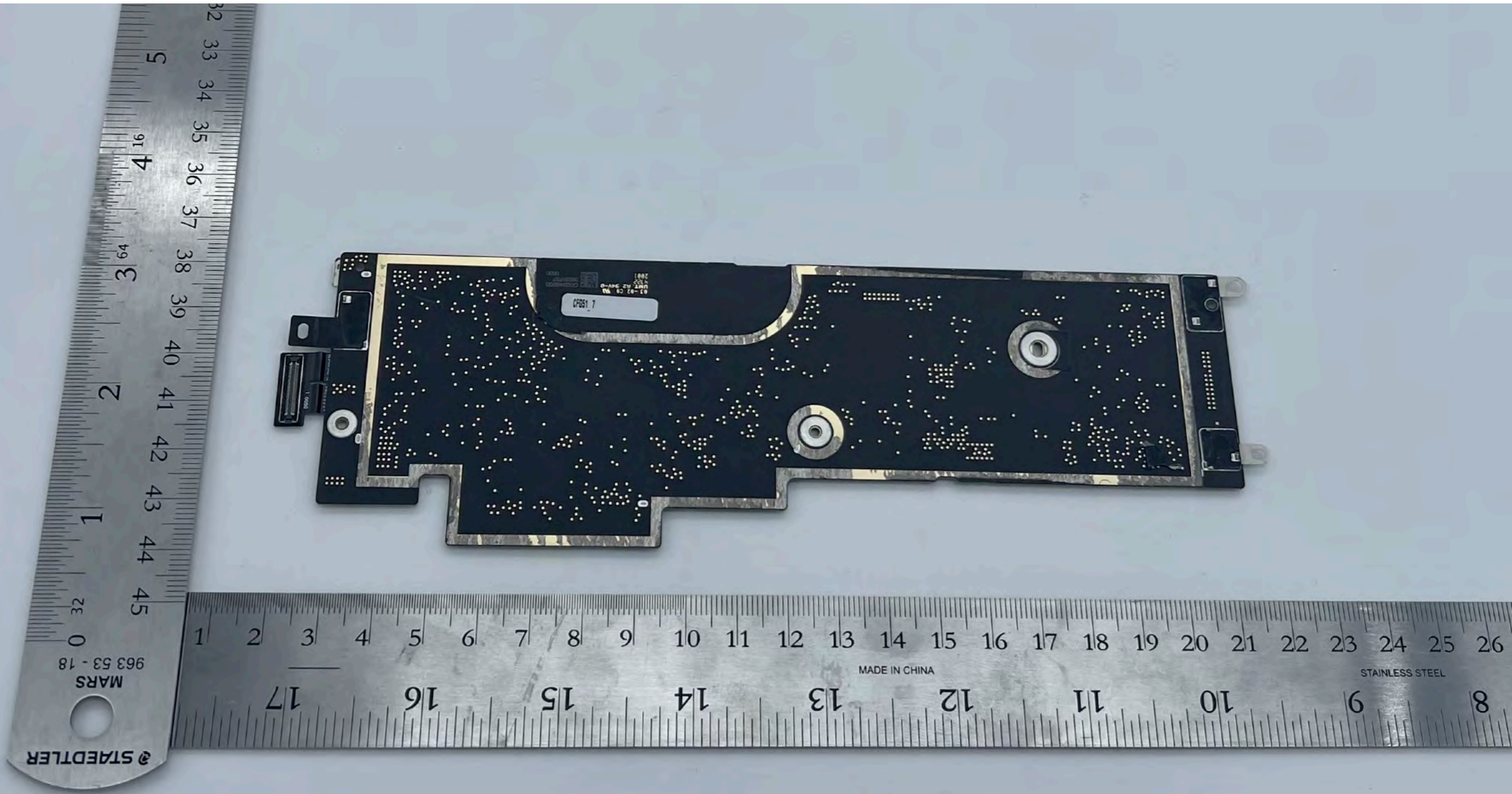
MLB without shields- Front



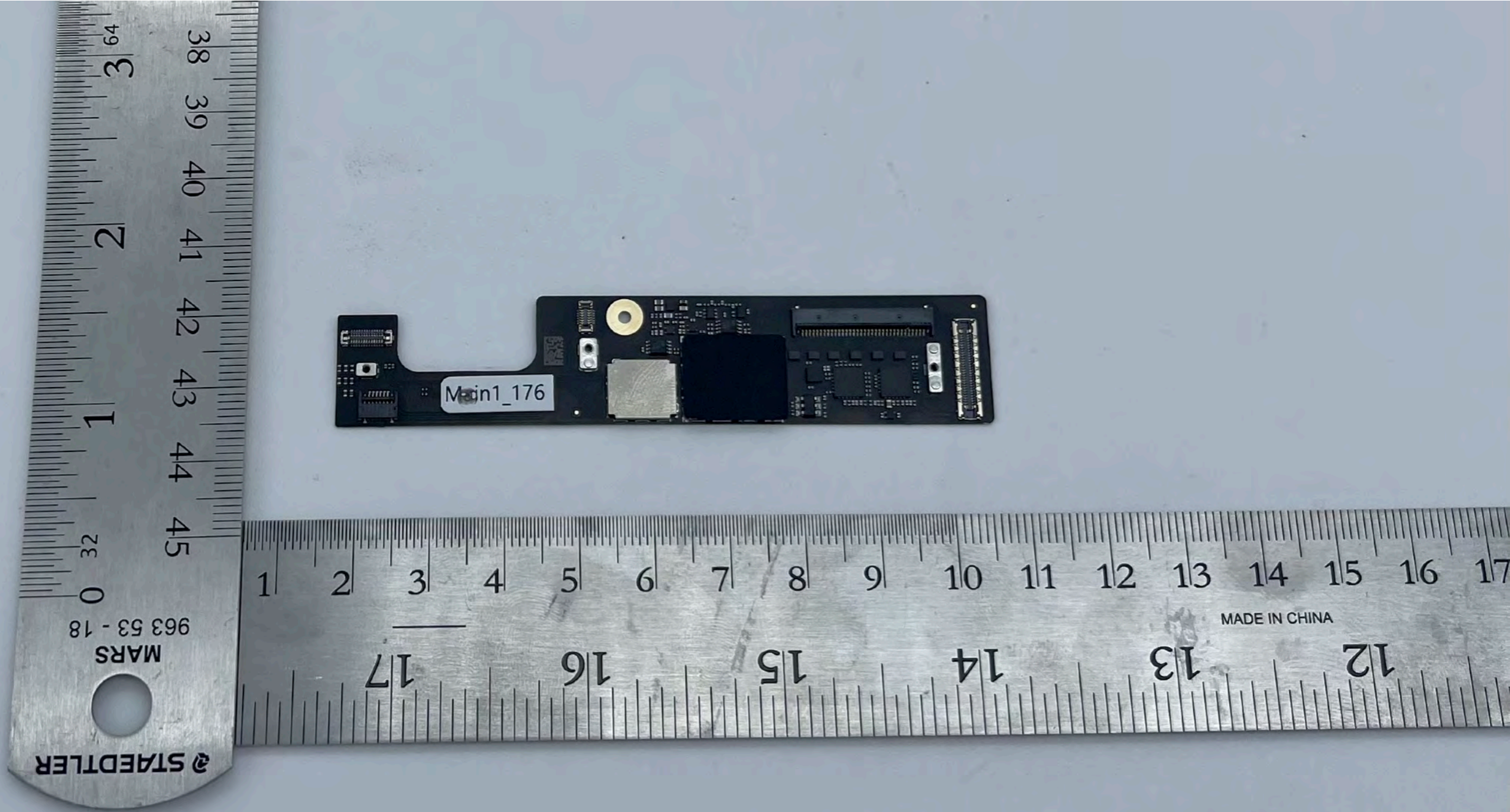
WiFi/BT Module

**A2941**

MLB without shields- Back



**A2941**  
KB Daughter  
Board-  
Front



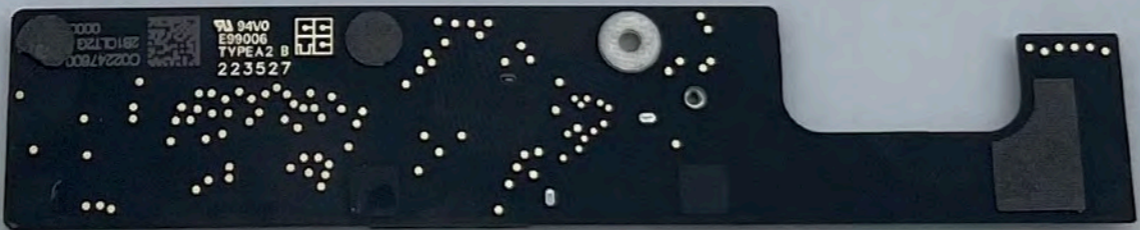
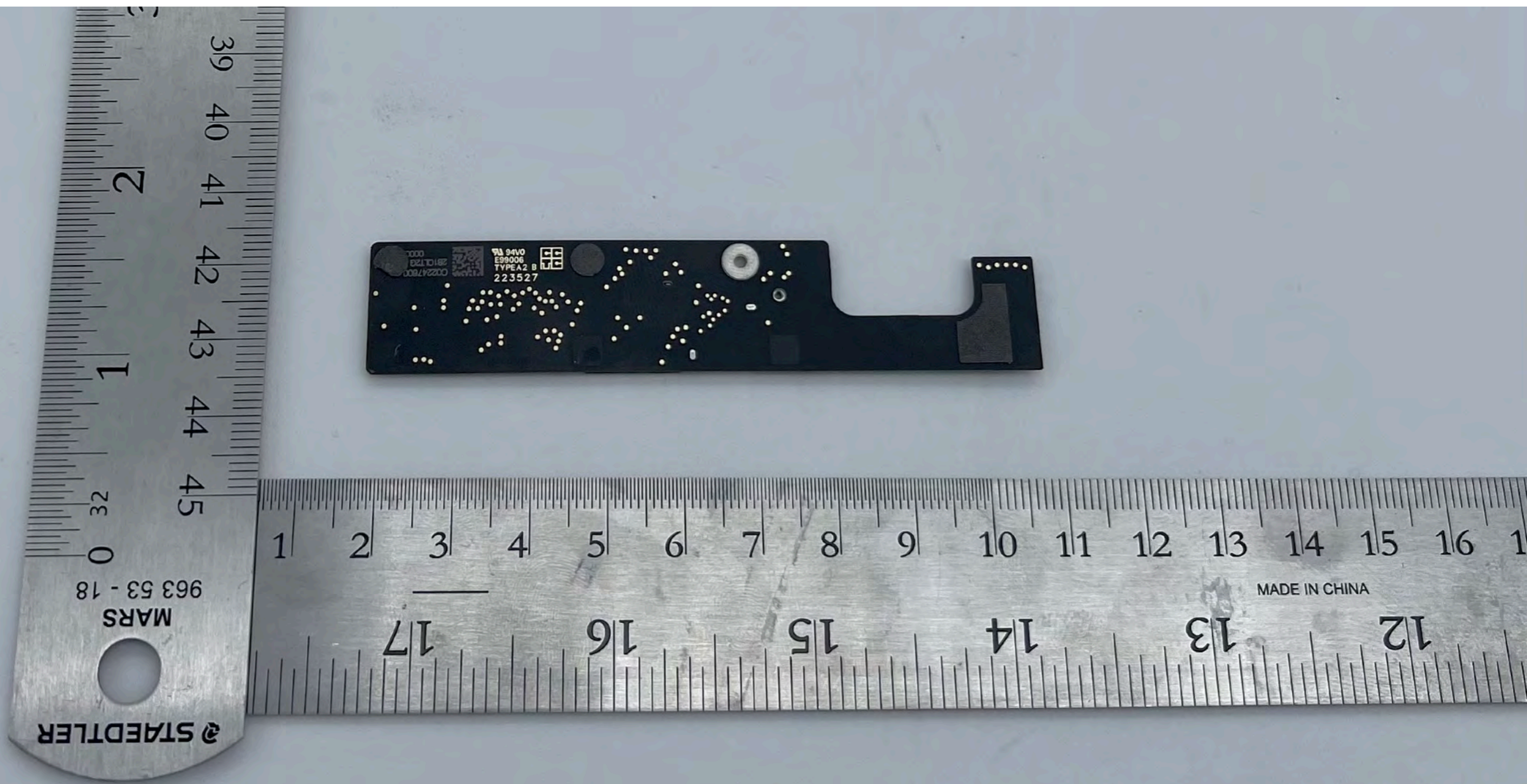
Main1\_176

STAEDTLER  
MARS  
963 53 - 18

MADE IN CHINA



**A2941**  
KB Daughter  
Board-  
Back

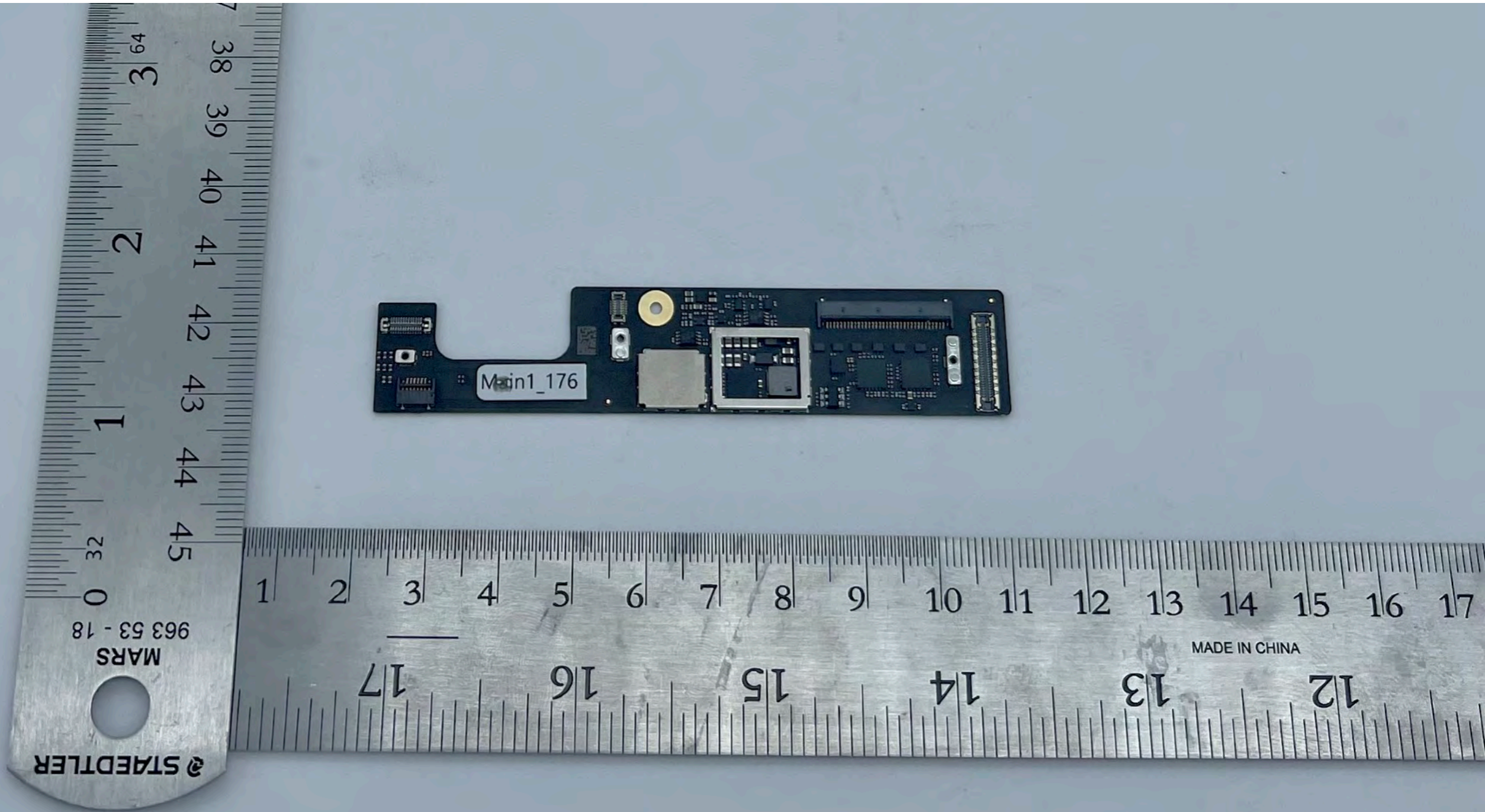


STAEDTLER  
MARS  
963 53 - 18

MADE IN CHINA

# A2941

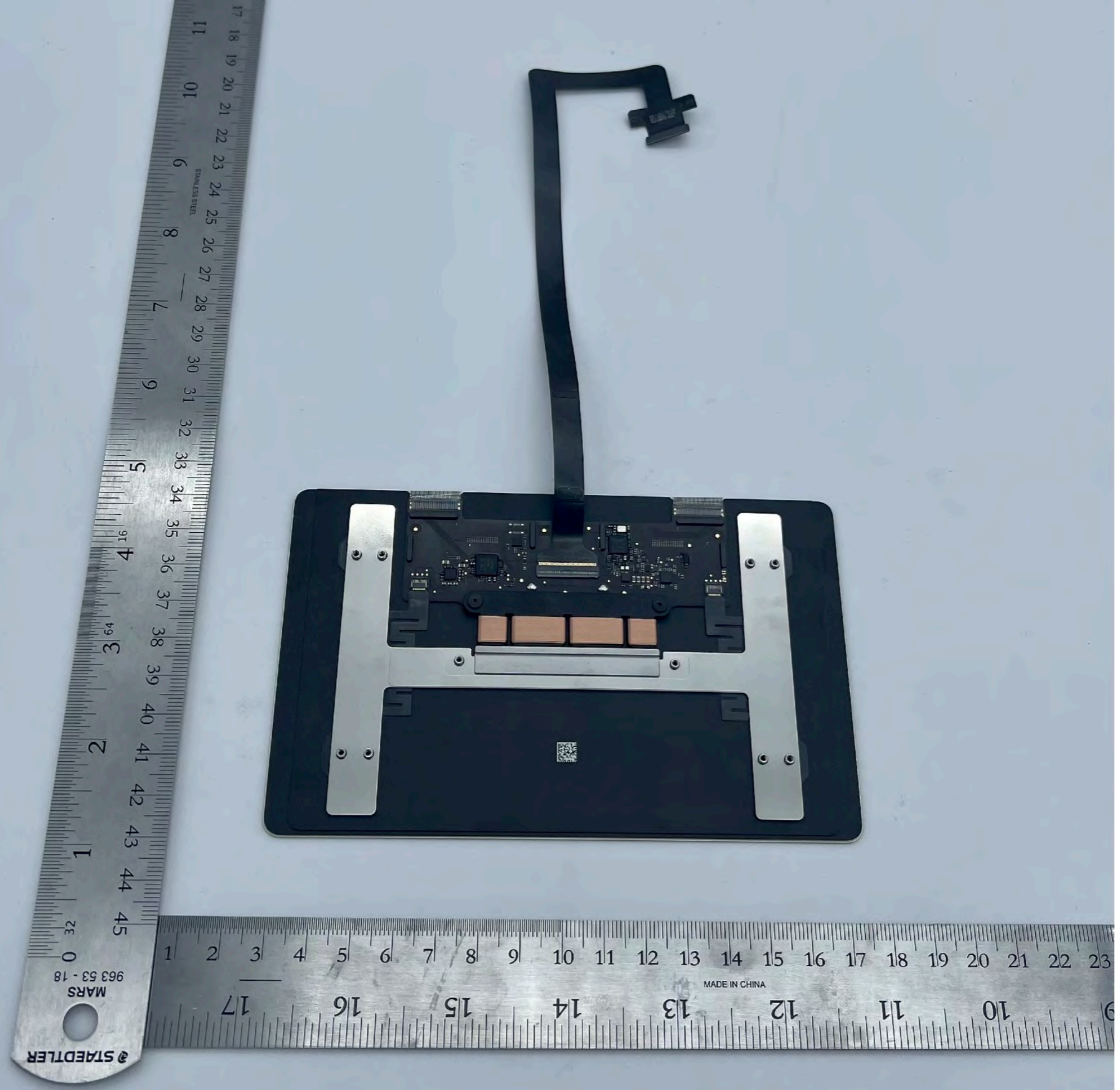
KB Daughter  
Board without  
shields-  
Front



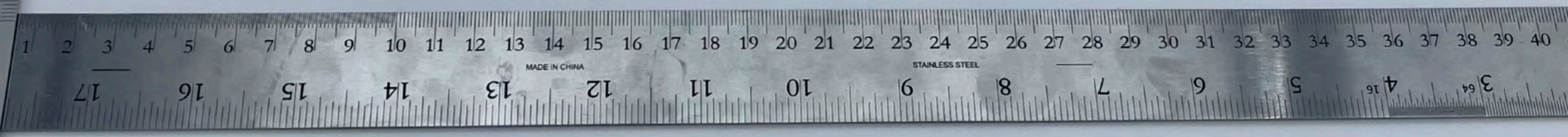
**A2941**  
Multi-touch  
Trackpad- Front



**A2941**  
Multi-touch  
Trackpad- Back

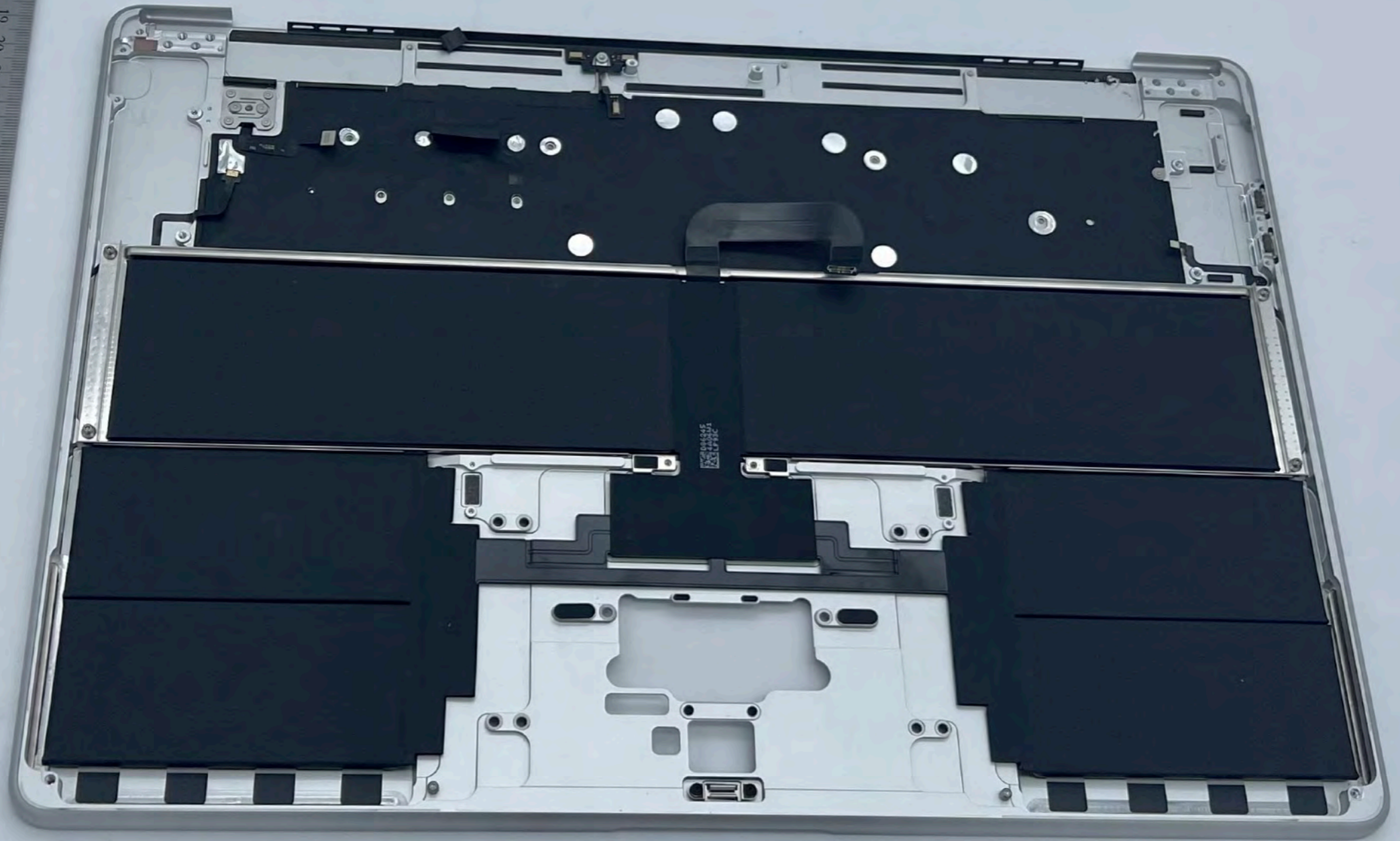


**A2941**  
Keyboard-  
Front



A2941

Keyboard-  
Back



# A2941

Display assembly  
- Front



**A2941**

Display  
assembly  
- Back

