

A2901

Top



A2901

Bottom



A2901

Front Side – Status Light Indicator,
SD Card Slot, Two USB-C Ports



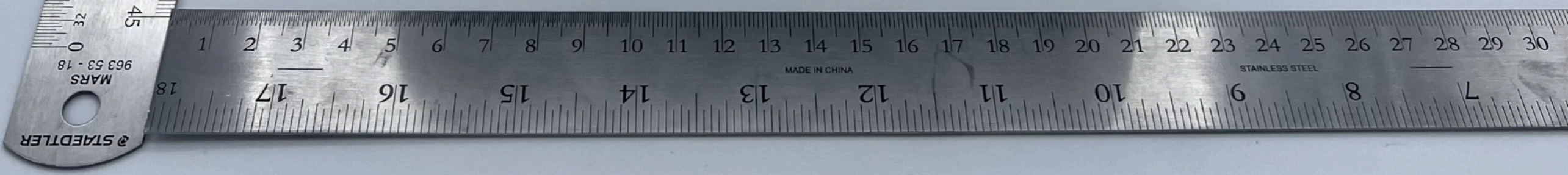
A2901

Rear Side - Power Button,
Headphone jack, HDMI port,
Two USB-A ports, A/C Inlet,
Gigabit Ethernet port,
Four USB-C ports



A2901

Left Side



A2901
Right Side

