



# ELEMENT MATERIALS TECHNOLOGY

## Morgan Hill

18855 Adams Court, Morgan Hill, CA 95037, USA  
Tel. +1.410.290.6652 / Fax +1.410.290.6654  
<http://www.element.com>



### SAR EVALUATION REPORT

**Applicant Name:**  
Apple Inc.  
One Apple Park Way  
Cupertino, CA 95014 USA

**Date of Testing:**  
12/08/2022  
**Test Site/Location:**  
Element, Morgan Hill, CA, USA  
**Document Serial No.:**  
1C2211040068-03.BCG

<b>FCC ID:</b>	<b>BCGA2872</b>
<b>APPLICANT:</b>	<b>APPLE, INC.</b>

**DUT Type:** Wireless Earbud  
**Application Type:** Certification  
**FCC Rule Part(s):** CFR §2.1093  
**Model:** A2872

Equipment Class	Band & Mode	Tx Frequency	SAR	
			1g Head (W/kg)	1g Body-Worn (W/kg)
DSS/DTS	Bluetooth	2402 - 2480 MHz	0.81	0.40

This wireless portable device has been shown to be capable of compliance for localized specific absorption rate (SAR) for uncontrolled environment/general population exposure limits specified in ANSI/IEEE C95.1-1992 and has been tested in accordance with the measurement procedures specified in Section 1.6 of this report; for North American frequency bands only.

I attest to the accuracy of data. All measurements reported herein were performed by me or were made under my supervision and are correct to the best of my knowledge and belief. I assume full responsibility for the completeness of these measurements and vouch for the qualifications of all persons taking them. Test results reported herein relate only to the item(s) tested.

RJ Ortanez  
Executive Vice President



The SAR Tick is an initiative of the Mobile & Wireless Forum (MWF). While a product may be considered eligible, use of the SAR Tick logo requires an agreement with the MWF. Further details can be obtained by emailing: [sartick@mwfai.info](mailto:sartick@mwfai.info).

<b>FCC ID:</b> BCGA2872	<b>SAR EVALUATION REPORT</b>	<b>Approved by:</b> Technical Manager
<b>Document S/N:</b> 1C2211040068-03.BCG	<b>DUT Type:</b> Wireless Earbud	Page 1 of 21

REV 22.0  
03/30/2022

# T A B L E O F C O N T E N T S

1	DEVICE UNDER TEST .....	3
2	INTRODUCTION.....	5
3	DOSIMETRIC ASSESSMENT .....	6
4	TEST CONFIGURATION POSITIONS .....	7
5	RF EXPOSURE LIMITS.....	8
6	FCC MEASUREMENT PROCEDURES .....	9
7	RF CONDUCTED POWERS .....	10
8	SYSTEM VERIFICATION.....	12
9	SAR DATA SUMMARY .....	14
10	SAR MEASUREMENT VARIABILITY.....	16
11	EQUIPMENT LIST.....	17
12	MEASUREMENT UNCERTAINTIES.....	18
13	CONCLUSION .....	19
14	REFERENCES.....	20
APPENDIX A:	SAR TEST PLOTS	
APPENDIX B:	SAR DIPOLE VERIFICATION PLOTS	
APPENDIX C:	SAR TISSUE SPECIFICATIONS	
APPENDIX D:	SAR SYSTEM VALIDATION	
APPENDIX E:	DUT ANTENNA DIAGRAM & SAR TEST SETUP PHOTOGRAPHS	
APPENDIX F:	PROBE AND DIPOLE CALIBRATION CERTIFICATES	

<b>FCC ID:</b> BCGA2872	<b>SAR EVALUATION REPORT</b>	<b>Approved by:</b> Technical Manager
<b>Document S/N:</b> 1C2211040068-03.BCG	<b>DUT Type:</b> Wireless Earbud	Page 2 of 21

REV 22.0  
03/30/2022

# 1 DEVICE UNDER TEST

## 1.1 Device Overview

Band & Mode	Operating Modes	Tx Frequency
Bluetooth	Data	2402 - 2480 MHz

## 1.2 Power Reduction for SAR

There is no power reduction used for any band/mode implemented in this device for SAR purposes.

## 1.3 Nominal and Maximum Output Power Specifications

This device operates using the following maximum and nominal output power specifications. SAR values were scaled to the maximum allowed power to determine compliance per KDB Publication 447498 D01v06.

### 1.3.1 Maximum Output Power

Mode / Band	Modulated Average (dBm)	
2.4 GHz Bluetooth BDR	Maximum	<b>14.00</b>
	Nominal	<b>13.00</b>
2.4 GHz Bluetooth EDR	Maximum	<b>9.00</b>
	Nominal	<b>8.00</b>
2.4 GHz Bluetooth BLE	Maximum	<b>9.00</b>
	Nominal	<b>8.00</b>

## 1.4 DUT Antenna Locations

Based on the expected use conditions, Head SAR was evaluated. Per manufacturer request, Body-Worn SAR was evaluated as an additional conservative SAR test condition. The antenna is located inside BCGA2872 – which is a wireless Bluetooth earbud for the Left ear. A diagram showing the location of the device antenna can be found in Appendix E. More information about the configurations evaluated for SAR can be found in Section 4.2 and Section 4.3.

## 1.5 Simultaneous Transmission Capabilities

This Device does not support any Simultaneous transmission Scenarios.

FCC ID: BCGA2872	SAR EVALUATION REPORT	Approved by: Technical Manager
Document S/N: 1C2211040068-03.BCG	DUT Type: Wireless Earbud	Page 3 of 21

REV 22.0  
03/30/2022

## 1.6 Guidance Applied

- FCC KDB Publication 447498 D01v06 (General SAR Guidance)
- FCC KDB Publication 865664 D01v01r04, D02v01r02 (SAR Measurements up to 6 GHz)

## 1.7 Device Serial Numbers

Several samples with identical hardware were used to support SAR testing. The manufacturer has confirmed that the device(s) tested have the same physical, mechanical, and thermal characteristics and are within operational tolerances expected for production units. The serial numbers used for each test are indicated alongside the results in Section 9.

<b>FCC ID:</b> BCGA2872	<b>SAR EVALUATION REPORT</b>	<b>Approved by:</b> Technical Manager
<b>Document S/N:</b> 1C2211040068-03.BCG	<b>DUT Type:</b> Wireless Earbud	Page 4 of 21

REV 22.0  
03/30/2022

The FCC and Innovation, Science, and Economic Development Canada have adopted the guidelines for evaluating the environmental effects of radio frequency (RF) radiation in ET Docket 93-62 on Aug. 6, 1996, and Health Canada Safety Code 6 to protect the public and workers from the potential hazards of RF emissions due to FCC-regulated portable devices. [1]

The safety limits used for the environmental evaluation measurements are based on the criteria published by the American National Standards Institute (ANSI) for localized specific absorption rate (SAR) in IEEE/ANSI C95.1-1992 Standard for Safety Levels with Respect to Human Exposure to Radio Frequency Electromagnetic Fields, 3 kHz to 300 GHz [3] and Health Canada RF Exposure Guidelines Safety Code 6 [22]. The measurement procedure described in IEEE/ANSI C95.3-2002 Recommended Practice for the Measurement of Potentially Hazardous Electromagnetic Fields - RF and Microwave [4] is used for guidance in measuring the Specific Absorption Rate (SAR) due to the RF radiation exposure from the Equipment Under Test (EUT). These criteria for SAR evaluation are similar to those recommended by the International Committee for Non-Ionizing Radiation Protection (ICNIRP) in Biological Effects and Exposure Criteria for Radiofrequency Electromagnetic Fields,” Report No. Vol 74. SAR is a measure of the rate of energy absorption due to exposure to an RF transmitting source. SAR values have been related to threshold levels for potential biological hazards.

## 2.1 SAR Definition

Specific Absorption Rate is defined as the time derivative (rate) of the incremental energy (dU) absorbed by (dissipated in) an incremental mass (dm) contained in a volume element (dV) of a given density ( $\rho$ ). It is also defined as the rate of RF energy absorption per unit mass at a point in an absorbing body (see Equation 2-1).

**Equation 2-1**  
**SAR Mathematical Equation**

$$SAR = \frac{d}{dt} \left( \frac{dU}{dm} \right) = \frac{d}{dt} \left( \frac{dU}{\rho dv} \right)$$

SAR is expressed in units of Watts per Kilogram (W/kg).

$$SAR = \frac{\sigma \cdot E^2}{\rho}$$

where:

- $\sigma$  = conductivity of the tissue-simulating material (S/m)
- $\rho$  = mass density of the tissue-simulating material (kg/m<sup>3</sup>)
- E = Total RMS electric field strength (V/m)

NOTE: The primary factors that control rate of energy absorption were found to be the wavelength of the incident field in relation to the dimensions and geometry of the irradiated organism, the orientation of the organism in relation to the polarity of field vectors, the presence of reflecting surfaces, and whether conductive contact is made by the organism with a ground plane.[6]

FCC ID: BCGA2872	SAR EVALUATION REPORT	Approved by: Technical Manager
Document S/N: 1C2211040068-03.BCG	DUT Type: Wireless Earbud	Page 5 of 21

REV 22.0  
03/30/2022

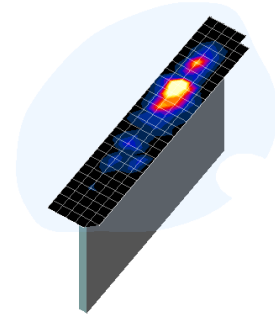
### 3

## DOSIMETRIC ASSESSMENT

### 3.1 Measurement Procedure

The evaluation was performed using the following procedure compliant to FCC KDB Publication 865664 D01v01r04 and IEEE 1528-2013:

1. The SAR distribution at the exposed side of the head or body was measured at a distance no greater than 5.0 mm from the inner surface of the shell. The area covered the entire dimension of the device-head and body interface, and the horizontal grid resolution was determined per FCC KDB Publication 865664 D01v01r04 (See Table 3-1) and IEEE 1528-2013.
2. The point SAR measurement was taken at the maximum SAR region determined from Step 1 to enable the monitoring of SAR fluctuations/drifts during the 1g/10g cube evaluation. SAR at this fixed point was measured and used as a reference value.
3. Based on the area scan data, the peak of the region with maximum SAR was determined by spline interpolation. Around this point, a volume was assessed according to the measurement resolution and volume size requirements of FCC KDB Publication 865664 D01v01r04 (See Table 3-1) and IEEE 1528-2013. On the basis of this data set, the spatial peak SAR value was evaluated with the following procedure (see references or the cDASY6 manual online for more details):
  - a. SAR values at the inner surface of the phantom are extrapolated from the measured values along the line away from the surface with spacing no greater than that in Table 3-1. The extrapolation was based on a least-squares algorithm. A polynomial of the fourth order was calculated through the points in the z-axis (normal to the phantom shell).
  - b. After the maximum interpolated values were calculated between the points in the cube, the SAR was averaged over the spatial volume (1g or 10g) using a 3D-Spline interpolation algorithm. The 3D-spline is composed of three one-dimensional splines with the “Not a knot” condition (in x, y, and z directions). The volume was then integrated with the trapezoidal algorithm. One thousand points (10 x 10 x 10) were obtained through interpolation, in order to calculate the averaged SAR.
  - c. All neighboring volumes were evaluated until no neighboring volume with a higher average value was found.
4. The SAR reference value, at the same location as step 2, was re-measured after the zoom scan was complete to calculate the SAR drift. If the drift deviated by more than 5%, the SAR test and drift measurements were repeated.



**Figure 3-1**  
Sample SAR Area Scan

**Table 3-1**  
Area and Zoom Scan Resolutions per FCC KDB Publication 865664 D01v01r04\*

Frequency	Maximum Area Scan Resolution (mm) ( $\Delta x_{\text{area}}, \Delta y_{\text{area}}$ )	Maximum Zoom Scan Resolution (mm) ( $\Delta x_{\text{zoom}}, \Delta y_{\text{zoom}}$ )	Maximum Zoom Scan Spatial Resolution (mm)			Minimum Zoom Scan Volume (mm) (x, y, z)
			Uniform Grid	Graded Grid		
			$\Delta z_{\text{zoom}}(n)$	$\Delta z_{\text{zoom}}(1)^*$	$\Delta z_{\text{zoom}}(n>1)^*$	
≤ 2 GHz	≤ 15	≤ 8	≤ 5	≤ 4	≤ 1.5* $\Delta z_{\text{zoom}}(n-1)$	≥ 30
2-3 GHz	≤ 12	≤ 5	≤ 5	≤ 4	≤ 1.5* $\Delta z_{\text{zoom}}(n-1)$	≥ 30
3-4 GHz	≤ 12	≤ 5	≤ 4	≤ 3	≤ 1.5* $\Delta z_{\text{zoom}}(n-1)$	≥ 28
4-5 GHz	≤ 10	≤ 4	≤ 3	≤ 2.5	≤ 1.5* $\Delta z_{\text{zoom}}(n-1)$	≥ 25
5-6 GHz	≤ 10	≤ 4	≤ 2	≤ 2	≤ 1.5* $\Delta z_{\text{zoom}}(n-1)$	≥ 22

\*Also compliant to IEEE 1528-2013 Table 6

FCC ID: BCGA2872	<b>SAR EVALUATION REPORT</b>	Approved by: Technical Manager
Document S/N: 1C2211040068-03.BCG	DUT Type: Wireless Earbud	Page 6 of 21

REV 22.0  
03/30/2022

## 4 TEST CONFIGURATION POSITIONS

### 4.1 Device Holder

The device holder is made out of low-loss POM material having the following dielectric parameters: relative permittivity  $\epsilon = 3$  and loss tangent  $\delta = 0.02$ .

### 4.2 Positioning for Head

This device is a wireless Bluetooth earbud for the left ear which is designed to be used in the ear canal. The antenna is located inside the earbud. SAR was evaluated with a separation distance of 0 mm between the earbud (the ear tip facing the phantom) and the flat phantom. The phantom is filled with head tissue equivalent medium.

### 4.3 Body-Worn Exposure Conditions

Per manufacturer request, Body-Worn SAR was evaluated as an additional conservative SAR test condition for the left earbud. The DUT was evaluated with a separation distance of 0 mm between the back side of the earbud and the flat phantom. The phantom is filled with head tissue equivalent medium.

<b>FCC ID:</b> BCGA2872	<b>SAR EVALUATION REPORT</b>	<b>Approved by:</b> Technical Manager
<b>Document S/N:</b> 1C2211040068-03.BCG	<b>DUT Type:</b> Wireless Earbud	Page 7 of 21

REV 22.0  
03/30/2022

## 5 RF EXPOSURE LIMITS

### 5.1 Uncontrolled Environment

UNCONTROLLED ENVIRONMENTS are defined as locations where there is the exposure of individuals who have no knowledge or control of their exposure. The general population/uncontrolled exposure limits are applicable to situations in which the general public may be exposed or in which persons who are exposed as a consequence of their employment may not be made fully aware of the potential for exposure or cannot exercise control over their exposure. Members of the general public would come under this category when exposure is not employment-related; for example, in the case of a wireless transmitter that exposes persons in its vicinity.

### 5.2 Controlled Environment

CONTROLLED ENVIRONMENTS are defined as locations where there is exposure that may be incurred by persons who are aware of the potential for exposure, (i.e., as a result of employment or occupation). In general, occupational/controlled exposure limits are applicable to situations in which persons are exposed as a consequence of their employment, who have been made fully aware of the potential for exposure and can exercise control over their exposure. This exposure category is also applicable when the exposure is of a transient nature due to incidental passage through a location where the exposure levels may be higher than the general population/uncontrolled limits, but the exposed person is fully aware of the potential for exposure and can exercise control over his or her exposure by leaving the area or by some other appropriate means.

**Table 5-1  
SAR Human Exposure Specified in ANSI/IEEE C95.1-1992 and Health Canada Safety Code 6**

HUMAN EXPOSURE LIMITS		
	UNCONTROLLED ENVIRONMENT <i>General Population</i> (W/kg) or (mW/g)	CONTROLLED ENVIRONMENT <i>Occupational</i> (W/kg) or (mW/g)
<b>Peak Spatial Average SAR</b> Head	1.6	8.0
<b>Whole Body SAR</b>	0.08	0.4
<b>Peak Spatial Average SAR</b> Hands, Feet, Ankle, Wrists, etc.	4.0	20

1. The Spatial Peak value of the SAR averaged over any 1 gram of tissue (defined as a tissue volume in the shape of a cube) and over the appropriate averaging time.
2. The Spatial Average value of the SAR averaged over the whole body.
3. The Spatial Peak value of the SAR averaged over any 10 grams of tissue (defined as a tissue volume in the shape of a cube) and over the appropriate averaging time.

FCC ID: BCGA2872	SAR EVALUATION REPORT	Approved by: Technical Manager
Document S/N: 1C2211040068-03.BCG	DUT Type: Wireless Earbud	Page 8 of 21

REV 22.0  
03/30/2022



## 6 FCC MEASUREMENT PROCEDURES

### 6.1 Measured and Reported SAR

Per FCC KDB Publication 447498 D01v06, when SAR is not measured at the maximum power level allowed for production units, the results must be scaled to the maximum tune-up tolerance limit according to the power applied to the individual channels tested to determine compliance. For simultaneous transmission, the measured aggregate SAR must be scaled according to the sum of the differences between the maximum tune-up tolerance and actual power used to test each transmitter. When SAR is measured at or scaled to the maximum tune-up tolerance limit, the results are referred to as *reported* SAR. The highest *reported* SAR results are identified on the grant of equipment authorization according to procedures in KDB 690783 D01v01r03.

<b>FCC ID:</b> BCGA2872	<b>SAR EVALUATION REPORT</b>	<b>Approved by:</b> Technical Manager
<b>Document S/N:</b> 1C2211040068-03.BCG	<b>DUT Type:</b> Wireless Earbud	Page 9 of 21

REV 22.0  
03/30/2022

# 7 RF CONDUCTED POWERS

## 7.1 Bluetooth Conducted Powers

Table 7-1  
Bluetooth Average RF Power

Frequency [MHz]	Modulation	Data Rate [Mbps]	Channel No.	Avg Conducted Power	
				[dBm]	[mW]
2402	GFSK	1.0	0	13.12	20.512
2441	GFSK	1.0	39	12.97	19.815
2480	GFSK	1.0	78	12.79	19.011

FCC ID: BCGA2872	SAR EVALUATION REPORT	Approved by: Technical Manager
Document S/N: 1C2211040068-03.BCG	DUT Type: Wireless Earbud	Page 10 of 21

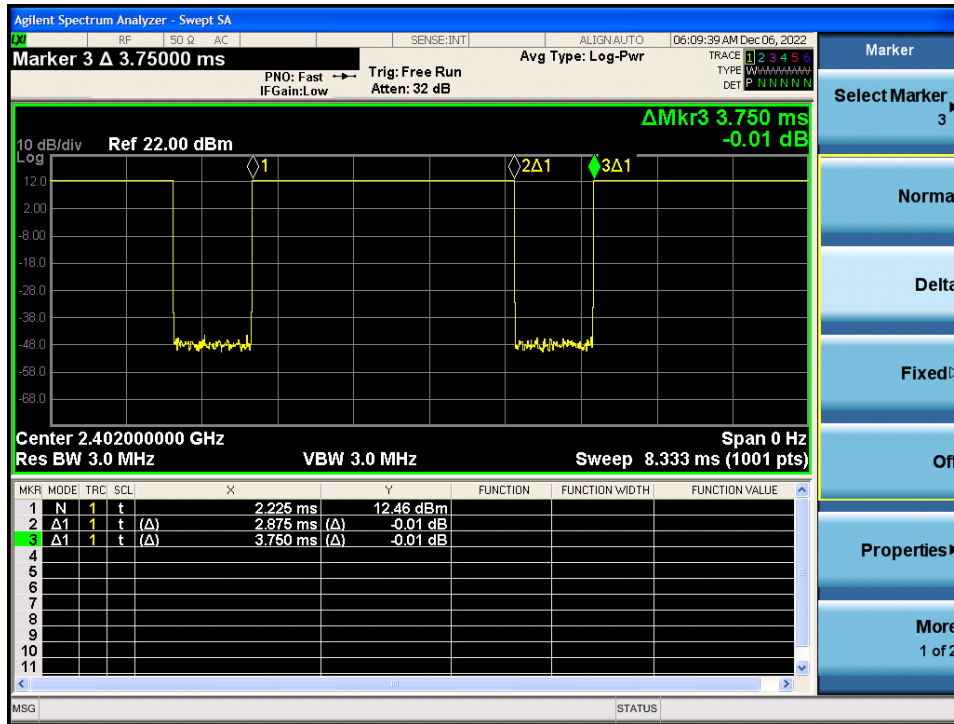
REV 22.0  
03/30/2022

## 7.2 Bluetooth Duty Cycle

### 7.2.1

### Maximum Bluetooth Transmission

Figure 7-1  
2.4 GHz Bluetooth Transmission Plot



Equation 7-1  
2.4 GHz Bluetooth Duty Cycle Calculation

$$Duty\ Cycle = \frac{Pulse\ Width}{Period} * 100\% = \frac{2.875\ ms}{3.750\ ms} * 100\% = 76.7\%$$

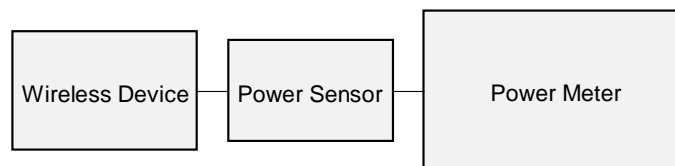


Figure 7-2  
Power Measurement Setup

FCC ID: BCGA2872	SAR EVALUATION REPORT	Approved by: Technical Manager
Document S/N: 1C2211040068-03.BCG	DUT Type: Wireless Earbud	Page 11 of 21

REV 22.0  
03/30/2022

## 8.1 Tissue Verification

**Table 8-1  
Measured Head Tissue Properties**

Calibrated for Tests Performed on:	Tissue Type	Tissue Temp During Calibration (°C)	Measured Frequency (MHz)	Measured Conductivity, $\sigma$ (S/m)	Measured Dielectric Constant, $\epsilon$	TARGET Conductivity, $\sigma$ (S/m)	TARGET Dielectric Constant, $\epsilon$	% dev $\sigma$	% dev $\epsilon$
12/08/2022	2450 Head	19.9	2300	1.659	39.481	1.670	39.500	-0.66%	-0.05%
			2310	1.666	39.465	1.679	39.480	-0.77%	-0.04%
			2320	1.673	39.448	1.687	39.460	-0.83%	-0.03%
			2400	1.735	39.355	1.756	39.289	-1.20%	0.17%
			2450	1.775	39.282	1.800	39.200	-1.39%	0.21%
			2480	1.798	39.247	1.833	39.162	-1.91%	0.22%
			2500	1.813	39.210	1.855	39.136	-2.26%	0.19%
			2510	1.820	39.191	1.866	39.123	-2.47%	0.17%
			2535	1.842	39.147	1.893	39.092	-2.69%	0.14%
			2550	1.854	39.132	1.909	39.073	-2.88%	0.15%
			2560	1.862	39.119	1.920	39.060	-3.02%	0.15%
			2600	1.892	39.048	1.964	39.009	-3.67%	0.10%
			2650	1.934	38.957	2.018	38.945	-4.16%	0.03%
			2680	1.958	38.909	2.051	38.907	-4.53%	0.01%
2700	1.974	38.874	2.073	38.882	-4.78%	-0.02%			

The above measured tissue parameters were used in the cDASY6 software. The cDASY6 software was used to perform interpolation to determine the dielectric parameters at the SAR test device frequencies (per KDB Publication 865664 D01v01r04 and IEEE 1528-2013 6.6.1.2). The tissue parameters listed in the SAR test plots may slightly differ from the table above due to significant digit rounding in the software.

Per April 2019 TCB Workshop Notes, single head-tissue simulating liquid specified in IEC 62209-1 is permitted to use for all SAR tests.

FCC ID: BCGA2872	SAR EVALUATION REPORT	Approved by: Technical Manager
Document S/N: 1C2211040068-03.BCG	DUT Type: Wireless Earbud	Page 12 of 21

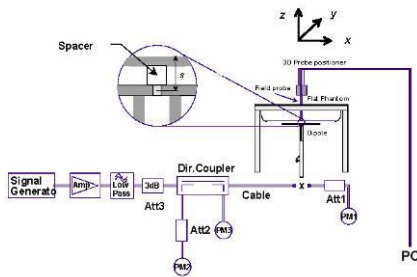
REV 22.0  
03/30/2022

## 8.2 Test System Verification

Prior to SAR assessment, the system is verified to  $\pm 10\%$  of the SAR measurement on the reference dipole at the time of calibration by the calibration facility. Full system validation status and result summary can be found in Appendix D.

**Table 8-2  
System Verification Results – 1g**

System Verification TARGET & MEASURED												
SAR System	Tissue Frequency (MHz)	Tissue Type	Date	Amb. Temp. (C)	Liquid Temp. (C)	Input Power (W)	Source SN	Probe SN	Measured SAR1g (W/kg)	1W Target SAR1g (W/kg)	1W Normalized SAR 1g (W/kg)	Deviation1g (%)
AM1	2450	HEAD	12/08/2022	20.8	20.2	0.10	750	7420	5.270	52.60	52.700	0.19%



**Figure 8-1  
System Verification Setup Diagram**



**Figure 8-2  
System Verification Setup Photo**

FCC ID: BCGA2872	SAR EVALUATION REPORT	Approved by: Technical Manager
Document S/N: 1C2211040068-03.BCG	DUT Type: Wireless Earbud	Page 13 of 21

REV 22.0  
03/30/2022

## 9.1 Standalone Head SAR Data

**Table 9-1  
Bluetooth Head SAR**

MEASUREMENT RESULTS																
FREQUENCY		Mode	Service	Maximum Allowed Power [dBm]	Conducted Power [dBm]	Power Drift [dB]	Spacing	Device Serial Number	Data Rate (Mbps)	Earbud	Duty Cycle (%)	SAR (1g)	Scaling Factor (Cond Power)	Scaling Factor (Duty Cycle)	Reported SAR (1g)	Plot #
MHz	Ch.											(W/kg)			(W/kg)	
2402	0	Bluetooth	FHSS	14.00	13.12	0.00	0 mm	FL6JN0SX24FJ	1	Left	76.7	0.571	1.225	1.010	0.706	
2441	39	Bluetooth	FHSS	14.00	12.97	-0.02	0 mm	FL6JN0SX24FJ	1	Left	76.7	0.578	1.268	1.010	0.740	
2480	78	Bluetooth	FHSS	14.00	12.79	-0.02	0 mm	FL6JN0SX24FJ	1	Left	76.7	0.610	1.321	1.010	0.814	A1
ANSI / IEEE C95.1 1992 - SAFETY LIMIT Spatial Peak Uncontrolled Exposure/General Population							Head 1.6 W/kg (mW/g) averaged over 1 gram									

Note: The reported SAR was scaled to 77.5% transmission duty factor to determine compliance since the duty factor of the device is permanently limited to 77.5% per the manufacturer.

## 9.2 Standalone Body-Worn SAR Data

**Table 9-2  
Bluetooth Body-Worn SAR**

MEASUREMENT RESULTS																
FREQUENCY		Mode	Service	Maximum Allowed Power [dBm]	Conducted Power [dBm]	Power Drift [dB]	Spacing	Device Serial Number	Data Rate (Mbps)	Earbud	Duty Cycle (%)	SAR (1g)	Scaling Factor (Cond Power)	Scaling Factor (Duty Cycle)	Reported SAR (1g)	Plot #
MHz	Ch.											(W/kg)			(W/kg)	
2402	0	Bluetooth	FHSS	14.00	13.12	0.02	0 mm	FL6JN0SX24FJ	1	Left	76.7	0.255	1.225	1.010	0.315	
2441	39	Bluetooth	FHSS	14.00	12.97	-0.04	0 mm	FL6JN0SX24FJ	1	Left	76.7	0.273	1.268	1.010	0.350	
2480	78	Bluetooth	FHSS	14.00	12.79	-0.03	0 mm	FL6JN0SX24FJ	1	Left	76.7	0.301	1.321	1.010	0.402	A2
ANSI / IEEE C95.1 1992 - SAFETY LIMIT Spatial Peak Uncontrolled Exposure/General Population							Body 1.6 W/kg (mW/g) averaged over 1 gram									

Note: The reported SAR was scaled to 77.5% transmission duty factor to determine compliance since the duty factor of the device is permanently limited to 77.5% per the manufacturer.

## 9.3 SAR Test Notes

### General Notes:

- Batteries are fully charged at the beginning of the SAR measurements.
- Liquid tissue depth was at least 15.0 cm for all frequencies.
- The manufacturer has confirmed that the device(s) tested have the same physical, mechanical, and thermal characteristics and are within operational tolerances expected for production units.
- SAR results were scaled to the maximum allowed power to demonstrate compliance per FCC KDB Publication 447498 D01v06.
- To demonstrate compliance for Head, SAR testing was performed on a flat phantom filled with head tissue equivalent medium.
- Per manufacturer request, Body-Worn SAR was additionally evaluated as a conservative SAR test condition for the left earbud (BCGA2872).
- Per FCC KDB 865664 D01v01r04, variability SAR tests were not required since measured SAR results for all frequency bands were less than 0.8 W/kg. Please see section 10 for variability analysis.
- The orange highlights throughout the report represents the highest scaled SAR per Equipment Class.

FCC ID: BCGA2872	SAR EVALUATION REPORT		Approved by: Technical Manager
Document S/N: 1C2211040068-03.BCG	DUT Type: Wireless Earbud		Page 14 of 21

Bluetooth Notes

1. Bluetooth SAR was evaluated with a test mode with hopping disabled with DH5 operation. The reported SAR was scaled to the 77.5% transmission duty factor to determine compliance for a more conservative exposure analysis. See section 7.2 for the time domain plot and calculation for the duty factor of the device.

<b>FCC ID:</b> BCGA2872	<b>SAR EVALUATION REPORT</b>	<b>Approved by:</b> Technical Manager
<b>Document S/N:</b> 1C2211040068-03.BCG	<b>DUT Type:</b> Wireless Earbud	Page 15 of 21

REV 22.0  
03/30/2022

## 10 SAR MEASUREMENT VARIABILITY

### 10.1 Measurement Variability

Per FCC KDB Publication 865664 D01v01r04, SAR measurement variability was not assessed for each frequency band since all measured SAR values are  $<0.8\text{W/kg}$  for 1g SAR.

### 10.2 Measurement Uncertainty

The measured SAR was  $<1.5\text{ W/kg}$  for 1g and  $<3.75\text{ W/kg}$  for 10g for all frequency bands. Therefore, per KDB Publication 865664 D01v01r04, the extended measurement uncertainty analysis per IEEE 1528-2013 was not required.

<b>FCC ID:</b> BCGA2872	<b>SAR EVALUATION REPORT</b>	<b>Approved by:</b> Technical Manager
<b>Document S/N:</b> 1C2211040068-03.BCG	<b>DUT Type:</b> Wireless Earbud	Page 16 of 21

REV 22.0  
03/30/2022



# 11 EQUIPMENT LIST

Manufacturer	Model	Description	Cal Date	Cal Interval	Cal Due	Serial Number
Agilent	E4440A	PSA Series Spectrum Analyzer	3/22/2022	Annual	3/22/2023	MY46186272
Agilent	N5182A	MXG Vector Signal Generator	1/12/2022	Annual	1/12/2023	MY47420837
Agilent	N9020A	MXA Signal Analyzer	3/22/2022	Annual	3/22/2023	MY50200571
Amplifier Research	15S1G6	Amplifier	CBT	N/A	CBT	343972
Anritsu	MA24106A	USB Power Sensor	3/2/2022	Annual	3/2/2023	1827532
Anritsu	MA24106A	USB Power Sensor	3/2/2022	Annual	3/2/2023	1827533
Anritsu	MA2411B	Pulse Power Sensor	3/2/2022	Annual	3/2/2023	1126066
Anritsu	ML2495A	Power Meter	3/17/2022	Annual	3/17/2023	941001
Control Company	4352	Long Stem Thermometer	9/10/2021	Biennial	9/10/2023	210774685
Control Company	4040	Therm./ Clock/ Humidity Monitor	3/12/2021	Biennial	3/12/2023	210202151
HEWLETT PACKARD	8753E	Network Analyzer	12/30/2021	Annual	12/30/2022	US38161081
Keysight	772D	Dual Directional Coupler	CBT	N/A	CBT	MY52180215
MCL	BW-N10W5+	10dB Attenuator	CBT	N/A	CBT	1611
MCL	BW-N3W5+	3dB Attenuator	CBT	N/A	CBT	1812
MCL	BW-N6W5+	6dB Attenuator	CBT	N/A	CBT	N/A
Mini-Circuits	NLP-2950+	Low Pass Filter	CBT	N/A	CBT	N/A
Mini-Circuits	ZHDC-16-63-S+	50-6000MHz Bidirectional Coupler	CBT	N/A	CBT	N/A
Pasternack	PE5011-1	Torque Wrench	12/21/2021	Biennial	12/21/2023	N/A
SPEAG	D2450V2	2450 MHz SAR Dipole	5/11/2022	Annual	5/11/2023	750
SPEAG	DAE4	Dasy Data Acquisition Electronics	10/13/2022	Annual	10/13/2023	1333
SPEAG	EX3DV4	SAR Probe	10/20/2022	Annual	10/20/2023	7420
SPEAG	MAIA	Modulation and Audio Interference Analyzer	CBT	N/A	CBT	1237
SPEAG	DAK-3.5	Dielectric Assessment Kit	11/14/2022	Annual	11/14/2023	1121

Note: CBT (Calibrated Before Testing). Prior to testing, the measurement paths containing a cable, amplifier, attenuator, coupler, or filter were connected to a calibrated source (i.e., a signal generator) to determine the losses of the measurement path. The power meter offset was then adjusted to compensate for the measurement system losses. This level offset is stored within the power meter before measurements are made. This calibration verification procedure applies to the system verification and output power measurements. The calibrated reading is then taken directly from the power meter after compensation of the losses for all final power measurements.

FCC ID: BCGA2872	<b>SAR EVALUATION REPORT</b>	Approved by: Technical Manager
Document S/N: 1C2211040068-03.BCG	DUT Type: Wireless Earbud	Page 17 of 21

REV 22.0  
03/30/2022

# 12

# MEASUREMENT UNCERTAINTIES

a	b	c	d	e= f(d,k)	f	g	h = c x f/e	i = c x g/e	k
Uncertainty Component	IEEE 1528 Sec.	Tol. (± %)	Prob. Dist.	Div.	c <sub>i</sub> 1gm	c <sub>i</sub> 10 gms	1gm u <sub>i</sub> (± %)	10gms u <sub>i</sub> (± %)	v <sub>i</sub>
<b>Measurement System</b>									
Probe Calibration	E.2.1	7	N	1	1	1	7.0	7.0	∞
Axial Isotropy	E.2.2	0.25	N	1	0.7	0.7	0.2	0.2	∞
Hemishperical Isotropy	E.2.2	1.3	N	1	0.7	0.7	0.9	0.9	∞
Boundary Effect	E.2.3	2	R	1.732	1	1	1.2	1.2	∞
Linearity	E.2.4	0.3	N	1	1	1	0.3	0.3	∞
System Detection Limits	E.2.4	0.25	R	1.732	1	1	0.1	0.1	∞
Modulation Response	E.2.5	4.8	R	1.732	1	1	2.8	2.8	∞
Readout Electronics	E.2.6	0.3	N	1	1	1	0.3	0.3	∞
Response Time	E.2.7	0.8	R	1.732	1	1	0.5	0.5	∞
Integration Time	E.2.8	2.6	R	1.732	1	1	1.5	1.5	∞
RF Ambient Conditions - Noise	E.6.1	3	R	1.732	1	1	1.7	1.7	∞
RF Ambient Conditions - Reflections	E.6.1	3	R	1.732	1	1	1.7	1.7	∞
Probe Positioner Mechanical Tolerance	E.6.2	0.8	R	1.732	1	1	0.5	0.5	∞
Probe Positioning w/ respect to Phantom	E.6.3	6.7	R	1.732	1	1	3.9	3.9	∞
Extrapolation, Interpolation & Integration algorithms for Max. SAR Evaluation	E.5	4	R	1.732	1	1	2.3	2.3	∞
<b>Test Sample Related</b>									
Test Sample Positioning	E.4.2	3.12	N	1	1	1	3.1	3.1	35
Device Holder Uncertainty	E.4.1	1.67	N	1	1	1	1.7	1.7	5
Output Power Variation - SAR drift measurement	E.2.9	5	R	1.732	1	1	2.9	2.9	∞
SAR Scaling	E.6.5	0	R	1.732	1	1	0.0	0.0	∞
<b>Phantom &amp; Tissue Parameters</b>									
Phantom Uncertainty (Shape & Thickness tolerances)	E.3.1	7.6	R	1.73	1.0	1.0	4.4	4.4	∞
Liquid Conductivity - measurement uncertainty	E.3.3	4.3	N	1	0.78	0.71	3.3	3.0	76
Liquid Permittivity - measurement uncertainty	E.3.3	4.2	N	1	0.23	0.26	1.0	1.1	75
Liquid Conductivity - Temperature Uncertainty	E.3.4	3.4	R	1.732	0.78	0.71	1.5	1.4	∞
Liquid Permittivity - Temperature Uncertainty	E.3.4	0.6	R	1.732	0.23	0.26	0.1	0.1	∞
Liquid Conductivity - deviation from target values	E.3.2	5.0	R	1.73	0.64	0.43	1.8	1.2	∞
Liquid Permittivity - deviation from target values	E.3.2	5.0	R	1.73	0.60	0.49	1.7	1.4	∞
<b>Comblned Standard Uncertainty (k=1)</b>	RSS						12.2	12.0	191
<b>Expanded Uncertainty (95% CONFIDENCE LEVEL)</b>	k=2						24.4	24.0	

The above measurement uncertainties are according to IEEE Std. 1528-2013

<b>FCC ID:</b> BCGA2872	<b>SAR EVALUATION REPORT</b>	<b>Approved by:</b> Technical Manager
<b>Document S/N:</b> 1C2211040068-03.BCG	<b>DUT Type:</b> Wireless Earbud	Page 18 of 21

REV 22.0  
03/30/2022

## 13 CONCLUSION

### 13.1 Measurement Conclusion

The SAR evaluation indicates that the EUT complies with the RF radiation exposure limits of the FCC and Innovation, Science, and Economic Development Canada, with respect to all parameters subject to this test. These measurements were taken to simulate the RF effects of RF exposure under worst-case conditions. Precise laboratory measures were taken to assure repeatability of the tests. The results and statements relate only to the item(s) tested.

Please note that the absorption and distribution of electromagnetic energy in the body are very complex phenomena that depend on the mass, shape, and size of the body, the orientation of the body with respect to the field vectors, and the electrical properties of both the body and the environment. Other variables that may play a substantial role in possible biological effects are those that characterize the environment (e.g., ambient temperature, air velocity, relative humidity, and body insulation) and those that characterize the individual (e.g., age, gender, activity level, debilitation, or disease). Because various factors may interact with one another to vary the specific biological outcome of an exposure to electromagnetic fields, any protection guide should consider maximal amplification of biological effects as a result of field-body interactions, environmental conditions, and physiological variables. [3]

<b>FCC ID:</b> BCGA2872	<b>SAR EVALUATION REPORT</b>	<b>Approved by:</b> Technical Manager
<b>Document S/N:</b> 1C2211040068-03.BCG	<b>DUT Type:</b> Wireless Earbud	Page 19 of 21

REV 22.0  
03/30/2022

## 14 REFERENCES

- [1] Federal Communications Commission, ET Docket 93-62, Guidelines for Evaluating the Environmental Effects of Radiofrequency Radiation, Aug. 1996.
- [2] ANSI/IEEE C95.1-2005, American National Standard safety levels with respect to human exposure to radio frequency electromagnetic fields, 3kHz to 300GHz, New York: IEEE, 2006.
- [3] ANSI/IEEE C95.1-1992, American National Standard safety levels with respect to human exposure to radio frequency electromagnetic fields, 3kHz to 300GHz, New York: IEEE, Sept. 1992.
- [4] ANSI/IEEE C95.3-2002, IEEE Recommended Practice for the Measurement of Potentially Hazardous Electromagnetic Fields - RF and Microwave, New York: IEEE, December 2002.
- [5] IEEE Standards Coordinating Committee 39 –Standards Coordinating Committee 34 – IEEE Std. 1528-2013, IEEE Recommended Practice for Determining the Peak Spatial-Average Specific Absorption Rate (SAR) in the Human Head from Wireless Communications Devices: Measurement Techniques.
- [6] NCRP, National Council on Radiation Protection and Measurements, Biological Effects and Exposure Criteria for RadioFrequency Electromagnetic Fields, NCRP Report No. 86, 1986. Reprinted Feb. 1995.
- [7] T. Schmid, O. Egger, N. Kuster, Automated E-field scanning system for dosimetric assessments, IEEE Transaction on Microwave Theory and Techniques, vol. 44, Jan. 1996, pp. 105-113.
- [8] K. Pokovic, T. Schmid, N. Kuster, Robust setup for precise calibration of E-field probes in tissue simulating liquids at mobile communications frequencies, ICECOM97, Oct. 1997, pp. 1 -124.
- [9] K. Pokovic, T. Schmid, and N. Kuster, E-field Probe with improved isotropy in brain simulating liquids, Proceedings of the ELMAR, Zadar, Croatia, June 23-25, 1996, pp. 172-175.
- [10] Schmid & Partner Engineering AG, Application Note: Data Storage and Evaluation, June 1998, p2.
- [11] V. Hombach, K. Meier, M. Burkhardt, E. Kuhn, N. Kuster, The Dependence of EM Energy Absorption upon Human Modeling at 900 MHz, IEEE Transaction on Microwave Theory and Techniques, vol. 44 no. 10, Oct. 1996, pp. 1865-1873.
- [12] N. Kuster and Q. Balzano, Energy absorption mechanism by biological bodies in the near field of dipole antennas above 300MHz, IEEE Transaction on Vehicular Technology, vol. 41, no. 1, Feb. 1992, pp. 17-23.
- [13] G. Hartsgrove, A. Kraszewski, A. Surowiec, Simulated Biological Materials for Electromagnetic Radiation Absorption Studies, University of Ottawa, Bioelectromagnetics, Canada: 1987, pp. 29-36.
- [14] Q. Balzano, O. Garay, T. Manning Jr., Electromagnetic Energy Exposure of Simulated Users of Portable Cellular Telephones, IEEE Transactions on Vehicular Technology, vol. 44, no.3, Aug. 1995.
- [15] W. Gander, Computermathematik, Birkhaeuser, Basel, 1992.
- [16] W.H. Press, S.A. Teukolsky, W.T. Vetterling, and B.P. Flannery, Numerical Recipes in C, The Art of Scientific Computing, Second edition, Cambridge University Press, 1992.
- [17] N. Kuster, R. Kastle, T. Schmid, Dosimetric evaluation of mobile communications equipment with known precision, IEEE Transaction on Communications, vol. E80-B, no. 5, May 1997, pp. 645-652.
- [18] CENELEC CLC/SC111B, European Prestandard (prENV 50166-2), Human Exposure to Electromagnetic Fields High-frequency: 10kHz-300GHz, Jan. 1995.

<b>FCC ID:</b> BCGA2872	<b>SAR EVALUATION REPORT</b>	<b>Approved by:</b> Technical Manager
<b>Document S/N:</b> 1C2211040068-03.BCG	<b>DUT Type:</b> Wireless Earbud	Page 20 of 21

REV 22.0  
03/30/2022

- [19] Prof. Dr. Niels Kuster, ETH, Eidgenössische Technische Hochschule Zürich, Dosimetric Evaluation of the Cellular Phone.
- [20] IEC 62209-1, Measurement procedure for the assessment of specific absorption rate of human exposure to radio frequency fields from hand-held and body-mounted wireless communication devices - Part 1: Devices used next to the ear (Frequency range of 300 MHz to 6 GHz), July 2016.
- [21] Innovation, Science, Economic Development Canada RSS-102 Radio Frequency Exposure Compliance of Radiocommunication Apparatus (All Frequency Bands) Issue 5, March 2015.
- [22] Health Canada Safety Code 6 Limits of Human Exposure to Radio Frequency Electromagnetic Fields in the Frequency Range from 3 kHz – 300 GHz, 2015
- [23] FCC SAR Test Procedures for 2G-3G Devices, Mobile Hotspot and UMPC Devices KDB Publications 941225, D01-D07
- [24] SAR Measurement Guidance for IEEE 802.11 Transmitters, KDB Publication 248227 D01
- [25] FCC SAR Considerations for Handsets with Multiple Transmitters and Antennas, KDB Publications 648474 D03-D04
- [26] FCC SAR Evaluation Considerations for Laptop, Notebook, Netbook and Tablet Computers, FCC KDB Publication 616217 D04
- [27] FCC SAR Measurement and Reporting Requirements for 100MHz – 6 GHz, KDB Publications 865664 D01-D02
- [28] FCC General RF Exposure Guidance and SAR Procedures for Dongles, KDB Publication 447498, D01-D02
- [29] Anexo à Resolução No. 533, de 10 de Setembro de 2009.

<b>FCC ID:</b> BCGA2872	<b>SAR EVALUATION REPORT</b>	<b>Approved by:</b> Technical Manager
<b>Document S/N:</b> 1C2211040068-03.BCG	<b>DUT Type:</b> Wireless Earbud	Page 21 of 21

REV 22.0  
03/30/2022