

A2780
Internal View

WF3 (BT) antenna structure

WF2/BT antenna structure

WF1/BT antenna structure

HDMI Port

USB-C Port

SD Card Slot

MagSafe Port

2 x USB-C Port

Audio Port

MLB

Speaker structure

Speaker structure

Battery

Multi-touch Trackpad

Battery

Battery

A2780

WF1/BT, WF2/BT, WF3 (BT)
antenna structure and feed-
Front



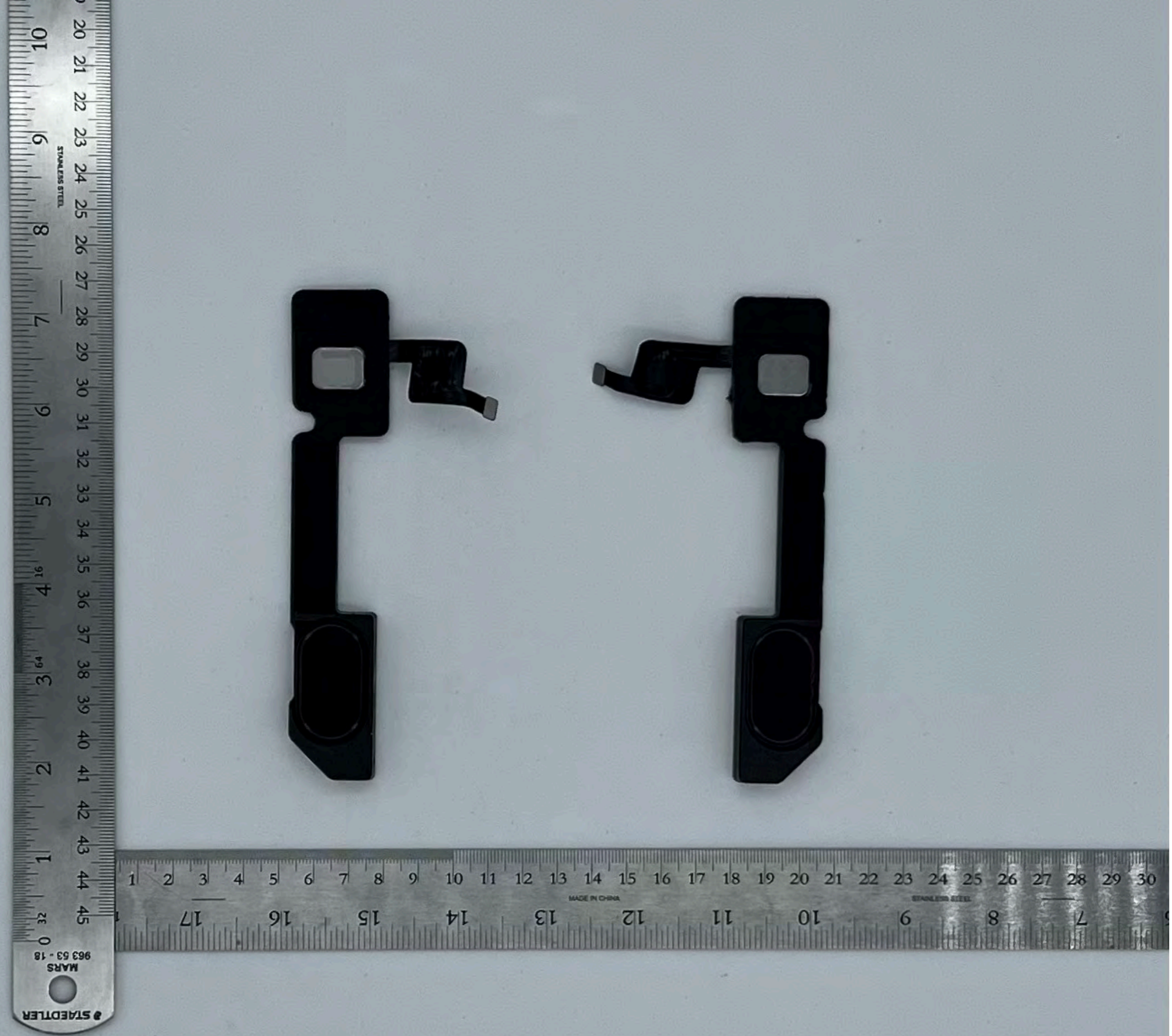
A2780

WF1/BT, WF2/BT, WF3 (BT)
antenna structure and feed-
Back



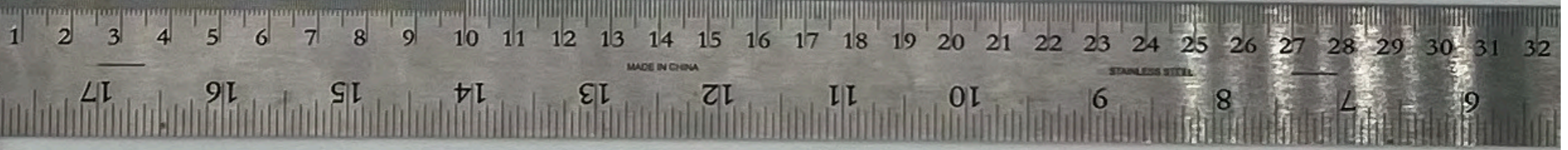
A2780

Left and right
speaker
structure- Front



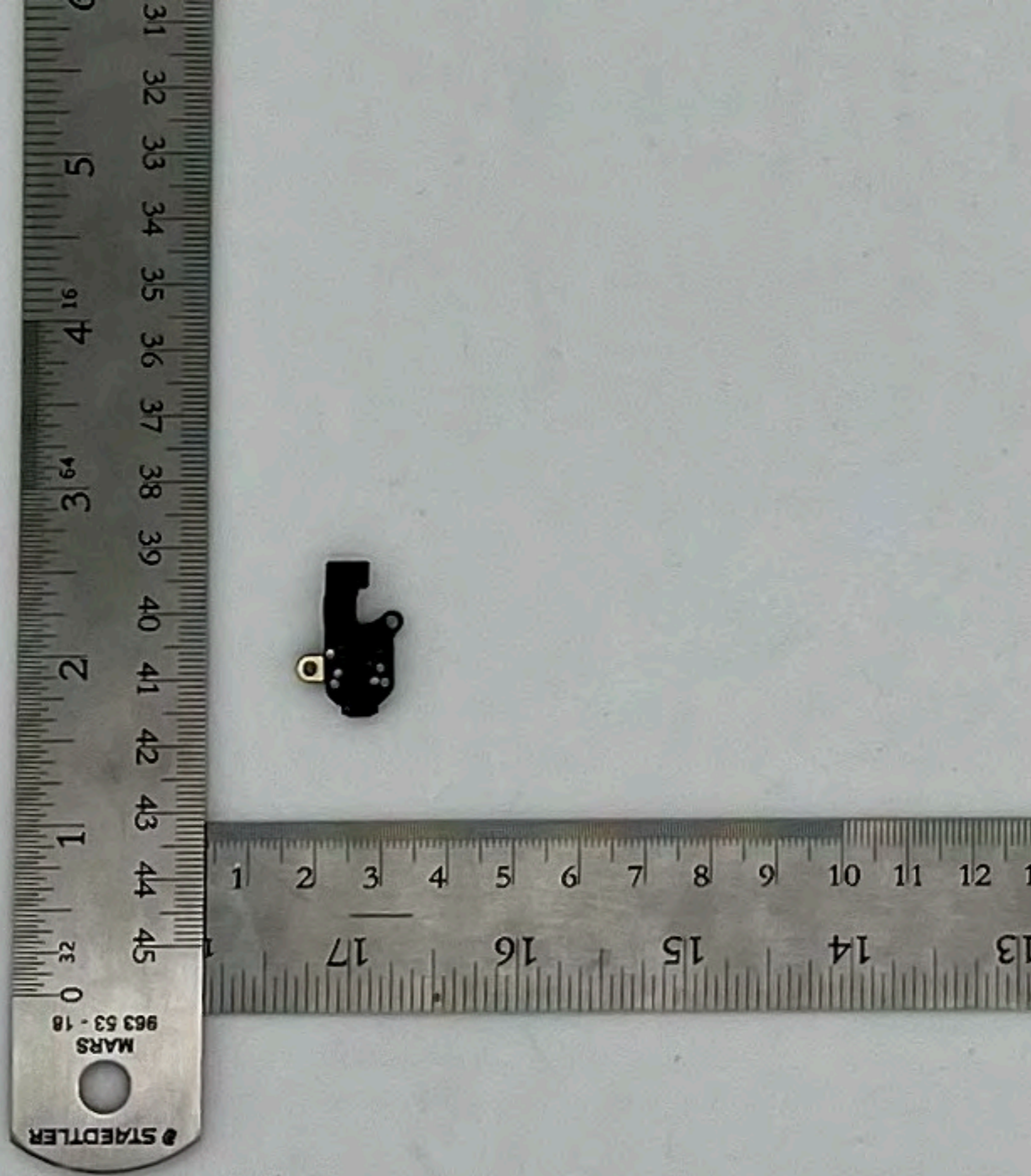
A2780

Left and right
speaker
structure- Back



A2780

Headphone jack assembly-
Front



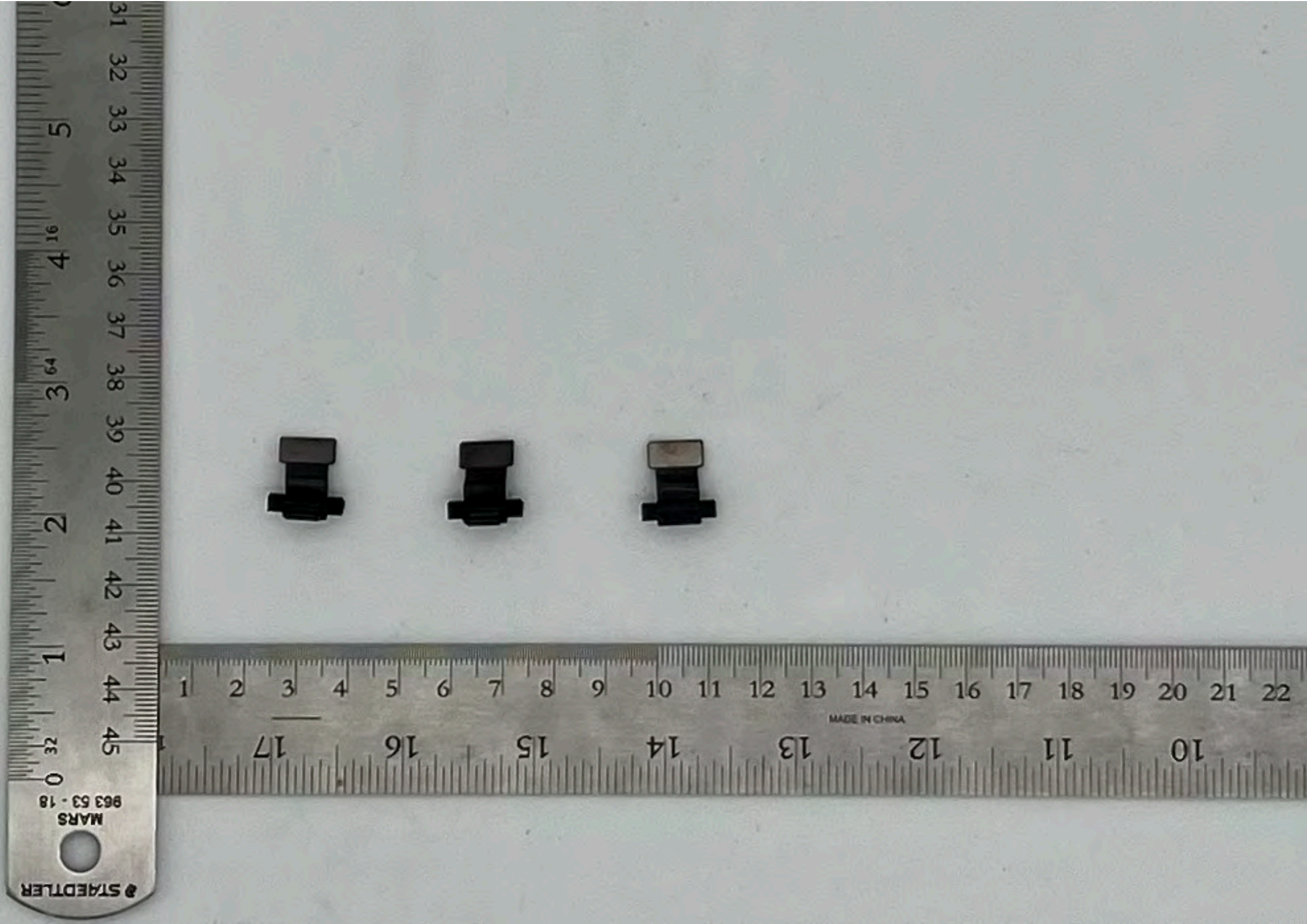
A2780

Headphone jack assembly-
Back



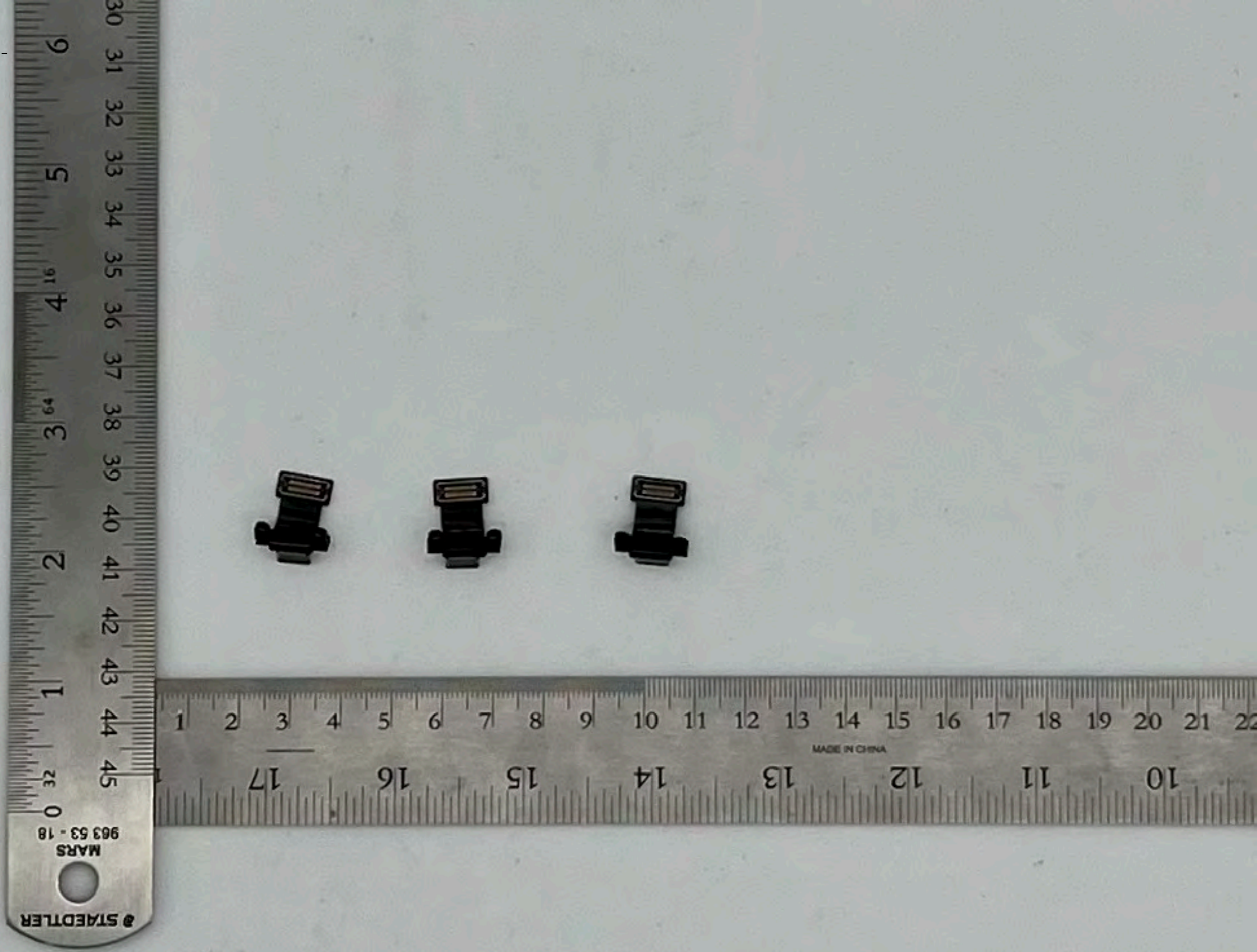
A2780

USB-C Port -
Front



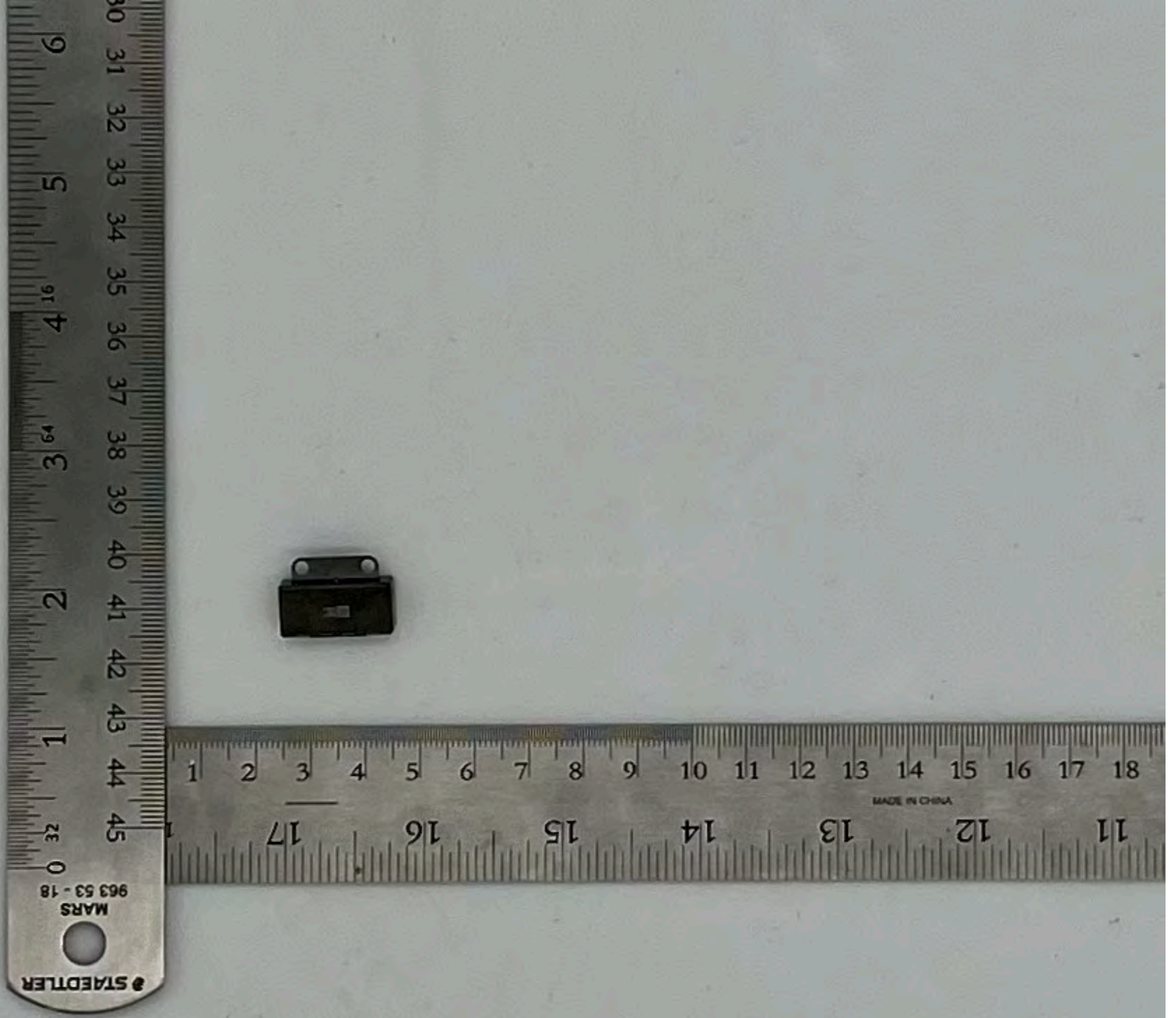
A2780

USB-C Port -
Back

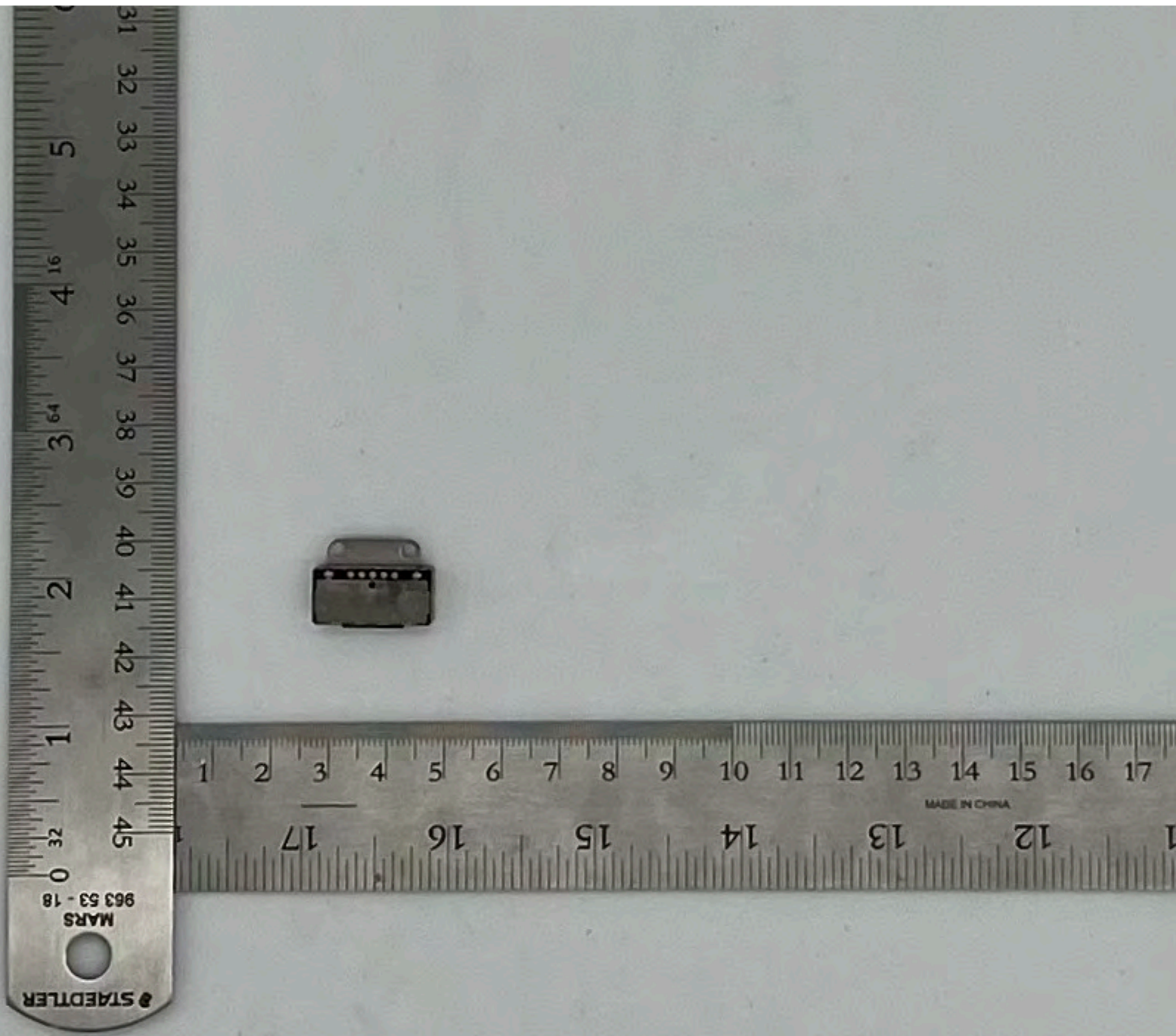


A2780

MagSafe Port -
Front

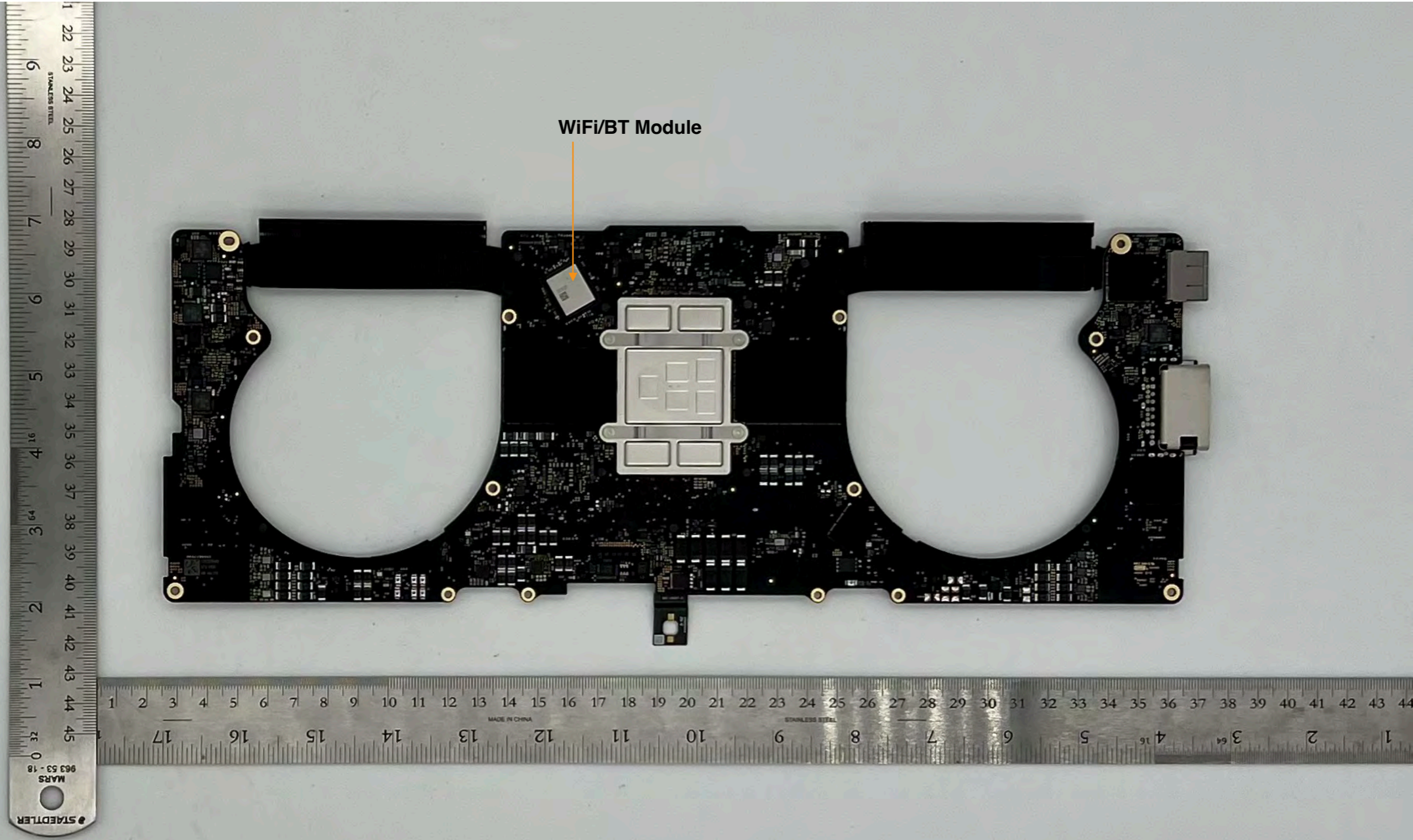


A2780
MagSafe Port-
Back



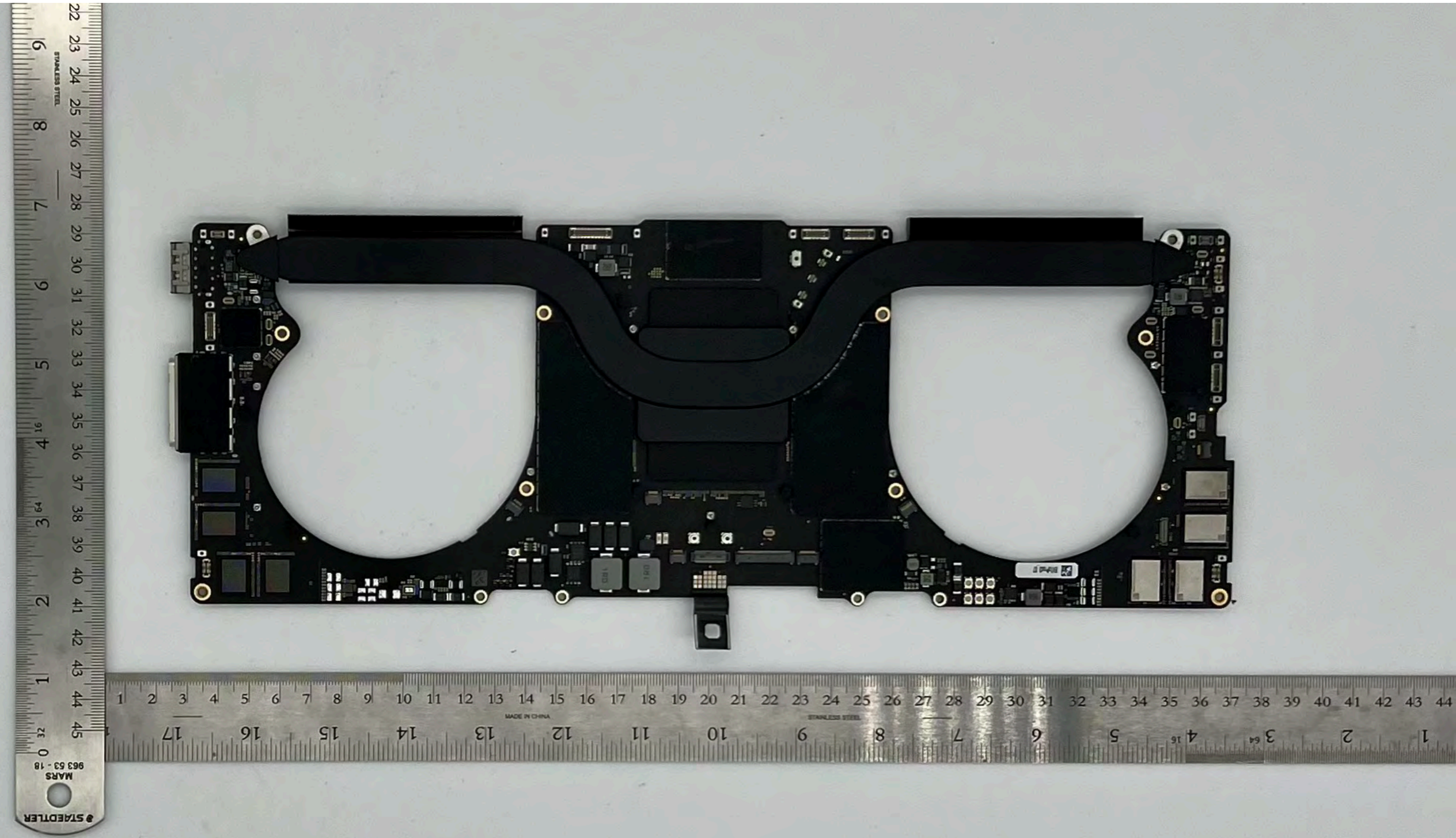
A2780

MLB with shields- Front



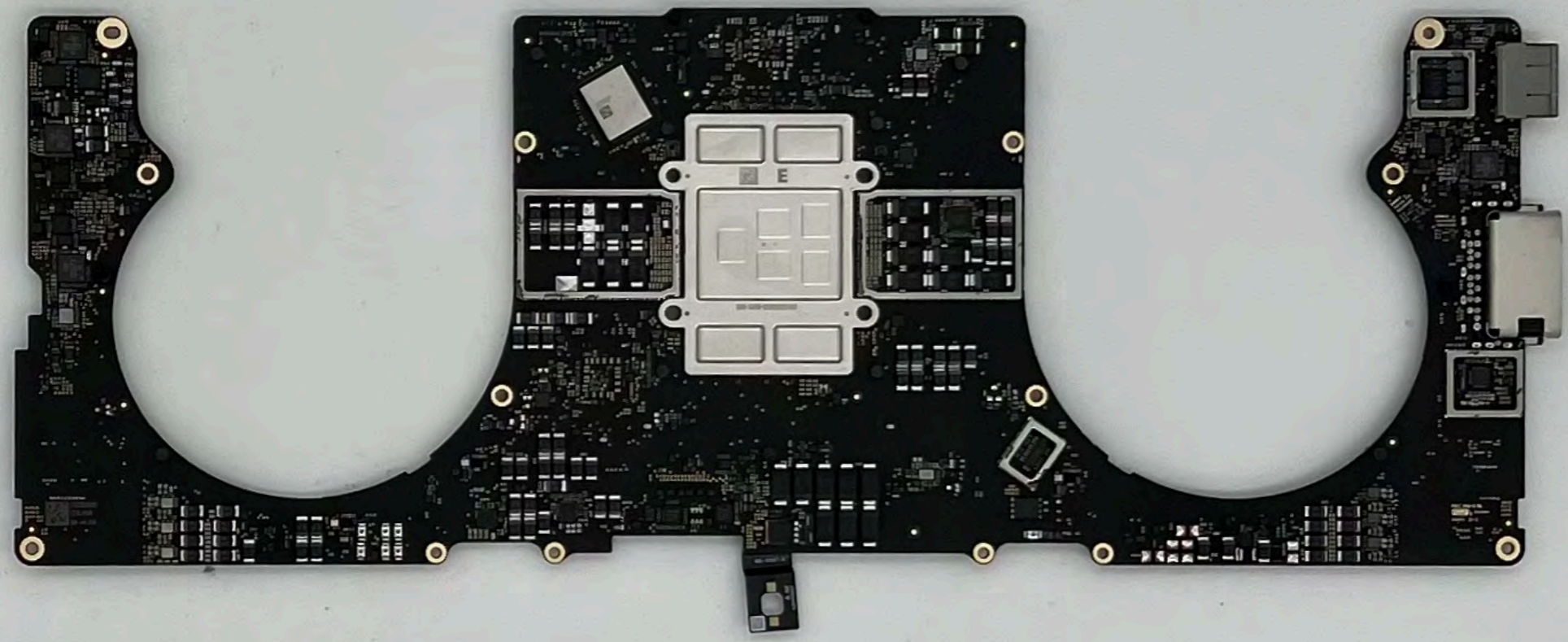
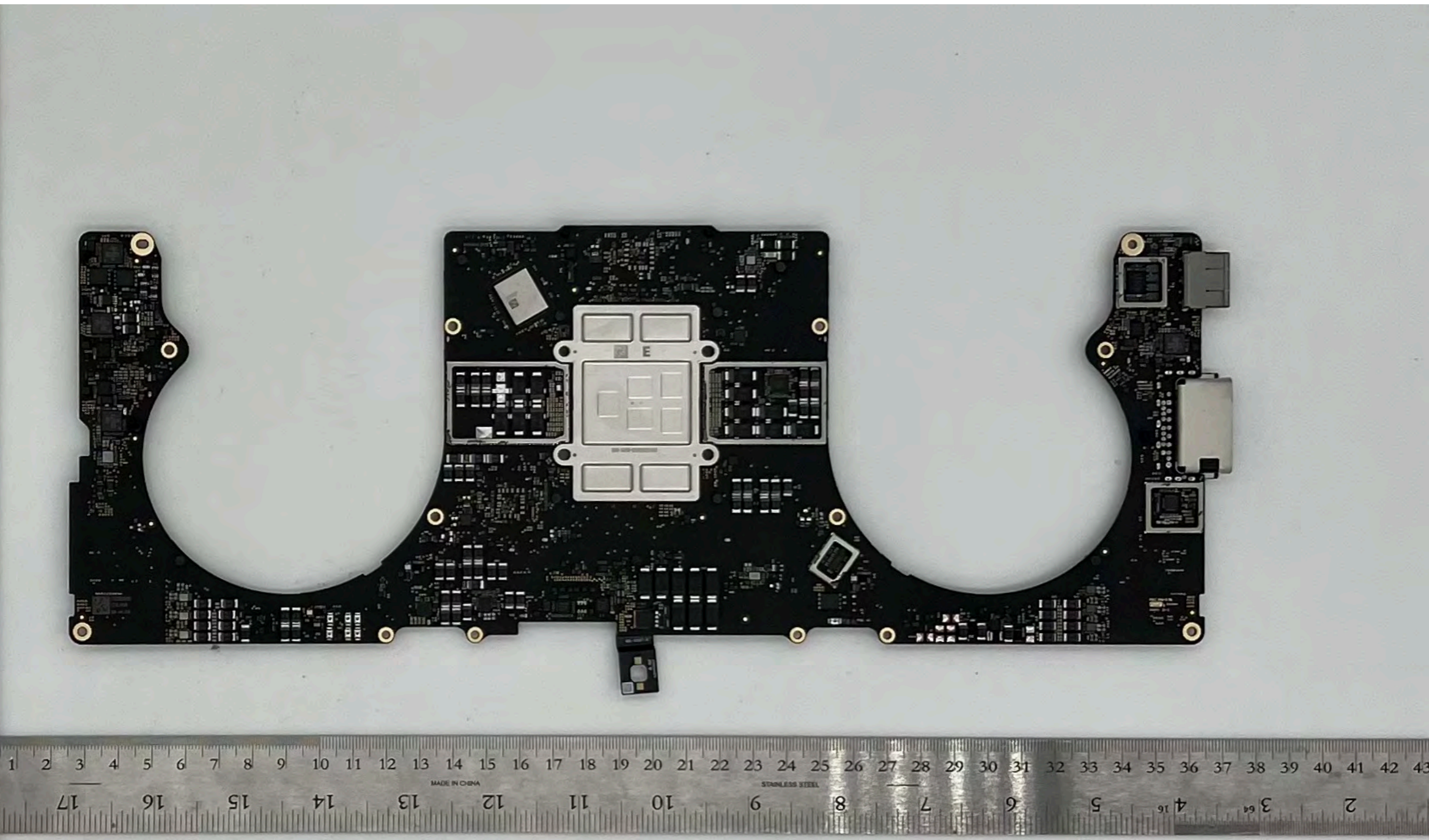
A2780

MLB with shields- Back



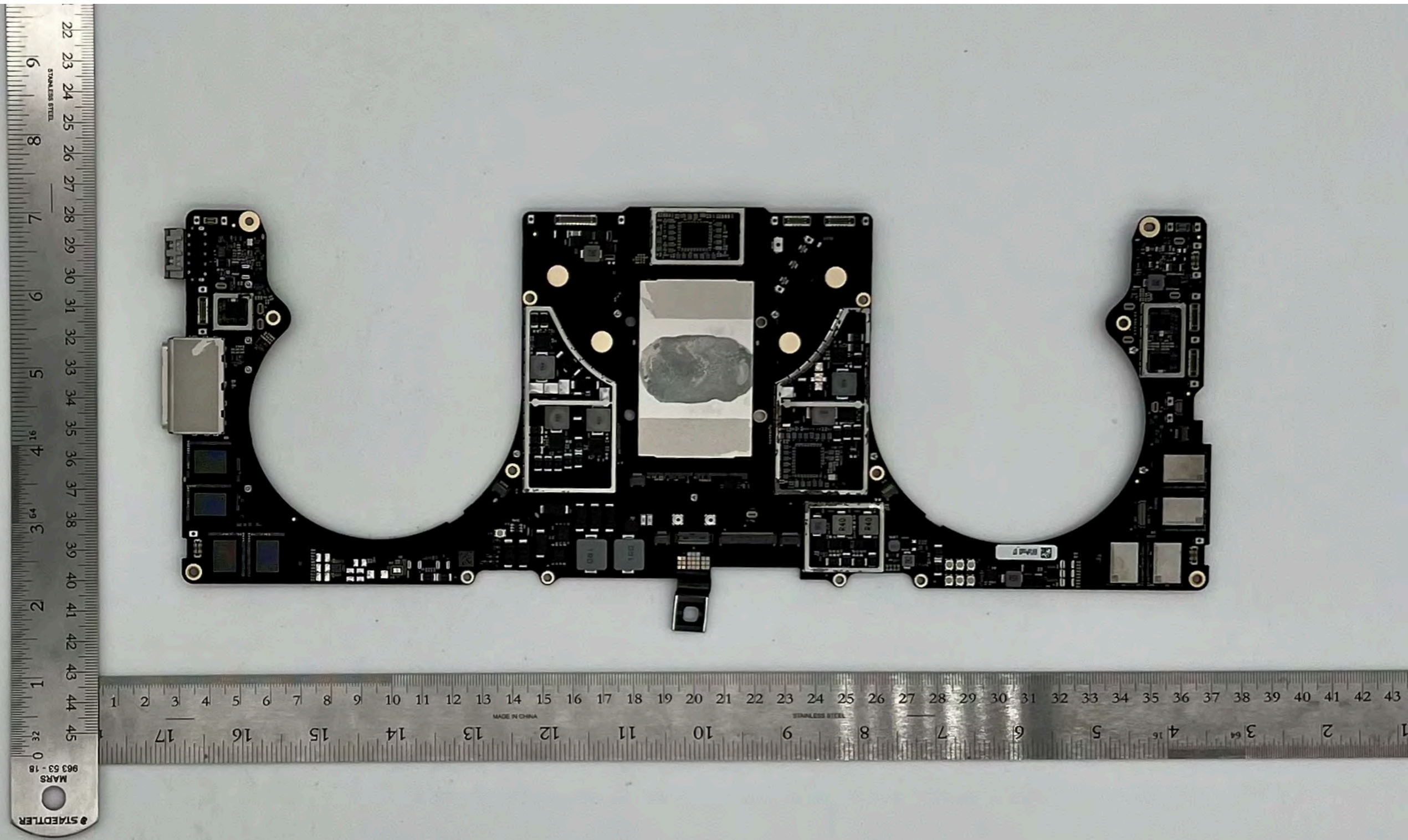
A2780

MLB without shields-
Front

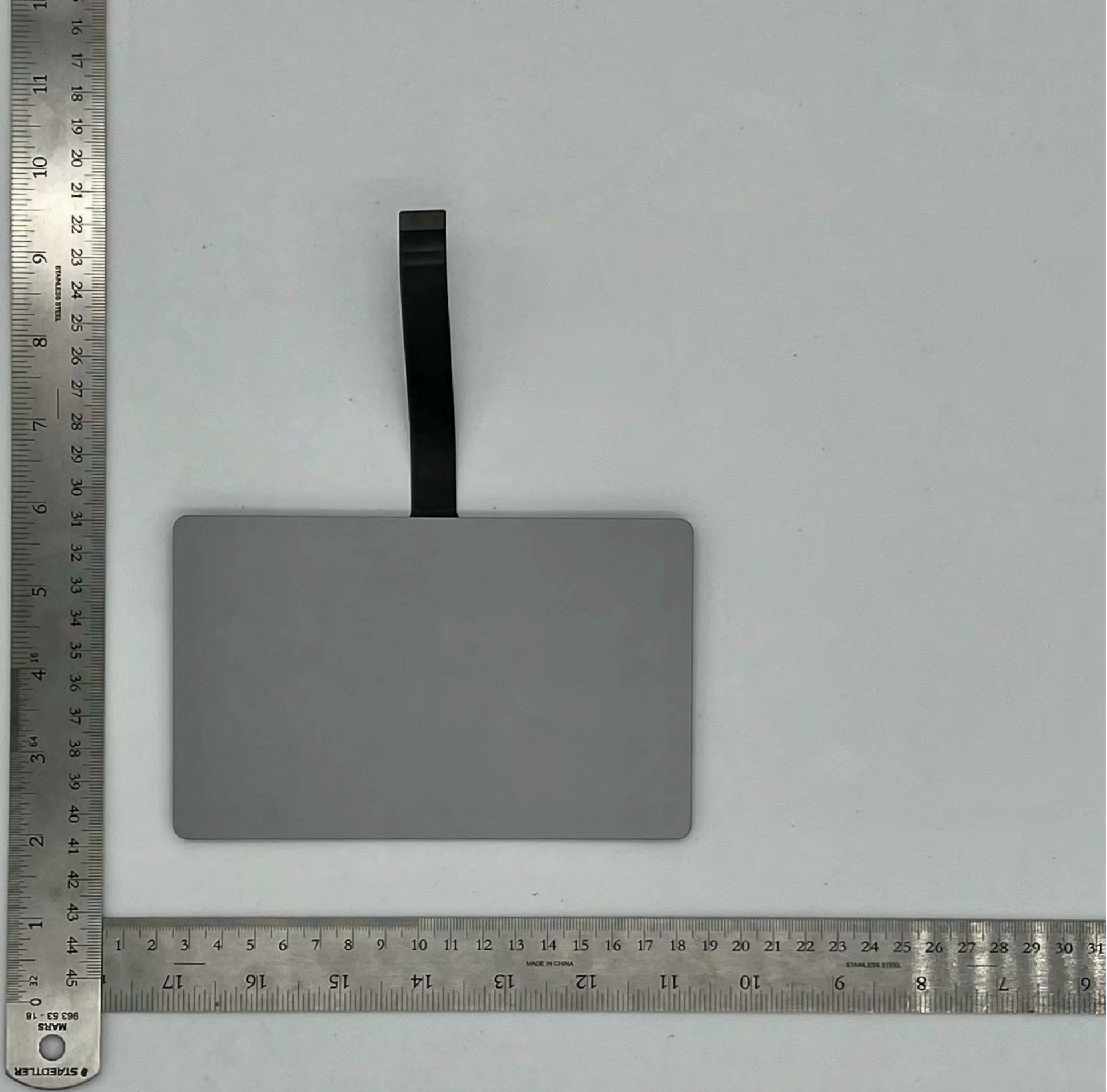


A2780

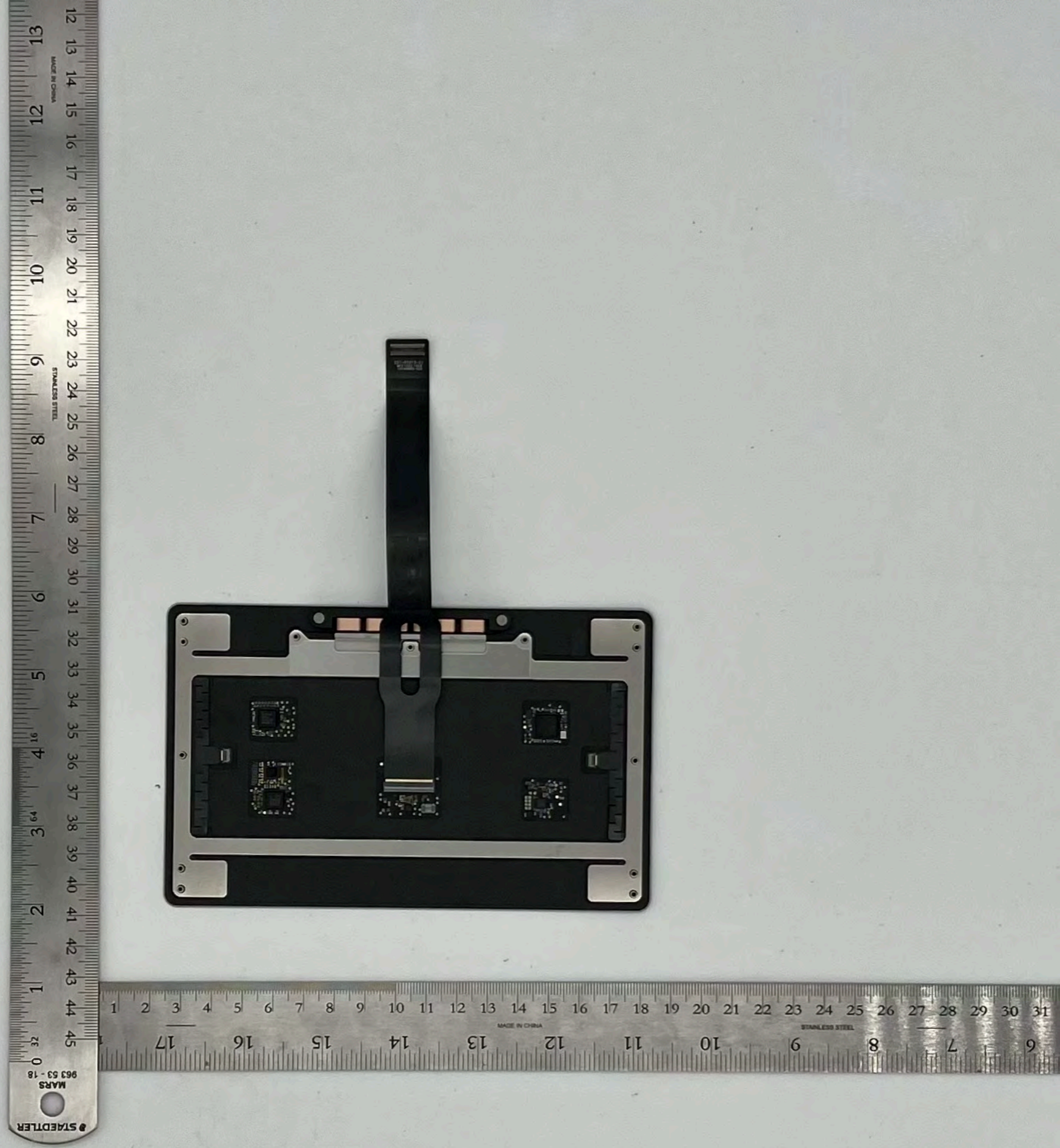
MLB without shields-
Back



A2780
Multi-touch
Trackpad-
Front

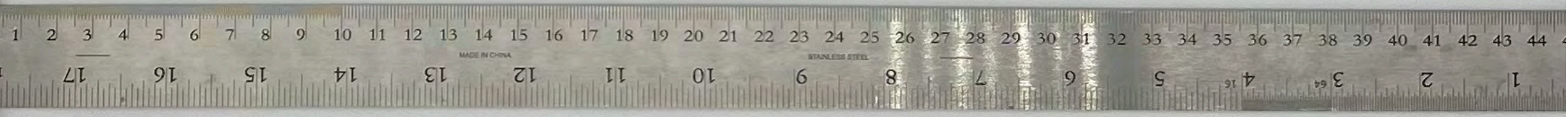
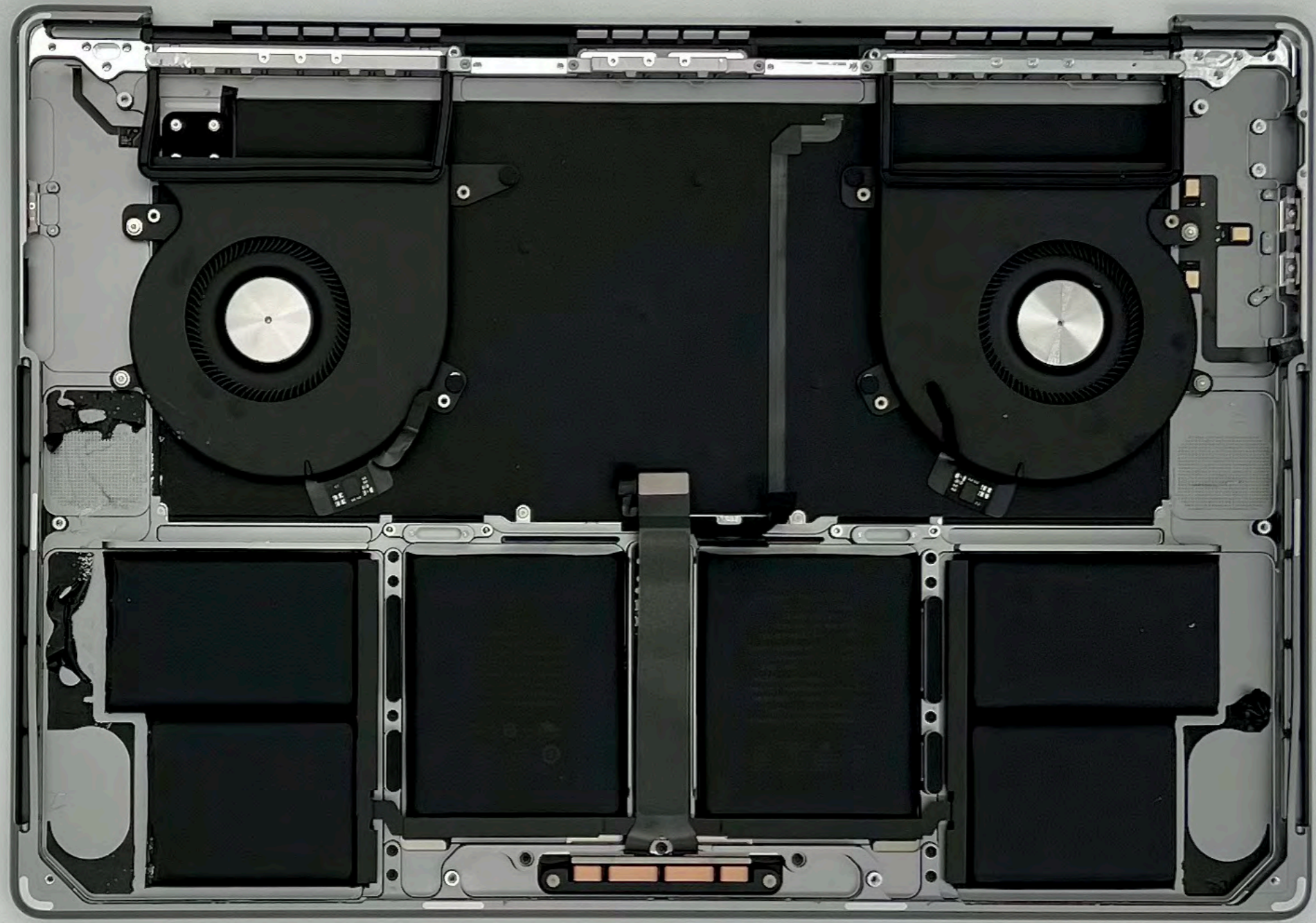
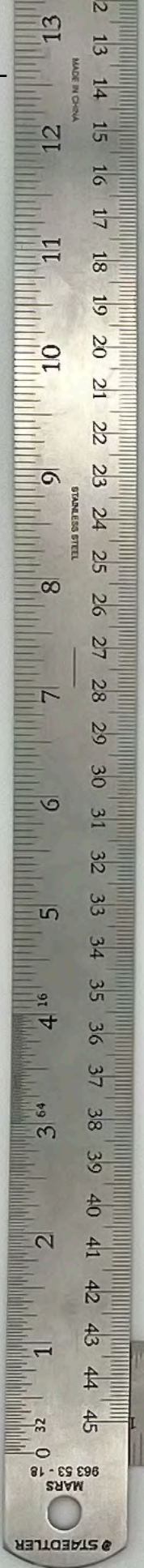


A2780
Multi-touch
Trackpad-
Back



A2780

Keyboard-
Back



A2780
Display
assembly-
Front



A2780
Display
assembly-
Back

