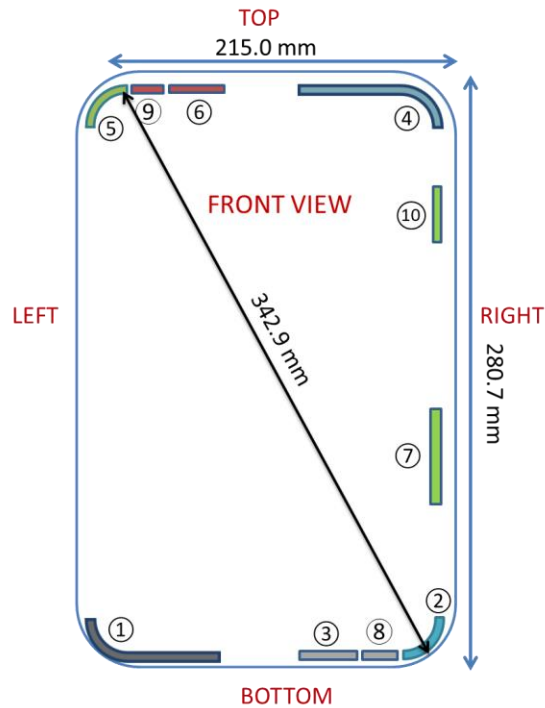


## APPENDIX E: DUT ANTENNA DIAGRAM & SAR TEST SETUP PHOTOGRAPHS

FCC ID: BCGA2764	SAR EVALUATION REPORT	Approved by: Quality Manager
DUT Type: Tablet Device		APPENDIX E: Page 1 of 7

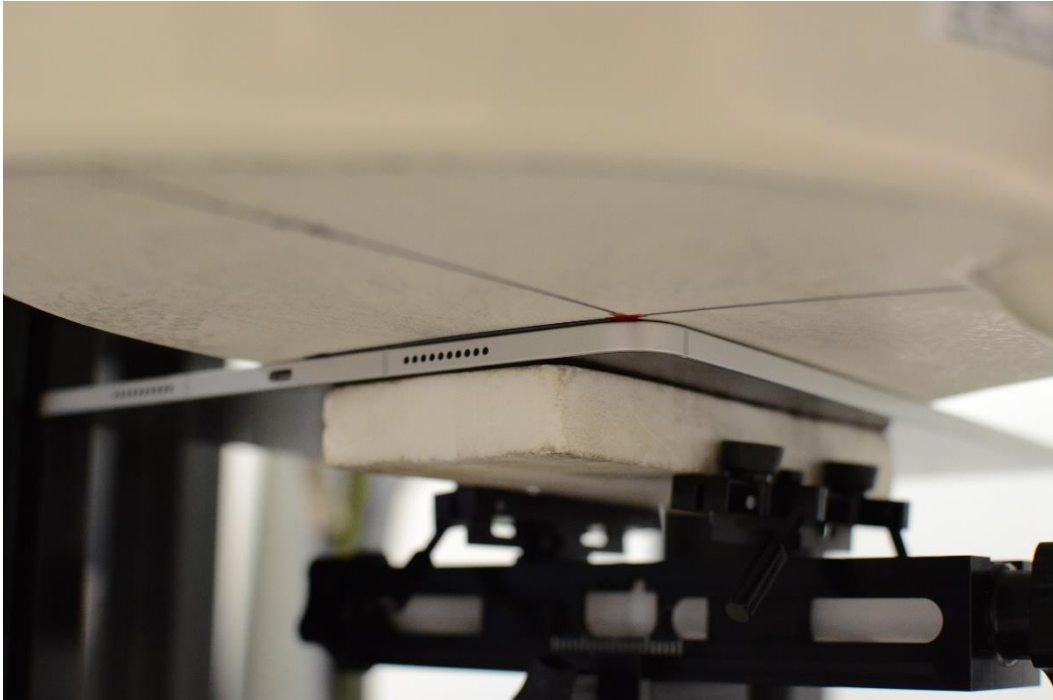


- ① Antenna 1: Cell Antenna Tx/Rx
  - 1. UMTS Band II/IV/V
  - 2. LTE Band 71/12/17/13/14/26/5/66/4/25/2/30/7/41/48
  - 3. NR FR1 n71/n12/n14/n26/n5/n66/n70/n25/n2/n30/n41/n48/n77
  - 4. LTE Band 29 Rx only
  - 5. NR FR1 n29 Rx only
- ② Antenna 2a: Cell/WiFi/BT Antenna Tx/Rx
  - 1. 2.4 GHz WiFi/BT
  - 2. LTE Band 48
  - 3. NR FR1 n48/n77
- ③ Antenna 2b: Cell Antenna Tx/Rx
  - 1. UMTS Band II/IV
  - 2. LTE Band 66/4/25/2/30/7/41
  - 3. NR FR1 n66/n70/n25/n2/n30/n7/n41
  - 4. GPS
- ④ Antenna 3: Cell Tx/Rx
  - 1. UMTS Band II/IV/V
  - 2. LTE Band 71/12/17/13/14/26/5/66/4/25/2/30/7/41/48
  - 3. NR FR1 n71/n12/n14/n26/n5/n66/n70/n25/n2/n30/n41/n48/n77
  - 4. LTE Band 29 Rx only
  - 5. NR FR1 n29 Rx only
- ⑤ Antenna 4a: WiFi/BT Antenna Tx/Rx
  - 1. 2.4 GHz WiFi/BT
  - 2. 5GHz WIFI
  - 3. LTE Band 46 Rx only
  - 4. WIFI 6E
  - 5. NB NII
- ⑥ Antenna 4b: Cell/WiFi Antenna Tx/Rx
  - 1. UMTS Band II/IV
  - 2. LTE Band 66/4/25/2/30/7/41/48
  - 3. NR FR1 n66/n70/n25/n2/n41/n48
  - 4. GPS
- ⑦ Antenna 5b: WiFi Antenna Tx/Rx
  - 1. 5GHz WIFI
  - 2. LTE Band 46 Rx only
  - 3. WIFI 6E
  - 4. NB NII
- ⑧ Antenna M3
  - 1. FR2 N260/n261
- ⑨ Antenna M2
  - 1. FR2 N260/n261
- ⑩ Antenna M0
  - 1. FR2 N260/n261

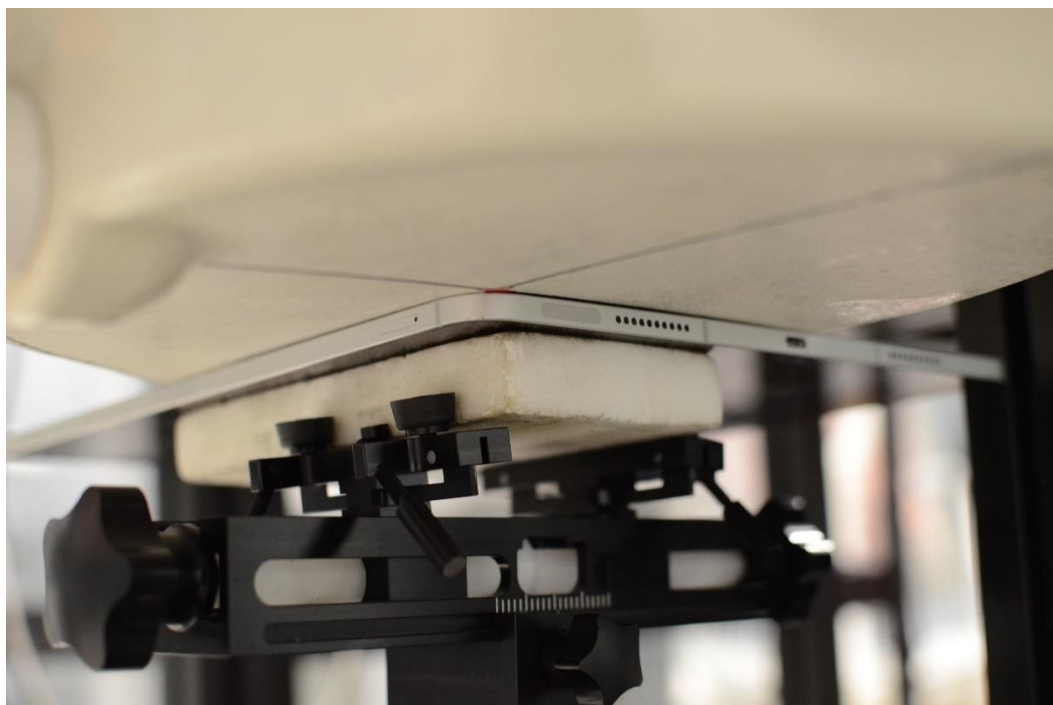
Note: Exact antenna dimensions and separation distances are shown in the Technical Descriptions in the FCC Filing.

**Figure E-1**  
**DUT Antenna Locations**

FCC ID: BCGA2764	<b>SAR EVALUATION REPORT</b>	Approved by: Quality Manager
DUT Type: Tablet Device		APPENDIX E: Page 2 of 7

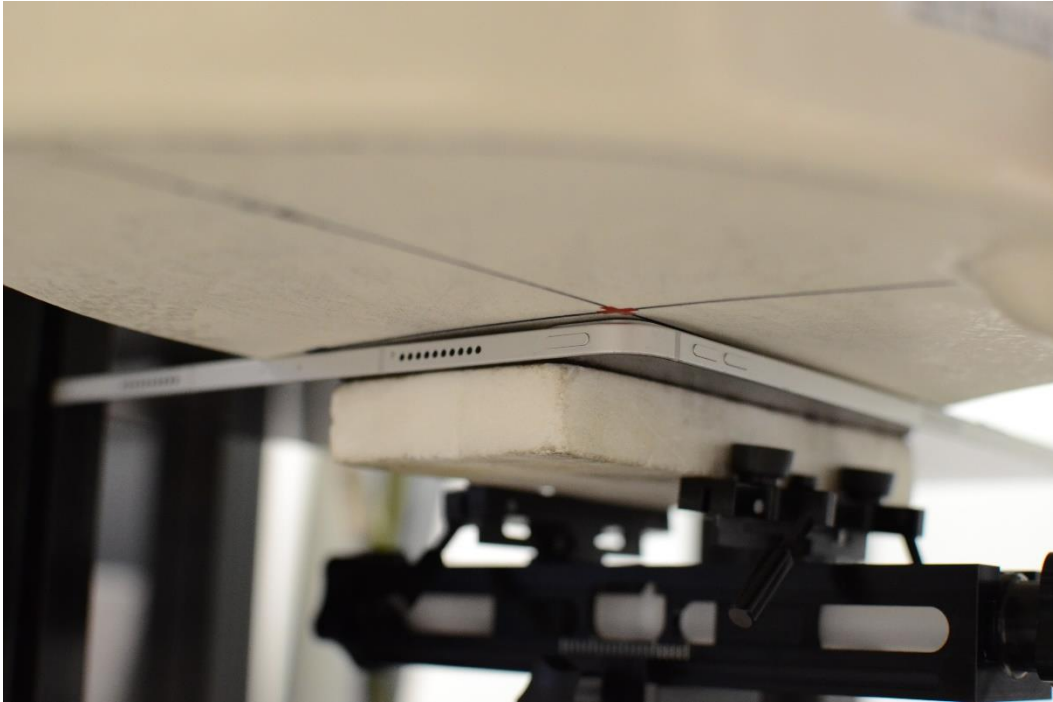


**Body SAR Test Setup Photo 1: Back Side at 0.0 cm – Ant 1**

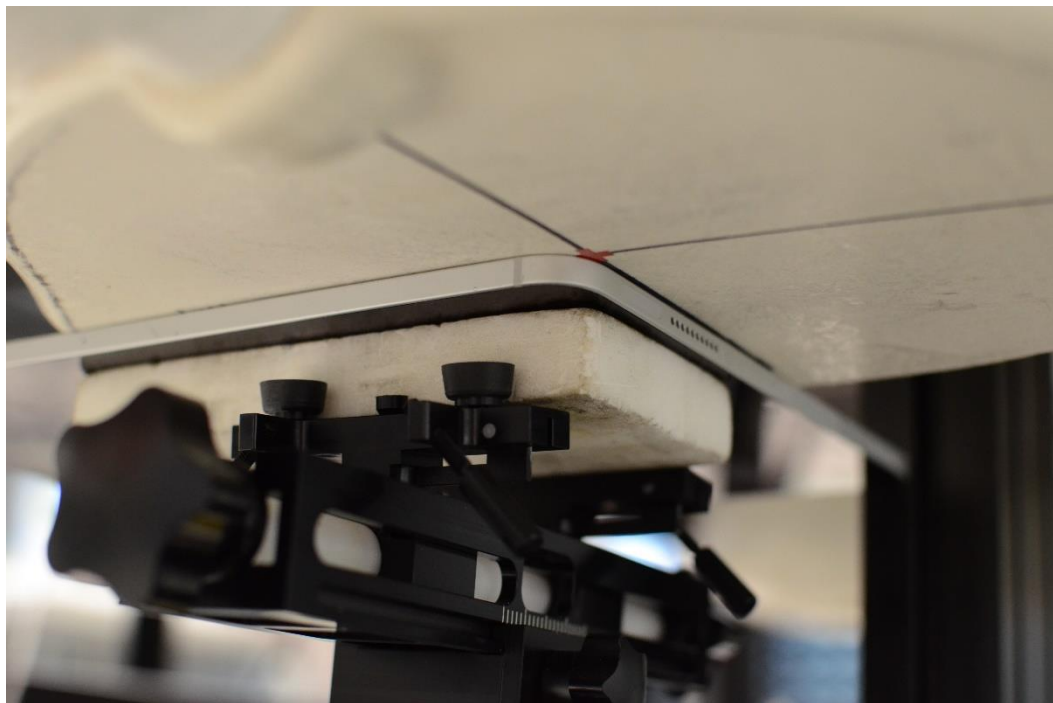


**Body SAR Test Setup Photo 2: Back Side at 0.0 cm – Ant 2a**

<b>FCC ID:</b> BCGA2764	<b>SAR EVALUATION REPORT</b>	<b>Approved by:</b> Quality Manager
<b>DUT Type:</b> Tablet Device		APPENDIX E: Page 3 of 7

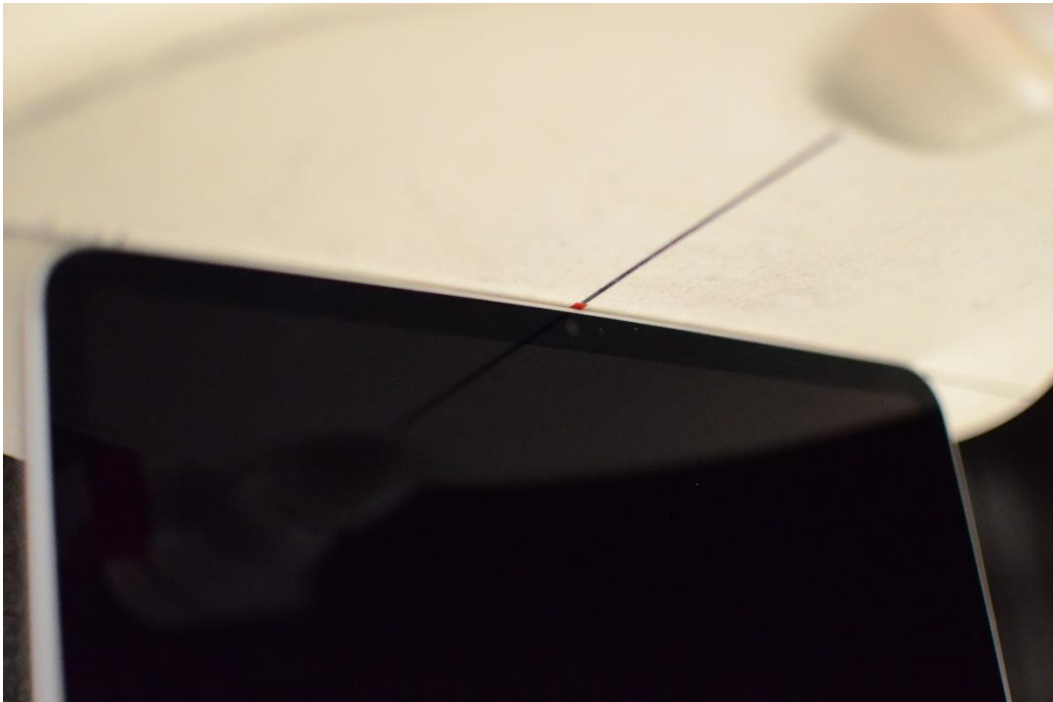


**Body SAR Test Setup Photo 3: Back Side at 0.0 cm – Ant 3**

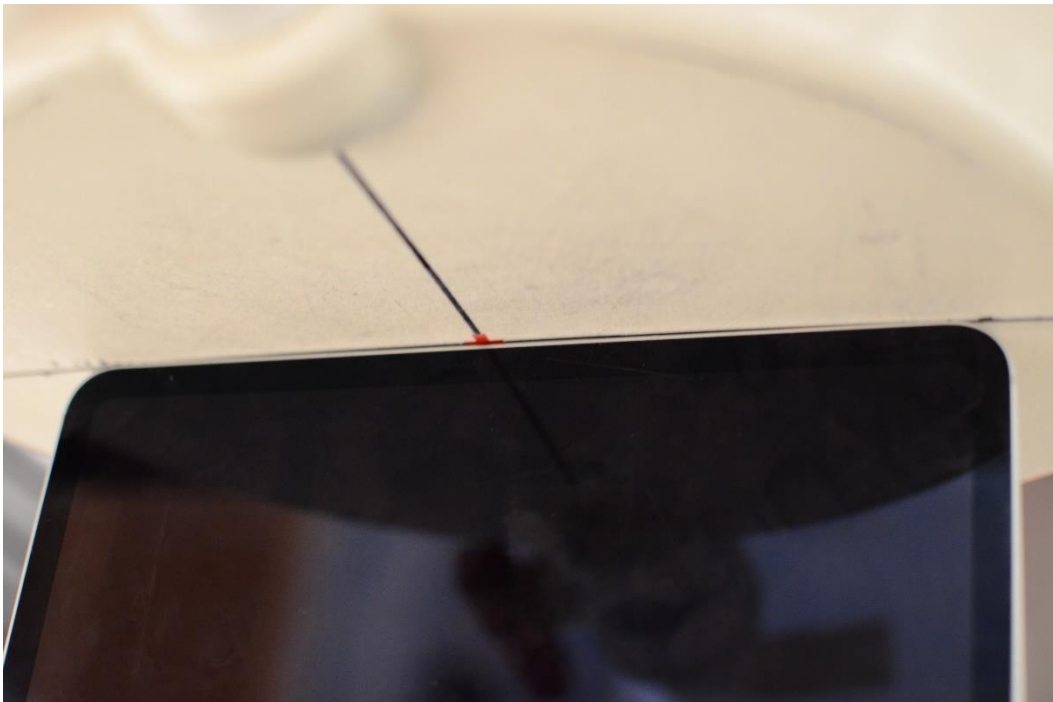


**Body SAR Test Setup Photo 4: Back Side at 0.0 cm – Ant 4b**

<b>FCC ID:</b> BCGA2764	<b>SAR EVALUATION REPORT</b>	<b>Approved by:</b> Quality Manager
<b>DUT Type:</b> Tablet Device		APPENDIX E: Page 4 of 7

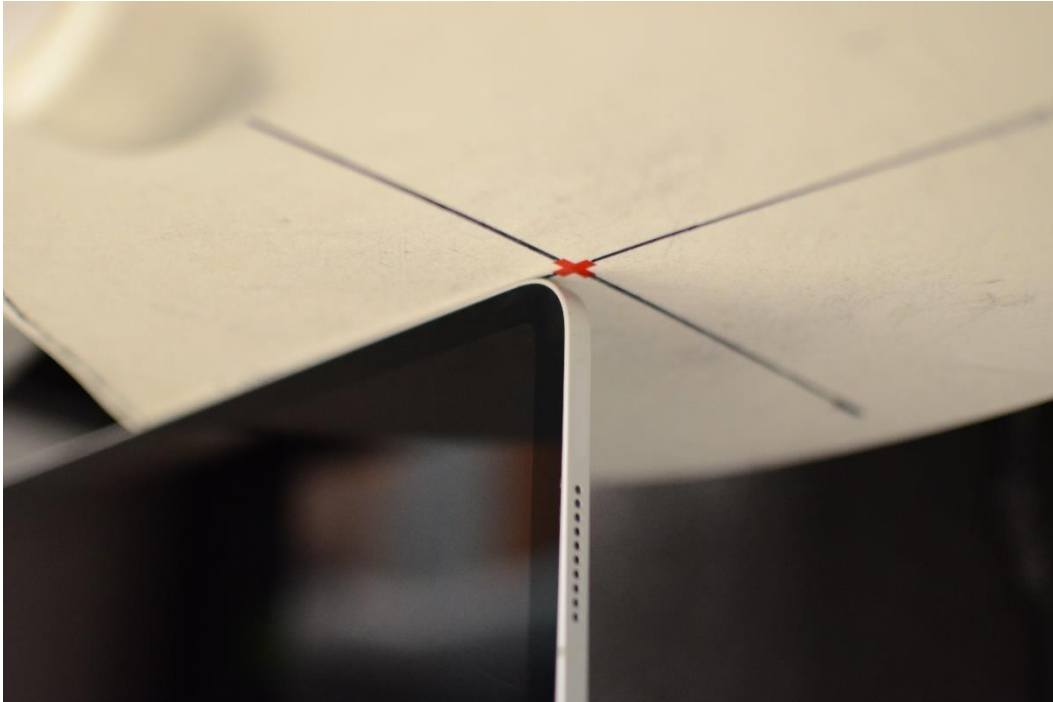


**Body SAR Test Setup Photo 5: Top Edge at 0.0 cm**

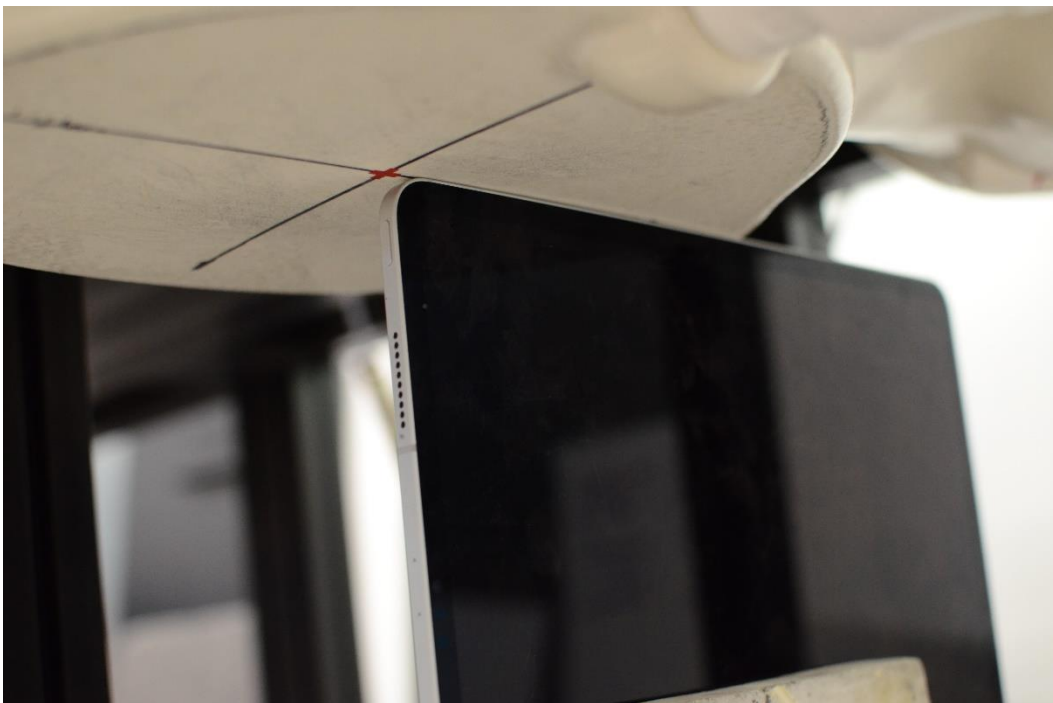


**Body SAR Test Setup Photo 6: Bottom Edge at 0.0 cm**

<b>FCC ID:</b> BCGA2764	<b>SAR EVALUATION REPORT</b>	<b>Approved by:</b> Quality Manager
<b>DUT Type:</b> Tablet Device		APPENDIX E: Page 5 of 7

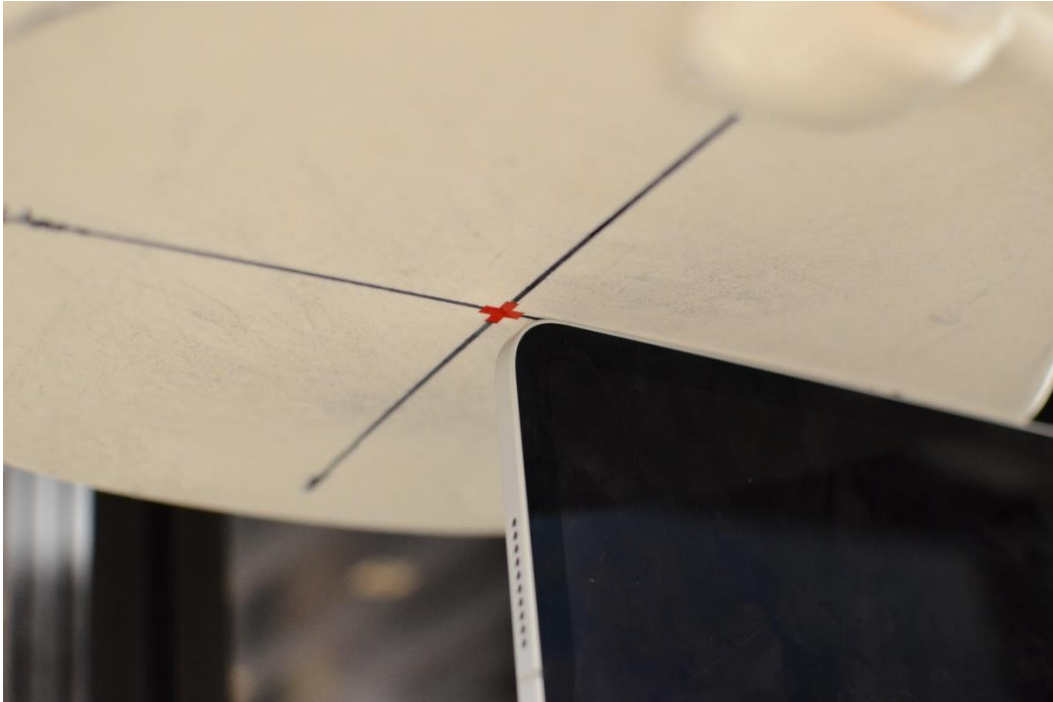


Body SAR Test Setup Photo 7: Right Edge at 0.0 cm – Ant 1/2a



Body SAR Test Setup Photo 8: Right Edge at 0.0 cm – Ant 3/4b

FCC ID: BCGA2764	SAR EVALUATION REPORT	Approved by: Quality Manager
DUT Type: Tablet Device		APPENDIX E: Page 6 of 7



**Body SAR Test Setup Photo 9: Left Edge at 0.0 cm – Ant 1/2a**



**Body SAR Test Setup Photo 10: Left Edge at 0.0 cm – Ant 3/4b**

<b>FCC ID:</b> BCGA2764	<b>SAR EVALUATION REPORT</b>	<b>Approved by:</b> Quality Manager
<b>DUT Type:</b> Tablet Device		APPENDIX E: Page 7 of 7