

APPENDIX B: SYSTEM VERIFICATION

ELEMENT

DUT: Dipole 3500.0 MHz; Type: D3500V2 - SN1055

Communication System: UID: 0, CW; Frequency: 3500.0 MHz
Medium: 3600 Head; Medium parameters used:
f = 3500.0 MHz; cond = 2.89 S/m; perm = 36.5; density = 1000 kg/m³
Phantom Section: Flat; Space: 10 mm

Test Date: 07/17/2022; Ambient Temp: 19.7°C; Tissue Temp: 18.2°C

Probe: EX3DV4 - SN7416; ConvF:(6.67,6.67,6.67); Calibrated: 2022-05-18
Sensor-Surface: 1.4mm (VMS + 6p)
Electronics: DAE4 Sn701; Calibrated: 2022-05-16
Phantom: Twin-SAM V8.0; Serial: 2071
Measurement SW: DASY Module SAR V16.2.0.1425

3500 MHz System Verification at 20 dBm (100 mW)

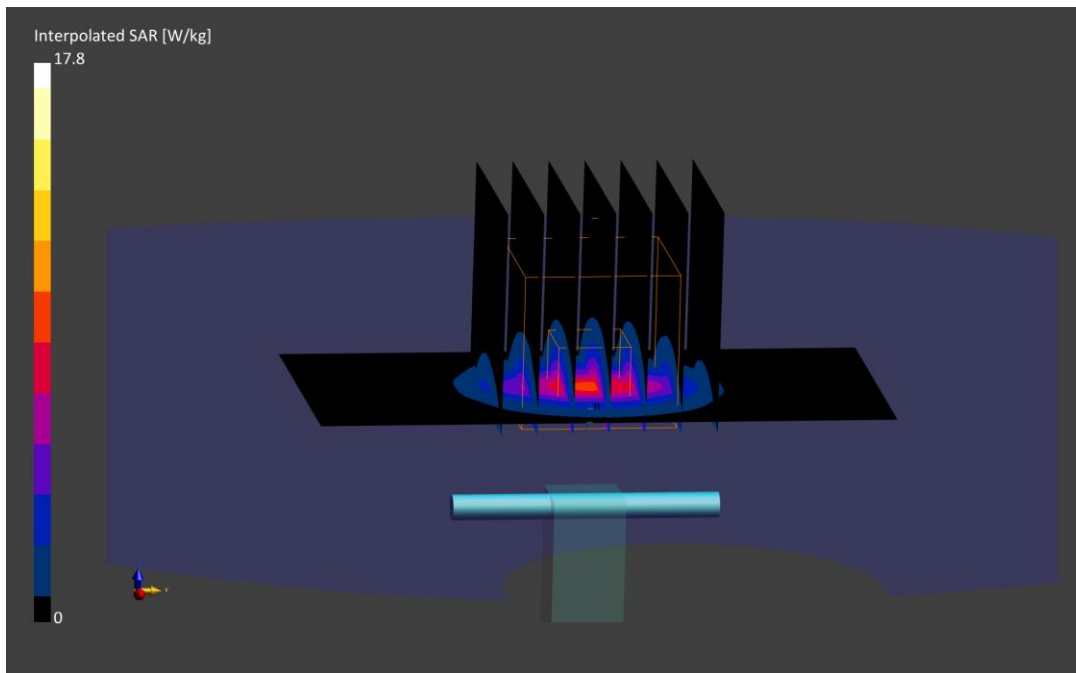
Area Scan (40.0 x 80.0): Measurement grid: dx=10.0 mm, dy=10.0 mm

Zoom Scan (28.0 x 28.0 x 28.0): Measurement grid: dx=5.0 mm, dy=5.0 mm, dz=1.4 mm; Graded Ratio: 1.5

Peak SAR (extrapolated) = 17.8 W/kg

SAR(1 g) = 6.83 W/kg; SAR(10 g) = 2.59 W/kg

Deviation (1 g) = 0.74%;



ELEMENT

DUT: Dipole 3700.0 MHz; Type: D3700V2 - SN1002

Communication System: UID: 0, CW; Frequency: 3700.0 MHz
Medium: 3600 Head; Medium parameters used:
f = 3700.0 MHz; cond = 3.05 S/m; perm = 36.2; density = 1000 kg/m³
Phantom Section: Flat; Space: 10 mm

Test Date: 07/17/2022; Ambient Temp: 19.7°C; Tissue Temp: 18.2°C

Probe: EX3DV4 - SN7416; ConvF:(6.43,6.43,6.43); Calibrated: 2022-05-18
Sensor-Surface: 1.4mm (VMS + 6p)
Electronics: DAE4 Sn701; Calibrated: 2022-05-16
Phantom: Twin-SAM V8.0; Serial: 2071
Measurement SW: DASY Module SAR V16.2.0.1425

3700 MHz System Verification at 20 dBm (100 mW)

Area Scan (40.0 x 80.0): Measurement grid: dx=10.0 mm, dy=10.0 mm

Zoom Scan (28.0 x 28.0 x 28.0): Measurement grid: dx=5.0 mm, dy=5.0 mm, dz=1.4 mm; Graded Ratio: 1.5

Peak SAR (extrapolated) = 19.8 W/kg

SAR(1 g) = 7.16 W/kg; SAR(10 g) = 2.63 W/kg

Deviation (1 g) = 4.07%

