

# APPENDIX G: WIFI TIME-AVERAGED SAR VERIFICATION

FCC ID: BCGA2436	<b>SAR EVALUATION REPORT</b>	<b>Approved by:</b> Technical Manager
DUT Type: Tablet Device		APPENDIX G Page 1 of 5

## 1.1 WIFI Time-Averaged SAR Verification Summary

This device supports the manufacturer’s time-averaged SAR (TAS) mechanism for WLAN operations. The output power is controlled in real-time so that the power averaged over any 30 second window does not exceed the level tested for SAR in this report. The time-averaged SAR algorithm tracks the energy contribution relative to the available energy budget for each transmitter, defined as the “utilization ratio.” Once the utilization ratios for each of the individual WLAN transmitters are calculated, they are summed to derive the overall WLAN system power utilization ratio. This metric is used by the WLAN chipset to manage power levels over time and ensure that SAR limits are never exceeded.

Per FCC Guidance, the following test scenarios were defined to validate the TAS mechanism. The specific scenarios are constructed to validate the operation of the algorithm in all operational states, including transitions between states/antennas:

- Change in channel/band
- Change in antenna (includes connection drop scenario)

Predefined transmit profiles for each test scenario are provided by the manufacturer’s test automation software to control the operation of the DUT while synchronized operational data was recorded from internal firmware and external power monitors. The data was plotted over time relative to the utilization limit to demonstrate that the maximum time-averaged power is never exceeded. “Reported” values were output and captured directly from DUT firmware, while “Measured” results were obtained from external power metering. The uncertainty budget applied to the WLAN power control functions for this device is 1.5 dB. In all test cases, WLAN radios were configured to operate at 100% duty cycle.

The DUT supports time-averaged SAR (TAS) technology for the WLAN transmitters. This TAS implementation support per-packet tracking enhancement that accounts for per packet power variation. The actual output power is measured from the TSSI ADC reading and is reported in the form of Tx duration weighted for Pmax. Power levels in different bands with different operating states and power limits are not directly comparable so the TAS algorithm instead tracks the ratio of energy contribution relative to the available energy budget for each transmitter.

During the transitions, when utilization is over 50%, please refer to Part 1 SAR Report S/N 1C2205090027-15.BCG (Rev 1) Section 10.3 and 10.4 for antennas that are considered spatially separated.

For WIFI 6 GHz, the RF Exposure was evaluated at the maximum output power, therefore no evaluations for time-averaging were required.

**Table 1**  
**WIFI Time-Averaged SAR Verification Summary**

Mode	Antenna	Channel	Plim (dBm)	Plim (mW)
802.11b, 22 MHz Bandwidth	WF8	6	17	50.1
802.11b, 22 MHz Bandwidth	WF7	6	15.5	35.5
802.11a, 20 MHz Bandwidth	WF5T	149	16	39.8
802.11a, 20 MHz Bandwidth	WF5B	149	16.5	44.7

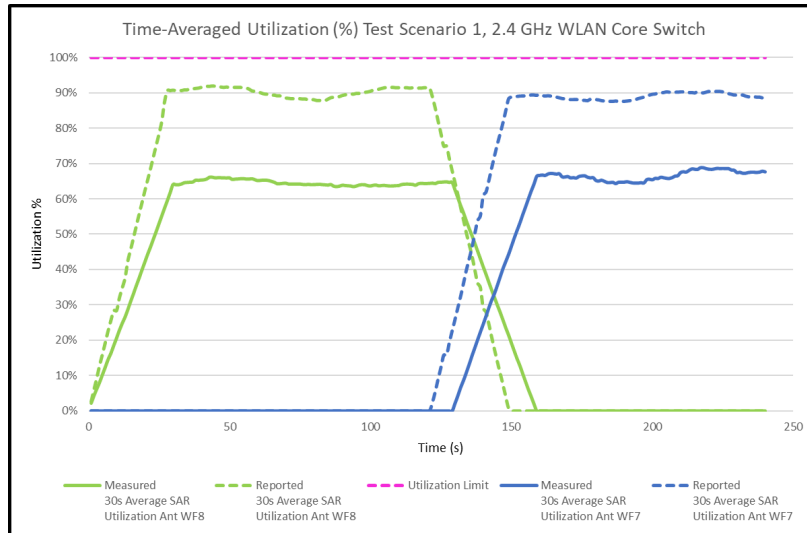
Plim is the maximum time-averaged output power evaluated for SAR compliance

FCC ID: BCGA2436	<b>SAR EVALUATION REPORT</b>	Approved by: Technical Manager
DUT Type: Tablet Device		APPENDIX G Page 2 of 5

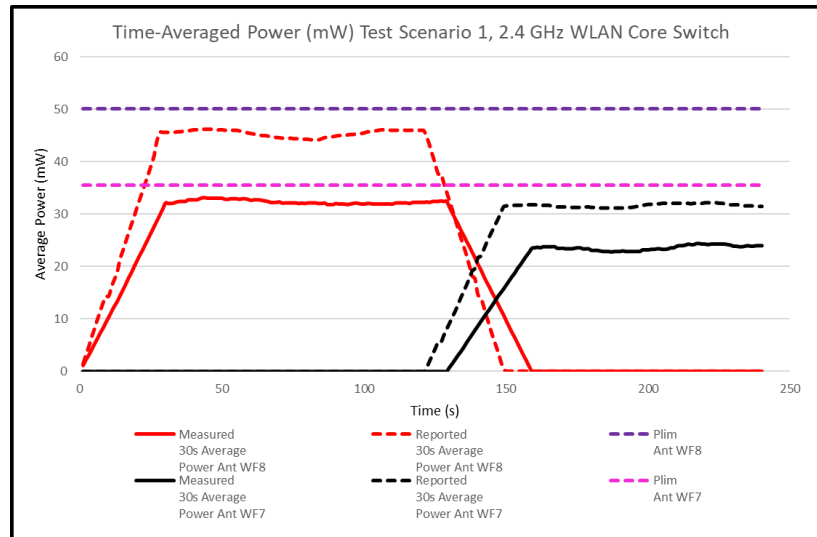
## 1.2 Verification Summary

### Scenario 1: Change in Antenna

For this test, the effect on the time-averaging algorithm from a change in the active transmit antenna was evaluated. Figures G-1 and G-2 show a switch of 2.4 GHz transmissions from Antenna WF8 to Antenna WF7 at Time = 120 s, while Figures G-3 and G-4 show a comparable transition for Antenna WF5T to Antenna WF5B 5 GHz transmissions. In both cases the test automation is controlling the WLAN radios to operate at 100% duty cycle. In both cases the utilization ratio never exceeds 100% and the average transmit power never exceeds the Plim of each respective antenna.

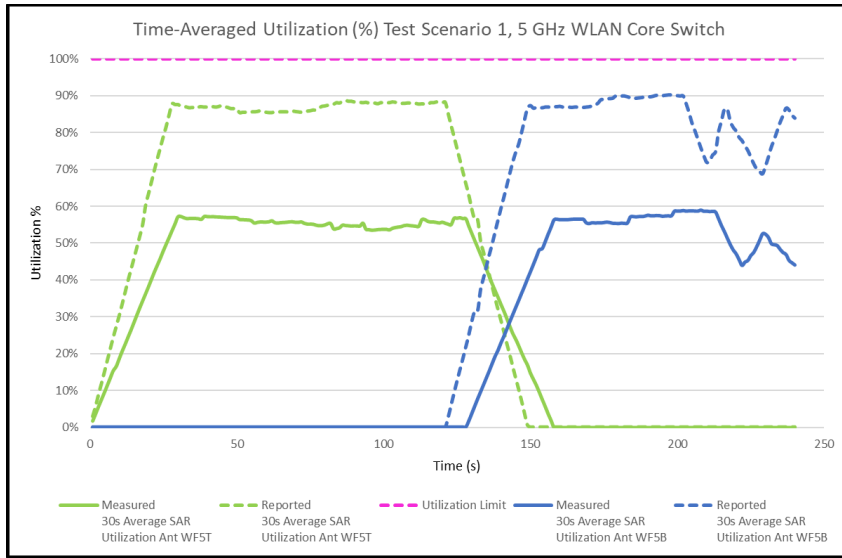


**Figure G-1**  
**30s Average SAR Utilization vs. Time, 2.4 GHz**

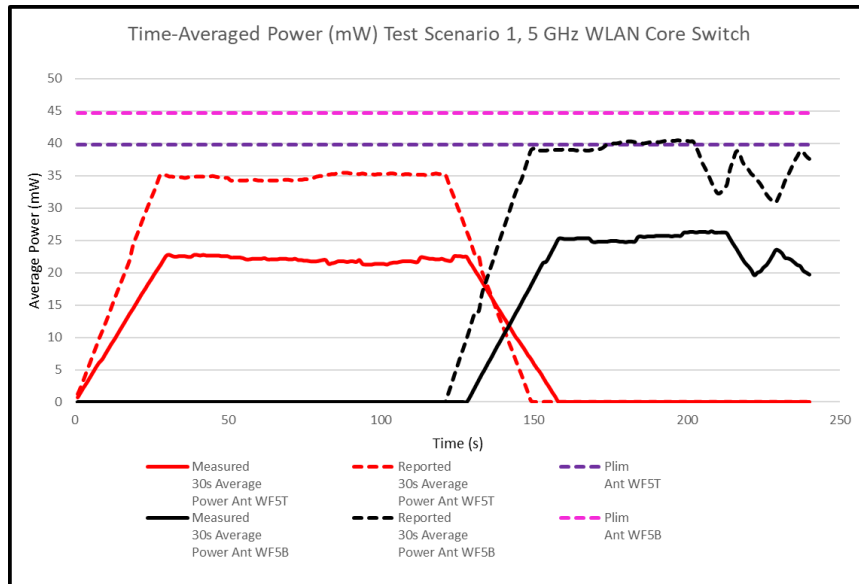


**Figure G-2**  
**30s Average Power vs. Time, 2.4 GHz**

FCC ID: BCGA2436	<b>SAR EVALUATION REPORT</b>	Approved by: Technical Manager
DUT Type: Tablet Device		APPENDIX G Page 3 of 5



**Figure G-3**  
**30s Average SAR Utilization vs. Time, 5 GHz**



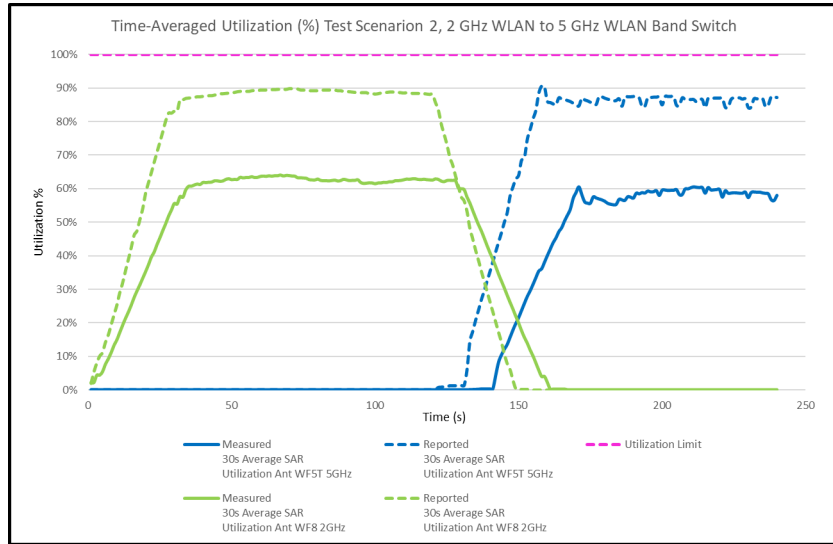
**Figure G-4**  
**30s Average Power vs. Time, 5 GHz**

<p>FCC ID: BCGA2436</p>	<p><b>SAR EVALUATION REPORT</b></p>	<p><b>Approved by:</b>          Technical Manager</p>
<p><b>DUT Type:</b>          Tablet Device</p>		<p>APPENDIX G          Page 4 of 5</p>

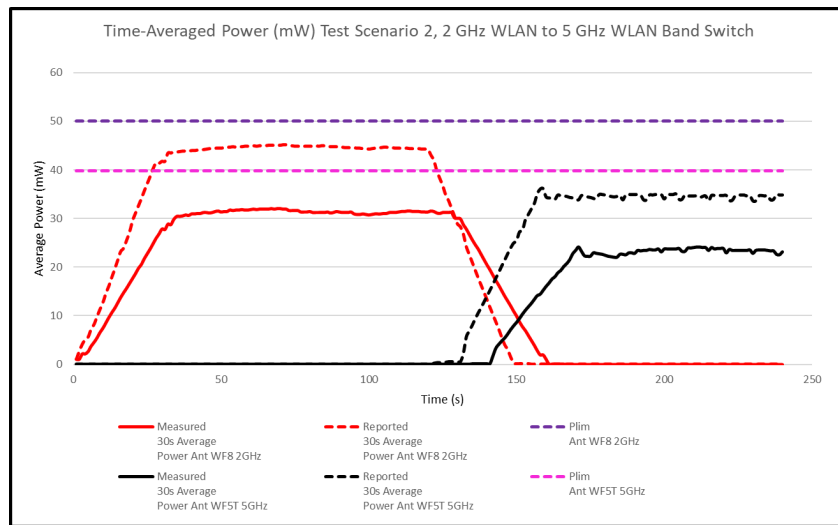
## Scenario 2: Change in Channel/Band Test Case

This test demonstrates the efficacy of the time-averaged SAR algorithm while switching between 2.4 GHz and 5 GHz WLAN bands. In addition, it shows that the algorithm tracks time-averaged power and system utilization when the active transmitter is disabled and then reconnects.

The 2.4 GHz Antenna WF8 transmitter is active at 100% duty cycle until Time = 120 s. When 2.4 GHz transmissions cease, the 5 GHz Antenna WF5T transmitter is activated and begins to negotiate a new connection. The connection is established and the increase in average transmit power and utilization can clearly be seen. In this case the utilization ratio never exceeds 100% and the average transmit power never exceeds the Plim of each respective antenna.



**Figure G-5**  
30s Average Utilization vs. Time during Band Switch



**Figure G-6**  
30s Average Power vs. Time during Band Switch

FCC ID: BCGA2436	<b>SAR EVALUATION REPORT</b>	Approved by: Technical Manager
DUT Type: Tablet Device		APPENDIX G Page 5 of 5