

APPENDIX A: TEST PLOTS

ELEMENT

DUT: BCGA2435; Type: Tablet Device; Serial: NVH3X4

Communication System: UID:10755 - AAC, WLAN; MAIA: Y; Frequency: 6505.0 MHz
Medium: 6000 Head; Medium parameters used:
f = 6505.0 MHz; cond = 6.24 S/m; perm = 35.0; density = 1000 kg/m³
Phantom Section: Flat; Space: 0.00 mm

Test Date: 07/01/2022; Ambient Temp: 22.7°C; Tissue Temp: 20.4°C

Probe: EX3DV4 - SN7421; ConvF:(5.3,5.3,5.3); Calibrated: 2022-03-22
Sensor-Surface: 1.4mm (VMS + 6p)
Electronics: DAE4 Sn604; Calibrated: 2022-03-22
Phantom: Twin-SAM V4.0; Serial: 1275
Measurement SW: DASY Module SAR V16.0.2.136

**Mode: IEEE 802.11ax, U-NII-8, Antenna 4a, Variant 1, 160 MHz Bandwidth,
Body SAR, Back Side, Ch. 111, 68.1 Mbps**

Area Scan (221.0 x 289.0): Measurement grid: dx=8.5 mm, dy=8.5 mm

Zoom Scan (22.0 x 22.0 x 22.0): Measurement grid: dx=3.4 mm, dy=3.4 mm, dz=1.4 mm; Graded
Ratio: 1.4

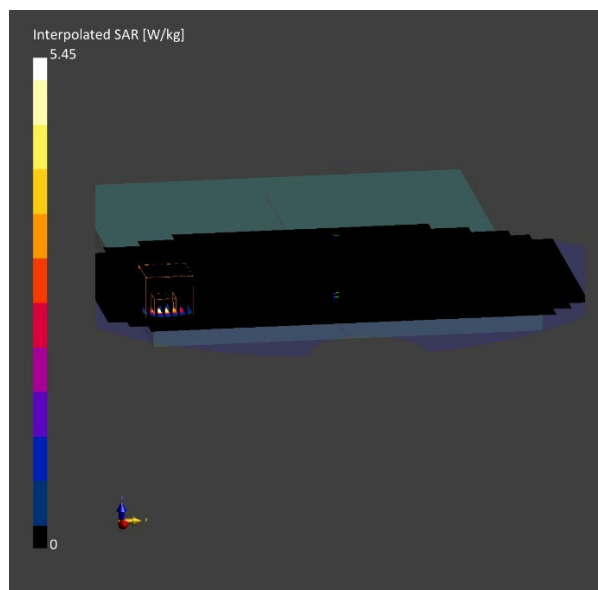
Reference Value = 1.04 W/kg; Power Drift = -0.04 dB

Peak SAR (extrapolated) = 5.45 W/kg

SAR(1 g) = 0.850 W/kg; SAR(10 g) = 0.168 W/kg; APD(4 cm²) = 4.05 W/m²

Smallest distance from peaks to all points 3 dB below is 3.7 mm

Ratio of SAR at M2 to SAR at M1 = 45.9 %



ELEMENT

Date: 08/26/2022

Antenna 5B; Variant 2; Channel 207; 802.11ax

Device Under Test Properties

| DUT | Serial Number | DUT Type |
|----------|---------------|---------------|
| BCGA2435 | 00NCF0 | Tablet Device |

Exposure Conditions

| Phantom Section | Position | Test Distance [mm] | Channel | Group, UID | Frequency [MHz] |
|-----------------|----------|--------------------|---------|-------------|-----------------|
| 5G | RIGHT | 2.00 | 207 | WLAN, 10755 | 6985.0 |

Hardware Setup

| Probe, Calibration Date | DAE, Calibration Date |
|------------------------------|-------------------------|
| EUmmWV3 - SN9364, 06/16/2022 | DAE4 SN1333, 10/20/2021 |

Software Setup

| Software | Software Version |
|----------------------|------------------|
| cDASY6 Module mmWave | 3.0.0.841 |

Scans Setup

| | |
|---------------------|-------------|
| Scan Type | 5G Scan |
| Grid Extents [mm] | 60x60 |
| Grid Steps [lambda] | 0.25 x 0.25 |
| Sensor Surface [mm] | 2.0 |

Measurement Results

| | |
|---|---------|
| Scan Type | 5G Scan |
| Avg. Area [cm ²] | 4.00 |
| pS _{tot} avg [W/m ²] | 3.88 |
| pS _n avg [W/m ²] | 3.26 |
| E _{peak} [V/m] | 61.7 |
| Power Drift [dB] | 0.08 |

