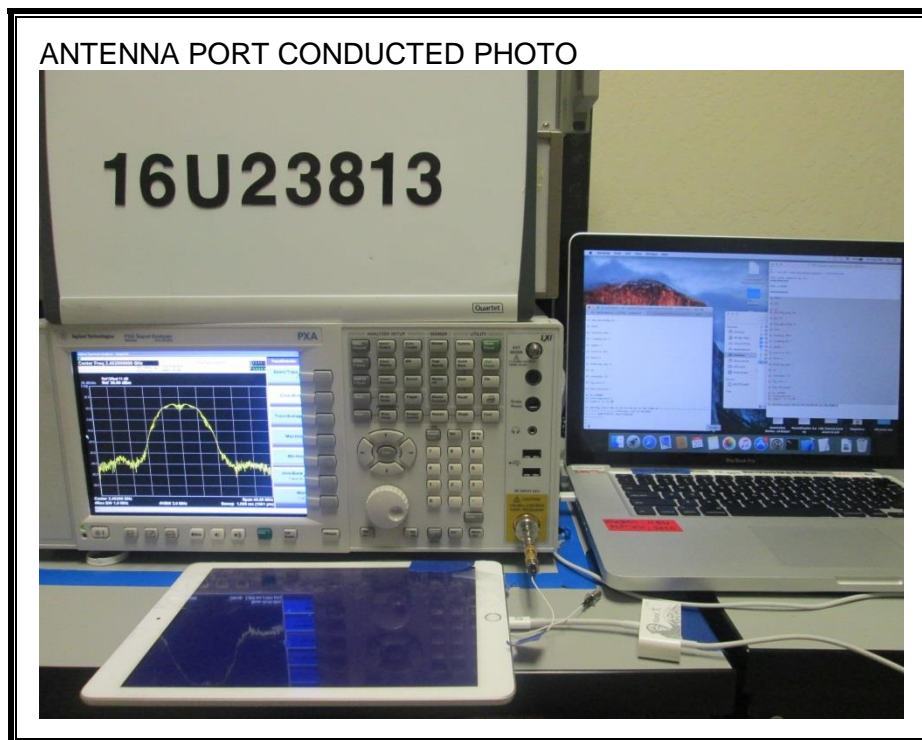


12. SETUP PHOTOS

ANTENNA PORT CONDUCTED RF MEASUREMENT SETUP

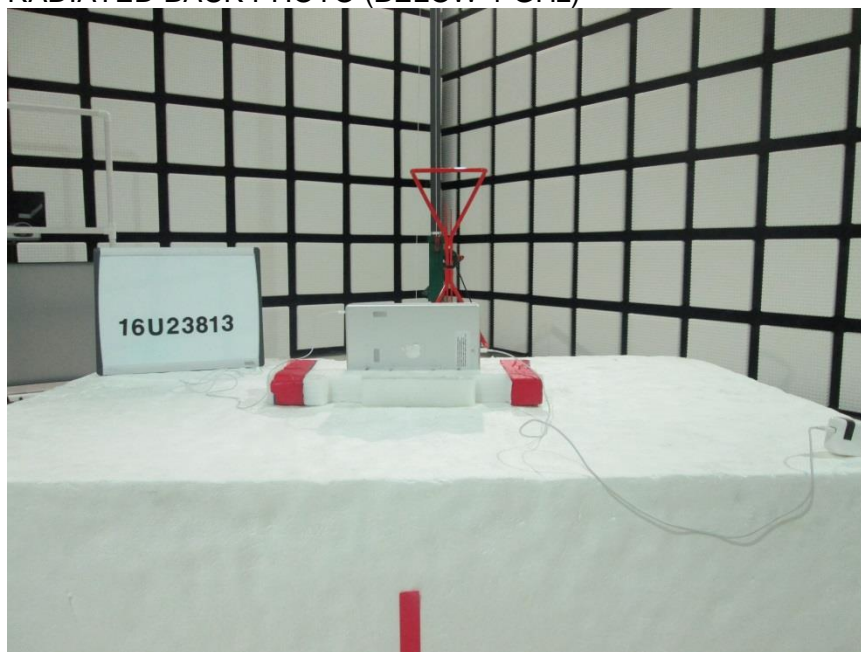


RADIATED RF MEASUREMENT SETUP (BELOW 1 GHz)

RADIATED FRONT PHOTO (BELOW 1 GHz)



RADIATED BACK PHOTO (BELOW 1 GHz)

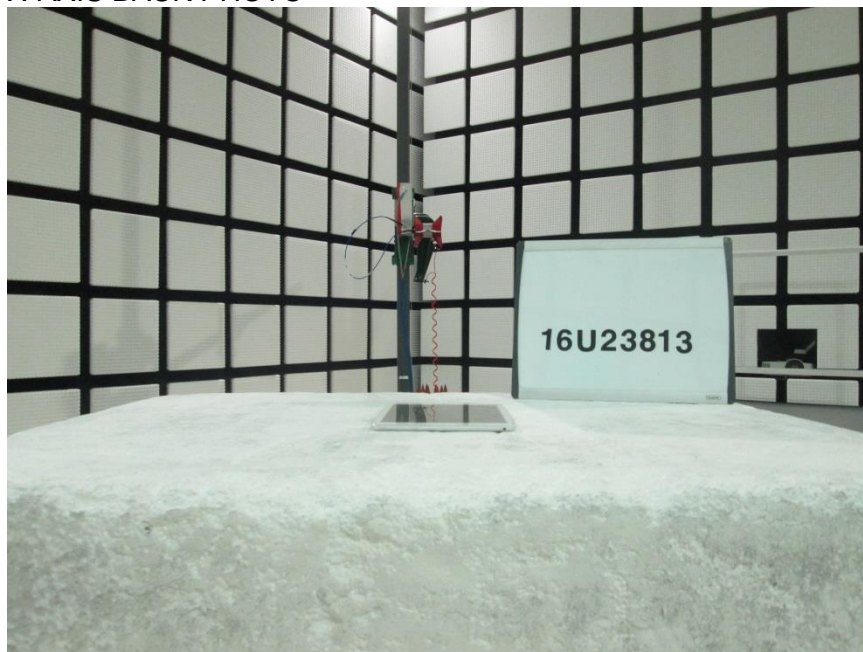


RADIATED RF MEASUREMENT SETUP FOR PORTABLE CONFIGURATION

X-AXIS FRONT PHOTO



X-AXIS BACK PHOTO



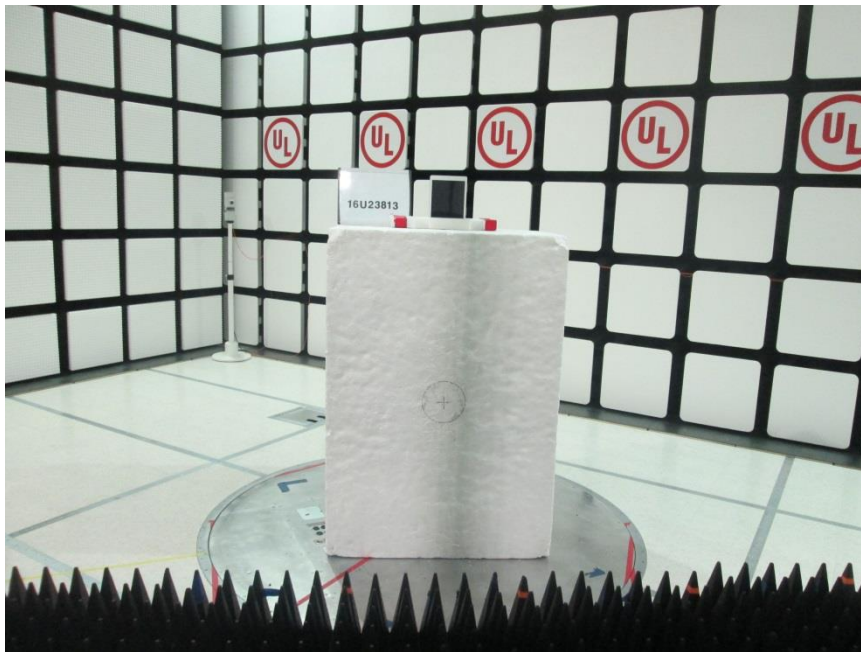
Y-AXIS FRONT PHOTO



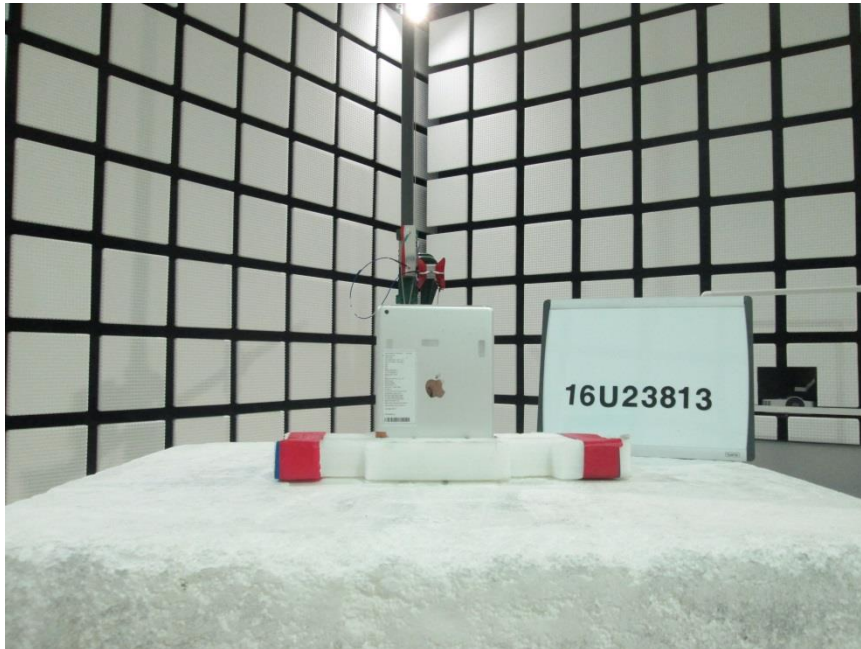
Y-AXIS BACK PHOTO



Z-AXIS FRONT PHOTO



Z-AXIS BACK PHOTO



POWERLINE CONDUCTED EMISSIONS MEASUREMENT SETUP

EUT POWERED BY AC/DC ADAPTER

LINE CONDUCTED FRONT PHOTO



LINE CONDUCTED BACK PHOTO



EUT POWERED BY HOST PC VIA USB CABLE

LINE CONDUCTED FRONT PHOTO



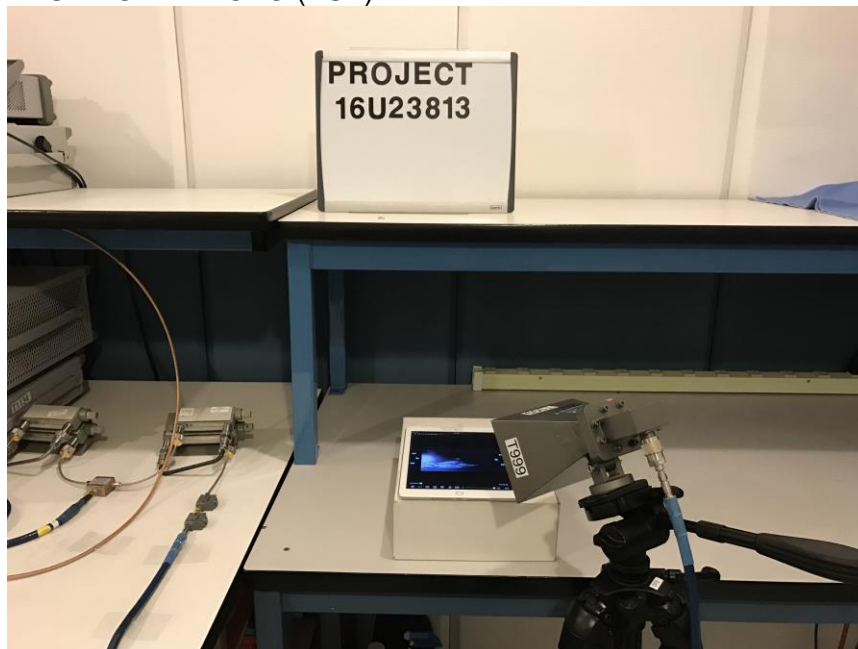
LINE CONDUCTED BACK PHOTO



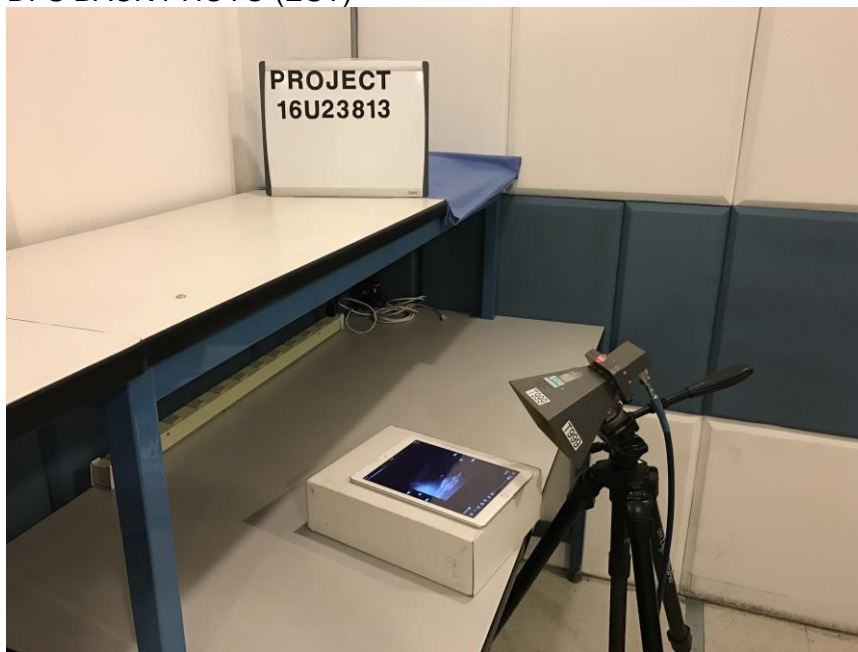
DYNAMIC FREQUENCY SELECTION MEASUREMENT SETUP

STANDARD CLIENT MODE

DFS FRONT PHOTO (EUT)



DFS BACK PHOTO (EUT)



CLIENT TO CLIENT MODE

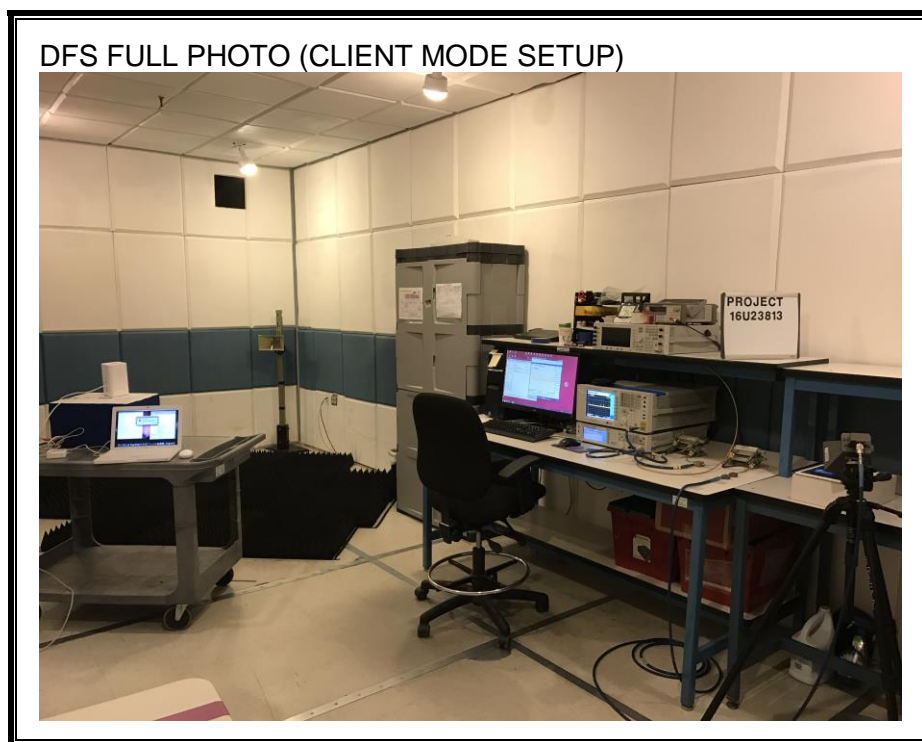
DFS FRONT PHOTO (EUT)



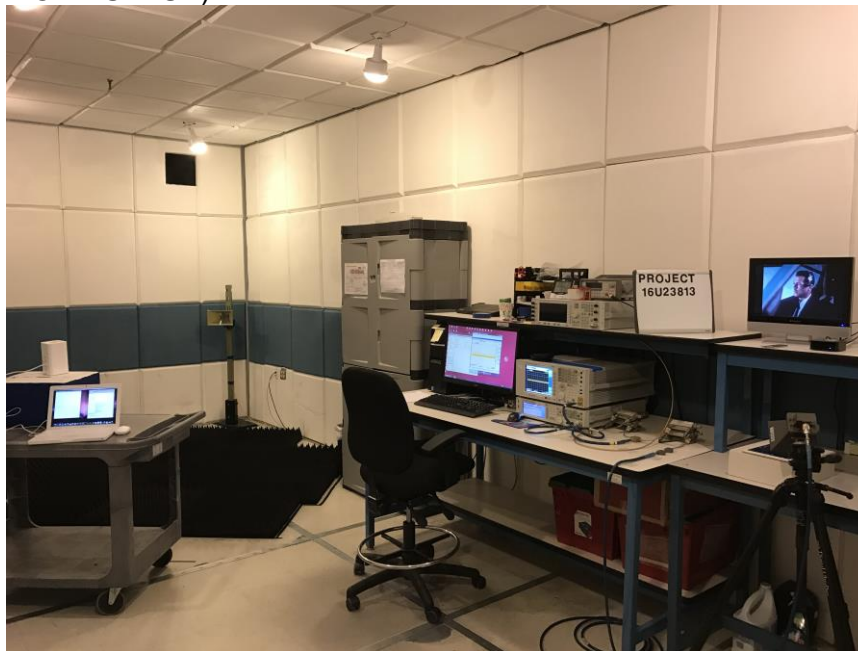
DFS BACK PHOTO (EUT)



FULL SETUP



DFS FULL PHOTO (CLIENT-TO-CLIENT COMMUNICATIONS
MODE SETUP)



END OF REPORT