

**A1708
Internal View**

Battery

Multi-touch Trackpad

Speaker structures

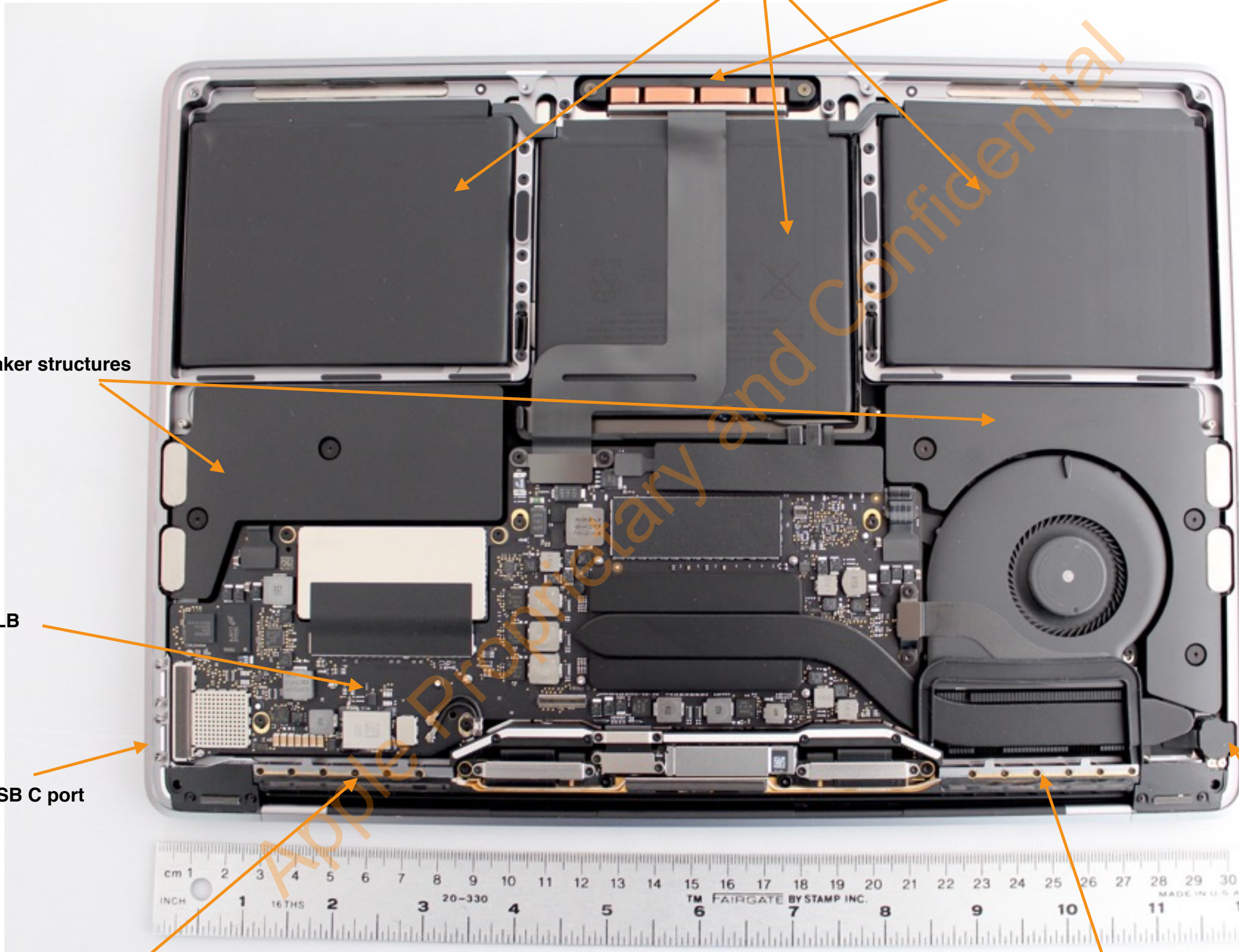
MLB

2 x USB C port

WF2/BT antenna structure

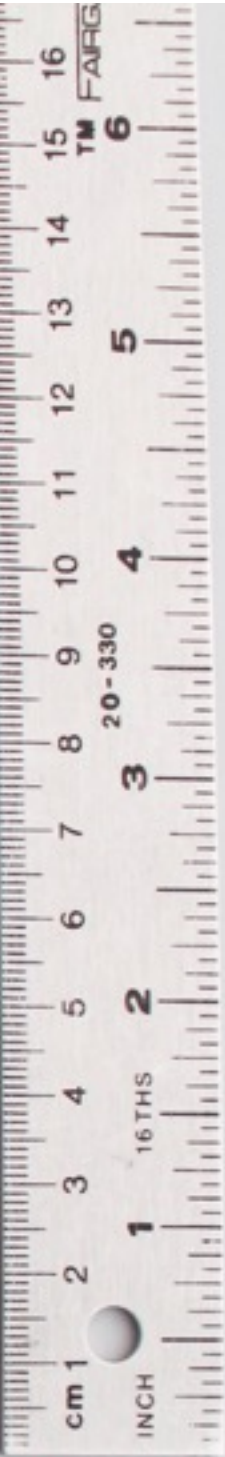
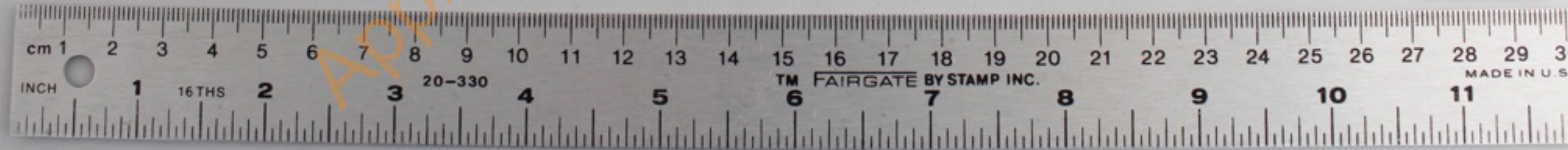
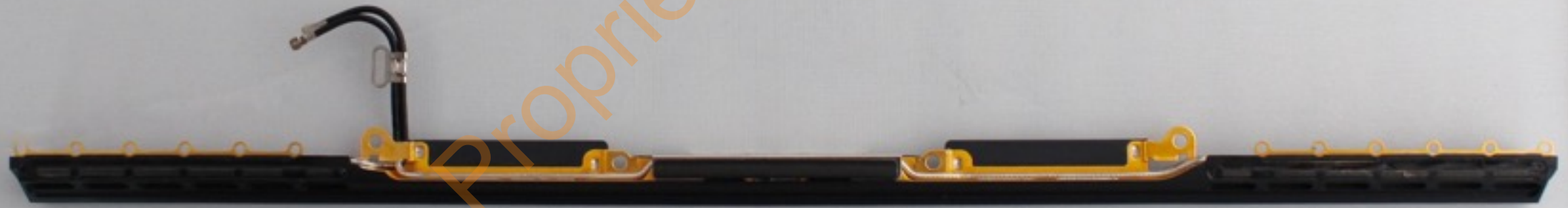
WF1 antenna structure

Headphone jack



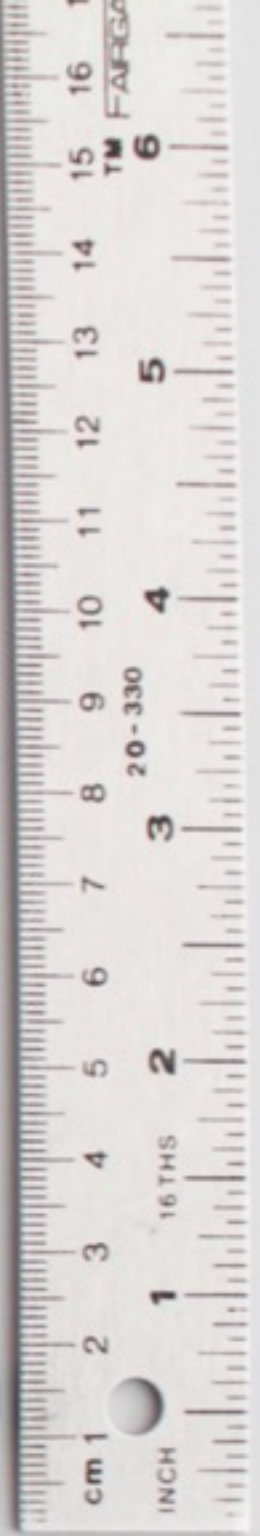
A1708

WF1 and WF2/BT antenna structure and feed- Front



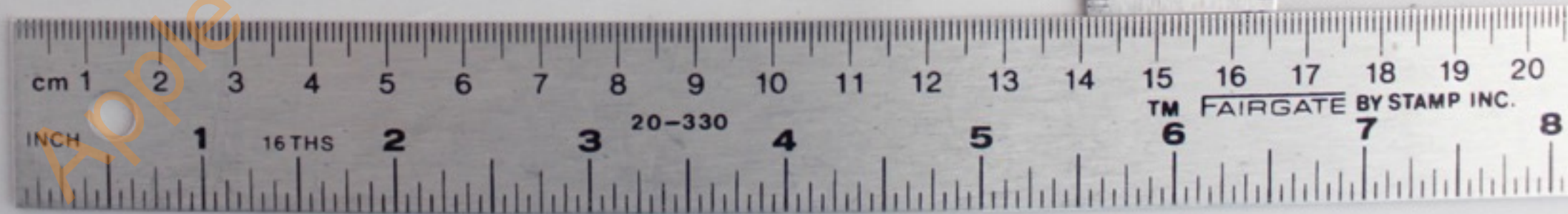
A1708

WF1 and WF2/BT antenna structure and feed- Back



A1708

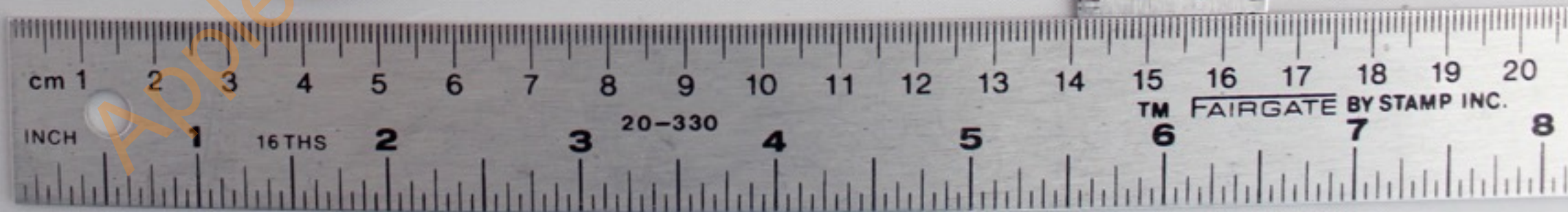
Right speaker structure- Front



Apple Proprietary and Confidential

A1708

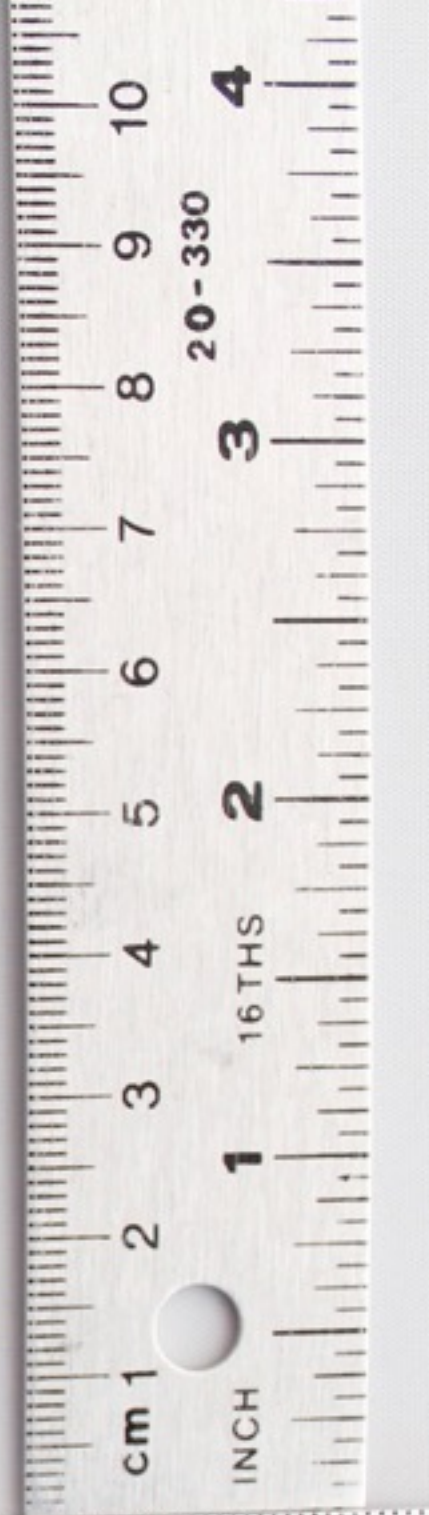
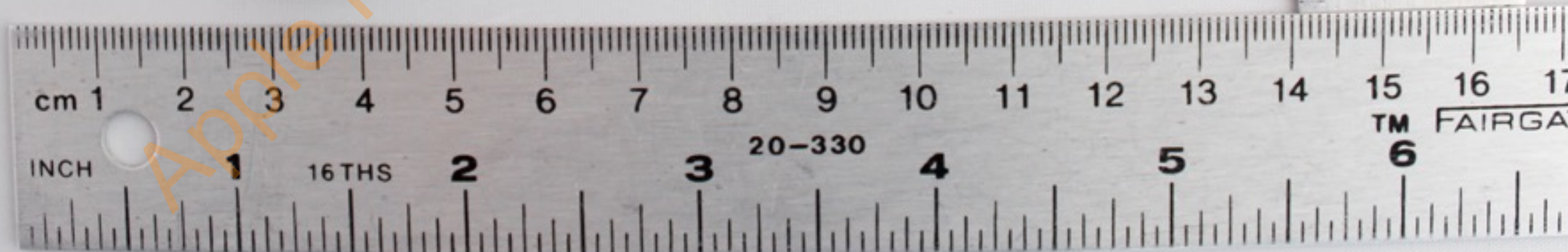
Right speaker structure- Back



Apple Proprietary and Confidential

A1708

Left speaker structure- Front



A1708

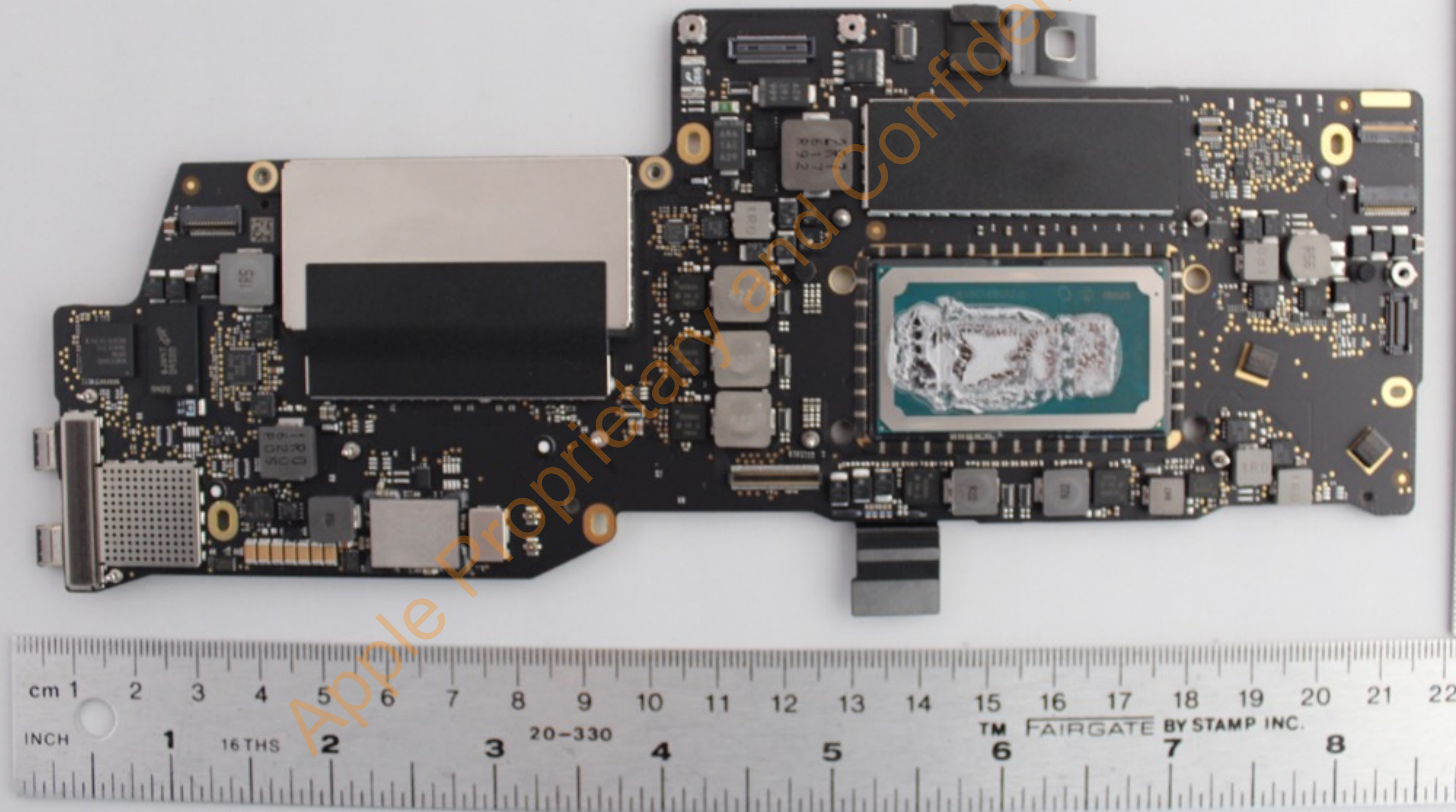
Left speaker structure- Back



Apple Proprietary and Confidential

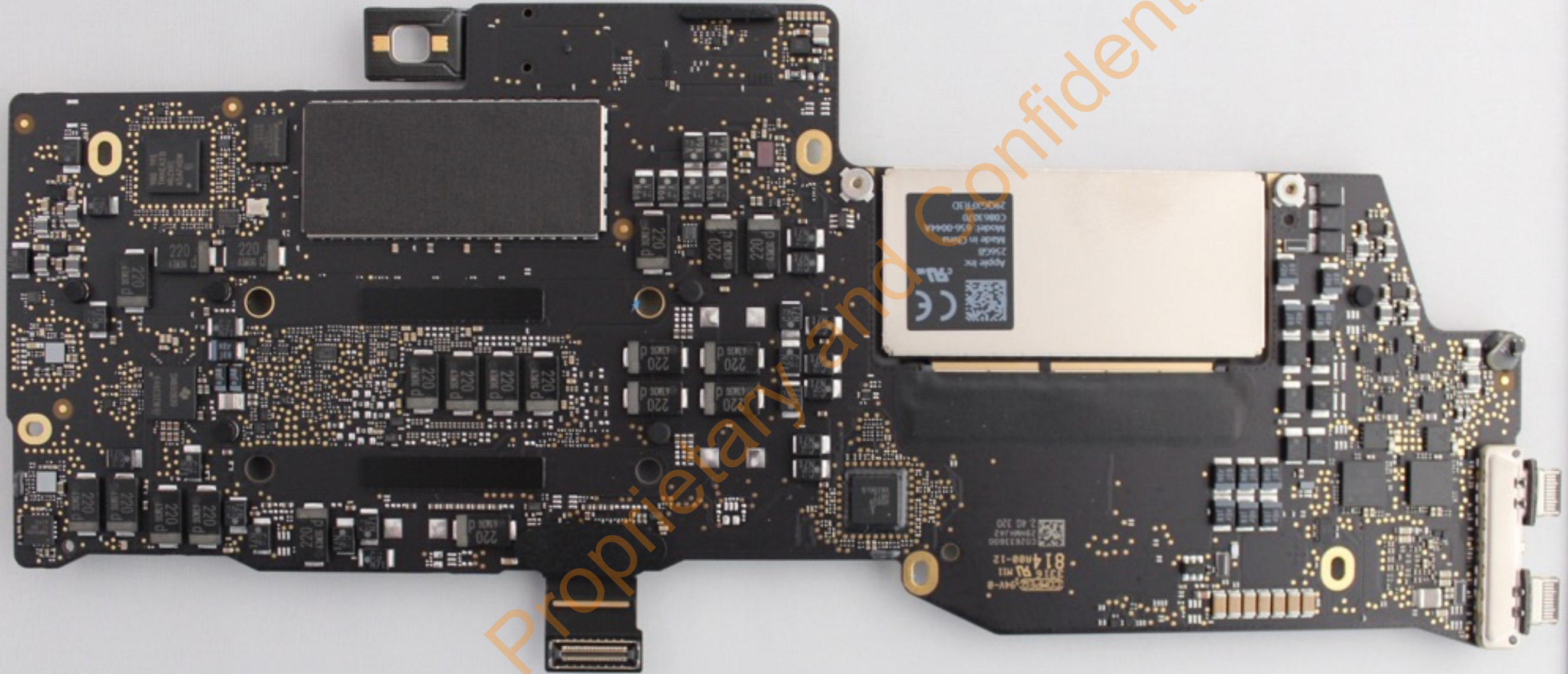
A1708

MLB with shields- Front

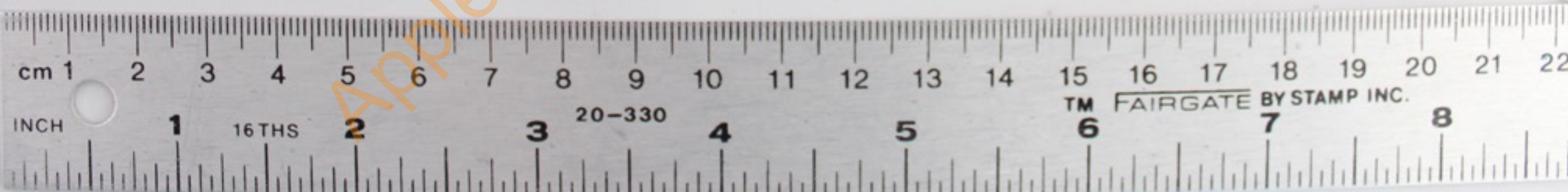


A1708

MLB with shields- Back

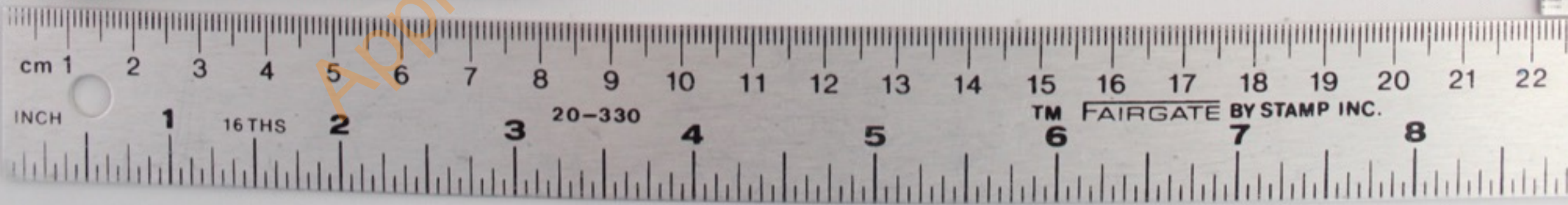
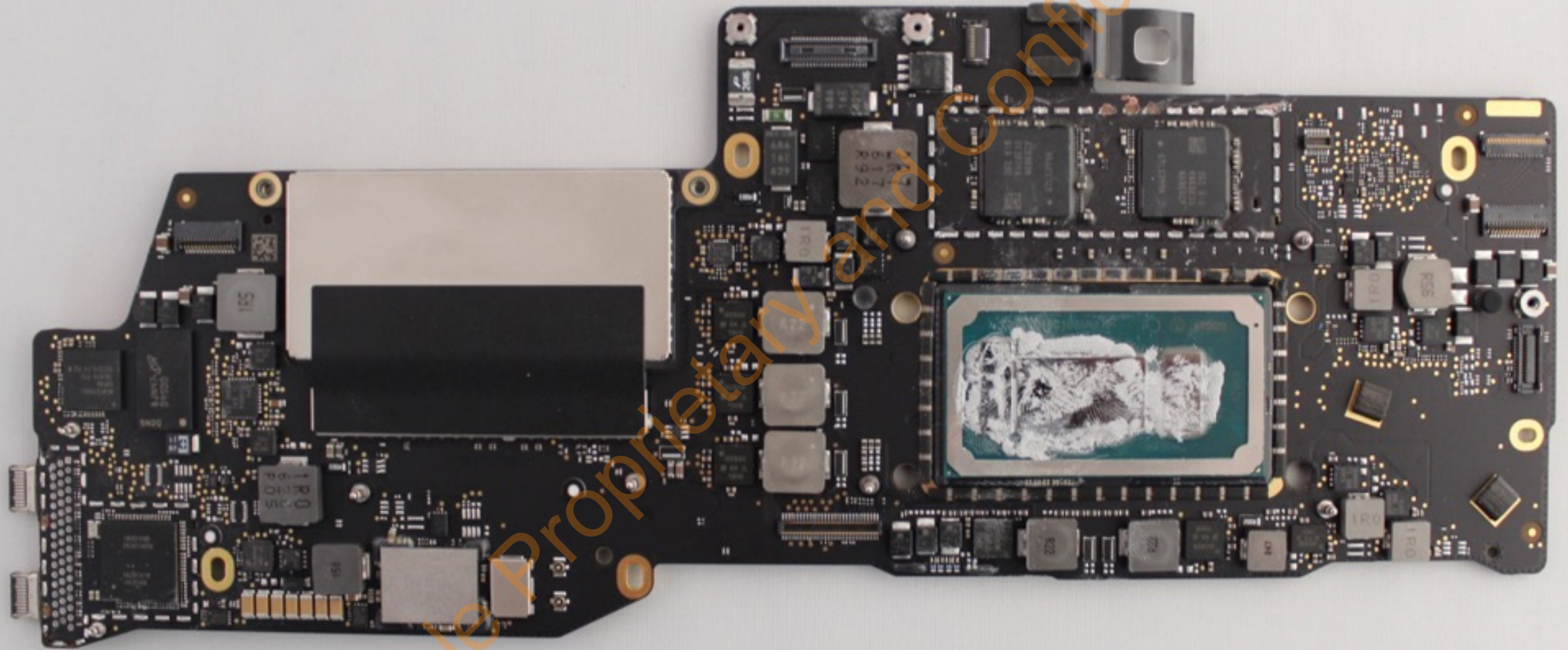


Apple Proprietary and Confidential



A1708

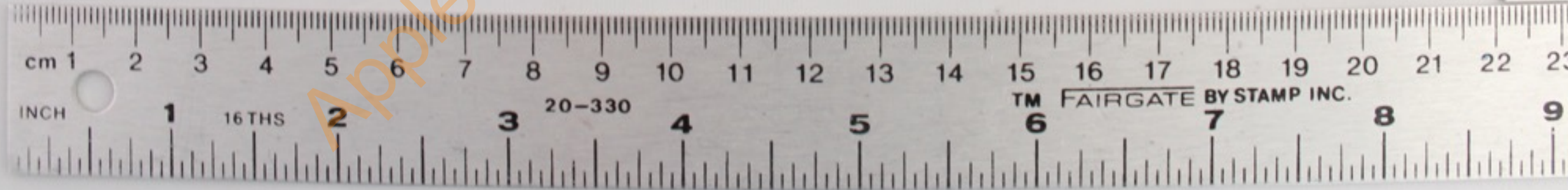
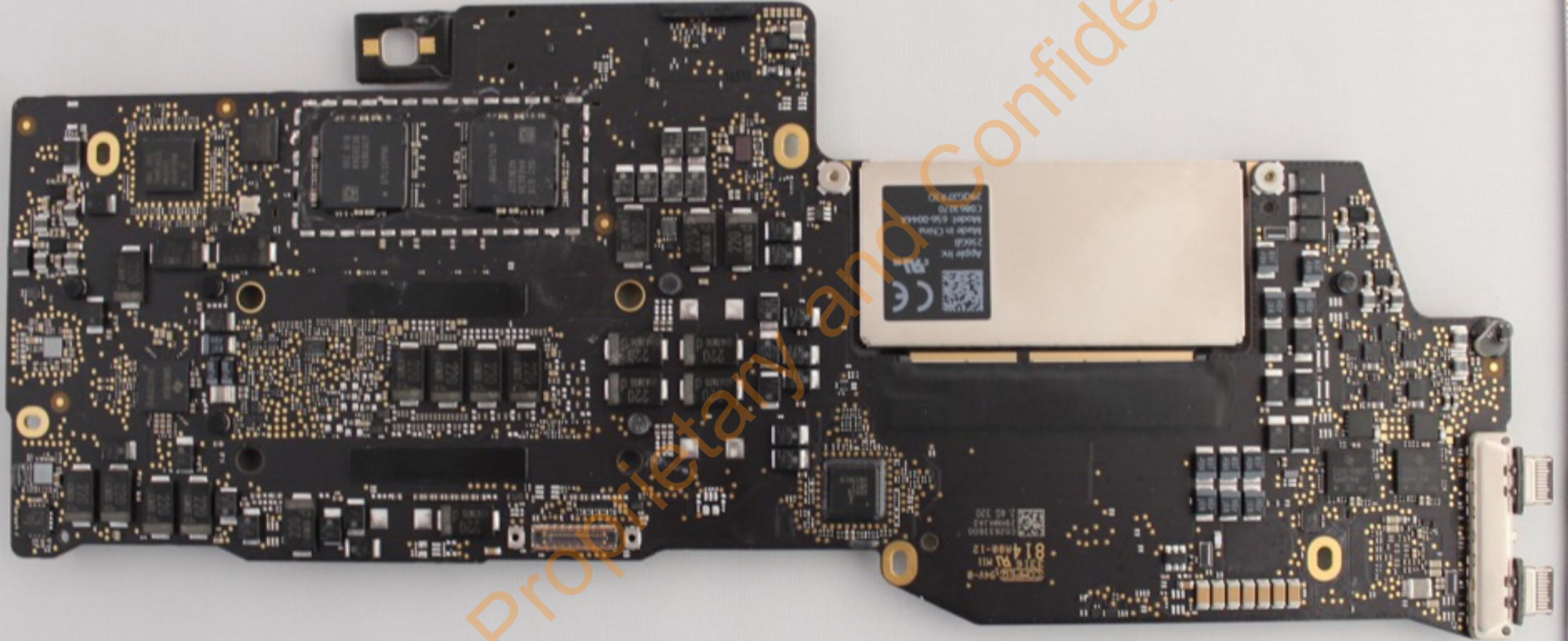
MLB without shields- Front



Apple Proprietary and Confidential

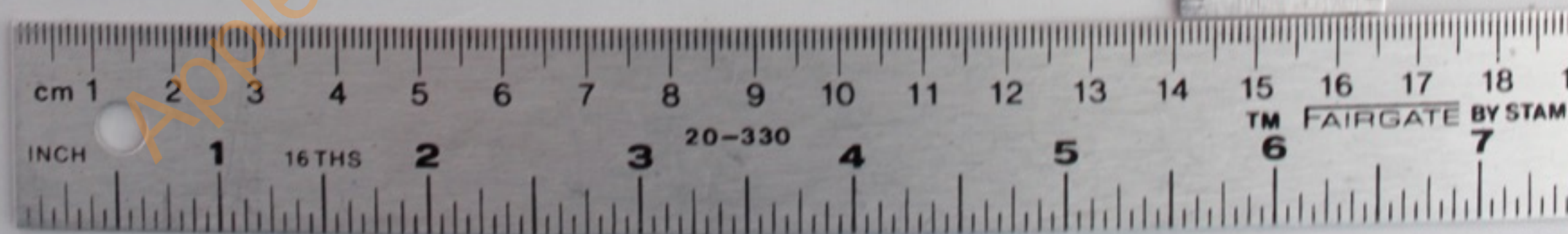
A1708

MLB without shields- Back



A1708

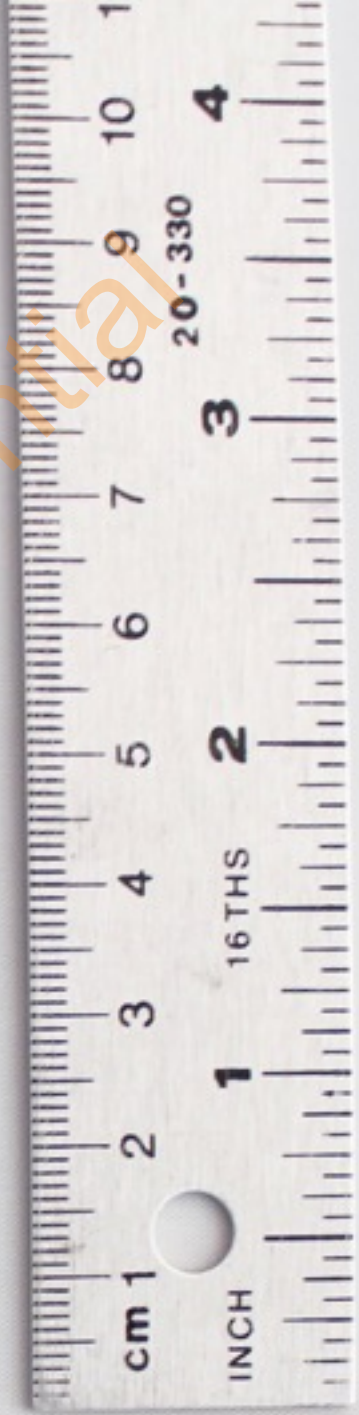
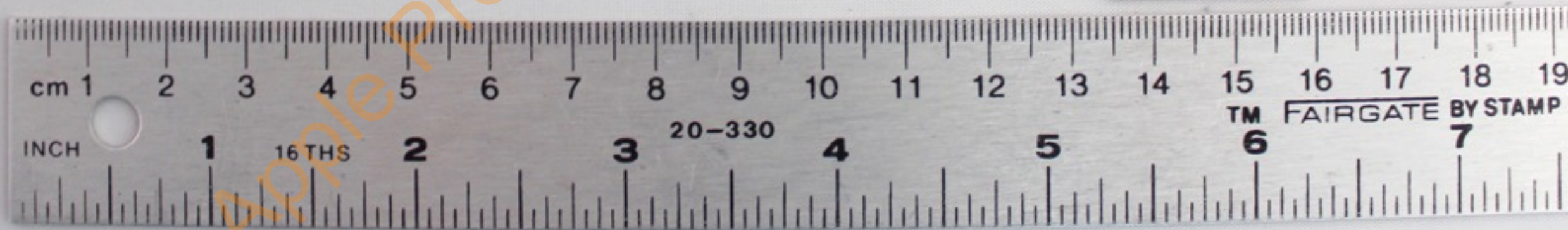
Headphone jack and Microphone
assembly- Front



Apple Proprietary and Confidential

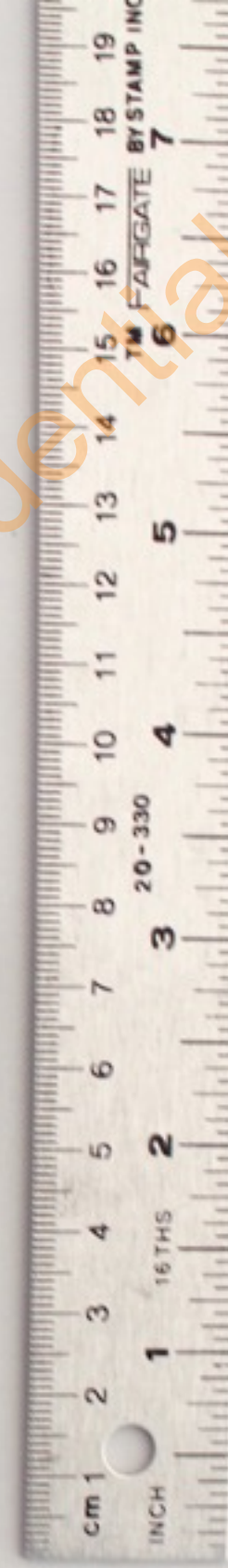
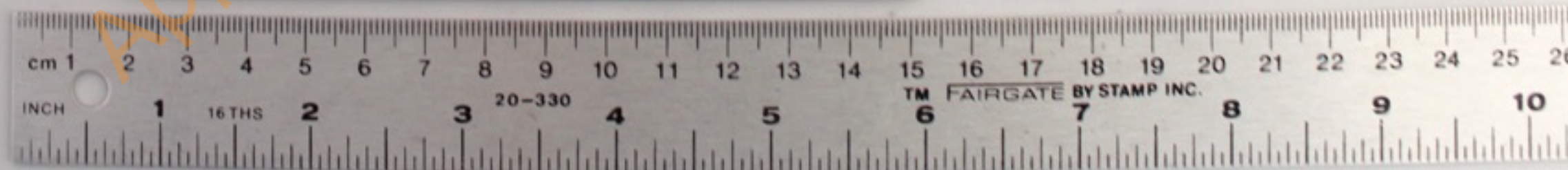
A1708

Headphone jack and Microphone
assembly- Back



A1708

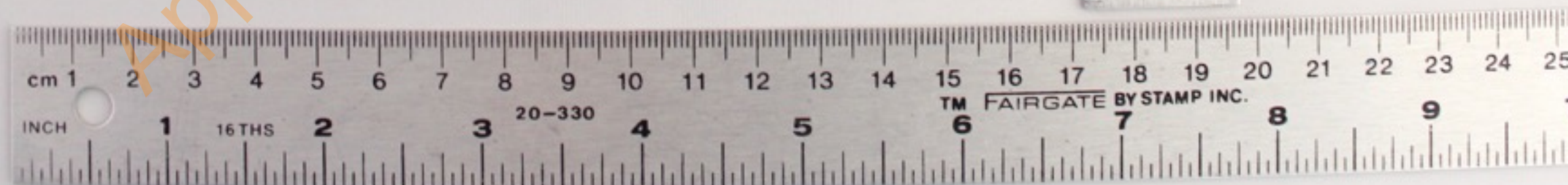
Multi-touch Trackpad- Front



Apple Proprietary and Confidential

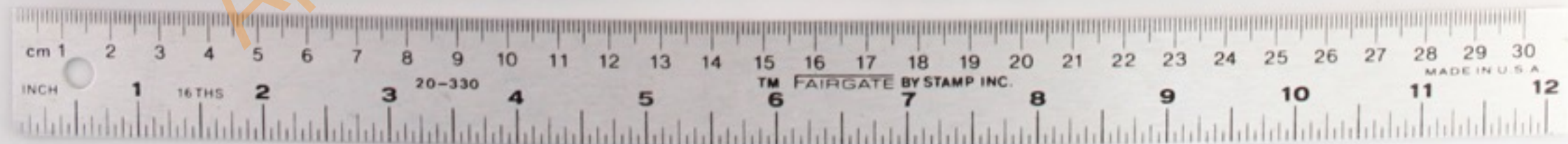
A1708

Multi-touch Trackpad- Back



A1708

Keyboard- Front



A1708
Keyboard- Back



A1708

Display assembly- Front



A1708

Display assembly- Back

