

GSM 850_Ant. D

Frequency: 824.2 MHz; Duty Cycle: 1:4; Room Ambient Temperature: 24.0°C; Liquid Temperature: 23.0°C
 Medium parameters used: $f = 825 \text{ MHz}$; $\sigma = 0.991 \text{ S/m}$; $\epsilon_r = 53.738$; $\rho = 1000 \text{ kg/m}^3$

DASY5 Configuration:

- Area Scan Setting: Find Secondary Maximum Within: 2.0 dB and with a peak SAR value greater than 0.0012W/kg
- Electronics: DAE4 Sn1434; Calibrated: 4/15/2016
- Probe: EX3DV4 - SN3929; ConvF(8.71, 8.71, 8.71); Calibrated: 3/22/2016;
- Sensor-Surface: 2.5mm (Mechanical Surface Detection (Locations From Previous Scan Used)), Sensor-Surface: 2.5mm (Mechanical Surface Detection)
- Phantom: ELI v5.0 B; Type: QDOVA002AA; Serial: 1248

Rear/GPRS 2 Slots_Ch 128/Area Scan (9x7x1): Measurement grid: dx=15mm, dy=15mm

Maximum value of SAR (measured) = 1.20 W/kg

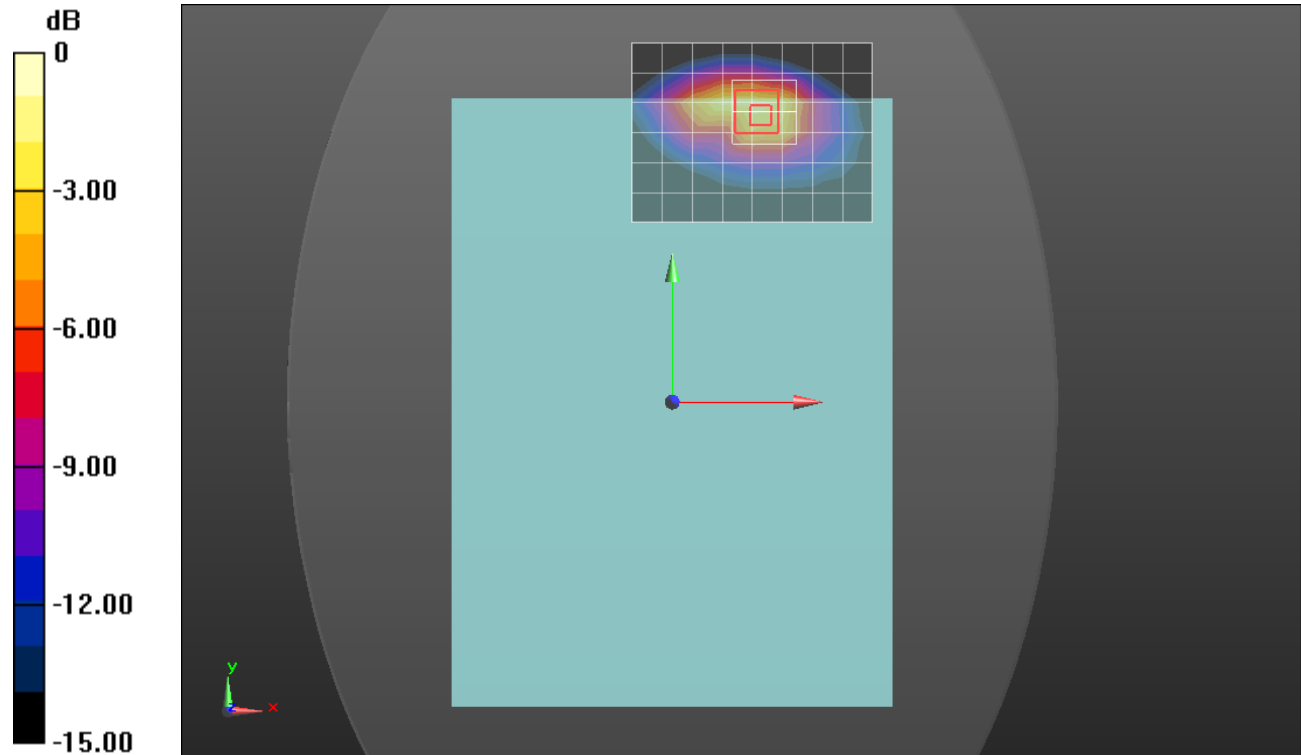
Rear/GPRS 2 Slots_Ch 128/Zoom Scan (5x5x7)/Cube 0: Measurement grid: dx=8mm, dy=8mm, dz=5mm

Reference Value = 35.25 V/m; Power Drift = -0.00 dB

Peak SAR (extrapolated) = 2.71 W/kg

SAR(1 g) = 1.17 W/kg; SAR(10 g) = 0.581 W/kg

Maximum value of SAR (measured) = 1.56 W/kg



0 dB = 1.56 W/kg = 1.93 dBW/kg

GSM 1900_Ant. D

Frequency: 1880 MHz; Duty Cycle: 1:4; Room Ambient Temperature: 24.0°C; Liquid Temperature: 23.0°C

Medium parameters used: $f = 1880 \text{ MHz}$; $\sigma = 1.53 \text{ S/m}$; $\epsilon_r = 51.169$; $\rho = 1000 \text{ kg/m}^3$

DASY5 Configuration:

- Area Scan Setting: Find Secondary Maximum Within: 2.0 dB and with a peak SAR value greater than 0.0012W/kg
- Electronics: DAE4 Sn1377; Calibrated: 9/14/2016
- Probe: EX3DV4 - SN3686; ConvF(7.46, 7.46, 7.46); Calibrated: 8/25/2016;
- Sensor-Surface: 2.5mm (Mechanical Surface Detection)
- Phantom: ELI v5.0 (B); Type: QDOVA001BB; Serial: 1118

Rear/GPRS 2 Slots_Ch 661/Area Scan (9x7x1): Measurement grid: dx=15mm, dy=15mm

Maximum value of SAR (measured) = 1.09 W/kg

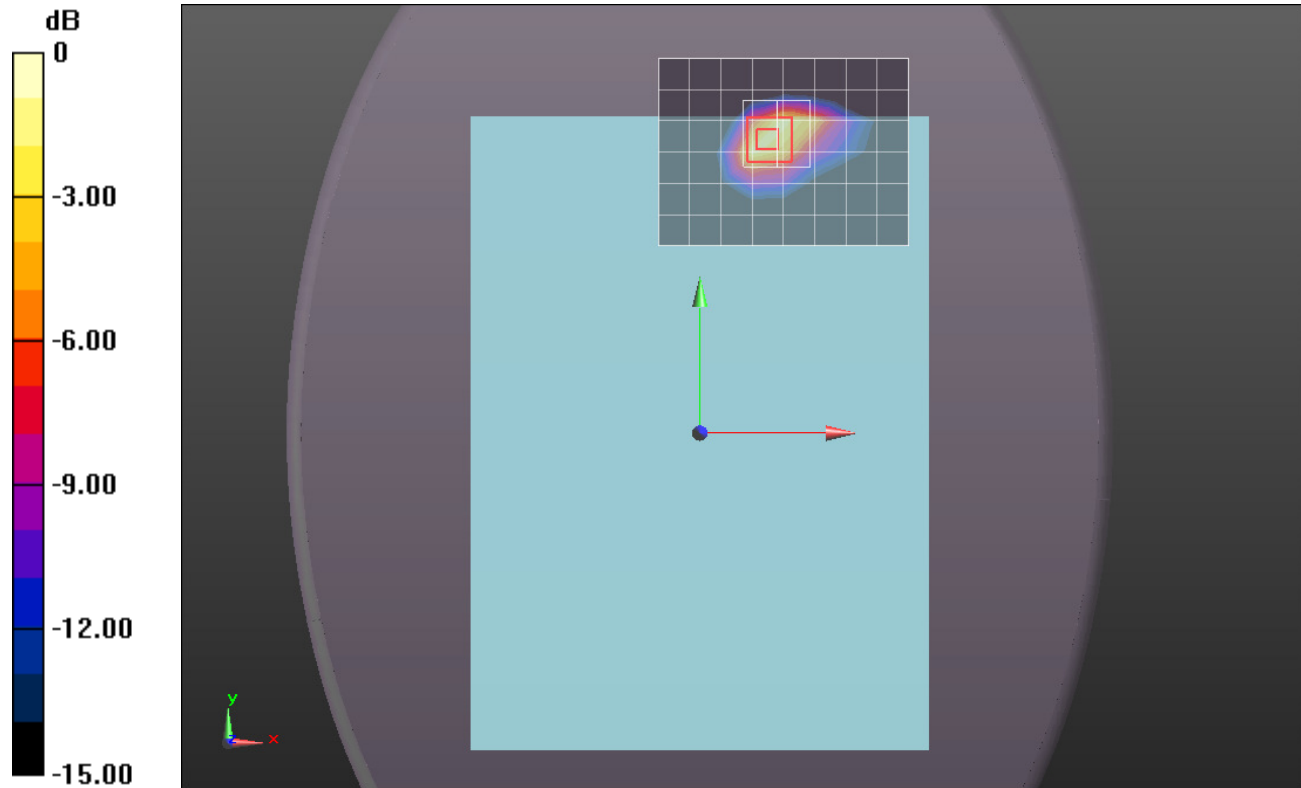
Rear/GPRS 2 Slots_Ch 661/Zoom Scan (5x5x7)/Cube 0: Measurement grid: dx=8mm, dy=8mm, dz=5mm

Reference Value = 27.934 V/m; Power Drift = -0.17 dB

Peak SAR (extrapolated) = 2.30 W/kg

SAR(1 g) = 1.14 W/kg; SAR(10 g) = 0.519 W/kg

Maximum value of SAR (measured) = 1.47 W/kg



0 dB = 1.47 W/kg = 1.67 dBW/kg

W-CDMA Band II_Ant. C

Frequency: 1880 MHz; Duty Cycle: 1:1; Room Ambient Temperature: 24.0°C; Liquid Temperature: 23.0°C
 Medium parameters used: $f = 1880 \text{ MHz}$; $\sigma = 1.53 \text{ S/m}$; $\epsilon_r = 51.169$; $\rho = 1000 \text{ kg/m}^3$
 DASY5 Configuration:

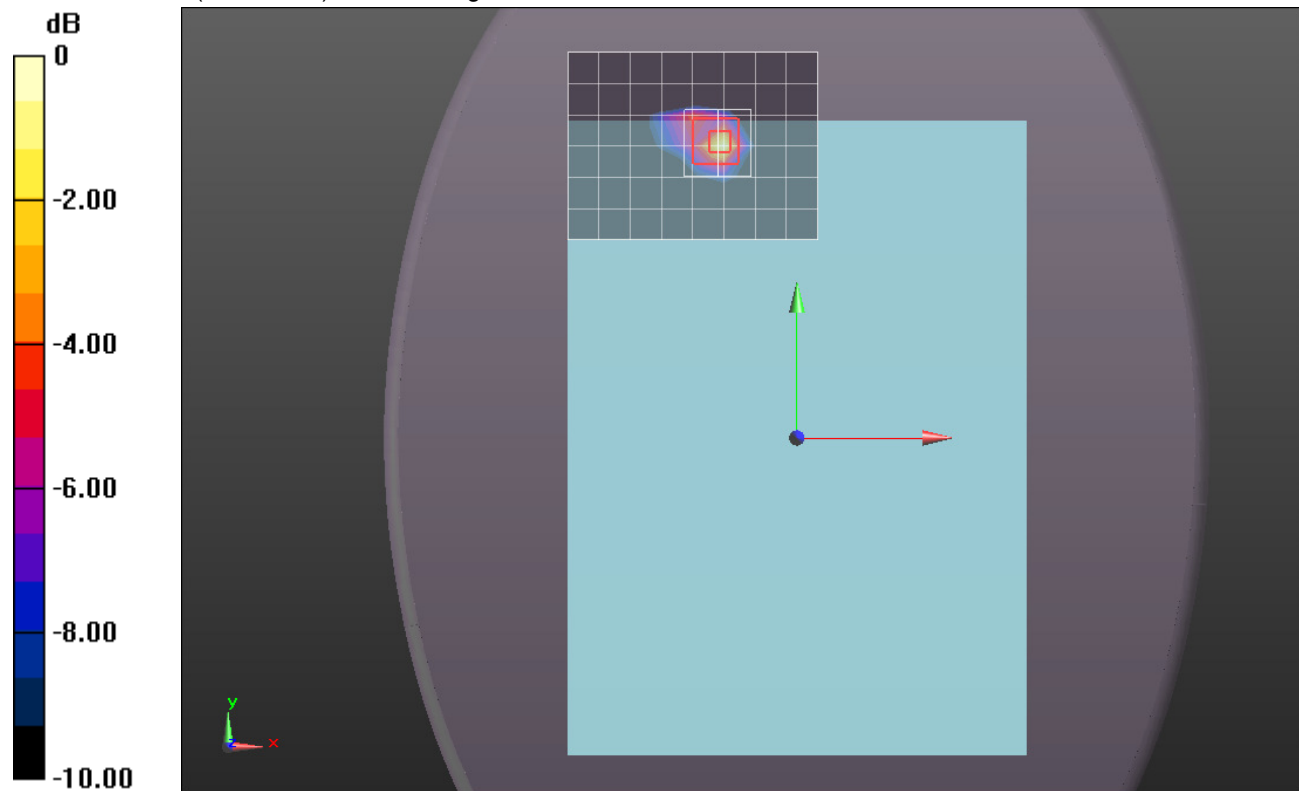
- Area Scan Setting: Find Secondary Maximum Within: 2.0 dB and with a peak SAR value greater than 0.0012W/kg
- Electronics: DAE4 Sn1377; Calibrated: 9/14/2016
- Probe: EX3DV4 - SN3686; ConvF(7.46, 7.46, 7.46); Calibrated: 8/25/2016;
- Sensor-Surface: 2.5mm (Mechanical Surface Detection)
- Phantom: ELI v5.0 (B); Type: QDOVA001BB; Serial: 1118

Rear/Rel.99 RMC_Ch 9400/Area Scan (9x7x1): Measurement grid: dx=15mm, dy=15mm
 Maximum value of SAR (measured) = 1.38 W/kg

Rear/Rel.99 RMC_Ch 9400/Zoom Scan (5x5x7)/Cube 0: Measurement grid: dx=8mm, dy=8mm, dz=5mm

Reference Value = 30.344 V/m; Power Drift = 0.04 dB
 Peak SAR (extrapolated) = 2.07 W/kg

SAR(1 g) = 1.02 W/kg; SAR(10 g) = 0.451 W/kg
 Maximum value of SAR (measured) = 1.48 W/kg



0 dB = 1.48 W/kg = 1.70 dBW/kg

W-CDMA Band IV_Ant. C

Frequency: 1752.6 MHz; Duty Cycle: 1:1; Room Ambient Temperature: 24.0°C; Liquid Temperature: 23.0°C
 Medium parameters used (interpolated): $f = 1752.6 \text{ MHz}$; $\sigma = 1.515 \text{ S/m}$; $\epsilon_r = 52.778$; $\rho = 1000 \text{ kg/m}^3$

DASY5 Configuration:

- Area Scan Setting: Find Secondary Maximum Within: 2.0 dB and with a peak SAR value greater than 0.0012W/kg
- Electronics: DAE4 Sn1380; Calibrated: 7/25/2016
- Probe: EX3DV4 - SN3990; ConvF(8.4, 8.4, 8.4); Calibrated: 3/22/2016;
- Sensor-Surface: 2.5mm (Mechanical Surface Detection (Locations From Previous Scan Used)), Sensor-Surface: 2.5mm (Mechanical Surface Detection)
- Phantom: ELI v5.0 B; Type: QDOVA002AA; Serial: 1248

Rear/Rel.99 RMC_Ch 1513/Area Scan (9x8x1): Measurement grid: dx=15mm, dy=15mm

[Info: Interpolated medium parameters used for SAR evaluation.](#)

Maximum value of SAR (measured) = 1.35 W/kg

Rear/Rel.99 RMC_Ch 1513/Zoom Scan (5x5x7)/Cube 0: Measurement grid: dx=8mm, dy=8mm, dz=5mm

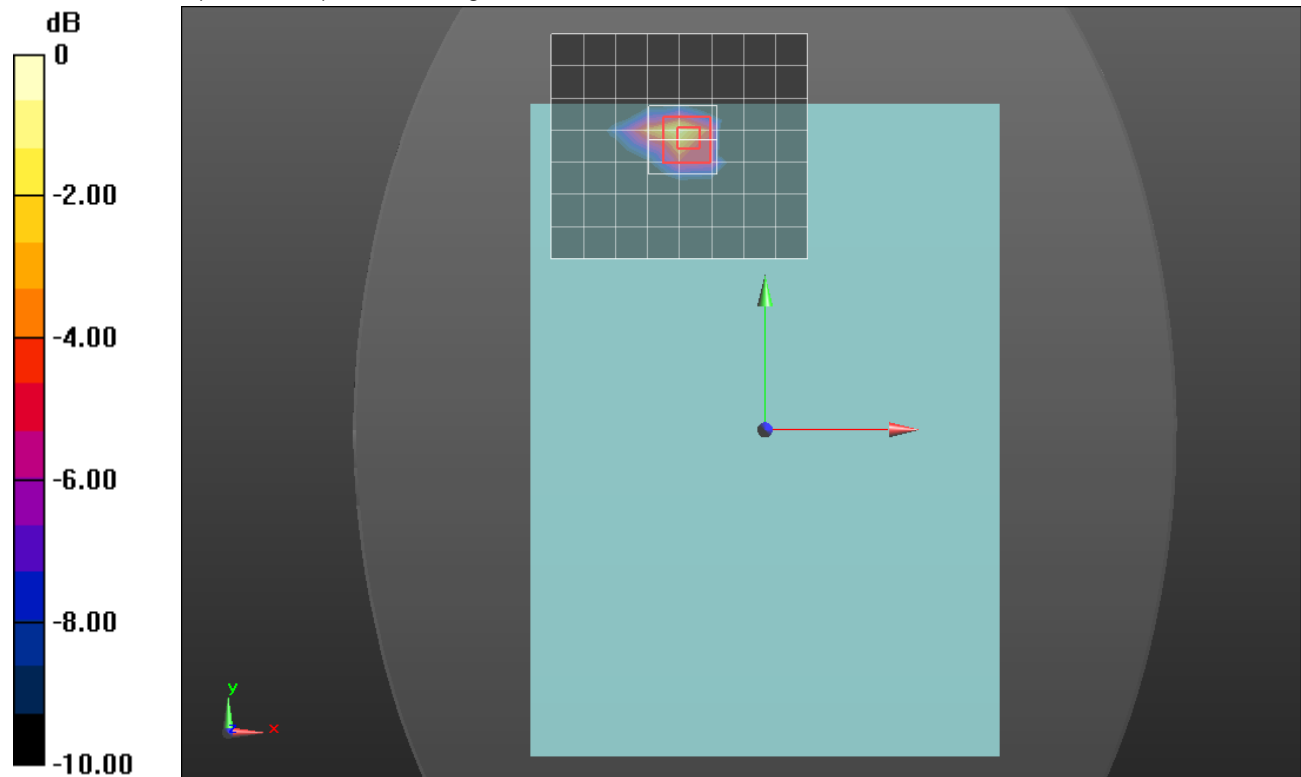
Reference Value = 30.058 V/m; Power Drift = 0.02 dB

Peak SAR (extrapolated) = 2.32 W/kg

SAR(1 g) = 1.14 W/kg; SAR(10 g) = 0.500 W/kg

[Info: Interpolated medium parameters used for SAR evaluation.](#)

Maximum value of SAR (measured) = 1.62 W/kg



0 dB = 1.62 W/kg = 2.10 dBW/kg

W-CDMA Band V_Ant. D

Frequency: 826.4 MHz; Duty Cycle: 1:1; Room Ambient Temperature: 24.0°C; Liquid Temperature: 23.0°C
 Medium parameters used (interpolated): $f = 826.4$ MHz; $\sigma = 0.98$ S/m; $\epsilon_r = 53.484$; $\rho = 1000$ kg/m³

DASY5 Configuration:

- Area Scan Setting: Find Secondary Maximum Within: 2.0 dB and with a peak SAR value greater than 0.0012W/kg
- Electronics: DAE4 Sn1472; Calibrated: 3/24/2016
- Probe: EX3DV4 - SN7335; ConvF(9.75, 9.75, 9.75); Calibrated: 3/22/2016;
- Sensor-Surface: 2.5mm (Mechanical Surface Detection)
- Phantom: ELI v5.0 A; Type: SM 000 T01 DA; Serial: TP:1247

Rear/Rel.99 RMC_Ch 4132/Area Scan (9x7x1): Measurement grid: dx=15mm, dy=15mm

[Info: Interpolated medium parameters used for SAR evaluation.](#)

Maximum value of SAR (measured) = 1.54 W/kg

Rear/Rel.99 RMC_Ch 4132/Zoom Scan (5x5x7)/Cube 0: Measurement grid: dx=8mm, dy=8mm, dz=5mm

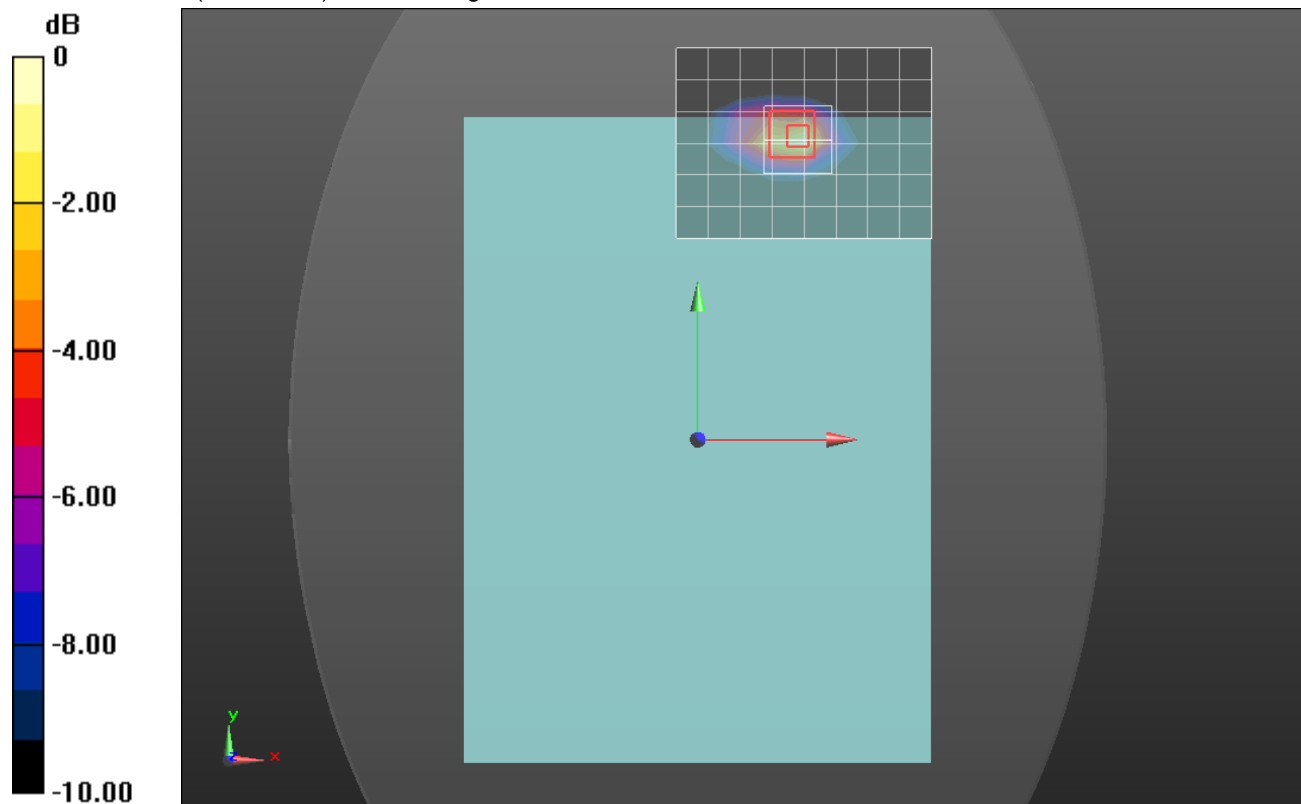
Reference Value = 40.119 V/m; Power Drift = 0.00 dB

Peak SAR (extrapolated) = 2.89 W/kg

SAR(1 g) = 1.12 W/kg; SAR(10 g) = 0.524 W/kg

[Info: Interpolated medium parameters used for SAR evaluation.](#)

Maximum value of SAR (measured) = 1.61 W/kg



0 dB = 1.61 W/kg = 2.07 dBW/kg

CDMA BC0_Ant. D

Frequency: 824.7 MHz; Duty Cycle: 1:1; Room Ambient Temperature: 24.0°C; Liquid Temperature: 23.0°C
 Medium parameters used: $f = 825 \text{ MHz}$; $\sigma = 0.977 \text{ S/m}$; $\epsilon_r = 53.84$; $\rho = 1000 \text{ kg/m}^3$
 DASY5 Configuration:

- Area Scan Setting: Find Secondary Maximum Within: 2.0 dB and with a peak SAR value greater than 0.0012W/kg
- Electronics: DAE4 Sn1472; Calibrated: 3/24/2016
- Probe: EX3DV4 - SN7335; ConvF(9.75, 9.75, 9.75); Calibrated: 3/22/2016;
- Sensor-Surface: 2.5mm (Mechanical Surface Detection)
- Phantom: ELI v5.0 A; Type: SM 000 T01 DA; Serial: TP:1247

Rear/1xRTT_RC3 SO32_Ch 1013/Area Scan (9x8x1): Measurement grid: dx=15mm, dy=15mm
 Maximum value of SAR (measured) = 1.54 W/kg

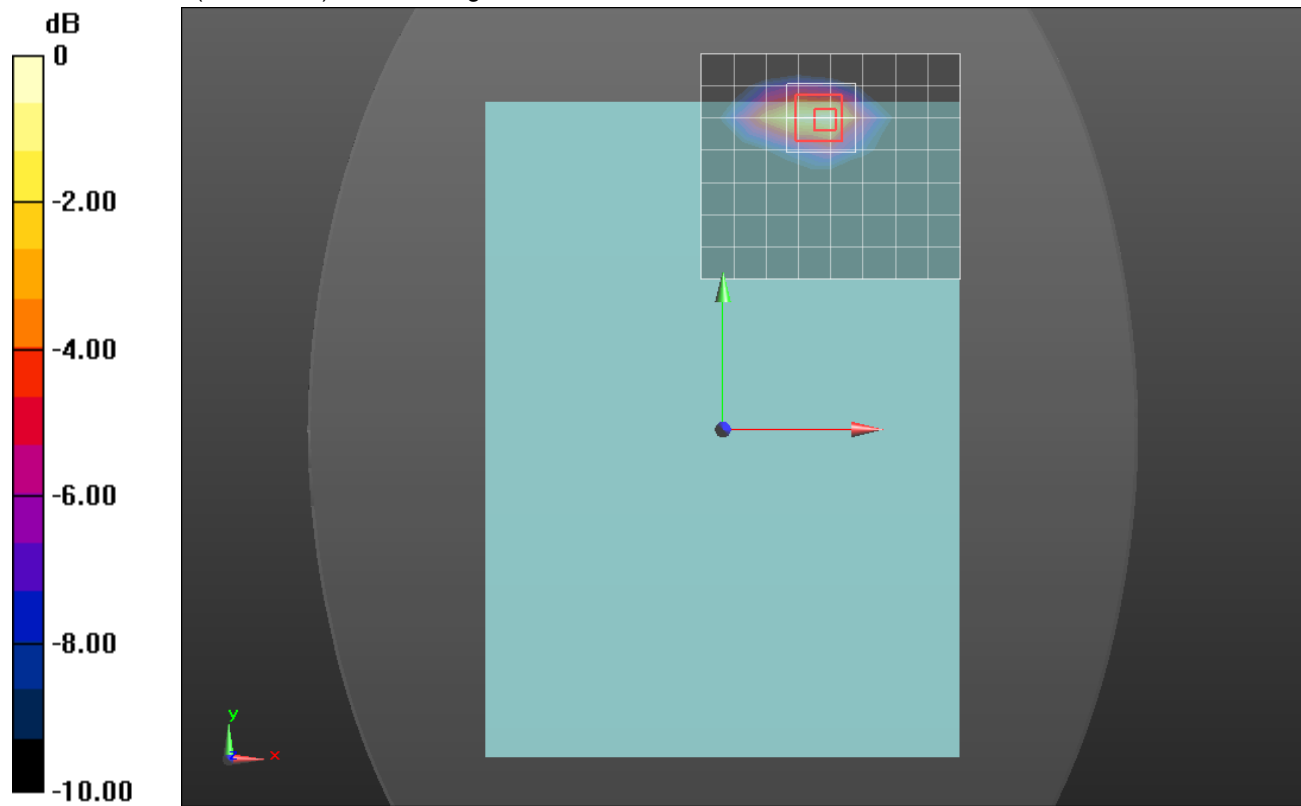
Rear/1xRTT_RC3 SO32_Ch 1013/Zoom Scan (5x5x7)/Cube 0: Measurement grid: dx=8mm, dy=8mm, dz=5mm

Reference Value = 40.181 V/m; Power Drift = -0.01 dB

Peak SAR (extrapolated) = 2.73 W/kg

SAR(1 g) = 1.09 W/kg; SAR(10 g) = 0.519 W/kg

Maximum value of SAR (measured) = 1.51 W/kg



0 dB = 1.51 W/kg = 1.79 dBW/kg

CDMA BC1_Ant. C

Frequency: 1908.75 MHz; Duty Cycle: 1:1; Room Ambient Temperature: 24.0°C; Liquid Temperature: 23.0°C
 Medium parameters used (interpolated): $f = 1908.75$ MHz; $\sigma = 1.552$ S/m; $\epsilon_r = 51.091$; $\rho = 1000$ kg/m³

DASY5 Configuration:

- Area Scan Setting: Find Secondary Maximum Within: 2.0 dB and with a peak SAR value greater than 0.0012W/kg
- Electronics: DAE4 Sn1377; Calibrated: 9/14/2016
- Probe: EX3DV4 - SN3686; ConvF(7.46, 7.46, 7.46); Calibrated: 8/25/2016;
- Sensor-Surface: 2.5mm (Mechanical Surface Detection (Locations From Previous Scan Used)), Sensor-Surface: 2.5mm (Mechanical Surface Detection)
- Phantom: ELI v5.0 (B); Type: QDOVA001BB; Serial: 1118

Rear/1xEVDO Rel 0_Ch 1175/Area Scan (9x7x1): Measurement grid: dx=15mm, dy=15mm

[Info: Interpolated medium parameters used for SAR evaluation.](#)

Maximum value of SAR (measured) = 1.20 W/kg

Rear/1xEVDO Rel 0_Ch 1175/Zoom Scan (5x5x7)/Cube 0: Measurement grid: dx=8mm, dy=8mm, dz=5mm

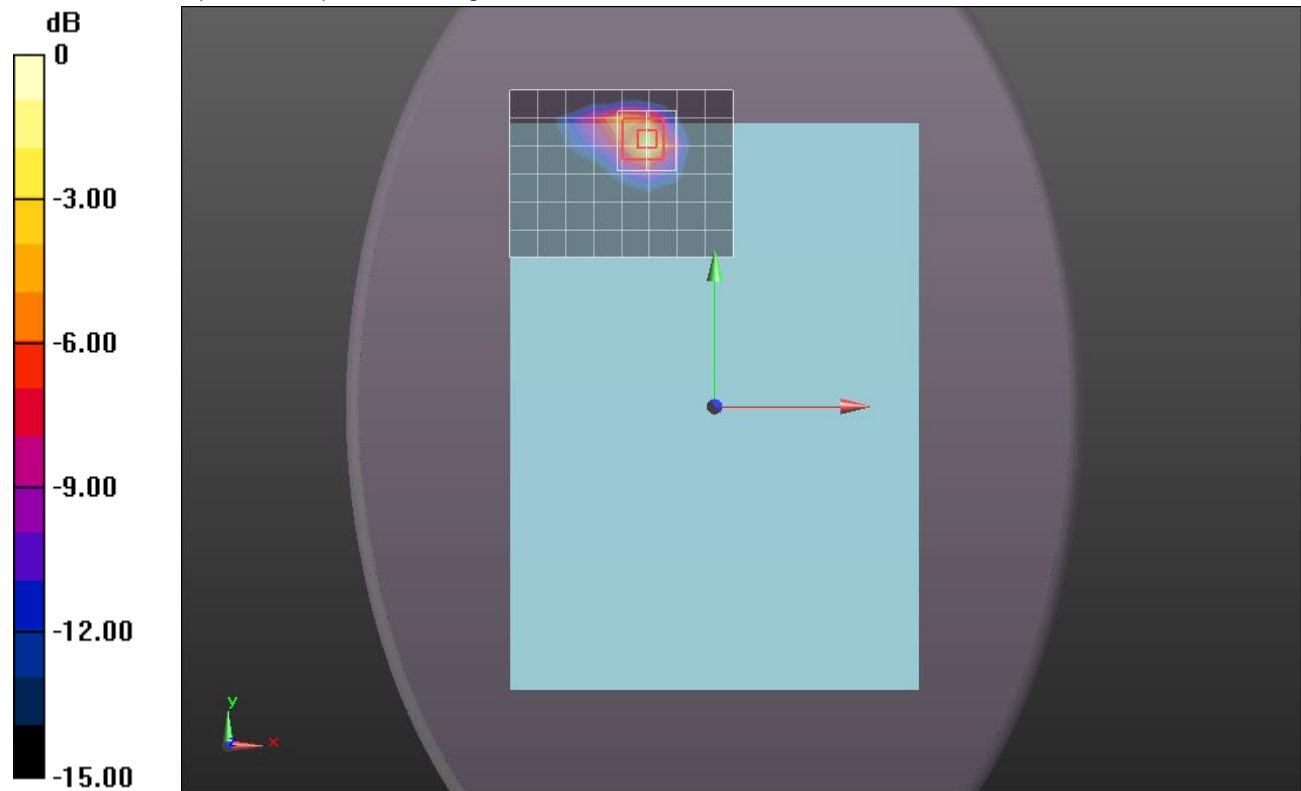
Reference Value = 27.531 V/m; Power Drift = -0.04 dB

Peak SAR (extrapolated) = 2.13 W/kg

SAR(1 g) = 1.04 W/kg; SAR(10 g) = 0.457 W/kg

[Info: Interpolated medium parameters used for SAR evaluation.](#)

Maximum value of SAR (measured) = 1.53 W/kg



0 dB = 1.53 W/kg = 1.85 dBW/kg

CDMA BC10_Ant. D

Frequency: 817.9 MHz; Duty Cycle: 1:1; Room Ambient Temperature: 24.0°C; Liquid Temperature: 23.0°C
 Medium parameters used (interpolated): $f = 817.9$ MHz; $\sigma = 0.97$ S/m; $\epsilon_r = 53.587$; $\rho = 1000$ kg/m³

DASY5 Configuration:

- Area Scan Setting: Find Secondary Maximum Within: 2.0 dB and with a peak SAR value greater than 0.0012W/kg
- Electronics: DAE4 Sn1472; Calibrated: 3/24/2016
- Probe: EX3DV4 - SN7335; ConvF(9.75, 9.75, 9.75); Calibrated: 3/22/2016;
- Sensor-Surface: 2.5mm (Mechanical Surface Detection)
- Phantom: ELI v5.0 A; Type: SM 000 T01 DA; Serial: TP:1247

Rear/1xRTT_RC3 SO32_Ch 476/Area Scan (9x8x1): Measurement grid: dx=15mm, dy=15mm

[Info: Interpolated medium parameters used for SAR evaluation.](#)

Maximum value of SAR (measured) = 1.44 W/kg

Rear/1xRTT_RC3 SO32_Ch 476/Zoom Scan (5x5x7)/Cube 0: Measurement grid: dx=8mm, dy=8mm, dz=5mm

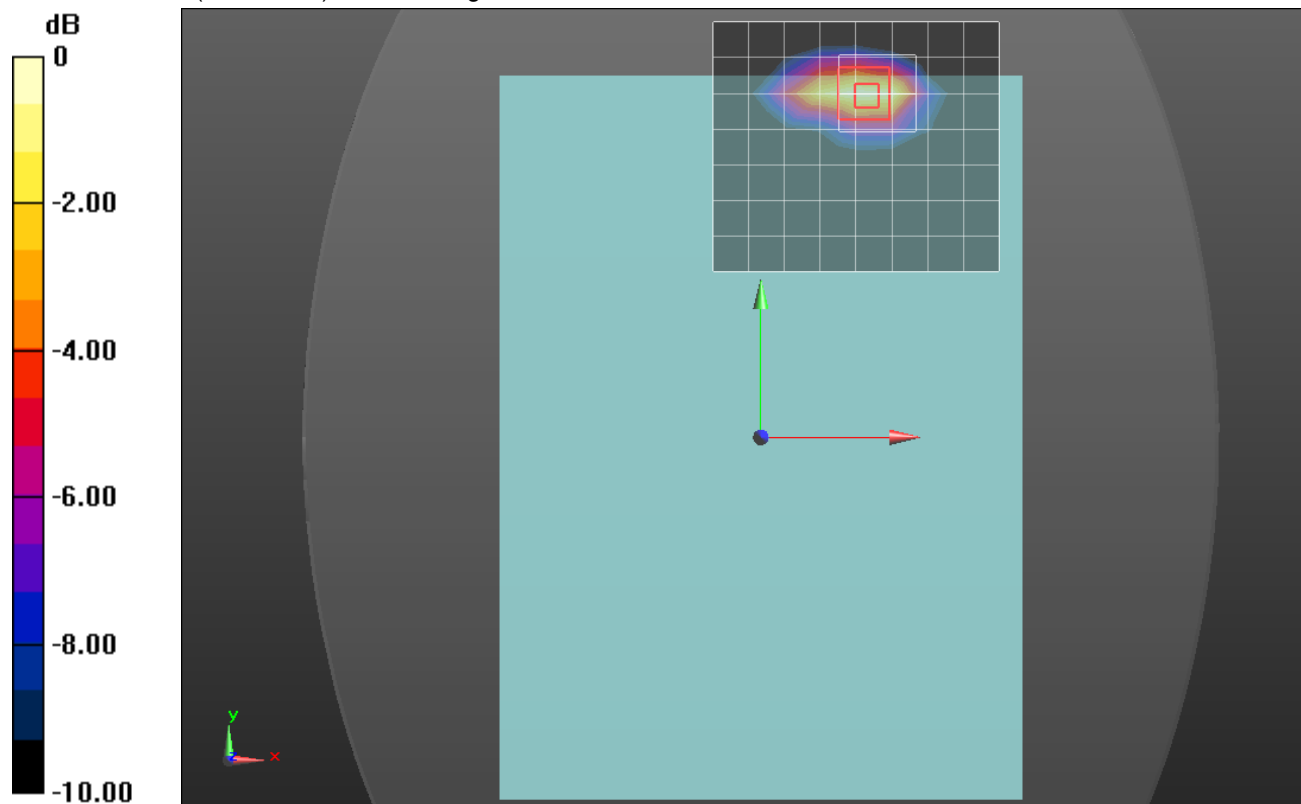
Reference Value = 38.871 V/m; Power Drift = -0.03 dB

Peak SAR (extrapolated) = 2.32 W/kg

SAR(1 g) = 1.02 W/kg; SAR(10 g) = 0.500 W/kg

[Info: Interpolated medium parameters used for SAR evaluation.](#)

Maximum value of SAR (measured) = 1.42 W/kg



0 dB = 1.42 W/kg = 1.52 dBW/kg

LTE Band 4_Ant. D

Frequency: 1745 MHz; Duty Cycle: 1:1; Room Ambient Temperature: 24.0°C; Liquid Temperature: 23.0°C

Medium parameters used: $f = 1745$ MHz; $\sigma = 1.509$ S/m; $\epsilon_r = 52.906$; $\rho = 1000$ kg/m³

DASY5 Configuration:

- Area Scan Setting: Find Secondary Maximum Within: 2.0 dB and with a peak SAR value greater than 0.0012W/kg
- Electronics: DAE4 Sn1380; Calibrated: 7/25/2016
- Probe: EX3DV4 - SN3990; ConvF(8.4, 8.4, 8.4); Calibrated: 3/22/2016;
- Sensor-Surface: 2.5mm (Mechanical Surface Detection (Locations From Previous Scan Used)), Sensor-Surface: 2.5mm (Mechanical Surface Detection)
- Phantom: ELI v5.0 B; Type: QDOVA002AA; Serial: 1248

Rear/QPSK_RB 1,49_Ch 20300/Area Scan (9x8x1): Measurement grid: dx=15mm, dy=15mm

Maximum value of SAR (measured) = 1.02 W/kg

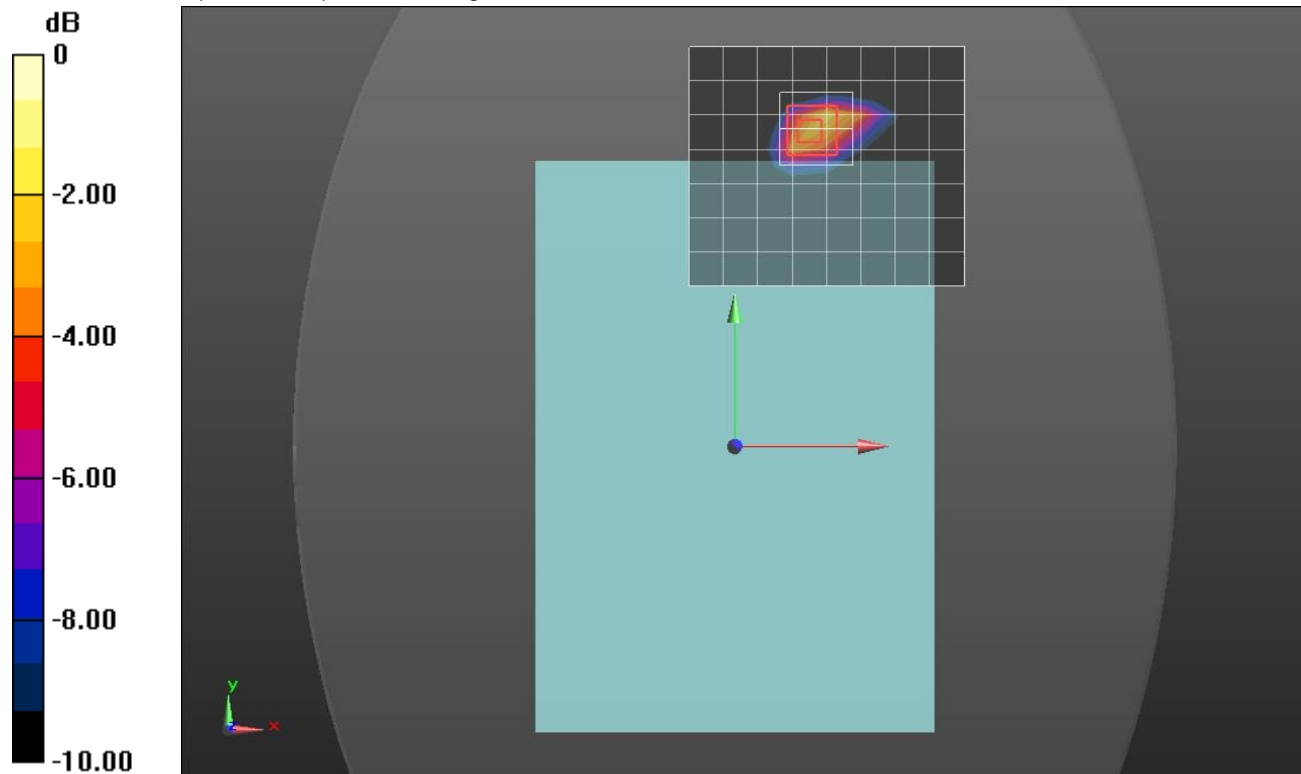
Rear/QPSK_RB 1,49_Ch 20300/Zoom Scan (5x5x7)/Cube 0: Measurement grid: dx=8mm, dy=8mm, dz=5mm

Reference Value = 26.712 V/m; Power Drift = 0.03 dB

Peak SAR (extrapolated) = 2.00 W/kg

SAR(1 g) = 1.02 W/kg; SAR(10 g) = 0.465 W/kg

Maximum value of SAR (measured) = 1.43 W/kg



0 dB = 1.43 W/kg = 1.55 dBW/kg

LTE Band 7_Ant. D

Frequency: 2535 MHz; Duty Cycle: 1:1; Room Ambient Temperature: 24.0°C; Liquid Temperature: 23.0°C

Medium parameters used: $f = 2535 \text{ MHz}$; $\sigma = 2.034 \text{ S/m}$; $\epsilon_r = 51.865$; $\rho = 1000 \text{ kg/m}^3$

DASY5 Configuration:

- Area Scan Setting: Find Secondary Maximum Within: 2.0 dB and with a peak SAR value greater than 0.0012W/kg
- Electronics: DAE4 Sn1257; Calibrated: 9/15/2016
- Probe: EX3DV4 - SN3991; ConvF(7.22, 7.22, 7.22); Calibrated: 5/12/2016;
- Sensor-Surface: 2.5mm (Mechanical Surface Detection)
- Phantom: ELI v5.0 (B); Type: QDOVA001BB; Serial: 1118

Rear/QPSK_RB 50,24_Ch 21100/Area Scan (11x8x1): Measurement grid: dx=12mm, dy=12mm

Maximum value of SAR (measured) = 1.37 W/kg

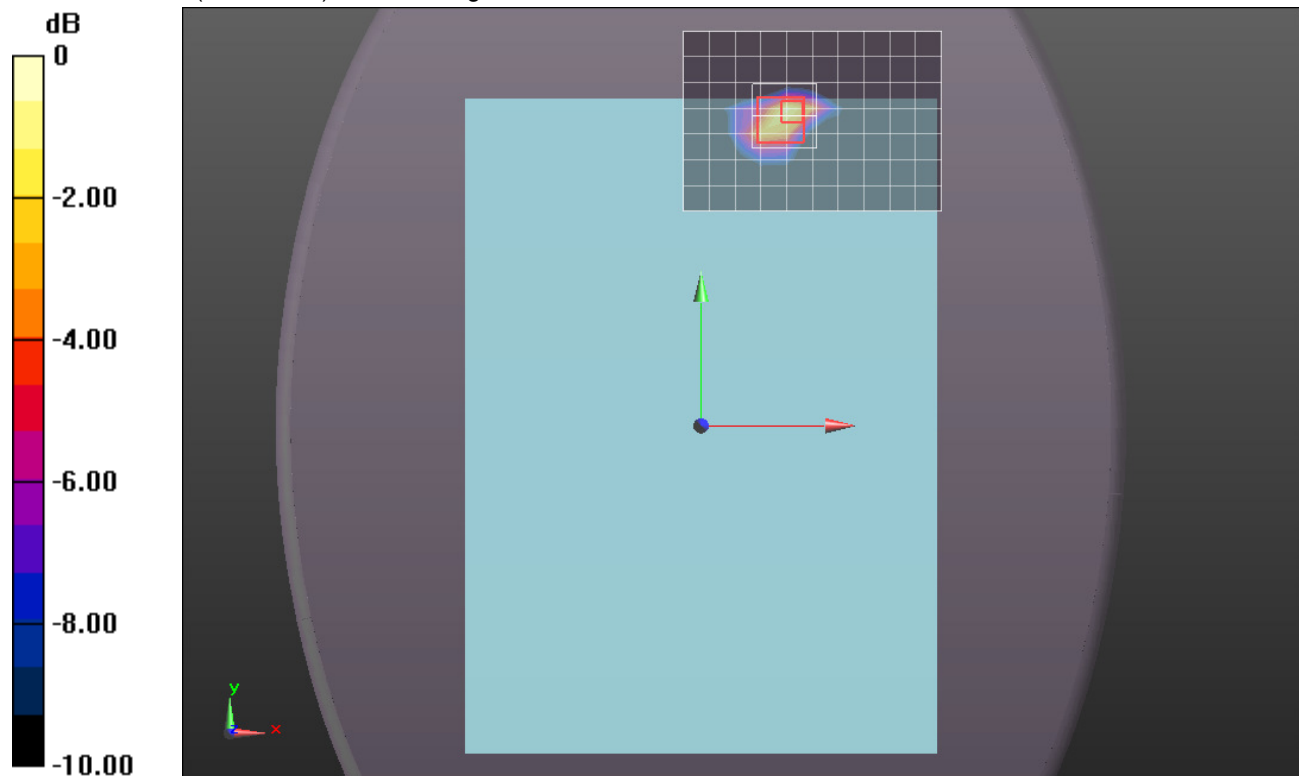
Rear/QPSK_RB 50,24_Ch 21100/Zoom Scan (7x7x7)/Cube 0: Measurement grid: dx=5mm, dy=5mm, dz=5mm

Reference Value = 26.684 V/m; Power Drift = -0.08 dB

Peak SAR (extrapolated) = 2.70 W/kg

SAR(1 g) = 1.05 W/kg; SAR(10 g) = 0.398 W/kg

Maximum value of SAR (measured) = 1.70 W/kg



0 dB = 1.70 W/kg = 2.30 dBW/kg

LTE Band 12_Ant. D

Frequency: 707.5 MHz; Duty Cycle: 1:1; Room Ambient Temperature: 24.0°C; Liquid Temperature: 23.0°C
 Medium parameters used (interpolated): $f = 707.5$ MHz; $\sigma = 0.928$ S/m; $\epsilon_r = 54.221$; $\rho = 1000$ kg/m³

DASY5 Configuration:

- Area Scan Setting: Find Secondary Maximum Within: 2.0 dB and with a peak SAR value greater than 0.0012W/kg
- Electronics: DAE4 Sn1439; Calibrated: 7/25/2016
- Probe: EX3DV4 - SN3885; ConvF(9.73, 9.73, 9.73); Calibrated: 9/20/2016;
- Sensor-Surface: 2.5mm (Mechanical Surface Detection (Locations From Previous Scan Used)), Sensor-Surface: 2.5mm (Mechanical Surface Detection)
- Phantom: ELI v5.0 (A); Type: QDOVA001BB; Serial: 1120

Rear/QPSK RB 50,0 Ch 23095 Ant D/Area Scan (9x7x1): Measurement grid: dx=15mm, dy=15mm

[Info: Interpolated medium parameters used for SAR evaluation.](#)

Maximum value of SAR (measured) = 1.09 W/kg

Rear/QPSK RB 50,0 Ch 23095 Ant D/Zoom Scan (5x5x7)/Cube 0: Measurement grid: dx=8mm, dy=8mm, dz=5mm

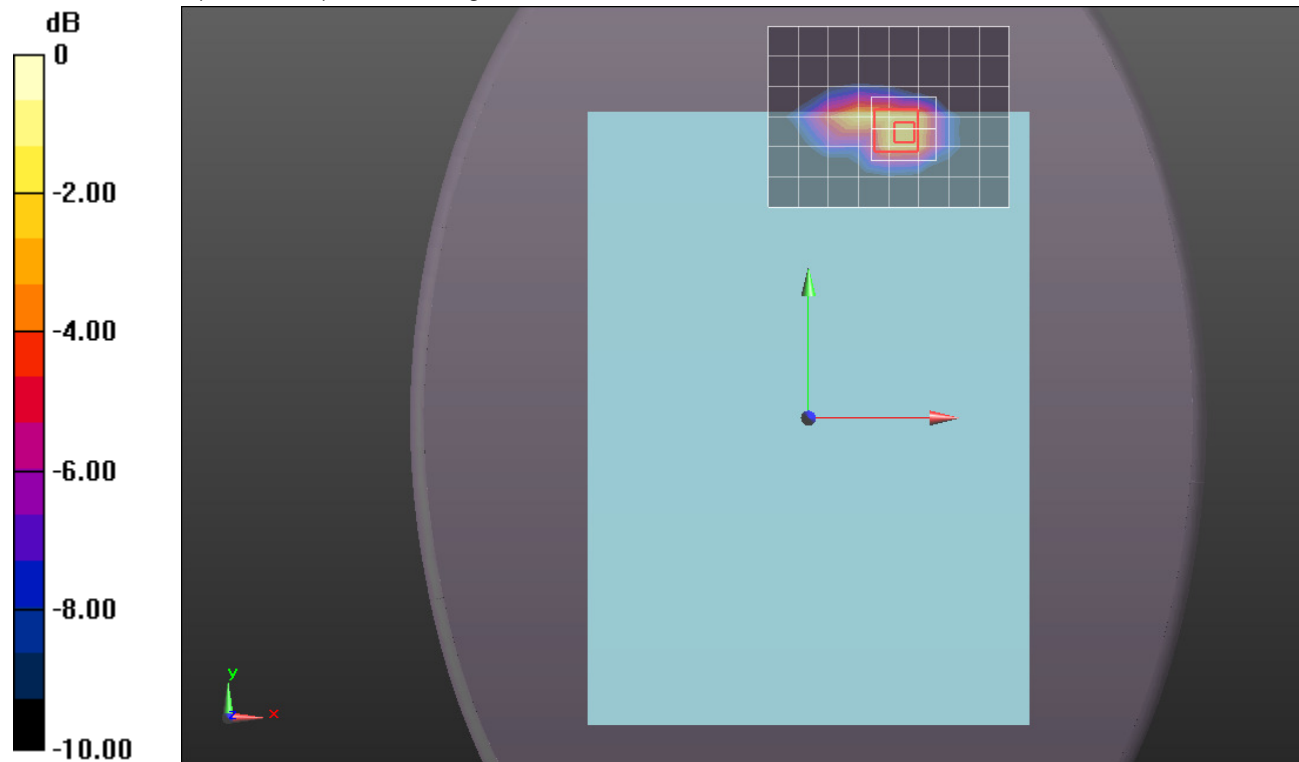
Reference Value = 34.60 V/m; Power Drift = -0.02 dB

Peak SAR (extrapolated) = 3.09 W/kg

SAR(1 g) = 1.19 W/kg; SAR(10 g) = 0.584 W/kg

[Info: Interpolated medium parameters used for SAR evaluation.](#)

Maximum value of SAR (measured) = 1.62 W/kg



0 dB = 1.62 W/kg = 2.10 dBW/kg

LTE Band 13_Ant. D

Frequency: 782 MHz; Duty Cycle: 1:1; Room Ambient Temperature: 24.0°C; Liquid Temperature: 23.0°C
 Medium parameters used (interpolated): $f = 782 \text{ MHz}$; $\sigma = 1.003 \text{ S/m}$; $\epsilon_r = 53.292$; $\rho = 1000 \text{ kg/m}^3$

DASY5 Configuration:

- Area Scan Setting: Find Secondary Maximum Within: 2.0 dB and with a peak SAR value greater than 0.0012W/kg
- Electronics: DAE4 Sn1439; Calibrated: 7/25/2016
- Probe: EX3DV4 - SN3885; ConvF(9.73, 9.73, 9.73); Calibrated: 9/20/2016;
- Sensor-Surface: 2.5mm (Mechanical Surface Detection (Locations From Previous Scan Used)), Sensor-Surface: 2.5mm (Mechanical Surface Detection)
- Phantom: ELI v5.0 (A); Type: QDOVA001BB; Serial: 1120

Rear/QPSK_RB 50,0_Ch 23230/Area Scan (9x7x1): Measurement grid: dx=15mm, dy=15mm

[Info: Interpolated medium parameters used for SAR evaluation.](#)

Maximum value of SAR (measured) = 1.06 W/kg

Rear/QPSK_RB 50,0_Ch 23230/Zoom Scan (5x5x7)/Cube 0: Measurement grid: dx=8mm, dy=8mm, dz=5mm

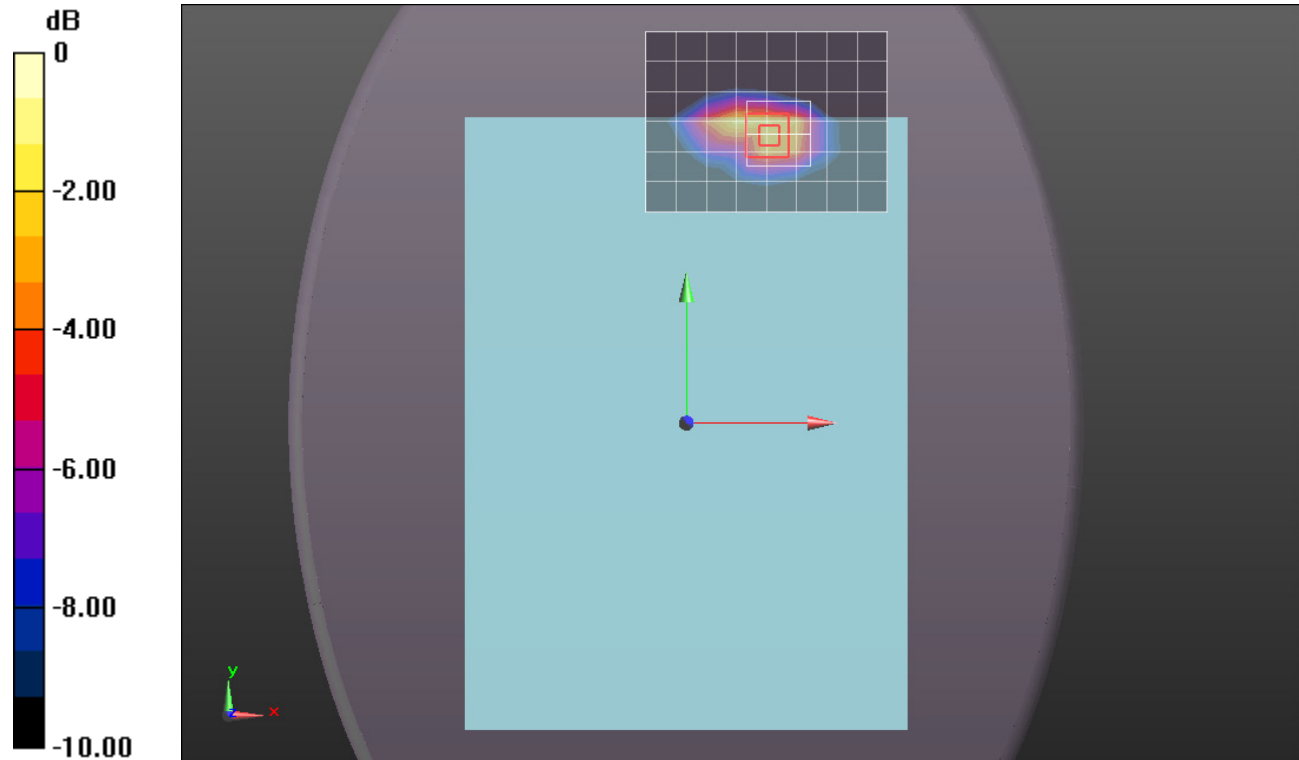
Reference Value = 34.46 V/m; Power Drift = -0.02 dB

Peak SAR (extrapolated) = 2.56 W/kg

SAR(1 g) = 1.1 W/kg; SAR(10 g) = 0.572 W/kg

[Info: Interpolated medium parameters used for SAR evaluation.](#)

Maximum value of SAR (measured) = 1.51 W/kg



0 dB = 1.51 W/kg = 1.79 dBW/kg

LTE Band 25_Ant. D

Frequency: 1905 MHz; Duty Cycle: 1:1; Room Ambient Temperature: 24.0°C; Liquid Temperature: 23.0°C

Medium parameters used: $f = 1905 \text{ MHz}$; $\sigma = 1.55 \text{ S/m}$; $\epsilon_r = 51.12$; $\rho = 1000 \text{ kg/m}^3$

DASY5 Configuration:

- Area Scan Setting: Find Secondary Maximum Within: 2.0 dB and with a peak SAR value greater than 0.0012W/kg
- Electronics: DAE4 Sn1377; Calibrated: 9/14/2016
- Probe: EX3DV4 - SN3686; ConvF(7.46, 7.46, 7.46); Calibrated: 8/25/2016;
- Sensor-Surface: 2.5mm (Mechanical Surface Detection (Locations From Previous Scan Used)), Sensor-Surface: 2.5mm (Mechanical Surface Detection)
- Phantom: ELI v5.0 (B); Type: QDOVA001BB; Serial: 1118

Rear/QPSK_RB 50,24_Ch 26590/Area Scan (9x7x1): Measurement grid: dx=15mm, dy=15mm

Maximum value of SAR (measured) = 1.12 W/kg

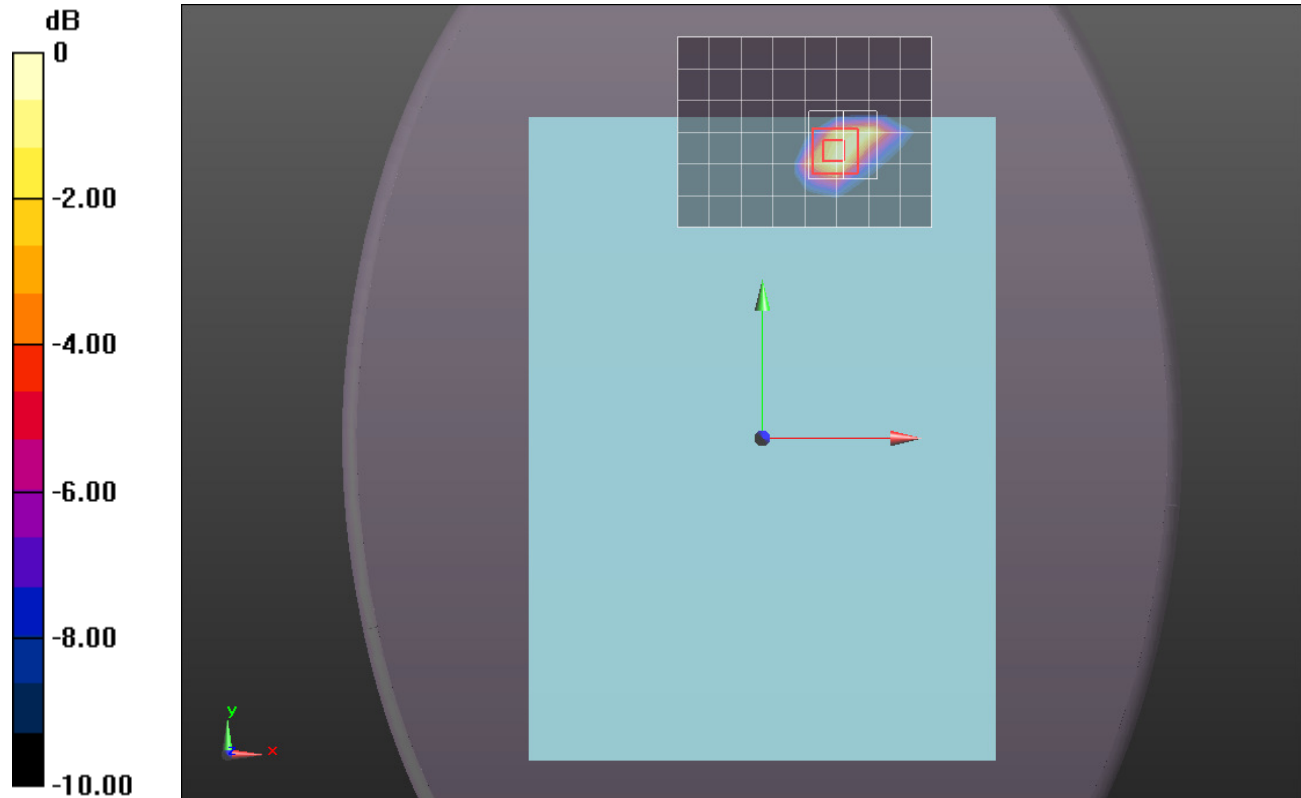
Rear/QPSK_RB 50,24_Ch 26590/Zoom Scan (5x5x7)/Cube 0: Measurement grid: dx=8mm, dy=8mm, dz=5mm

Reference Value = 25.662 V/m; Power Drift = 0.18 dB

Peak SAR (extrapolated) = 2.05 W/kg

SAR(1 g) = 1.01 W/kg; SAR(10 g) = 0.450 W/kg

Maximum value of SAR (measured) = 1.26 W/kg



0 dB = 1.26 W/kg = 1.00 dBW/kg

LTE Band 26_Ant. D

Frequency: 841.5 MHz; Duty Cycle: 1:1; Room Ambient Temperature: 24.0°C; Liquid Temperature: 23.0°C

Medium parameters used (interpolated): $f = 841.5$ MHz; $\sigma = 0.995$ S/m; $\epsilon_r = 53.303$; $\rho = 1000$ kg/m³

DASY5 Configuration:

- Area Scan Setting: Find Secondary Maximum Within: 2.0 dB and with a peak SAR value greater than 0.0012W/kg
- Electronics: DAE4 Sn1472; Calibrated: 3/24/2016
- Probe: EX3DV4 - SN7335; ConvF(9.75, 9.75, 9.75); Calibrated: 3/22/2016;
- Sensor-Surface: 2.5mm (Mechanical Surface Detection (Locations From Previous Scan Used)), Sensor-Surface: 2.5mm (Mechanical Surface Detection)
- Phantom: ELI v5.0 A; Type: SM 000 T01 DA; Serial: TP:1247

Rear/QPSK_RB 25,12_Ch 26965/Area Scan (9x7x1): Measurement grid: dx=15mm, dy=15mm

[Info: Interpolated medium parameters used for SAR evaluation.](#)

Maximum value of SAR (measured) = 0.714 W/kg

Rear/QPSK_RB 25,12_Ch 26965/Zoom Scan (5x5x7)/Cube 0: Measurement grid: dx=8mm, dy=8mm, dz=5mm

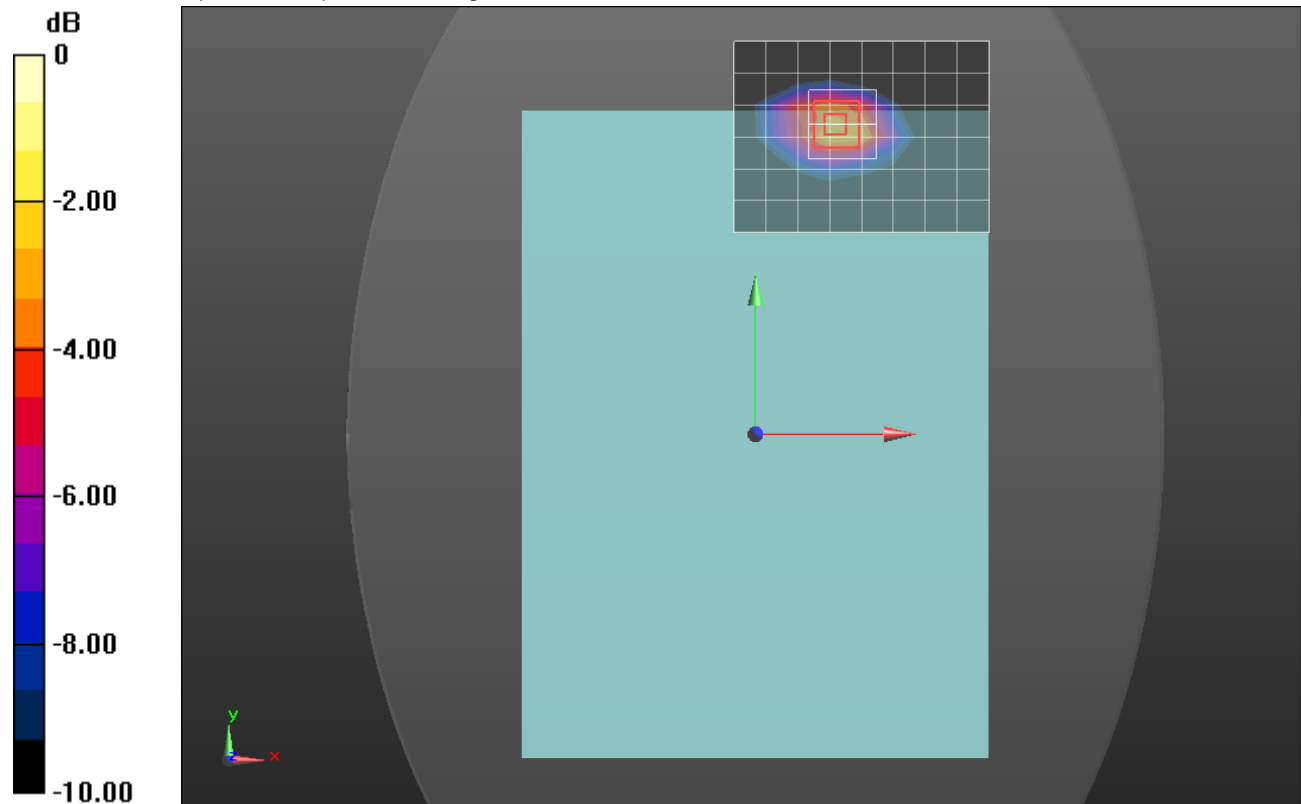
Reference Value = 31.167 V/m; Power Drift = 0.00 dB

Peak SAR (extrapolated) = 1.79 W/kg

SAR(1 g) = 0.891 W/kg; SAR(10 g) = 0.460 W/kg

[Info: Interpolated medium parameters used for SAR evaluation.](#)

Maximum value of SAR (measured) = 1.23 W/kg



0 dB = 1.23 W/kg = 0.90 dBW/kg

LTE Band 30_Ant. C

Frequency: 2310 MHz; Duty Cycle: 1:1; Room Ambient Temperature: 24.0°C; Liquid Temperature: 23.0°C

Medium parameters used: $f = 2310 \text{ MHz}$; $\sigma = 1.837 \text{ S/m}$; $\epsilon_r = 53.873$; $\rho = 1000 \text{ kg/m}^3$

DASY5 Configuration:

- Area Scan Setting: Find Secondary Maximum Within: 2.0 dB and with a peak SAR value greater than 0.0012W/kg
- Electronics: DAE4 Sn1433; Calibrated: 3/17/2016
- Probe: EX3DV4 - SN3936; ConvF(7.49, 7.49, 7.49); Calibrated: 7/26/2016;
- Sensor-Surface: 2.5mm (Mechanical Surface Detection)
- Phantom: ELI v5.0 (A); Type: QDOVA001BB; Serial: 1117

Rear/QPSK_RB 1,24_Ch 27710/Area Scan (13x8x1): Measurement grid: dx=12mm, dy=12mm
 Maximum value of SAR (measured) = 1.67 W/kg

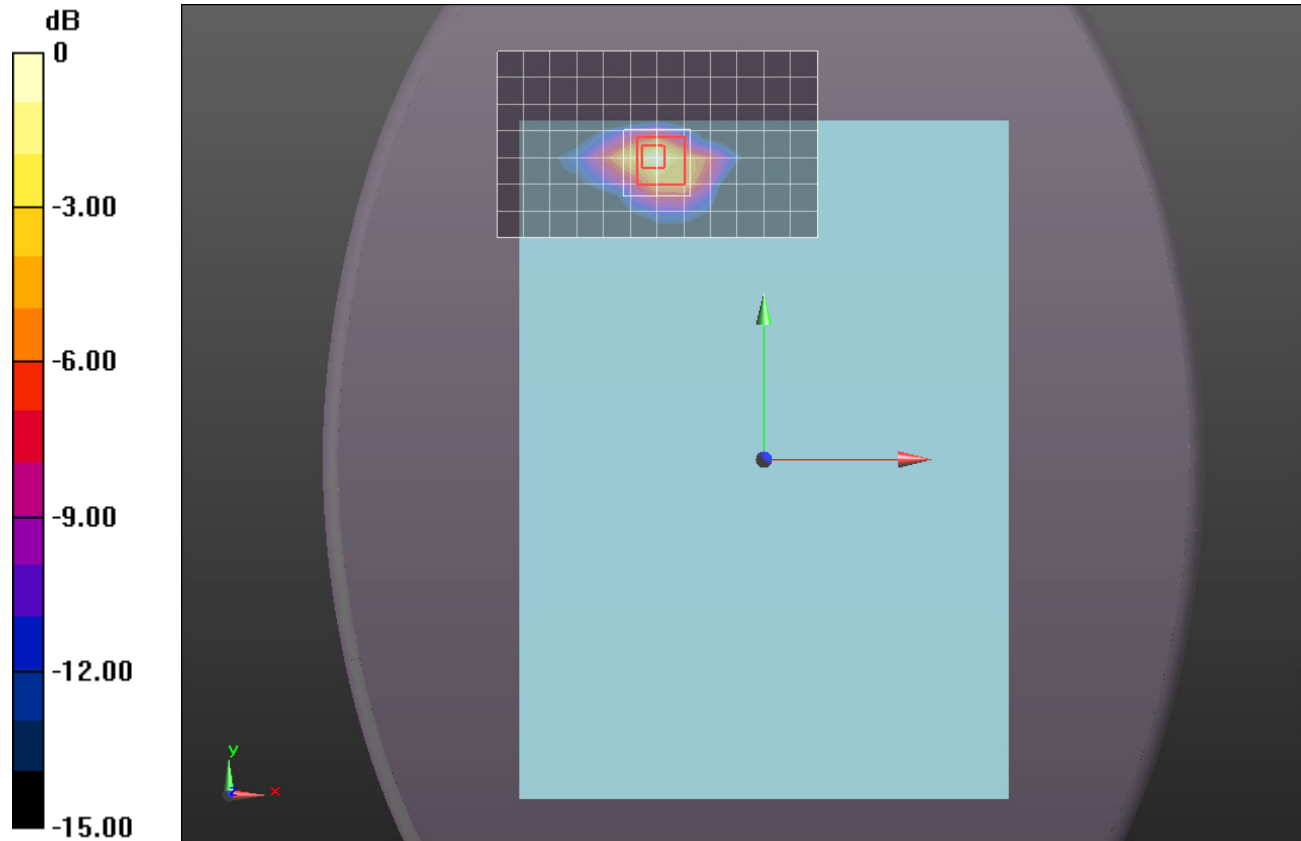
Rear/QPSK_RB 1,24_Ch 27710/Zoom Scan (7x7x7)/Cube 0: Measurement grid: dx=5mm, dy=5mm, dz=5mm

Reference Value = 30.44 V/m; Power Drift = 0.16 dB

Peak SAR (extrapolated) = 2.82 W/kg

SAR(1 g) = 1.13 W/kg; SAR(10 g) = 0.435 W/kg

Maximum value of SAR (measured) = 1.61 W/kg



0 dB = 1.61 W/kg = 2.07 dBW/kg

LTE Band 41_Ant. D

Frequency: 2680 MHz; Duty Cycle: 1:1.59956; Room Ambient Temperature: 24.0°C; Liquid Temperature: 23.0°C
 Medium parameters used: $f = 2680 \text{ MHz}$; $\sigma = 2.373 \text{ S/m}$; $\epsilon_r = 50.228$; $\rho = 1000 \text{ kg/m}^3$
 DASY5 Configuration:

- Area Scan Setting: Find Secondary Maximum Within: 2.0 dB and with a peak SAR value greater than 0.0012W/kg
- Electronics: DAE4 Sn1433; Calibrated: 3/17/2016
- Probe: EX3DV4 - SN3936; ConvF(7.07, 7.07, 7.07); Calibrated: 7/26/2016;
- Sensor-Surface: 2.5mm (Mechanical Surface Detection)
- Phantom: ELI v5.0 (A); Type: QDOVA001BB; Serial: 1117

Rear/QPSK_RB 1,49_Ch 41490/Area Scan (13x11x1): Measurement grid: dx=12mm, dy=12mm
 Maximum value of SAR (measured) = 1.37 W/kg

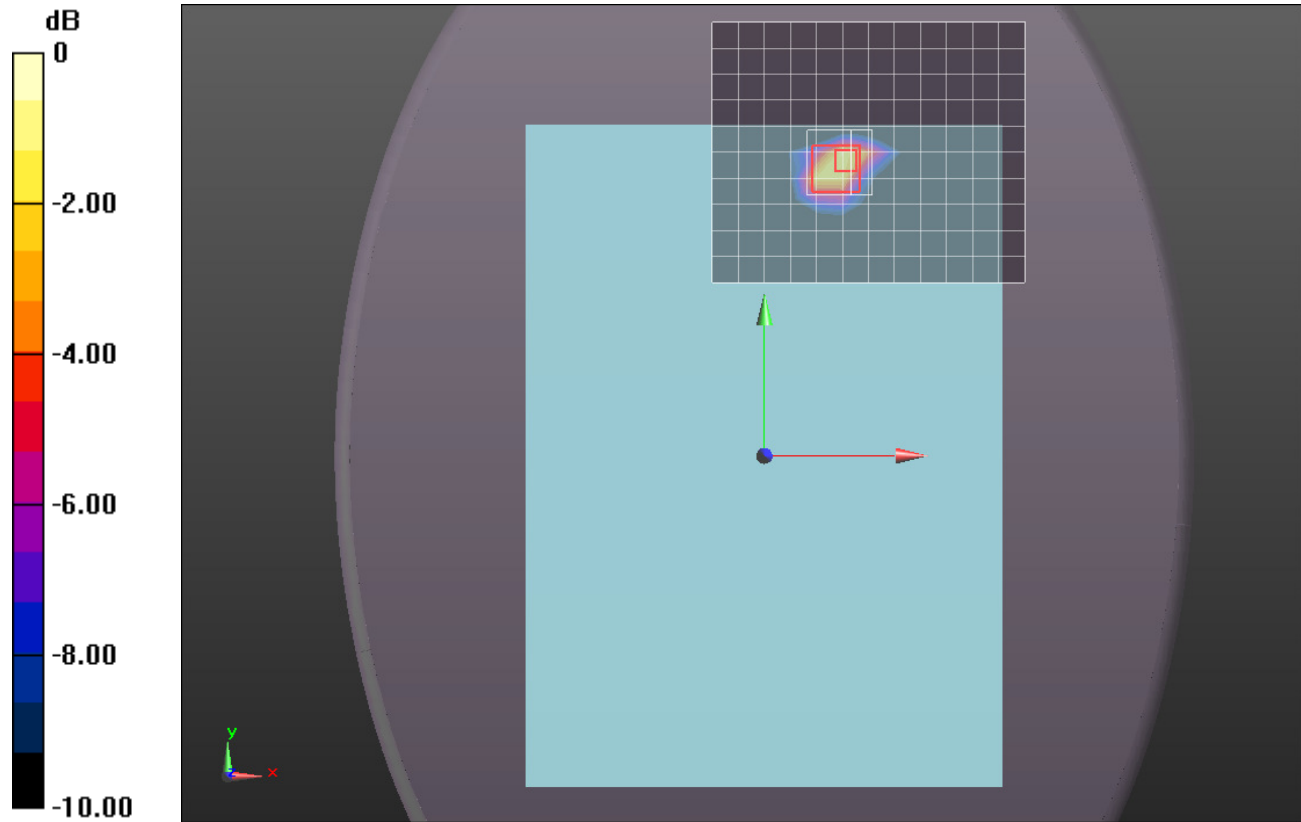
Rear/QPSK_RB 1,49_Ch 41490/Zoom Scan (7x7x7)/Cube 0: Measurement grid: dx=5mm, dy=5mm, dz=5mm

Reference Value = 24.25 V/m; Power Drift = -0.19 dB

Peak SAR (extrapolated) = 3.04 W/kg

SAR(1 g) = 1.17 W/kg; SAR(10 g) = 0.471 W/kg

Maximum value of SAR (measured) = 1.82 W/kg



0 dB = 1.82 W/kg = 2.60 dBW/kg

LTE-2CA Band 7_Ant. C

Frequency: 2510 MHz; Duty Cycle: 1:1; Room Ambient Temperature: 24.0°C; Liquid Temperature: 23.0°C

Medium parameters used: $f = 2510 \text{ MHz}$; $\sigma = 2.111 \text{ S/m}$; $\epsilon_r = 53.075$; $\rho = 1000 \text{ kg/m}^3$

DASY5 Configuration:

- Area Scan Setting: Find Secondary Maximum Within: 2.0 dB and with a peak SAR value greater than 0.0012W/kg
- Electronics: DAE4 Sn1433; Calibrated: 3/17/2016
- Probe: EX3DV4 - SN3936; ConvF(7.07, 7.07, 7.07); Calibrated: 7/26/2016;
- Sensor-Surface: 2.5mm (Mechanical Surface Detection)
- Phantom: ELI v5.0 (A); Type: QDOVA001BB; Serial: 1117

Rear/QPSK_PCC_RB 50,24/SCC_RB 1,49 ch 20850 Ant.C/Area Scan (23x9x1):

Measurement grid: dx=12mm, dy=12mm

Maximum value of SAR (measured) = 1.07 W/kg

Rear/QPSK_PCC_RB 50,24/SCC_RB 1,49 ch 20850 Ant.C/Zoom Scan (8x8x7)/Cube 0:

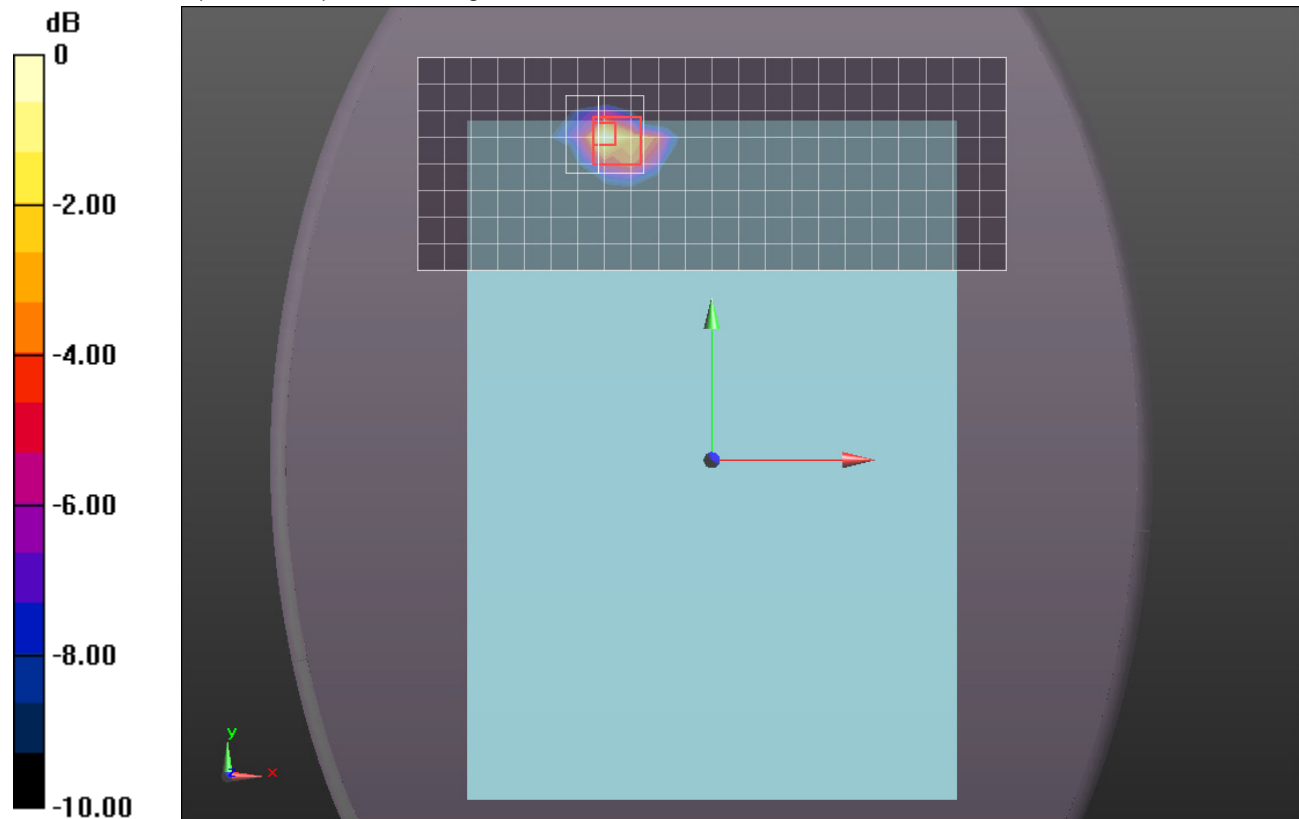
Measurement grid: dx=5mm, dy=5mm, dz=5mm

Reference Value = 22.70 V/m; Power Drift = -0.00 dB

Peak SAR (extrapolated) = 1.78 W/kg

SAR(1 g) = 0.669 W/kg; SAR(10 g) = 0.267 W/kg

Maximum value of SAR (measured) = 1.01 W/kg



0 dB = 1.01 W/kg = 0.04 dBW/kg

LTE-2CA Band 41_Ant. D

Frequency: 2680 MHz; Duty Cycle: 1:1.59956; Room Ambient Temperature: 24.0°C; Liquid Temperature: 23.0°C
 Medium parameters used: $f = 2680 \text{ MHz}$; $\sigma = 2.307 \text{ S/m}$; $\epsilon_r = 52.534$; $\rho = 1000 \text{ kg/m}^3$

DASY5 Configuration:

- Area Scan Setting: Find Secondary Maximum Within: 2.0 dB and with a peak SAR value greater than 0.0012W/kg
- Electronics: DAE4 Sn1433; Calibrated: 3/17/2016
- Probe: EX3DV4 - SN3936; ConvF(7.07, 7.07, 7.07); Calibrated: 7/26/2016;
- Sensor-Surface: 2.5mm (Mechanical Surface Detection (Locations From Previous Scan Used)), Sensor-Surface: 2.5mm (Mechanical Surface Detection)
- Phantom: ELI v5.0 (A); Type: QDOVA001BB; Serial: 1117

Rear/QPSK_PCC_RB 1,49/SCC_50/24_ch 41490/Area Scan (13x11x1): Measurement grid:

$dx=12\text{mm}$, $dy=12\text{mm}$

Maximum value of SAR (measured) = 1.51 W/kg

Rear/QPSK_PCC_RB 1,49/SCC_50/24_ch 41490/Zoom Scan (7x7x7)/Cube 0: Measurement grid:

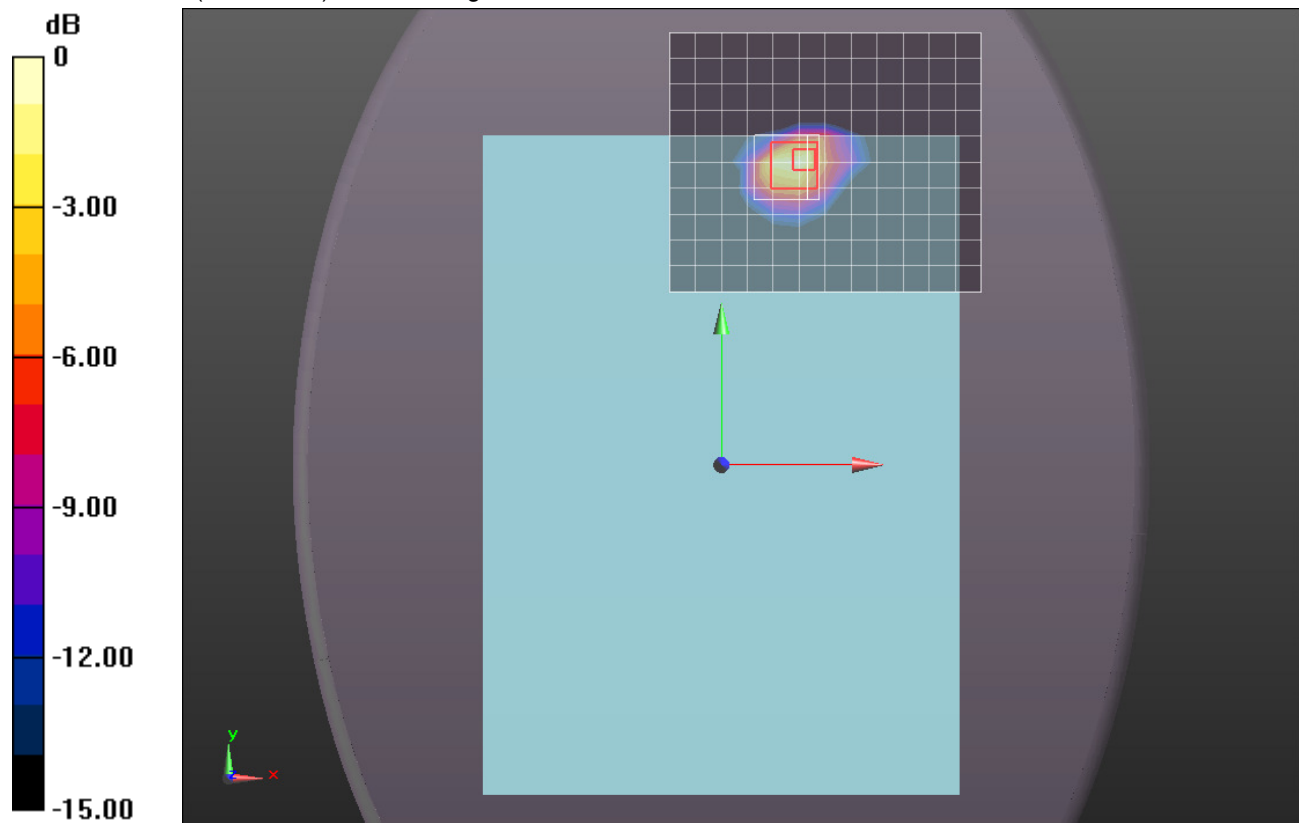
grid: $dx=5\text{mm}$, $dy=5\text{mm}$, $dz=5\text{mm}$

Reference Value = 26.18 V/m; Power Drift = -0.19 dB

Peak SAR (extrapolated) = 2.62 W/kg

SAR(1 g) = 1.06 W/kg; SAR(10 g) = 0.445 W/kg

Maximum value of SAR (measured) = 1.68 W/kg



0 dB = 1.68 W/kg = 2.25 dBW/kg

Wi-Fi 2.4GHz_Antenna B

Frequency: 2462 MHz; Duty Cycle: 1:1; Room Ambient Temperature: 24.0°C; Liquid Temperature: 23.0°C
 Medium parameters used (interpolated): $f = 2462 \text{ MHz}$; $\sigma = 1.967 \text{ S/m}$; $\epsilon_r = 51.263$; $\rho = 1000 \text{ kg/m}^3$

DASY5 Configuration:

- Area Scan Setting: Find Secondary Maximum Within: 2.0 dB and with a peak SAR value greater than 0.0012W/kg
- Electronics: DAE4 Sn1433; Calibrated: 3/17/2016
- Probe: EX3DV4 - SN3936; ConvF(7.3, 7.3, 7.3); Calibrated: 7/26/2016;
- Sensor-Surface: 2.5mm (Mechanical Surface Detection)
- Phantom: ELI v5.0 (A); Type: QDOVA001BB; Serial: 1117

Edge 3/802.11b_Ch 11/Area Scan (8x13x1): Measurement grid: dx=12mm, dy=12mm

[Info: Interpolated medium parameters used for SAR evaluation.](#)

Maximum value of SAR (measured) = 1.83 W/kg

Edge 3/802.11b_Ch 11/Zoom Scan (7x7x7)/Cube 0: Measurement grid: dx=5mm, dy=5mm, dz=5mm

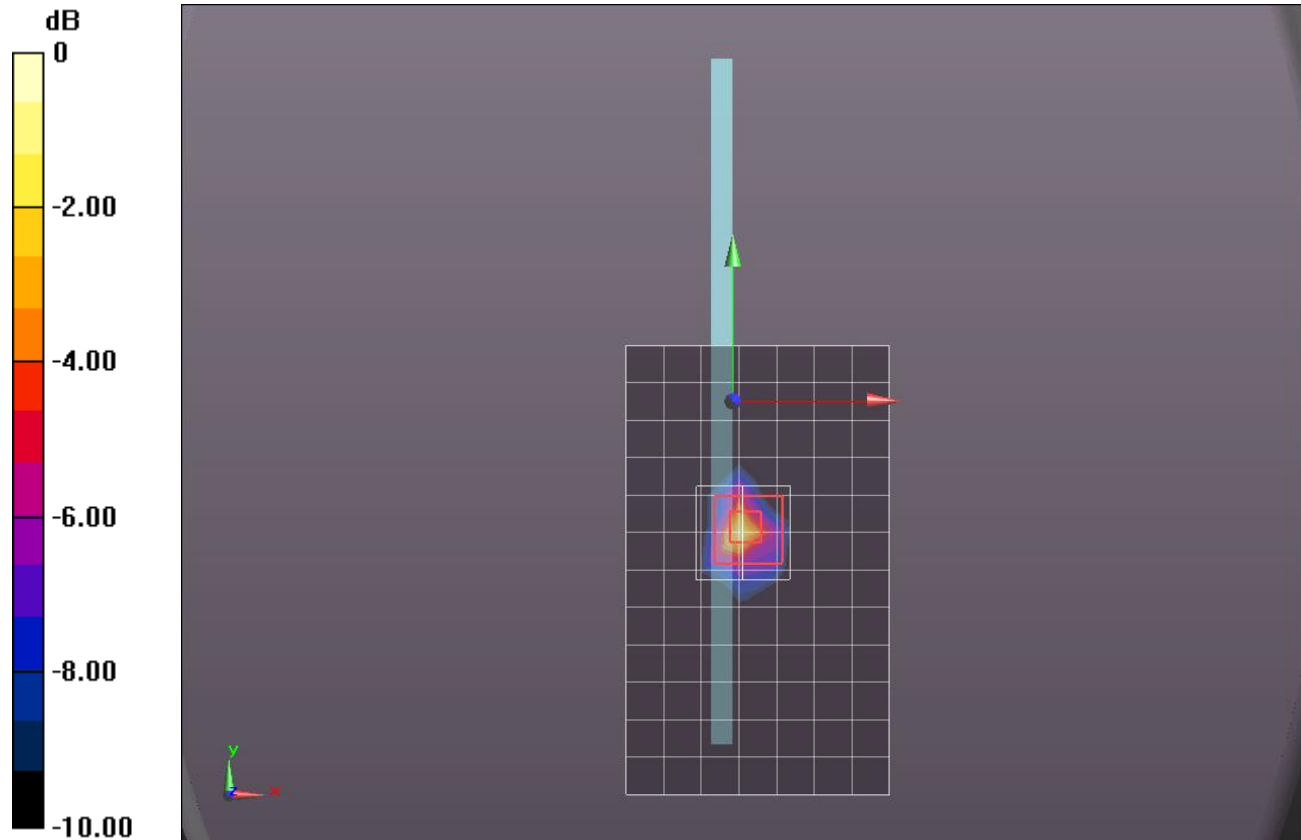
Reference Value = 30.67 V/m; Power Drift = -0.15 dB

Peak SAR (extrapolated) = 3.69 W/kg

SAR(1 g) = 1.17 W/kg; SAR(10 g) = 0.390 W/kg

[Info: Interpolated medium parameters used for SAR evaluation.](#)

Maximum value of SAR (measured) = 1.95 W/kg



0 dB = 1.95 W/kg = 2.90 dBW/kg

Wi-Fi 5.2GHz_MIMO

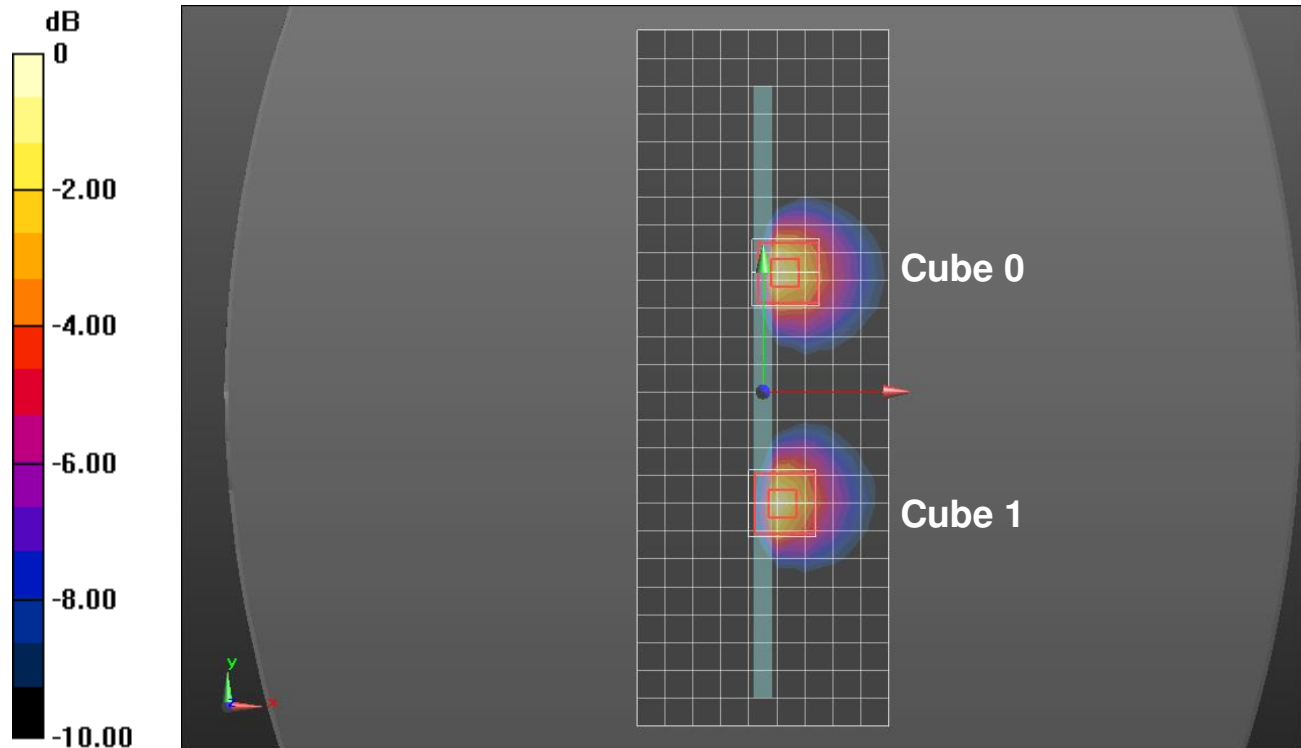
Frequency: 5230 MHz; Duty Cycle: 1:1; Room Ambient Temperature: 24.0°C; Liquid Temperature: 23.0°C
 Medium parameters used: $f = 5230 \text{ MHz}$; $\sigma = 5.481 \text{ S/m}$; $\epsilon_r = 47.27$; $\rho = 1000 \text{ kg/m}^3$
 DASY5 Configuration:

- Area Scan Setting: Find Secondary Maximum Within: 2.0 dB and with a peak SAR value greater than 0.0012W/kg
- Electronics: DAE4 Sn1434; Calibrated: 4/15/2016
- Probe: EX3DV4 - SN3929; ConvF(4.14, 4.14, 4.14); Calibrated: 3/22/2016;
- Sensor-Surface: 2mm (Mechanical Surface Detection)
- Phantom: ELI v5.0 A; Type: SM 000 T01 DA; Serial: TP:1247

Edge 3/802.11n HT40_Ch 46/Area Scan (10x26x1): Measurement grid: dx=10mm, dy=10mm
 Maximum value of SAR (measured) = 2.27 W/kg

Edge 3/802.11n HT40_Ch 46/Zoom Scan (Ant. A) (7x7x12)/Cube 0: Measurement grid: dx=4mm, dy=4mm, dz=2mm
 Reference Value = 20.38 V/m; Power Drift = -0.15 dB
 Peak SAR (extrapolated) = 4.64 W/kg
SAR(1 g) = 1.19 W/kg; SAR(10 g) = 0.406 W/kg
 Maximum value of SAR (measured) = 2.32 W/kg

Edge 3/802.11n HT40_Ch 46/Zoom Scan (Ant. B) (7x7x12)/Cube 1: Measurement grid: dx=4mm, dy=4mm, dz=2mm
 Reference Value = 20.38 V/m; Power Drift = -0.15 dB
 Peak SAR (extrapolated) = 4.59 W/kg
SAR(1 g) = 1.15 W/kg; SAR(10 g) = 0.379 W/kg



0 dB = 2.32 W/kg = 3.65 dBW/kg

Wi-Fi 5.6GHz_MIMO

Frequency: 5690 MHz; Duty Cycle: 1:1; Room Ambient Temperature: 24.0°C; Liquid Temperature: 23.0°C
 Medium parameters used: $f = 5690$ MHz; $\sigma = 6.082$ S/m; $\epsilon_r = 46.521$; $\rho = 1000$ kg/m³

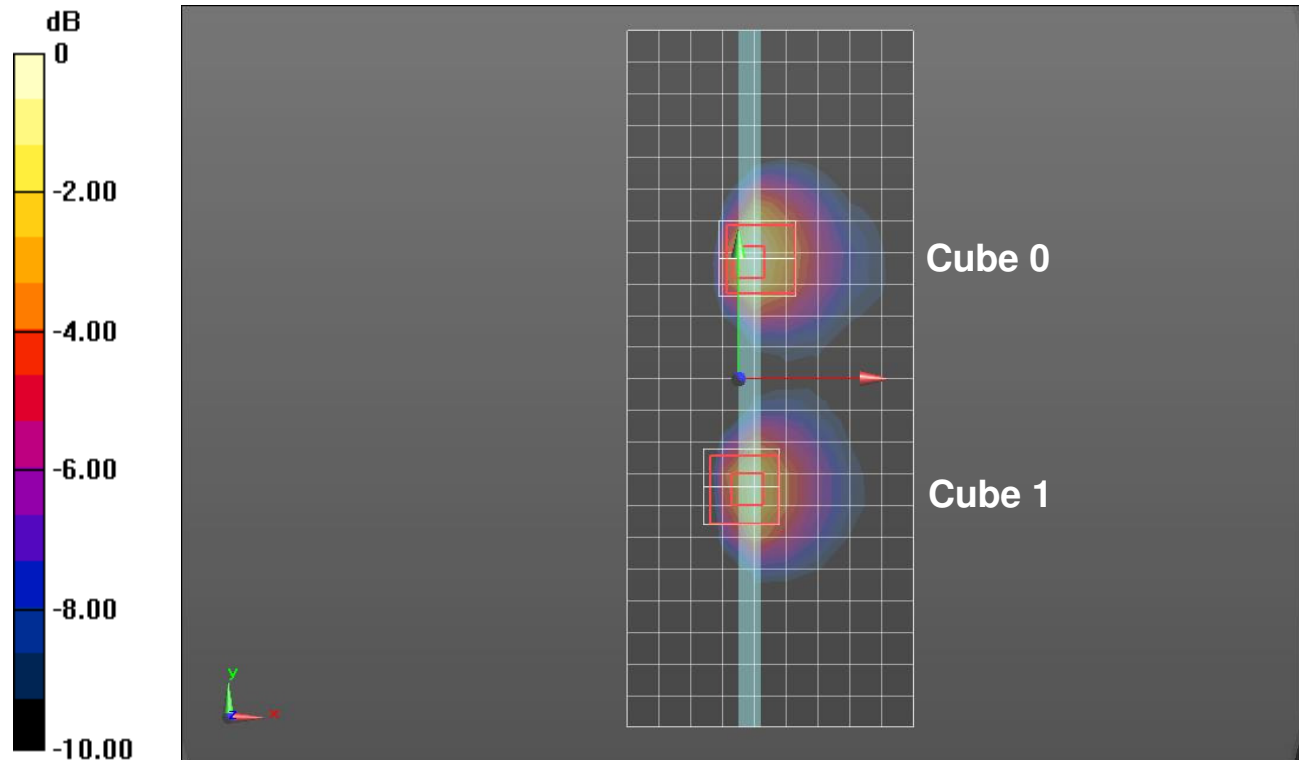
DASY5 Configuration:

- Area Scan Setting: Find Secondary Maximum Within: 2.0 dB and with a peak SAR value greater than 0.0012W/kg
- Electronics: DAE4 Sn1439; Calibrated: 7/25/2016
- Probe: EX3DV4 - SN3885; ConvF(3.73, 3.73, 3.73); Calibrated: 9/20/2016;
- Sensor-Surface: 2mm (Mechanical Surface Detection)
- Phantom: ELI v4.0 (B); Type: QDOVA001BB; Serial: 1099

Edge 3/802.11ac VHT80_Ch 138/Area Scan (10x23x1): Measurement grid: dx=10mm, dy=10mm
 Maximum value of SAR (measured) = 2.35 W/kg

Edge 3/802.11ac VHT80_Ch 138/Zoom Scan (Antenna A) (7x7x12)/Cube 0: Measurement grid:
 dx=4mm, dy=4mm, dz=2mm
 Reference Value = 19.20 V/m; Power Drift = 0.09 dB
 Peak SAR (extrapolated) = 4.95 W/kg
SAR(1 g) = 1.18 W/kg; SAR(10 g) = 0.397 W/kg
 Maximum value of SAR (measured) = 2.49 W/kg

Edge 3/802.11ac VHT80_Ch 138/Zoom Scan (Antenna B) (7x7x12)/Cube 1: Measurement grid:
 dx=4mm, dy=4mm, dz=2mm
 Reference Value = 19.20 V/m; Power Drift = 0.09 dB
 Peak SAR (extrapolated) = 4.11 W/kg
SAR(1 g) = 1.03 W/kg; SAR(10 g) = 0.322 W/kg
 Maximum value of SAR (measured) = 2.16 W/kg



0 dB = 2.16 W/kg = 3.34 dBW/kg

Wi-Fi 5.8GHz_Antenna A

Frequency: 5775 MHz; Duty Cycle: 1:1; Room Ambient Temperature: 24.0°C; Liquid Temperature: 23.0°C

Medium parameters used: $f = 5775 \text{ MHz}$; $\sigma = 6.068 \text{ S/m}$; $\epsilon_r = 48.06$; $\rho = 1000 \text{ kg/m}^3$

DASY5 Configuration:

- Area Scan Setting: Find Secondary Maximum Within: 2.0 dB and with a peak SAR value greater than 0.0012W/kg
- Electronics: DAE4 Sn1434; Calibrated: 4/15/2016
- Probe: EX3DV4 - SN3929; ConvF(3.72, 3.72, 3.72); Calibrated: 3/22/2016;
- Sensor-Surface: 2mm (Mechanical Surface Detection)
- Phantom: ELI v5.0 A; Type: SM 000 T01 DA; Serial: TP:1247

Edge 3/802.11ac VHT80_Ch 155/Area Scan (10x13x1): Measurement grid: dx=10mm, dy=10mm

Maximum value of SAR (measured) = 2.23 W/kg

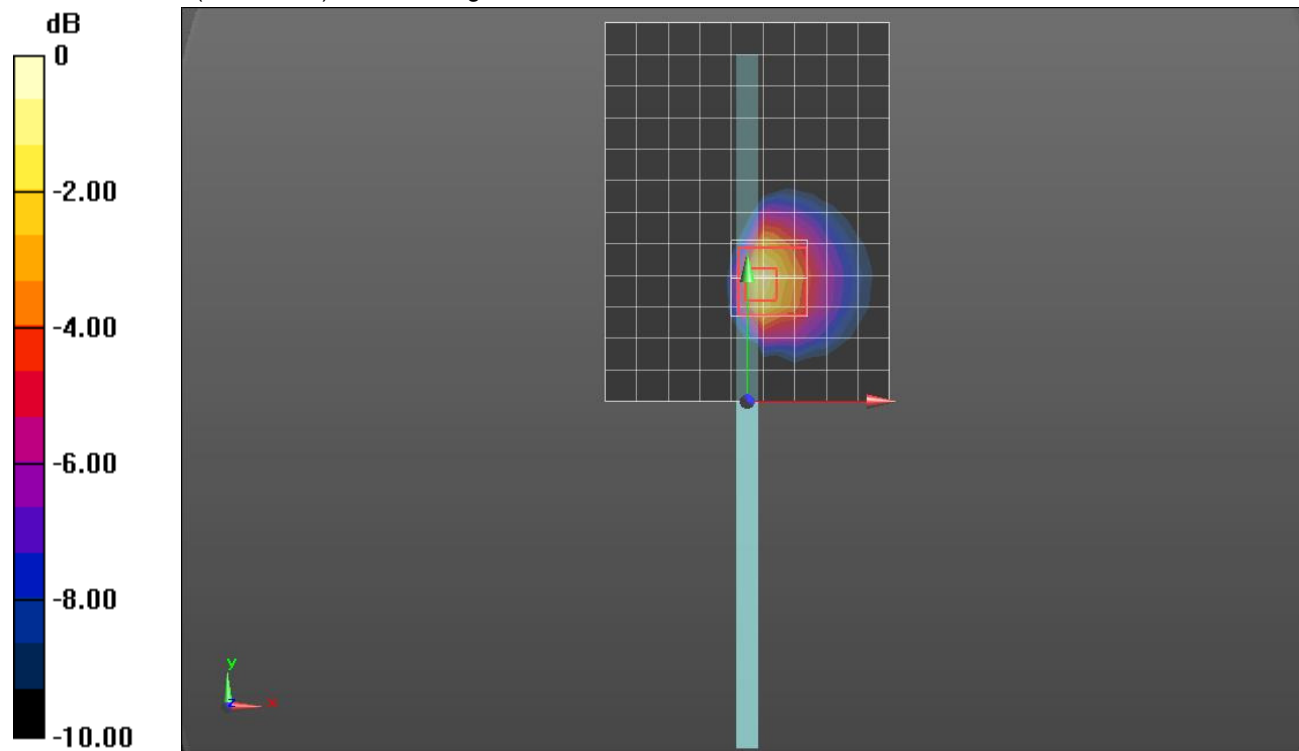
Edge 3/802.11ac VHT80_Ch 155/Zoom Scan (7x7x12)/Cube 0: Measurement grid: dx=4mm, dy=4mm, dz=2mm

Reference Value = 19.40 V/m; Power Drift = 0.15 dB

Peak SAR (extrapolated) = 5.12 W/kg

SAR(1 g) = 1.17 W/kg; SAR(10 g) = 0.388 W/kg

Maximum value of SAR (measured) = 2.43 W/kg



0 dB = 2.43 W/kg = 3.86 dBW/kg

Bluetooth

Frequency: 2441 MHz; Duty Cycle: 1:1; Room Ambient Temperature: 24.0°C; Liquid Temperature: 23.0°C
 Medium parameters used (interpolated): $f = 2441 \text{ MHz}$; $\sigma = 1.907 \text{ S/m}$; $\epsilon_r = 52.489$; $\rho = 1000 \text{ kg/m}^3$

DASY5 Configuration:

- Area Scan Setting: Find Secondary Maximum Within: 2.0 dB and with a peak SAR value greater than 0.0012W/kg
- Electronics: DAE4 Sn1433; Calibrated: 3/17/2016
- Probe: EX3DV4 - SN3936; ConvF(7.3, 7.3, 7.3); Calibrated: 7/26/2016;
- Sensor-Surface: 2.5mm (Mechanical Surface Detection)
- Phantom: ELI v5.0 (A); Type: QDOVA001BB; Serial: 1117

Edge 3/BT_GFSK_Ch 39/Area Scan (8x13x1): Measurement grid: dx=12mm, dy=12mm

[Info: Interpolated medium parameters used for SAR evaluation.](#)

Maximum value of SAR (measured) = 1.72 W/kg

Edge 3/BT_GFSK_Ch 39/Zoom Scan (7x7x7)/Cube 0: Measurement grid: dx=5mm, dy=5mm, dz=5mm

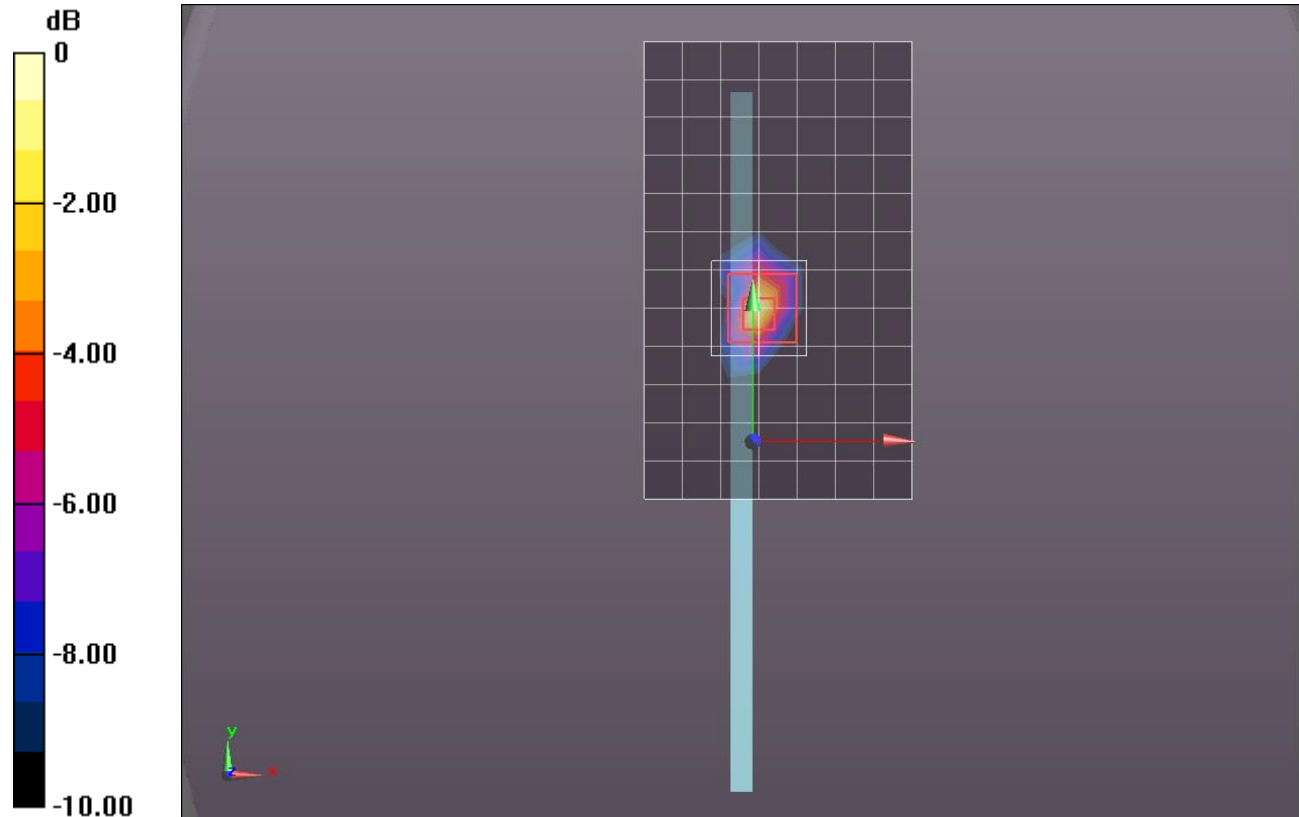
Reference Value = 30.24 V/m; Power Drift = 0.07 dB

Peak SAR (extrapolated) = 3.27 W/kg

SAR(1 g) = 1.03 W/kg; SAR(10 g) = 0.342 W/kg

[Info: Interpolated medium parameters used for SAR evaluation.](#)

Maximum value of SAR (measured) = 1.73 W/kg



0 dB = 1.73 W/kg = 2.38 dBW/kg