

WiFi 2.4 GHz

Frequency: 2437 MHz; Duty Cycle: 1:1; Room Ambient Temperature: 24.0°C; Liquid Temperature: 23.0°C
Medium parameters used (interpolated): $f = 2437$ MHz; $\sigma = 1.902$ mho/m; $\epsilon_r = 50.69$; $\rho = 1000$ kg/m³
DASY5 Configuration:

- Electronics: DAE4 Sn1261; Calibrated: 3/9/2012
- Probe: EX3DV4 - SN3757; ConvF(6.85, 6.85, 6.85); Calibrated: 3/24/2012
- Sensor-Surface: 2mm (Mechanical Surface Detection)
- Phantom: Back ELI v5.0; Type: QDOVA002AA; Serial: 1136

Rear/802.11b_ch 6/Area Scan (10x9x1): Measurement grid: dx=12mm, dy=12mm

[Info: Interpolated medium parameters used for SAR evaluation.](#)

Maximum value of SAR (measured) = 0.111 mW/g

Rear/802.11b_ch 6/Zoom Scan (7x7x7)/Cube 0: Measurement grid: dx=5mm, dy=5mm, dz=5mm

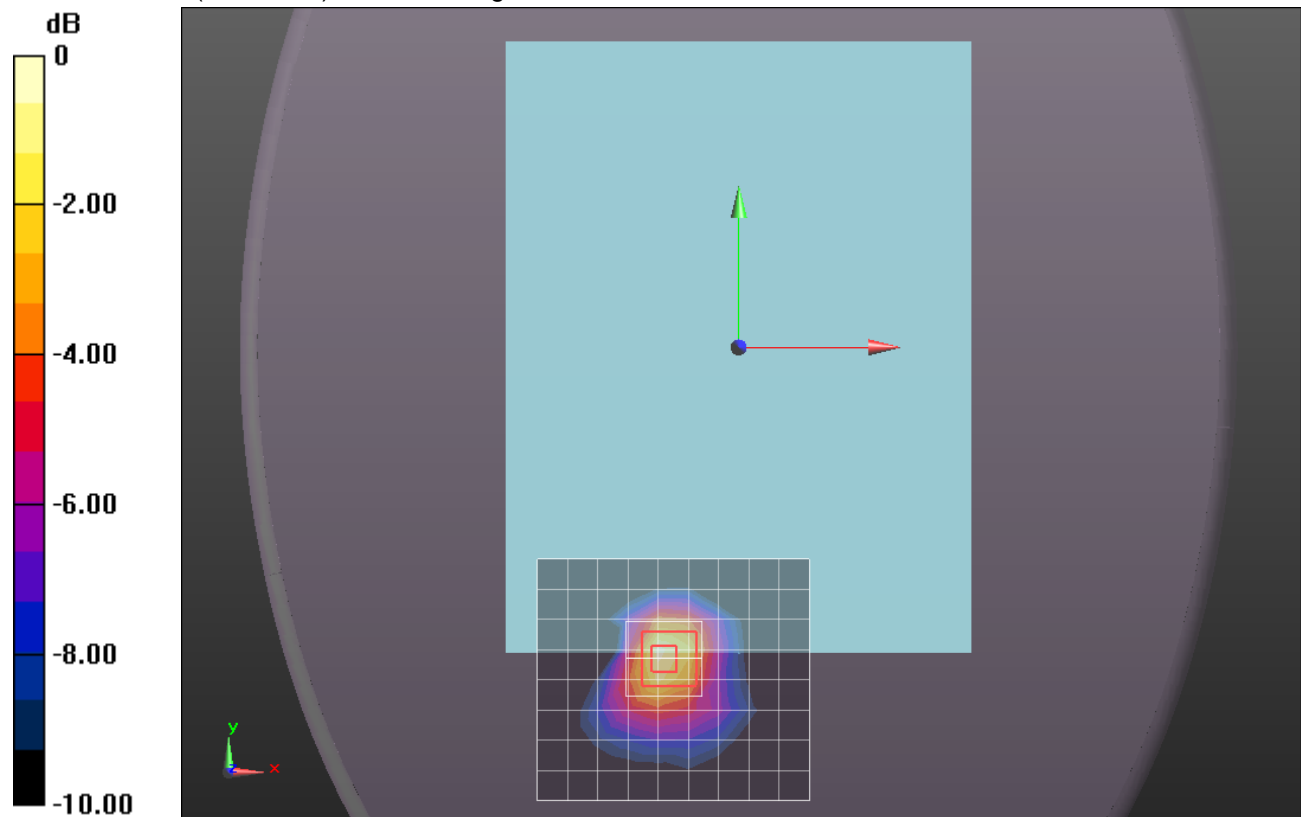
Reference Value = 7.716 V/m; Power Drift = 0.06 dB

Peak SAR (extrapolated) = 0.1650

SAR(1 g) = 0.083 mW/g; SAR(10 g) = 0.041 mW/g

[Info: Interpolated medium parameters used for SAR evaluation.](#)

Maximum value of SAR (measured) = 0.122 mW/g



0 dB = 0.120mW/g = -18.42 dB mW/g

WiFi 2.4 GHz

Frequency: 2437 MHz; Duty Cycle: 1:1; Room Ambient Temperature: 24.0°C; Liquid Temperature: 23.0°C
Medium parameters used (interpolated): $f = 2437$ MHz; $\sigma = 1.928$ mho/m; $\epsilon_r = 50.694$; $\rho = 1000$ kg/m³

DASY5 Configuration:

- Electronics: DAE4 Sn1261; Calibrated: 3/9/2012
- Probe: EX3DV4 - SN3757; ConvF(6.85, 6.85, 6.85); Calibrated: 3/24/2012
- Sensor-Surface: 2mm (Mechanical Surface Detection)
- Phantom: Back ELI v5.0; Type: QDOVA002AA; Serial: 1136

Edge 2/802.11b_ch 6/Area Scan (8x10x1): Measurement grid: dx=12mm, dy=12mm

[Info: Interpolated medium parameters used for SAR evaluation.](#)

Maximum value of SAR (measured) = 0.056 mW/g

Edge 2/802.11b_ch 6/Zoom Scan (7x7x7)/Cube 0: Measurement grid: dx=5mm, dy=5mm, dz=5mm

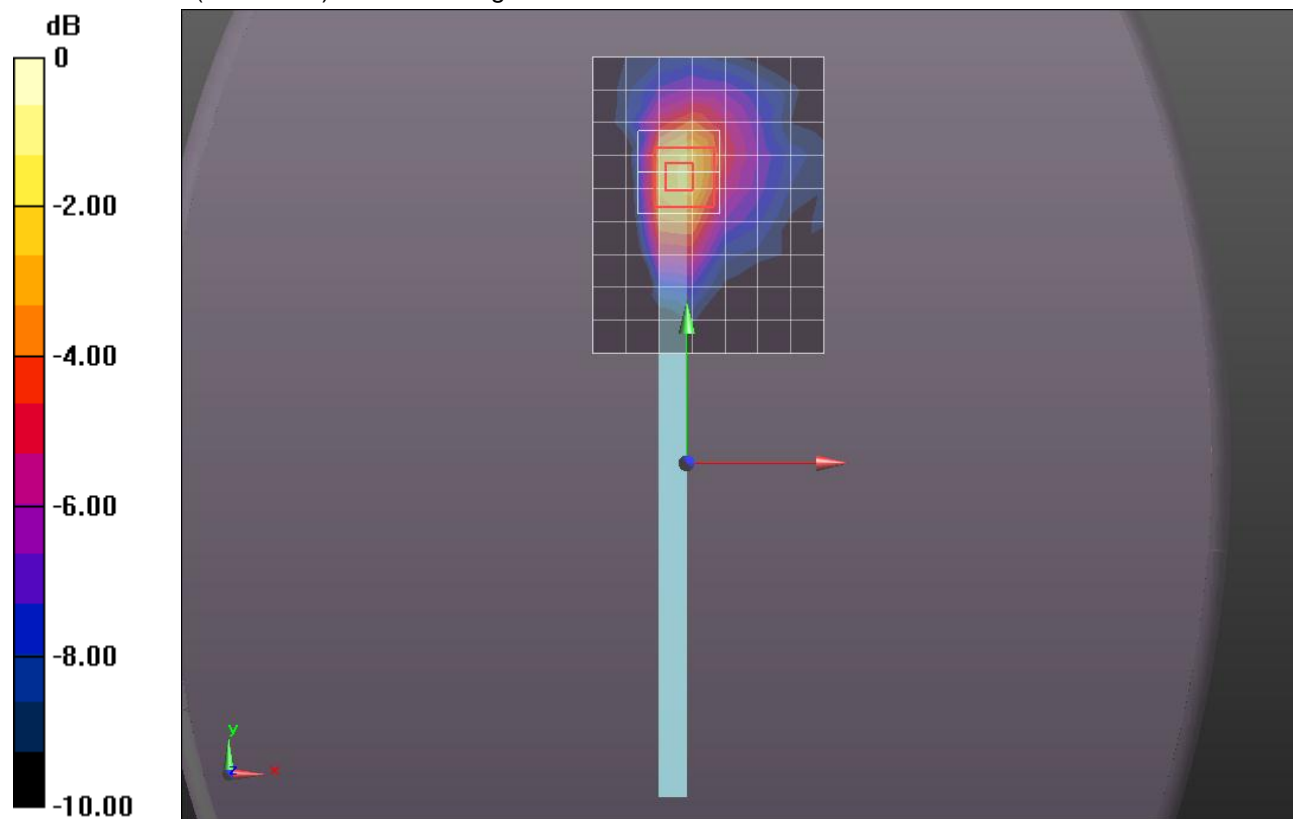
Reference Value = 6.144 V/m; Power Drift = 0.07 dB

Peak SAR (extrapolated) = 0.1110

SAR(1 g) = 0.048 mW/g; SAR(10 g) = 0.023 mW/g

[Info: Interpolated medium parameters used for SAR evaluation.](#)

Maximum value of SAR (measured) = 0.077 mW/g



0 dB = 0.080mW/g = -21.94 dB mW/g

WiFi 2.4 GHz

Frequency: 2412 MHz; Duty Cycle: 1:1; Room Ambient Temperature: 24.0°C; Liquid Temperature: 23.0°C
Medium parameters used (interpolated): $f = 2412$ MHz; $\sigma = 1.855$ mho/m; $\epsilon_r = 51.074$; $\rho = 1000$ kg/m³
DASY5 Configuration:

- Electronics: DAE4 Sn1261; Calibrated: 3/9/2012
- Probe: EX3DV4 - SN3757; ConvF(6.85, 6.85, 6.85); Calibrated: 3/24/2012
- Sensor-Surface: 2mm (Mechanical Surface Detection)
- Phantom: Back ELI v5.0; Type: QDOVA002AA; Serial: 1136

Edge 3/802.11b_ch 1/Area Scan (8x10x1): Measurement grid: dx=12mm, dy=12mm

[Info: Interpolated medium parameters used for SAR evaluation.](#)

Maximum value of SAR (measured) = 1.091 mW/g

Edge 3/802.11b_ch 1/Zoom Scan (7x7x7)/Cube 0: Measurement grid: dx=5mm, dy=5mm, dz=5mm

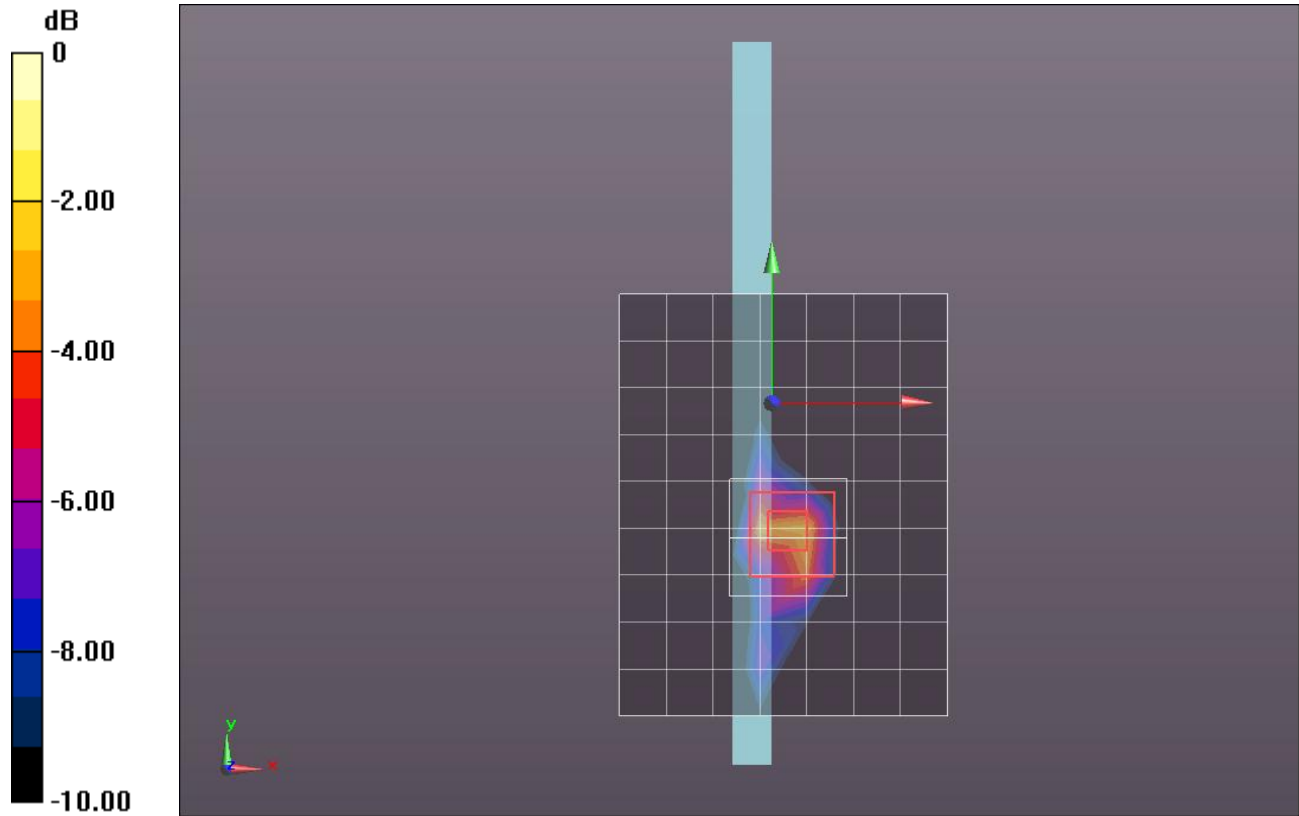
Reference Value = 29.557 V/m; Power Drift = -0.07 dB

Peak SAR (extrapolated) = 2.8910

SAR(1 g) = 0.963 mW/g; SAR(10 g) = 0.336 mW/g

[Info: Interpolated medium parameters used for SAR evaluation.](#)

Maximum value of SAR (measured) = 1.750 mW/g



0 dB = 1.750mW/g = 4.86 dB mW/g

WiFi 2.4 GHz

Frequency: 2437 MHz; Duty Cycle: 1:1; Room Ambient Temperature: 24.0°C; Liquid Temperature: 23.0°C
Medium parameters used (interpolated): $f = 2437$ MHz; $\sigma = 1.892$ mho/m; $\epsilon_r = 51.01$; $\rho = 1000$ kg/m³

DASY5 Configuration:

- Electronics: DAE4 Sn1261; Calibrated: 3/9/2012
- Probe: EX3DV4 - SN3757; ConvF(6.85, 6.85, 6.85); Calibrated: 3/24/2012
- Sensor-Surface: 2mm (Mechanical Surface Detection)
- Phantom: Back ELI v5.0; Type: QDOVA002AA; Serial: 1136

Edge 3/802.11b_ch 6/Area Scan (8x10x1): Measurement grid: dx=12mm, dy=12mm

[Info: Interpolated medium parameters used for SAR evaluation.](#)

Maximum value of SAR (measured) = 1.345 mW/g

Edge 3/802.11b_ch 6/Zoom Scan (7x7x7)/Cube 0: Measurement grid: dx=5mm, dy=5mm, dz=5mm

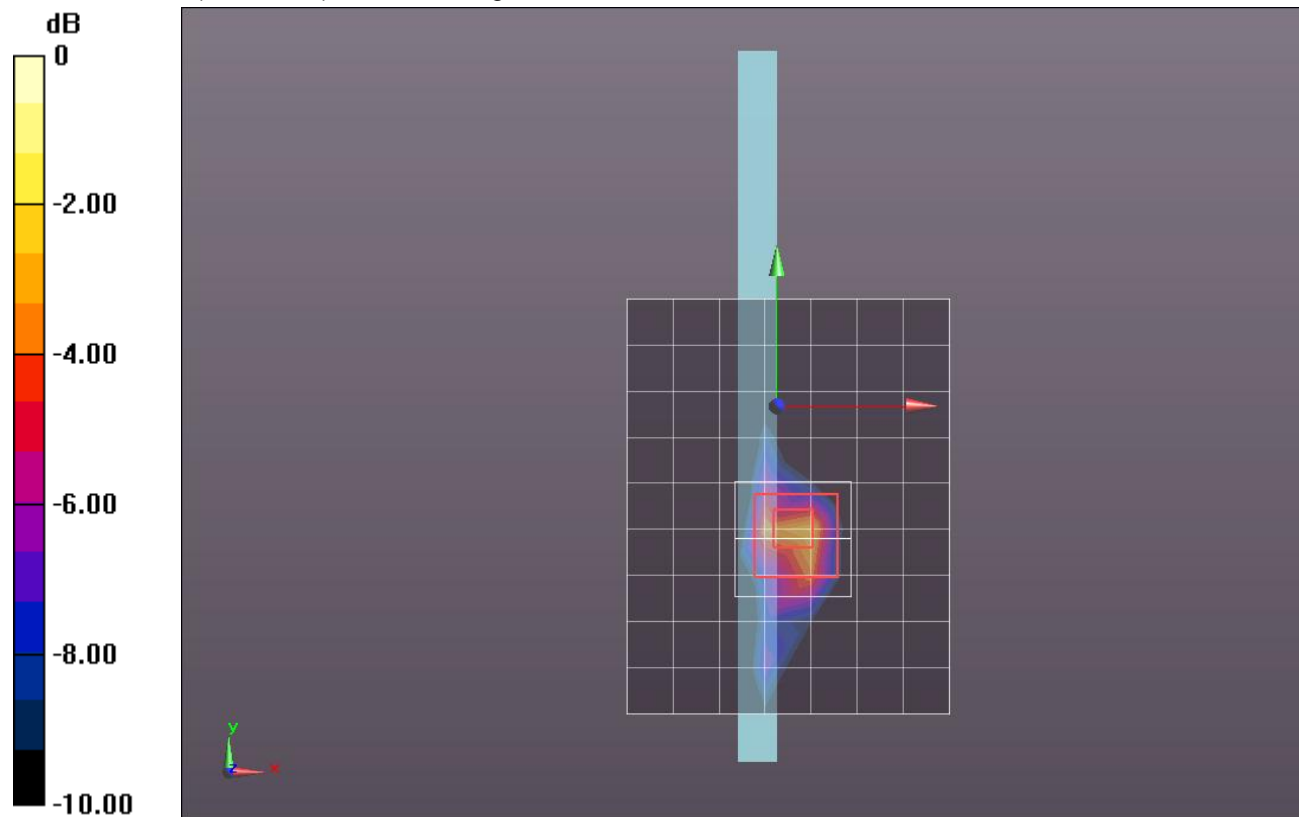
Reference Value = 31.123 V/m; Power Drift = 0.02 dB

Peak SAR (extrapolated) = 3.3510

SAR(1 g) = 1.12 mW/g; SAR(10 g) = 0.391 mW/g

[Info: Interpolated medium parameters used for SAR evaluation.](#)

Maximum value of SAR (measured) = 2.021 mW/g



0 dB = 2.020mW/g = 6.11 dB mW/g

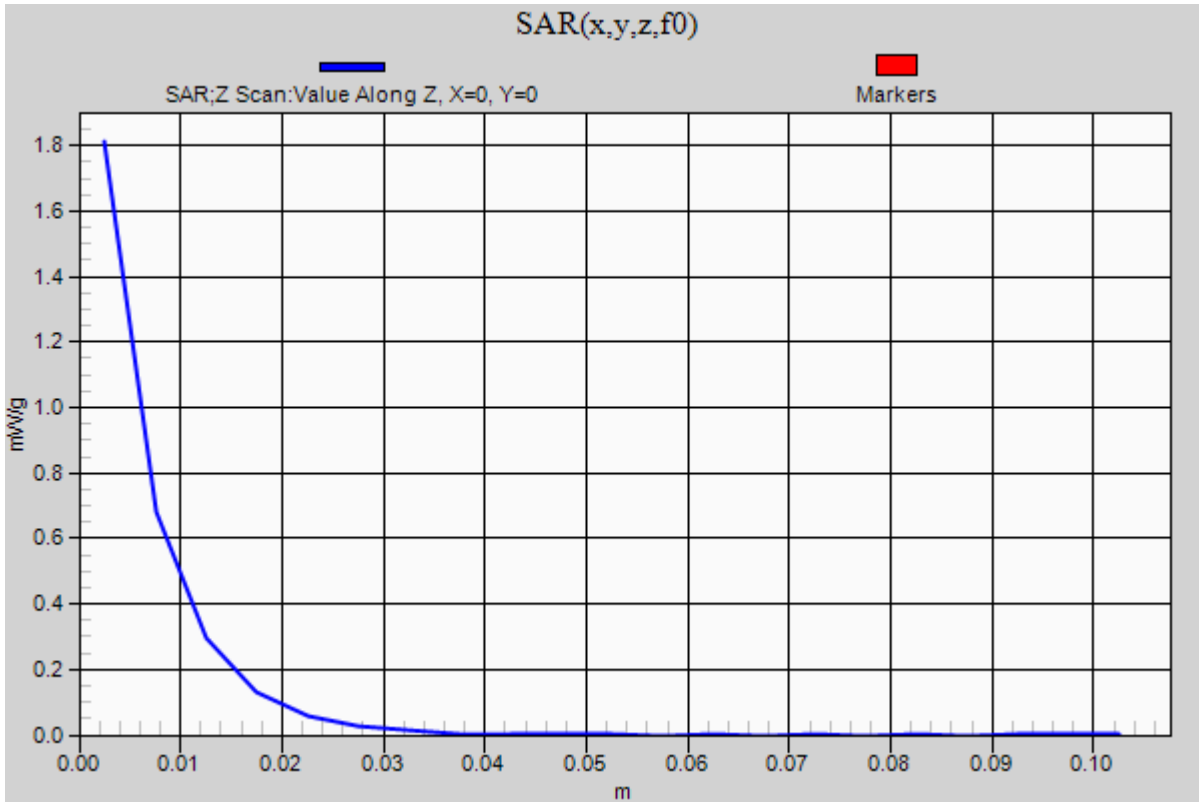
WiFi 2.4 GHz

Frequency: 2437 MHz; Duty Cycle: 1:1

Edge 3/802.11b_ch 6/Z Scan (1x1x21): Measurement grid: dx=20mm, dy=20mm, dz=5mm

Info: [Interpolated medium parameters used for SAR evaluation.](#)

Maximum value of SAR (measured) = 1.812 mW/g



WiFi 2.4 GHz

Frequency: 2462 MHz; Duty Cycle: 1:1; Room Ambient Temperature: 24.0°C; Liquid Temperature: 23.0°C
Medium parameters used (interpolated): $f = 2462$ MHz; $\sigma = 1.929$ mho/m; $\epsilon_r = 50.898$; $\rho = 1000$ kg/m³
DASY5 Configuration:

- Electronics: DAE4 Sn1261; Calibrated: 3/9/2012
- Probe: EX3DV4 - SN3757; ConvF(6.85, 6.85, 6.85); Calibrated: 3/24/2012
- Sensor-Surface: 2mm (Mechanical Surface Detection)
- Phantom: Back ELI v5.0; Type: QDOVA002AA; Serial: 1136

Edge 3/802.11b_ch 11/Area Scan (8x10x1): Measurement grid: dx=12mm, dy=12mm

[Info: Interpolated medium parameters used for SAR evaluation.](#)

Maximum value of SAR (measured) = 1.149 mW/g

Edge 3/802.11b_ch 11/Zoom Scan (7x7x7)/Cube 0: Measurement grid: dx=5mm, dy=5mm, dz=5mm

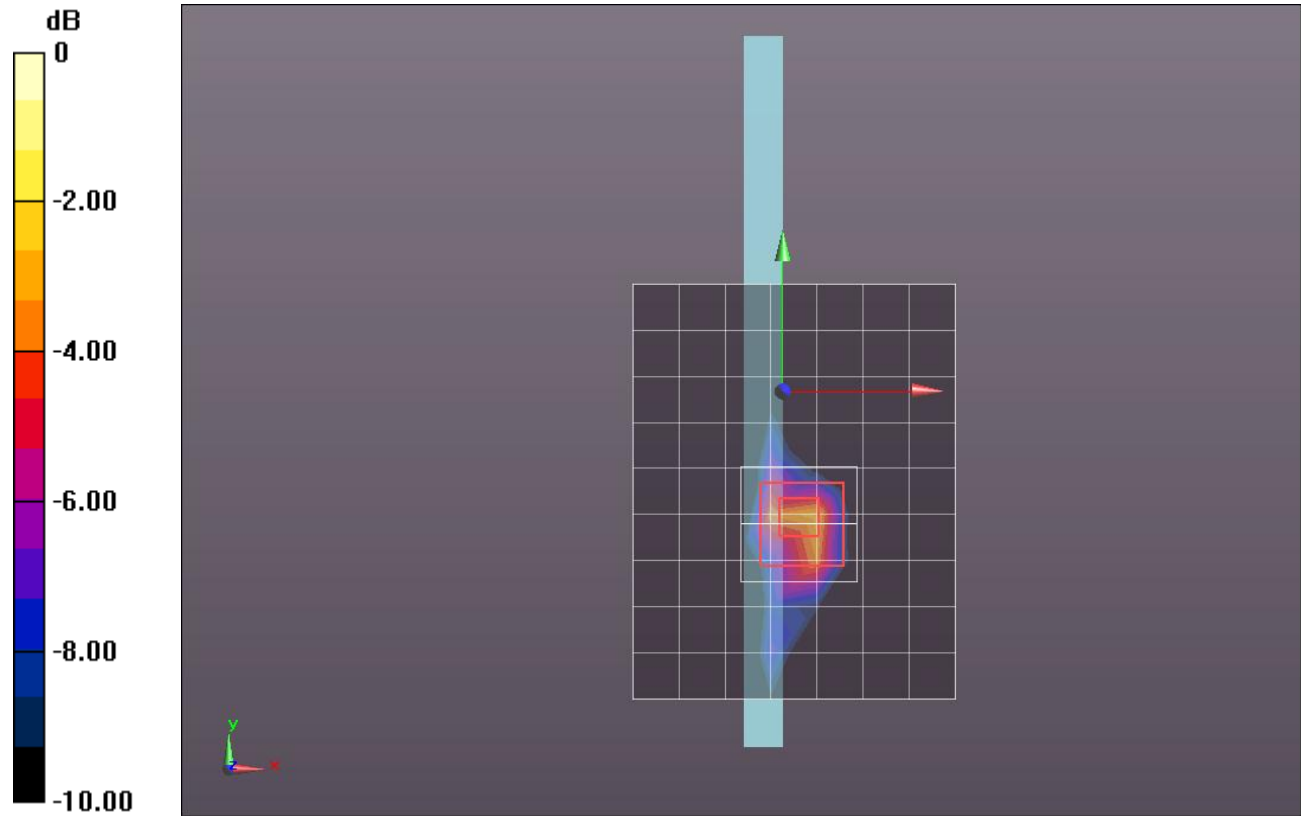
Reference Value = 30.227 V/m; Power Drift = -0.07 dB

Peak SAR (extrapolated) = 3.0310

SAR(1 g) = 1.02 mW/g; SAR(10 g) = 0.356 mW/g

[Info: Interpolated medium parameters used for SAR evaluation.](#)

Maximum value of SAR (measured) = 1.914 mW/g



0 dB = 1.910mW/g = 5.62 dB mW/g