

Bluetooth

Frequency: 2441 MHz; Duty Cycle: 1:1.24165; Room Ambient Temperature: 24.0°C; Liquid Temperature: 23.0°C
Medium parameters used (interpolated): $f = 2441$ MHz; $\sigma = 1.937$ mho/m; $\epsilon_r = 52.348$; $\rho = 1000$ kg/m³
DASY5 Configuration:

- Electronics: DAE4 Sn1261; Calibrated: 3/9/2012
- Probe: EX3DV4 - SN3757; ConvF(6.85, 6.85, 6.85); Calibrated: 3/24/2012
- Sensor-Surface: 2.5mm (Mechanical Surface Detection)
- Phantom: Back ELI v5.0; Type: QDOVA002AA; Serial: 1136

Rear/802.11b_ch 39/Area Scan (10x9x1): Measurement grid: dx=12mm, dy=12mm

[Info: Interpolated medium parameters used for SAR evaluation.](#)

Maximum value of SAR (measured) = 0.034 mW/g

Rear/802.11b_ch 39/Zoom Scan (7x7x7)/Cube 0: Measurement grid: dx=5mm, dy=5mm, dz=5mm

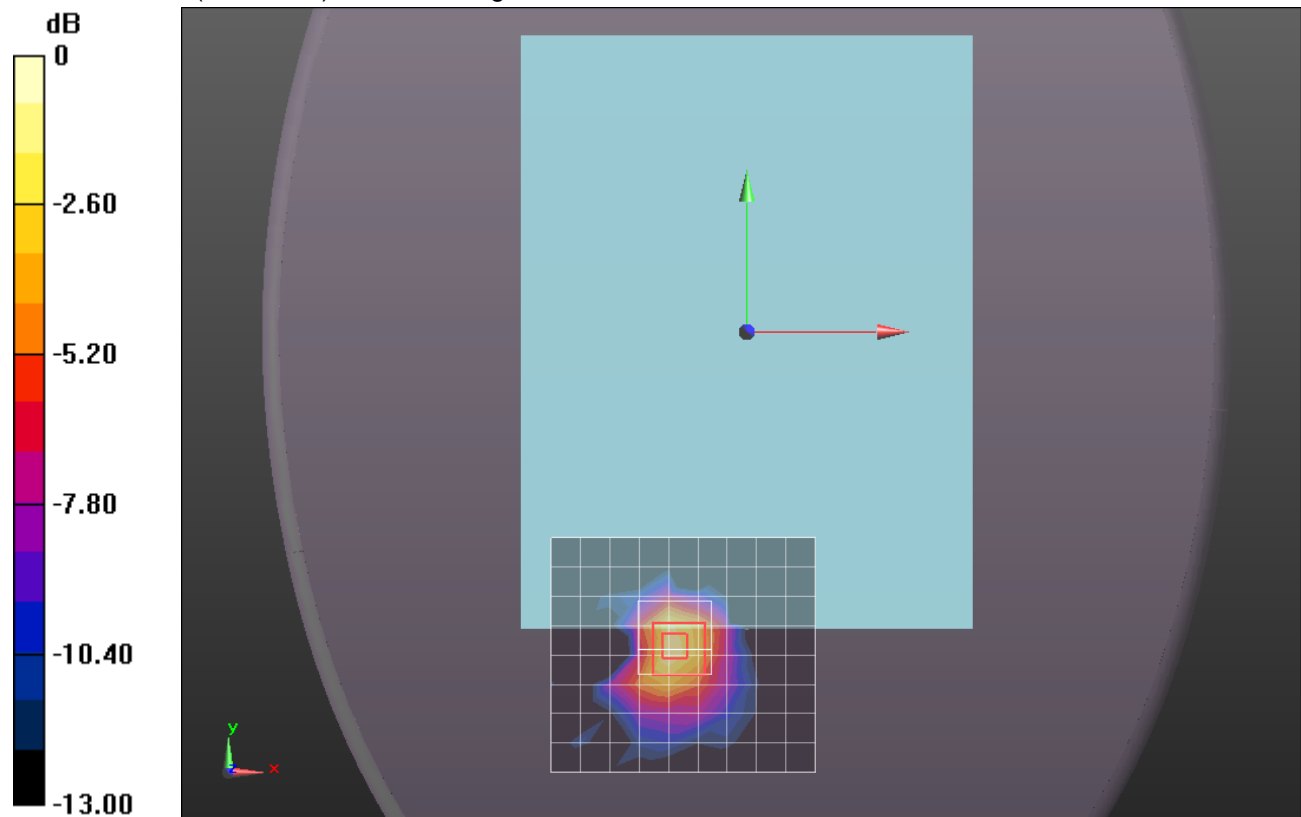
Reference Value = 4.466 V/m; Power Drift = 0.15 dB

Peak SAR (extrapolated) = 0.0550

SAR(1 g) = 0.028 mW/g; SAR(10 g) = 0.013 mW/g

[Info: Interpolated medium parameters used for SAR evaluation.](#)

Maximum value of SAR (measured) = 0.039 mW/g



0 dB = 0.040mW/g = -27.96 dB mW/g

Bluetooth

Frequency: 2441 MHz; Duty Cycle: 1:1.24165; Room Ambient Temperature: 24.0°C; Liquid Temperature: 23.0°C
Medium parameters used (interpolated): $f = 2441$ MHz; $\sigma = 1.937$ mho/m; $\epsilon_r = 52.348$; $\rho = 1000$ kg/m³

DASY5 Configuration:

- Electronics: DAE4 Sn1261; Calibrated: 3/9/2012
- Probe: EX3DV4 - SN3757; ConvF(6.85, 6.85, 6.85); Calibrated: 3/24/2012
- Sensor-Surface: 2.5mm (Mechanical Surface Detection)
- Phantom: Back ELI v5.0; Type: QDOVA002AA; Serial: 1136

Edge 2/802.11b_ch 39/Area Scan (8x10x1): Measurement grid: dx=12mm, dy=12mm

[Info: Interpolated medium parameters used for SAR evaluation.](#)

Maximum value of SAR (measured) = 0.016 mW/g

Edge 2/802.11b_ch 39/Zoom Scan (7x7x7)/Cube 0: Measurement grid: dx=5mm, dy=5mm, dz=5mm

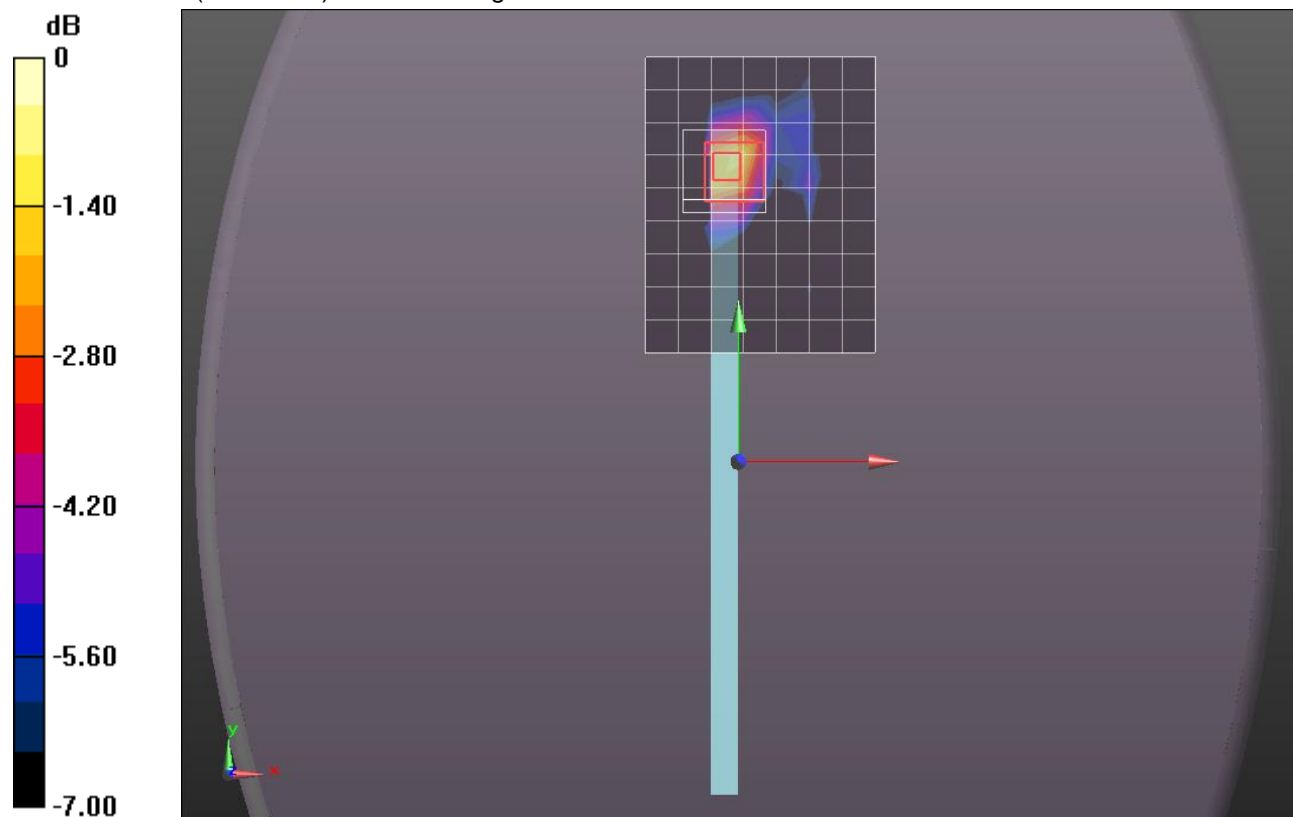
Reference Value = 3.530 V/m; Power Drift = 0.10 dB

Peak SAR (extrapolated) = 0.0290

SAR(1 g) = 0.014 mW/g; SAR(10 g) = 0.00508 mW/g

[Info: Interpolated medium parameters used for SAR evaluation.](#)

Maximum value of SAR (measured) = 0.022 mW/g



0 dB = 0.020mW/g = -33.98 dB mW/g

Bluetooth

Frequency: 2441 MHz; Duty Cycle: 1:1.24165; Room Ambient Temperature: 24.0°C; Liquid Temperature: 23.0°C
Medium parameters used (interpolated): $f = 2441$ MHz; $\sigma = 1.937$ mho/m; $\epsilon_r = 52.348$; $\rho = 1000$ kg/m³

DASY5 Configuration:

- Electronics: DAE4 Sn1261; Calibrated: 3/9/2012
- Probe: EX3DV4 - SN3757; ConvF(6.85, 6.85, 6.85); Calibrated: 3/24/2012
- Sensor-Surface: 2.5mm (Mechanical Surface Detection)
- Phantom: Back ELI v5.0; Type: QDOVA002AA; Serial: 1136

Edge 3/802.11b_ch 39/Area Scan (8x10x1): Measurement grid: dx=12mm, dy=12mm

[Info: Interpolated medium parameters used for SAR evaluation.](#)

Maximum value of SAR (measured) = 0.449 mW/g

Edge 3/802.11b_ch 39/Zoom Scan (7x7x7)/Cube 0: Measurement grid: dx=5mm, dy=5mm, dz=5mm

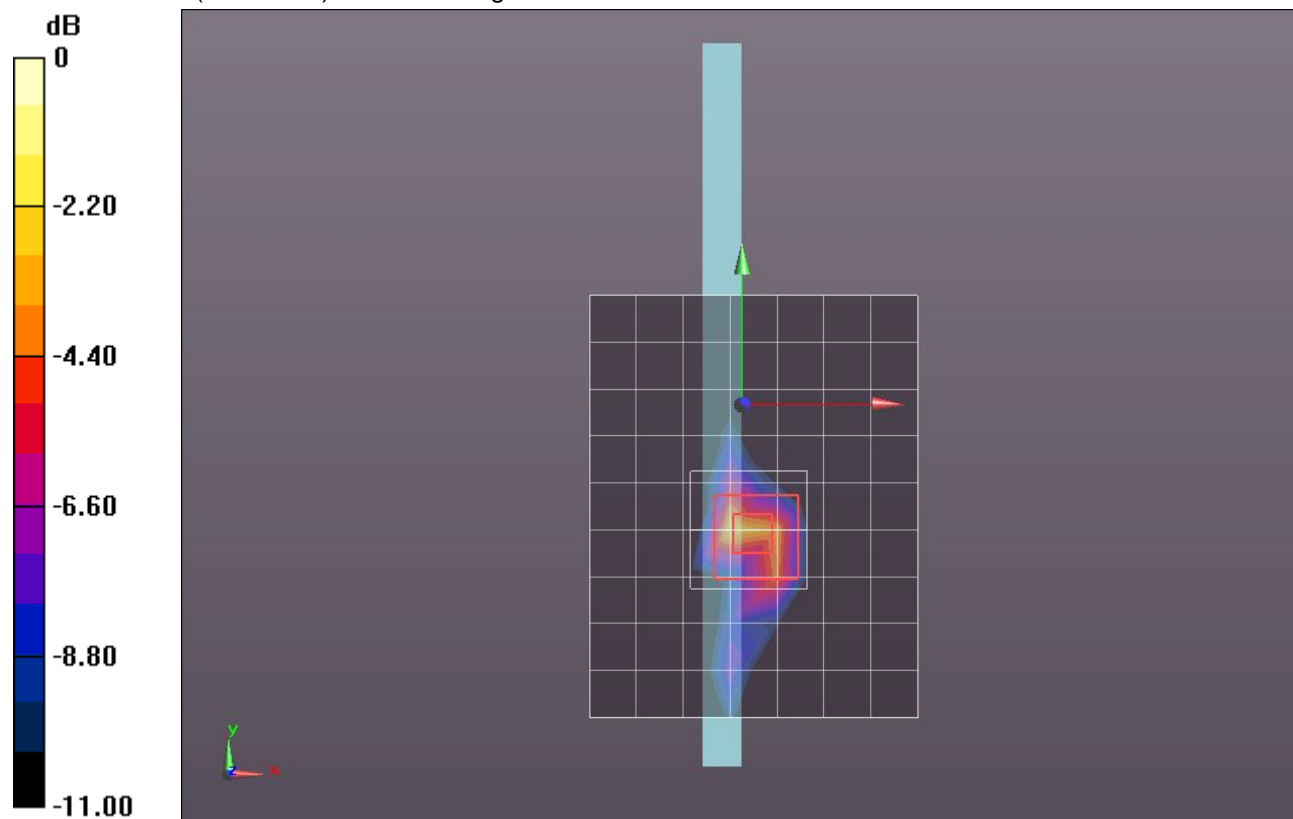
Reference Value = 19.151 V/m; Power Drift = 0.01 dB

Peak SAR (extrapolated) = 1.2200

SAR(1 g) = 0.407 mW/g; SAR(10 g) = 0.140 mW/g

[Info: Interpolated medium parameters used for SAR evaluation.](#)

Maximum value of SAR (measured) = 0.706 mW/g



0 dB = 0.710mW/g = -2.97 dB mW/g

Bluetooth

Frequency: 2441 MHz; Duty Cycle: 1:1.24165

Edge 3/802.11b_ch 39/Z Scan (1x1x21): Measurement grid: dx=20mm, dy=20mm, dz=5mm

Info: [Interpolated medium parameters used for SAR evaluation.](#)

Maximum value of SAR (measured) = 0.707 W/kg

