

## Bluetooth

Frequency: 2441 MHz; Duty Cycle: 1:1.24165; Room Ambient Temperature: 24.0°C; Liquid Temperature: 23.0°C  
Medium parameters used (interpolated):  $f = 2441$  MHz;  $\sigma = 1.932$  mho/m;  $\epsilon_r = 51.736$ ;  $\rho = 1000$  kg/m<sup>3</sup>

DASY5 Configuration:

- Electronics: DAE4 Sn1261; Calibrated: 3/9/2012
- Probe: EX3DV4 - SN3757; ConvF(6.85, 6.85, 6.85); Calibrated: 3/24/2012
- Sensor-Surface: 2mm (Mechanical Surface Detection)
- Phantom: Back ELI v5.0; Type: QDOVA002AA; Serial: 1136

**Rear/802.15 GFSK\_ch 39/Area Scan (10x8x1):** Measurement grid: dx=12mm, dy=12mm

[Info: Interpolated medium parameters used for SAR evaluation.](#)

Maximum value of SAR (measured) = 0.037 mW/g

**Rear/802.15 GFSK\_ch 39/Zoom Scan (7x7x7)/Cube 0:** Measurement grid: dx=5mm, dy=5mm, dz=5mm

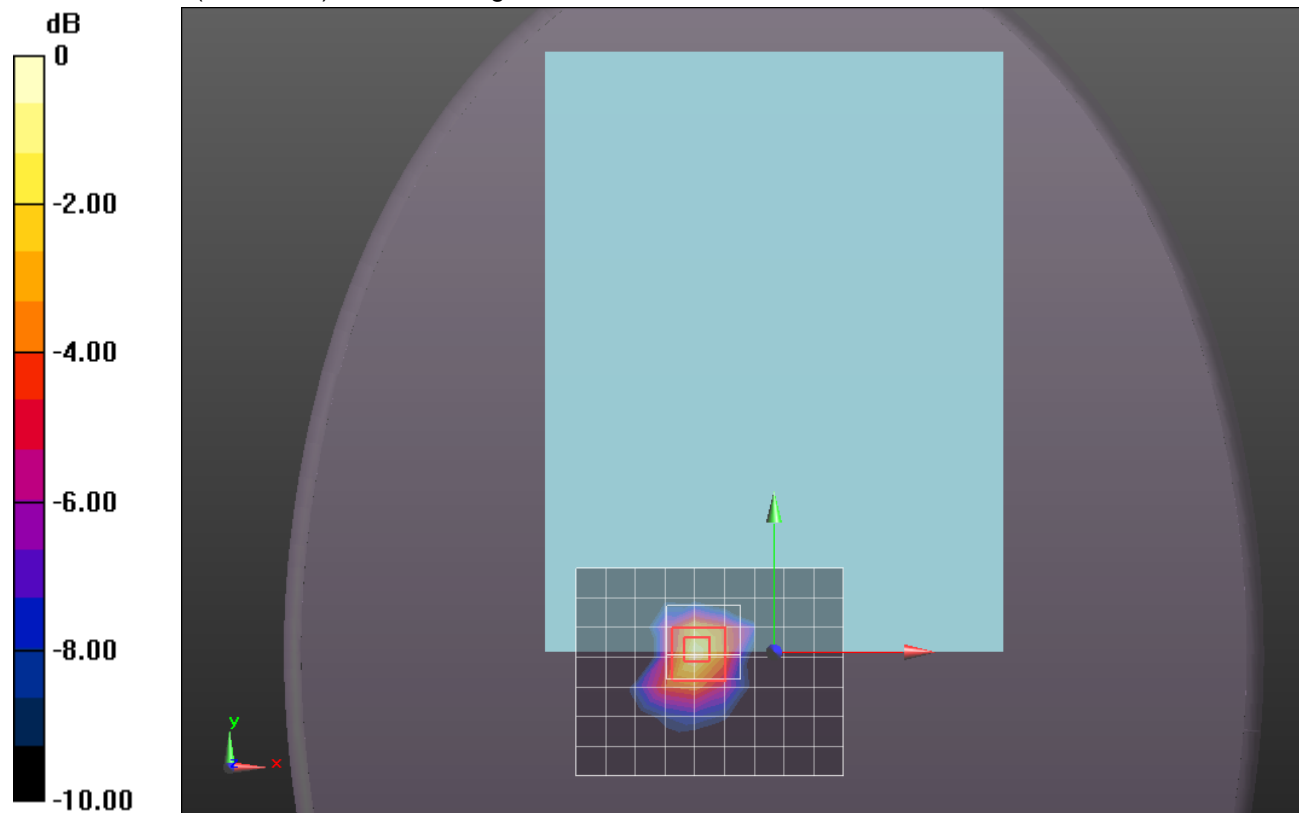
Reference Value = 4.206 V/m; Power Drift = 0.09 dB

Peak SAR (extrapolated) = 0.0510

**SAR(1 g) = 0.025 mW/g; SAR(10 g) = 0.012 mW/g**

[Info: Interpolated medium parameters used for SAR evaluation.](#)

Maximum value of SAR (measured) = 0.038 mW/g



0 dB = 0.040mW/g = -27.96 dB mW/g

## Bluetooth

Frequency: 2441 MHz; Duty Cycle: 1:1.24165; Room Ambient Temperature: 24.0°C; Liquid Temperature: 23.0°C  
Medium parameters used (interpolated):  $f = 2441$  MHz;  $\sigma = 1.932$  mho/m;  $\epsilon_r = 51.736$ ;  $\rho = 1000$  kg/m<sup>3</sup>

DASY5 Configuration:

- Electronics: DAE4 Sn1261; Calibrated: 3/9/2012
- Probe: EX3DV4 - SN3757; ConvF(6.85, 6.85, 6.85); Calibrated: 3/24/2012
- Sensor-Surface: 2mm (Mechanical Surface Detection)
- Phantom: Back ELI v5.0; Type: QDOVA002AA; Serial: 1136

**Edge 2/802.15 GFSK\_ch 39/Area Scan (8x10x1):** Measurement grid: dx=12mm, dy=12mm

[Info: Interpolated medium parameters used for SAR evaluation.](#)

Maximum value of SAR (measured) = 0.024 mW/g

**Edge 2/802.15 GFSK\_ch 39/Zoom Scan (7x7x7)/Cube 0:** Measurement grid: dx=5mm, dy=5mm, dz=5mm

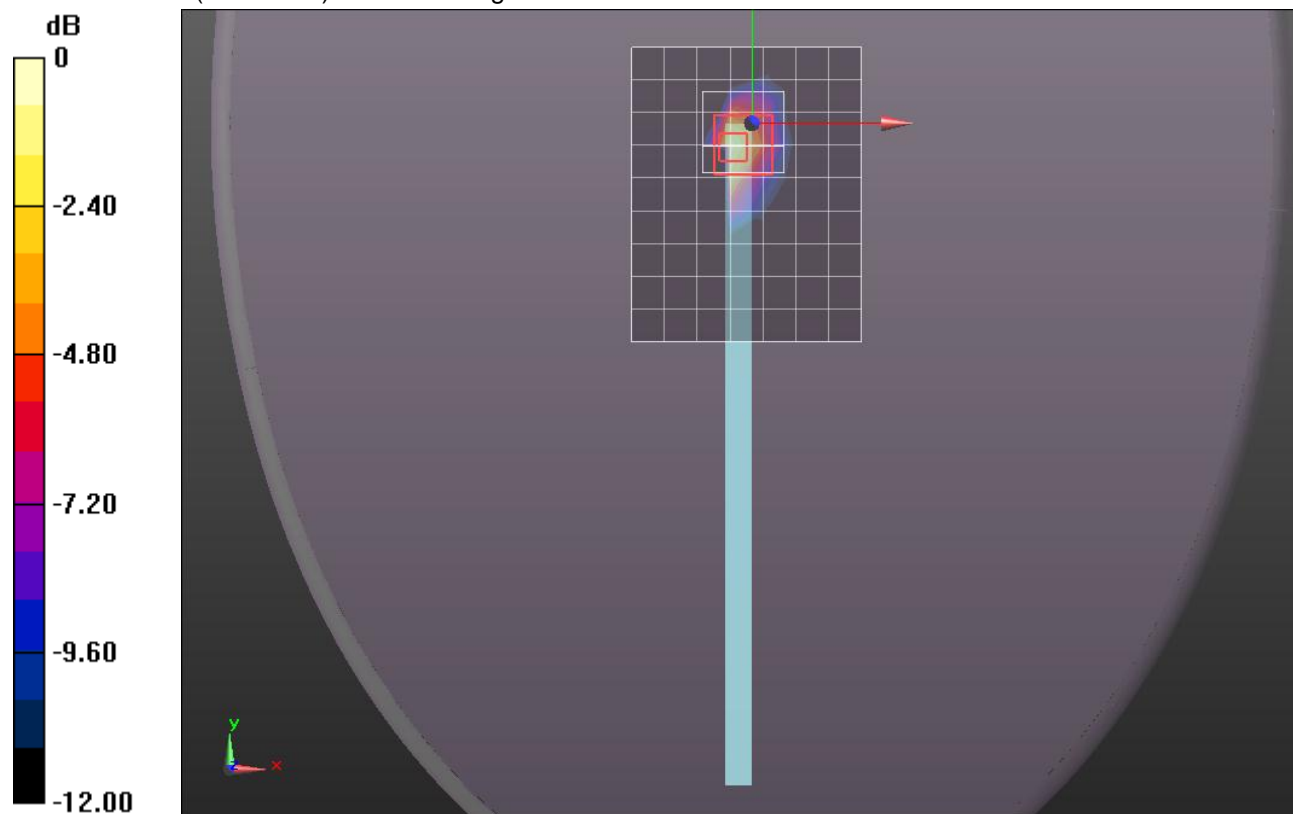
Reference Value = 3.498 V/m; Power Drift = 0.49 dB

Peak SAR (extrapolated) = 0.0400

**SAR(1 g) = 0.018 mW/g; SAR(10 g) = 0.00693 mW/g**

[Info: Interpolated medium parameters used for SAR evaluation.](#)

Maximum value of SAR (measured) = 0.027 mW/g



0 dB = 0.030mW/g = -30.46 dB mW/g

## Bluetooth

Frequency: 2441 MHz; Duty Cycle: 1:1.24165; Room Ambient Temperature: 24.0°C; Liquid Temperature: 23.0°C  
Medium parameters used (interpolated):  $f = 2441$  MHz;  $\sigma = 1.932$  mho/m;  $\epsilon_r = 51.736$ ;  $\rho = 1000$  kg/m<sup>3</sup>

DASY5 Configuration:

- Electronics: DAE4 Sn1261; Calibrated: 3/9/2012
- Probe: EX3DV4 - SN3757; ConvF(6.85, 6.85, 6.85); Calibrated: 3/24/2012
- Sensor-Surface: 2mm (Mechanical Surface Detection)
- Phantom: Back ELI v5.0; Type: QDOVA002AA; Serial: 1136

**Edge 3/802.15 GFSK\_ch 39/Area Scan (8x10x1):** Measurement grid: dx=12mm, dy=12mm

[Info: Interpolated medium parameters used for SAR evaluation.](#)

Maximum value of SAR (measured) = 0.469 mW/g

**Edge 3/802.15 GFSK\_ch 39/Zoom Scan (7x7x7)/Cube 0:** Measurement grid: dx=5mm, dy=5mm, dz=5mm

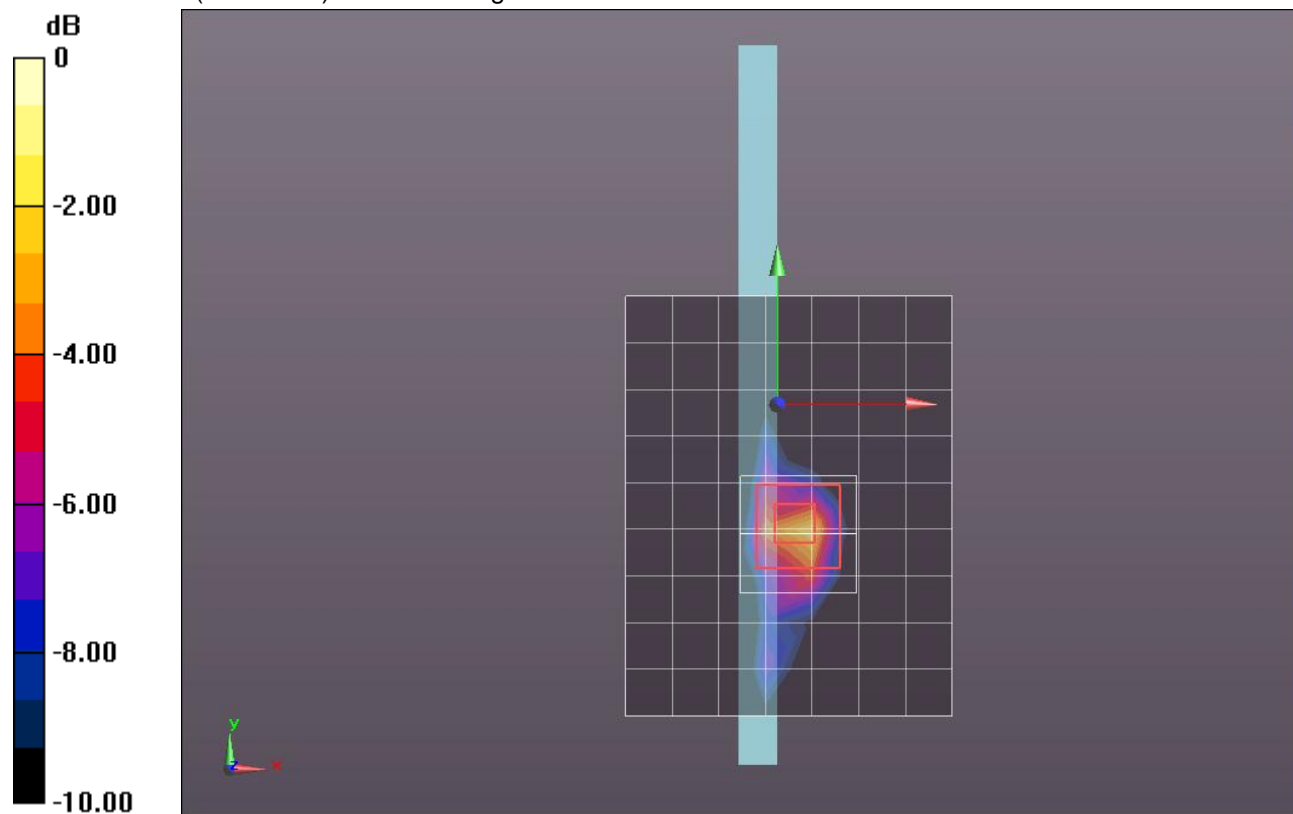
Reference Value = 16.331 V/m; Power Drift = -0.07 dB

Peak SAR (extrapolated) = 1.0770

**SAR(1 g) = 0.352 mW/g; SAR(10 g) = 0.121 mW/g**

[Info: Interpolated medium parameters used for SAR evaluation.](#)

Maximum value of SAR (measured) = 0.619 mW/g



0 dB = 0.620mW/g = -4.15 dB mW/g

## Bluetooth

Frequency: 2441 MHz; Duty Cycle: 1:1.24165

**Edge 3/802.15 GFSK\_ch 39/Z Scan (1x1x21):** Measurement grid: dx=20mm, dy=20mm, dz=5mm

Info: [Interpolated medium parameters used for SAR evaluation.](#)

Maximum value of SAR (measured) = 0.511 mW/g

