

## WiFi 2.4 GHz

Frequency: 2437 MHz; Duty Cycle: 1:1; Room Ambient Temperature: 24.0°C; Liquid Temperature: 23.0°C  
Medium parameters used (interpolated):  $f = 2437$  MHz;  $\sigma = 1.892$  mho/m;  $\epsilon_r = 51.01$ ;  $\rho = 1000$  kg/m<sup>3</sup>  
DASY5 Configuration:

- Electronics: DAE4 Sn1261; Calibrated: 3/9/2012
- Probe: EX3DV4 - SN3757; ConvF(6.85, 6.85, 6.85); Calibrated: 3/24/2012
- Sensor-Surface: 2mm (Mechanical Surface Detection)
- Phantom: Back ELI v5.0; Type: QDOVA002AA; Serial: 1136

**Rear/802.11b\_ch 6/Area Scan (10x8x1):** Measurement grid: dx=12mm, dy=12mm

[Info: Interpolated medium parameters used for SAR evaluation.](#)

Maximum value of SAR (measured) = 0.114 mW/g

**Rear/802.11b\_ch 6/Zoom Scan (7x7x7)/Cube 0:** Measurement grid: dx=5mm, dy=5mm, dz=5mm

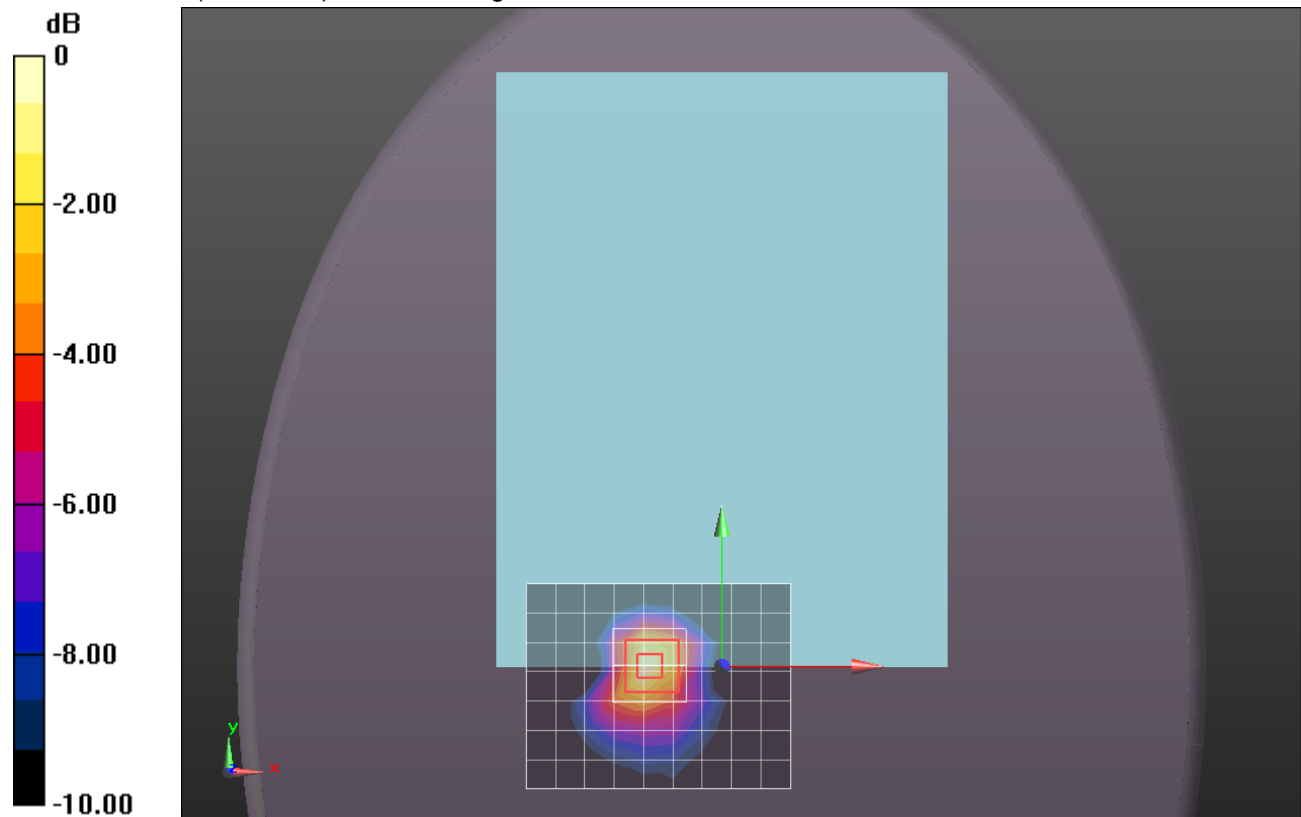
Reference Value = 7.815 V/m; Power Drift = 0.03 dB

Peak SAR (extrapolated) = 0.1650

**SAR(1 g) = 0.082 mW/g; SAR(10 g) = 0.041 mW/g**

[Info: Interpolated medium parameters used for SAR evaluation.](#)

Maximum value of SAR (measured) = 0.122 mW/g



0 dB = 0.120mW/g = -18.42 dB mW/g

## WiFi 2.4 GHz

Frequency: 2437 MHz; Duty Cycle: 1:1; Room Ambient Temperature: 24.0°C; Liquid Temperature: 23.0°C  
Medium parameters used (interpolated):  $f = 2437$  MHz;  $\sigma = 1.892$  mho/m;  $\epsilon_r = 51.01$ ;  $\rho = 1000$  kg/m<sup>3</sup>

DASY5 Configuration:

- Electronics: DAE4 Sn1261; Calibrated: 3/9/2012
- Probe: EX3DV4 - SN3757; ConvF(6.85, 6.85, 6.85); Calibrated: 3/24/2012
- Sensor-Surface: 2mm (Mechanical Surface Detection)
- Phantom: Back ELI v5.0; Type: QDOVA002AA; Serial: 1136

**Edge 2/802.11b\_ch 6/Area Scan (8x10x1):** Measurement grid: dx=12mm, dy=12mm

[Info: Interpolated medium parameters used for SAR evaluation.](#)

Maximum value of SAR (measured) = 0.058 mW/g

**Edge 2/802.11b\_ch 6/Zoom Scan (7x7x7)/Cube 0:** Measurement grid: dx=5mm, dy=5mm, dz=5mm

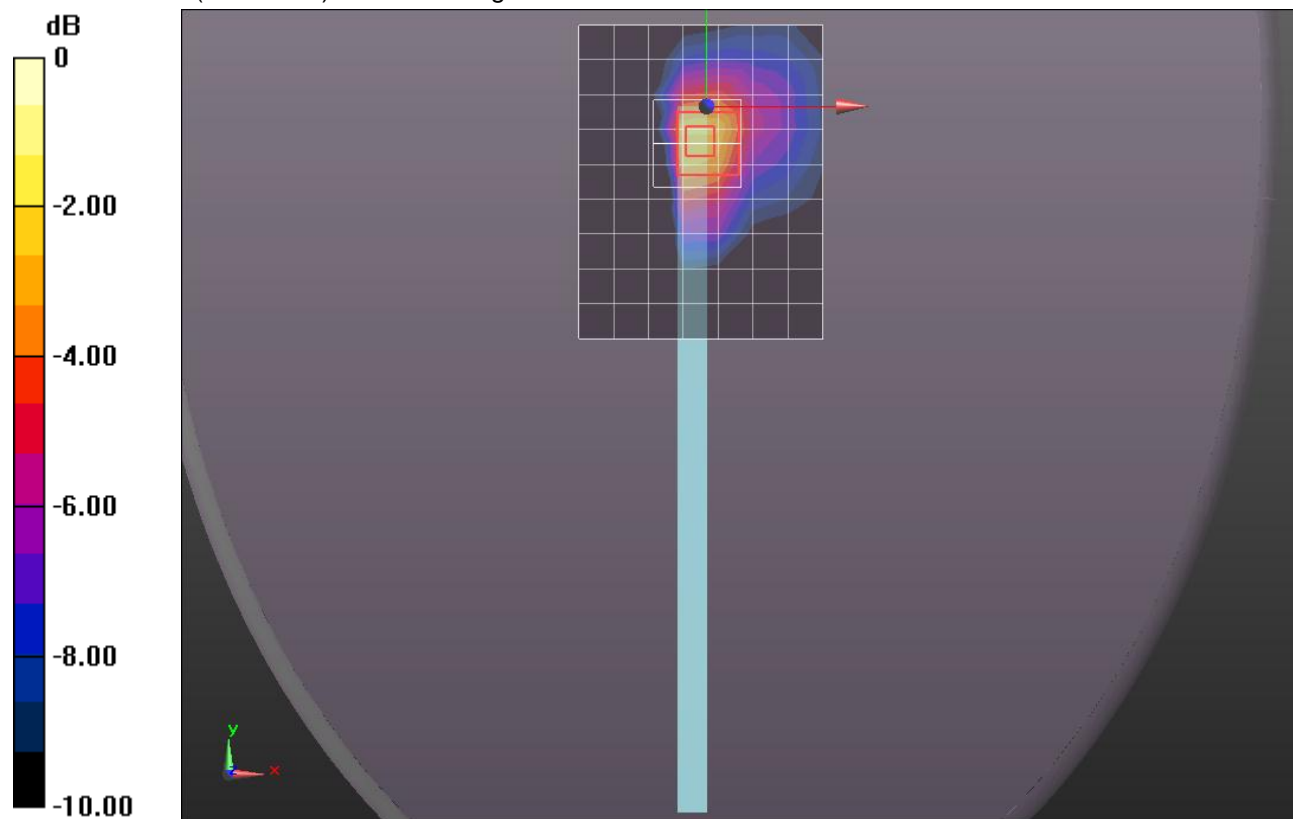
Reference Value = 6.686 V/m; Power Drift = 0.18 dB

Peak SAR (extrapolated) = 0.1400

**SAR(1 g) = 0.053 mW/g; SAR(10 g) = 0.024 mW/g**

[Info: Interpolated medium parameters used for SAR evaluation.](#)

Maximum value of SAR (measured) = 0.093 mW/g



0 dB = 0.090mW/g = -20.92 dB mW/g

## WiFi 2.4 GHz

Frequency: 2412 MHz; Duty Cycle: 1:1; Room Ambient Temperature: 24.0°C; Liquid Temperature: 23.0°C  
Medium parameters used (interpolated):  $f = 2412$  MHz;  $\sigma = 1.855$  mho/m;  $\epsilon_r = 51.074$ ;  $\rho = 1000$  kg/m<sup>3</sup>

DASY5 Configuration:

- Electronics: DAE4 Sn1261; Calibrated: 3/9/2012
- Probe: EX3DV4 - SN3757; ConvF(6.85, 6.85, 6.85); Calibrated: 3/24/2012
- Sensor-Surface: 2mm (Mechanical Surface Detection)
- Phantom: Back ELI v5.0; Type: QDOVA002AA; Serial: 1136

**Edge 3/802.11b\_ch 1/Area Scan (8x10x1):** Measurement grid: dx=12mm, dy=12mm

[Info: Interpolated medium parameters used for SAR evaluation.](#)

Maximum value of SAR (measured) = 0.996 mW/g

**Edge 3/802.11b\_ch 1/Zoom Scan (7x7x7)/Cube 0:** Measurement grid: dx=5mm, dy=5mm, dz=5mm

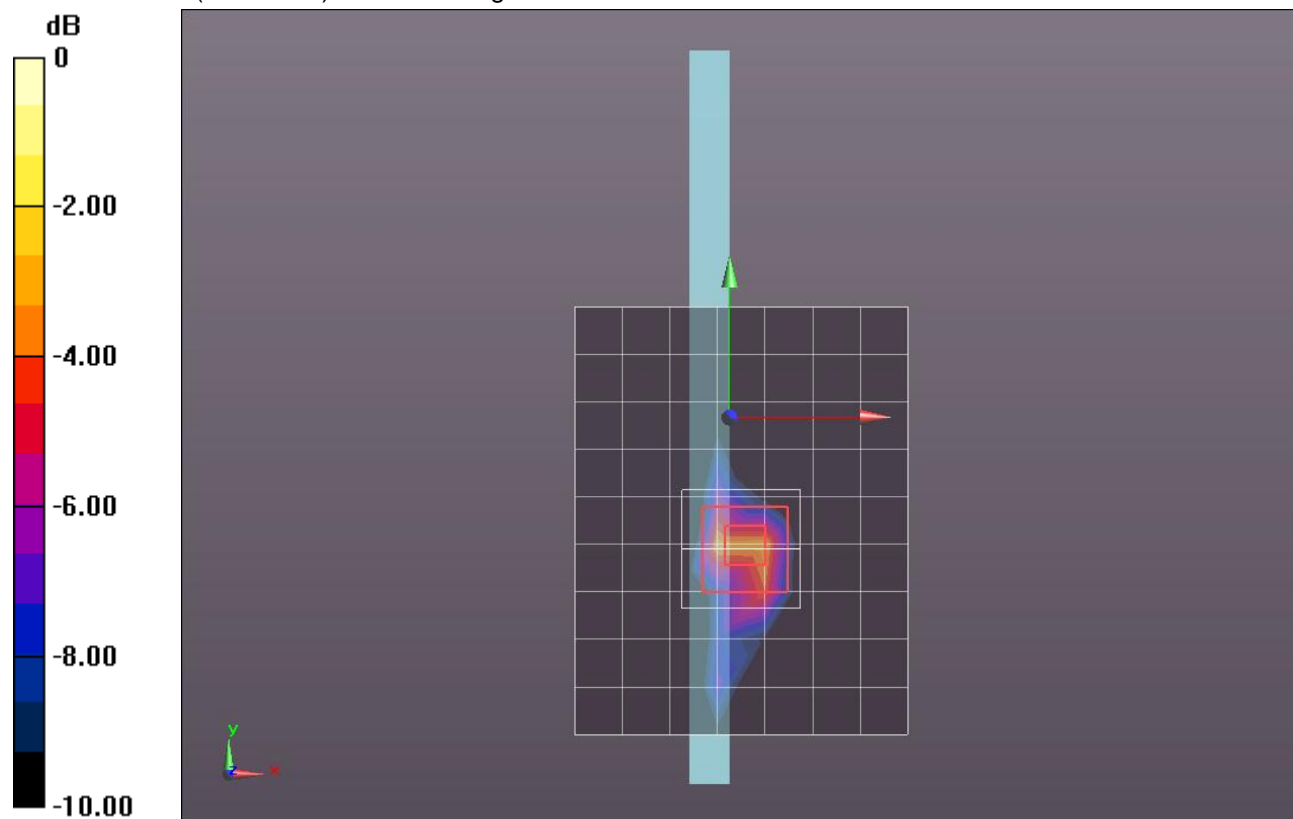
Reference Value = 30.008 V/m; Power Drift = -0.08 dB

Peak SAR (extrapolated) = 2.8680

**SAR(1 g) = 0.950 mW/g; SAR(10 g) = 0.328 mW/g**

[Info: Interpolated medium parameters used for SAR evaluation.](#)

Maximum value of SAR (measured) = 1.847 mW/g



0 dB = 1.850mW/g = 5.34 dB mW/g

## WiFi 2.4 GHz

Frequency: 2437 MHz; Duty Cycle: 1:1; Room Ambient Temperature: 24.0°C; Liquid Temperature: 23.0°C  
Medium parameters used (interpolated):  $f = 2437$  MHz;  $\sigma = 1.892$  mho/m;  $\epsilon_r = 51.01$ ;  $\rho = 1000$  kg/m<sup>3</sup>

DASY5 Configuration:

- Electronics: DAE4 Sn1261; Calibrated: 3/9/2012
- Probe: EX3DV4 - SN3757; ConvF(6.85, 6.85, 6.85); Calibrated: 3/24/2012
- Sensor-Surface: 2mm (Mechanical Surface Detection)
- Phantom: Back ELI v5.0; Type: QDOVA002AA; Serial: 1136

**Edge 3/802.11b\_ch 6/Area Scan (8x10x1):** Measurement grid: dx=12mm, dy=12mm

[Info: Interpolated medium parameters used for SAR evaluation.](#)

Maximum value of SAR (measured) = 1.303 mW/g

**Edge 3/802.11b\_ch 6/Zoom Scan (7x7x7)/Cube 0:** Measurement grid: dx=5mm, dy=5mm, dz=5mm

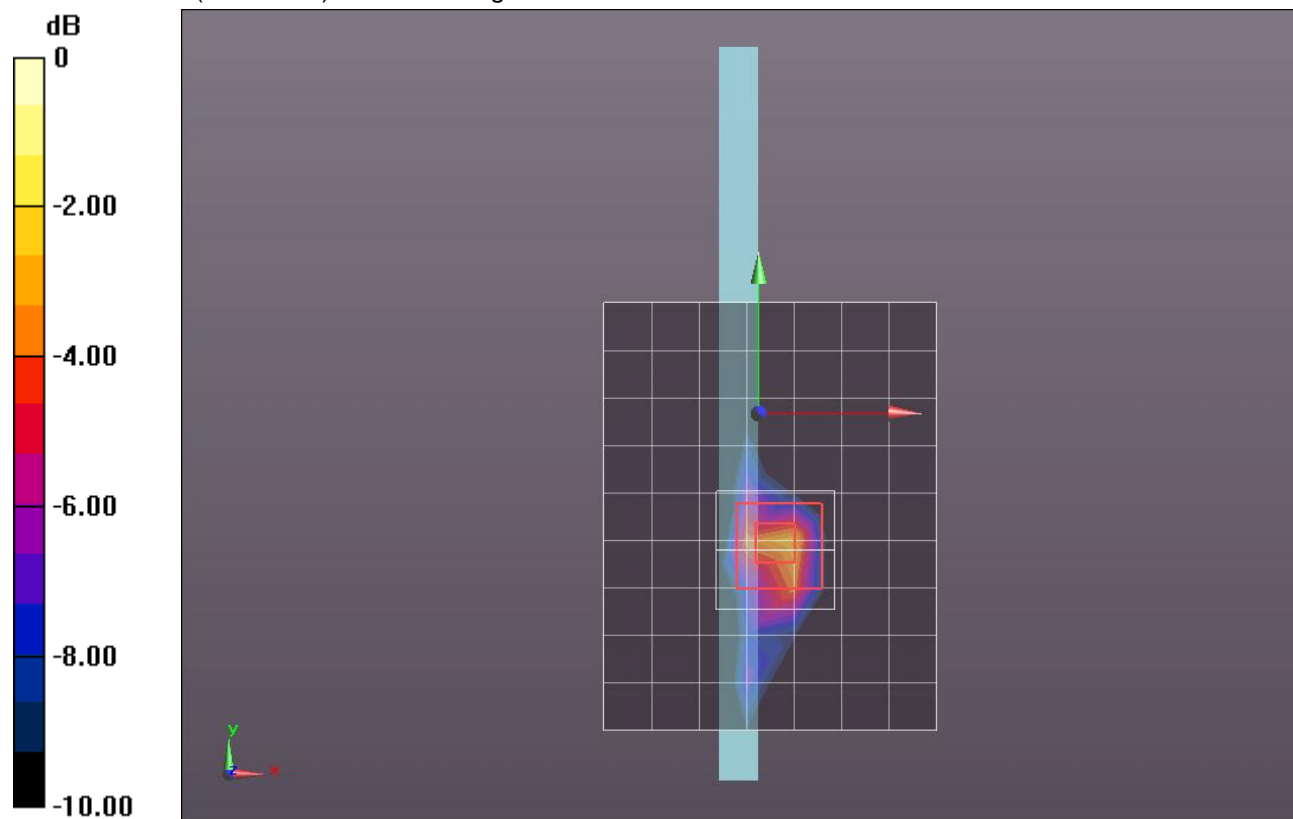
Reference Value = 31.414 V/m; Power Drift = -0.0044 dB

Peak SAR (extrapolated) = 3.3490

**SAR(1 g) = 1.11 mW/g; SAR(10 g) = 0.383 mW/g**

[Info: Interpolated medium parameters used for SAR evaluation.](#)

Maximum value of SAR (measured) = 2.042 mW/g



0 dB = 2.040mW/g = 6.19 dB mW/g

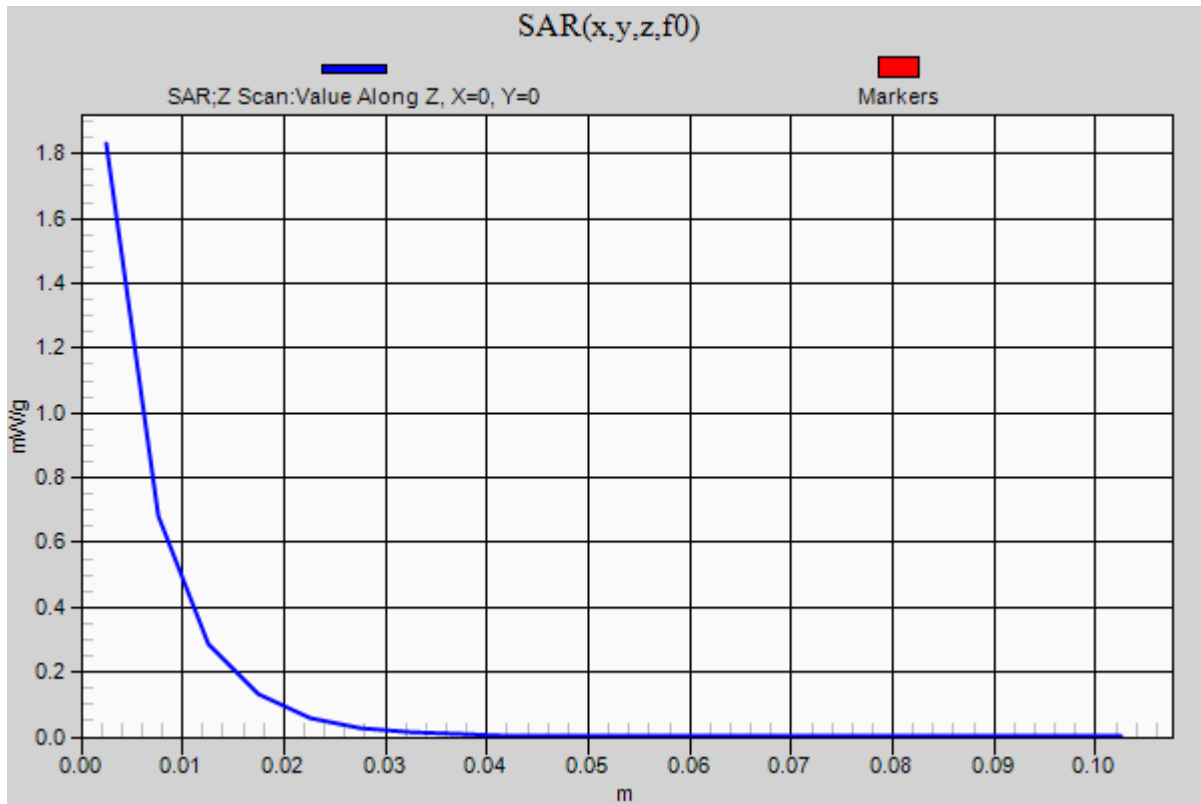
## WiFi 2.4 GHz

Frequency: 2437 MHz; Duty Cycle: 1:1

**Edge 3/802.11b\_ch 6/Z Scan (1x1x21):** Measurement grid: dx=20mm, dy=20mm, dz=5mm

Info: [Interpolated medium parameters used for SAR evaluation.](#)

Maximum value of SAR (measured) = 1.830 mW/g



## WiFi 2.4 GHz

Frequency: 2462 MHz; Duty Cycle: 1:1; Room Ambient Temperature: 24.0°C; Liquid Temperature: 23.0°C  
Medium parameters used (interpolated):  $f = 2462$  MHz;  $\sigma = 1.929$  mho/m;  $\epsilon_r = 50.898$ ;  $\rho = 1000$  kg/m<sup>3</sup>

DASY5 Configuration:

- Electronics: DAE4 Sn1261; Calibrated: 3/9/2012
- Probe: EX3DV4 - SN3757; ConvF(6.85, 6.85, 6.85); Calibrated: 3/24/2012
- Sensor-Surface: 2mm (Mechanical Surface Detection)
- Phantom: Back ELI v5.0; Type: QDOVA002AA; Serial: 1136

**Edge 3/802.11b\_ch 11/Area Scan (8x10x1):** Measurement grid: dx=12mm, dy=12mm

[Info: Interpolated medium parameters used for SAR evaluation.](#)

Maximum value of SAR (measured) = 1.163 mW/g

**Edge 3/802.11b\_ch 11/Zoom Scan (7x7x7)/Cube 0:** Measurement grid: dx=5mm, dy=5mm, dz=5mm

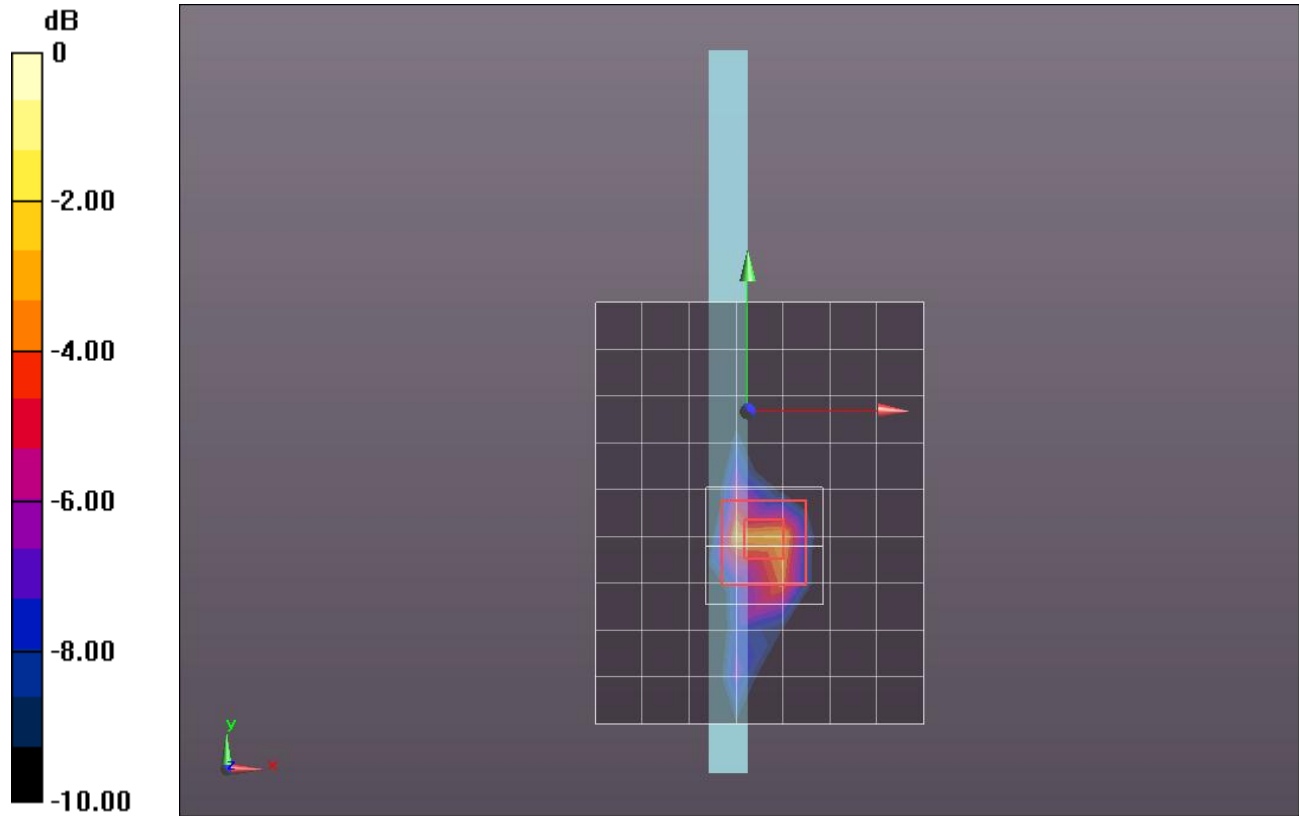
Reference Value = 30.807 V/m; Power Drift = -0.05 dB

Peak SAR (extrapolated) = 3.2500

**SAR(1 g) = 1.07 mW/g; SAR(10 g) = 0.370 mW/g**

[Info: Interpolated medium parameters used for SAR evaluation.](#)

Maximum value of SAR (measured) = 1.995 mW/g



0 dB = 1.990mW/g = 5.98 dB mW/g