



PHOTO 1  
TOP GLASS REMOVED



PHOTO 2  
TOP SIDE TOUCHPAD/  
DISPLAY



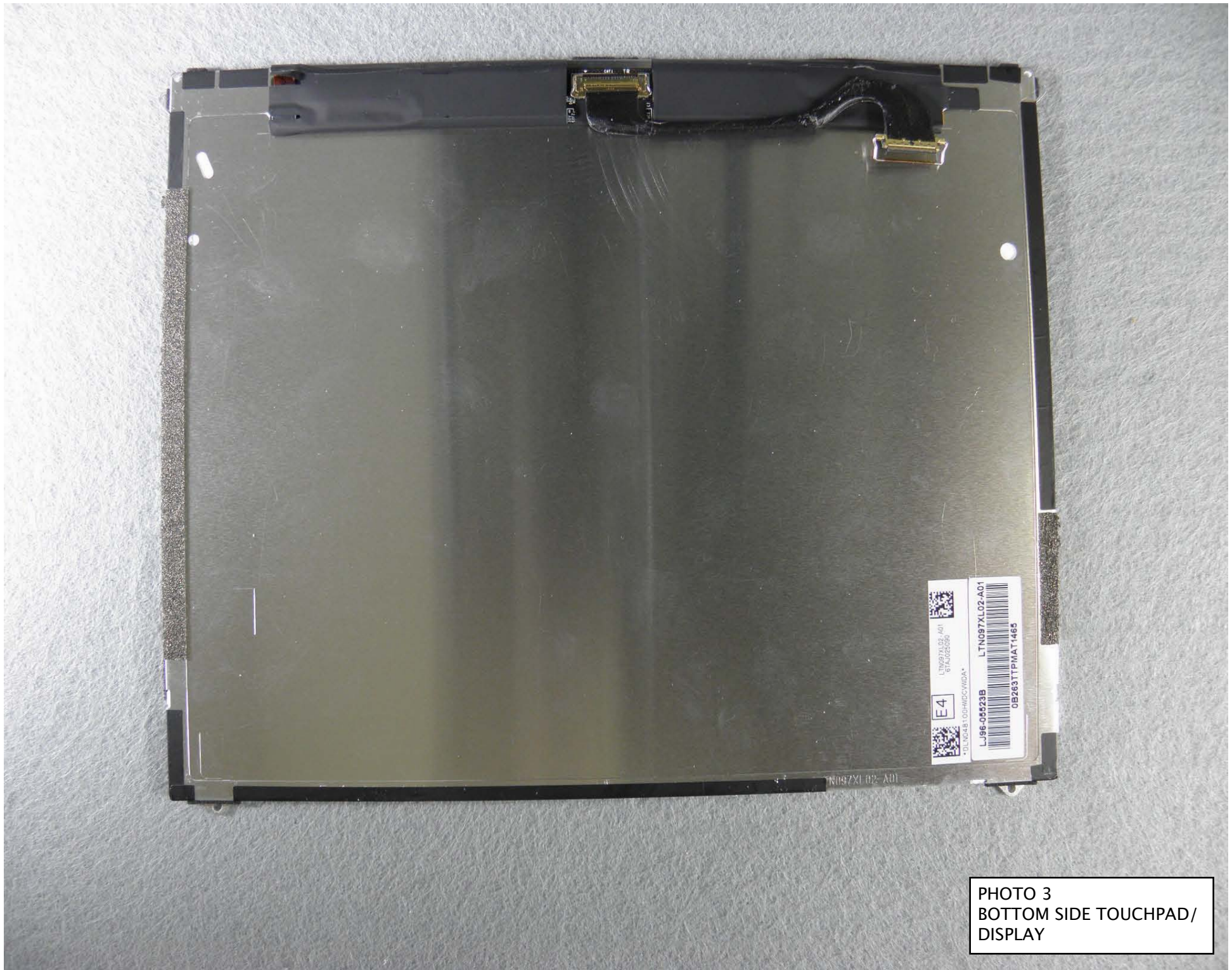


PHOTO 3  
BOTTOM SIDE TOUCHPAD/  
DISPLAY



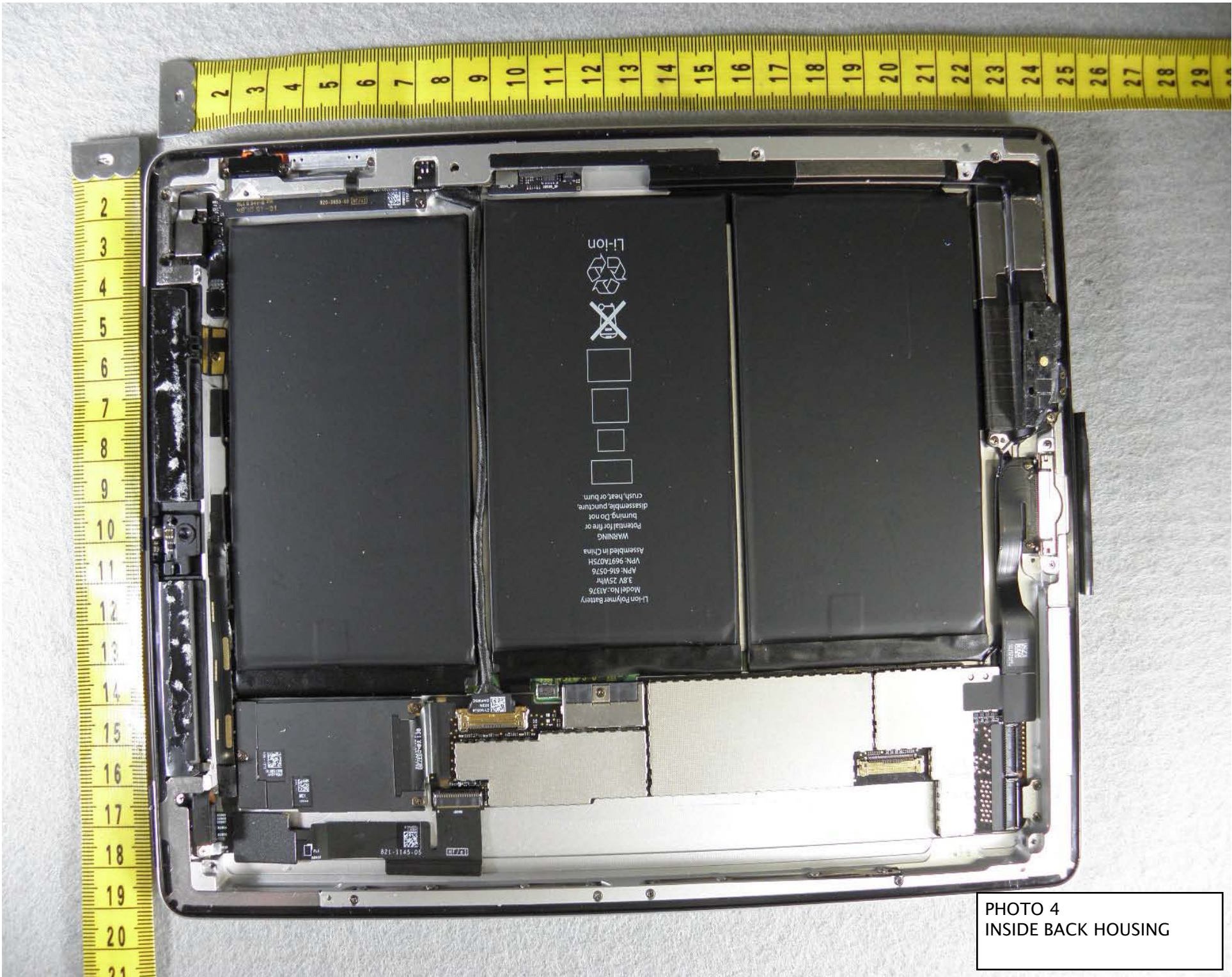
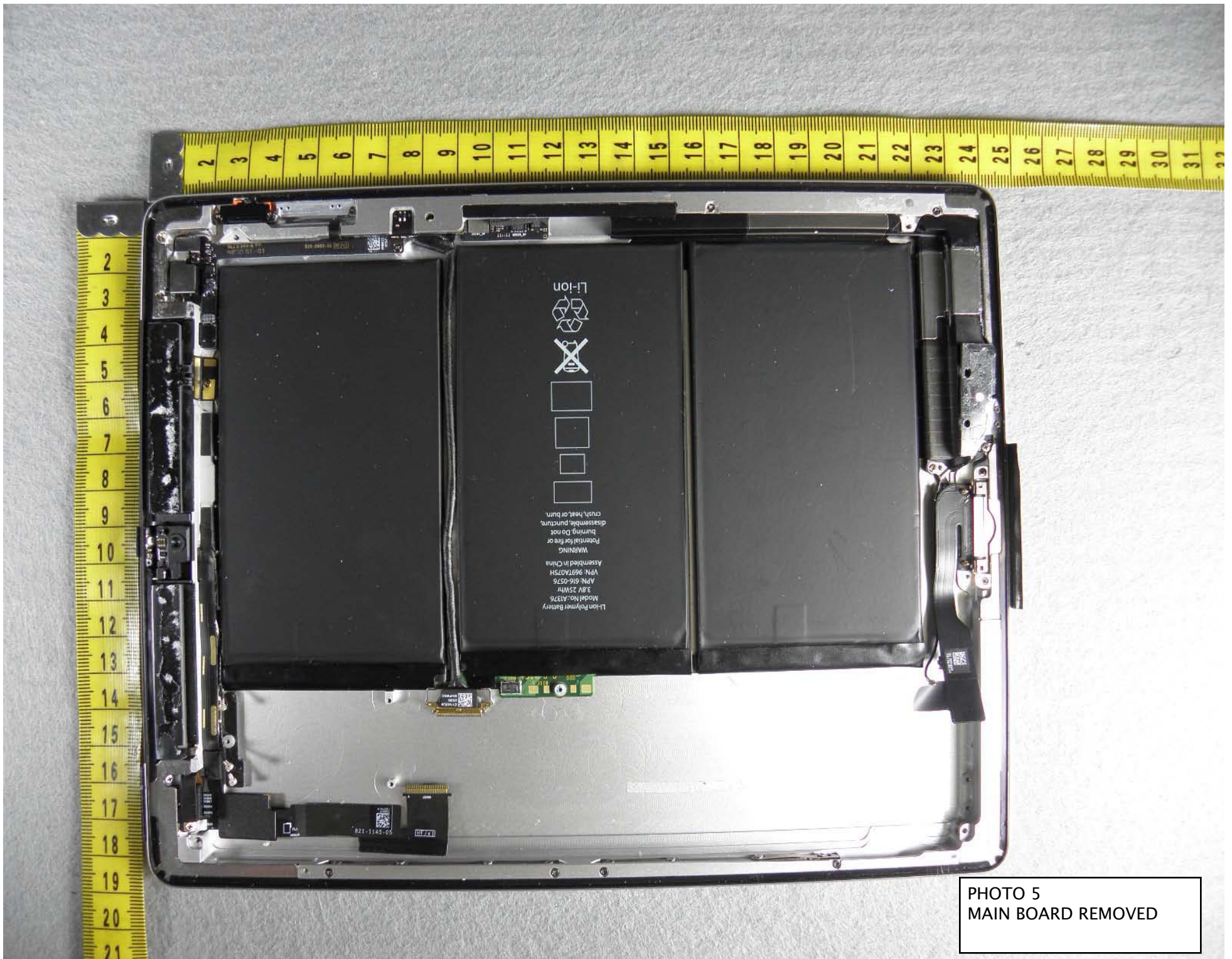


PHOTO 4  
INSIDE BACK HOUSING







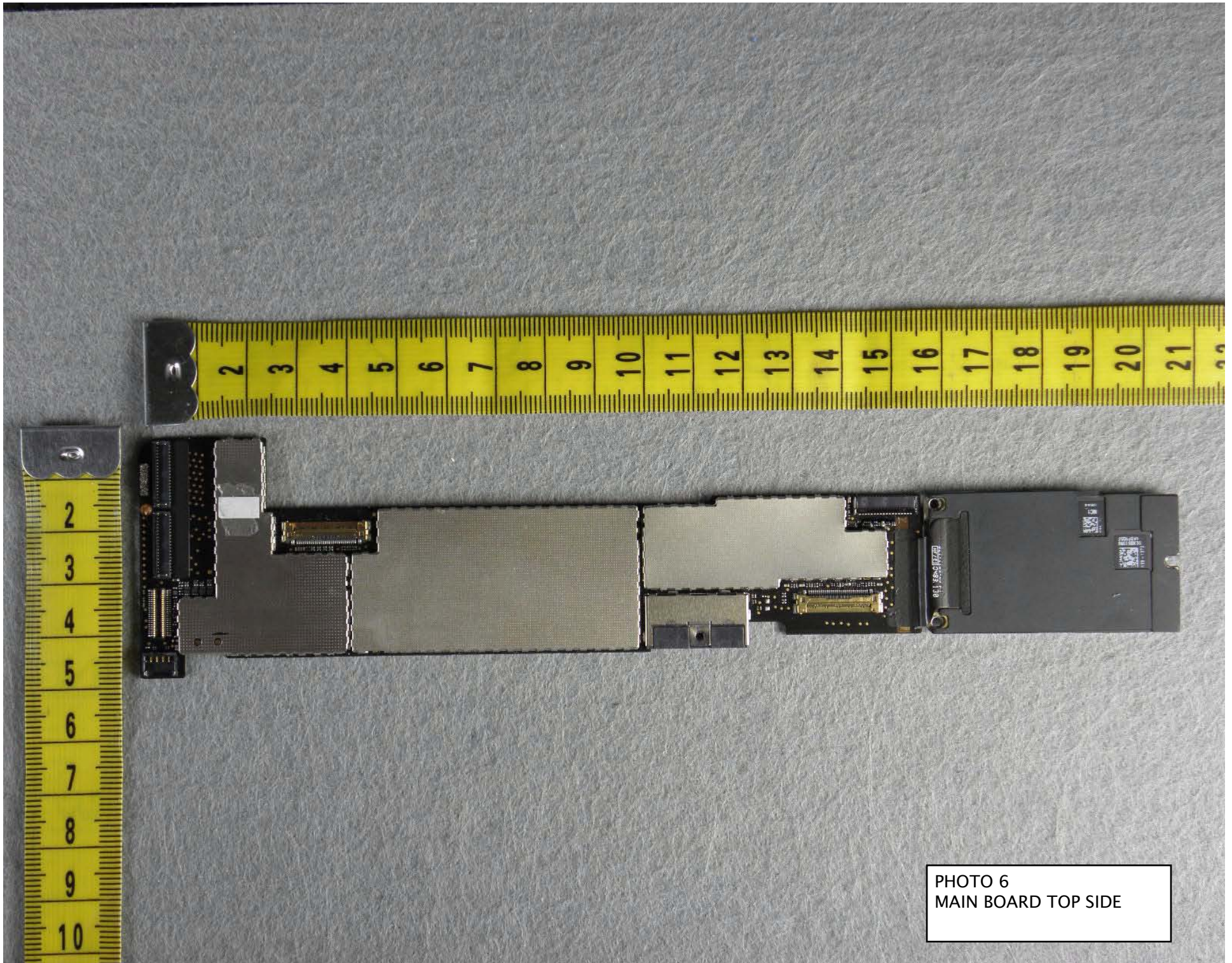


PHOTO 6  
MAIN BOARD TOP SIDE



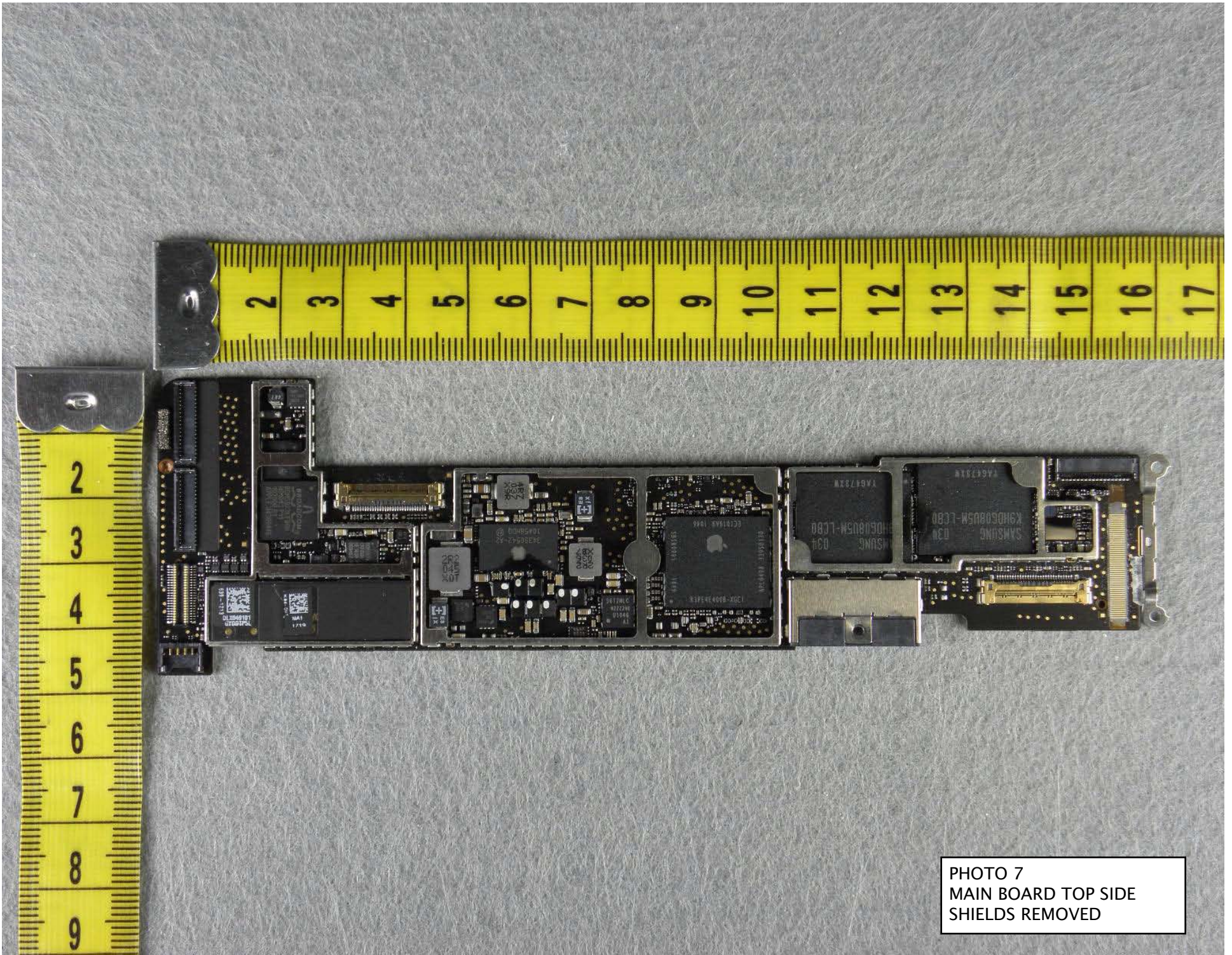


PHOTO 7  
MAIN BOARD TOP SIDE  
SHIELDS REMOVED



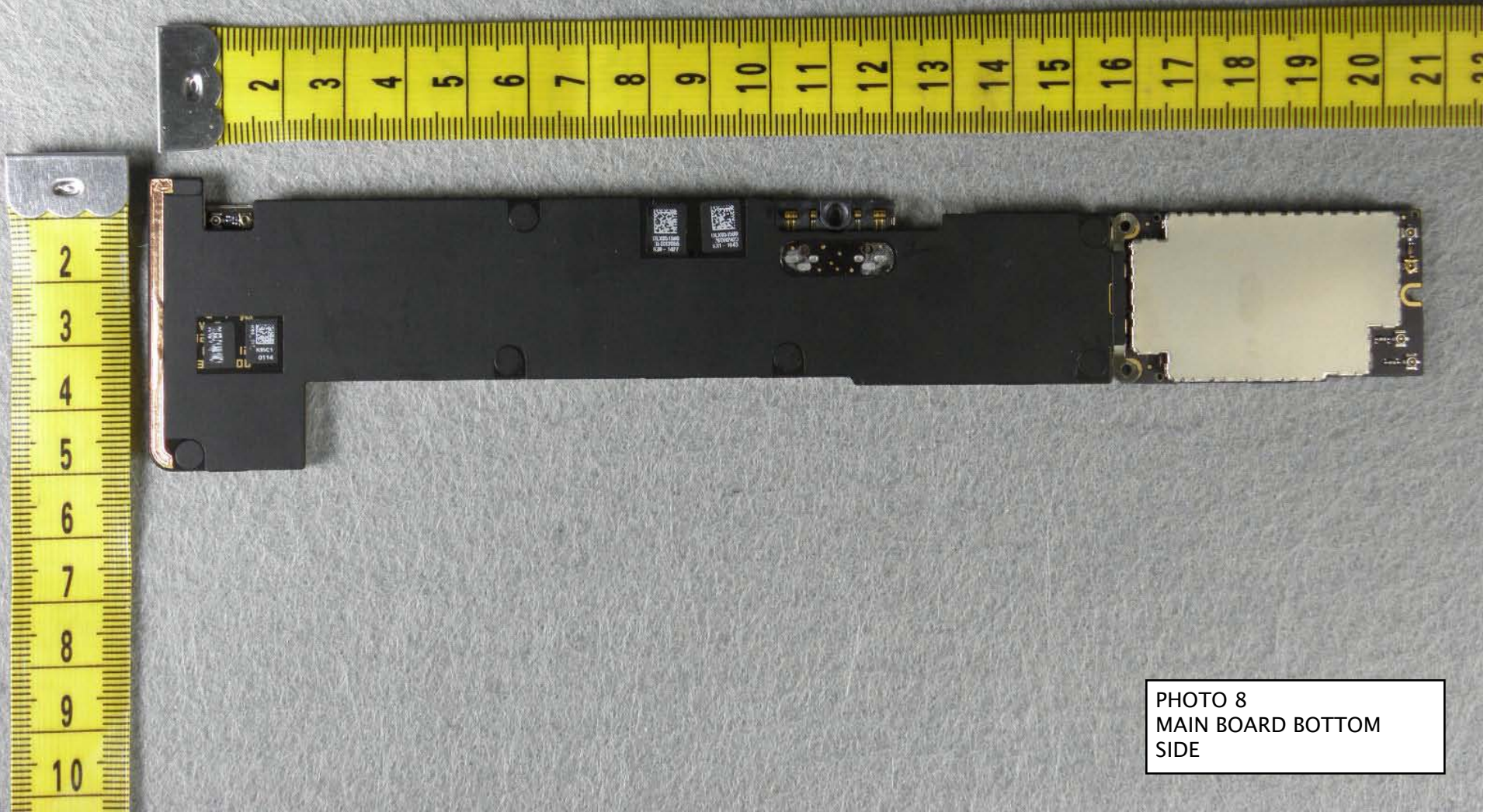


PHOTO 8  
MAIN BOARD BOTTOM  
SIDE



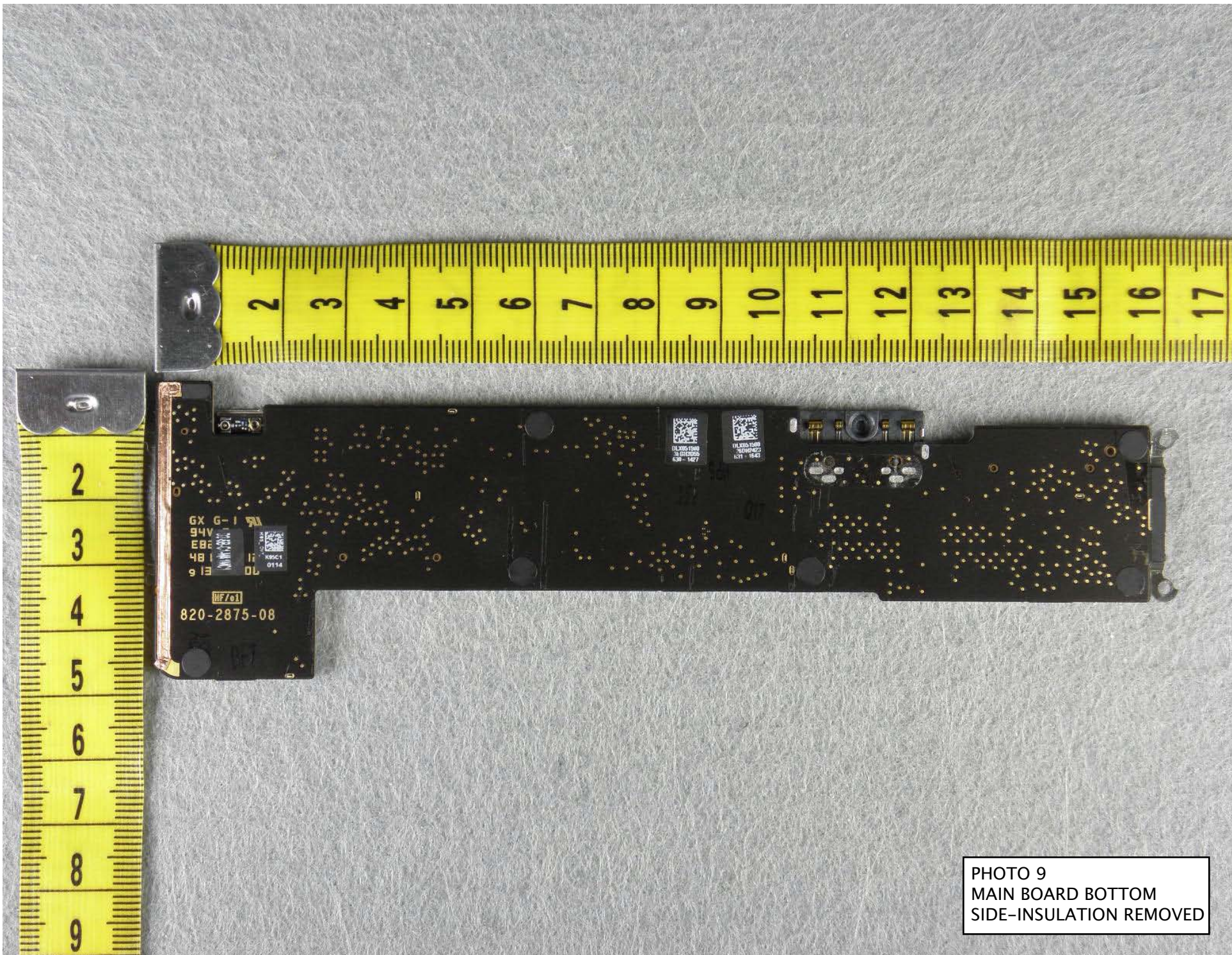


PHOTO 9  
MAIN BOARD BOTTOM  
SIDE-INSULATION REMOVED



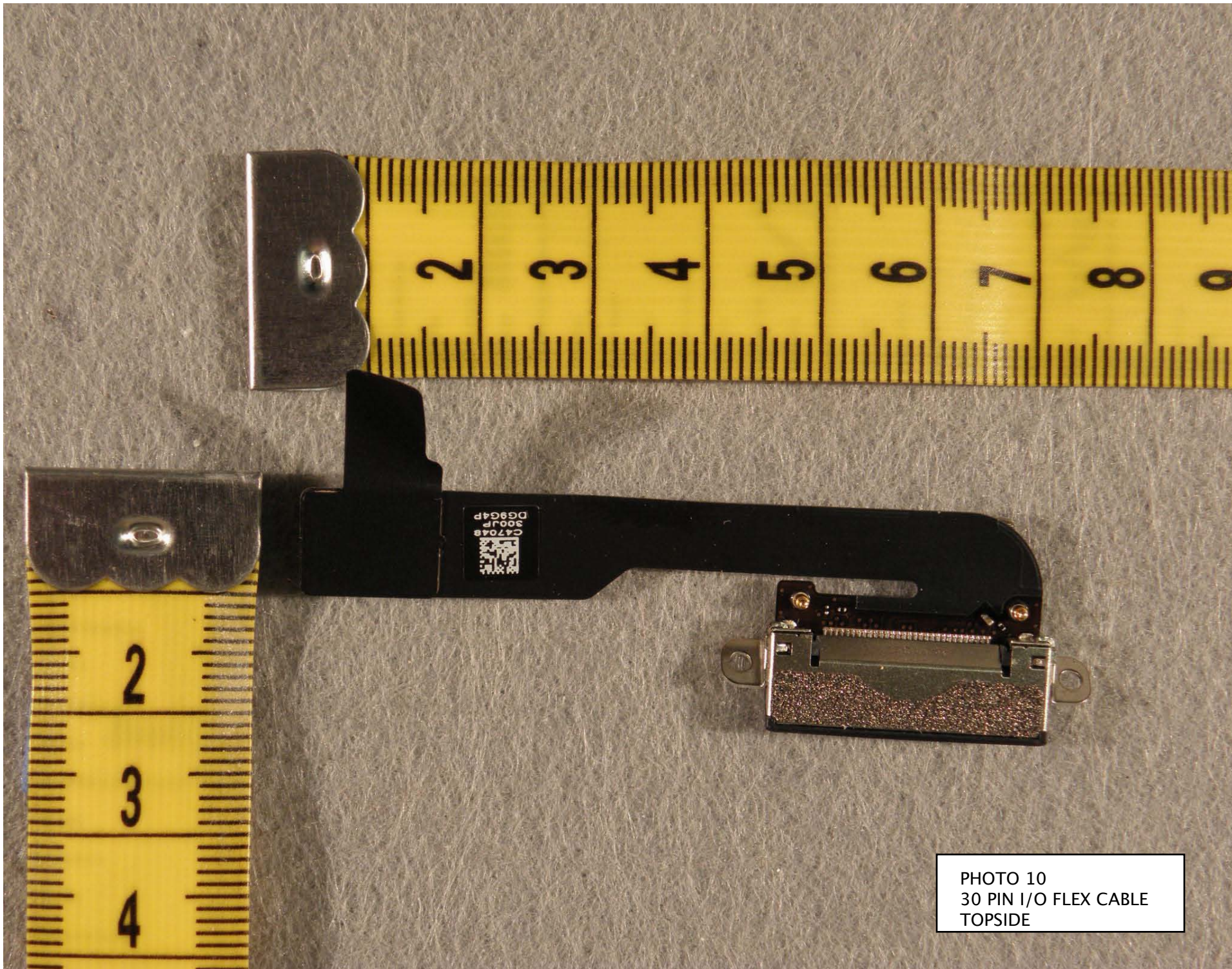


PHOTO 10  
30 PIN I/O FLEX CABLE  
TOPSIDE



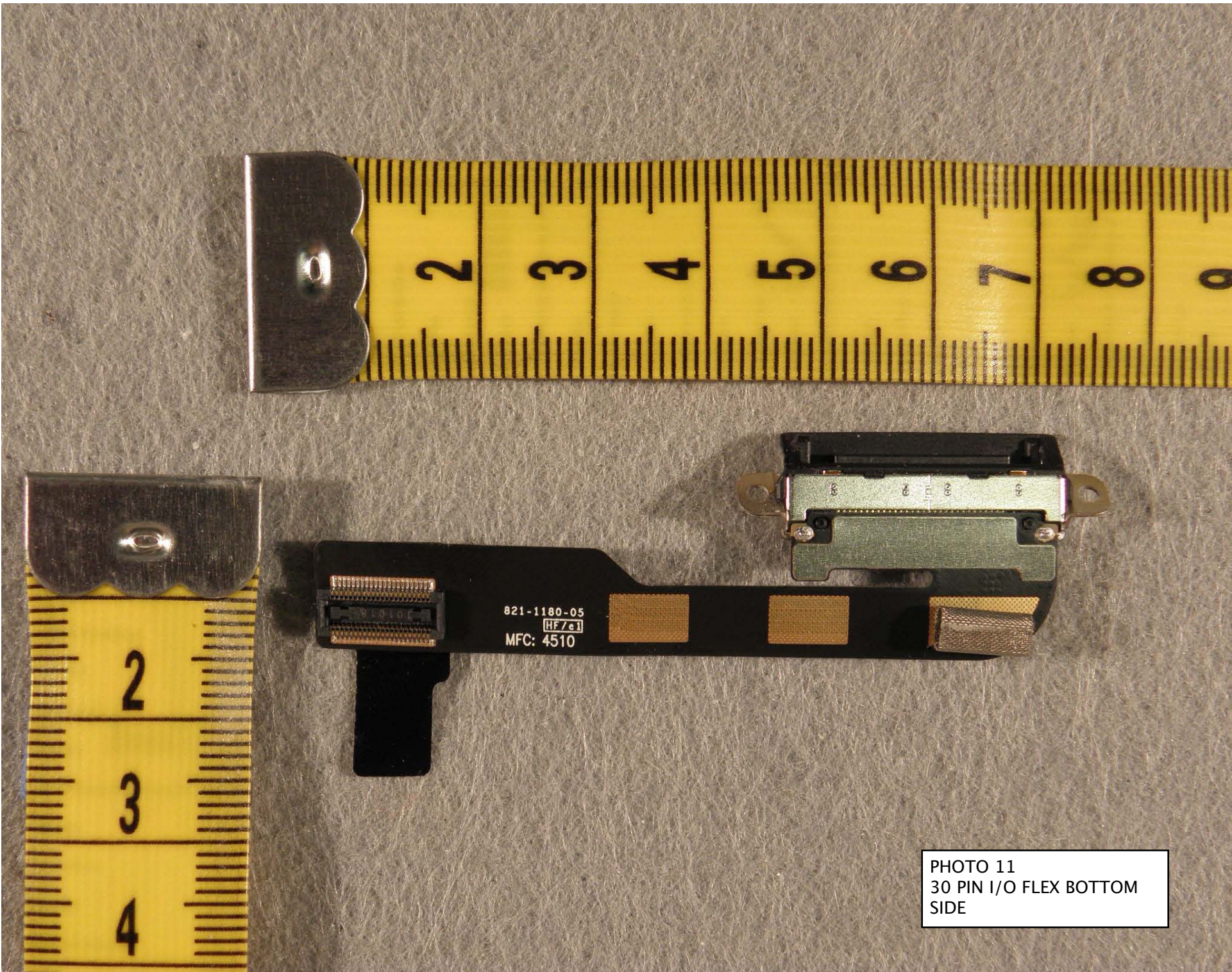


PHOTO 11  
30 PIN I/O FLEX BOTTOM  
SIDE