



PHOTO 1  
TOP GLASS REMOVED



PHOTO 2  
TOP SIDE TOUCHPAD/  
DISPLAY





PHOTO 3  
BOTTOM SIDE TOUCHPAD/  
DISPLAY



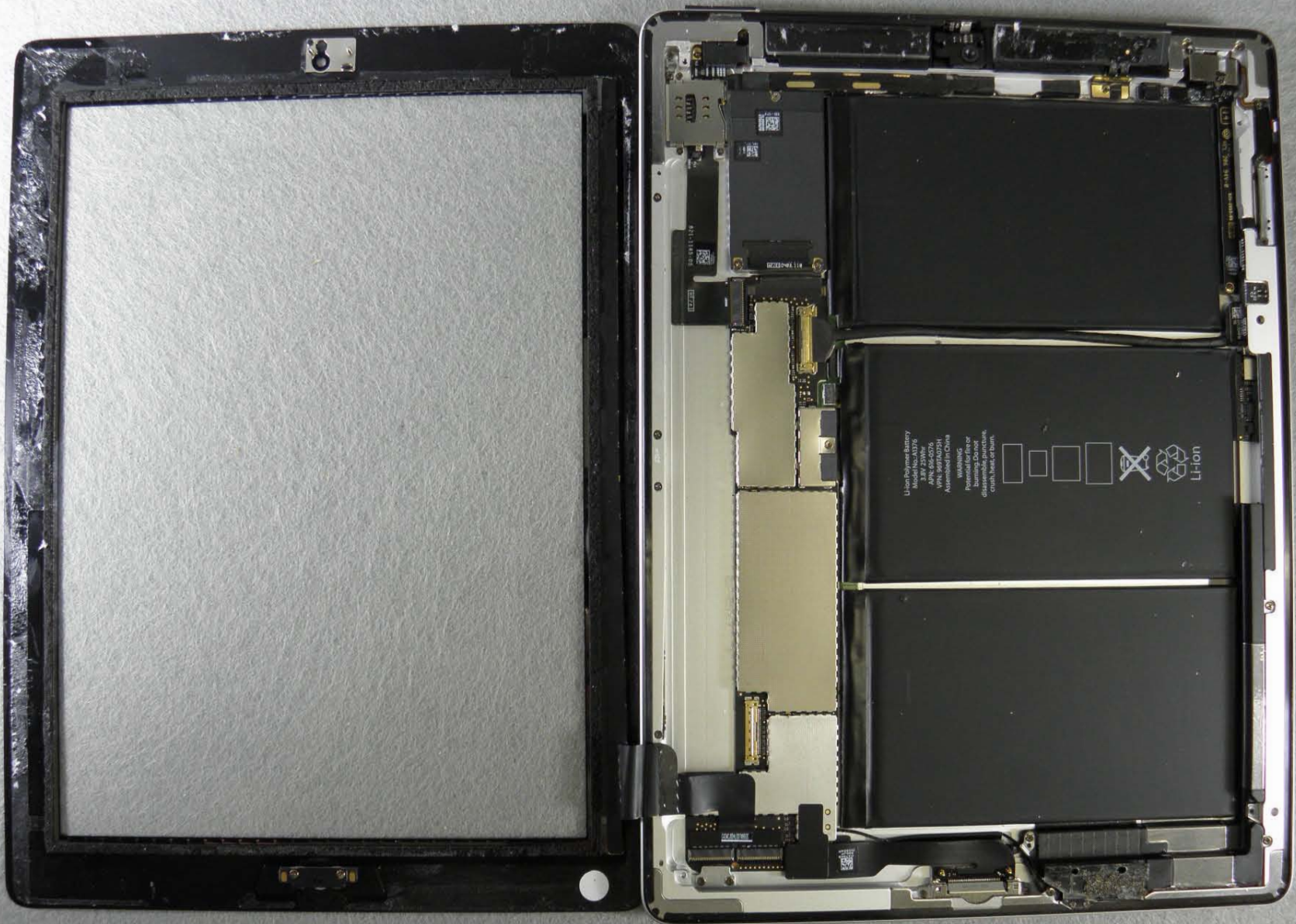


PHOTO 4  
TOUCHPAD/ DISPLAY  
REMOVED



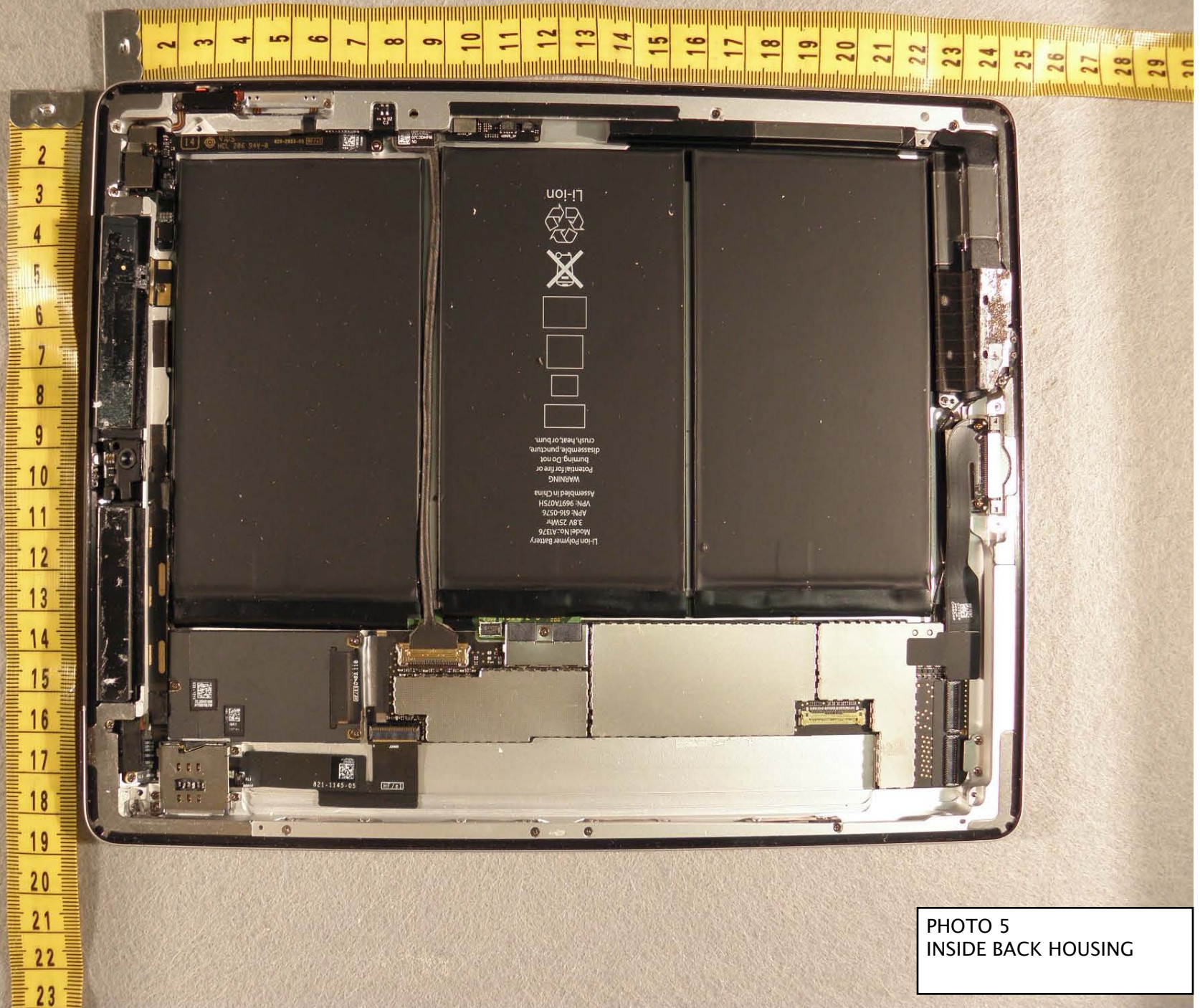


PHOTO 5  
INSIDE BACK HOUSING



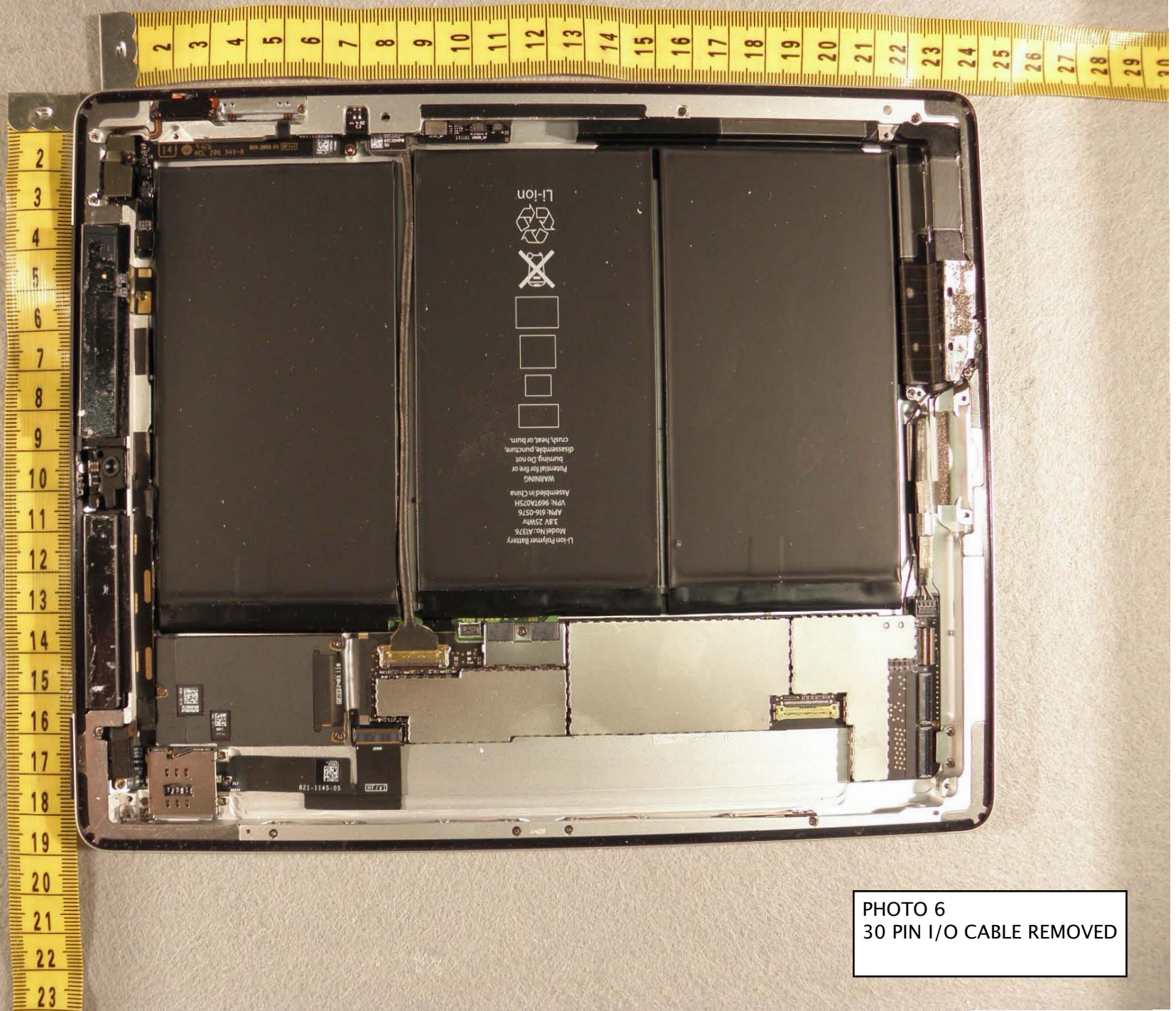


PHOTO 6  
30 PIN I/O CABLE REMOVED



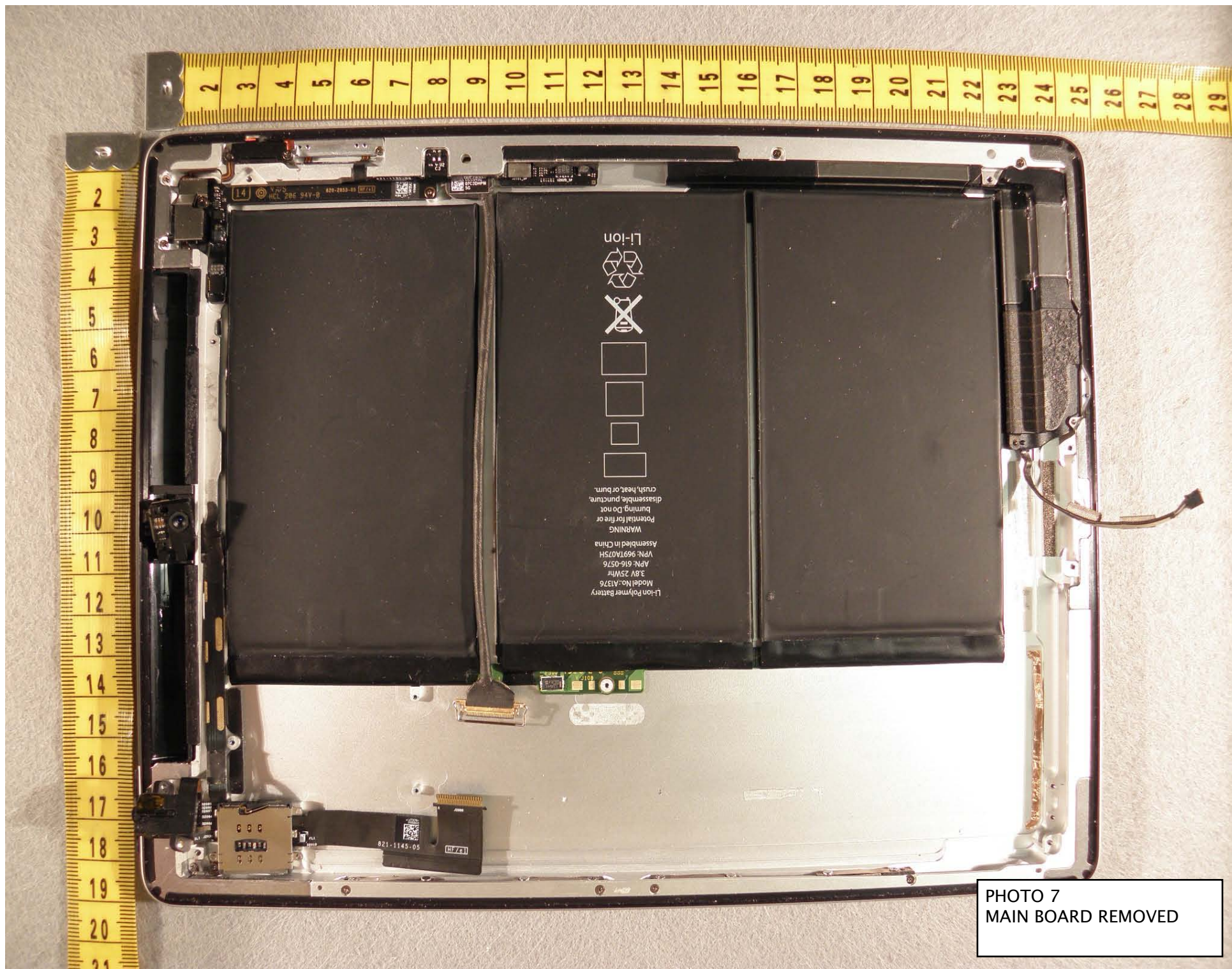


PHOTO 7  
MAIN BOARD REMOVED



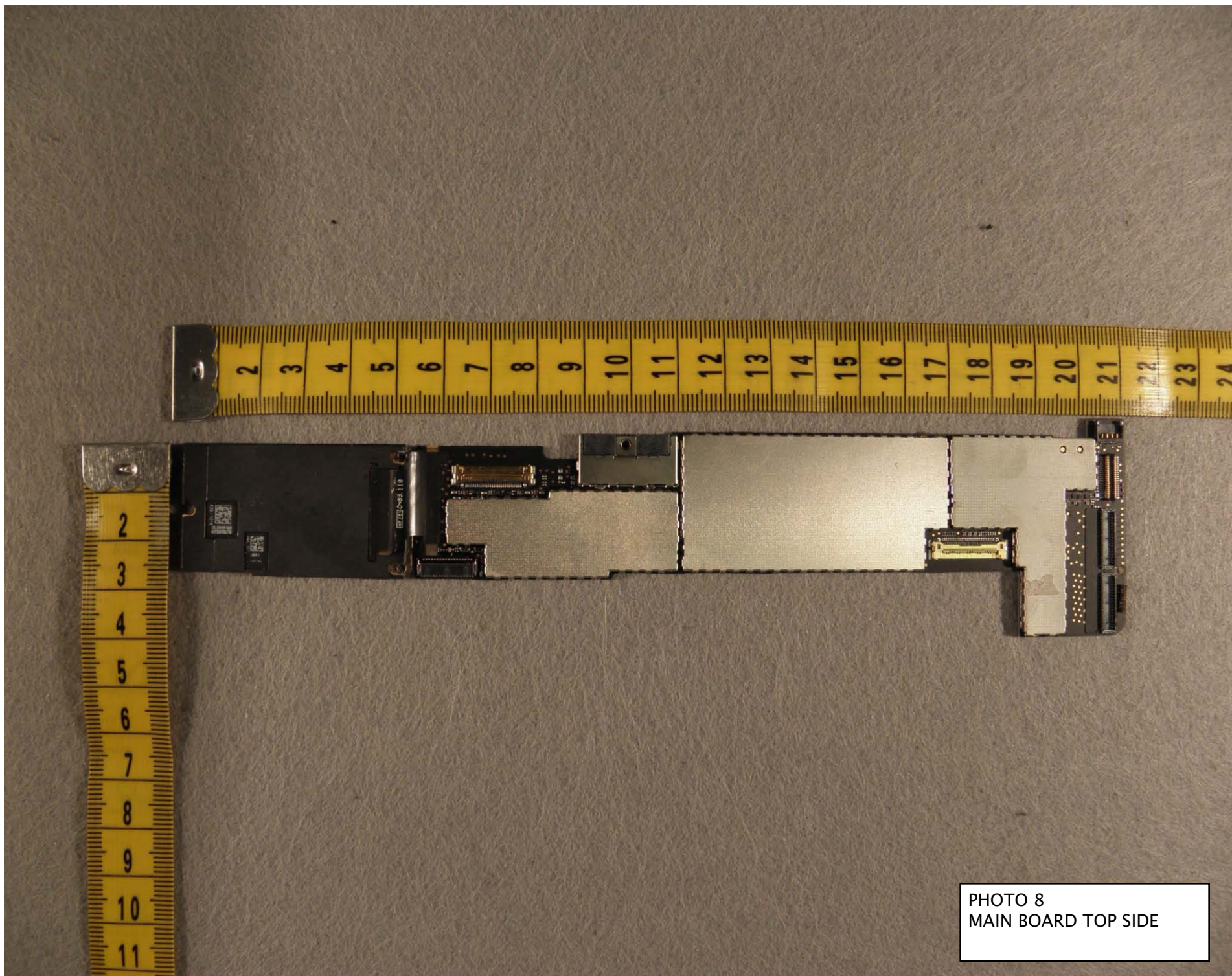


PHOTO 8  
MAIN BOARD TOP SIDE



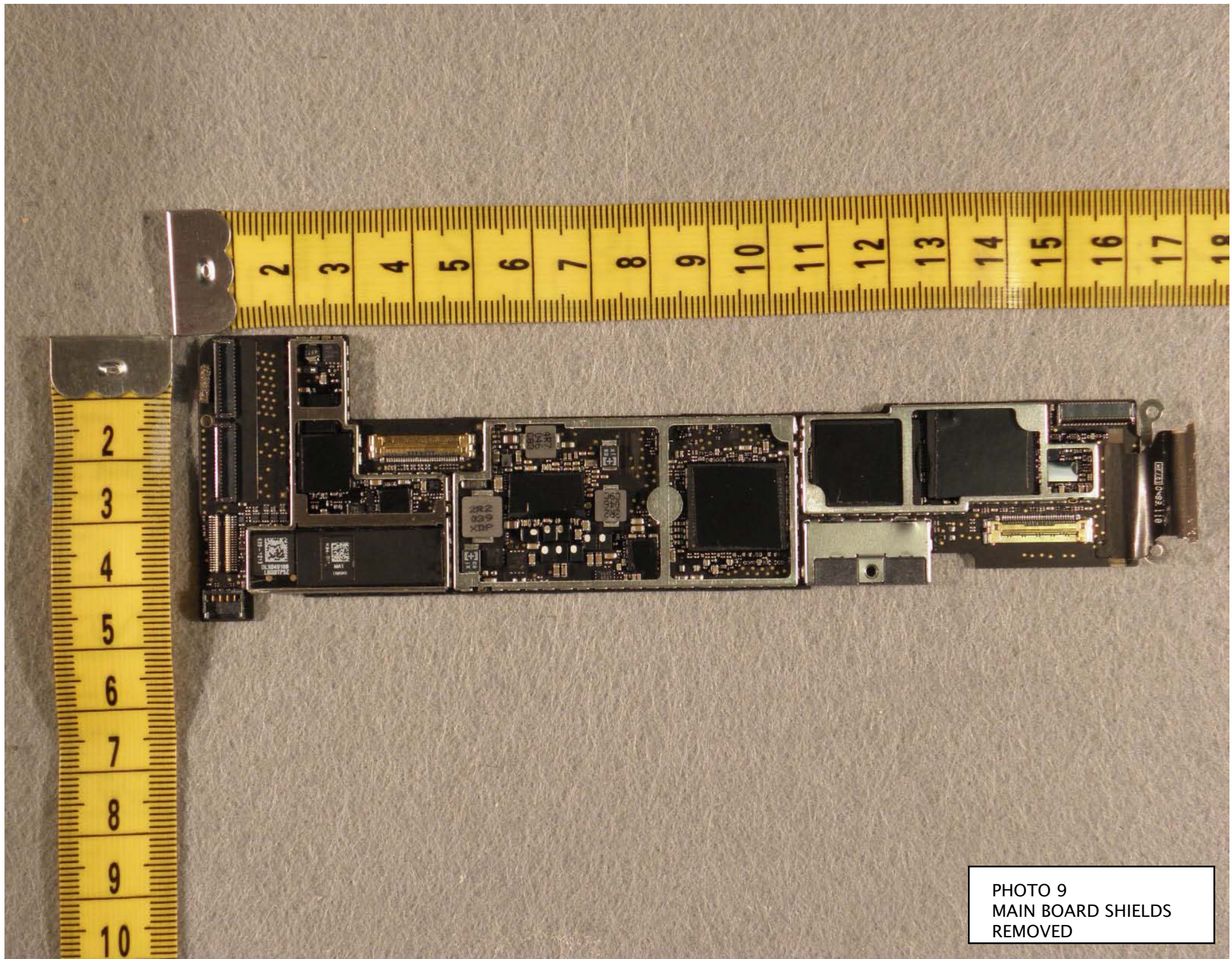


PHOTO 9  
MAIN BOARD SHIELDS  
REMOVED



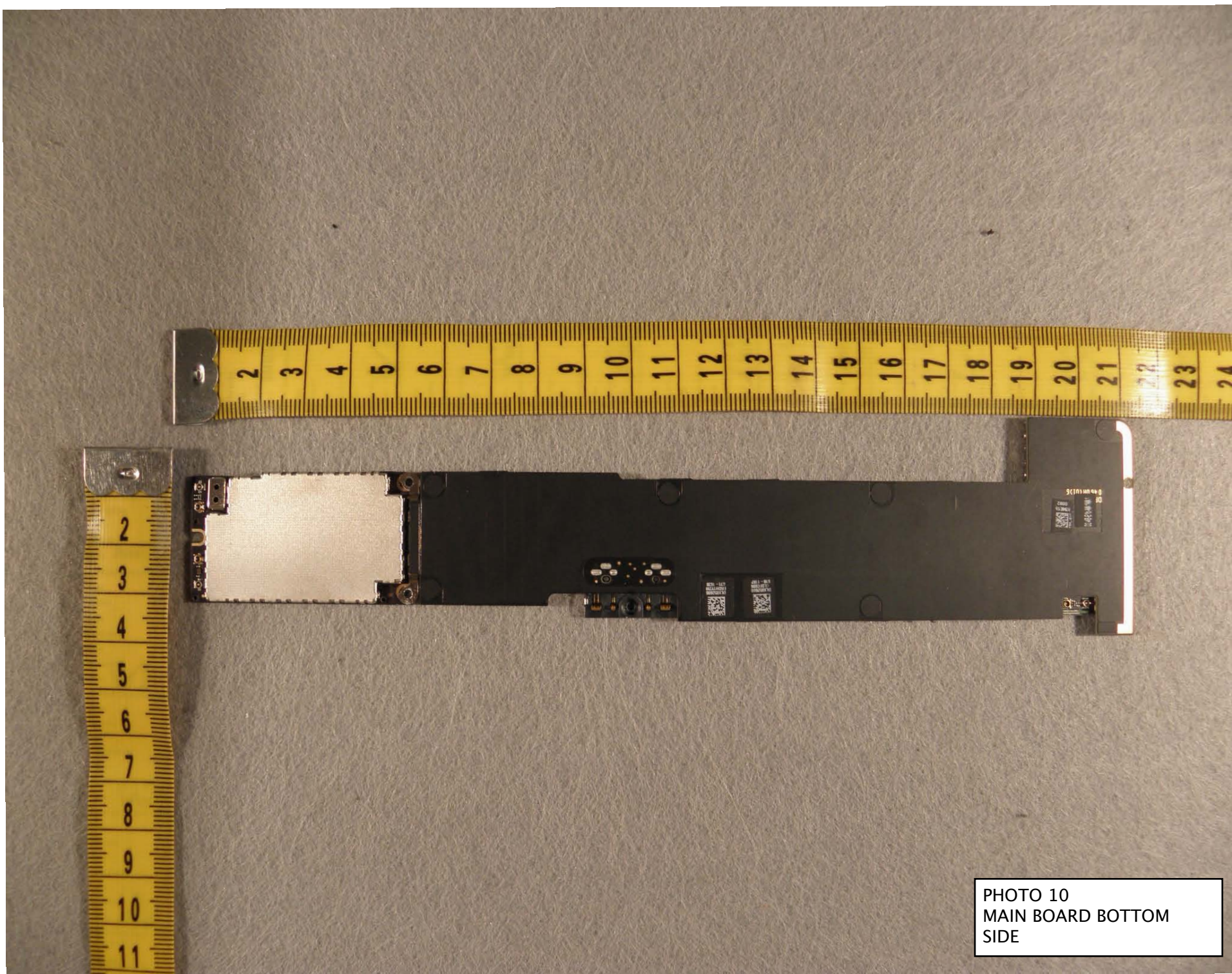


PHOTO 10  
MAIN BOARD BOTTOM  
SIDE



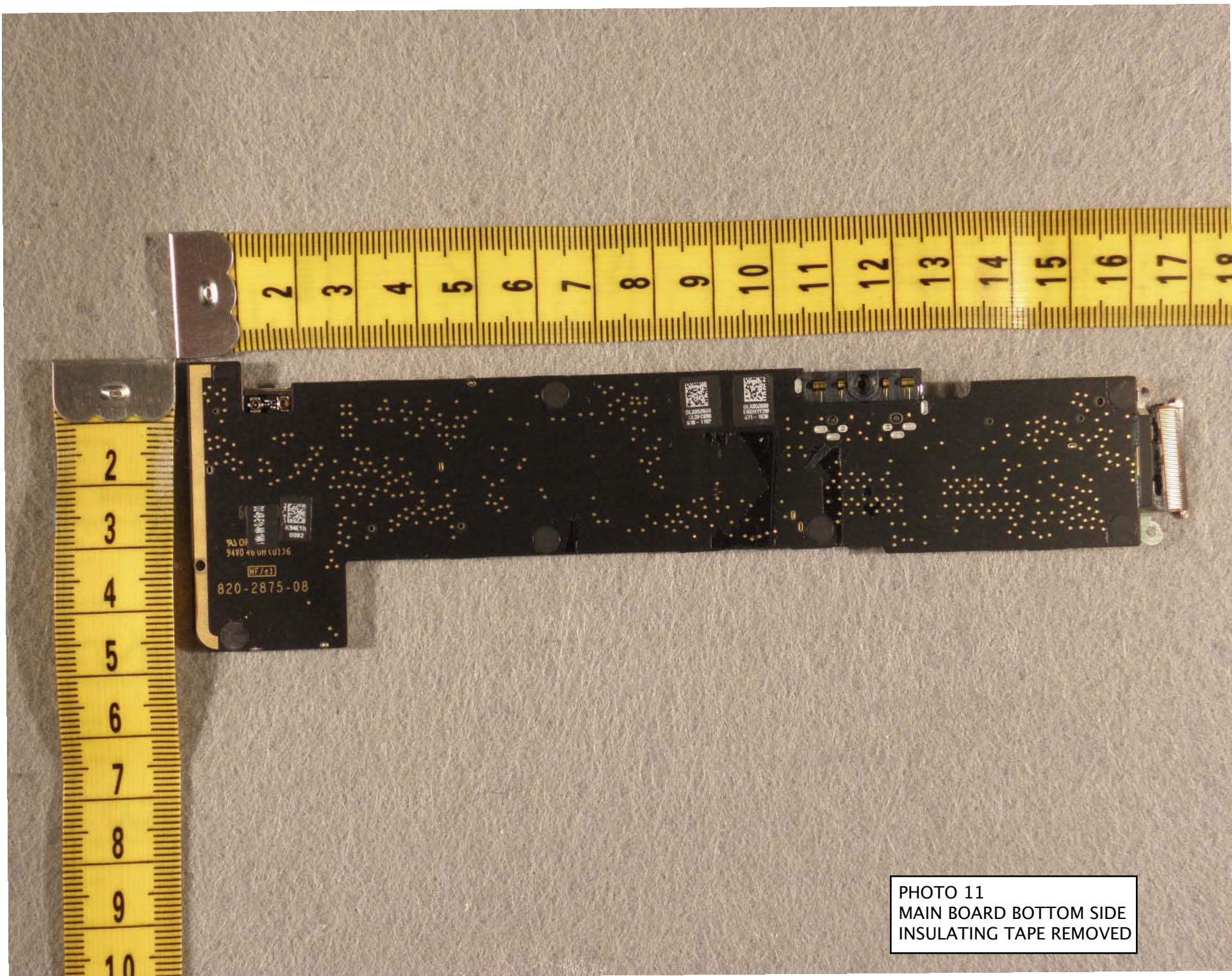


PHOTO 11  
MAIN BOARD BOTTOM SIDE  
INSULATING TAPE REMOVED



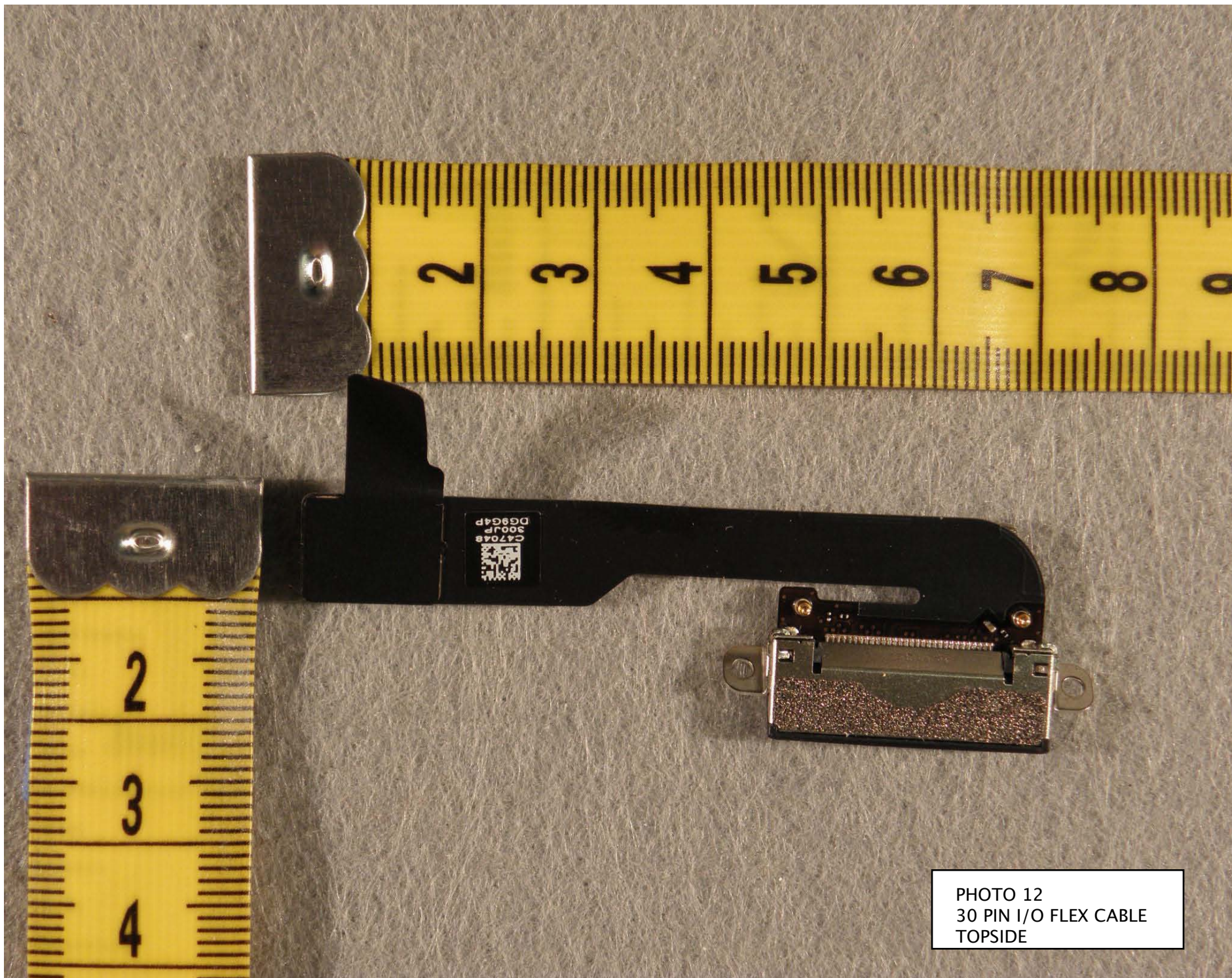


PHOTO 12  
30 PIN I/O FLEX CABLE  
TOPSIDE



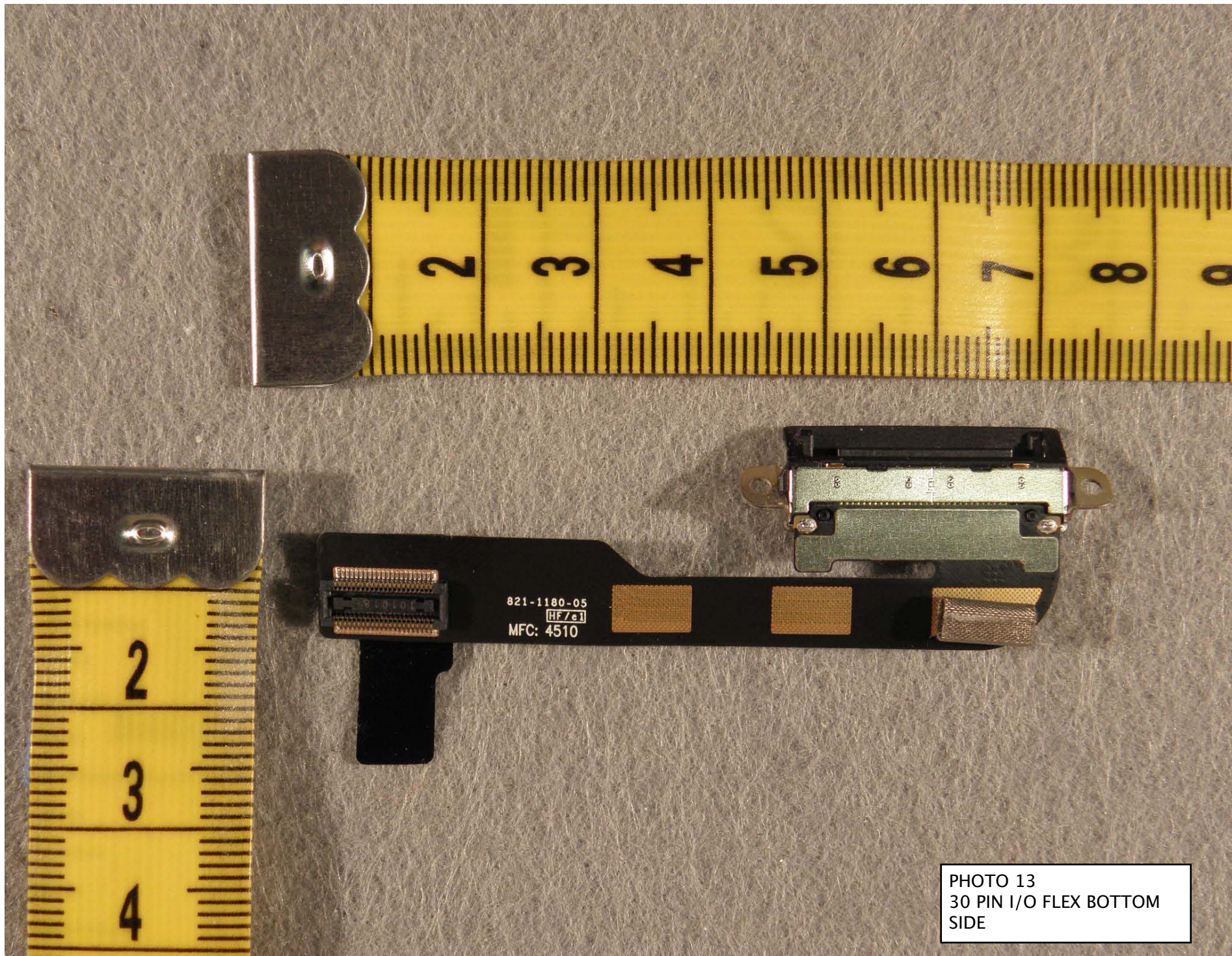


PHOTO 13  
30 PIN I/O FLEX BOTTOM  
SIDE