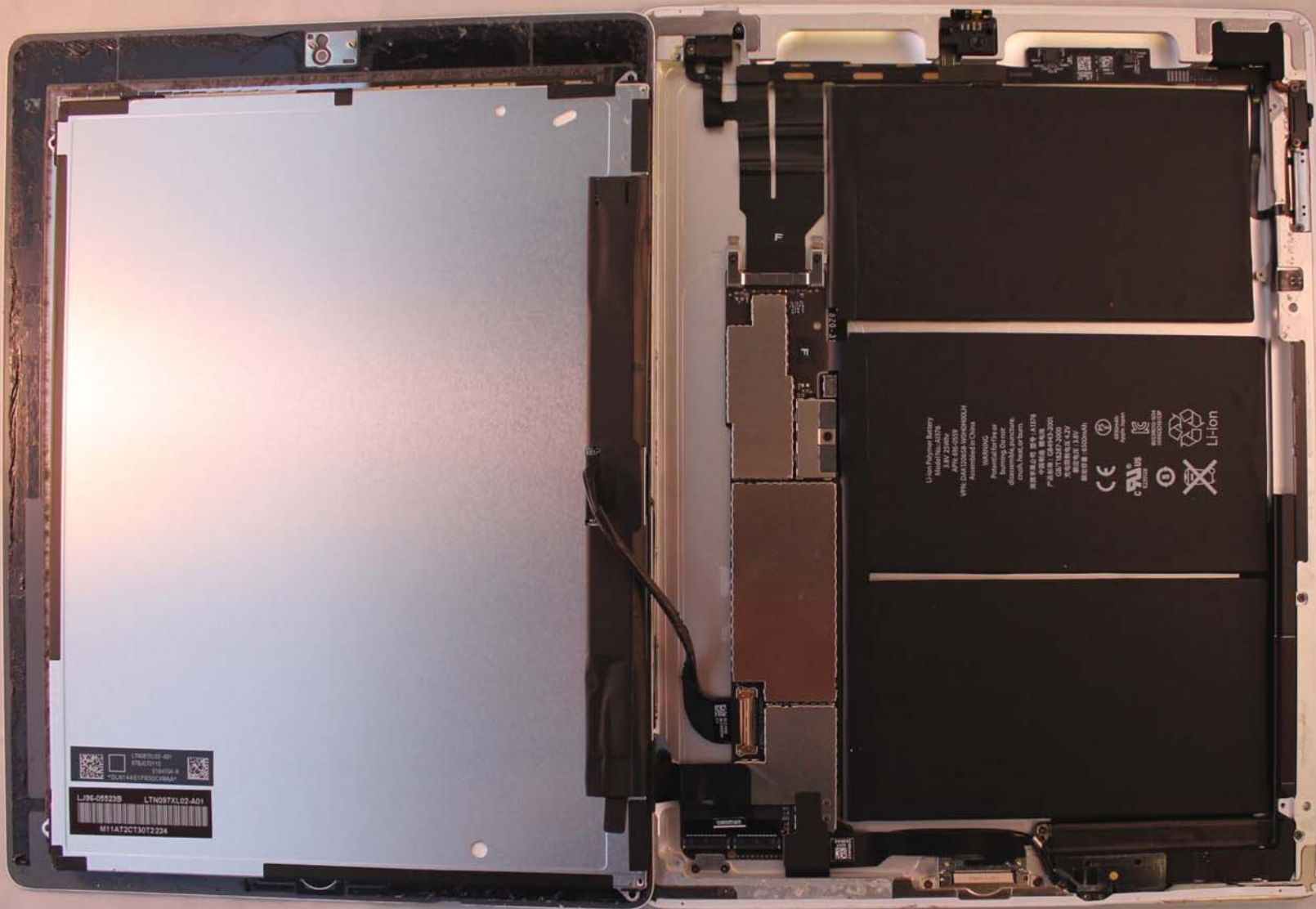
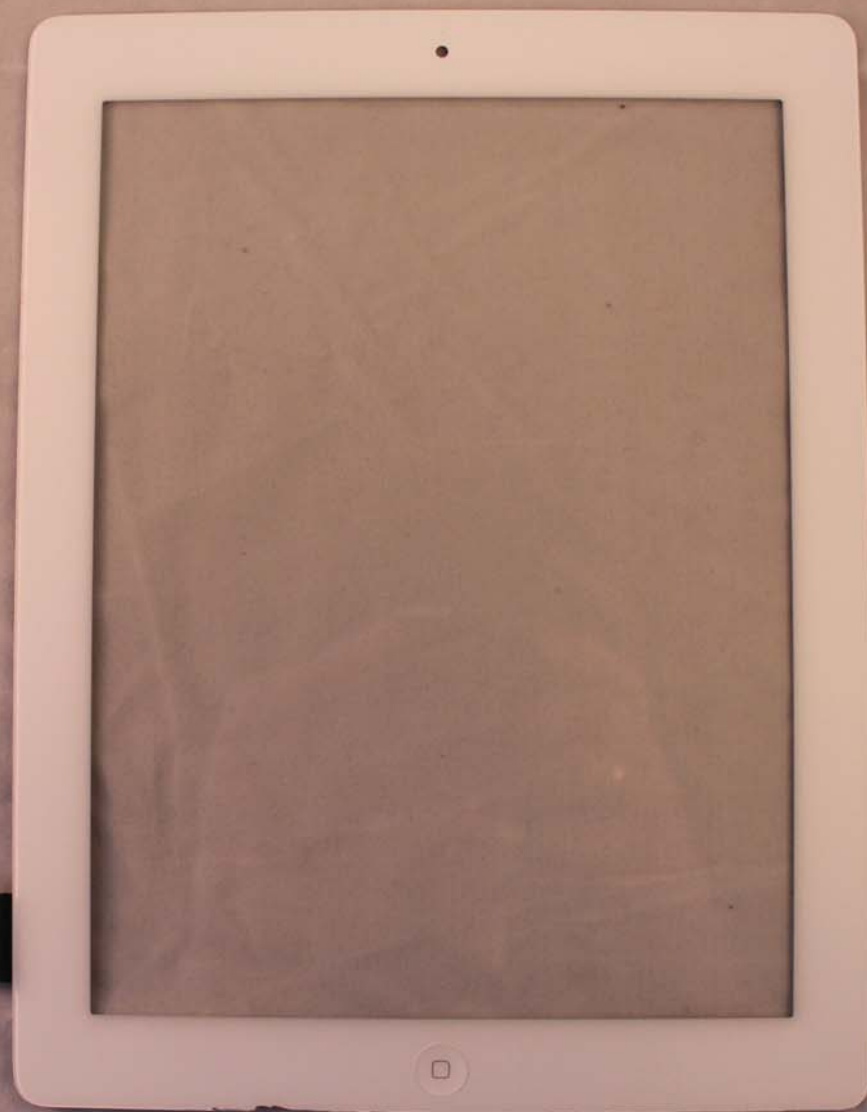


A1395 - Photo 1
Touch Screen Panel removed



A1395 - Photo 2
LCD Panel removed



A1395 - Photo 3
Touch Screen Panel - Front

Apple Proprietary and Confidential

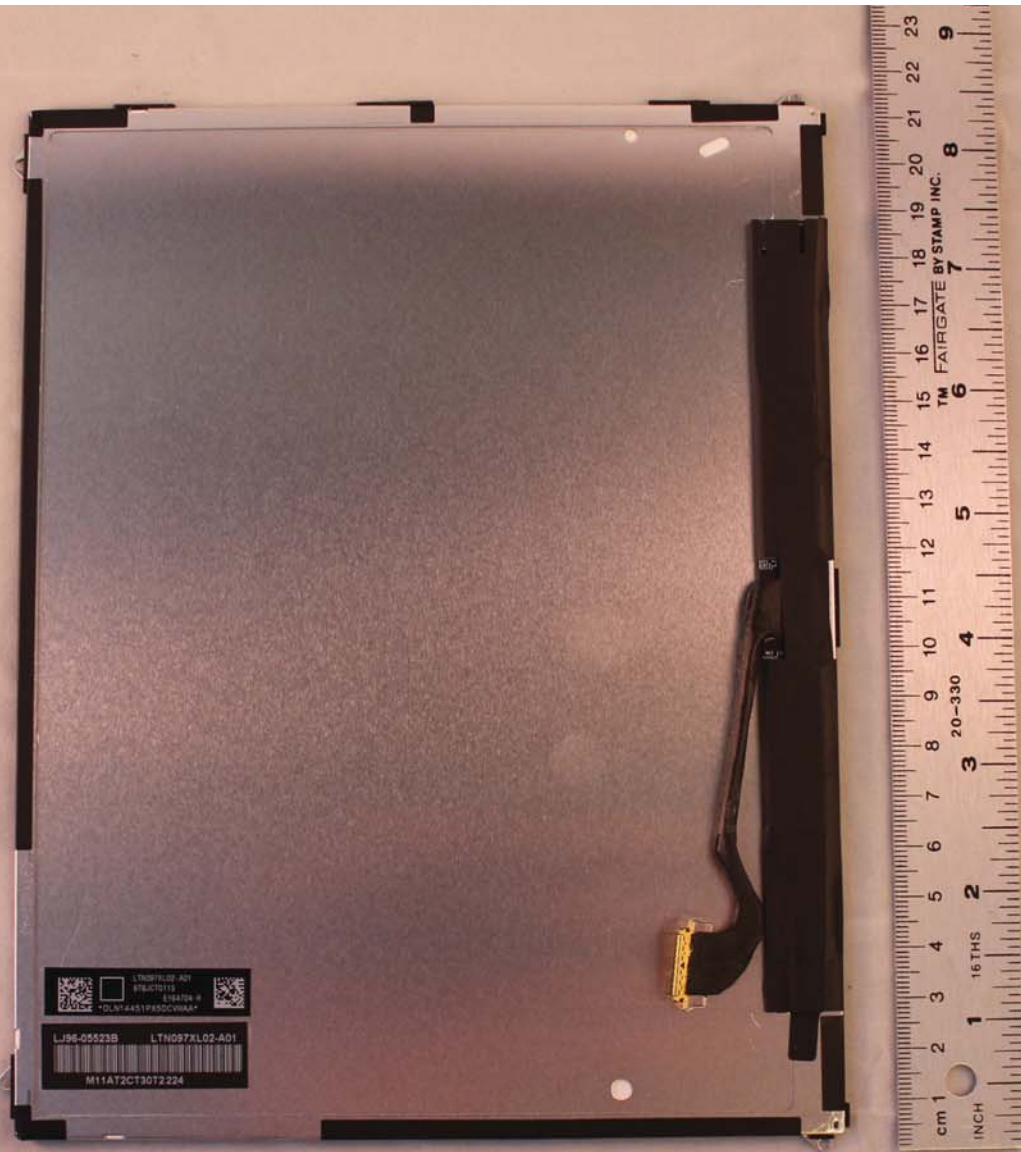


A1395 - Photo 4
Touch Screen Panel - Back

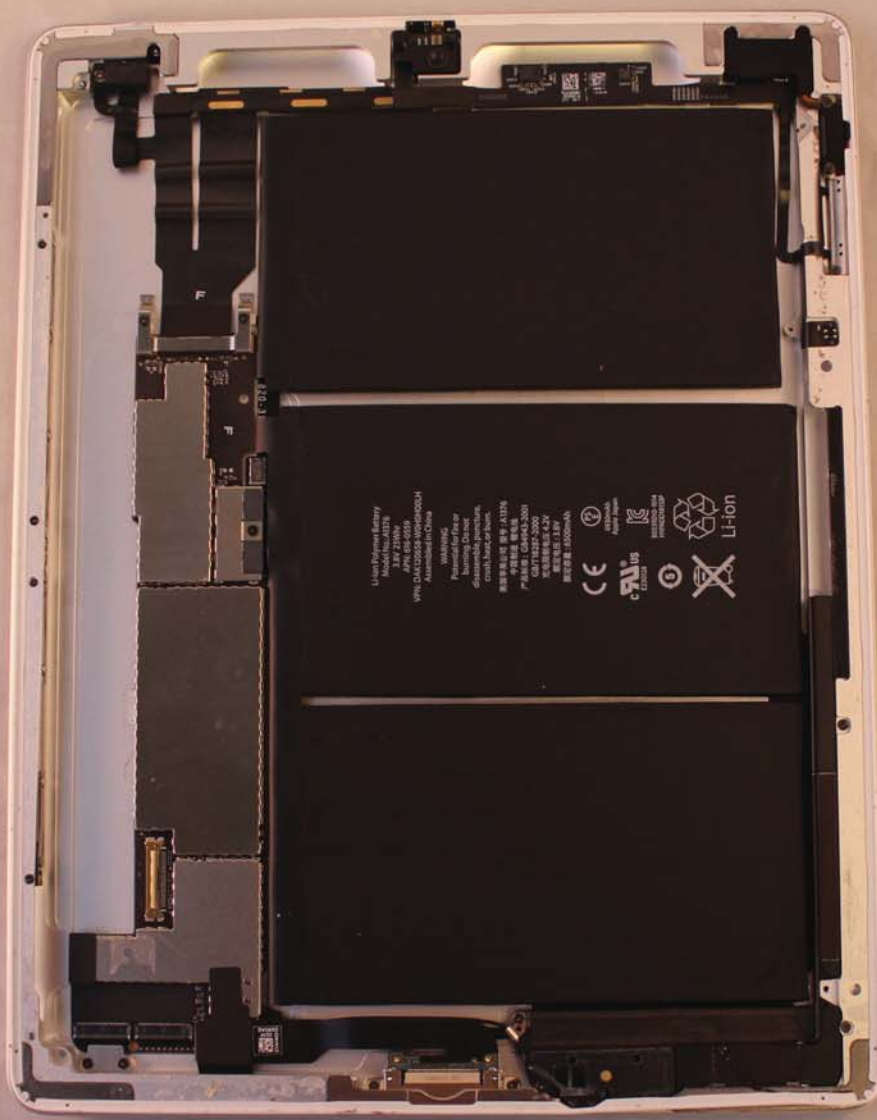
Apple Proprietary and Confidential



A1395 - Photo 5
LCD Panel - Front



A1395 - Photo 6
LCD Panel - Back



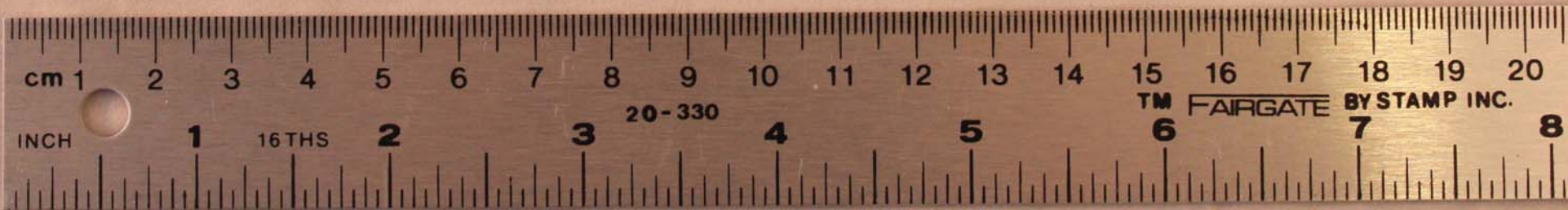
Li-ion Power Battery
Model: H041876
3.8V 2800mAh
WVA D4M20558 9P0400004
Assembled in China

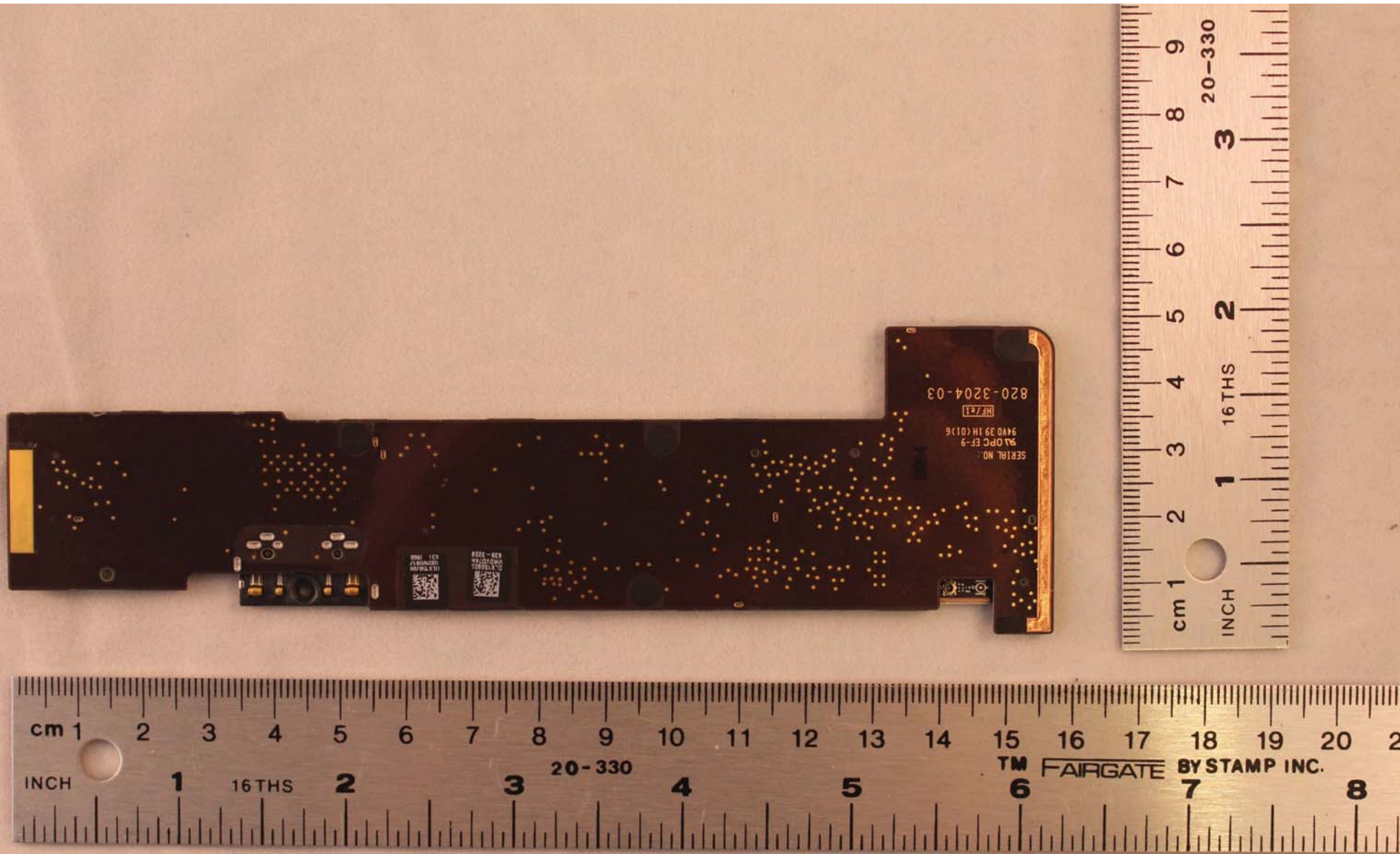
WARNING:
Do not disassemble,
disassemble puncture,
crush, burn or expose
to fire.
RECYCLE: RECYCLE
PAPER: C 04940-2001
RECYCLE: 2001
RECYCLE: 2001

CE
c-AL US
0
Li-Ion

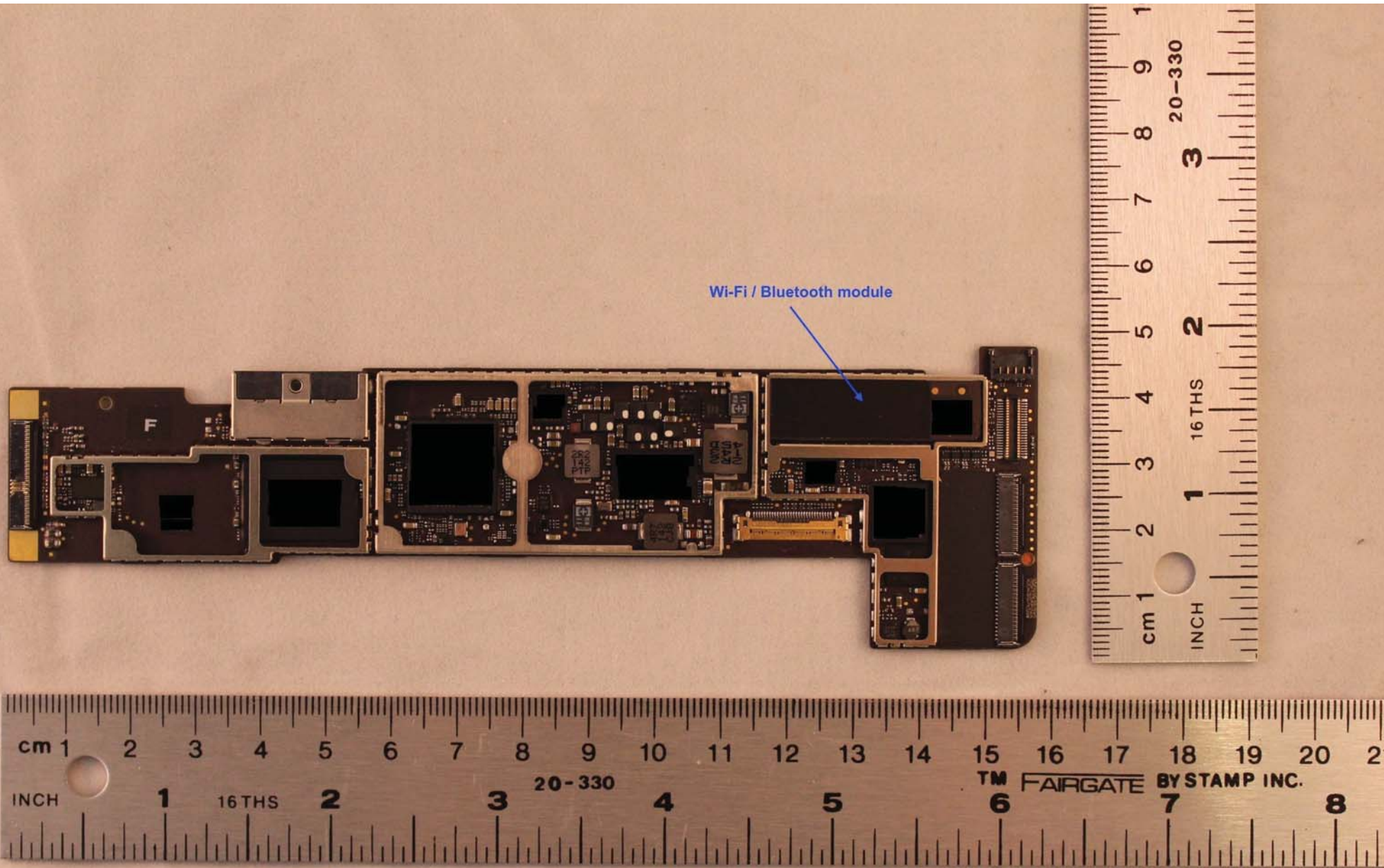
A1395 - Photo 7
Inside device housing

A1395 - Photo 9
Main logic board with shields - Front



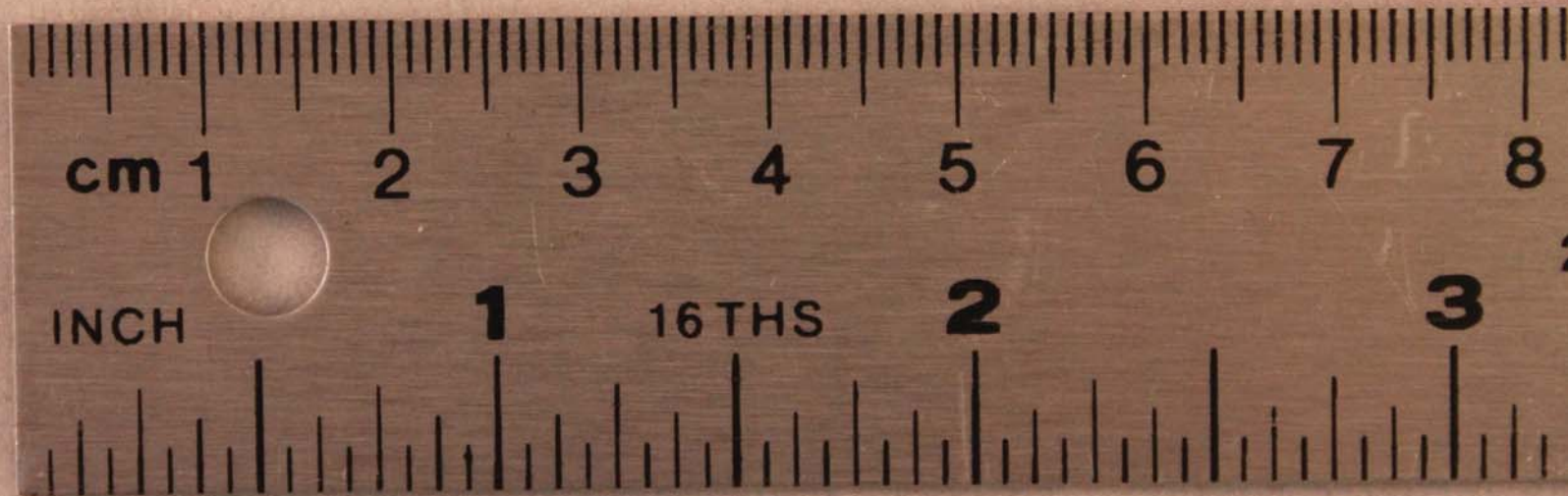
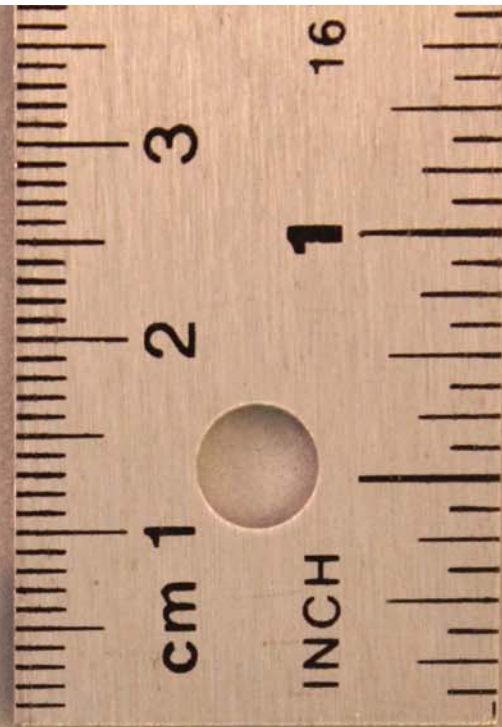


A1395 - Photo 10
Main logic board - Back



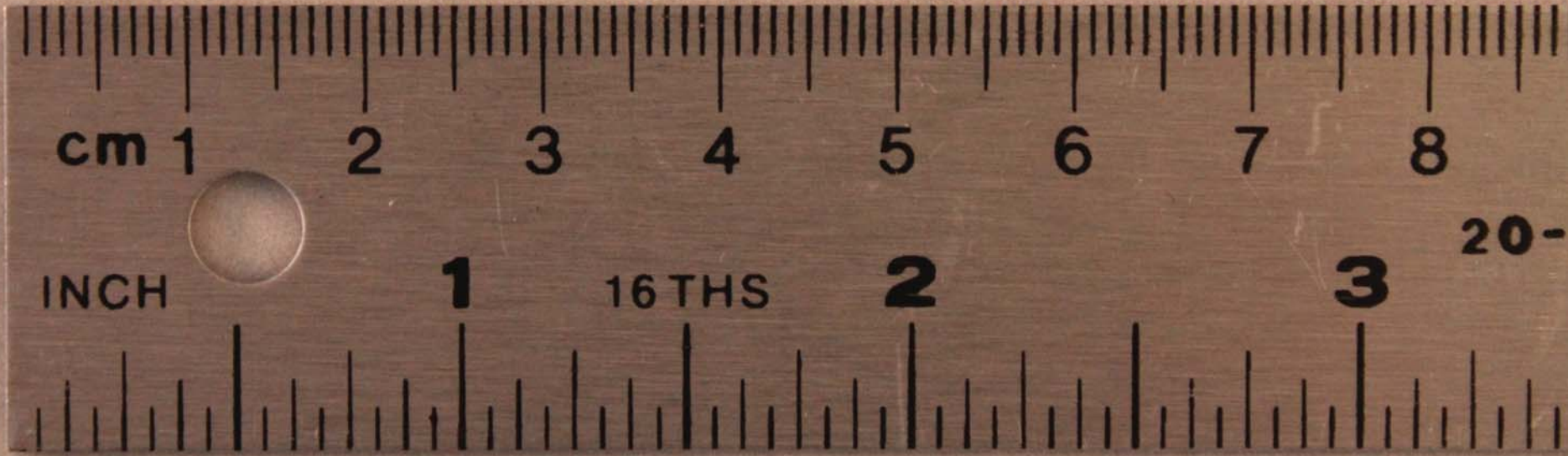
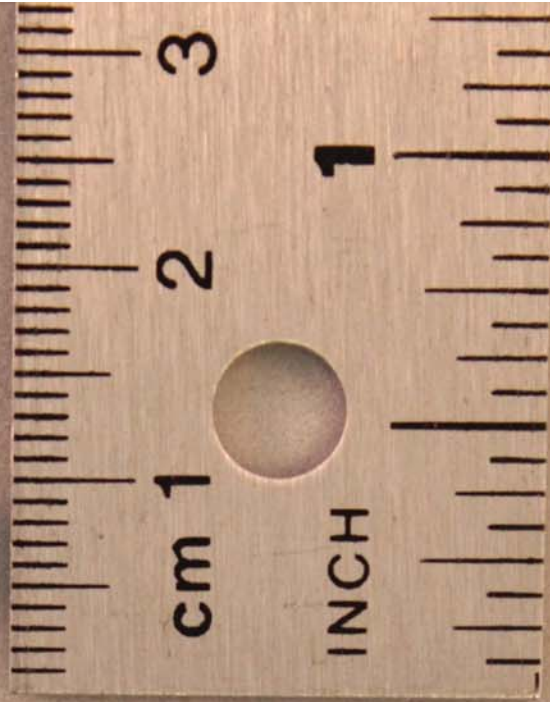
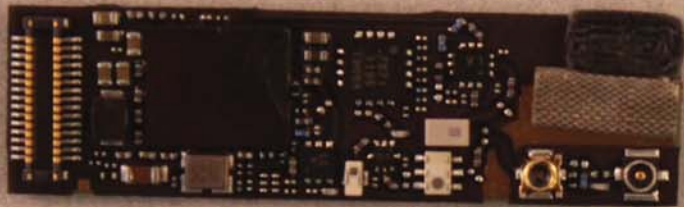
Wi-Fi / Bluetooth module

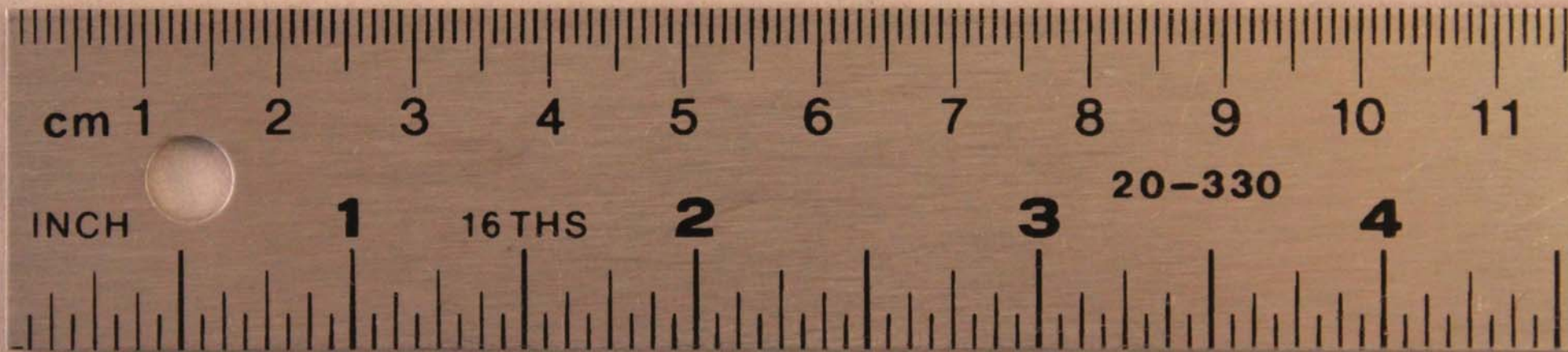
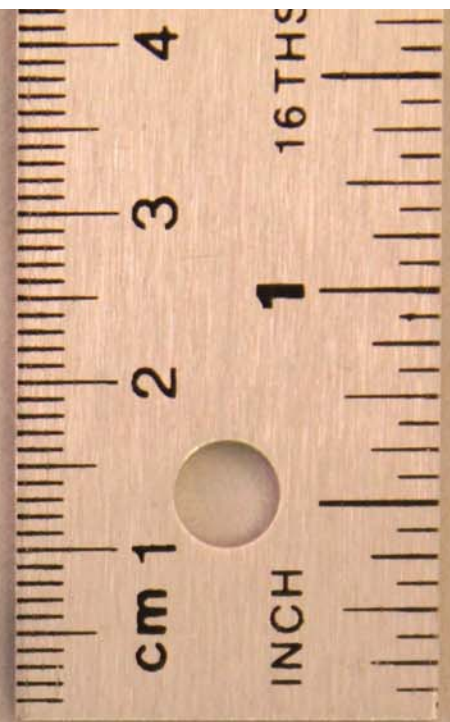
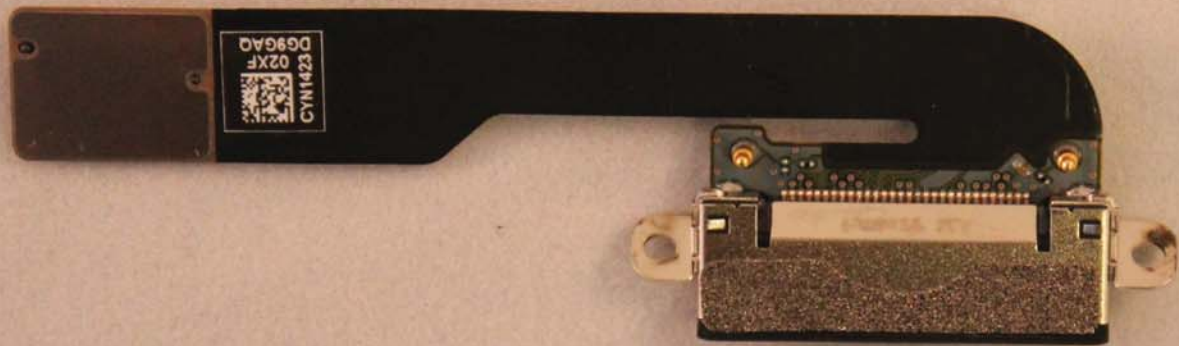
A1396 - Photo 11
Main logic board without shields
NOTE: Integrated Circuit marking intentionally covered for confidentiality



A1395 - Photo 12
Wi-Fi / Bluetooth module - Back

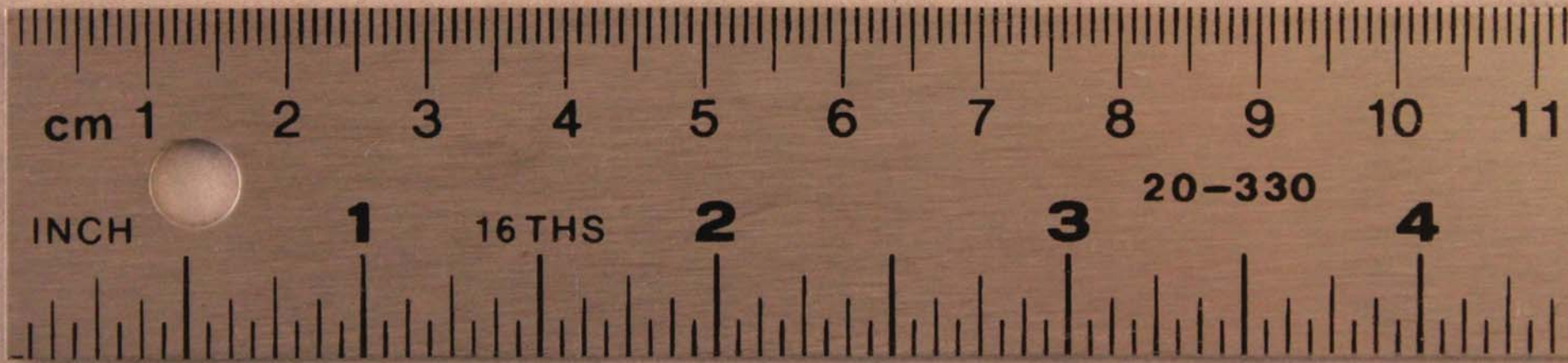
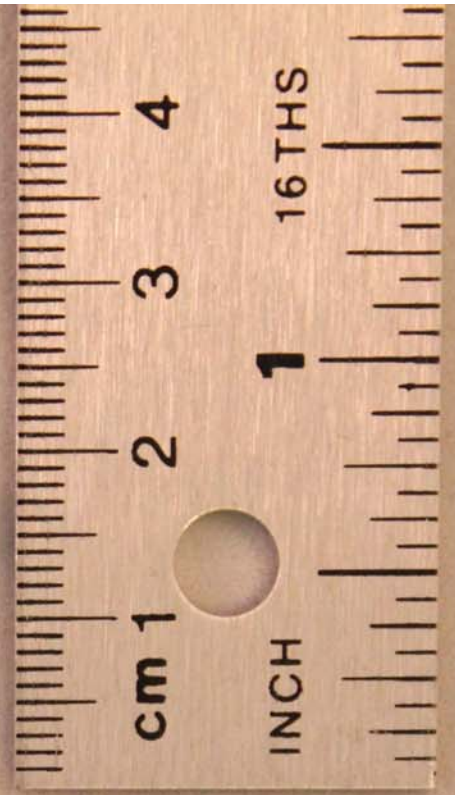
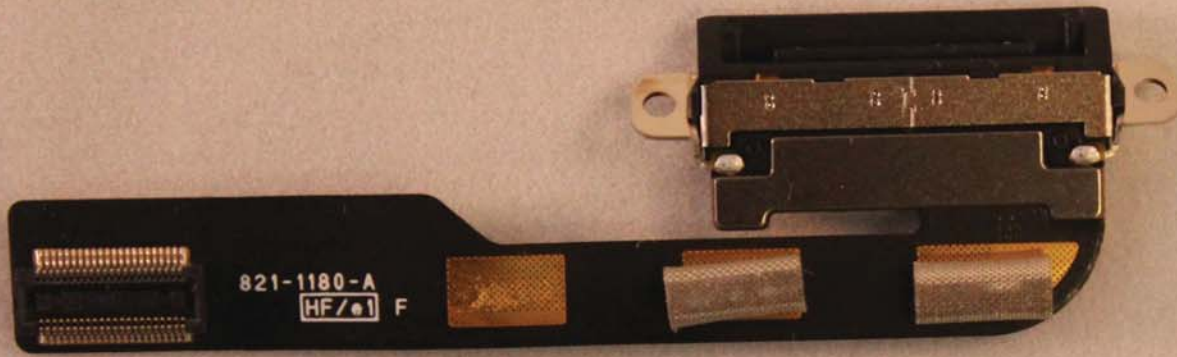
A1395 - Photo 13
Wi-Fi / Bluetooth module - Front

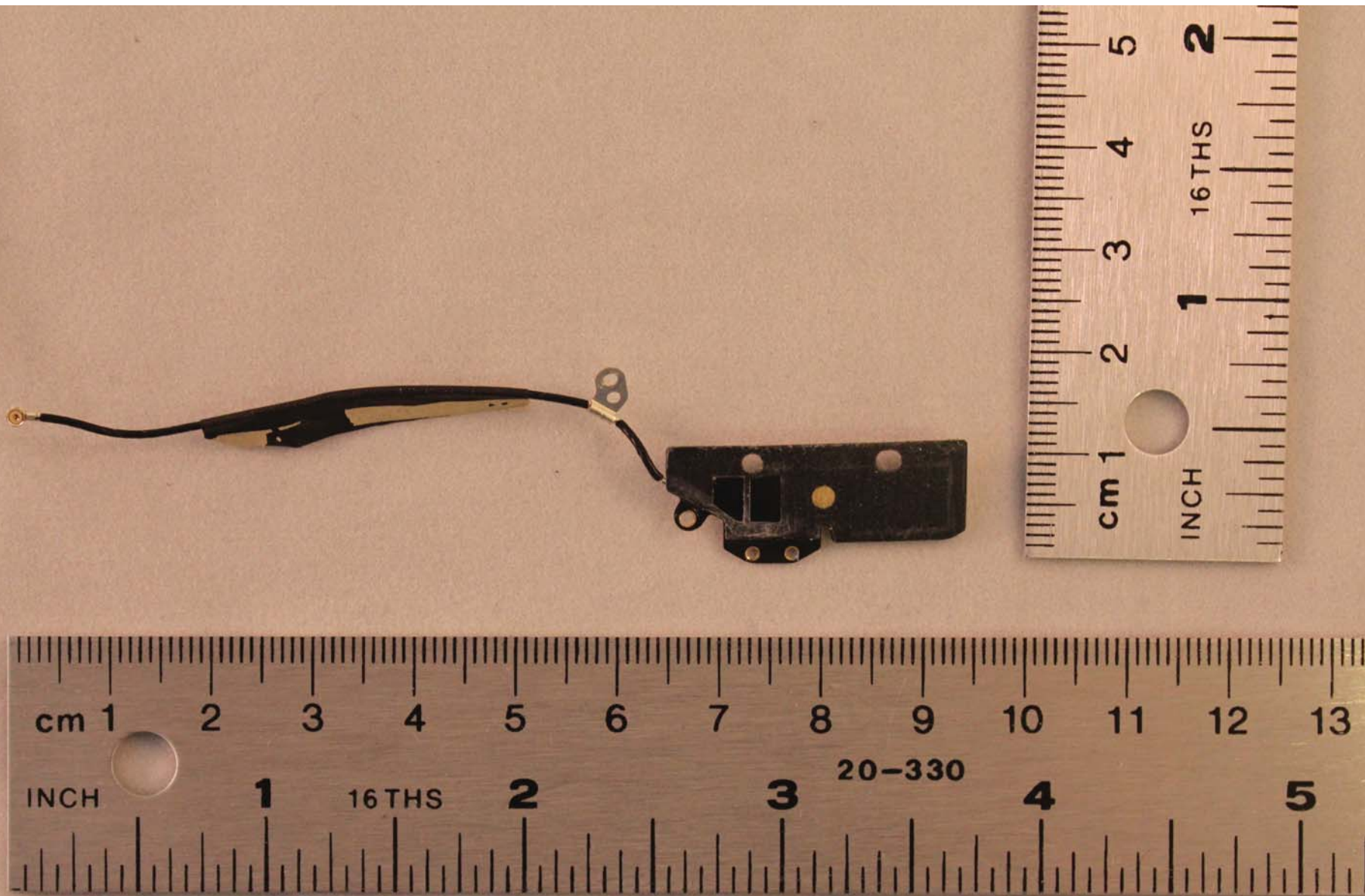




A1395 - Photo 14
30-pin I/O Connector - Front

A1395 - Photo 15
30-pin I/O Connector - Back



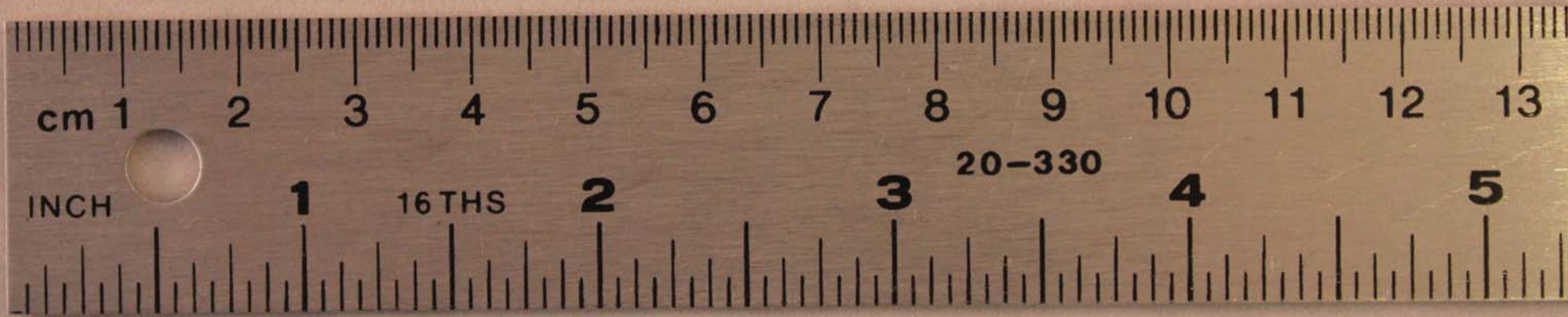
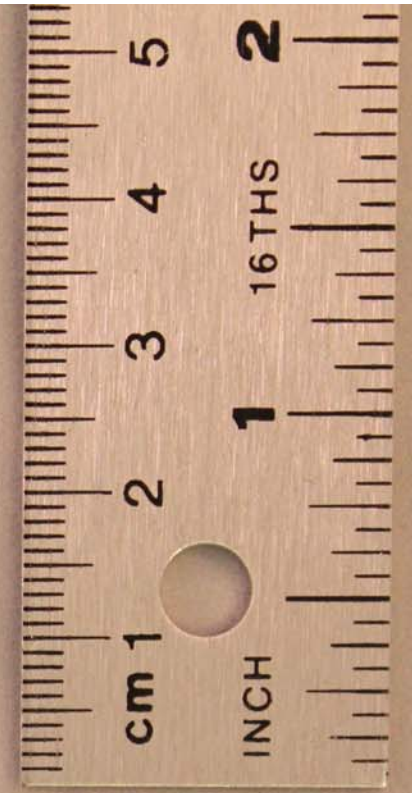
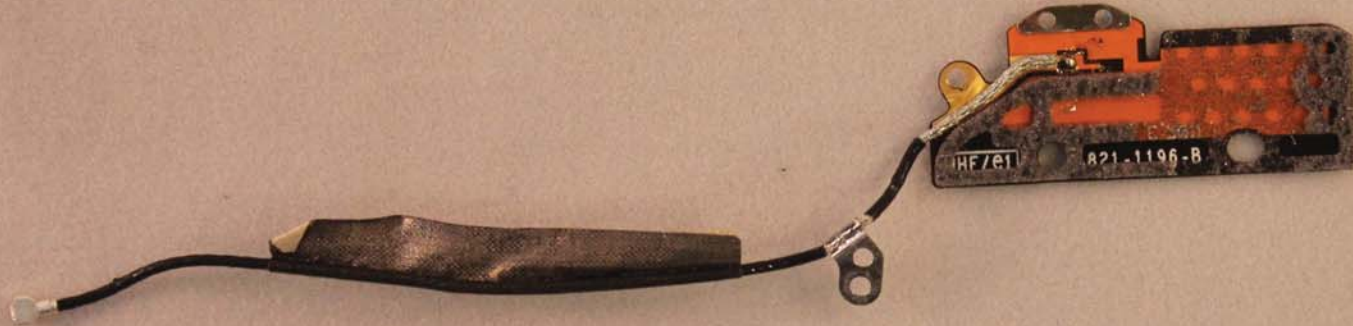


A1395 - Photo 16

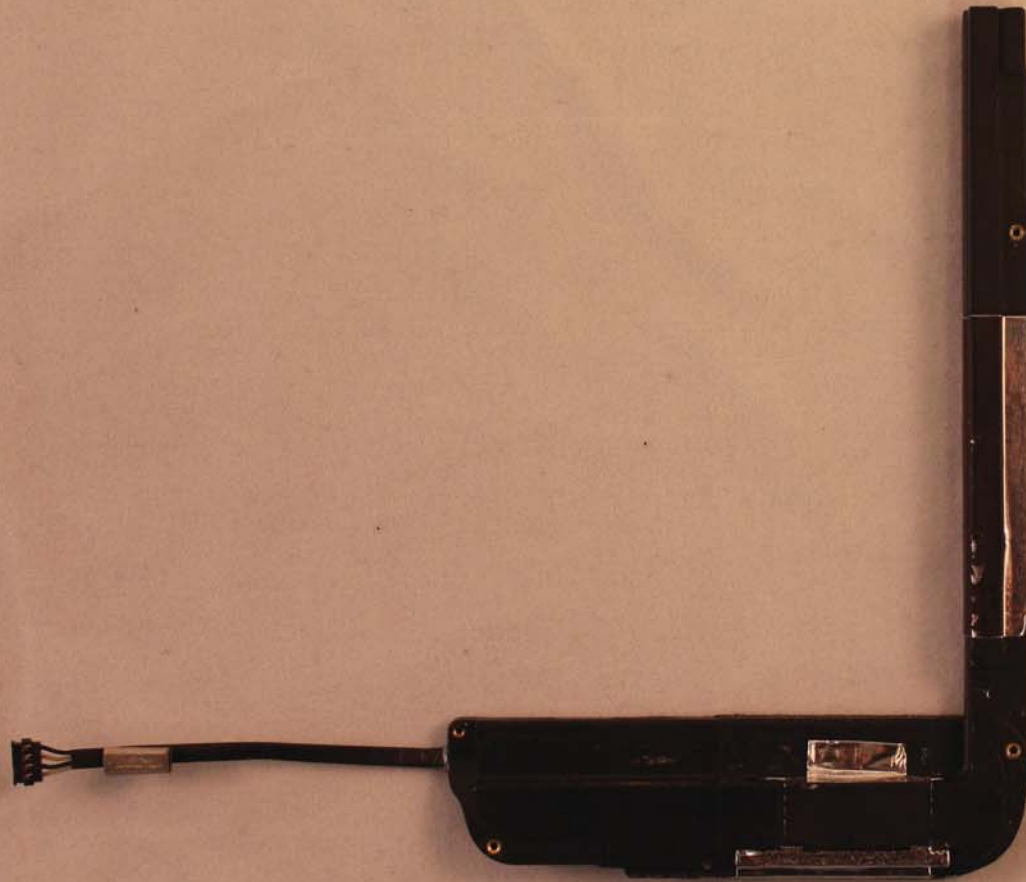
Wi-Fi / Bluetooth flex antenna structure - Front

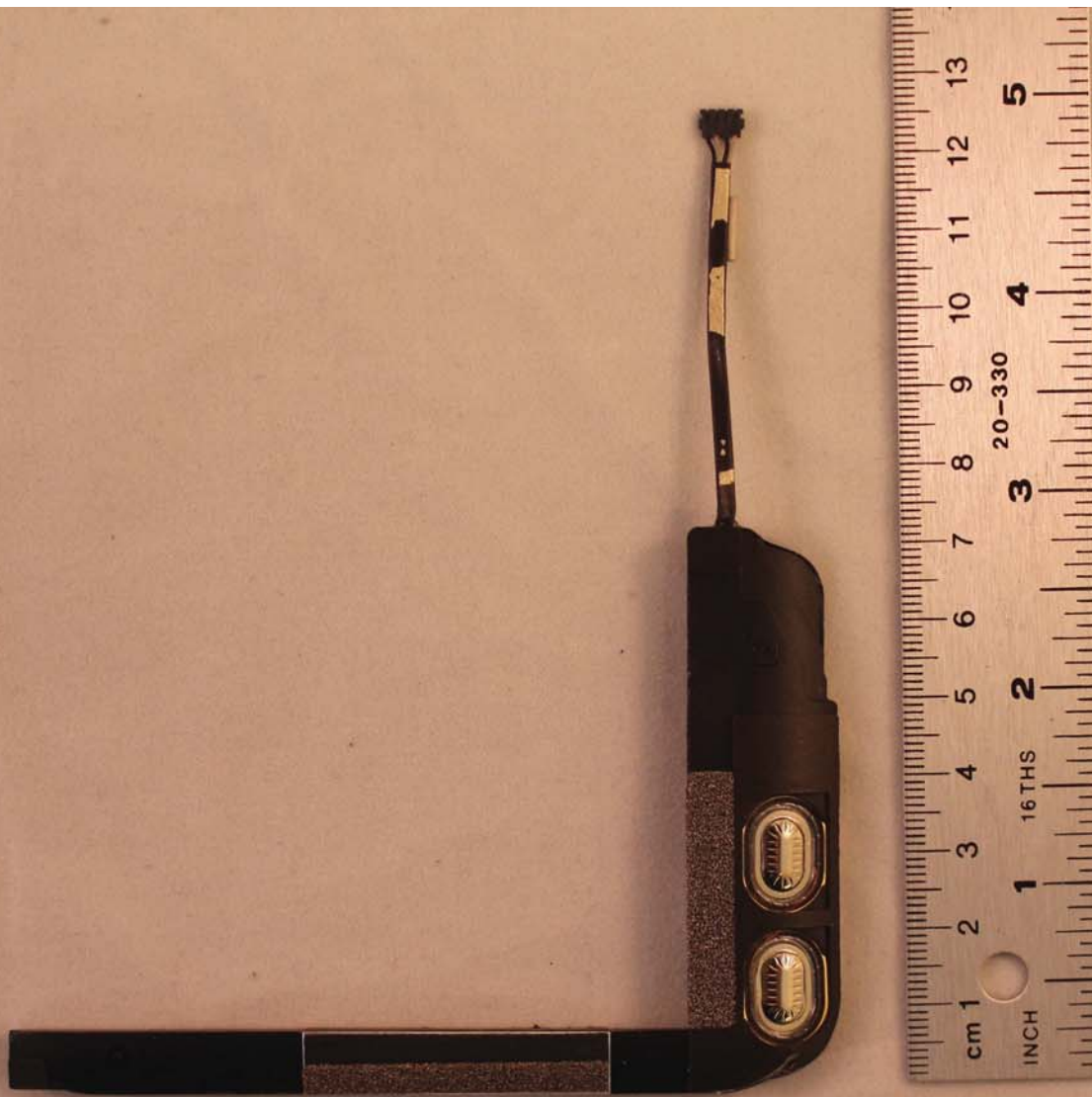
A1395 - Photo 17

Wi-Fi / Bluetooth flex antenna structure - Back



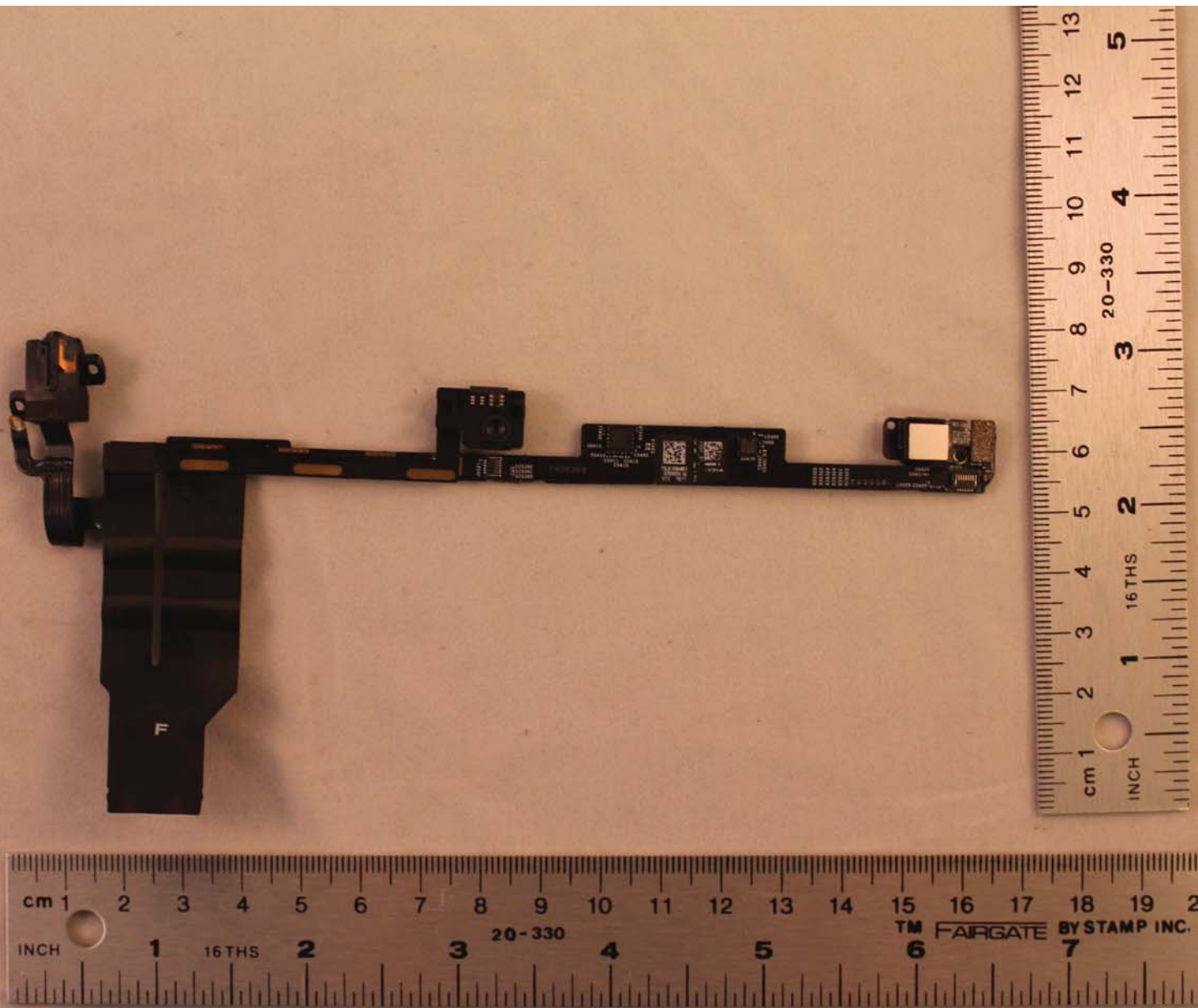
A1395 - Photo 18
Speaker structure - Front





A1395 - Photo 19
Speaker structure - Back

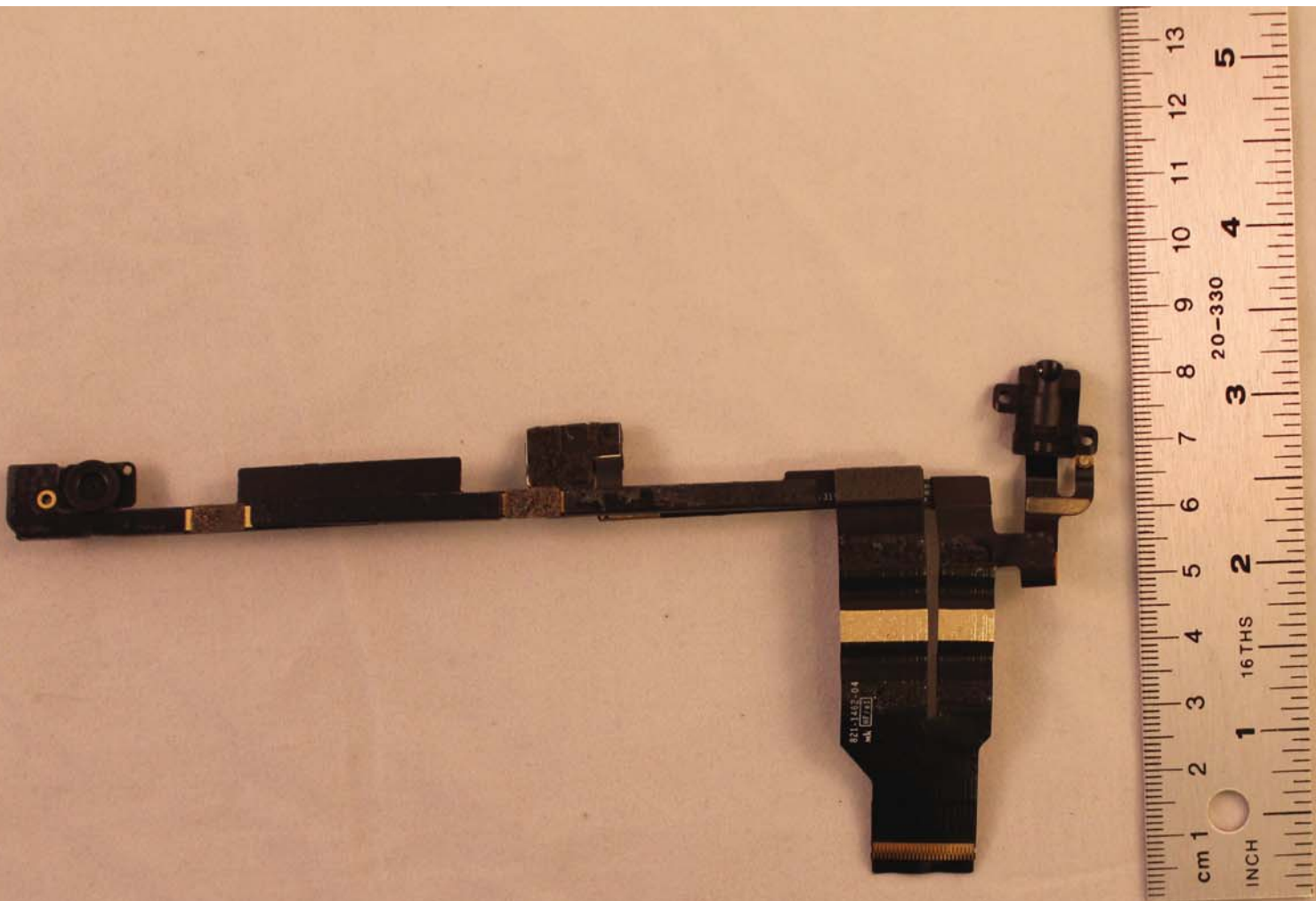




A1395 - Photo 20

Flex connector, Headphone jack, Front facing camera, Rear facing camera - Front

Apple Proprietary and Confidential



A1395 - Photo 21
Flex connector, Headphone jack, Front facing camera, Rear facing camera - Back