



PHOTO 1
TOP GLASS REMOVED



PHOTO 2
TOP SIDE TOUCHPAD/
DISPLAY



PHOTO 3
BOTTOM SIDE TOUCHPAD/
DISPLAY

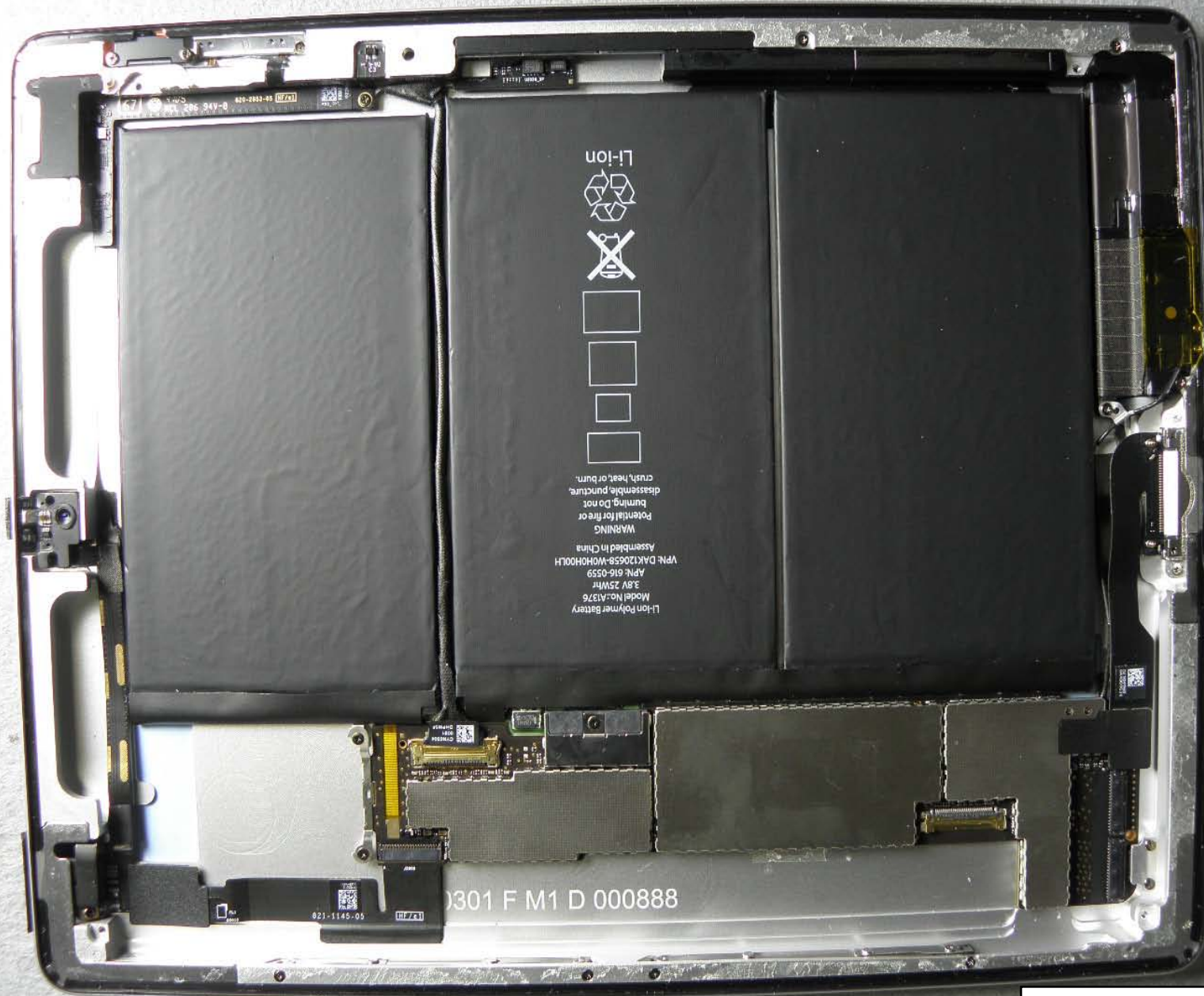
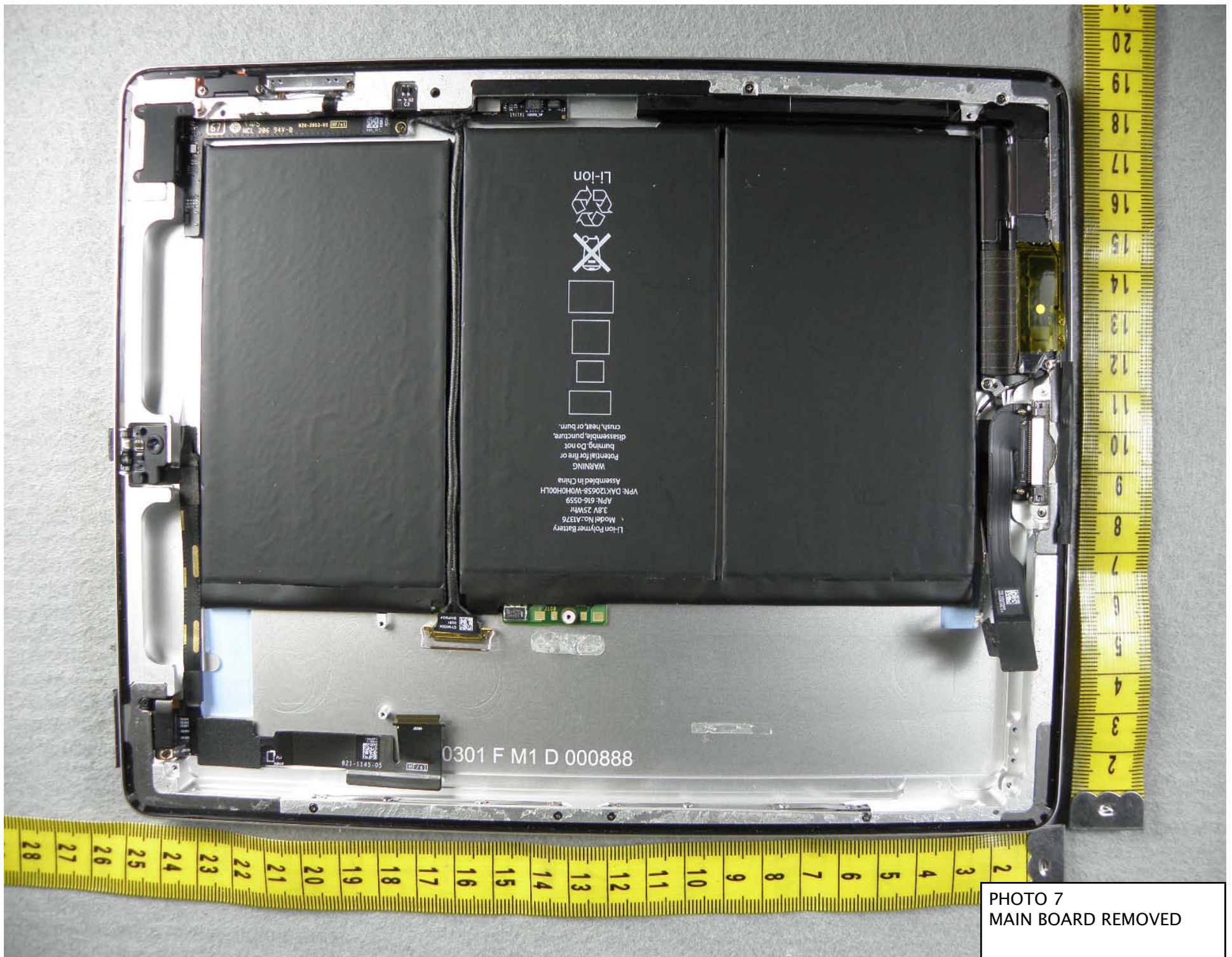


PHOTO 5
INSIDE BACK HOUSING



Li-ion Polymer Battery
Model No.:A1376
3.8V 25Wh
APN: 616-0559
VPN: DAK120658-W0H0H00LH
Assembled in China
WARNING
Potential for fire or
burning. Do not
disassemble, puncture,
crush, heat, or burn.

0301 F M1 D 000888

PHOTO 7
MAIN BOARD REMOVED

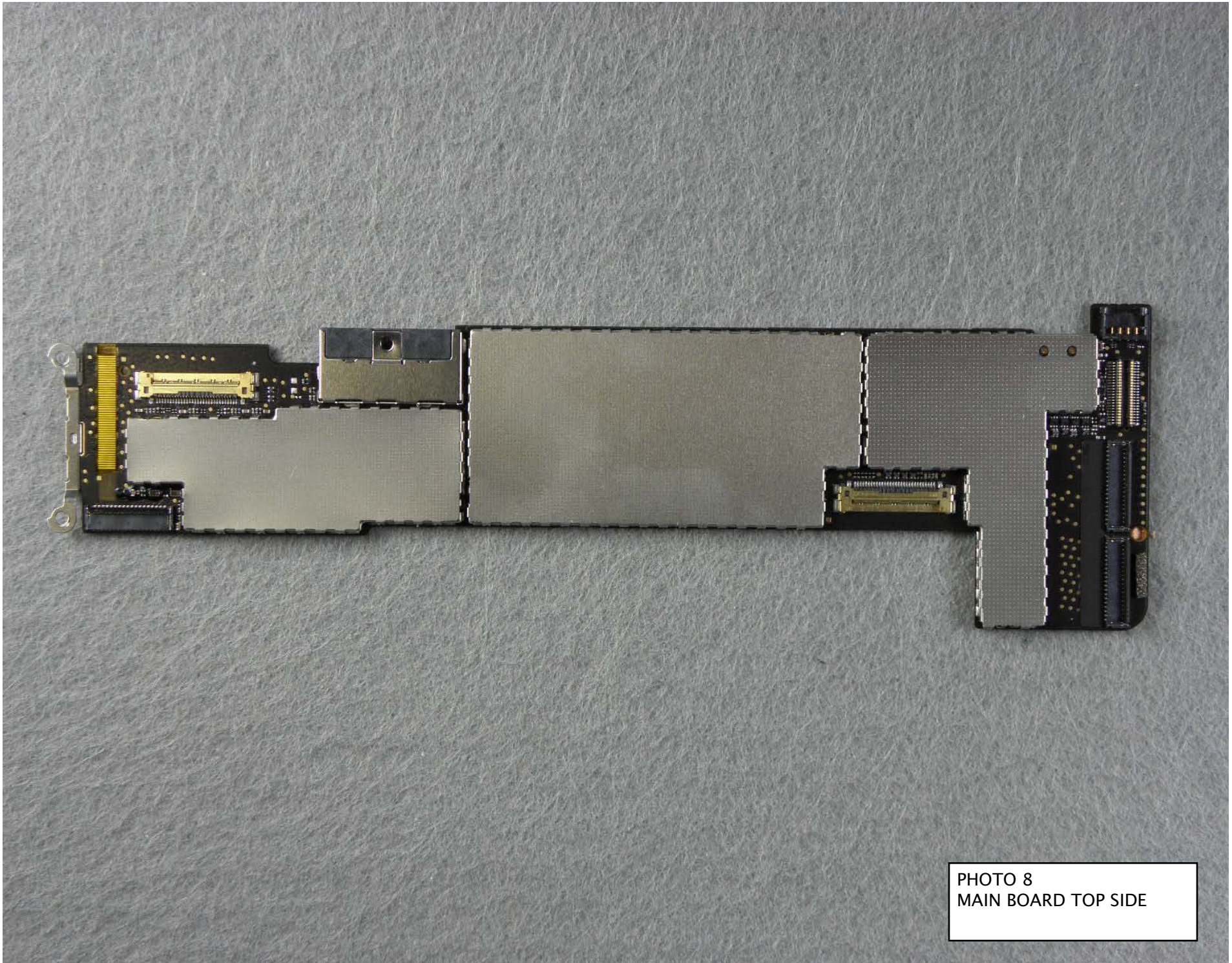


PHOTO 8
MAIN BOARD TOP SIDE

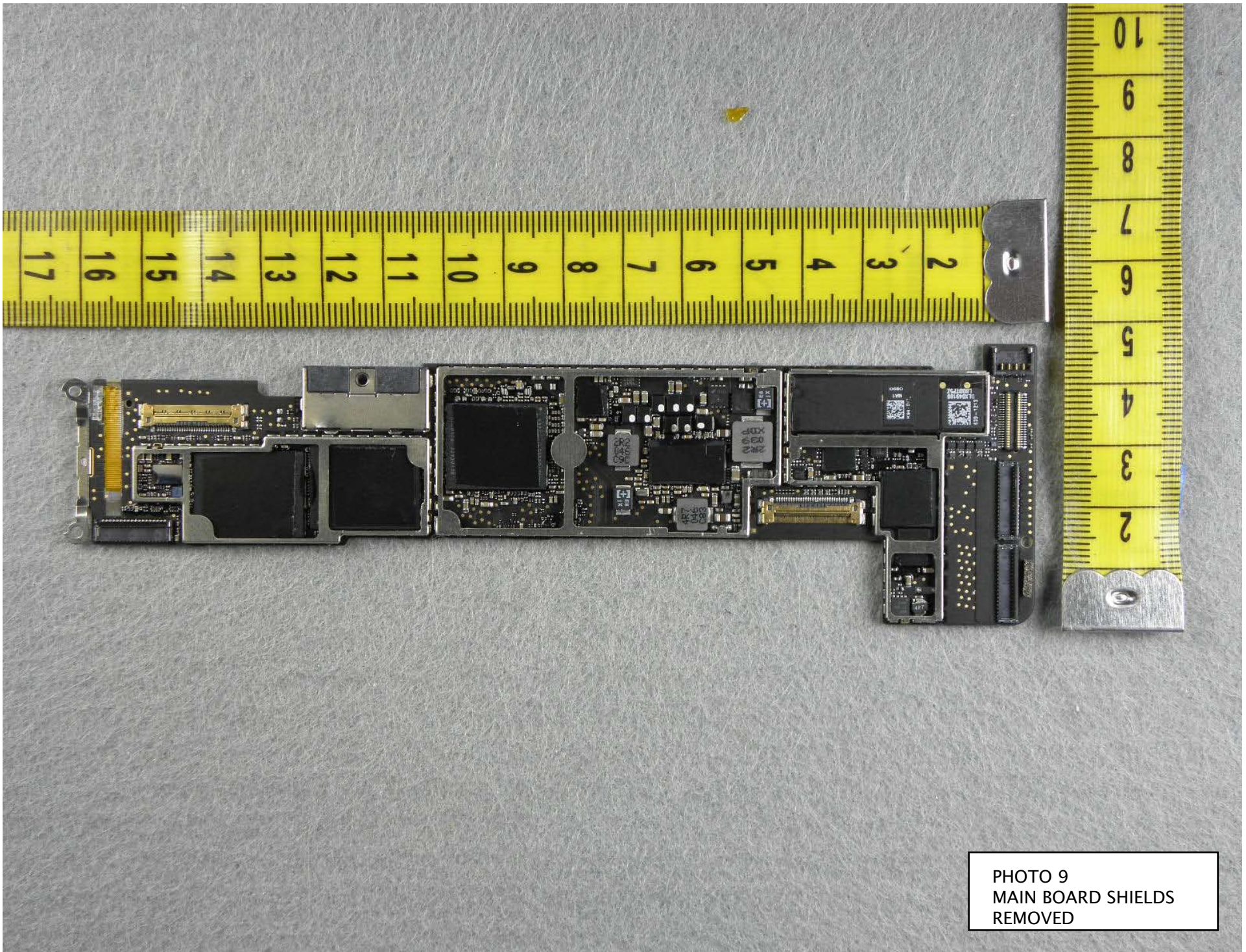


PHOTO 9
MAIN BOARD SHIELDS
REMOVED

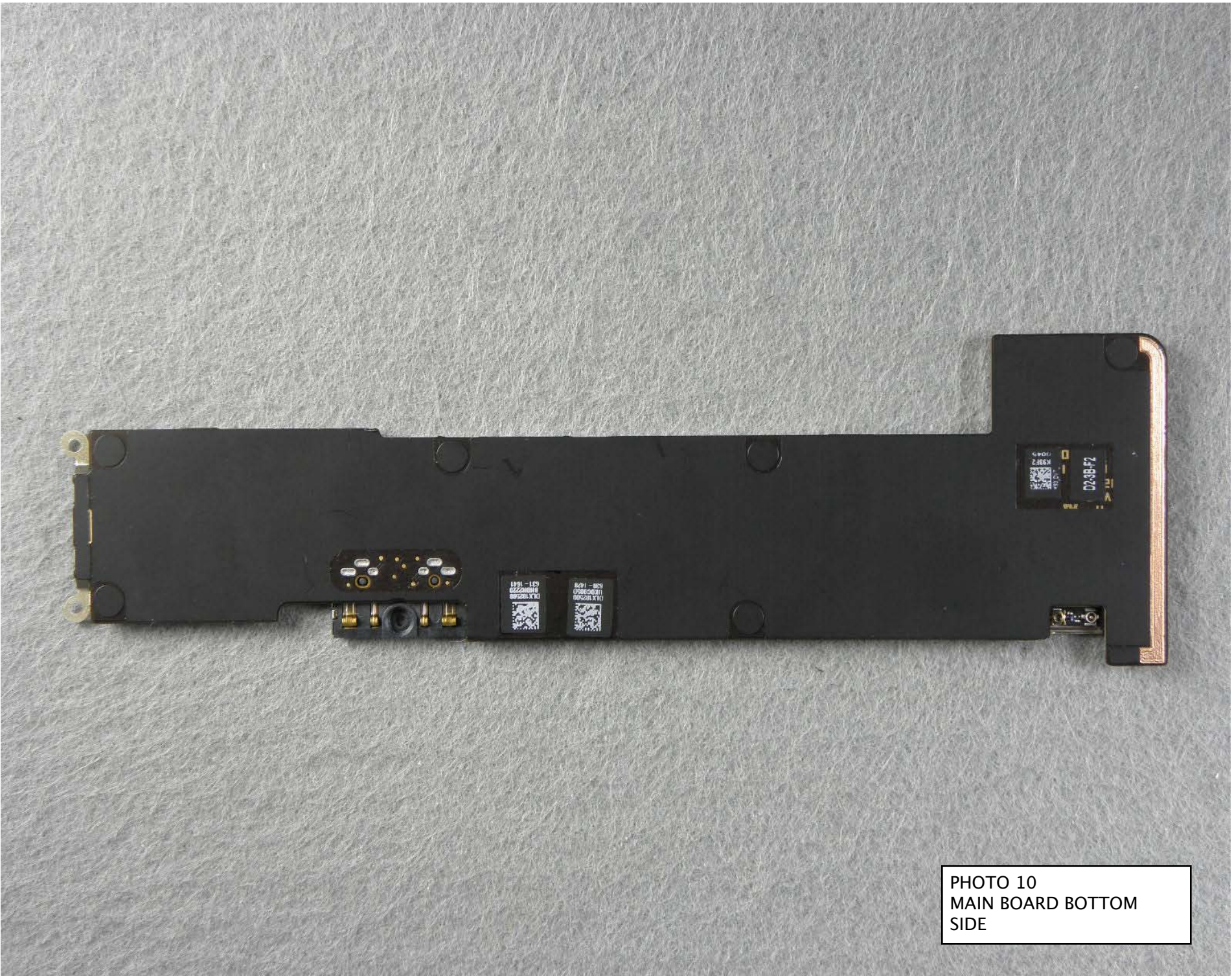


PHOTO 10
MAIN BOARD BOTTOM
SIDE

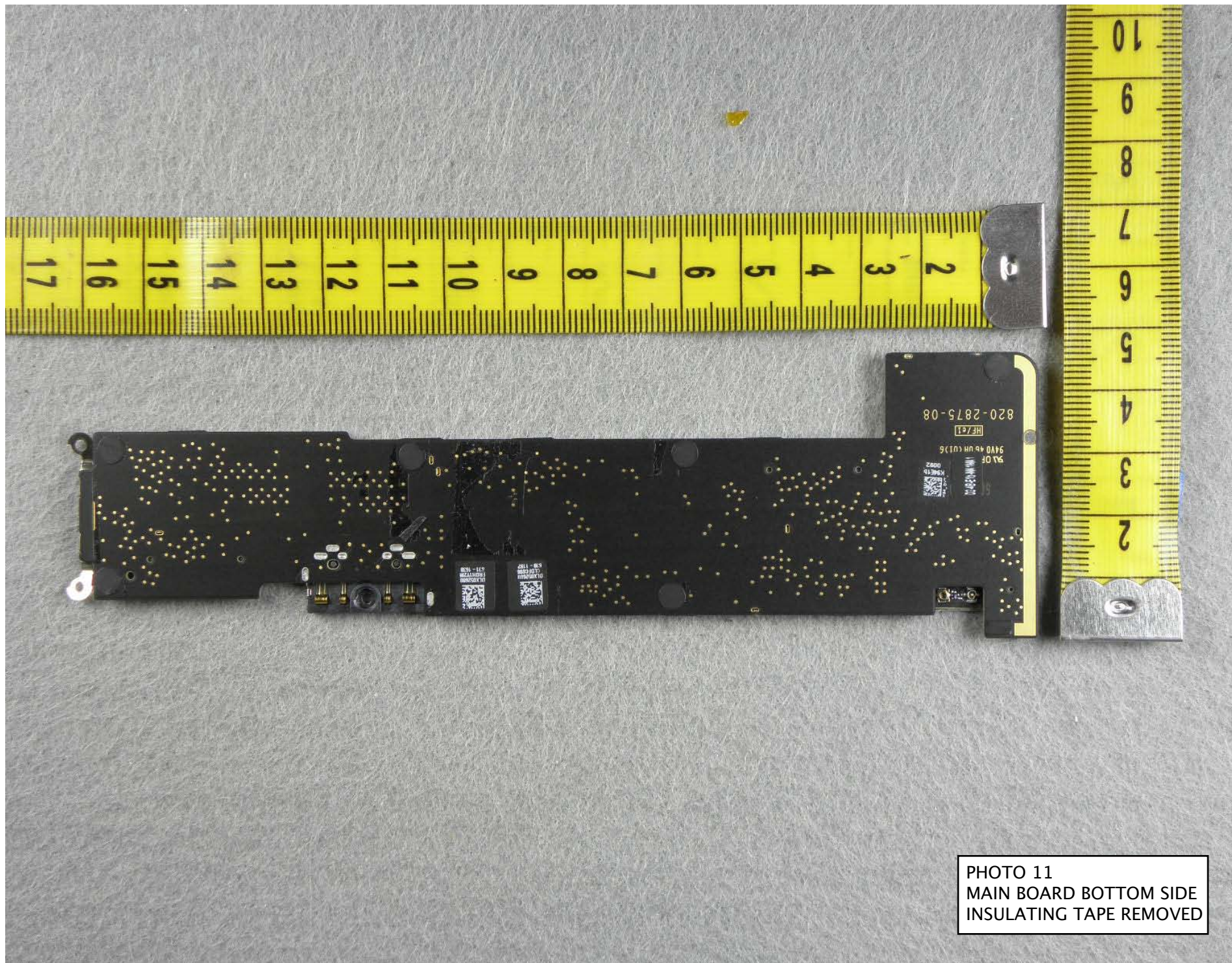


PHOTO 11
MAIN BOARD BOTTOM SIDE
INSULATING TAPE REMOVED

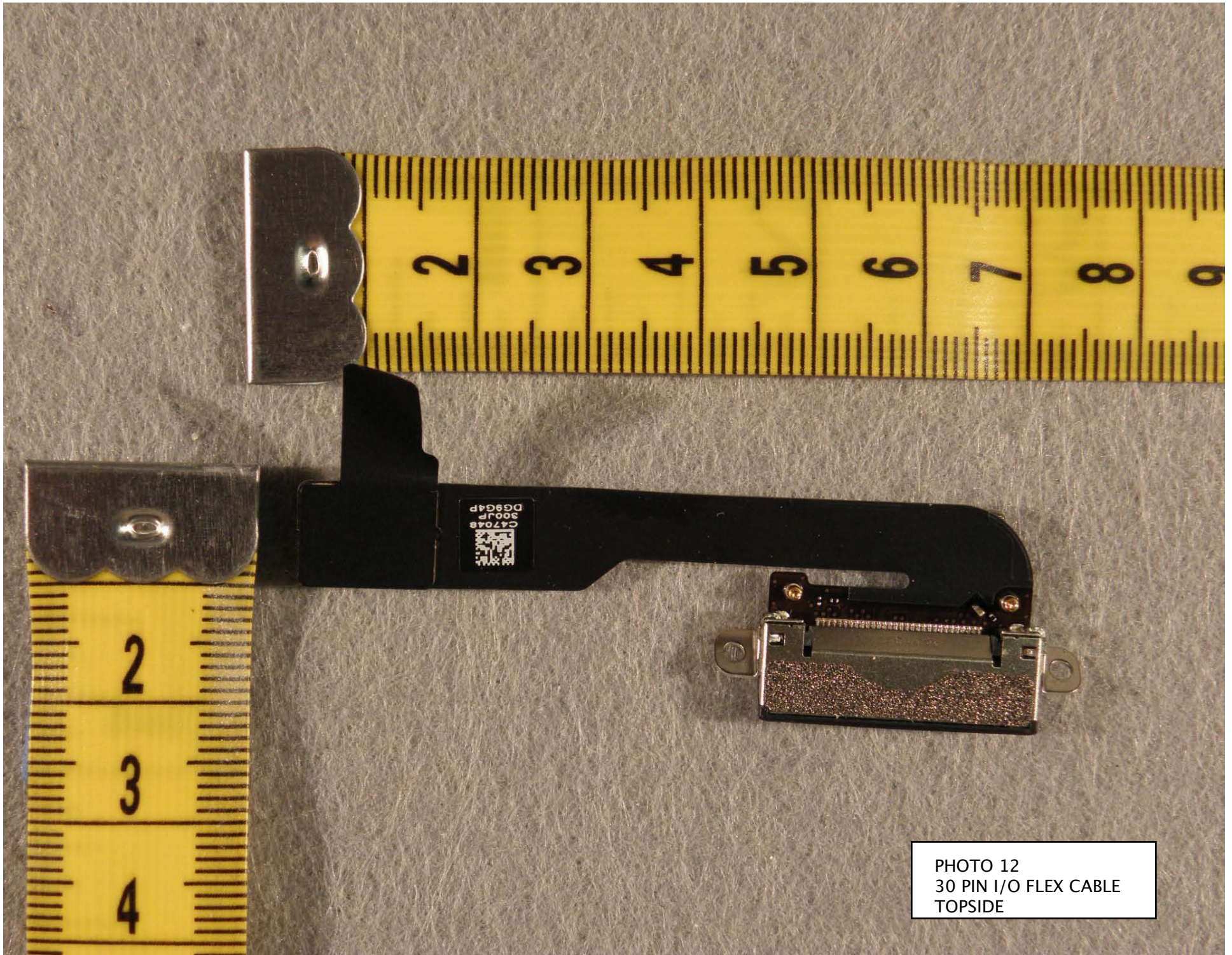


PHOTO 12
30 PIN I/O FLEX CABLE
TOPSIDE

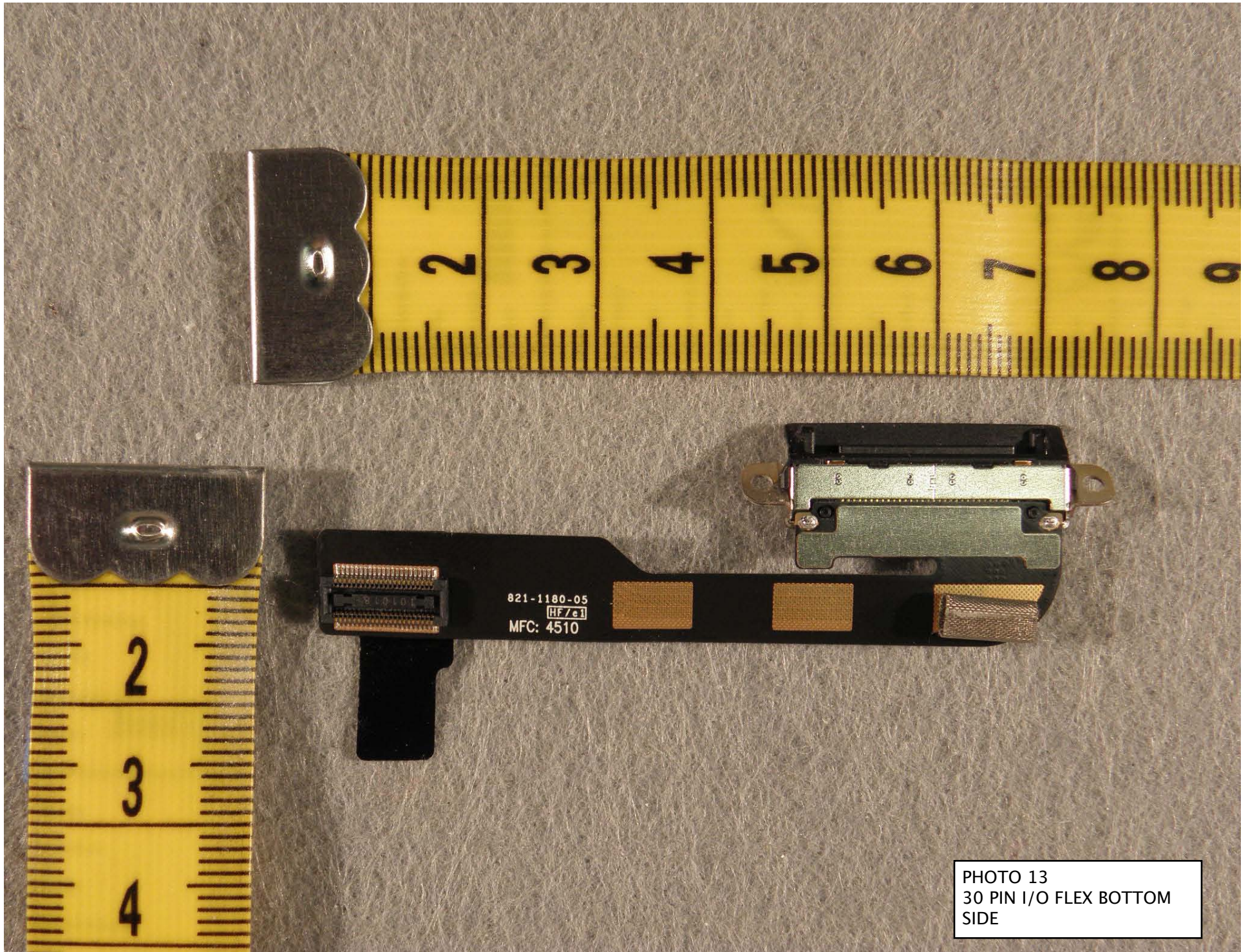


PHOTO 13
30 PIN I/O FLEX BOTTOM
SIDE

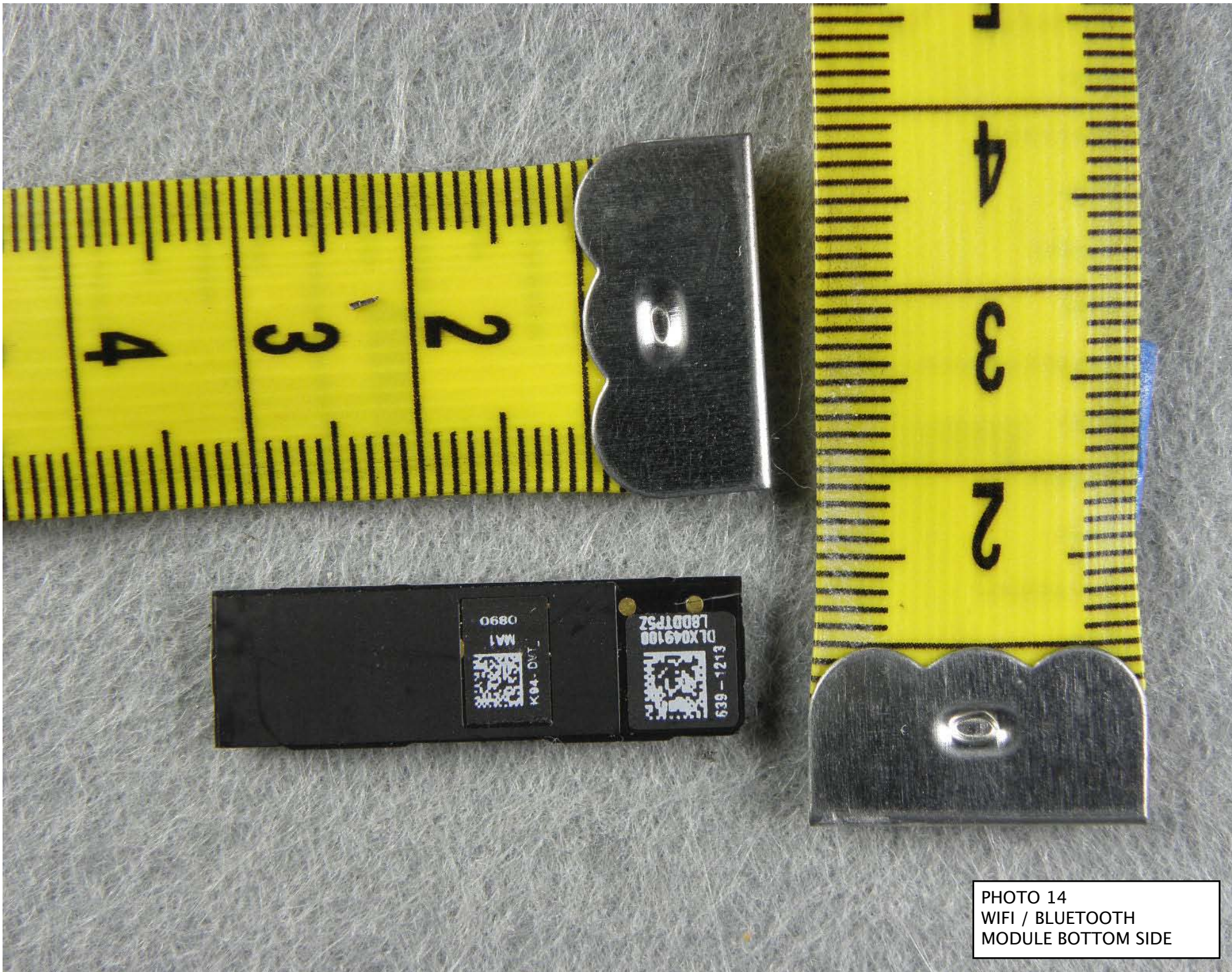


PHOTO 14
WIFI / BLUETOOTH
MODULE BOTTOM SIDE

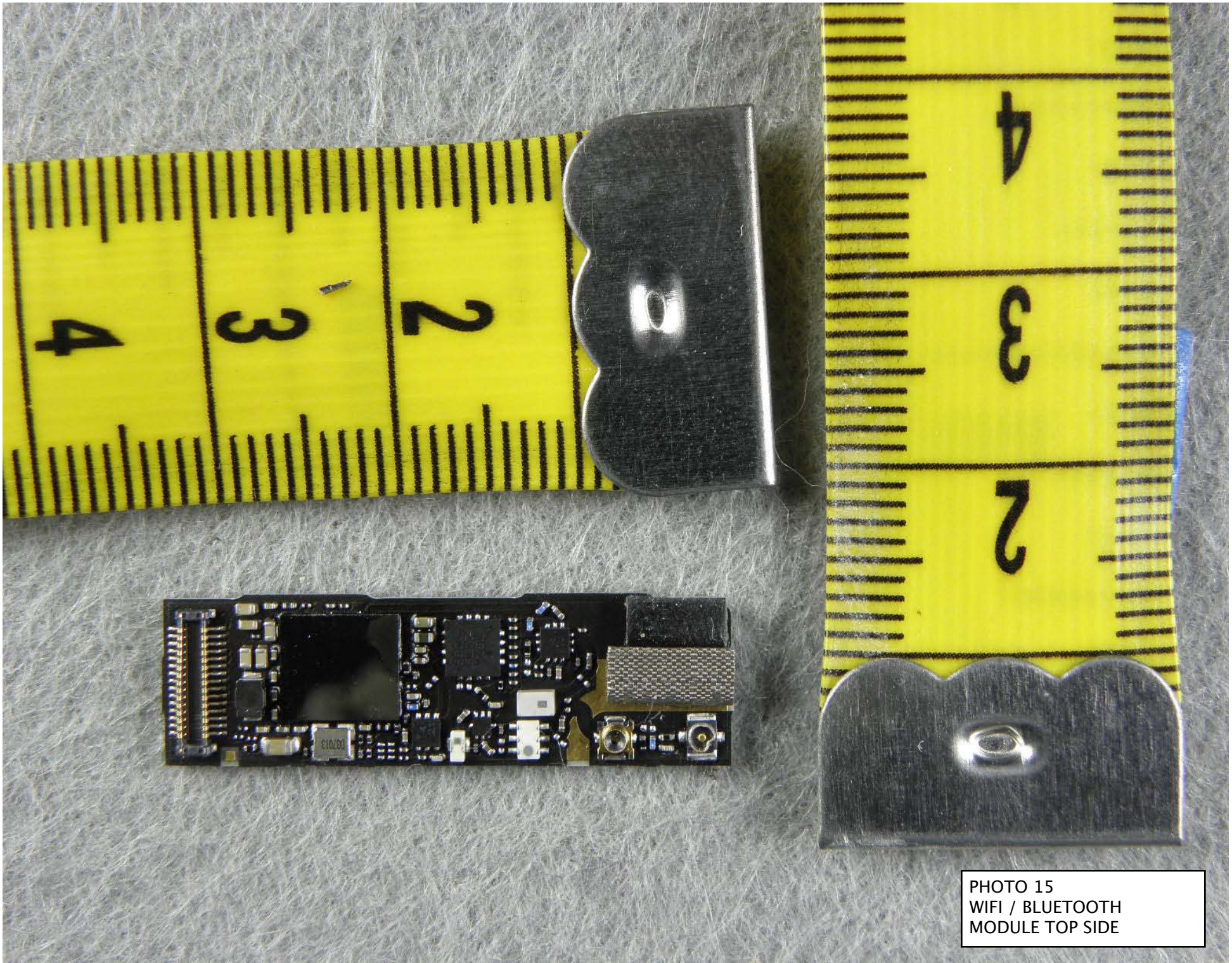


PHOTO 15
WIFI / BLUETOOTH
MODULE TOP SIDE



PHOTO 16
WIFI / BLUETOOTH ANTENNA
FLEX TOP SIDE

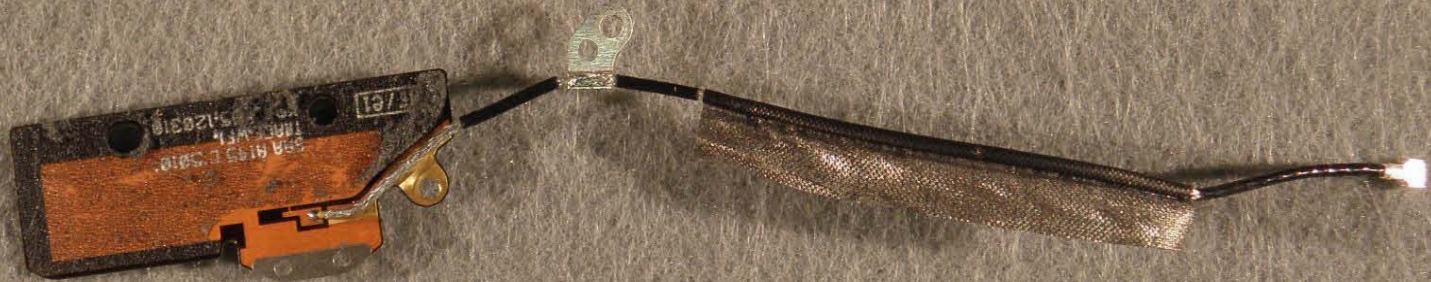


PHOTO 17
WIFI / BLUETOOTH ANTENNA
FLEX BOTTOM SIDE