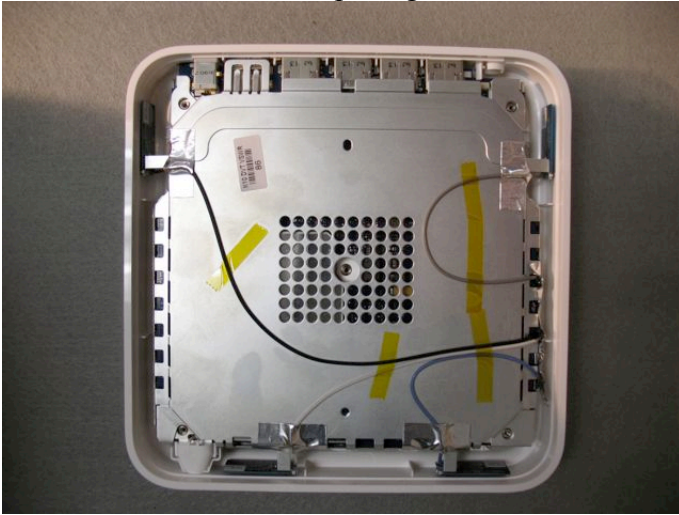
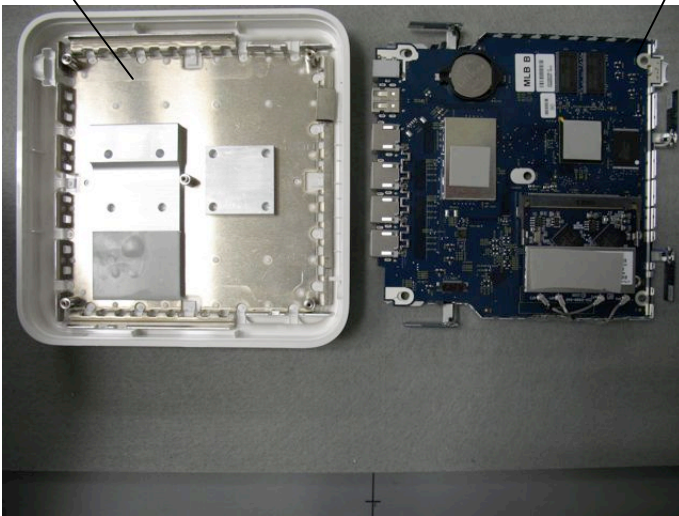


Bottom cover removed exposing enclosure's bottom shield and internal assembly

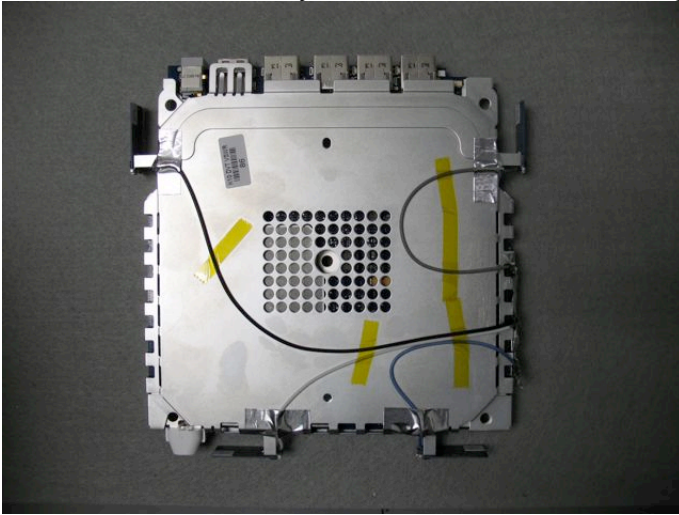


Plastic enclosure with top shield

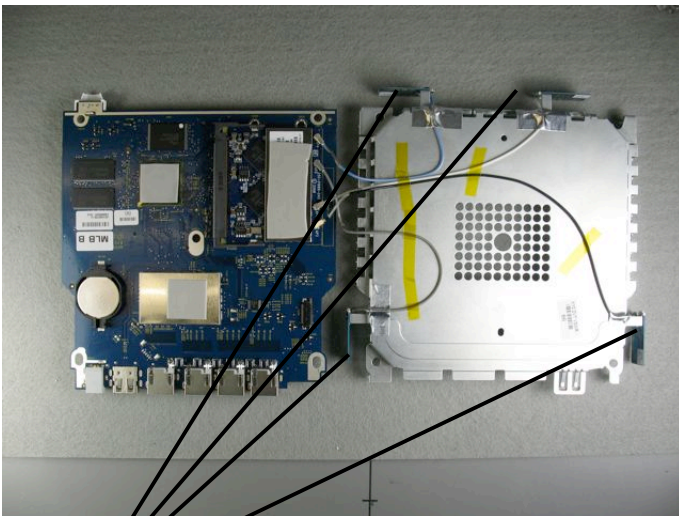
Main Logic Board / Bottom Shield assembly



Bottom Shield assembly with antennas and Main Logic Board



Main Logic Board removed from Bottom Shield assembly showing antenna and RF cables.



Location of Four Antennas

Four Antennas

