

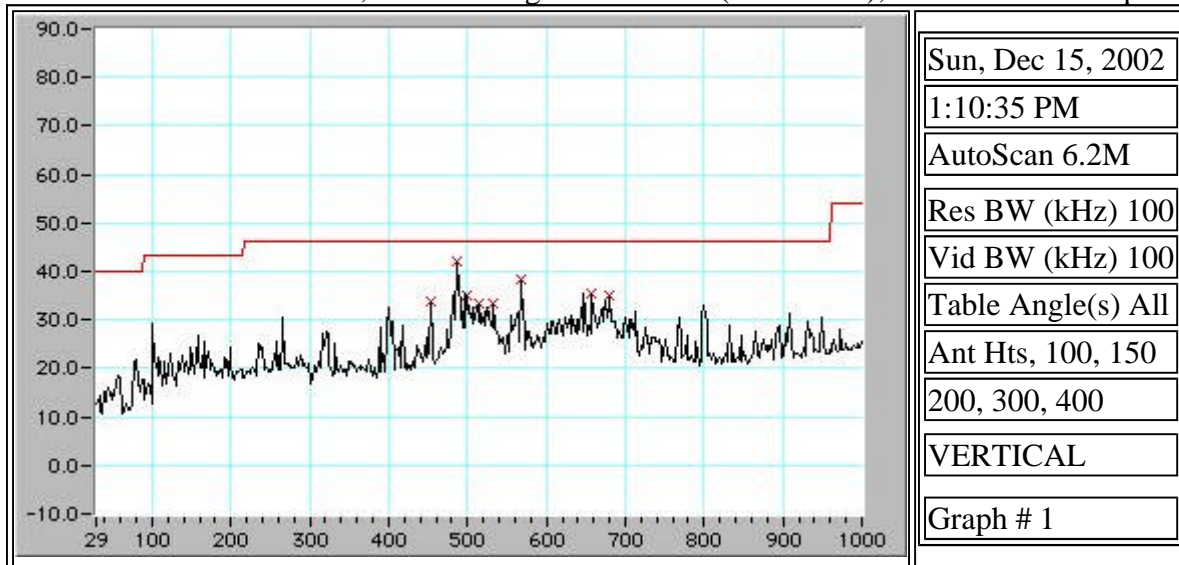
[Return to List of Scans](#) [Previous Scan](#) [Next Scan](#)

Evelyn 1

FCC Class B

P50

VERTICAL Patch Antenna, Transmitting at Channel 1 (2412 MHz), Data Rate = 1 Mbps



Frequency MHz	Level dBuV/m	Limit dBuV/m	Delta dB	Ht. m	Angle Deg	Raw dBuV/m	Ant. dB	Cable dB	Amp dB	All Factors dB
453.20	33.9	46.0	-12.1	V		63.40	16.80	2.58	48.84	29.46
486.28	41.9	46.0	-4.1	V		70.29	17.53	2.69	48.57	28.35
499.91	35.1	46.0	-10.9	V		63.16	17.60	2.74	48.39	28.05
515.47	33.5	46.0	-12.5	V		61.53	17.51	2.80	48.32	28.01
532.99	33.3	46.0	-12.7	V		61.15	17.66	2.85	48.31	27.80
568.01	38.3	46.0	-7.7	V		64.94	18.64	2.93	48.21	26.63
657.52	35.6	46.0	-10.4	V		62.06	18.90	3.18	48.51	26.43
680.87	35.0	46.0	-11.0	V		61.44	19.00	3.24	48.69	26.44

Equipment Description	Model Number	Serial Number	Last Calibration	Next Calibration
Spectrum Analyzer	R&S ESIB 40	100105	23 May 2002	23 May 2003
Receiver	R&S ESIB 40	100105	23 May 2002	23 May 2003
Spectrum Analyzer	HP 8566	E4662_E4663	7 May 2002	7 May 2003
Antenna	CBL6112B	2517	14 May 2002	14 May 2003
Antenna	Horn Antenna/3115	9205-3852	5 Sep 2000	5 Sep 2003
Amplifier	Penstock Amp	103	14 Jan 2002	14 Jan 2003
Amplifier	HP 8449B (1-26.5 GHz)	3008A00713	4 Mar 2002	4 Mar 2003
Cable	Tower 1 Cable	primary	16 Aug 2002	16 Aug 2003
Cable	Huber & Suhner SF106	0.29	26 Apr 2002	26 Apr 2003

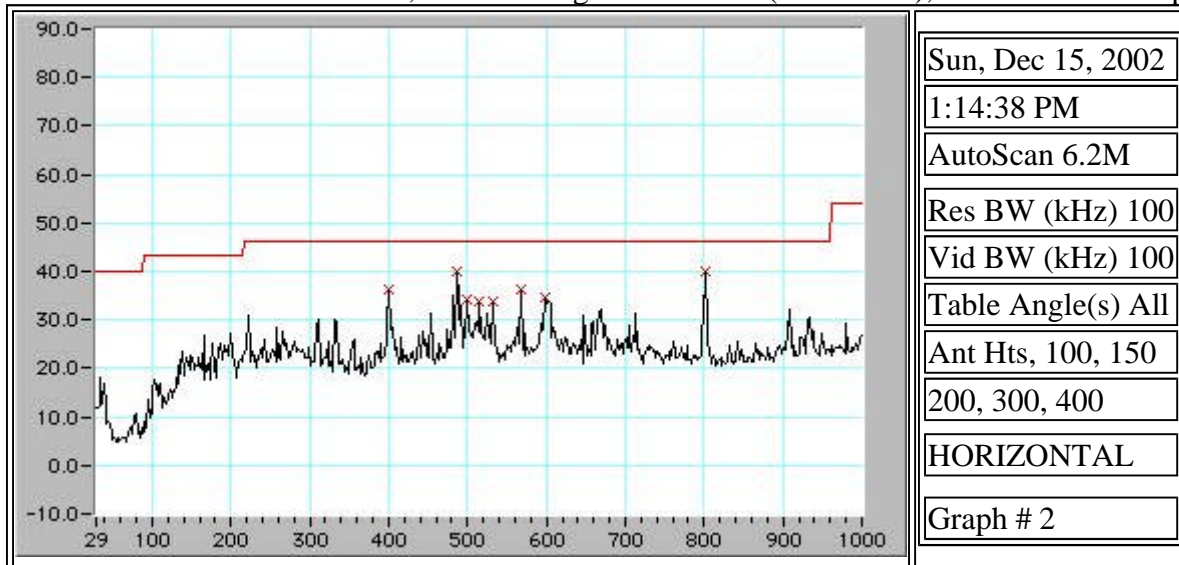
[Return to List of Scans](#) [Previous Scan](#) [Next Scan](#)

Evelyn 1

FCC Class B

P50

HORIZONTAL Patch Antenna, Transmitting at Channel 1 (2412 MHz), Data Rate = 1 Mbps



Frequency MHz	Level dBuV/m	Limit dBuV/m	Delta dB	Ht. m	Angle Deg	Raw dBuV/m	Ant. dB	Cable dB	Amp dB	All Factors dB
400.67	36.5	46.0	-9.5	H		67.80	15.57	2.42	49.31	31.32
486.28	39.9	46.0	-6.1	H		68.31	17.50	2.69	48.57	28.38
499.91	34.1	46.0	-11.9	H		62.15	17.60	2.74	48.39	28.05
515.47	33.7	46.0	-12.3	H		61.70	17.50	2.80	48.32	28.02
531.04	33.9	46.0	-12.1	H		61.78	17.62	2.84	48.31	27.85
568.01	36.4	46.0	-9.6	H		62.76	18.94	2.93	48.21	26.33
597.20	34.6	46.0	-11.4	H		61.17	18.64	3.01	48.18	26.53
801.52	40.0	46.0	-6.0	H		66.07	19.90	3.54	49.55	26.11

Equipment Description	Model Number	Serial Number	Last Calibration	Next Calibration
Spectrum Analyzer	R&S ESIB 40	100105	23 May 2002	23 May 2003
Receiver	R&S ESIB 40	100105	23 May 2002	23 May 2003
Spectrum Analyzer	HP 8566	E4662_E4663	7 May 2002	7 May 2003
Antenna	CBL6112B	2517	14 May 2002	14 May 2003
Antenna	Horn Antenna/3115	9205-3852	5 Sep 2000	5 Sep 2003
Amplifier	Penstock Amp	103	14 Jan 2002	14 Jan 2003
Amplifier	HP 8449B (1-26.5 GHz)	3008A00713	4 Mar 2002	4 Mar 2003
Cable	Tower 1 Cable	primary	16 Aug 2002	16 Aug 2003
Cable	Huber & Suhner SF106	0.29	26 Apr 2002	26 Apr 2003

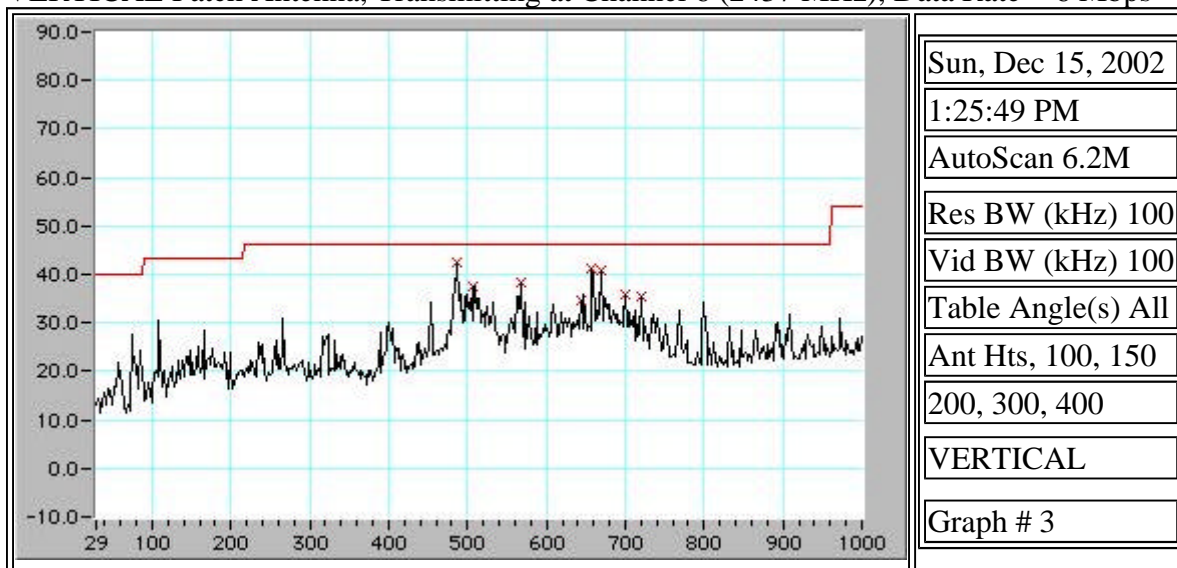
[Return to List of Scans](#) [Previous Scan](#) [Next Scan](#)

Evelyn 1

FCC Class B

P50

VERTICAL Patch Antenna, Transmitting at Channel 6 (2437 MHz), Data Rate = 6 Mbps



Frequency MHz	Level dBuV/m	Limit dBuV/m	Delta dB	Ht. m	Angle Deg	Raw dBuV/m	Ant. dB	Cable dB	Amp dB	All Factors dB
486.28	42.5	46.0	-3.5	V		70.81	17.53	2.69	48.57	28.35
505.74	37.7	46.0	-8.3	V		65.64	17.60	2.76	48.32	27.96
568.01	38.3	46.0	-7.7	V		64.98	18.64	2.93	48.21	26.63
643.90	34.7	46.0	-11.3	V		60.93	19.00	3.14	48.41	26.27
657.52	41.1	46.0	-4.9	V		67.58	18.90	3.18	48.51	26.43
669.20	40.8	46.0	-5.2	V		67.26	18.90	3.21	48.60	26.49
700.33	35.7	46.0	-10.3	V		62.10	19.10	3.29	48.80	26.41
719.79	35.4	46.0	-10.6	V		61.62	19.39	3.35	48.92	26.18

Equipment Description	Model Number	Serial Number	Last Calibration	Next Calibration
Spectrum Analyzer	R&S ESIB 40	100105	23 May 2002	23 May 2003
Receiver	R&S ESIB 40	100105	23 May 2002	23 May 2003
Spectrum Analyzer	HP 8566	E4662_E4663	7 May 2002	7 May 2003
Antenna	CBL6112B	2517	14 May 2002	14 May 2003
Antenna	Horn Antenna/3115	9205-3852	5 Sep 2000	5 Sep 2003
Amplifier	Penstock Amp	103	14 Jan 2002	14 Jan 2003
Amplifier	HP 8449B (1-26.5 GHz)	3008A00713	4 Mar 2002	4 Mar 2003
Cable	Tower 1 Cable	primary	16 Aug 2002	16 Aug 2003
Cable	Huber & Suhner SF106	0.29	26 Apr 2002	26 Apr 2003

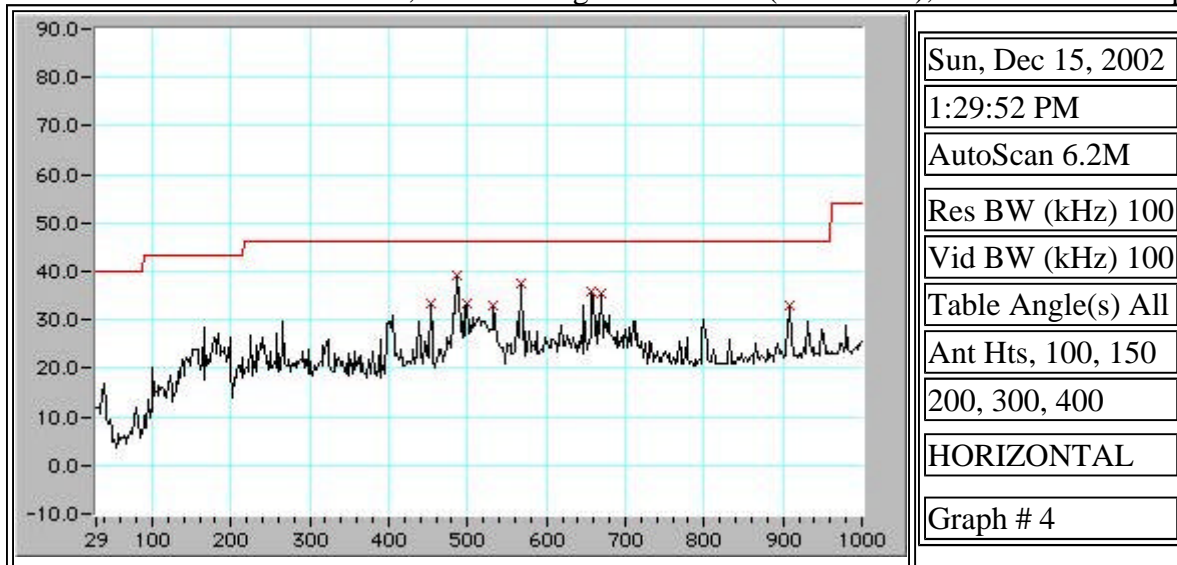
[Return to List of Scans](#) [Previous Scan](#) [Next Scan](#)

Evelyn 1

FCC Class B

P50

HORIZONTAL Patch Antenna, Transmitting at Channel 6 (2437 MHz), Data Rate = 6 Mbps



Frequency MHz	Level dBuV/m	Limit dBuV/m	Delta dB	Ht. m	Angle Deg	Raw dBuV/m	Ant. dB	Cable dB	Amp dB	All Factors dB
453.20	33.5	46.0	-12.5	H		62.93	16.80	2.58	48.84	29.46
486.28	39.1	46.0	-6.9	H		67.50	17.50	2.69	48.57	28.38
499.91	33.3	46.0	-12.7	H		61.37	17.60	2.74	48.39	28.05
532.99	32.9	46.0	-13.1	H		60.66	17.66	2.85	48.31	27.80
568.01	37.4	46.0	-8.6	H		63.76	18.94	2.93	48.21	26.33
657.52	35.9	46.0	-10.1	H		62.16	19.05	3.18	48.51	26.28
669.20	35.6	46.0	-10.4	H		61.86	19.10	3.21	48.60	26.29
908.54	33.1	46.0	-12.9	H		57.87	20.50	3.78	49.06	24.78

Equipment Description	Model Number	Serial Number	Last Calibration	Next Calibration
Spectrum Analyzer	R&S ESIB 40	100105	23 May 2002	23 May 2003
Receiver	R&S ESIB 40	100105	23 May 2002	23 May 2003
Spectrum Analyzer	HP 8566	E4662_E4663	7 May 2002	7 May 2003
Antenna	CBL6112B	2517	14 May 2002	14 May 2003
Antenna	Horn Antenna/3115	9205-3852	5 Sep 2000	5 Sep 2003
Amplifier	Penstock Amp	103	14 Jan 2002	14 Jan 2003
Amplifier	HP 8449B (1-26.5 GHz)	3008A00713	4 Mar 2002	4 Mar 2003
Cable	Tower 1 Cable	primary	16 Aug 2002	16 Aug 2003
Cable	Huber & Suhner SF106	0.29	26 Apr 2002	26 Apr 2003

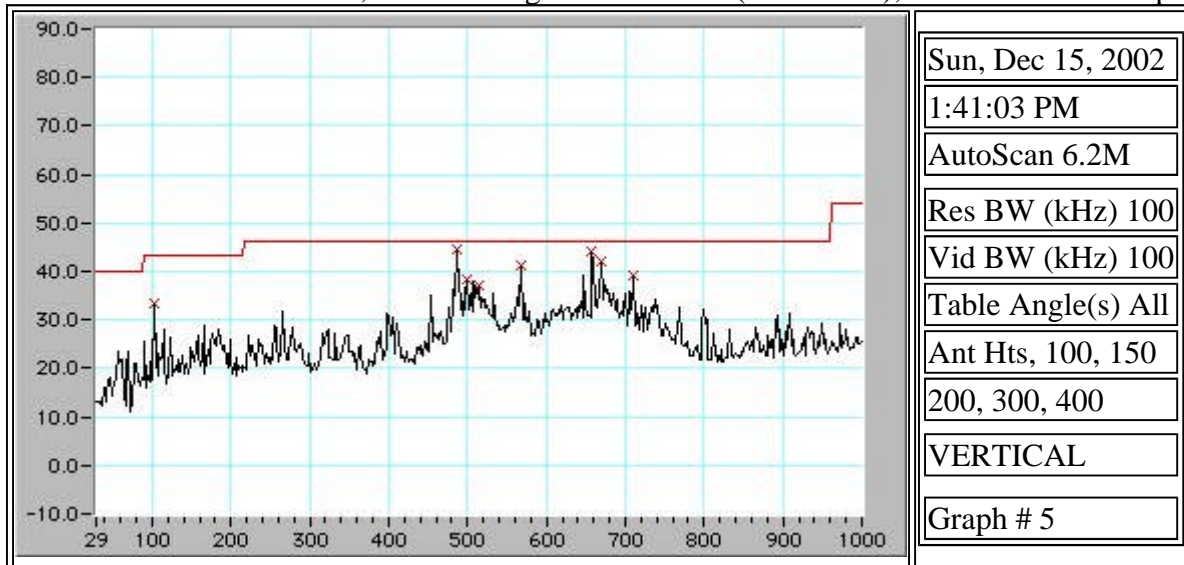
[Return to List of Scans](#) [Previous Scan](#) [Next Scan](#)

Evelyn 1

FCC Class B

P50

VERTICAL Patch Antenna, Transmitting at Channel 11 (2437 MHz), Data Rate = 54 Mbps



Frequency MHz	Level dBuV/m	Limit dBuV/m	Delta dB	Ht. m	Angle Deg	Raw dBuV/m	Ant. dB	Cable dB	Amp dB	All Factors dB
102.94	33.2	43.5	-10.3	V		71.75	10.65	1.26	50.42	38.50
486.28	44.5	46.0	-1.5	V		72.83	17.53	2.69	48.57	28.35
499.91	38.4	46.0	-7.6	V		66.47	17.60	2.74	48.39	28.05
515.47	37.3	46.0	-8.7	V		65.27	17.51	2.80	48.32	28.01
568.01	41.3	46.0	-4.7	V		67.93	18.64	2.93	48.21	26.63
657.52	44.3	46.0	-1.7	V		70.69	18.90	3.18	48.51	26.43
669.20	42.0	46.0	-4.0	V		68.51	18.90	3.21	48.60	26.49
710.06	39.4	46.0	-6.6	V		65.71	19.20	3.32	48.86	26.34

Equipment Description	Model Number	Serial Number	Last Calibration	Next Calibration
Spectrum Analyzer	R&S ESIB 40	100105	23 May 2002	23 May 2003
Receiver	R&S ESIB 40	100105	23 May 2002	23 May 2003
Spectrum Analyzer	HP 8566	E4662_E4663	7 May 2002	7 May 2003
Antenna	CBL6112B	2517	14 May 2002	14 May 2003
Antenna	Horn Antenna/3115	9205-3852	5 Sep 2000	5 Sep 2003
Amplifier	Penstock Amp	103	14 Jan 2002	14 Jan 2003
Amplifier	HP 8449B (1-26.5 GHz)	3008A00713	4 Mar 2002	4 Mar 2003
Cable	Tower 1 Cable	primary	16 Aug 2002	16 Aug 2003
Cable	Huber & Suhner SF106	0.29	26 Apr 2002	26 Apr 2003



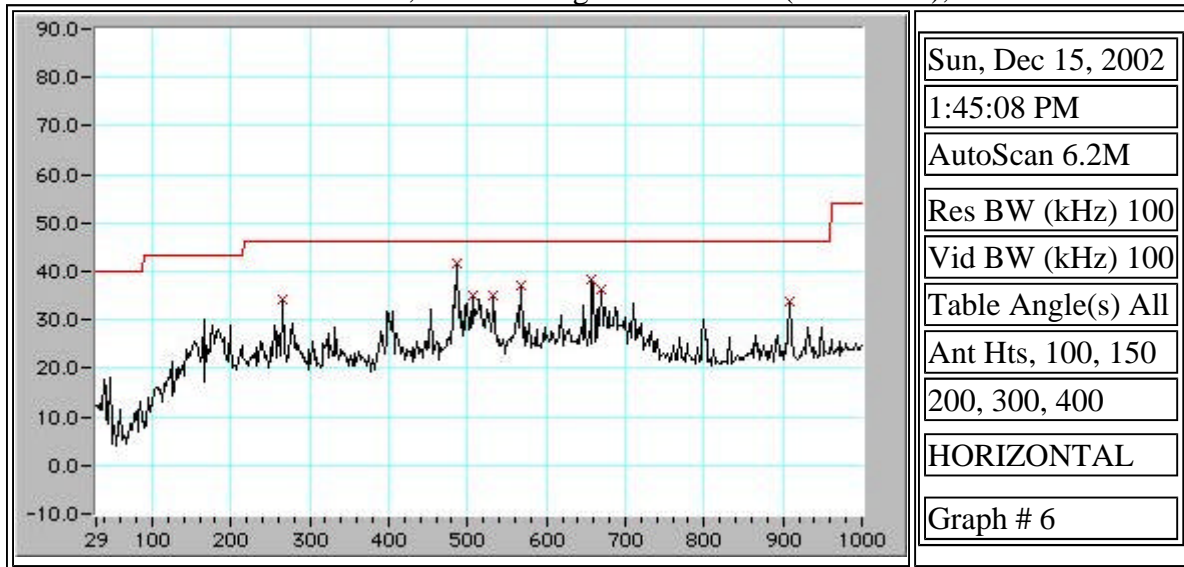
[Return to List of Scans](#) [Previous Scan](#) [Next Scan](#)

Evelyn 1

FCC Class B

P50

HORIZONTAL Patch Antenna, Transmitting at Channel 11 (2437 MHz), Data Rate = 54 Mbps



Frequency MHz	Level dBuV/m	Limit dBuV/m	Delta dB	Ht. m	Angle Deg	Raw dBuV/m	Ant. dB	Cable dB	Amp dB	All Factors dB
266.40	34.4	46.0	-11.6	H		68.52	13.78	1.97	49.90	34.15
486.28	41.7	46.0	-4.3	H		70.04	17.50	2.69	48.57	28.38
505.74	35.0	46.0	-11.0	H		63.06	17.51	2.76	48.32	28.04
532.99	35.2	46.0	-10.8	H		63.05	17.66	2.85	48.31	27.80
568.01	37.1	46.0	-8.9	H		63.43	18.94	2.93	48.21	26.33
657.52	38.3	46.0	-7.7	H		64.61	19.05	3.18	48.51	26.28
669.20	36.4	46.0	-9.6	H		62.74	19.10	3.21	48.60	26.29
908.54	33.6	46.0	-12.4	H		58.41	20.50	3.78	49.06	24.78

Equipment Description	Model Number	Serial Number	Last Calibration	Next Calibration
Spectrum Analyzer	R&S ESIB 40	100105	23 May 2002	23 May 2003
Receiver	R&S ESIB 40	100105	23 May 2002	23 May 2003
Spectrum Analyzer	HP 8566	E4662_E4663	7 May 2002	7 May 2003
Antenna	CBL6112B	2517	14 May 2002	14 May 2003
Antenna	Horn Antenna/3115	9205-3852	5 Sep 2000	5 Sep 2003
Amplifier	Penstock Amp	103	14 Jan 2002	14 Jan 2003
Amplifier	HP 8449B (1-26.5 GHz)	3008A00713	4 Mar 2002	4 Mar 2003
Cable	Tower 1 Cable	primary	16 Aug 2002	16 Aug 2003
Cable	Huber & Suhner SF106	0.29	26 Apr 2002	26 Apr 2003