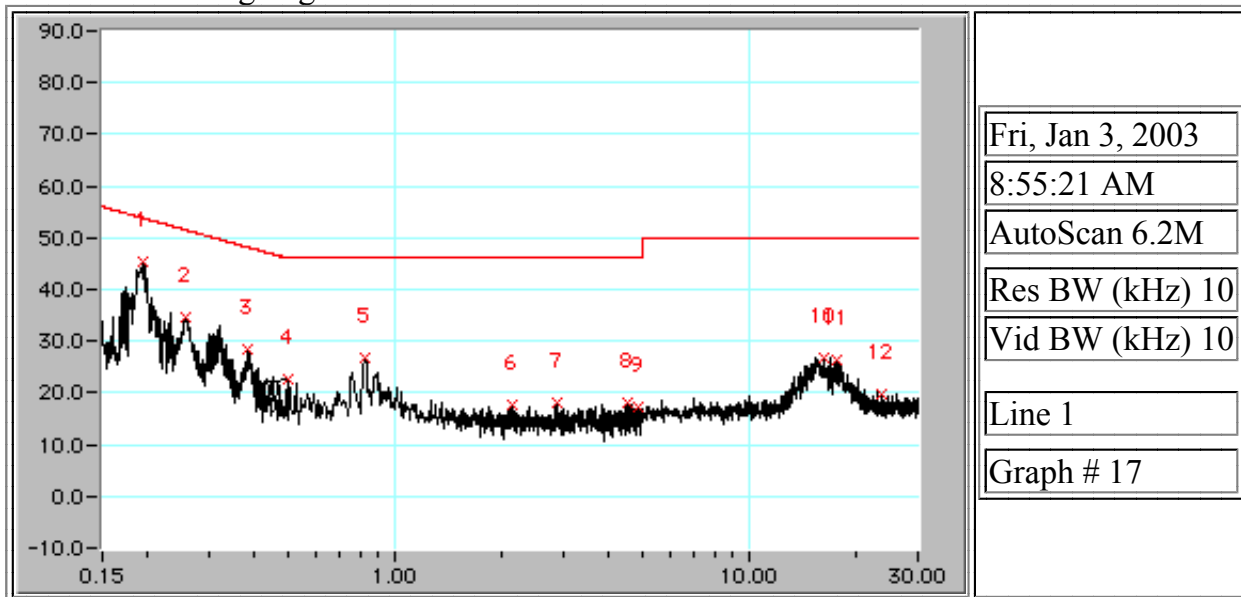


[Return to List of Scans](#) [Previous Scan](#) [Next Scan](#)

Blue Room  
 CISPR Class B  
 P50

Line 1 Transferring large file to remote server



Fri, Jan 3, 2003  
 8:55:21 AM  
 AutoScan 6.2M  
 Res BW (kHz) 10  
 Vid BW (kHz) 10  
 Line 1  
 Graph # 17

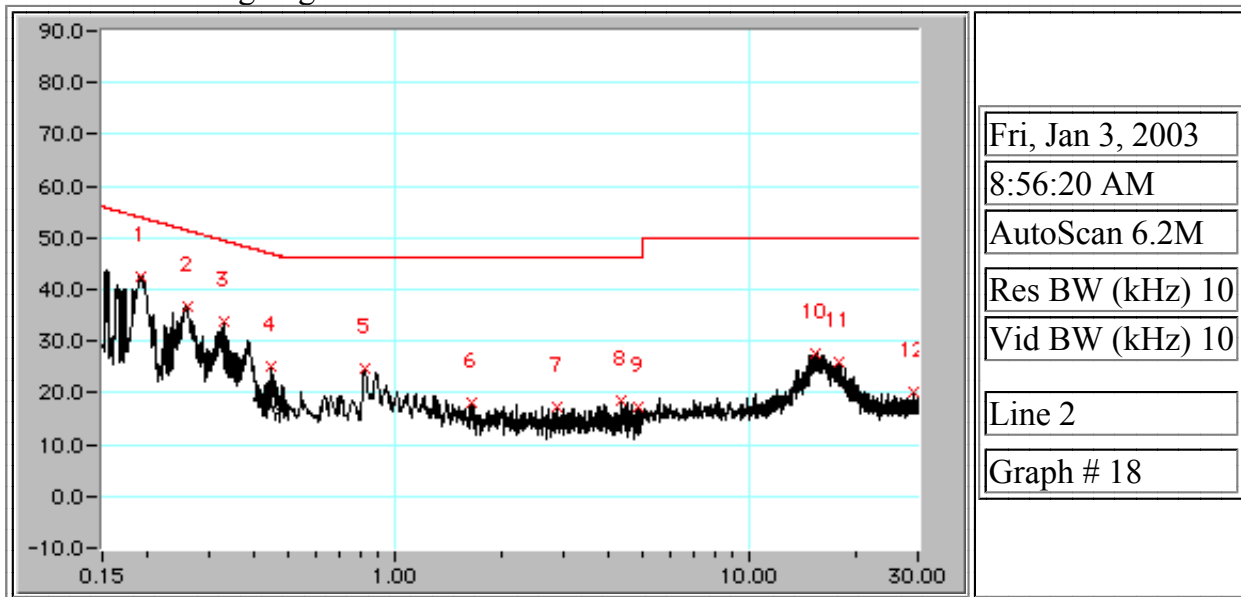
Frequency No.	Level MHz	Limit dBuV	Delta dBuV	Raw dB	LISN dB	Cable dB	Xducer dB	All Factors dB	
1	0.195	45.4	53.8	-8.4	43.38	1.96	0.06	0.00	-2.02
2	0.258	34.8	51.6	-16.8	33.22	1.51	0.07	0.00	-1.58
3	0.387	28.6	48.1	-19.5	27.60	0.93	0.07	0.00	-1.00
4	0.500	22.7	46.0	-23.3	21.92	0.71	0.07	0.00	-0.78
5	0.823	26.8	46.0	-19.2	26.23	0.48	0.10	0.00	-0.57
6	2.148	17.8	46.0	-28.2	17.32	0.34	0.14	0.00	-0.48
7	2.875	18.3	46.0	-27.7	17.83	0.30	0.17	0.00	-0.47
8	4.522	18.1	46.0	-27.9	17.59	0.31	0.20	0.00	-0.51
9	4.883	17.3	46.0	-28.7	16.79	0.31	0.21	0.00	-0.51
10	16.358	26.9	50.0	-23.1	25.89	0.60	0.41	0.00	-1.01
11	17.785	26.3	50.0	-23.7	25.23	0.64	0.43	0.00	-1.07
12	23.829	19.9	50.0	-30.1	18.53	0.87	0.50	0.00	-1.37

Equipment Description	Model Number	Serial Number	Last Calibration	Next Calibration
Spectrum Analyzer	HP 8568	AOU107886	22 Apr 2002	22 Apr 2003
Receiver	Rohde & Schwarz ESCS 30	100115	4 Apr 2002	4 Apr 2003
LISN	R&S ESHS3-Z5	153874	28 May 2002	28 May 2003
Cable	Blue Room Cable	CE#2	28 May 2002	28 May 2003

[Return to List of Scans](#) [Previous Scan](#) [Next Scan](#)

Blue Room  
 CISPR Class B  
 P50

Line 2 Transferring large file to remote server



Fri, Jan 3, 2003  
 8:56:20 AM  
 AutoScan 6.2M  
 Res BW (kHz) 10  
 Vid BW (kHz) 10  
 Line 2  
 Graph # 18

Frequency No.	Level MHz	Limit dBuV	Delta dBuV	Raw dB	LISN dB	Cable dB	Xducer dB	All Factors dB	
1	0.193	42.5	53.9	-11.4	40.50	1.94	0.06	0.00	-2.00
2	0.261	36.8	51.5	-14.7	35.27	1.46	0.07	0.00	-1.53
3	0.329	33.7	49.5	-15.8	32.52	1.11	0.07	0.00	-1.18
4	0.451	25.0	46.9	-21.9	24.15	0.78	0.07	0.00	-0.85
5	0.823	24.7	46.0	-21.3	24.15	0.46	0.10	0.00	-0.55
6	1.656	18.0	46.0	-28.0	17.54	0.34	0.13	0.00	-0.46
7	2.875	17.1	46.0	-28.9	16.62	0.31	0.17	0.00	-0.48
8	4.347	18.7	46.0	-27.3	18.21	0.29	0.20	0.00	-0.49
9	4.857	17.4	46.0	-28.6	16.89	0.30	0.21	0.00	-0.51
10	15.414	27.6	50.0	-22.4	26.73	0.48	0.39	0.00	-0.87
11	17.913	25.9	50.0	-24.1	24.93	0.55	0.43	0.00	-0.97
12	29.312	20.1	50.0	-29.9	18.61	0.94	0.56	0.00	-1.49

Equipment Description	Model Number	Serial Number	Last Calibration	Next Calibration
Spectrum Analyzer	HP 8568	AOU107886	22 Apr 2002	22 Apr 2003
Receiver	Rohde & Schwarz ESCS 30	100115	4 Apr 2002	4 Apr 2003
LISN	R&S ESHS3-Z5	153874	28 May 2002	28 May 2003
Cable	Blue Room Cable	CE#2	28 May 2002	28 May 2003