

PCS 1900 RF Interference Potential Test Report

Hardware Setup

Probe | Calibration Date EF3DV3 - SN4028 | September 04, 2023
DAE | Calibration Date DAE4 Sn1546 | March 11, 2024
Software Version 1.2.0.1713

Communication Systems

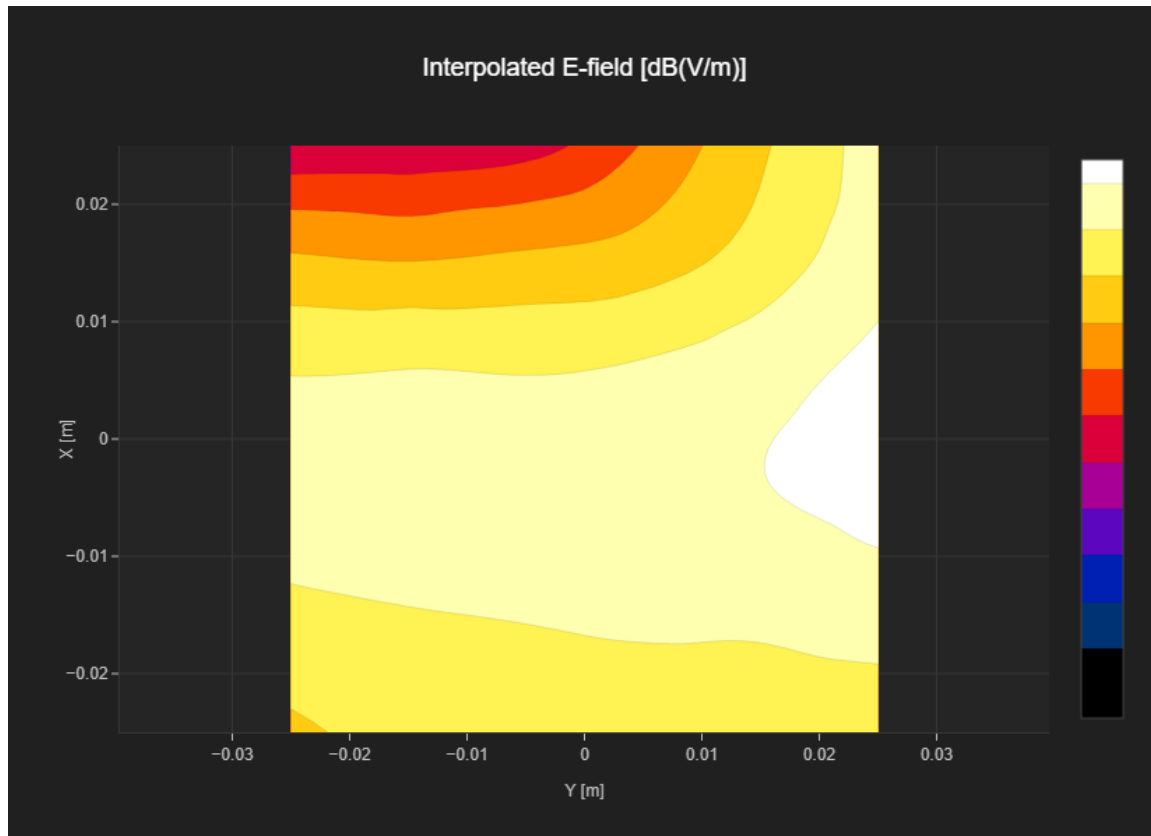
MIF 3.8
Channel | Frequency [MHz] 512 | 1850.2
Communication Systems' Name GPRS-FDD (TDMA, GMSK, TN 0)

Grid Settings

Extent X [mm]	50.0	Step X [mm]	10.0
Extent Y [mm]	50.0	Step Y [mm]	10.0
Distance [mm]	15.0		

Results

E _{max} [dBV/m]	22.61	E _{avg 50x50 Max} [dBV/m]	21.14
Drift [dB]	0.03	RFail [dBV/m]	24.94



PCS 1900 RF Interference Potential Test Report

Hardware Setup

Probe | Calibration Date EF3DV3 - SN4028 | September 04, 2023
 DAE | Calibration Date DAE4 Sn1546 | March 11, 2024
 Software Version 1.2.0.1713

Communication Systems

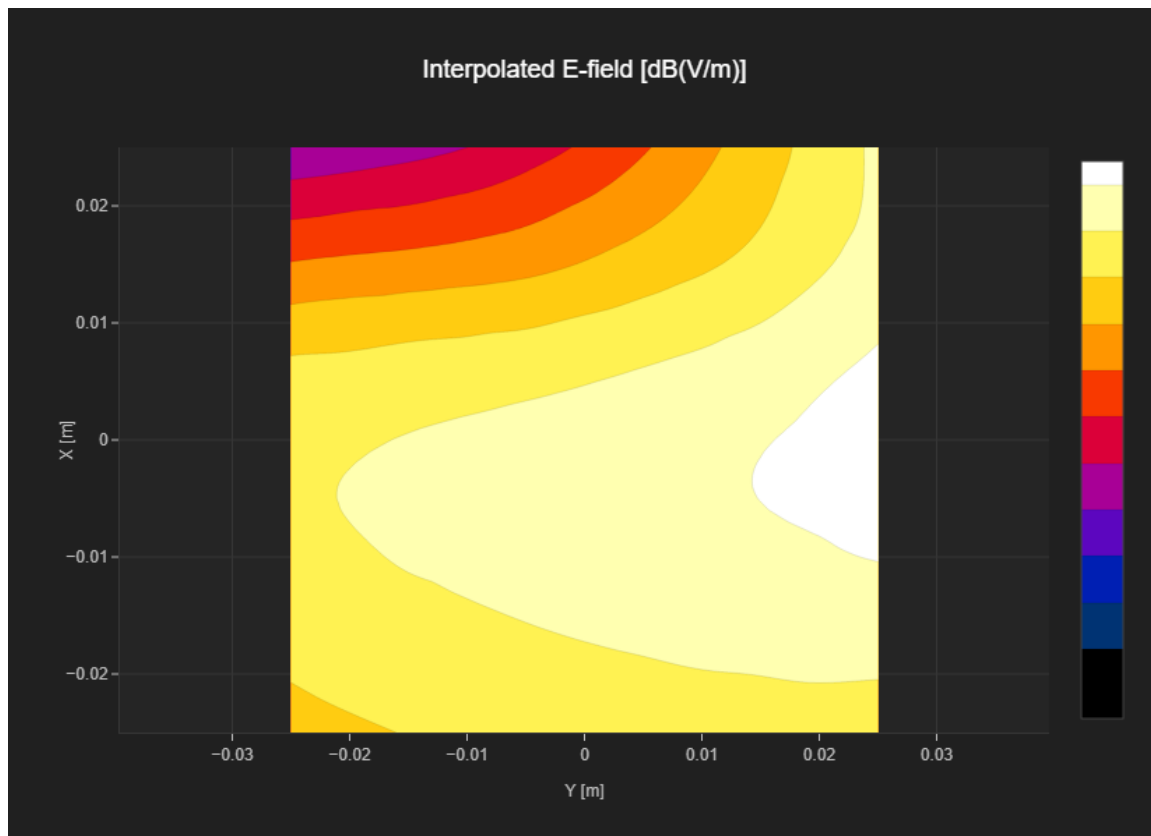
MIF 3.8
 Channel | Frequency [MHz] 661 | 1880.0
 Communication Systems' Name GPRS-FDD (TDMA, GMSK, TN 0)

Grid Settings

Extent X [mm]	50.0	Step X [mm]	10.0
Extent Y [mm]	50.0	Step Y [mm]	10.0
Distance [mm]	15.0		

Results

E _{max} [dBV/m]	24.3	E _{avg 50x50 Max} [dBV/m]	21.19
Drift [dB]	-0.08	RFail [dBV/m]	24.99



PCS 1900 RF Interference Potential Test Report

Hardware Setup

Probe | Calibration Date EF3DV3 - SN4028 | September 04, 2023
DAE | Calibration Date DAE4 Sn1546 | March 11, 2024
Software Version 1.2.0.1713

Communication Systems

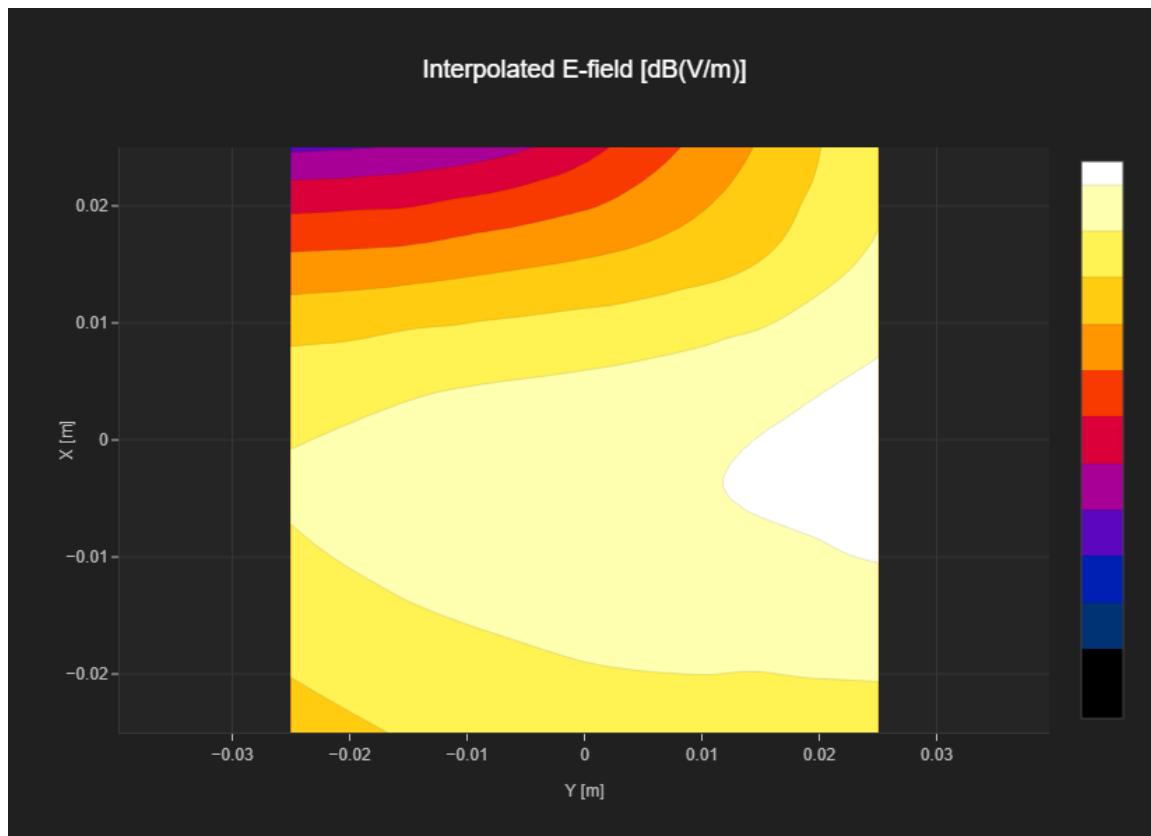
MIF 3.8
Channel | Frequency [MHz] 810 | 1909.8
Communication Systems' Name GPRS-FDD (TDMA, GMSK, TN 0)

Grid Settings

Extent X [mm]	50.0	Step X [mm]	10.0
Extent Y [mm]	50.0	Step Y [mm]	10.0
Distance [mm]	15.0		

Results

E _{max} [dBV/m]	24.68	E _{avg 50x50 Max} [dBV/m]	21.68
Drift [dB]	-0.04	RFail [dBV/m]	25.48



PCS 1900 RF Interference Potential Test Report

Hardware Setup

Probe | Calibration Date EF3DV3 - SN4028 | September 04, 2023
DAE | Calibration Date DAE4 Sn1546 | March 11, 2024
Software Version 1.2.0.1713

Communication Systems

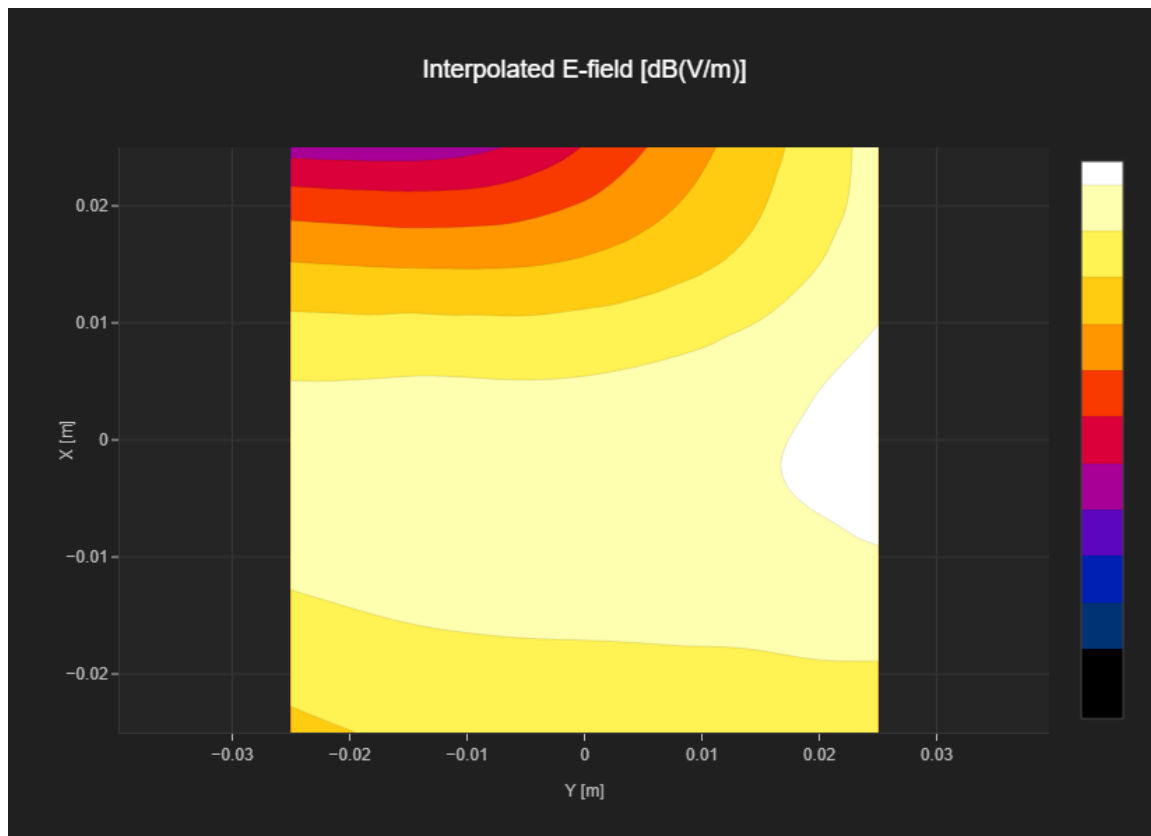
MIF 1.15
Channel | Frequency [MHz] 512 | 1850.2
Communication Systems' Name GPRS-FDD (TDMA, GMSK, TN 0-1)

Grid Settings

Extent X [mm]	50.0	Step X [mm]	10.0
Extent Y [mm]	50.0	Step Y [mm]	10.0
Distance [mm]	15.0		

Results

E _{max} [dBV/m]	24.07	E _{avg 50x50 Max} [dBV/m]	22.59
Drift [dB]	0.01	RFail [dBV/m]	23.74



PCS 1900 RF Interference Potential Test Report

Hardware Setup

Probe | Calibration Date EF3DV3 - SN4028 | September 04, 2023
DAE | Calibration Date DAE4 Sn1546 | March 11, 2024
Software Version 1.2.0.1713

Communication Systems

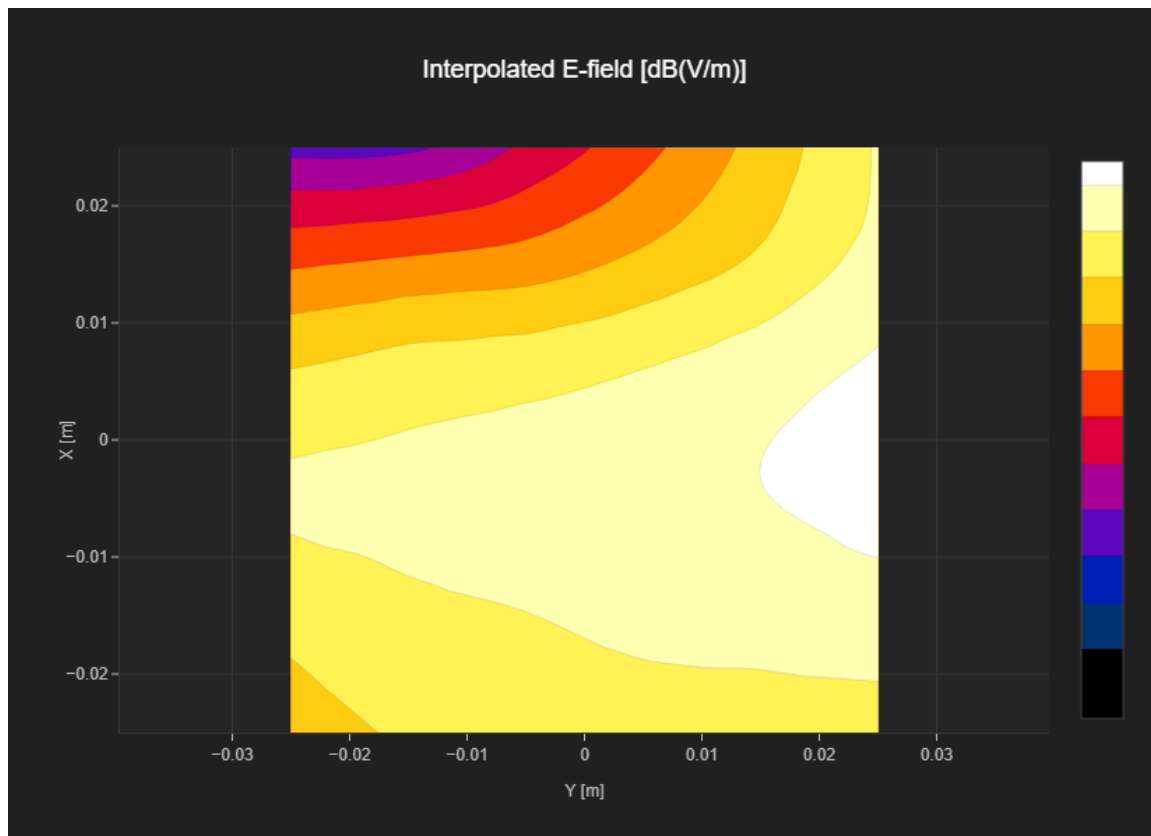
MIF 1.15
Channel | Frequency [MHz] 661 | 1880.0
Communication Systems' Name GPRS-FDD (TDMA, GMSK, TN 0-1)

Grid Settings

Extent X [mm]	50.0	Step X [mm]	10.0
Extent Y [mm]	50.0	Step Y [mm]	10.0
Distance [mm]	15.0		

Results

E _{max} [dBV/m]	25.99	E _{avg 50x50 Max} [dBV/m]	22.82
Drift [dB]	-0.13	RFail [dBV/m]	23.97



PCS 1900 RF Interference Potential Test Report

Hardware Setup

Probe | Calibration Date EF3DV3 - SN4028 | September 04, 2023
DAE | Calibration Date DAE4 Sn1546 | March 11, 2024
Software Version 1.2.0.1713

Communication Systems

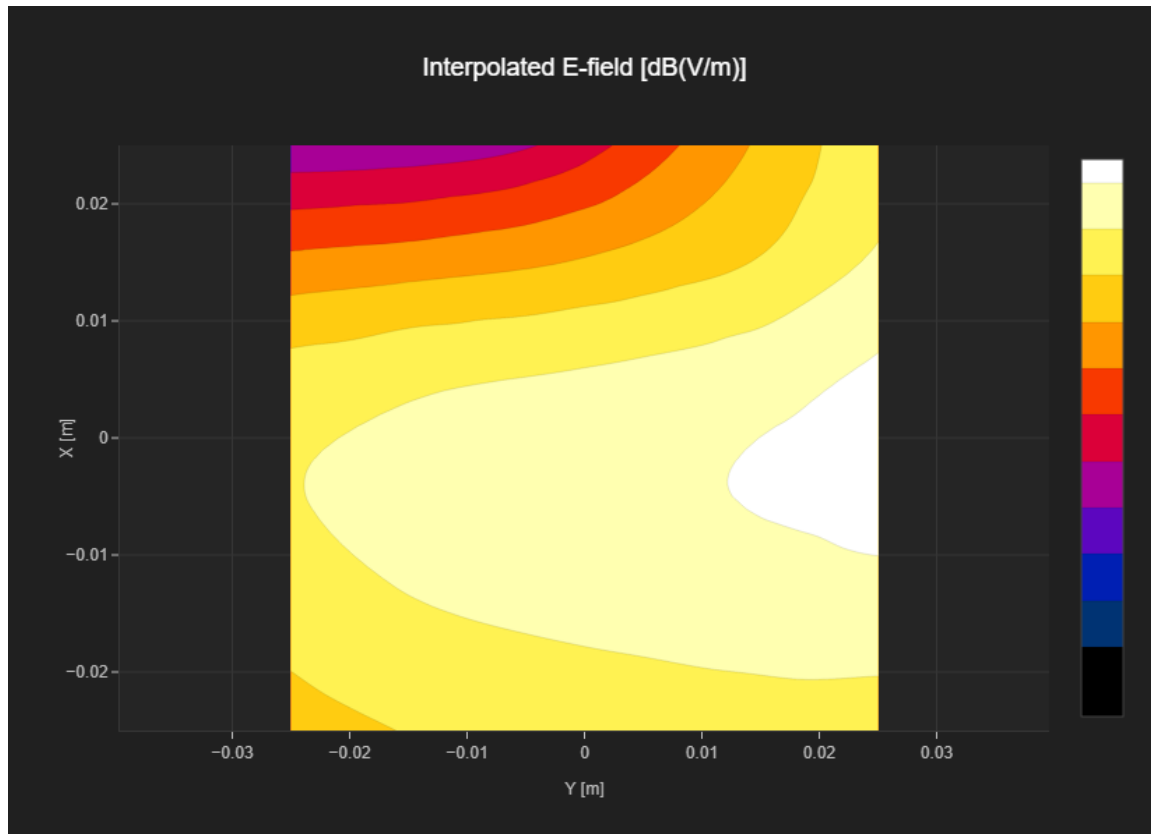
MIF 1.15
Channel | Frequency [MHz] 810 | 1909.8
Communication Systems' Name GPRS-FDD (TDMA, GMSK, TN 0-1)

Grid Settings

Extent X [mm]	50.0	Step X [mm]	10.0
Extent Y [mm]	50.0	Step Y [mm]	10.0
Distance [mm]	15.0		

Results

E _{max} [dBV/m]	26.54	E _{avg 50x50 Max} [dBV/m]	23.51
Drift [dB]	0.04	RFail [dBV/m]	24.66



PCS 1900 RF Interference Potential Test Report

Hardware Setup

Probe | Calibration Date EF3DV3 - SN4028 | September 04, 2023
 DAE | Calibration Date DAE4 Sn1546 | March 11, 2024
 Software Version 1.2.0.1713

Communication Systems

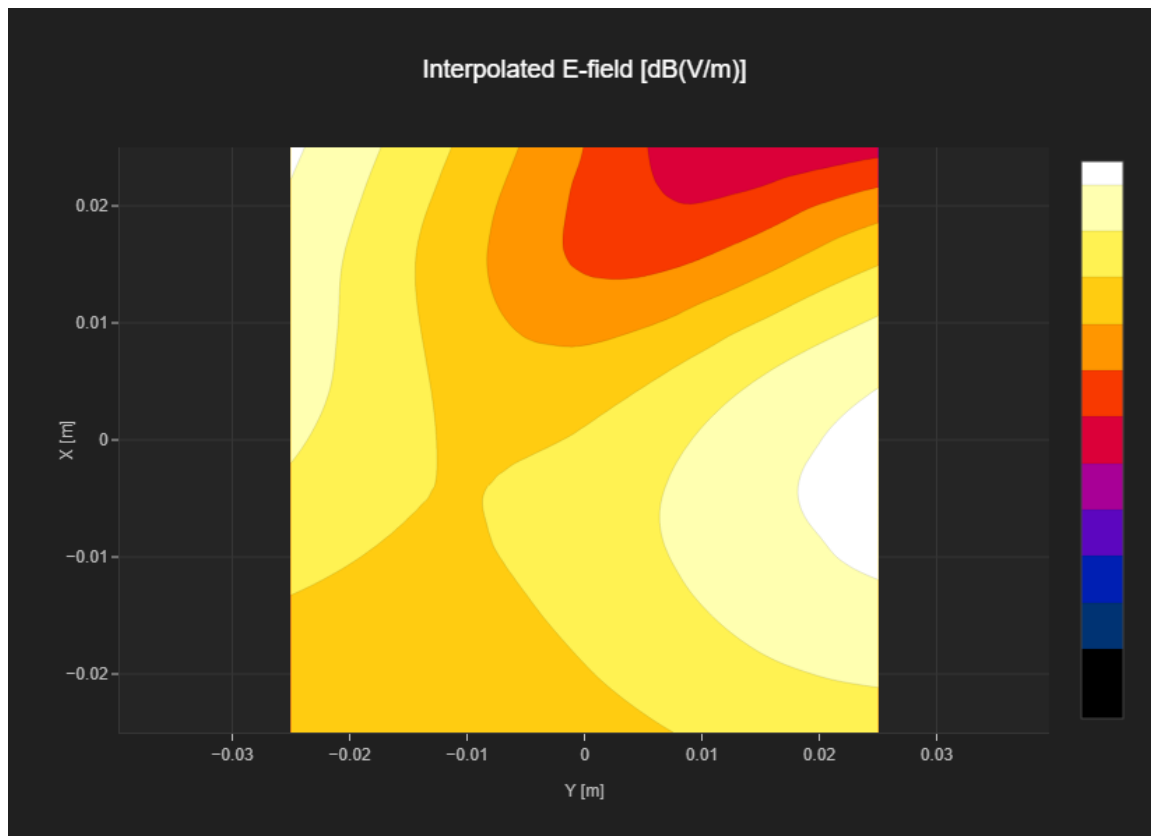
MIF 3.8
 Channel | Frequency [MHz] 512 | 1850.2
 Communication Systems' Name GPRS-FDD (TDMA, GMSK, TN 0)

Grid Settings

Extent X [mm]	50.0	Step X [mm]	10.0
Extent Y [mm]	50.0	Step Y [mm]	10.0
Distance [mm]	15.0		

Results

E _{max} [dBV/m]	25.02	E _{avg 50x50 Max} [dBV/m]	21.06
Drift [dB]	0.06	RFail [dBV/m]	24.86



PCS 1900 RF Interference Potential Test Report

Hardware Setup

Probe | Calibration Date EF3DV3 - SN4028 | September 04, 2023
DAE | Calibration Date DAE4 Sn1546 | March 11, 2024
Software Version 1.2.0.1713

Communication Systems

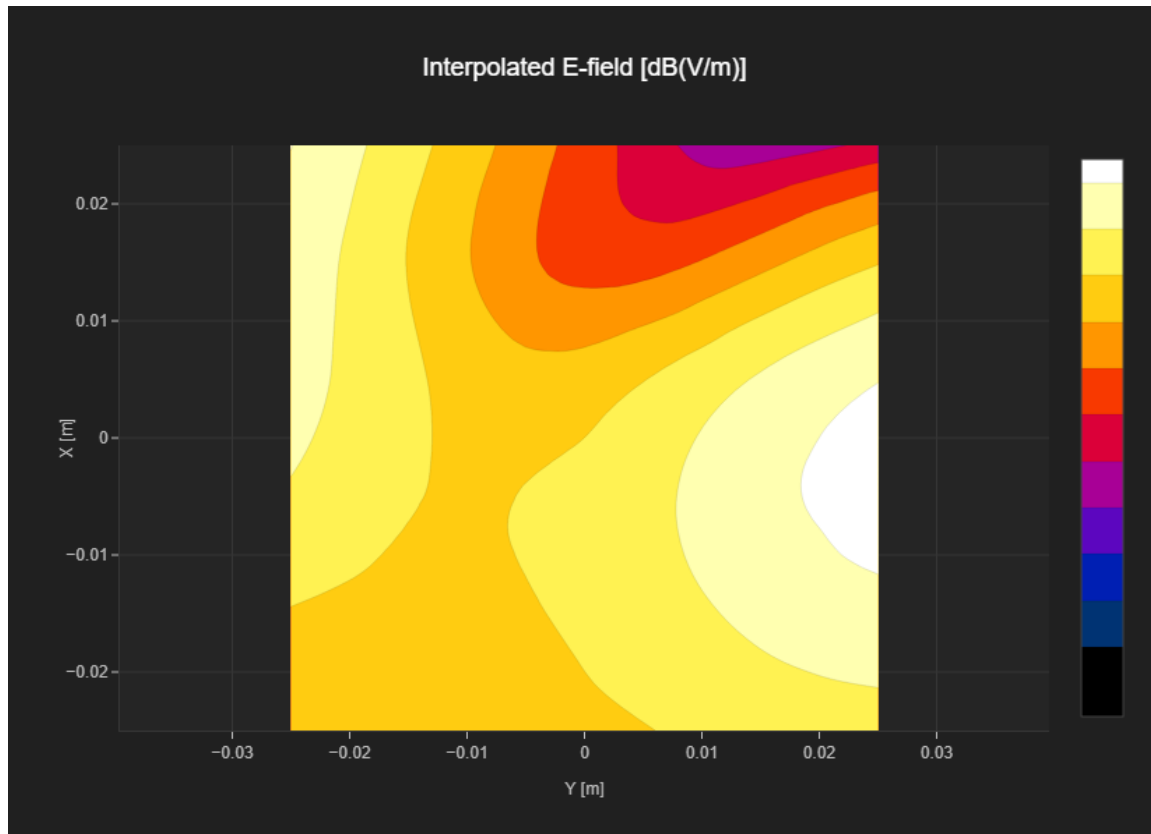
MIF 3.8
Channel | Frequency [MHz] 661 | 1880.0
Communication Systems' Name GPRS-FDD (TDMA, GMSK, TN 0)

Grid Settings

Extent X [mm]	50.0	Step X [mm]	10.0
Extent Y [mm]	50.0	Step Y [mm]	10.0
Distance [mm]	15.0		

Results

E _{max} [dBV/m]	25.6	E _{avg 50x50 Max} [dBV/m]	21.57
Drift [dB]	0.07	RFail [dBV/m]	25.37



PCS 1900 RF Interference Potential Test Report

Hardware Setup

Probe | Calibration Date EF3DV3 - SN4028 | September 04, 2023
DAE | Calibration Date DAE4 Sn1546 | March 11, 2024
Software Version 1.2.0.1713

Communication Systems

MIF 3.8
Channel | Frequency [MHz] 810 | 1909.8
Communication Systems' Name GPRS-FDD (TDMA, GMSK, TN 0)

Grid Settings

Extent X [mm]	50.0	Step X [mm]	10.0
Extent Y [mm]	50.0	Step Y [mm]	10.0
Distance [mm]	15.0		

Results

E _{max} [dBV/m]	25.47	E _{avg 50x50 Max} [dBV/m]	21.25
Drift [dB]	0.08	RFail [dBV/m]	25.05

