

**Band n53: 5G NR (DFT-s-OFDM, 50% RB, 10 MHz, QPSK, 30 kHz) RBPosition:Mid
AntennaCfg:SISO, BACK**

Exposure Conditions

Band	Band n53	TSL Permittivity	40.5
Frequency [MHz] Channel Number	2489.300 497860	TSL Conductivity [S/m]	1.83
Group UID	5G NR FR1 TDD 10908-AAC	Phantom Section TSL	Flat HSL
Conversion Factor	7.66	Test Distance [mm]	5.00

Hardware Setup

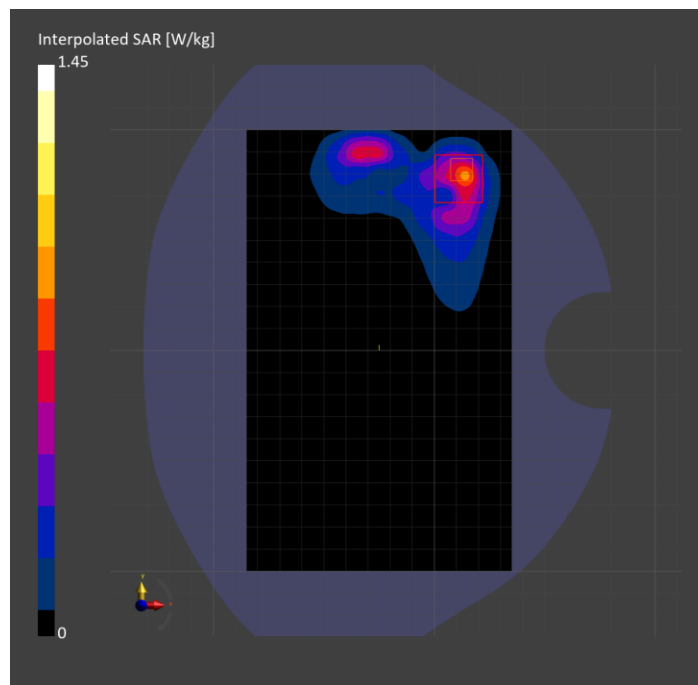
Probe Calibration Date	EX3DV4 - SN7709 2023-11-30	Phantom	Twin-SAM V8.0 (30deg probe tilt)
DAE Calibration Date	DAE4 Sn1714 2023-11-22	TSL Type	HBBL-600-10000
Software Version	16.2.4.2524		

Scan Setup

	Area Scan	Zoom Scan
Grid Extents [mm]	120.0 x 200.0	30.0 x 30.0 x 30.0
Grid Steps [mm]	10.0 x 10.0	5.0 x 5.0 x 1.5
Sensor Surface [mm]	3.0	1.4
Graded Grid	N/A	Yes
M2/M1 [%]		79.0
Dist 3dB Peak [mm]		5.7
Peak SAR [W/kg] SAR Peak Location [mm]	N/A	1.45 [12.0, 81.5, -207.0]

Measurement Results

	Area Scan	Zoom Scan
psSAR1g [W/Kg]	0.626	0.617
psSAR10g [W/Kg]	0.276	0.257
Power Drift [dB]	N/A	-0.05



Custom Band: CW, FRONT

Exposure Conditions

Band	Custom Band	TSL Permittivity	42.8
Frequency [MHz] Channel Number	1617.600 1617600	TSL Conductivity [S/m]	1.24
Group UID	CW 0--	Phantom Section TSL	Flat HSL
Conversion Factor	8.51	Test Distance [mm]	0.00

Hardware Setup

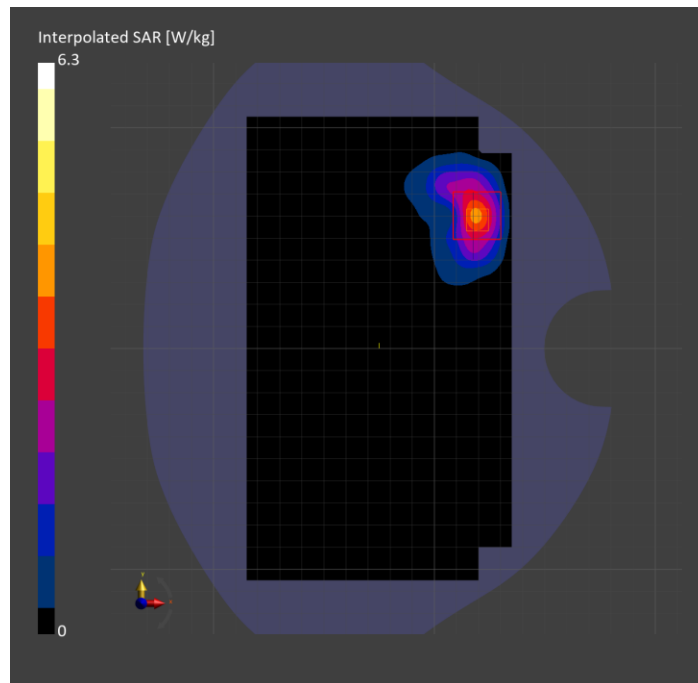
Probe Calibration Date	EX3DV4 - SN3989 2024-01-09	Phantom	Twin-SAM V8.0 (30deg probe tilt)
DAE Calibration Date	DAE4 Sn1433 2024-02-08	TSL Type	HBBL-600-10000
Software Version	16.2.4.2524		

Scan Setup

	Area Scan	Zoom Scan
Grid Extents [mm]	120.0 x 210.0	30.0 x 30.0 x 30.0
Grid Steps [mm]	15.0 x 15.0	3.8 x 3.8 x 1.4
Sensor Surface [mm]	3.0	1.4
Graded Grid	N/A	Yes
M2/M1 [%]		79.0
Dist 3dB Peak [mm]		5.4
Peak SAR [W/kg] SAR Peak Location [mm]	N/A	6.30 [17.5, 66.3, -207.0]

Measurement Results

	Area Scan	Zoom Scan
psSAR1g [W/Kg]	2.92	2.71
psSAR10g [W/Kg]	1.49	1.23
Power Drift [dB]	-0.00	-0.00



Band 41: LTE-TDD (SC-FDMA, 50% RB, 20 MHz, QPSK, UL Subframe=2,3,4,7,8,9) RBPosition:High AntennaCfg:SISO, EDGE RIGHT

Exposure Conditions

Band	Band 41	TSL Permittivity	37.7
Frequency [MHz] Channel Number	2593.000 40620	TSL Conductivity [S/m]	1.92
Group UID	LTE-TDD 10494-AAG	Phantom Section TSL	Flat HSL
Conversion Factor	7.63	Test Distance [mm]	5.00

Hardware Setup

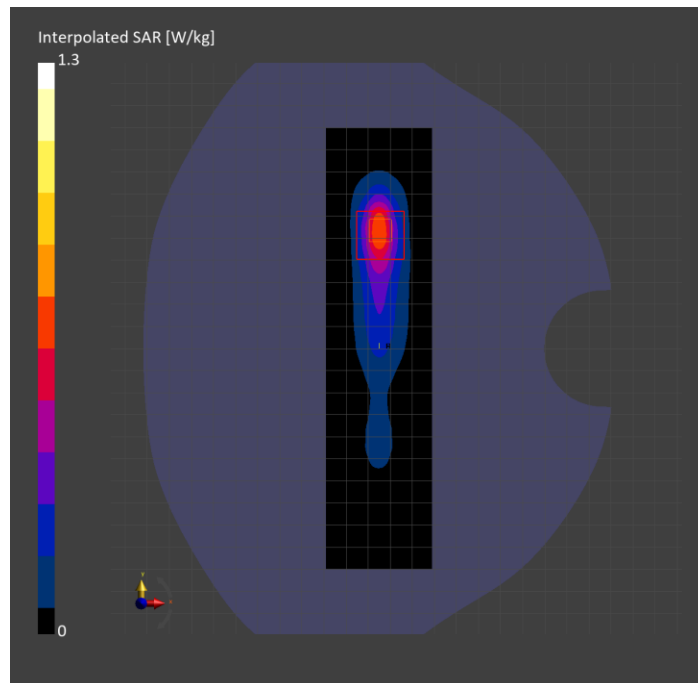
Probe Calibration Date	EX3DV4 - SN3991 2023-10-12	Phantom	Twin-SAM V5.0 (30deg probe tilt)
DAE Calibration Date	DAE4 Sn1380 2024-02-09	TSL Type	HBBL-600-10000
Software Version	16.2.4.2524		

Scan Setup

	Area Scan	Zoom Scan
Grid Extents [mm]	48.0 x 200.0	30.0 x 30.0 x 30.0
Grid Steps [mm]	8.0 x 10.0	5.0 x 5.0 x 1.5
Sensor Surface [mm]	3.0	1.4
Graded Grid	N/A	Yes
M2/M1 [%]		79.5
Dist 3dB Peak [mm]		7.0
Peak SAR [W/kg] SAR Peak Location [mm]	N/A	1.30 [-24.0, 54.5, -207.0]

Measurement Results

	Area Scan	Zoom Scan
psSAR1g [W/Kg]	0.551	0.569
psSAR10g [W/Kg]	0.232	0.235
Power Drift [dB]	N/A	-0.01



Band 48: LTE-TDD (SC-FDMA, 1 RB, 20 MHz, QPSK, UL Subframe=2,3,4,7,8,9) RBPosition:Low AntennaCfg:SISO, CHEEK

Exposure Conditions

Band	Band 48	TSL Permittivity	36.2
Frequency [MHz] Channel Number	3560.000 55340	TSL Conductivity [S/m]	2.99
Group UID	LTE-TDD 10435-AAG	Phantom Section TSL	LeftHead HSL
Conversion Factor	6.91	Test Distance [mm]	0.00

Hardware Setup

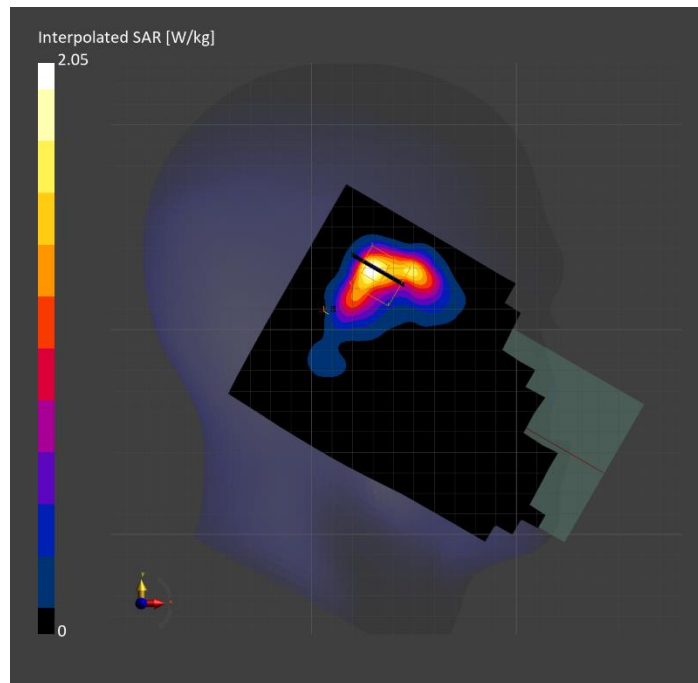
Probe Calibration Date	EX3DV4 - SN7356 2024-03-14	Phantom	Twin-SAM V5.0 (30deg probe tilt)
DAE Calibration Date	DAE4 Sn1259 2023-09-06	TSL Type	HBBL-600-10000
Software Version	16.2.4.2524		

Scan Setup

	Area Scan	Zoom Scan
Grid Extents [mm]	120.0 x 200.0	28.0 x 28.0 x 28.0
Grid Steps [mm]	10.0 x 10.0	5.0 x 5.0 x 1.4
Sensor Surface [mm]	3.0	1.4
Graded Grid	N/A	Yes
M2/M1 [%]		75.6
Dist 3dB Peak [mm]		7.3
Peak SAR [W/kg] SAR Peak Location [mm]	N/A	2.05 [30.5, 331.8, -174.7]

Measurement Results

	Area Scan	Zoom Scan
psSAR1g [W/Kg]	0.819	0.825
psSAR10g [W/Kg]	0.338	0.328
Power Drift [dB]	N/A	-0.05



WLAN 2.4GHz: IEEE 802.11b WiFi 2.4 GHz (DSSS, 1 Mbps, 99pc duty cycle), CHEEK

Exposure Conditions

Band	WLAN 2.4GHz	TSL Permittivity	39.5
Frequency [MHz] Channel Number	2462.000 11	TSL Conductivity [S/m]	1.74
Group UID	WLAN 10415-AAA	Phantom Section TSL	LeftHead HSL
Conversion Factor	7.18	Test Distance [mm]	0.00

Hardware Setup

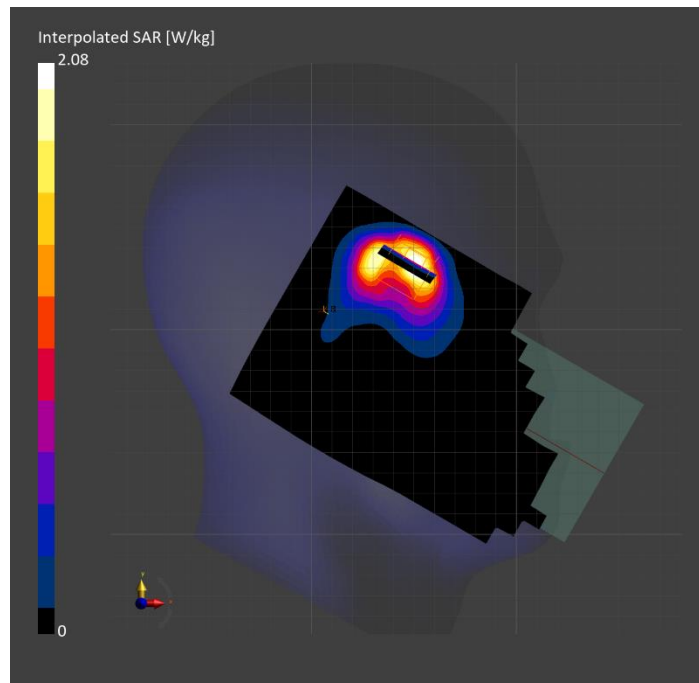
Probe Calibration Date	EX3DV4 - SN3772 2024-02-07	Phantom	Twin-SAM V8.0 (30deg probe tilt)
DAE Calibration Date	DAE4 Sn1258 2024-03-12	TSL Type	HBBL-600-10000
Software Version	16.2.4.2524		

Scan Setup

	Area Scan	Zoom Scan
Grid Extents [mm]	120.0 x 200.0	30.0 x 30.0 x 30.0
Grid Steps [mm]	10.0 x 10.0	5.0 x 5.0 x 1.5
Sensor Surface [mm]	3.0	1.4
Graded Grid	N/A	Yes
M2/M1 [%]		75.4
Dist 3dB Peak [mm]		4.5
Peak SAR [W/kg] SAR Peak Location [mm]	N/A	2.08 [48.6, 334.6, -173.4]

Measurement Results

	Area Scan	Zoom Scan
psSAR1g [W/Kg]	0.730	0.842
psSAR10g [W/Kg]	0.355	0.366
Power Drift [dB]	-0.01	-0.01



WLAN 5GHz: IEEE 802.11ac WiFi (80MHz, MCS0, 99pc duty cycle), BACK

Exposure Conditions

Band	WLAN 5GHz	TSL Permittivity	35.0
Frequency [MHz] Channel Number	5775.000 155	TSL Conductivity [S/m]	5.12
Group UID	WLAN 10544-AAD	Phantom Section TSL	Flat HSL
Conversion Factor	5.2	Test Distance [mm]	5.00

Hardware Setup

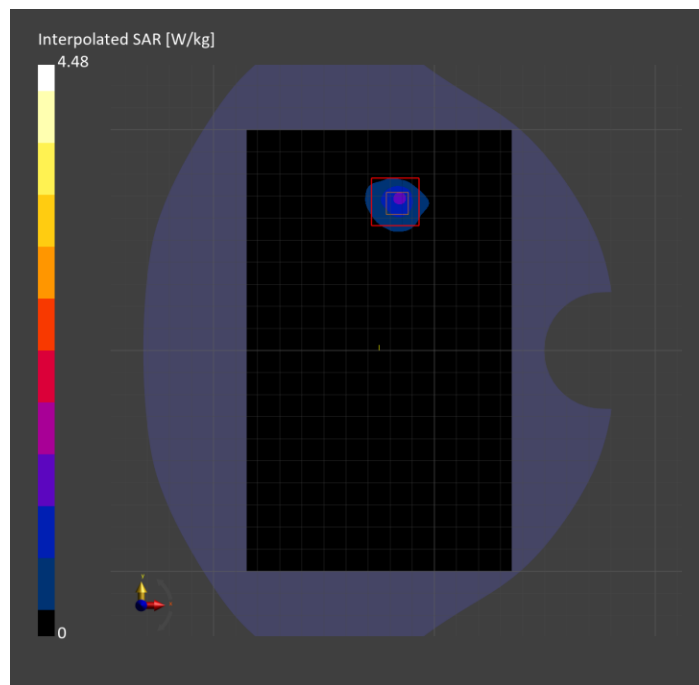
Probe Calibration Date	EX3DV4 - SN3902 2024-03-12	Phantom	Twin-SAM V5.0 (30deg probe tilt)
DAE Calibration Date	DAE4 Sn1799 2023-04-04	TSL Type	HBBL-600-10000
Software Version	16.2.4.2524		

Scan Setup

	Area Scan	Zoom Scan
Grid Extents [mm]	120.0 x 200.0	22.0 x 22.0 x 22.0
Grid Steps [mm]	10.0 x 10.0	4.0 x 4.0 x 1.4
Sensor Surface [mm]	3.0	1.4
Graded Grid	N/A	Yes
M2/M1 [%]		60.8
Dist 3dB Peak [mm]		4.9
Peak SAR [W/kg] SAR Peak Location [mm]	N/A	4.48 [-14.6, 66.9, -207.0]

Measurement Results

	Area Scan	Zoom Scan
psSAR1g [W/Kg]	0.818	1.00
psSAR10g [W/Kg]	0.256	0.280
Power Drift [dB]	-0.39	0.13



Custom Band: CW, EDGE RIGHT

Exposure Conditions

Band	Custom Band	TSL Permittivity	38.5
Frequency [MHz] Channel Number	2441.000 2441000	TSL Conductivity [S/m]	1.74
Group UID	CW 0--	Phantom Section TSL	Flat HSL
Conversion Factor	6.96	Test Distance [mm]	5.00

Hardware Setup

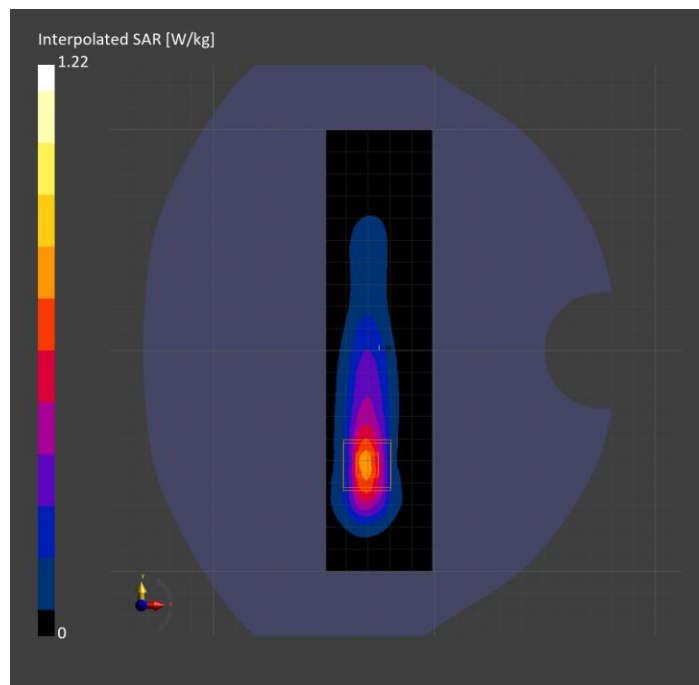
Probe Calibration Date	EX3DV4 - SN7779 2024-05-10	Phantom	Twin-SAM V8.0 (30deg probe tilt)
DAE Calibration Date	DAE4 Sn1439 2024-04-24	TSL Type	HBBL-600-10000
Software Version	16.2.4.2524		

Scan Setup

	Area Scan	Zoom Scan
Grid Extents [mm]	48.0 x 200.0	30.0 x 30.0 x 30.0
Grid Steps [mm]	8.0 x 10.0	5.0 x 5.0 x 1.5
Sensor Surface [mm]	3.0	1.4
Graded Grid	N/A	Yes
M2/M1 [%]		82.0
Dist 3dB Peak [mm]		7.0
Peak SAR [W/kg] SAR Peak Location [mm]	N/A	1.22 [-30.4, -51.0, -207.0]

Measurement Results

	Area Scan	Zoom Scan
psSAR1g [W/Kg]	0.579	0.597
psSAR10g [W/Kg]	0.258	0.259
Power Drift [dB]	N/A	0.00



Custom Band: CW, EDGE TOP

Exposure Conditions

Band	Custom Band	TSL Permittivity	52.8
Frequency [MHz] Channel Number	13.600 13600	TSL Conductivity [S/m]	0.702
Group UID	CW 0--	Phantom Section TSL	Flat HSL
Conversion Factor	17.98	Test Distance [mm]	0.00

Hardware Setup

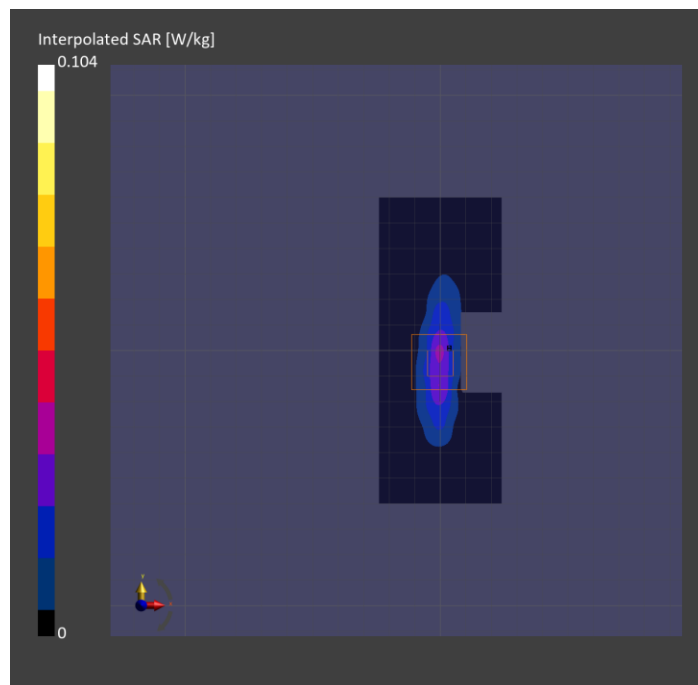
Probe Calibration Date	EX3DV4 - SN3991 2023-10-12	Phantom	ELI V5.0 (20deg probe tilt)
DAE Calibration Date	DAE4 Sn1380 2024-02-09	TSL Type	HBBL-600-10000
Software Version	16.2.4.2524		

Scan Setup

	Area Scan	Zoom Scan
Grid Extents [mm]	48.0 x 120.0	30.0 x 30.0 x 30.0
Grid Steps [mm]	8.0 x 15.0	4.2 x 4.2 x 1.4
Sensor Surface [mm]	3.0	1.4
Graded Grid	N/A	Yes
M2/M1 [%]		60.7
Dist 3dB Peak [mm]		5.1
Peak SAR [W/kg] SAR Peak Location [mm]	N/A	0.110 [-1.4, -3.2, -180.4]

Measurement Results

	Area Scan	Zoom Scan
psSAR1g [W/Kg]	0.030	0.028
psSAR10g [W/Kg]	0.017	0.010
Power Drift [dB]	N/A	-0.05



U-NII-8: IEEE 802.11ax (160MHz, MCS0, 99pc duty cycle), BACK

Exposure Conditions

Band	U-NII-8	TSL Permittivity	32.8
Frequency [MHz] Channel Number	6985.000 207	TSL Conductivity [S/m]	6.58
Group UID	WLAN 10755-AAC	Phantom Section TSL	Flat HSL
Conversion Factor	5.24	Test Distance [mm]	5.00

Hardware Setup

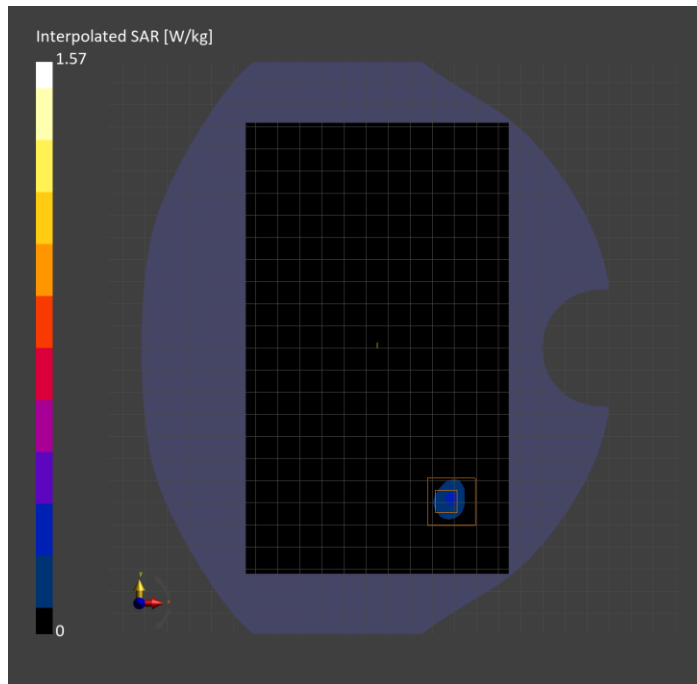
Probe Calibration Date	EX3DV4 - SN7498 2024-03-12	Phantom	Twin-SAM V8.0 (30deg probe tilt)
DAE Calibration Date	DAE4 Sn1796 2024-05-02	TSL Type	HBBL-600-10000
Software Version	16.2.4.2524		

Scan Setup

	Area Scan	Zoom Scan
Grid Extents [mm]	119.0 x 204.0	22.0 x 22.0 x 22.0
Grid Steps [mm]	8.5 x 8.5	3.4 x 3.4 x 1.4
Sensor Surface [mm]	3.0	1.4
Graded Grid	N/A	Yes
M2/M1 [%]		48.8
Dist 3dB Peak [mm]		5.5
Peak SAR [W/kg] SAR Peak Location [mm]	N/A	1.57 [6.8, -69.9, -207.0]

Measurement Results

	Area Scan	Zoom Scan	APD
psSAR1g [W/Kg]	0.216	0.268	N/A
psSAR8g [W/Kg]	0.067	0.080	N/A
psSAR10g [W/Kg]	0.058	0.068	N/A
psAPD (4.0cm ² , sq.) [W/m ²]	N/A	N/A	1.59
Power Drift [dB]	0.05	0.08	0.08



**Band n53: 5G NR (DFT-s-OFDM, 50% RB, 10 MHz, QPSK, 30 kHz) RBPosition:Mid
AntennaCfg:SISO, BACK**

Exposure Conditions

Band	Band n53	TSL Permittivity	40.5
Frequency [MHz] Channel Number	2489.300 497860	TSL Conductivity [S/m]	1.83
Group UID	5G NR FR1 TDD 10908-AAC	Phantom Section TSL	Flat HSL
Conversion Factor	7.66	Test Distance [mm]	5.00

Hardware Setup

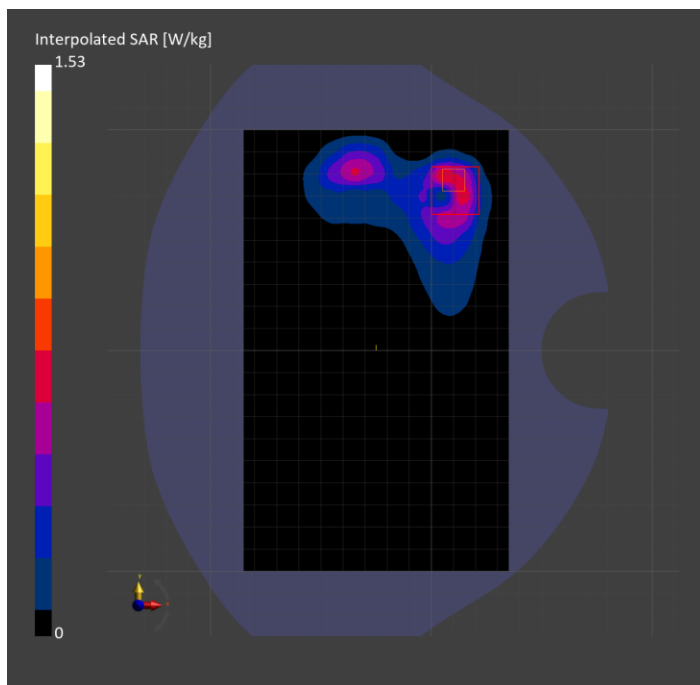
Probe Calibration Date	EX3DV4 - SN7709 2023-11-30	Phantom	Twin-SAM V8.0 (30deg probe tilt)
DAE Calibration Date	DAE4 Sn1714 2023-11-22	TSL Type	HBBL-600-10000
Software Version	16.2.4.2524		

Scan Setup

	Area Scan	Zoom Scan
Grid Extents [mm]	120.0 x 200.0	30.0 x 30.0 x 30.0
Grid Steps [mm]	10.0 x 10.0	4.9 x 4.9 x 1.5
Sensor Surface [mm]	3.0	1.4
Graded Grid	N/A	Yes
M2/M1 [%]		78.5
Dist 3dB Peak [mm]		5.6
Peak SAR [W/kg] SAR Peak Location [mm]	N/A	1.53 [10.3, 76.2, -207.0]

Measurement Results

	Area Scan	Zoom Scan
psSAR1g [W/Kg]	0.532	0.649
psSAR10g [W/Kg]	0.261	0.268
Power Drift [dB]	N/A	-0.03



Custom Band: CW, FRONT

Exposure Conditions

Band	Custom Band	TSL Permittivity	42.8
Frequency [MHz] Channel Number	1617.600 1617600	TSL Conductivity [S/m]	1.24
Group UID	CW 0--	Phantom Section TSL	Flat HSL
Conversion Factor	8.51	Test Distance [mm]	0.00

Hardware Setup

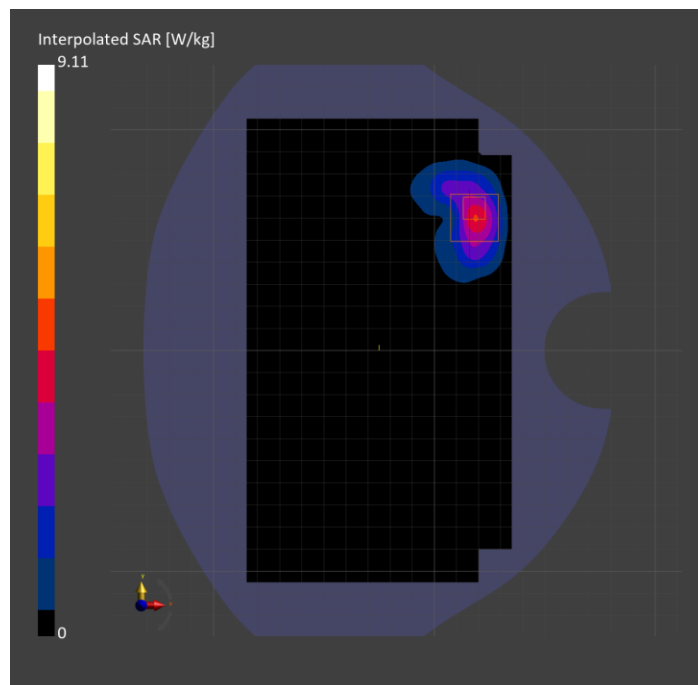
Probe Calibration Date	EX3DV4 - SN3989 2024-01-09	Phantom	Twin-SAM V8.0 (30deg probe tilt)
DAE Calibration Date	DAE4 Sn1433 2024-02-08	TSL Type	HBBL-600-10000
Software Version	16.2.4.2524		

Scan Setup

	Area Scan	Zoom Scan
Grid Extents [mm]	120.0 x 210.0	30.0 x 30.0 x 30.0
Grid Steps [mm]	15.0 x 15.0	4.6 x 4.6 x 1.4
Sensor Surface [mm]	3.0	1.4
Graded Grid	N/A	Yes
M2/M1 [%]		77.1
Dist 3dB Peak [mm]		3.8
Peak SAR [W/kg] SAR Peak Location [mm]	N/A	9.11 [16.0, 63.5, -207.0]

Measurement Results

	Area Scan	Zoom Scan
psSAR1g [W/Kg]	3.43	3.52
psSAR10g [W/Kg]	1.74	1.58
Power Drift [dB]	-0.01	0.03



Band 41: LTE-TDD (SC-FDMA, 50% RB, 20 MHz, QPSK, UL Subframe=2,3,4,7,8,9) RBPosition:High AntennaCfg:SISO, EDGE RIGHT

Exposure Conditions

Band	Band 41	TSL Permittivity	37.7
Frequency [MHz] Channel Number	2593.000 40620	TSL Conductivity [S/m]	1.92
Group UID	LTE-TDD 10494-AAG	Phantom Section TSL	Flat HSL
Conversion Factor	7.63	Test Distance [mm]	5.00

Hardware Setup

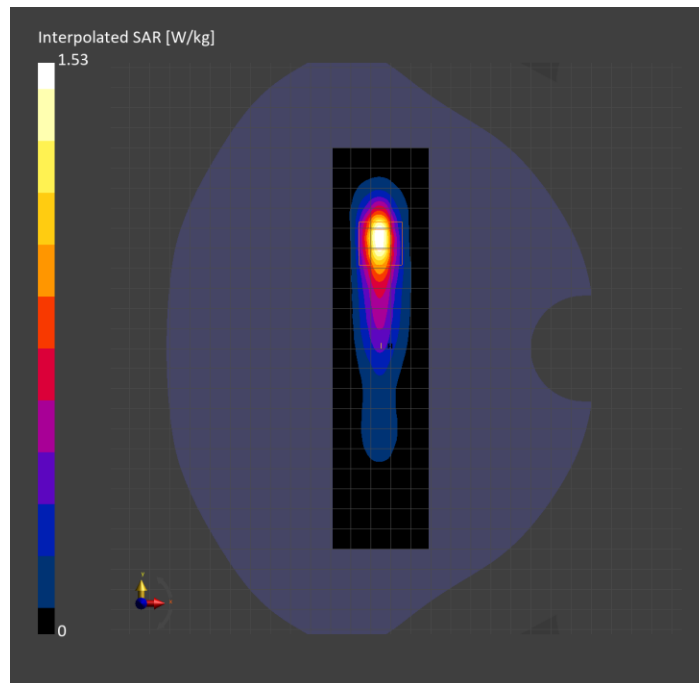
Probe Calibration Date	EX3DV4 - SN3991 2023-10-12	Phantom	Twin-SAM V5.0 (30deg probe tilt)
DAE Calibration Date	DAE4 Sn1380 2024-02-09	TSL Type	HBBL-600-10000
Software Version	16.2.4.2524		

Scan Setup

	Area Scan	Zoom Scan
Grid Extents [mm]	48.0 x 200.0	30.0 x 30.0 x 30.0
Grid Steps [mm]	8.0 x 10.0	5.0 x 5.0 x 1.5
Sensor Surface [mm]	3.0	1.4
Graded Grid	N/A	Yes
M2/M1 [%]		79.2
Dist 3dB Peak [mm]		6.8
Peak SAR [W/kg] SAR Peak Location [mm]	N/A	1.53 [-25.8, 58.5, -207.0]

Measurement Results

	Area Scan	Zoom Scan
psSAR1g [W/Kg]	0.640	0.651
psSAR10g [W/Kg]	0.262	0.263
Power Drift [dB]	N/A	-0.04



Band 48: LTE-TDD (SC-FDMA, 1 RB, 20 MHz, QPSK, UL Subframe=2,3,4,7,8,9) RBPosition:Low AntennaCfg:SISO, CHEEK

Exposure Conditions

Band	Band 48	TSL Permittivity	36.2
Frequency [MHz] Channel Number	3560.000 55340	TSL Conductivity [S/m]	2.99
Group UID	LTE-TDD 10435-AAG	Phantom Section TSL	LeftHead HSL
Conversion Factor	6.91	Test Distance [mm]	0.00

Hardware Setup

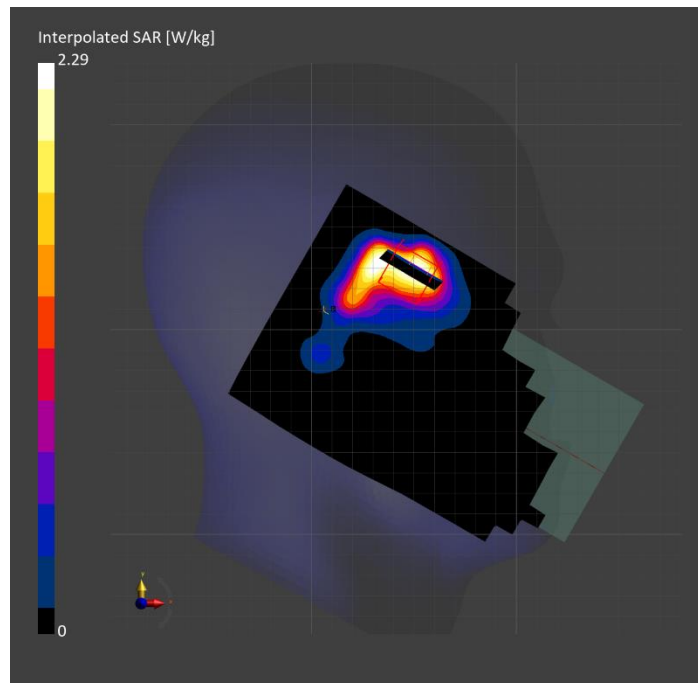
Probe Calibration Date	EX3DV4 - SN7356 2024-03-14	Phantom	Twin-SAM V5.0 (30deg probe tilt)
DAE Calibration Date	DAE4 Sn1259 2023-09-06	TSL Type	HBBL-600-10000
Software Version	16.2.4.2524		

Scan Setup

	Area Scan	Zoom Scan
Grid Extents [mm]	120.0 x 200.0	28.0 x 28.0 x 28.0
Grid Steps [mm]	10.0 x 10.0	4.5 x 4.5 x 1.4
Sensor Surface [mm]	3.0	1.4
Graded Grid	N/A	Yes
M2/M1 [%]		69.6
Dist 3dB Peak [mm]		7.1
Peak SAR [W/kg] SAR Peak Location [mm]	N/A	2.29 [53.3, 330.8, -173.3]

Measurement Results

	Area Scan	Zoom Scan
psSAR1g [W/Kg]	0.636	0.719
psSAR10g [W/Kg]	0.291	0.281
Power Drift [dB]	N/A	-0.02



WLAN 2.4GHz: IEEE 802.11b WiFi 2.4 GHz (DSSS, 1 Mbps, 99pc duty cycle), CHEEK

Exposure Conditions

Band	WLAN 2.4GHz	TSL Permittivity	39.5
Frequency [MHz] Channel Number	2462.000 11	TSL Conductivity [S/m]	1.74
Group UID	WLAN 10415-AAA	Phantom Section TSL	LeftHead HSL
Conversion Factor	7.18	Test Distance [mm]	0.00

Hardware Setup

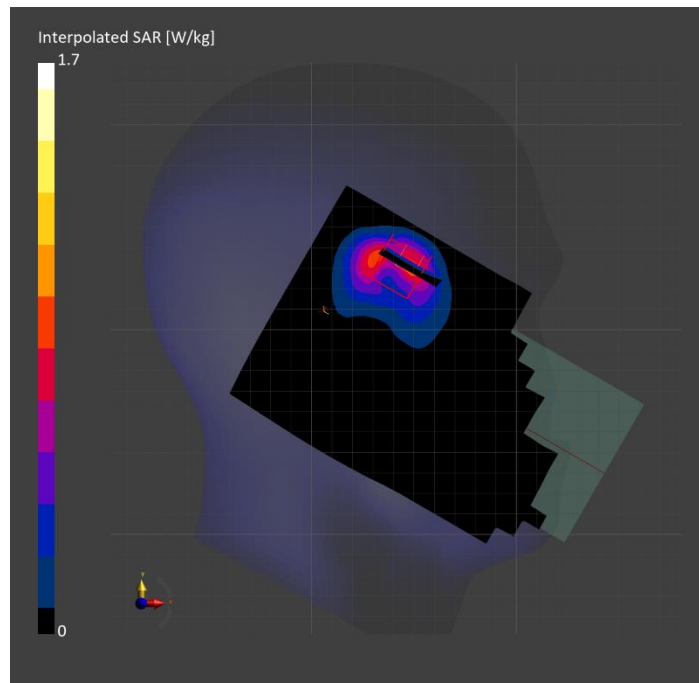
Probe Calibration Date	EX3DV4 - SN3772 2024-02-07	Phantom	Twin-SAM V8.0 (30deg probe tilt)
DAE Calibration Date	DAE4 Sn1258 2024-03-12	TSL Type	HBBL-600-10000
Software Version	16.2.4.2524		

Scan Setup

	Area Scan	Zoom Scan
Grid Extents [mm]	120.0 x 200.0	30.0 x 30.0 x 30.0
Grid Steps [mm]	10.0 x 10.0	4.7 x 4.7 x 1.5
Sensor Surface [mm]	3.0	1.4
Graded Grid	N/A	Yes
M2/M1 [%]		77.3
Dist 3dB Peak [mm]		6.0
Peak SAR [W/kg] SAR Peak Location [mm]	N/A	1.70 [48.8, 334.6, -173.4]

Measurement Results

	Area Scan	Zoom Scan
psSAR1g [W/Kg]	0.684	0.741
psSAR10g [W/Kg]	0.339	0.336
Power Drift [dB]	-0.02	-0.00



WLAN 5GHz: IEEE 802.11ac WiFi (80MHz, MCS0, 99pc duty cycle), BACK

Exposure Conditions

Band	WLAN 5GHz	TSL Permittivity	35.0
Frequency [MHz] Channel Number	5775.000 155	TSL Conductivity [S/m]	5.12
Group UID	WLAN 10544-AAD	Phantom Section TSL	Flat HSL
Conversion Factor	5.2	Test Distance [mm]	5.00

Hardware Setup

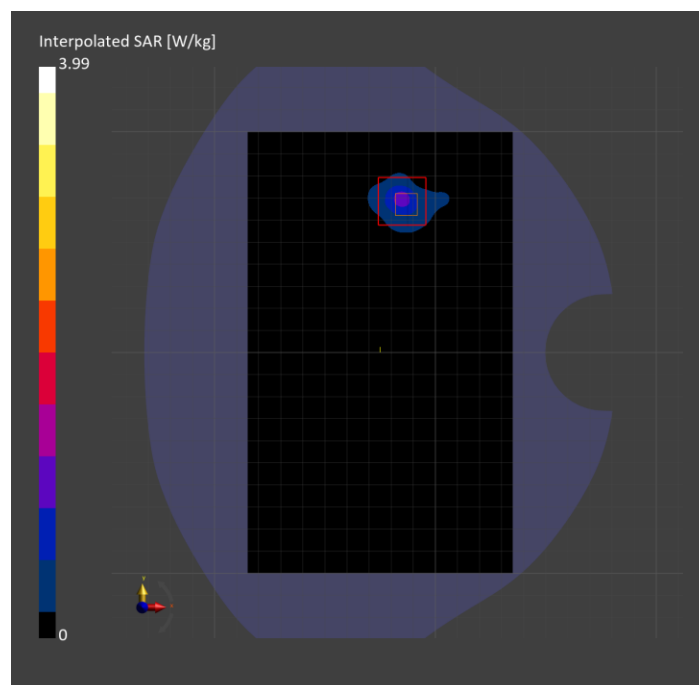
Probe Calibration Date	EX3DV4 - SN3902 2024-03-12	Phantom	Twin-SAM V5.0 (30deg probe tilt)
DAE Calibration Date	DAE4 Sn1799 2023-04-04	TSL Type	HBBL-600-10000
Software Version	16.2.4.2524		

Scan Setup

	Area Scan	Zoom Scan
Grid Extents [mm]	120.0 x 200.0	22.0 x 22.0 x 22.0
Grid Steps [mm]	10.0 x 10.0	3.6 x 3.6 x 1.4
Sensor Surface [mm]	3.0	1.4
Graded Grid	N/A	Yes
M2/M1 [%]		60.2
Dist 3dB Peak [mm]		4.9
Peak SAR [W/kg] SAR Peak Location [mm]	N/A	3.99 [-12.5, 67.8, -207.0]

Measurement Results

	Area Scan	Zoom Scan
psSAR1g [W/Kg]	0.765	0.884
psSAR10g [W/Kg]	0.235	0.250
Power Drift [dB]	-0.02	0.01



Custom Band: CW, EDGE RIGHT

Exposure Conditions

Band	Custom Band	TSL Permittivity	38.5
Frequency [MHz] Channel Number	2441.000 2441000	TSL Conductivity [S/m]	1.74
Group UID	CW 0--	Phantom Section TSL	Flat HSL
Conversion Factor	6.96	Test Distance [mm]	5.00

Hardware Setup

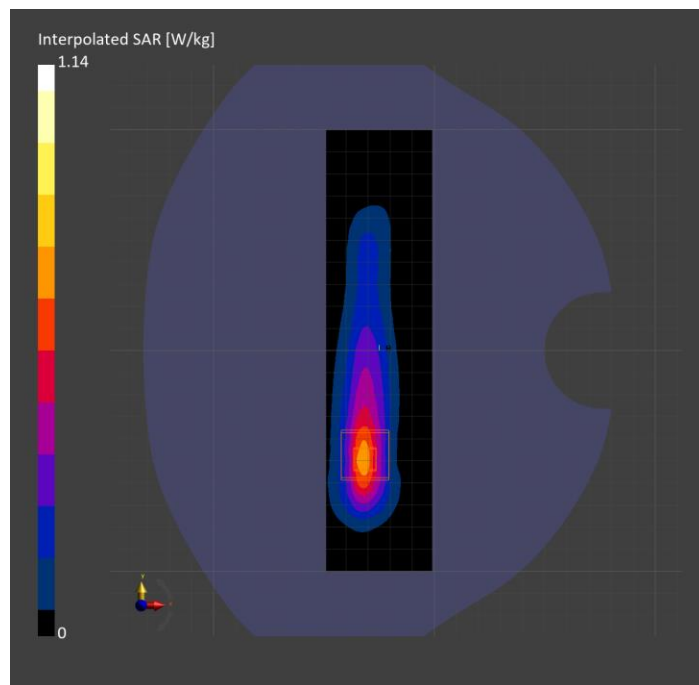
Probe Calibration Date	EX3DV4 - SN7779 2024-05-10	Phantom	Twin-SAM V8.0 (30deg probe tilt)
DAE Calibration Date	DAE4 Sn1439 2024-04-24	TSL Type	HBBL-600-10000
Software Version	16.2.4.2524		

Scan Setup

	Area Scan	Zoom Scan
Grid Extents [mm]	48.0 x 200.0	30.0 x 30.0 x 30.0
Grid Steps [mm]	8.0 x 10.0	5.0 x 5.0 x 1.5
Sensor Surface [mm]	3.0	1.4
Graded Grid	N/A	Yes
M2/M1 [%]		81.7
Dist 3dB Peak [mm]		7.1
Peak SAR [W/kg] SAR Peak Location [mm]	N/A	1.14 [-31.7, -48.0, -207.0]

Measurement Results

	Area Scan	Zoom Scan
psSAR1g [W/Kg]	0.545	0.561
psSAR10g [W/Kg]	0.245	0.251
Power Drift [dB]	N/A	-0.00



Custom Band: CW, EDGE TOP

Exposure Conditions

Band	Custom Band	TSL Permittivity	52.8
Frequency [MHz] Channel Number	13.600 13600	TSL Conductivity [S/m]	0.702
Group UID	CW 0--	Phantom Section TSL	Flat HSL
Conversion Factor	17.98	Test Distance [mm]	0.00

Hardware Setup

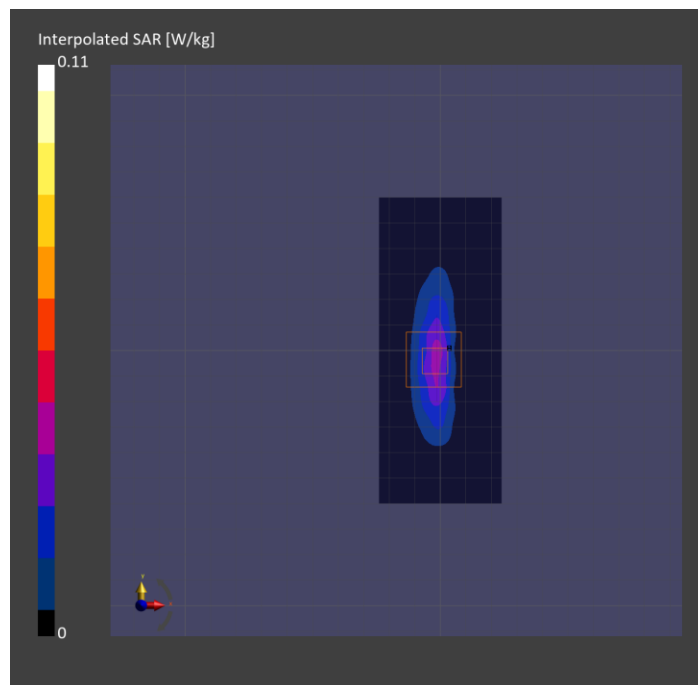
Probe Calibration Date	EX3DV4 - SN3991 2023-10-12	Phantom	ELI V5.0 (20deg probe tilt)
DAE Calibration Date	DAE4 Sn1380 2024-02-09	TSL Type	HBBL-600-10000
Software Version	16.2.4.2524		

Scan Setup

	Area Scan	Zoom Scan
Grid Extents [mm]	48.0 x 120.0	30.0 x 30.0 x 30.0
Grid Steps [mm]	8.0 x 15.0	4.2 x 4.2 x 1.4
Sensor Surface [mm]	3.0	1.4
Graded Grid	N/A	Yes
M2/M1 [%]		60.7
Dist 3dB Peak [mm]		5.1
Peak SAR [W/kg] SAR Peak Location [mm]	N/A	0.110 [-1.4, -3.2, -180.4]

Measurement Results

	Area Scan	Zoom Scan
psSAR1g [W/Kg]	0.030	0.028
psSAR10g [W/Kg]	0.017	0.010
Power Drift [dB]	N/A	-0.05



U-NII-8: IEEE 802.11ax (160MHz, MCS0, 99pc duty cycle), BACK

Exposure Conditions

Band	U-NII-8	TSL Permittivity	32.8
Frequency [MHz] Channel Number	6985.000 207	TSL Conductivity [S/m]	6.58
Group UID	WLAN 10755-AAC	Phantom Section TSL	Flat HSL
Conversion Factor	5.24	Test Distance [mm]	5.00

Hardware Setup

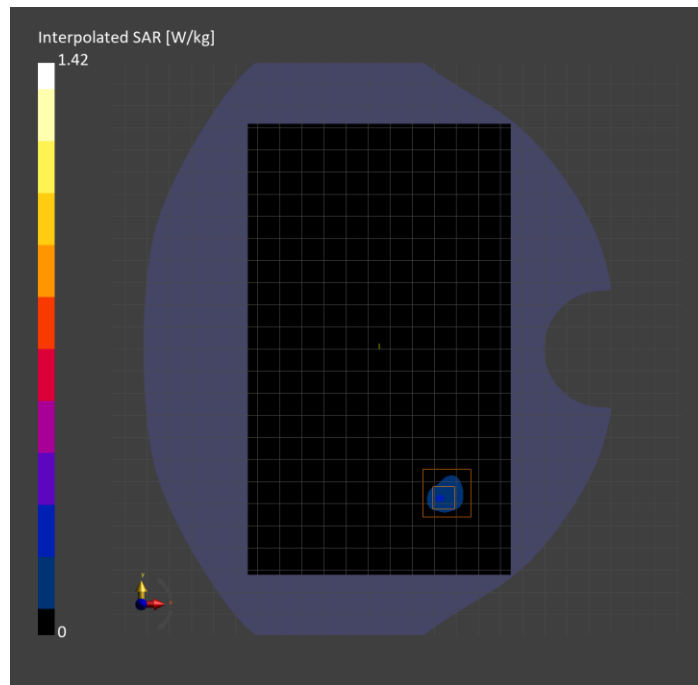
Probe Calibration Date	EX3DV4 - SN7498 2024-03-12	Phantom	Twin-SAM V8.0 (30deg probe tilt)
DAE Calibration Date	DAE4 Sn1796 2024-05-02	TSL Type	HBBL-600-10000
Software Version	16.2.4.2524		

Scan Setup

	Area Scan	Zoom Scan
Grid Extents [mm]	119.0 x 204.0	22.0 x 22.0 x 22.0
Grid Steps [mm]	8.5 x 8.5	3.4 x 3.4 x 1.4
Sensor Surface [mm]	3.0	1.4
Graded Grid	N/A	Yes
M2/M1 [%]		48.0
Dist 3dB Peak [mm]		5.5
Peak SAR [W/kg] SAR Peak Location [mm]	N/A	1.42 [4.5, -67.6, -207.0]

Measurement Results

	Area Scan	Zoom Scan	APD
psSAR1g [W/Kg]	0.188	0.243	N/A
psSAR8g [W/Kg]	0.061	0.071	N/A
psSAR10g [W/Kg]	0.052	0.060	N/A
psAPD (4.0cm ² , sq.) [W/m ²]	N/A	N/A	1.41
Power Drift [dB]	-0.19	-0.01	-0.01



**Band 41: LTE-TDD (SC-FDMA, 50% RB, 20 MHz, QPSK, UL Subframe=2,3,4,7,8,9)
RBPosition:High AntennaCfg:SISO, EDGE RIGHT**

Exposure Conditions

Band	Band 41	TSL Permittivity	37.7
Frequency [MHz] Channel Number	2593.000 40620	TSL Conductivity [S/m]	1.92
Group UID	LTE-TDD 10494-AAG	Phantom Section TSL	Flat HSL
Conversion Factor	7.63	Test Distance [mm]	5.00

Hardware Setup

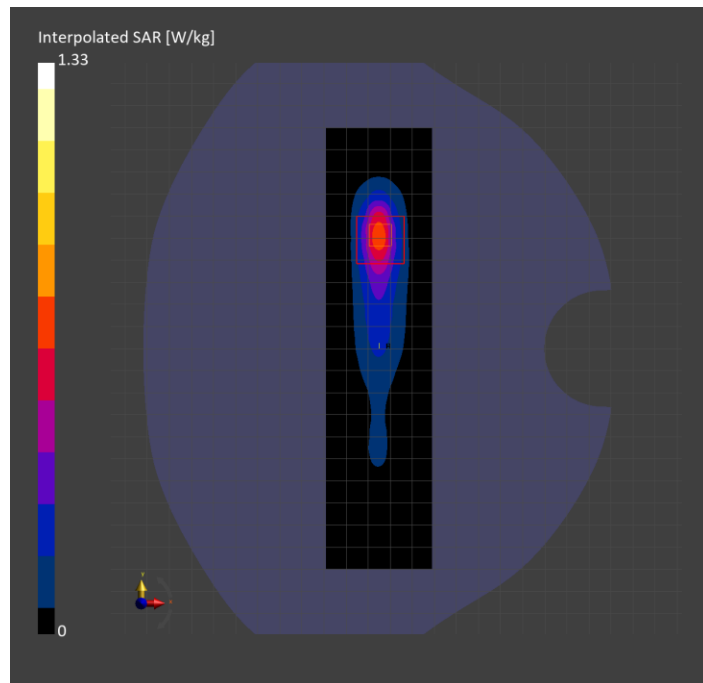
Probe Calibration Date	EX3DV4 - SN3991 2023-10-12	Phantom	Twin-SAM V5.0 (30deg probe tilt)
DAE Calibration Date	DAE4 Sn1380 2024-02-09	TSL Type	HBBL-600-10000
Software Version	16.2.4.2524		

Scan Setup

	Area Scan	Zoom Scan
Grid Extents [mm]	48.0 x 200.0	30.0 x 30.0 x 30.0
Grid Steps [mm]	8.0 x 10.0	5.0 x 5.0 x 1.5
Sensor Surface [mm]	3.0	1.4
Graded Grid	N/A	Yes
M2/M1 [%]		79.0
Dist 3dB Peak [mm]		7.0
Peak SAR [W/kg] SAR Peak Location [mm]	N/A	1.33 [-24.0, 52.5, -207.0]

Measurement Results

	Area Scan	Zoom Scan
psSAR1g [W/Kg]	0.545	0.573
psSAR10g [W/Kg]	0.226	0.235
Power Drift [dB]	N/A	0.12



Band 48: LTE-TDD (SC-FDMA, 1 RB, 20 MHz, QPSK, UL Subframe=2,3,4,7,8,9) RBPosition:Low AntennaCfg:SISO, CHEEK

Exposure Conditions

Band	Band 48	TSL Permittivity	36.2
Frequency [MHz] Channel Number	3560.000 55340	TSL Conductivity [S/m]	2.99
Group UID	LTE-TDD 10435-AAG	Phantom Section TSL	LeftHead HSL
Conversion Factor	6.91	Test Distance [mm]	0.00

Hardware Setup

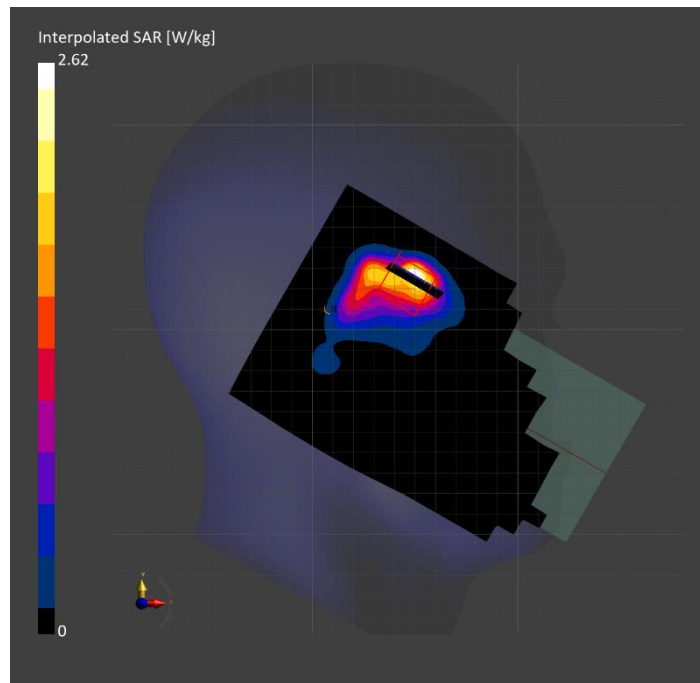
Probe Calibration Date	EX3DV4 - SN7356 2024-03-14	Phantom	Twin-SAM V5.0 (30deg probe tilt)
DAE Calibration Date	DAE4 Sn1259 2023-09-06	TSL Type	HBBL-600-10000
Software Version	16.2.4.2524		

Scan Setup

	Area Scan	Zoom Scan
Grid Extents [mm]	120.0 x 200.0	28.0 x 28.0 x 28.0
Grid Steps [mm]	10.0 x 10.0	5.0 x 5.0 x 1.4
Sensor Surface [mm]	3.0	1.4
Graded Grid	N/A	Yes
M2/M1 [%]		68.3
Dist 3dB Peak [mm]		5.5
Peak SAR [W/kg] SAR Peak Location [mm]	N/A	2.62 [51.9, 326.1, -174.2]

Measurement Results

	Area Scan	Zoom Scan
psSAR1g [W/Kg]	0.767	0.782
psSAR10g [W/Kg]	0.319	0.312
Power Drift [dB]	N/A	-0.07



WLAN 2.4GHz: IEEE 802.11b WiFi 2.4 GHz (DSSS, 1 Mbps, 99pc duty cycle), CHEEK

Exposure Conditions

Band	WLAN 2.4GHz	TSL Permittivity	39.5
Frequency [MHz] Channel Number	2462.000 11	TSL Conductivity [S/m]	1.74
Group UID	WLAN 10415-AAA	Phantom Section TSL	LeftHead HSL
Conversion Factor	7.18	Test Distance [mm]	0.00

Hardware Setup

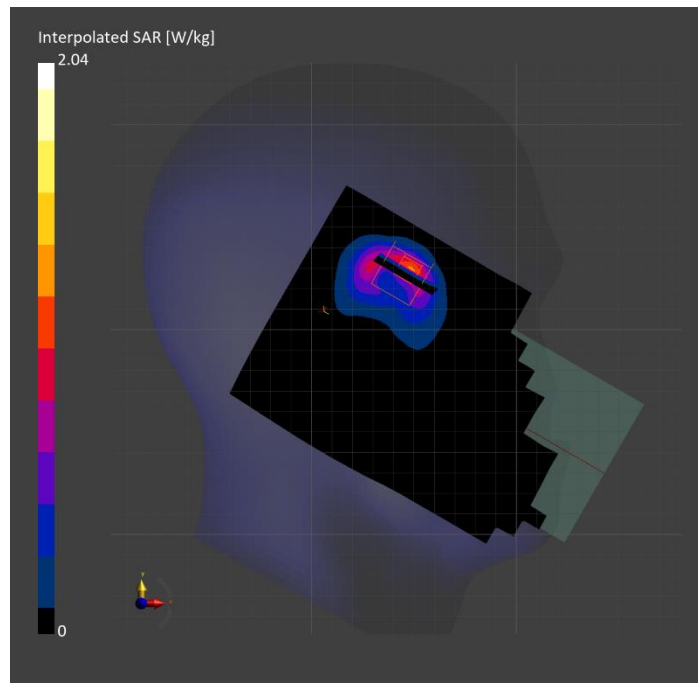
Probe Calibration Date	EX3DV4 - SN3772 2024-02-07	Phantom	Twin-SAM V8.0 (30deg probe tilt)
DAE Calibration Date	DAE4 Sn1258 2024-03-12	TSL Type	HBBL-600-10000
Software Version	16.2.4.2524		

Scan Setup

	Area Scan	Zoom Scan
Grid Extents [mm]	120.0 x 200.0	30.0 x 30.0 x 30.0
Grid Steps [mm]	10.0 x 10.0	4.2 x 4.2 x 1.5
Sensor Surface [mm]	3.0	1.4
Graded Grid	N/A	Yes
M2/M1 [%]		78.6
Dist 3dB Peak [mm]		6.0
Peak SAR [W/kg] SAR Peak Location [mm]	N/A	2.04 [47.9, 330.3, -174.1]

Measurement Results

	Area Scan	Zoom Scan
psSAR1g [W/Kg]	0.834	0.859
psSAR10g [W/Kg]	0.368	0.371
Power Drift [dB]	-0.06	-0.02



WLAN 5GHz: IEEE 802.11ac WiFi (80MHz, MCS0, 99pc duty cycle), BACK

Exposure Conditions

Band	WLAN 5GHz	TSL Permittivity	35.0
Frequency [MHz] Channel Number	5775.000 155	TSL Conductivity [S/m]	5.12
Group UID	WLAN 10544-AAD	Phantom Section TSL	Flat HSL
Conversion Factor	5.2	Test Distance [mm]	5.00

Hardware Setup

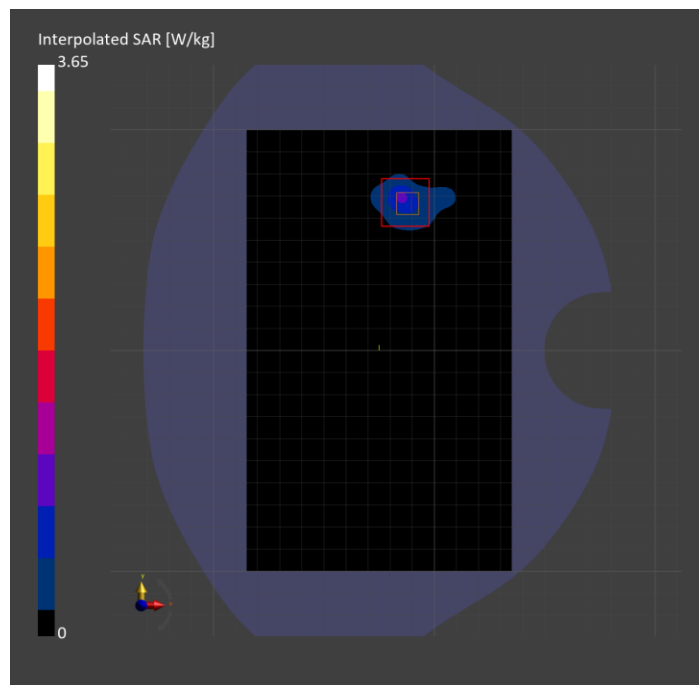
Probe Calibration Date	EX3DV4 - SN3902 2024-03-12	Phantom	Twin-SAM V5.0 (30deg probe tilt)
DAE Calibration Date	DAE4 Sn1799 2023-04-04	TSL Type	HBBL-600-10000
Software Version	16.2.4.2524		

Scan Setup

	Area Scan	Zoom Scan
Grid Extents [mm]	120.0 x 200.0	22.0 x 22.0 x 22.0
Grid Steps [mm]	10.0 x 10.0	3.9 x 3.9 x 1.4
Sensor Surface [mm]	3.0	1.4
Graded Grid	N/A	Yes
M2/M1 [%]		60.7
Dist 3dB Peak [mm]		5.0
Peak SAR [W/kg] SAR Peak Location [mm]	N/A	3.65 [-10.6, 66.6, -207.0]

Measurement Results

	Area Scan	Zoom Scan
psSAR1g [W/Kg]	0.645	0.824
psSAR10g [W/Kg]	0.206	0.230
Power Drift [dB]	0.02	-0.01



Custom Band: CW, EDGE RIGHT

Exposure Conditions

Band	Custom Band	TSL Permittivity	38.5
Frequency [MHz] Channel Number	2441.000 2441000	TSL Conductivity [S/m]	1.74
Group UID	CW 10670--	Phantom Section TSL	Flat HSL
Conversion Factor	6.96	Test Distance [mm]	5.00

Hardware Setup

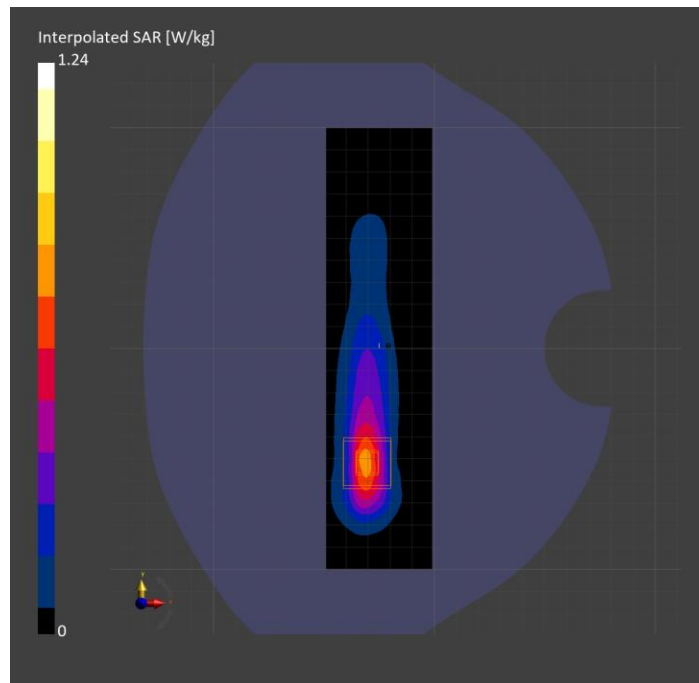
Probe Calibration Date	EX3DV4 - SN7779 2024-05-10	Phantom	Twin-SAM V8.0 (30deg probe tilt)
DAE Calibration Date	DAE4 Sn1439 2024-04-24	TSL Type	HBBL-600-10000
Software Version	16.2.4.2524		

Scan Setup

	Area Scan	Zoom Scan
Grid Extents [mm]	48.0 x 200.0	30.0 x 30.0 x 30.0
Grid Steps [mm]	8.0 x 10.0	5.0 x 5.0 x 1.5
Sensor Surface [mm]	3.0	1.4
Graded Grid	N/A	Yes
M2/M1 [%]		81.9
Dist 3dB Peak [mm]		7.0
Peak SAR [W/kg] SAR Peak Location [mm]	N/A	1.24 [-30.4, -51.0, -207.0]

Measurement Results

	Area Scan	Zoom Scan
psSAR1g [W/Kg]	0.583	0.601
psSAR10g [W/Kg]	0.259	0.260
Power Drift [dB]	N/A	0.00



Custom Band: CW, EDGE TOP

Exposure Conditions

Band	Custom Band	TSL Permittivity	52.8
Frequency [MHz] Channel Number	13.600 13600	TSL Conductivity [S/m]	0.702
Group UID	CW 0--	Phantom Section TSL	Flat HSL
Conversion Factor	17.98	Test Distance [mm]	0.00

Hardware Setup

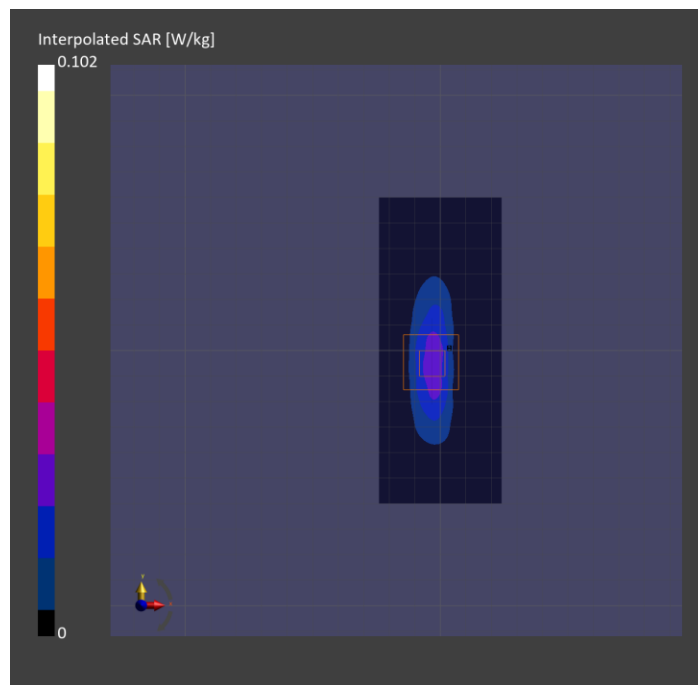
Probe Calibration Date	EX3DV4 - SN3991 2023-10-12	Phantom	ELI V5.0 (20deg probe tilt)
DAE Calibration Date	DAE4 Sn1380 2024-02-09	TSL Type	HBBL-600-10000
Software Version	16.2.4.2524		

Scan Setup

	Area Scan	Zoom Scan
Grid Extents [mm]	48.0 x 120.0	30.0 x 30.0 x 30.0
Grid Steps [mm]	8.0 x 15.0	4.2 x 4.2 x 1.4
Sensor Surface [mm]	3.0	1.4
Graded Grid	N/A	Yes
M2/M1 [%]		60.7
Dist 3dB Peak [mm]		5.1
Peak SAR [W/kg] SAR Peak Location [mm]	N/A	0.102 [-3.3, -5.0, -180.8]

Measurement Results

	Area Scan	Zoom Scan
psSAR1g [W/Kg]	0.027	0.026
psSAR10g [W/Kg]	0.016	0.009
Power Drift [dB]	N/A	0.13



U-NII-8: IEEE 802.11ax (160MHz, MCS0, 99pc duty cycle), BACK

Exposure Conditions

Band	U-NII-8	TSL Permittivity	32.8
Frequency [MHz] Channel Number	6985.000 207	TSL Conductivity [S/m]	6.58
Group UID	WLAN 10755-AAC	Phantom Section TSL	Flat HSL
Conversion Factor	5.24	Test Distance [mm]	5.00

Hardware Setup

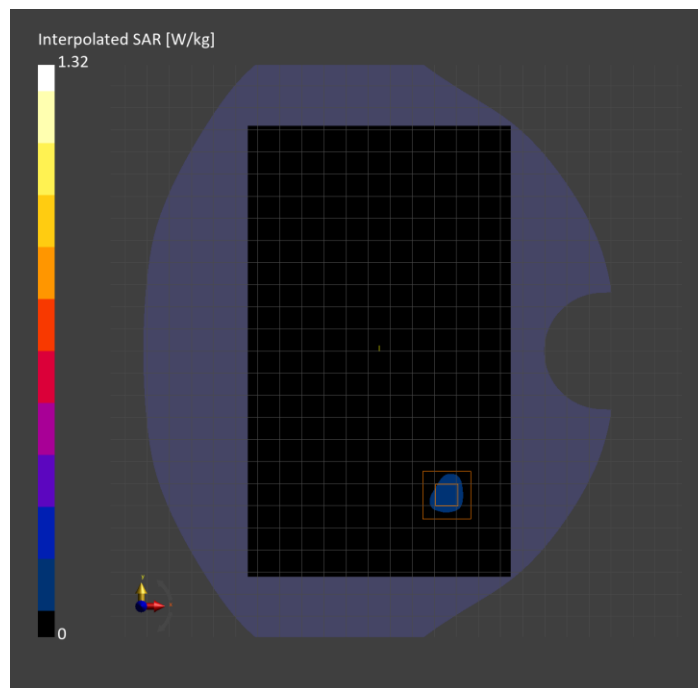
Probe Calibration Date	EX3DV4 - SN7498 2024-03-12	Phantom	Twin-SAM V8.0 (30deg probe tilt)
DAE Calibration Date	DAE4 Sn1796 2024-05-02	TSL Type	HBBL-600-10000
Software Version	16.2.4.2524		

Scan Setup

	Area Scan	Zoom Scan
Grid Extents [mm]	119.0 x 204.0	22.0 x 22.0 x 22.0
Grid Steps [mm]	8.5 x 8.5	3.4 x 3.4 x 1.4
Sensor Surface [mm]	3.0	1.4
Graded Grid	N/A	Yes
M2/M1 [%]		48.0
Dist 3dB Peak [mm]		5.2
Peak SAR [W/kg] SAR Peak Location [mm]	N/A	1.33 [4.7, -65.6, -207.0]

Measurement Results

	Area Scan	Zoom Scan	APD
psSAR1g [W/Kg]	0.165	0.230	N/A
psSAR8g [W/Kg]	0.053	0.068	N/A
psSAR10g [W/Kg]	0.046	0.058	N/A
psAPD (4.0cm ² , sq.) [W/m ²]	N/A	N/A	1.35
Power Drift [dB]	-0.23	-0.15	-0.15



SAR Dielectric Property Measurements and System Checks

Liquid Check											System Check													
SAR Lab	Date	Tissue Type	Band (MHz)	Freq. (MHz)	Relative Permittivity (εr)			Conductivity (σ)			Date	Dipole Type & Serial Number	Dipole Cal. Due Date	Input Power (dBm)	Measured results for 1-g SAR				Measured results for 10-g SAR				Plot No.	
					Measured	Target	Delta	Measured	Target	Delta					Meas. Zoom Scan	Normalize to 1 W	Target (Ref. Value)	Delta ±10%	Meas. Zoom Scan	Normalize to 1 W	Target (Ref. Value)	Delta ±10%		
SAR E	7/29/2024	Head	3500	3500	36.28	37.93	-4.35%	2.94	2.91	1.04%	7/29/2024	D3500V2 SN: 1060	2/7/2025	20.0	6.820	68.200	65.700	3.81%	2.550	25.500	24.900	2.41%	28	
				3400	36.41	38.04	-4.29%	2.87	2.81	2.20%														
				3700	36.03	37.70	-4.43%	3.08	3.12	-1.03%														
SAR G	7/26/2024	Head	13	13	51.94	55.00	-5.56%	0.70	0.75	-6.41%	7/26/2024	CLA13 SN: 1008	1/12/2025	30.0	0.492	0.492	0.544	-9.56%	0.309	0.309	0.338	-8.58%	29	
				12	51.42	55.00	-6.51%	0.70	0.75	-6.40%														
				14	52.82	55.00	-3.96%	0.70	0.75	-6.37%														
SAR G	7/29/2024	Head	2300	2300	38.22	39.47	-3.17%	1.70	1.66	2.18%	7/29/2024	D2300V2 SN: 1002	4/11/2025	20.0	5.010	50.100	48.700	2.87%	2.430	24.300	23.800	2.10%	30	
				2350	38.15	39.38	-3.13%	1.74	1.71	1.72%														
				2400	38.05	39.30	-3.17%	1.77	1.75	1.10%														
SAR G	7/28/2024	Head	2600	2600	37.68	39.01	-3.41%	1.92	1.96	-1.94%	7/29/2024	D2600V2 SN: 1036	4/11/2025	20.0	5.670	56.700	55.400	2.35%	2.560	25.600	24.900	2.81%	31	
				2495	37.87	39.14	-3.25%	1.84	1.85	-0.41%														
				2690	37.53	38.90	-3.52%	1.99	2.06	-3.32%														
SAR 1	7/30/2024	Head	2450	2450	39.56	39.20	0.92%	1.73	1.80	-3.83%	7/30/2024	D2450V2 SN: 706	1/20/2025	20.0	5.240	52.400	52.300	0.19%	2.490	24.900	24.500	1.63%	32	
				2400	39.64	39.30	0.87%	1.69	1.75	-3.52%														
				2500	39.46	39.14	0.83%	1.77	1.85	-4.48%														
SAR 5	7/30/2024	Head	2450	2450	38.85	39.20	-0.89%	1.75	1.80	-2.78%	7/30/2024	D2450V2 SN: 706	1/20/2025	20.0	5.190	51.900	52.300	-0.76%	2.460	24.600	24.500	0.41%	33	
				2400	38.59	39.30	-1.80%	1.71	1.75	-2.38%														
				2500	38.41	39.14	-1.86%	1.79	1.85	-3.35%														
SAR 9	7/29/2024	Head	5750	5750	34.91	35.36	-1.28%	5.09	5.21	-2.41%	7/29/2024	D5GHzV2 SN: 1003 (5.75 GHz)	2/22/2025	20.0	7.350	73.500	79.300	-7.31%	2.110	21.100	22.400	-5.80%	34	
				5700	35.07	35.42	-0.99%	4.98	5.16	-3.48%														
				5850	34.73	35.30	-1.61%	5.28	5.32	-0.71%														
SAR 12	7/29/2024	Head	1640	1640	42.81	40.25	6.35%	1.26	1.31	-3.97%	7/29/2024	D1640V2 SN: 324	6/13/2025	20.0	3.290	32.900	33.900	-2.95%	1.850	18.500	18.300	1.09%	35	
				1610	42.82	40.30	6.25%	1.24	1.29	-4.03%														
				1665	42.77	40.22	6.35%	1.27	1.32	-3.79%														
SAR 18	7/29/2024	Head	2450	2450	40.54	39.20	3.42%	1.80	1.80	0.00%	7/29/2024	D2450V2 SN: 748	2/8/2025	20.0	5.470	54.700	51.700	5.80%	2.600	26.000	24.200	7.44%	36	
				2400	40.61	39.30	3.34%	1.76	1.75	0.65%														
				2500	40.46	39.14	3.38%	1.84	1.85	-0.81%														

Liquid Check											System Check																
SAR Lab	Date	Tissue Type	Band (MHz)	Freq. (MHz)	Relative Permittivity (εr)			Conductivity (σ)			Date	Dipole Type & Serial Number	Dipole Cal. Due Date	Input Power (dBm)	Measured results for 1-g SAR				Measured results for 10-g SAR				Measured results for APD 4 cm ²				Plot No.
					Measured	Target	Delta	Measured	Target	Delta					Meas. Zoom Scan	Normalize to 1 W	Target (Ref. Value)	Delta ±10%	Meas. Zoom Scan	Normalize to 1 W	Target (Ref. Value)	Delta ±10%	Meas. Zoom Scan	Normalize to 1 W	Target (Ref. Value)	Delta ±10%	
SAR 2	8/2/2024	Head	6500	6500	33.71	34.50	-2.29%	6.03	6.07	-0.61%	8/2/2024	D6.5GHzV2 SN: 1033	3/15/2025	19.0	25.100	315.990	288.000	9.72%	4.630	58.288	53.100	9.77%	113.000	1422.586	1300.000	9.43%	37
				5900	34.86	35.20	-0.97%	5.27	5.38	-2.01%																	
				7200	32.60	33.70	-3.26%	6.77	6.89	-1.68%																	

System Performance Check Report for D3500V2 - SN1060

Exposure Conditions

Frequency [MHz] Channel Number	3500.000 0	TSL Permittivity	36.3
Group UID	CW 0--	TSL Conductivity [S/m]	2.94
Conversion Factor	6.91	Phantom Section TSL	Flat HSL

Hardware Setup

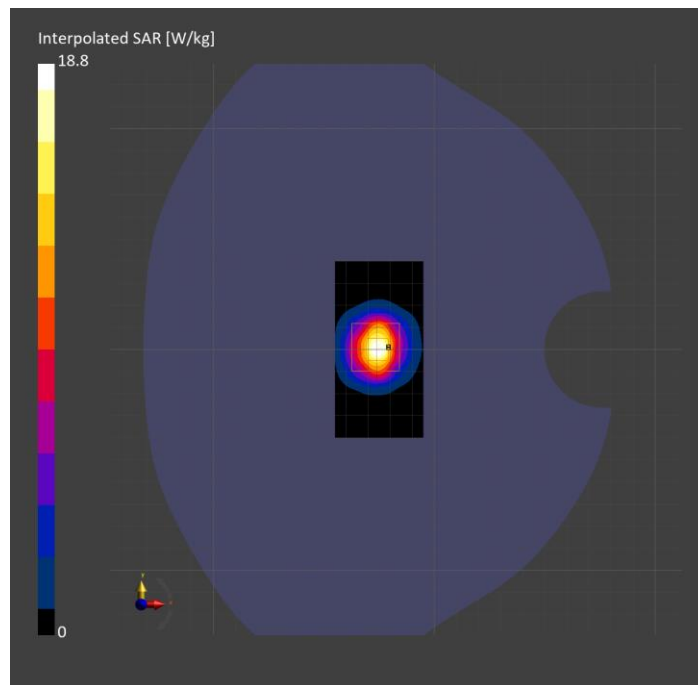
Probe Calibration Date	EX3DV4 - SN7356 2024-03-14	Phantom	Twin-SAM V5.0 (30deg probe tilt)
DAE Calibration Date	DAE4 Sn1259 2023-09-06	TSL Type	HBBL-600-10000
Software Version	16.2.4.2524		

Scans Setup

	Area Scan	Zoom Scan
Grid Extents [mm]	40.0 x 80.0	28.0 x 28.0 x 28.0
Grid Steps [mm]	10.0 x 10.0	5.0 x 5.0 x 1.4
Sensor Surface [mm]	3.0	1.4
Graded Grid	N/A	Yes
M2/M1 [%]		73.5
Dist 3dB Peak [mm]		8.6

Measurement Results

	Area Scan	Zoom Scan
psSAR1g [W/Kg]	6.53	6.82
psSAR10g [W/Kg]	2.49	2.55
Power Drift [dB]	N/A	0.28



System Performance Check Report for CLA-13 - SN1008

Exposure Conditions

Frequency [MHz] Channel Number	13.000 0	TSL Permittivity	51.9
Group UID	CW 0--	TSL Conductivity [S/m]	0.702
Conversion Factor	17.98	Phantom Section TSL	Flat HSL

Hardware Setup

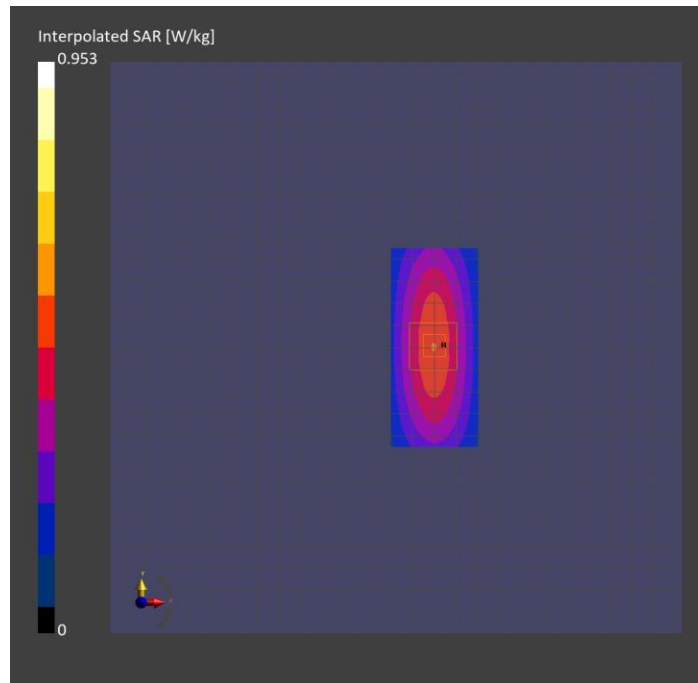
Probe Calibration Date	EX3DV4 - SN3991 2023-10-12	Phantom	ELI V5.0 (20deg probe tilt)
DAE Calibration Date	DAE4 Sn1380 2024-02-09	TSL Type	HBBL-600-10000
Software Version	16.2.4.2524		

Scans Setup

	Area Scan	Zoom Scan
Grid Extents [mm]	40.0 x 90.0	30.0 x 30.0 x 30.0
Grid Steps [mm]	10.0 x 15.0	6.0 x 6.0 x 1.5
Sensor Surface [mm]	3.0	1.4
Graded Grid	N/A	Yes
M2/M1 [%]		76.4
Dist 3dB Peak [mm]		15.7

Measurement Results

	Area Scan	Zoom Scan
psSAR1g [W/Kg]	0.518	0.492
psSAR10g [W/Kg]	0.416	0.309
Power Drift [dB]	N/A	0.02



System Performance Check Report for D2300V2 - SN1002

Exposure Conditions

Frequency [MHz] Channel Number	2300.000 0	TSL Permittivity	38.2
Group UID	CW 0--	TSL Conductivity [S/m]	1.70
Conversion Factor	7.98	Phantom Section TSL	Flat HSL

Hardware Setup

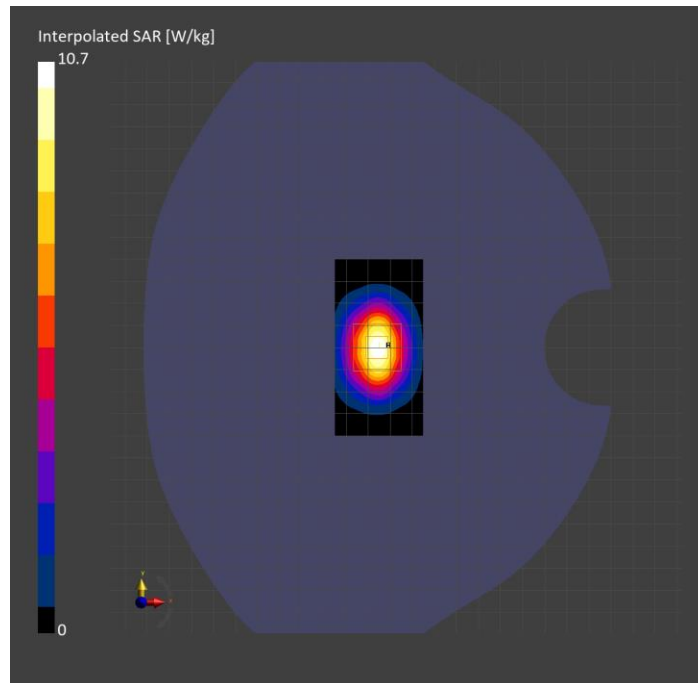
Probe Calibration Date	EX3DV4 - SN3991 2023-10-12	Phantom	Twin-SAM V5.0 (30deg probe tilt)
DAE Calibration Date	DAE4 Sn1380 2024-02-09	TSL Type	HBBL-600-10000
Software Version	16.2.4.2524		

Scans Setup

	Area Scan	Zoom Scan
Grid Extents [mm]	40.0 x 80.0	30.0 x 30.0 x 30.0
Grid Steps [mm]	10.0 x 10.0	5.0 x 5.0 x 1.5
Sensor Surface [mm]	3.0	1.4
Graded Grid	N/A	Yes
M2/M1 [%]		79.4
Dist 3dB Peak [mm]		9.9

Measurement Results

	Area Scan	Zoom Scan
psSAR1g [W/Kg]	4.93	5.01
psSAR10g [W/Kg]	2.40	2.43
Power Drift [dB]	N/A	0.00



System Performance Check Report for D2600V2 - SN1036

Exposure Conditions

Frequency [MHz] Channel Number	2600.000 0	TSL Permittivity	37.7
Group UID	CW 0--	TSL Conductivity [S/m]	1.92
Conversion Factor	7.63	Phantom Section TSL	Flat HSL

Hardware Setup

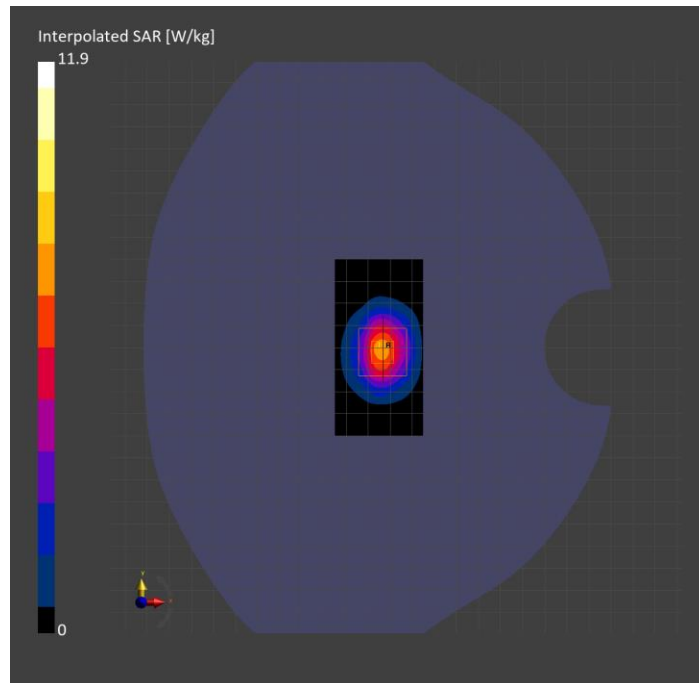
Probe Calibration Date	EX3DV4 - SN3991 2023-10-12	Phantom	Twin-SAM V5.0 (30deg probe tilt)
DAE Calibration Date	DAE4 Sn1380 2024-02-09	TSL Type	HBBL-600-10000
Software Version	16.2.4.2524		

Scans Setup

	Area Scan	Zoom Scan
Grid Extents [mm]	40.0 x 80.0	30.0 x 30.0 x 30.0
Grid Steps [mm]	10.0 x 10.0	5.0 x 5.0 x 1.5
Sensor Surface [mm]	3.0	1.4
Graded Grid	N/A	Yes
M2/M1 [%]		81.1
Dist 3dB Peak [mm]		9.3

Measurement Results

	Area Scan	Zoom Scan
psSAR1g [W/Kg]	5.80	5.67
psSAR10g [W/Kg]	2.61	2.56
Power Drift [dB]	N/A	-0.00



System Performance Check Report for D2450V2 - SN706

Exposure Conditions

Frequency [MHz] Channel Number	2450.000 0	TSL Permittivity	39.6
Group UID	CW 0--	TSL Conductivity [S/m]	1.73
Conversion Factor	7.18	Phantom Section TSL	Flat HSL

Hardware Setup

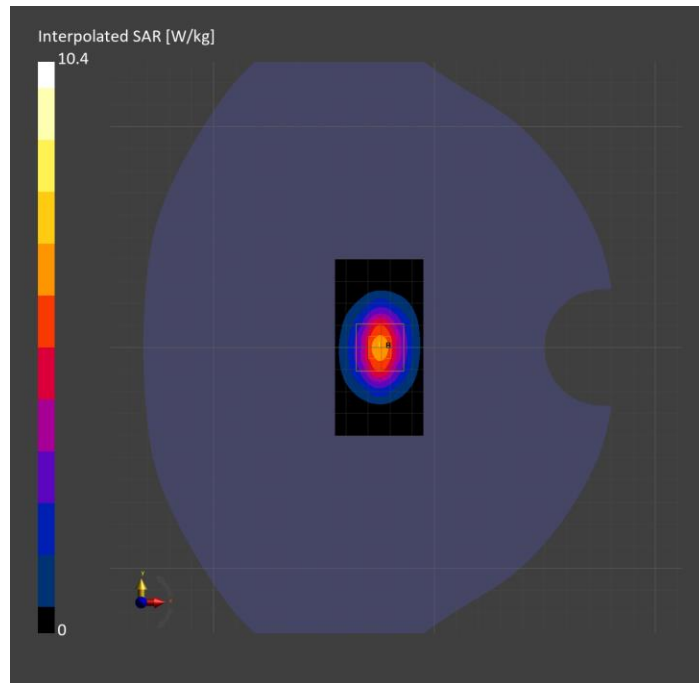
Probe Calibration Date	EX3DV4 - SN3772 2024-02-07	Phantom	Twin-SAM V8.0 (30deg probe tilt)
DAE Calibration Date	DAE4 Sn1258 2024-03-12	TSL Type	HBBL-600-10000
Software Version	16.2.4.2524		

Scans Setup

	Area Scan	Zoom Scan
Grid Extents [mm]	40.0 x 80.0	30.0 x 30.0 x 30.0
Grid Steps [mm]	10.0 x 10.0	5.0 x 5.0 x 1.5
Sensor Surface [mm]	3.0	1.4
Graded Grid	N/A	Yes
M2/M1 [%]		81.3
Dist 3dB Peak [mm]		8.6

Measurement Results

	Area Scan	Zoom Scan
psSAR1g [W/Kg]	5.22	5.24
psSAR10g [W/Kg]	2.40	2.49
Power Drift [dB]	0.00	-0.00



System Performance Check Report for D2450V2 - SN706

Exposure Conditions

Frequency [MHz] Channel Number	2450.000 0	TSL Permittivity	38.5
Group UID	CW 0--	TSL Conductivity [S/m]	1.75
Conversion Factor	6.96	Phantom Section TSL	Flat HSL

Hardware Setup

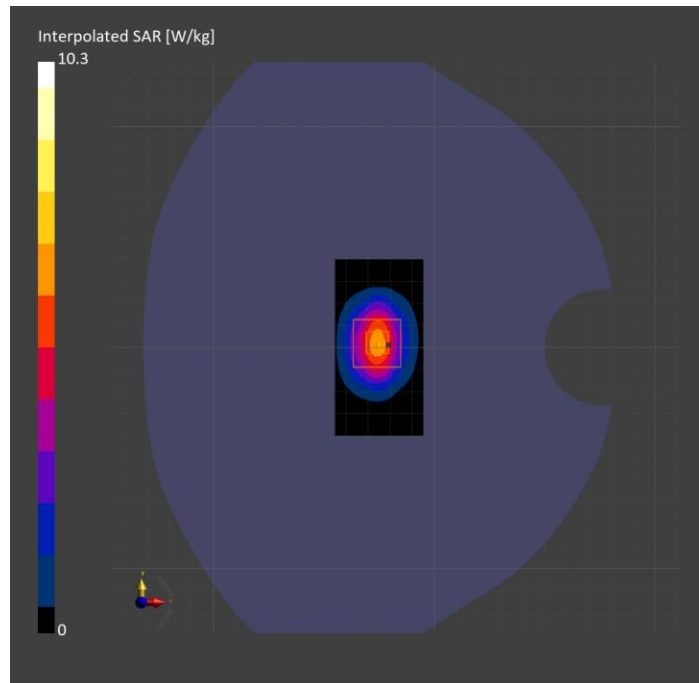
Probe Calibration Date	EX3DV4 - SN7779 2024-05-10	Phantom	Twin-SAM V8.0 (30deg probe tilt)
DAE Calibration Date	DAE4 Sn1439 2024-04-24	TSL Type	HBBL-600-10000
Software Version	16.2.4.2524		

Scans Setup

	Area Scan	Zoom Scan
Grid Extents [mm]	40.0 x 80.0	30.0 x 30.0 x 30.0
Grid Steps [mm]	10.0 x 10.0	5.0 x 5.0 x 1.5
Sensor Surface [mm]	3.0	1.4
Graded Grid	N/A	Yes
M2/M1 [%]		81.5
Dist 3dB Peak [mm]		9.0

Measurement Results

	Area Scan	Zoom Scan
psSAR1g [W/Kg]	5.11	5.19
psSAR10g [W/Kg]	2.37	2.46
Power Drift [dB]	N/A	0.01



System Performance Check Report for D5GHzV2 - SN1003

Exposure Conditions

Frequency [MHz] Channel Number	5750.000 0	TSL Permittivity	34.9
Group UID	CW 0--	TSL Conductivity [S/m]	5.09
Conversion Factor	5.2	Phantom Section TSL	Flat HSL

Hardware Setup

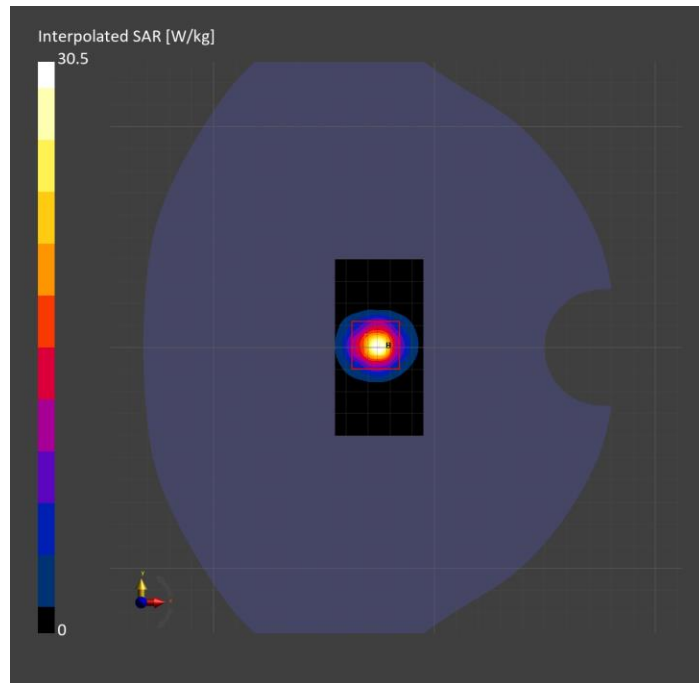
Probe Calibration Date	EX3DV4 - SN3902 2024-03-12	Phantom	Twin-SAM V5.0 (30deg probe tilt)
DAE Calibration Date	DAE4 Sn1799 2023-04-04	TSL Type	HBBL-600-10000
Software Version	16.2.4.2524		

Scans Setup

	Area Scan	Zoom Scan
Grid Extents [mm]	40.0 x 80.0	22.0 x 22.0 x 22.0
Grid Steps [mm]	10.0 x 10.0	4.0 x 4.0 x 1.4
Sensor Surface [mm]	3.0	1.4
Graded Grid	N/A	Yes
M2/M1 [%]		61.9
Dist 3dB Peak [mm]		7.2

Measurement Results

	Area Scan	Zoom Scan
psSAR1g [W/Kg]	6.81	7.35
psSAR10g [W/Kg]	1.96	2.11
Power Drift [dB]	-0.04	-0.02



System Performance Check Report for D1640V2 - SN324

Exposure Conditions

Frequency [MHz] Channel Number	1640.000 0	TSL Permittivity	42.8
Group UID	CW 0--	TSL Conductivity [S/m]	1.26
Conversion Factor	8.51	Phantom Section TSL	Flat HSL

Hardware Setup

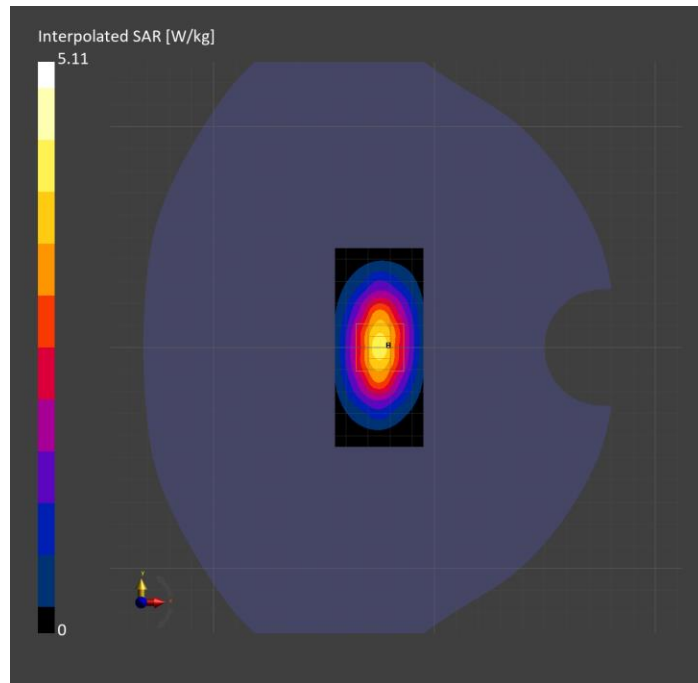
Probe Calibration Date	EX3DV4 - SN3989 2024-01-09	Phantom	Twin-SAM V8.0 (30deg probe tilt)
DAE Calibration Date	DAE4 Sn1433 2024-02-08	TSL Type	HBBL-600-10000
Software Version	16.2.4.2524		

Scans Setup

	Area Scan	Zoom Scan
Grid Extents [mm]	40.0 x 90.0	30.0 x 30.0 x 30.0
Grid Steps [mm]	10.0 x 15.0	6.0 x 6.0 x 1.5
Sensor Surface [mm]	3.0	1.4
Graded Grid	N/A	Yes
M2/M1 [%]		89.9
Dist 3dB Peak [mm]		10.8

Measurement Results

	Area Scan	Zoom Scan
psSAR1g [W/Kg]	3.34	3.29
psSAR10g [W/Kg]	1.81	1.85
Power Drift [dB]	-0.01	0.01



System Performance Check Report for D2450V2 - SN748

Exposure Conditions

Frequency [MHz] Channel Number	2450.000 0	TSL Permittivity	40.5
Group UID	CW 0--	TSL Conductivity [S/m]	1.80
Conversion Factor	7.66	Phantom Section TSL	Flat HSL

Hardware Setup

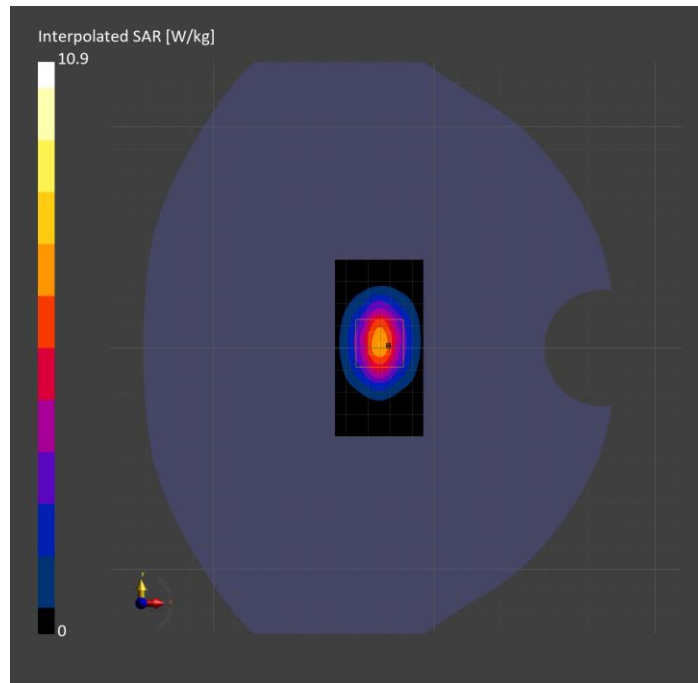
Probe Calibration Date	EX3DV4 - SN7709 2023-11-30	Phantom	Twin-SAM V8.0 (30deg probe tilt)
DAE Calibration Date	DAE4 Sn1714 2023-11-22	TSL Type	HBBL-600-10000
Software Version	16.2.4.2524		

Scans Setup

	Area Scan	Zoom Scan
Grid Extents [mm]	40.0 x 80.0	30.0 x 30.0 x 30.0
Grid Steps [mm]	10.0 x 10.0	5.0 x 5.0 x 1.5
Sensor Surface [mm]	3.0	1.4
Graded Grid	N/A	Yes
M2/M1 [%]		81.4
Dist 3dB Peak [mm]		9.0

Measurement Results

	Area Scan	Zoom Scan
psSAR1g [W/Kg]	5.45	5.47
psSAR10g [W/Kg]	2.50	2.60
Power Drift [dB]	N/A	0.03



System Performance Check Report for D6.5GHzV2 - SN1033

Exposure Conditions

Frequency [MHz] Channel Number	6500.000 0	TSL Permittivity	33.7
Group UID	CW 0--	TSL Conductivity [S/m]	6.03
Conversion Factor	5.24	Phantom Section TSL	Flat HSL

Hardware Setup

Probe Calibration Date	EX3DV4 - SN7498 2024-03-12	Phantom	Twin-SAM V8.0 (30deg probe tilt)
DAE Calibration Date	DAE4 Sn1796 2024-05-02	TSL Type	HBBL-600-10000
Software Version	16.2.4.2524		

Scans Setup

	Area Scan	Zoom Scan
Grid Extents [mm]	51.0 x 85.0	22.0 x 22.0 x 22.0
Grid Steps [mm]	8.5 x 8.5	3.4 x 3.4 x 1.4
Sensor Surface [mm]	3.0	1.4
Graded Grid	N/A	Yes
M2/M1 [%]		51.9
Dist 3dB Peak [mm]		4.8

Measurement Results

	Area Scan	Zoom Scan	APD
psSAR1g [W/Kg]	21.4	25.1	N/A
psSAR8g [W/Kg]	5.19	5.65	N/A
psSAR10g [W/Kg]	4.32	4.63	N/A
psAPD (4.0cm ² , sq.) [W/m ²]	N/A	N/A	113
Power Drift [dB]	0.03	0.04	N/A

