

PCS 1900: GPRS-FDD (TDMA, GMSK, TN 0-1), CHEEK

Exposure Conditions

Band	PCS 1900	TSL Permittivity	40.0
Frequency [MHz] Channel Number	1880.000 661	TSL Conductivity [S/m]	1.44
Group UID	GSM 10024-DAC	Phantom Section TSL	RightHead HSL
Conversion Factor	7.67	Test Distance [mm]	0.00

Hardware Setup

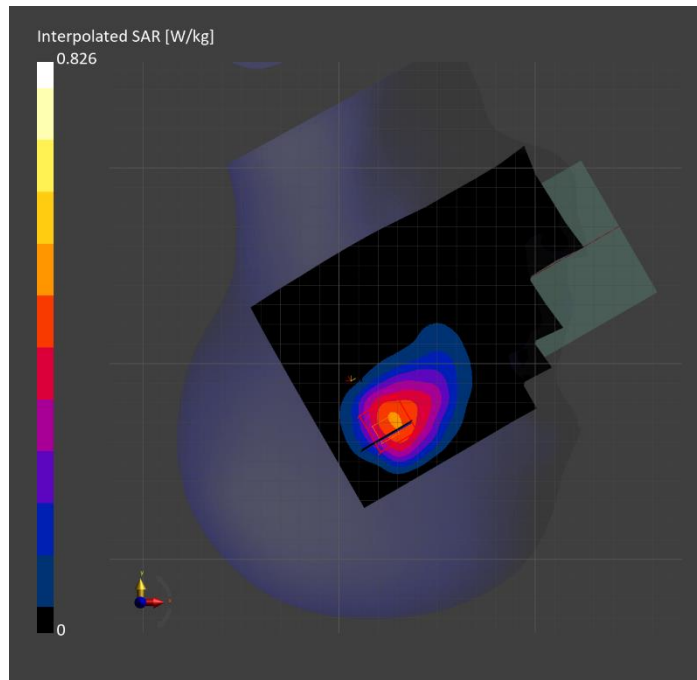
Probe Calibration Date	EX3DV4 - SN3749 2024-01-11	Phantom	Twin-SAM V8.0 (30deg probe tilt)
DAE Calibration Date	DAE4 Sn1674 2024-05-13	TSL Type	HBBL-600-10000
Software Version	16.2.4.2524		

Scan Setup

	Area Scan	Zoom Scan
Grid Extents [mm]	120.0 x 210.0	30.0 x 30.0 x 30.0
Grid Steps [mm]	15.0 x 15.0	6.0 x 6.0 x 1.5
Sensor Surface [mm]	3.0	1.4
Graded Grid	N/A	Yes
M2/M1 [%]		74.6
Dist 3dB Peak [mm]		8.6
Peak SAR [W/kg] SAR Peak Location [mm]	N/A	0.826 [25.2, -337.6, -174.1]

Measurement Results

	Area Scan	Zoom Scan
psSAR1g [W/Kg]	0.406	0.367
psSAR10g [W/Kg]	0.240	0.207
Power Drift [dB]	0.02	-0.03



Band 4: UMTS-FDD (WCDMA), TILT

Exposure Conditions

Band	Band 4	TSL Permittivity	40.3
Frequency [MHz] Channel Number	1712.400 1312	TSL Conductivity [S/m]	1.35
Group UID	WCDMA 10011-CAC	Phantom Section TSL	RightHead HSL
Conversion Factor	7.83	Test Distance [mm]	0.00

Hardware Setup

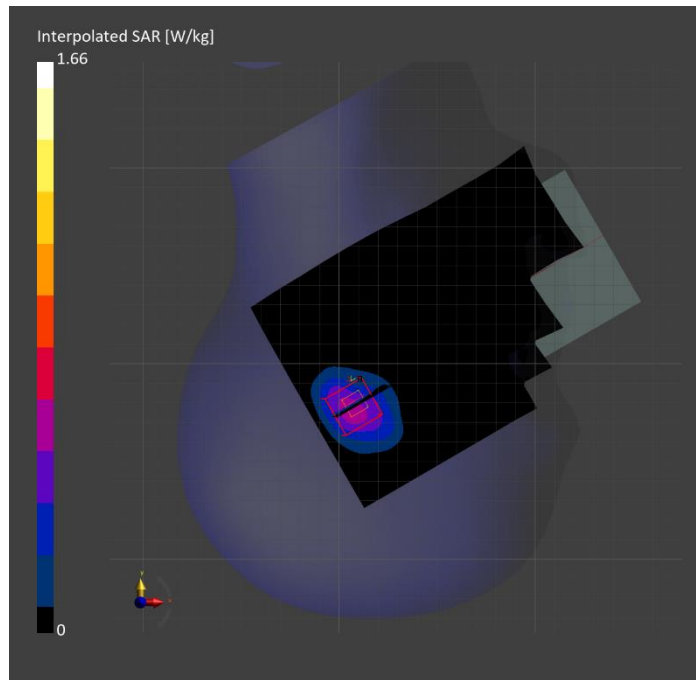
Probe Calibration Date	EX3DV4 - SN3749 2024-01-11	Phantom	Twin-SAM V8.0 (30deg probe tilt)
DAE Calibration Date	DAE4 Sn1674 2024-05-13	TSL Type	HBBL-600-10000
Software Version	16.2.4.2524		

Scan Setup

	Area Scan	Zoom Scan
Grid Extents [mm]	120.0 x 210.0	30.0 x 30.0 x 30.0
Grid Steps [mm]	15.0 x 15.0	4.6 x 4.6 x 1.4
Sensor Surface [mm]	3.0	1.4
Graded Grid	N/A	Yes
M2/M1 [%]		79.6
Dist 3dB Peak [mm]		7.1
Peak SAR [W/kg] SAR Peak Location [mm]	N/A	1.66 [7.2, -319.2, -173.5]

Measurement Results

	Area Scan	Zoom Scan
psSAR1g [W/Kg]	0.515	0.741
psSAR10g [W/Kg]	0.284	0.338
Power Drift [dB]	-0.34	-0.03



Band 30: LTE-FDD (SC-FDMA, 1 RB, 10 MHz, QPSK) RBPosition:Mid AntennaCfg:SISO, CHEEK

Exposure Conditions

Band	Band 30	TSL Permittivity	38.2
Frequency [MHz] Channel Number	2310.000 27710	TSL Conductivity [S/m]	1.71
Group UID	LTE-FDD 10175-CAH	Phantom Section TSL	RightHead HSL
Conversion Factor	7.98	Test Distance [mm]	0.00

Hardware Setup

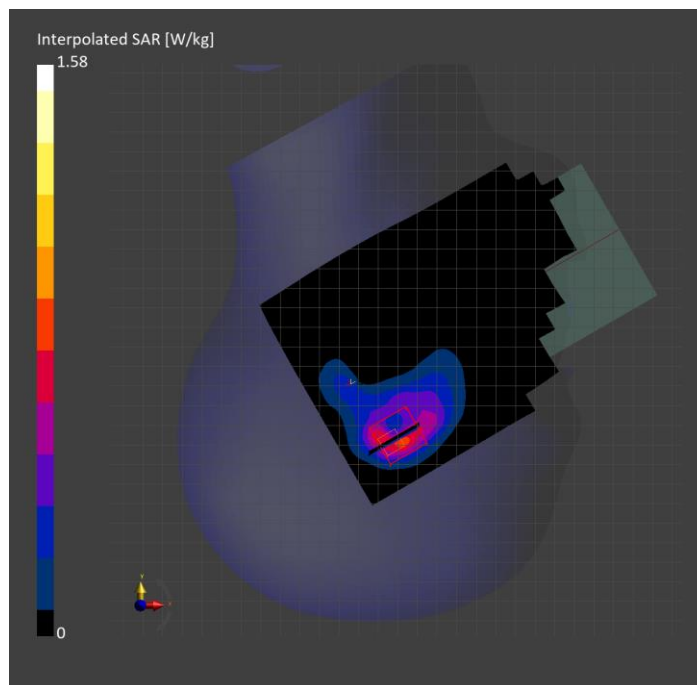
Probe Calibration Date	EX3DV4 - SN3991 2023-10-12	Phantom	Twin-SAM V5.0 (30deg probe tilt)
DAE Calibration Date	DAE4 Sn1380 2024-02-09	TSL Type	HBBL-600-10000
Software Version	16.2.4.2524		

Scan Setup

	Area Scan	Zoom Scan
Grid Extents [mm]	120.0 x 200.0	30.0 x 30.0 x 30.0
Grid Steps [mm]	10.0 x 10.0	5.0 x 5.0 x 1.5
Sensor Surface [mm]	3.0	1.4
Graded Grid	N/A	Yes
M2/M1 [%]		74.6
Dist 3dB Peak [mm]		5.7
Peak SAR [W/kg] SAR Peak Location [mm]	N/A	1.58 [28.0, -339.4, -174.0]

Measurement Results

	Area Scan	Zoom Scan
psSAR1g [W/Kg]	0.594	0.638
psSAR10g [W/Kg]	0.301	0.287
Power Drift [dB]	N/A	-0.01



Band n48: 5G NR (DFT-s-OFDM, 50% RB, 40 MHz, QPSK, 30 kHz) RBPosition:Mid AntennaCfg:SISO, CHEEK

Exposure Conditions

Band	Band n48	TSL Permittivity	38.5
Frequency [MHz] Channel Number	3643.345 642890	TSL Conductivity [S/m]	2.89
Group UID	5G NR FR1 TDD 10913-AAD	Phantom Section TSL	LeftHead HSL
Conversion Factor	6.14	Test Distance [mm]	0.00

Hardware Setup

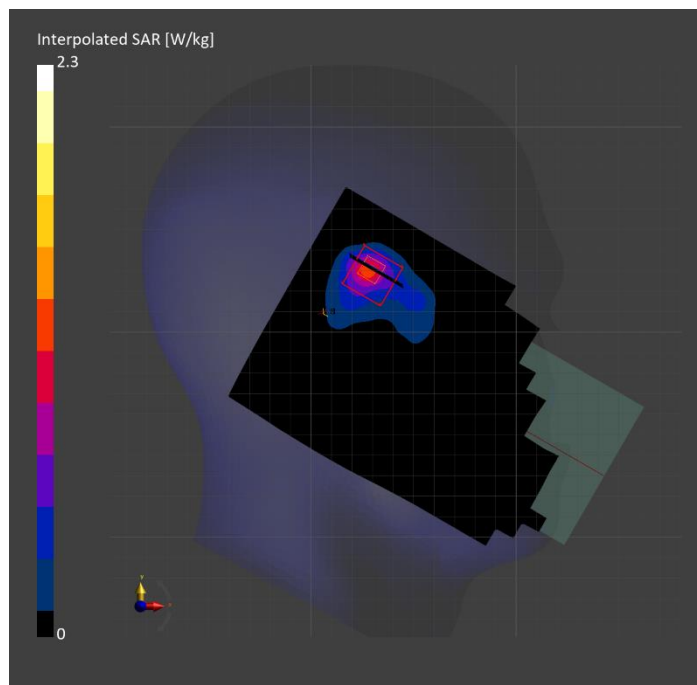
Probe Calibration Date	EX3DV4 - SN7463 2024-04-15	Phantom	Twin-SAM V5.0 (30deg probe tilt)
DAE Calibration Date	DAE4 Sn1548 2024-02-08	TSL Type	HBBL-600-10000
Software Version	16.2.4.2524		

Scan Setup

	Area Scan	Zoom Scan
Grid Extents [mm]	120.0 x 200.0	28.0 x 28.0 x 28.0
Grid Steps [mm]	10.0 x 10.0	5.0 x 5.0 x 1.4
Sensor Surface [mm]	3.0	1.4
Graded Grid	N/A	Yes
M2/M1 [%]		73.1
Dist 3dB Peak [mm]		6.4
Peak SAR [W/kg] SAR Peak Location [mm]	N/A	2.30 [31.7, 331.6, -174.7]

Measurement Results

	Area Scan	Zoom Scan
psSAR1g [W/Kg]	0.859	0.850
psSAR10g [W/Kg]	0.326	0.322
Power Drift [dB]	N/A	0.05



WLAN 2.4GHz: IEEE 802.11b WiFi 2.4 GHz (DSSS, 1 Mbps, 99pc duty cycle), CHEEK

Exposure Conditions

Band	WLAN 2.4GHz	TSL Permittivity	39.5
Frequency [MHz] Channel Number	2462.000 11	TSL Conductivity [S/m]	1.74
Group UID	WLAN 10415-AAA	Phantom Section TSL	LeftHead HSL
Conversion Factor	7.18	Test Distance [mm]	0.00

Hardware Setup

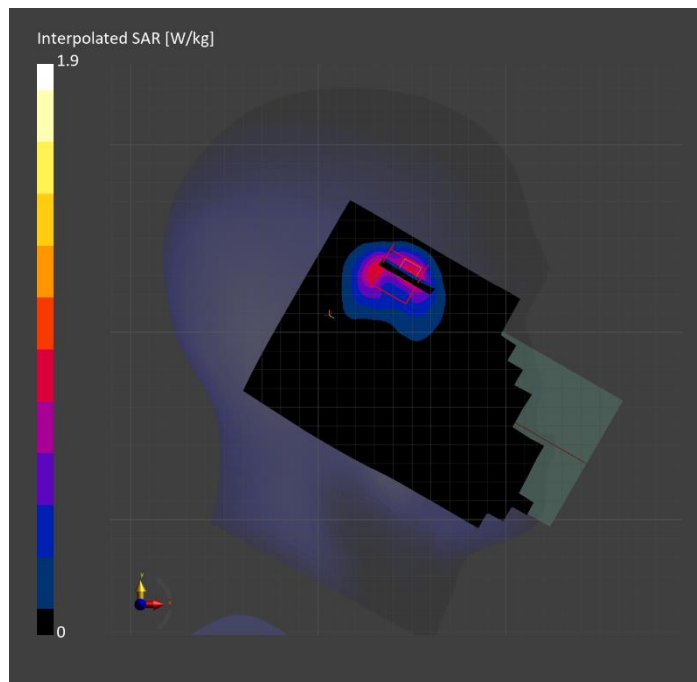
Probe Calibration Date	EX3DV4 - SN3772 2024-02-07	Phantom	Twin-SAM V8.0 (30deg probe tilt)
DAE Calibration Date	DAE4 Sn1258 2024-03-12	TSL Type	HBBL-600-10000
Software Version	16.2.4.2524		

Scan Setup

	Area Scan	Zoom Scan
Grid Extents [mm]	120.0 x 200.0	30.0 x 30.0 x 30.0
Grid Steps [mm]	10.0 x 10.0	4.6 x 4.6 x 1.5
Sensor Surface [mm]	3.0	1.4
Graded Grid	N/A	Yes
M2/M1 [%]		75.3
Dist 3dB Peak [mm]		5.6
Peak SAR [W/kg] SAR Peak Location [mm]	N/A	1.90 [47.9, 333.7, -173.6]

Measurement Results

	Area Scan	Zoom Scan
psSAR1g [W/Kg]	0.680	0.772
psSAR10g [W/Kg]	0.341	0.337
Power Drift [dB]	-0.01	-0.01



WLAN 5GHz: IEEE 802.11ac WiFi (80MHz, MCS0, 99pc duty cycle), TILT

Exposure Conditions

Band	WLAN 5GHz	TSL Permittivity	33.9
Frequency [MHz] Channel Number	5775.000 155	TSL Conductivity [S/m]	5.16
Group UID	WLAN 10544-AAD	Phantom Section TSL	LeftHead HSL
Conversion Factor	4.63	Test Distance [mm]	0.00

Hardware Setup

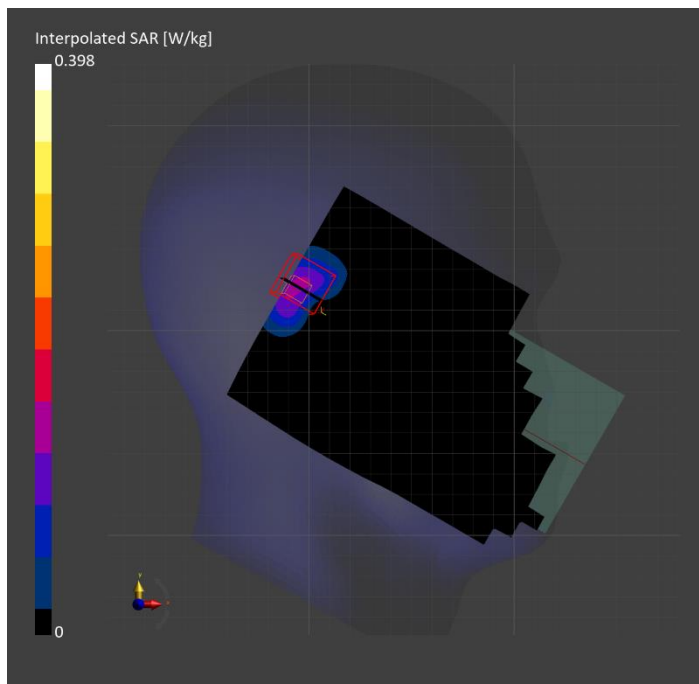
Probe Calibration Date	EX3DV4 - SN3772 2024-02-07	Phantom	Twin-SAM V8.0 (30deg probe tilt)
DAE Calibration Date	DAE4 Sn1258 2024-03-12	TSL Type	HBBL-600-10000
Software Version	16.2.4.2524		

Scan Setup

	Area Scan	Zoom Scan
Grid Extents [mm]	120.0 x 200.0	22.0 x 22.0 x 22.0
Grid Steps [mm]	10.0 x 10.0	4.0 x 4.0 x 1.4
Sensor Surface [mm]	3.0	1.4
Graded Grid	N/A	Yes
M2/M1 [%]		61.5
Dist 3dB Peak [mm]		9.4
Peak SAR [W/kg] SAR Peak Location [mm]	N/A	0.398 [-5.6, 320.2, -171.7]

Measurement Results

	Area Scan	Zoom Scan
psSAR1g [W/Kg]	0.107	0.109
psSAR10g [W/Kg]	0.036	0.038
Power Drift [dB]	-0.12	0.08



U-NII-7: IEEE 802.11ax (160MHz, MCS0, 99pc duty cycle), TILT

Exposure Conditions

Band	U-NII-7	TSL Permittivity	33.2
Frequency [MHz] Channel Number	6665.000 143	TSL Conductivity [S/m]	6.59
Group UID	WLAN 10755-AAC	Phantom Section TSL	RightHead HSL
Conversion Factor	5.1	Test Distance [mm]	0.00

Hardware Setup

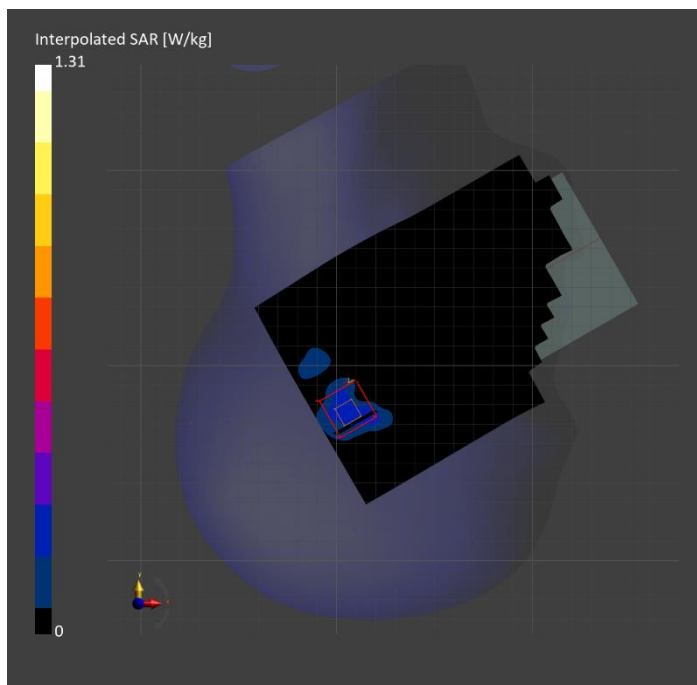
Probe Calibration Date	EX3DV4 - SN7810 2024-05-08	Phantom	Twin-SAM V8.0 (30deg probe tilt)
DAE Calibration Date	DAE4 Sn1787 2024-05-02	TSL Type	HBBL-600-10000
Software Version	16.2.4.2524		

Scan Setup

	Area Scan	Zoom Scan 1	Zoom Scan 2
Grid Extents [mm]	119.0 x 204.0	22.0 x 22.0 x 22.0	22.0 x 22.0 x 22.0
Grid Steps [mm]	8.5 x 8.5	3.4 x 3.4 x 1.4	3.4 x 3.4 x 1.4
Sensor Surface [mm]	3.0	1.4	1.4
Graded Grid	N/A	Yes	Yes
M2/M1 [%]		47.4	47.4
Dist 3dB Peak [mm]		6.4	6.1
Peak SAR [W/kg] SAR Peak Location [mm]	N/A	1.25 [14.3, -325.6, -174.2]	1.31 [14.1, -325.2, -174.2]

Measurement Results

	Area Scan	Zoom Scan 1	Zoom Scan 2	APD 1	APD 2
psSAR1g [W/Kg]	0.247	0.256	0.263	N/A	N/A
psSAR8g [W/Kg]	0.100	0.104	0.107	N/A	N/A
psSAR10g [W/Kg]	0.090	0.092	0.095	N/A	N/A
psAPD (4.0cm ² , sq.) [W/m ²]	N/A	N/A	N/A	2.08	2.15
Power Drift [dB]	N/A	-0.36	-0.50	N/A	N/A



U-NII-8: IEEE 802.11ax (160MHz, MCS0, 99pc duty cycle), FRONT

Exposure Conditions

Band	U-NII-8	Phantom Section	5G
Frequency [MHz] Channel Number	6985.0 207	Conversion Factor	1.0
Group UID	WLAN, 10755-AAC	Position Test Distance [mm]	FRONT 2.00

Hardware Setup

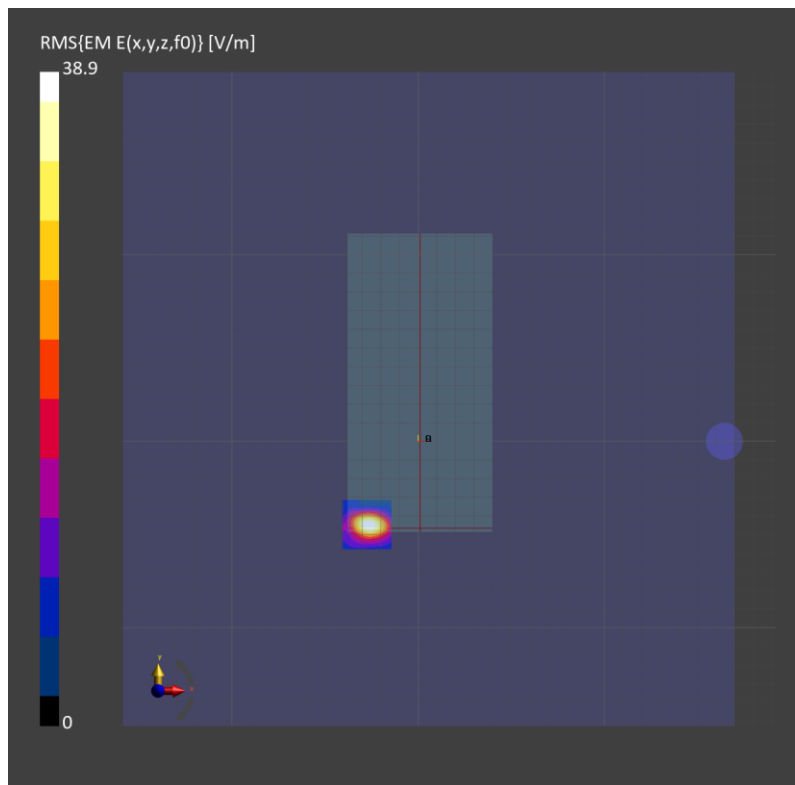
Probe Calibration Date	EUmmWV4 - SN9619_F1-55GHz 2024-03-08	Phantom	mmWave xxxx
DAE Calibration Date	DAE4 Sn1472 2024-01-16	Medium	Air -
Software Version	3.2.0.1840		

Scan Setup

Scan Type	5G Scan	Grid Extents [mm]	25.0 x 25.0
Grid Steps [lambda]	0.041 x 0.041	Sensor Surface [mm]	2.0

Measurement Results

Avg. Area [cm ²]	4.00
psPDn+ [W/m ²]	0.551
psPDtot+ [W/m ²]	0.646
psPDmod+ [W/m ²]	0.960
E _{max} [V/m]	38.9
Power Drift [dB]	0.01



FR2 Band n260: CW, EDGE LEFT

Exposure Conditions

Band	Custom Band	Phantom Section	5G
Frequency [MHz] Channel Number	39950.0 2277500	Conversion Factor	1.0
Group UID	CW, 0--	Position Test Distance [mm]	EDGE LEFT 2.00

Hardware Setup

Probe Calibration Date	EUmmWV4 - SN9589_F1-55GHz 2023-09-05	Phantom	mmWave xxxx
DAE Calibration Date	DAE4ip Sn1621 2024-04-12	Medium	Air -
Software Version	3.2.0.1840		

Scan Setup

Scan Type	5G Scan	Grid Extents [mm]	25.0 x 25.0
Grid Steps [lambda]	0.25 x 0.25	Sensor Surface [mm]	2.0

Measurement Results

Avg. Area [cm ²]	4.00
psPDn+ [W/m ²]	0.029
psPDtot+ [W/m ²]	0.036
psPDmod+ [W/m ²]	0.047
E _{max} [V/m]	7.11
H _{max} [A/m]	0.022
Power Drift [dB]	-0.22

