

# PCS 1900 RF Interference Potential Test Report

## Hardware Setup

Probe | Calibration Date EF3DV3 - SN4028 | September 04, 2023  
DAE | Calibration Date DAE4 Sn1546 | March 11, 2024  
Software Version 1.2.0.1713

## Communication Systems

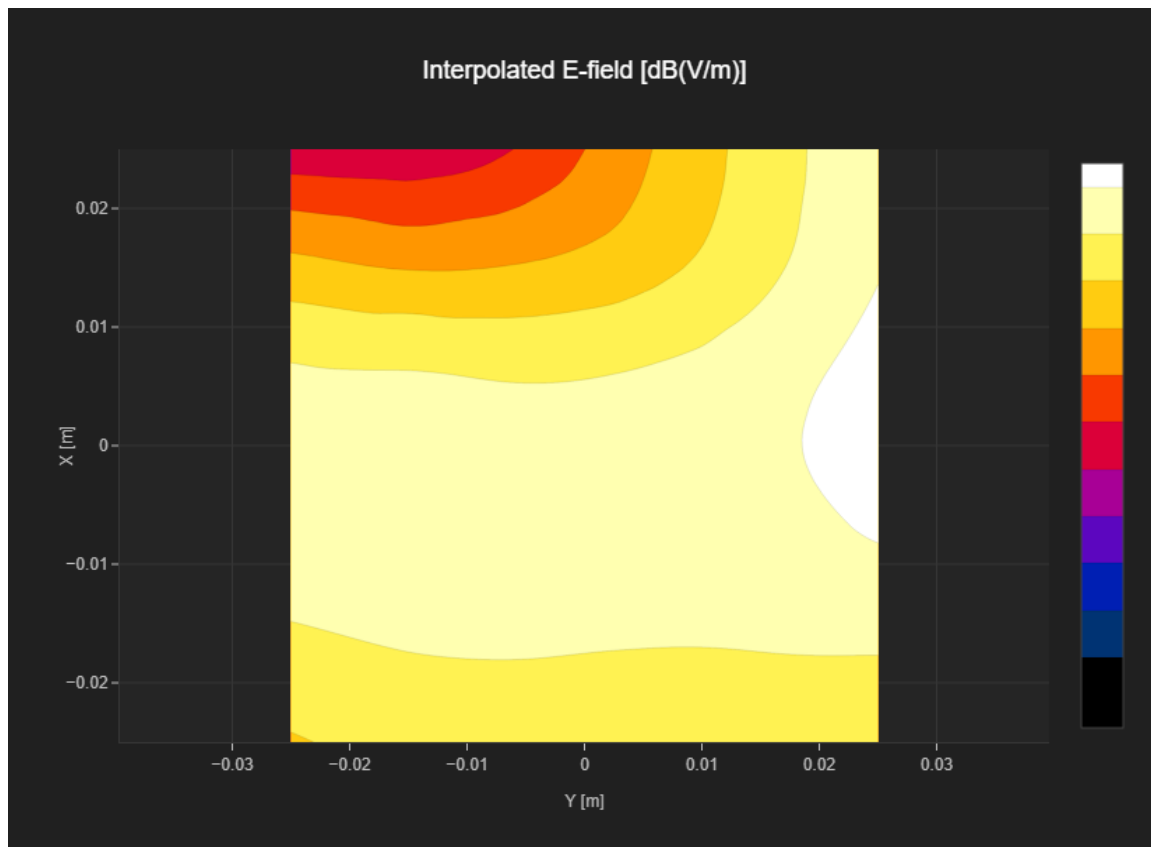
MIF 3.8  
Channel | Frequency [MHz] 512 | 1850.2  
Communication Systems' Name GPRS-FDD (TDMA, GMSK, TN 0)

## Grid Settings

Extent X [mm]	50.0	Step X [mm]	10.0
Extent Y [mm]	50.0	Step Y [mm]	10.0
Distance [mm]	15.0		

## Results

E <sub>max</sub> [dBV/m]	<b>24.46</b>	E <sub>avg 50x50 Max</sub> [dBV/m]	<b>21.73</b>
Drift [dB]	<b>-0.15</b>	RFail [dBV/m]	<b>25.53</b>



# PCS 1900 RF Interference Potential Test Report

## Hardware Setup

Probe | Calibration Date EF3DV3 - SN4028 | September 04, 2023  
DAE | Calibration Date DAE4 Sn1546 | March 11, 2024  
Software Version 1.2.0.1713

## Communication Systems

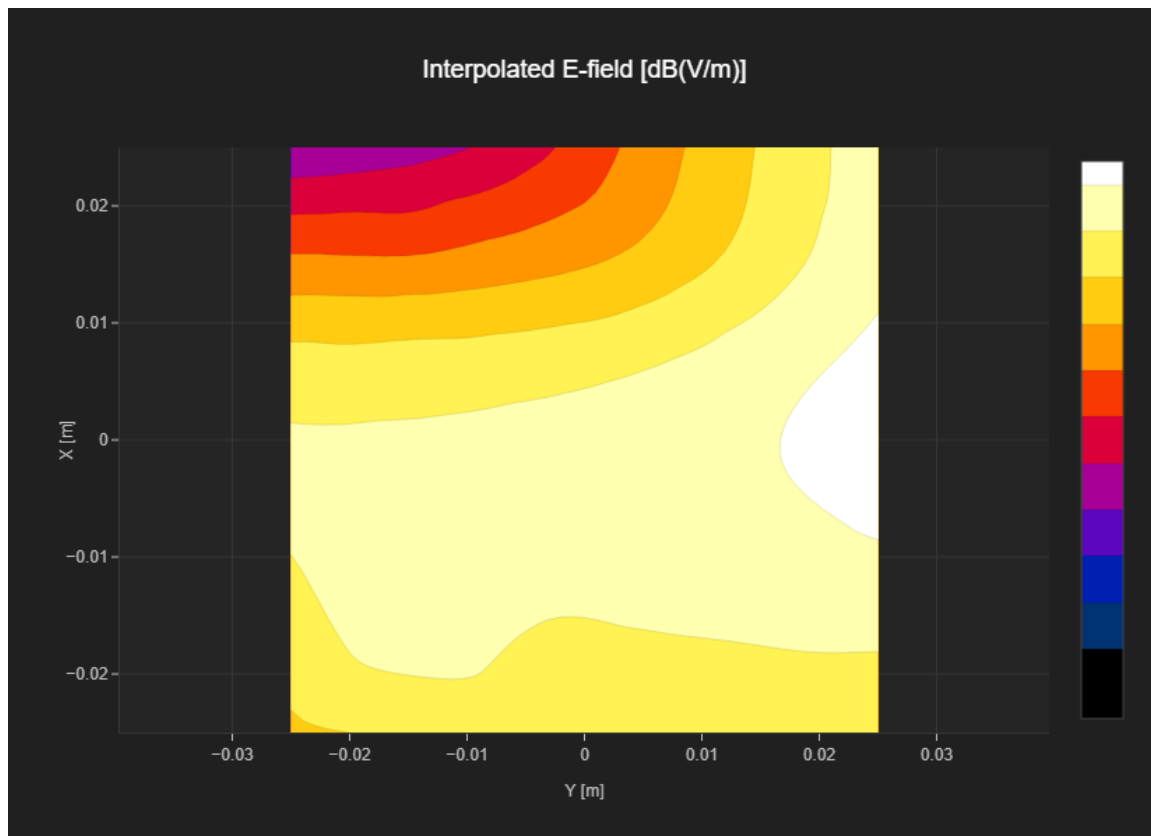
MIF 3.8  
Channel | Frequency [MHz] 661 | 1880.0  
Communication Systems' Name GPRS-FDD (TDMA, GMSK, TN 0)

## Grid Settings

Extent X [mm]	50.0	Step X [mm]	10.0
Extent Y [mm]	50.0	Step Y [mm]	10.0
Distance [mm]	15.0		

## Results

E <sub>max</sub> [dBV/m]	<b>23.14</b>	E <sub>avg 50x50 Max</sub> [dBV/m]	<b>21.54</b>
Drift [dB]	<b>-0.16</b>	RFail [dBV/m]	<b>25.34</b>



# PCS 1900 RF Interference Potential Test Report

## Hardware Setup

Probe | Calibration Date EF3DV3 - SN4028 | September 04, 2023  
DAE | Calibration Date DAE4 Sn1546 | March 11, 2024  
Software Version 1.2.0.1713

## Communication Systems

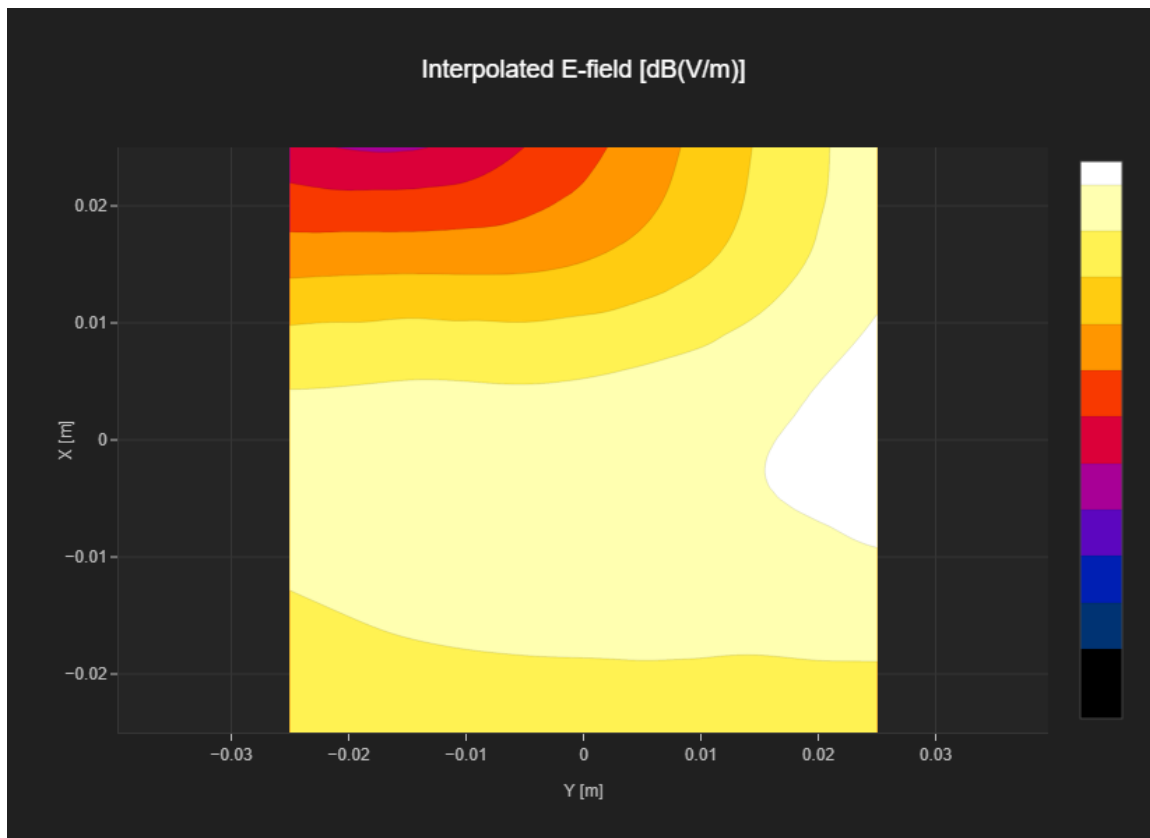
MIF 3.8  
Channel | Frequency [MHz] 810 | 1909.8  
Communication Systems' Name GPRS-FDD (TDMA, GMSK, TN 0)

## Grid Settings

Extent X [mm]	50.0	Step X [mm]	10.0
Extent Y [mm]	50.0	Step Y [mm]	10.0
Distance [mm]	15.0		

## Results

E <sub>max</sub> [dBV/m]	<b>24.75</b>	E <sub>avg 50x50 Max</sub> [dBV/m]	<b>21.93</b>
Drift [dB]	<b>0.06</b>	RFail [dBV/m]	<b>25.73</b>



# PCS 1900 RF Interference Potential Test Report

## Hardware Setup

Probe | Calibration Date EF3DV3 - SN4028 | September 04, 2023  
DAE | Calibration Date DAE4 Sn1546 | March 11, 2024  
Software Version 1.2.0.1713

## Communication Systems

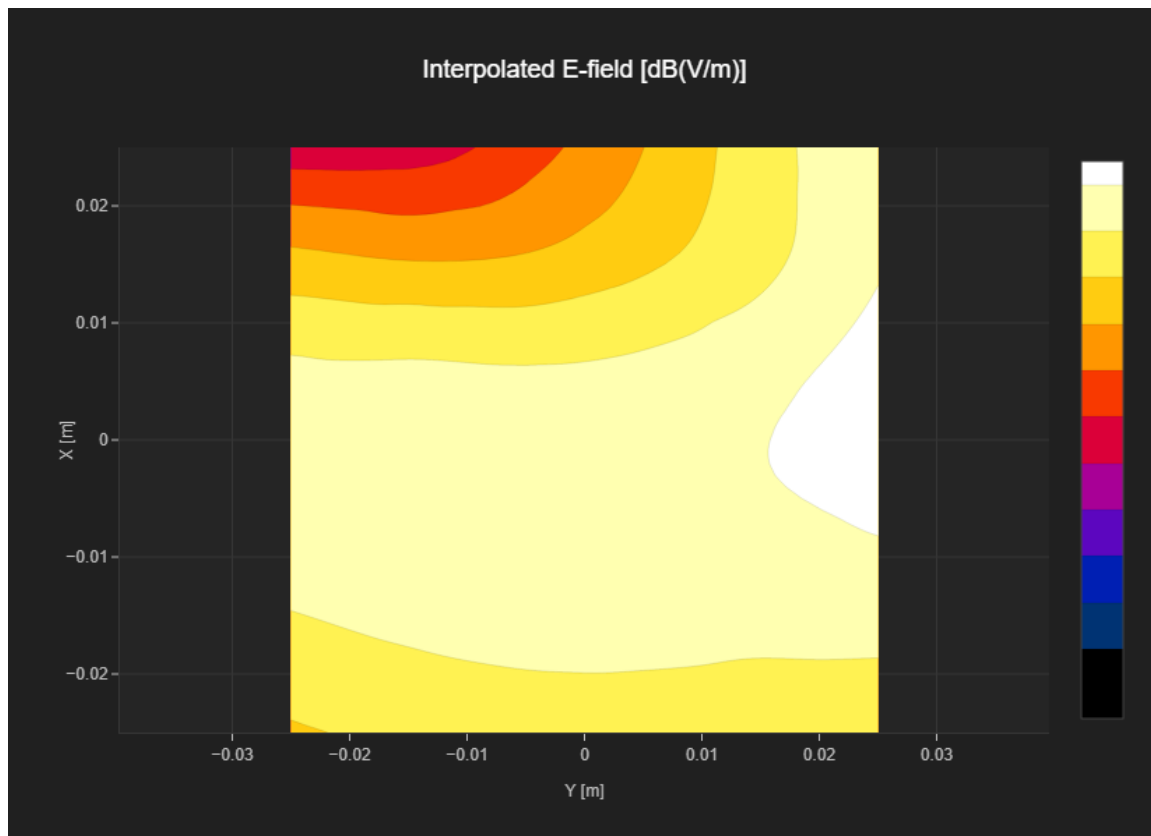
MIF 1.15  
Channel | Frequency [MHz] 512 | 1850.2  
Communication Systems' Name GPRS-FDD (TDMA, GMSK, TN 0-1)

## Grid Settings

Extent X [mm]	50.0	Step X [mm]	10.0
Extent Y [mm]	50.0	Step Y [mm]	10.0
Distance [mm]	15.0		

## Results

E <sub>max</sub> [dBV/m]	<b>24.44</b>	E <sub>avg 50x50 Max</sub> [dBV/m]	<b>23.02</b>
Drift [dB]	<b>-0.14</b>	RFail [dBV/m]	<b>24.17</b>



# PCS 1900 RF Interference Potential Test Report

## Hardware Setup

Probe | Calibration Date EF3DV3 - SN4028 | September 04, 2023  
DAE | Calibration Date DAE4 Sn1546 | March 11, 2024  
Software Version 1.2.0.1713

## Communication Systems

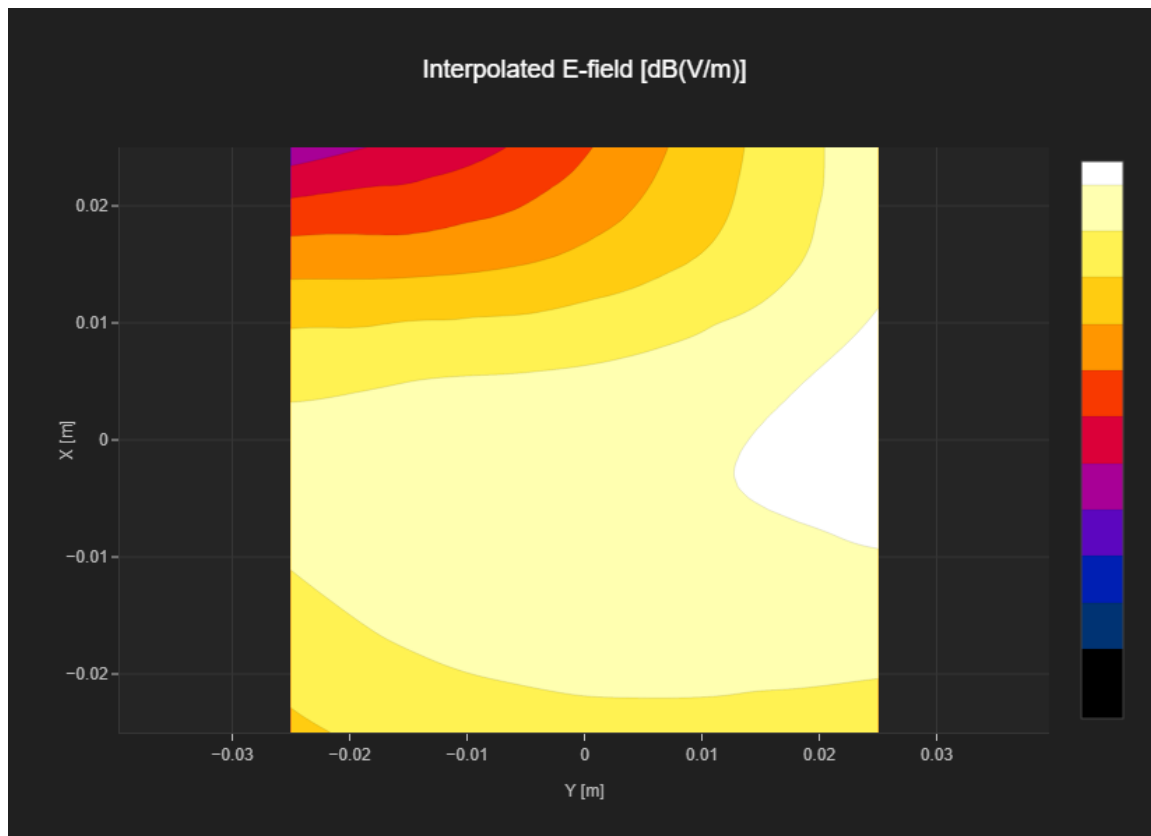
MIF 1.15  
Channel | Frequency [MHz] 661 | 1880.0  
Communication Systems' Name GPRS-FDD (TDMA, GMSK, TN 0-1)

## Grid Settings

Extent X [mm]	50.0	Step X [mm]	10.0
Extent Y [mm]	50.0	Step Y [mm]	10.0
Distance [mm]	15.0		

## Results

E <sub>max</sub> [dBV/m]	<b>26.11</b>	E <sub>avg 50x50 Max</sub> [dBV/m]	<b>23.47</b>
Drift [dB]	<b>-0.07</b>	R <sub>Fail</sub> [dBV/m]	<b>24.62</b>



# PCS 1900 RF Interference Potential Test Report

## Hardware Setup

Probe | Calibration Date EF3DV3 - SN4028 | September 04, 2023  
DAE | Calibration Date DAE4 Sn1546 | March 11, 2024  
Software Version 1.2.0.1713

## Communication Systems

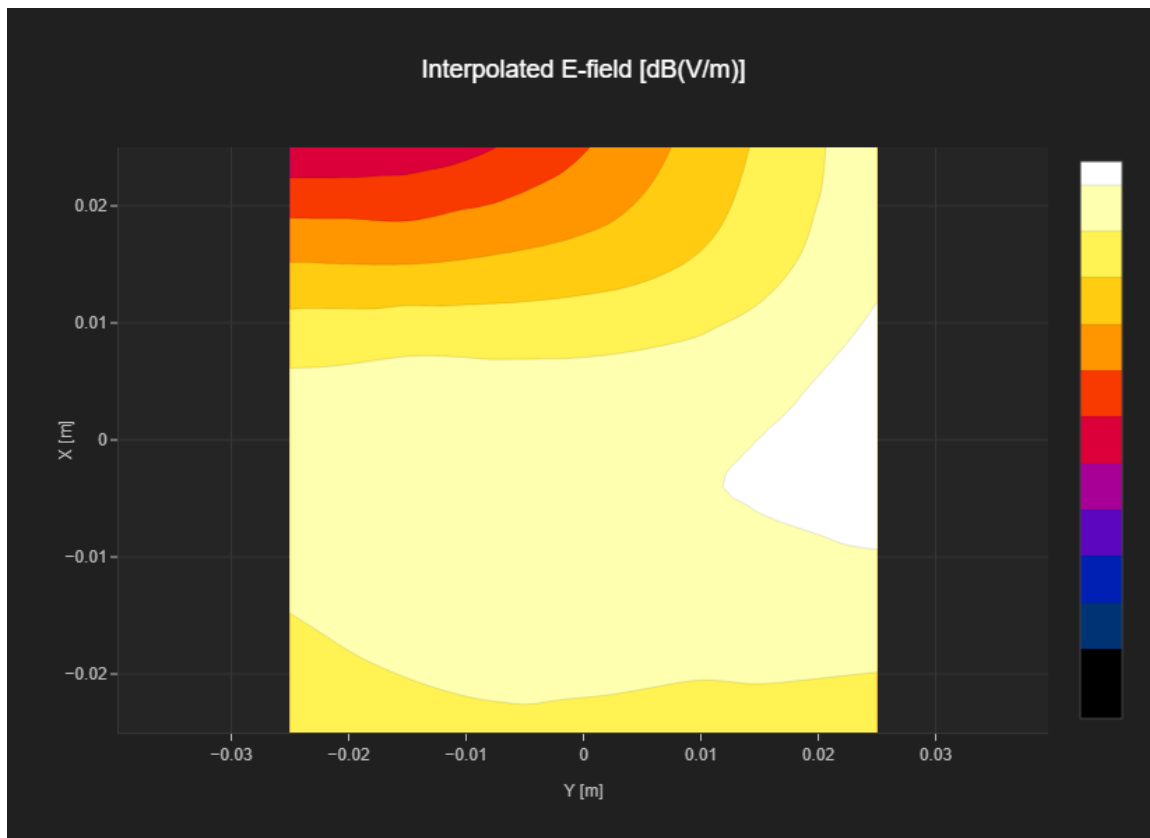
MIF 1.15  
Channel | Frequency [MHz] 810 | 1909.8  
Communication Systems' Name GPRS-FDD (TDMA, GMSK, TN 0-1)

## Grid Settings

Extent X [mm]	50.0	Step X [mm]	10.0
Extent Y [mm]	50.0	Step Y [mm]	10.0
Distance [mm]	15.0		

## Results

E <sub>max</sub> [dBV/m]	<b>25.65</b>	E <sub>avg 50x50 Max</sub> [dBV/m]	<b>24.06</b>
Drift [dB]	<b>-0.03</b>	RFail [dBV/m]	<b>25.21</b>



# PCS 1900 RF Interference Potential Test Report

## Hardware Setup

Probe | Calibration Date EF3DV3 - SN4028 | September 04, 2023  
DAE | Calibration Date DAE4 Sn1546 | March 11, 2024  
Software Version 1.2.0.1713

## Communication Systems

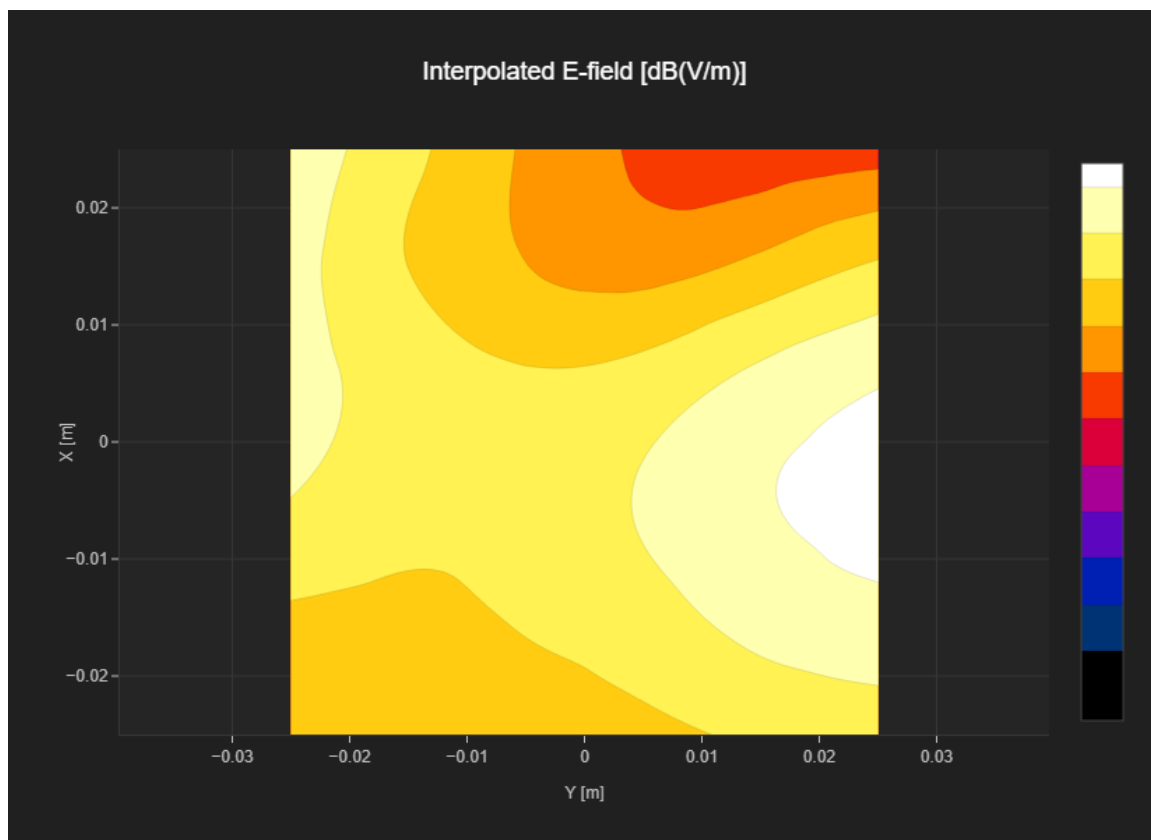
MIF 3.8  
Channel | Frequency [MHz] 512 | 1850.2  
Communication Systems' Name GPRS-FDD (TDMA, GMSK, TN 0)

## Grid Settings

Extent X [mm]	50.0	Step X [mm]	10.0
Extent Y [mm]	50.0	Step Y [mm]	10.0
Distance [mm]	15.0		

## Results

E <sub>max</sub> [dBV/m]	<b>24.77</b>	E <sub>avg 50x50 Max</sub> [dBV/m]	<b>21.14</b>
Drift [dB]	<b>-0.1</b>	RFail [dBV/m]	<b>24.94</b>



# PCS 1900 RF Interference Potential Test Report

## Hardware Setup

Probe | Calibration Date EF3DV3 - SN4028 | September 04, 2023  
DAE | Calibration Date DAE4 Sn1546 | March 11, 2024  
Software Version 1.2.0.1713

## Communication Systems

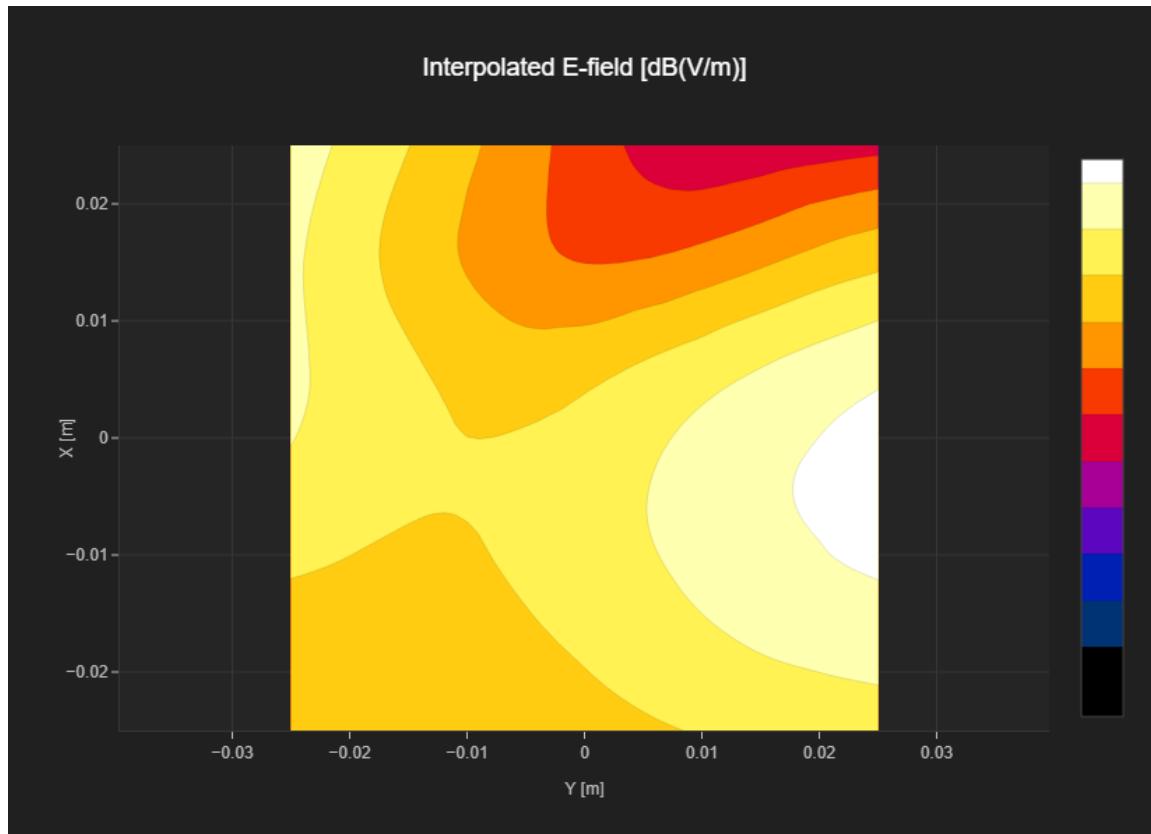
MIF 3.8  
Channel | Frequency [MHz] 661 | 1880.0  
Communication Systems' Name GPRS-FDD (TDMA, GMSK, TN 0)

## Grid Settings

Extent X [mm]	50.0	Step X [mm]	10.0
Extent Y [mm]	50.0	Step Y [mm]	10.0
Distance [mm]	15.0		

## Results

E <sub>max</sub> [dBV/m]	<b>25.73</b>	E <sub>avg 50x50 Max</sub> [dBV/m]	<b>21.73</b>
Drift [dB]	<b>-0.13</b>	RFail [dBV/m]	<b>25.53</b>





# PCS 1900 RF Interference Potential Test Report

## Hardware Setup

Probe | Calibration Date EF3DV3 - SN4028 | September 04, 2023  
DAE | Calibration Date DAE4 Sn1546 | March 11, 2024  
Software Version 1.2.0.1713

## Communication Systems

MIF 3.8  
Channel | Frequency [MHz] 810 | 1909.8  
Communication Systems' Name GPRS-FDD (TDMA, GMSK, TN 0)

## Grid Settings

Extent X [mm]	50.0	Step X [mm]	10.0
Extent Y [mm]	50.0	Step Y [mm]	10.0
Distance [mm]	15.0		

## Results

E <sub>max</sub> [dBV/m]	<b>25.47</b>	E <sub>avg 50x50 Max</sub> [dBV/m]	<b>21.47</b>
Drift [dB]	<b>0.12</b>	RFail [dBV/m]	<b>25.27</b>

