

Band n53: 5G NR (DFT-s-OFDM, 50% RB, 10 MHz, QPSK, 30 kHz) RBPosition:Mid AntennaCfg:SISO, BACK

Exposure Conditions

Band	Band n53	TSL Permittivity	38.5
Frequency [MHz] Channel Number	2488.800 497760	TSL Conductivity [S/m]	1.83
Group UID	5G NR FR1 TDD 10908-AAC	Phantom Section TSL	Flat HSL
Conversion Factor	7.3	Test Distance [mm]	5.00

Hardware Setup

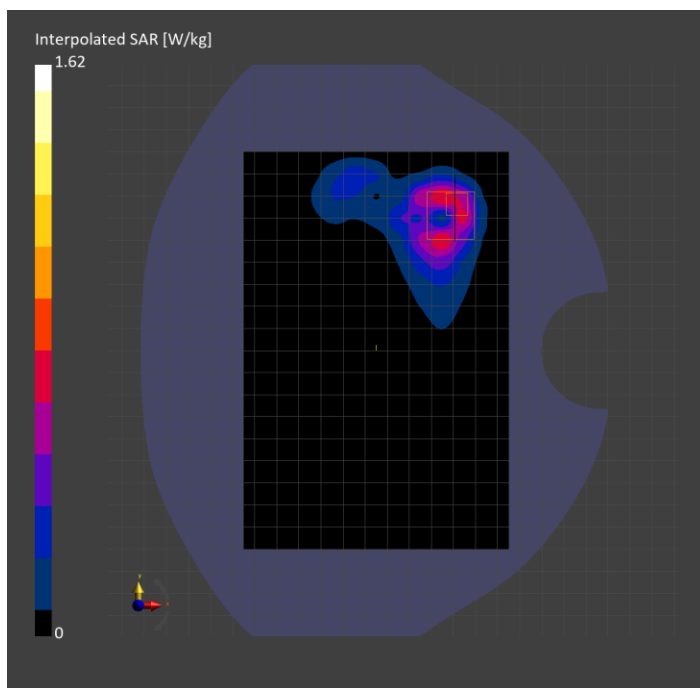
Probe Calibration Date	EX3DV4 - SN7850 2023-10-27	Phantom	Twin-SAM V8.0 (30deg probe tilt)
DAE Calibration Date	DAE4 Sn1673 2024-05-13	TSL Type	HBBL-600-10000
Software Version	16.2.4.2524		

Scan Setup

	Area Scan	Zoom Scan
Grid Extents [mm]	120.0 x 180.0	30.0 x 30.0 x 30.0
Grid Steps [mm]	10.0 x 10.0	3.8 x 3.8 x 1.4
Sensor Surface [mm]	3.0	1.4
Graded Grid	N/A	Yes
M2/M1 [%]		78.1
Dist 3dB Peak [mm]		5.5
Peak SAR [W/kg] SAR Peak Location [mm]	N/A	1.62 [10.8, 66.2, -207.0]

Measurement Results

	Area Scan	Zoom Scan
psSAR1g [W/Kg]	0.562	0.661
psSAR10g [W/Kg]	0.285	0.281
Power Drift [dB]	N/A	N/A



Custom Band: CW, BACK

Exposure Conditions

Band	Custom Band	TSL Permittivity	40.3
Frequency [MHz] Channel Number	1610.100 1610100	TSL Conductivity [S/m]	1.23
Group UID	CW 0--	Phantom Section TSL	Flat HSL
Conversion Factor	8.51	Test Distance [mm]	0.00

Hardware Setup

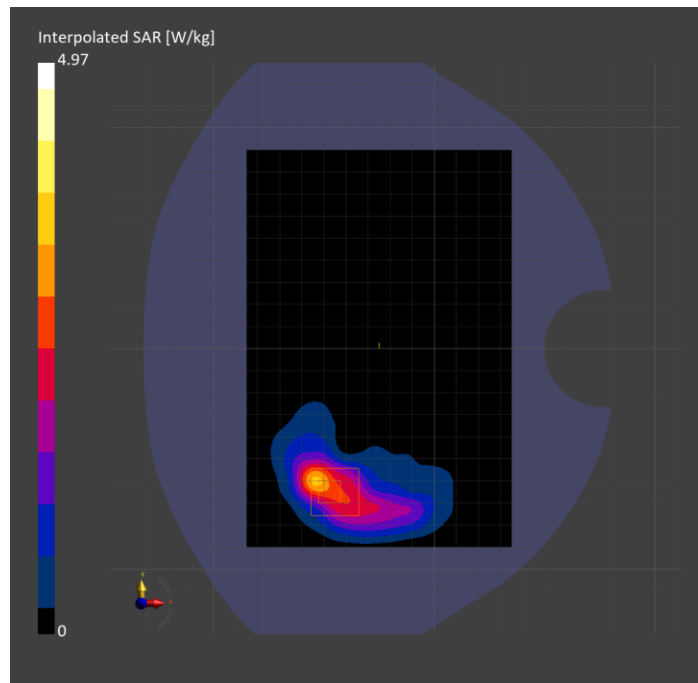
Probe Calibration Date	EX3DV4 - SN3989 2024-01-09	Phantom	Twin-SAM V8.0 (30deg probe tilt)
DAE Calibration Date	DAE4 Sn1433 2024-02-08	TSL Type	HBBL-600-10000
Software Version	16.2.4.2524		

Scan Setup

	Area Scan	Zoom Scan
Grid Extents [mm]	120.0 x 180.0	30.0 x 30.0 x 30.0
Grid Steps [mm]	15.0 x 15.0	6.0 x 6.0 x 1.5
Sensor Surface [mm]	3.0	1.4
Graded Grid	N/A	Yes
M2/M1 [%]		87.9
Dist 3dB Peak [mm]		7.3
Peak SAR [W/kg] SAR Peak Location [mm]	N/A	4.97 [-50.3, -64.4, -207.0]

Measurement Results

	Area Scan	Zoom Scan
psSAR1g [W/Kg]	2.50	2.85
psSAR10g [W/Kg]	1.31	1.39
Power Drift [dB]	0.01	0.01



Band n30: 5G NR (DFT-s-OFDM, 1 RB, 10 MHz, QPSK, 15 kHz) RBPosition:High AntennaCfg:SISO, CHEEK

Exposure Conditions

Band	Band n30	TSL Permittivity	39.6
Frequency [MHz] Channel Number	2310.000 462000	TSL Conductivity [S/m]	1.70
Group UID	5G NR FR1 FDD 10929-AAD	Phantom Section TSL	LeftHead HSL
Conversion Factor	7.39	Test Distance [mm]	0.00

Hardware Setup

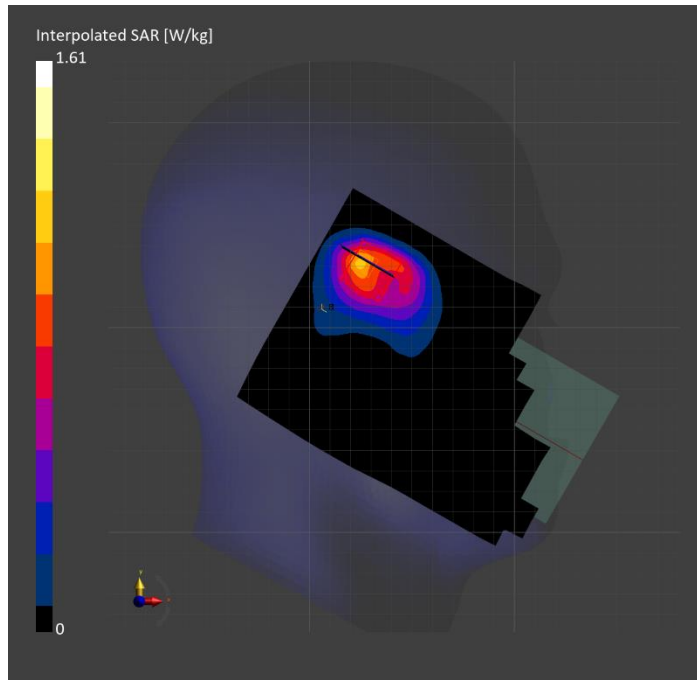
Probe Calibration Date	EX3DV4 - SN3929 2024-03-14	Phantom	Twin-SAM V5.0 (30deg probe tilt)
DAE Calibration Date	DAE4 Sn1546 2024-03-11	TSL Type	HBBL-600-10000
Software Version	16.2.4.2524		

Scan Setup

	Area Scan	Zoom Scan
Grid Extents [mm]	120.0 x 180.0	30.0 x 30.0 x 30.0
Grid Steps [mm]	10.0 x 10.0	5.0 x 5.0 x 1.5
Sensor Surface [mm]	3.0	1.4
Graded Grid	N/A	Yes
M2/M1 [%]		84.0
Dist 3dB Peak [mm]		7.8
Peak SAR [W/kg] SAR Peak Location [mm]	N/A	1.61 [25.0, 335.3, -174.3]

Measurement Results

	Area Scan	Zoom Scan
psSAR1g [W/Kg]	0.839	0.841
psSAR10g [W/Kg]	0.443	0.437
Power Drift [dB]	N/A	-0.02



Band n48: 5G NR (DFT-s-OFDM, 1 RB, 40 MHz, QPSK, 30 kHz) RBPosition:High AntennaCfg:SISO, BACK

Exposure Conditions

Band	Band n48	TSL Permittivity	38.2
Frequency [MHz] Channel Number	3643.345 642890	TSL Conductivity [S/m]	2.89
Group UID	5G NR FR1 TDD 10903-AAD	Phantom Section TSL	Flat HSL
Conversion Factor	6.88	Test Distance [mm]	5.00

Hardware Setup

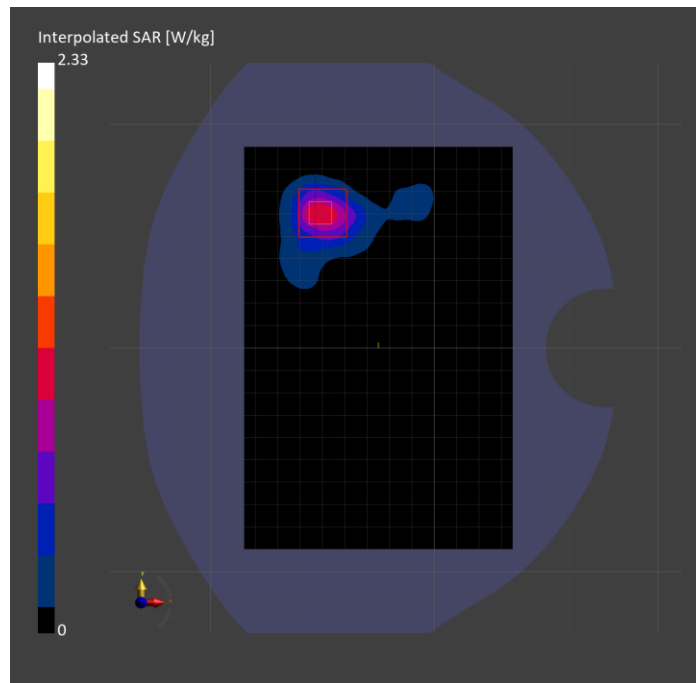
Probe Calibration Date	EX3DV4 - SN7335 2024-01-09	Phantom	Twin-SAM V8.0 (30deg probe tilt)
DAE Calibration Date	DAE4ip Sn1619 2024-04-11	TSL Type	HBBL-600-10000
Software Version	16.2.4.2524		

Scan Setup

	Area Scan	Zoom Scan
Grid Extents [mm]	120.0 x 180.0	28.0 x 28.0 x 28.0
Grid Steps [mm]	10.0 x 10.0	5.0 x 5.0 x 1.4
Sensor Surface [mm]	3.0	1.4
Graded Grid	N/A	Yes
M2/M1 [%]		70.2
Dist 3dB Peak [mm]		7.0
Peak SAR [W/kg] SAR Peak Location [mm]	N/A	2.33 [-53.0, 63.5, -207.0]

Measurement Results

	Area Scan	Zoom Scan
psSAR1g [W/Kg]	0.831	0.865
psSAR10g [W/Kg]	0.343	0.348
Power Drift [dB]	N/A	-0.00



WLAN 2.4GHz: IEEE 802.11b WiFi 2.4 GHz (DSSS, 1 Mbps, 99pc duty cycle), EDGE RIGHT

Exposure Conditions

Band	WLAN 2.4GHz	TSL Permittivity	41.0
Frequency [MHz] Channel Number	2462.000 11	TSL Conductivity [S/m]	1.80
Group UID	WLAN 10415-AAA	Phantom Section TSL	Flat HSL
Conversion Factor	7.18	Test Distance [mm]	5.00

Hardware Setup

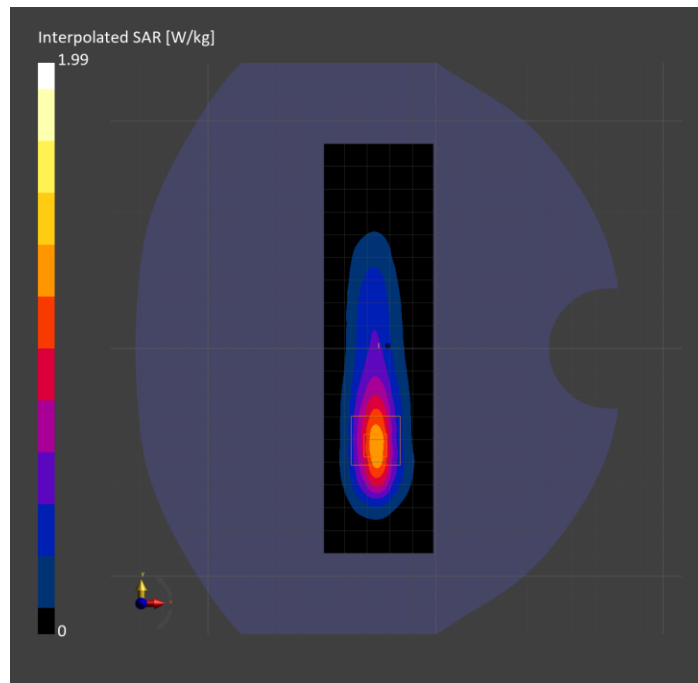
Probe Calibration Date	EX3DV4 - SN3772 2024-02-07	Phantom	Twin-SAM V8.0 (30deg probe tilt)
DAE Calibration Date	DAE4 Sn1258 2024-03-12	TSL Type	HBBL-600-10000
Software Version	16.2.4.2524		

Scan Setup

	Area Scan	Zoom Scan
Grid Extents [mm]	48.0 x 180.0	30.0 x 30.0 x 30.0
Grid Steps [mm]	8.0 x 10.0	5.0 x 5.0 x 1.5
Sensor Surface [mm]	3.0	1.4
Graded Grid	N/A	Yes
M2/M1 [%]		80.7
Dist 3dB Peak [mm]		8.1
Peak SAR [W/kg] SAR Peak Location [mm]	N/A	1.99 [-26.3, -41.5, -207.0]

Measurement Results

	Area Scan	Zoom Scan
psSAR1g [W/Kg]	0.971	0.977
psSAR10g [W/Kg]	0.442	0.454
Power Drift [dB]	N/A	-0.01



WLAN 5GHz: IEEE 802.11n (HT Greenfield, 13.5 Mbps, BPSK), BACK

Exposure Conditions

Band	WLAN 5GHz	TSL Permittivity	36.9
Frequency [MHz] Channel Number	5230.000 46	TSL Conductivity [S/m]	4.77
Group UID	WLAN 10114-CAE	Phantom Section TSL	Flat HSL
Conversion Factor	5.75	Test Distance [mm]	5.00

Hardware Setup

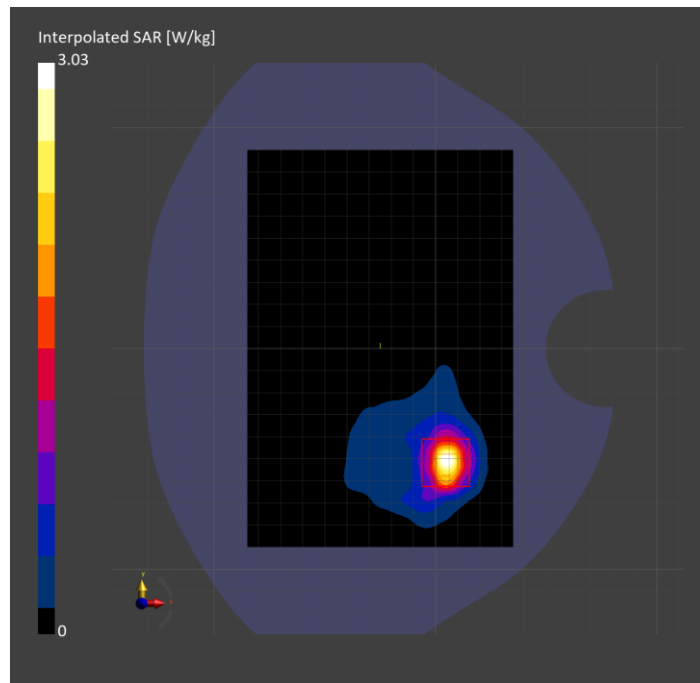
Probe Calibration Date	EX3DV4 - SN7810 2024-05-08	Phantom	Twin-SAM V8.0 (30deg probe tilt)
DAE Calibration Date	DAE4 Sn1787 2024-05-02	TSL Type	HBBL-600-10000
Software Version	16.2.4.2524		

Scan Setup

	Area Scan	Zoom Scan
Grid Extents [mm]	120.0 x 180.0	22.0 x 22.0 x 22.0
Grid Steps [mm]	10.0 x 10.0	4.0 x 4.0 x 1.4
Sensor Surface [mm]	3.0	1.4
Graded Grid	N/A	Yes
M2/M1 [%]		62.2
Dist 3dB Peak [mm]		6.6
Peak SAR [W/kg] SAR Peak Location [mm]	N/A	3.03 [6.1, -52.8, -207.0]

Measurement Results

	Area Scan	Zoom Scan
psSAR1g [W/Kg]	0.660	0.756
psSAR10g [W/Kg]	0.212	0.228
Power Drift [dB]	N/A	-0.06



U-NII-6: IEEE 802.11ax (160MHz, MCS0, 99pc duty cycle), BACK

Exposure Conditions

Band	U-NII-6	TSL Permittivity	34.7
Frequency [MHz] Channel Number	6505.000 111	TSL Conductivity [S/m]	6.25
Group UID	WLAN 10755-AAC	Phantom Section TSL	Flat HSL
Conversion Factor	5.1	Test Distance [mm]	5.00

Hardware Setup

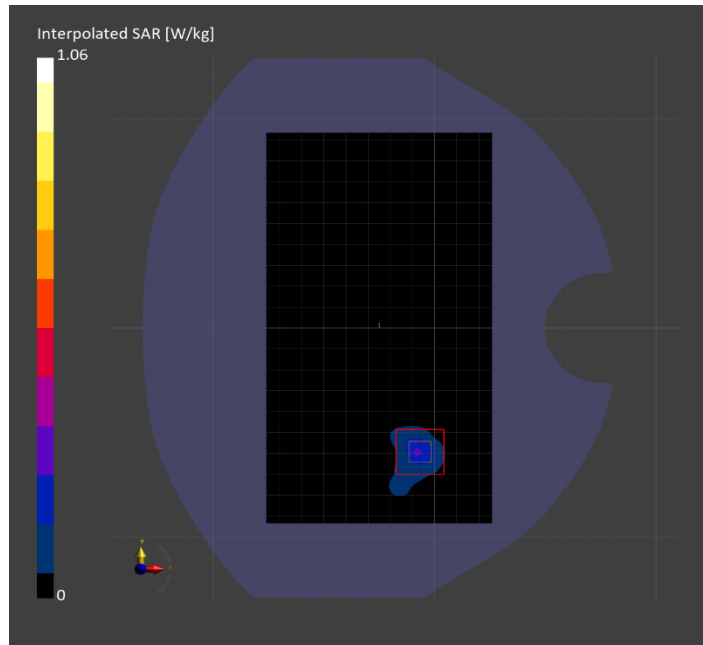
Probe Calibration Date	EX3DV4 - SN7810 2024-05-08	Phantom	Twin-SAM V8.0 (30deg probe tilt)
DAE Calibration Date	DAE4 Sn1787 2024-05-02	TSL Type	HBBL-600-10000
Software Version	16.2.4.2524		

Scan Setup

	Area Scan	Zoom Scan
Grid Extents [mm]	102.0 x 187.0	22.0 x 22.0 x 22.0
Grid Steps [mm]	8.5 x 8.5	3.4 x 3.4 x 1.4
Sensor Surface [mm]	3.0	1.4
Graded Grid	N/A	Yes
M2/M1 [%]		50.5
Dist 3dB Peak [mm]		6.8
Peak SAR [W/kg] SAR Peak Location [mm]	N/A	1.06 [-6.1, -58.4, -207.0]

Measurement Results

	Area Scan	Zoom Scan	APD
psSAR1g [W/Kg]	0.191	0.208	N/A
psSAR8g [W/Kg]	0.068	0.072	N/A
psSAR10g [W/Kg]	0.059	0.062	N/A
psAPD (4.0cm ² , sq.) [W/m ²]	N/A	N/A	1.44
Power Drift [dB]	N/A	0.09	0.09



Custom Band: CW, CHEEK

Exposure Conditions

Band	Custom Band	TSL Permittivity	41.0
Frequency [MHz] Channel Number	2480.000 78	TSL Conductivity [S/m]	1.82
Group UID	CW 10032--	Phantom Section TSL	LeftHead HSL
Conversion Factor	7.18	Test Distance [mm]	0.00

Hardware Setup

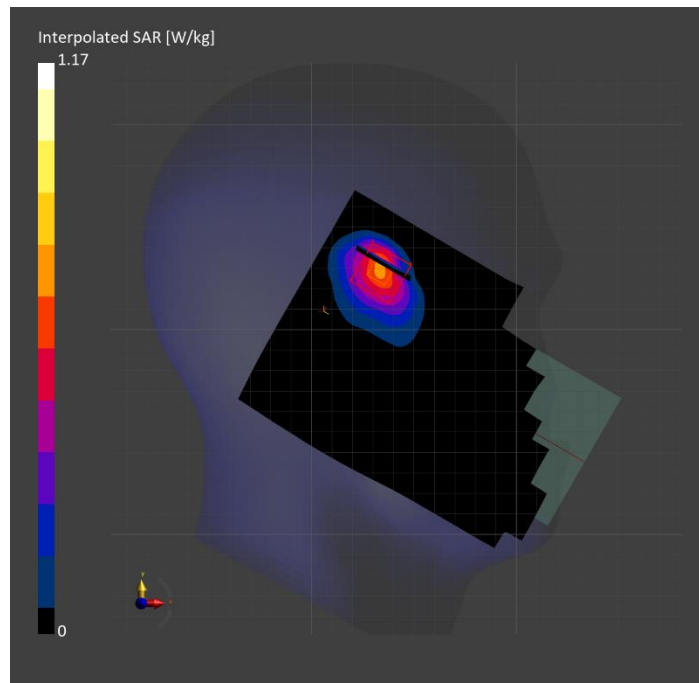
Probe Calibration Date	EX3DV4 - SN3772 2024-02-07	Phantom	Twin-SAM V8.0 (30deg probe tilt)
DAE Calibration Date	DAE4 Sn1258 2024-03-12	TSL Type	HBBL-600-10000
Software Version	16.2.4.2524		

Scan Setup

	Area Scan	Zoom Scan
Grid Extents [mm]	120.0 x 180.0	30.0 x 30.0 x 30.0
Grid Steps [mm]	10.0 x 10.0	4.4 x 4.4 x 1.5
Sensor Surface [mm]	3.0	1.4
Graded Grid	N/A	Yes
M2/M1 [%]		84.0
Dist 3dB Peak [mm]		5.3
Peak SAR [W/kg] SAR Peak Location [mm]	N/A	1.17 [34.4, 335.5, -174.3]

Measurement Results

	Area Scan	Zoom Scan
psSAR1g [W/Kg]	0.551	0.582
psSAR10g [W/Kg]	0.272	0.279
Power Drift [dB]	N/A	0.04



CLA13: CW, BACK

Exposure Conditions

Band	CLA13	TSL Permittivity	54.3
Frequency [MHz] Channel Number	13.000 4	TSL Conductivity [S/m]	0.705
Group UID	CW 0--	Phantom Section TSL	Flat HSL
Conversion Factor	17.98	Test Distance [mm]	0.00

Hardware Setup

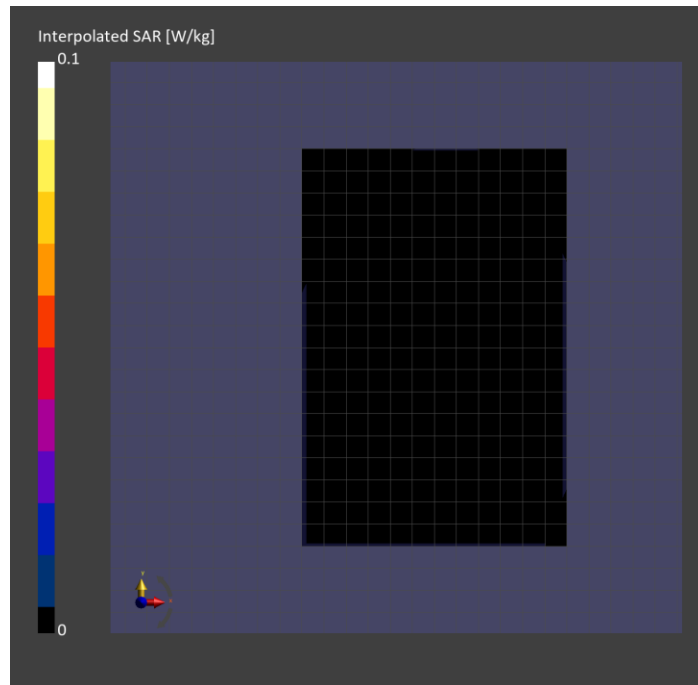
Probe Calibration Date	EX3DV4 - SN3991 2023-10-12	Phantom	ELI V5.0 (20deg probe tilt)
DAE Calibration Date	DAE4 Sn1380 2024-02-09	TSL Type	HBBL-600-10000
Software Version	16.2.4.2524		

Scan Setup

	Area Scan
Grid Extents [mm]	120.0 x 180.0
Grid Steps [mm]	15.0 x 15.0
Sensor Surface [mm]	3.0
Graded Grid	N/A

Measurement Results

	Area Scan
psSAR1g [W/Kg]	0
psSAR10g [W/Kg]	0
Power Drift [dB]	N/A



Band n53: 5G NR (DFT-s-OFDM, 50% RB, 10 MHz, QPSK, 30 kHz) RBPosition:Mid AntennaCfg:SISO, BACK

Exposure Conditions

Band	Band n53	TSL Permittivity	38.5
Frequency [MHz] Channel Number	2488.800 497760	TSL Conductivity [S/m]	1.83
Group UID	5G NR FR1 TDD 10908-AAC	Phantom Section TSL	Flat HSL
Conversion Factor	7.3	Test Distance [mm]	5.00

Hardware Setup

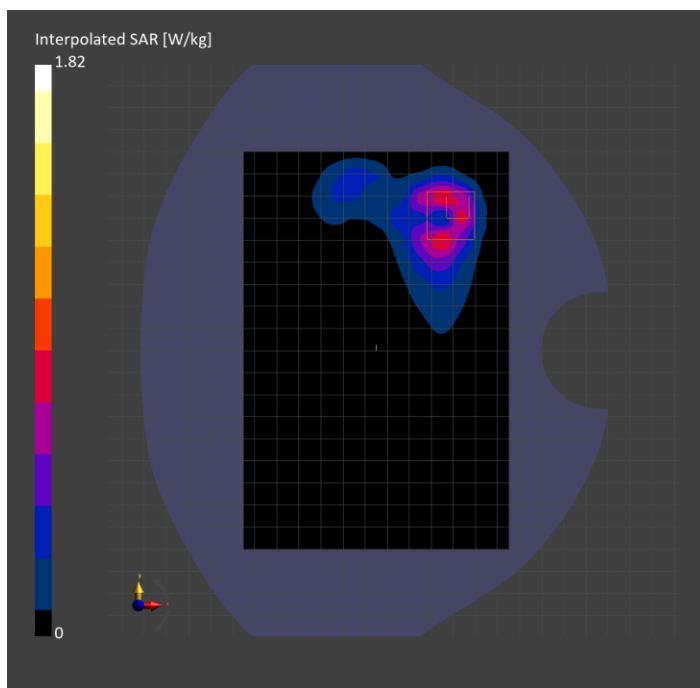
Probe Calibration Date	EX3DV4 - SN7850 2023-10-27	Phantom	Twin-SAM V8.0 (30deg probe tilt)
DAE Calibration Date	DAE4 Sn1673 2024-05-13	TSL Type	HBBL-600-10000
Software Version	16.2.4.2524		

Scan Setup

	Area Scan	Zoom Scan
Grid Extents [mm]	120.0 x 180.0	30.0 x 30.0 x 30.0
Grid Steps [mm]	10.0 x 10.0	3.9 x 3.9 x 1.4
Sensor Surface [mm]	3.0	1.4
Graded Grid	N/A	Yes
M2/M1 [%]		78.0
Dist 3dB Peak [mm]		5.7
Peak SAR [W/kg] SAR Peak Location [mm]	N/A	1.82 [11.2, 65.6, -207.0]

Measurement Results

	Area Scan	Zoom Scan
psSAR1g [W/Kg]	0.641	0.737
psSAR10g [W/Kg]	0.319	0.314
Power Drift [dB]	N/A	-0.00



Custom Band: CW, BACK

Exposure Conditions

Band	Custom Band	TSL Permittivity	40.3
Frequency [MHz] Channel Number	1610.100 1610100	TSL Conductivity [S/m]	1.23
Group UID	CW 0--	Phantom Section TSL	Flat HSL
Conversion Factor	8.51	Test Distance [mm]	0.00

Hardware Setup

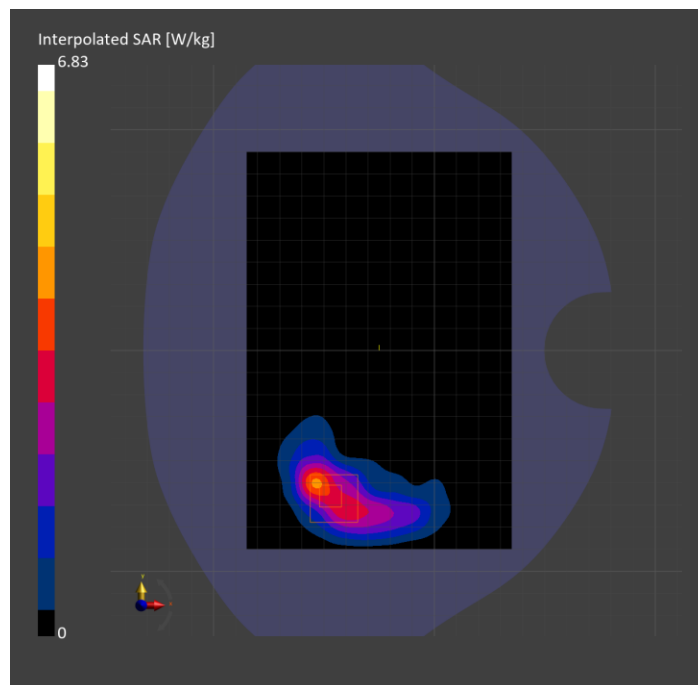
Probe Calibration Date	EX3DV4 - SN3989 2024-01-09	Phantom	Twin-SAM V8.0 (30deg probe tilt)
DAE Calibration Date	DAE4 Sn1433 2024-02-08	TSL Type	HBBL-600-10000
Software Version	16.2.4.2524		

Scan Setup

	Area Scan	Zoom Scan
Grid Extents [mm]	120.0 x 180.0	30.0 x 30.0 x 30.0
Grid Steps [mm]	15.0 x 15.0	6.0 x 6.0 x 1.5
Sensor Surface [mm]	3.0	1.4
Graded Grid	N/A	Yes
M2/M1 [%]		87.1
Dist 3dB Peak [mm]		7.0
Peak SAR [W/kg] SAR Peak Location [mm]	N/A	6.84 [-50.8, -66.6, -207.0]

Measurement Results

	Area Scan	Zoom Scan
psSAR1g [W/Kg]	3.14	3.76
psSAR10g [W/Kg]	1.68	1.80
Power Drift [dB]	0.03	-0.00



Band n30: 5G NR (DFT-s-OFDM, 1 RB, 10 MHz, QPSK, 15 kHz) RBPosition:High AntennaCfg:SISO, CHEEK

Exposure Conditions

Band	Band n30	TSL Permittivity	39.6
Frequency [MHz] Channel Number	2310.000 462000	TSL Conductivity [S/m]	1.70
Group UID	5G NR FR1 FDD 10929-AAD	Phantom Section TSL	LeftHead HSL
Conversion Factor	7.39	Test Distance [mm]	0.00

Hardware Setup

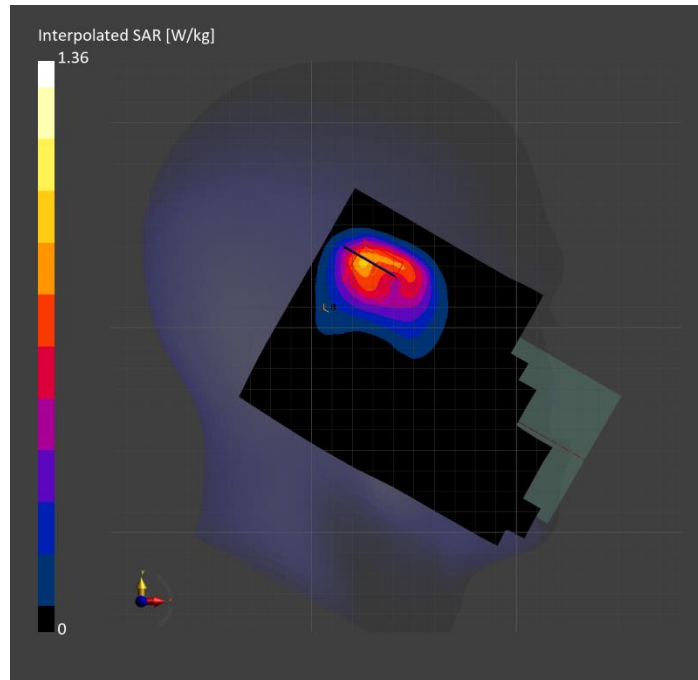
Probe Calibration Date	EX3DV4 - SN3929 2024-03-14	Phantom	Twin-SAM V5.0 (30deg probe tilt)
DAE Calibration Date	DAE4 Sn1546 2024-03-11	TSL Type	HBBL-600-10000
Software Version	16.2.4.2524		

Scan Setup

	Area Scan	Zoom Scan
Grid Extents [mm]	120.0 x 180.0	30.0 x 30.0 x 30.0
Grid Steps [mm]	10.0 x 10.0	5.0 x 5.0 x 1.5
Sensor Surface [mm]	3.0	1.4
Graded Grid	N/A	Yes
M2/M1 [%]		84.1
Dist 3dB Peak [mm]		8.1
Peak SAR [W/kg] SAR Peak Location [mm]	N/A	1.36 [25.0, 335.3, -174.3]

Measurement Results

	Area Scan	Zoom Scan
psSAR1g [W/Kg]	0.708	0.718
psSAR10g [W/Kg]	0.380	0.372
Power Drift [dB]	N/A	0.00



Band n48: 5G NR (DFT-s-OFDM, 1 RB, 40 MHz, QPSK, 30 kHz) RBPosition:High AntennaCfg:SISO, BACK

Exposure Conditions

Band	Band n48	TSL Permittivity	38.2
Frequency [MHz] Channel Number	3643.345 642890	TSL Conductivity [S/m]	2.89
Group UID	5G NR FR1 TDD 10903-AAD	Phantom Section TSL	Flat HSL
Conversion Factor	6.88	Test Distance [mm]	5.00

Hardware Setup

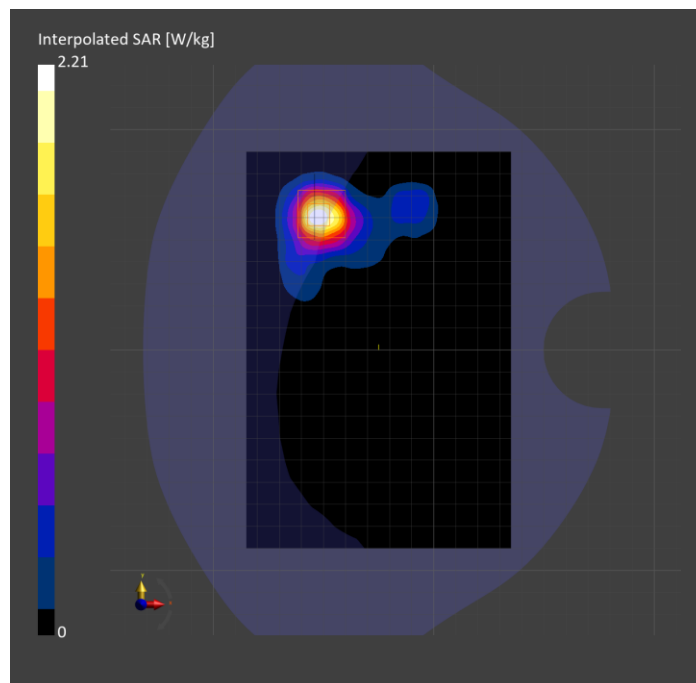
Probe Calibration Date	EX3DV4 - SN7335 2024-01-09	Phantom	Twin-SAM V8.0 (30deg probe tilt)
DAE Calibration Date	DAE4ip Sn1619 2024-04-11	TSL Type	HBBL-600-10000
Software Version	16.2.4.2524		

Scan Setup

	Area Scan	Zoom Scan
Grid Extents [mm]	120.0 x 180.0	28.0 x 28.0 x 28.0
Grid Steps [mm]	10.0 x 10.0	5.0 x 5.0 x 1.4
Sensor Surface [mm]	3.0	1.4
Graded Grid	N/A	Yes
M2/M1 [%]		68.9
Dist 3dB Peak [mm]		6.8
Peak SAR [W/kg] SAR Peak Location [mm]	N/A	2.21 [-54.0, 64.0, -209.8]

Measurement Results

	Area Scan	Zoom Scan
psSAR1g [W/Kg]	0.772	0.773
psSAR10g [W/Kg]	0.308	0.297
Power Drift [dB]	N/A	0.04



WLAN 2.4GHz: IEEE 802.11b WiFi 2.4 GHz (DSSS, 1 Mbps, 99pc duty cycle), EDGE RIGHT

Exposure Conditions

Band	WLAN 2.4GHz	TSL Permittivity	41.0
Frequency [MHz] Channel Number	2462.000 11	TSL Conductivity [S/m]	1.80
Group UID	WLAN 10415-AAA	Phantom Section TSL	Flat HSL
Conversion Factor	7.18	Test Distance [mm]	5.00

Hardware Setup

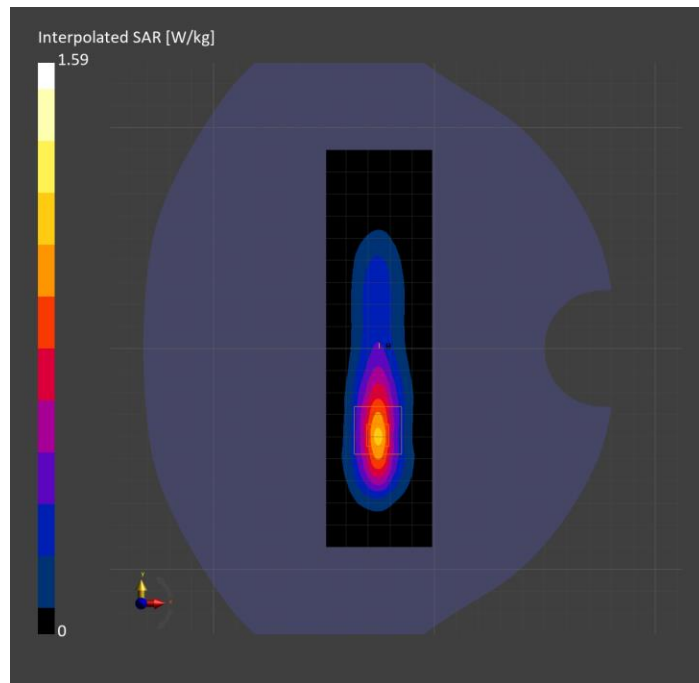
Probe Calibration Date	EX3DV4 - SN3772 2024-02-07	Phantom	Twin-SAM V8.0 (30deg probe tilt)
DAE Calibration Date	DAE4 Sn1258 2024-03-12	TSL Type	HBBL-600-10000
Software Version	16.2.4.2524		

Scan Setup

	Area Scan	Zoom Scan
Grid Extents [mm]	48.0 x 180.0	30.0 x 30.0 x 30.0
Grid Steps [mm]	8.0 x 10.0	5.0 x 5.0 x 1.5
Sensor Surface [mm]	3.0	1.4
Graded Grid	N/A	Yes
M2/M1 [%]		83.2
Dist 3dB Peak [mm]		7.1
Peak SAR [W/kg] SAR Peak Location [mm]	N/A	1.59 [-25.8, -38.5, -207.0]

Measurement Results

	Area Scan	Zoom Scan
psSAR1g [W/Kg]	0.803	0.811
psSAR10g [W/Kg]	0.360	0.375
Power Drift [dB]	N/A	-0.11



U-NII-1, U-NII-2A: IEEE 802.11ac WiFi (80MHz, MCS0, 99pc duty cycle), BACK

Exposure Conditions

Band	U-NII-1, U-NII-2A	TSL Permittivity	36.9
Frequency [MHz] Channel Number	5210.000 42	TSL Conductivity [S/m]	4.71
Group UID	WLAN 10544-AAD	Phantom Section TSL	Flat HSL
Conversion Factor	5.75	Test Distance [mm]	5.00

Hardware Setup

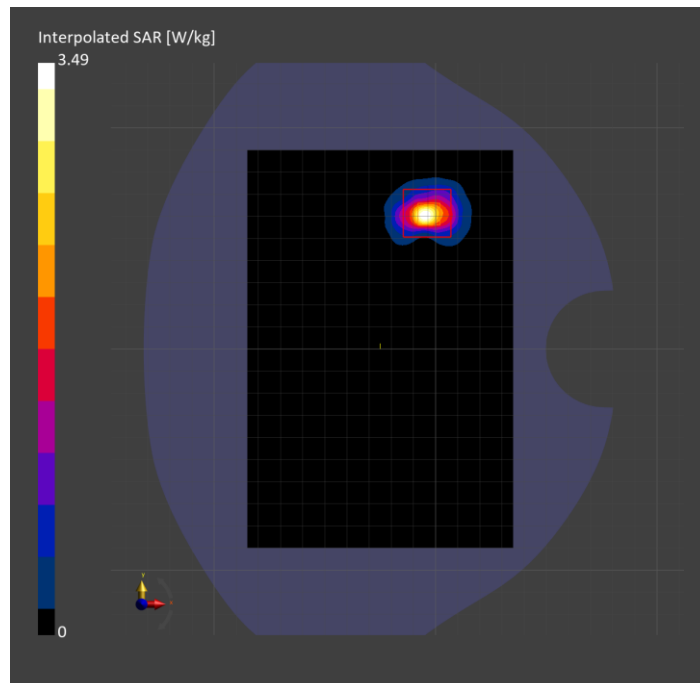
Probe Calibration Date	EX3DV4 - SN7810 2024-05-08	Phantom	Twin-SAM V8.0 (30deg probe tilt)
DAE Calibration Date	DAE4 Sn1787 2024-05-02	TSL Type	HBBL-600-10000
Software Version	16.2.4.2524		

Scan Setup

	Area Scan	Zoom Scan
Grid Extents [mm]	120.0 x 180.0	22.0 x 22.0 x 22.0
Grid Steps [mm]	10.0 x 10.0	4.0 x 4.0 x 1.4
Sensor Surface [mm]	3.0	1.4
Graded Grid	N/A	Yes
M2/M1 [%]		64.2
Dist 3dB Peak [mm]		5.6
Peak SAR [W/kg] SAR Peak Location [mm]	N/A	3.49 [-3.4, 61.2, -207.0]

Measurement Results

	Area Scan	Zoom Scan
psSAR1g [W/Kg]	0.750	0.854
psSAR10g [W/Kg]	0.218	0.232
Power Drift [dB]	N/A	-0.04



U-NII-8: IEEE 802.11ax (160MHz, MCS0, 99pc duty cycle), BACK

Exposure Conditions

Band	U-NII-8	TSL Permittivity	31.8
Frequency [MHz] Channel Number	6985.000 207	TSL Conductivity [S/m]	6.54
Group UID	WLAN 10755-AAC	Phantom Section TSL	Flat HSL
Conversion Factor	4.63	Test Distance [mm]	5.00

Hardware Setup

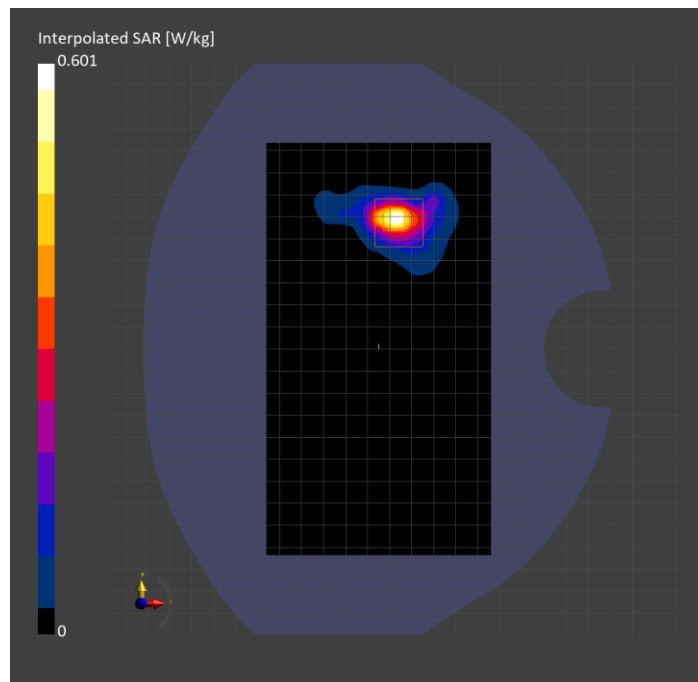
Probe Calibration Date	EX3DV4 - SN7587 2024-04-15	Phantom	Twin-SAM V8.0 (30deg probe tilt)
DAE Calibration Date	DAE4 Sn1797 2024-05-02	TSL Type	HBBL-600-10000
Software Version	16.2.4.2524		

Scan Setup

	Area Scan	Zoom Scan
Grid Extents [mm]	102.0 x 187.0	22.0 x 22.0 x 22.0
Grid Steps [mm]	8.5 x 8.5	3.4 x 3.4 x 1.4
Sensor Surface [mm]	3.0	1.4
Graded Grid	N/A	Yes
M2/M1 [%]		48.8
Dist 3dB Peak [mm]		6.1
Peak SAR [W/kg] SAR Peak Location [mm]	N/A	2.38 [-18.1, 59.6, -207.0]

Measurement Results

	Area Scan	Zoom Scan	APD
psSAR1g [W/Kg]	0.429	0.449	N/A
psSAR8g [W/Kg]	0.143	0.150	N/A
psSAR10g [W/Kg]	0.125	0.130	N/A
psAPD (4.0cm ² , sq.) [W/m ²]	N/A	N/A	3.01
Power Drift [dB]	N/A	-0.04	-0.04



ISM 2.4 GHz Band: IEEE 802.15.1 Bluetooth (GFSK, DH5), CHEEK

Exposure Conditions

Band	ISM 2.4 GHz Band	TSL Permittivity	41.0
Frequency [MHz] Channel Number	2480.000 78	TSL Conductivity [S/m]	1.82
Group UID	Bluetooth 10032-CAA	Phantom Section TSL	LeftHead HSL
Conversion Factor	7.18	Test Distance [mm]	0.00

Hardware Setup

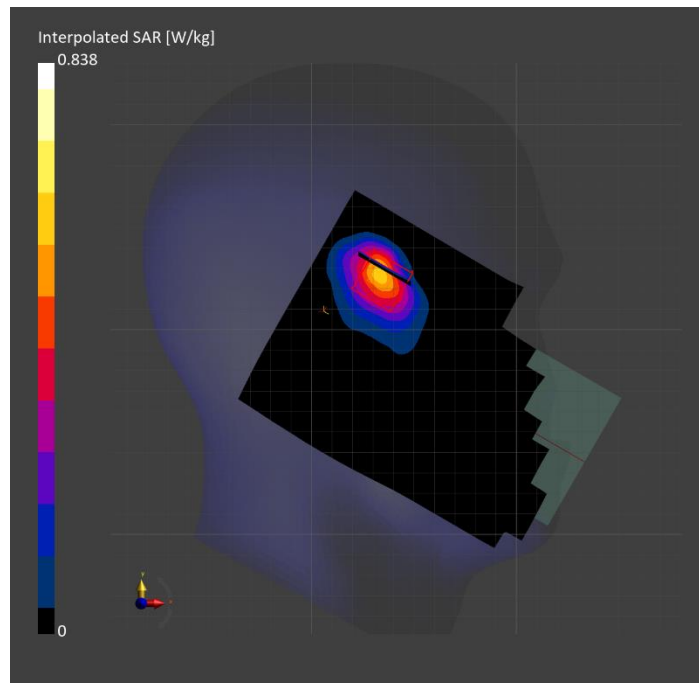
Probe Calibration Date	EX3DV4 - SN3772 2024-02-07	Phantom	Twin-SAM V8.0 (30deg probe tilt)
DAE Calibration Date	DAE4 Sn1258 2024-03-12	TSL Type	HBBL-600-10000
Software Version	16.2.4.2524		

Scan Setup

	Area Scan	Zoom Scan
Grid Extents [mm]	120.0 x 180.0	30.0 x 30.0 x 30.0
Grid Steps [mm]	10.0 x 10.0	5.0 x 5.0 x 1.5
Sensor Surface [mm]	3.0	1.4
Graded Grid	N/A	Yes
M2/M1 [%]		87.2
Dist 3dB Peak [mm]		6.0
Peak SAR [W/kg] SAR Peak Location [mm]	N/A	0.838 [34.8, 332.2, -174.6]

Measurement Results

	Area Scan	Zoom Scan
psSAR1g [W/Kg]	0.455	0.466
psSAR10g [W/Kg]	0.221	0.224
Power Drift [dB]	N/A	-0.02



CLA13: CW, BACK

Exposure Conditions

Band	CLA13	TSL Permittivity	54.3
Frequency [MHz] Channel Number	13.000 4	TSL Conductivity [S/m]	0.705
Group UID	CW 0--	Phantom Section TSL	Flat HSL
Conversion Factor	17.98	Test Distance [mm]	0.00

Hardware Setup

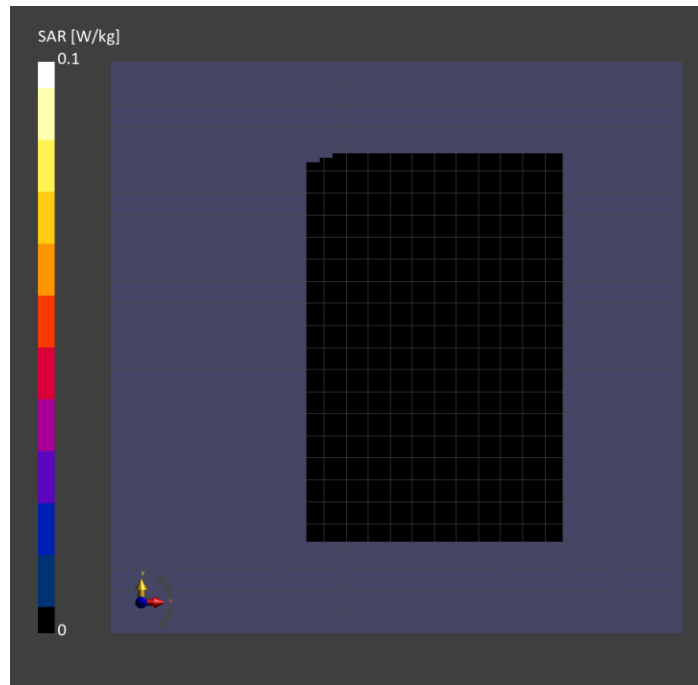
Probe Calibration Date	EX3DV4 - SN3991 2023-10-12	Phantom	ELI V5.0 (20deg probe tilt)
DAE Calibration Date	DAE4 Sn1380 2024-02-09	TSL Type	HBBL-600-10000
Software Version	16.2.4.2524		

Scan Setup

	Area Scan
Grid Extents [mm]	120.0 x 180.0
Grid Steps [mm]	15.0 x 15.0
Sensor Surface [mm]	3.0
Graded Grid	N/A

Measurement Results

	Area Scan
psSAR1g [W/Kg]	0
psSAR10g [W/Kg]	0
Power Drift [dB]	N/A



U-NII-6: IEEE 802.11ax (160MHz, MCS0, 99pc duty cycle), BACK

Exposure Conditions

Band	U-NII-6	TSL Permittivity	33.5
Frequency [MHz] Channel Number	6505.000 111	TSL Conductivity [S/m]	6.27
Group UID	WLAN 10755-AAC	Phantom Section TSL	Flat HSL
Conversion Factor	5.1	Test Distance [mm]	0.00

Hardware Setup

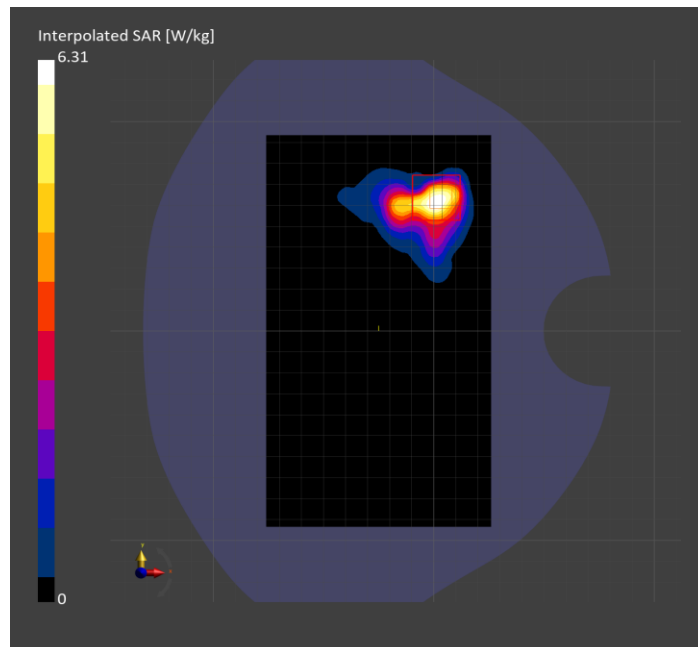
Probe Calibration Date	EX3DV4 - SN7810 2024-05-08	Phantom	Twin-SAM V8.0 (30deg probe tilt)
DAE Calibration Date	DAE4 Sn1258 2024-03-12	TSL Type	HBBL-600-10000
Software Version	16.2.4.2524		

Scan Setup

	Area Scan	Zoom Scan
Grid Extents [mm]	102.0 x 187.0	22.0 x 22.0 x 22.0
Grid Steps [mm]	8.5 x 8.5	3.4 x 3.4 x 1.4
Sensor Surface [mm]	3.0	1.4
Graded Grid	N/A	Yes
M2/M1 [%]		52.9
Dist 3dB Peak [mm]		4.6
Peak SAR [W/kg] SAR Peak Location [mm]	N/A	6.31 [3.8, 65.7, -207.0]

Measurement Results

	Area Scan	Zoom Scan	APD
psSAR1g [W/Kg]	0.934	1.10	N/A
psSAR8g [W/Kg]	0.351	0.339	N/A
psSAR10g [W/Kg]	0.311	0.288	N/A
psAPD (4.0cm ² , sq.) [W/m ²]	N/A	N/A	6.79
Power Drift [dB]	N/A	0.03	0.03



Band n30: 5G NR (DFT-s-OFDM, 1 RB, 10 MHz, QPSK, 15 kHz) RBPosition:High AntennaCfg:SISO, CHEEK

Exposure Conditions

Band	Band n30	TSL Permittivity	40.1
Frequency [MHz] Channel Number	2310.000 462000	TSL Conductivity [S/m]	1.62
Group UID	5G NR FR1 FDD 10929-AAD	Phantom Section TSL	LeftHead HSL
Conversion Factor	6.54	Test Distance [mm]	0.00

Hardware Setup

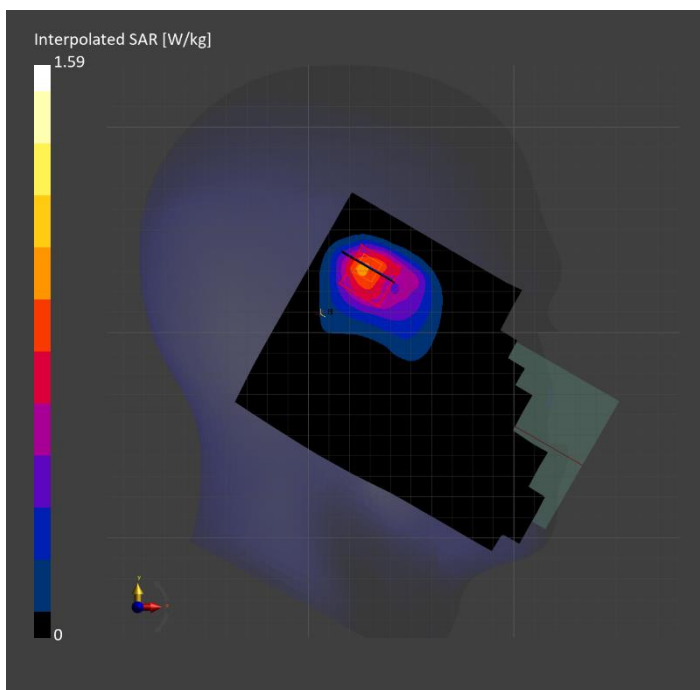
Probe Calibration Date	EX3DV4 - SN3686 2024-01-12	Phantom	Twin-SAM V4.0 (30deg probe tilt)
DAE Calibration Date	DAE4 Sn1547 2024-04-10	TSL Type	HBBL-600-10000
Software Version	16.2.4.2524		

Scan Setup

	Area Scan	Zoom Scan
Grid Extents [mm]	120.0 x 180.0	30.0 x 30.0 x 30.0
Grid Steps [mm]	10.0 x 10.0	5.0 x 5.0 x 1.5
Sensor Surface [mm]	3.0	1.4
Graded Grid	N/A	Yes
M2/M1 [%]		82.9
Dist 3dB Peak [mm]		8.1
Peak SAR [W/kg] SAR Peak Location [mm]	N/A	1.59 [25.7, 335.0, -174.3]

Measurement Results

	Area Scan	Zoom Scan
psSAR1g [W/Kg]	0.748	0.800
psSAR10g [W/Kg]	0.397	0.404
Power Drift [dB]	N/A	0.01



Band n48: 5G NR (DFT-s-OFDM, 1 RB, 40 MHz, QPSK, 30 kHz) RBPosition:High AntennaCfg:SISO, BACK

Exposure Conditions

Band	Band n48	TSL Permittivity	35.9
Frequency [MHz] Channel Number	3643.345 642890	TSL Conductivity [S/m]	2.89
Group UID	5G NR FR1 TDD 10903-AAD	Phantom Section TSL	Flat HSL
Conversion Factor	6.88	Test Distance [mm]	5.00

Hardware Setup

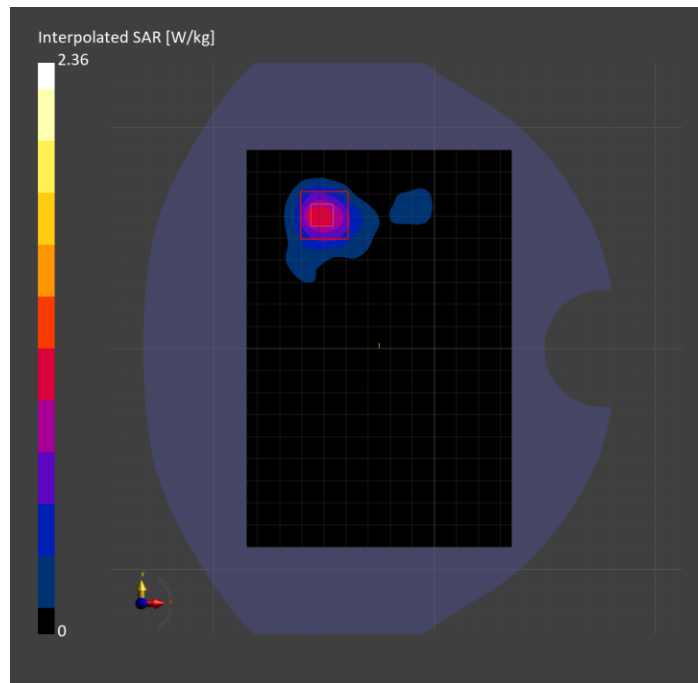
Probe Calibration Date	EX3DV4 - SN7335 2024-01-09	Phantom	Twin-SAM V8.0 (30deg probe tilt)
DAE Calibration Date	DAE4ip Sn1619 2024-04-11	TSL Type	HBBL-600-10000
Software Version	16.2.4.2524		

Scan Setup

	Area Scan	Zoom Scan
Grid Extents [mm]	120.0 x 180.0	28.0 x 28.0 x 28.0
Grid Steps [mm]	10.0 x 10.0	5.0 x 5.0 x 1.4
Sensor Surface [mm]	3.0	1.4
Graded Grid	N/A	Yes
M2/M1 [%]		69.9
Dist 3dB Peak [mm]		7.0
Peak SAR [W/kg] SAR Peak Location [mm]	N/A	2.36 [-52.5, 63.5, -207.0]

Measurement Results

	Area Scan	Zoom Scan
psSAR1g [W/Kg]	0.829	0.861
psSAR10g [W/Kg]	0.336	0.341
Power Drift [dB]	N/A	-0.07



WLAN 2.4GHz: IEEE 802.11b WiFi 2.4 GHz (DSSS, 1 Mbps, 99pc duty cycle), EDGE RIGHT

Exposure Conditions

Band	WLAN 2.4GHz	TSL Permittivity	41.0
Frequency [MHz] Channel Number	2462.000 11	TSL Conductivity [S/m]	1.80
Group UID	WLAN 10415-AAA	Phantom Section TSL	Flat HSL
Conversion Factor	7.18	Test Distance [mm]	5.00

Hardware Setup

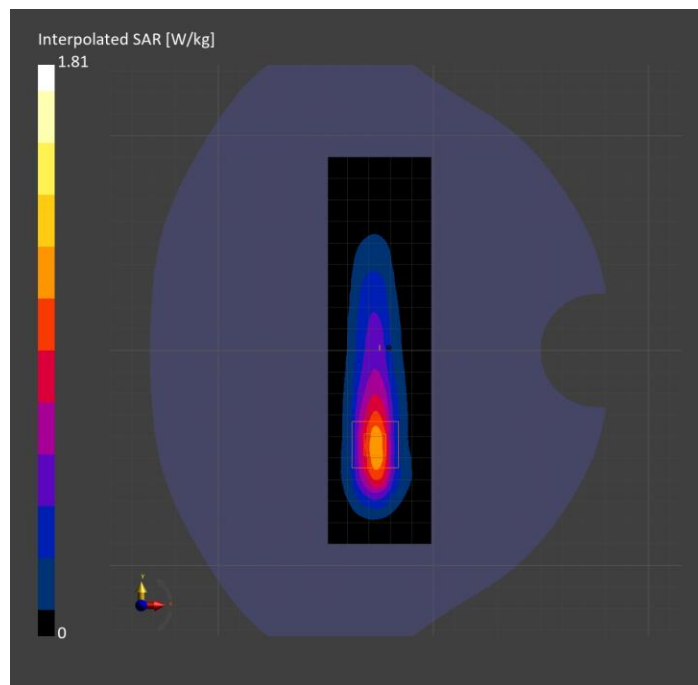
Probe Calibration Date	EX3DV4 - SN3772 2024-02-07	Phantom	Twin-SAM V8.0 (30deg probe tilt)
DAE Calibration Date	DAE4 Sn1258 2024-03-12	TSL Type	HBBL-600-10000
Software Version	16.2.4.2524		

Scan Setup

	Area Scan	Zoom Scan
Grid Extents [mm]	48.0 x 180.0	30.0 x 30.0 x 30.0
Grid Steps [mm]	8.0 x 10.0	5.0 x 5.0 x 1.5
Sensor Surface [mm]	3.0	1.4
Graded Grid	N/A	Yes
M2/M1 [%]		80.6
Dist 3dB Peak [mm]		7.3
Peak SAR [W/kg] SAR Peak Location [mm]	N/A	1.81 [-27.1, -45.5, -207.0]

Measurement Results

	Area Scan	Zoom Scan
psSAR1g [W/Kg]	0.885	0.891
psSAR10g [W/Kg]	0.404	0.409
Power Drift [dB]	N/A	0.01



U-NII-1, U-NII-2A: IEEE 802.11ac WiFi (80MHz, MCS0, 99pc duty cycle), BACK

Exposure Conditions

Band	U-NII-1, U-NII-2A	TSL Permittivity	37.6
Frequency [MHz] Channel Number	5210.000 42	TSL Conductivity [S/m]	4.78
Group UID	WLAN 10544-AAD	Phantom Section TSL	Flat HSL
Conversion Factor	5.75	Test Distance [mm]	5.00

Hardware Setup

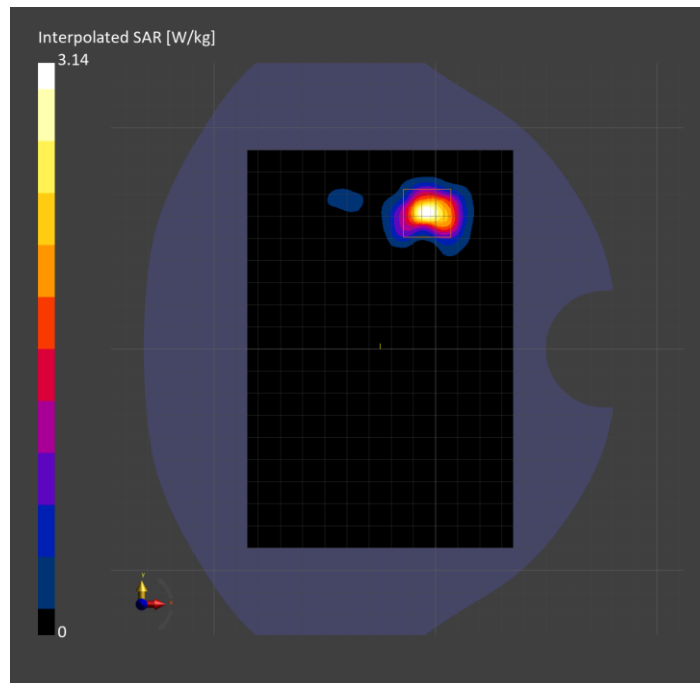
Probe Calibration Date	EX3DV4 - SN7810 2024-05-08	Phantom	Twin-SAM V8.0 (30deg probe tilt)
DAE Calibration Date	DAE4 Sn1787 2024-05-02	TSL Type	HBBL-600-10000
Software Version	16.2.4.2524		

Scan Setup

	Area Scan	Zoom Scan
Grid Extents [mm]	120.0 x 180.0	22.0 x 22.0 x 22.0
Grid Steps [mm]	10.0 x 10.0	4.0 x 4.0 x 1.4
Sensor Surface [mm]	3.0	1.4
Graded Grid	N/A	Yes
M2/M1 [%]		64.9
Dist 3dB Peak [mm]		5.7
Peak SAR [W/kg] SAR Peak Location [mm]	N/A	3.14 [-2.1, 62.0, -207.0]

Measurement Results

	Area Scan	Zoom Scan
psSAR1g [W/Kg]	0.653	0.775
psSAR10g [W/Kg]	0.195	0.213
Power Drift [dB]	N/A	-0.05



U-NII-8: IEEE 802.11ax (160MHz, MCS0, 99pc duty cycle), BACK

Exposure Conditions

Band	U-NII-8	TSL Permittivity	33.7
Frequency [MHz] Channel Number	6985.000 207	TSL Conductivity [S/m]	6.76
Group UID	WLAN 10755-AAC	Phantom Section TSL	Flat HSL
Conversion Factor	5.1	Test Distance [mm]	5.00

Hardware Setup

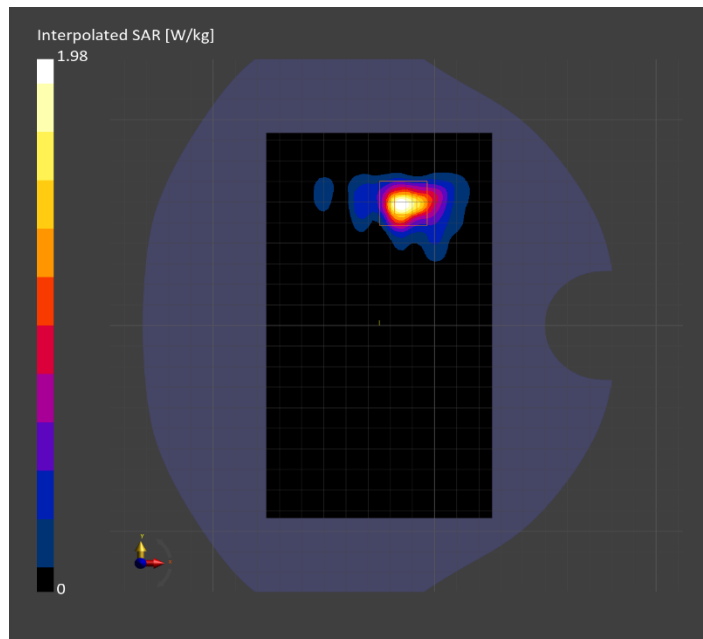
Probe Calibration Date	EX3DV4 - SN7810 2024-05-08	Phantom	Twin-SAM V8.0 (30deg probe tilt)
DAE Calibration Date	DAE4 Sn1787 2024-05-02	TSL Type	HBBL-600-10000
Software Version	16.2.4.2524		

Scan Setup

	Area Scan	Zoom Scan
Grid Extents [mm]	102.0 x 187.0	22.0 x 22.0 x 22.0
Grid Steps [mm]	8.5 x 8.5	3.4 x 3.4 x 1.4
Sensor Surface [mm]	3.0	1.4
Graded Grid	N/A	Yes
M2/M1 [%]		47.8
Dist 3dB Peak [mm]		5.9
Peak SAR [W/kg] SAR Peak Location [mm]	N/A	1.98 [-13.0, 58.9, -207.0]

Measurement Results

	Area Scan	Zoom Scan	APD
psSAR1g [W/Kg]	0.336	0.364	N/A
psSAR8g [W/Kg]	0.112	0.121	N/A
psSAR10g [W/Kg]	0.097	0.103	N/A
psAPD (4.0cm ² , sq.) [W/m ²]	N/A	N/A	2.42
Power Drift [dB]	N/A	0.03	0.03



ISM 2.4 GHz Band: IEEE 802.15.1 Bluetooth (GFSK, DH5), CHEEK

Exposure Conditions

Band	ISM 2.4 GHz Band	TSL Permittivity	41.0
Frequency [MHz] Channel Number	2480.000 78	TSL Conductivity [S/m]	1.82
Group UID	Bluetooth 10032-CAA	Phantom Section TSL	LeftHead HSL
Conversion Factor	7.18	Test Distance [mm]	0.00

Hardware Setup

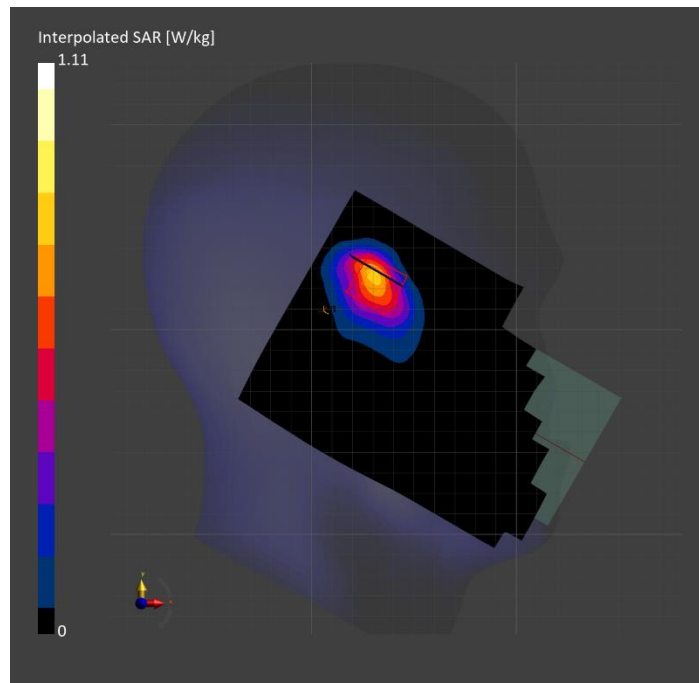
Probe Calibration Date	EX3DV4 - SN3772 2024-02-07	Phantom	Twin-SAM V8.0 (30deg probe tilt)
DAE Calibration Date	DAE4 Sn1258 2024-03-12	TSL Type	HBBL-600-10000
Software Version	16.2.4.2524		

Scan Setup

	Area Scan	Zoom Scan
Grid Extents [mm]	120.0 x 180.0	30.0 x 30.0 x 30.0
Grid Steps [mm]	10.0 x 10.0	5.0 x 5.0 x 1.5
Sensor Surface [mm]	3.0	1.4
Graded Grid	N/A	Yes
M2/M1 [%]		86.4
Dist 3dB Peak [mm]		8.9
Peak SAR [W/kg] SAR Peak Location [mm]	N/A	1.11 [29.1, 331.2, -174.7]

Measurement Results

	Area Scan	Zoom Scan
psSAR1g [W/Kg]	0.599	0.622
psSAR10g [W/Kg]	0.293	0.305
Power Drift [dB]	N/A	-0.02



CLA13: CW, BACK

Exposure Conditions

Band	CLA13	TSL Permittivity	54.3
Frequency [MHz] Channel Number	13.000 4	TSL Conductivity [S/m]	0.705
Group UID	CW 0--	Phantom Section TSL	Flat HSL
Conversion Factor	17.98	Test Distance [mm]	0.00

Hardware Setup

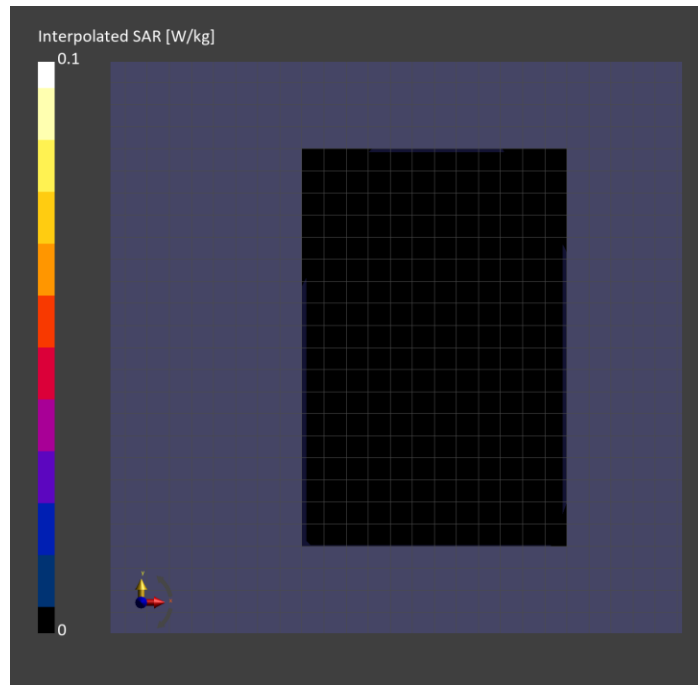
Probe Calibration Date	EX3DV4 - SN3991 2023-10-12	Phantom	ELI V5.0 (20deg probe tilt)
DAE Calibration Date	DAE4 Sn1380 2024-02-09	TSL Type	HBBL-600-10000
Software Version	16.2.4.2524		

Scan Setup

	Area Scan
Grid Extents [mm]	120.0 x 180.0
Grid Steps [mm]	15.0 x 15.0
Sensor Surface [mm]	3.0
Graded Grid	N/A

Measurement Results

	Area Scan
psSAR1g [W/Kg]	0
psSAR10g [W/Kg]	0
Power Drift [dB]	N/A



U-NII-6: IEEE 802.11ax (160MHz, MCS0, 99pc duty cycle), BACK

Exposure Conditions

Band	U-NII-6	TSL Permittivity	33.5
Frequency [MHz] Channel Number	6505.000 111	TSL Conductivity [S/m]	6.24
Group UID	WLAN 10755-AAC	Phantom Section TSL	Flat HSL
Conversion Factor	4.63	Test Distance [mm]	5.00

Hardware Setup

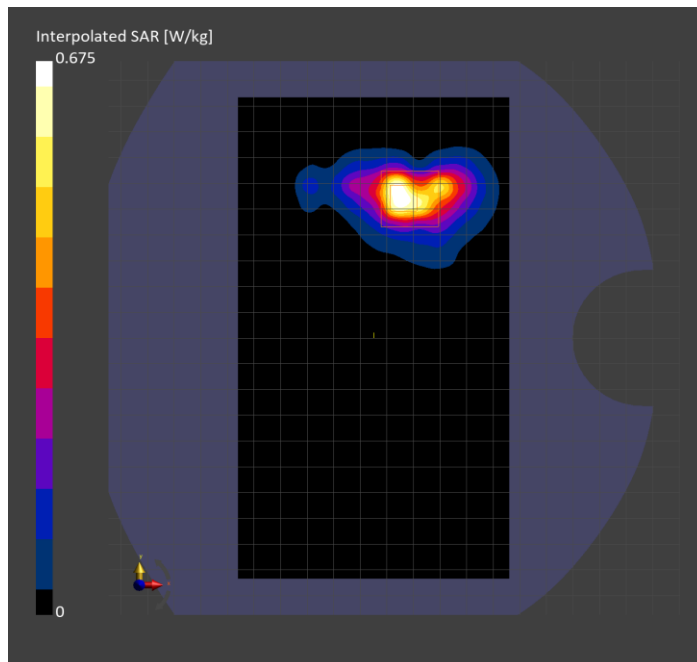
Probe Calibration Date	EX3DV4 - SN7587 2024-04-15	Phantom	Twin-SAM V8.0 (30deg probe tilt)
DAE Calibration Date	DAE4 Sn1797 2024-05-02	TSL Type	HBBL-600-10000
Software Version	16.2.4.2524		

Scan Setup

	Area Scan	Zoom Scan
Grid Extents [mm]	102.0 x 187.0	22.0 x 22.0 x 22.0
Grid Steps [mm]	8.5 x 8.5	3.4 x 3.4 x 1.4
Sensor Surface [mm]	3.0	1.4
Graded Grid	N/A	Yes
M2/M1 [%]		52.9
Dist 3dB Peak [mm]		5.9
Peak SAR [W/kg] SAR Peak Location [mm]	N/A	3.19 [-13.0, 54.6, -207.0]

Measurement Results

	Area Scan	Zoom Scan	APD
psSAR1g [W/Kg]	0.519	0.639	N/A
psSAR8g [W/Kg]	0.197	0.220	N/A
psSAR10g [W/Kg]	0.174	0.192	N/A
psAPD (4.0cm ² , sq.) [W/m ²]	N/A	N/A	4.40
Power Drift [dB]	N/A	-0.14	-0.14



SAR Dielectric Property Measurements and System Checks

Liquid Check											System Check												
SAR Lab	Date	Tissue Type	Band (MHz)	Freq. (MHz)	Relative Permittivity (ϵ_r)			Conductivity (σ)			Date	Dipole Type & Serial Number	Dipole Cal. Due Date	Input Power (dBm)	Measured results for 1-g SAR				Measured results for 10-g SAR				Plot No.
					Measured	Target	Delta	Measured	Target	Delta					Meas. Zoom Scan	Normalize to 1 W	Target (Ref. Value)	Delta $\pm 10\%$	Meas. Zoom Scan	Normalize to 1 W	Target (Ref. Value)	Delta $\pm 10\%$	
SAR A	7/12/2024	Head	2300	2300	40.07	39.47	1.51%	1.61	1.66	-3.29%	7/12/2024	D2300V2 SN: 1058	10/13/2024	20.0	4.810	48.100	48.500	-0.82%	2.350	23.500	23.600	-0.42%	30
				2350	40.00	39.38	1.56%	1.65	1.71	-3.67%													
				2400	39.94	39.30	1.64%	1.68	1.75	-4.20%													
SAR G	7/11/2024	Head	13	13	54.28	55.00	-1.31%	0.70	0.75	-6.05%	7/11/2024	CLA13 SN: 1008	1/12/2025	30.0	0.493	0.493	0.544	-9.38%	0.305	0.305	0.338	-9.76%	31
				12	54.37	55.00	-1.15%	0.70	0.75	-6.05%													
				14	54.04	55.00	-1.75%	0.70	0.75	-6.04%													
SAR H	7/11/2024	Head	2300	2300	39.61	39.47	0.35%	1.69	1.66	1.52%	7/11/2024	D2300V2 SN: 1058	10/13/2024	20.0	4.950	49.500	48.500	2.06%	2.400	24.000	23.600	1.69%	32
				2350	39.54	39.38	0.39%	1.73	1.71	1.31%													
				2400	39.45	39.30	0.39%	1.77	1.75	0.93%													
SAR H	7/11/2024	Head	2600	2600	39.10	39.01	0.23%	1.94	1.96	-1.33%	7/11/2024	D2600V2 SN: 1006	10/13/2024	20.0	5.480	54.800	56.100	-2.32%	2.500	25.000	25.400	-1.57%	33
				2495	39.29	39.14	0.37%	1.84	1.85	-0.31%													
				2690	38.92	38.90	0.06%	2.01	2.06	-2.50%													
SAR I	7/8/2024	Head	2600	2600	40.02	39.01	2.59%	1.97	1.96	0.20%	7/8/2024	D2600V2 SN: 1036	4/11/2025	20.0	5.690	56.900	55.400	2.71%	2.570	25.700	24.900	3.21%	34
				2495	40.19	39.14	2.67%	1.87	1.85	1.10%													
				2690	39.85	38.90	2.45%	2.04	2.06	-0.80%													
SAR I	7/12/2024	Head	2600	2600	37.86	39.01	-2.95%	1.98	1.96	1.01%	7/12/2024	D2600V2 SN: 1036	4/11/2025	20.0	5.870	58.700	55.400	5.96%	2.660	26.600	24.900	6.83%	34
				2495	38.05	39.14	-2.79%	1.89	1.85	2.18%													
				2690	37.68	38.90	-3.13%	2.06	2.06	-0.07%													
SAR 1	7/10/2024	Head	2450	2450	41.06	39.20	4.74%	1.79	1.80	-0.44%	7/10/2024	D2450V2 SN: 706	1/20/2025	20.0	4.960	49.600	52.300	-5.16%	2.350	23.500	24.500	-4.08%	35
				2400	41.10	39.30	4.59%	1.75	1.75	0.08%													
				2500	40.96	39.14	4.66%	1.84	1.85	-1.03%													
SAR 12	7/15/2024	Head	1640	1640	40.21	40.25	-0.11%	1.25	1.31	-4.74%	7/15/2024	D1640V2 SN: 324	6/13/2025	20.0	3.310	33.100	33.900	-2.36%	1.850	18.500	18.300	1.09%	36
				1610	40.25	40.30	-0.12%	1.23	1.29	-4.73%													
				1665	40.26	40.22	0.11%	1.26	1.32	-4.85%													
SAR 16	7/14/2024	Head	2450	2450	38.60	39.20	-1.53%	1.81	1.80	0.28%	7/14/2024	D2450V2 SN: 748	2/8/2025	20.0	5.080	50.800	51.700	-1.74%	2.360	23.600	24.200	-2.48%	37
				2400	38.69	39.30	-1.54%	1.77	1.75	0.88%													
				2500	38.51	39.14	-1.60%	1.84	1.85	-0.70%													
SAR 6	7/10/2024	Head	6500	6500	32.76	34.50	-5.04%	6.07	6.07	0.02%	7/10/2024	D6.5GHzV2 SN: 1033	3/15/2025	19.0	23.700	298.365	288.000	3.60%	4.330	54.511	53.100	2.66%	38
				5900	33.88	35.20	-3.75%	5.36	5.38	-0.41%													
				7200	31.60	33.70	-6.23%	6.74	6.89	-2.24%													
SAR 8	7/10/2024	Head	6500	6500	34.70	34.50	0.58%	6.25	6.07	2.90%	7/10/2024	D6.5GHzV2 SN: 1033	3/15/2025	19.0	22.800	287.035	288.000	-0.34%	4.190	52.749	53.100	-0.66%	39
				5900	35.85	35.20	1.85%	5.49	5.38	2.04%													
				7200	33.51	33.70	-0.56%	6.96	6.89	1.04%													
SAR 8	7/15/2024	Head	6500	6500	33.50	34.50	-2.90%	6.27	6.07	3.29%	7/15/2024	D6.5GHzV2 SN: 1033	3/15/2025	19.0	24.000	302.142	288.000	4.91%	4.410	55.519	53.100	4.55%	39
				5900	34.71	35.20	-1.39%	5.55	5.38	3.16%													
				7200	32.31	33.70	-4.12%	7.04	6.89	2.18%													

System Performance Check Report for D2300V2 - SN1058

Exposure Conditions

Frequency [MHz] Channel Number	2300.000 0	TSL Permittivity	40.1
Group UID	CW 0--	TSL Conductivity [S/m]	1.61
Conversion Factor	6.54	Phantom Section TSL	Flat HSL

Hardware Setup

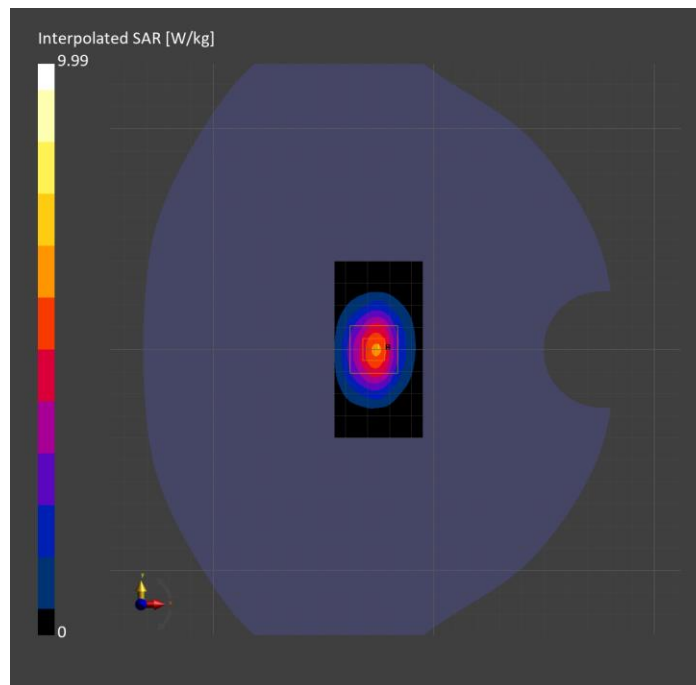
Probe Calibration Date	EX3DV4 - SN3686 2024-01-12	Phantom	Twin-SAM V4.0 (30deg probe tilt)
DAE Calibration Date	DAE4 Sn1547 2024-04-10	TSL Type	HBBL-600-10000
Software Version	16.2.4.2524		

Scans Setup

	Area Scan	Zoom Scan
Grid Extents [mm]	40.0 x 80.0	30.0 x 30.0 x 30.0
Grid Steps [mm]	10.0 x 10.0	5.0 x 5.0 x 1.5
Sensor Surface [mm]	3.0	1.4
Graded Grid	N/A	Yes
M2/M1 [%]		78.2
Dist 3dB Peak [mm]		9.0

Measurement Results

	Area Scan	Zoom Scan
psSAR1g [W/Kg]	4.63	4.81
psSAR10g [W/Kg]	2.22	2.35
Power Drift [dB]	N/A	-0.00



System Performance Check Report for CLA-13 - SN1008

Exposure Conditions

Frequency [MHz] Channel Number	13.000 0	TSL Permittivity	54.3
Group UID	CW 0--	TSL Conductivity [S/m]	0.705
Conversion Factor	17.98	Phantom Section TSL	Flat HSL

Hardware Setup

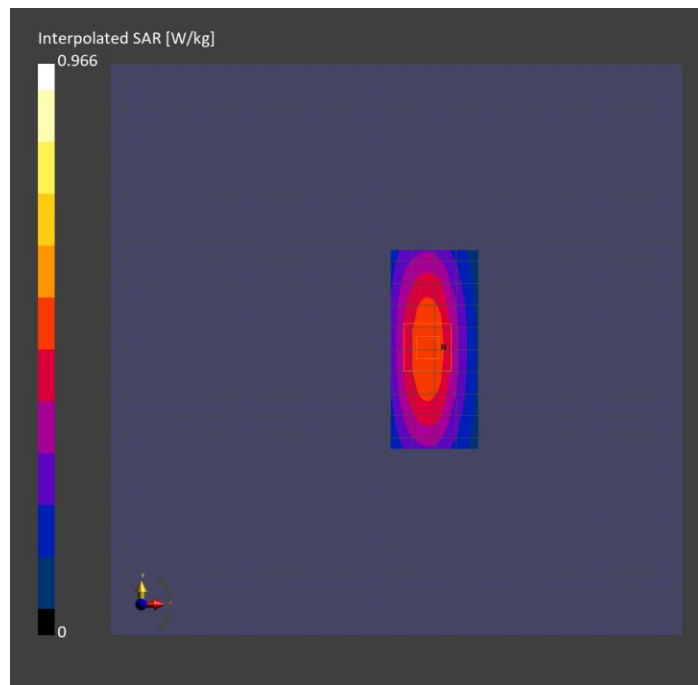
Probe Calibration Date	EX3DV4 - SN3991 2023-10-12	Phantom	ELI V5.0 (20deg probe tilt)
DAE Calibration Date	DAE4 Sn1380 2024-02-09	TSL Type	HBBL-600-10000
Software Version	16.2.4.2524		

Scans Setup

	Area Scan	Zoom Scan
Grid Extents [mm]	40.0 x 90.0	30.0 x 30.0 x 30.0
Grid Steps [mm]	10.0 x 15.0	6.0 x 6.0 x 1.5
Sensor Surface [mm]	3.0	1.4
Graded Grid	N/A	Yes
M2/M1 [%]		76.8
Dist 3dB Peak [mm]		14.5

Measurement Results

	Area Scan	Zoom Scan
psSAR1g [W/Kg]	0.522	0.493
psSAR10g [W/Kg]	0.421	0.305
Power Drift [dB]	N/A	-0.00



System Performance Check Report for D2300V2 - SN1058

Exposure Conditions

Frequency [MHz] Channel Number	2300.000 0	TSL Permittivity	39.6
Group UID	CW 0--	TSL Conductivity [S/m]	1.69
Conversion Factor	7.39	Phantom Section TSL	Flat HSL

Hardware Setup

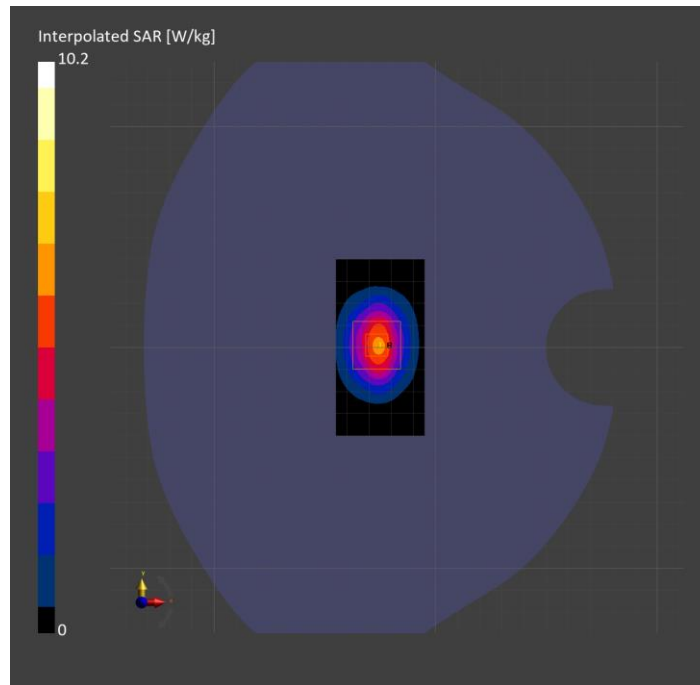
Probe Calibration Date	EX3DV4 - SN3929 2024-03-14	Phantom	Twin-SAM V5.0 (30deg probe tilt)
DAE Calibration Date	DAE4 Sn1546 2024-03-11	TSL Type	HBBL-600-10000
Software Version	16.2.4.2524		

Scans Setup

	Area Scan	Zoom Scan
Grid Extents [mm]	40.0 x 80.0	30.0 x 30.0 x 30.0
Grid Steps [mm]	10.0 x 10.0	5.0 x 5.0 x 1.5
Sensor Surface [mm]	3.0	1.4
Graded Grid	N/A	Yes
M2/M1 [%]		79.4
Dist 3dB Peak [mm]		9.0

Measurement Results

	Area Scan	Zoom Scan
psSAR1g [W/Kg]	4.85	4.95
psSAR10g [W/Kg]	2.33	2.40
Power Drift [dB]	N/A	0.00



System Performance Check Report for D2600V2 - SN1006

Exposure Conditions

Frequency [MHz] Channel Number	2600.000 0	TSL Permittivity	39.1
Group UID	CW 0--	TSL Conductivity [S/m]	1.94
Conversion Factor	7.07	Phantom Section TSL	Flat HSL

Hardware Setup

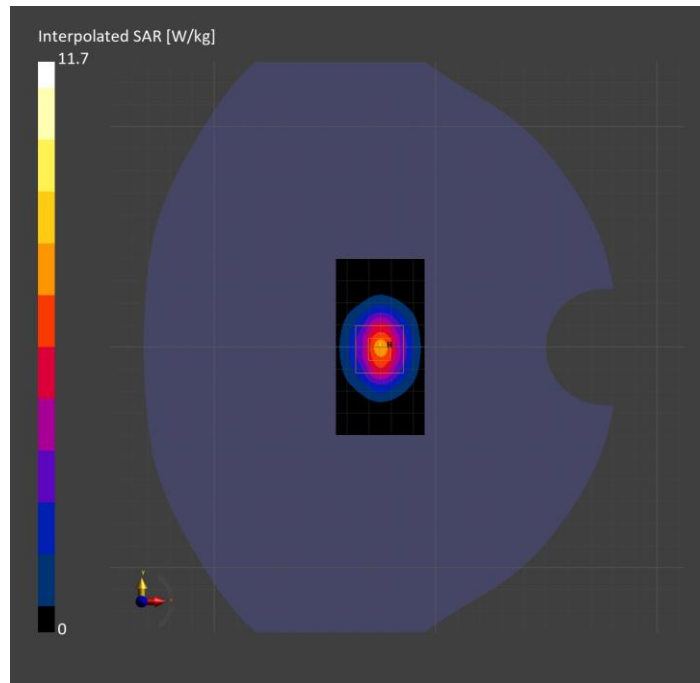
Probe Calibration Date	EX3DV4 - SN3929 2024-03-14	Phantom	Twin-SAM V5.0 (30deg probe tilt)
DAE Calibration Date	DAE4 Sn1546 2024-03-11	TSL Type	HBBL-600-10000
Software Version	16.2.4.2524		

Scans Setup

	Area Scan	Zoom Scan
Grid Extents [mm]	40.0 x 80.0	30.0 x 30.0 x 30.0
Grid Steps [mm]	10.0 x 10.0	5.0 x 5.0 x 1.5
Sensor Surface [mm]	3.0	1.4
Graded Grid	N/A	Yes
M2/M1 [%]		79.5
Dist 3dB Peak [mm]		9.0

Measurement Results

	Area Scan	Zoom Scan
psSAR1g [W/Kg]	5.52	5.48
psSAR10g [W/Kg]	2.45	2.50
Power Drift [dB]	N/A	0.01



System Performance Check Report for D2600V2 - SN1036

Exposure Conditions

Frequency [MHz] Channel Number	2600.000 0	TSL Permittivity	37.9
Group UID	CW 0--	TSL Conductivity [S/m]	1.98
Conversion Factor	7.4	Phantom Section TSL	Flat HSL

Hardware Setup

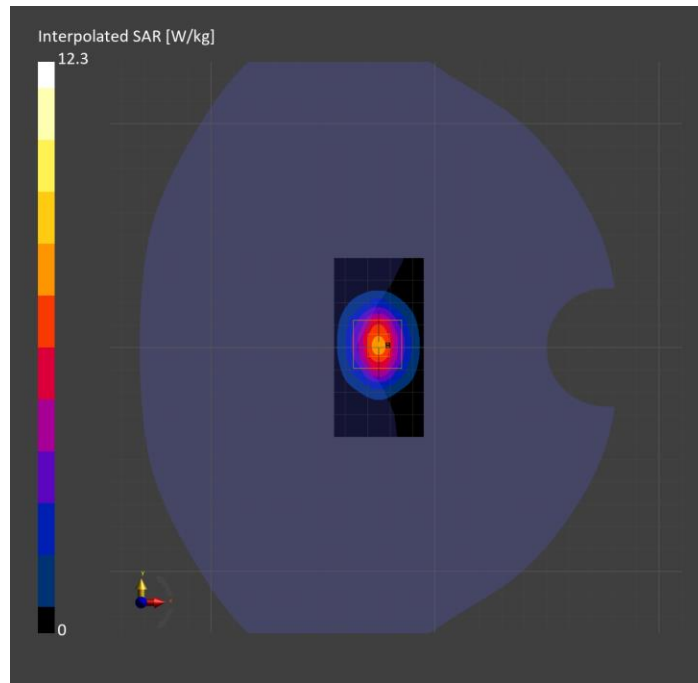
Probe Calibration Date	EX3DV4 - SN7335 2024-01-09	Phantom	Twin-SAM V8.0 (30deg probe tilt)
DAE Calibration Date	DAE4ip Sn1619 2024-04-11	TSL Type	HBBL-600-10000
Software Version	16.2.4.2524		

Scans Setup

	Area Scan	Zoom Scan
Grid Extents [mm]	40.0 x 80.0	30.0 x 30.0 x 30.0
Grid Steps [mm]	10.0 x 10.0	5.0 x 5.0 x 1.5
Sensor Surface [mm]	3.0	1.4
Graded Grid	N/A	Yes
M2/M1 [%]		79.7
Dist 3dB Peak [mm]		9.0

Measurement Results

	Area Scan	Zoom Scan
psSAR1g [W/Kg]	5.85	5.87
psSAR10g [W/Kg]	2.62	2.66
Power Drift [dB]	N/A	0.01



System Performance Check Report for D2450V2 - SN706

Exposure Conditions

Frequency [MHz] Channel Number	2450.000 0	TSL Permittivity	41.1
Group UID	CW 0--	TSL Conductivity [S/m]	1.79
Conversion Factor	7.18	Phantom Section TSL	Flat HSL

Hardware Setup

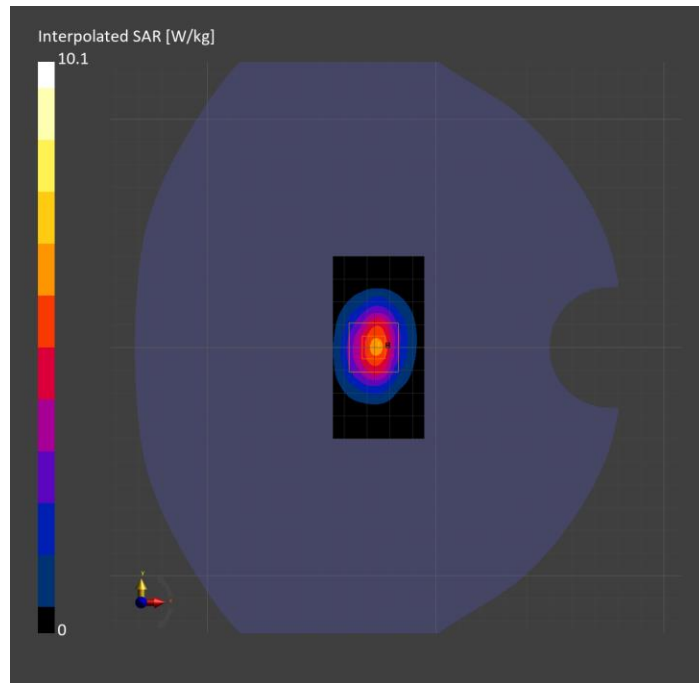
Probe Calibration Date	EX3DV4 - SN3772 2024-02-07	Phantom	Twin-SAM V8.0 (30deg probe tilt)
DAE Calibration Date	DAE4 Sn1258 2024-03-12	TSL Type	HBBL-600-10000
Software Version	16.2.4.2524		

Scans Setup

	Area Scan	Zoom Scan
Grid Extents [mm]	40.0 x 80.0	30.0 x 30.0 x 30.0
Grid Steps [mm]	10.0 x 10.0	5.0 x 5.0 x 1.5
Sensor Surface [mm]	3.0	1.4
Graded Grid	N/A	Yes
M2/M1 [%]		79.9
Dist 3dB Peak [mm]		8.3

Measurement Results

	Area Scan	Zoom Scan
psSAR1g [W/Kg]	4.78	4.96
psSAR10g [W/Kg]	2.22	2.35
Power Drift [dB]	N/A	-0.03



System Performance Check Report for D1640V2 - SN324

Exposure Conditions

Frequency [MHz] Channel Number	1640.000 0	TSL Permittivity	40.2
Group UID	CW 0--	TSL Conductivity [S/m]	1.24
Conversion Factor	8.51	Phantom Section TSL	Flat HSL

Hardware Setup

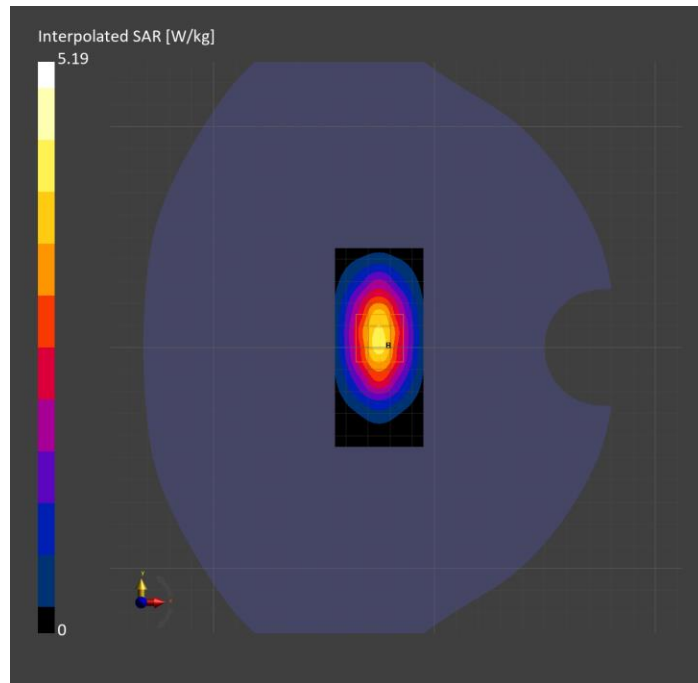
Probe Calibration Date	EX3DV4 - SN3989 2024-01-09	Phantom	Twin-SAM V8.0 (30deg probe tilt)
DAE Calibration Date	DAE4 Sn1433 2024-02-08	TSL Type	HBBL-600-10000
Software Version	16.2.4.2524		

Scans Setup

	Area Scan	Zoom Scan
Grid Extents [mm]	40.0 x 90.0	30.0 x 30.0 x 30.0
Grid Steps [mm]	10.0 x 15.0	6.0 x 6.0 x 1.5
Sensor Surface [mm]	3.0	1.4
Graded Grid	N/A	Yes
M2/M1 [%]		90.3
Dist 3dB Peak [mm]		10.3

Measurement Results

	Area Scan	Zoom Scan
psSAR1g [W/Kg]	3.37	3.31
psSAR10g [W/Kg]	1.84	1.85
Power Drift [dB]	0.00	0.01



System Performance Check Report for D2450V2 - SN748

Exposure Conditions

Frequency [MHz] Channel Number	2450.000 0	TSL Permittivity	38.6
Group UID	CW 0--	TSL Conductivity [S/m]	1.81
Conversion Factor	7.3	Phantom Section TSL	Flat HSL

Hardware Setup

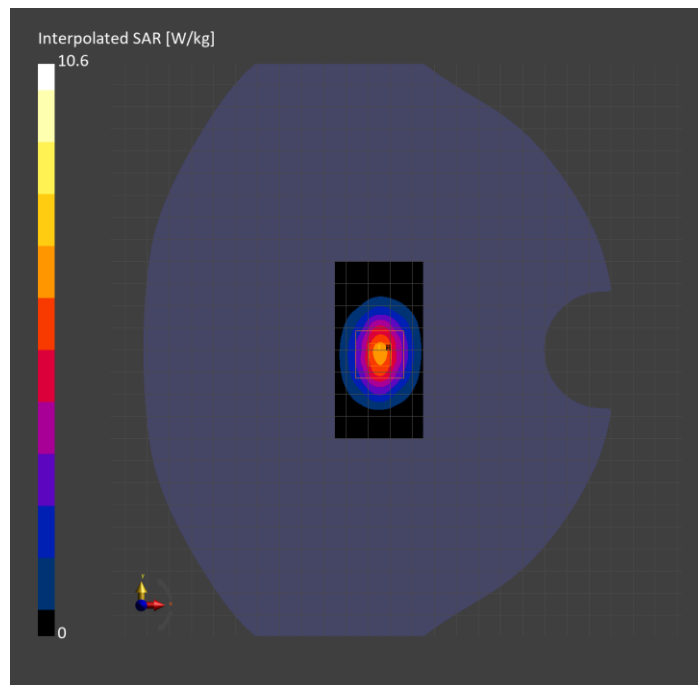
Probe Calibration Date	EX3DV4 - SN7850 2023-10-27	Phantom	Twin-SAM V8.0 (30deg probe tilt)
DAE Calibration Date	DAE4 Sn1673 2024-05-13	TSL Type	HBBL-600-10000
Software Version	16.2.4.2524		

Scans Setup

	Area Scan	Zoom Scan
Grid Extents [mm]	40.0 x 80.0	30.0 x 30.0 x 30.0
Grid Steps [mm]	10.0 x 10.0	5.0 x 5.0 x 1.5
Sensor Surface [mm]	3.0	1.4
Graded Grid	N/A	Yes
M2/M1 [%]		79.9
Dist 3dB Peak [mm]		9.0

Measurement Results

	Area Scan	Zoom Scan
psSAR1g [W/Kg]	5.17	5.08
psSAR10g [W/Kg]	2.40	2.36
Power Drift [dB]	N/A	-0.02



System Performance Check Report for D6.5GHzV2 - SN1033

Exposure Conditions

Frequency [MHz] Channel Number	6500.000 0	TSL Permittivity	32.8
Group UID	CW 0--	TSL Conductivity [S/m]	6.07
Conversion Factor	4.63	Phantom Section TSL	Flat HSL

Hardware Setup

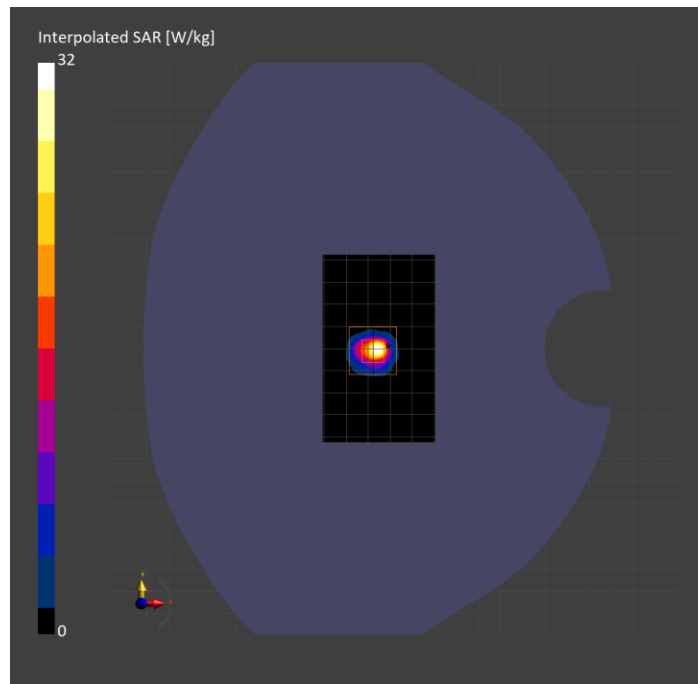
Probe Calibration Date	EX3DV4 - SN7587 2024-04-15	Phantom	Twin-SAM V8.0 (30deg probe tilt)
DAE Calibration Date	DAE4 Sn1797 2024-05-02	TSL Type	HBBL-600-10000
Software Version	16.2.4.2524		

Scans Setup

	Area Scan	Zoom Scan
Grid Extents [mm]	51.0 x 85.0	22.0 x 22.0 x 22.0
Grid Steps [mm]	8.5 x 8.5	3.4 x 3.4 x 1.4
Sensor Surface [mm]	3.0	1.4
Graded Grid	N/A	Yes
M2/M1 [%]		51.0
Dist 3dB Peak [mm]		4.8

Measurement Results

	Area Scan	Zoom Scan	APD
psSAR1g [W/Kg]	18.2	23.7	N/A
psSAR8g [W/Kg]	4.61	5.28	N/A
psSAR10g [W/Kg]	3.83	4.33	N/A
psAPD (4.0cm ² , sq.) [W/m ²]	N/A	N/A	106
Power Drift [dB]	N/A	0.10	N/A



System Performance Check Report for D6.5GHzV2 - SN1033

Exposure Conditions

Frequency [MHz] Channel Number	6500.000 0	TSL Permittivity	33.5
Group UID	CW 0--	TSL Conductivity [S/m]	6.27
Conversion Factor	5.1	Phantom Section TSL	Flat HSL

Hardware Setup

Probe Calibration Date	EX3DV4 - SN7810 2024-05-08	Phantom	Twin-SAM V8.0 (30deg probe tilt)
DAE Calibration Date	DAE4 Sn1787 2024-05-02	TSL Type	HBBL-600-10000
Software Version	16.2.4.2524		

Scans Setup

	Area Scan	Zoom Scan
Grid Extents [mm]	51.0 x 85.0	22.0 x 22.0 x 22.0
Grid Steps [mm]	8.5 x 8.5	3.4 x 3.4 x 1.4
Sensor Surface [mm]	3.0	1.4
Graded Grid	N/A	Yes
M2/M1 [%]		50.4
Dist 3dB Peak [mm]		4.9

Measurement Results

	Area Scan	Zoom Scan	APD
psSAR1g [W/Kg]	19.9	24.0	N/A
psSAR8g [W/Kg]	4.54	5.38	N/A
psSAR10g [W/Kg]	3.76	4.41	N/A
psAPD (4.0cm ² , sq.) [W/m ²]	N/A	N/A	108
Power Drift [dB]	N/A	0.03	N/A

