

**Band n53: 5G NR (DFT-s-OFDM, 1 RB, 10 MHz, QPSK, 30 kHz) RBPosition:Low
AntennaCfg:SISO, EDGE LEFT**

Exposure Conditions

Band	Band n53	TSL Permittivity	40.4
Frequency [MHz] Channel Number	2489.300 497860	TSL Conductivity [S/m]	1.78
Group UID	5G NR FR1 TDD 10898-AAC	Phantom Section TSL	Flat HSL
Conversion Factor	7.66	Test Distance [mm]	5.00

Hardware Setup

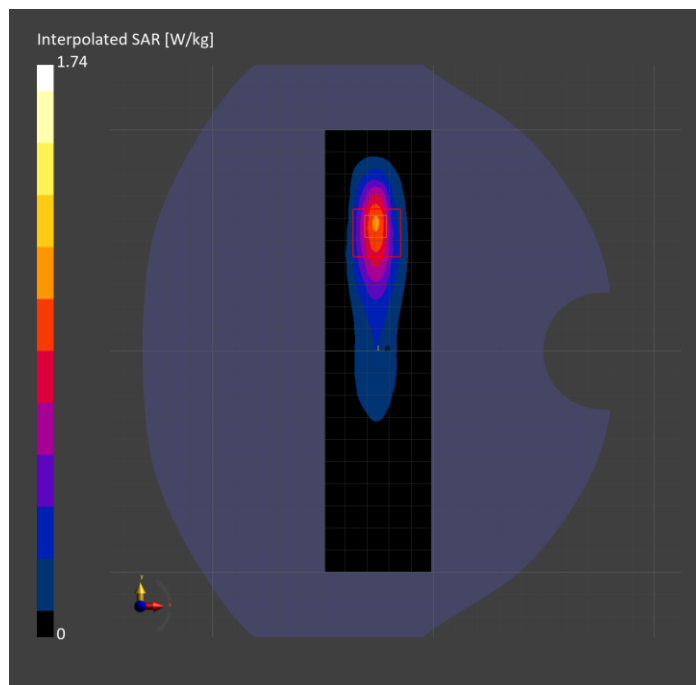
Probe Calibration Date	EX3DV4 - SN7709 2023-11-30	Phantom	Twin-SAM V8.0 (30deg probe tilt)
DAE Calibration Date	DAE4 Sn1714 2023-11-22	TSL Type	HBBL-600-10000
Software Version	16.2.4.2524		

Scan Setup

	Area Scan	Zoom Scan
Grid Extents [mm]	48.0 x 200.0	30.0 x 30.0 x 30.0
Grid Steps [mm]	8.0 x 10.0	5.0 x 5.0 x 1.5
Sensor Surface [mm]	3.0	1.4
Graded Grid	N/A	Yes
M2/M1 [%]		79.2
Dist 3dB Peak [mm]		7.0
Peak SAR [W/kg] SAR Peak Location [mm]	N/A	1.74 [-26.3, 60.5, -207.0]

Measurement Results

	Area Scan	Zoom Scan
psSAR1g [W/Kg]	0.761	0.803
psSAR10g [W/Kg]	0.333	0.351
Power Drift [dB]	N/A	0.00



MSS: 1-PRB SC-FDMA, EDGE RIGHT

Exposure Conditions

Band	MSS	TSL Permittivity	42.8
Frequency [MHz] Channel Number	1617.600 262391	TSL Conductivity [S/m]	1.24
Group UID	CW 0--	Phantom Section TSL	Flat HSL
Conversion Factor	8.51	Test Distance [mm]	0.00

Hardware Setup

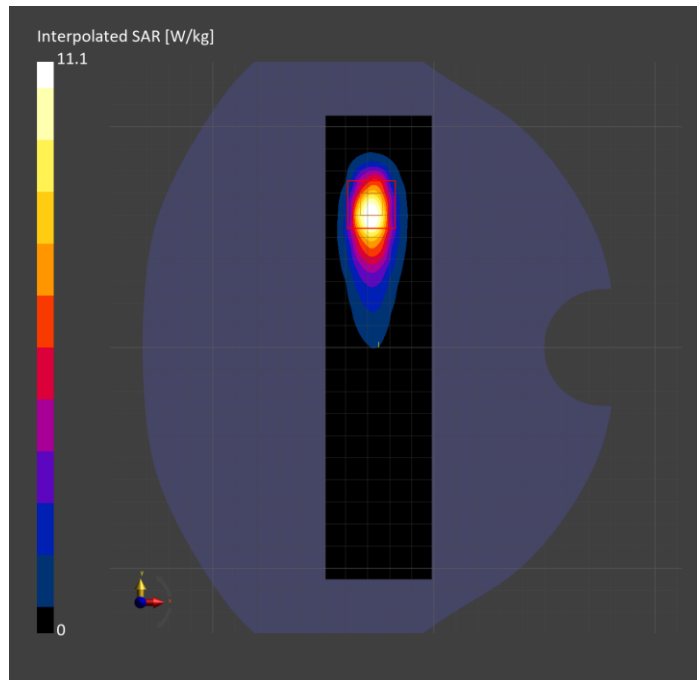
Probe Calibration Date	EX3DV4 - SN3989 2024-01-09	Phantom	Twin-SAM V8.0 (30deg probe tilt)
DAE Calibration Date	DAE4 Sn1433 2024-02-08	TSL Type	HBBL-600-10000
Software Version	16.2.4.2524		

Scan Setup

	Area Scan	Zoom Scan
Grid Extents [mm]	48.0 x 210.0	30.0 x 30.0 x 30.0
Grid Steps [mm]	8.0 x 15.0	3.8 x 3.8 x 1.4
Sensor Surface [mm]	3.0	1.4
Graded Grid	N/A	Yes
M2/M1 [%]		66.9
Dist 3dB Peak [mm]		4.9
Peak SAR [W/kg] SAR Peak Location [mm]	N/A	11.1 [-28.4, 69.2, -207.0]

Measurement Results

	Area Scan	Zoom Scan
psSAR1g [W/Kg]	2.89	3.35
psSAR10g [W/Kg]	1.34	1.30
Power Drift [dB]	0.05	-0.06



Band 4: UMTS-FDD (WCDMA), EDGE BOTTOM

Exposure Conditions

Band	Band 4	TSL Permittivity	42.7
Frequency [MHz] Channel Number	1712.400 1312	TSL Conductivity [S/m]	1.30
Group UID	WCDMA 10011-CAC	Phantom Section TSL	Flat HSL
Conversion Factor	8.98	Test Distance [mm]	5.00

Hardware Setup

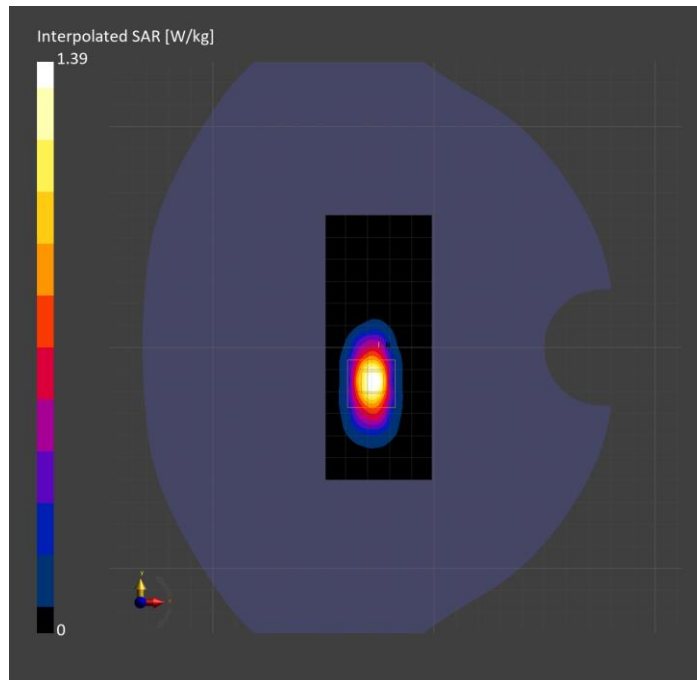
Probe Calibration Date	EX3DV4 - SN3989 2024-01-09	Phantom	Twin-SAM V8.0 (30deg probe tilt)
DAE Calibration Date	DAE4 Sn1433 2024-02-08	TSL Type	HBBL-600-10000
Software Version	16.2.4.2524		

Scan Setup

	Area Scan	Zoom Scan
Grid Extents [mm]	48.0 x 120.0	30.0 x 30.0 x 30.0
Grid Steps [mm]	8.0 x 15.0	5.5 x 5.5 x 1.5
Sensor Surface [mm]	3.0	1.4
Graded Grid	N/A	Yes
M2/M1 [%]		81.3
Dist 3dB Peak [mm]		6.6
Peak SAR [W/kg] SAR Peak Location [mm]	N/A	1.39 [-28.3, -14.6, -209.6]

Measurement Results

	Area Scan	Zoom Scan
psSAR1g [W/Kg]	0.659	0.668
psSAR10g [W/Kg]	0.290	0.288
Power Drift [dB]	-0.01	0.00



Band n48: 5G NR (DFT-s-OFDM, 50% RB, 40 MHz, QPSK, 30 kHz) RBPosition:Mid AntennaCfg:SISO, BACK

Exposure Conditions

Band	Band n48	TSL Permittivity	38.8
Frequency [MHz] Channel Number	3643.345 642890	TSL Conductivity [S/m]	2.86
Group UID	5G NR FR1 TDD 10913-AAD	Phantom Section TSL	Flat HSL
Conversion Factor	6.88	Test Distance [mm]	5.00

Hardware Setup

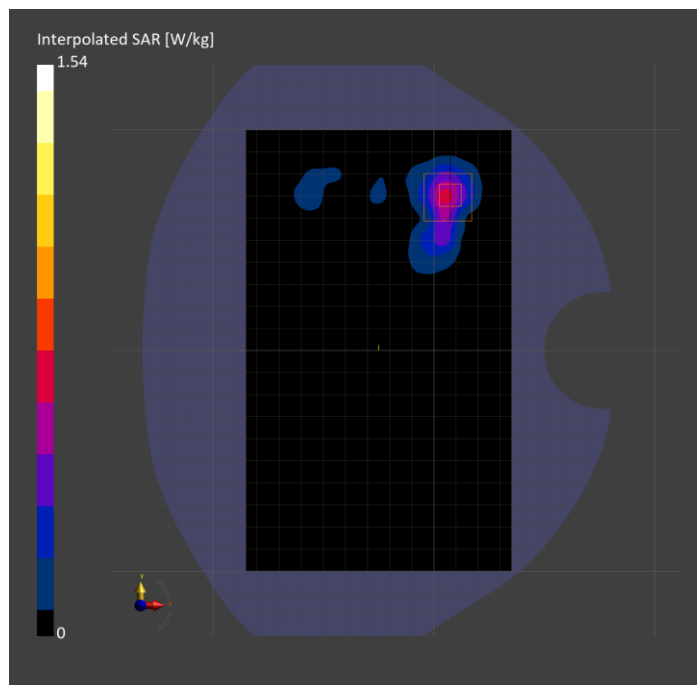
Probe Calibration Date	EX3DV4 - SN7335 2024-01-09	Phantom	Twin-SAM V8.0 (30deg probe tilt)
DAE Calibration Date	DAE4ip Sn1619 2024-04-11	TSL Type	HBBL-600-10000
Software Version	16.2.4.2524		

Scan Setup

	Area Scan	Zoom Scan
Grid Extents [mm]	120.0 x 200.0	28.0 x 28.0 x 28.0
Grid Steps [mm]	10.0 x 10.0	5.0 x 5.0 x 1.4
Sensor Surface [mm]	3.0	1.4
Graded Grid	N/A	Yes
M2/M1 [%]		74.5
Dist 3dB Peak [mm]		7.3
Peak SAR [W/kg] SAR Peak Location [mm]	N/A	1.54 [7.5, 71.5, -207.0]

Measurement Results

	Area Scan	Zoom Scan
psSAR1g [W/Kg]	0.492	0.557
psSAR10g [W/Kg]	0.188	0.204
Power Drift [dB]	N/A	0.01



WLAN 2.4GHz: IEEE 802.11b WiFi 2.4 GHz (DSSS, 1 Mbps, 99pc duty cycle), EDGE LEFT

Exposure Conditions

Band	WLAN 2.4GHz	TSL Permittivity	40.6
Frequency [MHz] Channel Number	2437.000 6	TSL Conductivity [S/m]	1.72
Group UID	WLAN 10415-AAA	Phantom Section TSL	Flat HSL
Conversion Factor	6.96	Test Distance [mm]	5.00

Hardware Setup

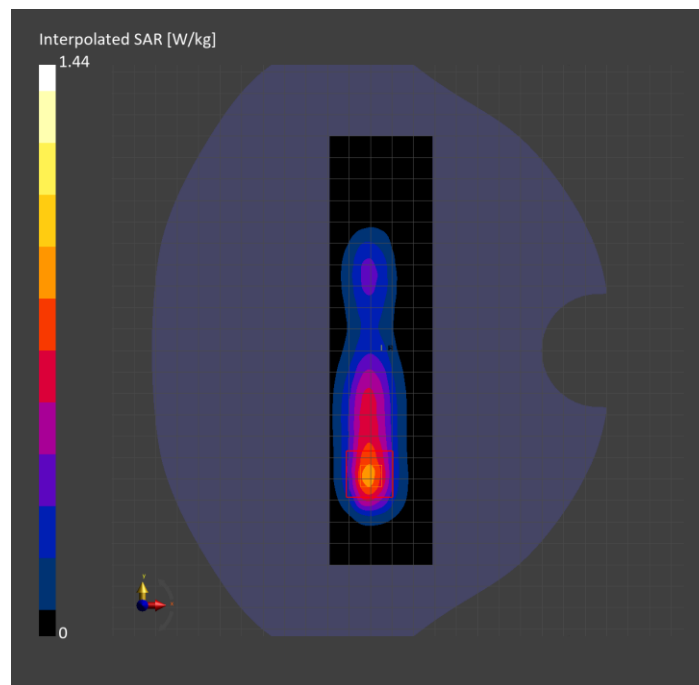
Probe Calibration Date	EX3DV4 - SN7820 2024-05-10	Phantom	Twin-SAM V8.0 (30deg probe tilt)
DAE Calibration Date	DAE4 Sn1544 2024-01-16	TSL Type	HBBL-600-10000
Software Version	16.2.4.2524		

Scan Setup

	Area Scan	Zoom Scan
Grid Extents [mm]	48.0 x 200.0	30.0 x 30.0 x 30.0
Grid Steps [mm]	8.0 x 10.0	5.0 x 5.0 x 1.5
Sensor Surface [mm]	3.0	1.4
Graded Grid	N/A	Yes
M2/M1 [%]		80.5
Dist 3dB Peak [mm]		8.0
Peak SAR [W/kg] SAR Peak Location [mm]	N/A	1.44 [-29.1, -60.5, -207.0]

Measurement Results

	Area Scan	Zoom Scan
psSAR1g [W/Kg]	0.689	0.711
psSAR10g [W/Kg]	0.326	0.332
Power Drift [dB]	-0.02	-0.02



WLAN 5GHz: IEEE 802.11ac WiFi (160MHz, MCS0, 99pc duty cycle), BACK

Exposure Conditions

Band	WLAN 5GHz	TSL Permittivity	35.4
Frequency [MHz] Channel Number	5570.000 114	TSL Conductivity [S/m]	4.88
Group UID	WLAN 10554-AAE	Phantom Section TSL	Flat HSL
Conversion Factor	4.93	Test Distance [mm]	5.00

Hardware Setup

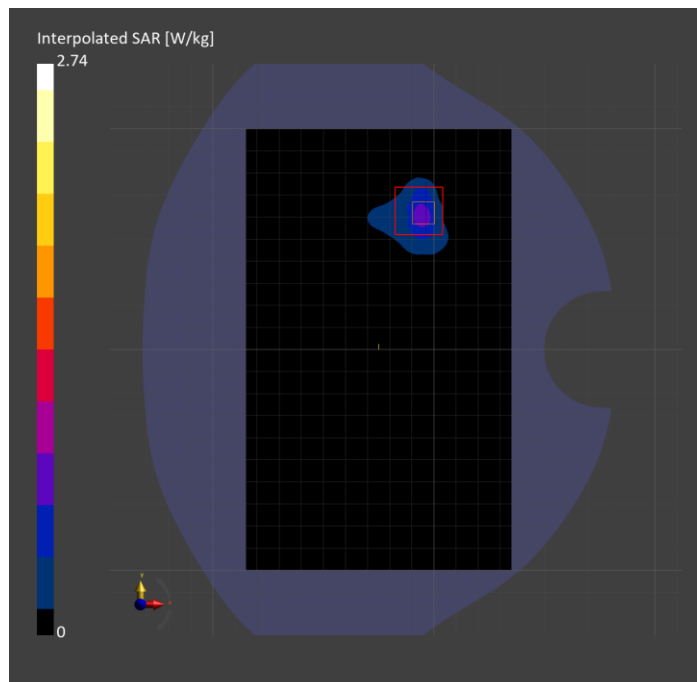
Probe Calibration Date	EX3DV4 - SN3902 2024-03-12	Phantom	Twin-SAM V5.0 (30deg probe tilt)
DAE Calibration Date	DAE4 Sn1799 2023-04-04	TSL Type	HBBL-600-10000
Software Version	16.2.4.2524		

Scan Setup

	Area Scan	Zoom Scan
Grid Extents [mm]	120.0 x 200.0	22.0 x 22.0 x 22.0
Grid Steps [mm]	10.0 x 10.0	4.0 x 4.0 x 1.4
Sensor Surface [mm]	3.0	1.4
Graded Grid	N/A	Yes
M2/M1 [%]		61.5
Dist 3dB Peak [mm]		6.4
Peak SAR [W/kg] SAR Peak Location [mm]	N/A	2.74 [-3.6, 63.7, -207.0]

Measurement Results

	Area Scan	Zoom Scan
psSAR1g [W/Kg]	0.567	0.669
psSAR10g [W/Kg]	0.182	0.203
Power Drift [dB]	0.02	0.20



ISM 2.4 GHz Band: IEEE 802.15.1 Bluetooth (GFSK, DH5), EDGE LEFT

Exposure Conditions

Band	ISM 2.4 GHz Band	TSL Permittivity	39.6
Frequency [MHz] Channel Number	2441.000 39	TSL Conductivity [S/m]	1.72
Group UID	Bluetooth 10032-CAA	Phantom Section TSL	Flat HSL
Conversion Factor	7.18	Test Distance [mm]	5.00

Hardware Setup

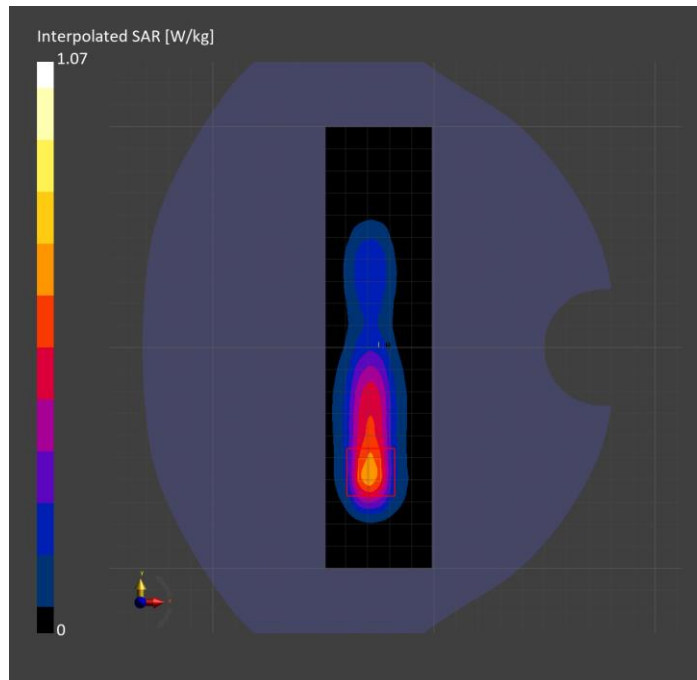
Probe Calibration Date	EX3DV4 - SN3772 2024-02-07	Phantom	Twin-SAM V8.0 (30deg probe tilt)
DAE Calibration Date	DAE4 Sn1258 2024-03-12	TSL Type	HBBL-600-10000
Software Version	16.2.4.2524		

Scan Setup

	Area Scan	Zoom Scan
Grid Extents [mm]	48.0 x 200.0	30.0 x 30.0 x 30.0
Grid Steps [mm]	8.0 x 10.0	5.0 x 5.0 x 1.5
Sensor Surface [mm]	3.0	1.4
Graded Grid	N/A	Yes
M2/M1 [%]		79.5
Dist 3dB Peak [mm]		7.7
Peak SAR [W/kg] SAR Peak Location [mm]	N/A	1.07 [-29.5, -59.0, -207.0]

Measurement Results

	Area Scan	Zoom Scan
psSAR1g [W/Kg]	0.529	0.508
psSAR10g [W/Kg]	0.245	0.230
Power Drift [dB]	0.01	-0.01



NFC: Type A, EDGE TOP

Exposure Conditions

Band	NFC	TSL Permittivity	52.8
Frequency [MHz] Channel Number	13.600 N/A	TSL Conductivity [S/m]	0.702
Group UID	CW 0--	Phantom Section TSL	Flat HSL
Conversion Factor	17.98	Test Distance [mm]	0.00

Hardware Setup

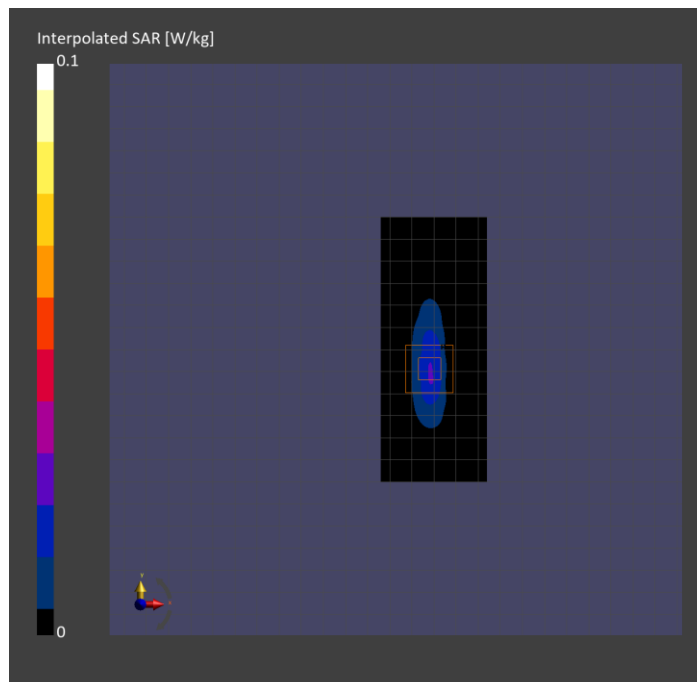
Probe Calibration Date	EX3DV4 - SN3991 2023-10-12	Phantom	ELI V5.0 (20deg probe tilt)
DAE Calibration Date	DAE4 Sn1380 2024-02-09	TSL Type	HBBL-600-10000
Software Version	16.2.4.2524		

Scan Setup

	Area Scan	Zoom Scan
Grid Extents [mm]	48.0 x 120.0	30.0 x 30.0 x 30.0
Grid Steps [mm]	8.0 x 15.0	4.2 x 4.2 x 1.4
Sensor Surface [mm]	3.0	1.4
Graded Grid	N/A	Yes
M2/M1 [%]		61.9
Dist 3dB Peak [mm]		4.2
Peak SAR [W/kg] SAR Peak Location [mm]	N/A	0.087 [-1.4, -7.8, -177.0]

Measurement Results

	Area Scan	Zoom Scan
psSAR1g [W/Kg]	0.022	0.021
psSAR10g [W/Kg]	0.013	0.007
Power Drift [dB]	N/A	0.02



U-NII-8: IEEE 802.11ax (160MHz, MCS0, 99pc duty cycle), BACK

Exposure Conditions

Band	U-NII-8	TSL Permittivity	32.4
Frequency [MHz] Channel Number	6985.000 207	TSL Conductivity [S/m]	6.76
Group UID	WLAN 10755-AAC	Phantom Section TSL	Flat HSL
Conversion Factor	5.35	Test Distance [mm]	5.00

Hardware Setup

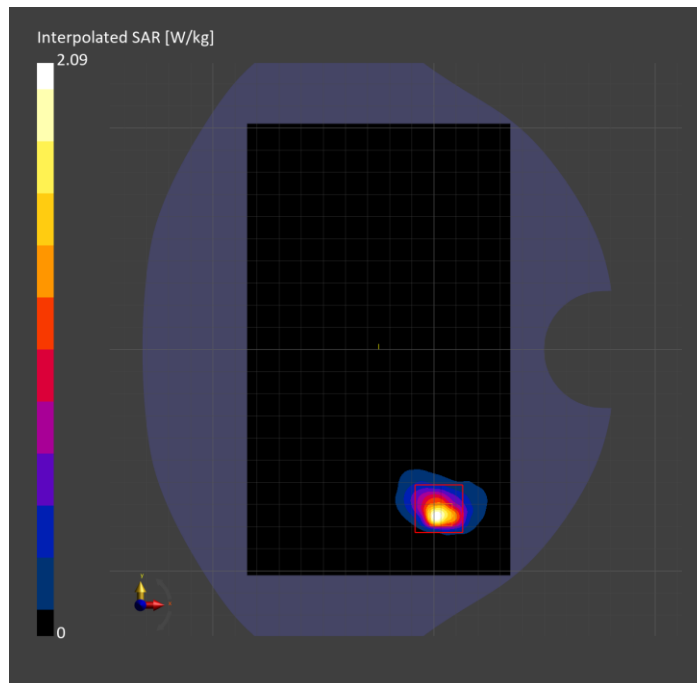
Probe Calibration Date	EX3DV4 - SN7501 2024-03-14	Phantom	Twin-SAM V8.0 (30deg probe tilt)
DAE Calibration Date	DAE4 Sn1357 2024-01-09	TSL Type	HBBL-600-10000
Software Version	16.2.4.2524		

Scan Setup

	Area Scan	Zoom Scan
Grid Extents [mm]	119.0 x 204.0	22.0 x 22.0 x 22.0
Grid Steps [mm]	8.5 x 8.5	3.4 x 3.4 x 1.4
Sensor Surface [mm]	3.0	1.4
Graded Grid	N/A	Yes
M2/M1 [%]		48.8
Dist 3dB Peak [mm]		4.6
Peak SAR [W/kg] SAR Peak Location [mm]	N/A	2.09 [3.2, -74.8, -207.0]

Measurement Results

	Area Scan	Zoom Scan	APD
psSAR1g [W/Kg]	0.260	0.327	N/A
psSAR8g [W/Kg]	0.080	0.089	N/A
psSAR10g [W/Kg]	0.068	0.075	N/A
psAPD (4.0cm ² , sq.) [W/m ²]	N/A	N/A	1.78
Power Drift [dB]	N/A	-0.16	-0.16



**Band n53: 5G NR (DFT-s-OFDM, 1 RB, 10 MHz, QPSK, 30 kHz) RBPosition:Low
AntennaCfg:SISO, EDGE LEFT**

Exposure Conditions

Band	Band n53	TSL Permittivity	40.5
Frequency [MHz] Channel Number	2489.300 497860	TSL Conductivity [S/m]	1.83
Group UID	5G NR FR1 TDD 10898-AAC	Phantom Section TSL	Flat HSL
Conversion Factor	7.66	Test Distance [mm]	5.00

Hardware Setup

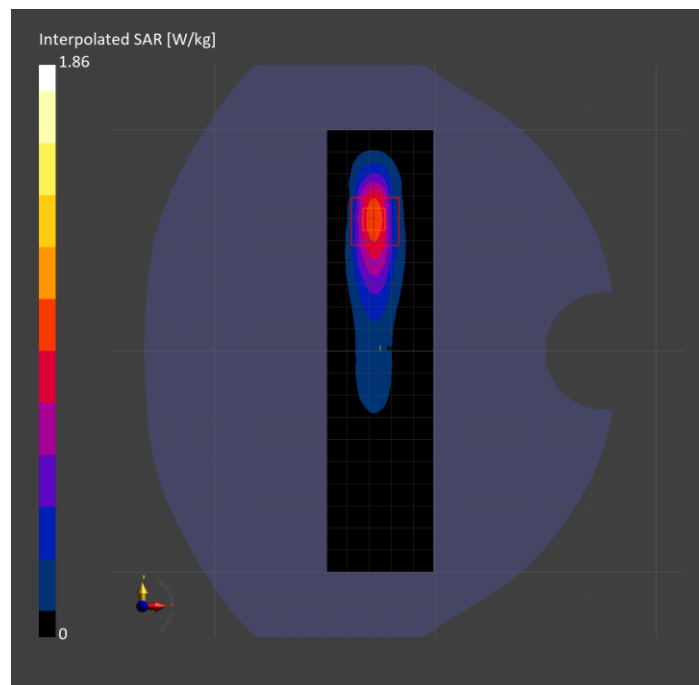
Probe Calibration Date	EX3DV4 - SN7709 2023-11-30	Phantom	Twin-SAM V8.0 (30deg probe tilt)
DAE Calibration Date	DAE4 Sn1714 2023-11-22	TSL Type	HBBL-600-10000
Software Version	16.2.4.2524		

Scan Setup

	Area Scan	Zoom Scan
Grid Extents [mm]	48.0 x 200.0	30.0 x 30.0 x 30.0
Grid Steps [mm]	8.0 x 10.0	5.0 x 5.0 x 1.5
Sensor Surface [mm]	3.0	1.4
Graded Grid	N/A	Yes
M2/M1 [%]		78.6
Dist 3dB Peak [mm]		7.0
Peak SAR [W/kg] SAR Peak Location [mm]	N/A	1.86 [-27.9, 65.5, -207.0]

Measurement Results

	Area Scan	Zoom Scan
psSAR1g [W/Kg]	0.805	0.831
psSAR10g [W/Kg]	0.354	0.363
Power Drift [dB]	N/A	-0.02



MSS: 1-PRB SC-FDMA, EDGE RIGHT

Exposure Conditions

Band	MSS	TSL Permittivity	42.8
Frequency [MHz] Channel Number	1617.600 262391	TSL Conductivity [S/m]	1.24
Group UID	CW 0--	Phantom Section TSL	Flat HSL
Conversion Factor	8.51	Test Distance [mm]	0.00

Hardware Setup

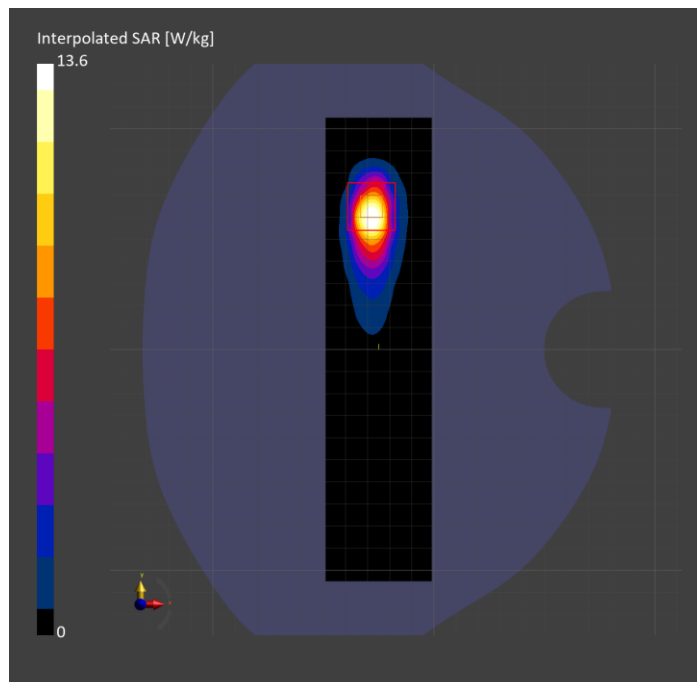
Probe Calibration Date	EX3DV4 - SN3989 2024-01-09	Phantom	Twin-SAM V8.0 (30deg probe tilt)
DAE Calibration Date	DAE4 Sn1433 2024-02-08	TSL Type	HBBL-600-10000
Software Version	16.2.4.2524		

Scan Setup

	Area Scan	Zoom Scan
Grid Extents [mm]	48.0 x 210.0	30.0 x 30.0 x 30.0
Grid Steps [mm]	8.0 x 15.0	3.5 x 3.5 x 1.4
Sensor Surface [mm]	3.0	1.4
Graded Grid	N/A	Yes
M2/M1 [%]		65.9
Dist 3dB Peak [mm]		4.5
Peak SAR [W/kg] SAR Peak Location [mm]	N/A	13.6 [-27.9, 68.0, -207.0]

Measurement Results

	Area Scan	Zoom Scan
psSAR1g [W/Kg]	3.25	3.86
psSAR10g [W/Kg]	1.46	1.41
Power Drift [dB]	-0.00	0.05



Band 4: UMTS-FDD (WCDMA), EDGE BOTTOM

Exposure Conditions

Band	Band 4	TSL Permittivity	42.7
Frequency [MHz] Channel Number	1712.400 1312	TSL Conductivity [S/m]	1.30
Group UID	WCDMA 10011-CAC	Phantom Section TSL	Flat HSL
Conversion Factor	8.98	Test Distance [mm]	5.00

Hardware Setup

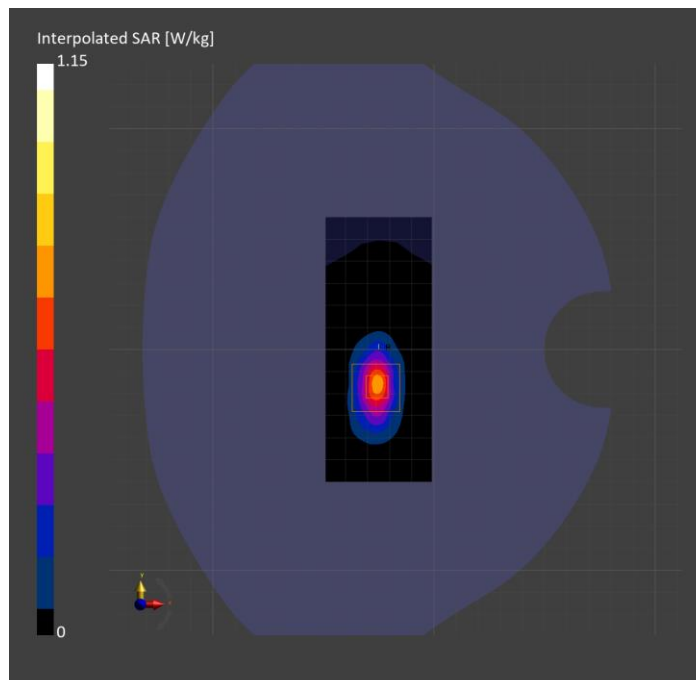
Probe Calibration Date	EX3DV4 - SN3989 2024-01-09	Phantom	Twin-SAM V8.0 (30deg probe tilt)
DAE Calibration Date	DAE4 Sn1433 2024-02-08	TSL Type	HBBL-600-10000
Software Version	16.2.4.2524		

Scan Setup

	Area Scan	Zoom Scan
Grid Extents [mm]	48.0 x 120.0	30.0 x 30.0 x 30.0
Grid Steps [mm]	8.0 x 15.0	5.5 x 5.5 x 1.5
Sensor Surface [mm]	3.0	1.4
Graded Grid	N/A	Yes
M2/M1 [%]		80.9
Dist 3dB Peak [mm]		6.6
Peak SAR [W/kg] SAR Peak Location [mm]	N/A	1.15 [-26.2, -15.6, -209.5]

Measurement Results

	Area Scan	Zoom Scan
psSAR1g [W/Kg]	0.532	0.546
psSAR10g [W/Kg]	0.230	0.234
Power Drift [dB]	-0.04	-0.01



Band n48: 5G NR (DFT-s-OFDM, 50% RB, 40 MHz, QPSK, 30 kHz) RBPosition:Mid AntennaCfg:SISO, BACK

Exposure Conditions

Band	Band n48	TSL Permittivity	38.8
Frequency [MHz] Channel Number	3643.345 642890	TSL Conductivity [S/m]	2.86
Group UID	5G NR FR1 TDD 10913-AAD	Phantom Section TSL	Flat HSL
Conversion Factor	6.88	Test Distance [mm]	5.00

Hardware Setup

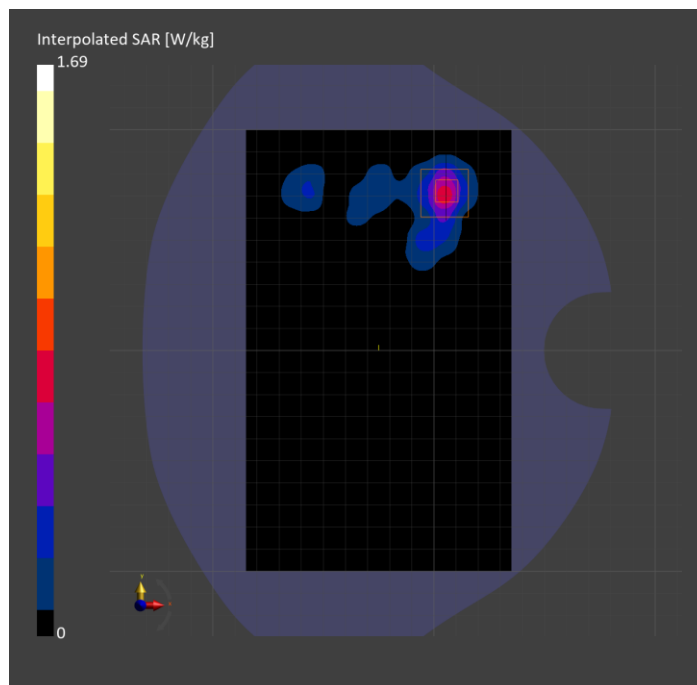
Probe Calibration Date	EX3DV4 - SN7335 2024-01-09	Phantom	Twin-SAM V8.0 (30deg probe tilt)
DAE Calibration Date	DAE4ip Sn1619 2024-04-11	TSL Type	HBBL-600-10000
Software Version	16.2.4.2524		

Scan Setup

	Area Scan	Zoom Scan
Grid Extents [mm]	120.0 x 200.0	28.0 x 28.0 x 28.0
Grid Steps [mm]	10.0 x 10.0	5.0 x 5.0 x 1.4
Sensor Surface [mm]	3.0	1.4
Graded Grid	N/A	Yes
M2/M1 [%]		74.7
Dist 3dB Peak [mm]		7.1
Peak SAR [W/kg] SAR Peak Location [mm]	N/A	1.69 [5.5, 73.0, -207.0]

Measurement Results

	Area Scan	Zoom Scan
psSAR1g [W/Kg]	0.555	0.603
psSAR10g [W/Kg]	0.201	0.211
Power Drift [dB]	N/A	0.06



WLAN 2.4GHz: IEEE 802.11b WiFi 2.4 GHz (DSSS, 1 Mbps, 99pc duty cycle), EDGE LEFT

Exposure Conditions

Band	WLAN 2.4GHz	TSL Permittivity	40.6
Frequency [MHz] Channel Number	2437.000 6	TSL Conductivity [S/m]	1.72
Group UID	WLAN 10415-AAA	Phantom Section TSL	Flat HSL
Conversion Factor	6.96	Test Distance [mm]	5.00

Hardware Setup

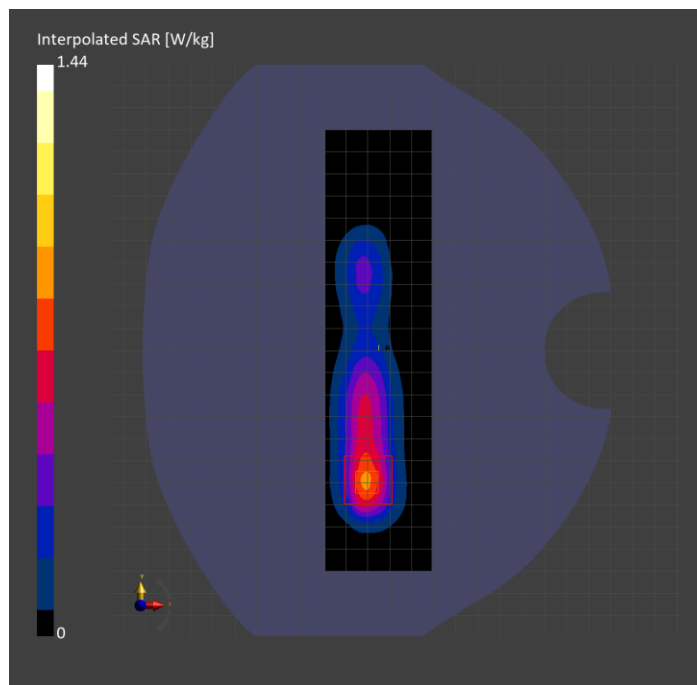
Probe Calibration Date	EX3DV4 - SN7820 2024-05-10	Phantom	Twin-SAM V8.0 (30deg probe tilt)
DAE Calibration Date	DAE4 Sn1544 2024-01-16	TSL Type	HBBL-600-10000
Software Version	16.2.4.2524		

Scan Setup

	Area Scan	Zoom Scan
Grid Extents [mm]	48.0 x 200.0	30.0 x 30.0 x 30.0
Grid Steps [mm]	8.0 x 10.0	5.0 x 5.0 x 1.5
Sensor Surface [mm]	3.0	1.4
Graded Grid	N/A	Yes
M2/M1 [%]		79.9
Dist 3dB Peak [mm]		8.0
Peak SAR [W/kg] SAR Peak Location [mm]	N/A	1.44 [-29.6, -61.5, -207.0]

Measurement Results

	Area Scan	Zoom Scan
psSAR1g [W/Kg]	0.670	0.699
psSAR10g [W/Kg]	0.317	0.324
Power Drift [dB]	0.24	-0.03



U-NII-2C < 5.65 GHz: IEEE 802.11ac WiFi (160MHz, MCS0, 99pc duty cycle), BACK

Exposure Conditions

Band	U-NII-2C < 5.65 GHz	TSL Permittivity	35.4
Frequency [MHz] Channel Number	5570.000 114	TSL Conductivity [S/m]	4.88
Group UID	WLAN 10554-AAE	Phantom Section TSL	Flat HSL
Conversion Factor	4.93	Test Distance [mm]	5.00

Hardware Setup

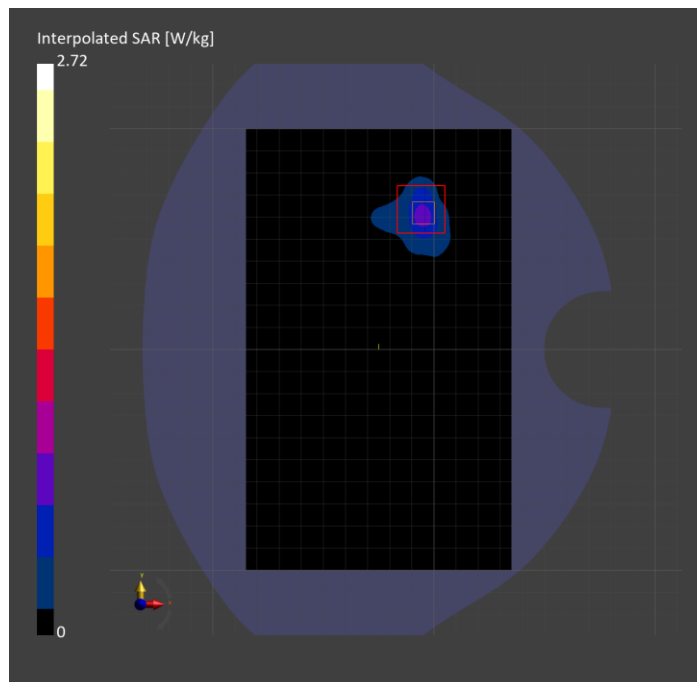
Probe Calibration Date	EX3DV4 - SN3902 2024-03-12	Phantom	Twin-SAM V5.0 (30deg probe tilt)
DAE Calibration Date	DAE4 Sn1799 2023-04-04	TSL Type	HBBL-600-10000
Software Version	16.2.4.2524		

Scan Setup

	Area Scan	Zoom Scan
Grid Extents [mm]	120.0 x 200.0	22.0 x 22.0 x 22.0
Grid Steps [mm]	10.0 x 10.0	4.0 x 4.0 x 1.4
Sensor Surface [mm]	3.0	1.4
Graded Grid	N/A	Yes
M2/M1 [%]		61.0
Dist 3dB Peak [mm]		5.7
Peak SAR [W/kg] SAR Peak Location [mm]	N/A	2.72 [-3.9, 62.9, -207.0]

Measurement Results

	Area Scan	Zoom Scan
psSAR1g [W/Kg]	0.555	0.652
psSAR10g [W/Kg]	0.179	0.196
Power Drift [dB]	0.02	0.11



ISM 2.4 GHz Band: IEEE 802.15.1 Bluetooth (GFSK, DH5), EDGE LEFT

Exposure Conditions

Band	ISM 2.4 GHz Band	TSL Permittivity	39.6
Frequency [MHz] Channel Number	2441.000 39	TSL Conductivity [S/m]	1.72
Group UID	Bluetooth 10032-CAA	Phantom Section TSL	Flat HSL
Conversion Factor	7.18	Test Distance [mm]	5.00

Hardware Setup

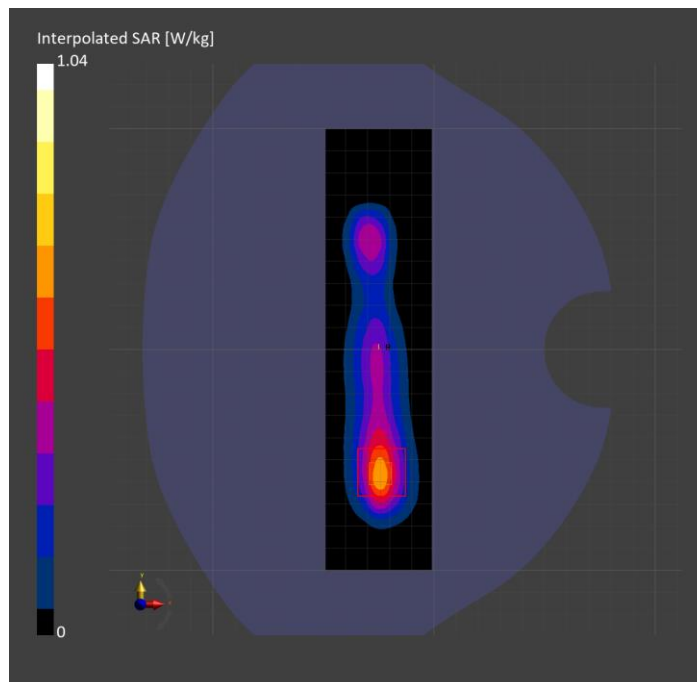
Probe Calibration Date	EX3DV4 - SN3772 2024-02-07	Phantom	Twin-SAM V8.0 (30deg probe tilt)
DAE Calibration Date	DAE4 Sn1258 2024-03-12	TSL Type	HBBL-600-10000
Software Version	16.2.4.2524		

Scan Setup

	Area Scan	Zoom Scan
Grid Extents [mm]	48.0 x 200.0	30.0 x 30.0 x 30.0
Grid Steps [mm]	8.0 x 10.0	5.0 x 5.0 x 1.5
Sensor Surface [mm]	3.0	1.4
Graded Grid	N/A	Yes
M2/M1 [%]		80.5
Dist 3dB Peak [mm]		8.1
Peak SAR [W/kg] SAR Peak Location [mm]	N/A	1.04 [-24.2, -59.0, -206.6]

Measurement Results

	Area Scan	Zoom Scan
psSAR1g [W/Kg]	0.509	0.509
psSAR10g [W/Kg]	0.235	0.236
Power Drift [dB]	-0.02	0.03



NFC: Type A, EDGE TOP

Exposure Conditions

Band	NFC	TSL Permittivity	52.8
Frequency [MHz] Channel Number	13.600 N/A	TSL Conductivity [S/m]	0.702
Group UID	CW 0--	Phantom Section TSL	Flat HSL
Conversion Factor	17.98	Test Distance [mm]	0.00

Hardware Setup

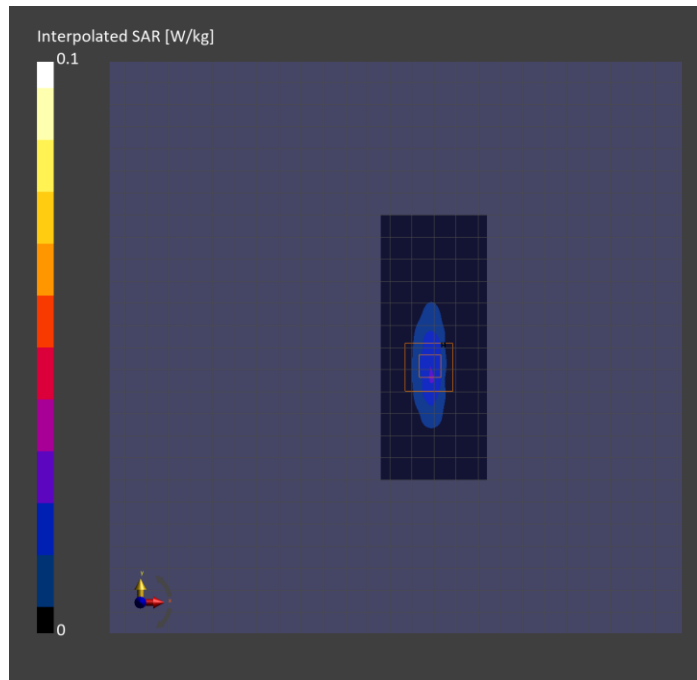
Probe Calibration Date	EX3DV4 - SN3991 2023-10-12	Phantom	ELI V5.0 (20deg probe tilt)
DAE Calibration Date	DAE4 Sn1380 2024-02-09	TSL Type	HBBL-600-10000
Software Version	16.2.4.2524		

Scan Setup

	Area Scan	Zoom Scan
Grid Extents [mm]	48.0 x 120.0	30.0 x 30.0 x 30.0
Grid Steps [mm]	8.0 x 15.0	3.8 x 3.8 x 1.4
Sensor Surface [mm]	3.0	1.4
Graded Grid	N/A	Yes
M2/M1 [%]		58.9
Dist 3dB Peak [mm]		5.4
Peak SAR [W/kg] SAR Peak Location [mm]	N/A	0.082 [-2.0, -11.3, -180.8]

Measurement Results

	Area Scan	Zoom Scan
psSAR1g [W/Kg]	0.022	0.020
psSAR10g [W/Kg]	0.012	0.007
Power Drift [dB]	N/A	0.17



U-NII-8: IEEE 802.11ax (160MHz, MCS0, 99pc duty cycle), BACK

Exposure Conditions

Band	U-NII-8	TSL Permittivity	32.4
Frequency [MHz] Channel Number	6985.000 207	TSL Conductivity [S/m]	6.44
Group UID	WLAN 10755-AAC	Phantom Section TSL	Flat HSL
Conversion Factor	5.35	Test Distance [mm]	5.00

Hardware Setup

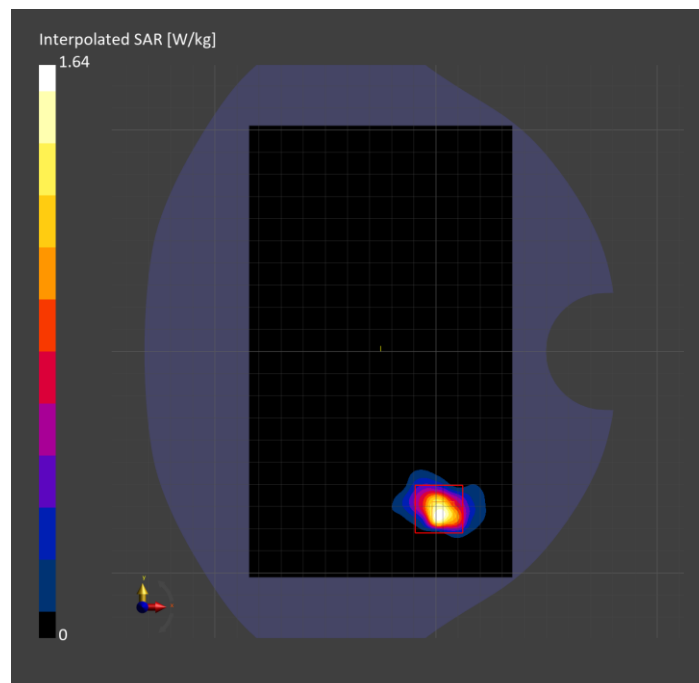
Probe Calibration Date	EX3DV4 - SN7501 2024-03-14	Phantom	Twin-SAM V8.0 (30deg probe tilt)
DAE Calibration Date	DAE4 Sn1357 2024-01-09	TSL Type	HBBL-600-10000
Software Version	16.2.4.2524		

Scan Setup

	Area Scan	Zoom Scan
Grid Extents [mm]	119.0 x 204.0	22.0 x 22.0 x 22.0
Grid Steps [mm]	8.5 x 8.5	2.7 x 2.7 x 1.2
Sensor Surface [mm]	3.0	1.4
Graded Grid	N/A	Yes
M2/M1 [%]		52.5
Dist 3dB Peak [mm]		4.9
Peak SAR [W/kg] SAR Peak Location [mm]	N/A	1.64 [3.1, -73.1, -207.0]

Measurement Results

	Area Scan	Zoom Scan	APD
psSAR1g [W/Kg]	0.205	0.256	N/A
psSAR8g [W/Kg]	0.064	0.069	N/A
psSAR10g [W/Kg]	0.055	0.058	N/A
psAPD (4.0cm ² , sq.) [W/m ²]	N/A	N/A	1.38
Power Drift [dB]	N/A	-0.05	-0.05



Band 4: UMTS-FDD (WCDMA), EDGE BOTTOM

Exposure Conditions

Band	Band 4	TSL Permittivity	42.7
Frequency [MHz] Channel Number	1712.400 1312	TSL Conductivity [S/m]	1.30
Group UID	WCDMA 10011-CAC	Phantom Section TSL	Flat HSL
Conversion Factor	8.98	Test Distance [mm]	5.00

Hardware Setup

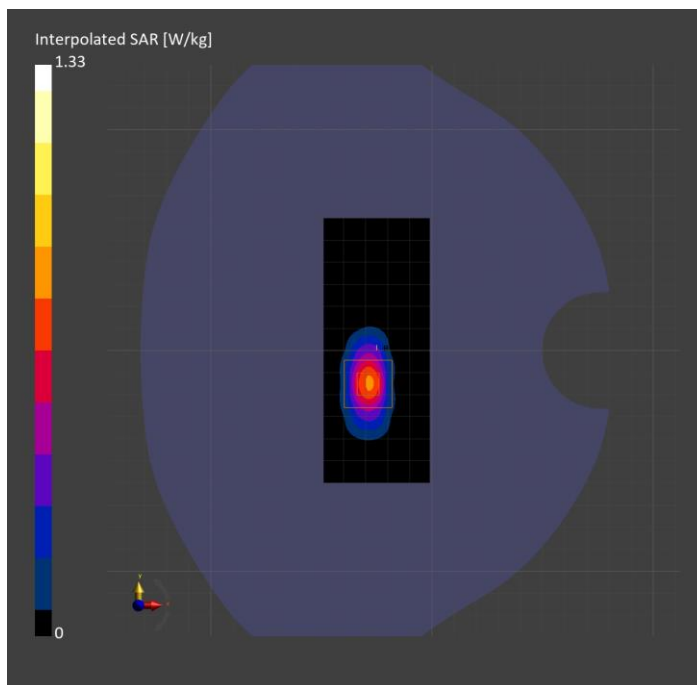
Probe Calibration Date	EX3DV4 - SN3989 2024-01-09	Phantom	Twin-SAM V8.0 (30deg probe tilt)
DAE Calibration Date	DAE4 Sn1433 2024-02-08	TSL Type	HBBL-600-10000
Software Version	16.2.4.2524		

Scan Setup

	Area Scan	Zoom Scan
Grid Extents [mm]	48.0 x 120.0	30.0 x 30.0 x 30.0
Grid Steps [mm]	8.0 x 15.0	5.5 x 5.5 x 1.5
Sensor Surface [mm]	3.0	1.4
Graded Grid	N/A	Yes
M2/M1 [%]		82.1
Dist 3dB Peak [mm]		6.6
Peak SAR [W/kg] SAR Peak Location [mm]	N/A	1.34 [-28.0, -14.1, -207.0]

Measurement Results

	Area Scan	Zoom Scan
psSAR1g [W/Kg]	0.625	0.644
psSAR10g [W/Kg]	0.277	0.279
Power Drift [dB]	0.01	0.01



Band n48: 5G NR (DFT-s-OFDM, 50% RB, 40 MHz, QPSK, 30 kHz) RBPosition:Mid AntennaCfg:SISO, BACK

Exposure Conditions

Band	Band n48	TSL Permittivity	38.8
Frequency [MHz] Channel Number	3643.345 642890	TSL Conductivity [S/m]	2.86
Group UID	5G NR FR1 TDD 10913-AAD	Phantom Section TSL	Flat HSL
Conversion Factor	6.88	Test Distance [mm]	5.00

Hardware Setup

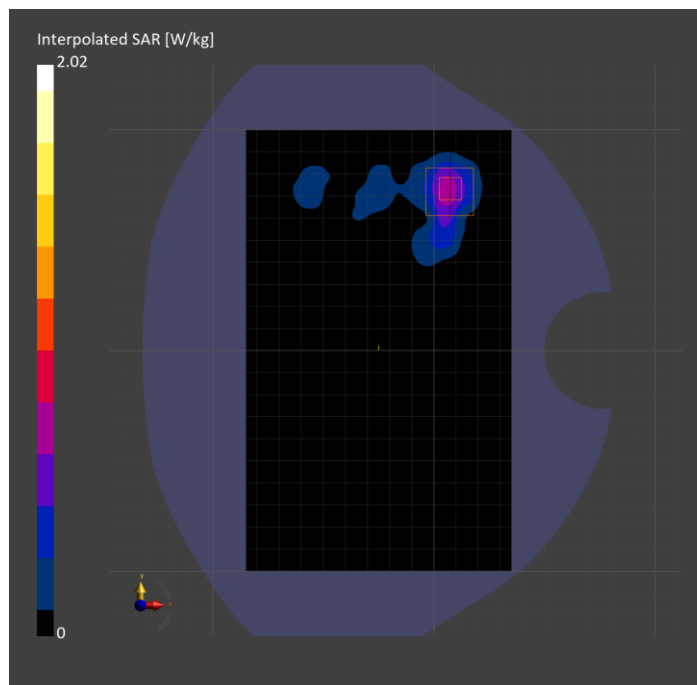
Probe Calibration Date	EX3DV4 - SN7335 2024-01-09	Phantom	Twin-SAM V8.0 (30deg probe tilt)
DAE Calibration Date	DAE4ip Sn1619 2024-04-11	TSL Type	HBBL-600-10000
Software Version	16.2.4.2524		

Scan Setup

	Area Scan	Zoom Scan
Grid Extents [mm]	120.0 x 200.0	28.0 x 28.0 x 28.0
Grid Steps [mm]	10.0 x 10.0	5.0 x 5.0 x 1.4
Sensor Surface [mm]	3.0	1.4
Graded Grid	N/A	Yes
M2/M1 [%]		74.5
Dist 3dB Peak [mm]		7.7
Peak SAR [W/kg] SAR Peak Location [mm]	N/A	2.02 [7.5, 74.0, -207.0]

Measurement Results

	Area Scan	Zoom Scan
psSAR1g [W/Kg]	0.579	0.713
psSAR10g [W/Kg]	0.229	0.248
Power Drift [dB]	N/A	-0.04



WLAN 2.4GHz: IEEE 802.11b WiFi 2.4 GHz (DSSS, 1 Mbps, 99pc duty cycle), EDGE LEFT

Exposure Conditions

Band	WLAN 2.4GHz	TSL Permittivity	40.6
Frequency [MHz] Channel Number	2437.000 6	TSL Conductivity [S/m]	1.72
Group UID	WLAN 10415-AAA	Phantom Section TSL	Flat HSL
Conversion Factor	6.96	Test Distance [mm]	5.00

Hardware Setup

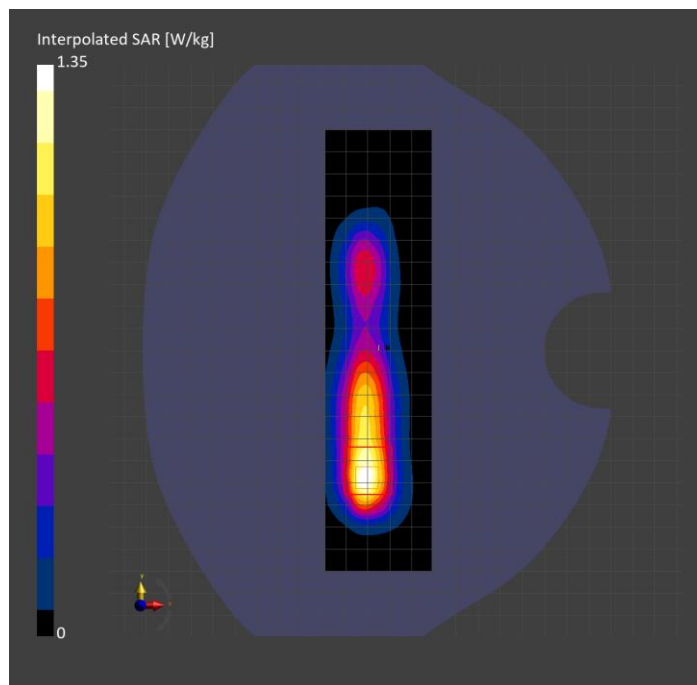
Probe Calibration Date	EX3DV4 - SN7820 2024-05-10	Phantom	Twin-SAM V8.0 (30deg probe tilt)
DAE Calibration Date	DAE4 Sn1544 2024-01-16	TSL Type	HBBL-600-10000
Software Version	16.2.4.2524		

Scan Setup

	Area Scan	Zoom Scan
Grid Extents [mm]	48.0 x 200.0	30.0 x 30.0 x 30.0
Grid Steps [mm]	8.0 x 10.0	5.0 x 5.0 x 1.5
Sensor Surface [mm]	3.0	1.4
Graded Grid	N/A	Yes
M2/M1 [%]		80.0
Dist 3dB Peak [mm]		8.0
Peak SAR [W/kg] SAR Peak Location [mm]	N/A	1.35 [-29.9, -60.5, -207.0]

Measurement Results

	Area Scan	Zoom Scan
psSAR1g [W/Kg]	0.601	0.651
psSAR10g [W/Kg]	0.286	0.307
Power Drift [dB]	0.01	-0.00



U-NII-2C < 5.65 GHz: IEEE 802.11ac WiFi (160MHz, MCS0, 99pc duty cycle), BACK

Exposure Conditions

Band	U-NII-2C < 5.65 GHz	TSL Permittivity	35.4
Frequency [MHz] Channel Number	5570.000 114	TSL Conductivity [S/m]	4.88
Group UID	WLAN 10554-AAE	Phantom Section TSL	Flat HSL
Conversion Factor	4.93	Test Distance [mm]	5.00

Hardware Setup

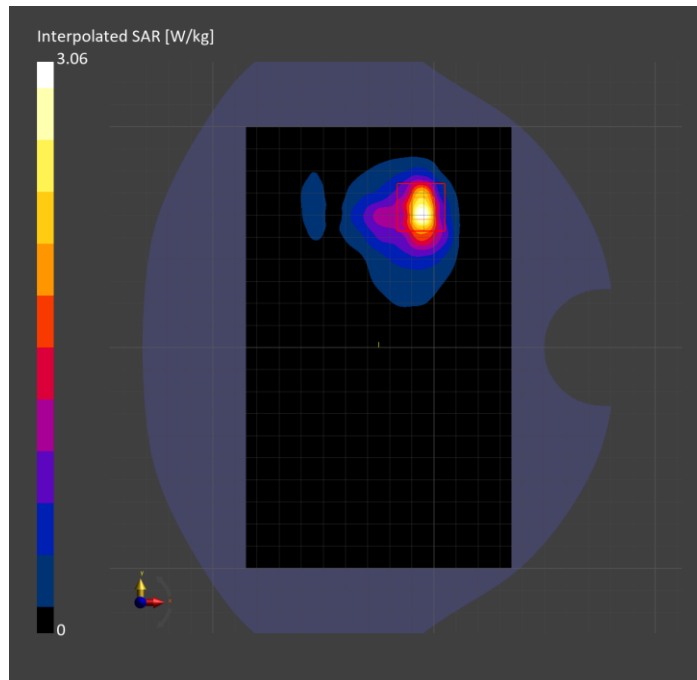
Probe Calibration Date	EX3DV4 - SN3902 2024-03-12	Phantom	Twin-SAM V5.0 (30deg probe tilt)
DAE Calibration Date	DAE4 Sn1799 2023-04-04	TSL Type	HBBL-600-10000
Software Version	16.2.4.2524		

Scan Setup

	Area Scan	Zoom Scan
Grid Extents [mm]	120.0 x 200.0	22.0 x 22.0 x 22.0
Grid Steps [mm]	10.0 x 10.0	4.0 x 4.0 x 1.4
Sensor Surface [mm]	3.0	1.4
Graded Grid	N/A	Yes
M2/M1 [%]		60.5
Dist 3dB Peak [mm]		6.4
Peak SAR [W/kg] SAR Peak Location [mm]	N/A	3.06 [-4.4, 63.7, -207.0]

Measurement Results

	Area Scan	Zoom Scan
psSAR1g [W/Kg]	0.597	0.725
psSAR10g [W/Kg]	0.194	0.219
Power Drift [dB]	-0.00	0.04



ISM 2.4 GHz Band: IEEE 802.15.1 Bluetooth (GFSK, DH5), EDGE LEFT

Exposure Conditions

Band	ISM 2.4 GHz Band	TSL Permittivity	40.5
Frequency [MHz] Channel Number	2441.000 39	TSL Conductivity [S/m]	1.72
Group UID	Bluetooth 10032-CAA	Phantom Section TSL	Flat HSL
Conversion Factor	6.96	Test Distance [mm]	5.00

Hardware Setup

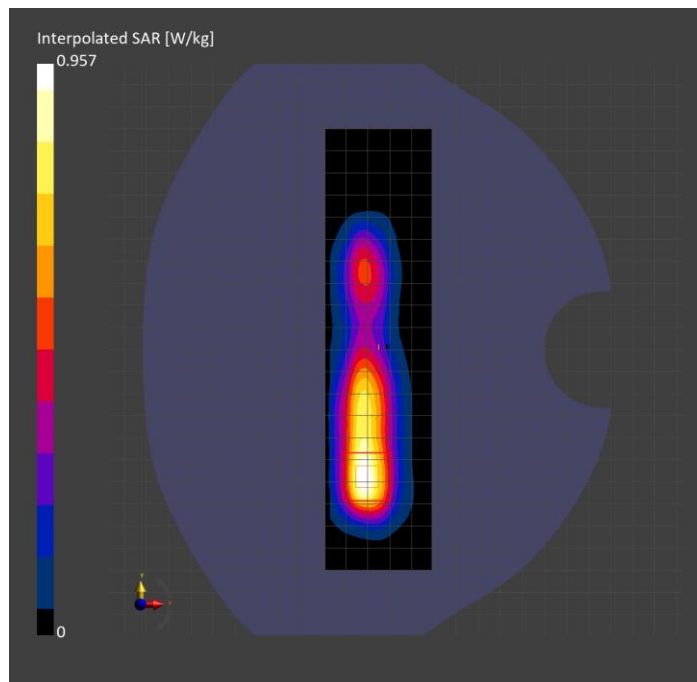
Probe Calibration Date	EX3DV4 - SN7820 2024-05-10	Phantom	Twin-SAM V8.0 (30deg probe tilt)
DAE Calibration Date	DAE4 Sn1544 2024-01-16	TSL Type	HBBL-600-10000
Software Version	16.2.4.2524		

Scan Setup

	Area Scan	Zoom Scan
Grid Extents [mm]	48.0 x 200.0	30.0 x 30.0 x 30.0
Grid Steps [mm]	8.0 x 10.0	5.0 x 5.0 x 1.5
Sensor Surface [mm]	3.0	1.4
Graded Grid	N/A	Yes
M2/M1 [%]		78.6
Dist 3dB Peak [mm]		8.3
Peak SAR [W/kg] SAR Peak Location [mm]	N/A	0.957 [-30.4, -62.0, -207.0]

Measurement Results

	Area Scan	Zoom Scan
psSAR1g [W/Kg]	0.428	0.452
psSAR10g [W/Kg]	0.204	0.206
Power Drift [dB]	0.01	-0.02



NFC: Type A, EDGE TOP

Exposure Conditions

Band	NFC	TSL Permittivity	52.8
Frequency [MHz] Channel Number	13.600 N/A	TSL Conductivity [S/m]	0.702
Group UID	CW 0--	Phantom Section TSL	Flat HSL
Conversion Factor	17.98	Test Distance [mm]	0.00

Hardware Setup

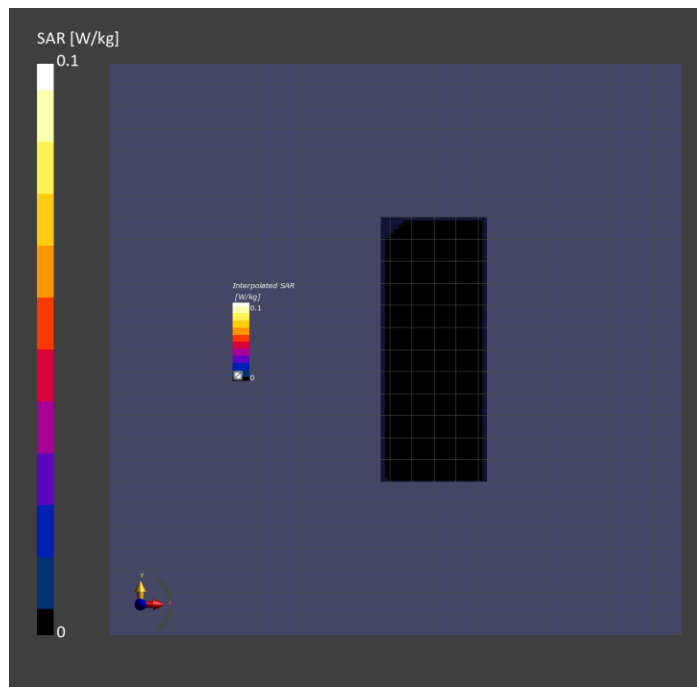
Probe Calibration Date	EX3DV4 - SN3991 2023-10-12	Phantom	ELI V5.0 (20deg probe tilt)
DAE Calibration Date	DAE4 Sn1380 2024-02-09	TSL Type	HBBL-600-10000
Software Version	16.2.4.2524		

Scan Setup

	Area Scan
Grid Extents [mm]	48.0 x 120.0
Grid Steps [mm]	8.0 x 15.0
Sensor Surface [mm]	3.0
Graded Grid	N/A

Measurement Results

	Area Scan
psSAR1g [W/Kg]	0
psSAR10g [W/Kg]	0
Power Drift [dB]	N/A



U-NII-8: IEEE 802.11ax (160MHz, MCS0, 99pc duty cycle), BACK

Exposure Conditions

Band	U-NII-8	TSL Permittivity	32.4
Frequency [MHz] Channel Number	6985.000 207	TSL Conductivity [S/m]	6.76
Group UID	WLAN 10755-AAC	Phantom Section TSL	Flat HSL
Conversion Factor	5.35	Test Distance [mm]	5.00

Hardware Setup

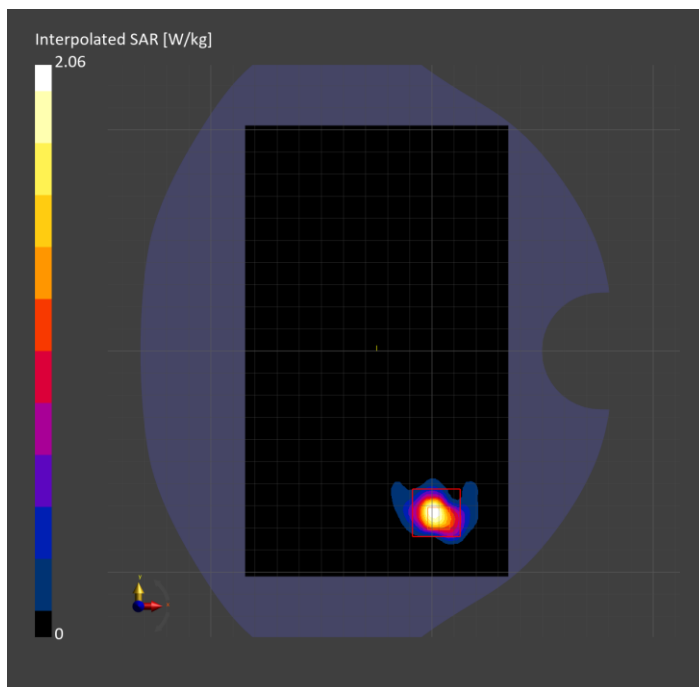
Probe Calibration Date	EX3DV4 - SN7501 2024-03-14	Phantom	Twin-SAM V8.0 (30deg probe tilt)
DAE Calibration Date	DAE4 Sn1357 2024-01-09	TSL Type	HBBL-600-10000
Software Version	16.2.4.2524		

Scan Setup

	Area Scan	Zoom Scan 1	Zoom Scan 2
Grid Extents [mm]	119.0 x 204.0	22.0 x 22.0 x 22.0	22.0 x 22.0 x 22.0
Grid Steps [mm]	8.5 x 8.5	3.4 x 3.4 x 1.4	3.4 x 3.4 x 1.4
Sensor Surface [mm]	3.0	1.4	1.4
Graded Grid	N/A	Yes	Yes
M2/M1 [%]		48.1	48.0
Dist 3dB Peak [mm]		4.4	4.4
Peak SAR [W/kg] SAR Peak Location [mm]	N/A	2.06 [3.1, -76.4, -207.0]	2.05 [3.1, -76.4, -207.0]

Measurement Results

	Area Scan	Zoom Scan 1	Zoom Scan 2	APD 1	APD 2
psSAR1g [W/Kg]	0.249	0.315	0.313	N/A	N/A
psSAR8g [W/Kg]	0.073	0.084	0.084	N/A	N/A
psSAR10g [W/Kg]	0.063	0.071	0.070	N/A	N/A
psAPD (4.0cm ² , sq.) [W/m ²]	N/A	N/A	N/A	1.69	1.67
Power Drift [dB]	N/A	-0.34	0.44	N/A	N/A



U-NII-5: IEEE 802.11ax (160MHz, MCS0, 99pc duty cycle), BACK

Exposure Conditions

Band	U-NII-5	Phantom Section	5G
Frequency [MHz] Channel Number	6185.0 47	Conversion Factor	1.0
Group UID	WLAN, 10755-AAC	Position Test Distance [mm]	BACK 2.00

Hardware Setup

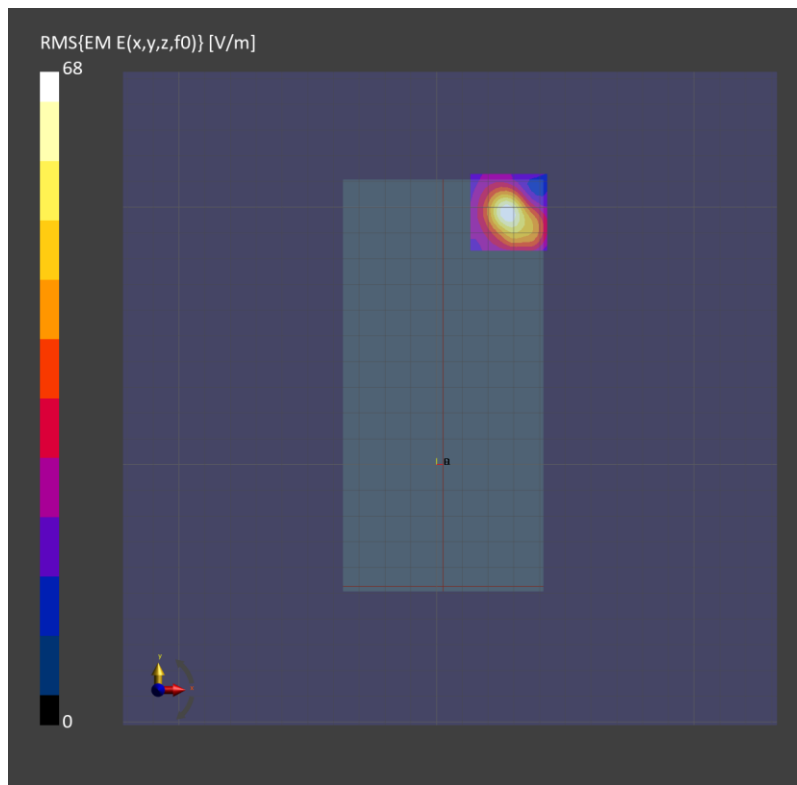
Probe Calibration Date	EUmmWV4 - SN9619_F1-55GHz 2024-03-08	Phantom	mmWave xxxx
DAE Calibration Date	DAE4 Sn1472 2024-01-16	Medium	Air -
Software Version	3.2.0.1840		

Scan Setup

Scan Type	5G Scan	Grid Extents [mm]	25.0 x 25.0
Grid Steps [lambda]	0.041 x 0.041	Sensor Surface [mm]	2.0

Measurement Results

Avg. Area [cm ²]	4.00
psPDn+ [W/m ²]	2.83
psPDtot+ [W/m ²]	3.39
psPDmod+ [W/m ²]	5.26
E _{max} [V/m]	68.0
Power Drift [dB]	0.16



U-NII-8: IEEE 802.11ax (160MHz, MCS0, 99pc duty cycle), BACK

Exposure Conditions

Band	U-NII-8	Phantom Section	5G
Frequency [MHz] Channel Number	6985.0 207	Conversion Factor	1.0
Group UID	WLAN, 10755-AAC	Position Test Distance [mm]	BACK 2.00

Hardware Setup

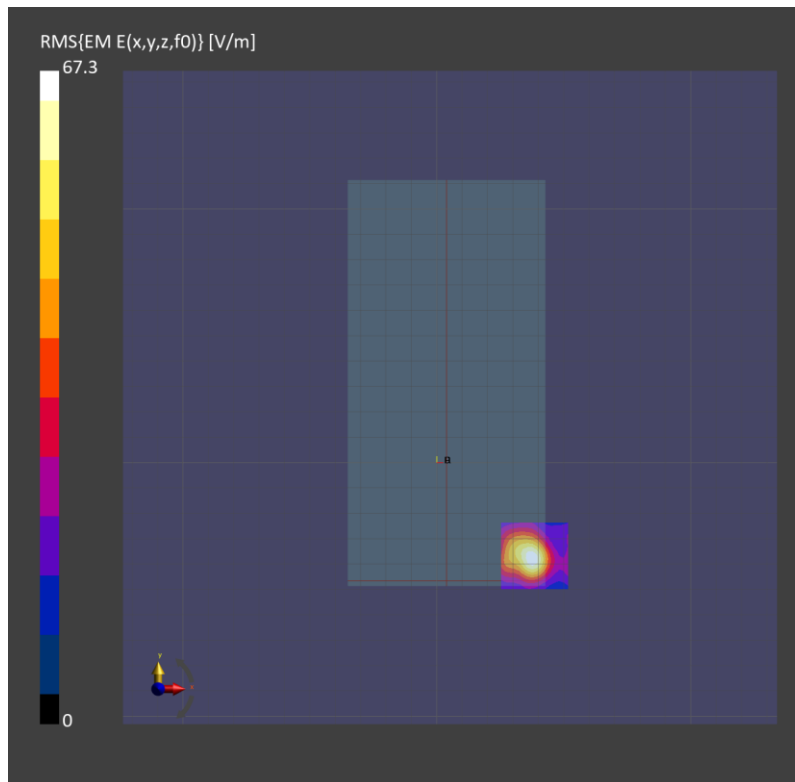
Probe Calibration Date	EUmmWV4 - SN9619_F1-55GHz 2024-03-08	Phantom	mmWave xxxx
DAE Calibration Date	DAE4 Sn1472 2024-01-16	Medium	Air -
Software Version	3.2.0.1840		

Scan Setup

Scan Type	5G Scan	Grid Extents [mm]	25.0 x 25.0
Grid Steps [lambda]	0.041 x 0.041	Sensor Surface [mm]	2.0

Measurement Results

Avg. Area [cm ²]	4.00
psPDn+ [W/m ²]	2.63
psPDtot+ [W/m ²]	3.03
psPDmod+ [W/m ²]	4.47
E _{max} [V/m]	67.3
H _{max} [A/m]	0.153
Power Drift [dB]	0.20



U-NII-8: IEEE 802.11ax (160MHz, MCS0, 99pc duty cycle), BACK

Exposure Conditions

Band	U-NII-8	Phantom Section	5G
Frequency [MHz] Channel Number	6985.0 207	Conversion Factor	1.0
Group UID	WLAN, 10755-AAC	Position Test Distance [mm]	BACK 2.00

Hardware Setup

Probe Calibration Date	EUmmWV4 - SN9619_F1-55GHz 2024-03-08	Phantom	mmWave xxxx
DAE Calibration Date	DAE4 Sn1472 2024-01-16	Medium	Air -
Software Version	3.2.0.1840		

Scan Setup

Scan Type	5G Scan	Grid Extents [mm]	25.0 x 25.0
Grid Steps [lambda]	0.041 x 0.041	Sensor Surface [mm]	2.0

Measurement Results

Avg. Area [cm ²]	4.00
psPDn+ [W/m ²]	2.35
psPDtot+ [W/m ²]	2.88
psPDmod+ [W/m ²]	4.17
E _{max} [V/m]	67.0
H _{max} [A/m]	0.174
Power Drift [dB]	0.23

