

# System Performance Check Report for CLA-13 - SN1008

## Exposure Conditions

Frequency [MHz]   Channel Number	13.000   0	TSL Permittivity	51.9
Group   UID	CW   0--	TSL Conductivity [S/m]	0.702
Conversion Factor	17.98	Phantom Section   TSL	Flat   HSL

## Hardware Setup

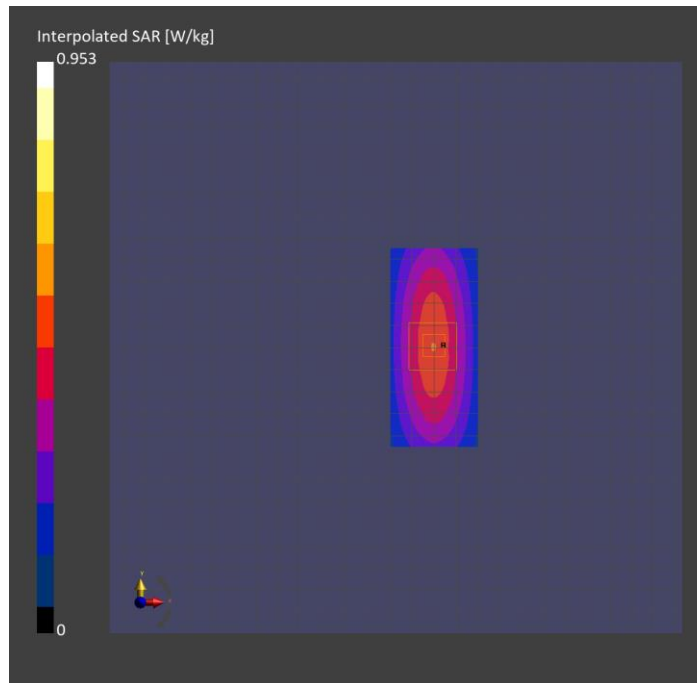
Probe   Calibration Date	EX3DV4 - SN3991   2023-10-12	Phantom	ELI V5.0 (20deg probe tilt)
DAE   Calibration Date	DAE4 Sn1380   2024-02-09	TSL Type	HBBL-600-10000
Software Version	16.2.4.2524		

## Scans Setup

	Area Scan	Zoom Scan
Grid Extents [mm]	40.0 x 90.0	30.0 x 30.0 x 30.0
Grid Steps [mm]	10.0 x 15.0	6.0 x 6.0 x 1.5
Sensor Surface [mm]	3.0	1.4
Graded Grid	N/A	Yes
M2/M1 [%]		76.4
Dist 3dB Peak [mm]		15.7

## Measurement Results

	Area Scan	Zoom Scan
psSAR1g [W/Kg]	0.518	<b>0.492</b>
psSAR10g [W/Kg]	0.416	<b>0.309</b>
Power Drift [dB]	N/A	0.02



# System Performance Check Report for D3500V2 - SN1060

## Exposure Conditions

Frequency [MHz]   Channel Number	3500.000   0	TSL Permittivity	39.0
Group   UID	CW   0--	TSL Conductivity [S/m]	2.73
Conversion Factor	6.8	Phantom Section   TSL	Flat   HSL

## Hardware Setup

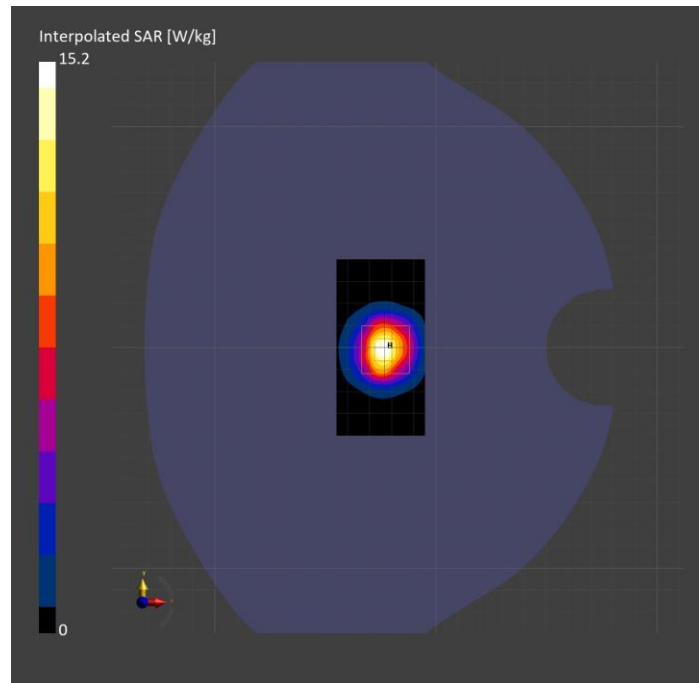
Probe   Calibration Date	EX3DV4 - SN7335   2024-01-09	Phantom	Twin-SAM V8.0 (30deg probe tilt)
DAE   Calibration Date	DAE4ip Sn1619   2024-04-11	TSL Type	HBBL-600-10000
Software Version	16.2.4.2524		

## Scans Setup

	Area Scan	Zoom Scan
Grid Extents [mm]	40.0 x 80.0	28.0 x 28.0 x 28.0
Grid Steps [mm]	10.0 x 10.0	5.0 x 5.0 x 1.4
Sensor Surface [mm]	3.0	1.4
Graded Grid	N/A	Yes
M2/M1 [%]		77.2
Dist 3dB Peak [mm]		8.6

## Measurement Results

	Area Scan	Zoom Scan
psSAR1g [W/Kg]	6.07	6.29
psSAR10g [W/Kg]	2.34	2.42
Power Drift [dB]	N/A	-0.05



# System Performance Check Report for D2450V2 - SN706

## Exposure Conditions

Frequency [MHz]   Channel Number	2450.000   0	TSL Permittivity	39.4
Group   UID	CW   0--	TSL Conductivity [S/m]	1.73
Conversion Factor	7.18	Phantom Section   TSL	Flat   HSL

## Hardware Setup

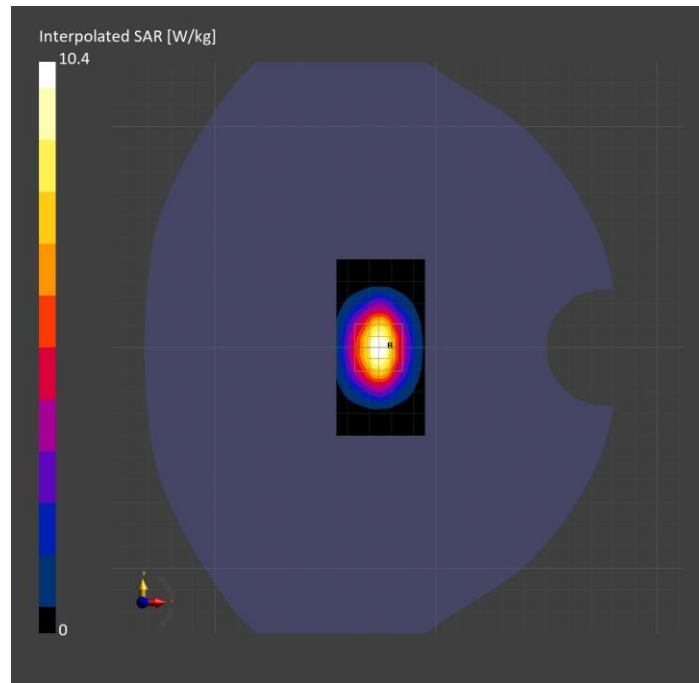
Probe   Calibration Date	EX3DV4 - SN3772   2024-02-07	Phantom	Twin-SAM V8.0 (30deg probe tilt)
DAE   Calibration Date	DAE4 Sn1258   2024-03-12	TSL Type	HBBL-600-10000
Software Version	16.2.4.2524		

## Scans Setup

	Area Scan	Zoom Scan
Grid Extents [mm]	40.0 x 80.0	30.0 x 30.0 x 30.0
Grid Steps [mm]	10.0 x 10.0	5.0 x 5.0 x 1.5
Sensor Surface [mm]	3.0	1.4
Graded Grid	N/A	Yes
M2/M1 [%]		80.8
Dist 3dB Peak [mm]		9.0

## Measurement Results

	Area Scan	Zoom Scan
psSAR1g [W/Kg]	5.04	5.15
psSAR10g [W/Kg]	2.34	2.45
Power Drift [dB]	-0.00	0.01



# System Performance Check Report for D2450V2 - SN706

## Exposure Conditions

Frequency [MHz]   Channel Number	2450.000   0	TSL Permittivity	39.6
Group   UID	CW   0--	TSL Conductivity [S/m]	1.73
Conversion Factor	7.18	Phantom Section   TSL	Flat   HSL

## Hardware Setup

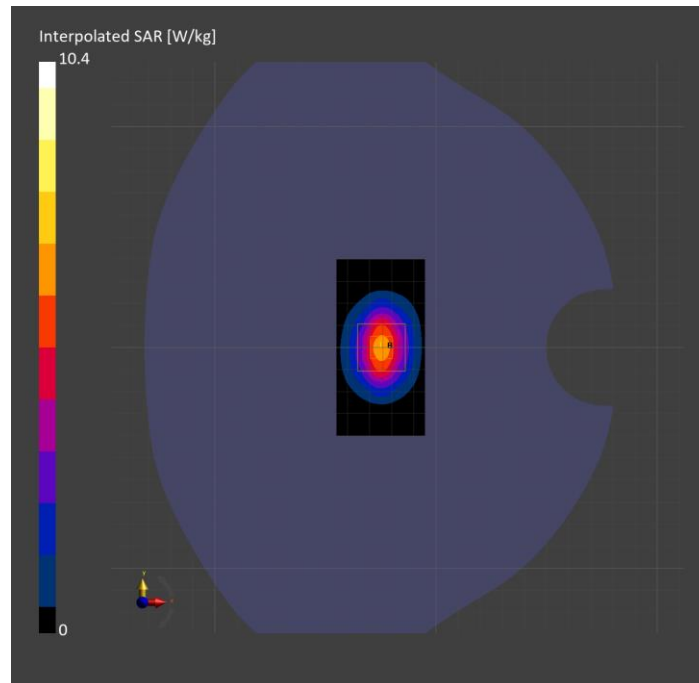
Probe   Calibration Date	EX3DV4 - SN3772   2024-02-07	Phantom	Twin-SAM V8.0 (30deg probe tilt)
DAE   Calibration Date	DAE4 Sn1258   2024-03-12	TSL Type	HBBL-600-10000
Software Version	16.2.4.2524		

## Scans Setup

	Area Scan	Zoom Scan
Grid Extents [mm]	40.0 x 80.0	30.0 x 30.0 x 30.0
Grid Steps [mm]	10.0 x 10.0	5.0 x 5.0 x 1.5
Sensor Surface [mm]	3.0	1.4
Graded Grid	N/A	Yes
M2/M1 [%]		81.3
Dist 3dB Peak [mm]		8.6

## Measurement Results

	Area Scan	Zoom Scan
psSAR1g [W/Kg]	5.22	<b>5.24</b>
psSAR10g [W/Kg]	2.40	<b>2.49</b>
Power Drift [dB]	0.00	-0.00



# System Performance Check Report for D2450V2 - SN706

## Exposure Conditions

Frequency [MHz]   Channel Number	2450.000   0	TSL Permittivity	40.5
Group   UID	CW   0--	TSL Conductivity [S/m]	1.73
Conversion Factor	6.96	Phantom Section   TSL	Flat   HSL

## Hardware Setup

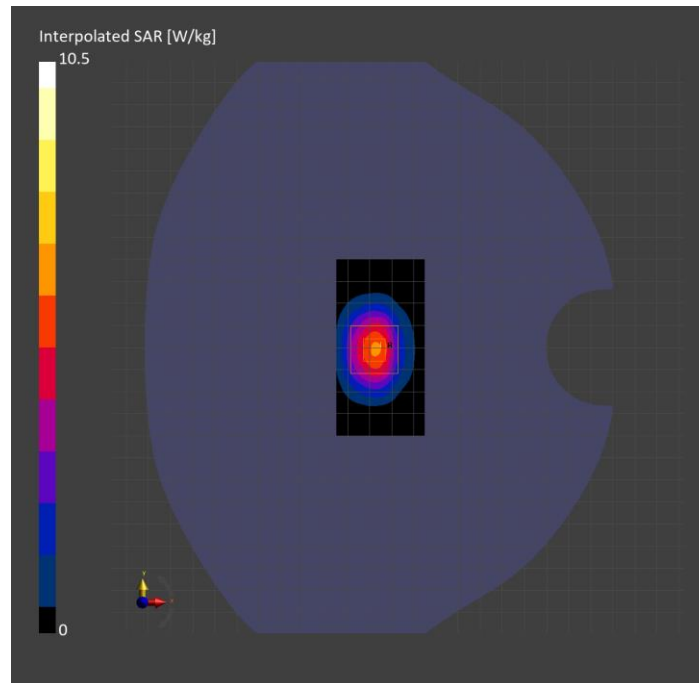
Probe   Calibration Date	EX3DV4 - SN7820   2024-05-10	Phantom	Twin-SAM V8.0 (30deg probe tilt)
DAE   Calibration Date	DAE4 Sn1544   2024-01-16	TSL Type	HBBL-600-10000
Software Version	16.2.4.2524		

## Scans Setup

	Area Scan	Zoom Scan
Grid Extents [mm]	40.0 x 80.0	30.0 x 30.0 x 30.0
Grid Steps [mm]	10.0 x 10.0	5.0 x 5.0 x 1.5
Sensor Surface [mm]	3.0	1.4
Graded Grid	N/A	Yes
M2/M1 [%]		78.4
Dist 3dB Peak [mm]		9.0

## Measurement Results

	Area Scan	Zoom Scan
psSAR1g [W/Kg]	4.92	5.11
psSAR10g [W/Kg]	2.36	2.45
Power Drift [dB]	-0.00	0.01



# System Performance Check Report for D6.5GHzV2 - SN1033

## Exposure Conditions

Frequency [MHz]   Channel Number	6500.000   0	TSL Permittivity	32.8
Group   UID	CW   0--	TSL Conductivity [S/m]	6.08
Conversion Factor	4.63	Phantom Section   TSL	Flat   HSL

## Hardware Setup

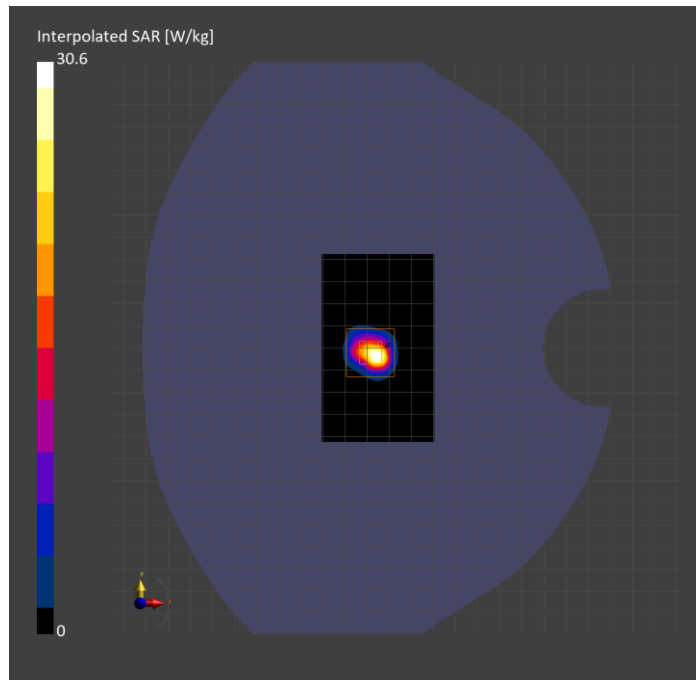
Probe   Calibration Date	EX3DV4 - SN7587   2024-04-15	Phantom	Twin-SAM V8.0 (30deg probe tilt)
DAE   Calibration Date	DAE4 Sn1797   2024-05-02	TSL Type	HBBL-600-10000
Software Version	16.2.4.2524		

## Scans Setup

	Area Scan	Zoom Scan
Grid Extents [mm]	51.0 x 85.0	22.0 x 22.0 x 22.0
Grid Steps [mm]	8.5 x 8.5	3.4 x 3.4 x 1.4
Sensor Surface [mm]	3.0	1.4
Graded Grid	N/A	Yes
M2/M1 [%]		50.6
Dist 3dB Peak [mm]		4.2

## Measurement Results

	Area Scan	Zoom Scan	APD
psSAR1g [W/Kg]	18.6	23.7	N/A
psSAR8g [W/Kg]	4.77	5.22	N/A
psSAR10g [W/Kg]	3.98	4.27	N/A
psAPD (4.0cm <sup>2</sup> , sq.) [W/m <sup>2</sup> ]	N/A	N/A	104
Power Drift [dB]	0.02	-0.06	N/A



# System Performance Check Report for D6.5GHzV2 - SN1033

## Exposure Conditions

Frequency [MHz]   Channel Number	6500.000   0	TSL Permittivity	33.3
Group   UID	CW   0--	TSL Conductivity [S/m]	5.95
Conversion Factor	5.35	Phantom Section   TSL	Flat   HSL

## Hardware Setup

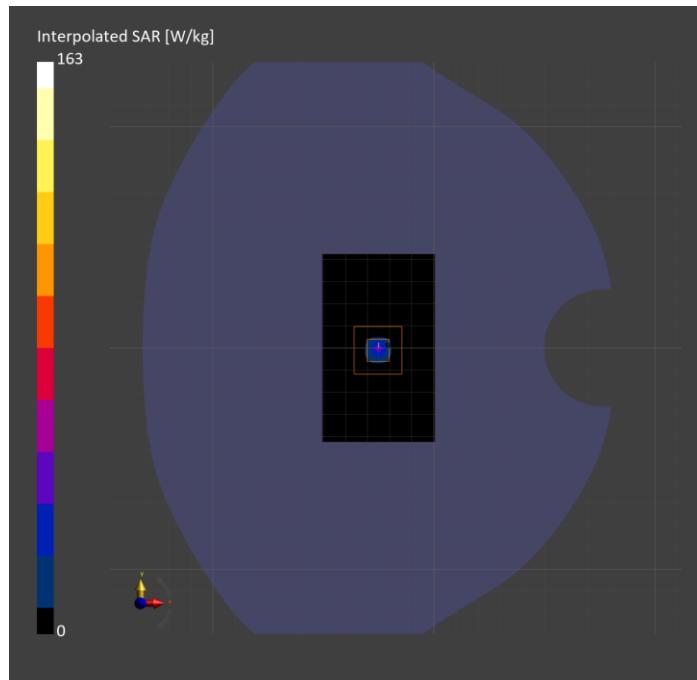
Probe   Calibration Date	EX3DV4 - SN7501   2024-03-14	Phantom	Twin-SAM V8.0 (30deg probe tilt)
DAE   Calibration Date	DAE4 Sn1357   2024-01-09	TSL Type	HBBL-600-10000
Software Version	16.2.4.2524		

## Scans Setup

	Area Scan	Zoom Scan
Grid Extents [mm]	51.0 x 85.0	22.0 x 22.0 x 22.0
Grid Steps [mm]	8.5 x 8.5	3.4 x 3.4 x 1.4
Sensor Surface [mm]	3.0	1.4
Graded Grid	N/A	Yes
M2/M1 [%]		54.4
Dist 3dB Peak [mm]		4.6

## Measurement Results

	Area Scan	Zoom Scan	APD
psSAR1g [W/Kg]	22.5	26.8	N/A
psSAR8g [W/Kg]	5.32	6.10	N/A
psSAR10g [W/Kg]	4.41	5.00	N/A
psAPD (4.0cm <sup>2</sup> , sq.) [W/m <sup>2</sup> ]	N/A	N/A	122
Power Drift [dB]	N/A	-0.01	N/A



# System Performance Check Report for D6.5GHzV2 - SN1033

## Exposure Conditions

Frequency [MHz]   Channel Number	6500.000   0	TSL Permittivity	33.4
Group   UID	CW   0--	TSL Conductivity [S/m]	6.19
Conversion Factor	5.35	Phantom Section   TSL	Flat   HSL

## Hardware Setup

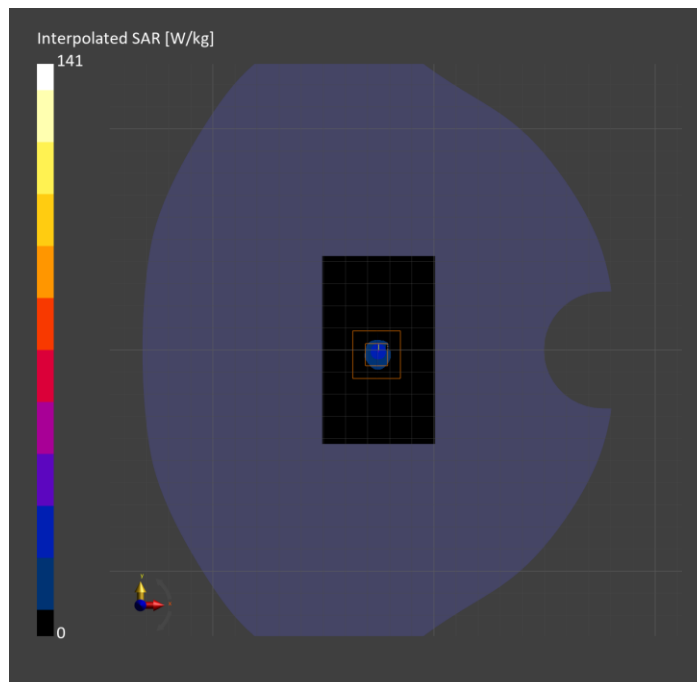
Probe   Calibration Date	EX3DV4 - SN7501   2024-03-14	Phantom	Twin-SAM V8.0 (30deg probe tilt)
DAE   Calibration Date	DAE4 Sn1357   2024-01-09	TSL Type	HBBL-600-10000
Software Version	16.2.4.2524		

## Scans Setup

	Area Scan	Zoom Scan
Grid Extents [mm]	51.0 x 85.0	22.0 x 22.0 x 22.0
Grid Steps [mm]	8.5 x 8.5	3.4 x 3.4 x 1.4
Sensor Surface [mm]	3.0	1.4
Graded Grid	N/A	Yes
M2/M1 [%]		55.2
Dist 3dB Peak [mm]		4.8

## Measurement Results

	Area Scan	Zoom Scan	APD
psSAR1g [W/Kg]	18.8	<b>22.9</b>	N/A
psSAR8g [W/Kg]	4.57	<b>5.19</b>	N/A
psSAR10g [W/Kg]	3.79	<b>4.26</b>	N/A
psAPD (4.0cm <sup>2</sup> , sq.) [W/m <sup>2</sup> ]	N/A	N/A	<b>104</b>
Power Drift [dB]	N/A	0.06	N/A





# System Performance Check Report for D5GHzV2 - SN1003

## Exposure Conditions

Frequency [MHz]   Channel Number	5600.000   0	TSL Permittivity	35.3
Group   UID	CW   0--	TSL Conductivity [S/m]	4.91
Conversion Factor	4.93	Phantom Section   TSL	Flat   HSL

## Hardware Setup

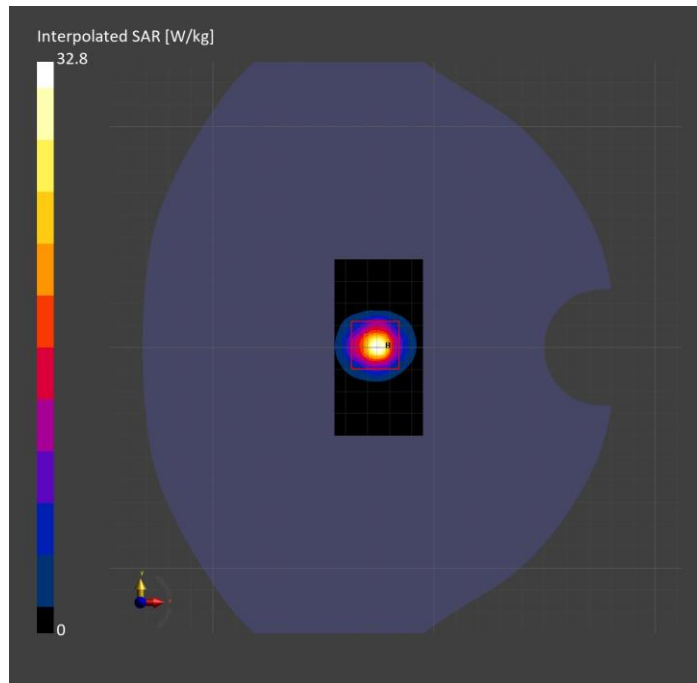
Probe   Calibration Date	EX3DV4 - SN3902   2024-03-12	Phantom	Twin-SAM V5.0 (30deg probe tilt)
DAE   Calibration Date	DAE4 Sn1799   2023-04-04	TSL Type	HBBL-600-10000
Software Version	16.2.4.2524		

## Scans Setup

	Area Scan	Zoom Scan
Grid Extents [mm]	40.0 x 80.0	22.0 x 22.0 x 22.0
Grid Steps [mm]	10.0 x 10.0	4.0 x 4.0 x 1.4
Sensor Surface [mm]	3.0	1.4
Graded Grid	N/A	Yes
M2/M1 [%]		63.3
Dist 3dB Peak [mm]		7.4

## Measurement Results

	Area Scan	Zoom Scan
psSAR1g [W/Kg]	7.76	8.29
psSAR10g [W/Kg]	2.22	2.39
Power Drift [dB]	-0.04	0.04



# System Performance Check Report for D1640V2 - SN324

## Exposure Conditions

Frequency [MHz]   Channel Number	1640.000   0	TSL Permittivity	42.8
Group   UID	CW   0--	TSL Conductivity [S/m]	1.26
Conversion Factor	8.51	Phantom Section   TSL	Flat   HSL

## Hardware Setup

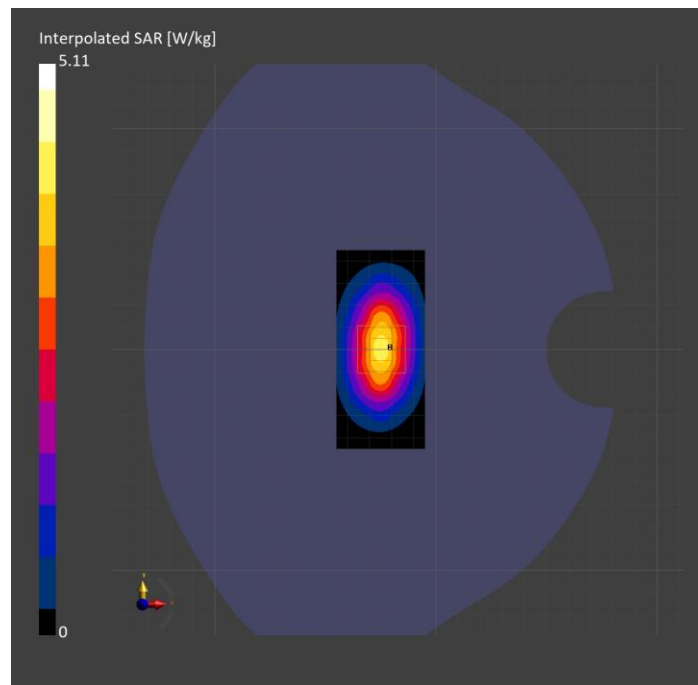
Probe   Calibration Date	EX3DV4 - SN3989   2024-01-09	Phantom	Twin-SAM V8.0 (30deg probe tilt)
DAE   Calibration Date	DAE4 Sn1433   2024-02-08	TSL Type	HBBL-600-10000
Software Version	16.2.4.2524		

## Scans Setup

	Area Scan	Zoom Scan
Grid Extents [mm]	40.0 x 90.0	30.0 x 30.0 x 30.0
Grid Steps [mm]	10.0 x 15.0	6.0 x 6.0 x 1.5
Sensor Surface [mm]	3.0	1.4
Graded Grid	N/A	Yes
M2/M1 [%]		89.9
Dist 3dB Peak [mm]		10.8

## Measurement Results

	Area Scan	Zoom Scan
psSAR1g [W/Kg]	3.34	3.29
psSAR10g [W/Kg]	1.81	1.85
Power Drift [dB]	-0.01	0.01



# System Performance Check Report for D1750V2 - SN1053

## Exposure Conditions

Frequency [MHz]   Channel Number	1750.000   0	TSL Permittivity	42.6
Group   UID	CW   0--	TSL Conductivity [S/m]	1.32
Conversion Factor	8.98	Phantom Section   TSL	Flat   HSL

## Hardware Setup

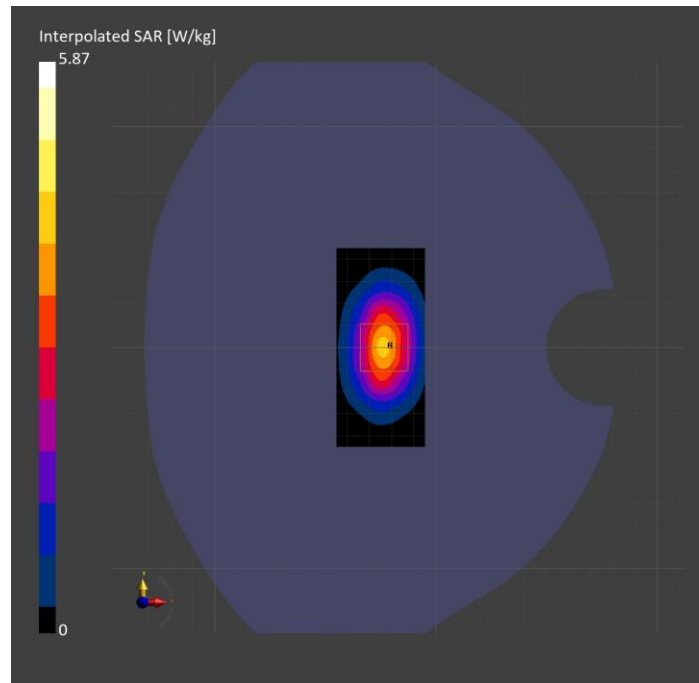
Probe   Calibration Date	EX3DV4 - SN3989   2024-01-09	Phantom	Twin-SAM V8.0 (30deg probe tilt)
DAE   Calibration Date	DAE4 Sn1433   2024-02-08	TSL Type	HBBL-600-10000
Software Version	16.2.4.2524		

## Scans Setup

	Area Scan	Zoom Scan
Grid Extents [mm]	40.0 x 90.0	30.0 x 30.0 x 30.0
Grid Steps [mm]	10.0 x 15.0	6.0 x 6.0 x 1.5
Sensor Surface [mm]	3.0	1.4
Graded Grid	N/A	Yes
M2/M1 [%]		84.1
Dist 3dB Peak [mm]		10.8

## Measurement Results

	Area Scan	Zoom Scan
psSAR1g [W/Kg]	3.31	<b>3.32</b>
psSAR10g [W/Kg]	1.77	<b>1.80</b>
Power Drift [dB]	0.02	0.01



# System Performance Check Report for D2450V2 - SN748

## Exposure Conditions

Frequency [MHz]   Channel Number	2450.000   0	TSL Permittivity	40.5
Group   UID	CW   0--	TSL Conductivity [S/m]	1.76
Conversion Factor	7.66	Phantom Section   TSL	Flat   HSL

## Hardware Setup

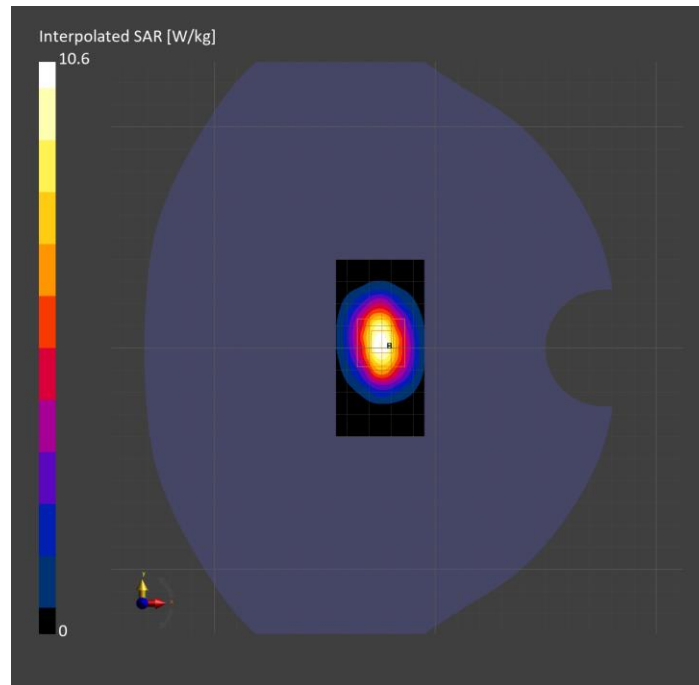
Probe   Calibration Date	EX3DV4 - SN7709   2023-11-30	Phantom	Twin-SAM V8.0 (30deg probe tilt)
DAE   Calibration Date	DAE4 Sn1714   2023-11-22	TSL Type	HBBL-600-10000
Software Version	16.2.4.2524		

## Scans Setup

	Area Scan	Zoom Scan
Grid Extents [mm]	40.0 x 80.0	30.0 x 30.0 x 30.0
Grid Steps [mm]	10.0 x 10.0	5.0 x 5.0 x 1.5
Sensor Surface [mm]	3.0	1.4
Graded Grid	N/A	Yes
M2/M1 [%]		81.2
Dist 3dB Peak [mm]		8.6

## Measurement Results

	Area Scan	Zoom Scan
psSAR1g [W/Kg]	5.29	5.33
psSAR10g [W/Kg]	2.43	2.53
Power Drift [dB]	N/A	-0.04



# System Performance Check Report for D2450V2 - SN748

## Exposure Conditions

Frequency [MHz]   Channel Number	2450.000   0	TSL Permittivity	40.5
Group   UID	CW   0--	TSL Conductivity [S/m]	1.80
Conversion Factor	7.66	Phantom Section   TSL	Flat   HSL

## Hardware Setup

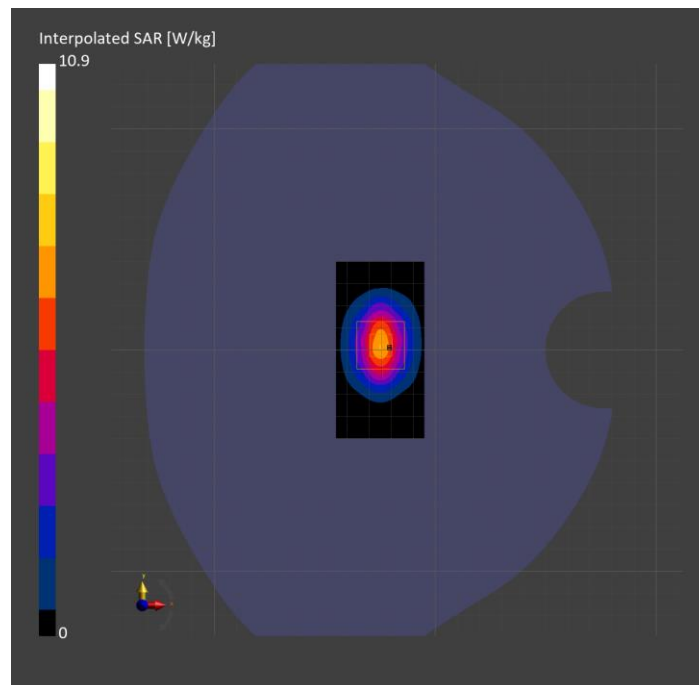
Probe   Calibration Date	EX3DV4 - SN7709   2023-11-30	Phantom	Twin-SAM V8.0 (30deg probe tilt)
DAE   Calibration Date	DAE4 Sn1714   2023-11-22	TSL Type	HBBL-600-10000
Software Version	16.2.4.2524		

## Scans Setup

	Area Scan	Zoom Scan
Grid Extents [mm]	40.0 x 80.0	30.0 x 30.0 x 30.0
Grid Steps [mm]	10.0 x 10.0	5.0 x 5.0 x 1.5
Sensor Surface [mm]	3.0	1.4
Graded Grid	N/A	Yes
M2/M1 [%]		81.4
Dist 3dB Peak [mm]		9.0

## Measurement Results

	Area Scan	Zoom Scan
psSAR1g [W/Kg]	5.45	<b>5.47</b>
psSAR10g [W/Kg]	2.50	<b>2.60</b>
Power Drift [dB]	N/A	0.03



# System Performance Check Report for 5G Source - SN1015

## Exposure Conditions

Band	Validation band	Phantom Section	5G
Frequency [MHz]   Channel Number	10000.0   0	Conversion Factor	1.0
Group   UID	CW, 0--	Position   Test Distance [mm]	FRONT   10.00

## Hardware Setup

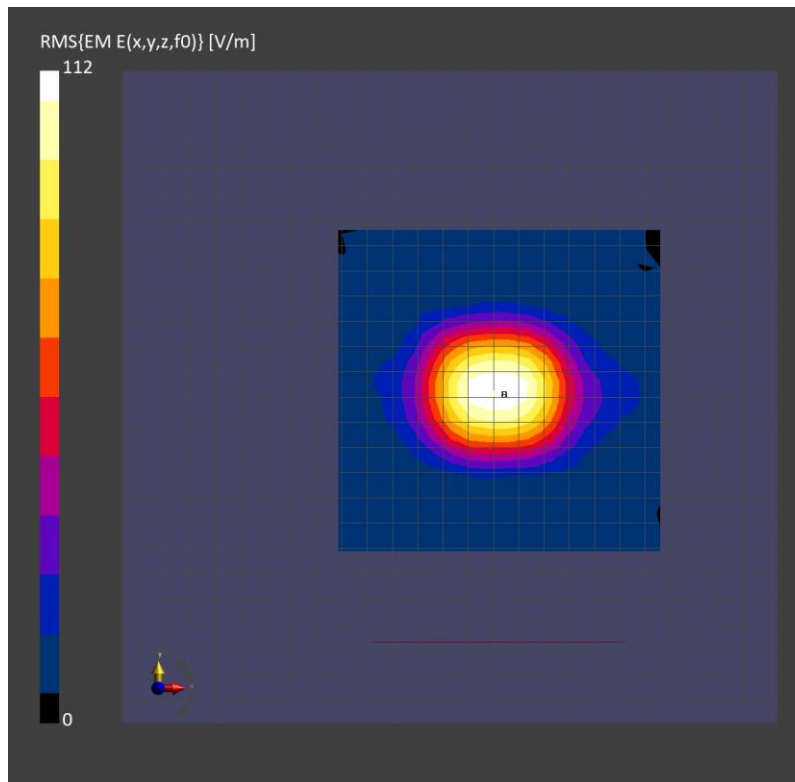
Probe   Calibration Date	EUmmWV4 - SN9589_F1-55GHz   2023-09-05	Phantom	mmWave   xxxx
DAE   Calibration Date	DAE4ip Sn1621   2024-04-12	Medium	Air   -
Software Version	3.2.0.1840		

## Scan Setup

Scan Type	5G Scan	Grid Extents [mm]	120.0 x 120.0
Grid Steps [lambda]	0.25 x 0.25	Sensor Surface [mm]	10.0

## Measurement Results

Avg. Area [cm <sup>2</sup> ]	4.00
psPDn+ [W/m <sup>2</sup> ]	29.2
psPDtot+ [W/m <sup>2</sup> ]	29.3
psPDmod+ [W/m <sup>2</sup> ]	29.5
E <sub>max</sub> [V/m]	110
H <sub>max</sub> [A/m]	0.317
Power Drift [dB]	0.01



# System Performance Check Report for 5G Source - SN1015

## Exposure Conditions

Band	Validation band	Phantom Section	5G
Frequency [MHz]   Channel Number	10000.0   0	Conversion Factor	1.0
Group   UID	CW, 0--	Position   Test Distance [mm]	FRONT   10.00

## Hardware Setup

Probe   Calibration Date	EUmmWV4 - SN9619_F1-55GHz   2024-03-08	Phantom	mmWave   xxxx
DAE   Calibration Date	DAE4 Sn1472   2024-01-16	Medium	Air   -
Software Version	3.2.0.1840		

## Scan Setup

Scan Type	5G Scan	Grid Extents [mm]	120.0 x 120.0
Grid Steps [lambda]	0.25 x 0.25	Sensor Surface [mm]	10.0

## Measurement Results

Avg. Area [cm <sup>2</sup> ]	4.00
psPDn+ [W/m <sup>2</sup> ]	29.2
psPDtot+ [W/m <sup>2</sup> ]	29.3
psPDmod+ [W/m <sup>2</sup> ]	29.5
E <sub>max</sub> [V/m]	111
H <sub>max</sub> [A/m]	0.305
Power Drift [dB]	0.01

