

PCS 1900 RF Interference Potential Test Report

Hardware Setup

Probe | Calibration Date EF3DV3 - SN4028 | September 04, 2023
DAE | Calibration Date DAE4 Sn1546 | March 11, 2024
Software Version 1.2.0.1713

Communication Systems

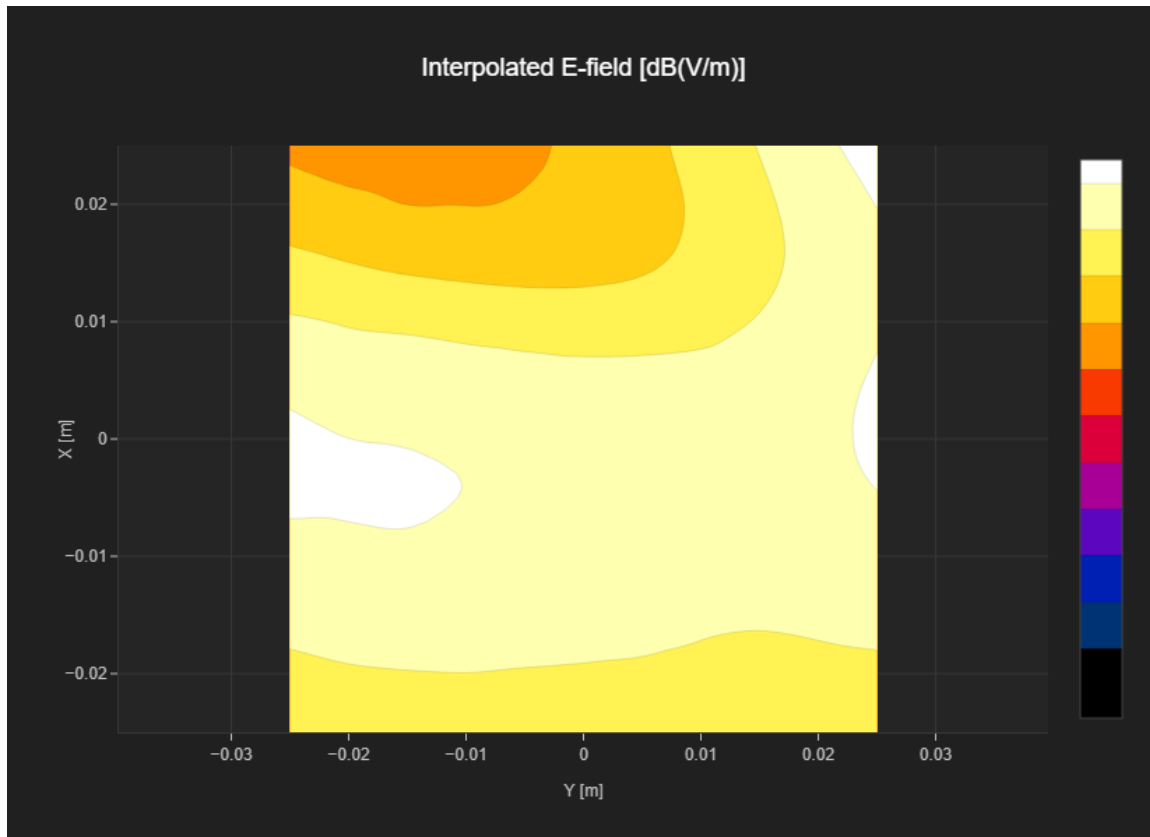
MIF 3.8
Channel | Frequency [MHz] 512 | 1850.2
Communication Systems' Name GPRS-FDD (TDMA, GMSK, TN 0)

Grid Settings

Extent X [mm]	50.0	Step X [mm]	10.0
Extent Y [mm]	50.0	Step Y [mm]	10.0
Distance [mm]	15.0		

Results

E _{max} [dBV/m]	22.6	E _{avg 50x50 Max} [dBV/m]	20.84
Drift [dB]	-0.02	RFail [dBV/m]	24.64



PCS 1900 RF Interference Potential Test Report

Hardware Setup

Probe | Calibration Date EF3DV3 - SN4028 | September 04, 2023
 DAE | Calibration Date DAE4 Sn1546 | March 11, 2024
 Software Version 1.2.0.1713

Communication Systems

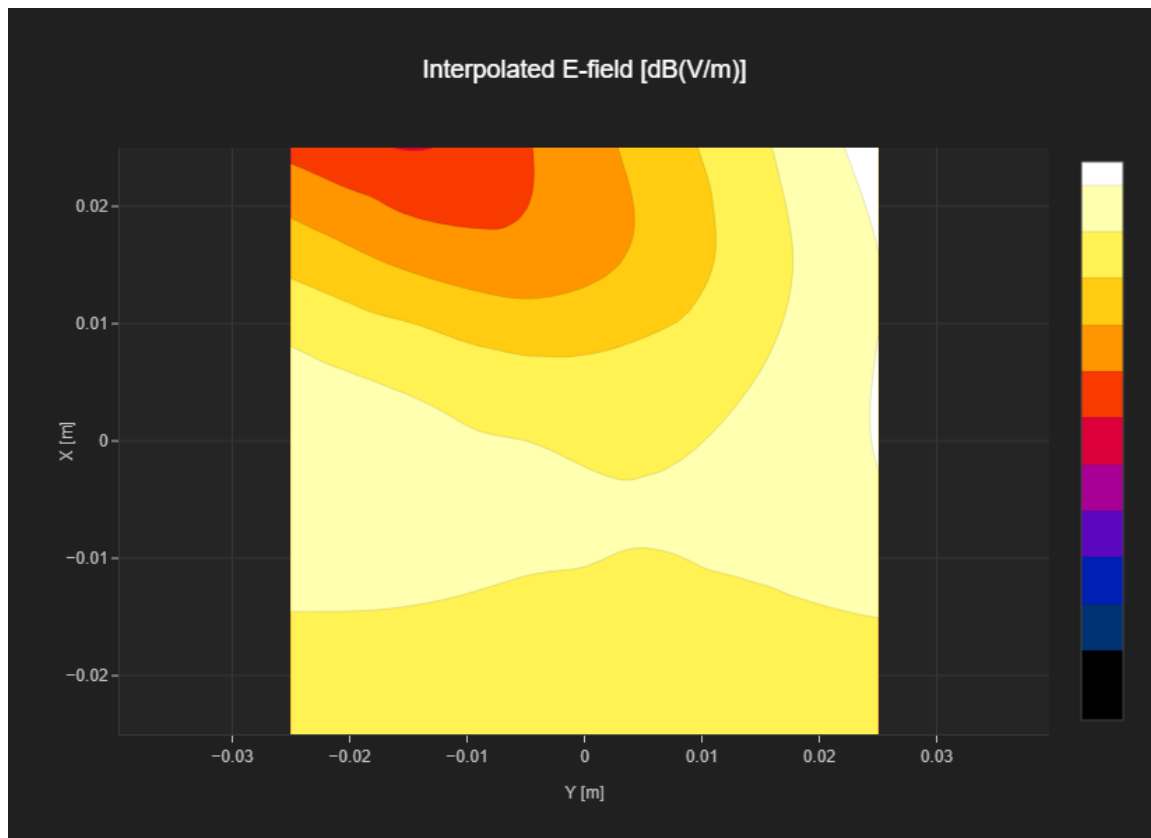
MIF 3.8
 Channel | Frequency [MHz] 661 | 1880.0
 Communication Systems' Name GPRS-FDD (TDMA, GMSK, TN 0)

Grid Settings

Extent X [mm]	50.0	Step X [mm]	10.0
Extent Y [mm]	50.0	Step Y [mm]	10.0
Distance [mm]	15.0		

Results

E _{max} [dBV/m]	23.17	E _{avg 50x50 Max} [dBV/m]	19.93
Drift [dB]	-0.06	RFail [dBV/m]	23.73



PCS 1900 RF Interference Potential Test Report

Hardware Setup

Probe | Calibration Date EF3DV3 - SN4028 | September 04, 2023
 DAE | Calibration Date DAE4 Sn1546 | March 11, 2024
 Software Version 1.2.0.1713

Communication Systems

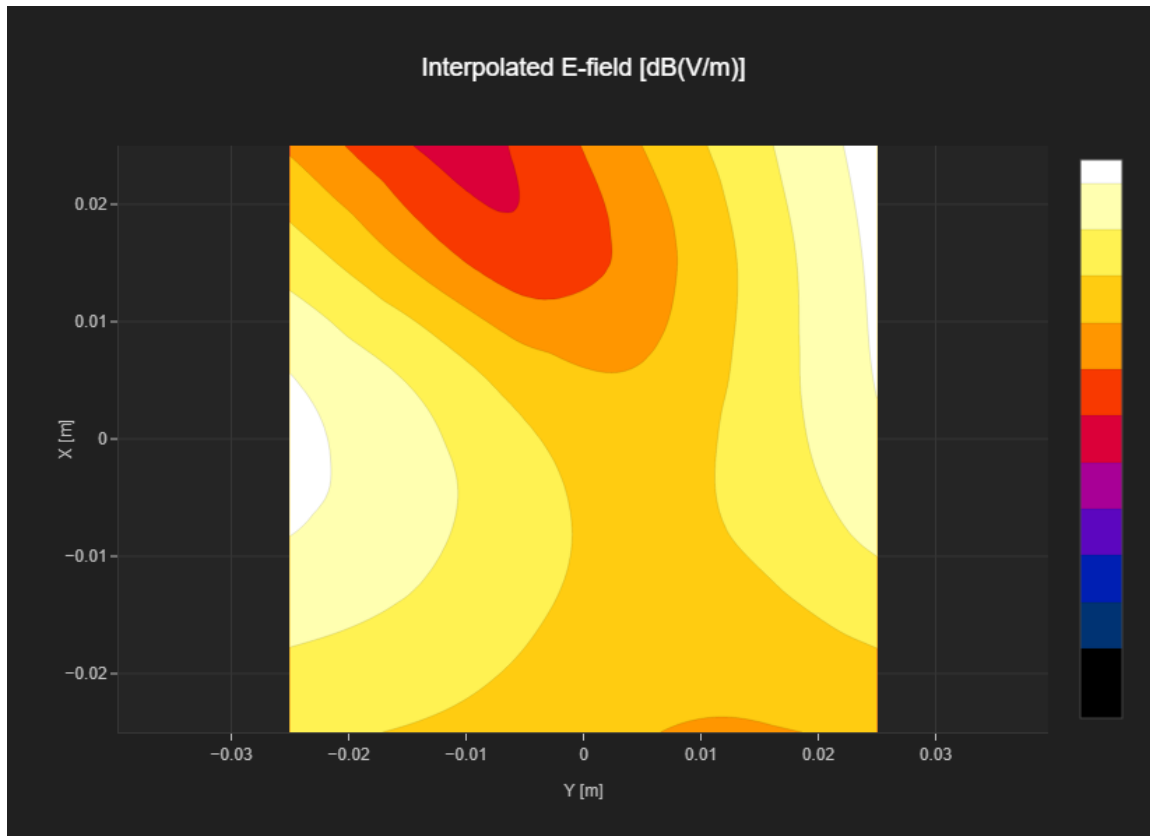
MIF 3.8
 Channel | Frequency [MHz] 810 | 1909.8
 Communication Systems' Name GPRS-FDD (TDMA, GMSK, TN 0)

Grid Settings

Extent X [mm]	50.0	Step X [mm]	10.0
Extent Y [mm]	50.0	Step Y [mm]	10.0
Distance [mm]	15.0		

Results

E _{max} [dBV/m]	23.49	E _{avg 50x50 Max} [dBV/m]	19.42
Drift [dB]	-0.13	RFail [dBV/m]	23.22



PCS 1900 RF Interference Potential Test Report

Hardware Setup

Probe | Calibration Date EF3DV3 - SN4028 | September 04, 2023
 DAE | Calibration Date DAE4 Sn1546 | March 11, 2024
 Software Version 1.2.0.1713

Communication Systems

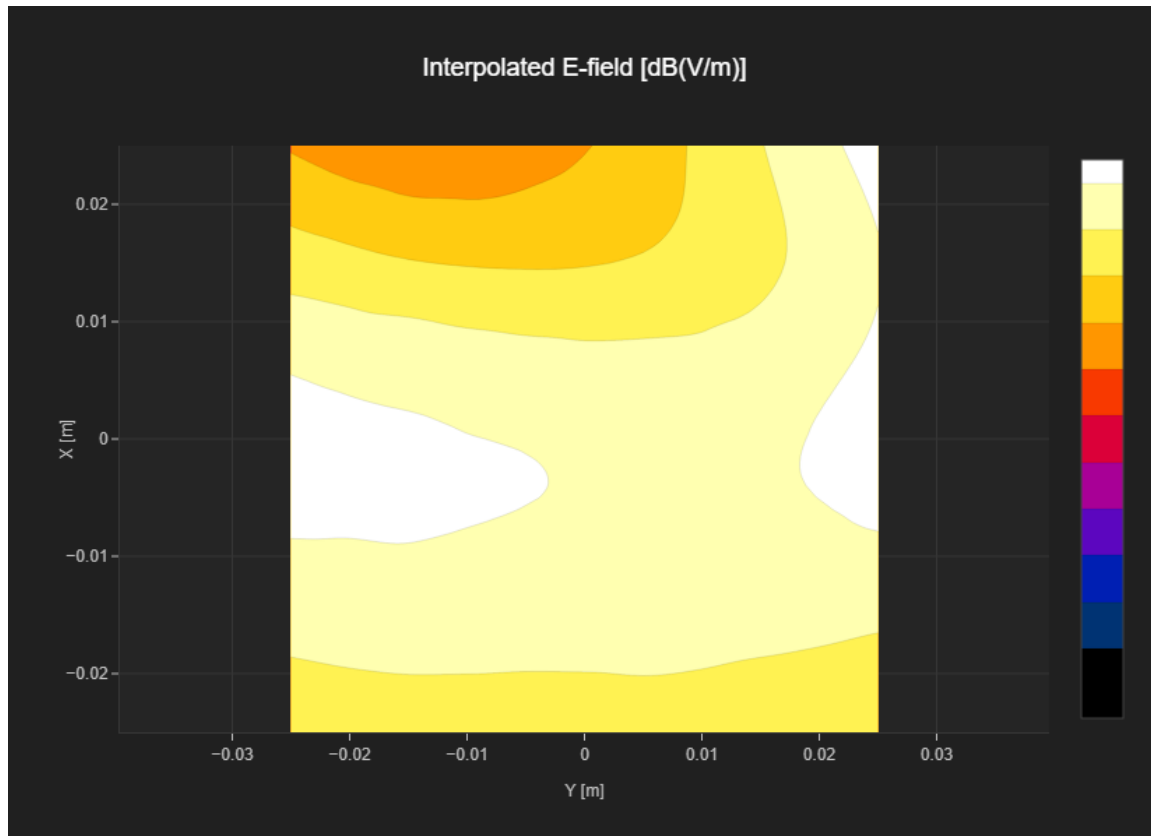
MIF 1.15
 Channel | Frequency [MHz] 512 | 1850.2
 Communication Systems' Name GPRS-FDD (TDMA, GMSK, TN 0-1)

Grid Settings

Extent X [mm]	50.0	Step X [mm]	10.0
Extent Y [mm]	50.0	Step Y [mm]	10.0
Distance [mm]	15.0		

Results

E _{max} [dBV/m]	25.24	E _{avg 50x50 Max} [dBV/m]	23.11
Drift [dB]	0.07	RFail [dBV/m]	24.26



PCS 1900 RF Interference Potential Test Report

Hardware Setup

Probe | Calibration Date EF3DV3 - SN4028 | September 04, 2023
DAE | Calibration Date DAE4 Sn1546 | March 11, 2024
Software Version 1.2.0.1713

Communication Systems

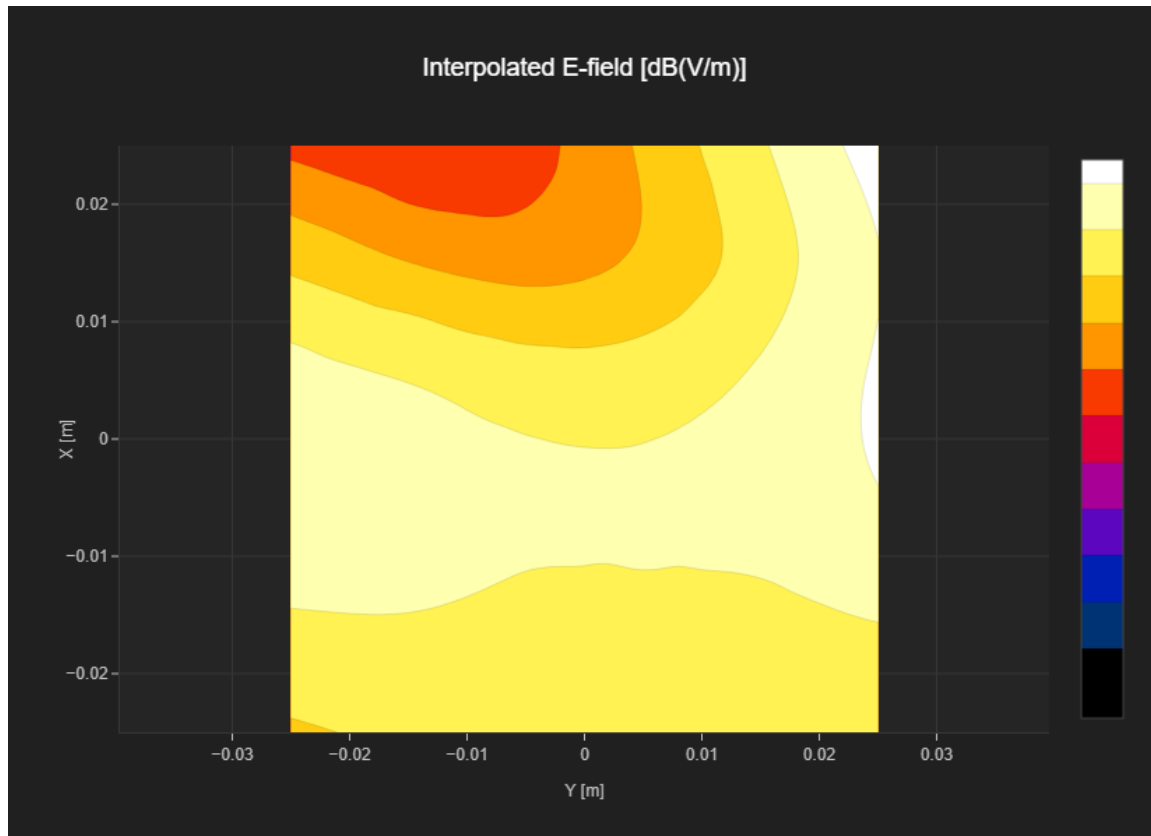
MIF 1.15
Channel | Frequency [MHz] 661 | 1880.0
Communication Systems' Name GPRS-FDD (TDMA, GMSK, TN 0-1)

Grid Settings

Extent X [mm]	50.0	Step X [mm]	10.0
Extent Y [mm]	50.0	Step Y [mm]	10.0
Distance [mm]	15.0		

Results

E _{max} [dBV/m]	25.35	E _{avg 50x50 Max} [dBV/m]	22.18
Drift [dB]	-0.09	RFail [dBV/m]	23.33



PCS 1900 RF Interference Potential Test Report

Hardware Setup

Probe | Calibration Date EF3DV3 - SN4028 | September 04, 2023
 DAE | Calibration Date DAE4 Sn1546 | March 11, 2024
 Software Version 1.2.0.1713

Communication Systems

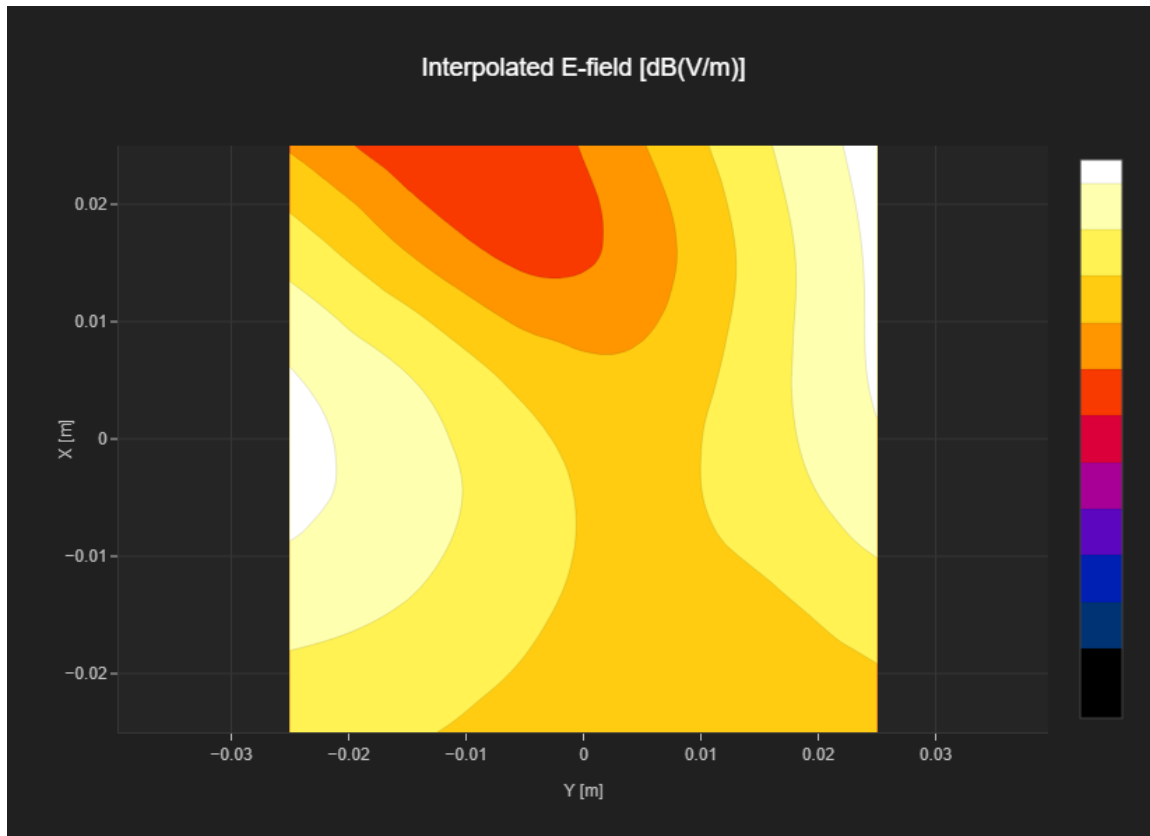
MIF 1.15
 Channel | Frequency [MHz] 810 | 1909.8
 Communication Systems' Name GPRS-FDD (TDMA, GMSK, TN 0-1)

Grid Settings

Extent X [mm]	50.0	Step X [mm]	10.0
Extent Y [mm]	50.0	Step Y [mm]	10.0
Distance [mm]	15.0		

Results

E _{max} [dBV/m]	25.16	E _{avg 50x50 Max} [dBV/m]	21.25
Drift [dB]	0.32	RFail [dBV/m]	22.4



PCS 1900 RF Interference Potential Test Report

Hardware Setup

Probe | Calibration Date EF3DV3 - SN4028 | September 04, 2023
 DAE | Calibration Date DAE4 Sn1546 | March 11, 2024
 Software Version 1.2.0.1713

Communication Systems

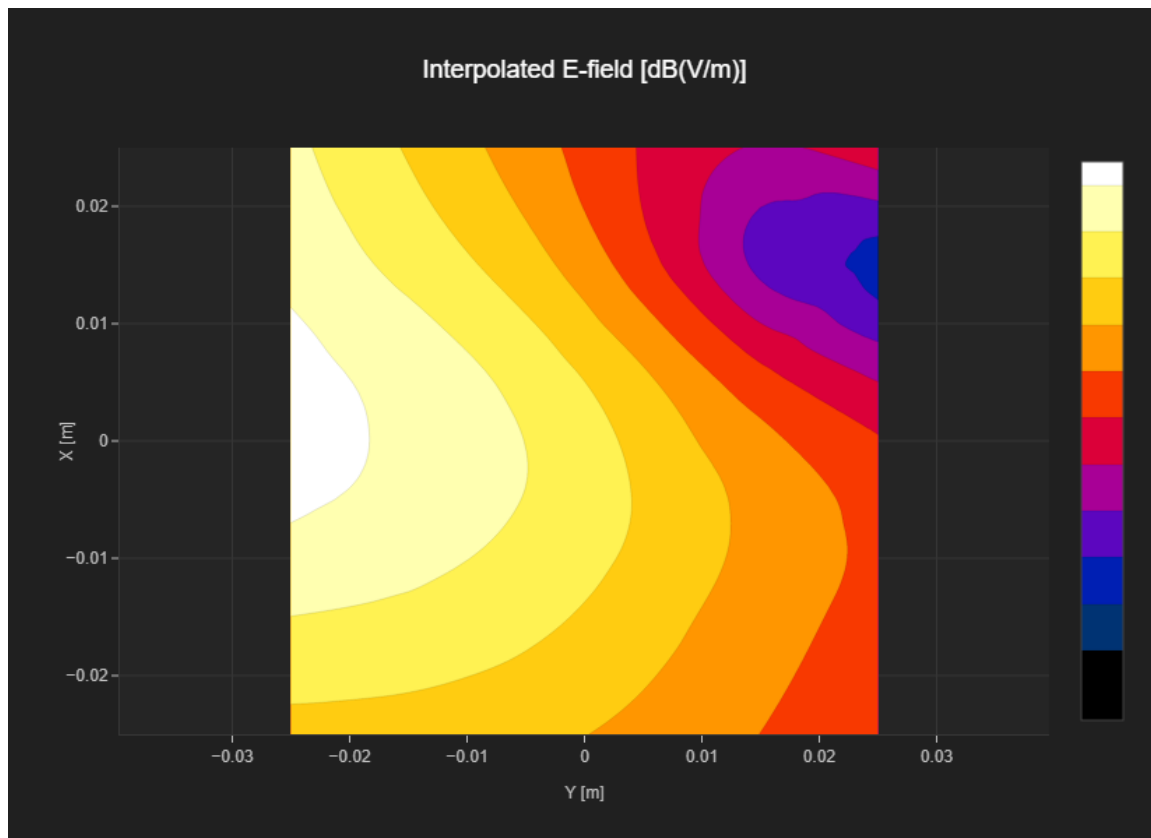
MIF 3.8
 Channel | Frequency [MHz] 512 | 1850.2
 Communication Systems' Name GPRS-FDD (TDMA, GMSK, TN 0)

Grid Settings

Extent X [mm]	50.0	Step X [mm]	10.0
Extent Y [mm]	50.0	Step Y [mm]	10.0
Distance [mm]	15.0		

Results

E _{max} [dBV/m]	26.6	E _{avg 50x50 Max} [dBV/m]	21.67
Drift [dB]	0.22	RFail [dBV/m]	25.47



PCS 1900 RF Interference Potential Test Report

Hardware Setup

Probe | Calibration Date EF3DV3 - SN4028 | September 04, 2023
DAE | Calibration Date DAE4 Sn1546 | March 11, 2024
Software Version 1.2.0.1713

Communication Systems

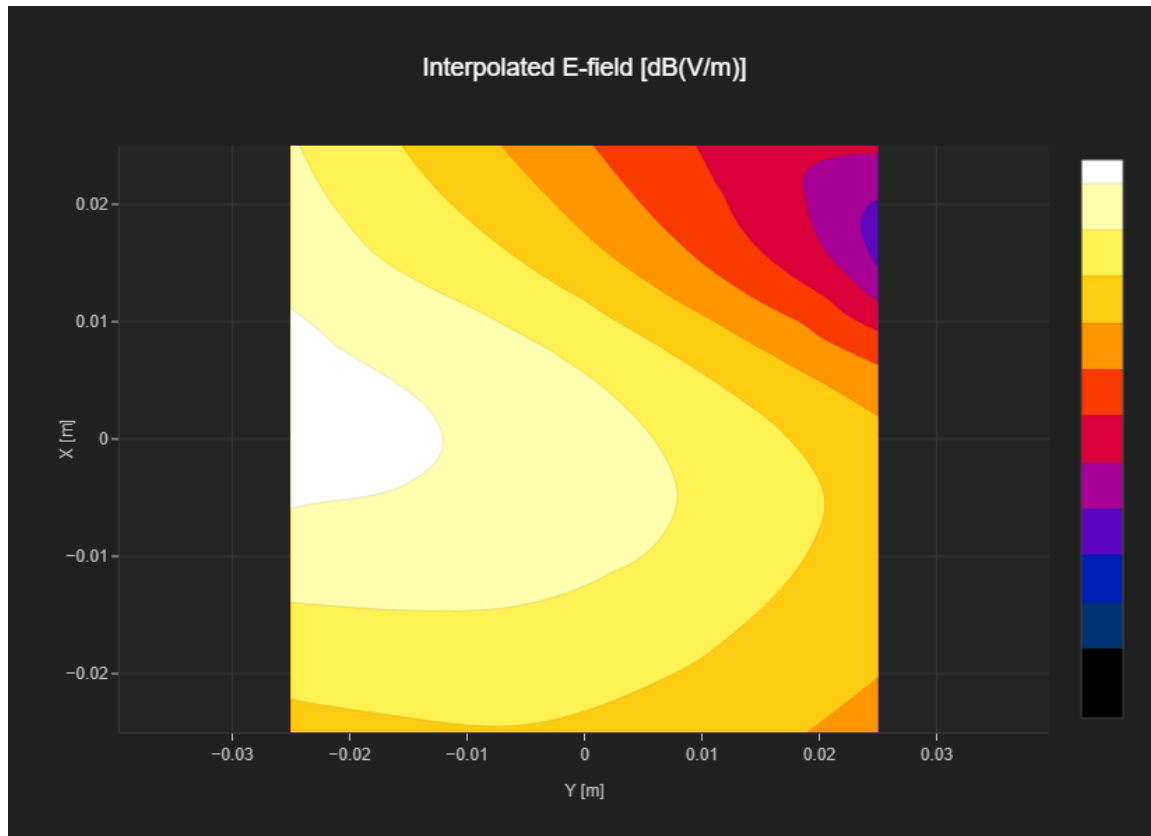
MIF 3.8
Channel | Frequency [MHz] 661 | 1880.0
Communication Systems' Name GPRS-FDD (TDMA, GMSK, TN 0)

Grid Settings

Extent X [mm]	50.0	Step X [mm]	10.0
Extent Y [mm]	50.0	Step Y [mm]	10.0
Distance [mm]	15.0		

Results

E _{max} [dBV/m]	26.81	E _{avg 50x50 Max} [dBV/m]	23.22
Drift [dB]	-0.02	RFail [dBV/m]	27.02



PCS 1900 RF Interference Potential Test Report

Hardware Setup

Probe | Calibration Date EF3DV3 - SN4028 | September 04, 2023
DAE | Calibration Date DAE4 Sn1546 | March 11, 2024
Software Version 1.2.0.1713

Communication Systems

MIF 3.8
Channel | Frequency [MHz] 810 | 1909.8
Communication Systems' Name GPRS-FDD (TDMA, GMSK, TN 0)

Grid Settings

Extent X [mm]	50.0	Step X [mm]	10.0
Extent Y [mm]	50.0	Step Y [mm]	10.0
Distance [mm]	15.0		

Results

E _{max} [dBV/m]	23.98	E _{avg 50x50 Max} [dBV/m]	21.43
Drift [dB]	-0.02	RFail [dBV/m]	25.23

