

System Performance Check Report for D2450V2 - SN706

Exposure Conditions

Frequency [MHz] Channel Number	2450.000 0	TSL Permittivity	39.8
Group UID	CW 0--	TSL Conductivity [S/m]	1.81
Conversion Factor	6.96	Phantom Section TSL	Flat HSL

Hardware Setup

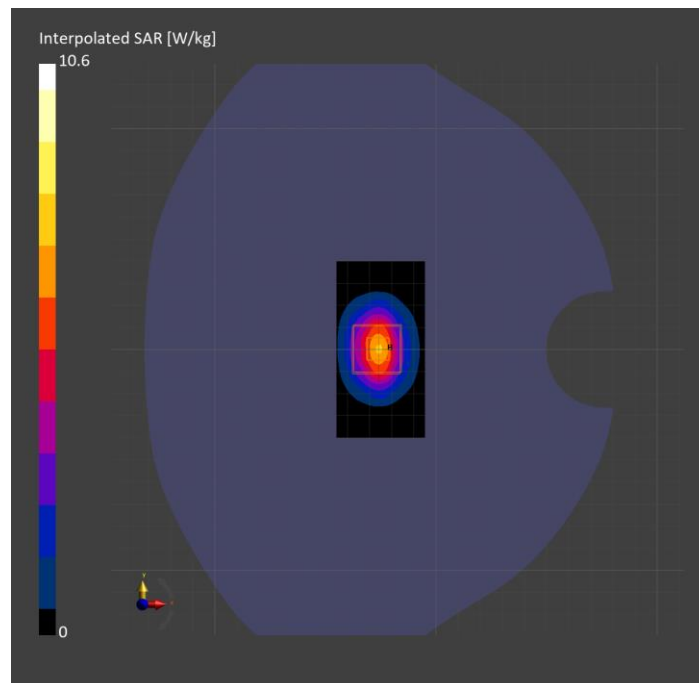
Probe Calibration Date	EX3DV4 - SN7779 2024-05-10	Phantom	Twin-SAM V8.0 (30deg probe tilt)
DAE Calibration Date	DAE4 Sn1439 2024-04-24	TSL Type	HBBL-600-10000
Software Version	16.2.4.2524		

Scans Setup

	Area Scan	Zoom Scan
Grid Extents [mm]	40.0 x 80.0	30.0 x 30.0 x 30.0
Grid Steps [mm]	10.0 x 10.0	5.0 x 5.0 x 1.5
Sensor Surface [mm]	3.0	1.4
Graded Grid	N/A	Yes
M2/M1 [%]		81.2
Dist 3dB Peak [mm]		9.1

Measurement Results

	Area Scan	Zoom Scan
psSAR1g [W/Kg]	5.49	5.36
psSAR10g [W/Kg]	2.55	2.54
Power Drift [dB]	N/A	-0.08



System Performance Check Report for D6.5GHzV2 - SN1033

Exposure Conditions

Frequency [MHz] Channel Number	6500.000 0	TSL Permittivity	33.6
Group UID	CW 0--	TSL Conductivity [S/m]	6.24
Conversion Factor	4.63	Phantom Section TSL	Flat HSL

Hardware Setup

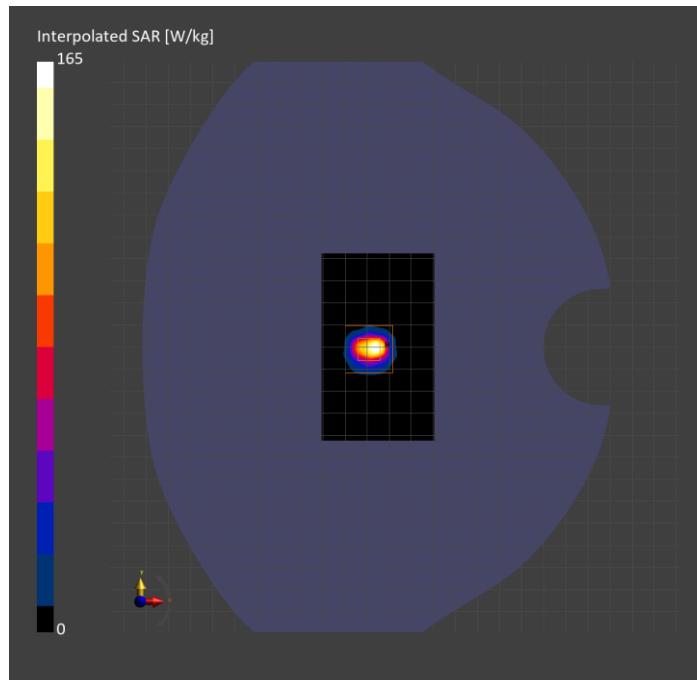
Probe Calibration Date	EX3DV4 - SN7587 2024-04-15	Phantom	Twin-SAM V8.0 (30deg probe tilt)
DAE Calibration Date	DAE4 Sn1797 2024-05-02	TSL Type	HBBL-600-10000
Software Version	16.2.4.2524		

Scans Setup

	Area Scan	Zoom Scan
Grid Extents [mm]	51.0 x 85.0	22.0 x 22.0 x 22.0
Grid Steps [mm]	8.5 x 8.5	3.4 x 3.4 x 1.4
Sensor Surface [mm]	3.0	1.4
Graded Grid	N/A	Yes
M2/M1 [%]		51.0
Dist 3dB Peak [mm]		4.6

Measurement Results

	Area Scan	Zoom Scan	APD
psSAR1g [W/Kg]	18.5	24.8	N/A
psSAR8g [W/Kg]	4.79	5.52	N/A
psSAR10g [W/Kg]	3.98	4.52	N/A
psAPD (4.0cm ² , sq.) [W/m ²]	N/A	N/A	110
Power Drift [dB]	N/A	-0.04	N/A



System Performance Check Report for D5GHzV2 - SN1003

Exposure Conditions

Frequency [MHz] Channel Number	5750.000 0	TSL Permittivity	33.7
Group UID	CW 0--	TSL Conductivity [S/m]	5.04
Conversion Factor	5.23	Phantom Section TSL	Flat HSL

Hardware Setup

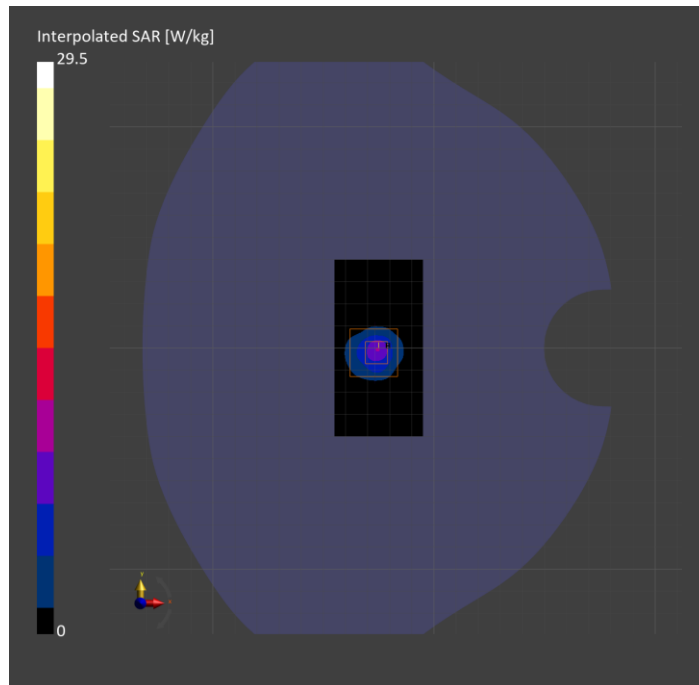
Probe Calibration Date	EX3DV4 - SN7501 2024-03-14	Phantom	Twin-SAM V8.0 (30deg probe tilt)
DAE Calibration Date	DAE4 Sn1357 2024-01-09	TSL Type	HBBL-600-10000
Software Version	16.2.4.2524		

Scans Setup

	Area Scan	Zoom Scan
Grid Extents [mm]	40.0 x 80.0	22.0 x 22.0 x 22.0
Grid Steps [mm]	10.0 x 10.0	4.0 x 4.0 x 1.4
Sensor Surface [mm]	3.0	1.4
Graded Grid	N/A	Yes
M2/M1 [%]		61.1
Dist 3dB Peak [mm]		7.6

Measurement Results

	Area Scan	Zoom Scan
psSAR1g [W/Kg]	6.49	7.22
psSAR10g [W/Kg]	1.93	2.12
Power Drift [dB]	N/A	0.05



System Performance Check Report for D2300V2 - SN1058

Exposure Conditions

Frequency [MHz] Channel Number	2300.000 0	TSL Permittivity	41.7
Group UID	CW 0--	TSL Conductivity [S/m]	1.70
Conversion Factor	7.29	Phantom Section TSL	Flat HSL

Hardware Setup

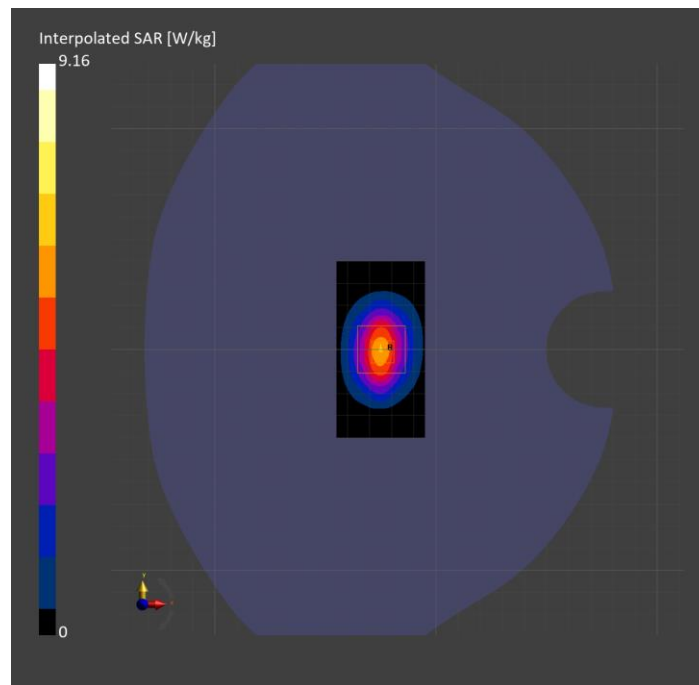
Probe Calibration Date	EX3DV4 - SN7482 2024-04-15	Phantom	Twin-SAM V5.0 (30deg probe tilt)
DAE Calibration Date	DAE4 Sn1239 2024-03-06	TSL Type	HBBL-600-10000
Software Version	16.2.4.2524		

Scans Setup

	Area Scan	Zoom Scan
Grid Extents [mm]	40.0 x 80.0	30.0 x 30.0 x 30.0
Grid Steps [mm]	10.0 x 10.0	5.0 x 5.0 x 1.5
Sensor Surface [mm]	3.0	1.4
Graded Grid	N/A	Yes
M2/M1 [%]		81.9
Dist 3dB Peak [mm]		9.0

Measurement Results

	Area Scan	Zoom Scan
psSAR1g [W/Kg]	4.68	4.62
psSAR10g [W/Kg]	2.20	2.22
Power Drift [dB]	N/A	-0.15



System Performance Check Report for D2450V2 - SN748

Exposure Conditions

Frequency [MHz] Channel Number	2450.000 0	TSL Permittivity	38.6
Group UID	CW 0--	TSL Conductivity [S/m]	1.81
Conversion Factor	7.3	Phantom Section TSL	Flat HSL

Hardware Setup

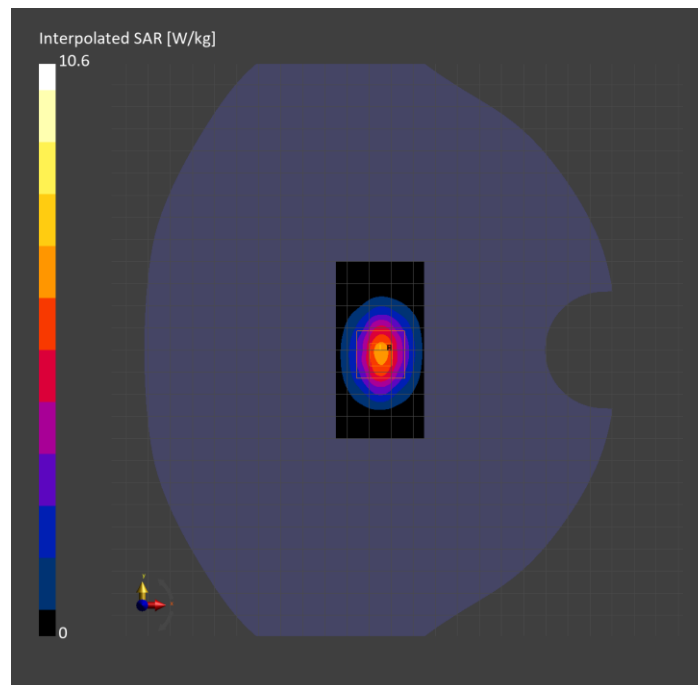
Probe Calibration Date	EX3DV4 - SN7850 2023-10-27	Phantom	Twin-SAM V8.0 (30deg probe tilt)
DAE Calibration Date	DAE4 Sn1673 2024-05-13	TSL Type	HBBL-600-10000
Software Version	16.2.4.2524		

Scans Setup

	Area Scan	Zoom Scan
Grid Extents [mm]	40.0 x 80.0	30.0 x 30.0 x 30.0
Grid Steps [mm]	10.0 x 10.0	5.0 x 5.0 x 1.5
Sensor Surface [mm]	3.0	1.4
Graded Grid	N/A	Yes
M2/M1 [%]		79.9
Dist 3dB Peak [mm]		9.0

Measurement Results

	Area Scan	Zoom Scan
psSAR1g [W/Kg]	5.17	5.08
psSAR10g [W/Kg]	2.40	2.36
Power Drift [dB]	N/A	-0.02



System Performance Check Report for D1900V2 - SN5d140

Exposure Conditions

Frequency [MHz] Channel Number	1900.000 0	TSL Permittivity	40.1
Group UID	CW 0--	TSL Conductivity [S/m]	1.45
Conversion Factor	7.55	Phantom Section TSL	Flat HSL

Hardware Setup

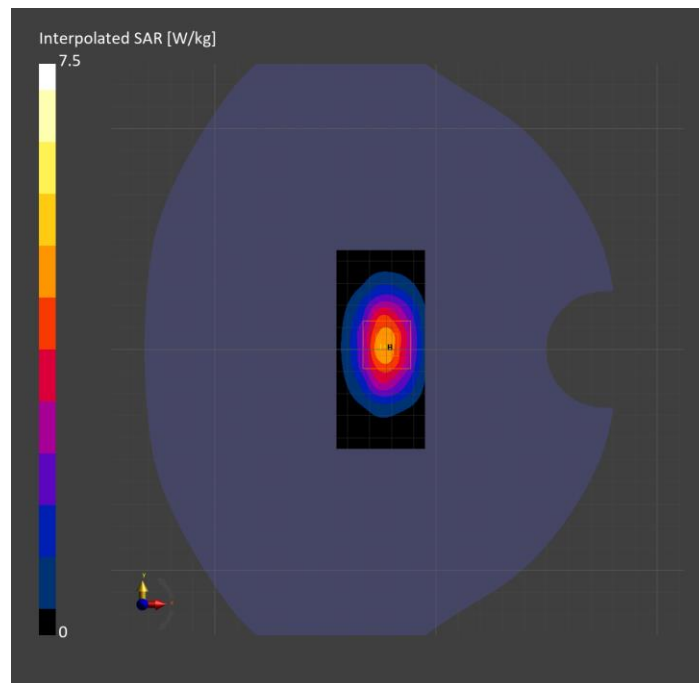
Probe Calibration Date	EX3DV4 - SN7448 2024-02-07	Phantom	Twin-SAM V8.0 (30deg probe tilt)
DAE Calibration Date	DAE4 Sn1784 2024-05-02	TSL Type	HBBL-600-10000
Software Version	16.2.4.2524		

Scans Setup

	Area Scan	Zoom Scan
Grid Extents [mm]	40.0 x 90.0	30.0 x 30.0 x 30.0
Grid Steps [mm]	10.0 x 15.0	6.0 x 6.0 x 1.5
Sensor Surface [mm]	3.0	1.4
Graded Grid	N/A	Yes
M2/M1 [%]		83.1
Dist 3dB Peak [mm]		9.9

Measurement Results

	Area Scan	Zoom Scan
psSAR1g [W/Kg]	4.01	4.08
psSAR10g [W/Kg]	2.11	2.12
Power Drift [dB]	N/A	-0.02



System Performance Check Report for 5G Source 30GHz - 1117

Exposure Conditions

Band	Validation band	Phantom Section	5G
Frequency [MHz] Channel Number	30000.0 0	Conversion Factor	1.0
Group UID	CW, 0--	Position Test Distance [mm]	FRONT 5.55

Hardware Setup

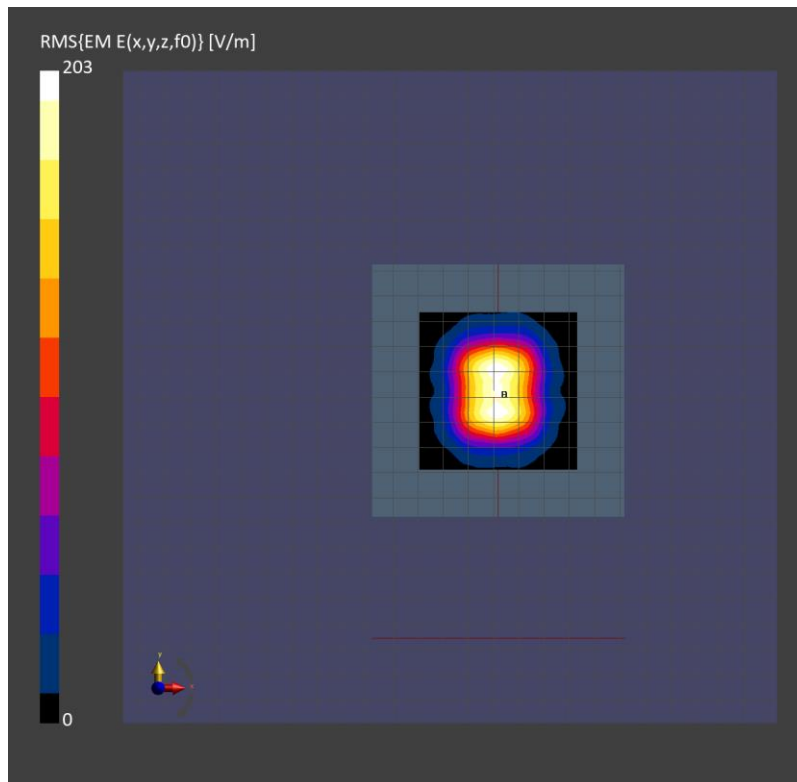
Probe Calibration Date	EUmmWV4 - SN9589_F1-55GHz 2023-09-05	Phantom	mmWave xxxx
DAE Calibration Date	DAE4ip Sn1621 2024-04-12	Medium	Air -
Software Version	3.2.0.1840		

Scan Setup

Scan Type	5G Scan	Grid Extents [mm]	60.0 x 60.0
Grid Steps [lambda]	0.25 x 0.25	Sensor Surface [mm]	5.55

Measurement Results

Avg. Area [cm ²]	4.00
psPDn+ [W/m ²]	76.4
psPDtot+ [W/m ²]	77.9
psPDmod+ [W/m ²]	78.1
E _{max} [V/m]	198
H _{max} [A/m]	0.520
Power Drift [dB]	-0.17



System Performance Check Report for 5G Source 10GHz - 1015

Exposure Conditions

Band	Validation band	Phantom Section	5G
Frequency [MHz] Channel Number	10000.0 0	Conversion Factor	1.0
Group UID	CW, 0--	Position Test Distance [mm]	FRONT 10.00

Hardware Setup

Probe Calibration Date	EUmmWV4 - SN9619_F1-55GHz 2024-03-08	Phantom	mmWave xxxx
DAE Calibration Date	DAE4 Sn1472 2024-01-16	Medium	Air -
Software Version	3.2.0.1840		

Scan Setup

Scan Type	5G Scan	Grid Extents [mm]	120.0 x 120.0
Grid Steps [lambda]	0.25 x 0.25	Sensor Surface [mm]	10.0

Measurement Results

Avg. Area [cm ²]	4.00
psPDn+ [W/m ²]	29.2
psPDtot+ [W/m ²]	29.3
psPDmod+ [W/m ²]	29.5
E _{max} [V/m]	111
H _{max} [A/m]	0.305
Power Drift [dB]	0.01

