

System Performance Check Report for D2300V2 - SN1058

Exposure Conditions

Frequency [MHz] Channel Number	2300.000 0	TSL Permittivity	38.0
Group UID	CW 0--	TSL Conductivity [S/m]	1.57
Conversion Factor	6.54	Phantom Section TSL	Flat HSL

Hardware Setup

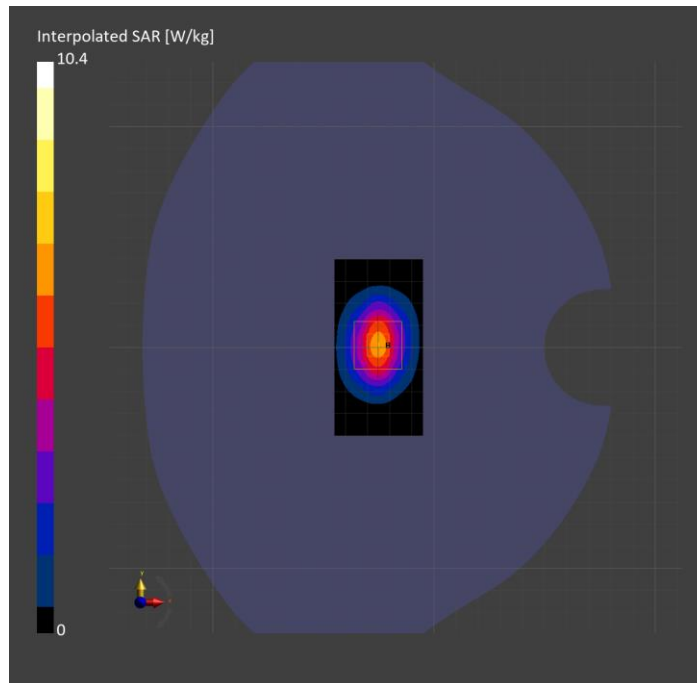
Probe Calibration Date	EX3DV4 - SN3686 2024-01-12	Phantom	Twin-SAM V4.0 (30deg probe tilt)
DAE Calibration Date	DAE4 Sn1547 2024-04-10	TSL Type	HBBL-600-10000
Software Version	16.2.4.2524		

Scans Setup

	Area Scan	Zoom Scan
Grid Extents [mm]	40.0 x 80.0	30.0 x 30.0 x 30.0
Grid Steps [mm]	10.0 x 10.0	5.0 x 5.0 x 1.5
Sensor Surface [mm]	3.0	1.4
Graded Grid	N/A	Yes
M2/M1 [%]		81.0
Dist 3dB Peak [mm]		9.0

Measurement Results

	Area Scan	Zoom Scan
psSAR1g [W/Kg]	5.19	5.24
psSAR10g [W/Kg]	2.46	2.57
Power Drift [dB]	N/A	0.01



System Performance Check Report for D2600V2 - SN1006

Exposure Conditions

Frequency [MHz] Channel Number	2600.000 0	TSL Permittivity	41.1
Group UID	CW 0--	TSL Conductivity [S/m]	1.89
Conversion Factor	6.46	Phantom Section TSL	Flat HSL

Hardware Setup

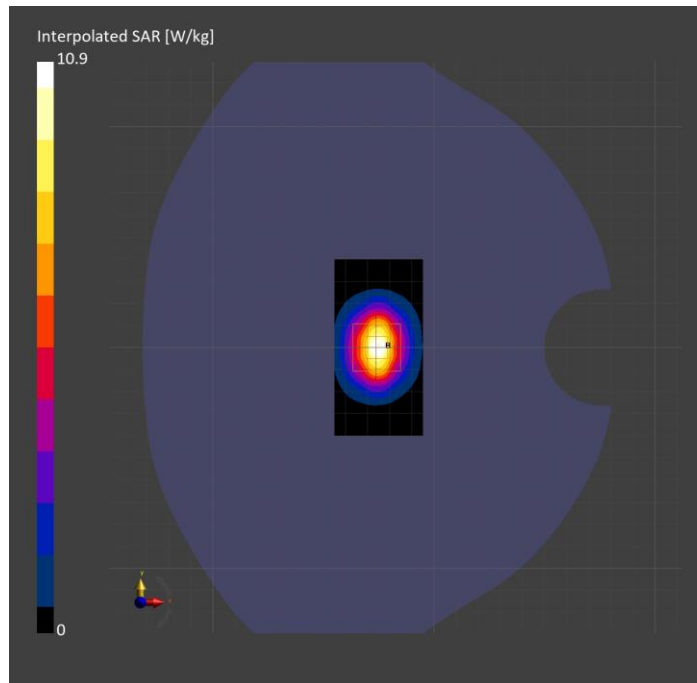
Probe Calibration Date	EX3DV4 - SN3686 2024-01-12	Phantom	Twin-SAM V4.0 (30deg probe tilt)
DAE Calibration Date	DAE4 Sn1547 2024-04-10	TSL Type	HBBL-600-10000
Software Version	16.2.4.2524		

Scans Setup

	Area Scan	Zoom Scan
Grid Extents [mm]	40.0 x 80.0	30.0 x 30.0 x 30.0
Grid Steps [mm]	10.0 x 10.0	5.0 x 5.0 x 1.5
Sensor Surface [mm]	3.0	1.4
Graded Grid	N/A	Yes
M2/M1 [%]		79.4
Dist 3dB Peak [mm]		9.0

Measurement Results

	Area Scan	Zoom Scan
psSAR1g [W/Kg]	5.03	5.09
psSAR10g [W/Kg]	2.23	2.30
Power Drift [dB]	N/A	-0.09



System Performance Check Report for D2300V2 - SN1058

Exposure Conditions

Frequency [MHz] Channel Number	2300.000 0	TSL Permittivity	39.9
Group UID	CW 0--	TSL Conductivity [S/m]	1.74
Conversion Factor	7.82	Phantom Section TSL	Flat HSL

Hardware Setup

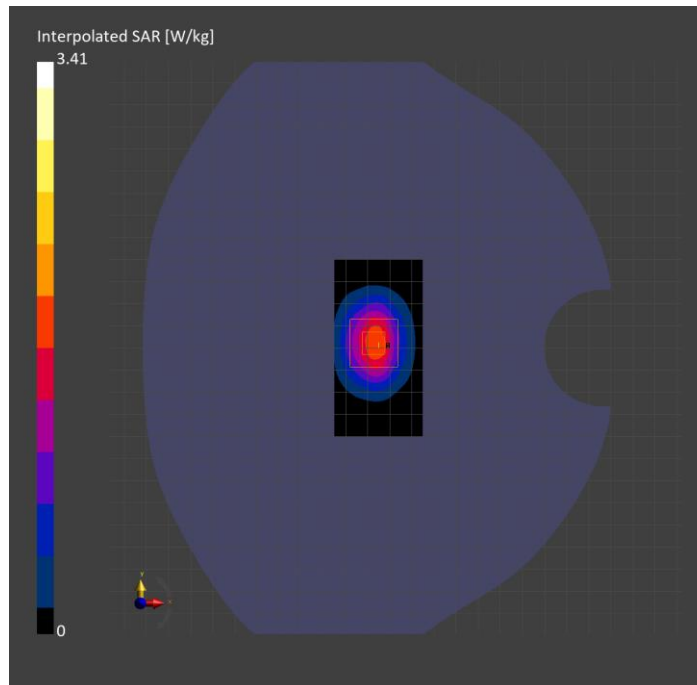
Probe Calibration Date	EX3DV4 - SN3885 2023-10-12	Phantom	Twin-SAM V8.0 (30deg probe tilt)
DAE Calibration Date	DAE4 Sn1359 2024-01-16	TSL Type	HBBL-600-10000
Software Version	16.2.4.2524		

Scans Setup

	Area Scan	Zoom Scan
Grid Extents [mm]	40.0 x 80.0	30.0 x 30.0 x 30.0
Grid Steps [mm]	10.0 x 10.0	5.0 x 5.0 x 1.5
Sensor Surface [mm]	3.0	1.4
Graded Grid	N/A	Yes
M2/M1 [%]		78.1
Dist 3dB Peak [mm]		9.1

Measurement Results

	Area Scan	Zoom Scan
psSAR1g [W/Kg]	1.55	1.63
psSAR10g [W/Kg]	0.757	0.780
Power Drift [dB]	N/A	0.01



System Performance Check Report for D2600V2 - SN1006

Exposure Conditions

Frequency [MHz] Channel Number	2600.000 0	TSL Permittivity	41.4
Group UID	CW 0--	TSL Conductivity [S/m]	1.94
Conversion Factor	7.64	Phantom Section TSL	Flat HSL

Hardware Setup

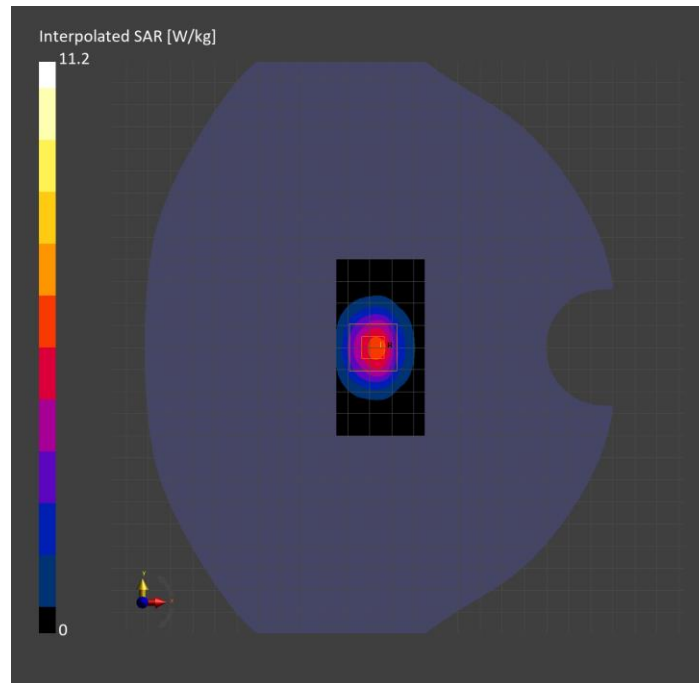
Probe Calibration Date	EX3DV4 - SN3885 2023-10-12	Phantom	Twin-SAM V8.0 (30deg probe tilt)
DAE Calibration Date	DAE4 Sn1359 2024-01-16	TSL Type	HBBL-600-10000
Software Version	16.2.4.2524		

Scans Setup

	Area Scan	Zoom Scan
Grid Extents [mm]	40.0 x 80.0	30.0 x 30.0 x 30.0
Grid Steps [mm]	10.0 x 10.0	5.0 x 5.0 x 1.5
Sensor Surface [mm]	3.0	1.4
Graded Grid	N/A	Yes
M2/M1 [%]		77.4
Dist 3dB Peak [mm]		9.0

Measurement Results

	Area Scan	Zoom Scan
psSAR1g [W/Kg]	4.81	5.12
psSAR10g [W/Kg]	2.23	2.30
Power Drift [dB]	N/A	0.00



System Performance Check Report for D2600V2 - SN1036

Exposure Conditions

Frequency [MHz] Channel Number	2600.000 0	TSL Permittivity	40.5
Group UID	CW 0--	TSL Conductivity [S/m]	1.94
Conversion Factor	7.64	Phantom Section TSL	Flat HSL

Hardware Setup

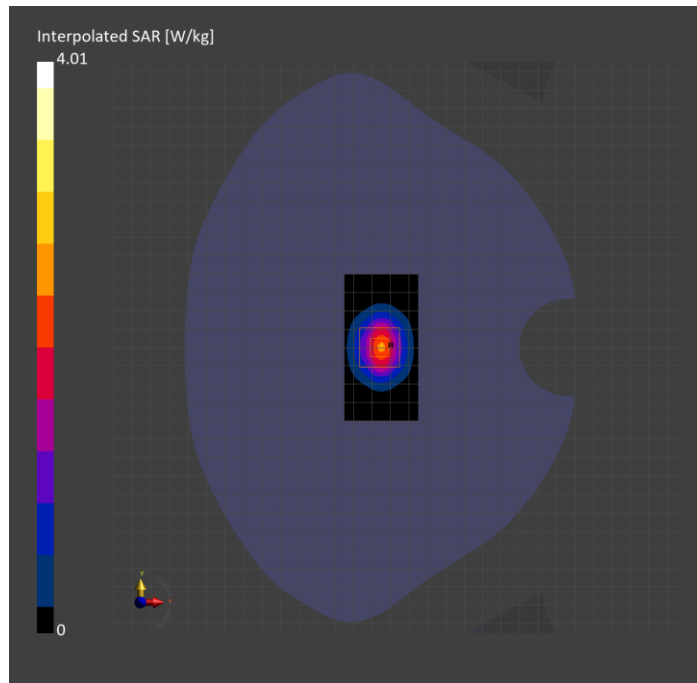
Probe Calibration Date	EX3DV4 - SN3885 2023-10-12	Phantom	Twin-SAM V8.0 (30deg probe tilt)
DAE Calibration Date	DAE4 Sn1359 2024-01-16	TSL Type	HBBL-600-10000
Software Version	16.2.4.2524		

Scans Setup

	Area Scan	Zoom Scan
Grid Extents [mm]	40.0 x 80.0	30.0 x 30.0 x 30.0
Grid Steps [mm]	10.0 x 10.0	5.0 x 5.0 x 1.5
Sensor Surface [mm]	3.0	1.4
Graded Grid	N/A	Yes
M2/M1 [%]		77.7
Dist 3dB Peak [mm]		9.0

Measurement Results

	Area Scan	Zoom Scan
psSAR1g [W/Kg]	1.81	1.83
psSAR10g [W/Kg]	0.809	0.823
Power Drift [dB]	N/A	0.00



System Performance Check Report for D3700V2 - SN1110

Exposure Conditions

Frequency [MHz] Channel Number	3700.000 0	TSL Permittivity	38.3
Group UID	CW 0--	TSL Conductivity [S/m]	3.27
Conversion Factor	6.99	Phantom Section TSL	Flat HSL

Hardware Setup

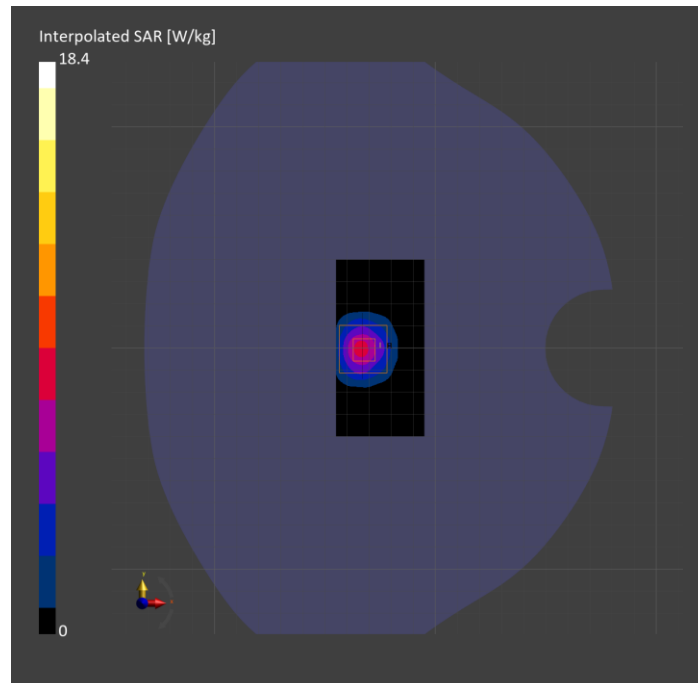
Probe Calibration Date	EX3DV4 - SN7356 2024-03-14	Phantom	Twin-SAM V5.0 (30deg probe tilt)
DAE Calibration Date	DAE4 Sn1259 2023-09-06	TSL Type	HBBL-600-10000
Software Version	16.2.4.2524		

Scans Setup

	Area Scan	Zoom Scan
Grid Extents [mm]	40.0 x 80.0	28.0 x 28.0 x 28.0
Grid Steps [mm]	10.0 x 10.0	5.0 x 5.0 x 1.4
Sensor Surface [mm]	3.0	1.4
Graded Grid	N/A	Yes
M2/M1 [%]		72.8
Dist 3dB Peak [mm]		8.0

Measurement Results

	Area Scan	Zoom Scan
psSAR1g [W/Kg]	5.94	6.64
psSAR10g [W/Kg]	2.30	2.43
Power Drift [dB]	N/A	-0.03



System Performance Check Report for D3500V2 - SN1060

Exposure Conditions

Frequency [MHz] Channel Number	3500.000 0	TSL Permittivity	35.8
Group UID	CW 0--	TSL Conductivity [S/m]	3.03
Conversion Factor	6.91	Phantom Section TSL	Flat HSL

Hardware Setup

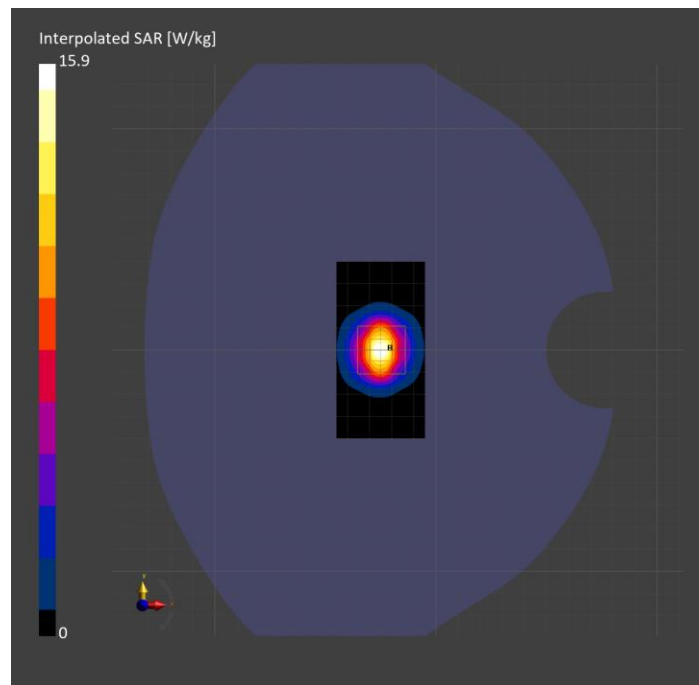
Probe Calibration Date	EX3DV4 - SN7356 2024-03-14	Phantom	Twin-SAM V5.0 (30deg probe tilt)
DAE Calibration Date	DAE4 Sn1259 2023-09-06	TSL Type	HBBL-600-10000
Software Version	16.2.4.2524		

Scans Setup

	Area Scan	Zoom Scan
Grid Extents [mm]	40.0 x 80.0	28.0 x 28.0 x 28.0
Grid Steps [mm]	10.0 x 10.0	5.0 x 5.0 x 1.4
Sensor Surface [mm]	3.0	1.4
Graded Grid	N/A	Yes
M2/M1 [%]		75.8
Dist 3dB Peak [mm]		8.0

Measurement Results

	Area Scan	Zoom Scan
psSAR1g [W/Kg]	6.12	6.14
psSAR10g [W/Kg]	2.30	2.32
Power Drift [dB]	N/A	-0.02



System Performance Check Report for D3900V2 - SN1102

Exposure Conditions

Frequency [MHz] Channel Number	3900.000 0	TSL Permittivity	35.2
Group UID	CW 0--	TSL Conductivity [S/m]	3.29
Conversion Factor	7.12	Phantom Section TSL	Flat HSL

Hardware Setup

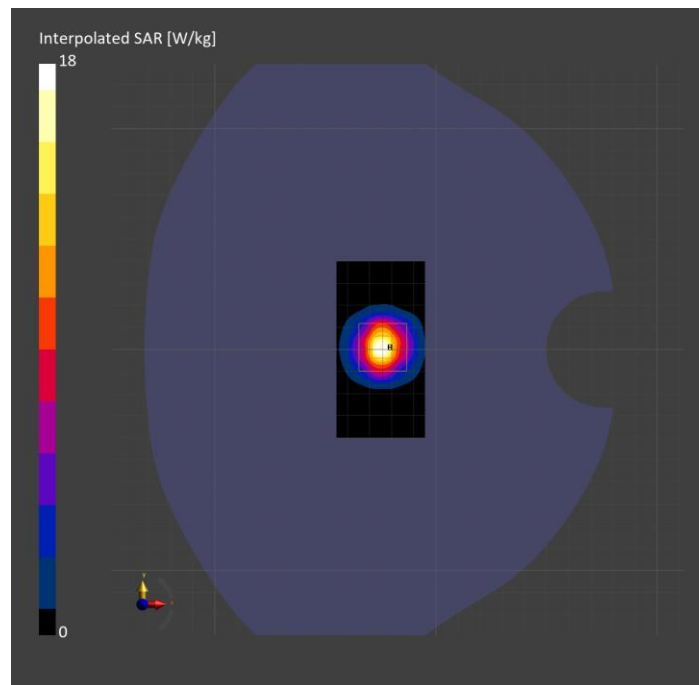
Probe Calibration Date	EX3DV4 - SN7356 2024-03-14	Phantom	Twin-SAM V5.0 (30deg probe tilt)
DAE Calibration Date	DAE4 Sn1259 2023-09-06	TSL Type	HBBL-600-10000
Software Version	16.2.4.2524		

Scans Setup

	Area Scan	Zoom Scan
Grid Extents [mm]	40.0 x 80.0	28.0 x 28.0 x 28.0
Grid Steps [mm]	10.0 x 10.0	5.0 x 5.0 x 1.4
Sensor Surface [mm]	3.0	1.4
Graded Grid	N/A	Yes
M2/M1 [%]		73.4
Dist 3dB Peak [mm]		8.1

Measurement Results

	Area Scan	Zoom Scan
psSAR1g [W/Kg]	6.13	6.26
psSAR10g [W/Kg]	2.15	2.17
Power Drift [dB]	N/A	-0.00



System Performance Check Report for D3700V2 - SN1110

Exposure Conditions

Frequency [MHz] Channel Number	3700.000 0	TSL Permittivity	39.4
Group UID	CW 0--	TSL Conductivity [S/m]	2.96
Conversion Factor	6.63	Phantom Section TSL	Flat HSL

Hardware Setup

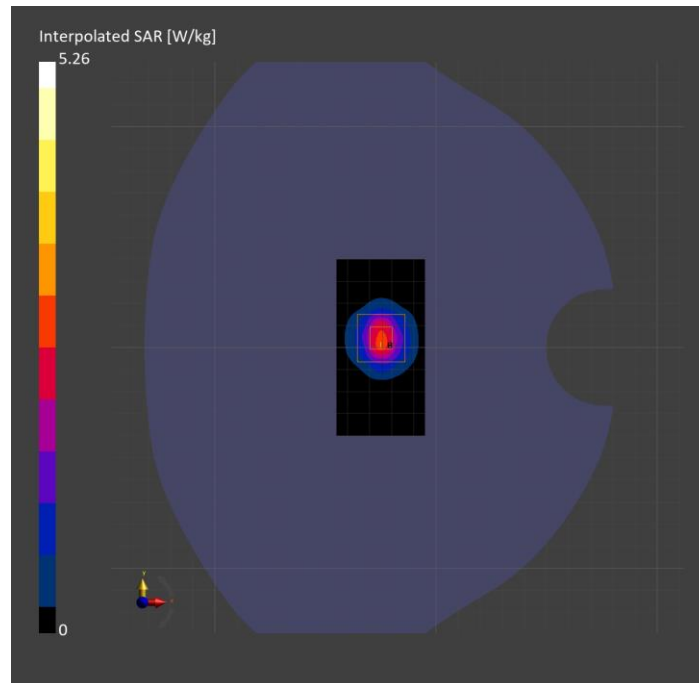
Probe Calibration Date	EX3DV4 - SN3990 2024-02-28	Phantom	Twin-SAM V5.0 (30deg probe tilt)
DAE Calibration Date	DAE4 Sn1540 2024-01-17	TSL Type	HBBL-600-10000
Software Version	16.2.4.2524		

Scans Setup

	Area Scan	Zoom Scan
Grid Extents [mm]	40.0 x 80.0	28.0 x 28.0 x 28.0
Grid Steps [mm]	10.0 x 10.0	5.0 x 5.0 x 1.4
Sensor Surface [mm]	3.0	1.4
Graded Grid	N/A	Yes
M2/M1 [%]		78.3
Dist 3dB Peak [mm]		8.0

Measurement Results

	Area Scan	Zoom Scan
psSAR1g [W/Kg]	2.04	2.08
psSAR10g [W/Kg]	0.747	0.774
Power Drift [dB]	N/A	-0.00



System Performance Check Report for D3900V2 - SN1102

Exposure Conditions

Frequency [MHz] Channel Number	3900.000 0	TSL Permittivity	39.0
Group UID	CW 0--	TSL Conductivity [S/m]	3.15
Conversion Factor	6.66	Phantom Section TSL	Flat HSL

Hardware Setup

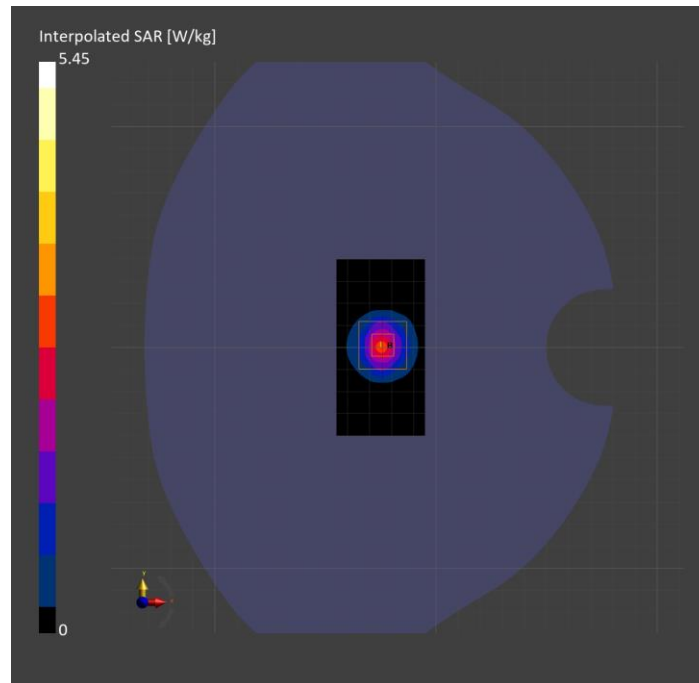
Probe Calibration Date	EX3DV4 - SN3990 2024-02-28	Phantom	Twin-SAM V5.0 (30deg probe tilt)
DAE Calibration Date	DAE4 Sn1540 2024-01-17	TSL Type	HBBL-600-10000
Software Version	16.2.4.2524		

Scans Setup

	Area Scan	Zoom Scan
Grid Extents [mm]	40.0 x 80.0	28.0 x 28.0 x 28.0
Grid Steps [mm]	10.0 x 10.0	5.0 x 5.0 x 1.4
Sensor Surface [mm]	3.0	1.4
Graded Grid	N/A	Yes
M2/M1 [%]		76.0
Dist 3dB Peak [mm]		8.1

Measurement Results

	Area Scan	Zoom Scan
psSAR1g [W/Kg]	1.96	1.99
psSAR10g [W/Kg]	0.678	0.708
Power Drift [dB]	N/A	0.02



System Performance Check Report for D3500V2 - SN1060

Exposure Conditions

Frequency [MHz] Channel Number	3500.000 0	TSL Permittivity	39.9
Group UID	CW 0--	TSL Conductivity [S/m]	2.73
Conversion Factor	6.75	Phantom Section TSL	Flat HSL

Hardware Setup

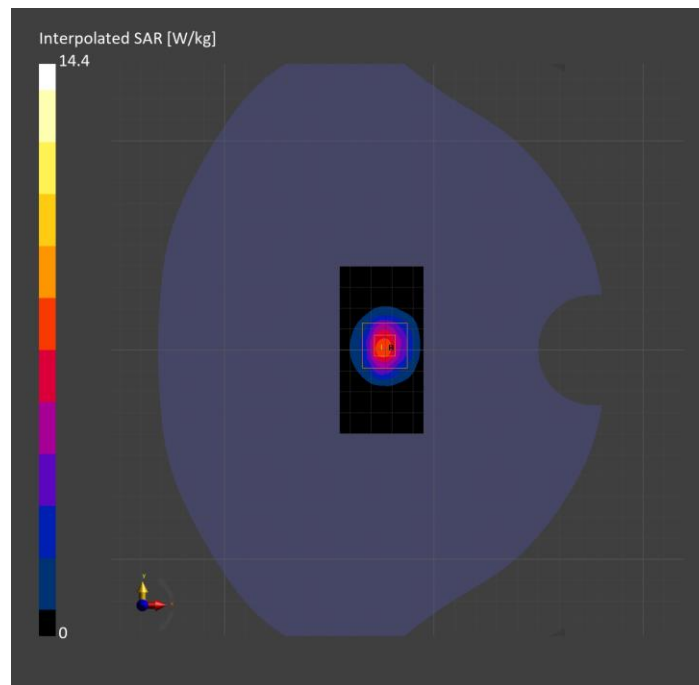
Probe Calibration Date	EX3DV4 - SN3990 2024-02-28	Phantom	Twin-SAM V5.0 (30deg probe tilt)
DAE Calibration Date	DAE4 Sn1540 2024-01-17	TSL Type	HBBL-600-10000
Software Version	16.2.4.2524		

Scans Setup

	Area Scan	Zoom Scan
Grid Extents [mm]	40.0 x 80.0	28.0 x 28.0 x 28.0
Grid Steps [mm]	10.0 x 10.0	5.0 x 5.0 x 1.4
Sensor Surface [mm]	3.0	1.4
Graded Grid	N/A	Yes
M2/M1 [%]		79.4
Dist 3dB Peak [mm]		8.3

Measurement Results

	Area Scan	Zoom Scan
psSAR1g [W/Kg]	5.91	5.95
psSAR10g [W/Kg]	2.25	2.31
Power Drift [dB]	N/A	-0.03



System Performance Check Report for D2600V2 - SN1006

Exposure Conditions

Frequency [MHz] Channel Number	2600.000 0	TSL Permittivity	39.9
Group UID	CW 0--	TSL Conductivity [S/m]	1.85
Conversion Factor	7.03	Phantom Section TSL	Flat HSL

Hardware Setup

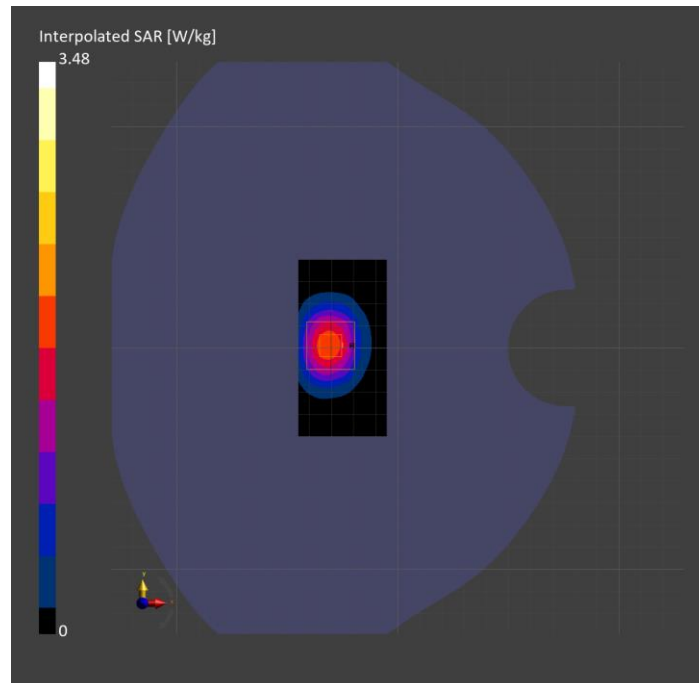
Probe Calibration Date	EX3DV4 - SN3990 2024-02-28	Phantom	Twin-SAM V5.0 (30deg probe tilt)
DAE Calibration Date	DAE4 Sn1540 2024-01-17	TSL Type	HBBL-600-10000
Software Version	16.2.4.2524		

Scans Setup

	Area Scan	Zoom Scan
Grid Extents [mm]	40.0 x 80.0	30.0 x 30.0 x 30.0
Grid Steps [mm]	10.0 x 10.0	5.0 x 5.0 x 1.5
Sensor Surface [mm]	3.0	1.4
Graded Grid	N/A	Yes
M2/M1 [%]		81.8
Dist 3dB Peak [mm]		9.0

Measurement Results

	Area Scan	Zoom Scan
psSAR1g [W/Kg]	1.56	1.69
psSAR10g [W/Kg]	0.745	0.768
Power Drift [dB]	N/A	-0.00



System Performance Check Report for D3700V2 - SN1110

Exposure Conditions

Frequency [MHz] Channel Number	3700.000 0	TSL Permittivity	39.5
Group UID	CW 0--	TSL Conductivity [S/m]	3.09
Conversion Factor	7.04	Phantom Section TSL	Flat HSL

Hardware Setup

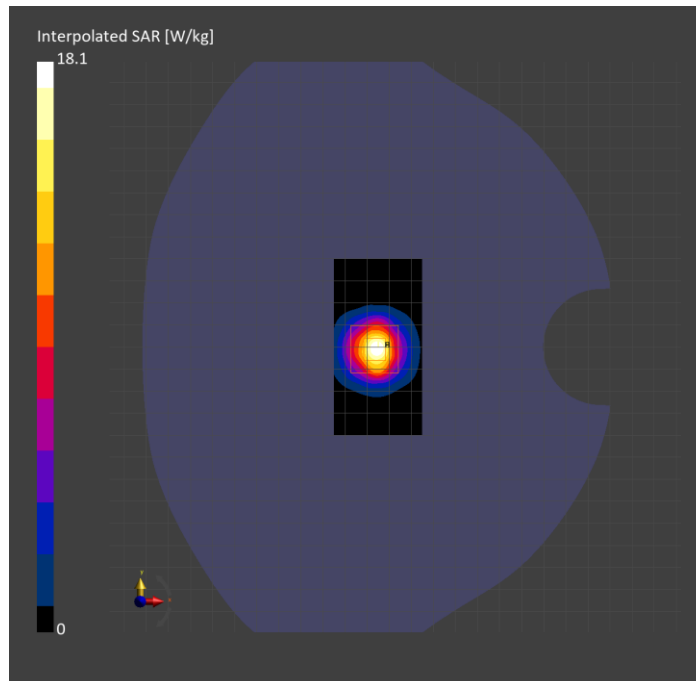
Probe Calibration Date	EX3DV4 - SN3991 2023-10-12	Phantom	Twin-SAM V5.0 (30deg probe tilt)
DAE Calibration Date	DAE4 Sn1380 2024-02-09	TSL Type	HBBL-600-10000
Software Version	16.2.4.2524		

Scans Setup

	Area Scan	Zoom Scan
Grid Extents [mm]	40.0 x 80.0	28.0 x 28.0 x 28.0
Grid Steps [mm]	10.0 x 10.0	5.0 x 5.0 x 1.4
Sensor Surface [mm]	3.0	1.4
Graded Grid	N/A	Yes
M2/M1 [%]		74.4
Dist 3dB Peak [mm]		8.0

Measurement Results

	Area Scan	Zoom Scan
psSAR1g [W/Kg]	6.38	6.67
psSAR10g [W/Kg]	2.39	2.47
Power Drift [dB]	N/A	-0.00



System Performance Check Report for D3500V2 - SN1060

Exposure Conditions

Frequency [MHz] Channel Number	3500.000 0	TSL Permittivity	39.0
Group UID	CW 0--	TSL Conductivity [S/m]	2.74
Conversion Factor	7.07	Phantom Section TSL	Flat HSL

Hardware Setup

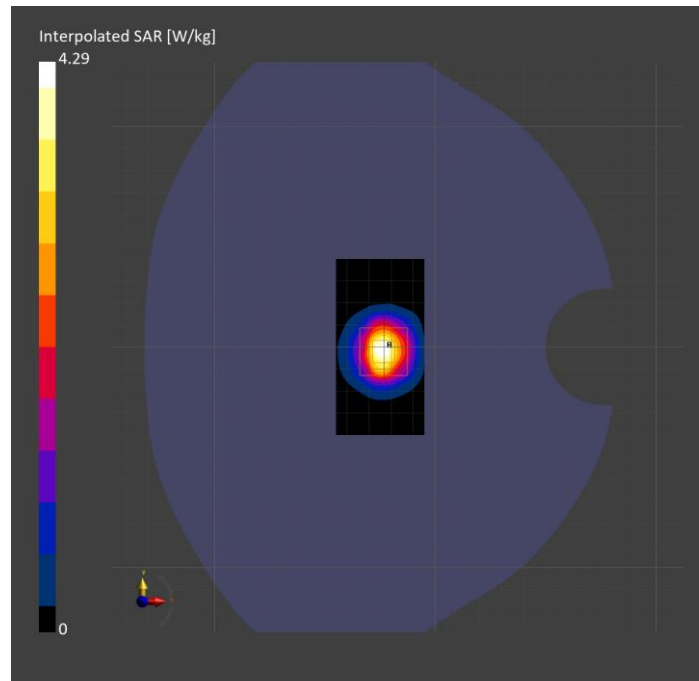
Probe Calibration Date	EX3DV4 - SN3991 2023-10-12	Phantom	Twin-SAM V5.0 (30deg probe tilt)
DAE Calibration Date	DAE4 Sn1380 2024-02-09	TSL Type	HBBL-600-10000
Software Version	16.2.4.2524		

Scans Setup

	Area Scan	Zoom Scan
Grid Extents [mm]	40.0 x 80.0	28.0 x 28.0 x 28.0
Grid Steps [mm]	10.0 x 10.0	5.0 x 5.0 x 1.4
Sensor Surface [mm]	3.0	1.4
Graded Grid	N/A	Yes
M2/M1 [%]		77.3
Dist 3dB Peak [mm]		8.6

Measurement Results

	Area Scan	Zoom Scan
psSAR1g [W/Kg]	1.71	1.69
psSAR10g [W/Kg]	0.657	0.652
Power Drift [dB]	N/A	0.02



System Performance Check Report for D3900V2 - SN1102

Exposure Conditions

Frequency [MHz] Channel Number	3900.000 0	TSL Permittivity	38.4
Group UID	CW 0--	TSL Conductivity [S/m]	3.11
Conversion Factor	6.82	Phantom Section TSL	Flat HSL

Hardware Setup

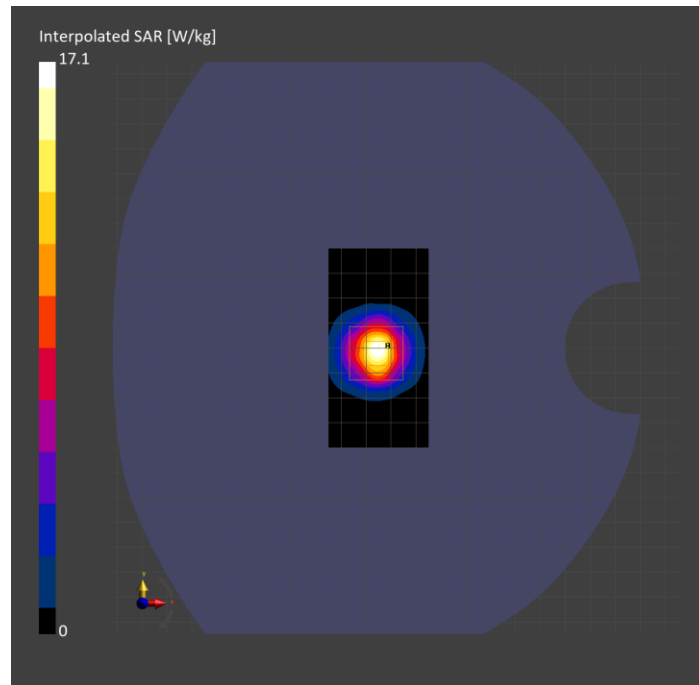
Probe Calibration Date	EX3DV4 - SN3991 2023-10-12	Phantom	Twin-SAM V5.0 (30deg probe tilt)
DAE Calibration Date	DAE4 Sn1380 2024-02-09	TSL Type	HBBL-600-10000
Software Version	16.2.4.2524		

Scans Setup

	Area Scan	Zoom Scan
Grid Extents [mm]	40.0 x 80.0	28.0 x 28.0 x 28.0
Grid Steps [mm]	10.0 x 10.0	5.0 x 5.0 x 1.4
Sensor Surface [mm]	3.0	1.4
Graded Grid	N/A	Yes
M2/M1 [%]		75.1
Dist 3dB Peak [mm]		8.0

Measurement Results

	Area Scan	Zoom Scan
psSAR1g [W/Kg]	6.12	6.30
psSAR10g [W/Kg]	2.16	2.24
Power Drift [dB]	N/A	0.00



System Performance Check Report for CLA-13 - SN1008

Exposure Conditions

Frequency [MHz] Channel Number	13.000 0	TSL Permittivity	54.5
Group UID	CW 0--	TSL Conductivity [S/m]	0.688
Conversion Factor	17.98	Phantom Section TSL	Flat HSL

Hardware Setup

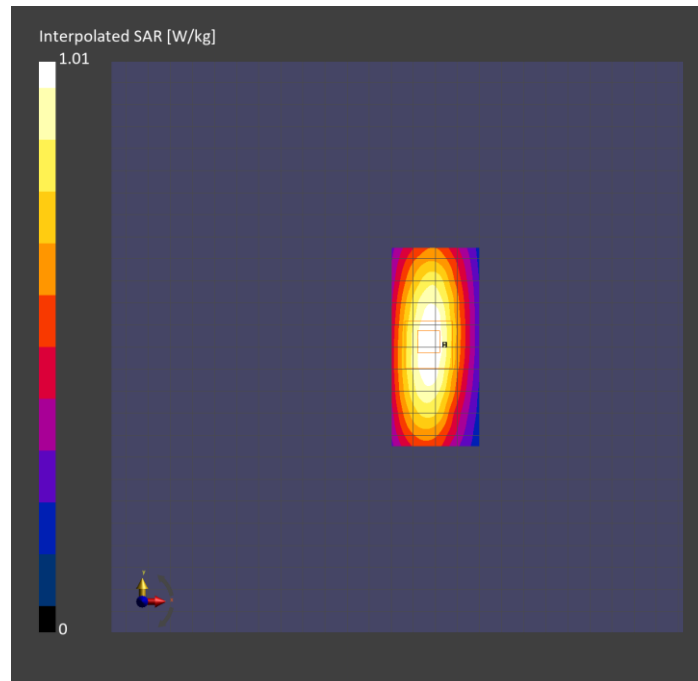
Probe Calibration Date	EX3DV4 - SN3991 2023-10-12	Phantom	ELI V5.0 (20deg probe tilt)
DAE Calibration Date	DAE4 Sn1380 2024-02-09	TSL Type	HBBL-600-10000
Software Version	16.2.4.2524		

Scans Setup

	Area Scan	Zoom Scan
Grid Extents [mm]	40.0 x 90.0	30.0 x 30.0 x 30.0
Grid Steps [mm]	10.0 x 15.0	6.0 x 6.0 x 1.5
Sensor Surface [mm]	3.0	1.4
Graded Grid	N/A	Yes
M2/M1 [%]		76.6
Dist 3dB Peak [mm]		15.6

Measurement Results

	Area Scan	Zoom Scan
psSAR1g [W/Kg]	0.531	0.505
psSAR10g [W/Kg]	0.428	0.311
Power Drift [dB]	N/A	0.01



System Performance Check Report for D3700V2 - SN1110

Exposure Conditions

Frequency [MHz] Channel Number	3700.000 0	TSL Permittivity	39.8
Group UID	CW 0--	TSL Conductivity [S/m]	2.90
Conversion Factor	6.88	Phantom Section TSL	Flat HSL

Hardware Setup

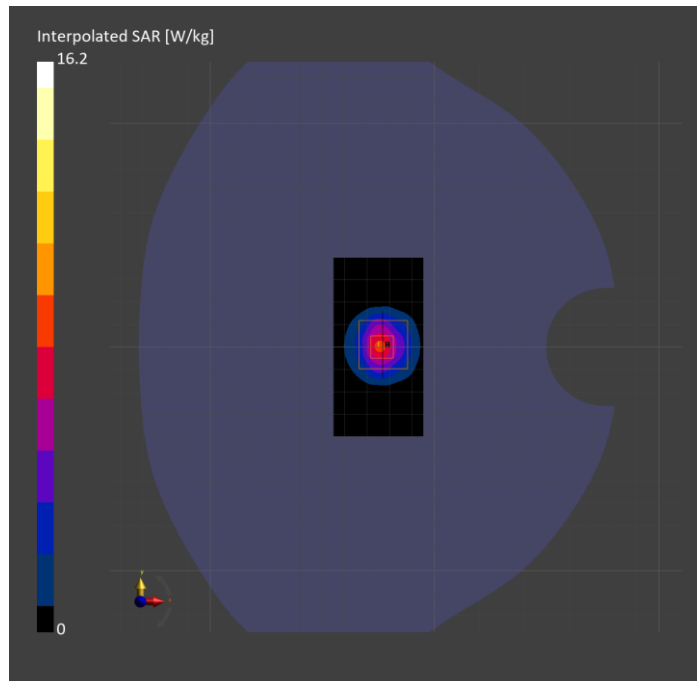
Probe Calibration Date	EX3DV4 - SN7335 2024-01-09	Phantom	Twin-SAM V8.0 (30deg probe tilt)
DAE Calibration Date	DAE4ip Sn1619 2024-04-11	TSL Type	HBBL-600-10000
Software Version	16.2.4.2524		

Scans Setup

	Area Scan	Zoom Scan
Grid Extents [mm]	40.0 x 80.0	28.0 x 28.0 x 28.0
Grid Steps [mm]	10.0 x 10.0	5.0 x 5.0 x 1.4
Sensor Surface [mm]	3.0	1.4
Graded Grid	N/A	Yes
M2/M1 [%]		75.1
Dist 3dB Peak [mm]		8.1

Measurement Results

	Area Scan	Zoom Scan
psSAR1g [W/Kg]	5.95	6.13
psSAR10g [W/Kg]	2.22	2.28
Power Drift [dB]	N/A	-0.01



System Performance Check Report for D3900V2 - SN1102

Exposure Conditions

Frequency [MHz] Channel Number	3900.000 0	TSL Permittivity	39.5
Group UID	CW 0--	TSL Conductivity [S/m]	3.10
Conversion Factor	6.69	Phantom Section TSL	Flat HSL

Hardware Setup

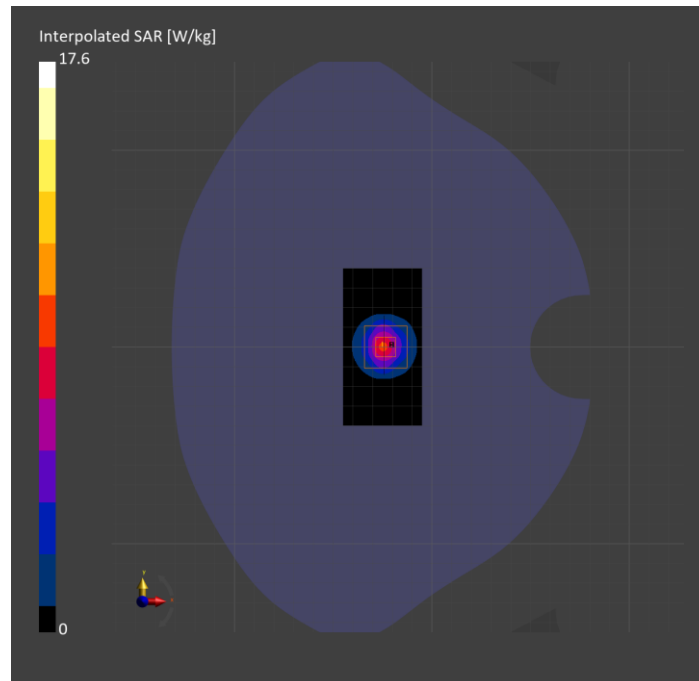
Probe Calibration Date	EX3DV4 - SN7335 2024-01-09	Phantom	Twin-SAM V8.0 (30deg probe tilt)
DAE Calibration Date	DAE4ip Sn1619 2024-04-11	TSL Type	HBBL-600-10000
Software Version	16.2.4.2524		

Scans Setup

	Area Scan	Zoom Scan
Grid Extents [mm]	40.0 x 80.0	28.0 x 28.0 x 28.0
Grid Steps [mm]	10.0 x 10.0	5.0 x 5.0 x 1.4
Sensor Surface [mm]	3.0	1.4
Graded Grid	N/A	Yes
M2/M1 [%]		73.8
Dist 3dB Peak [mm]		8.3

Measurement Results

	Area Scan	Zoom Scan
psSAR1g [W/Kg]	6.22	6.30
psSAR10g [W/Kg]	2.18	2.23
Power Drift [dB]	N/A	-0.01



System Performance Check Report for D2300V2 - SN1058

Exposure Conditions

Frequency [MHz] Channel Number	2300.000 0	TSL Permittivity	41.7
Group UID	CW 0--	TSL Conductivity [S/m]	1.69
Conversion Factor	7.56	Phantom Section TSL	Flat HSL

Hardware Setup

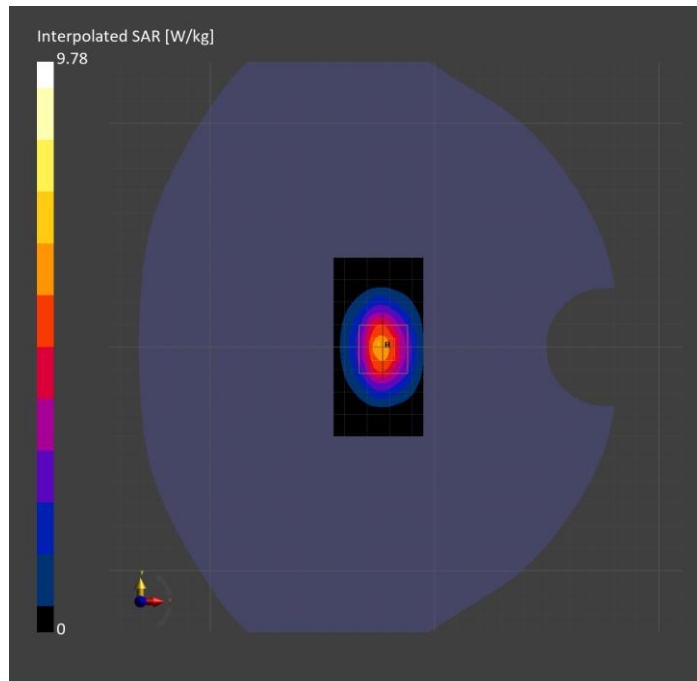
Probe Calibration Date	EX3DV4 - SN7335 2024-01-09	Phantom	Twin-SAM V8.0 (30deg probe tilt)
DAE Calibration Date	DAE4ip Sn1619 2024-04-11	TSL Type	HBBL-600-10000
Software Version	16.2.4.2524		

Scans Setup

	Area Scan	Zoom Scan
Grid Extents [mm]	40.0 x 80.0	30.0 x 30.0 x 30.0
Grid Steps [mm]	10.0 x 10.0	5.0 x 5.0 x 1.5
Sensor Surface [mm]	3.0	1.4
Graded Grid	N/A	Yes
M2/M1 [%]		80.9
Dist 3dB Peak [mm]		9.0

Measurement Results

	Area Scan	Zoom Scan
psSAR1g [W/Kg]	4.90	4.90
psSAR10g [W/Kg]	2.35	2.36
Power Drift [dB]	N/A	0.00



System Performance Check Report for D2600V2 - SN1006

Exposure Conditions

Frequency [MHz] Channel Number	2600.000 0	TSL Permittivity	39.2
Group UID	CW 0--	TSL Conductivity [S/m]	1.91
Conversion Factor	7.4	Phantom Section TSL	Flat HSL

Hardware Setup

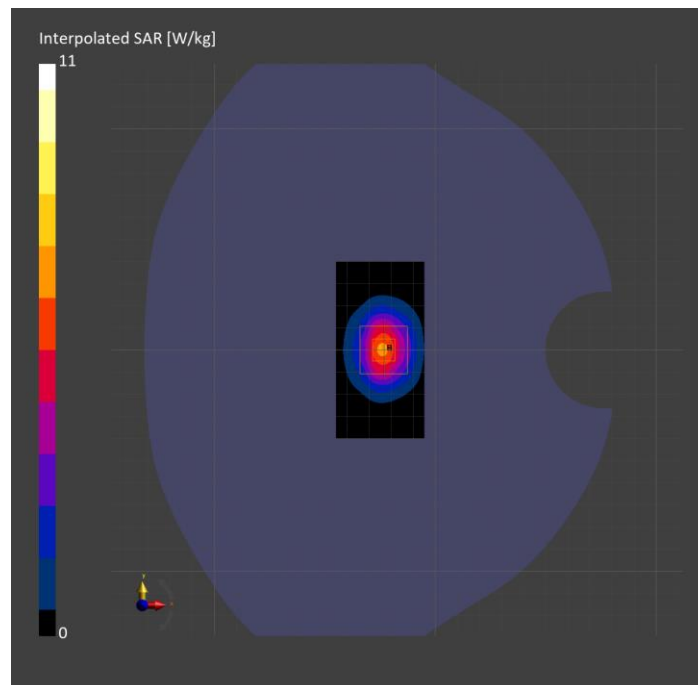
Probe Calibration Date	EX3DV4 - SN7335 2024-01-09	Phantom	Twin-SAM V8.0 (30deg probe tilt)
DAE Calibration Date	DAE4ip Sn1619 2024-04-11	TSL Type	HBBL-600-10000
Software Version	16.2.4.2524		

Scans Setup

	Area Scan	Zoom Scan
Grid Extents [mm]	40.0 x 80.0	30.0 x 30.0 x 30.0
Grid Steps [mm]	10.0 x 10.0	5.0 x 5.0 x 1.5
Sensor Surface [mm]	3.0	1.4
Graded Grid	N/A	Yes
M2/M1 [%]		79.0
Dist 3dB Peak [mm]		9.0

Measurement Results

	Area Scan	Zoom Scan
psSAR1g [W/Kg]	5.06	5.13
psSAR10g [W/Kg]	2.29	2.32
Power Drift [dB]	N/A	0.01



System Performance Check Report for D3500V2 - SN1060

Exposure Conditions

Frequency [MHz] Channel Number	3500.000 0	TSL Permittivity	40.4
Group UID	CW 0--	TSL Conductivity [S/m]	2.72
Conversion Factor	6.8	Phantom Section TSL	Flat HSL

Hardware Setup

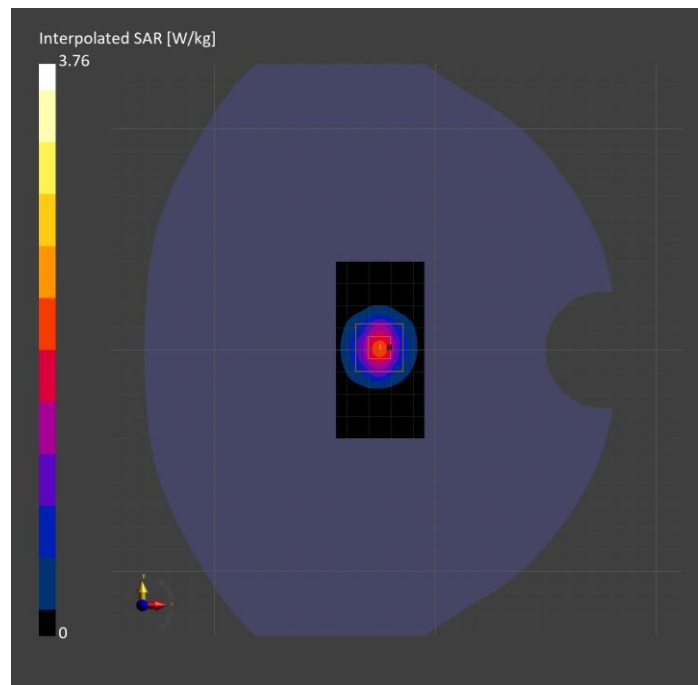
Probe Calibration Date	EX3DV4 - SN7335 2024-01-09	Phantom	Twin-SAM V8.0 (30deg probe tilt)
DAE Calibration Date	DAE4ip Sn1619 2024-04-11	TSL Type	HBBL-600-10000
Software Version	16.2.4.2524		

Scans Setup

	Area Scan	Zoom Scan
Grid Extents [mm]	40.0 x 80.0	28.0 x 28.0 x 28.0
Grid Steps [mm]	10.0 x 10.0	5.0 x 5.0 x 1.4
Sensor Surface [mm]	3.0	1.4
Graded Grid	N/A	Yes
M2/M1 [%]		76.0
Dist 3dB Peak [mm]		8.0

Measurement Results

	Area Scan	Zoom Scan
psSAR1g [W/Kg]	1.48	1.49
psSAR10g [W/Kg]	0.565	0.577
Power Drift [dB]	N/A	-0.01



System Performance Check Report for D5GHzV2 - SN1168

Exposure Conditions

Frequency [MHz] Channel Number	5850.000 0	TSL Permittivity	35.0
Group UID	CW 0--	TSL Conductivity [S/m]	5.24
Conversion Factor	4.63	Phantom Section TSL	Flat HSL

Hardware Setup

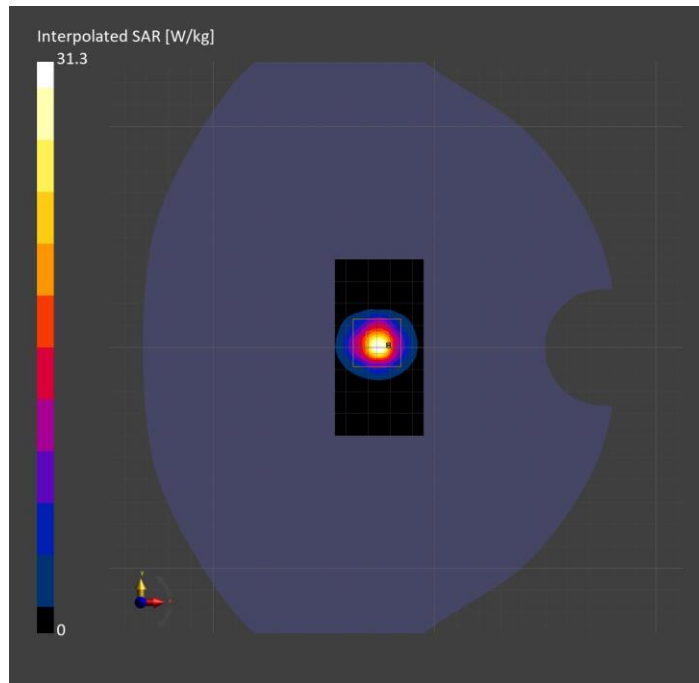
Probe Calibration Date	EX3DV4 - SN3772 2024-02-07	Phantom	Twin-SAM V8.0 (30deg probe tilt)
DAE Calibration Date	DAE4 Sn1258 2024-03-12	TSL Type	HBBL-600-10000
Software Version	16.2.4.2524		

Scans Setup

	Area Scan	Zoom Scan
Grid Extents [mm]	40.0 x 80.0	22.0 x 22.0 x 22.0
Grid Steps [mm]	10.0 x 10.0	4.0 x 4.0 x 1.4
Sensor Surface [mm]	3.0	1.4
Graded Grid	N/A	Yes
M2/M1 [%]		60.8
Dist 3dB Peak [mm]		7.2

Measurement Results

	Area Scan	Zoom Scan
psSAR1g [W/Kg]	6.67	7.31
psSAR10g [W/Kg]	1.88	2.06
Power Drift [dB]	N/A	-0.00



System Performance Check Report for D5GHzV2 - SN1168

Exposure Conditions

Frequency [MHz] Channel Number	5850.000 0	TSL Permittivity	34.4
Group UID	CW 0--	TSL Conductivity [S/m]	5.27
Conversion Factor	4.63	Phantom Section TSL	Flat HSL

Hardware Setup

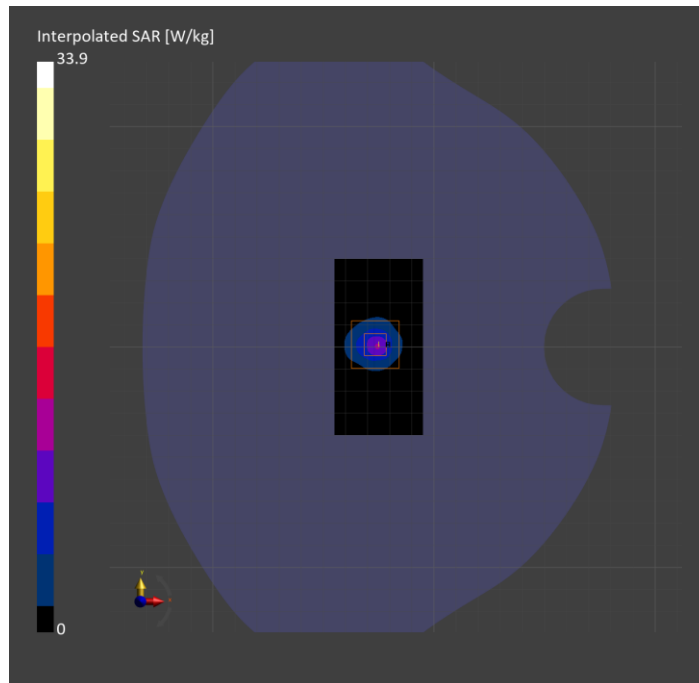
Probe Calibration Date	EX3DV4 - SN3772 2024-02-07	Phantom	Twin-SAM V8.0 (30deg probe tilt)
DAE Calibration Date	DAE4 Sn1258 2024-03-12	TSL Type	HBBL-600-10000
Software Version	16.2.4.2524		

Scans Setup

	Area Scan	Zoom Scan
Grid Extents [mm]	40.0 x 80.0	22.0 x 22.0 x 22.0
Grid Steps [mm]	10.0 x 10.0	4.0 x 4.0 x 1.4
Sensor Surface [mm]	3.0	1.4
Graded Grid	N/A	Yes
M2/M1 [%]		62.0
Dist 3dB Peak [mm]		7.2

Measurement Results

	Area Scan	Zoom Scan
psSAR1g [W/Kg]	7.38	8.17
psSAR10g [W/Kg]	2.13	2.33
Power Drift [dB]	N/A	0.01



System Performance Check Report for D2450V2 - SN706

Exposure Conditions

Frequency [MHz] Channel Number	2450.000 0	TSL Permittivity	40.9
Group UID	CW 0--	TSL Conductivity [S/m]	1.76
Conversion Factor	7.18	Phantom Section TSL	Flat HSL

Hardware Setup

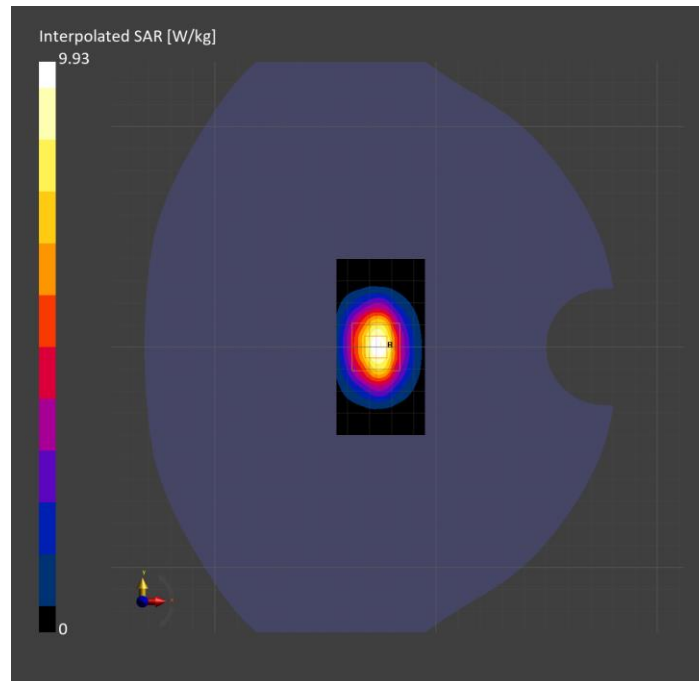
Probe Calibration Date	EX3DV4 - SN3772 2024-02-07	Phantom	Twin-SAM V8.0 (30deg probe tilt)
DAE Calibration Date	DAE4 Sn1258 2024-03-12	TSL Type	HBBL-600-10000
Software Version	16.2.4.2524		

Scans Setup

	Area Scan	Zoom Scan
Grid Extents [mm]	40.0 x 80.0	30.0 x 30.0 x 30.0
Grid Steps [mm]	10.0 x 10.0	5.0 x 5.0 x 1.5
Sensor Surface [mm]	3.0	1.4
Graded Grid	N/A	Yes
M2/M1 [%]		80.0
Dist 3dB Peak [mm]		9.0

Measurement Results

	Area Scan	Zoom Scan
psSAR1g [W/Kg]	4.81	4.90
psSAR10g [W/Kg]	2.24	2.33
Power Drift [dB]	N/A	-0.02



System Performance Check Report for D5GHzV2 - SN1168

Exposure Conditions

Frequency [MHz] Channel Number	5250.000 0	TSL Permittivity	36.0
Group UID	CW 0--	TSL Conductivity [S/m]	4.52
Conversion Factor	5.19	Phantom Section TSL	Flat HSL

Hardware Setup

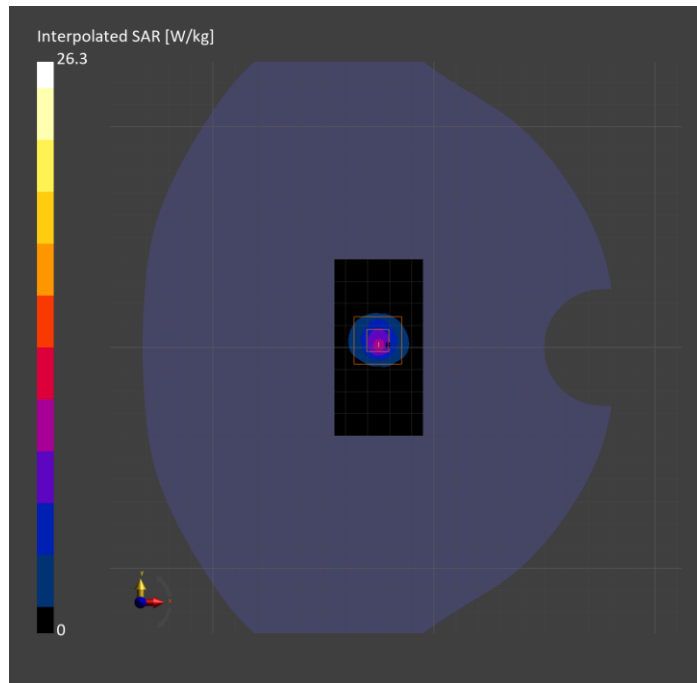
Probe Calibration Date	EX3DV4 - SN3772 2024-02-07	Phantom	Twin-SAM V8.0 (30deg probe tilt)
DAE Calibration Date	DAE4 Sn1258 2024-03-12	TSL Type	HBBL-600-10000
Software Version	16.2.4.2524		

Scans Setup

	Area Scan	Zoom Scan
Grid Extents [mm]	40.0 x 80.0	22.0 x 22.0 x 22.0
Grid Steps [mm]	10.0 x 10.0	4.0 x 4.0 x 1.4
Sensor Surface [mm]	3.0	1.4
Graded Grid	N/A	Yes
M2/M1 [%]		65.2
Dist 3dB Peak [mm]		7.3

Measurement Results

	Area Scan	Zoom Scan
psSAR1g [W/Kg]	6.27	6.96
psSAR10g [W/Kg]	1.87	2.03
Power Drift [dB]	N/A	0.09



System Performance Check Report for D5GHzV2 - SN1168

Exposure Conditions

Frequency [MHz] Channel Number	5750.000 0	TSL Permittivity	36.1
Group UID	CW 0--	TSL Conductivity [S/m]	5.18
Conversion Factor	4.63	Phantom Section TSL	Flat HSL

Hardware Setup

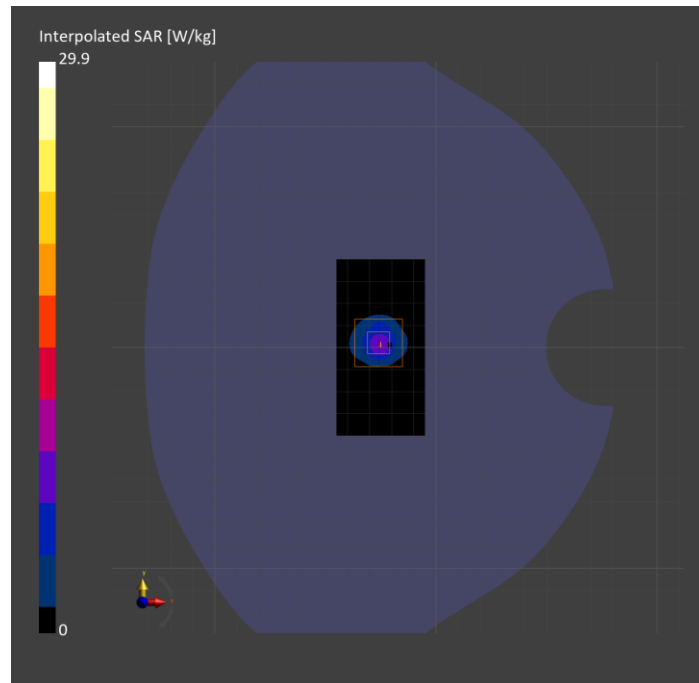
Probe Calibration Date	EX3DV4 - SN3772 2024-02-07	Phantom	Twin-SAM V8.0 (30deg probe tilt)
DAE Calibration Date	DAE4 Sn1258 2024-03-12	TSL Type	HBBL-600-10000
Software Version	16.2.4.2524		

Scans Setup

	Area Scan	Zoom Scan
Grid Extents [mm]	40.0 x 80.0	22.0 x 22.0 x 22.0
Grid Steps [mm]	10.0 x 10.0	4.0 x 4.0 x 1.4
Sensor Surface [mm]	3.0	1.4
Graded Grid	N/A	Yes
M2/M1 [%]		61.9
Dist 3dB Peak [mm]		7.2

Measurement Results

	Area Scan	Zoom Scan
psSAR1g [W/Kg]	6.52	7.23
psSAR10g [W/Kg]	1.89	2.07
Power Drift [dB]	N/A	-0.08



System Performance Check Report for D5GHzV2 - SN1138

Exposure Conditions

Frequency [MHz] Channel Number	5250.000 0	TSL Permittivity	34.8
Group UID	CW 0--	TSL Conductivity [S/m]	4.46
Conversion Factor	5.4	Phantom Section TSL	Flat HSL

Hardware Setup

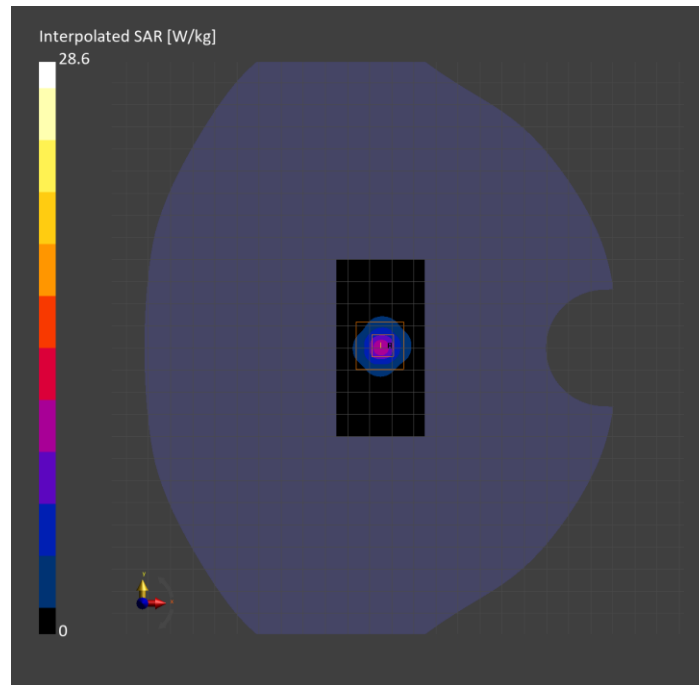
Probe Calibration Date	EX3DV4 - SN7498 2024-03-12	Phantom	Twin-SAM V8.0 (30deg probe tilt)
DAE Calibration Date	DAE4 Sn1796 2024-05-02	TSL Type	HBBL-600-10000
Software Version	16.2.4.2524		

Scans Setup

	Area Scan	Zoom Scan
Grid Extents [mm]	40.0 x 80.0	22.0 x 22.0 x 22.0
Grid Steps [mm]	10.0 x 10.0	4.0 x 4.0 x 1.4
Sensor Surface [mm]	3.0	1.4
Graded Grid	N/A	Yes
M2/M1 [%]		66.0
Dist 3dB Peak [mm]		7.2

Measurement Results

	Area Scan	Zoom Scan
psSAR1g [W/Kg]	7.41	7.54
psSAR10g [W/Kg]	2.06	2.16
Power Drift [dB]	0.01	0.02



System Performance Check Report for D2450V2 - SN748

Exposure Conditions

Frequency [MHz] Channel Number	2450.000 0	TSL Permittivity	40.8
Group UID	CW 0--	TSL Conductivity [S/m]	1.77
Conversion Factor	6.96	Phantom Section TSL	Flat HSL

Hardware Setup

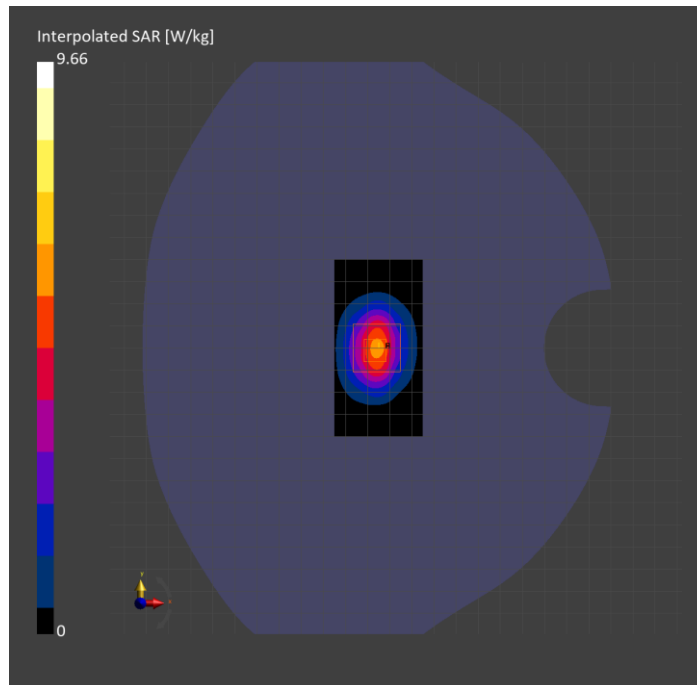
Probe Calibration Date	EX3DV4 - SN7820 2024-05-10	Phantom	Twin-SAM V8.0 (30deg probe tilt)
DAE Calibration Date	DAE4 Sn1544 2024-01-16	TSL Type	HBBL-600-10000
Software Version	16.2.4.2524		

Scans Setup

	Area Scan	Zoom Scan
Grid Extents [mm]	40.0 x 80.0	30.0 x 30.0 x 30.0
Grid Steps [mm]	10.0 x 10.0	5.0 x 5.0 x 1.5
Sensor Surface [mm]	3.0	1.4
Graded Grid	N/A	Yes
M2/M1 [%]		79.1
Dist 3dB Peak [mm]		9.0

Measurement Results

	Area Scan	Zoom Scan
psSAR1g [W/Kg]	4.63	4.70
psSAR10g [W/Kg]	2.15	2.21
Power Drift [dB]	N/A	-0.01



System Performance Check Report for D5GHzV2 - SN1138

Exposure Conditions

Frequency [MHz] Channel Number	5850.000 0	TSL Permittivity	33.6
Group UID	CW 0--	TSL Conductivity [S/m]	5.15
Conversion Factor	4.51	Phantom Section TSL	Flat HSL

Hardware Setup

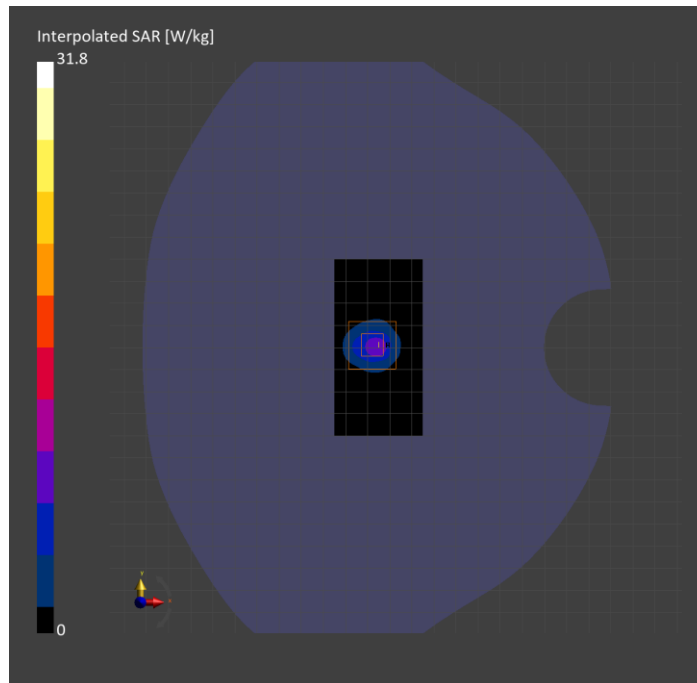
Probe Calibration Date	EX3DV4 - SN7820 2024-05-10	Phantom	Twin-SAM V8.0 (30deg probe tilt)
DAE Calibration Date	DAE4 Sn1544 2024-01-16	TSL Type	HBBL-600-10000
Software Version	16.2.4.2524		

Scans Setup

	Area Scan	Zoom Scan
Grid Extents [mm]	40.0 x 80.0	22.0 x 22.0 x 22.0
Grid Steps [mm]	10.0 x 10.0	4.0 x 4.0 x 1.4
Sensor Surface [mm]	3.0	1.4
Graded Grid	N/A	Yes
M2/M1 [%]		59.6
Dist 3dB Peak [mm]		7.4

Measurement Results

	Area Scan	Zoom Scan
psSAR1g [W/Kg]	6.82	7.66
psSAR10g [W/Kg]	2.01	2.20
Power Drift [dB]	N/A	-0.02



System Performance Check Report for D5GHzV2 - SN1168

Exposure Conditions

Frequency [MHz] Channel Number	5850.000 0	TSL Permittivity	35.4
Group UID	CW 0--	TSL Conductivity [S/m]	5.11
Conversion Factor	4.51	Phantom Section TSL	Flat HSL

Hardware Setup

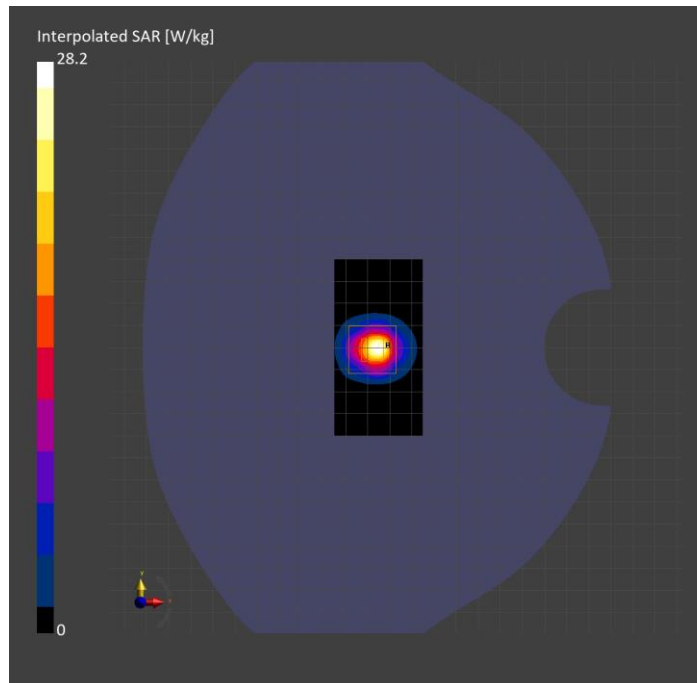
Probe Calibration Date	EX3DV4 - SN7820 2024-05-10	Phantom	Twin-SAM V8.0 (30deg probe tilt)
DAE Calibration Date	DAE4 Sn1544 2024-01-16	TSL Type	HBBL-600-10000
Software Version	16.2.4.2524		

Scans Setup

	Area Scan	Zoom Scan
Grid Extents [mm]	40.0 x 80.0	22.0 x 22.0 x 22.0
Grid Steps [mm]	10.0 x 10.0	4.0 x 4.0 x 1.4
Sensor Surface [mm]	3.0	1.4
Graded Grid	N/A	Yes
M2/M1 [%]		61.6
Dist 3dB Peak [mm]		7.2

Measurement Results

	Area Scan	Zoom Scan
psSAR1g [W/Kg]	6.55	7.33
psSAR10g [W/Kg]	1.92	2.08
Power Drift [dB]	N/A	0.03



System Performance Check Report for D2450V2 - SN706

Exposure Conditions

Frequency [MHz] Channel Number	2450.000 0	TSL Permittivity	41.2
Group UID	CW 0--	TSL Conductivity [S/m]	1.71
Conversion Factor	6.96	Phantom Section TSL	Flat HSL

Hardware Setup

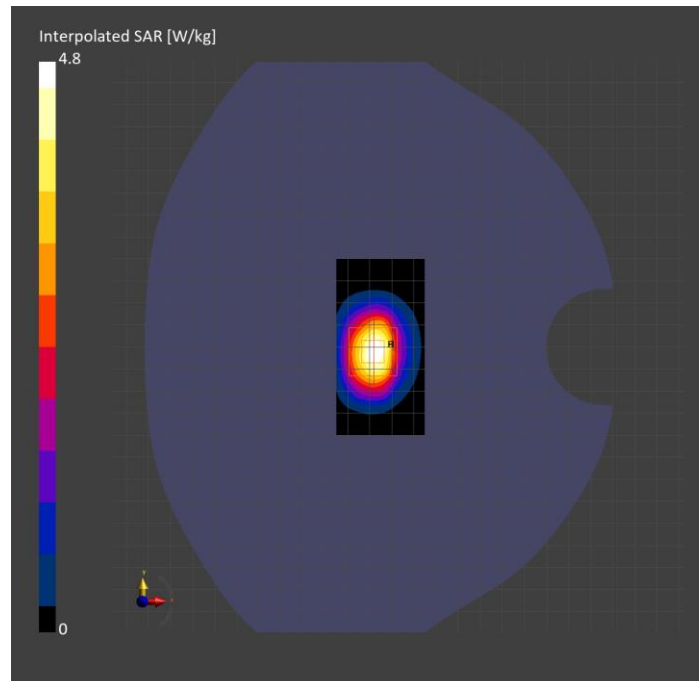
Probe Calibration Date	EX3DV4 - SN7820 2024-05-10	Phantom	Twin-SAM V8.0 (30deg probe tilt)
DAE Calibration Date	DAE4 Sn1544 2024-01-16	TSL Type	HBBL4-250V3
Software Version	16.2.4.2524		

Scans Setup

	Area Scan	Zoom Scan
Grid Extents [mm]	40.0 x 80.0	30.0 x 30.0 x 30.0
Grid Steps [mm]	10.0 x 10.0	5.0 x 5.0 x 1.5
Sensor Surface [mm]	3.0	1.4
Graded Grid	N/A	Yes
M2/M1 [%]		79.0
Dist 3dB Peak [mm]		9.0

Measurement Results

	Area Scan	Zoom Scan
psSAR1g [W/Kg]	2.26	2.37
psSAR10g [W/Kg]	1.08	1.12
Power Drift [dB]	N/A	-0.02



System Performance Check Report for D5GHzV2 - SN1003

Exposure Conditions

Frequency [MHz] Channel Number	5750.000 0	TSL Permittivity	35.9
Group UID	CW 0--	TSL Conductivity [S/m]	5.04
Conversion Factor	4.51	Phantom Section TSL	Flat HSL

Hardware Setup

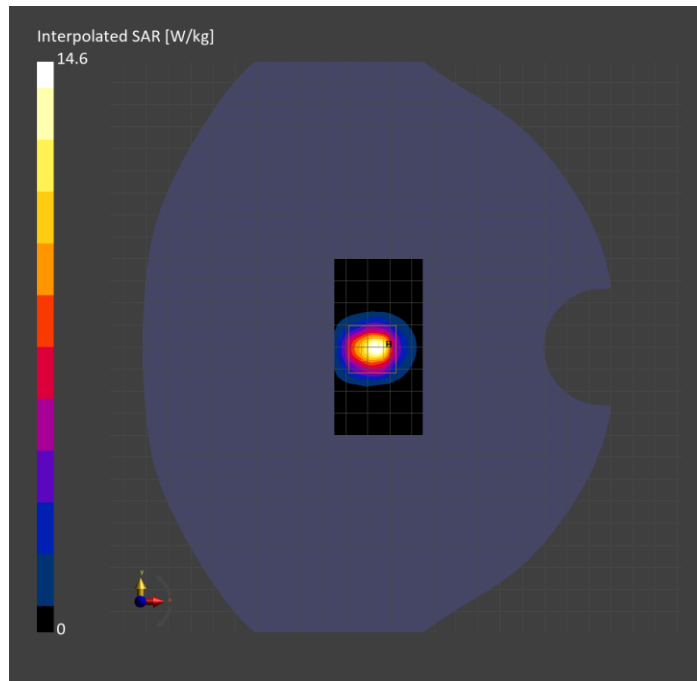
Probe Calibration Date	EX3DV4 - SN7820 2024-05-10	Phantom	Twin-SAM V8.0 (30deg probe tilt)
DAE Calibration Date	DAE4 Sn1544 2024-01-16	TSL Type	HBBL4-250V3
Software Version	16.2.4.2524		

Scans Setup

	Area Scan	Zoom Scan
Grid Extents [mm]	40.0 x 80.0	22.0 x 22.0 x 22.0
Grid Steps [mm]	10.0 x 10.0	4.0 x 4.0 x 1.4
Sensor Surface [mm]	3.0	1.4
Graded Grid	N/A	Yes
M2/M1 [%]		61.6
Dist 3dB Peak [mm]		7.4

Measurement Results

	Area Scan	Zoom Scan
psSAR1g [W/Kg]	3.11	3.58
psSAR10g [W/Kg]	0.938	1.03
Power Drift [dB]	N/A	0.03



System Performance Check Report for D2450V2 - SN706

Exposure Conditions

Frequency [MHz] Channel Number	2450.000 0	TSL Permittivity	40.3
Group UID	CW 0--	TSL Conductivity [S/m]	1.77
Conversion Factor	6.96	Phantom Section TSL	Flat HSL

Hardware Setup

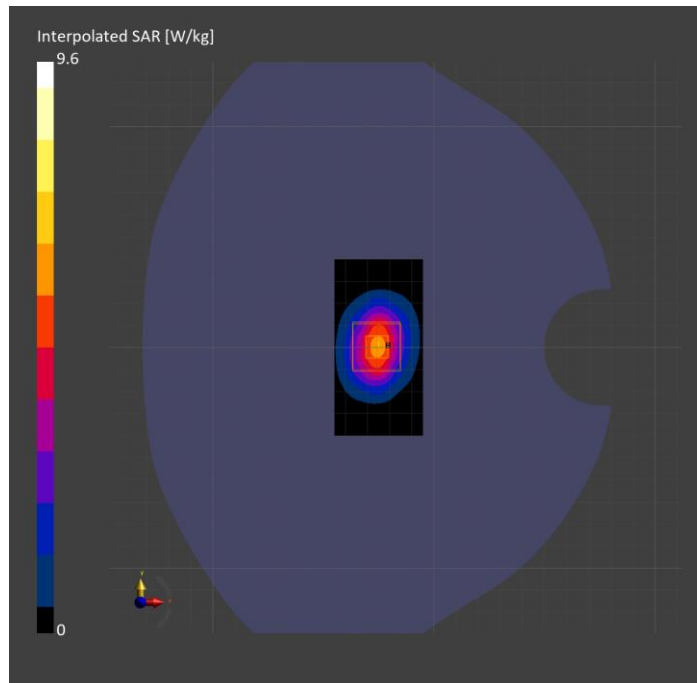
Probe Calibration Date	EX3DV4 - SN7779 2024-05-10	Phantom	Twin-SAM V8.0 (30deg probe tilt)
DAE Calibration Date	DAE4 Sn1439 2024-04-24	TSL Type	HBBL-600-10000
Software Version	16.2.4.2524		

Scans Setup

	Area Scan	Zoom Scan
Grid Extents [mm]	40.0 x 80.0	30.0 x 30.0 x 30.0
Grid Steps [mm]	10.0 x 10.0	5.0 x 5.0 x 1.5
Sensor Surface [mm]	3.0	1.4
Graded Grid	N/A	Yes
M2/M1 [%]		80.1
Dist 3dB Peak [mm]		9.0

Measurement Results

	Area Scan	Zoom Scan
psSAR1g [W/Kg]	4.69	4.74
psSAR10g [W/Kg]	2.19	2.25
Power Drift [dB]	N/A	0.00



System Performance Check Report for D5GHzV2 - SN1003

Exposure Conditions

Frequency [MHz] Channel Number	5250.000 0	TSL Permittivity	35.7
Group UID	CW 0--	TSL Conductivity [S/m]	4.51
Conversion Factor	5.17	Phantom Section TSL	Flat HSL

Hardware Setup

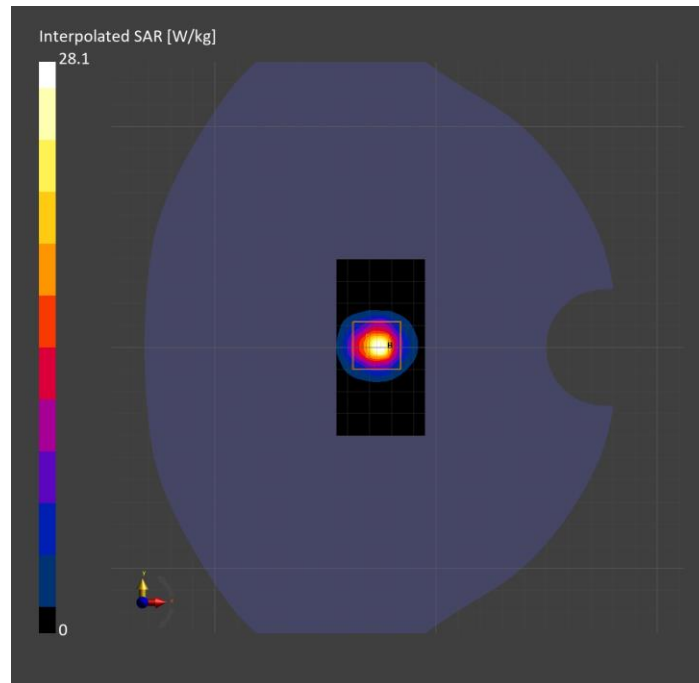
Probe Calibration Date	EX3DV4 - SN7779 2024-05-10	Phantom	Twin-SAM V8.0 (30deg probe tilt)
DAE Calibration Date	DAE4 Sn1439 2024-04-24	TSL Type	HBBL-600-10000
Software Version	16.2.4.2524		

Scans Setup

	Area Scan	Zoom Scan
Grid Extents [mm]	40.0 x 80.0	22.0 x 22.0 x 22.0
Grid Steps [mm]	10.0 x 10.0	4.0 x 4.0 x 1.4
Sensor Surface [mm]	3.0	1.4
Graded Grid	N/A	Yes
M2/M1 [%]		64.8
Dist 3dB Peak [mm]		7.3

Measurement Results

	Area Scan	Zoom Scan
psSAR1g [W/Kg]	6.71	7.33
psSAR10g [W/Kg]	1.95	2.10
Power Drift [dB]	N/A	0.00



System Performance Check Report for D2450V2 - SN706

Exposure Conditions

Frequency [MHz] Channel Number	2450.000 0	TSL Permittivity	39.9
Group UID	CW 0--	TSL Conductivity [S/m]	1.78
Conversion Factor	7.49	Phantom Section TSL	Flat HSL

Hardware Setup

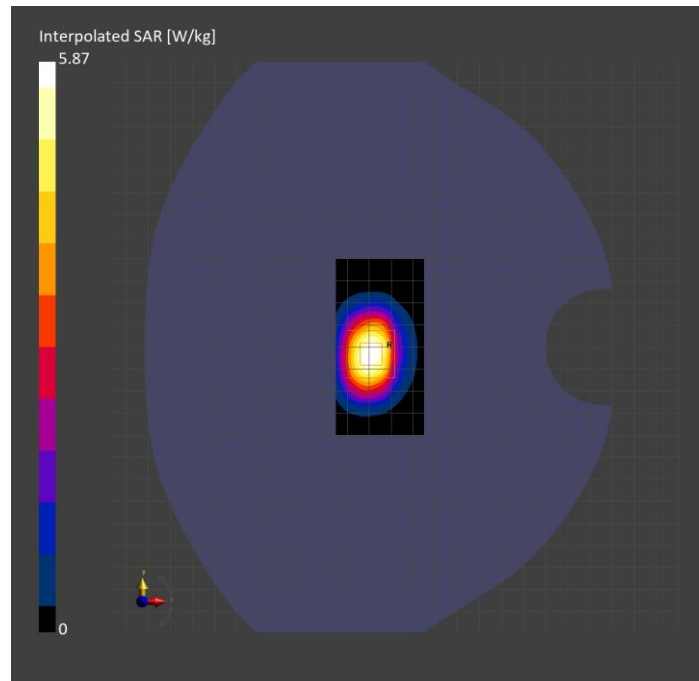
Probe Calibration Date	EX3DV4 - SN7587 2024-04-15	Phantom	Twin-SAM V8.0 (30deg probe tilt)
DAE Calibration Date	DAE4 Sn1797 2024-05-02	TSL Type	HBBL-600-10000
Software Version	16.2.4.2524		

Scans Setup

	Area Scan	Zoom Scan
Grid Extents [mm]	40.0 x 80.0	30.0 x 30.0 x 30.0
Grid Steps [mm]	10.0 x 10.0	5.0 x 5.0 x 1.5
Sensor Surface [mm]	3.0	1.4
Graded Grid	N/A	Yes
M2/M1 [%]		80.4
Dist 3dB Peak [mm]		9.0

Measurement Results

	Area Scan	Zoom Scan
psSAR1g [W/Kg]	4.63	4.82
psSAR10g [W/Kg]	2.26	2.26
Power Drift [dB]	N/A	0.00



System Performance Check Report for D5GHzV2 - SN1168

Exposure Conditions

Frequency [MHz] Channel Number	5600.000 0	TSL Permittivity	35.0
Group UID	CW 0--	TSL Conductivity [S/m]	4.75
Conversion Factor	4.96	Phantom Section TSL	Flat HSL

Hardware Setup

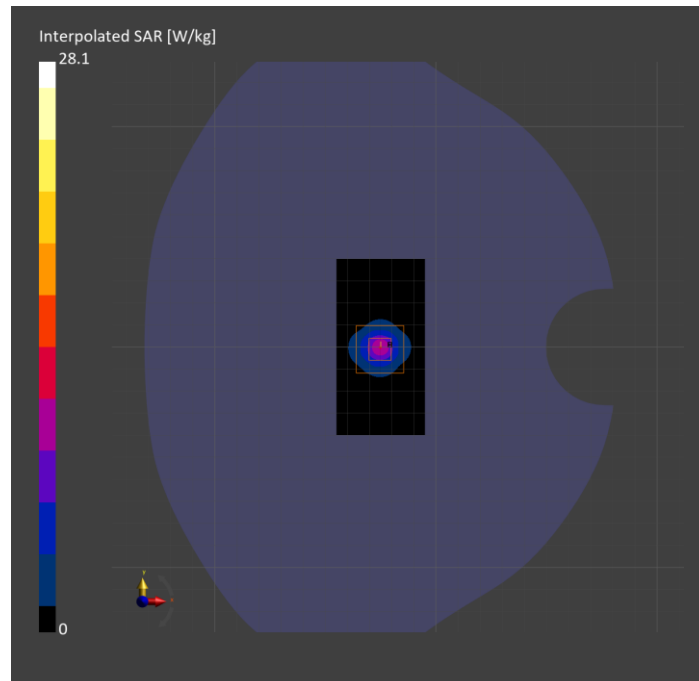
Probe Calibration Date	EX3DV4 - SN7501 2024-03-14	Phantom	Twin-SAM V8.0 (30deg probe tilt)
DAE Calibration Date	DAE4 Sn1357 2024-01-09	TSL Type	HBBL-600-10000
Software Version	16.2.4.2524		

Scans Setup

	Area Scan	Zoom Scan
Grid Extents [mm]	40.0 x 80.0	22.0 x 22.0 x 22.0
Grid Steps [mm]	10.0 x 10.0	4.0 x 4.0 x 1.4
Sensor Surface [mm]	3.0	1.4
Graded Grid	N/A	Yes
M2/M1 [%]		65.8
Dist 3dB Peak [mm]		7.4

Measurement Results

	Area Scan	Zoom Scan
psSAR1g [W/Kg]	7.29	7.41
psSAR10g [W/Kg]	2.04	2.15
Power Drift [dB]	N/A	0.03



System Performance Check Report for D5GHzV2 - SN1168

Exposure Conditions

Frequency [MHz] Channel Number	5850.000 0	TSL Permittivity	34.4
Group UID	CW 0--	TSL Conductivity [S/m]	5.11
Conversion Factor	5.23	Phantom Section TSL	Flat HSL

Hardware Setup

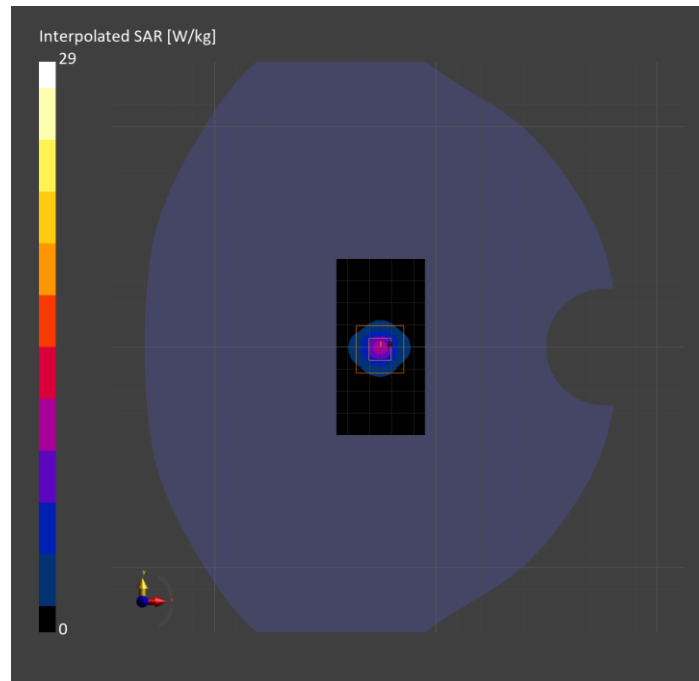
Probe Calibration Date	EX3DV4 - SN7501 2024-03-14	Phantom	Twin-SAM V8.0 (30deg probe tilt)
DAE Calibration Date	DAE4 Sn1357 2024-01-09	TSL Type	HBBL-600-10000
Software Version	16.2.4.2524		

Scans Setup

	Area Scan	Zoom Scan
Grid Extents [mm]	40.0 x 80.0	22.0 x 22.0 x 22.0
Grid Steps [mm]	10.0 x 10.0	4.0 x 4.0 x 1.4
Sensor Surface [mm]	3.0	1.4
Graded Grid	N/A	Yes
M2/M1 [%]		64.2
Dist 3dB Peak [mm]		7.6

Measurement Results

	Area Scan	Zoom Scan
psSAR1g [W/Kg]	7.20	7.34
psSAR10g [W/Kg]	2.02	2.12
Power Drift [dB]	N/A	0.02



System Performance Check Report for D5GHzV2 - SN1003

Exposure Conditions

Frequency [MHz] Channel Number	5750.000 0	TSL Permittivity	34.6
Group UID	CW 0--	TSL Conductivity [S/m]	5.10
Conversion Factor	5.23	Phantom Section TSL	Flat HSL

Hardware Setup

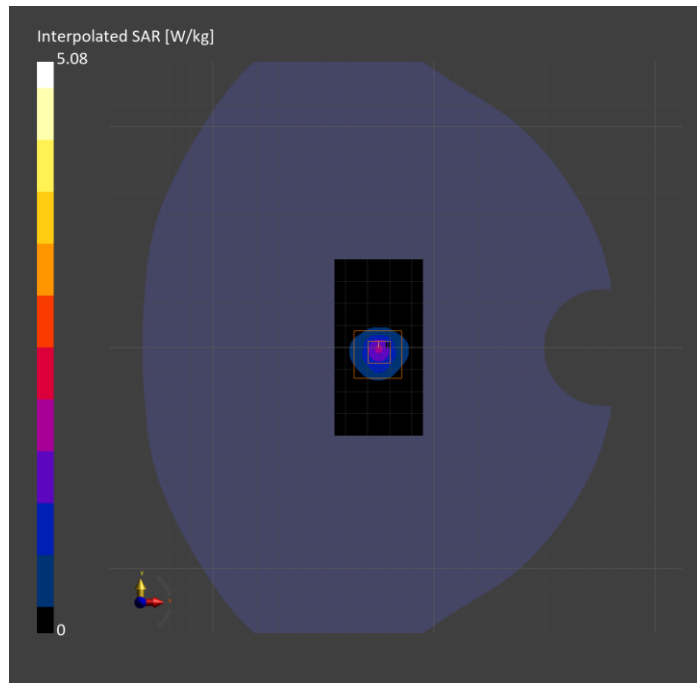
Probe Calibration Date	EX3DV4 - SN7501 2024-03-14	Phantom	Twin-SAM V8.0 (30deg probe tilt)
DAE Calibration Date	DAE4 Sn1357 2024-01-09	TSL Type	HBBL-600-10000
Software Version	16.2.4.2524		

Scans Setup

	Area Scan	Zoom Scan
Grid Extents [mm]	40.0 x 80.0	22.0 x 22.0 x 22.0
Grid Steps [mm]	10.0 x 10.0	4.0 x 4.0 x 1.4
Sensor Surface [mm]	3.0	1.4
Graded Grid	N/A	Yes
M2/M1 [%]		64.5
Dist 3dB Peak [mm]		7.6

Measurement Results

	Area Scan	Zoom Scan
psSAR1g [W/Kg]	1.14	1.32
psSAR10g [W/Kg]	0.330	0.384
Power Drift [dB]	N/A	0.11



System Performance Check Report for D5GHzV2 - SN1003

Exposure Conditions

Frequency [MHz] Channel Number	5600.000 0	TSL Permittivity	35.0
Group UID	CW 0--	TSL Conductivity [S/m]	4.87
Conversion Factor	4.96	Phantom Section TSL	Flat HSL

Hardware Setup

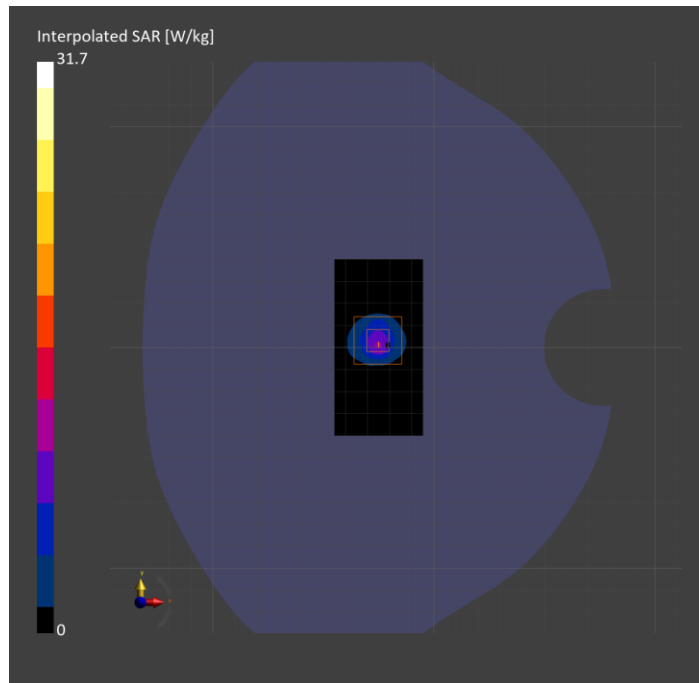
Probe Calibration Date	EX3DV4 - SN7501 2024-03-14	Phantom	Twin-SAM V8.0 (30deg probe tilt)
DAE Calibration Date	DAE4 Sn1357 2024-01-09	TSL Type	HBBL-600-10000
Software Version	16.2.4.2524		

Scans Setup

	Area Scan	Zoom Scan
Grid Extents [mm]	40.0 x 80.0	22.0 x 22.0 x 22.0
Grid Steps [mm]	10.0 x 10.0	4.0 x 4.0 x 1.4
Sensor Surface [mm]	3.0	1.4
Graded Grid	N/A	Yes
M2/M1 [%]		63.2
Dist 3dB Peak [mm]		7.2

Measurement Results

	Area Scan	Zoom Scan
psSAR1g [W/Kg]	7.19	7.93
psSAR10g [W/Kg]	2.11	2.29
Power Drift [dB]	N/A	-0.04



System Performance Check Report for D5GHzV2 - SN1168

Exposure Conditions

Frequency [MHz] Channel Number	5750.000 0	TSL Permittivity	33.9
Group UID	CW 0--	TSL Conductivity [S/m]	5.01
Conversion Factor	5.23	Phantom Section TSL	Flat HSL

Hardware Setup

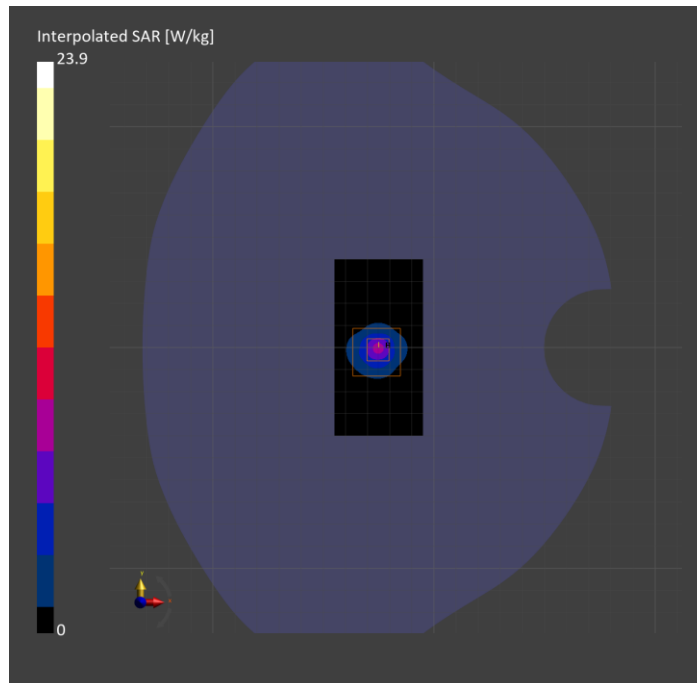
Probe Calibration Date	EX3DV4 - SN7501 2024-03-14	Phantom	Twin-SAM V8.0 (30deg probe tilt)
DAE Calibration Date	DAE4 Sn1357 2024-01-09	TSL Type	HBBL-600-10000
Software Version	16.2.4.2524		

Scans Setup

	Area Scan	Zoom Scan
Grid Extents [mm]	40.0 x 80.0	22.0 x 22.0 x 22.0
Grid Steps [mm]	10.0 x 10.0	4.0 x 4.0 x 1.4
Sensor Surface [mm]	3.0	1.4
Graded Grid	N/A	Yes
M2/M1 [%]		62.5
Dist 3dB Peak [mm]		7.2

Measurement Results

	Area Scan	Zoom Scan
psSAR1g [W/Kg]	5.49	5.93
psSAR10g [W/Kg]	1.58	1.73
Power Drift [dB]	N/A	0.06



System Performance Check Report for D5GHzV2 - SN1003

Exposure Conditions

Frequency [MHz] Channel Number	5250.000 0	TSL Permittivity	35.8
Group UID	CW 0--	TSL Conductivity [S/m]	4.89
Conversion Factor	5.75	Phantom Section TSL	Flat HSL

Hardware Setup

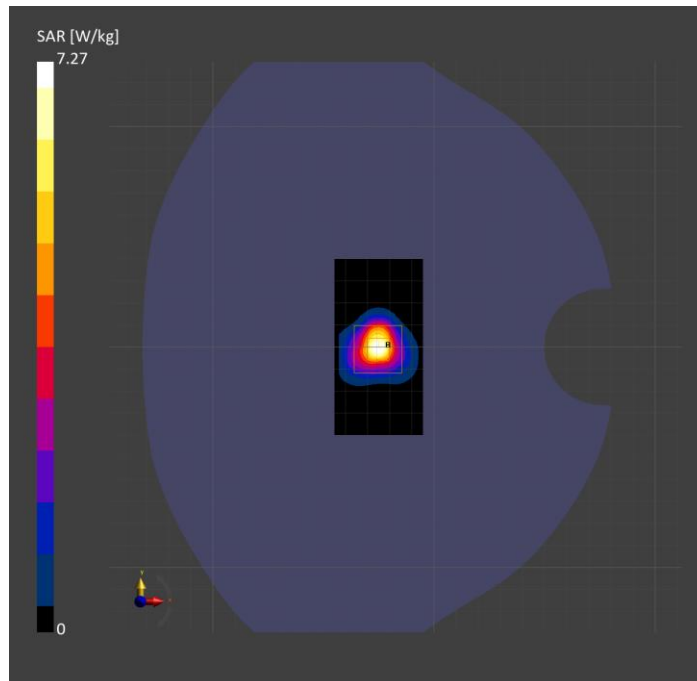
Probe Calibration Date	EX3DV4 - SN7810 2024-05-08	Phantom	Twin-SAM V8.0 (30deg probe tilt)
DAE Calibration Date	DAE4 Sn1787 2024-05-02	TSL Type	HBBL-600-10000
Software Version	16.2.4.2524		

Scans Setup

	Area Scan	Zoom Scan
Grid Extents [mm]	40.0 x 80.0	22.0 x 22.0 x 22.0
Grid Steps [mm]	10.0 x 10.0	4.0 x 4.0 x 1.4
Sensor Surface [mm]	3.0	1.4
Graded Grid	N/A	Yes
M2/M1 [%]		62.2
Dist 3dB Peak [mm]		7.2

Measurement Results

	Area Scan	Zoom Scan
psSAR1g [W/Kg]	6.61	7.26
psSAR10g [W/Kg]	1.89	2.09
Power Drift [dB]	N/A	0.12



System Performance Check Report for D5GHzV2 - SN1168

Exposure Conditions

Frequency [MHz] Channel Number	5600.000 0	TSL Permittivity	37.3
Group UID	CW 0--	TSL Conductivity [S/m]	5.06
Conversion Factor	4.93	Phantom Section TSL	Flat HSL

Hardware Setup

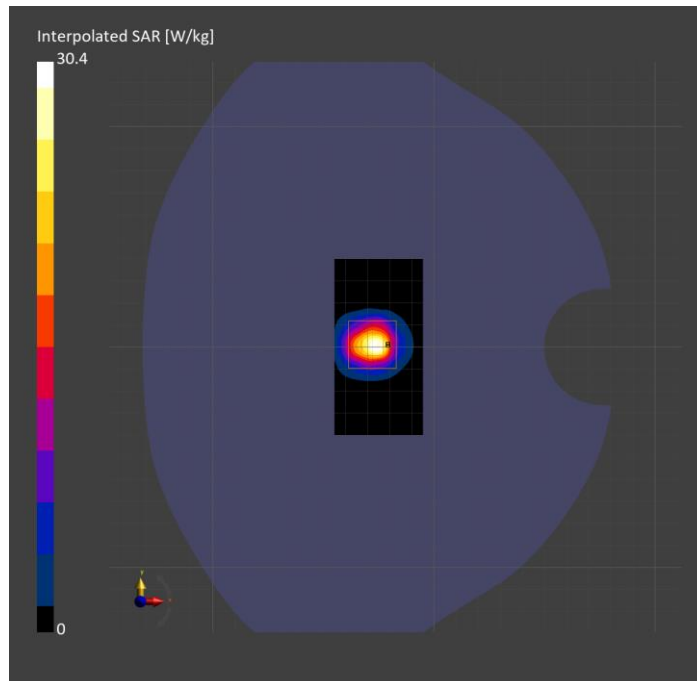
Probe Calibration Date	EX3DV4 - SN3902 2024-03-12	Phantom	Twin-SAM V5.0 (30deg probe tilt)
DAE Calibration Date	DAE4 Sn1799 2023-04-04	TSL Type	HBBL-600-10000
Software Version	16.2.4.2524		

Scans Setup

	Area Scan	Zoom Scan
Grid Extents [mm]	40.0 x 80.0	22.0 x 22.0 x 22.0
Grid Steps [mm]	10.0 x 10.0	4.0 x 4.0 x 1.4
Sensor Surface [mm]	3.0	1.4
Graded Grid	N/A	Yes
M2/M1 [%]		62.7
Dist 3dB Peak [mm]		7.2

Measurement Results

	Area Scan	Zoom Scan
psSAR1g [W/Kg]	6.73	7.56
psSAR10g [W/Kg]	2.02	2.16
Power Drift [dB]	N/A	-0.05



System Performance Check Report for D5GHzV2 - SN1168

Exposure Conditions

Frequency [MHz] Channel Number	5850.000 0	TSL Permittivity	35.0
Group UID	CW 0--	TSL Conductivity [S/m]	5.25
Conversion Factor	5.2	Phantom Section TSL	Flat HSL

Hardware Setup

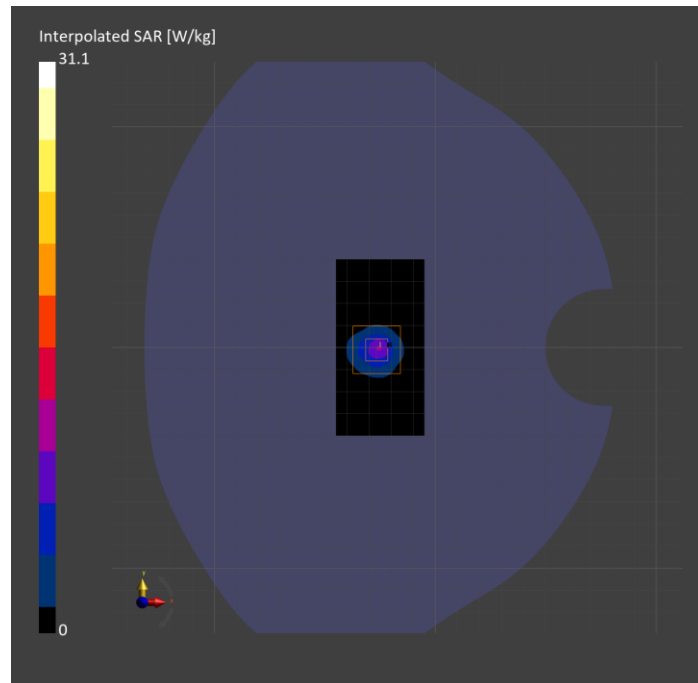
Probe Calibration Date	EX3DV4 - SN3902 2024-03-12	Phantom	Twin-SAM V5.0 (30deg probe tilt)
DAE Calibration Date	DAE4 Sn1799 2023-04-04	TSL Type	HBBL-600-10000
Software Version	16.2.4.2524		

Scans Setup

	Area Scan	Zoom Scan
Grid Extents [mm]	40.0 x 80.0	22.0 x 22.0 x 22.0
Grid Steps [mm]	10.0 x 10.0	4.0 x 4.0 x 1.4
Sensor Surface [mm]	3.0	1.4
Graded Grid	N/A	Yes
M2/M1 [%]		60.9
Dist 3dB Peak [mm]		7.6

Measurement Results

	Area Scan	Zoom Scan
psSAR1g [W/Kg]	6.77	7.35
psSAR10g [W/Kg]	1.95	2.09
Power Drift [dB]	N/A	0.09



System Performance Check Report for D5GHzV2 - SN1003

Exposure Conditions

Frequency [MHz] Channel Number	5750.000 0	TSL Permittivity	36.8
Group UID	CW 0--	TSL Conductivity [S/m]	5.01
Conversion Factor	5.2	Phantom Section TSL	Flat HSL

Hardware Setup

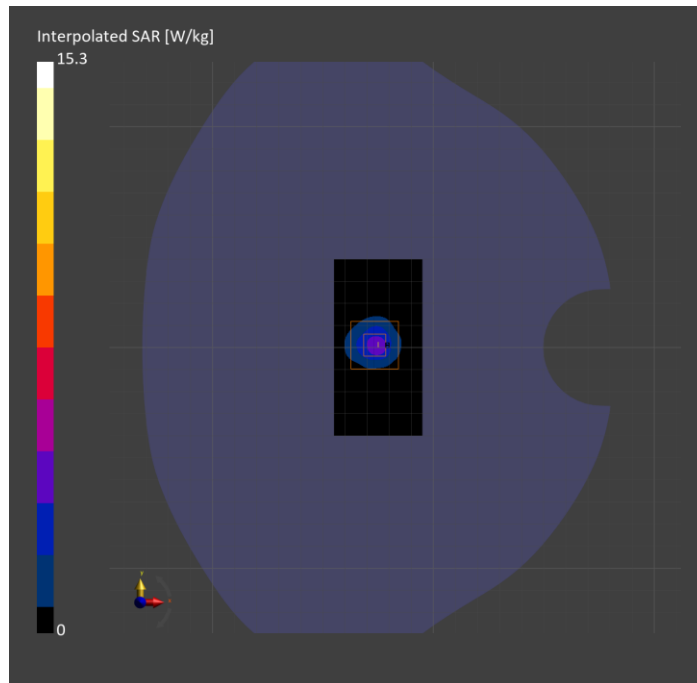
Probe Calibration Date	EX3DV4 - SN3902 2024-03-12	Phantom	Twin-SAM V5.0 (30deg probe tilt)
DAE Calibration Date	DAE4 Sn1799 2023-04-04	TSL Type	HBBL-600-10000
Software Version	16.2.4.2524		

Scans Setup

	Area Scan	Zoom Scan
Grid Extents [mm]	40.0 x 80.0	22.0 x 22.0 x 22.0
Grid Steps [mm]	10.0 x 10.0	4.0 x 4.0 x 1.4
Sensor Surface [mm]	3.0	1.4
Graded Grid	N/A	Yes
M2/M1 [%]		61.0
Dist 3dB Peak [mm]		7.2

Measurement Results

	Area Scan	Zoom Scan
psSAR1g [W/Kg]	3.24	3.61
psSAR10g [W/Kg]	0.946	1.03
Power Drift [dB]	N/A	-0.01



System Performance Check Report for D5GHzV2 - SN1003

Exposure Conditions

Frequency [MHz] Channel Number	5600.000 0	TSL Permittivity	34.5
Group UID	CW 0--	TSL Conductivity [S/m]	4.99
Conversion Factor	4.93	Phantom Section TSL	Flat HSL

Hardware Setup

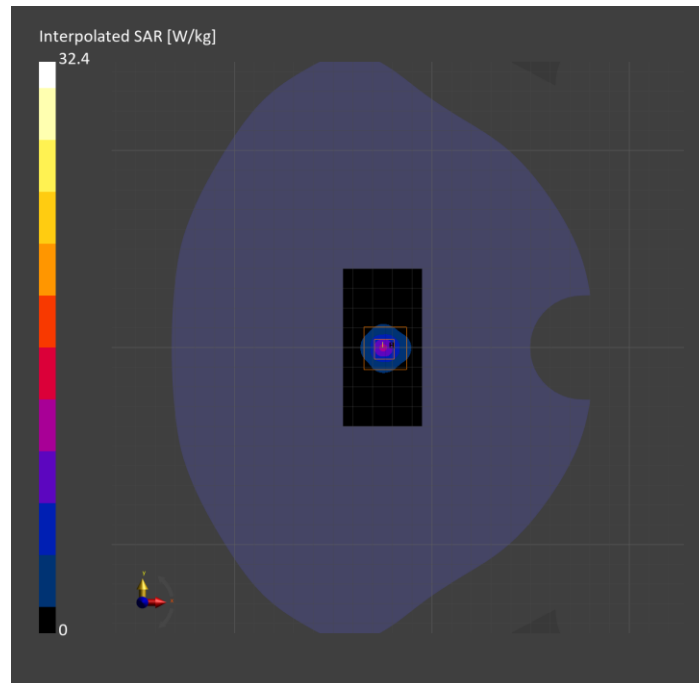
Probe Calibration Date	EX3DV4 - SN3902 2024-03-12	Phantom	Twin-SAM V5.0 (30deg probe tilt)
DAE Calibration Date	DAE4 Sn1799 2023-04-04	TSL Type	HBBL-600-10000
Software Version	16.2.4.2524		

Scans Setup

	Area Scan	Zoom Scan
Grid Extents [mm]	40.0 x 80.0	22.0 x 22.0 x 22.0
Grid Steps [mm]	10.0 x 10.0	4.0 x 4.0 x 1.4
Sensor Surface [mm]	3.0	1.4
Graded Grid	N/A	Yes
M2/M1 [%]		61.2
Dist 3dB Peak [mm]		7.4

Measurement Results

	Area Scan	Zoom Scan
psSAR1g [W/Kg]	7.08	7.75
psSAR10g [W/Kg]	1.99	2.21
Power Drift [dB]	N/A	0.03



System Performance Check Report for D750V3 - SN1019

Exposure Conditions

Frequency [MHz] Channel Number	750.000 0	TSL Permittivity	39.8
Group UID	CW 0--	TSL Conductivity [S/m]	0.856
Conversion Factor	10.3	Phantom Section TSL	Flat HSL

Hardware Setup

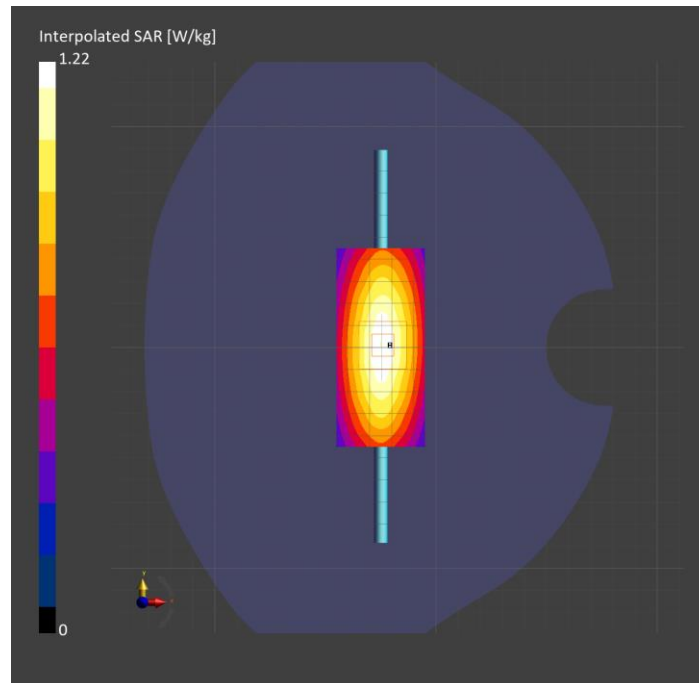
Probe Calibration Date	EX3DV4 - SN3989 2024-01-09	Phantom	Twin-SAM V8.0 (30deg probe tilt)
DAE Calibration Date	DAE4 Sn1433 2024-02-08	TSL Type	HBBL-600-10000
Software Version	16.2.4.2524		

Scans Setup

	Area Scan	Zoom Scan
Grid Extents [mm]	40.0 x 90.0	30.0 x 30.0 x 30.0
Grid Steps [mm]	10.0 x 15.0	6.0 x 6.0 x 1.5
Sensor Surface [mm]	3.0	1.4
Graded Grid	N/A	Yes
M2/M1 [%]		89.4
Dist 3dB Peak [mm]		> 15.0

Measurement Results

	Area Scan	Zoom Scan
psSAR1g [W/Kg]	0.861	0.844
psSAR10g [W/Kg]	0.574	0.565
Power Drift [dB]	N/A	-0.05



System Performance Check Report for D1640V2 - SN324

Exposure Conditions

Frequency [MHz] Channel Number	1640.000 0	TSL Permittivity	38.1
Group UID	CW 0--	TSL Conductivity [S/m]	1.29
Conversion Factor	8.51	Phantom Section TSL	Flat HSL

Hardware Setup

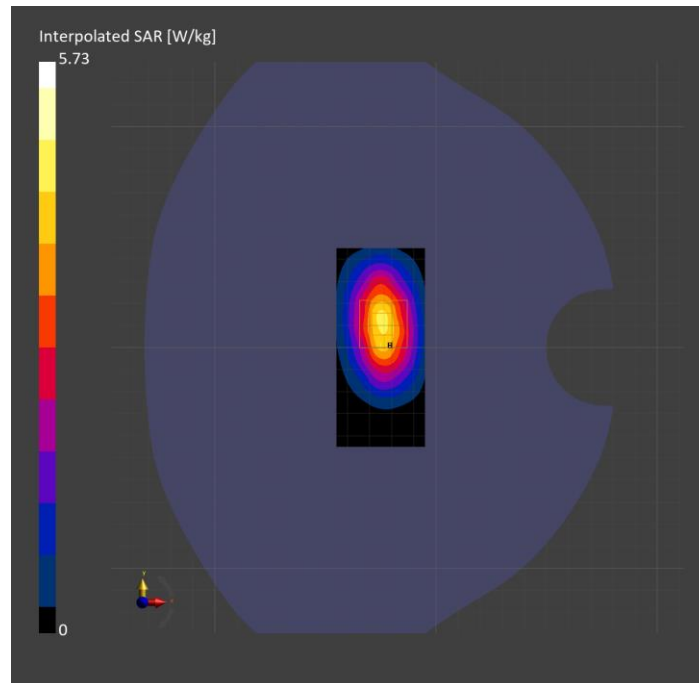
Probe Calibration Date	EX3DV4 - SN3989 2024-01-09	Phantom	Twin-SAM V8.0 (30deg probe tilt)
DAE Calibration Date	DAE4 Sn1433 2024-02-08	TSL Type	HBBL-600-10000
Software Version	16.2.4.2524		

Scans Setup

	Area Scan	Zoom Scan
Grid Extents [mm]	40.0 x 90.0	30.0 x 30.0 x 30.0
Grid Steps [mm]	10.0 x 15.0	6.0 x 6.0 x 1.5
Sensor Surface [mm]	3.0	1.4
Graded Grid	N/A	Yes
M2/M1 [%]		89.0
Dist 3dB Peak [mm]		10.8

Measurement Results

	Area Scan	Zoom Scan
psSAR1g [W/Kg]	3.67	3.56
psSAR10g [W/Kg]	2.01	1.97
Power Drift [dB]	N/A	0.02



System Performance Check Report for D1750V2 - SN1053

Exposure Conditions

Frequency [MHz] Channel Number	1750.000 0	TSL Permittivity	41.9
Group UID	CW 0--	TSL Conductivity [S/m]	1.29
Conversion Factor	8.98	Phantom Section TSL	Flat HSL

Hardware Setup

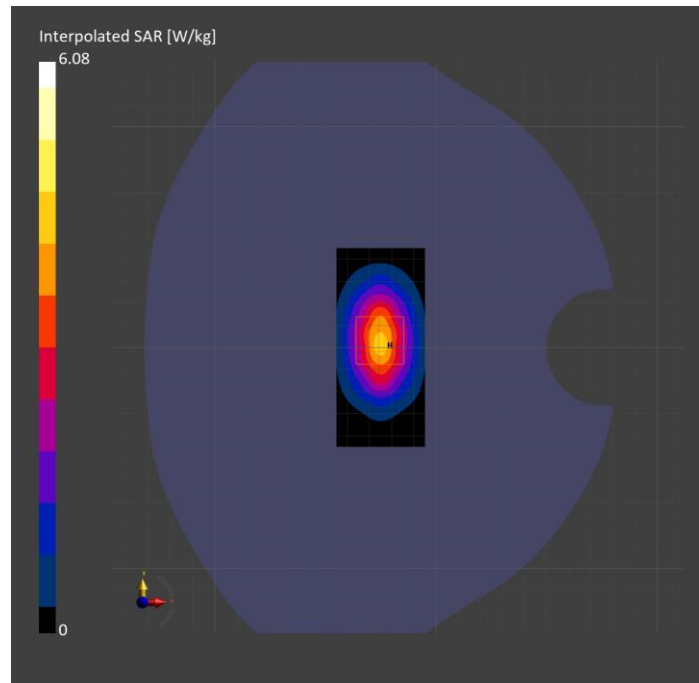
Probe Calibration Date	EX3DV4 - SN3989 2024-01-09	Phantom	Twin-SAM V8.0 (30deg probe tilt)
DAE Calibration Date	DAE4 Sn1433 2024-02-08	TSL Type	HBBL-600-10000
Software Version	16.2.4.2524		

Scans Setup

	Area Scan	Zoom Scan
Grid Extents [mm]	40.0 x 90.0	30.0 x 30.0 x 30.0
Grid Steps [mm]	10.0 x 15.0	6.0 x 6.0 x 1.5
Sensor Surface [mm]	3.0	1.4
Graded Grid	N/A	Yes
M2/M1 [%]		83.9
Dist 3dB Peak [mm]		10.3

Measurement Results

	Area Scan	Zoom Scan
psSAR1g [W/Kg]	3.46	3.38
psSAR10g [W/Kg]	1.85	1.82
Power Drift [dB]	N/A	-0.07



System Performance Check Report for D1750V2 - SN1050

Exposure Conditions

Frequency [MHz] Channel Number	1750.000 0	TSL Permittivity	42.2
Group UID	CW 0--	TSL Conductivity [S/m]	1.32
Conversion Factor	8.98	Phantom Section TSL	Flat HSL

Hardware Setup

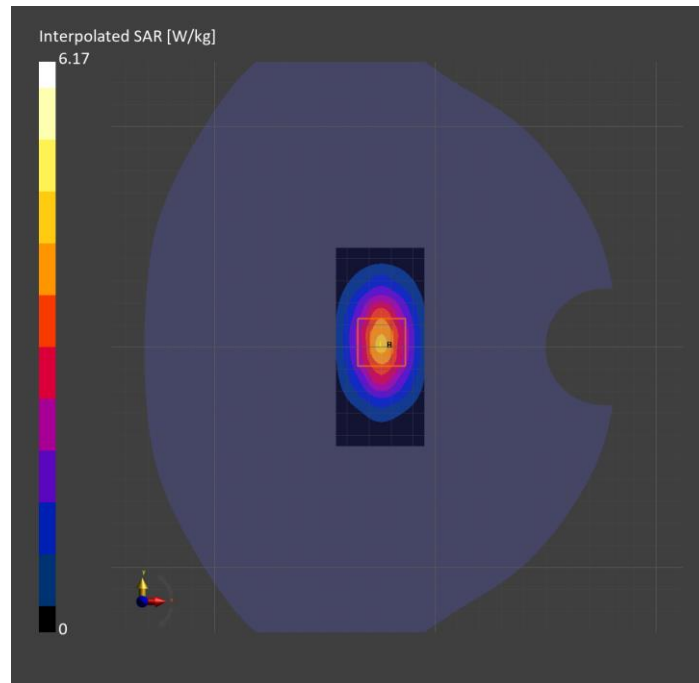
Probe Calibration Date	EX3DV4 - SN3989 2024-01-09	Phantom	Twin-SAM V8.0 (30deg probe tilt)
DAE Calibration Date	DAE4 Sn1433 2024-02-08	TSL Type	HBBL-600-10000
Software Version	16.2.4.2524		

Scans Setup

	Area Scan	Zoom Scan
Grid Extents [mm]	40.0 x 90.0	30.0 x 30.0 x 30.0
Grid Steps [mm]	10.0 x 15.0	6.0 x 6.0 x 1.5
Sensor Surface [mm]	3.0	1.4
Graded Grid	N/A	Yes
M2/M1 [%]		84.1
Dist 3dB Peak [mm]		10.8

Measurement Results

	Area Scan	Zoom Scan
psSAR1g [W/Kg]	3.46	3.46
psSAR10g [W/Kg]	1.86	1.88
Power Drift [dB]	-0.09	-0.08



System Performance Check Report for D2600V2 - SN1036

Exposure Conditions

Frequency [MHz] Channel Number	2600.000 0	TSL Permittivity	37.1
Group UID	CW 0--	TSL Conductivity [S/m]	1.88
Conversion Factor	7.97	Phantom Section TSL	Flat HSL

Hardware Setup

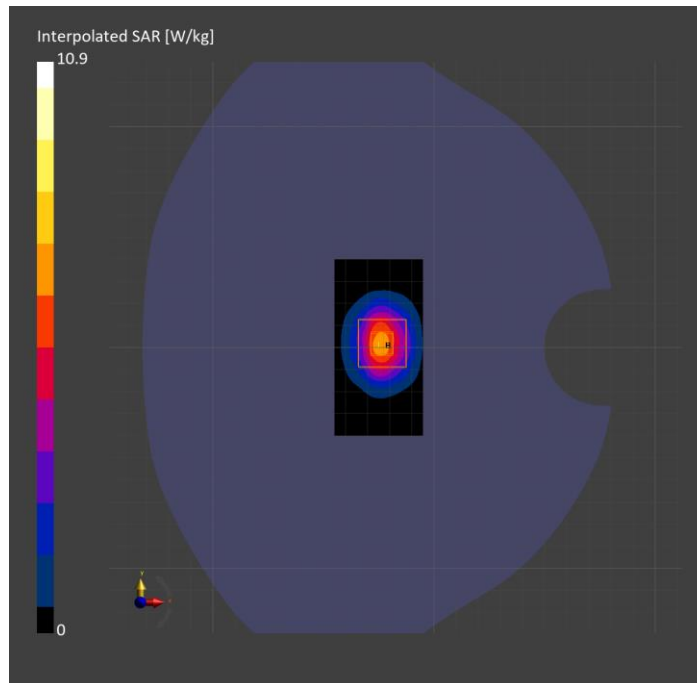
Probe Calibration Date	EX3DV4 - SN3989 2024-01-09	Phantom	Twin-SAM V8.0 (30deg probe tilt)
DAE Calibration Date	DAE4 Sn1433 2024-02-08	TSL Type	HBBL-600-10000
Software Version	16.2.4.2524		

Scans Setup

	Area Scan	Zoom Scan
Grid Extents [mm]	40.0 x 80.0	30.0 x 30.0 x 30.0
Grid Steps [mm]	10.0 x 10.0	5.0 x 5.0 x 1.5
Sensor Surface [mm]	3.0	1.4
Graded Grid	N/A	Yes
M2/M1 [%]		81.5
Dist 3dB Peak [mm]		9.0

Measurement Results

	Area Scan	Zoom Scan
psSAR1g [W/Kg]	5.43	5.43
psSAR10g [W/Kg]	2.46	2.49
Power Drift [dB]	-0.02	0.00



System Performance Check Report for D2450V2 - SN748

Exposure Conditions

Frequency [MHz] Channel Number	2450.000 0	TSL Permittivity	38.2
Group UID	CW 0--	TSL Conductivity [S/m]	1.73
Conversion Factor	7.92	Phantom Section TSL	Flat HSL

Hardware Setup

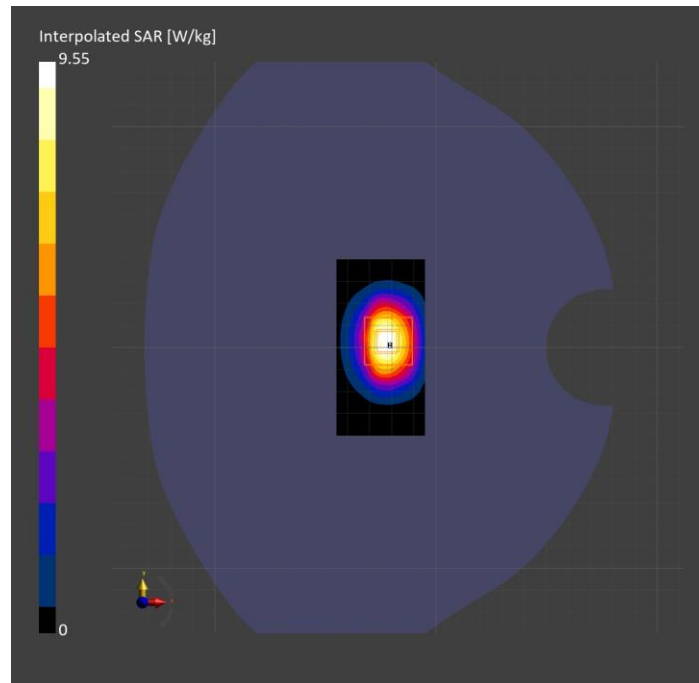
Probe Calibration Date	EX3DV4 - SN3989 2024-01-09	Phantom	Twin-SAM V8.0 (30deg probe tilt)
DAE Calibration Date	DAE4 Sn1433 2024-02-08	TSL Type	HBBL-600-10000
Software Version	16.2.4.2524		

Scans Setup

	Area Scan	Zoom Scan
Grid Extents [mm]	40.0 x 80.0	30.0 x 30.0 x 30.0
Grid Steps [mm]	10.0 x 10.0	5.0 x 5.0 x 1.5
Sensor Surface [mm]	3.0	1.4
Graded Grid	N/A	Yes
M2/M1 [%]		82.1
Dist 3dB Peak [mm]		9.0

Measurement Results

	Area Scan	Zoom Scan
psSAR1g [W/Kg]	4.81	4.87
psSAR10g [W/Kg]	2.31	2.32
Power Drift [dB]	-0.03	-0.04



System Performance Check Report for D1750V2 - SN1053

Exposure Conditions

Frequency [MHz] Channel Number	1750.000 0	TSL Permittivity	42.7
Group UID	CW 0--	TSL Conductivity [S/m]	1.32
Conversion Factor	8.49	Phantom Section TSL	Flat HSL

Hardware Setup

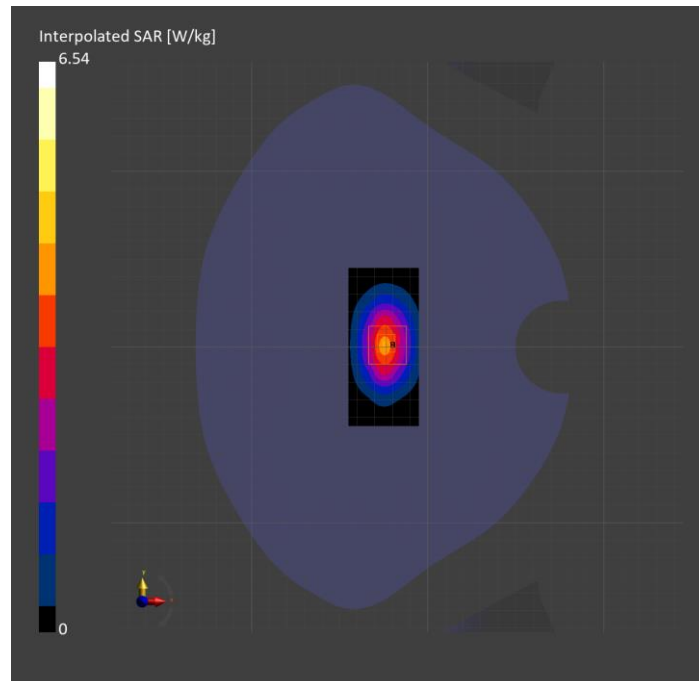
Probe Calibration Date	EX3DV4 - SN7569 2024-04-15	Phantom	Twin-SAM V5.0 (30deg probe tilt)
DAE Calibration Date	DAE4 Sn1545 2024-02-09	TSL Type	HBBL-600-10000
Software Version	16.2.4.2524		

Scans Setup

	Area Scan	Zoom Scan
Grid Extents [mm]	40.0 x 90.0	30.0 x 30.0 x 30.0
Grid Steps [mm]	10.0 x 15.0	6.0 x 6.0 x 1.5
Sensor Surface [mm]	3.0	1.4
Graded Grid	N/A	Yes
M2/M1 [%]		81.1
Dist 3dB Peak [mm]		10.8

Measurement Results

	Area Scan	Zoom Scan
psSAR1g [W/Kg]	3.28	3.40
psSAR10g [W/Kg]	1.76	1.81
Power Drift [dB]	N/A	-0.02



System Performance Check Report for D1750V2 - SN1050

Exposure Conditions

Frequency [MHz] Channel Number	1750.000 0	TSL Permittivity	39.0
Group UID	CW 0--	TSL Conductivity [S/m]	1.28
Conversion Factor	8.49	Phantom Section TSL	Flat HSL

Hardware Setup

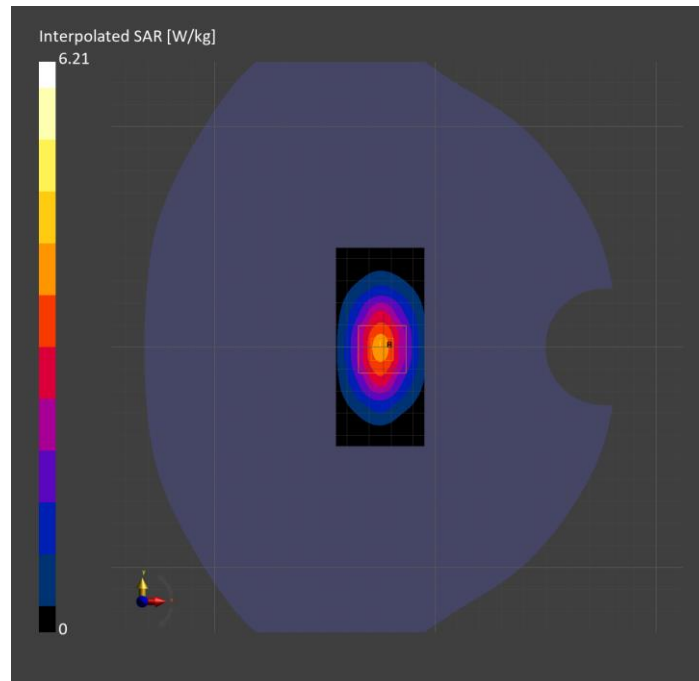
Probe Calibration Date	EX3DV4 - SN7569 2024-04-15	Phantom	Twin-SAM V5.0 (30deg probe tilt)
DAE Calibration Date	DAE4 Sn1545 2024-02-09	TSL Type	HBBL-600-10000
Software Version	16.2.4.2524		

Scans Setup

	Area Scan	Zoom Scan
Grid Extents [mm]	40.0 x 90.0	30.0 x 30.0 x 30.0
Grid Steps [mm]	10.0 x 15.0	6.0 x 6.0 x 1.5
Sensor Surface [mm]	3.0	1.4
Graded Grid	N/A	Yes
M2/M1 [%]		80.2
Dist 3dB Peak [mm]		9.6

Measurement Results

	Area Scan	Zoom Scan
psSAR1g [W/Kg]	3.19	3.32
psSAR10g [W/Kg]	1.70	1.79
Power Drift [dB]	N/A	-0.00



System Performance Check Report for D1900V2 - SN5d140

Exposure Conditions

Frequency [MHz] Channel Number	1900.000 0	TSL Permittivity	42.5
Group UID	CW 0--	TSL Conductivity [S/m]	1.38
Conversion Factor	7.98	Phantom Section TSL	Flat HSL

Hardware Setup

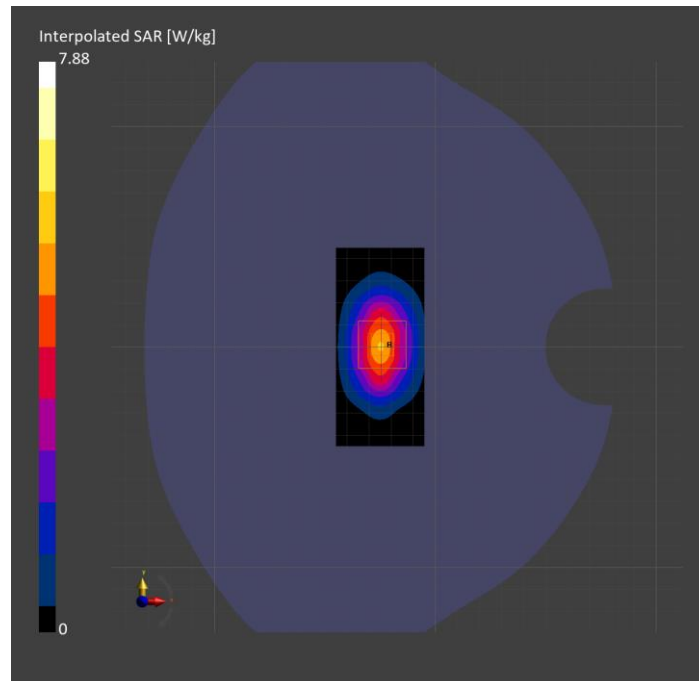
Probe Calibration Date	EX3DV4 - SN7569 2024-04-15	Phantom	Twin-SAM V5.0 (30deg probe tilt)
DAE Calibration Date	DAE4 Sn1545 2024-02-09	TSL Type	HBBL-600-10000
Software Version	16.2.4.2524		

Scans Setup

	Area Scan	Zoom Scan
Grid Extents [mm]	40.0 x 90.0	30.0 x 30.0 x 30.0
Grid Steps [mm]	10.0 x 15.0	6.0 x 6.0 x 1.5
Sensor Surface [mm]	3.0	1.4
Graded Grid	N/A	Yes
M2/M1 [%]		82.6
Dist 3dB Peak [mm]		9.6

Measurement Results

	Area Scan	Zoom Scan
psSAR1g [W/Kg]	4.21	4.24
psSAR10g [W/Kg]	2.18	2.24
Power Drift [dB]	N/A	0.00



System Performance Check Report for D1750V2 - SN1053

Exposure Conditions

Frequency [MHz] Channel Number	1750.000 0	TSL Permittivity	40.0
Group UID	CW 0--	TSL Conductivity [S/m]	1.30
Conversion Factor	8.49	Phantom Section TSL	Flat HSL

Hardware Setup

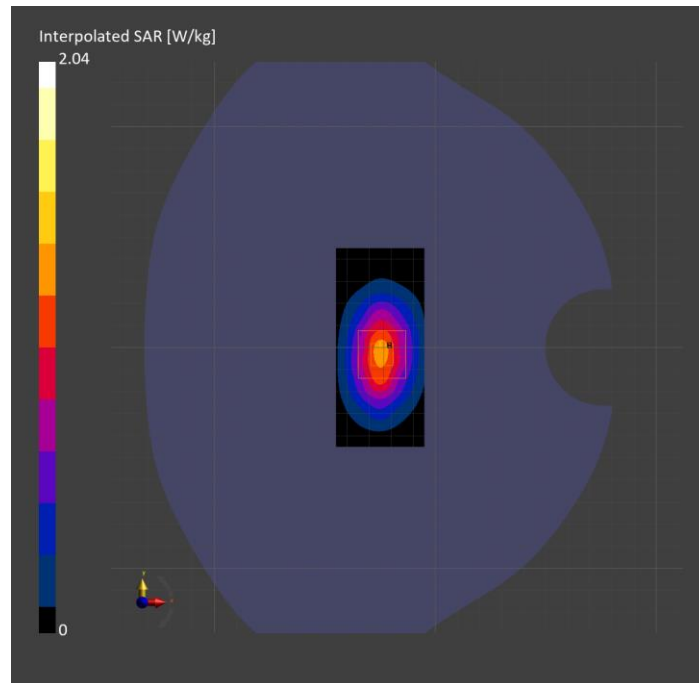
Probe Calibration Date	EX3DV4 - SN7569 2024-04-15	Phantom	Twin-SAM V5.0 (30deg probe tilt)
DAE Calibration Date	DAE4 Sn1545 2024-02-09	TSL Type	HBBL-600-10000
Software Version	16.2.4.2524		

Scans Setup

	Area Scan	Zoom Scan
Grid Extents [mm]	40.0 x 90.0	30.0 x 30.0 x 30.0
Grid Steps [mm]	10.0 x 15.0	6.0 x 6.0 x 1.5
Sensor Surface [mm]	3.0	1.4
Graded Grid	N/A	Yes
M2/M1 [%]		80.5
Dist 3dB Peak [mm]		9.9

Measurement Results

	Area Scan	Zoom Scan
psSAR1g [W/Kg]	1.03	1.07
psSAR10g [W/Kg]	0.552	0.574
Power Drift [dB]	N/A	-0.11



System Performance Check Report for D835V2 - SN4d117

Exposure Conditions

Frequency [MHz] Channel Number	835.000 0	TSL Permittivity	43.0
Group UID	CW 0--	TSL Conductivity [S/m]	0.926
Conversion Factor	9.5	Phantom Section TSL	Flat HSL

Hardware Setup

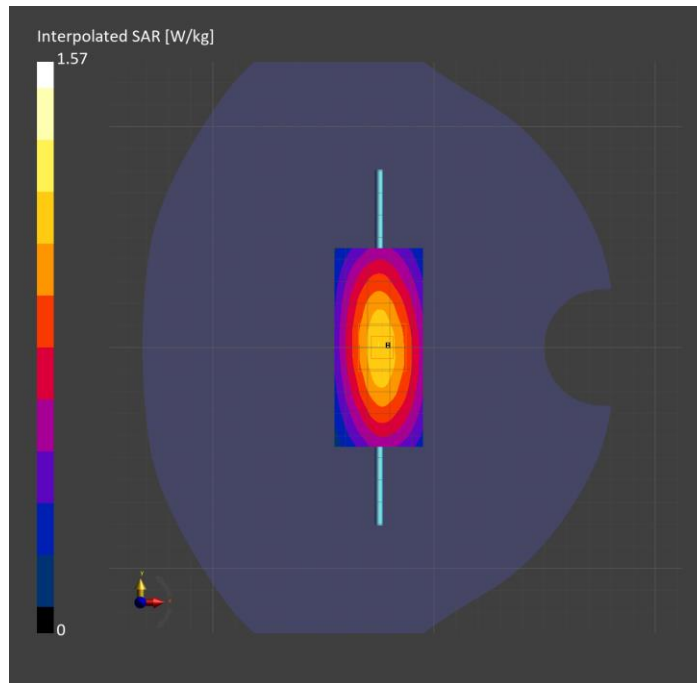
Probe Calibration Date	EX3DV4 - SN7589 2024-04-15	Phantom	Twin-SAM V8.0 (30deg probe tilt)
DAE Calibration Date	DAE4 Sn1434 2023-06-13	TSL Type	HBBL-600-10000
Software Version	16.2.4.2524		

Scans Setup

	Area Scan	Zoom Scan
Grid Extents [mm]	40.0 x 90.0	30.0 x 30.0 x 30.0
Grid Steps [mm]	10.0 x 15.0	6.0 x 6.0 x 1.5
Sensor Surface [mm]	3.0	1.4
Graded Grid	N/A	Yes
M2/M1 [%]		87.2
Dist 3dB Peak [mm]		16.8

Measurement Results

	Area Scan	Zoom Scan
psSAR1g [W/Kg]	1.02	1.04
psSAR10g [W/Kg]	0.673	0.683
Power Drift [dB]	N/A	-0.03



System Performance Check Report for D1750V2 - SN1053

Exposure Conditions

Frequency [MHz] Channel Number	1750.000 0	TSL Permittivity	38.7
Group UID	CW 0--	TSL Conductivity [S/m]	1.42
Conversion Factor	8.37	Phantom Section TSL	Flat HSL

Hardware Setup

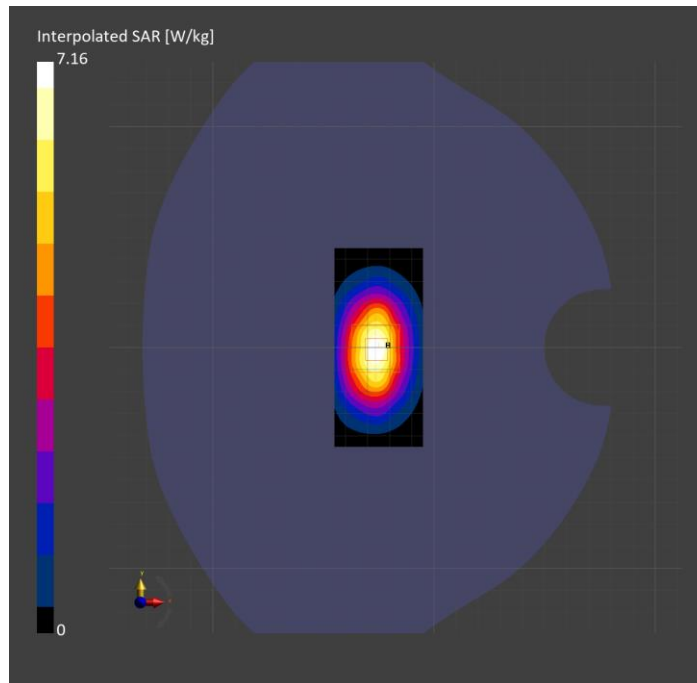
Probe Calibration Date	EX3DV4 - SN7589 2024-04-15	Phantom	Twin-SAM V8.0 (30deg probe tilt)
DAE Calibration Date	DAE4 Sn1798 2024-05-22	TSL Type	HBBL-600-10000
Software Version	16.2.4.2524		

Scans Setup

	Area Scan	Zoom Scan
Grid Extents [mm]	40.0 x 90.0	30.0 x 30.0 x 30.0
Grid Steps [mm]	10.0 x 15.0	6.0 x 6.0 x 1.5
Sensor Surface [mm]	3.0	1.4
Graded Grid	N/A	Yes
M2/M1 [%]		82.0
Dist 3dB Peak [mm]		10.9

Measurement Results

	Area Scan	Zoom Scan
psSAR1g [W/Kg]	3.80	3.83
psSAR10g [W/Kg]	2.05	2.04
Power Drift [dB]	N/A	-0.01



System Performance Check Report for D1900V2 - SN5d140

Exposure Conditions

Frequency [MHz] Channel Number	1900.000 0	TSL Permittivity	37.5
Group UID	CW 0--	TSL Conductivity [S/m]	1.47
Conversion Factor	8.04	Phantom Section TSL	Flat HSL

Hardware Setup

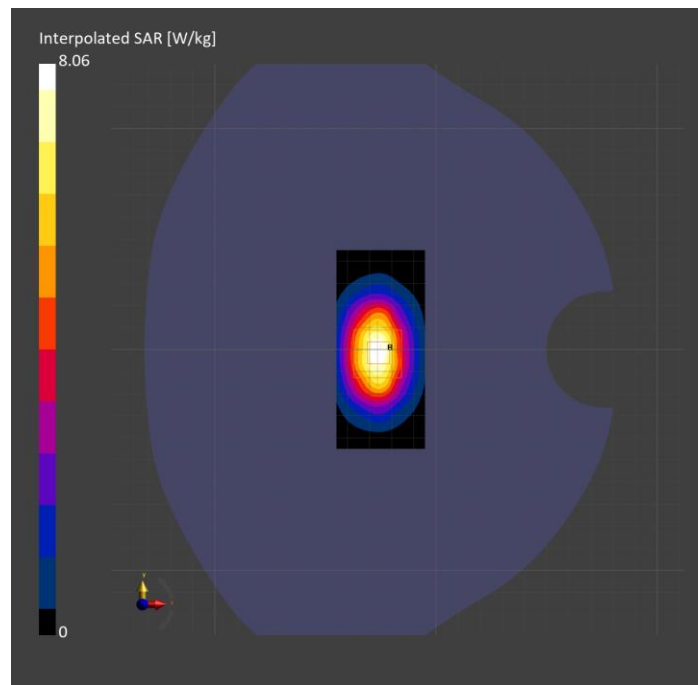
Probe Calibration Date	EX3DV4 - SN7589 2024-04-15	Phantom	Twin-SAM V8.0 (30deg probe tilt)
DAE Calibration Date	DAE4 Sn1798 2024-05-22	TSL Type	HBBL-600-10000
Software Version	16.2.4.2524		

Scans Setup

	Area Scan	Zoom Scan
Grid Extents [mm]	40.0 x 90.0	30.0 x 30.0 x 30.0
Grid Steps [mm]	10.0 x 15.0	6.0 x 6.0 x 1.5
Sensor Surface [mm]	3.0	1.4
Graded Grid	N/A	Yes
M2/M1 [%]		81.6
Dist 3dB Peak [mm]		10.9

Measurement Results

	Area Scan	Zoom Scan
psSAR1g [W/Kg]	4.23	4.26
psSAR10g [W/Kg]	2.22	2.21
Power Drift [dB]	N/A	-0.03



System Performance Check Report for D750V3 - SN1019

Exposure Conditions

Frequency [MHz] Channel Number	750.000 0	TSL Permittivity	41.6
Group UID	CW 0--	TSL Conductivity [S/m]	0.897
Conversion Factor	9.63	Phantom Section TSL	Flat HSL

Hardware Setup

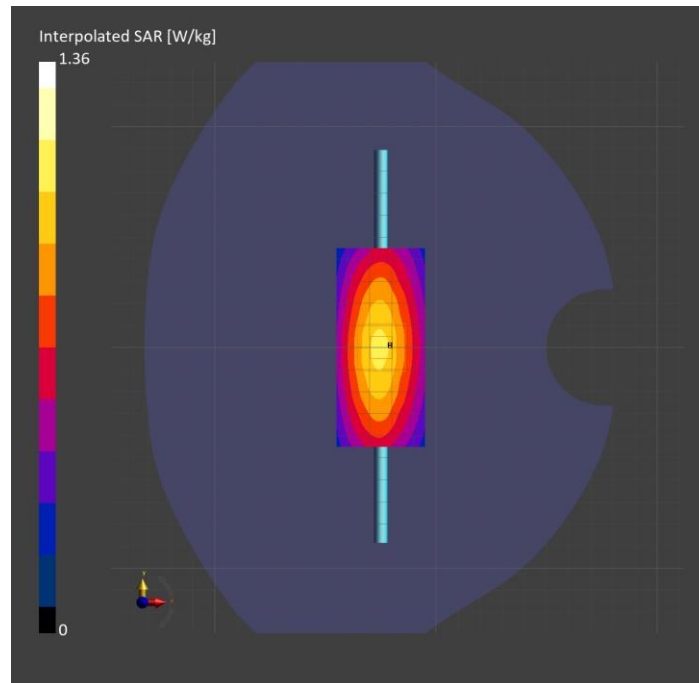
Probe Calibration Date	EX3DV4 - SN7589 2024-04-15	Phantom	Twin-SAM V8.0 (30deg probe tilt)
DAE Calibration Date	DAE4 Sn1798 2024-05-22	TSL Type	HBBL-600-10000
Software Version	16.2.4.2524		

Scans Setup

	Area Scan	Zoom Scan
Grid Extents [mm]	40.0 x 90.0	30.0 x 30.0 x 30.0
Grid Steps [mm]	10.0 x 15.0	6.0 x 6.0 x 1.5
Sensor Surface [mm]	3.0	1.4
Graded Grid	N/A	Yes
M2/M1 [%]		89.2
Dist 3dB Peak [mm]		> 15.0

Measurement Results

	Area Scan	Zoom Scan
psSAR1g [W/Kg]	0.929	0.927
psSAR10g [W/Kg]	0.619	0.614
Power Drift [dB]	N/A	0.00



System Performance Check Report for D750V3 - SN1071

Exposure Conditions

Frequency [MHz] Channel Number	750.000 0	TSL Permittivity	39.6
Group UID	CW 0--	TSL Conductivity [S/m]	0.871
Conversion Factor	9.63	Phantom Section TSL	Flat HSL

Hardware Setup

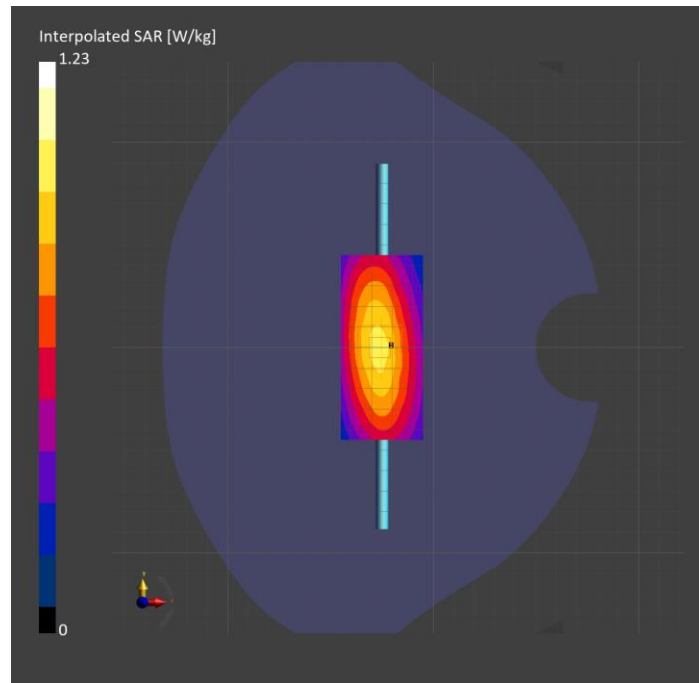
Probe Calibration Date	EX3DV4 - SN7589 2024-04-15	Phantom	Twin-SAM V8.0 (30deg probe tilt)
DAE Calibration Date	DAE4 Sn1798 2024-05-22	TSL Type	HBBL-600-10000
Software Version	16.2.4.2524		

Scans Setup

	Area Scan	Zoom Scan
Grid Extents [mm]	40.0 x 90.0	30.0 x 30.0 x 30.0
Grid Steps [mm]	10.0 x 15.0	6.0 x 6.0 x 1.5
Sensor Surface [mm]	3.0	1.4
Graded Grid	N/A	Yes
M2/M1 [%]		88.0
Dist 3dB Peak [mm]		22.1

Measurement Results

	Area Scan	Zoom Scan
psSAR1g [W/Kg]	0.849	0.844
psSAR10g [W/Kg]	0.565	0.561
Power Drift [dB]	N/A	-0.01



System Performance Check Report for D750V3 - SN1019

Exposure Conditions

Frequency [MHz] Channel Number	750.000 0	TSL Permittivity	43.4
Group UID	CW 0--	TSL Conductivity [S/m]	0.864
Conversion Factor	9.27	Phantom Section TSL	Flat HSL

Hardware Setup

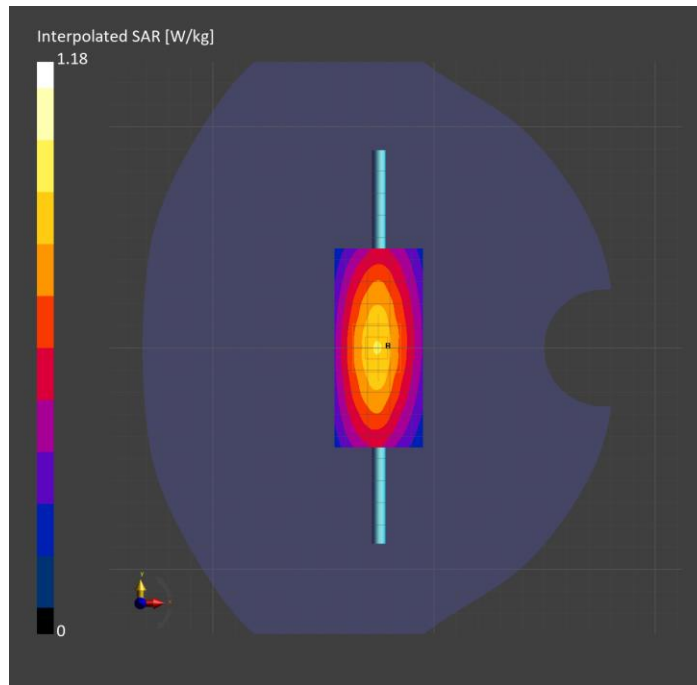
Probe Calibration Date	EX3DV4 - SN7482 2024-04-15	Phantom	Twin-SAM V5.0 (30deg probe tilt)
DAE Calibration Date	DAE4 Sn1239 2024-03-06	TSL Type	HBBL-600-10000
Software Version	16.2.4.2524		

Scans Setup

	Area Scan	Zoom Scan
Grid Extents [mm]	40.0 x 90.0	30.0 x 30.0 x 30.0
Grid Steps [mm]	10.0 x 15.0	6.0 x 6.0 x 1.5
Sensor Surface [mm]	3.0	1.4
Graded Grid	N/A	Yes
M2/M1 [%]		89.2
Dist 3dB Peak [mm]		17.8

Measurement Results

	Area Scan	Zoom Scan
psSAR1g [W/Kg]	0.770	0.798
psSAR10g [W/Kg]	0.512	0.531
Power Drift [dB]	N/A	0.13



System Performance Check Report for D1900V2 - SN5d140

Exposure Conditions

Frequency [MHz] Channel Number	1900.000 0	TSL Permittivity	37.7
Group UID	CW 0--	TSL Conductivity [S/m]	1.35
Conversion Factor	7.48	Phantom Section TSL	Flat HSL

Hardware Setup

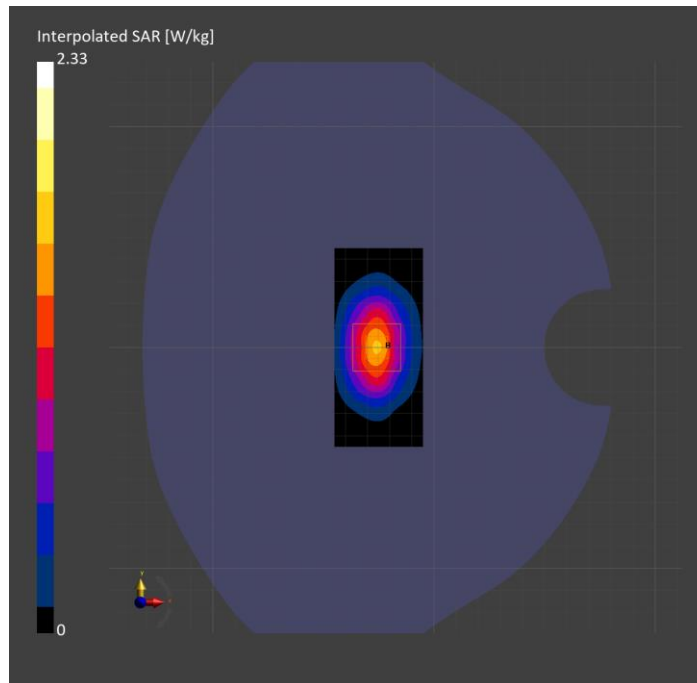
Probe Calibration Date	EX3DV4 - SN7482 2024-04-15	Phantom	Twin-SAM V5.0 (30deg probe tilt)
DAE Calibration Date	DAE4 Sn1239 2024-03-06	TSL Type	HBBL-600-10000
Software Version	16.2.4.2524		

Scans Setup

	Area Scan	Zoom Scan
Grid Extents [mm]	40.0 x 90.0	30.0 x 30.0 x 30.0
Grid Steps [mm]	10.0 x 15.0	6.0 x 6.0 x 1.5
Sensor Surface [mm]	3.0	1.4
Graded Grid	N/A	Yes
M2/M1 [%]		83.2
Dist 3dB Peak [mm]		9.6

Measurement Results

	Area Scan	Zoom Scan
psSAR1g [W/Kg]	1.26	1.26
psSAR10g [W/Kg]	0.655	0.669
Power Drift [dB]	N/A	0.01



System Performance Check Report for D1900V2 - SN5d140

Exposure Conditions

Frequency [MHz] Channel Number	1900.000 0	TSL Permittivity	42.0
Group UID	CW 0--	TSL Conductivity [S/m]	1.48
Conversion Factor	7.48	Phantom Section TSL	Flat HSL

Hardware Setup

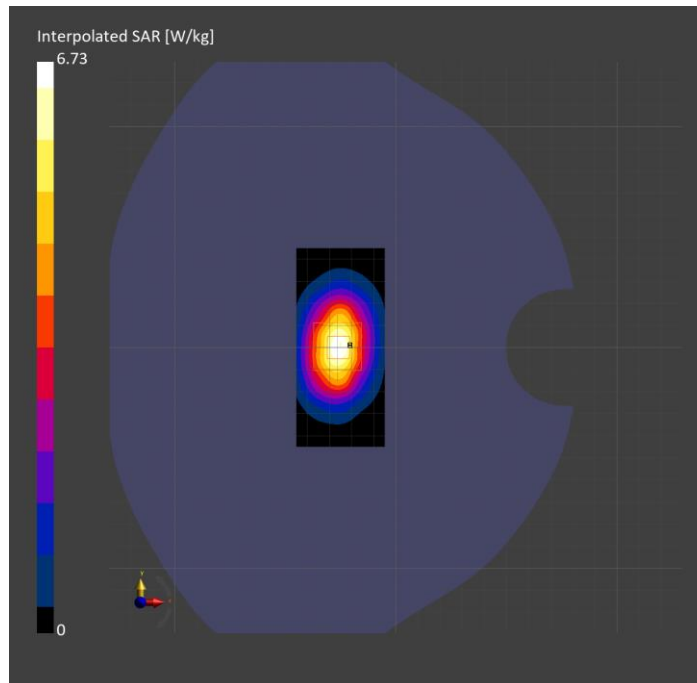
Probe Calibration Date	EX3DV4 - SN7482 2024-04-15	Phantom	Twin-SAM V5.0 (30deg probe tilt)
DAE Calibration Date	DAE4 Sn1239 2024-03-06	TSL Type	HBBL-600-10000
Software Version	16.2.4.2524		

Scans Setup

	Area Scan	Zoom Scan
Grid Extents [mm]	40.0 x 90.0	30.0 x 30.0 x 30.0
Grid Steps [mm]	10.0 x 15.0	6.0 x 6.0 x 1.5
Sensor Surface [mm]	3.0	1.4
Graded Grid	N/A	Yes
M2/M1 [%]		82.8
Dist 3dB Peak [mm]		9.7

Measurement Results

	Area Scan	Zoom Scan
psSAR1g [W/Kg]	3.59	3.65
psSAR10g [W/Kg]	1.86	1.92
Power Drift [dB]	N/A	-0.07



System Performance Check Report for D835V2 - SN4d117

Exposure Conditions

Frequency [MHz] Channel Number	835.000 0	TSL Permittivity	39.4
Group UID	CW 0--	TSL Conductivity [S/m]	0.921
Conversion Factor	8.63	Phantom Section TSL	Flat HSL

Hardware Setup

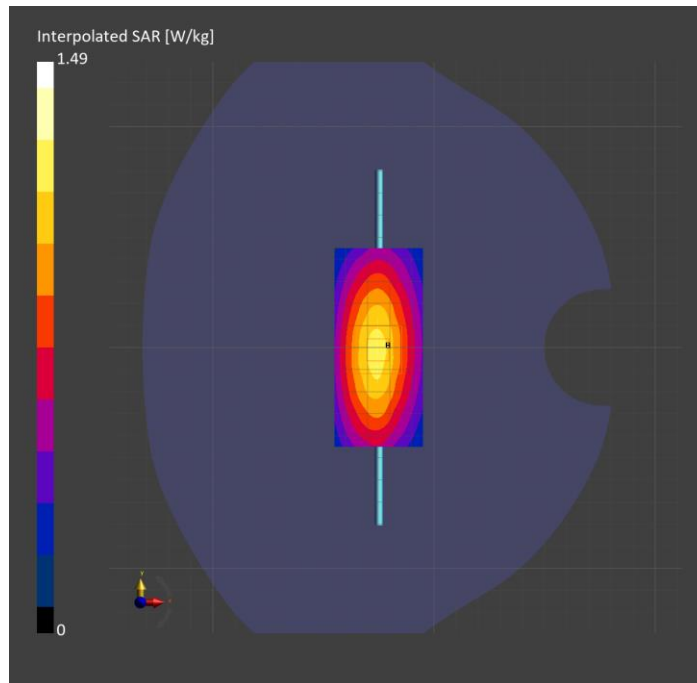
Probe Calibration Date	EX3DV4 - SN7482 2024-04-15	Phantom	Twin-SAM V5.0 (30deg probe tilt)
DAE Calibration Date	DAE4 Sn1239 2024-03-06	TSL Type	HBBL-600-10000
Software Version	16.2.4.2524		

Scans Setup

	Area Scan	Zoom Scan
Grid Extents [mm]	40.0 x 90.0	30.0 x 30.0 x 30.0
Grid Steps [mm]	10.0 x 15.0	6.0 x 6.0 x 1.5
Sensor Surface [mm]	3.0	1.4
Graded Grid	N/A	Yes
M2/M1 [%]		88.5
Dist 3dB Peak [mm]		17.2

Measurement Results

	Area Scan	Zoom Scan
psSAR1g [W/Kg]	1.02	1.02
psSAR10g [W/Kg]	0.673	0.684
Power Drift [dB]	N/A	0.01



System Performance Check Report for D1900V2 - SN5d140

Exposure Conditions

Frequency [MHz] Channel Number	1900.000 0	TSL Permittivity	38.4
Group UID	CW 0--	TSL Conductivity [S/m]	1.48
Conversion Factor	7.98	Phantom Section TSL	Flat HSL

Hardware Setup

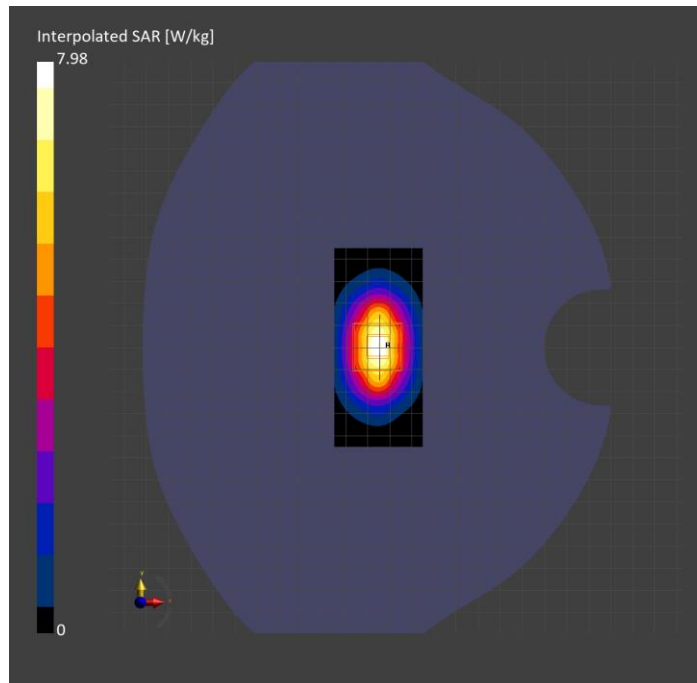
Probe Calibration Date	EX3DV4 - SN7850 2023-10-27	Phantom	Twin-SAM V8.0 (30deg probe tilt)
DAE Calibration Date	DAE4 Sn1673 2024-05-13	TSL Type	HBBL-600-10000
Software Version	16.2.4.2524		

Scans Setup

	Area Scan	Zoom Scan
Grid Extents [mm]	40.0 x 90.0	30.0 x 30.0 x 30.0
Grid Steps [mm]	10.0 x 15.0	6.0 x 6.0 x 1.5
Sensor Surface [mm]	3.0	1.4
Graded Grid	N/A	Yes
M2/M1 [%]		82.3
Dist 3dB Peak [mm]		9.7

Measurement Results

	Area Scan	Zoom Scan
psSAR1g [W/Kg]	4.25	4.19
psSAR10g [W/Kg]	2.19	2.16
Power Drift [dB]	-0.00	-0.00



System Performance Check Report for D1750V2 - SN1053

Exposure Conditions

Frequency [MHz] Channel Number	1750.000 0	TSL Permittivity	38.3
Group UID	CW 0--	TSL Conductivity [S/m]	1.33
Conversion Factor	8.89	Phantom Section TSL	Flat HSL

Hardware Setup

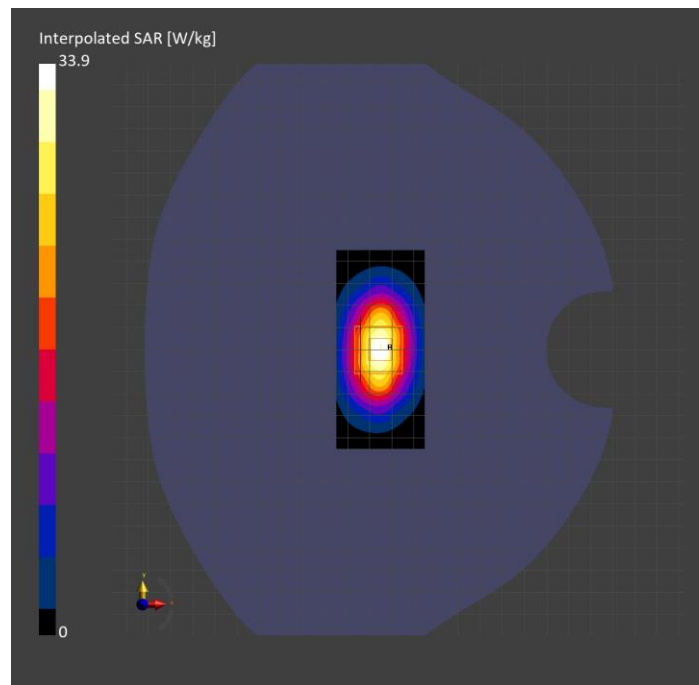
Probe Calibration Date	EX3DV4 - SN7850 2023-10-27	Phantom	Twin-SAM V8.0 (30deg probe tilt)
DAE Calibration Date	DAE4 Sn1673 2024-05-13	TSL Type	HBBL-600-10000
Software Version	16.2.4.2524		

Scans Setup

	Area Scan	Zoom Scan
Grid Extents [mm]	40.0 x 90.0	30.0 x 30.0 x 30.0
Grid Steps [mm]	10.0 x 15.0	6.0 x 6.0 x 1.5
Sensor Surface [mm]	3.0	1.4
Graded Grid	N/A	Yes
M2/M1 [%]		81.8
Dist 3dB Peak [mm]		6.0

Measurement Results

	Area Scan	Zoom Scan
psSAR1g [W/Kg]	3.34	3.34
psSAR10g [W/Kg]	1.77	1.74
Power Drift [dB]	-0.00	-0.00



System Performance Check Report for D2450V2 - SN748

Exposure Conditions

Frequency [MHz] Channel Number	2450.000 0	TSL Permittivity	37.4
Group UID	CW 0--	TSL Conductivity [S/m]	1.89
Conversion Factor	7.22	Phantom Section TSL	Flat HSL

Hardware Setup

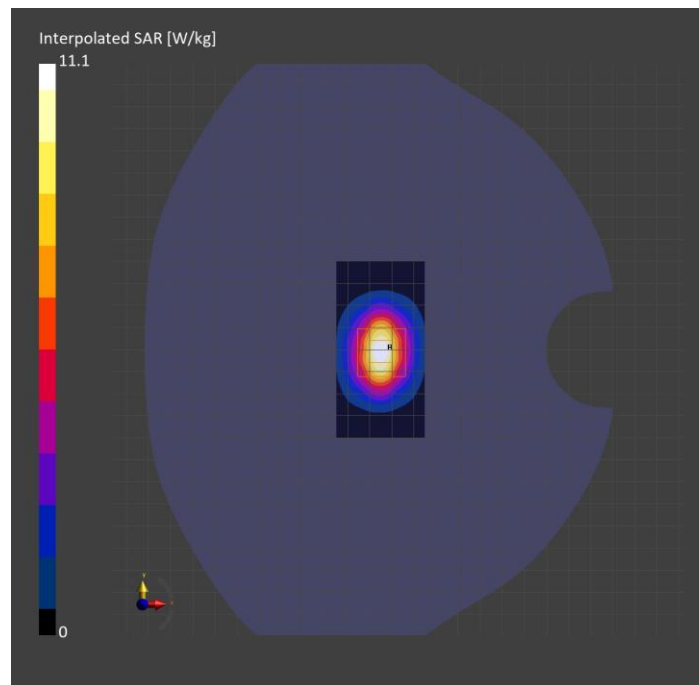
Probe Calibration Date	EX3DV4 - SN3929 2024-03-14	Phantom	Twin-SAM V8.0 (30deg probe tilt)
DAE Calibration Date	DAE4 Sn1673 2024-05-13	TSL Type	HBBL-600-10000
Software Version	16.2.4.2524		

Scans Setup

	Area Scan	Zoom Scan
Grid Extents [mm]	40.0 x 80.0	30.0 x 30.0 x 30.0
Grid Steps [mm]	10.0 x 10.0	5.0 x 5.0 x 1.5
Sensor Surface [mm]	3.0	1.4
Graded Grid	N/A	Yes
M2/M1 [%]		80.7
Dist 3dB Peak [mm]		9.0

Measurement Results

	Area Scan	Zoom Scan
psSAR1g [W/Kg]	5.48	5.43
psSAR10g [W/Kg]	2.54	2.52
Power Drift [dB]	N/A	0.02



System Performance Check Report for D2600V2 - SN1036

Exposure Conditions

Frequency [MHz] Channel Number	2600.000 0	TSL Permittivity	41.3
Group UID	CW 0--	TSL Conductivity [S/m]	2.02
Conversion Factor	7.07	Phantom Section TSL	Flat HSL

Hardware Setup

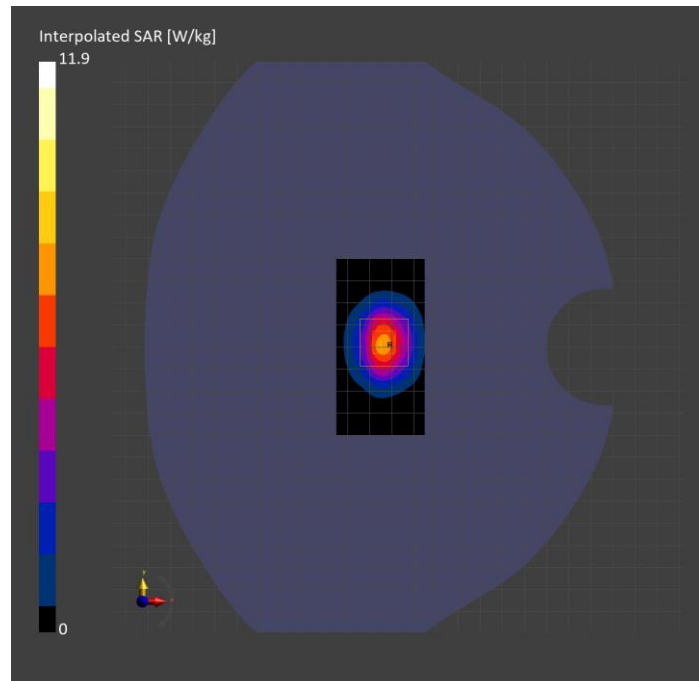
Probe Calibration Date	EX3DV4 - SN3929 2024-03-14	Phantom	Twin-SAM V8.0 (30deg probe tilt)
DAE Calibration Date	DAE4 Sn1673 2024-05-13	TSL Type	HBBL-600-10000
Software Version	16.2.4.2524		

Scans Setup

	Area Scan	Zoom Scan
Grid Extents [mm]	40.0 x 80.0	30.0 x 30.0 x 30.0
Grid Steps [mm]	10.0 x 10.0	5.0 x 5.0 x 1.5
Sensor Surface [mm]	3.0	1.4
Graded Grid	N/A	Yes
M2/M1 [%]		79.8
Dist 3dB Peak [mm]		9.0

Measurement Results

	Area Scan	Zoom Scan
psSAR1g [W/Kg]	5.76	5.54
psSAR10g [W/Kg]	2.61	2.49
Power Drift [dB]	N/A	-0.07



System Performance Check Report for D750V3 - SN1019

Exposure Conditions

Frequency [MHz] Channel Number	750.000 0	TSL Permittivity	42.6
Group UID	CW 0--	TSL Conductivity [S/m]	0.925
Conversion Factor	8.87	Phantom Section TSL	Flat HSL

Hardware Setup

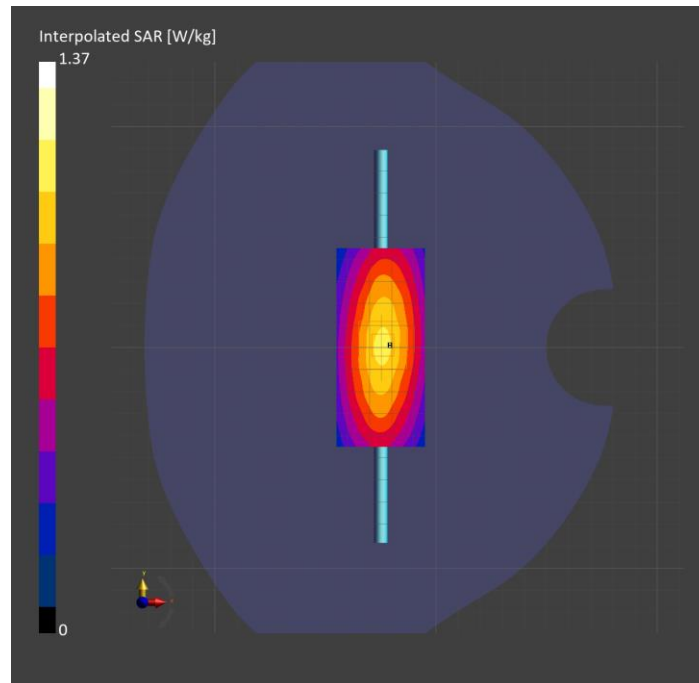
Probe Calibration Date	EX3DV4 - SN7448 2024-02-07	Phantom	Twin-SAM V8.0 (30deg probe tilt)
DAE Calibration Date	DAE4 Sn1784 2024-05-02	TSL Type	HBBL-600-10000
Software Version	16.2.4.2524		

Scans Setup

	Area Scan	Zoom Scan
Grid Extents [mm]	40.0 x 90.0	30.0 x 30.0 x 30.0
Grid Steps [mm]	10.0 x 15.0	6.0 x 6.0 x 1.5
Sensor Surface [mm]	3.0	1.4
Graded Grid	N/A	Yes
M2/M1 [%]		88.7
Dist 3dB Peak [mm]		> 15.0

Measurement Results

	Area Scan	Zoom Scan
psSAR1g [W/Kg]	0.927	0.920
psSAR10g [W/Kg]	0.617	0.604
Power Drift [dB]	N/A	-0.02



System Performance Check Report for D835V2 - SN4d002

Exposure Conditions

Frequency [MHz] Channel Number	835.000 0	TSL Permittivity	42.4
Group UID	CW 0--	TSL Conductivity [S/m]	0.956
Conversion Factor	9.03	Phantom Section TSL	Flat HSL

Hardware Setup

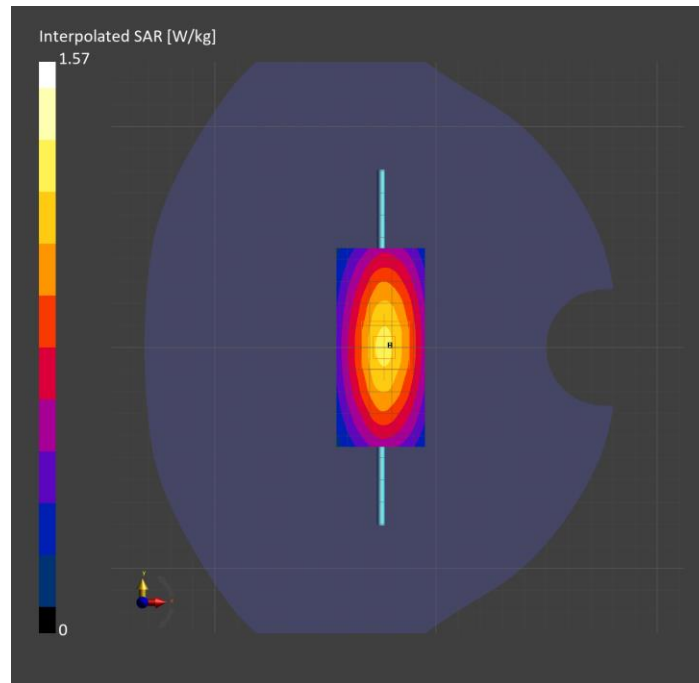
Probe Calibration Date	EX3DV4 - SN7448 2024-02-07	Phantom	Twin-SAM V8.0 (30deg probe tilt)
DAE Calibration Date	DAE4 Sn1784 2024-05-02	TSL Type	HBBL-600-10000
Software Version	16.2.4.2524		

Scans Setup

	Area Scan	Zoom Scan
Grid Extents [mm]	40.0 x 90.0	30.0 x 30.0 x 30.0
Grid Steps [mm]	10.0 x 15.0	6.0 x 6.0 x 1.5
Sensor Surface [mm]	3.0	1.4
Graded Grid	N/A	Yes
M2/M1 [%]		88.7
Dist 3dB Peak [mm]		18.4

Measurement Results

	Area Scan	Zoom Scan
psSAR1g [W/Kg]	1.07	1.06
psSAR10g [W/Kg]	0.703	0.688
Power Drift [dB]	N/A	-0.02



System Performance Check Report for D1750V2 - SN1053

Exposure Conditions

Frequency [MHz] Channel Number	1750.000 0	TSL Permittivity	38.2
Group UID	CW 0--	TSL Conductivity [S/m]	1.45
Conversion Factor	7.98	Phantom Section TSL	Flat HSL

Hardware Setup

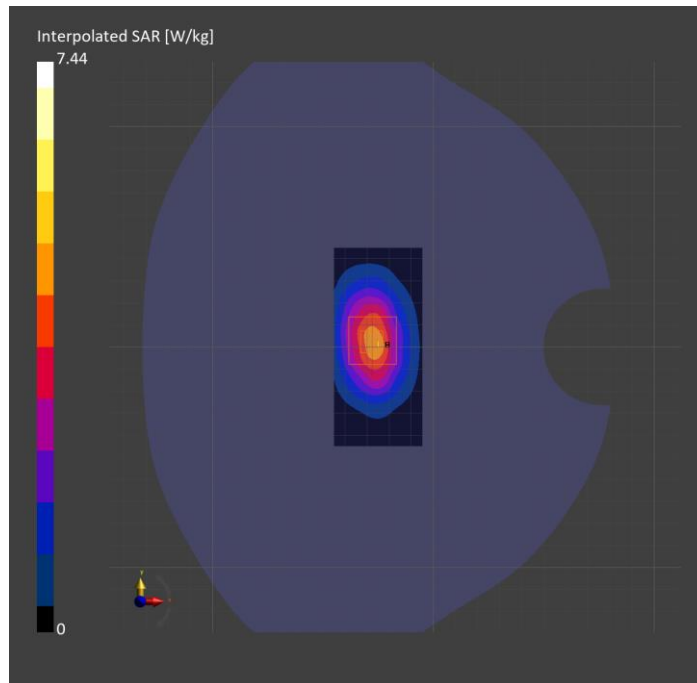
Probe Calibration Date	EX3DV4 - SN7448 2024-02-07	Phantom	Twin-SAM V8.0 (30deg probe tilt)
DAE Calibration Date	DAE4 Sn1784 2024-05-02	TSL Type	HBBL-600-10000
Software Version	16.2.4.2524		

Scans Setup

	Area Scan	Zoom Scan
Grid Extents [mm]	40.0 x 90.0	30.0 x 30.0 x 30.0
Grid Steps [mm]	10.0 x 15.0	6.0 x 6.0 x 1.5
Sensor Surface [mm]	3.0	1.4
Graded Grid	N/A	Yes
M2/M1 [%]		81.5
Dist 3dB Peak [mm]		10.8

Measurement Results

	Area Scan	Zoom Scan
psSAR1g [W/Kg]	3.92	3.97
psSAR10g [W/Kg]	2.13	2.11
Power Drift [dB]	N/A	0.00



System Performance Check Report for D1900V2 - SN5d140

Exposure Conditions

Frequency [MHz] Channel Number	1900.000 0	TSL Permittivity	37.7
Group UID	CW 0--	TSL Conductivity [S/m]	1.47
Conversion Factor	7.55	Phantom Section TSL	Flat HSL

Hardware Setup

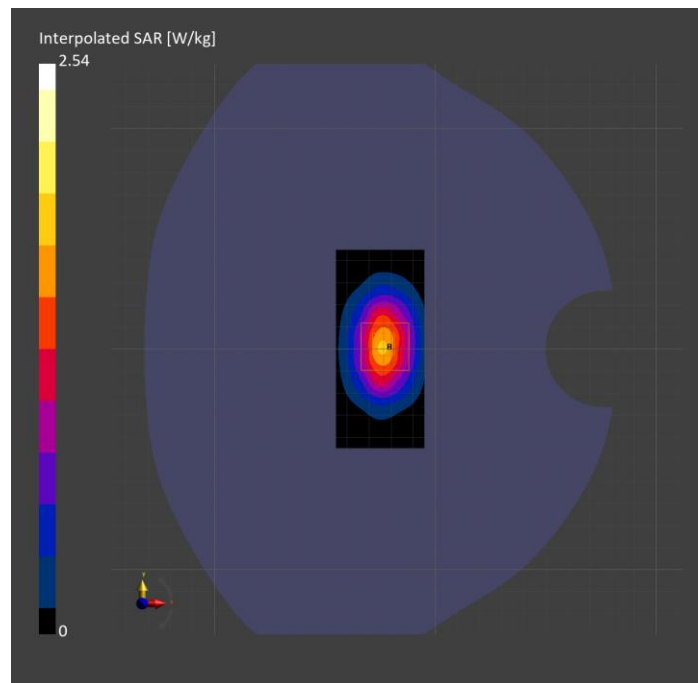
Probe Calibration Date	EX3DV4 - SN7448 2024-02-07	Phantom	Twin-SAM V8.0 (30deg probe tilt)
DAE Calibration Date	DAE4 Sn1784 2024-05-02	TSL Type	HBBL-600-10000
Software Version	16.2.4.2524		

Scans Setup

	Area Scan	Zoom Scan
Grid Extents [mm]	40.0 x 90.0	30.0 x 30.0 x 30.0
Grid Steps [mm]	10.0 x 15.0	6.0 x 6.0 x 1.5
Sensor Surface [mm]	3.0	1.4
Graded Grid	N/A	Yes
M2/M1 [%]		82.8
Dist 3dB Peak [mm]		10.3

Measurement Results

	Area Scan	Zoom Scan
psSAR1g [W/Kg]	1.39	1.37
psSAR10g [W/Kg]	0.725	0.711
Power Drift [dB]	N/A	-0.02



System Performance Check Report for D2600V2 - SN1036

Exposure Conditions

Frequency [MHz] Channel Number	2600.000 0	TSL Permittivity	36.6
Group UID	CW 0--	TSL Conductivity [S/m]	1.98
Conversion Factor	7.16	Phantom Section TSL	Flat HSL

Hardware Setup

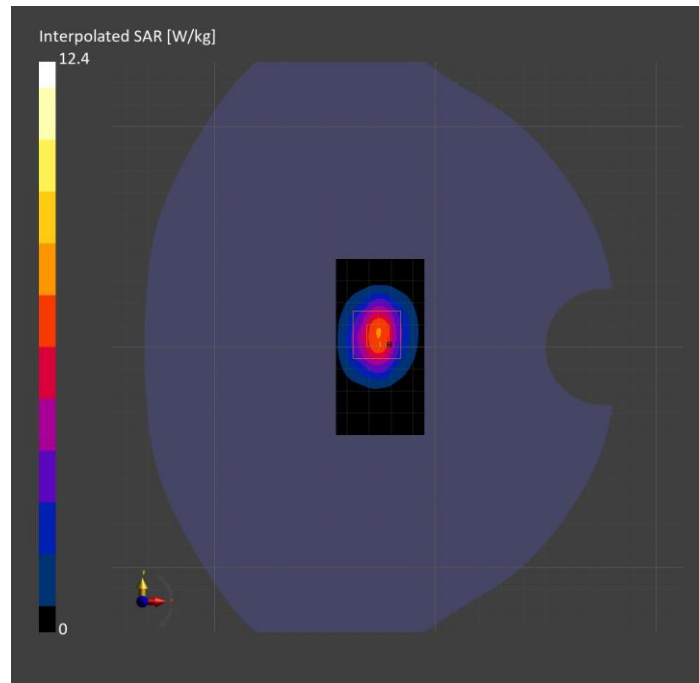
Probe Calibration Date	EX3DV4 - SN7448 2024-02-07	Phantom	Twin-SAM V8.0 (30deg probe tilt)
DAE Calibration Date	DAE4 Sn1784 2024-05-02	TSL Type	HBBL-600-10000
Software Version	16.2.4.2524		

Scans Setup

	Area Scan	Zoom Scan
Grid Extents [mm]	40.0 x 80.0	30.0 x 30.0 x 30.0
Grid Steps [mm]	10.0 x 10.0	5.0 x 5.0 x 1.5
Sensor Surface [mm]	3.0	1.4
Graded Grid	N/A	Yes
M2/M1 [%]		78.6
Dist 3dB Peak [mm]		9.0

Measurement Results

	Area Scan	Zoom Scan
psSAR1g [W/Kg]	5.67	5.80
psSAR10g [W/Kg]	2.56	2.61
Power Drift [dB]	N/A	0.02



System Performance Check Report for D750V3 - SN1071

Exposure Conditions

Frequency [MHz] Channel Number	750.000 0	TSL Permittivity	39.9
Group UID	CW 0--	TSL Conductivity [S/m]	0.904
Conversion Factor	8.87	Phantom Section TSL	Flat HSL

Hardware Setup

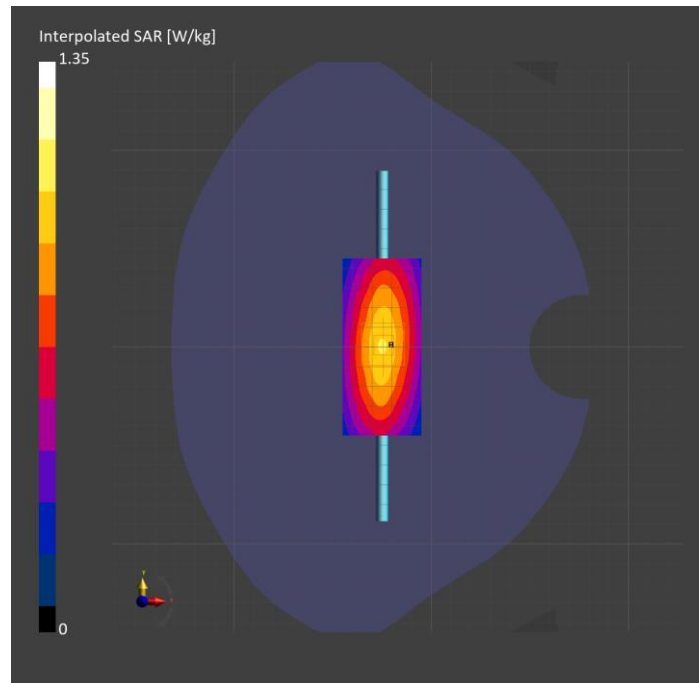
Probe Calibration Date	EX3DV4 - SN7448 2024-02-07	Phantom	Twin-SAM V8.0 (30deg probe tilt)
DAE Calibration Date	DAE4 Sn1784 2024-05-02	TSL Type	HBBL-600-10000
Software Version	16.2.4.2524		

Scans Setup

	Area Scan	Zoom Scan
Grid Extents [mm]	40.0 x 90.0	30.0 x 30.0 x 30.0
Grid Steps [mm]	10.0 x 15.0	6.0 x 6.0 x 1.5
Sensor Surface [mm]	3.0	1.4
Graded Grid	N/A	Yes
M2/M1 [%]		87.4
Dist 3dB Peak [mm]		19.7

Measurement Results

	Area Scan	Zoom Scan
psSAR1g [W/Kg]	0.890	0.897
psSAR10g [W/Kg]	0.592	0.594
Power Drift [dB]	N/A	-0.06



System Performance Check Report for D835V2 - SN4d117

Exposure Conditions

Frequency [MHz] Channel Number	835.000 0	TSL Permittivity	39.7
Group UID	CW 0--	TSL Conductivity [S/m]	0.940
Conversion Factor	9.03	Phantom Section TSL	Flat HSL

Hardware Setup

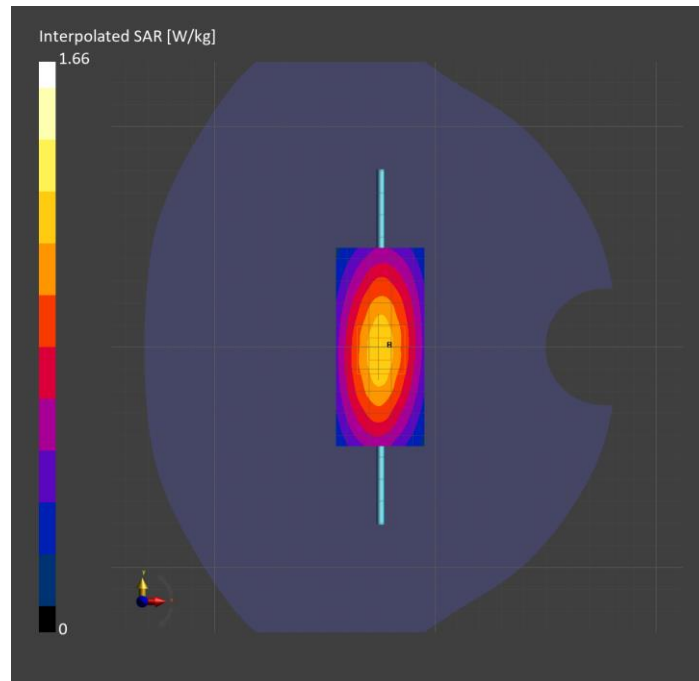
Probe Calibration Date	EX3DV4 - SN7448 2024-02-07	Phantom	Twin-SAM V8.0 (30deg probe tilt)
DAE Calibration Date	DAE4 Sn1784 2024-05-02	TSL Type	HBBL-600-10000
Software Version	16.2.4.2524		

Scans Setup

	Area Scan	Zoom Scan
Grid Extents [mm]	40.0 x 90.0	30.0 x 30.0 x 30.0
Grid Steps [mm]	10.0 x 15.0	6.0 x 6.0 x 1.5
Sensor Surface [mm]	3.0	1.4
Graded Grid	N/A	Yes
M2/M1 [%]		86.0
Dist 3dB Peak [mm]		20.4

Measurement Results

	Area Scan	Zoom Scan
psSAR1g [W/Kg]	1.06	1.06
psSAR10g [W/Kg]	0.696	0.689
Power Drift [dB]	N/A	0.01



System Performance Check Report for D1900V2 - SN5d163

Exposure Conditions

Frequency [MHz] Channel Number	1900.000 0	TSL Permittivity	41.3
Group UID	CW 0--	TSL Conductivity [S/m]	1.39
Conversion Factor	8.08	Phantom Section TSL	Flat HSL

Hardware Setup

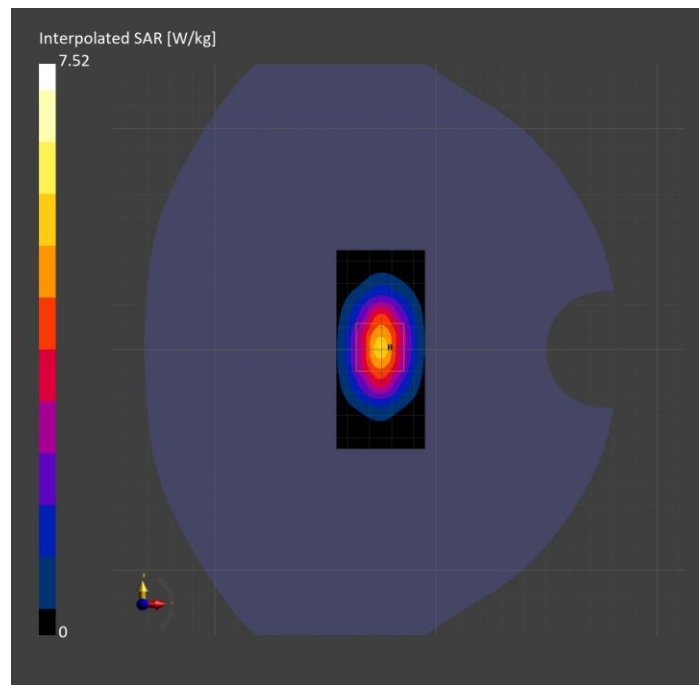
Probe Calibration Date	EX3DV4 - SN7709 2023-11-30	Phantom	Twin-SAM V8.0 (30deg probe tilt)
DAE Calibration Date	DAE4 Sn1714 2023-11-22	TSL Type	HBBL-600-10000
Software Version	16.2.4.2524		

Scans Setup

	Area Scan	Zoom Scan
Grid Extents [mm]	40.0 x 90.0	30.0 x 30.0 x 30.0
Grid Steps [mm]	10.0 x 15.0	6.0 x 6.0 x 1.5
Sensor Surface [mm]	3.0	1.4
Graded Grid	N/A	Yes
M2/M1 [%]		84.5
Dist 3dB Peak [mm]		9.6

Measurement Results

	Area Scan	Zoom Scan
psSAR1g [W/Kg]	4.25	4.22
psSAR10g [W/Kg]	2.18	2.23
Power Drift [dB]	N/A	-0.06



System Performance Check Report for D1750V2 - SN1053

Exposure Conditions

Frequency [MHz] Channel Number	1750.000 0	TSL Permittivity	39.9
Group UID	CW 0--	TSL Conductivity [S/m]	1.35
Conversion Factor	8.53	Phantom Section TSL	Flat HSL

Hardware Setup

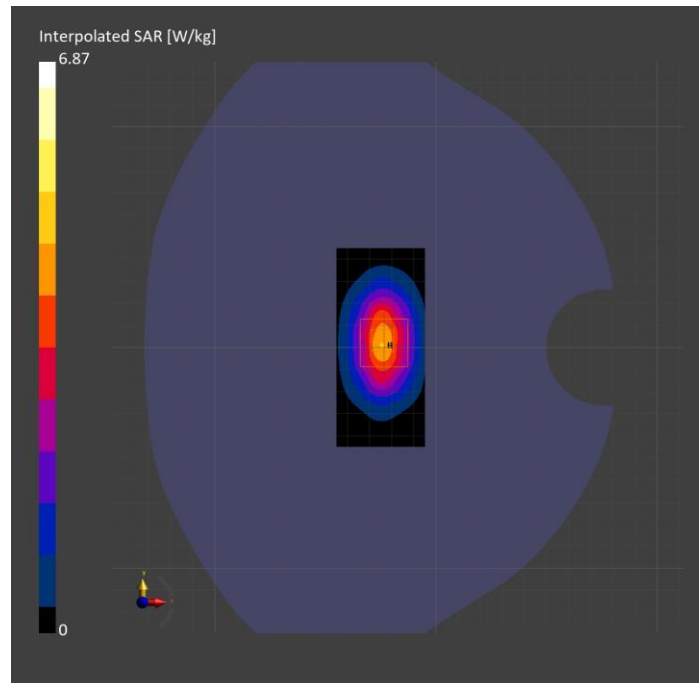
Probe Calibration Date	EX3DV4 - SN7709 2023-11-30	Phantom	Twin-SAM V8.0 (30deg probe tilt)
DAE Calibration Date	DAE4 Sn1714 2023-11-22	TSL Type	HBBL-600-10000
Software Version	16.2.4.2524		

Scans Setup

	Area Scan	Zoom Scan
Grid Extents [mm]	40.0 x 90.0	30.0 x 30.0 x 30.0
Grid Steps [mm]	10.0 x 15.0	6.0 x 6.0 x 1.5
Sensor Surface [mm]	3.0	1.4
Graded Grid	N/A	Yes
M2/M1 [%]		84.0
Dist 3dB Peak [mm]		10.8

Measurement Results

	Area Scan	Zoom Scan
psSAR1g [W/Kg]	3.69	3.83
psSAR10g [W/Kg]	1.97	2.05
Power Drift [dB]	N/A	-0.14



System Performance Check Report for D2600V2 - SN1036

Exposure Conditions

Frequency [MHz] Channel Number	2600.000 0	TSL Permittivity	38.8
Group UID	CW 0--	TSL Conductivity [S/m]	1.95
Conversion Factor	7.56	Phantom Section TSL	Flat HSL

Hardware Setup

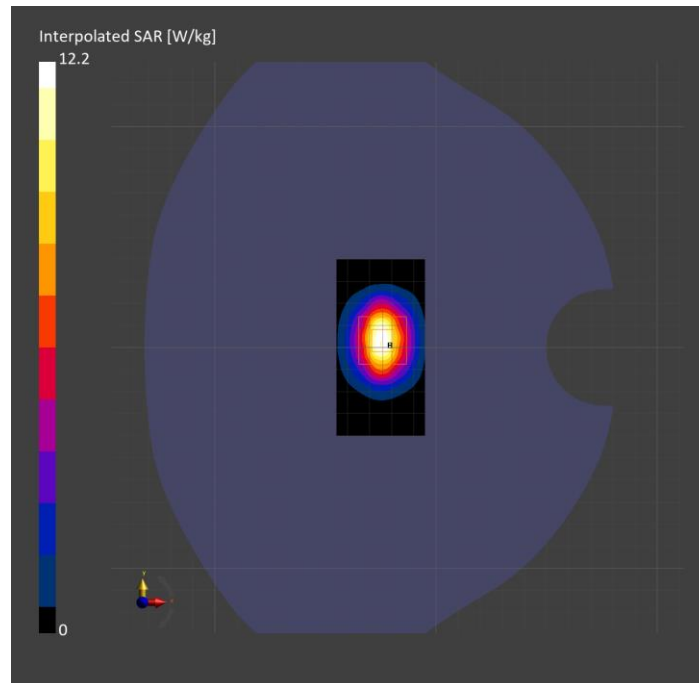
Probe Calibration Date	EX3DV4 - SN7709 2023-11-30	Phantom	Twin-SAM V8.0 (30deg probe tilt)
DAE Calibration Date	DAE4 Sn1714 2023-11-22	TSL Type	HBBL-600-10000
Software Version	16.2.4.2524		

Scans Setup

	Area Scan	Zoom Scan
Grid Extents [mm]	40.0 x 80.0	30.0 x 30.0 x 30.0
Grid Steps [mm]	10.0 x 10.0	5.0 x 5.0 x 1.5
Sensor Surface [mm]	3.0	1.4
Graded Grid	N/A	Yes
M2/M1 [%]		80.7
Dist 3dB Peak [mm]		9.0

Measurement Results

	Area Scan	Zoom Scan
psSAR1g [W/Kg]	5.68	5.86
psSAR10g [W/Kg]	2.53	2.67
Power Drift [dB]	N/A	-0.14



System Performance Check Report for D2450V2 - SN748

Exposure Conditions

Frequency [MHz] Channel Number	2450.000 0	TSL Permittivity	41.6
Group UID	CW 0--	TSL Conductivity [S/m]	1.75
Conversion Factor	7.66	Phantom Section TSL	Flat HSL

Hardware Setup

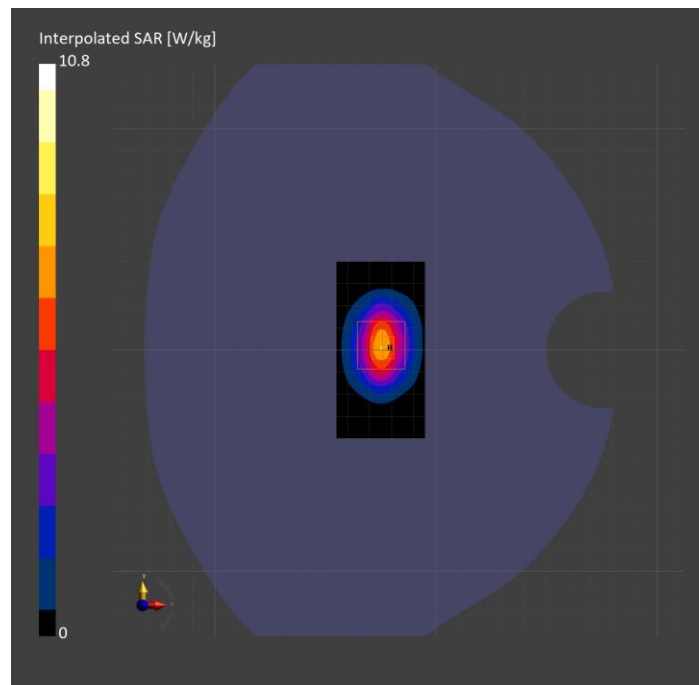
Probe Calibration Date	EX3DV4 - SN7709 2023-11-30	Phantom	Twin-SAM V8.0 (30deg probe tilt)
DAE Calibration Date	DAE4 Sn1714 2023-11-22	TSL Type	HBBL-600-10000
Software Version	16.2.4.2524		

Scans Setup

	Area Scan	Zoom Scan
Grid Extents [mm]	40.0 x 80.0	30.0 x 30.0 x 30.0
Grid Steps [mm]	10.0 x 10.0	5.0 x 5.0 x 1.5
Sensor Surface [mm]	3.0	1.4
Graded Grid	N/A	Yes
M2/M1 [%]		81.9
Dist 3dB Peak [mm]		9.0

Measurement Results

	Area Scan	Zoom Scan
psSAR1g [W/Kg]	5.50	5.47
psSAR10g [W/Kg]	2.53	2.60
Power Drift [dB]	N/A	0.06



System Performance Check Report for D1750V2 - SN1053

Exposure Conditions

Frequency [MHz] Channel Number	1750.000 0	TSL Permittivity	39.6
Group UID	CW 0--	TSL Conductivity [S/m]	1.32
Conversion Factor	7.83	Phantom Section TSL	Flat HSL

Hardware Setup

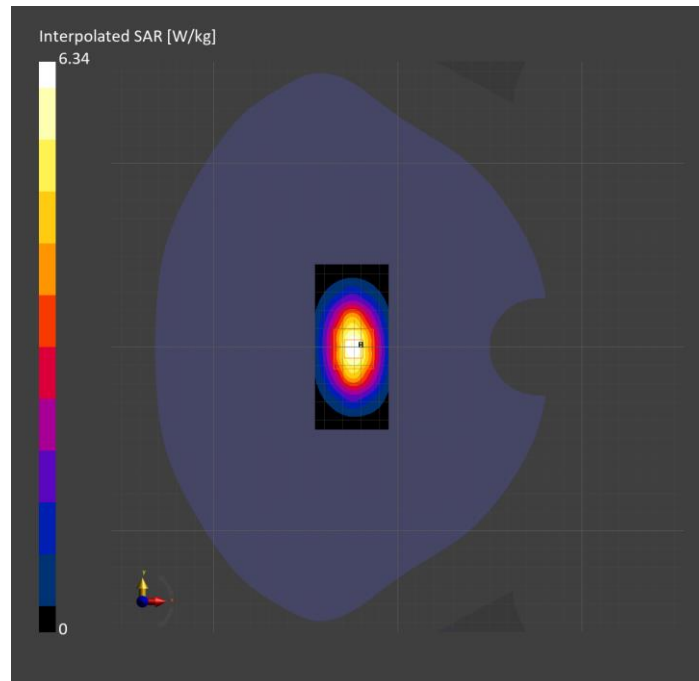
Probe Calibration Date	EX3DV4 - SN3749 2024-01-11	Phantom	Twin-SAM V8.0 (30deg probe tilt)
DAE Calibration Date	DAE4 Sn1674 2024-05-13	TSL Type	HBBL-600-10000
Software Version	16.2.4.2524		

Scans Setup

	Area Scan	Zoom Scan
Grid Extents [mm]	40.0 x 90.0	30.0 x 30.0 x 30.0
Grid Steps [mm]	10.0 x 15.0	6.0 x 6.0 x 1.5
Sensor Surface [mm]	3.0	1.4
Graded Grid	N/A	Yes
M2/M1 [%]		81.6
Dist 3dB Peak [mm]		10.3

Measurement Results

	Area Scan	Zoom Scan
psSAR1g [W/Kg]	3.39	3.40
psSAR10g [W/Kg]	1.81	1.81
Power Drift [dB]	-0.00	0.01



System Performance Check Report for D1900V2 - SN5d140

Exposure Conditions

Frequency [MHz] Channel Number	1900.000 0	TSL Permittivity	39.4
Group UID	CW 0--	TSL Conductivity [S/m]	1.40
Conversion Factor	7.67	Phantom Section TSL	Flat HSL

Hardware Setup

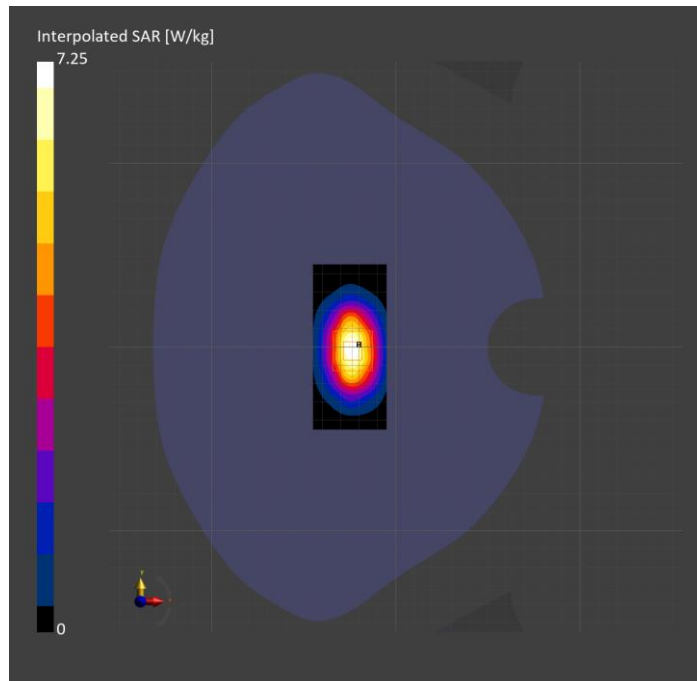
Probe Calibration Date	EX3DV4 - SN3749 2024-01-11	Phantom	Twin-SAM V8.0 (30deg probe tilt)
DAE Calibration Date	DAE4 Sn1674 2024-05-13	TSL Type	HBBL-600-10000
Software Version	16.2.4.2524		

Scans Setup

	Area Scan	Zoom Scan
Grid Extents [mm]	40.0 x 90.0	30.0 x 30.0 x 30.0
Grid Steps [mm]	10.0 x 15.0	6.0 x 6.0 x 1.5
Sensor Surface [mm]	3.0	1.4
Graded Grid	N/A	Yes
M2/M1 [%]		80.1
Dist 3dB Peak [mm]		10.8

Measurement Results

	Area Scan	Zoom Scan
psSAR1g [W/Kg]	3.74	3.74
psSAR10g [W/Kg]	1.95	1.95
Power Drift [dB]	-0.08	0.01



System Performance Check Report for D6.5GHzV2 - SN1033

Exposure Conditions

Frequency [MHz] Channel Number	6500.000 0	TSL Permittivity	33.7
Group UID	CW 0--	TSL Conductivity [S/m]	5.72
Conversion Factor	5.24	Phantom Section TSL	Flat HSL

Hardware Setup

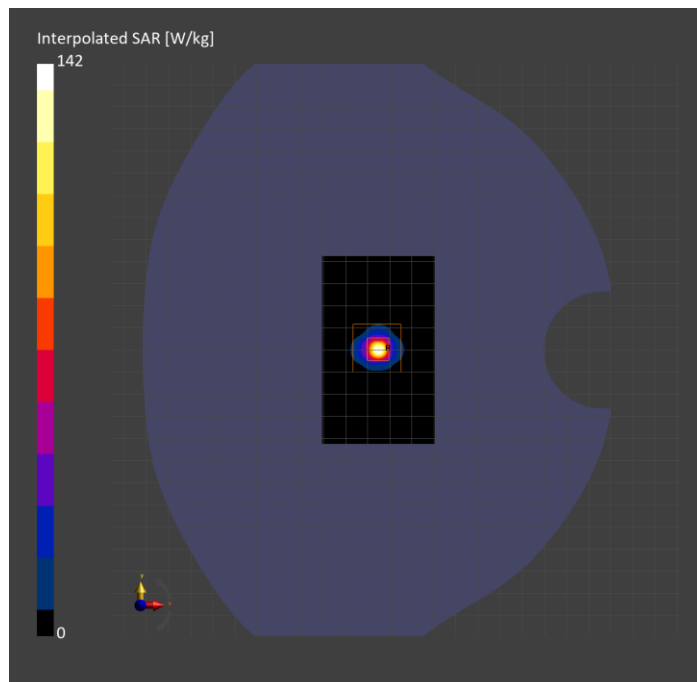
Probe Calibration Date	EX3DV4 - SN7498 2024-03-12	Phantom	Twin-SAM V8.0 (30deg probe tilt)
DAE Calibration Date	DAE4 Sn1796 2024-05-02	TSL Type	HBBL-600-10000
Software Version	16.2.4.2524		

Scans Setup

	Area Scan	Zoom Scan
Grid Extents [mm]	51.0 x 85.0	22.0 x 22.0 x 22.0
Grid Steps [mm]	8.5 x 8.5	3.4 x 3.4 x 1.4
Sensor Surface [mm]	3.0	1.4
Graded Grid	N/A	Yes
M2/M1 [%]		54.7
Dist 3dB Peak [mm]		4.9

Measurement Results

	Area Scan	Zoom Scan	APD
psSAR1g [W/Kg]	21.8	24.6	N/A
psSAR8g [W/Kg]	5.06	5.62	N/A
psSAR10g [W/Kg]	4.19	4.63	N/A
psAPD (4.0cm ² , sq.) [W/m ²]	N/A	N/A	112
Power Drift [dB]	0.06	0.01	N/A



System Performance Check Report for D6.5GHzV2 - SN1032

Exposure Conditions

Frequency [MHz] Channel Number	6500.000 0	TSL Permittivity	32.5
Group UID	CW 0--	TSL Conductivity [S/m]	5.82
Conversion Factor	5.24	Phantom Section TSL	Flat HSL

Hardware Setup

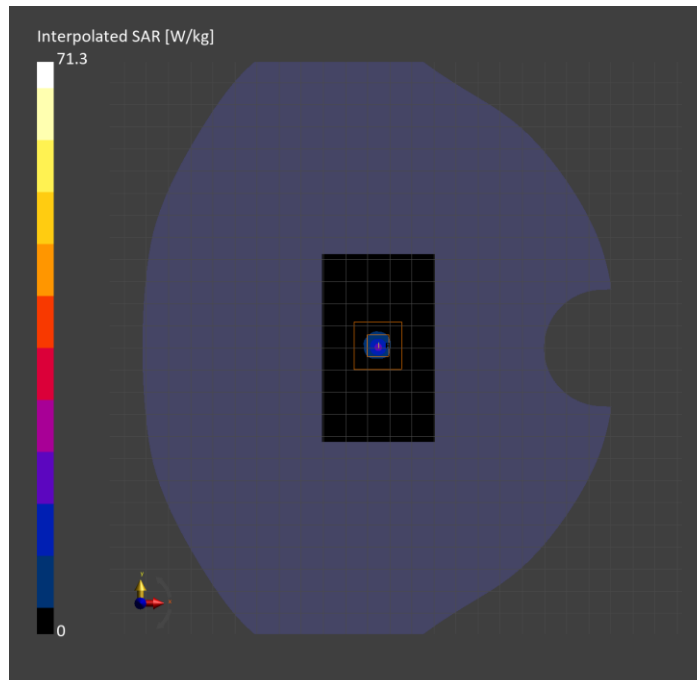
Probe Calibration Date	EX3DV4 - SN7498 2024-03-12	Phantom	Twin-SAM V8.0 (30deg probe tilt)
DAE Calibration Date	DAE4 Sn1796 2024-05-02	TSL Type	HBBL-600-10000
Software Version	16.2.4.2524		

Scans Setup

	Area Scan	Zoom Scan
Grid Extents [mm]	51.0 x 85.0	22.0 x 22.0 x 22.0
Grid Steps [mm]	8.5 x 8.5	3.4 x 3.4 x 1.4
Sensor Surface [mm]	3.0	1.4
Graded Grid	N/A	Yes
M2/M1 [%]		52.1
Dist 3dB Peak [mm]		4.6

Measurement Results

	Area Scan	Zoom Scan	APD
psSAR1g [W/Kg]	10.7	11.4	N/A
psSAR8g [W/Kg]	2.43	2.57	N/A
psSAR10g [W/Kg]	2.02	2.10	N/A
psAPD (4.0cm ² , sq.) [W/m ²]	N/A	N/A	51.3
Power Drift [dB]	0.02	0.03	N/A



System Performance Check Report for D6.5GHzV2 - SN1033

Exposure Conditions

Frequency [MHz] Channel Number	6500.000 0	TSL Permittivity	32.7
Group UID	CW 0--	TSL Conductivity [S/m]	5.82
Conversion Factor	4.63	Phantom Section TSL	Flat HSL

Hardware Setup

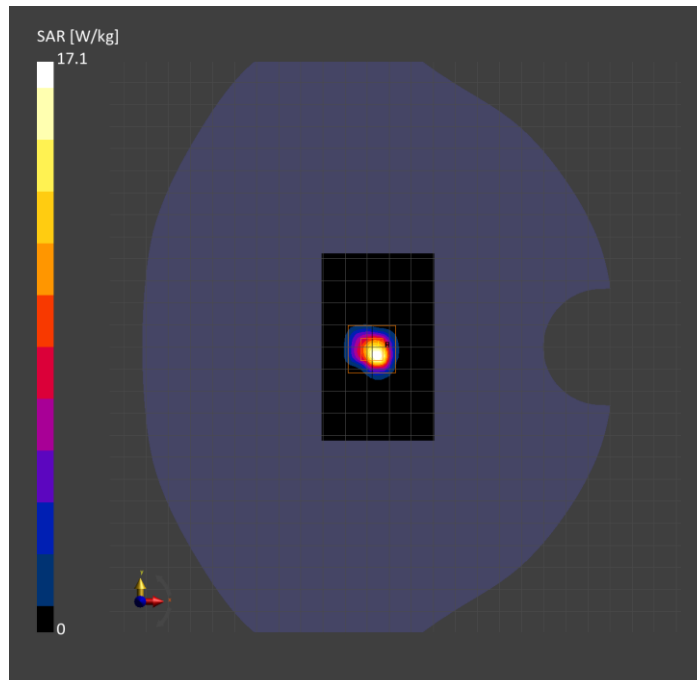
Probe Calibration Date	EX3DV4 - SN7587 2024-04-15	Phantom	Twin-SAM V8.0 (30deg probe tilt)
DAE Calibration Date	DAE4 Sn1797 2024-05-02	TSL Type	HBBL-600-10000
Software Version	16.2.4.2524		

Scans Setup

	Area Scan	Zoom Scan
Grid Extents [mm]	51.0 x 85.0	22.0 x 22.0 x 22.0
Grid Steps [mm]	8.5 x 8.5	3.4 x 3.4 x 1.4
Sensor Surface [mm]	3.0	1.4
Graded Grid	N/A	Yes
M2/M1 [%]		51.2
Dist 3dB Peak [mm]		4.6

Measurement Results

	Area Scan	Zoom Scan	APD
psSAR1g [W/Kg]	16.3	20.7	N/A
psSAR8g [W/Kg]	4.13	4.67	N/A
psSAR10g [W/Kg]	3.42	3.83	N/A
psAPD (4.0cm ² , sq.) [W/m ²]	N/A	N/A	93.4
Power Drift [dB]	N/A	0.09	N/A



System Performance Check Report for D6.5GHzV2 - SN1032

Exposure Conditions

Frequency [MHz] Channel Number	6500.000 0	TSL Permittivity	33.1
Group UID	CW 0--	TSL Conductivity [S/m]	6.05
Conversion Factor	4.63	Phantom Section TSL	Flat HSL

Hardware Setup

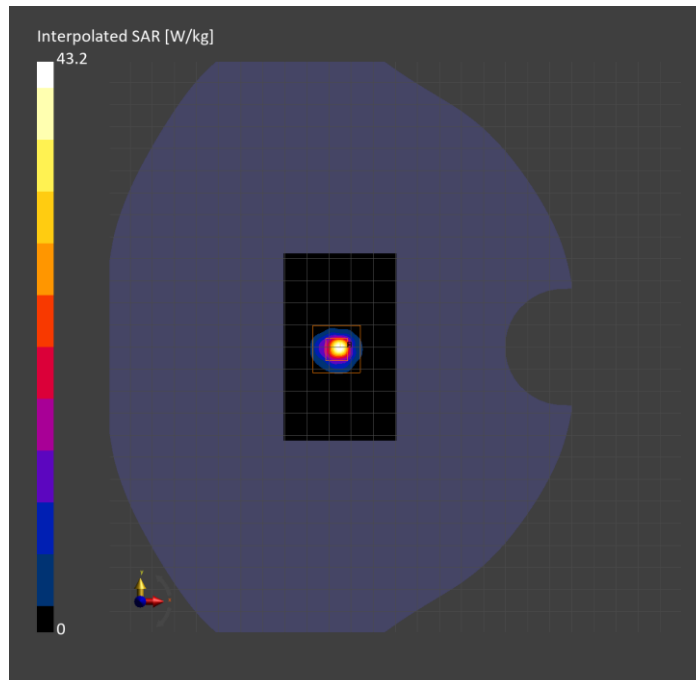
Probe Calibration Date	EX3DV4 - SN7587 2024-04-15	Phantom	Twin-SAM V8.0 (30deg probe tilt)
DAE Calibration Date	DAE4 Sn1797 2024-05-02	TSL Type	HBBL-600-10000
Software Version	16.2.4.2524		

Scans Setup

	Area Scan	Zoom Scan
Grid Extents [mm]	51.0 x 85.0	22.0 x 22.0 x 22.0
Grid Steps [mm]	8.5 x 8.5	3.4 x 3.4 x 1.4
Sensor Surface [mm]	3.0	1.4
Graded Grid	N/A	Yes
M2/M1 [%]		50.4
Dist 3dB Peak [mm]		4.4

Measurement Results

	Area Scan	Zoom Scan	APD
psSAR1g [W/Kg]	22.2	27.5	N/A
psSAR8g [W/Kg]	5.29	6.20	N/A
psSAR10g [W/Kg]	4.38	5.09	N/A
psAPD (4.0cm ² , sq.) [W/m ²]	N/A	N/A	124
Power Drift [dB]	N/A	-0.04	N/A



System Performance Check Report for D6.5GHzV2 - SN1033

Exposure Conditions

Frequency [MHz] Channel Number	6500.000 0	TSL Permittivity	32.5
Group UID	CW 0--	TSL Conductivity [S/m]	5.91
Conversion Factor	5.35	Phantom Section TSL	Flat HSL

Hardware Setup

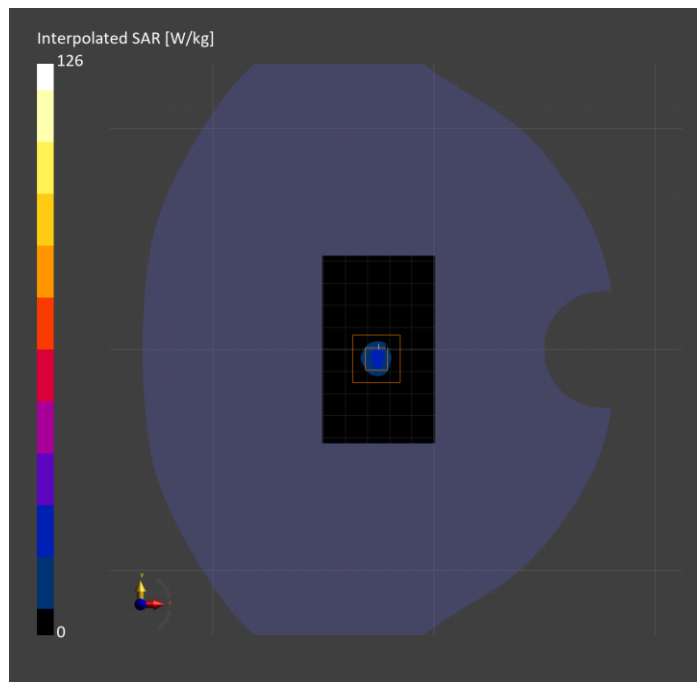
Probe Calibration Date	EX3DV4 - SN7501 2024-03-14	Phantom	Twin-SAM V8.0 (30deg probe tilt)
DAE Calibration Date	DAE4 Sn1357 2024-01-09	TSL Type	HBBL-600-10000
Software Version	16.2.4.2524		

Scans Setup

	Area Scan	Zoom Scan
Grid Extents [mm]	51.0 x 85.0	22.0 x 22.0 x 22.0
Grid Steps [mm]	8.5 x 8.5	3.4 x 3.4 x 1.4
Sensor Surface [mm]	3.0	1.4
Graded Grid	N/A	Yes
M2/M1 [%]		51.8
Dist 3dB Peak [mm]		5.0

Measurement Results

	Area Scan	Zoom Scan	APD
psSAR1g [W/Kg]	17.2	21.5	N/A
psSAR8g [W/Kg]	4.70	5.22	N/A
psSAR10g [W/Kg]	3.92	4.31	N/A
psAPD (4.0cm ² , sq.) [W/m ²]	N/A	N/A	104
Power Drift [dB]	N/A	-0.03	N/A



System Performance Check Report for D6.5GHzV2 - SN1033

Exposure Conditions

Frequency [MHz] Channel Number	6500.000 0	TSL Permittivity	33.2
Group UID	CW 0--	TSL Conductivity [S/m]	5.83
Conversion Factor	5.1	Phantom Section TSL	Flat HSL

Hardware Setup

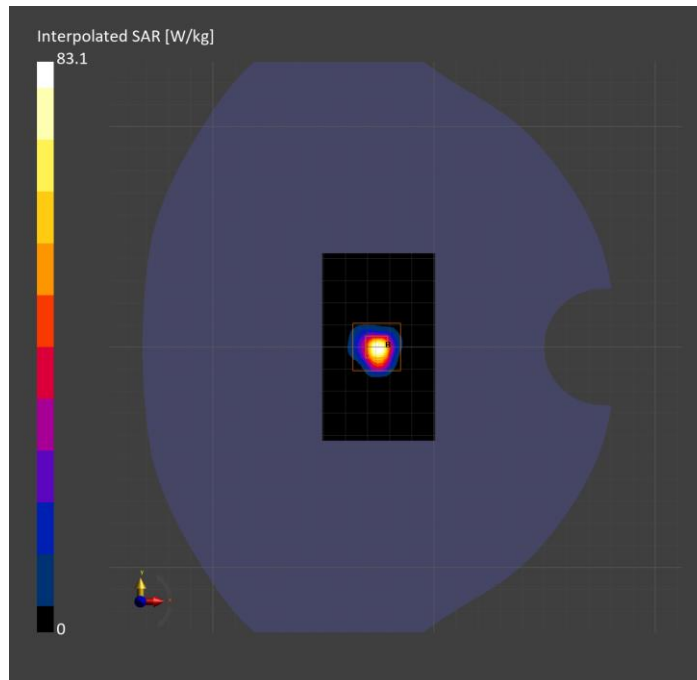
Probe Calibration Date	EX3DV4 - SN7810 2024-05-08	Phantom	Twin-SAM V8.0 (30deg probe tilt)
DAE Calibration Date	DAE4 Sn1787 2024-05-02	TSL Type	HBBL-600-10000
Software Version	16.2.4.2524		

Scans Setup

	Area Scan	Zoom Scan
Grid Extents [mm]	51.0 x 85.0	22.0 x 22.0 x 22.0
Grid Steps [mm]	8.5 x 8.5	3.4 x 3.4 x 1.4
Sensor Surface [mm]	3.0	1.4
Graded Grid	N/A	Yes
M2/M1 [%]		50.7
Dist 3dB Peak [mm]		4.6

Measurement Results

	Area Scan	Zoom Scan	APD
psSAR1g [W/Kg]	11.5	13.0	N/A
psSAR8g [W/Kg]	2.66	2.94	N/A
psSAR10g [W/Kg]	2.21	2.41	N/A
psAPD (4.0cm ² , sq.) [W/m ²]	N/A	N/A	58.7
Power Drift [dB]	N/A	0.00	N/A



Validation band: CW, FRONT

Exposure Conditions

Band	Validation band	Phantom Section	5G
Frequency [MHz] Channel Number	10000.0 0	Conversion Factor	1.0
Group UID	CW, 0--	Position Test Distance [mm]	FRONT 10.00

Hardware Setup

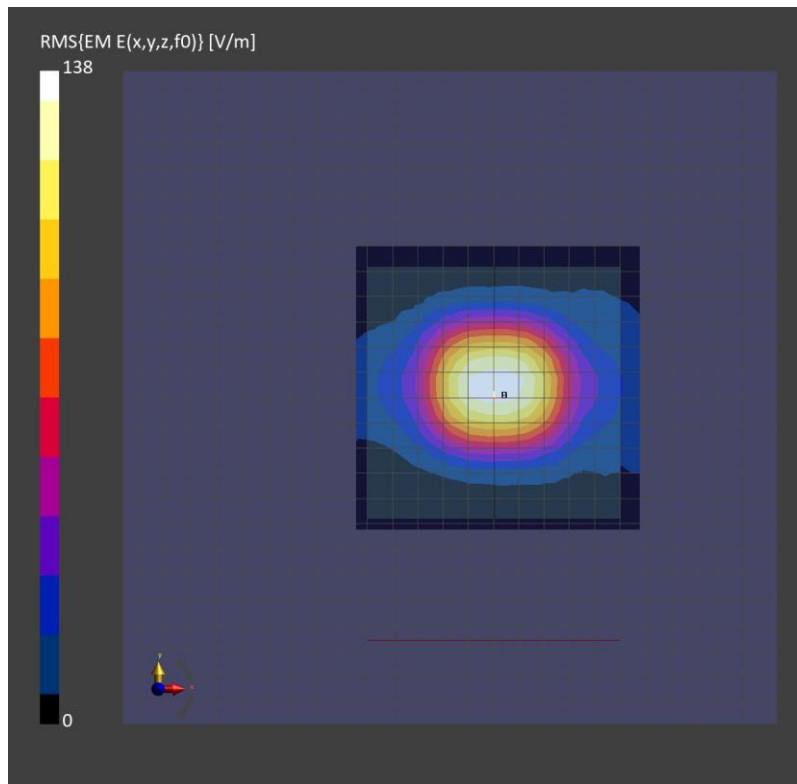
Probe Calibration Date	EUmmWV4 - SN9589_F1-55GHz 2023-09-05	Phantom	mmWave xxxx
DAE Calibration Date	DAE4ip Sn1621 2024-04-12	Medium	Air -
Software Version	3.2.0.1840		

Scan Setup

Scan Type	5G Scan	Grid Extents [mm]	25.0 x 25.0
Grid Steps [lambda]	0.25 x 0.25	Sensor Surface [mm]	10.0

Measurement Results

Avg. Area [cm ²]	4.00
psPDn+ [W/m ²]	41.0
psPDtot+ [W/m ²]	41.1
psPDmod+ [W/m ²]	41.4
E _{max} [V/m]	133
H _{max} [A/m]	0.357
Power Drift [dB]	0.01



Validation band: CW, FRONT

Exposure Conditions

Band	Validation band	Phantom Section	5G
Frequency [MHz] Channel Number	10000.0 10000	Conversion Factor	1.0
Group UID	CW, 0--	Position Test Distance [mm]	FRONT 10.00

Hardware Setup

Probe Calibration Date	EUmmWV4 - SN9619_F1-55GHz 2024-03-08	Phantom	mmWave xxxx
DAE Calibration Date	DAE4 Sn1472 2024-01-16	Medium	Air -
Software Version	3.2.0.1840		

Scan Setup

Scan Type	5G Scan	Grid Extents [mm]	120.0 x 120.0
Grid Steps [lambda]	0.25 x 0.25	Sensor Surface [mm]	10.0

Measurement Results

Avg. Area [cm ²]	4.00
psPDn+ [W/m ²]	40.2
psPDtot+ [W/m ²]	40.4
psPDmod+ [W/m ²]	40.5
E _{max} [V/m]	130
H _{max} [A/m]	0.353
Power Drift [dB]	-0.04

